

A tropical bungalow with a thatched roof made of palm fronds and a wooden deck. The bungalow is situated on a beach overlooking the ocean. The text "BUNGALOW'S AND COTTAGE'S" is overlaid in large white letters, and "2020 Models & Prices" is overlaid in smaller white letters below it.

# BUNGALOW'S AND COTTAGE'S

## 2020 Models & Prices



**Beach cabañas building price starting at 49.2 USD per sq ft  
Beachfront lots 40m wide, owner financing starting from  
1,450 USD per month, contact us for more information**

Select your favorite beach cabaña style  
and we can calculate your project





**Beachfront hotel projects design and permits service,  
starting from 1 bungalow unit**

A modern outdoor lounge area featuring several wooden pergolas with horizontal slats. The pergolas are arranged in a row, creating a series of open-air seating areas. In the foreground, there are several lounge chairs with white cushions and blue accents, some with ottomans. A wooden deck with steps leads up to the seating area. In the background, there is a clear blue sky and a view of the ocean. The text "We can build in Playa Mundo Maya" is overlaid in the center of the image.

**We can build in Playa Mundo  
Maya**



**Luxury-Chick bamboo interior design or sustainable eco-bungalow, we have it all**



**Restaurant, Spa and Beach Club design and building service, turn-key**



## Beach Cabañas and Decks



A photograph of a traditional thatched-roof hut, likely a beach project. The hut has a thick, layered roof of dried palm fronds. Inside, a bed with white linens is visible. A colorful hammock with a green, blue, and white patterned net and tassels is strung across the front of the hut. The floor is made of wooden planks. The scene is set outdoors with some greenery visible on the left.

**Ask government fund requirements to finance your beach-project in PLAYA MUNDO MAYA**

# Bungalow I

\$29,500 USD

42m<sup>2</sup> (452 sq ft)

## DISTRIBUTION:

Spacious bedroom with its full bathroom  
(LUXURY LINE)

Accessory area division with shelves

Terrace

Electrical and hydraulic installations



# Bungalow II

\$29,500 USD

42m<sup>2</sup> (452 sq ft)

## DISTRIBUTION:

Spacious bedroom with its full bathroom  
(LUXURY LINE)

Area for accessories Division with shelves

Terrace

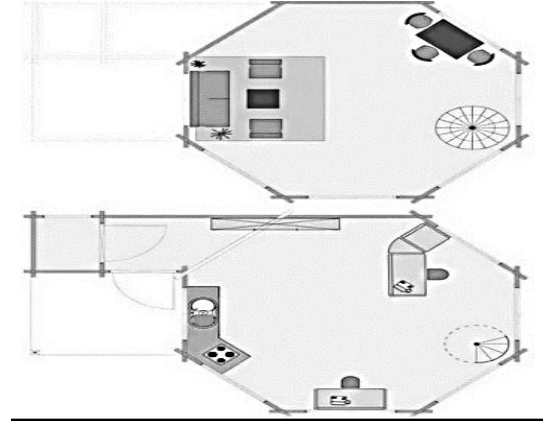
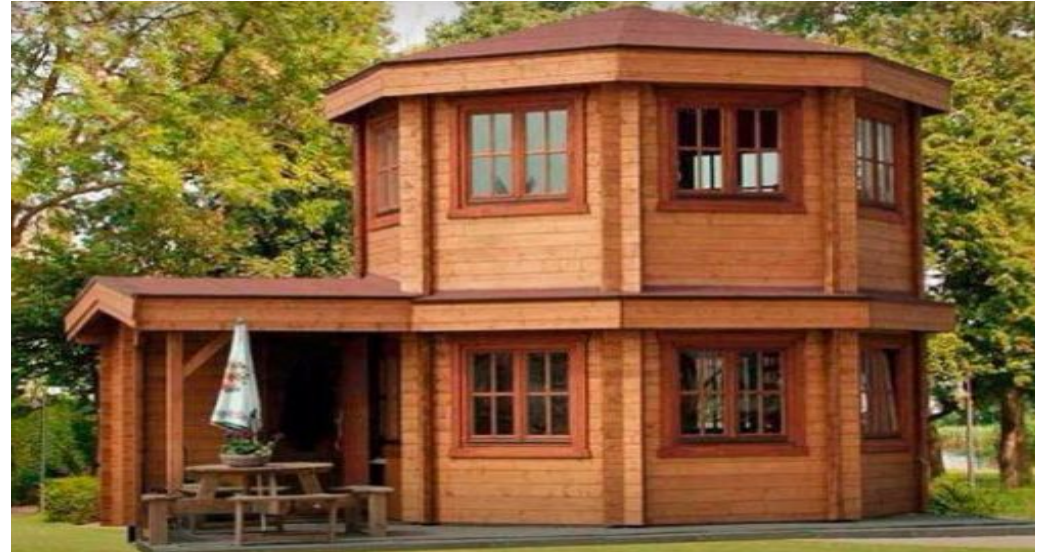
Electrical and hydraulic installations



# Cottage I

\$37,100 USD

48m<sup>2</sup> (517 sq ft)



# Cottage II

\$43,700 USD

68m<sup>2</sup> (732 sq ft)



## Cottage III

\$59,800 USD

96m<sup>2</sup> (1033 sq ft)



## Cottage IV

\$39,600 USD

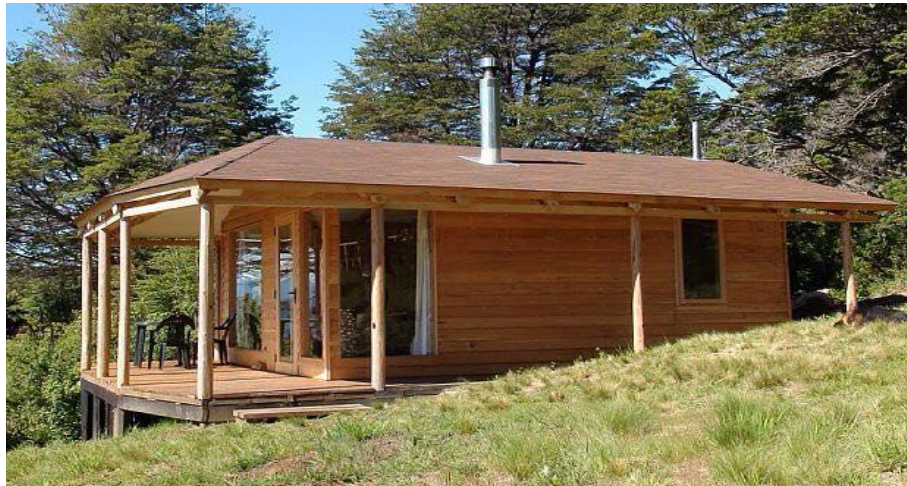
54m<sup>2</sup> (581 sq ft)

Plus Terrace



# Cottage V

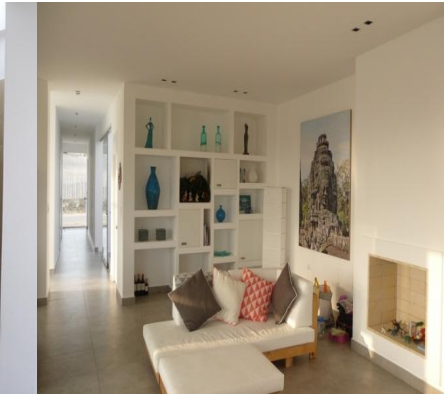
\$39,600 USD  
54m2 (581 sq ft)  
Plus Terrace





# House I

\$195,000 USD  
295m<sup>2</sup> (3175 sq ft)



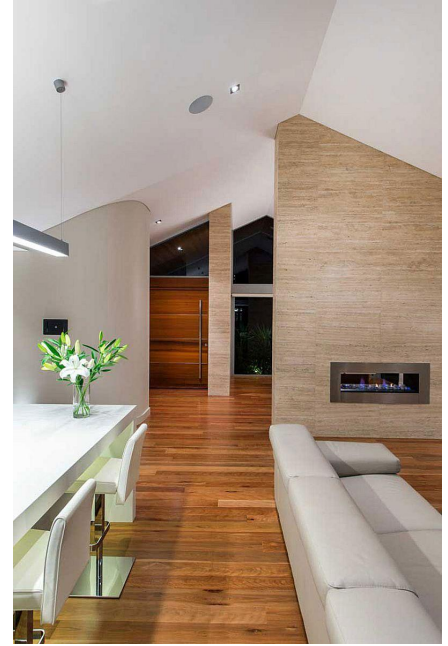
## House II

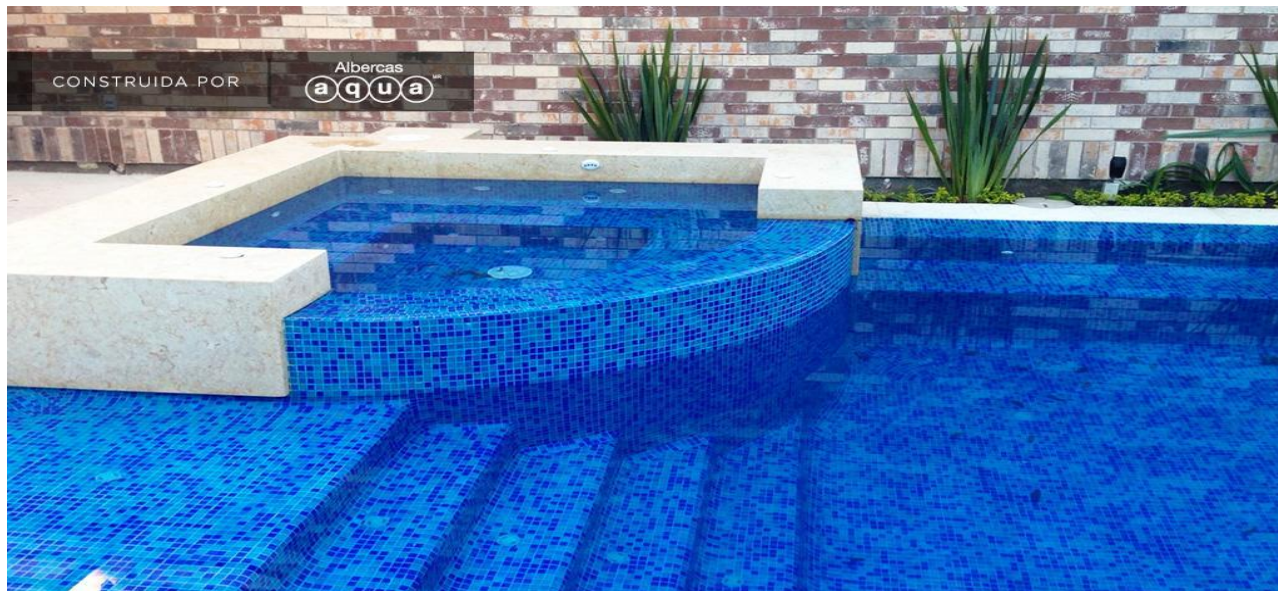
\$63,600 USD

120m<sup>2</sup> (1292 sq ft)



# House II





## Swimming pools

4m x 4m (13ft x 13ft)  
\$7,500 USD

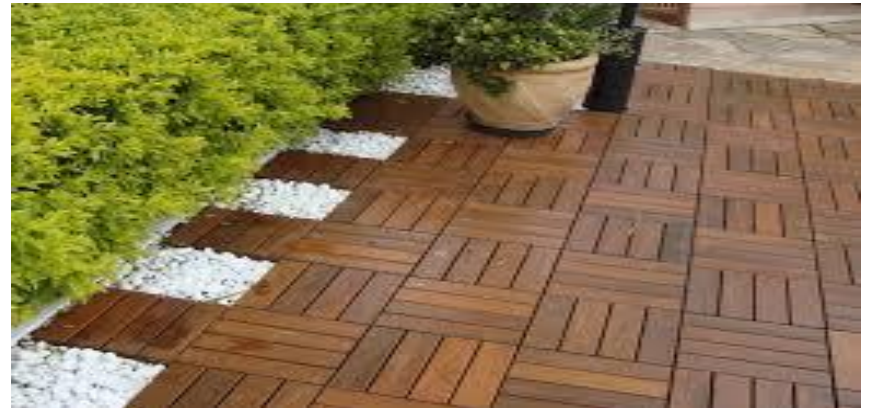
6m x 4m (19,5ft x 13ft)  
\$11,200 USD



7m x 5m (23ft x 16ft)  
\$16,300 USD

10m x 5m (33ft x 16ft)  
\$23,300 USD

# DECKS





# Bath Rooms



Please contact us:

[www.playamundomaya.com](http://www.playamundomaya.com)

The Global Property Service Group

[info@globalpsg.com](mailto:info@globalpsg.com)

+521 999 298 9073

[www.globalpsg.com](http://www.globalpsg.com)