



List of Defects - all to be read with previous report for more information

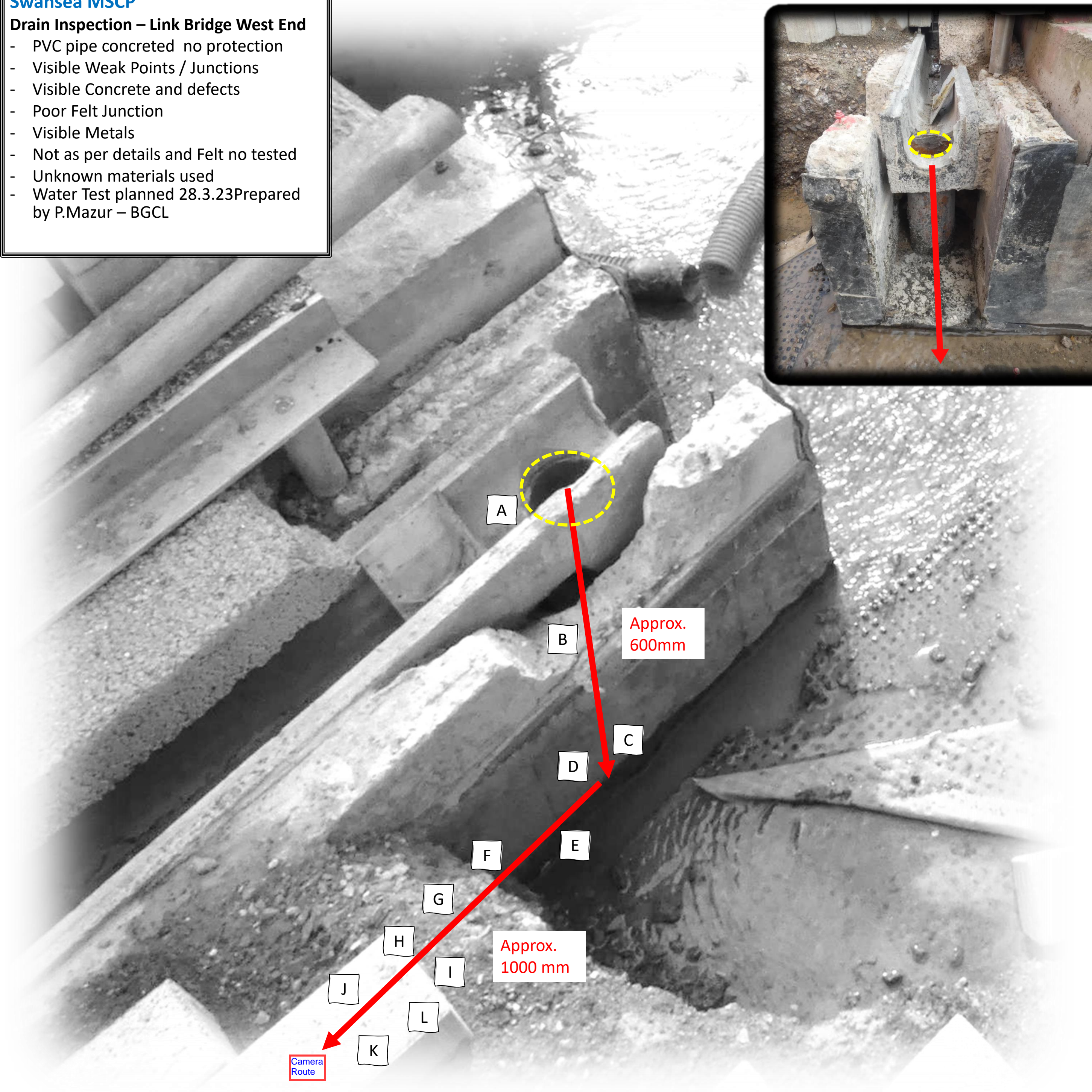
1. Membrane over cavity not installed as per details
2. Concrete Junctions missing felt membrane /seals.
3. Missing Upstands Weatherproof
4. Electric cable holes not sealed
5. Missing Closures / Upstand TBC
6. Membrane to be repaired , damage by fixings and missing testing record
7. Broken Concrete Upstand and Missing Horizontal Membrane
8. Drainage System – Ref to Endoscope Camera Report . Water test Required and Chanel to be exposed, drainage repair required.

**Repair addressed to: Seability and BGCL.
Time and costs to be discuss with team.**

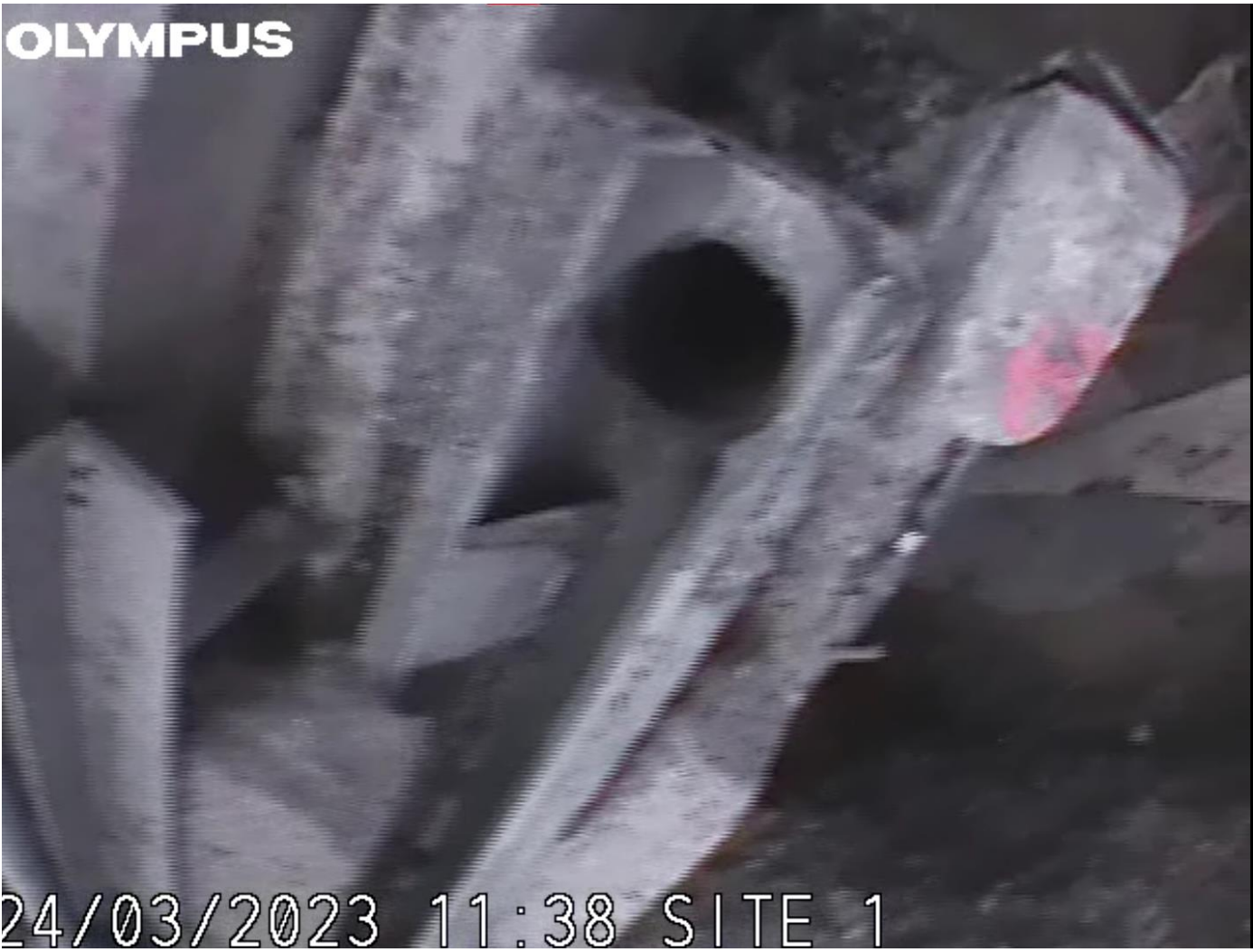
Swansea MSCP

Drain Inspection – Link Bridge West End

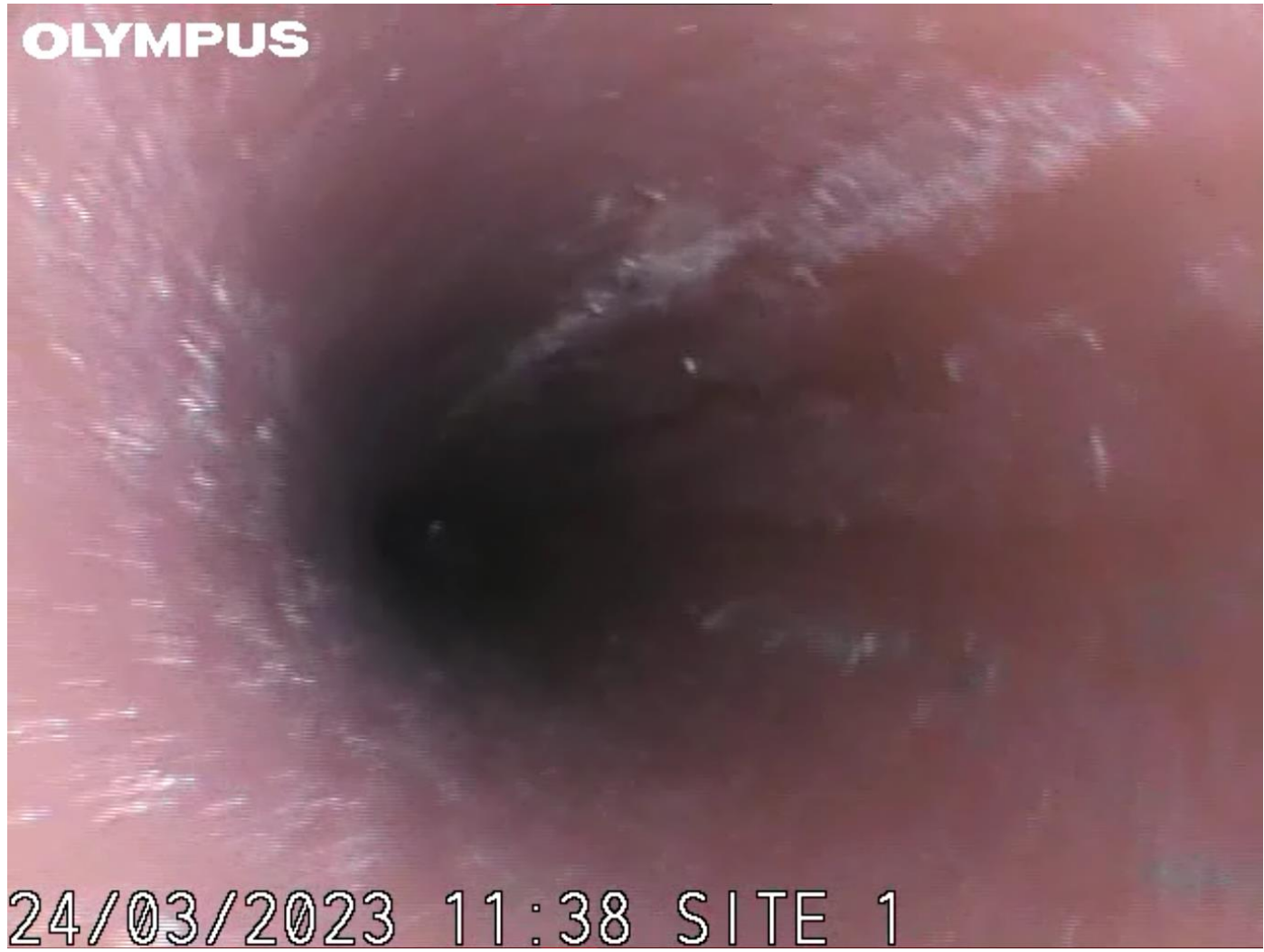
- PVC pipe concreted no protection
 - Visible Weak Points / Junctions
 - Visible Concrete and defects
 - Poor Felt Junction
 - Visible Metals
 - Not as per details and Felt no tested
 - Unknown materials used
 - Water Test planned 28.3.23
- Prepared by P.Mazur – BGCL



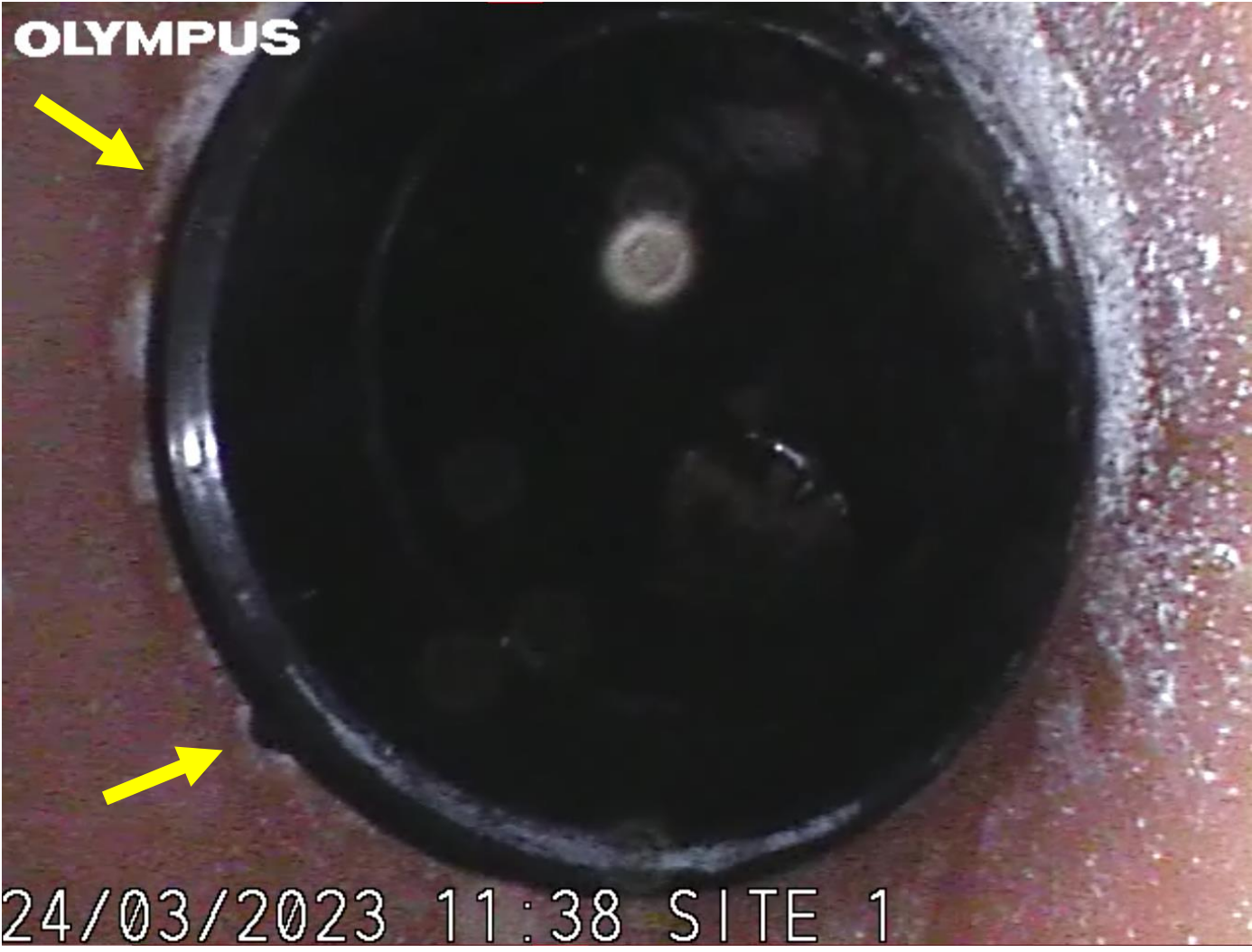
A Top View



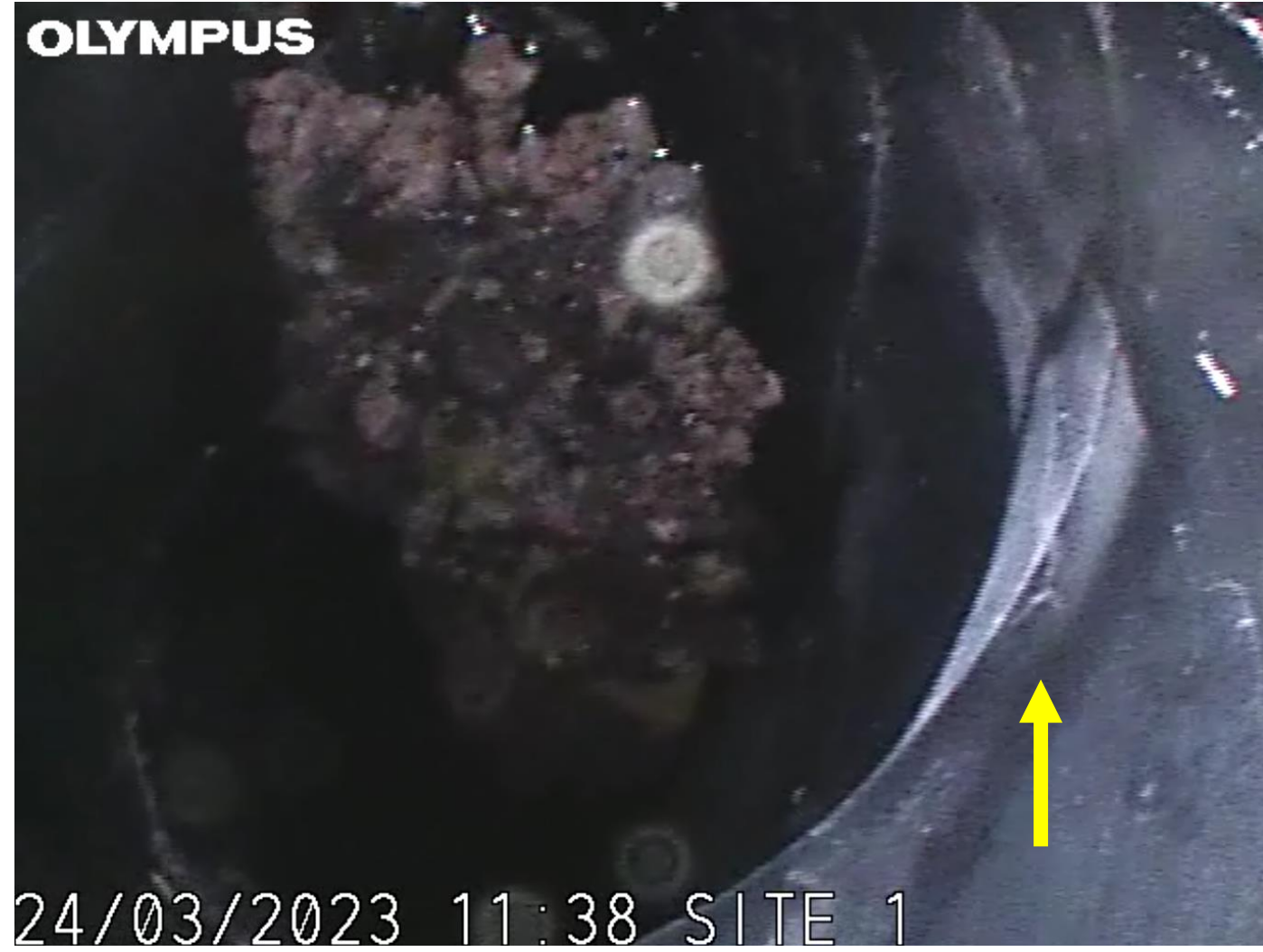
B 110 mm PVC Drain Pipe



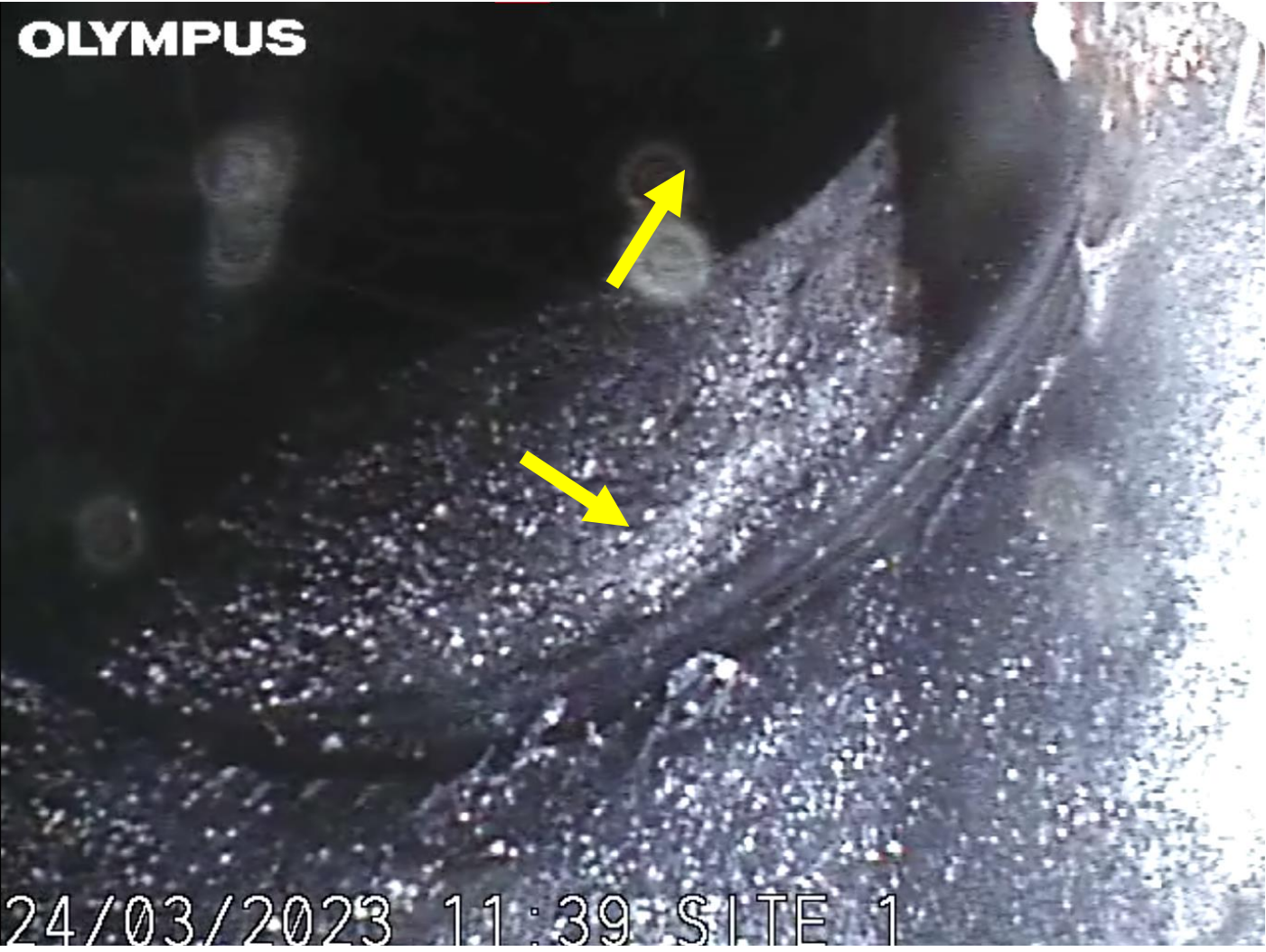
C Gaps- possibility of water ingress



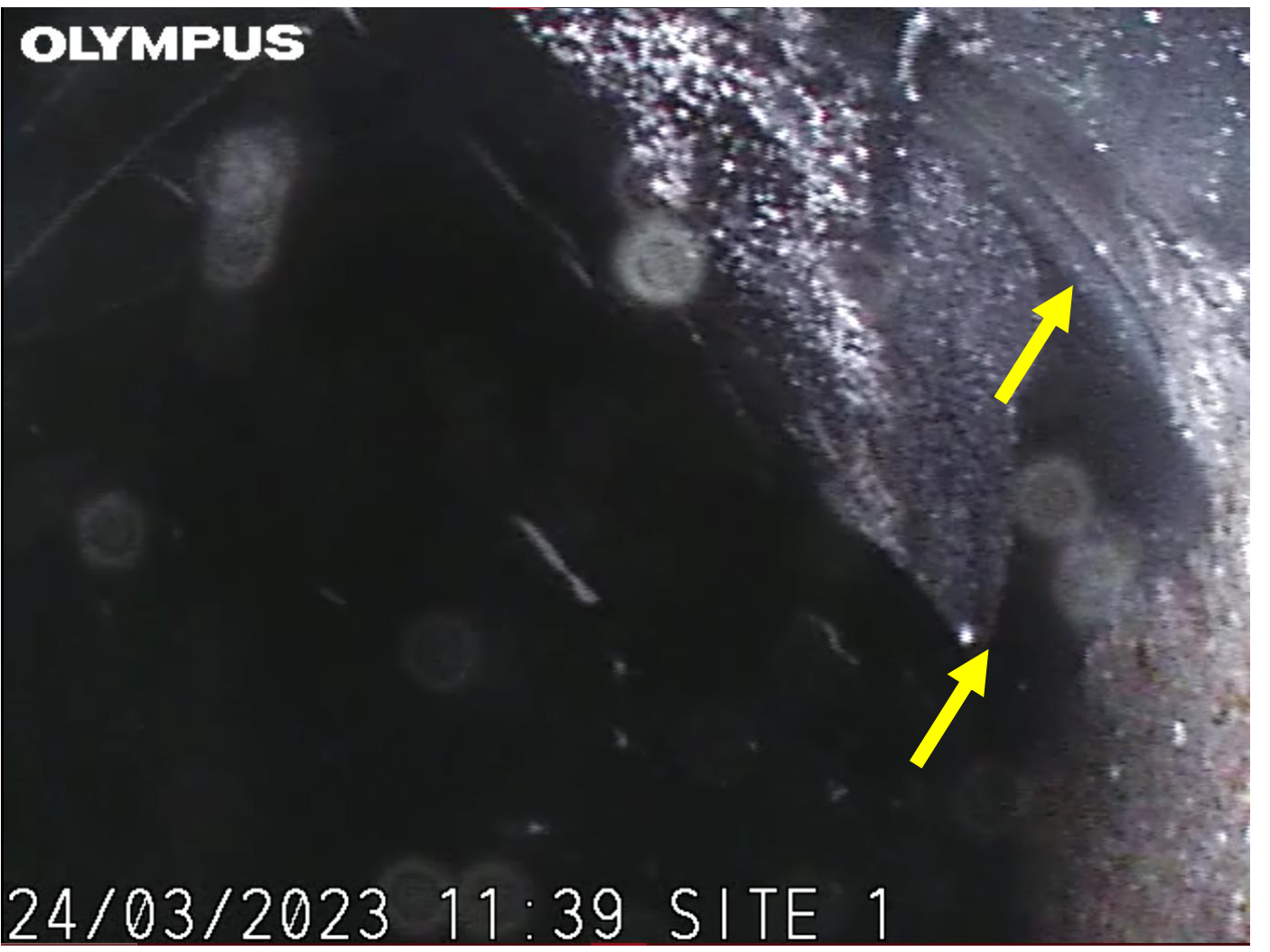
D Unknown type of materials and dirt's/concrete



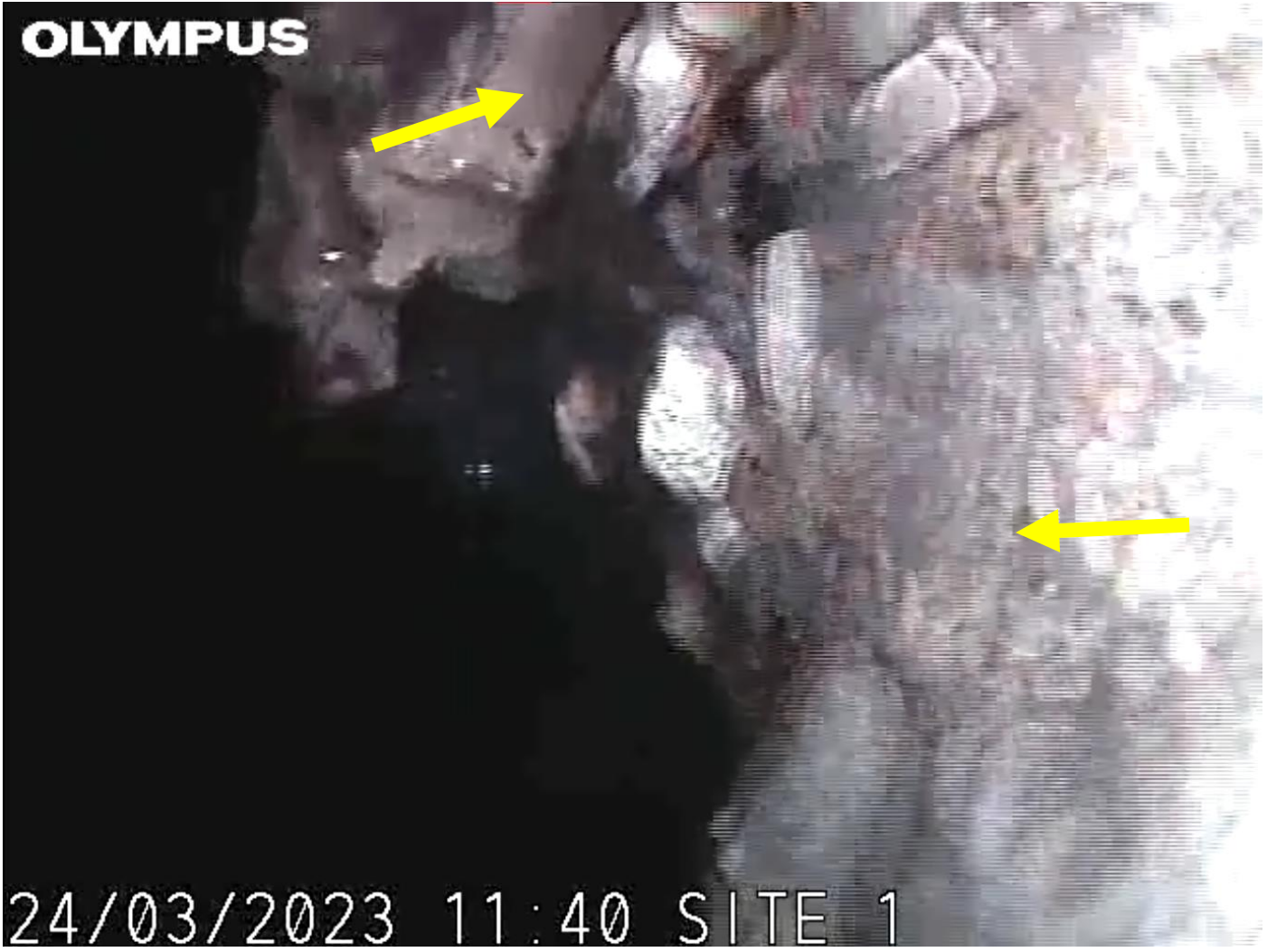
E Poor connection and Felt/pipe



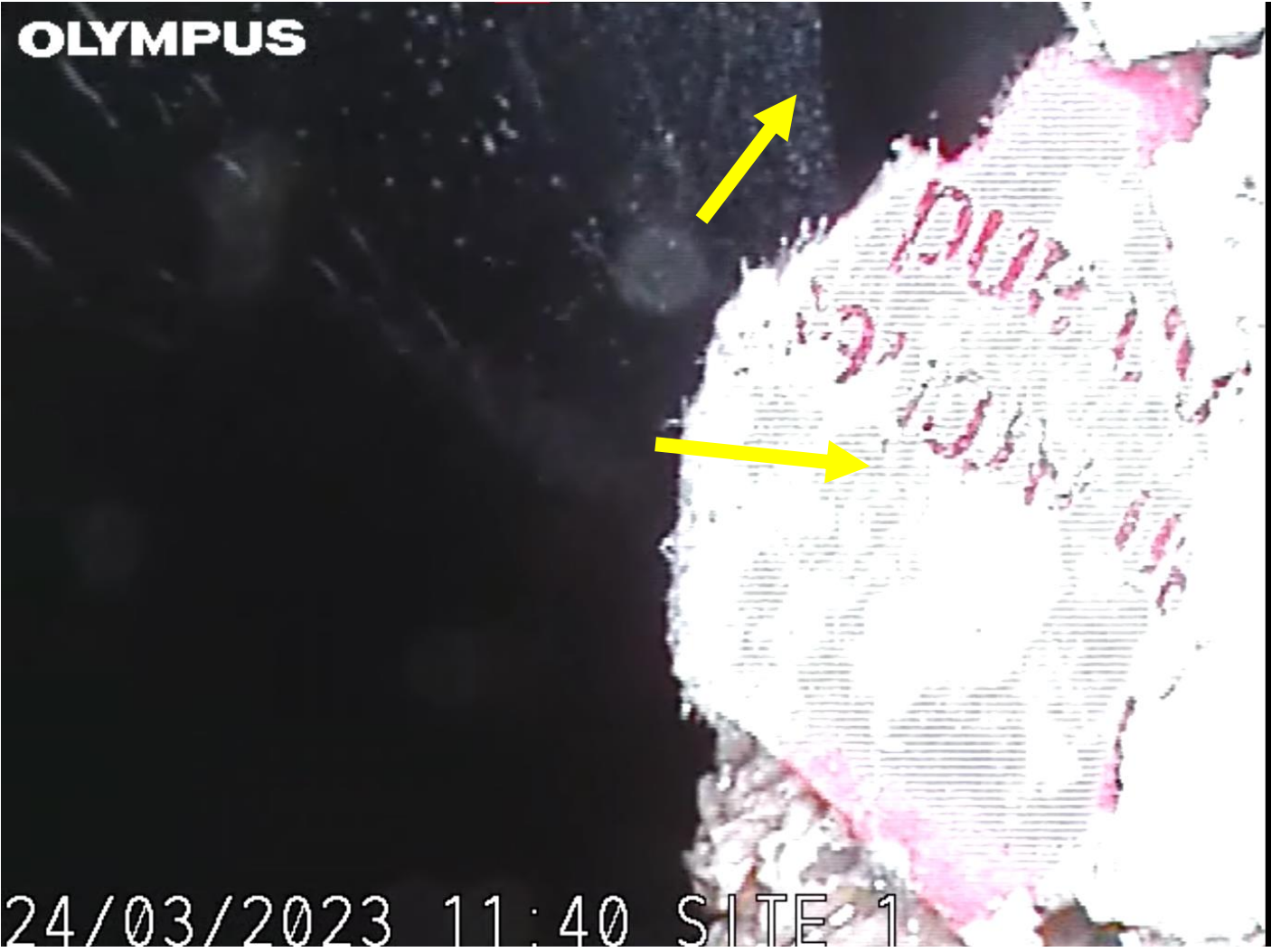
F Poor connection and Felt/pipe



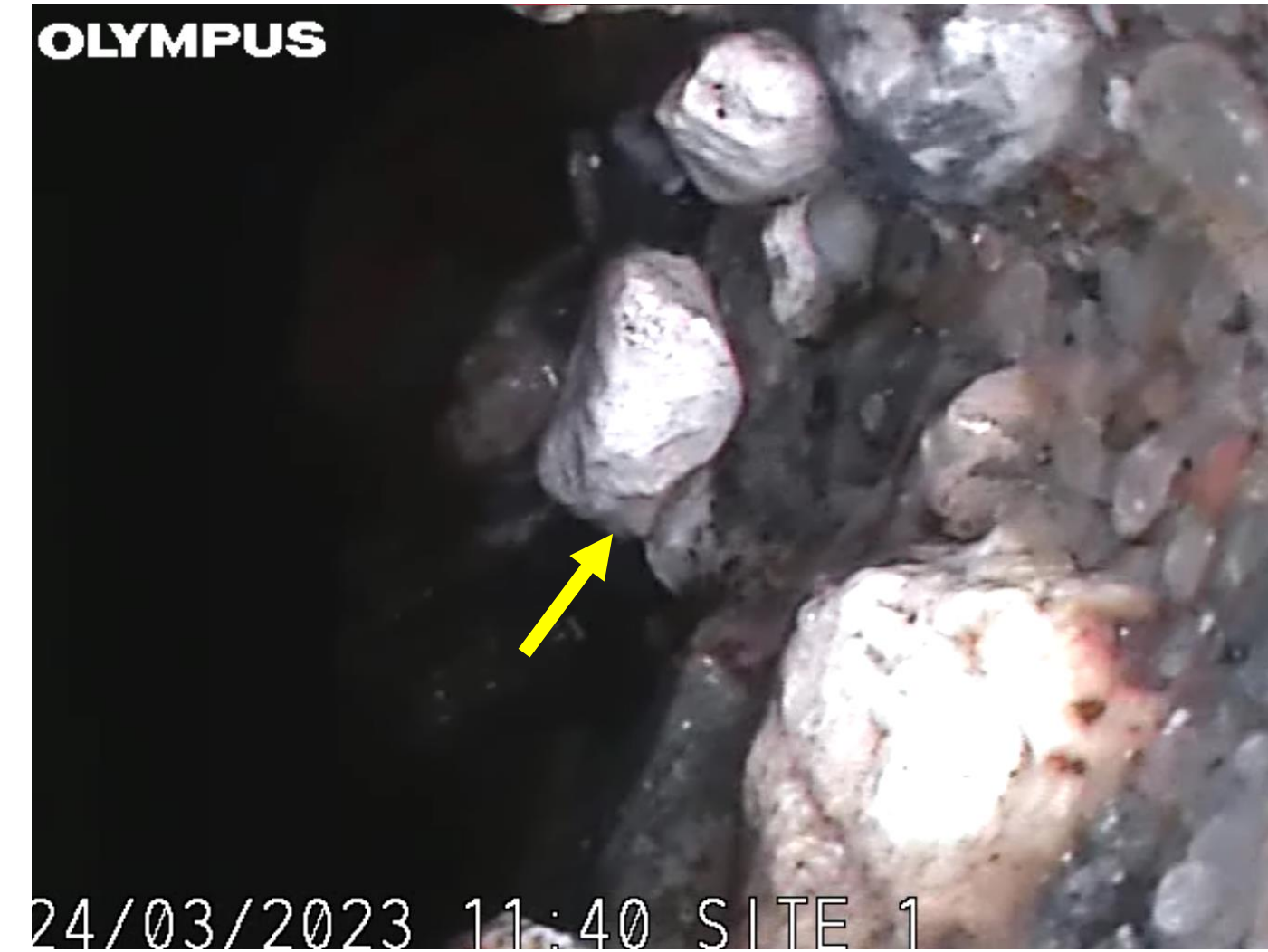
G Concrete



H Unknown materials bits and the Felt, concrete on background



I Concrete and stones wash out



J Felt and concrete



K Sharp objects and concrete – aluminium visible



L Felt/membrane visible

