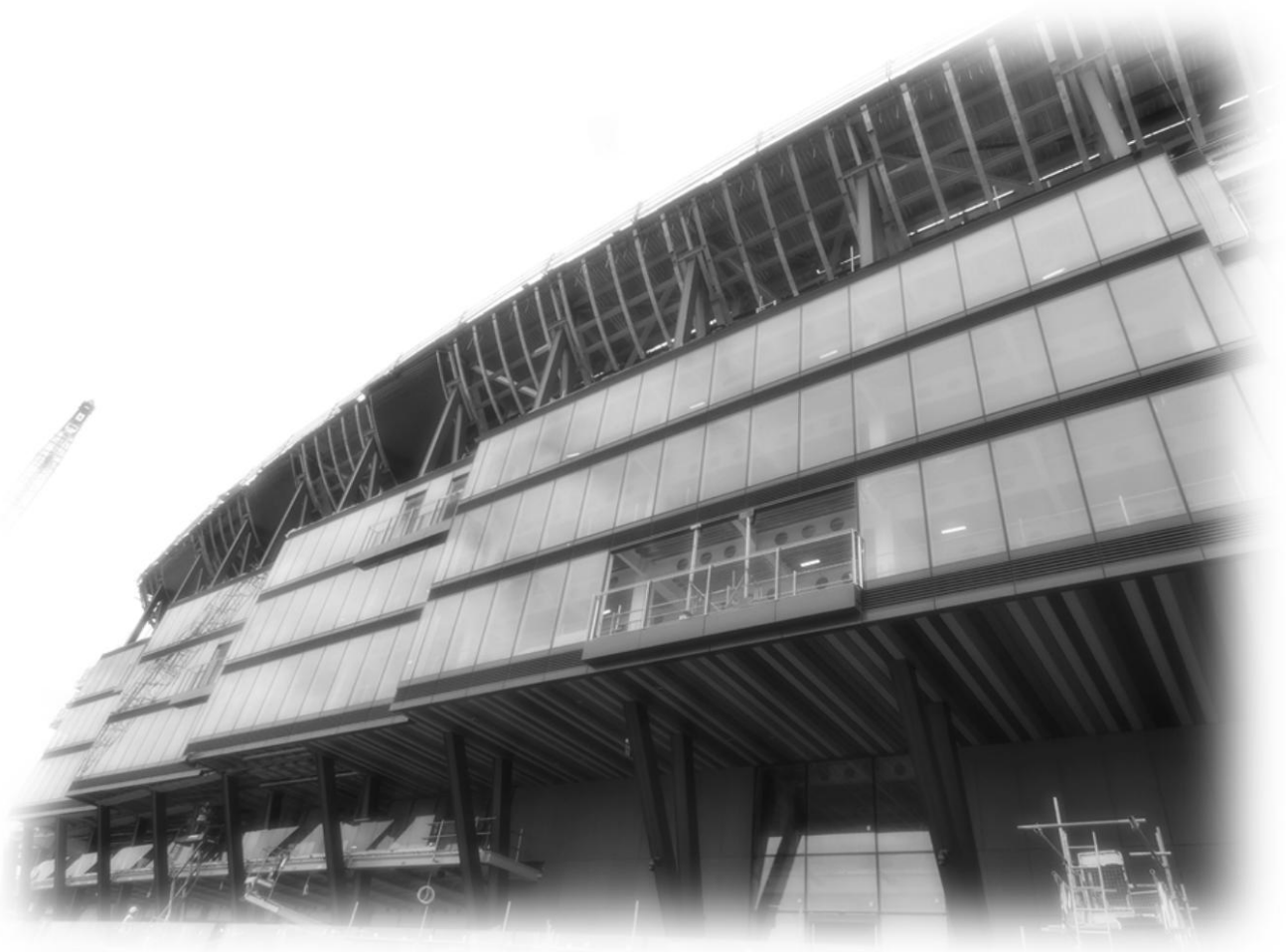


External - Observation Report

- Roof Issues, Gutters
- Unitise Panels
- Fullflow
- Curtain Wall Doors and Glass
- SFS and Firestop
- Rimex and Metal Soffit

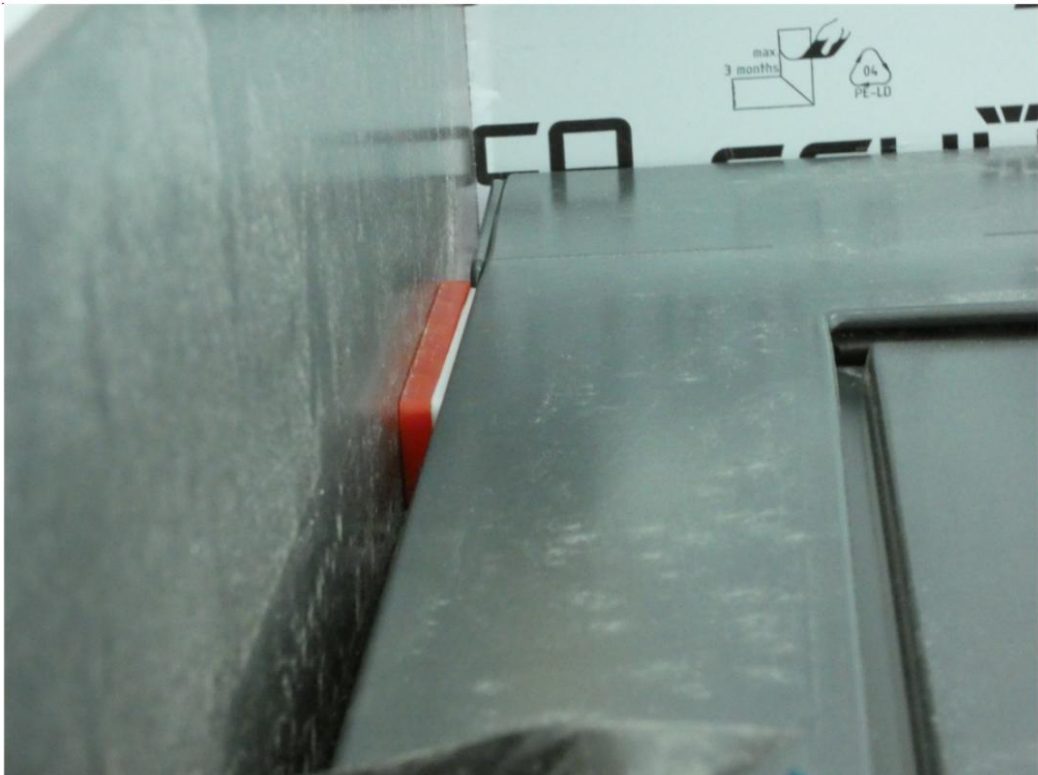


August 2021

External - Observation Report

Lev 0 - Doors

Doors Packers installed not deep enough for Mastic Seal (ratio 2:1)
What wild hold packers in position and prevent for falling down - shall we add a bit of mastic/glue?



External - Observation Report Lev 0 Doors

Blured and Widened View through the Door Glass



August 2021

External - Observation Report Lev 0 The Doors

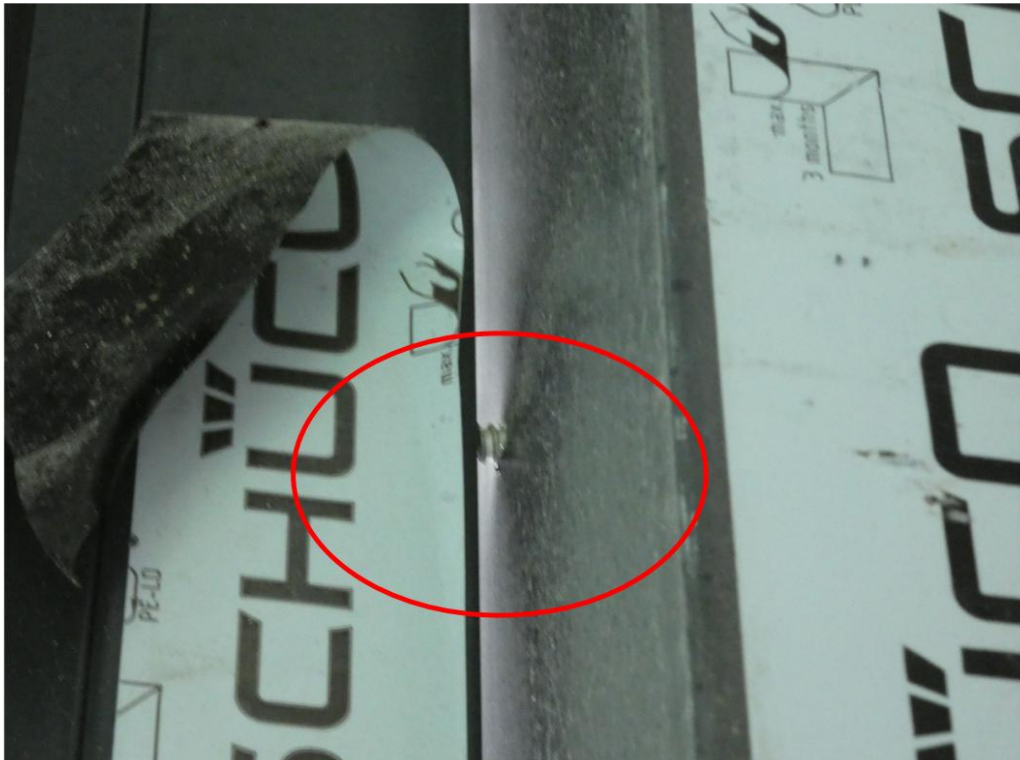
Blured and Widened View through the Door Glass



August 2021

External - Observation Report Lev 0 - Doors

Screws Loose and Frame Fixing Missing Packers .



External - Observation Report Lev 5 Unitise and Balustrades

Stainles Bolts/ nuts /washes and Galv brackets - no seperators between difrent type of metals



Photo 87 of 18

Uploaded by:
Peter Mazur
07/07/2021 10:01

Tags:
+ New tag

GPS coordinates:
51.4758738, -0.2
[Open in Google Maps](#)



Photo 85 c

Uploaded by:
Peter Mazur
07/07/2021 10:01

Tags:
+ New tag

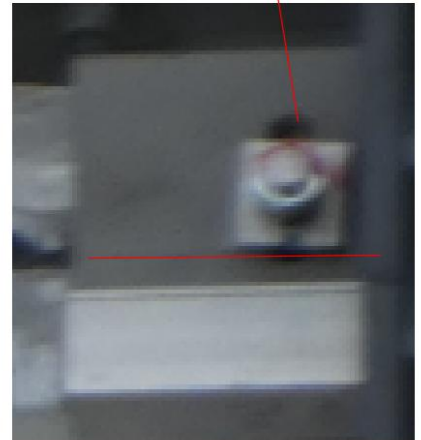
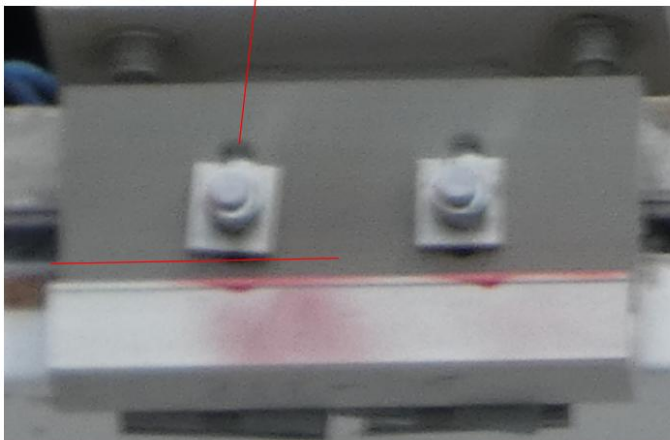
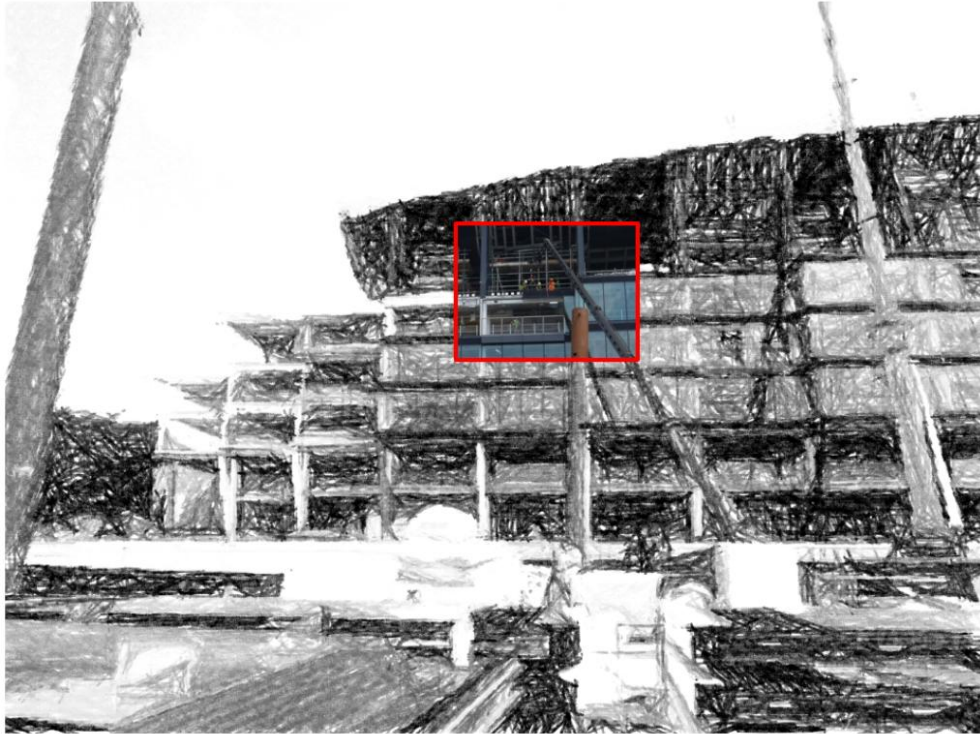
GPS coordinates:
51.4758738, -0.2
[Open in Google Maps](#)



August 2021

External - Observation Report Unitise Panels

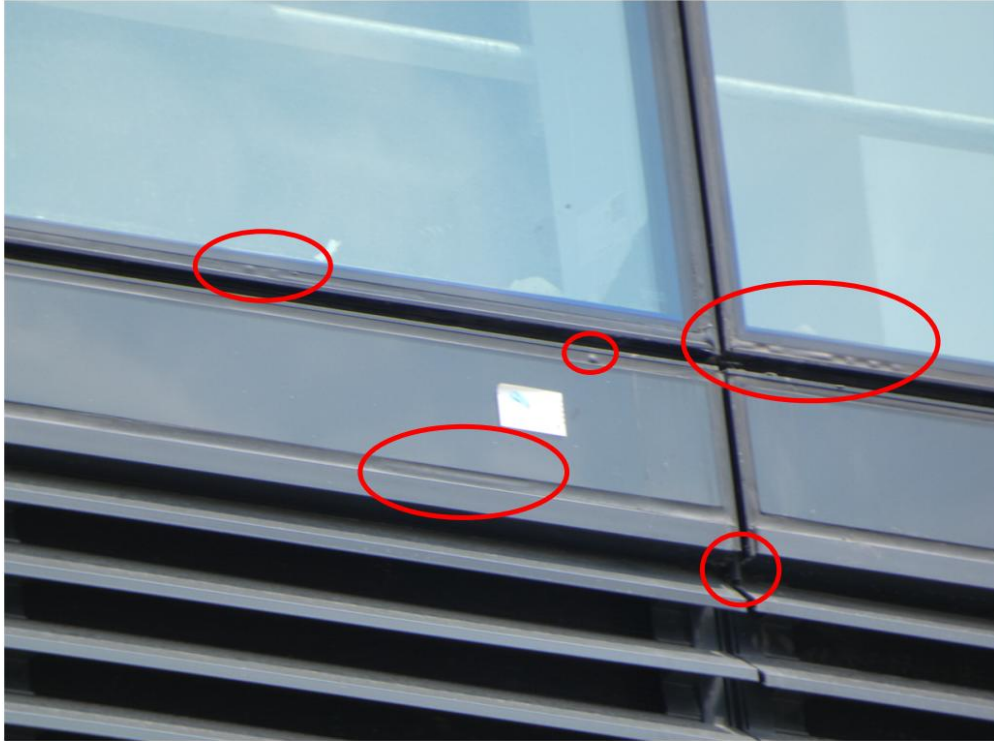
Brackets Must be Check and Torque Prior Unitise panels to be installed - Issues has been reported to Kaicer/DNA Immediatly. On photos below square washers not correct installed/twist to the grove triangle chanells. ITP, Brackets and Panels not to offer to BGCL for Inspection and Sign Off.



August 2021

External - Observation Report Unitise CW

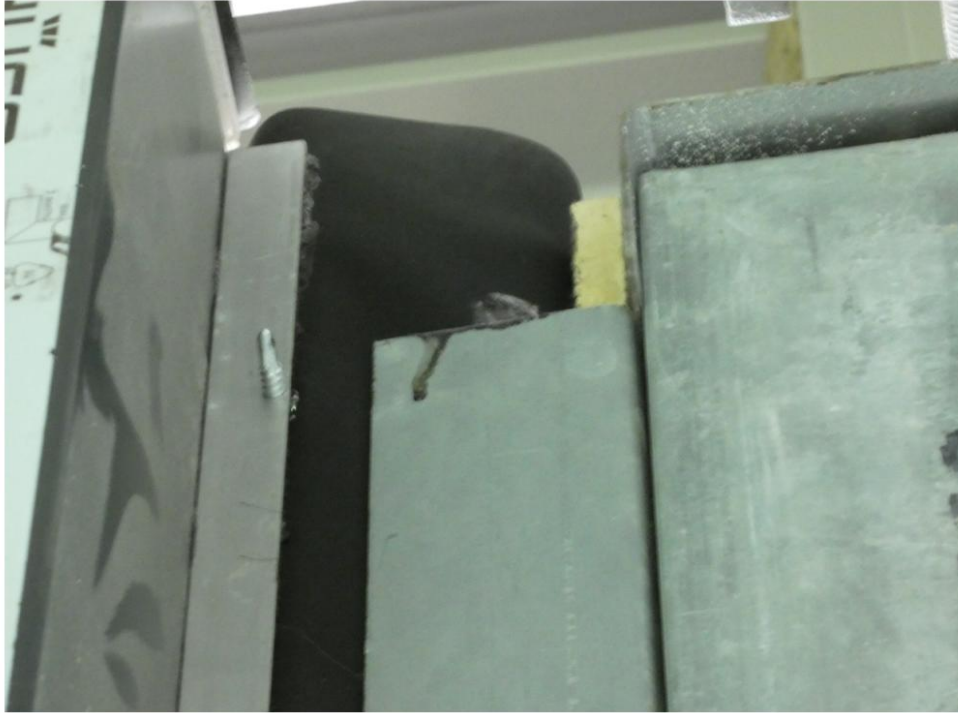
Typical Mastic Poor Applied by Sunvast and Missing Panel.
Gasket to long and sick out



August 2021

External - Observation Report SFS between Doors Riverside - lev 0

Sharp Edge of galv may damage weatherproof membrane. On Another photo there is insulation missing



External - Observation Report Unitise Panels lev 5

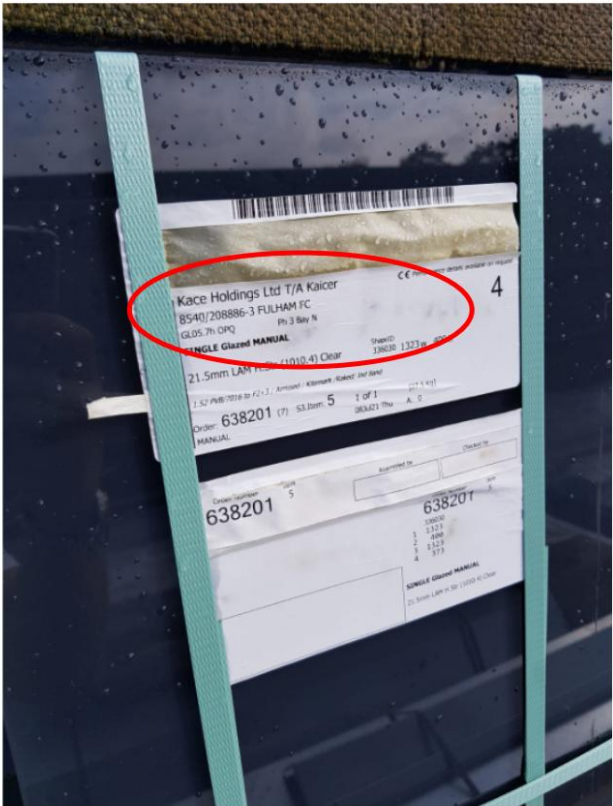
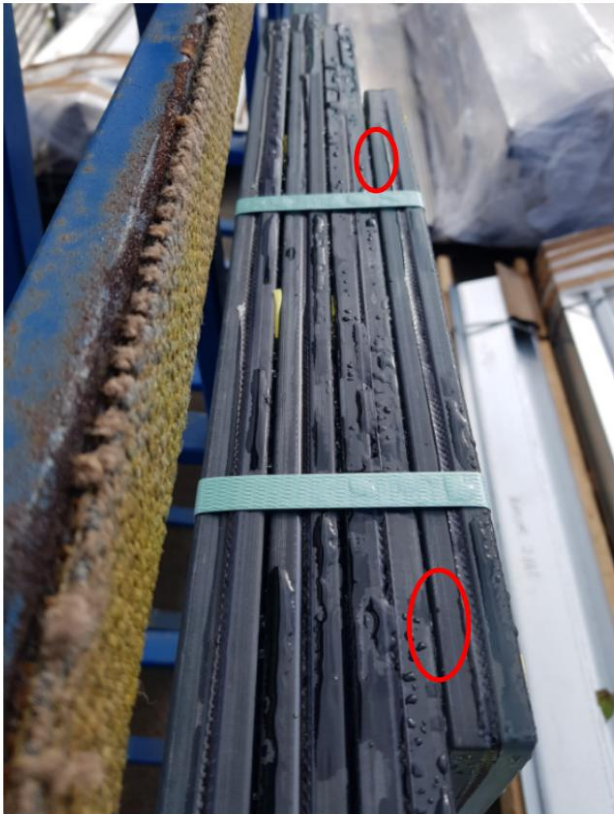
Sunvast blocking drainage channels with Fabrication Quality Control Check Sheets. All drainage to be check by Kaicer



External - Observation Report

Yard - Glass Panels

Glass Panels delivered to site poor protected - missing spacers and cover sheet, glass shall be individual protected.



August 2021

External - Observation Report Main Entrance Door

Kaicer do not interest to protect broken glass - there is sharp edge surface . BGCL recomend attached adhesive tape and protection.



August 2021

External - Observation Report Unitise Panels lev 5

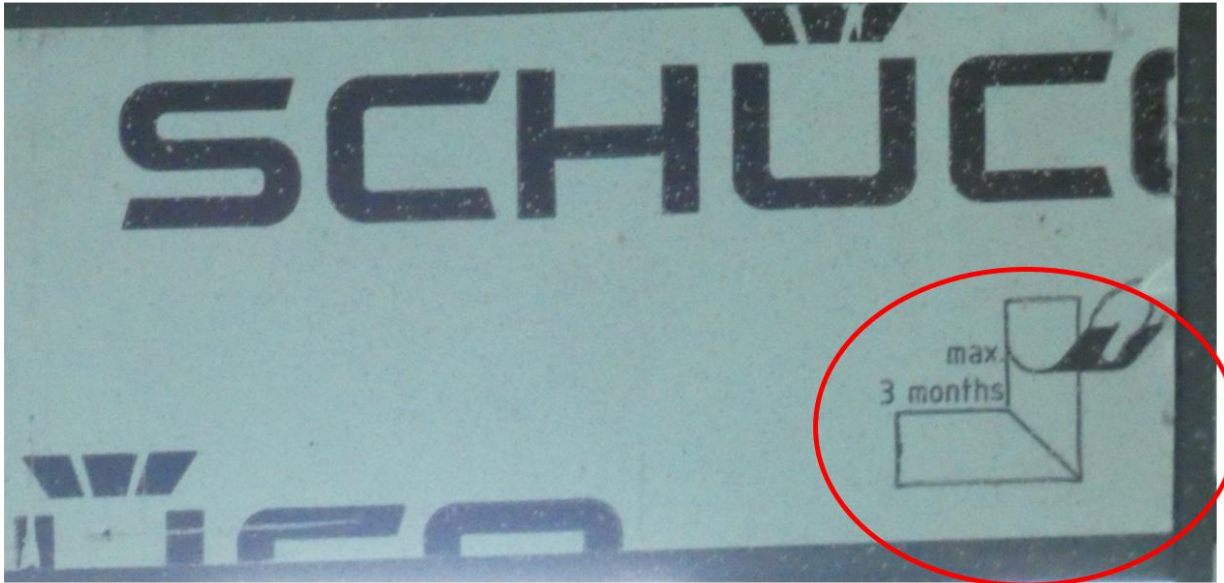
Unitise had damage / notch off top of Panels due to installing Balustrade top of Brackets . Kaicer / Sunvast to advise if Panels to loose performance.



August 2021

External - Observation Report Schucco - Doors and CW

On the Schucco Protection Film there is max 3 months information signs. Some of Curtain Wall/Doors due to to not completed on time have tape left over 6 months. Please contact to the schucco and advise if is any problem with the coating if Protection film is left / extend over 3 months.



Due to changed Details for Fixings Doors - top trim clashed against transom bolt - Kaicer to advise if these Doors Installed to the Frame as per Schucco Manual .



August 2021

External - Observation Report Fullflow Syphonic lev 6 and the Roof

Kaicers Subcontractor left rubbish on Level 6 and when they have cut pipes and damage - dent ventilation duct



August 2021

External - Observation Report Fulflow - Lev 6

Drainage Pipe no in the level as per Drawings, Pipe Cut Out was left on the roof



August 2021

External - Observation Report Roof - Gutter

Poor Qaulity of Welding Joints
Rust to be clean off from the Gutters



August 2021

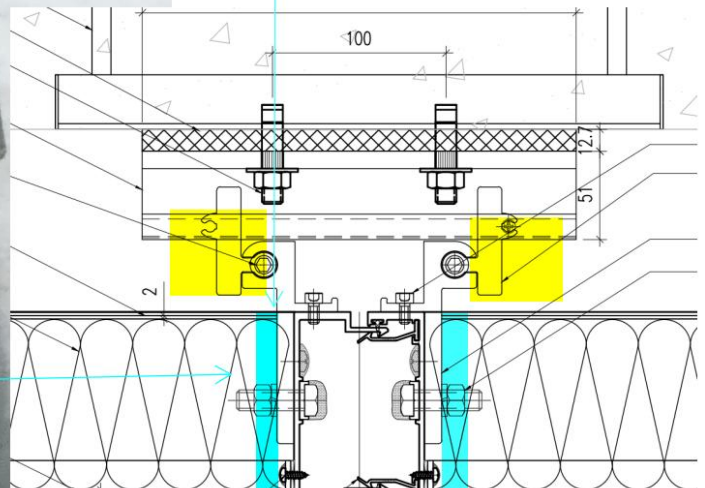
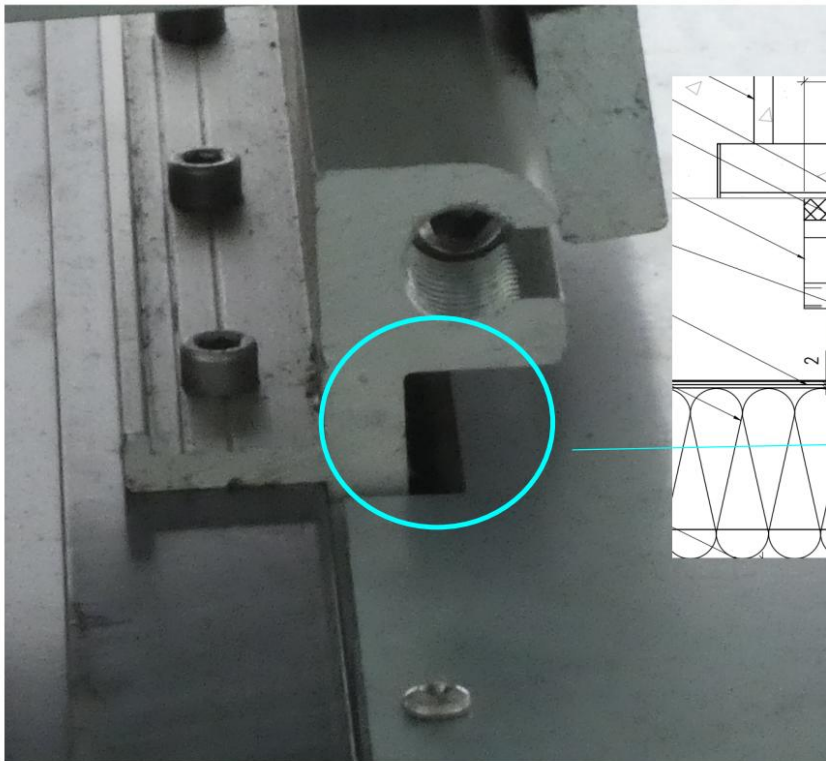
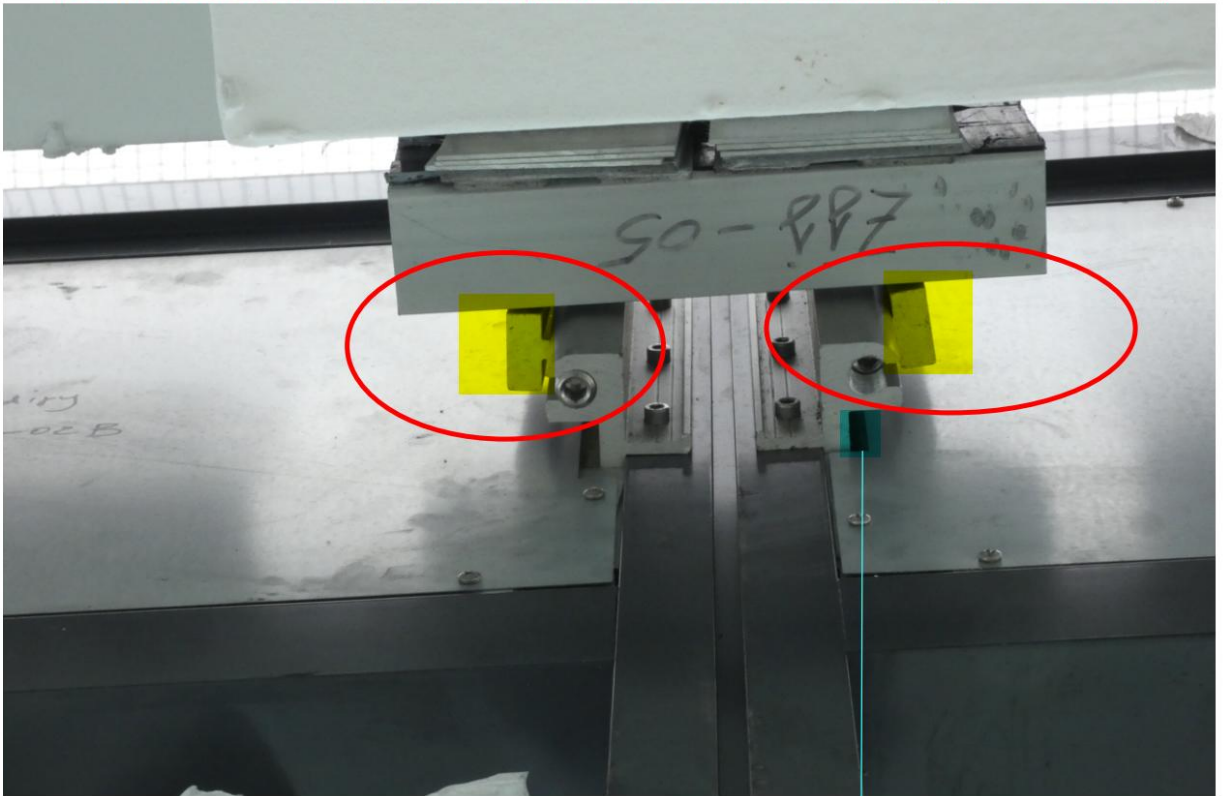
External - Observation Report Unitise CW - Lev 4

Unitise Panels Not Installed and Out Off Tollerance



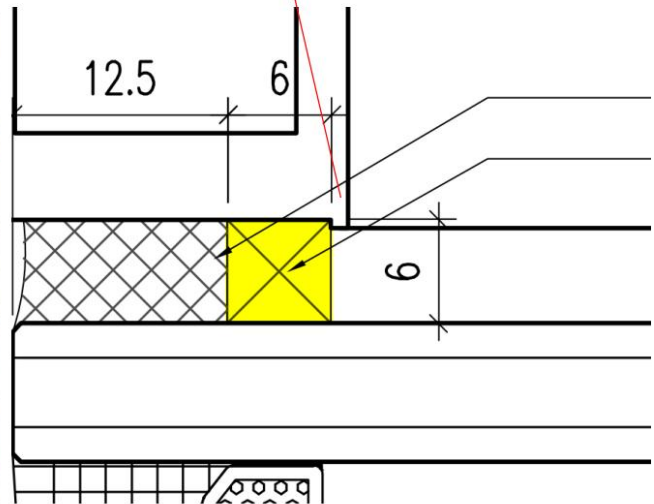
External - Observation Report Unitise CW - Lev 4

Brackets unnatural twist/ forced see mark yellow and drawing below.
Missing insulation and thermal gaps for insulation marked by blue.
No silicon between closure galv pale and panels - and risk of condensation ingress to the building.



External - Observation Report Unitise CW - Lev 4

Unitise Panels poor protected , debris and bits left from from Drilling and rust marks left on the surface



Foam Highlighte in Yellow shall be flush with transom/mulion surface no more $\pm 1\text{mm}$
Sunvast Fabricate unitise where this foam its a lot depper then should be - now is perfect environment to creat dust and will be difficult for a cleaning and mainatining.

External - Observation Report

SFS/GRC Firestop Lev 5 / 5-4 and 0-1

As per Report Below

IFCO Record			
IFCO PIN NUMBER	9	IFCO Title	No air gaps on horizontal cavity barriers
Description of the Issue	No air gaps have been observed between the horizontal cavity barriers and the cladding panels. Siderise recommend an air gap of maximum 50mm for this product to ventilate the facade.		
Associated Work Package		GRC cladding systems	
			
Location/Zone:		Floor Plan:	Riverside - Level 00
			

August 2021

External - Observation Report Rimex Soffit - lev 6 and Lev 1 top

Each trapezoidal Sheets to be re-check and sign off by BGCL. Photos Below shown Missing Fixings lev 6

Unitise Bottom Panels had no replaced and is damaged lev 1



External - Observation Report GRC Firestop Lev 5

GRC Panels not layout as per plan

