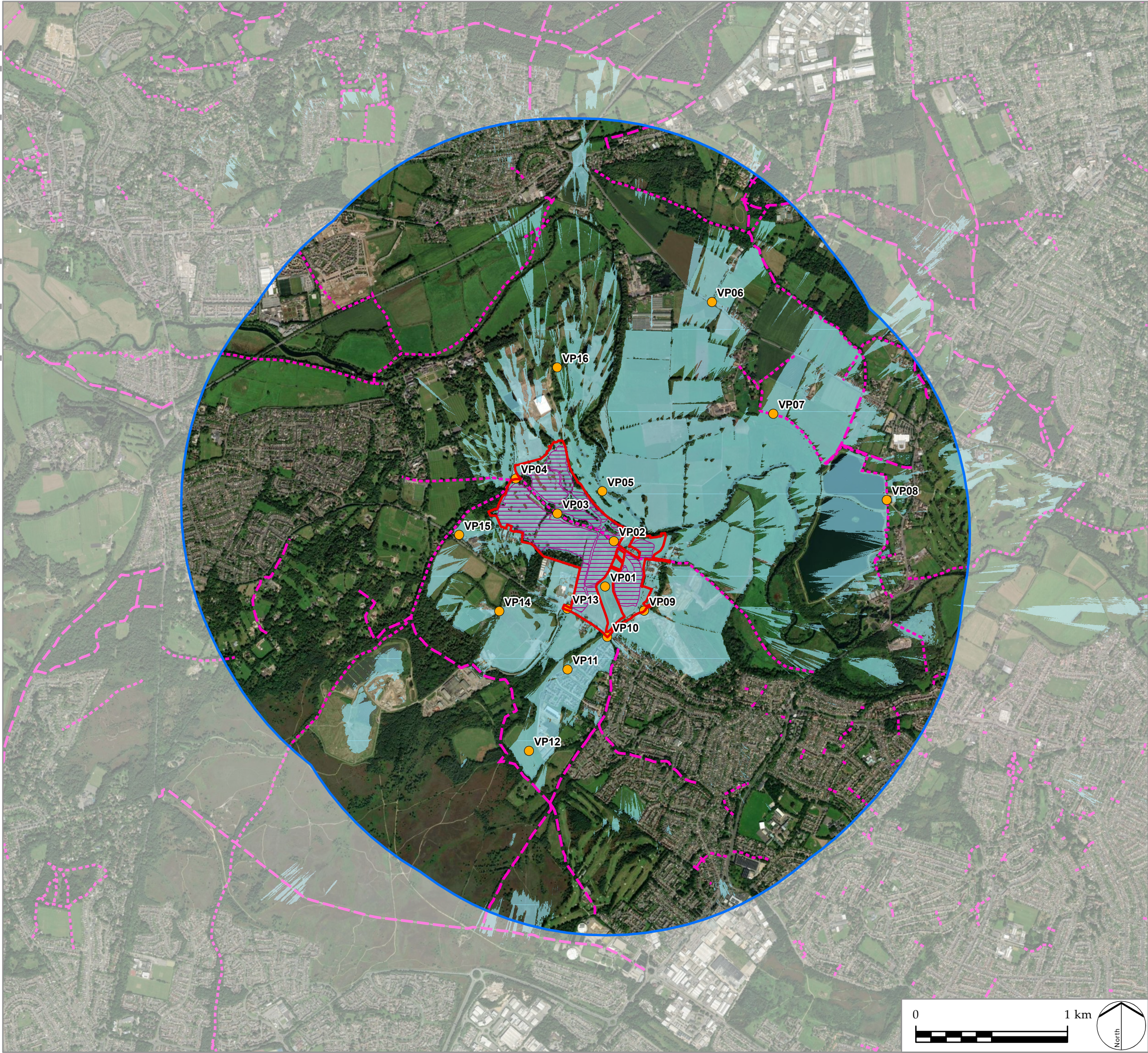


1 km Cumulative Mapping

Z:\9512\_CANFORD\_GARDEN\_VILLAGE\GIS\PROJECTS\9512\_SCOPING\_013\_016\APRX



LEGEND

Site boundary

Study Area (2km)

Indicative Development Areas

Zone of Theoretical Visibility (ZTV) (computer generated) - Based on building height of 12m

Public Rights of Way (PROW)

Footpath

Bridleway

Byway open to all traffic

Proposed Viewpoint Locations

This drawing is based upon computer generated Zone of Theoretical Visibility (ZTV) studies produced using the viewshed routine in the ESRI ArcGIS Suite. The areas shown are the maximum theoretical visibility, taking into account topography, vegetation and buildings which have been included in the model with the heights obtained from a LiDAR digital surface model.

Due to its resolution, the surface model does not take into account every localised feature such as walls, small hedgerows or small trees and therefore only gives an impression of the extent of visibility.

The ZTV includes an adjustment that allows for Earth's curvature and light refraction. It is based on LiDAR terrain data with a 2m<sup>2</sup> resolution.

# L D A DESIGN

PROJECT TITLE  
LAND AT NORTH OF MAGNA ROAD, POOLE

DRAWING TITLE  
Figure 4: Zone of Theoretical Visibility (ZTV) and Proposed Viewpoint Locations

ISSUED BY	Oxford	T:	01865 887 050
DATE	July 2025	DRAWN	KPr
SCALE @A3	1:25,000	CHECKED	PL
STATUS	Draft	APPROVED	PL

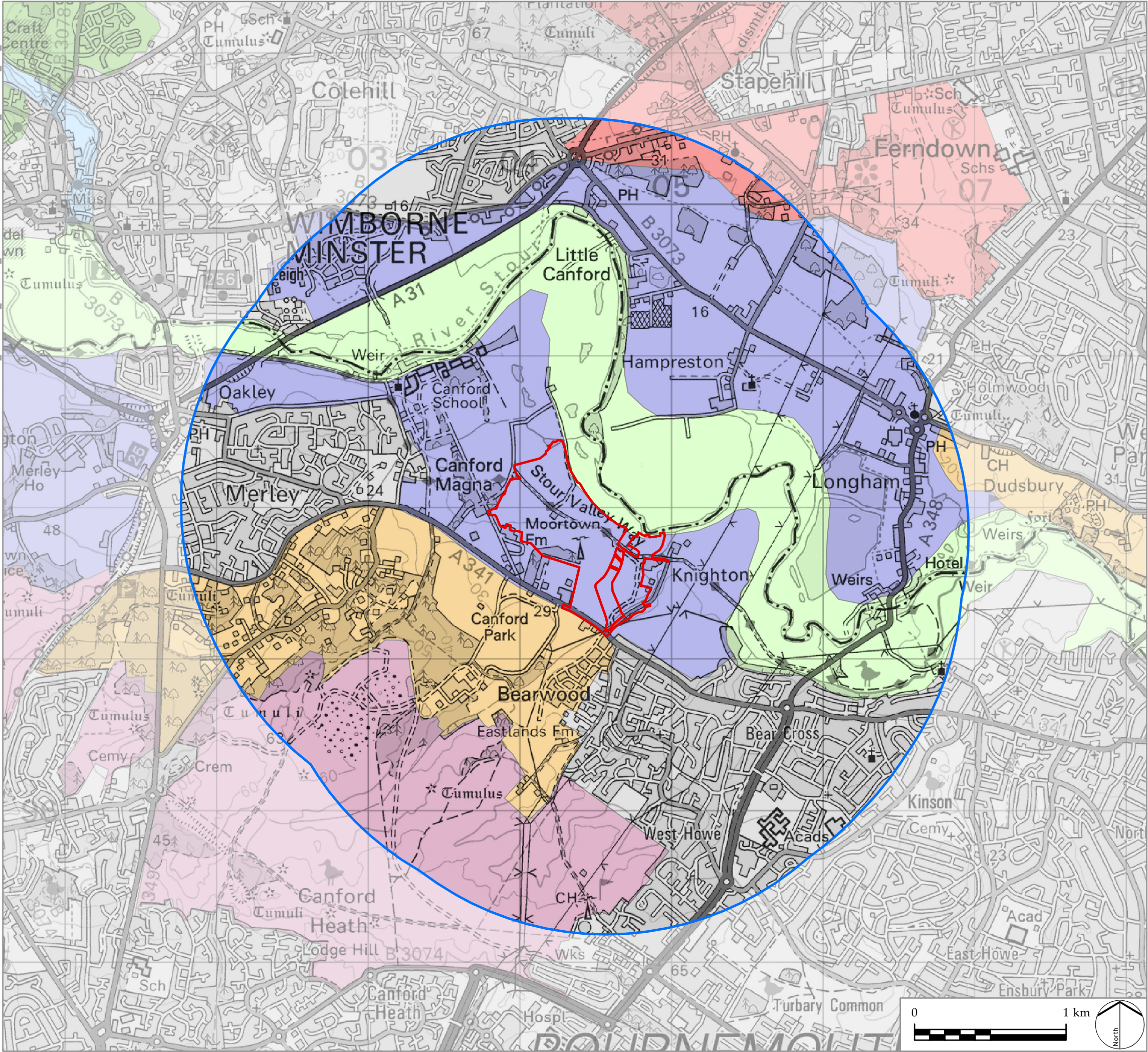
DWG. NO. 9512\_013\_ZTV

No dimensions are to be scaled from this drawing.  
All dimensions are to be checked on site.  
Area measurements for indicative purposes only.

© LDA Design Consulting Ltd. Quality Assured to BS EN ISO 9001 : 2015

Sources: Ordnance Survey, Environment Agency

Z:\9512\_CANFORD\_GARDEN\_VILLAGE\GIS\PROJECTS\9512\_SCOPING\_013\_016\APRX



LEGEND

Site boundary

Study Area (2km)

Dorset Landscape Character Types

Chalk River Valley Floor

Heath/Farmland Mosaic

Heath/Forest Mosaic

Lowland Heathland

River Terrace

Rolling Wooded Pasture

Valley Pasture

Urban

# LDĀDESIGN

PROJECT TITLE

LAND AT NORTH OF MAGNA ROAD, POOLE

DRAWING TITLE

Figure 5: Landscape Character Types

ISSUED BY	Oxford	T: 01865 887 050
DATE	July 2025	DRAWN KPr
SCALE @A3	1:25,000	CHECKED PL
STATUS	Draft	APPROVED PL

**DWG. NO. 9512\_014\_LCA**

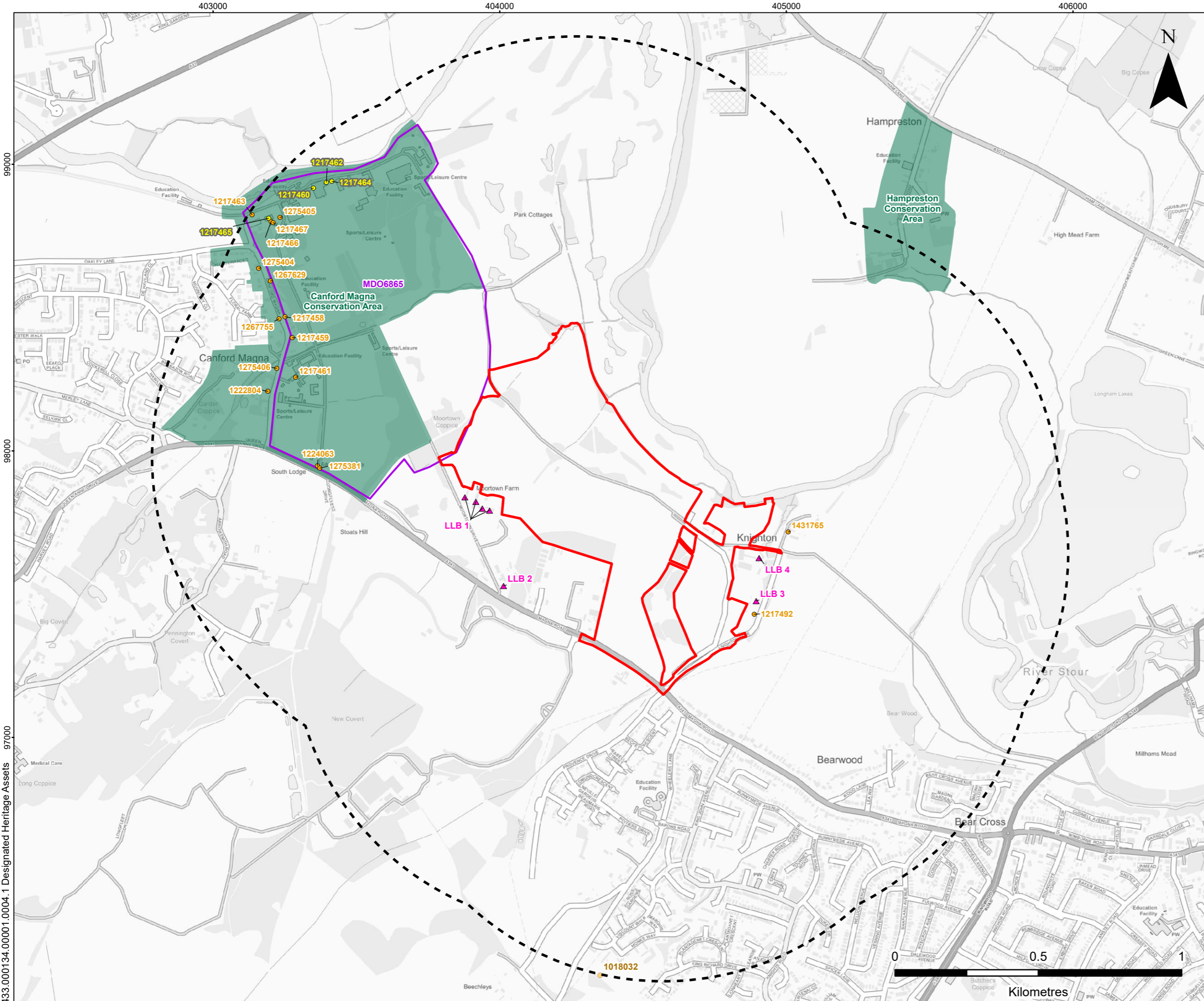
No dimensions are to be scaled from this drawing.  
All dimensions are to be checked on site.  
Area measurements for indicative purposes only.

© LDA Design Consulting Ltd. Quality Assured to BS EN ISO 9001 : 2015

Sources: Ordnance Survey, Dorset Council

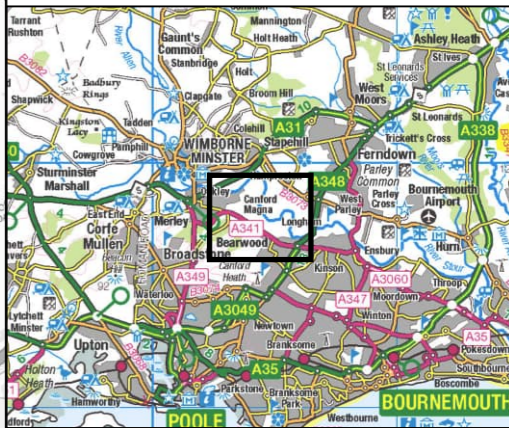
01 km

North



**LEGEND**

- Site Boundary
- Site Boundary 1 km Buffer
- Listed Building (Grade)**
  - I
  - II
- Scheduled Monument
- Conservation Area
- Locally Listed Building
- Garden of Local Significance



**W.H. WHITE LTD.**

LAND AT NORTH OF MAGNA ROAD, POOLE

HERITAGE DESK-BASED ASSESSMENT

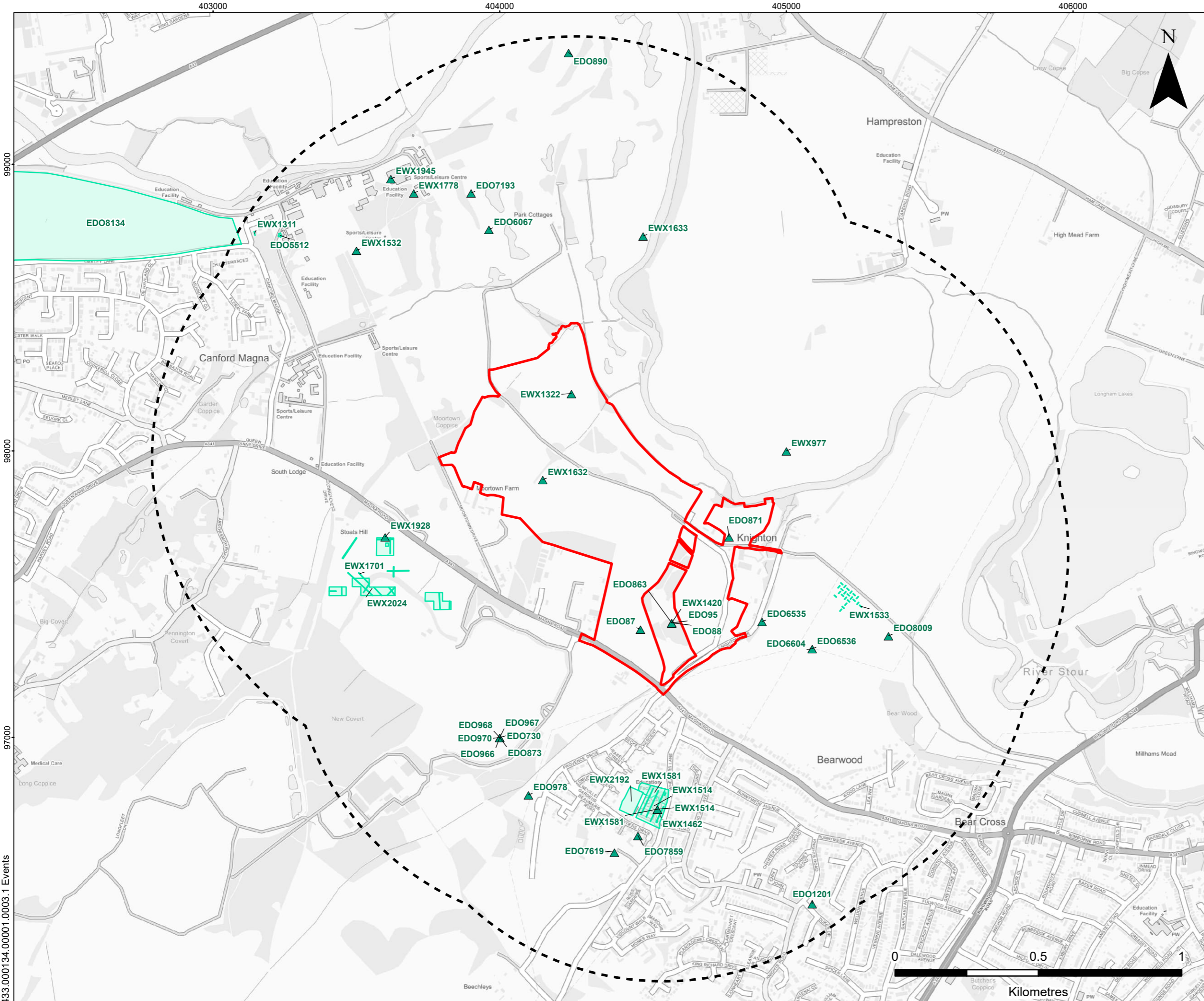
**DESIGNATED AND NON-DESIGNATED ASSETS**

**FIGURE 6.1**

Scale1:12,500 @ A3

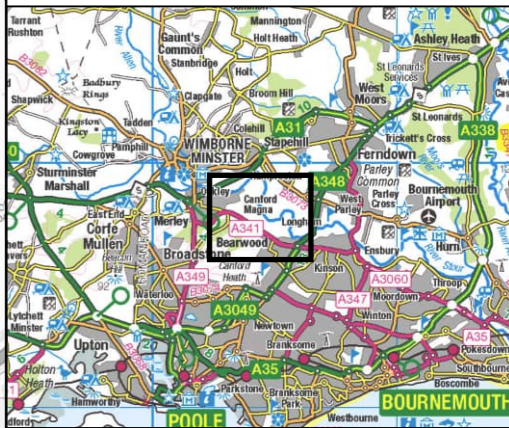
DateJULY 2025





LEGEND

- Site Boundary
- Site Boundary 1 km Buffer
- Event Location
- Event Area



**W.H. WHITE LTD.**

LAND AT NORTH OF MAGNA ROAD, POOLE

HERITAGE DESK-BASED ASSESSMENT

**HISTORIC ENVIRONMENT RECORD EVENTS DATA**

**FIGURE 6.3**

Scale  
1:12,500 @ A3

Date  
JULY 2025



Making Sustainability Happen