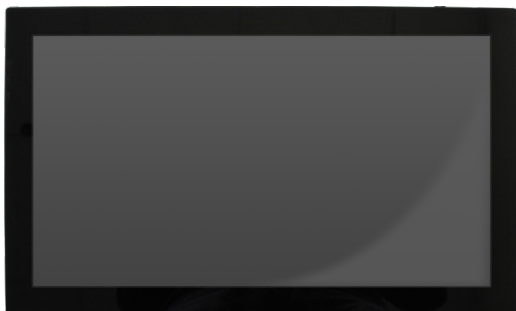


# Temperature Taking Bundle For Wall Mounting, Desktop or Floor Stand/Cart Application



*Stay ahead of the curve with Mimo Monitors' cutting-edge, touch-free temperature-taking kiosk bundle*

Mimo Tablet Bundles for Channel - Desk	
FG Bundle Part Number	Bundle Description
MCT-10HPQ-POE-TMPMD	10.1" Tablet Bundle CMS Desktop
MCT-156HPQ-POE-TMPMD	15.6" Tablet Bundle CMS Desktop
MCT-215HPQ-TMPMD	21.5" Tablet Bundle CMS Desktop
Mimo Tablet Bundles for Channel - Wall	
FG Bundle Part Number	Bundle Description
MCT-10HPQ-POE-TMPMW	10.1" Tablet Bundle CMS Wall Mount
MCT-156HPQ-POE-TMPMW	15.6" Tablet Bundle CMS Wall Mount
MCT-215HPQ-TMPMW	21.5" Tablet Bundle CMS Wall Mount
Mimo Tablet Bundles for Channel - Floor	
FG Bundle Part Number	Bundle Description
MCT-10HPQ-POE-TMPMF	10.1" Tablet Bundle CMS Floor Stand
MCT-156HPQ-POE-TMPMF	15.6" Tablet Bundle CMS Floor Stand
MCT-215HPQ-TMPMF	21.5" Tablet Bundle CMS Floor Stand

Stay ahead of the curve with the new, groundbreaking temperature taking touch-free bundle, ensuring everyone entering any building or public place is fever-free. Including all the necessary components needed to protect businesses and communities, this enterprise-grade bundle is reliable, customizable, and seamless to use. This bundle contains a Mimo Monitors Android commercial Adapt-IQV tablet, Revel Digital's CMS, analytics and accurate temperature sensing software with a one year license and a choice of wall mount, desktop stand or floor stand/cart.

Durable, customizable, and intuitive to use, this hardware/software bundle can be personalized to fit the needs of every business. Created with ultimate flexibility in mind, this software is able to display different messages on the screen to provide instructions, and through its thorough analytics system can be connected with existing databases to track personal temperatures daily and keep this on record for supreme safety. Due to the enterprise-grade nature of the bundle, the devices are also able to sync and work together for the most accurate results and all-encompassing picture.

Ideal for entrances to grocery stores, assisted living facilities, office buildings, schools, or in taxi's prior to riding, this device uses advanced medical sensors to take a person's temperature and ensure they are not putting others at risk. These devices have been designed for Level One Triage only. Seamless to set up and efficient to use, this groundbreaking touch-free temperature bundle can provide the peace of mind needed.

## Important Installation Specifications

- Sensor should be installed 58" from the ground
- There should not be any solid objects within 4' of the front of the display
- After installed, wait 30 minutes for sensors to equalize to room temperature and humidity levels

## Enterprise Applications

**Scenario #1:** Entry to School/Business/Gov Buildings/Stores Collect data match to id's through the "dynamic hubs"

- Notify Attendant - Person NOT to enter and go straight to medical assist
- Notifications can be sent – depending on configuration

**Scenario #2:** Counter top systems, VESA mount systems, integrated systems

- Place in hotel / on visitation check in counters
- Mount at door entry, check out lanes



Floor Stand



Counter Top



Wall Mounted

**NOTE:**

- This document is based mainly on tracking/identifying abnormal temperature readings in people
- It should be know that Revel can also track age/gender, time of day, any number of variables along with temperature
- Bundled with Hesvidia technology – we can also scan id's and merge data if required by companies, schools, agencies
- Your information and privacy abide by all HIPPA laws

# Analytics

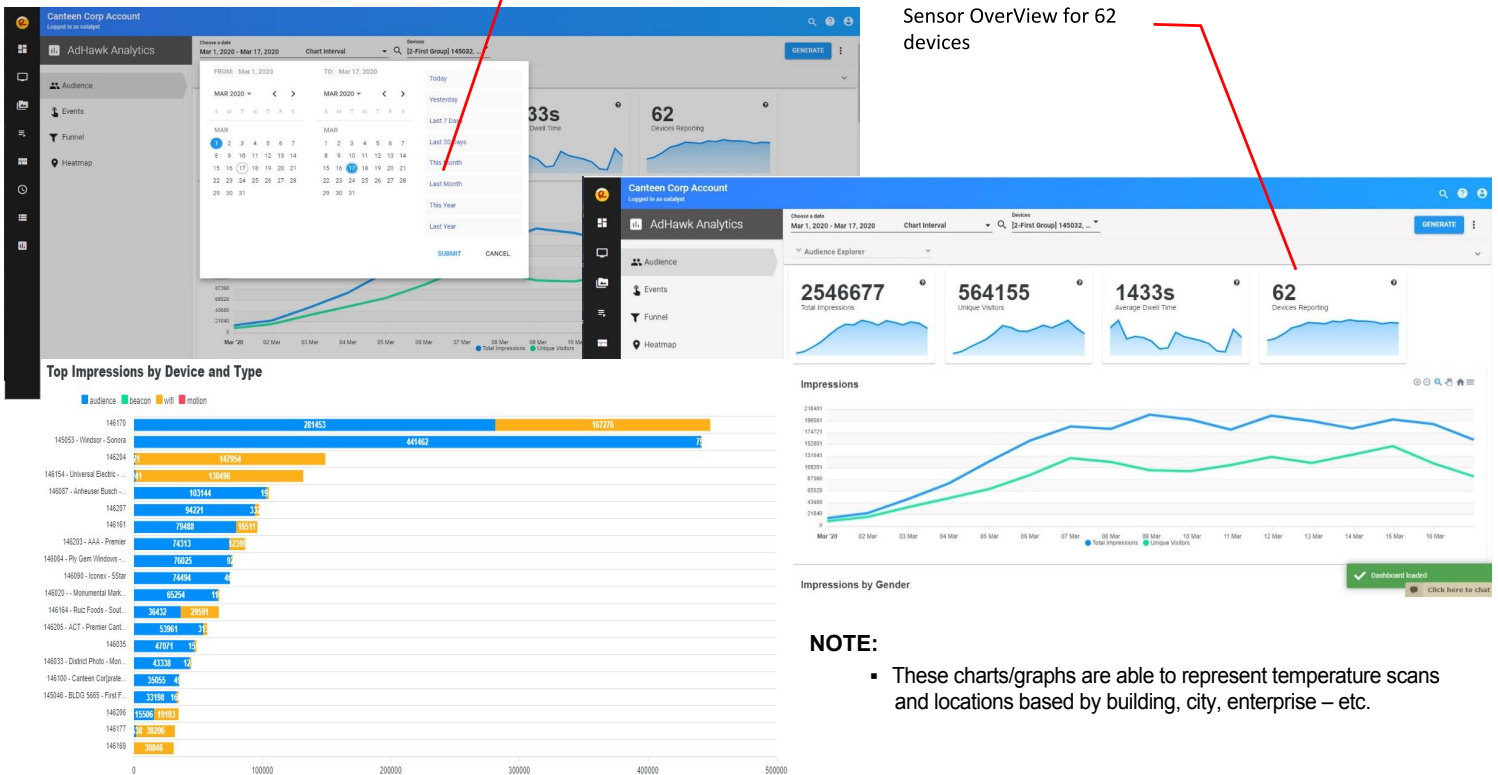
One key benefit with this system is the merging of signage with IoT devices, allowing for a safe working environment and keeping community members safe. Other benefits include:

- can notify you when the sensors are down
- collect and produce analytic reports
- provide real-time data
- provide a method of revenue generation / messaging

# Analytics Samples

Select: Date Range  
Device Groups

Sensor OverView for 62 devices



**NOTE:**

- These charts/graphs are able to represent temperature scans and locations based by building, city, enterprise – etc.

## List of possible features:

1. Facial detection analytics
2. Connection to database
3. Digital signage messaging
4. LED lights/green and red
5. Notify attendant or HR via text or email
6. Device management
7. ID scanning and verification against database
8. Unlock and door access
9. Revenue generating messaging
10. Network multiple units together
11. Covid-19 survey pass/fail prior to check-in
12. Virtual receptionist
13. Takes attendance
14. Counts people
15. Traffic attenuation
16. Custom branding
17. Voice activation capable
18. News/Weather/Wall St. widgets
19. Building entry pass printing capabilities
20. Crowd Control/Traffic attenuation/restricts entrance until quantity inside is approved
21. Contactless solution via QR code scan:  
Transfer of touch to mobile phone

## Benefits of Adapt-IQV

### Built for long-term use and support

The Adapt-IQV is designed and supported as a long term commercial product. The external specifications and tooling are controlled to ensure a long product life, which is crucial for maintaining continuity for all phases of project rollouts and service. The internal assemblies were developed for the Adapt-IQV and are not subject to obsolescence. While internal components have changed for the better, this can be done without modification by the end user.

### Quad Core ARM A17

The tablet uses a quad core Cortex A17 chipset with a 1.8GHz peak frequency that supports the latest ARM processor optimized package. Apps launch instantly and run smoothly. The processor features a quad-core GPU, so that all graphic-intensive apps are fluid and lifelike. All this, combined with 2GB of dual-channel DDR3 memory, distinguishes our tablet from other solutions.

### High-quality tempered glass multi-touch panel

The Adapt-IQV by Mimo features a 10 point multi-touch projected capacitive panel. The capacitive touch panel is made of scratch-free tempered glass, and produced with a double-deck glass process and advanced laser carving. The touch panel responds fast and accurately without dead corners, allowing users to easily interact with your designed app.

### VESA mount, wired Ethernet

Unlike consumer tablets, the Adapt-IQV is designed with VESA mounting holes on the back, and an SD card with protection cap to meet the demanding environment of commercial and retail installations. In addition to the built-in Wi-Fi, our tablet comes with a wired RJ45 Ethernet connection and a SD memory slot to expand the internal memory. Along with wired Ethernet, the Adapt-IQV can also connect printers, bar code scanners, or any other USB accessory to the USB ports located on the back side tablet.

### Add on module slot

The Adapt-IQV by Mimo has 3 USB based add on module slots. These slots are designed to accept a magnetic stripe reader, 2D barcode reader, NFC module and more. New hardware capabilities can be added for future requirements.

### Play full HD video smoothly, support, Flash & HTML5

The Adapt-IQV by Mimo plays 4k videos smoothly, and is compatible with 480P, 720P, and 1080p videos in all kinds of formats: TS, H.264, WMV, MPEG4, etc. The tablet supports Adobe Flash 11.0 and HTML5 animation technology, and can easily access dynamic webpage, and on-line videos or games.

### The best equipped commercial and retail tablet

The Adapt-IQV is fully equipped with all the typical tablet functions for running advanced and sophisticated client applications and offering users a rich and interactive experience.

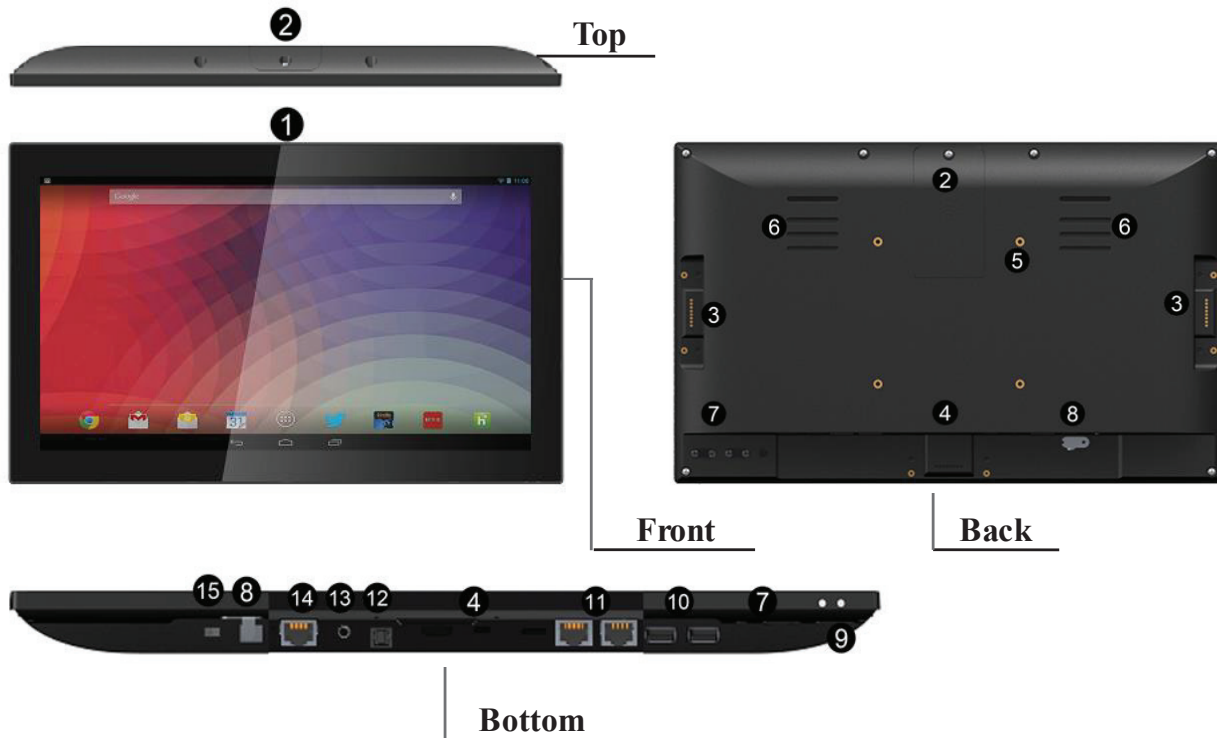
### Elegant, light, durable, modern, professional

The Adapt-IQV 21.5" is designed with high-quality ABS case with modern zero-bezel design, thus greatly improving scratch resistance.

## Tablet Technical Specifications for 21.5"

Infrared Temperature Monitor	Case Size	50 (L) x 30 (W) x 15 (T) mm    1.9 (L) x 1.18 (W) x 0.6 (T) inches
	Weight	15 g   0.53 oz
	Interface	UART, USB, micro-USB
	Temperature	+/- 0.2°C @ 50 cm   0.36°F @ 19 in
	Ultra-sonic Sensing Distance	2 cm ~ 100 cm   1 in ~ 39 in
	Calibration	Factory calibrated
	Output format <cm, °C >	Distance, temperature
	Alarm	High temperature or proximity alarm
Display	TFT LCD	21.5" inch configuration
	Number of Pixel	1920 x 1080
	Aspect Ratio	16:9 wide
	Touch Panel	10 point touch projected capacitive
	Back-light	LED Side-light type
	Brightness	250 cd/m2
	Contrast Ratio	3000:1
Media Format	Video	MKV, TS, FLV, AVI, VOB, MPG, DAT, ASF, RM, MOV, 3GP, MP4, WMV
	Audio	MP2, WMA, WAV, AAC, OGG, ASF
	Picture	JPG, BMP, GIF
I/O	USB x2	USB 2.0 host type A×5
	Ethernet Port x2	USB 2.0RJ45 Communication Port host type A×5
	Micro USB	Micro USB 2.0 × 1
Speakers	High quality speaker	3W ×2
	Amplifier	3W x2
Power	Power requirement	DC 12V±5% input – barrel connector
	Power consumption	1KHz audio playback: ~18W max. - Off: 0W
	AC/DC Adapter	AC 100-240Vac, 1.5A max. 50-60Hz, 12V/1.5A AC/DC Adapter supplied
	LED	ON: Green - Timer standby: Orange - OFF: light off
	Switch	Power switch on back
Ethernet	RJ45	10/100/1000Mbps LAN
Wireless	Wi-Fi	802.11 a/b/g/n/ac Dual Band 2.4 and 5.0 GHz
	Bluetooth	BT4.0
Function Keys	Keys button	+, -, Up, Down, Menu/Enter
Barcode Scanner	Barcode Scanner	2D Barcode scanner (optional)
Hardware Systems	CPU	Cortex-A17, Quad Core, up to 1.8 GHz
	DRAM Memory	2GB DDR3 SDRAM
	Storage Memory	8GB eMMC Flash
	External Memory	SD Card (SDHC Class10 compatible)
	Software / OS	Android 6.0 Marshmallow
General Information	Case design	Body and cover are black ABS & PC
	Dimensions without add-ons	Width: 536.6mm x Height: 330.2mm x Depth: 44.5mm
	Weight without add-ons	6,236g (main body only, excluding AC adapter and metal bracket)
	Mounting	100mm x 100mm VESA mounting screw holes
	Clock Battery (for RTC)	Lithium-ion non-rechargeable coin battery
	Storage Temp	-15 -- 65 degrees C
	Working Temp	-10 --50 degrees C
	Storage / Working Humidity	10 – 90% non-condensing
	MTBF	50,000 hours demonstrated
	Warranty	3 years
	Certifications	FCC, CE, & RoHS

# Mechanical Design of 10.1", 15.6" & 21.5"



1. **Camera (optional):** 2M pixels camera
2. **SD Card Slot / Cover:** support external SD card
3. **Add-on module slot:** to put optional add-on module
4. **Micro-USB Port:** support Micro-USB 2.0
5. **VESA Mount Holes:** for installing the bracket
6. **Speakers:** audio output
7. **Function Keys (Vol+ / Vol- / Up / Down / Exit)**
8. **AC/DC In Jack:** powered by 12V/3A AC/DC input
9. **IR Receiver & LED Indicator**

IR Receiver: support remote control

LED Indicator:

Power supply ON	Red then turn Green after kernel boot up.
Power supply OFF	LED light off.

10. **USB Port x 2:** support USB 2.0 Host type A
11. **RS232 Port x 2:** in RJ45 connector form
12. **S/PDIF Port:** support S/PDIF audio output
13. **Headset + Microphone Jack**
14. **10/100Mbps RJ45 Ethernet Port:** support Ethernet connection
15. **Power Switch:** switch power ON/OFF



We believe in touchscreens with human touch.

We believe the world should be more interactive, and provide you with the best user experience possible.

We believe in listening to our customers because we know that the best hardware is made through collaboration.

These core beliefs drive everything that we do here at Mimo Monitors.

**Small Touchscreens. Flexible Innovation. Human Connection.**

**PROUDLY TRUSTED BY**



**Mimo Monitors**  
743 Alexander Rd. Suite 15  
Princeton, NJ 08540  
  
info@mimomonitors.com  
Sales: **1-855-YES-MIMO (937-6466)**

2020-0609  
Rev 2 - 80165