

Q1, 2025

Coal Energy

FROM THE MINE TO THE UTILITY

2024 Coal Miner's Memorial

**COAL FLEET CAN UNDERPIN ENERGY ABUNDANCE
AGENDA**

**Trump's Support of Coal Will Keep Energy Costs
Low, Benefit Economy**

TABLE OF CONTENTS

Memorial:



17 2024 MINER'S
MEMORIAL

World News:



15 FUTURECOAL
LAUNCHES
SOUTHERN AFRICA
CHAPTER

Feature:



06 THE COAL FLEET
CAN UNDERPIN THE
ENERGY ABUNDANCE
AGENDA

Feature:



29 TRUMP'S SUPPORT OF THE COAL
INDUSTRY WILL KEEP ENERGY
COSTS LOW, BENEFIT ECONOMY,
EXPERTS SAY

IN EVERY ISSUE:

03	Letter From The Publisher
04	Association Comparisons
09	News Briefs
23	Association Members
31	Industry Events
32	Upcoming Issue
32	Index to Advertisers



LETTER FROM THE PUBLISHER



Dear Readers,

Welcome to Issue 1, 2025 of **Coal Energy**.

This edition contains our annual memorial dedication to honor the brave miners who passed away due to mining accidents in the coal industry. **Coal Energy**, along with our sponsors, would like all of us to take some time to remember these brave souls that lost their lives in 2024. Without these courageous miners, the coal industry would not exist. We are extremely thankful to our sponsors who have made this dedication possible.

Coal Energy remains proud to be the source journal for information about coal related associations in the industry. We currently provide information at your fingertips on

different groups to benefit your companies' needs and targets. By providing information at a glance on each group, and including current member lists, your company can analyze the forums available to market, promote, and lobby for America's future regarding coal energy.

In this issue, we also take a look at opinions related to Trump's "Unleashing American Energy" executive order. In our world news department, FutureCoal launches a Southern Africa chapter.

Coal Energy also presents recent press releases at a glance for the previous quarter. From financial news and product releases, to grants and awards, please email info@martonickpublications.com with any news that may be considered for publish in following issues.

Please visit our website, www.coalenergyonline.com, for current and prior editions of **Coal Energy**.

With the ongoing trend and convenience of electronic publications, we are pleased to inform you our online readership is increasing daily. To be added to our digital delivery database, please send an email to info@martonickpublications.com with your subject as Digital Delivery.

We extend a warm appreciation to our supporting advertisers, please support them as they make the publication you are reading possible. If your target market spans across to members of more than one coal association, then **Coal Energy**

is the place for you to represent your company. Please contact our advertising sales representatives should you require additional information at 866-387-0967.

And again, thank you for picking up, or clicking on, another edition of **Coal Energy**.

If you have any questions, editorial submissions, or comments about **Coal Energy** please feel free to email me directly at maria@martonickpublications.com.

Warmest regards,

Maria Martonick

President

Martonick Publications, Inc.

866-387-0967



Published & Produced By:

Martonick Publications, Inc.
PO Box 244322
Boynton Beach, FL 33424

Toll Free Phone: (866) 387-0967
Toll Free Fax: (866) 458-6557

info@martonickpublications.com
www.coalenergyonline.com

President:
Maria Martonick

Vice President:
Jenna Lynn

Managing Editor:
A.J. Raleigh

Research Coordinator:
Vivian Mofeed

Contributing Writers:
Maria Martonick, Chris Hamilton,
Estrella Vil, Elena Anwar, Rich
Nolan, Dan Maloney, Thomson
Reuters, Kevin Clark, Kevin
Killough.

Graphic Designer:
Abdalla Mansour

COAL ENERGY IS INDEPENDENTLY PUBLISHED, AND IS NEITHER AFFILIATED WITH OR ENDORSES ANY INDIVIDUAL ASSOCIATION.
THE OPINIONS EXPRESSED BY THE AUTHORS OF THE ARTICLES CONTAINED IN COAL ENERGY ARE THOSE OF THE RESPECTIVE AUTHORS, AND DO NOT NECESSARILY REPRESENT THE OPINION OF THE PUBLISHER. © COPYRIGHT 2025

Association Comparisons



www.nma.org

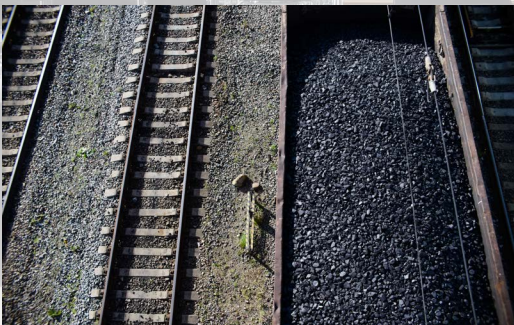
NATIONAL MINING ASSOCIATION (NMA)

Mission:

The NMA's mission is to build support for public policies that will help Americans fully and responsibly benefit from our abundant natural resources. Our objective is to engage in and influence the public process on the most significant and timely issues that impact mining's ability to safely and sustainably locate, permit, mine, transport and utilize the nation's vast resources.

NMA SERVES ITS MEMBERSHIP BY:

- Promoting the safe production and use of coal and mineral resources
- Establishing a strong political presence in the Nation's Capital
- Serving as the information center for and a single voice of U.S. mining
- Addressing the current and future policy needs of U.S. mining, mining equipment manufacturers and support for services members of NMA.

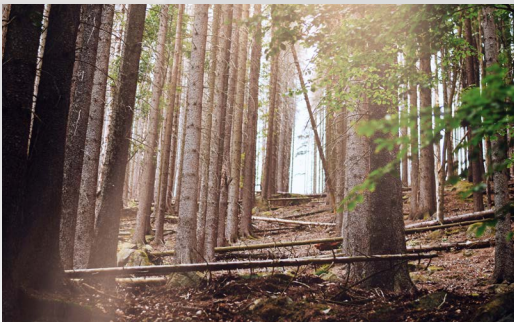


www.movecoal.org

NATIONAL COAL TRANSPORTATION ASSOCIATION (NCTA)

Mission:

The mission of the NCTA is to provide education and facilitation for the resolution of coal transportation issues in order to serve the needs of the general public, industry, and all modes of transportation. This is accomplished through the sponsoring of educational fora and providing opportunities for the lawful exchange of ideas and knowledge with all elements of the coal transportation infrastructure.



www.asrs.us

AMERICAN SOCIETY OF RECLAMATION SCIENCES (ASRS)

Mission:

ASRS's mission is to represent and serve a diverse international community of scientists, practitioners, private industry, technicians, educators, planners, and government regulators involved in mineral extraction and disturbed ecosystem reclamation.

ASRS promotes the advancement of basic and applied reclamation science through research and technology transfer in the Society's annual meetings, workshops, published proceedings, newsletters, Reclamation Matters publication, Reclamation Sciences, and the ASRS website.



www.acaa-usa.org

AMERICAN COAL ASH ASSOCIATION (ACAA)

Mission:

The ACAA advances the management and use of coal combustion products in ways that are environmentally responsible, technically sound, commercially competitive and more supportive of a sustainable global community.



www.americancoalcouncil.org

AMERICAN COAL COUNCIL (ACC)

Mission:

American Coal Council (ACC) provides relevant educational programs, market intelligence, advocacy support and peer-to-peer networking forums to advance members' commercial and professional development interests.

ACC represents the collective interests of the American coal industry in advocating for coal as an economic, abundant and environmentally sound critical resource.

ACC serves as an essential resource for industry, policy makers and public interest groups. The Association supports activities and objectives that advance coal supply, consumption, transportation and trading.



www.futurecoal.org

FUTURECOAL

FutureCoal represents industry leaders, committed to building a sustainable future for global coal.



www.alltricitynetwork.org

ALLTRICITY NETWORK

Mission:

This short statement outlines the association's identity and business activities. The Mission Statement was modified to more clearly emphasize what the organization is, why it exists and who we serve:

Preparing the electric energy industry for the future through education and networking.

Since 1903, Alltricity Network has been an association by members, for members. Employees from member companies drive program content by serving on the association committees, presenting at events, writing in Alltricity Network's publications and providing feedback to the staff. Members also advocate for Alltricity Network, and the association sees growth because of the outstanding word-of-mouth promotion by members. When a member brings their colleague to an Alltricity Network event, that person experiences what the association is all about and leaves with an appreciation for the content and the trusted community of sharing. Electric energy professionals know they can get answers from Alltricity Network because of the knowledge and friendliness of the members. By working together through the association, they are driving their industry forward.

By: Rich Nolan

The Coal Fleet Can Underpin the Energy Abundance Agenda

The U.S. needs more dispatchable electricity—and we need it immediately. Power demand is exploding across the country at the very moment the nation's grid reliability is teetering on the edge of catastrophe.

The reshoring of heavy industry and the unprecedented AI-driven data center boom have collided with the Biden administration's effort to wipe out the coal fleet and make it impossible to build new baseload coal and natural gas plants.

President Trump is already tackling this crisis. On his first day in office, he declared an energy emergency, issued an "Unleashing American Energy" executive order and has since established the National Energy Dominance Council to refocus the nation's energy policy. Reliability and affordability have once again taken center stage.

But the challenge facing the administration is enormous. U.S. electricity demand is projected to fully double by 2050 with a remarkable jump in demand already underway. A recent forecast sees demand rising 128 gigawatts (GW) over just the next five years—equivalent to adding 80 million homes to our already overstretched and under-supplied grid.

As the administration looks for reliable, immediately available generating capacity, the underutilized coal fleet is the answer hiding in plain sight.

Battered by an unrelenting regulatory agenda and unfair competition from heavily subsidized power sources, the coal fleet's capacity factor – a measure of how often it's providing power to the grid – rests at just 40%. The fleet is capable of much more. It is our strategic electricity reserve waiting for its moment. And that moment is now.

How much more power can the fleet provide? Consider its per-



formance in critical, high-demand weeks and months. The coal fleet regularly ramps up generation, often reaching capacity factors above 60%. As recently as 2021, there were several months when the fleet had a capacity factor above 65%.

With months of fuel on site and the world's largest coal reserves, the coal fleet is the nation's ace in the hole to underpin reliability and dispatchable fuel diversity.

As power demand growth laps efforts to build new generating capacity and energy infrastructure, driving up electricity prices and threatening the economy, greater utilization of what we already have in place is the clear answer.

The Industrial Energy Consumers of America (IECA) – representing manufacturers with over 12,000 facilities nationwide and more than 1.9 million employees – have already warned **“the manufacturing sector's economic growth has never before faced such a growing crisis as we are faced with today, due to inadequate natural gas pipeline capacity.”**

IECA told Congress gas supply on the East Coast is already so constrained it's all but impossible for manufacturers to consider expansion of existing operations or investment in new facilities.

Semiconductor and battery plants, and even data centers with the energy needs of cities, simply won't be built if they can't find affordable energy, leaving untold jobs and tax revenue just sitting on the table.

While reducing barriers and timelines to adding new energy infrastructure is an important piece of the answer, IECA has asked for one critical, difference-making action: **“to not prematurely shut down coal-fired electric generating units.”**

Utilities are already answering the call, cancelling planned coal plant retirements across the country from Georgia to Indiana to Utah and Wyoming. But federal action to not only preserve the fleet but make greater use of it is what is needed in this energy emergency.

Energy abundance is the key to winning today's global industrial arms race. The world is using more coal than ever

before. It is past time the U.S. recognizes its coal fleet and coal mining industry not as problems to solve but as answers to today's most pressing challenges. The coal fleet can and should underpin the administration's energy abundance agenda.



Below the deck...we're a cut above.

- Truck systems
- Side frames
- Bolsters
- Constant contact side bearings
- Couplers
- Draft sills
- Coil springs
- Center plates
- Draft gears
- Bearing adapters
- Cushioning units
 - End-of-car
 - Center-of-car
- Wheels, curved-plate, heat-treated
- Roller bearings



Amsted Rail

200 W. Monroe Street • Chicago, IL 60606 • (312) 853-5680 • amstedrail.com

SKYWARD
SPECIALTY INSURANCE

Energy

Mining Operations Insurance
is our Specialty. It's what we do best.



Specialized Coverage for the **Mining and Quarry** Industry

Skyward Specialty Energy Division offers multi-line coverage options for all types of mining operations, contractors and related operators through our wholly-owned (A-) rated insurance carriers.

Skyward Specialty Mining underwriters provide competitive terms to select agents and brokers nationwide on an admitted or surplus lines basis.

For inquiries contact:

Jim Godfrey, Executive Vice President - Head of Energy.

jgodfrey@skywardinsurance.com

W: 205.332.8118 | C: 205.936.3752

WV COAL ASSOCIATION APPLAUDS SWIFT AND DECISIVE ACTIONS BY PRESIDENT TRUMP, EPA ADMINISTRATOR ZELDIN TO ROLL BACK BIDEN-ERA COAL POLICIES



Charleston, W.Va. – The West Virginia Coal Association expressed its strong and overwhelming support for President Donald Trump and EPA Administrator Lee Zeldin's plan to roll back dozens of Biden-era regulations in a move towards revitalizing the coal industry, stabilizing grid reliability, and promoting economic growth in West Virginia and across the nation.

"We are deeply grateful to President Trump and Administrator Zeldin for their leadership in rolling back these anti-coal regulations," said Chris Hamilton, President of the West Virginia Coal Association. **"For years, our industry has faced undue pressure from excessive regulatory measures that have led to job loss and stifled industry growth and innovation. The announcement marks a crucial shift towards a more balanced approach to energy development. We believe this will not only benefit our state but also contribute to a stronger national energy policy."**

Hamilton noted that several of the items slated for deregulation, include:

- *Regulations on power plants, specifically the Clean Power Plan 2.0, that prioritized shutting down power plants while raising costs on American families.*
- *Mercury and Air Toxics Standards that improperly targeted coal-fired power plants, including a two-year compliance exemption during the rulemaking process.*
- *Limitations, guidelines and standards (ELGs) for the Steam Electric Power Generating Industry to ensure low-cost electricity while protecting water resources.*
- *Particulate Matter National Ambient Air Quality Standards (NAAQS) that shut down opportunities for American manufacturing and small businesses, including releasing guidance in the near term to increase flexibility on NAAQS implementation, reforms to New Source Review, and direction on permitting obligations.*

"The West Virginia Coal Association looks forward to working with federal and state policymakers to ensure that these regulatory changes are implemented effectively and quickly," said Hamilton.





WYOMING
ENERGY
AUTHORITY

Wyoming Energy Authority Opens Request for Proposals for Wyoming Coal Study

The Wyoming Energy Authority (WEA) is issuing a request for proposals (RFP) to conduct a comprehensive Wyoming coal resource study, including supply, demand, investment interest, current and future mining constraints, the potential for exports and infrastructure needs, and regulatory barriers and reforms needed to maintain viable long-term thermal coal market for Wyoming.

The goals of this in-depth study are as follows:

- Determine the status of Wyoming coal reserves within the Powder River Basin and Green River Basin.
- Characterise the coal demand markets for thermal coal.
- Determine capital investment interest in the construction of new coal-fired generation plants within the US market.
- Evaluate new coal leasing required to provide a stable coal supply.
- Determine what potential exists for increased coal export, review infrastructure that needs to be enhanced or built, and include time-frames for permitting and construction.
- Define key regulatory constraints to leasing, permitting, mining, burning or using, and exporting Wyoming coal resources.
- Provide recommendations to regulations and policy reform that would keep the thermal coal supply and demand markets viable.

**Airport Runways
Housing Subdivisions
Interstate Highways
State Highways
County Roads
State Parks
Parking Lots
Feedlot Pads
Pond & Lake Floors**



**Leading The Industry In Soil Stabilization
& Quick Setting Flowable Fill**



**Asphalt Pulverization • Cement • Class C Fly Ash •
Full Depth Reclamation • Lime • Flash Fill**

20011 Cty Rd 13
PO Box 1449
Fort Morgan, CO 80701
970.867-4401
www.flashfill.net
www.son-haul.com

SONFILL_{LLC}

By: Dan Maloney



From The Ashes: Coal Ash May Offer Rich Source of Rare Earth Elements

For most of history, the world got along fine without the rare earth elements. We knew they existed, we knew they weren't really all that rare, and we really didn't have much use for them — until we discovered just how useful they are and made ourselves absolutely dependent on them, to the point where not having them would literally grind the world to a halt.

This dependency has spurred a search for caches of rare earth elements in the strangest of places, from muddy sediments on the sea floor to asteroids. But there's one potential source that's much closer to home: coal ash waste. According to a study from the University of Texas Austin, the 5 gigatonnes of coal ash produced in the United States between 1950 and 2021 might contain as much as \$8.4 billion worth of REEYSc — that's the 16 lanthanide rare earth elements plus yttrium and scandium, transition metals that aren't strictly rare earths but are geologically associated with them and useful in many of the same ways.

The study finds that about 70% of this coal ash largesse could still be accessible in the landfills and ponds in which it was dumped after being used for electrical generation or other industrial processes; the remainder is locked away in materials like asphalt and concrete, where it was used as a filler. The concentration of REEYSc in ash waste depends on where the coal was mined and ranges from 264 mg/kg for Powder River coal to 431 mg/kg for coal from the Appalachian Basin. Oddly, they find that recovery rates are inversely proportional to the richness of the ash.

The study doesn't discuss any specific methods for recovery of REEYSc from coal ash at the industrial scale, but it does reference an earlier paper that mentions possible methods we've seen before in our Mining and Refining series, including physical beneficiation, which separates the desired minerals from the waste material using properties such as shape, size, or density, and hydrometallurgical methods such as acid leaching or ion exchange. The

paper also doesn't mention how these elements accumulated in the coal ash in the first place, although we assume that Carboniferous-period plants bioaccumulated the minerals before they died and started turning into coal.

Of course, this is just preliminary research, and no attempt has yet been made to commercialize rare earth extraction from coal ash. There are probably serious technical and regulatory hurdles, not least of which would be valid concerns for the environmental impacts of disturbing long-ignored ash piles. On the other hand, the study mentions "mine-mouth" power plants, where mines and generating plants were colocated as possibly the ideal place to exploit since ash was used to backfill the mine works right on the same site.

US SHOULD RESTART SHUTTERED COAL UNITS, INTERIOR SECRETARY TELLS BLOOMBERG

The United States should restart shuttered coal-fired power plants under President Donald Trump's national energy emergency declaration, Interior Secretary Doug Burgum said in a video interview with Bloomberg News.

Doing so would help the U.S. to meet rising electricity demand that is being fueled by a boom in artificial intelligence, said Burgum, who chairs Trump's National Energy Dominance Council, in the interview on the sidelines of the CERAWEEK energy conference in Houston.

"I think as part of the national energy emergency which President Trump has declared we've got to keep every plant open. And if there have been units at a coal plant that have been shut down, we need to bring those back on," he said.

At the beginning of the century coal generated more than half of U.S. power. It has now sunk to less than 20%, according to the Energy Information Administration.

Burgum said the U.S. could also keep existing plants open by



streamlining environmental regulations imposed by past administrations.

"We can stop death by regulation," he said. **"Part of that we can do by taking a close look at some of the actual legality of some of the rule-making that was perpetrated against these industries."**

The Interior Department said in an email to Reuters it was committed to **"revitalizing the coal industry through the reduction of regulatory barriers and the promotion of energy independence."**



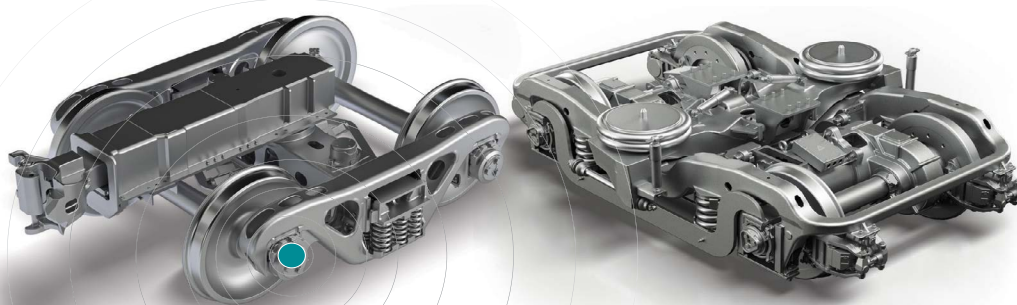
Unmatched scope of **INTEGRATED** systems

GLOBAL leaders in reliability

IoT platform drives fleet **VISIBILITY**

Performance-driven **SOLUTIONS**

A century of **INNOVATION**



TRAIN SMARTER

FREIGHT | TRANSIT | DIGITAL

amstedrail.com

Amsted Rail

By: Kevin Clark

BITCOIN MINER CLOSE TO ACQUIRING TWO PENNSYLVANIA COAL PLANTS



Canadian bitcoin mining and data center company Bitfarms Ltd. said it is close to completing the acquisition of two coal-fired power plants through its purchase of Stronghold Digital Mining, Inc.

The 85 MW Scrubgrass and 80 MW Panther Creek plants are both located in Pennsylvania.

Bitfarms first announced the planned acquisition last August. The two coal plants would power the company's bitcoin mining operations.

With the inclusion of Stronghold's assets, Bitfarms expects to expand its power capacity to 950 MW by the end of 2025, nearly doubling its North American footprint. Bitfarms said the acquisition strengthens its foothold in the U.S. electricity market, particularly within the Pennsylvania-New Jersey-Maryland Interconnection (PJM) region.

"By securing these high-potential sites and integrating power generation with digital infrastructure, we are creating long-term shareholder value and positioning Bitfarms as a leader in the digital asset and energy sectors," said Bitfarms CEO Ben Gagnon.

The purchase would also allow Bitfarms to sell power to wholesale markets in PJM territory. Concerns about power availability within PJM have grown louder after the grid operator's capacity auction last July, when electricity prices jumped over 800%. Insufficient future transmission planning, the retirement of fossil-fired generation, long interconnection queues and the implementation of FERC market reforms were all factors in the price hikes.

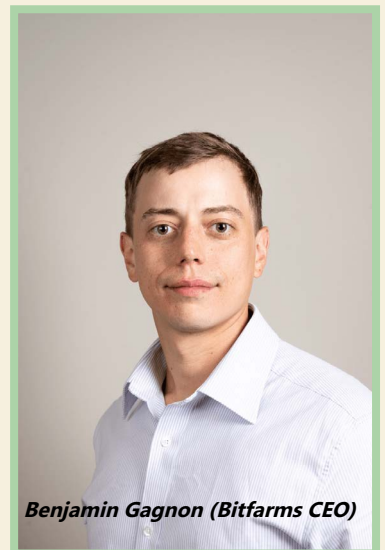
Pennsylvania Gov. Josh Shapiro recently reached an agreement with PJM over a lawsuit concerning the price increases in the 13-state territory. Shapiro filed a lawsuit against PJM with the Federal Energy Regulatory Commission (FERC) in December, claiming flaws in the grid operator's capacity auction design.

PJM itself has supported actions such as bringing capacity online more expeditiously through the interconnection queue and making sure price signals accurately reflect current supply-demand fundamentals.

PJM's next capacity auction is scheduled for July 2025.

The Bitfarms acquisition, meanwhile, is expected to close sometime in Q1 2025, pending regulatory approvals.

The purchase of the coal plants underscores a growing trend: The convergence of power generation and digital infrastructure. As companies seek greater control over energy costs and grid access, the integration of bitcoin mining or AI operations with power generation has become more of a strategy.



Benjamin Gagnon (Bitfarms CEO)



INTERIOR ADVANCES ENERGY INDEPENDENCE WITH SPRING CREEK MINE EXPANSION APPROVAL

Plan secures hundreds of good paying jobs for more than a decade in Montana

Washington, D.C. – The Department of the Interior announced the approval of a federal mining plan modification by the Office of Surface Mining Reclamation and Enforcement for the Spring Creek Mine in Big Horn County, Montana, operated by the Navajo Transitional Energy Company. This decision extends the mine's operational life by 16 years, enabling the production of approximately 39.9 million tons of federal coal and supporting 280 full-time jobs.

"The previous administration waged a full-on assault against U.S. energy," said Secretary of the Interior Doug Burgum. **"Under President Trump's leadership, we're reversing that course, unleashing American energy, and ensuring our nation's security and prosperity."**

The Spring Creek Mine supplies coal domestically to Arizona, Michigan, Minnesota and Washington, as well as internationally to Japan and South Korea. This expansion aligns with the Trump-Vance administration's agenda to reduce regulatory burdens and promote energy production, as outlined in Executive Order 14154, "Unleashing Prosperity Through Deregulation," and Interior Secretary's Order 3421, "Achieving Prosperity Through Deregulation."

"By expanding access to our nation's rich coal resources, we are not only

bolstering our economy but also reinforcing our energy independence," said Acting Assistant Secretary for Land and Minerals Management Walter Cruickshank.

OSMRE prepared an Environmental Impact Statement following a 2021 U.S. District Court for the District of Montana ruling that deemed the initial analysis inadequate. The EIS evaluates the different mining alternatives and the impacts on people and the environment.

The Department of the Interior remains steadfast in its mission to unlock America's full potential in energy production, reduce consumer costs, generate revenue to address the national deficit, and ensure that energy security remains a top priority.



FutureCoal Launches Southern Africa Chapter

FutureCoal has launched the southern Africa Chapter, with Seriti Resources Group Chief Executive Officer, Mike Teke, serving as its inaugural Chairman.



The Chapter comprises the top four African coal nations: South Africa, Mozambique, Zimbabwe, and Botswana. These nations collectively hold 150 billion t of coal reserves, placing them among the world's top coal-rich regions.

The regional initiative will build upon FutureCoal's global advocacy efforts, which champion sustainable transformation across the entire coal value chain. It will unite industry leaders, governments, and international partners to ensure consistent and clear policies and strategies which enhance the responsible and sustainable use of coal in critical sectors such as power, heavy industry, critical minerals, and hydrogen.

Mike Teal stated:

"Launching the inaugural FutureCoal Chapter in southern Africa is a testament to our unwavering commitment and leadership in uniting the value chain and reshaping coal's future regionally and internationally."

The Chapter, which already comprises 13 inaugural members from across the region, is underpinned by FutureCoal's sustainable coal stewardship (SCS). The SCS roadmap emphasises innovation and technologies that modernise the value chain to achieve mutually beneficial economic and environmental outcomes that serve both national and global ambitions.

Mike Teal stated:

"We now have a chance to follow the beat of our drum. We are nations blessed with a valuable resource, and we will be stronger together. I am calling on more of my peers across coal enterprises to publicly join this alliance that leads a pragmatic and realistic discussion on coal's inclusion."

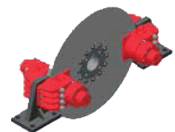
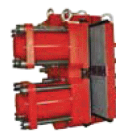
"If we are to truly support our communities and foster their prosperity, we must recognise that the responsibility lies with us to drive this transformation so that we can achieve the best for our nations and our continent."

Despite coal's crucial role in modern life, and its contribution to poverty alleviation, many remain unaware of these facts and lack an understanding of how biased policies that exclude coal can leave a nation more vulnerable or falling behind.



Michelle Manook, CEO of FutureCoal, highlighted:

"FutureCoal's SCS roadmap serves as the foundation to reverse this trend by facilitating responsible policy and investment decisions that support modernisation and transformation. The Chapter members, led by Chairman Mike Teke, are commendable for their proactive approach. Our shared goal is prosperity for all. This isn't about choosing one path over another; it's about empowering regions to chart their own course and fostering their responsible growth."



MADE IN AMERICA, BUILT FOR THE WORLD

HilliardBrakeSystems.com



Hilliard Products are
Made in the USA.

2024 MINER'S MEMORIAL

***SPECIAL THANK YOU TO OUR
CURRENT SPONSORS***

PLATINUM

Amsted Rail

K KENNAMETAL®

SILVER

**The
Baughan
Group**

**PHILLIPS
GLOBAL**
A Member of The Baughan Group

David A Moyer (63)
(1960 – 2024)
Reading Anthracite Company



David A. "Hap" Moyer, 63, of Schuylkill Haven, passed away January 29th, 2024.

He is survived by his wife, Sherry (McDonald) Moyer, as well as children, Brandon McDonald and Jessica May.

Virgil Paynter Jennings (59)
(1965 – 2024)
CM Energy Operations LP



Virgil Jennings Paynter, 59, of Lynco, WV passed away on Thursday, May 16, 2024 following an accident at work in Coal Mountain, WV. He was born on April 3, 1965 in Man, WV a son of the late Dexter and Nellie Bailey Paynter. To know him was to love him. In addition to his parents, he is preceded in death by a son Virgil Gene Paynter, a grandson Hunter Paynter, a sister Magaline Porschart, two brothers Boyd Paynter and Richard Paynter, a niece Tiffany Maynor, and his in laws Bob and Carol Copley. Survivors include his wife Sherri Renee Copley Paynter, a son Johnathon Paynter, step sons Brian Barker and Phillip Hollister, two brothers Gary (Delma) Paynter of Cyclone and Eddie (Marsha) Paynter of SC, three sisters Donna (Freddie) Lusk of Cyclone, Beverly Sue (Mark) Snodgrass of Cyclone and Jennifer (George) Bailey of

Oceana, grandchildren Ryan Barker, Sarah Barker, Cadance Hollister, Gabriel Cook, Katlyn Blankenship, Delwood Blankenship, Kyra Paynter, Levi Paynter and Jacob Paynter, and a host of other loving family and friends.

"This is truly a heartbreaking tragedy because we lost another incredible West Virginia hero," Gov. Justice said. "We should all be grateful for Mr. Paynter's service, just as we should be thankful for all the miners across our state and country. We really can't appreciate our miners enough for their work, which powers and creates steel for our homes, state, and nation. This is a tragedy beyond belief, and Cathy and I will keep this man and his loved ones in our prayers. We ask you to join us."

U.S. Senator Joe Manchin also expressed condolences.

"Gayle and I are deeply saddened to hear of the passing of Virgil Paynter at the CM Energy Operations LP Surface Mine in Wyoming County. We ask all West Virginians to join us in keeping his family, friends and loved ones in our prayers. West Virginians and Americans are forever grateful to the brave miners who put their lives at risk every day to power our nation and Virgil's sacrifices will never be forgotten. Gayle and I send our deep condolences to Virgil's wife, Sherri, and all of his loved ones as they mourn this incredible loss."

Brock Anthony "Turtle" Jackson (27) (1996 – 2024) Coronado Coal, LLC



Brock "Turtle" Anthony Jackson, age 27, of Cedar Bluff, VA, passed away on Friday, May 31, 2024.

Brock was born on September 27, 1996 in Richlands, VA and was the son of Susan Leigh Lester and her husband, Michael of Cedar Bluff, VA; and his late father, Bobby Curtis Jackson, II. He was a graduate of Anchors Academy; and was a miner of Buchanan #1. He was a lifelong resident of the Cedar Bluff area. Brock will be missed by all his loving family and friends.

In addition to his mother and stepfather, he is survived by daughters Lacey Grey Jackson & Hadley Erica-Blake Vance Jackson, fiancée Caitlin Ball, sister Tanah Ferguson, brother Bobby Curtis Jackson, III, aunt Miranda and husband, Scotty Boyd, niece Aurora Jackson, nephew Kylian Ferguson, maternal grandparents, Danny and Bonnie Ball and paternal grandparents, Bob and Barbara Jackson.

Also surviving are several family and friends.

Ashley L Cogar (33) (1990 – 2024) Pocahontas Coal Company, LLC



Ashley Lynn Cogar, 33, of Erbacon, passed away on Tuesday, July 23, 2024, at Charleston Area Medical Center after injuries she obtained in a mining accident. She was born on December 31, 1990, in Summersville, the daughter of Earl and Patricia Cogar.

Ashley was a 2010 graduate of Webster County High School. She was a rock truck driver at Wyco surface mine and formerly worked at Brooks Run Coal Company. Ashley enjoyed hunting, fishing, kayaking, drawing, vacationing, and spending

time with her children. She had a kind heart and always enjoyed helping others.

In addition to her parents, she is survived by her three children, Vivian Cogar, Dessel Cogar and Bo Carpenter all at home; brothers, James Holcomb, Jason Cogar (Brittany Long), David Cogar (Christy Hamrick), and Bobby Cogar (Taunya Massie); and many aunts, uncles, nieces and nephews.

Brian A Brotzman (44)
(1980 – 2024)
Atlantic Carbon Group, Inc.



Brian A. Brotzman, 44, of Hazleton, passed away from injuries received at his place of employment.

He was born in Wilkes-Barre, son of the late Mary Spohr.

He was employed at the Atlantic Carbon Group, Stockton Mt. Road, Hazle Twp.

He was preceded in death, in addition to his mother, by the following brothers and sisters, Clayton Spohr III, Cheryl Spohr and Steven Spohr.

He is survived by his brother and sister, Agnes Deroa, West Hazleton; Shawn Brotzman and his wife, Justine, Hazleton; and several nieces and nephews.

William Joseph Crandall (57)
(1966 – 2024)
Arch Resources, Inc.



William Joseph Crandall, 57, of Fairmont, passed away on Wednesday, August 7, 2024, at the WVU Hospitals Ruby Memorial in Morgantown due to injuries sustained in a mining accident. He was born in Fairmont, August 25, 1966, a son of Rebecca Joyce Gump Crandall, of Fairview, and the late Joseph Cecil Crandall. On October 19, 2013, he married Davina Marie Burge-Crandall who survives.

Also surviving are one daughter, Makenze Carder and her husband Steven, Fairmont; one grandson, Braxton Carder; his siblings, Joyce Crandall, Morgantown, Mike Crandall and his wife Chante, Grafton, Margaret "Maggie" Crandall, Fairview; his father-in-law, David Burge, Rivesville; brother-in-law, Mike Toothman, Barrackville, several nieces, nephews, cousins, and other extended family; and his Arch Resources-Leer Mining family. Joe was also preceded in death by his mother-in-law, Janice Burge, and a son, Jonathan David Williams.

Joe was a "Weekend Warrior" with Leer Mining where he was a motor operator. He was a 1984 graduate of North Marion High School. He could do anything and would always be there to lend a helping hand to anyone who needed it, whether he knew them or not. He was loving, caring, giving, and compassionate. Joe was a handy man and was the small engine "guru". He enjoyed playing his mandolin and his motorcycles. Joe was a man of faith and was a member of the Fairview Bethel Church.

Leonard A Barnes (62) (1962 – 2024) Arch Resources, Inc.



Leonard Allen Barnes passed away 08/11/2024 at West Elk Mine. He was 62 years old.

Leonard was born on May 28, 1962 in Knob Noster, Missouri to Ellen Irene Barnes (Woods) and Kenneth Arwood Barnes Jr. He grew up in Aspen/Basalt Colorado and graduated from Basalt High School in 1980.

He met Jean and they were married on September 20, 1980. They celebrated 43 years together.

Leonard and Jean made their way to Delta County making Hotchkiss their home for 34 years. He has been a resident of the Western Slope for 60 years. When not working he enjoyed spending time with his family, hunting, fishing, music and the great outdoors.

Leonard is survived by his beloved, devoting wife Jean of Hotchkiss; his loving daughters Amber (Chris) of Delta and Mandy (DJ) of Grand Junction; his 5 grandchildren, Adalynn, Collin, Zayne, Kaelynn and Rylee; his two brothers Scott and Kevin of Grand Junction.

Leonard is preceded in death by his parents, grandparents, and other various family members.

Leonard was an outstanding, selfless man. He was always willing to lend a helping hand and touched the lives of so many people. He was very proud of the family he created with his wife and loved to brag about them. His favorite saying was "It's the 4 of us against the world".

Gary Allen Chapman (33) (1990 – 2024) Arch Resources, Inc.



Gary Allen Chapman, 33, of South Williamson, went to be with the Lord on Sept. 6, 2024.

He was born Dec. 27, 1990, the son of Gary (Angel) Chapman and Annie (Ronald) Whetzel.

Gary was a dedicated father, husband and coal miner who worked every day to keep the wolves away.

He is preceded in death by his grandmother, Mary Daniels Blankenship, grandfather Ancie Daniels, uncles Lawrence Daniels, David Leonard Daniels and Ancie Daniels Jr., and beloved cousin, Daid Crockett Anderson.

In addition to his parents, he leaves behind his wife, Jennifer Chapman and his loving children, Danica, Baily, Jaxxon, Terry, Nicholas Jr., Alexis and Xavier. He also leaves behind his brother Jay (Emily) Chapman, niece Macey, nephew Jaden, cousin Johnny "like a brother" Anderson (Heather and children), and a host of family and friends.

Colton Wade Walls (34) (1990 – 2024) Arch Resources, Inc.



Colton Wade Walls, 34, of Bruceton Mills, WV, passed away October 5th, 2024 at JW Ruby Memorial Hospital.

Born August 25, 1990, to Marshall and Kristi (Wolfe) Walls of Albright, WV.

He was preceded in death by maternal grandmother Kathy Wolfe of Fellowsville, WV, paternal grandmother Vivian "Toots" Walls, paternal grandfather Robert Walls of Albright, WV, and sister-in-law Brieanne Dietz of Morgantown, WV.

He is survived by his wife of 10 years Jondai (Dietz) Walls; sons Carter (Bolyard), Mason, and Hudson; brother Cameron (Emily) Walls; parents Marshall and Kristi Walls; in-laws Dave (Tracey) Dietz and Bobbi (Jeff)

McElroy; and brother in laws John (Fallon) Dietz and Ben Dietz.

Colton was known by all for his work ethic and kindness, whether it was in the coal mines, working on his parents' farm, or helping out anyone who needed it. He was very smart and could fix and build almost anything. Colton had an avid love for the outdoors and enjoyed spending time in the woods and on the river. But, as much as he loved hunting and fishing, his main source of happiness came from his family. Colton loved passing baseball with Mason, driving tractor with Hudson, and camping at the river with the whole family. He was the leader of the "farm crew" when hay making season came around, was continuously plotting their next hunting strategy with Cameron, or brushing up on his cornhole game with Jondai. No matter how busy he was he always made time to get the boys to basketball or baseball practices, camps, and games. He was always there to cheer them on and coach them through it. Colton put 110% into everything he did. He was a coal miner, a farmer, a hunter, a fisherman, a baseball coach, an uncle, a son, a brother, a husband, a father, and a friend to anyone that had the pleasure to know him. He was taken from this world too soon, but his memory will live on within his sons. Colton was an organ donor and continues to help people even in death.

CURRENT NATIONAL COAL TRANSPORTATION ASSOCIATION MEMBERS

A. Stucki Company	Grand River Dam Authority	Ramaco Coal
Ameren Energy Services	High Country Railcar	RAS Data Services
American Consolidated Natural Resources, Inc.	Intermountain Power Service Corp.	Salt River Materials Group
American Electric Power	Kiewit Mining Group, Inc.	Salt River Project
Amsted Rail	L.E. Peabody & Associates, Inc.	Sandy Creek Energy Station
Arch Resources, Inc.	Levin Richmond Terminal	Slover & Loftus, LLP
Arizona Electric Power Coop. Inc.	Lexair, Inc.	Southern Company Services
Associated Electric Coop., Inc.	LG&E and KU Energy	Strato, Inc.
Associated Terminals	Lower Colorado River Authority	Tennessee Valley Authority
AVENTICS Corporation (Emerson)	Luminant Energy	Transportation Services Inc.
Basin Electric Power Cooperative	McCloskey by OPIS	TrinityRail
Blackhawk Mining	McConway & Torley, LLC	Tri-State Generation and Transmission Association
Cal Portland Cement	Mid-American Energy Company	TUCO/NexGen Services
Cathcart Rail, LLC	Midland Railway Supply	Wabtec Corporation
Cleco Corporation	Miner Enterprises Inc.	WEC Energy Group
Coal Network	Minnesota Power	Wells Fargo Rail
Colorado Springs Utilities	MinTech Enterprises, LLC	Western Fuels Association, Inc.
Consumers Energy Company	Mississippi Lime	Xcel Energy
Cooper Consolidated	Navajo Transitional Energy Company	Xcoal Energy & Resources
CPS Energy	NiSource	
Crown Carbon Reduction Technologies	Nebraska Public Power District	
Dairyland Power	New York Air Brake	
David J. Joseph Company	Oglethorpe Power Corp.	
Detroit Edison	Oklahoma Gas & Electric Co.	
Duke Energy	Omaha Public Power District	
Eco Material Technologies	Peabody Energy	
Entergy Services, Inc.	Platte River Power Authority	
Exponent	Progress Rail Services, Inc.	
GATX Rail	Railroad Financial Corporation	

CURRENT AMERICAN COAL COUNCIL MEMBERS

Coal Consumers

Ameren Missouri
American Electric Power
Blue Sky Energy
Cleco Power, LLC
Consumers Energy
Dominion Energy Fuel Services, Inc.
DTE Electric Company
Duke Energy
Entergy
JERA Global Markets North America, LLC
LafargeHolcim US Inc.
LG&E and KU Energy
Lower Colorado River Authority
MidAmerican Energy Company
NRG
Omaha Public Power District
Platte River Power Authority
Salt River Project
Sandy Creek Services, LLC
Tennessee Valley Authority
Xcel Energy

Coal Suppliers

Alliance Coal, LLC
Arch Resources
Blackhawk Mining, LLC
Bluegrass Natural Resources LLC
Central Coal Company
CONSOL Energy Inc.
Converse & Co Inc.
Glencore Ltd.
Global Coal Sales Group, LLC
Hallador Energy Company
Integrity Coal Sales, Inc.
Iron Senergy
JRL Coal
Kiewit Mining Group Inc.
Knight Hawk Coal, LLC
Lighthouse Resources Inc.
Navajo Transitional Energy Company, LLC
NexGen Coal Services, Ltd.
Peabody
PM Coal Company, LLC
Ramaco Coal, LLC
River Trading Company, LTD
Robindale Energy Services, Inc.
Usibelli Coal Mine, Inc.
Western Fuels Association
Westmoreland Mining LLC
Xcoal Energy & Resources

Contributing Supporters

American Coal Ash Association
America's Power
Armatrue Advocacy
Carbon Utilization Research Council
Coal Association of Canada
Energy Policy Network
Illinois Coal Association
International CCS Knowledge Centre
Lignite Energy Council
Montana Coal Council
National Tribal Energy Association
West Virginia Coal Association
Texas Mining Reclamation Association

Coal Support Services

Analytical & Environmental
Buchanan Ingersoll & Rooney PC
Eco Material Technologies Inc.
Gallagher Clean Energy
Hampton Roads Testing Labs., Inc.
Natural Resource Partners LP
Sampling Associates International, LLC
SGS North America Inc.
Standard Laboratories, Inc.
Veolia
Equipment & Materials
Charah Solutions, Inc.
Crown Carbon Reduction Technologies
Eco Solution Distributing
JENNMAR
Komatsu North America Mining
Liebherr USA, Co. Mining
Martin Engineering
MinTech Enterprises
Progress Rail
Trinity Industries

Finanacial, Capital & Marketing

Durham Capital Corporation

Technical & Economic Consultants

Energy Ventures Analysis, Inc.
Schneid Energy & Mining Consultants, LLC
McCloskey by Opis
John T. Boyd Company
Marshall Miller & Associates
Weir International, Inc.

Net-Negative CO2 Baseload Generation

Energy Traders

Deep Creek Resources, LLC
ITC Coal Resources International Inc. (ITO-CHU)
M Resources Pty Ltd
Visa Commodities AG

Transportation

Alleanza Rail, LLC
BNSF Railway
Canal Barge Company, Inc.
Capes Shipping Agencies
CN
Cooper Consolidated, LLC
Crounse Corporation
CSX Transportation
Donora River Terminal
Interlake Maritime Services
Norfolk Southern
Paducah & Louisville Railway
Savage Services Corp.
SCH Services, LLC
T. Parker Host
The Indiana Rail Road Company
Union Pacific Railroad
Warrenton River Terminal, LLC
Westshore Terminals Limited Partnership

CURRENT AMERICAN COAL ASH ASSOCIATION MEMBERS

Utility Members

Ameren Missouri
American Electric Power (AEP)
Arizona Electric Power Cooperative
Big Rivers Electric Corporation
Colorado Springs Utilities
Colstrip Energy Limited Partnership
Dairyland Power Cooperative
Duke Energy Corporation
FirstEnergy Corp
Great River Energy
Kansas City Board of Public Utilities
LG&E and KU Services Company
Muscatine Power & Water
Nebraska Public Power District
Southern Company
Talen Energy
Tennessee Valley Authority
WEC Business Services LLC

Non-Utility Members

Heritage Environmental Services

General Marketer Members

ASHCOR USA Inc
Charah Solutions, Inc.
Eco Material Technologies Inc.
EP Power Minerals Americas
Heidelberg Materials
Kansas City Fly Ash LLC
LafargeHolcim - Geocycle
National Minerals Corporation
Nebraska Ash
Salt River Materials Group
Separation Technologies, LLC
The SEFA Group
Waste Management

Specialty Marketer Members

Ash Grove Cement
Beneficial Reuse Management/Gypsoil
Harsco Environmental
USC Technologies

Associate Members

AECOM
AJ Transport
Allu Inc
ASH Mineral Solutions
Braun Intertec
Brixx Technologies
Burns & McDonnell
CCR Strategies & Solutions, LLC
CertainTeed Gypsum
Civil & Environmental Consultants, Inc.
Clear Water Services

ClimeCo, LLC
Commercial Liability Partners LLC
Coomtech
CRC Coating Technologies Inc.
DONROSS LLC
Dustmaster Enviro Systems
Environmental Specialties International, Inc.
FeX, LLC
Firmographs, LLC
Franklin Technical Solutions
Frontier Group of Companies
GAI Consultants, Inc.
GEI Consultants, Inc.
Georgia Pacific Gypsum LLC
Global Containment Solutions
Gradient
Griffin Dewatering
Haley & Aldrich, Inc.
Hallaton Environmental Linings
Hanson
Hive Aggregates Limited
HTH, LLC
IDA Power, LLC
John Ward Inc.
Keller
Kline Consulting
LB Industrial Systems
Lhoist North America
Loureiro Engineering Associates
M A Norden Company, LLC
Nicholson Construction Company
Nu-Rock Technology USA
NXT Innovations
Ohio Valley Cement Materials
Ozinga Bros
P. Cassels Law, PLLC
PENTA Engineering Corporation
Phillips and Jordan, Inc.
Phoenix Environmental Research
QTS Group LLC
Quikrete Companies, LLC
Ramboll
Richard Kinch
Romano Consulting Company
Saiia Construction Company, LLC
Schnabel Engineering
Seneca Engineering
Sevenson Environmental Services Inc.
SMBC Rail Services
Son-Haul, Inc.
Sonoash LLC
Stantec
Superior Belt Filter
Tarmac International
Tetra Tech
The Mouat Company

Trans Ash, Inc.
TRC
TTL, Inc
United States Gypsum Company
University of Kentucky
Vecor Technologies
Verdantas
Waste Connections, Inc.
Watershed Geo
WSP
Xylem Dewatering
Yukon Technology, Inc.

Individual Members

Daniel Benkeser
Bethany Buckland
Mohammed Dardona
Sen Du
Livingstone Dumenu
Farzaneh Elyasigorji
Jenberu Feyyisa
Brigitte Leora Hay
Sarah Hodges
Ryan Holmes
Eberechi Ichi
Dimitrios Kakaris Porter
Shinhyu Kang
Engy Khoshit
Zhipeng Li
Ifeanyi Mbah
Richard L Pepper
Sivakumar Ramanathan
Siamak Riyazi
Pravin Saraswatula
Casey Sunberg
Ross Taggart
Ying Wang
Trevor Williamson
Gang Xu

Honorary Members

Dale Baker
Claude Brown
James Burnell
Dean M. Golden
Howard Humphrey
James Merkel
Tom Pasko
Joseph Pound
Simon Prins
Jim Weeks

CURRENT ALLTRICITY NETWORK MEMBERS

Affiliated Engineers, Inc.
 Alberici Constructors
 Altec Industries, Inc.
 Alumbra LLC
 American Coal Council
 American Fire
 American Public Power Association
 Ampirical
 APTIM
 Arizona Electric Power Cooperative, Inc.
 Arizona Public Service
 Arkansas River Power Authority
 ASEC Inc.
 Asplundh Tree Expert, LLC
 Associated Electric Cooperative, Inc.
 Austin Energy
 Babcock & Wilcox Company
 Babcock Power, Inc.
 Barr Engineering Co.
 Basin Electric Power Cooperative
 Black & Veatch Corp.
 Black and McDonald
 Black Hills Corporation
 Black Hills Electric Cooperative
 Boilermakers Local #101
 Boone Electric Cooperative
 Bountiful City Light & Power
 Brooks Manufacturing Company
 Burns & McDonnell
 Butler Public Power District
 C. M. Lantana Consulting
 Carbon Power & Light, Inc.
 CDG Engineers, Inc.
 Center Electric Light & Power System
 Central Nebraska Public Power and Irrigation District
 ChemTreat
 Chimney Rock Public Power District
 City Light & Power, Inc.
 City of Alliance Electric Department
 City of Aztec Electric Department
 City of Farmington
 City of Fountain
 City of Garden City
 City of Gillette
 City of Imperial
 City of Yuma
 Collaborative Learning, Inc./Collaboration Unlimited
 Colorado Highlands Wind LLC
 Colorado Rubal Electric Association
 Colorado Springs Utilities
 Colorado State University
 Commonwealth Associates, Inc.
 Copperleaf

Core Electric Cooperative
 CPS Energy
 D. C. Langley Energy Consulting, LLC
 Delta Montrose Electric Assn.
 Durr Universal, Inc.
 El Paso Electric Company
 Electrical Consultants, Inc.
 ElectroTech, Inc.
 Emerson
 The Empire District Electric Company
 Empire Electric Association, Inc.
 Energy Executive Course University of Idaho
 Energy Providers Coalition for Education (EPCE)
 Engineering, Procurement & Construction, LLC
 ESC engineering An EN Engineering Company
 Estes Park Power & Communications
 Evans, Lipka and Associates, Inc.
 Evapco Dry Cooling, Inc.
 Energy, Inc.
 Exponential Engineering Company
 FlexGen
 Forbes Bros Group of Companies
 Fort Collins Utilities
 Fugro
 Gamber-Johnson LLC
 Gannett Fleming Inc.
 GE Gas Power
 General Grid Services
 Grand Island Utilities
 Great Plains Safety and Health Organization
 Great Southwestern Construction, Inc.
 Hartigan Power Equipment Company
 HDR
 Highline Electric Assn.
 Holy Cross Energy
 Hubbell Power System
 Hughes Brothers, Inc.
 IBEW, Local Union 111
 IEC Rocky Mountain
 IMCORP
 Incorporated County of Los Alamos Department of Public Utilities
 Interstate Electrical Contractors, Inc.
 Irby
 James Industries, Inc.
 Kansas City Board of Public Utilities
 KD Johnson, Inc.
 Kiewit

Kit Carson Electric Cooperative
 KnowledgeVine, LLC
 La Junta Municipal Utilities
 La Plata Electric Association, Inc.
 Lamar Utilities Board
 Lamons
 Las Animas Municipal Light & Power
 Lewis Associates, Inc.
 Liberty Industrial Group Inc.
 Lincoln Electric System
 LiveEO, Inc.
 Longmont Power & Communications
 Loup River Public Power District
 Loveland Water & Power
 Lower Colorado River Authority
 M&S Engineering;
 MasTec Clean Energy & Infrastructure

CURRENT ALLTRICITY NETWORK MEMBERS

Merrick & Company	RS Electric Utility Services	Wheat Belt Public Power District
Missouri River Energy Services	S&B Engineers and Constructors	Wheatland Electric Cooperative
Mitsubishi Power Americas, Inc.	S&C Electric Company	Wheatland Rural Electric Assn.
Morgan County Rural Electric Assn.	Safety One Training International, Inc.	Wheeler Power Systems
Mosaic	San Isabel Electric Association, Inc.	White River Electric Assn., Inc.
Mountain Parks Electric, Inc.	San Miguel Power Assn.	Wilson & Company, Engineers & Architects
Mountain View Electric Association, Inc.	Sangre De Cristo Electric Assn.	WSU Energy Systems Innovation Center
Mycoff Fry Partners LLC	Sargent & Lundy	Xcel Energy
National Powerline LLC	Savage	Y-W Electric Association, Inc.
National Renewable Solutions	Schweitzer Engineering Laboratories	Zachry Group
Navopache Electric Cooperative, Inc.	SeeKing HR	
Nebraska Public Power District	Sellon Forensics Inc.	
NEI Electric Power Engineering, Inc.	Shannon Communications Group	
NextEra Energy Resources	Shermco Industries	
NFront Consulting LLC	Siemens Energy Inc.	
Nooter/Eriksen, Inc.	SMTX Utilities	
Norris Public Power District	Solomon Associates	
Northeast Community College	South Central PPD	
Northeast Nebraska Public Power District	Southeast Colorado Power Assn.	
Northwest Rural Public Power District	Southeast Community College	
Olsson	Southern Pioneer Electric Company	
Omaha Public Power District	Southwest Public Power District	
Onward Energy	Southwire Company	
Osmose Utilities Services, Inc.	Springville City Power	
PacifiCorp	SPR	
Panhandle Rural Electric Membership Assn.	Stanley Consultants, Inc.	
PAR Electrical Contractors, LLC	Sturgeon Electric Co., Inc.	
PAR Western Line Contractors, LLC	Sulphur Springs Valley Electric Cooperative	
Peak Utility Services Group	Sunflower Electric Power Corporation	
Pedernales Electric Cooperative	Taber International, LLC	
Peterson Company	Technically Speaking, Inc.	
Pike Engineering	Tenaska Marketing Ventures	
Pinyon Environmental, Inc.	TG Advisers, Inc.	
Pioneer Electric Cooperative, Inc.	Towill, Inc.	
Pipefitters Local Unio #208	Tri-State Generation and Transmission Assn.	
Platte River Power Authority	Ulteig Engineers, Inc.	
PNM Resources	United Engineers & Constructors, Inc.	
Poudre Valley Rural Electric Assn.	United Power, Inc.	
Power Contracting, LLC	UNS Energy Corporation	
POWER Engineers, Inc.	Utility Telecom Consulting Group, Inc.	
Power Equipment Specialists, Inc.	Verve Industrial Protection	
Power Pole Inspections	Wartsila North America, Inc.	
PRE, Inc.	Webster Associates	
Preferred Sales Agency, Ltd	West Peak Energy, LLC	
Primary Energy	Western Area Power Administration	
PSM (Power System Mfg., LLC)	Western Line Constructors Chapter, Inc.	
Quanta Services	NECA	
	Westwood Professional Services	



Good for Economics, Engines, and the Environment

Upgrade your diesel to premium diesel performance with Crown CRT® Fuel Borne Catalysts. Our data-driven demonstration strategy will show:

- 6-9% fuel efficiency improvement
- 6-9% carbon/CO₂e emissions reduction
- 30-40% reduced engine oil soot
- 10-25% improved lubricity protects injectors
- Typically greater than 2:1 return on expense!

Crown's CRT Catalysts are differentiated from normal fuel additives because of the patented fuel borne catalyst technology. This suspended particle promotes cleaner combustion earlier during the power stroke - think of it as advancing the timing of your diesel engine.

The catalysts are safe for use in all diesel engines and are easy to deploy with our proven on-location dosing system.

Contact us to discuss and determine if a CRT Demonstration is right for your operation.



Nick Simmons

VP Performance Chemicals Group
nsimmons@Crown-CRT.com
(303) 748-1980

Arthur Brown

VP Technical Services
abrown@Crown-CRT.com
(970) 903-9199



www.Crown-CRT.com

TRUMP'S SUPPORT OF THE COAL INDUSTRY WILL KEEP ENERGY COSTS LOW, BENEFIT ECONOMY, EXPERTS SAY

Experts say that after 15 years of decline the Trump administration's active support of the coal industry will bring down energy costs, improve grid reliability and ensure the U.S.' competitiveness.

By: Kevin Killough

President Donald Trump posted a blunt and enthusiastic statement of his support for building more coal-fired power plants.

"After years of being held captive by Environmental Extremists, Lunatics, Radicals, and Thugs, allowing other Countries, in particular China, to gain tremendous Economic advantage over us by opening up hundreds of all Coal Fire Power Plants, I am authorizing my Administration to immediately begin producing Energy with BEAUTIFUL, CLEAN COAL," the president said in a post on Truth Social.

The president didn't offer any details on the authorization itself, but it follows more concrete actions that Environmental Protection Agency Administrator Lee Zeldin is taking to review regulatory rules and end what Zeldin called the Biden administration's "Green New Scam."

Many of these rules being reconsidered under the Trump administration are those that have impacted coal-fired power plants, including Biden's Clean Power Plan 2.0, particulate matter standards, Mercury and Air Toxics Standards, the endangerment finding, and the "Good Neighbor Plan." Likewise, Trump's day-one executive order, "Unleashing American Energy," included coal in the energy types the order was supporting.

"We see such an incredible opportunity for the industry, and that's what we had hoped with the change in administration," Emily Arthun, chief executive of the American Coal Council, told Just the News.

The industry's decline, from Obama to Biden

The use of coal for electricity generation in the U.S. has been on the decline since it peaked out at 1,847 terawatt hours produced in 2010 — enough to power more than 171 million households. Prior to announcing his candidacy in February 2008, Barack Obama, then an Illinois U.S. senator, spoke of his opposition to America's coal industry.

"So, if somebody wants to build a coal plant, they can — it's just that it will bankrupt them, because they are going to be charged a huge sum for all that greenhouse gas that's being emitted," Obama told the San Francisco Chronicle in January 2008. By the end of Obama's second term in 2016, total U.S. electricity generation from coal was down to 1,239 terawatt hours.





The decline continued through the first Trump administration. At the time, advancements in drilling and well completion technologies, also called fracking, unleashed cheap natural gas onto the American market. This allowed gas to be competitive and displace a lot of electricity generation from coal.

Throughout his presidency, former President Joe Biden continued to wage war on the coal industry, and in his last days he halted new leases in the coal-producing region of the Powder River Basin, which straddles northeast Wyoming and part of Montana.

Last year, electrical generation from coal produced 675 terawatt hours — enough to power 62.5 million homes. In 2022, Wyoming produced 41.2% of the nation's coal, virtually all of which is the type of coal used in electricity production. For a state whose economy is heavily dependent on coal, the Trump administration's support is welcome.

"We're optimistic. We're seeing some moves out in Washington, D.C., at the regulatory level and at the congressional level to try to get back to a little common sense. And it's great that the president of the United States is actually working for us instead of actively working against us," Travis Deti, executive director of the Wyoming Mining Association, told Just the News.

Stressed electrical grid

The Biden administration had hoped that wind and solar would just replace power from coal — and later power from natural gas. In 2023, wind and solar produced 663.35 terawatt hours of electricity, up from nearly 96 terawatt hours in 2010.

Homes consume power at different rates at different times of the day, so it's difficult to say how many homes any amount

of electricity from intermittent wind and solar would power, since it would depend on what time of day the power was delivered. Ultimately, without some form of backup, wind and solar can't fully supply power to homes. Baseload power producing 663.35 terawatt hours of electricity would power nearly 62 million homes.

Since wind and solar are intermittent, they also don't provide adequate replacement for retired coal-fired power. As the grid became more loaded with intermittent sources while coal plants retired over the past several years, annual reports from the North American Electric Reliability Corporation, the continent's grid watchdog, began to show increasing risks of blackouts during periods of high demand, which are typically periods of inclement weather.

Electricity demand in the United States has been essentially flat for the past 20 years, which helped mitigate the problem, but that's expected to change as the demands of A.I. and electric vehicles place more loads on the grid. The American Coal Council's Arthun said the Trump administration's actions to support coal is not just good for the industry. It's good for energy consumers.

"Our grids are stressed with the retirements of the coal fleet — the ones that have retired and the pending retirements. We knew that the grid was at a critical state, and now we have the administration coming in and saying, 'Whoa, we need to stop and look at this. Our coal baseload power needs to be there,'" Arthun said.

Economic impact

Biden's Clean Power Plan would have not only forced more retirements of coal-fired power plants, but it would have also discouraged the building of natural-gas

fired power plants. Analyses showed that blackouts and rising energy costs were likely outcomes in the near future if the rule remained in force.

While the U.S. was retiring coal plants to bring down greenhouse gas emissions, China built more coal-fired capacity than the U.S. retired, and this effectively offset any reductions in emissions the U.S. accomplished. Rising electricity prices can harm industries and drag down economies. That's happening in Europe where climate policies were pursued much more aggressively than here in the U.S.

Arthun said that Trump is setting the U.S. on a course that will prevent the country from being further disadvantaged economically by the retirement of coal plants. This is not just good for the coal industry, she said, it's good for the nation.

"We need to win the race in AI. We cannot allow that to go to China. But if we don't have the power to do that, then we can't compete," Arthun said. **"This is protecting the country fundamentally, and the well being of our citizens and our economy."**

EVENTS

NCTA (NATIONAL COAL TRANSPORTATION ASSOCIATION)

May 19 – 22, 2025

NCTA 2025 Spring and Operations & Maintenance Conferences

InterContinental San Antonio Riverwalk
111 E Pecan St,
San Antonio, TX 78205

ASRS (AMERICAN SOCIETY OF RECLAMATION SCIENCES)

May 13, 2025

Poster Prep/Help Session for Students

Webinar

June 1 – 5, 2025

2025 Meeting Butte, MT

ACAA (AMERICAN COAL ASH ASSOCIATION)

October 7 – 9, 2025

ACAA Fall Membership Meeting & Workshop

Salt Lake City Marriott City Center
220 S State St.
Salt Lake City, UT 84111

ACC (AMERICAN COAL COUNCIL)

May 5 – 8, 2025

Inaugural Washington Fly-In

ALLTRICITY NETWORK

May 21 – 23, 2025

2025 Safety Conference

SRP's PERA Club
1 E Continental Dr
Tempe, AZ 85281

June 17 – 18, 2025

Lifecycle Management Conference: PowerGen Fleets & Facilities

Burns & McDonnell's
9191 Jamaica St.
Englewood, CO 80112

June 24, 2025

2025 Alltricity Scholarship Foundation Golf Tournament

Arrowhead Golf Club
10850 Sundown Trail,
Littleton, CO 80125

June 25 – 26, 2025

2025 Transmission, Substation & Power Delivery Projects Conference

Tri-State Generation & Transmission Association
1100 W 116th Ave,
Westminster, CO 80234

July 22 – 23, 2025

DER Distribution Engineering Workshop

The Xcel Energy Kipling Service Center
10001 W. Hampden Ave,
Lakewood, CO 80227

August 21, 2025

August 2025 Safety Roundtable

The TIC Training Center
2551 North Picadilly Road,
Aurora, CO 80019

September 29 – October 1, 2025

2025 Alltricity Network Fall Convention

Loews Kansas City Hotel
1515 Wyandotte St
Kansas City, MO 64108

October 16, 2025

PLANNING SESSION: 2026 Alltricity Network Spring Conference

In-person location TBA + virtual attendance option via Teams

November 4, 2025

November 2025 Safety Roundtable

Every Cedar Point Training Facility
10056 Raytown Road,
Kansas City, MO 64134

November 13, 2025

PLANNING SESSION: 2026 Alltricity Network Fall Convention

In-person location TBA + virtual attendance option via Teams

September 14 – 16, 2026

2026 Alltricity Network Fall Convention

Hyatt Regency Hill Country Resort & Spa
9800 Hyatt Resort Dr,
San Antonio, TX 78251

TO SUBMIT MORE EVENTS FOR PUBLISH OR TO INCLUDE INFORMATION ABOUT YOUR ORGANIZATIONS CALENDAR OF EVENTS, PLEASE EMAIL INFO@MARTONICKPUBLICATIONS.COM. THANK YOU.

UPCOMING ISSUE

UPDATED MEMBER DIRECTORIES

WORLD NEWS

MARKET TRENDS



INDEX TO ADVERTISERS

Amsted Rail

07-12-OBC

www.amstedrail.com

Crown-CRT

28

www.crown-crt.com

Skyward Specialty Insurance

08

www.skywardinsurance.com

Son Haul, Inc.

10

www.son-haul.com

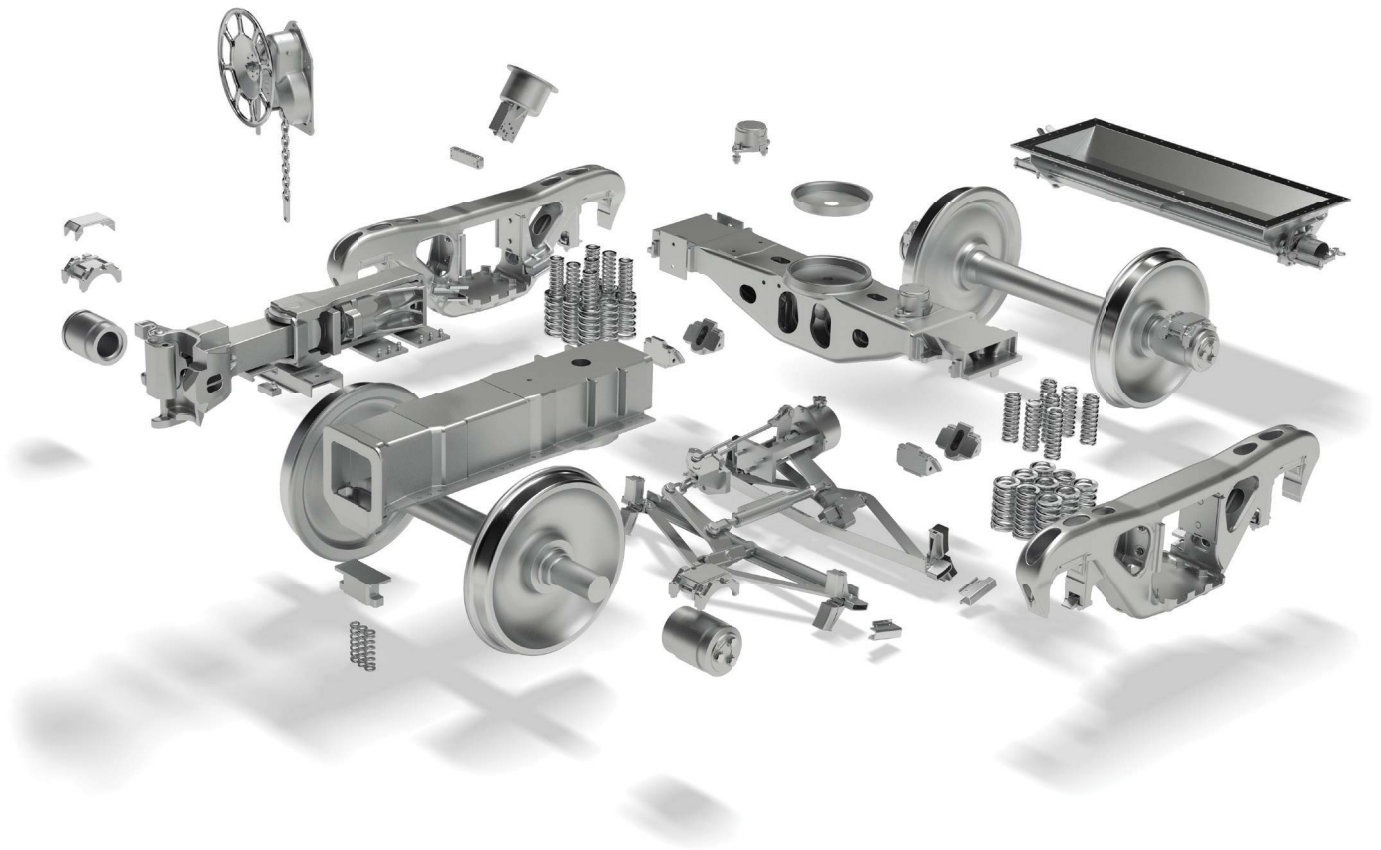
The Hilliard Corporation

16

www.hilliardcorp.com

MORE THAN PARTS. PERFORMANCE.

Amsted Rail, the global leader in fully integrated freight car systems for the heavy haul rail market.



TRAIN SMARTER

FREIGHT | TRANSIT | DIGITAL

Amsted Rail[®]

amstedrail.com