

**Q2, 2024**

# — Coal Energy —

FROM THE MINE TO THE UTILITY

## **MINEXPO 2024**

**COAL PROVES HARD TO DISLODGE FROM  
US POWER SYSTEM**

**BROOKWOOD-SAGO GRANTS**



# TABLE OF CONTENTS

Feature:



19

COAL PROVES HARD  
TO DISLodge FROM US  
POWER SYSTEM

World News:



18

GLOBAL COAL DEMAND  
IS SET TO REMAIN  
BROADLY FLAT  
THROUGH 2025

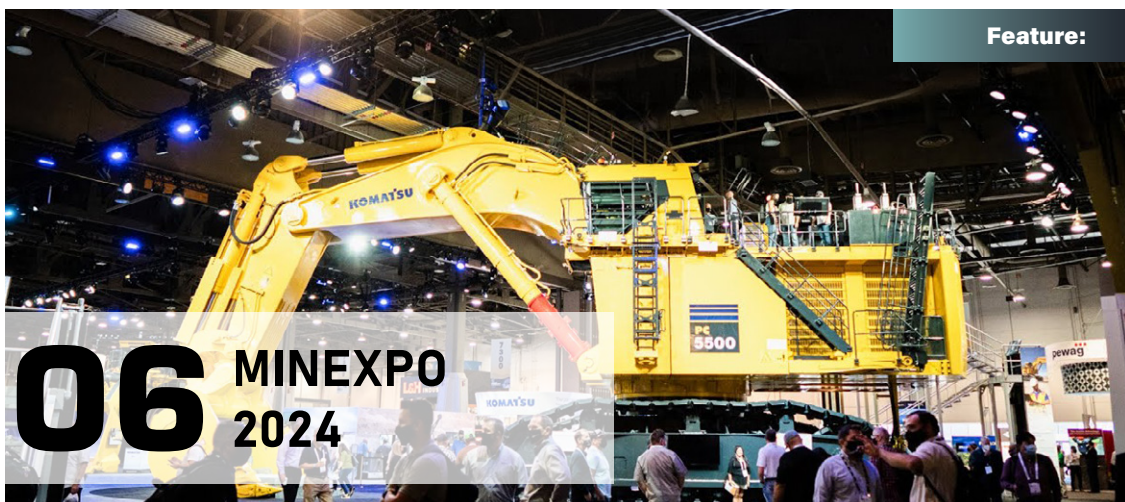
Feature:



27

US DEPARTMENT OF LABOR  
ANNOUNCES UP TO \$1M IN  
BROOKWOOD-SAGO GRANTS  
AVAILABLE TO PROMOTE MINE  
SAFETY, HEALTH EDUCATION;  
TRAINING

Feature:



06

MINEXPO  
2024

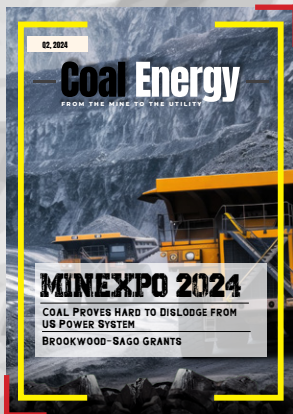
## IN EVERY ISSUE:

- 03 Letter From The Publisher
- 04 Association Comparisons
- 09 In the Press
- 21 Association Members
- 28 Industry Events
- 29 Upcoming Issue
- 29 Index to Advertisers





# LETTER FROM THE PUBLISHER



Dear Readers,

We are excited to bring you Issue 2 of **Coal Energy** for 2024! As always, we strive to provide you with insightful articles and the latest developments in the coal industry. This quarter, we are proud to showcase a range of features that reflect the dynamic nature of our field.

Our first feature highlights MINEXPO 2024, taking place from September 24 to 26 in Las Vegas, Nevada. This premier event is an exceptional opportunity for industry professionals to gather and

explore the latest advancements in mining equipment and technology. We encourage you to attend and engage with fellow stakeholders as we drive the future of mining forward.

In our second feature, we delve into the complexities of coal's continued role within the U.S. power system. Despite the growing push for alternative energy sources, coal remains a significant player. We explore the factors contributing to its resilience and discuss the implications for our energy landscape.

Our third feature covers an important initiative by the U.S. Department of Labor—the Brookwood-Sago grants. These grants are designed to promote mine safety, health education, and training, emphasizing our industry's commitment to the well-being of its workforce. This funding opportunity is crucial for ensuring that safety standards are not just met but exceeded across the board.

We are proud to note that our readership includes members of the nation's largest coal-related associations. Your engagement and commitment are vital to the continued strength and evolution of our industry.

A heartfelt thank you to our advertisers for their support, which allows us to deliver high-quality content to you. We also want to express our gratitude to you, our readers, for making this publication possible. Your interest and participation in the coal sector inspire us to keep exploring and reporting on the issues that matter most to you.

Thank you for your continued support, and we hope you enjoy this issue as much as we enjoyed putting it together.

Sincerely,

Maria Martonick

President

Martonick Publications, Inc.

800-507-6896



## Published & Produced By:

Martonick Publications, Inc.  
PO Box 244322  
Boynton Beach, FL 33424

Toll Free Phone: (866) 387-0967  
Toll Free Fax: (866) 458-6557

info@martonickpublications.com  
www.coalenergyonline.com

**President:**  
Maria Martonick

**Vice President:**  
Jenna Lynn

**Managing Editor:**  
A.J. Raleigh

**Research Coordinator:**  
Vivian Mofeed

**Contributing Writers:**  
Maria Martonick, Chris Hamilton,  
Estrella Vil, Elena Anwar, Gavin  
Maguire, Will Owen.

**Graphic Designer:**  
Abdalla Mansour

*COAL ENERGY IS INDEPENDENTLY PUBLISHED, AND IS NEITHER AFFILIATED WITH OR ENDORSES ANY INDIVIDUAL ASSOCIATION.*

THE OPINIONS EXPRESSED BY THE AUTHORS OF THE ARTICLES CONTAINED IN COAL ENERGY ARE THOSE OF THE RESPECTIVE AUTHORS, AND DO NOT NECESSARILY REPRESENT THE OPINION OF THE PUBLISHER.

© COPYRIGHT 2024



# Association Comparisons



[www.nma.org](http://www.nma.org)

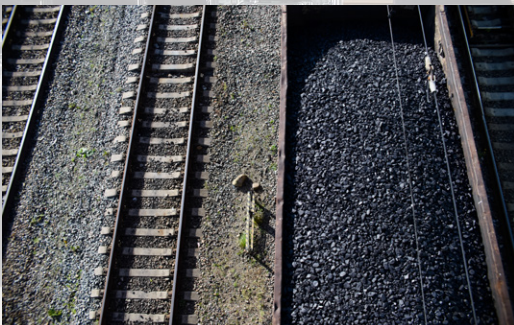
## NATIONAL MINING ASSOCIATION (NMA)

### Mission:

The NMA's mission is to build support for public policies that will help Americans fully and responsibly benefit from our abundant natural resources. Our objective is to engage in and influence the public process on the most significant and timely issues that impact mining's ability to safely and sustainably locate, permit, mine, transport and utilize the nation's vast resources.

### NMA SERVES ITS MEMBERSHIP BY:

- Promoting the safe production and use of coal and mineral resources
- Establishing a strong political presence in the Nation's Capital
- Serving as the information center for and a single voice of U.S. mining
- Addressing the current and future policy needs of U.S. mining, mining equipment manufacturers and support for services members of NMA



[www.movecoal.org](http://www.movecoal.org)

## NATIONAL COAL TRANSPORTATION ASSOCIATION (NCTA)

### Mission:

The mission of the NCTA is to provide education and facilitation for the resolution of coal transportation issues in order to serve the needs of the general public, industry, and all modes of transportation. This is accomplished through the sponsoring of educational fora and providing opportunities for the lawful exchange of ideas and knowledge with all elements of the coal transportation infrastructure.



[www.asrs.us](http://www.asrs.us)

## AMERICAN SOCIETY OF RECLAMATION SCIENCES (ASRS)

### Mission:

ASRS's mission is to represent and serve a diverse international community of scientists, practitioners, private industry, technicians, educators, planners, and government regulators involved in mineral extraction and disturbed ecosystem reclamation.

ASRS promotes the advancement of basic and applied reclamation science through research and technology transfer in the Society's annual meetings, workshops, published proceedings, newsletters, Reclamation Matters publication, Reclamation Sciences, and the ASRS website.





[www.acaa-usa.org](http://www.acaa-usa.org)

## AMERICAN COAL ASH ASSOCIATION (ACAA)

### Mission:

The ACAA advances the management and use of coal combustion products in ways that are environmentally responsible, technically sound, commercially competitive and more supportive of a sustainable global community.



[www.americancoalcouncil.org/](http://www.americancoalcouncil.org/)

## AMERICAN COAL COUNCIL (ACC)

### Mission:

American Coal Council (ACC) provides relevant educational programs, market intelligence, advocacy support and peer-to-peer networking forums to advance members' commercial and professional development interests.

ACC represents the collective interests of the American coal industry in advocating for coal as an economic, abundant and environmentally sound critical resource.

ACC serves as an essential resource for industry, policy makers and public interest groups. The Association supports activities and objectives that advance coal supply, consumption, transportation and trading.



[www.futurecoal.org](http://www.futurecoal.org)

## FUTURECOAL

FutureCoal represents industry leaders, committed to building a sustainable future for global coal.



[www.alltricitynetwork.org](http://www.alltricitynetwork.org)

## ALLTRICITY NETWORK

### Mission:

This short statement outlines the association's identity and business activities. The Mission Statement was modified to more clearly emphasize what the organization is, why it exists and who we serve:

**Preparing the electric energy industry for the future through education and networking.**

Since 1903, Alltricity Network has been an association by members, for members. Employees from member companies drive program content by serving on the association committees, presenting at events, writing in Alltricity Network's publications and providing feedback to the staff. Members also advocate for Alltricity Network, and the association sees growth because of the outstanding word-of-mouth promotion by members. When a member brings their colleague to an Alltricity Network event, that person experiences what the association is all about and leaves with an appreciation for the content and the trusted community of sharing. Electric energy professionals know they can get answers from Alltricity Network because of the knowledge and friendliness of the members. By working together through the association, they are driving their industry forward.




**MINEXPO**  
INTERNATIONAL®


# MINEXPO 2024

September 24 – 26, 2024

LAS VEGAS, NEVADA, USA

## THE GLOBAL MINING INDUSTRY GATHERS HERE

**MINExpo** is your place to see all of the latest mining equipment and technology in person. With a sole focus on mining, this event does what others can't — it shows you where the industry is headed and delivers ideas and solutions you can use right away. Whether you're looking for new ways to lower costs, increase profitability, improve safety or manage risk, you'll find what you need to achieve your operational goals here, at the world's largest mining show.

## THIS IS WHERE YOU'LL BE IN YOUR ELEMENT.

**MINExpo**, owned and produced by the National Mining Association, brings professionals, experts and decision-makers from the global mining industry together to collaborate, learn and engage. The show floor will feature mining products for safety, drilling, engineering, materials handling, training & HR and much more.

Our attendees and exhibitors specialize in these industry sectors:

- Precious metals
- Nonferrous metals
- Ferrous metals
- Coal
- Industrial minerals
- Iron ore mining & quarrying
- Sand & gravel

## DISCOVER THE LATEST EQUIPMENT AND TECHNOLOGY.

You go to great depths to provide the materials required to build, run and power the modern world. At MINExpo INTERNATIONAL®, the industry's largest global mining event, you will uncover new products and transformative technology that can help you increase productivity and safety.

Massive machinery. Innovative solutions. Essential resources. Every element from exploration, planning and processing to safety, sustainability and reclamation is here.

## WHY ATTEND?

### IF IT'S MINING, IT'S HERE.

Only MINExpo, the world's largest mining event, connects you with the full range of innovations that are transforming the way your work gets done. With a focus on all things mining (and only mining), this event delivers what others can't — a chance to glimpse the future of your industry and find exactly what your operation needs now. And with access to technical staff that can answer your questions in real time, you'll get the information you need to make smart purchasing decisions.

Whether you're involved in site development or processing and preparation, this is where you can:

- Explore cutting-edge technology, including sensors, AI and robotics
- Purchase equipment, parts and services from a global network of suppliers and manufacturers
- Share ideas with people facing the same operational issues
- Get ahead of industry trends and changes that impact your day-to-day



# MINEXPO SPEAKER SERIES

This year's star-studded speaker series features leaders who will share their unique perspectives, experiences and secrets for success. ALL ACCESS and EXPO PLUS registration categories get you access to these inspiring presentations. Choose your registration type now so you're ready when registration opens. Seating is limited.

## SPEAKERS



**Mike Rowe**

Writer, narrator, producer, recording artist, Emmy-Award winning TV Host, New York Times Best Selling author, and the CEO of the mikeroweWORKS Foundation.



**Dr. Kelly Monahan**

Managing Director of the Future of Work Research Institute, Upwork; former Director of Future of Work, Meta; Organizational Behaviorist.



**Danica Patrick**

Former Professional Racecar Driver.



**Jon Dorenbos**

Magician, Motivational and Keynote Speaker, Former NFL Player.



**Kevin O'Leary**

Top Business Speaker, Respected Investor, Author, Venture Capitalist, and Judge on ABC's Shark Tank and CNBC's Money Court Reality Show.





MADE IN AMERICA, BUILT FOR THE WORLD

[HilliardBrakeSystems.com](http://HilliardBrakeSystems.com)



Hilliard Products are  
Made in the USA.





## THE WORLD'S LARGEST MINING SHOW IS NEXT MONTH NMA HIGHLIGHTS WAYS TO BE INVOLVED

**W**ASHINGTON, D.C. – The National Mining Association (NMA), the owner and producer of MINExpo INTERNATIONAL® 2024, the world's largest mining show of its kind, announced that passes for next month's show (September 24-26 in Las Vegas) are still available and the NMA will for the first time be live-streaming from the show on NMA TV.



**"There is no time in mining's history that has been more significant than this moment right now,"** said Rich Nolan, NMA president and CEO. **"Whether it's energy security or national security, supply chains or electric vehicles, or even manufacturing and infrastructure, it all comes back to mining and the products of mining. For those who are there, seeing the best our industry has to offer is an unparalleled experience but we understand not everyone can attend in person; this year, for the first time, we'll be streaming live on NMA TV."**

**MINEXPO**  
INTERNATIONAL

**2024** | SEPTEMBER 24-26, 2024  
LAS VEGAS, NEVADA, USA

### About MINExpo INTERNATIONAL®

*Held every four years, MINExpo is the world's largest and most comprehensive global mining event, bringing together worldwide industry leaders who are looking to purchase the latest equipment and services, explore innovative new technologies, meet face-to-face with suppliers and make valuable new connections. MINExpo covers the entire industry—including exploration, mine development, open pit, underground mining, processing, safety, environmental improvement and more.*

### About NMA TV

*Can't make it to Las Vegas for the world's largest mining show but want to be involved? This year, the NMA is bringing the dynamic action that takes place inside the Las Vegas Convention Center to the rest of the world. Through NMA TV, we will be broadcasting live from the show floor, highlighting the cutting-edge equipment and innovative technologies only seen at MINExpo, featuring groundbreaking programming from exhibitors, and interviewing leaders in mining throughout the show.*



# "FRIENDS OF COAL" APP LAUNCH

**W**ashington D.C. – The American Coal Council in partnership with America's Coal Associations announce the launch of the "Friends of Coal" app, an interactive and educational portal designed to equip users with a direct link to current information and issues impacting our nation's coal industry.

"We encourage all friends of coal, across the country, to download the new Friends of Coal app, it's a wonderful tool for coal supporters to communicate and engage on issues important to the mining industry and our local economies."

The app, which was designed by South Charleston, W.Va.-based internet firm Bricks Without Straw, offers users access to industry

information, social feeds, action alerts and more. Additionally, those interested in ordering the popular Friends of Coal sticker, can order them through the app.

The Friends of Coal is a volunteer organization that consists of tens of thousands of citizens across the country. Membership is free and the level of involvement by members is at their own discretion.

The Friends of Coal is dedicated to informing and educating citizens about the coal industry and its vital role in our country's future. The organization's goal is to provide a united voice for an industry that has been and remains a critical national and global economic contributor.



**The app is available for download on Android and Apple products at the following links:**

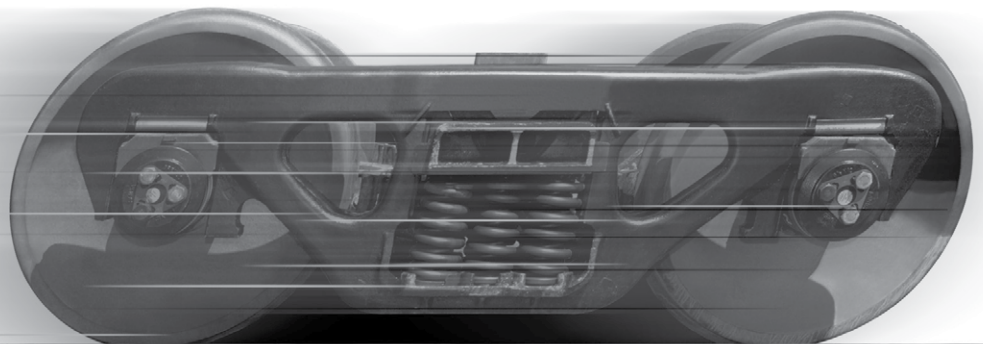
Android: <https://play.google.com/store/apps/details?id=com.bws.foc>

iOS: <https://apps.apple.com/us/app/friends-of-coal/id6477393501>



## Below the deck...we're a cut above.

- Truck systems
- Side frames
- Bolsters
- Constant contact side bearings
- Couplers
- Draft sills
- Coil springs
- Center plates
- Draft gears
- Bearing adapters
- Cushioning units
  - End-of-car
  - Center-of-car
- Wheels, curved-plate, heat-treated
- Roller bearings



**Amsted Rail**

200 W. Monroe Street • Chicago, IL 60606 • (312) 853-5680 • amstedrail.com



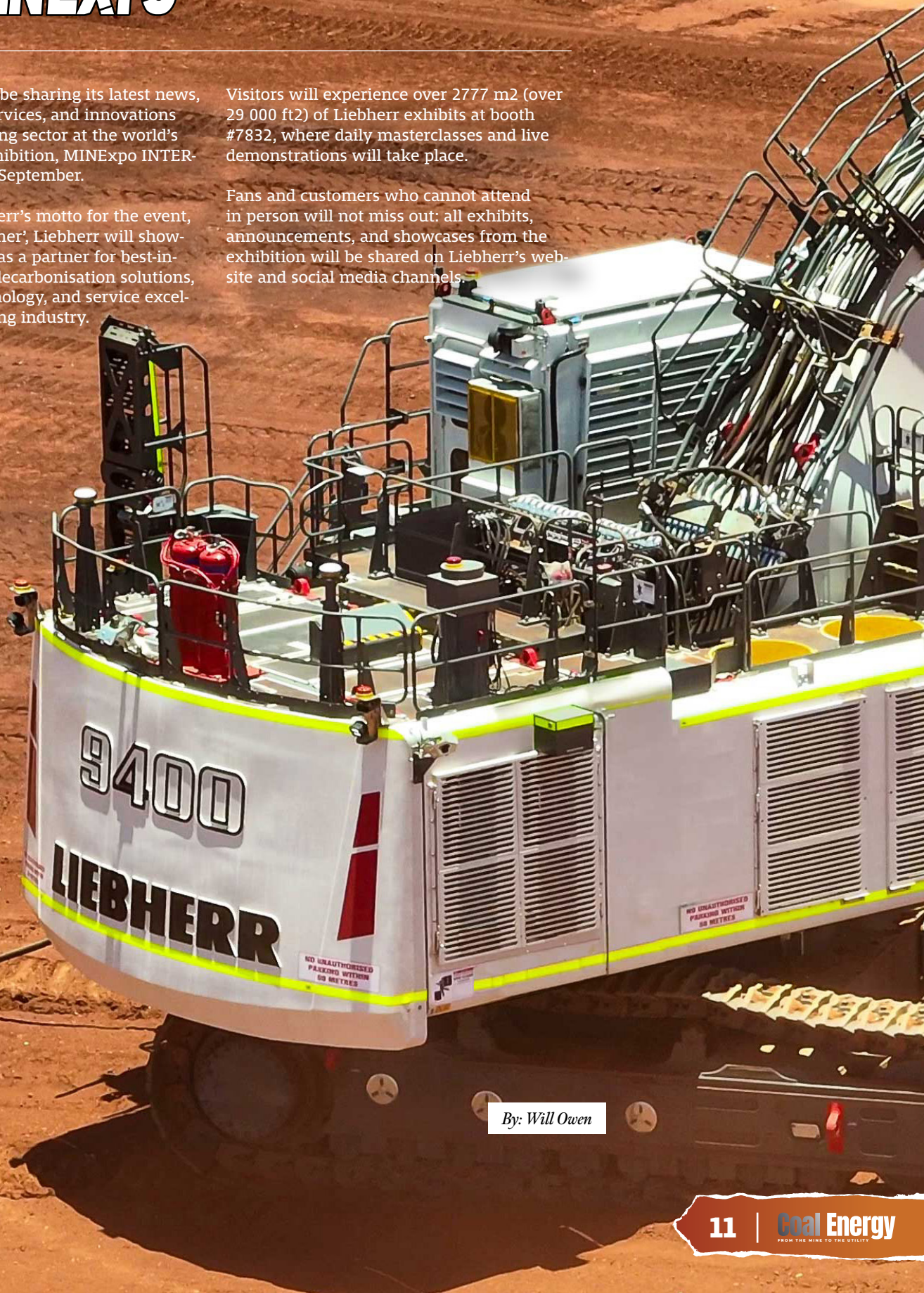
# LIEBHERR TO PRESENT ITS NEW MINING SOLUTIONS AT MINEXPO

**L**iebherr will be sharing its latest news, products, services, and innovations for the mining sector at the world's largest mining exhibition, MINExpo INTERNATIONAL®, this September.

In line with Liebherr's motto for the event, 'Your mining partner', Liebherr will showcase its reliability as a partner for best-in-class equipment, decarbonisation solutions, cutting-edge technology, and service excellence for the mining industry.

Visitors will experience over 2777 m<sup>2</sup> (over 29 000 ft<sup>2</sup>) of Liebherr exhibits at booth #7832, where daily masterclasses and live demonstrations will take place.

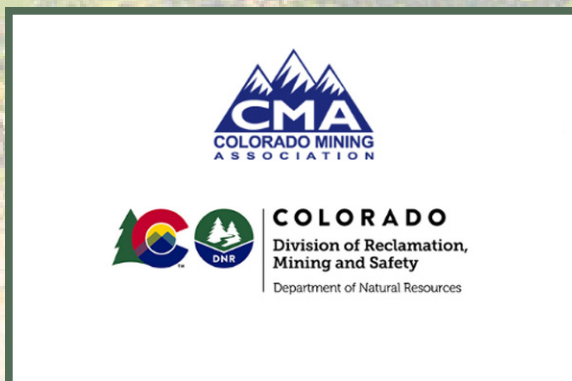
Fans and customers who cannot attend in person will not miss out: all exhibits, announcements, and showcases from the exhibition will be shared on Liebherr's website and social media channels.



By: Will Owen



# 2023 Reclamation & Safety Awards



## 2023 Excellence in Mine Health & Safety Recognition Awards

### OUTSTANDING SAFETY PERFORMANCE

Trapper Mining Inc.



**Trapper Mining, Inc**

### OUTSTANDING SAFETY PERFORMANCE

West Elk Mine, Mountain Coal Company, LLC



**West Elk Mine  
Mountain Coal Company, LLC**

### INNOVATIVE SAFETY TECHNOLOGY

Water Fill Access Bridge

John Clawson & Crew: Doug Griffiths, Nathan Head, Butch Lange, Pete Milner, Michael Peretti, Rodger Polson, Dan Simpson, Ernie Velasquez  
West Elk Mine, Mountain Coal Company, LLC



**John Clawson & Crew  
Water Fill Access Bridge**

### INNOVATIVE SAFETY TECHNOLOGY

Rock-Its Roof Extensometers

Bob Munz  
West Elk Mine, Mountain Coal Company, LLC



**Bob Munz  
Rock-Its Roof Extensometers**



**Mark Blair  
Colowyo Mine  
Colowyo Coal Company, L.P.**

### EXCELLENCE IN INDIVIDUAL SAFETY

Dan Zulan  
Colowyo Mine, Colowyo Coal Company L.P.

Darren Brown  
Colowyo Mine, Colowyo Coal Company L.P.

Mark Blair  
Colowyo Mine, Colowyo Coal Company L.P.



## 2023 Excellence in Mining Reclamation Recognition Awards

### EXCELLENCE IN MINING RECLAMATION

Advanced technology to improve the reclamation process

Methane Abatement on Sealed Section

Jessica Wilczek, West Elk Mine, Mountain Coal Company, LLC



**Jessica Wilczek**

Methane Abatement on Sealed Section

### EXCELLENCE IN MINING RECLAMATION

Overcoming a unique challenge

Elevated Reclamation

Eric Detmer, Climax Mine, Climax Molybdenum Company



**Eric Detmer**

Elevated Reclamation

### JAMES A. PENDLETON MINED

LAND RECLAMATION AWARD

Wendell Koontz



**The Honorable  
Wendell Koontz**

**Airport Runways  
Housing Subdivisions  
Interstate Highways  
State Highways  
County Roads  
State Parks  
Parking Lots  
Feedlot Pads  
Pond & Lake Floors**



**Leading The Industry In Soil Stabilization  
& Quick Setting Flowable Fill**



**Asphalt Pulverization • Cement • Class C Fly Ash •  
Full Depth Reclamation • Lime • Flash Fill**

20011 Cty Rd 13  
PO Box 1449  
Fort Morgan, CO 80701  
970.867-4401  
[www.flashfill.net](http://www.flashfill.net)  
[www.son-haul.com](http://www.son-haul.com)

**SONFILL LLC**



## NMA Applauds Senate Passage of Bipartisan Good Samaritan Legislation

**W**ASHINGTON, D.C. – The National Mining Association applauds the Senate passage of the Good Samaritan Remediation of Abandoned Hardrock Mines Act of 2024 and urges the U.S. House of Representatives to take up this important bipartisan legislation championed by Senators Martin Heinrich (D-N.M.) and Jim Risch (R-Idaho).

**“(The) Senate passage of bipartisan Good Samaritan legislation is a deeply important step forward in tackling the long-overdue cleanup of legacy abandoned mine sites,”** said Rich Nolan, NMA president and CEO. **“This bill allows mining companies and local stakeholders to utilize their equipment and technical expertise to clean up abandoned sites without fear of incurring additional legal liability, removing key obstacles that have prevented the remediation of legacy land and water resources for far too long. We commend Senators Heinrich and Risch for their shared vision and leadership to advance the environmental progress we all desire, and we urge the House to send the bill to the president’s desk.”**



# New study highlights importance of Pennsylvania coal to economy, beyond a reliable energy source

***11,547 jobs, \$3.8 billion in economic value***



**PENNSYLVANIA  
COAL ALLIANCE**

**H**ARRISBURG, Pa. – The Pennsylvania Coal Alliance (PCA) announced an independent report conducted by the Allegheny Conference on Community Development on the economic impact of the coal mining industry in Pennsylvania. The study revealed Pennsylvania's coal industry remains a dominant force, creating economic value in communities across Pennsylvania with major capital investments, payrolls and an abundance of goods and services.

Pennsylvania's coal mining industry is responsible for sustaining 11,547 full-time jobs, of which 5,164 are directly related to coal mining. These jobs produce \$955 million in labor income of which nearly 49% is paid directly into the coal mining industry. The Pennsylvania coal sector also produces approximately \$3.8 billion in economic output with \$2.2 billion of this directly generated by the industry.



**“Pennsylvania-mined coal remains a steadfast contributor to our state’s economy while producing reliable electricity both businesses and consumers demand,”** Sen. Yaw (R-23), Co-Chair of the Legislative Coal Caucus said. **“It is critical that the legislature present a unified voice for the industry moving forward and prioritize affordable, clean, and domestic energy development that promotes a diverse energy portfolio and a safe and dependable electric grid.”**

Coal remains a crucial energy source for Pennsylvania and the United States. In 2022 alone, Pennsylvania produced approximately 8.2 million tons of anthracite coal and 40.2 million tons of bituminous coal statewide from 226 combined mines and refuse sites. In that same year, 58% of Pennsylvania's bituminous coal was utilized domestically to generate electricity, of which 24 million megawatt hours were generated in state.

The study also focused on underground mining in two specific areas in Pennsylvania with a concentrated source of mining activity, including Greene and Washington counties, and the Allegheny Mountain Region, defined as Armstrong, Cambria, Clearfield, Indiana, Jefferson, Somerset, and Westmoreland counties in Pennsylvania. These areas rely heavily on the coal mining industry and produce significant economic results for local residents and businesses.

## ***Economic Impact of the Underground Coal Mining Industry in Greene and Washington Counties***

- \* Approximately 4,050 full and part-time jobs (2,300 direct)
- \* More than \$1.7 billion in economic output (\$1.3 billion direct)
- \* More than \$1 billion added to the regional economy (\$856 million direct)

## ***Economic Impact of the Underground Coal Mining Industry in the Allegheny Mountain Region***

- \* Approximately 1,928 full and part-time jobs (1,043 direct)
- \* More than \$679 million in economic output (\$492 million direct)
- \* Approximately \$386 million added to the regional economy (\$287 million direct)

Both metallurgical and thermal coal are extracted, processed and transported in and beyond Pennsylvania, creating economic activity that contributes to the state's economic vitality. Underground coal operations in the Allegheny Mountain Region mine high quality metallurgical coal, or coking coal, which is vital for the steelmaking process. In 2023 alone, 2.8 million tons of metallurgical coal went to the production of steel in Pennsylvania.



Two elected state leaders confirmed the many benefits coal provides to communities within these regions.



**“The coal industry has served as an anchor in the communities I serve,”** said PA State Representative and Legislative Coal Caucus Co-Chair Jim Struzzi (R, Indiana).

**“This valuable resource is critical to the production of new steel and is essential to ensuring our national security and defense.”**



Coal Caucus Co-Chair Frank Burns (D, Cambria) added, **“You cannot deny the importance of coal to Pennsylvania’s economy, particularly in the Allegheny Mountain region,”** said Burns. **“The coal industry has invested tens of millions of dollars in innovative projects to annually treat billions of gallons of legacy acid mine drainage (AMD). I have seen successes firsthand with the increased tourism and activity in the restored Stonycreek River.”**

The study also offered insight into the indirect and positive impacts to the rail, waterway and truck transportation sectors, specific to coal.

#### Rail Transportation

- \* Approximately 3,131 full and part-time jobs (1,400 direct)
- \* More than \$1.0 billion in total output (\$608 million direct)
- \* Approximately \$567 million added to the Pennsylvania economy, (\$333 million direct)

#### Truck Transportation

- \* Approximately 995 full and part-time jobs (445 direct)
- \* More than \$326 million in total output (\$193 million direct)
- \* Approximately \$180 million added to the Pennsylvania economy (\$106 million direct)

#### Waterway Transportation

- \* Approximately 339 full and part-time jobs (152 direct)
- \* More than \$111 million in total output (\$66 million direct)
- \* Approximately \$61 million added to the Pennsylvania economy (\$36 million direct)



**“This study underscores the critical importance of the century-long relationship between coal and Pennsylvania’s trucking industry,”** said Rebecca Oyler, President and CEO of the Pennsylvania Motor Trucks Association. **“In 2022 alone, trucks moved approximately 19 million tons of bituminous coal, leading to substantial economic benefits across the Commonwealth.”**



Tommy Sankey of the Keystone State Railroad Association also added, **“Coal has always been a valuable and stable product for the railroad industry. We are proud to play a vital role for Pennsylvania coal and its contributions to the overall economy.”**

For the study, the ACCD used various sources including the Mine Safety and Health Administration (MSHA), Pennsylvania Department of Energy, U.S. Bureau of Labor, U.S. Energy Information Administration (EIA), and the Pennsylvania Coal Alliance.

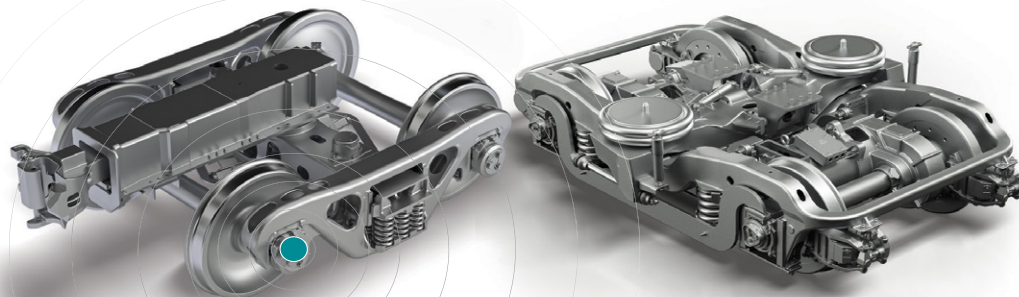
Unmatched scope of **INTEGRATED** systems

**GLOBAL** leaders in reliability

IoT platform drives fleet **VISIBILITY**

Performance-driven **SOLUTIONS**

A century of **INNOVATION**



**T R A I N S M A R T E R**

FREIGHT | TRANSIT | DIGITAL

[amstedrail.com](http://amstedrail.com)

**Amsted Rail**





# PLEASE STAY TUNED FOR OUR BRAVE COAL MINERS WHO LOST THEIR LIVES IN THE INDUSTRY IN 2024

SPECIAL THANKS TO  
OUR CURRENT  
SPONSORS

***Amsted Rail***<sup>®</sup>



**PHILLIPS GLOBAL**

*A Member of The Baughan Group*



**KENNAMETAL**<sup>®</sup>

Please contact [maria@martonickpublications.com](mailto:maria@martonickpublications.com) for the opportunity to sponsor the memorial section



# WORLD NEWS



## GLOBAL COAL DEMAND IS SET TO REMAIN BROADLY FLAT THROUGH 2025

*Despite the rapid expansion of renewables, the huge growth of electricity demand in key economies indicates the world's consumption of coal will stay largely stable this year and next*

**G**lobal coal demand is set to remain broadly unchanged in both 2024 and 2025 as surging electricity demand in some major economies offsets the impacts of a gradual recovery in hydropower and the rapid expansion of solar and wind, according to the IEA's latest update on coal market trends worldwide.

The world's use of coal rose by 2.6% in 2023 to reach an all-time high, driven by strong growth in China and India, the two largest coal consumers globally, the IEA's Coal Mid-Year Update finds. While coal demand grew in both the electricity and industrial sectors, the main driver was the use of coal to fill the gap created by low hydropower output and rapidly rising electricity demand.

In China, which accounts for more than half of global coal consumption, electricity generation from hydropower has been recovering in 2024 from last year's exceptionally low levels. This, alongside the continued rapid deployment of solar and wind, is significantly slowing down the growth in coal use in 2024. But another major annual increase in China's electricity demand, forecast at 6.5% in 2024, makes a decline in the country's coal consumption unlikely. In India, coal demand growth is set to decelerate in the second half of 2024 as weather conditions return to seasonal averages. In the first half of the year, India's coal consumption rose sharply as a result of low hydropower output and a massive increase in electricity demand due to extreme heatwaves and strong economic growth.

Coal demand in Europe is continuing on the downward trend that began in the late 2000s, largely due to emissions reduction efforts in power generation. After having fallen by more than 25% in 2023, coal power generation in the European Union is forecast to drop by almost as much again this year. Coal use has also been contracting significantly in the United States in recent years, but stronger electricity demand and less switching from coal to natural gas threaten to slow this trend in 2024. Japan and Korea continue to reduce their reliance on coal, although at a slower pace than Europe.



**"Our analysis shows that global coal demand is likely to remain broadly flat through 2025, based on today's policy settings and market trends,"** said Keisuke Sadamori, IEA Director of Energy Markets and Security.

**"The continued rapid deployment of solar and wind, combined with the recovery of hydropower in China, is putting significant pressure on coal use. But the electricity sector**



**is the main driver of global coal demand, and electricity consumption is growing very strongly in several major economies. Without such rapid growth in electricity demand, we would be seeing a decline in global coal use this year. And the structural trends at work mean that global coal demand is set to reach a turning point and start declining soon."**

On the supply side, global coal production is expected to decrease slightly in 2024 after steady growth the year before. In 2024, coal production in China is moderating after two years of staggering growth. In India, the push to boost coal production continues, with a supply increase of around 10% expected in 2024. In advanced economies, coal production is in decline, broadly reflecting demand.

The report finds that trade volumes are at the highest levels ever seen despite the collapse of imports in Europe and the decline in imports in Northeast Asia (Japan, Korea and Chinese Taipei) since 2017. However, other countries are stepping in to take up available supply. In 2024, Vietnam is set to become the fifth largest coal importer, surpassing Chinese Taipei. Imports to China and India remain at all-time highs.

Despite declining domestic production in China in the first half of this year, tighter sanctions on Russian producers and disruptions in a few exporting countries, the global coal market is well supplied, according to the report. With more stable natural gas prices than in recent years, coal prices remained range-bound in the first half of 2024. They have returned to levels last seen before the global energy crisis but remain elevated due to inflationary pressures.



# Coal proves hard to dislodge from US power system

By: Gavin Maguire

**L**ITTLETON, Colorado - U.S. coal-fired power generation over the first four months of 2024 shrank to its lowest total in four years, but retained a more than 15% share of the national power mix despite widespread efforts to transition energy systems away from fossil fuels.

Coal power output was 8.3 million megawatt hours (MWh) through April, compared to 8.5 million MWh during the same period in 2023, according to LSEG data.

That 1.8% drop in coal-fired output from the year before extends coal's steady decline in U.S. power generation, and the output total marks a 30% fall from the same four months of 2021.

However, coal accounted for an average share of 15.6% of total U.S. power generation through April, which is down from a 16.4% share through April 2023 but is still larger than the power share of any form of renewable energy during that period.

In addition, coal-fired generation routinely climbs from now through September as power firms must boost supplies to meet elevated electricity demand for air conditioning during the hottest months of the year.

This means that coal's share of the U.S. power mix will almost certainly climb further over the coming months, resulting in elevated power sector emissions across several states.

## SHOULDER SEASON LOWS

Coal use in the U.S. power system tends to drop to its lowest levels for the year each spring and autumn, when overall power demand for heating and cooling is at its minimum.

Due to recent rapid increases in generation capacity from wind and solar farms, renewables and other clean power sources had been widely expected to account for a majority of U.S. generation needs during the so-called spring shoulder season, and for fossil fuel use to be curbed to a minimum.

But while coal use this year did hit a low for the January through April window, total coal-fired generation across the U.S. did not drop as sharply as it could have due to fairly anemic growth in U.S. wind power output during that period.

Total wind power generation grew by only 1.4% during the first four months of 2024 from the same period in 2023, LSEG data shows, which is substantially less than total estimated wind capacity increases over

that same period.

That relatively flat growth rate from wind farms meant power firms needed to maintain relatively high levels of fossil fuel-fired power through early May, even though total power use for heating usually drops off from April.

## ALREADY CRANKING UP

Recent heat waves in Texas have forced power suppliers there to already lift generation for cooling systems, ensuring the 2024 spring shoulder season may already be behind us and power supplies may keep growing until the end of summer.

Texas is the largest coal-fired power generator in the United States, and produced 71,615 gigawatt hours of coal-fired electricity in 2023, according to energy think tank Ember.

Texas is also the top emitter of coal-fired pollution, discharging nearly 60 million metric tons of carbon dioxide and related gases last year from coal power plants. However, coal only accounts for a relatively small share of Texas' total power generation at just over 13% in 2023.

Five other states rely on coal to produce more than half of their total electricity supplies: North Dakota, Missouri, Kentucky, Wyoming and West Virginia.

West Virginia's power system uses coal to produce over 85% of its electricity, while Wyoming and Kentucky both rely on coal for around 70% of electricity supplies. An additional eight states rely on coal for a fifth or more of electricity supplies.

Such a wide span of coal-dependent power systems means that further steep cuts to coal use will likely be difficult over the near term, even with the widespread rollout of new renewable energy sites throughout the country.

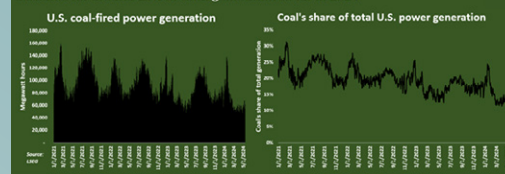
What's more, with temperatures throughout the United States averaging above long-term averages and trending higher, even greater use of air conditioners can be expected in each state during the hottest parts of the year, adding to power demand.

That means power firms may have no choice but to keep using large amounts of coal and other fuels to ensure sufficient power supplies over the near-to-medium term.



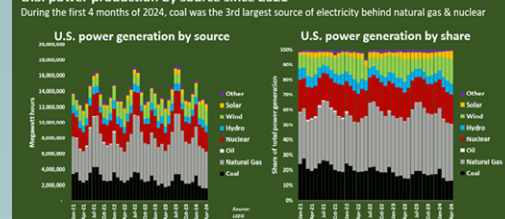
(L-R) Cody Schlein, 31, and Ivan Sweinhart Jr., 55, drill into anthracite coal in a drift mine in Pottsville, Pennsylvania, U.S.

U.S. coal power generation has been gradually falling for years, but still accounts for around 15% of total generation so far in 2024



U.S. coal power generation has been gradually falling for years, but still accounts for around 15% of total generation so far in 2024

U.S. power production by source since 2021



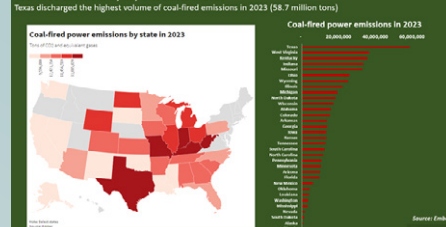
During the first 4 months of 2024, coal was the 3rd largest source of electricity behind natural gas & nuclear

U.S. coal power generation tends to climb during the summer due to higher electricity demand from air conditioners

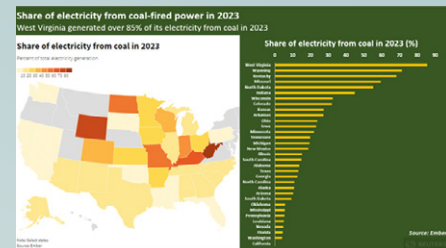


U.S. coal power generation tends to climb during the summer due to higher electricity demand from air conditioners

Coal-fired emissions by key U.S. states in 2023

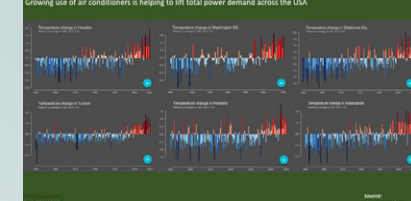


Coal-fired emissions by key U.S. states in 2023



Share of electricity from coal-fired power in 2023

Temperatures are trending higher throughout the United States, lifting power demand. Growing use of air conditioners is helping to lift total power demand across the USA.



Temperatures are trending higher throughout the United States, lifting power demand





## Good for Economics, Engines, and the Environment

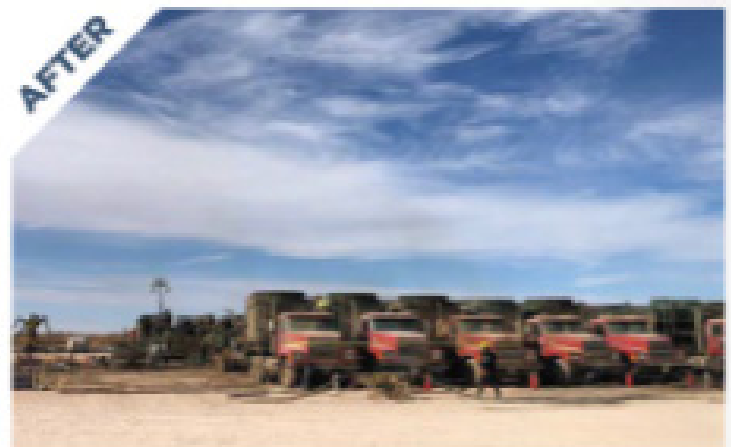
Upgrade your diesel to premium diesel performance with Crown CRT® Fuel Borne Catalysts. Our data-driven demonstration strategy will show:

- 6-9% fuel efficiency improvement
- 6-9% carbon/CO<sub>2</sub>e emissions reduction
- 30-40% reduced engine oil soot
- 10-25% improved lubricity protects injectors
- Typically greater than 2:1 return on expense!

Crown's CRT Catalysts are differentiated from normal fuel additives because of the patented fuel borne catalyst technology. This suspended particle promotes cleaner combustion earlier during the power stroke - think of it as advancing the timing of your diesel engine.

The catalysts are safe for use in all diesel engines and are easy to deploy with our proven on-location dosing system.

Contact us to discuss and determine if a CRT Demonstration is right for your operation.



### **Nick Simmons**

*VP Performance Chemicals Group*  
nsimmons@Crown-CRT.com  
(303) 748-1980

### **Arthur Brown**

*VP Technical Services*  
abrown@Crown-CRT.com  
(970) 903-9199



[www.Crown-CRT.com](http://www.Crown-CRT.com)



## CURRENT NATIONAL COAL TRANSPORTATION ASSOCIATION MEMBERS

A. Stucki Company	Grand River Dam Authority	Ramaco Coal
Ameren Energy Services	High Country Railcar	RAS Data Services
American Consolidated Natural Resources, Inc.	Intermountain Power Service Corp.	Salt River Materials Group
American Electric Power	Kiewit Mining Group, Inc.	Salt River Project
Amsted Rail	L.E. Peabody & Associates, Inc.	Sandy Creek Energy Station
Arch Resources, Inc.	Levin Richmond Terminal	Slover & Loftus, LLP
Arizona Electric Power Coop. Inc.	Lexair, Inc.	Southern Company Services
Associated Electric Coop., Inc.	LG&E and KU Energy	Strato, Inc.
Associated Terminals	Lower Colorado River Authority	Tennessee Valley Authority
AVENTICS Corporation (Emerson)	Luminant Energy	Transportation Services Inc.
Basin Electric Power Cooperative	McCloskey by OPIS	TrinityRail
Blackhawk Mining	McConway & Torley, LLC	Tri-State Generation and Transmission Association
Cal Portland Cement	Mid-American Energy Company	TUCO/NexGen Services
Cathcart Rail, LLC	Midland Railway Supply	Wabtec Corporation
Cleco Corporation	Miner Enterprises Inc.	WEC Energy Group
Coal Network	Minnesota Power	Wells Fargo Rail
Colorado Springs Utilities	MinTech Enterprises, LLC	Western Fuels Association, Inc.
Consumers Energy Company	Mississippi Lime	Xcel Energy
Cooper Consolidated	Navajo Transitional Energy Company	Xcoal Energy & Resources
CPS Energy	NiSource	
Crown Carbon Reduction Technologies	Nebraska Public Power District	
Dairyland Power	New York Air Brake	
David J. Joseph Company	Oglethorpe Power Corp.	
Detroit Edison	Oklahoma Gas & Electric Co.	
Duke Energy	Omaha Public Power District	
Eco Material Technologies	Peabody Energy	
Entergy Services, Inc.	Platte River Power Authority	
Exponent	Progress Rail Services, Inc.	
GATX Rail	Railroad Financial Corporation	



# CURRENT AMERICAN COAL COUNCIL MEMBERS

## Coal Consumers

Ameren Missouri  
American Electric Power  
Blue Sky Energy  
Cleco Power, LLC  
Consumers Energy  
Dominion Energy Fuel Services, Inc.  
DTE Electric Company  
Duke Energy  
Entergy  
JERA Global Markets North America, LLC  
LafargeHolcim US Inc.  
LG&E and KU Energy  
Lower Colorado River Authority  
MidAmerican Energy Company  
NRG  
Omaha Public Power District  
Platte River Power Authority  
Salt River Project  
Sandy Creek Services, LLC  
Tennessee Valley Authority  
Xcel Energy

## Coal Suppliers

Alliance Coal, LLC  
Arch Resources  
Blackhawk Mining, LLC  
Bluegrass Natural Resources LLC  
Central Coal Company  
CONSOL Energy Inc.  
Converse & Co Inc.  
Glencore Ltd.  
Global Coal Sales Group, LLC  
Hallador Energy Company  
Integrity Coal Sales, Inc.  
Iron Senergy  
JRL Coal  
Kiewit Mining Group Inc.  
Knight Hawk Coal, LLC  
Lighthouse Resources Inc.  
Navajo Transitional Energy Company, LLC  
NexGen Coal Services, Ltd.  
Peabody  
PM Coal Company, LLC  
Ramaco Coal, LLC  
River Trading Company, LTD  
Robindale Energy Services, Inc.  
Usibelli Coal Mine, Inc.  
Western Fuels Association  
Westmoreland Mining LLC  
Xcoal Energy & Resources

## Contributing Supporters

American Coal Ash Association  
America's Power  
Armstrong Advocacy  
Carbon Utilization Research Council  
Coal Association of Canada  
Energy Policy Network  
Illinois Coal Association  
International CCS Knowledge Centre  
Lignite Energy Council  
Montana Coal Council  
National Tribal Energy Association  
West Virginia Coal Association  
Texas Mining Reclamation Association

## Coal Support Services

Analytical & Environmental  
Buchanan Ingersoll & Rooney PC  
Eco Material Technologies Inc.  
Gallagher Clean Energy  
Hampton Roads Testing Labs., Inc.  
Natural Resource Partners LP  
Sampling Associates International, LLC  
SGS North America Inc.  
Standard Laboratories, Inc.  
Veolia  
Equipment & Materials  
Charah Solutions, Inc.  
Crown Carbon Reduction Technologies  
Eco Solution Distributing  
JENNMAR  
Komatsu North America Mining  
Liebherr USA, Co. Mining  
Martin Engineering  
MinTech Enterprises  
Progress Rail  
Trinity Industries

## Financial, Capital & Marketing

Durham Capital Corporation

## Technical & Economic Consultants

Energy Ventures Analysis, Inc.  
Schneid Energy & Mining Consultants, LLC  
McCloskey by Opis  
John T. Boyd Company  
Marshall Miller & Associates  
Weir International, Inc.  
Net-Negative CO2 Baseload Generation

## Energy Traders

Deep Creek Resources, LLC  
ITC Coal Resources International Inc. (ITOCHU)  
M Resources Pty Ltd  
Visa Commodities AG

## Transportation

Alleanza Rail, LLC  
BNSF Railway  
Canal Barge Company, Inc.  
Capes Shipping Agencies  
CN  
Cooper Consolidated, LLC  
Crouse Corporation  
CSX Transportation  
Donora River Terminal  
Interlake Maritime Services  
Norfolk Southern  
Paducah & Louisville Railway  
Savage Services Corp.  
SCH Services, LLC  
T. Parker Host  
The Indiana Rail Road Company  
Union Pacific Railroad  
Warrenton River Terminal, LLC  
Westshore Terminals Limited Partnership



# CURRENT AMERICAN COAL ASH ASSOCIATION MEMBERS

## Utility Members

Ameren Missouri  
American Electric Power (AEP)  
Arizona Electric Power Cooperative  
Big Rivers Electric Corporation  
Colorado Springs Utilities  
Colstrip Energy Limited Partnership  
Dairyland Power Cooperative  
Duke Energy Corporation  
FirstEnergy Corp  
Great River Energy  
Kansas City Board of Public Utilities  
LG&E and KU Services Company  
Muscatine Power & Water  
Nebraska Public Power District  
Southern Company  
Talen Energy  
Tennessee Valley Authority  
WEC Business Services LLC

## Non-Utility Members

Heritage Environmental Services

## General Marketer Members

ASHCOR USA Inc  
Charah Solutions, Inc.  
Eco Material Technologies Inc.  
EP Power Minerals Americas  
Heidelberg Materials  
Kansas City Fly Ash LLC  
LafargeHolcim – Geocycle  
National Minerals Corporation  
Nebraska Ash  
Salt River Materials Group  
Separation Technologies, LLC  
The SEFA Group  
Waste Management

## Specialty Marketer Members

Ash Grove Cement  
Beneficial Reuse Management/Gypsoil  
Harsco Environmental  
USC Technologies

## Associate Members

AECOM  
AJ Transport  
Allu Inc  
ASH Mineral Solutions  
Braun Intertec  
Brixx Technologies  
Burns & McDonnell  
CCR Strategies & Solutions, LLC  
CertainTeed Gypsum  
Civil & Environmental Consultants, Inc.  
Clear Water Services

ClimeCo, LLC  
Commercial Liability Partners LLC  
Coomtech  
CRC Coating Technologies Inc.  
DONROSS LLC  
Dustmaster Enviro Systems  
Environmental Specialties International, Inc.  
FeX, LLC  
Firmographs, LLC  
Franklin Technical Solutions  
Frontier Group of Companies  
GAI Consultants, Inc.  
GEI Consultants, Inc.  
Georgia Pacific Gypsum LLC  
Global Containment Solutions  
Gradient  
Griffin Dewatering  
Haley & Aldrich, Inc.  
Hallaton Environmental Linings  
Hanson  
Hive Aggregates Limited  
HTH, LLC  
IDA Power, LLC  
John Ward Inc.  
Keller  
Kline Consulting  
LB Industrial Systems  
Lhoist North America  
Loureiro Engineering Associates  
M A Norden Company, LLC  
Nicholson Construction Company  
Nu-Rock Technology USA  
NXT Innovations  
Ohio Valley Cement Materials  
Ozinga Bros  
P. Cassels Law, PLLC  
PENTA Engineering Corporation  
Phillips and Jordan, Inc.  
Phoenix Environmental Research  
QTS Group LLC  
Quikrete Companies, LLC  
Ramboll  
Richard Kinch  
Romano Consulting Company  
Saiia Construction Company, LLC  
Schnabel Engineering  
Seneca Engineering  
Sevenson Environmental Services Inc.  
SMBC Rail Services  
Son-Haul, Inc.  
Sonoash LLC  
Stantec  
Superior Belt Filter  
Tarmac International  
Tetra Tech  
The Mouat Company

Trans Ash, Inc.  
TRC  
TTL, Inc  
United States Gypsum Company  
University of Kentucky  
Vecor Technologies  
Verdantas  
Waste Connections, Inc.  
Watershed Geo  
WSP  
Xylem Dewatering  
Yukon Technology, Inc.

## Individual Members

Daniel Benkeser  
Bethany Buckland  
Mohammed Dardona  
Sen Du  
Livingstone Dumenu  
Farzaneh Elyasigorji  
Jenberu Feyyisa  
Brigitte Leora Hay  
Sarah Hodges  
Ryan Holmes  
Eberechi Ichi  
Dimitrios Kakaris Porter  
Shinhyu Kang  
Engy Khoshit  
Zhipeng Li  
Ifeanyi Mbah  
Richard L Pepper  
Sivakumar Ramanathan  
Siamak Riyazi  
Pravin Saraswatula  
Casey Sunberg  
Ross Taggart  
Ying Wang  
Trevor Williamson  
Gang Xu

## Honorary Members

Dale Baker  
Claude Brown  
James Burnell  
Dean M. Golden  
Howard Humphrey  
James Merkel  
Tom Pasko  
Joseph Pound  
Simon Prins  
Jim Weeks



## CURRENT ALLTRICITY NETWORK MEMBERS

Affiliated Engineers, Inc.  
 Alberici Constructors  
 Altec Industries, Inc.  
 Alumbra LLC  
 American Coal Council  
 American Fire  
 American Public Power Association  
 Ampirical  
 APTIM  
 Arizona Electric Power Cooperative, Inc.  
 Arizona Public Service  
 Arkansas River Power Authority  
 ASEC Inc.  
 Asplundh Tree Expert, LLC  
 Associated Electric Cooperative, Inc.  
 Austin Energy  
 Babcock & Wilcox Company  
 Babcock Power, Inc.  
 Barr Engineering Co.  
 Basin Electric Power Cooperative  
 Black & Veatch Corp.  
 Black and McDonald  
 Black Hills Corporation  
 Black Hills Electric Cooperative  
 Boilermakers Local #101  
 Boone Electric Cooperative  
 Bountiful City Light & Power  
 Brooks Manufacturing Company  
 Burns & McDonnell  
 Butler Public Power District  
 C. M. Lantana Consulting  
 Carbon Power & Light, Inc.  
 CDG Engineers, Inc.  
 Center Electric Light & Power System  
 Central Nebraska Public Power and Irrigation District  
 ChemTreat  
 Chimney Rock Public Power District  
 City Light & Power, Inc.  
 City of Alliance Electric Department  
 City of Aztec Electric Department  
 City of Farmington  
 City of Fountain  
 City of Garden City  
 City of Gillette  
 City of Imperial  
 City of Yuma  
 Collaborative Learning, Inc./Collaboration Unlimited  
 Colorado Highlands Wind LLC  
 Colorado Rubal Electric Association  
 Colorado Springs Utilities  
 Colorado State University  
 Commonwealth Associates, Inc.  
 Copperleaf

Core Electric Cooperative  
 CPS Energy  
 D. C. Langley Energy Consulting, LLC  
 Delta Montrose Electric Assn.  
 Durr Universal, Inc.  
 El Paso Electric Company  
 Electrical Consultants, Inc.  
 ElectroTech, Inc.  
 Emerson  
 The Empire District Electric Company  
 Empire Electric Association, Inc.  
 Energy Executive Course University of Idaho  
 Energy Providers Coalition for Education (EPCE)  
 Engineering, Procurement & Construction, LLC  
 ESC engineering An EN Engineering Company  
 Estes Park Power & Communications  
 Evans, Lipka and Associates, Inc.  
 Evapco Dry Cooling, Inc.  
 Energy, Inc.  
 Exponential Engineering Company  
 FlexGen  
 Forbes Bros Group of Companies  
 Fort Collins Utilities  
 Fugro  
 Gamber-Johnson LLC  
 Gannett Fleming Inc.  
 GE Gas Power  
 General Grid Services  
 Grand Island Utilities  
 Great Plains Safety and Health Organization  
 Great Southwestern Construction, Inc.  
 Hartigan Power Equipment Company  
 HDR  
 Highline Electric Assn.  
 Holy Cross Energy  
 Hubbell Power System  
 Hughes Brothers, Inc.  
 IBEW, Local Union 111  
 IEC Rocky Mountain  
 IMCORP  
 Incorporated County of Los Alamos Department of Public Utilities  
 Interstate Electrical Contractors, Inc.  
 Irby  
 James Industries, Inc.  
 Kansas City Board of Public Utilities  
 KD Johnson, Inc.  
 Kiewit

Kit Carson Electric Cooperative  
 KnowledgeVine, LLC  
 La Junta Municipal Utilities  
 La Plata Electric Association, Inc.  
 Lamar Utilities Board  
 Lamons  
 Las Animas Municipal Light & Power  
 Lewis Associates, Inc.  
 Liberty Industrial Group Inc.  
 Lincoln Electric System  
 LiveEO, Inc.  
 Longmont Power & Communications  
 Loup River Public Power District  
 Loveland Water & Power  
 Lower Colorado River Authority  
 M&S Engineering;  
 MasTec Clean Energy & Infrastructure



## CURRENT ALLTRICITY NETWORK MEMBERS

Merrick & Company	RS Electric Utility Services	Wheat Belt Public Power District
Missouri River Energy Services	S&B Engineers and Constructors	Wheatland Electric Cooperative
Mitsubishi Power Americas, Inc.	S&C Electric Company	Wheatland Rural Electric Assn.
Morgan County Rural Electric Assn.	Safety One Training International, Inc.	Wheeler Power Systems
Mosaic	San Isabel Electric Association, Inc.	White River Electric Assn., Inc.
Mountain Parks Electric, Inc.	San Miguel Power Assn.	Wilson & Company, Engineers & Architects
Mountain View Electric Association, Inc.	Sangre De Cristo Electric Assn.	WSU Energy Systems Innovation Center
Mycoff Fry Partners LLC	Sargent & Lundy	Xcel Energy
National Powerline LLC	Savage	Y-W Electric Association, Inc.
National Renewable Solutions	Schweitzer Engineering Laboratories	Zachry Group
Navopache Electric Cooperative, Inc.	SeeKing HR	
Nebraska Public Power District	Sellon Forensics Inc.	
NEI Electric Power Engineering, Inc.	Shannon Communications Group	
NextEra Energy Resources	Shermco Industries	
NFront Consulting LLC	Siemens Energy Inc.	
Nooter/Eriksen, Inc.	SMTX Utilities	
Norris Public Power District	Solomon Associates	
Northeast Community College	South Central PPD	
Northeast Nebraska Public Power District	Southeast Colorado Power Assn.	
Northwest Rural Public Power District	Southeast Community College	
Olsson	Southern Pioneer Electric Company	
Omaha Public Power District	Southwest Public Power District	
Onward Energy	Southwire Company	
Osmose Utilities Services, Inc.	Springville City Power	
PacifiCorp	SPR	
Panhandle Rural Electric Membership Assn.	Stanley Consultants, Inc.	
PAR Electrical Contractors, LLC	Sturgeon Electric Co., Inc.	
PAR Western Line Contractors, LLC	Sulphur Springs Valley Electric Cooperative	
Peak Utility Services Group	Sunflower Electric Power Corporation	
Pedernales Electric Cooperative	Taber International, LLC	
Peterson Company	Technically Speaking, Inc.	
Pike Engineering	Tenaska Marketing Ventures	
Pinyon Environmental, Inc.	TG Advisers, Inc.	
Pioneer Electric Cooperative, Inc.	Towill, Inc.	
Pipefitters Local Unio #208	Tri-State Generation and Transmission Assn.	
Platte River Power Authority	Ulteig Engineers, Inc.	
PNM Resources	United Engineers & Constructors, Inc.	
Poudre Valley Rural Electric Assn.	United Power, Inc.	
Power Contracting, LLC	UNS Energy Corporation	
POWER Engineers, Inc.	Utility Telecom Consulting Group, Inc.	
Power Equipment Specialists, Inc.	Verve Industrial Protection	
Power Pole Inspections	Wartsila North America, Inc.	
PRE, Inc.	Webster Associates	
Preferred Sales Agency, Ltd	West Peak Energy, LLC	
Primary Energy	Western Area Power Administration	
PSM (Power System Mfg., LLC)	Western Line Constructors Chapter, Inc.	
Quanta Services	NECA	
	Westwood Professional Services	



**SKYWARD**  
SPECIALTY INSURANCE

Energy

Mining Operations Insurance  
is our Specialty. It's what we do best.



## Specialized Coverage for the **Mining and Quarry** Industry

**Skyward Specialty Energy Division** offers multi-line coverage options for all types of mining operations, contractors and related operators through our wholly-owned (A-) rated insurance carriers.

**Skyward Specialty Mining** underwriters provide competitive terms to select agents and brokers nationwide on an admitted or surplus lines basis.

---

For inquiries contact:

Jim Godfrey, Executive Vice President - Head of Energy.

[jgodfrey@skywardinsurance.com](mailto:jgodfrey@skywardinsurance.com)

W: 205.332.8118 | C: 205.936.3752





## US Department of Labor announces up to \$1M in Brookwood-Sago grants available to promote mine safety, health education; training

*Program honors 25 miners lost in disasters in Alabama in 2001, West Virginia in 2006*

**W**ASHINGTON – The U.S. Department of Labor announced up to \$1 million in funding available in Brookwood-Sago grants to support the delivery of education and training to the nation's mining community to help them identify, avoid and prevent unsafe and unhealthy working conditions.

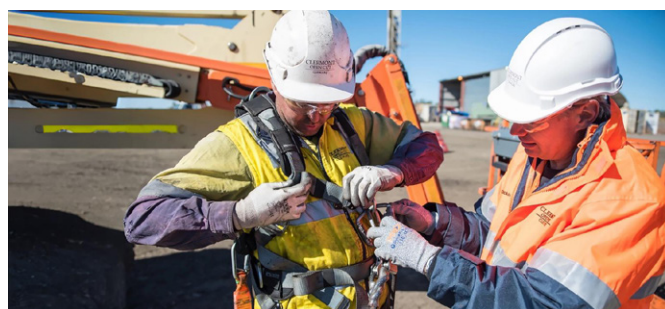
Established by the Mine Improvement and New Emergency Response Act of 2006, the program honors 25 miners who perished in disasters in 2001 at the Jim Walter Resources #5 mine in Brookwood, Alabama, and at the Sago mine in Buckhannon, West Virginia, in 2006.

**Administered by the department's Mine Safety and Health Administration, the grants will fund education and training programs focused on workplace safety and health hazards faced by miners. These programs will focus on the following hazards:**

- Exposure to respirable dust and crystalline silica.
- Safe use of powered haulage and mobile equipment.
- Mine emergency and mine rescue preparedness.
- Electrical safety.
- Insufficient training of new and inexperienced miners.
- Lack of training for managers and supervisors performing mining tasks.
- Pillar safety for underground mines.
- Lack of personal protective equipment to prevent falls from heights and other unsafe conditions.

The Brookwood-Sago grant program aligns with the Biden-Harris administration's efforts to improve the safety and working conditions for nation's miners.

In awarding the grants, MSHA will give special emphasis to education and training programs that target miners at smaller mines and underserved populations in the industry and make diversity, equity, inclusion and accessibility priorities.





## EVENTS

ALLTRICITY  
NETWORKNCTA (NATIONAL COAL  
TRANSPORTATION ASSOCIATION)

September 9 – 11, 2024  
**NCTA 50th Annual Business Meeting and Conference**  
 Hacienda Del Sol Guest Ranch  
 5501 N. Hacienda Del Sol Road,  
 Tucson, AZ 85718

ACAA (AMERICAN COAL ASH  
ASSOCIATION)

October 21 – 23, 2024  
**ACAA 2024 Fall Membership Meeting**  
 Hilton Lexington Downtown  
 Lexington, Kentucky

January 28 – 29, 2025  
**ACAA 2025 Winter Membership Meeting**  
 Omni Grove Park Inn  
 Asheville, North Carolina

September 16 – 18, 2024  
**2024 Alltricity Network Fall Convention**  
 Hyatt Regency Lost Pines Resort & Spa  
 575 Hyatt Lost Pines Rd  
 Cedar Creek, TX 78612

September 30, 2024  
**PLANNING SESSION: 2025 Alltricity Network Spring Conference**  
 Kiewit TIC Training Center  
 2551 N. Picadilly Road  
 Aurora, CO 80019

October 15 – 16, 2024  
**Distribution Engineering & Planning Workshop**  
 Evergy, One Kansas City Place  
 1200 Main St  
 Suite 114  
 Kansas City, MO 64105

November 6, 2024  
**November 2024 Safety Roundtable**  
 Austin Energy  
 2500 Montopolis Dr  
 Austin, TX 78741

March 19 – 20, 2025  
**2025 Transmission & Substation Renewables Conference**  
 Tri-State Generation & Transmission Association  
 1100 W 116th Ave  
 Westminster, CO 80234

May 5 – 7, 2025  
**2025 Alltricity Network Spring Conference**  
 Thompson Dallas Hotel, by Hyatt  
 205 N Akard St  
 Dallas, TX 75201

September 29 – October 1, 2025  
**2025 Alltricity Network Fall Convention**  
 Loews Kansas City Hotel  
 1515 Wyandotte St  
 Kansas City, MO 64108

TO SUBMIT MORE EVENTS FOR PUBLISH OR TO INCLUDE INFORMATION ABOUT YOUR ORGANIZATIONS CALENDAR OF EVENTS, PLEASE EMAIL [INFO@MARTONICKPUBLICATIONS.COM](mailto:INFO@MARTONICKPUBLICATIONS.COM) . THANK YOU.



# UPCOMING ISSUE

**UPDATED MEMBER DIRECTORIES**

**WORLD NEWS**

**MARKET TRENDS**



## INDEX TO ADVERTISERS

**Amsted Rail**

**10-16-0BC**

[www.amstedrail.com](http://www.amstedrail.com)

**Crown-CRT**

**20**

[www.crown-crt.com](http://www.crown-crt.com)

**Skyward Specialty Insurance**

**26**

[www.skywardinsurance.com](http://www.skywardinsurance.com)

**Son Haul Inc**

**13**

[www.son-haul.com](http://www.son-haul.com)

**The Hilliard Corporation**

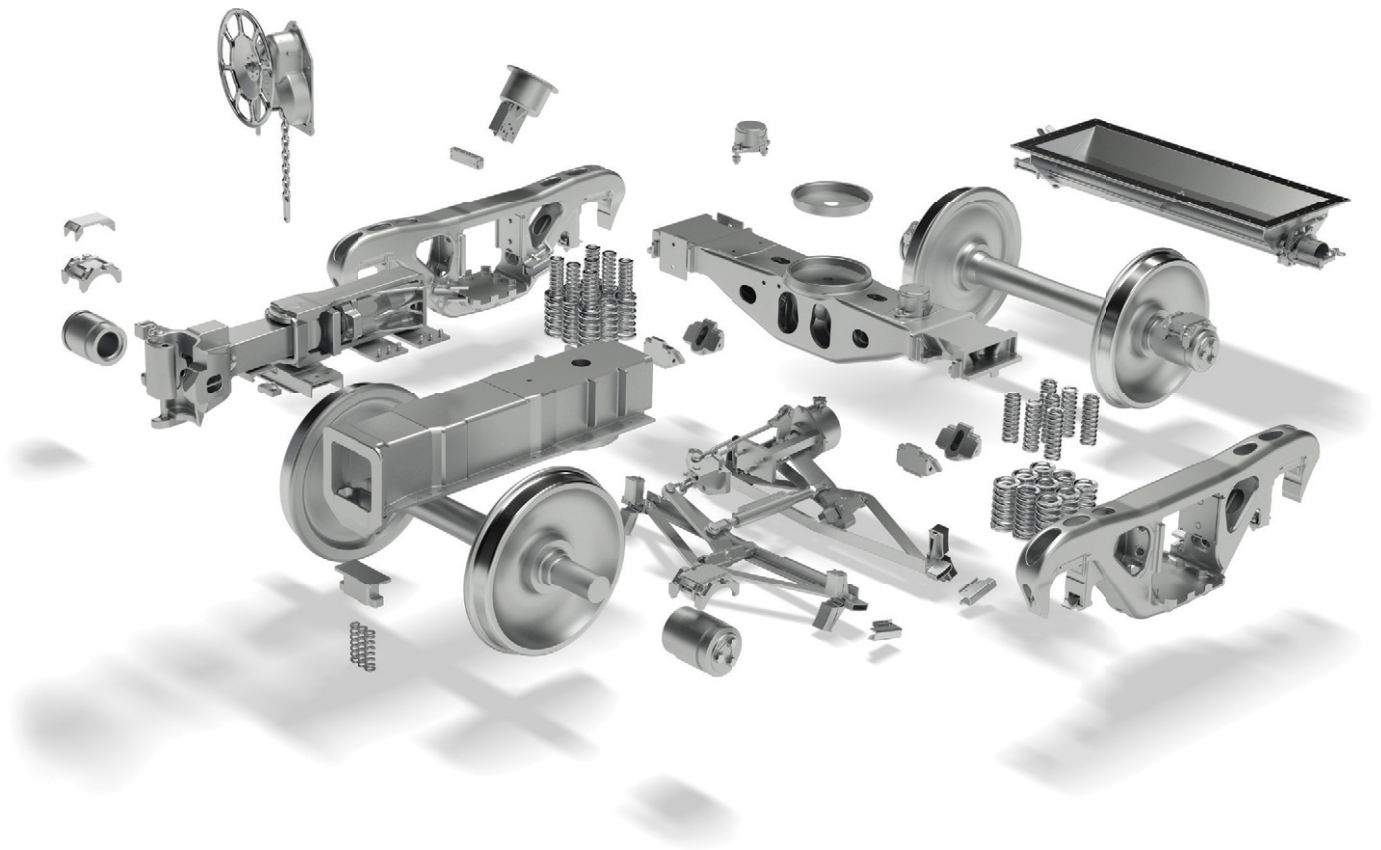
**08**

[www.hilliardcorp.com](http://www.hilliardcorp.com)



# MORE THAN PARTS. PERFORMANCE.

Amsted Rail, the global leader in fully integrated freight car systems for the heavy haul rail market.



## TRAIN SMARTER

**FREIGHT** | TRANSIT | DIGITAL

***Amsted Rail***<sup>®</sup>

[amstedrail.com](http://amstedrail.com)