



TAJ WELLINGTON MEWS
COFFEE-TABLE BOOK,
A LUXURY 40 PAGES AND
HARDCOVER ART BOOK.

HERE'S TO A CITY WHERE
DREAMS COME TRUE AND
IMPOSSIBLE IS NOTHING.

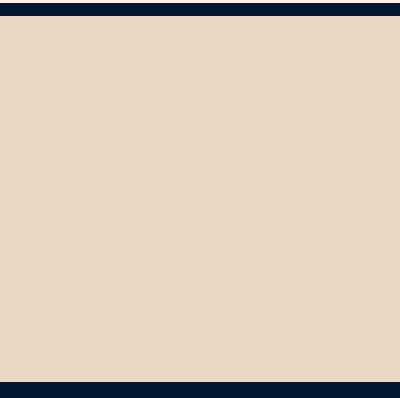
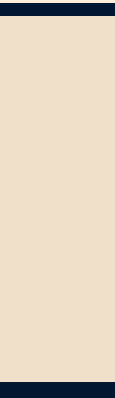


Created exclusively for the prestigious Taj Wellington Mews, Dubai Islands, this beautiful book offers a glimpse into the residence's unparalleled design, architecture, the Tajness and the visionaries behind this masterpiece.

THE JOURNEY OF LUXURY
IS INCOMPLETE WITHOUT
A STEP INTO THE ROYAL ERA
AND ITS INDULGENCE.



It serves as a luxurious keepsake for clients and special guests,
leaving them inspired to be a part of this emerging wonder.



COLOUR PALETTE

Inspired by the colours of Taj hospitality,
heritage and timeless sophistication.

THE BOOK

CG Corp|Global®
www.cgcorpglobal.com

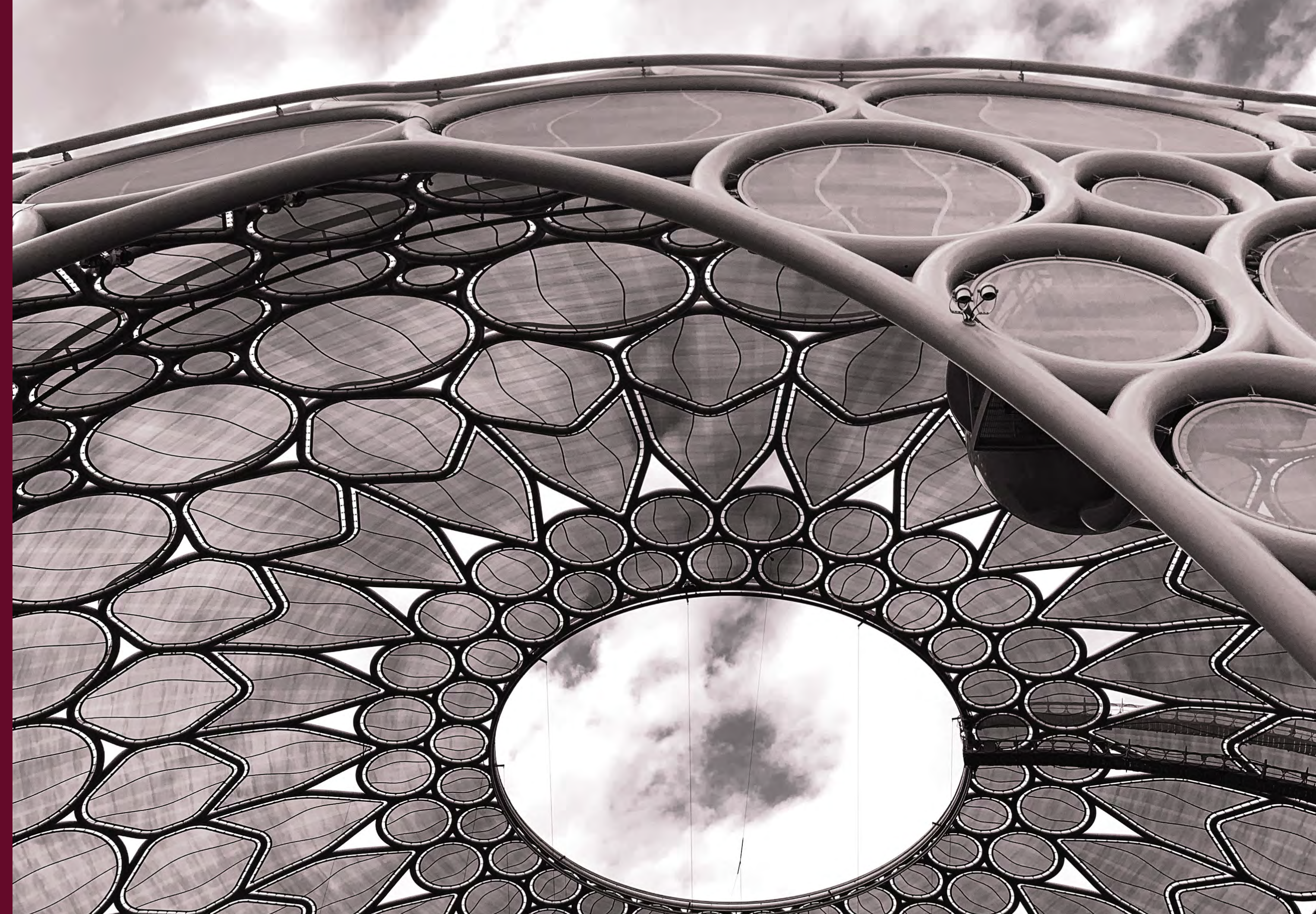
TAJ WELLINGTON MEWS RESIDENCES



WELLINGTON MEWS RESIDENCES

DUBAI

HERE'S TO A CITY WHERE
DREAMS COME TRUE AND
IMPOSSIBLE IS NOTHING.





A CITY BEYOND THE DESERT

In the heart of the Arabian desert, Dubai stands tall as a testament to opulence, where extravagance is a way of life. With its iconic infrastructure and architectural marvels like Burj Khalifa and Palm Jumeirah, it's a city with unparalleled luxury at every turn. Winning at its strategic geographic location, beautiful blend of innovation and heritage, and world-class lifestyle, Dubai is where the new world is emerging.



DUBAI: A TOURIST PARADISE

Dubai has been crowned the No.1 global destination in the Tripadvisor® Travellers' Choice Awards 2022 and 2023. A total of 12.40 million people visited Dubai between January and September 2023, making Dubai the 4th most visited city in the world after Bangkok, Paris and London.

This recognition supports the goal of the recently launched 'Dubai Economic Agenda D33' that seeks to double the size of Dubai's economy by 2033, establishing Dubai as one of the top 3 cities to invest, live and work in.

A MOSAIC OF OVER 200 NATIONALITIES, DUBAI PAINTS A VIBRANT PICTURE OF DIVERSITY.

With its expanding expat communities of around 80% of the population and as an emerging hub of entrepreneurship, Dubai is where the best global ideas converge. The city's vibrant cultural scene boasts world-class food, international art exhibitions and music concerts, and inspiring sports and fitness events.

A 20-MINUTE CITY

The city's 2040 Urban Master Plan includes building shops, schools, offices and recreation facilities within a 20-minute distance of new homes. The goal is to shorten lengthy commutes and foster the city's status as a liveable destination, calling it 'a 20-minute city'.

DUBAI'S SUSTAINABILITY COMMITMENT

HH Sheikh Mohammad Bin Rashid Al Maktoum, Vice President and Prime Minister of the UAE and Ruler of Dubai, launched the Dubai Clean Energy Strategy 2050, to make the city a green economy, setting an ambitious target of 75% clean energy by 2050.



“2033 WILL MARK 200 YEARS
SINCE THE FOUNDATION OF DUBAI:
THE YEAR IN WHICH DUBAI WILL BE
THE MOST IMPORTANT GLOBAL
BUSINESS CENTRE, AND BY THEN
WE WOULD HAVE COMPLETED
THE DUBAI ECONOMIC AGENDA 2033.”

His Highness Sheikh Mohammed bin Rashid Al Maktoum
Vice President and Prime Minister of the UAE and Ruler of Dubai



THE CANVAS

Nestled amidst the glistening waters, Dubai Islands is an exquisite creation by Nakheel, that resonates with sophistication and exclusivity. This breathtaking wonder hosts iconic projects and visionary architecture, catering to the most discerning tastes and reflecting Dubai's grandeur.



DUBAI ISLANDS



Dubai Islands will be an exquisite community of 5 islands spanning across a total area of 17 sq. kms. With each island offering its own luxury living experiences, cultural hubs, beach clubs and sport beaches, Dubai Islands is going to be an address of palatial residences. With its easy access to the city and airport through road bridges and sea transport - it's designed to enhance the wellbeing and lifestyle of its residents and visitors.

DEIRA CORNICHE AREA

16 minutes

DOWNTOWN (BURJ KHALIFA)

18 minutes

DUBAI INTERNATIONAL AIRPORT

22 minutes

BURJ AL ARAB

30 minutes

PALM JUMEIRAH

30 minutes

DUBAI MARINA

30 minutes

DUBAI ISLANDS PLAN

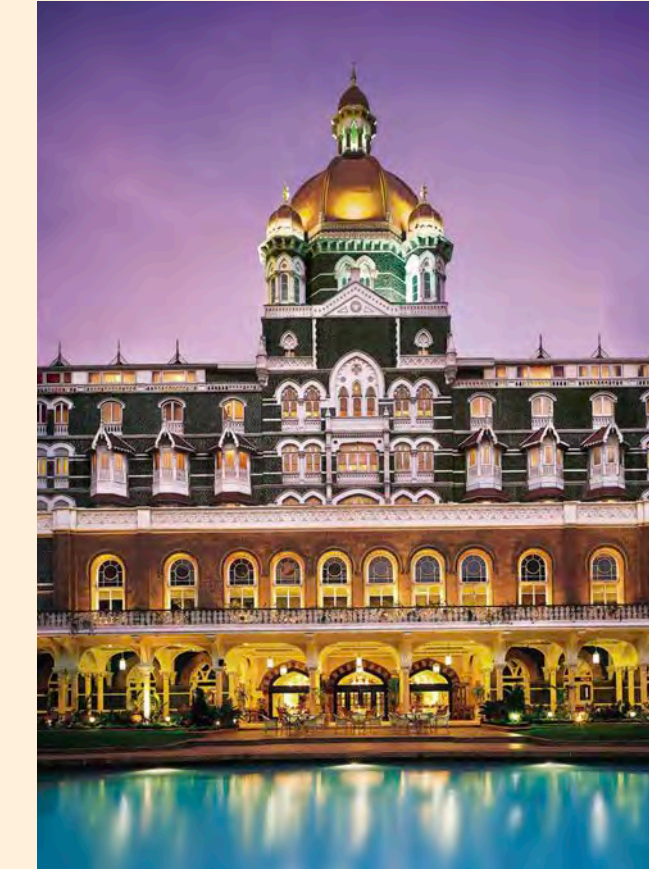
- OVER 80 HOTELS - INCLUDING LUXURY AND WELLNESS RESORTS
- FAMILY AND ECO-CONSCIOUS HOTELS
- 20 KMS OF BEACHES
- APPROXIMATELY 2 SQ KMS OF PARKS AND OPEN SPACES
- PREMIUM GOLF COURSES OVERLOOKING THE ARABIAN GULF



THE JOURNEY OF LUXURY
IS INCOMPLETE WITHOUT
A STEP INTO THE ROYAL ERA
AND ITS INDULGENCE.



THE Taj



THE LEGACY OF TAJ

Taj, India's strongest hospitality icon, is embedded deeply in heritage and timeless sophistication. London, Dubai or India - every Taj property narrates a story of grandeur, crafted for those with a taste for the extraordinary.

Over 90 hotels in 55 countries

Ranked as World's Strongest Hotel Brand
by Brand Finance Hotels 50 Report 2022

Original majestic palaces,
landmark hotels, idyllic resorts and natural safari lodges



A LEGACY OF OVER

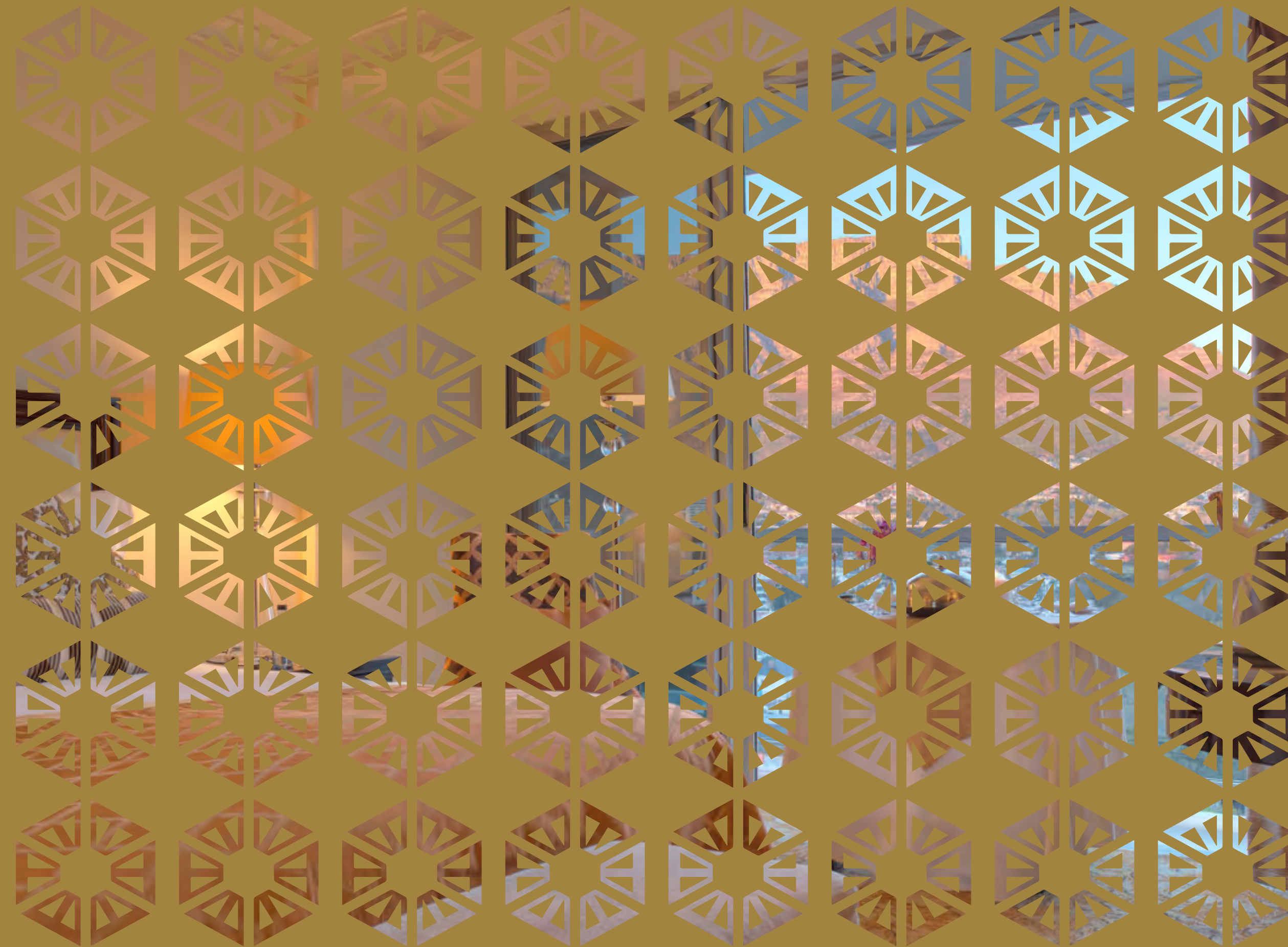
116

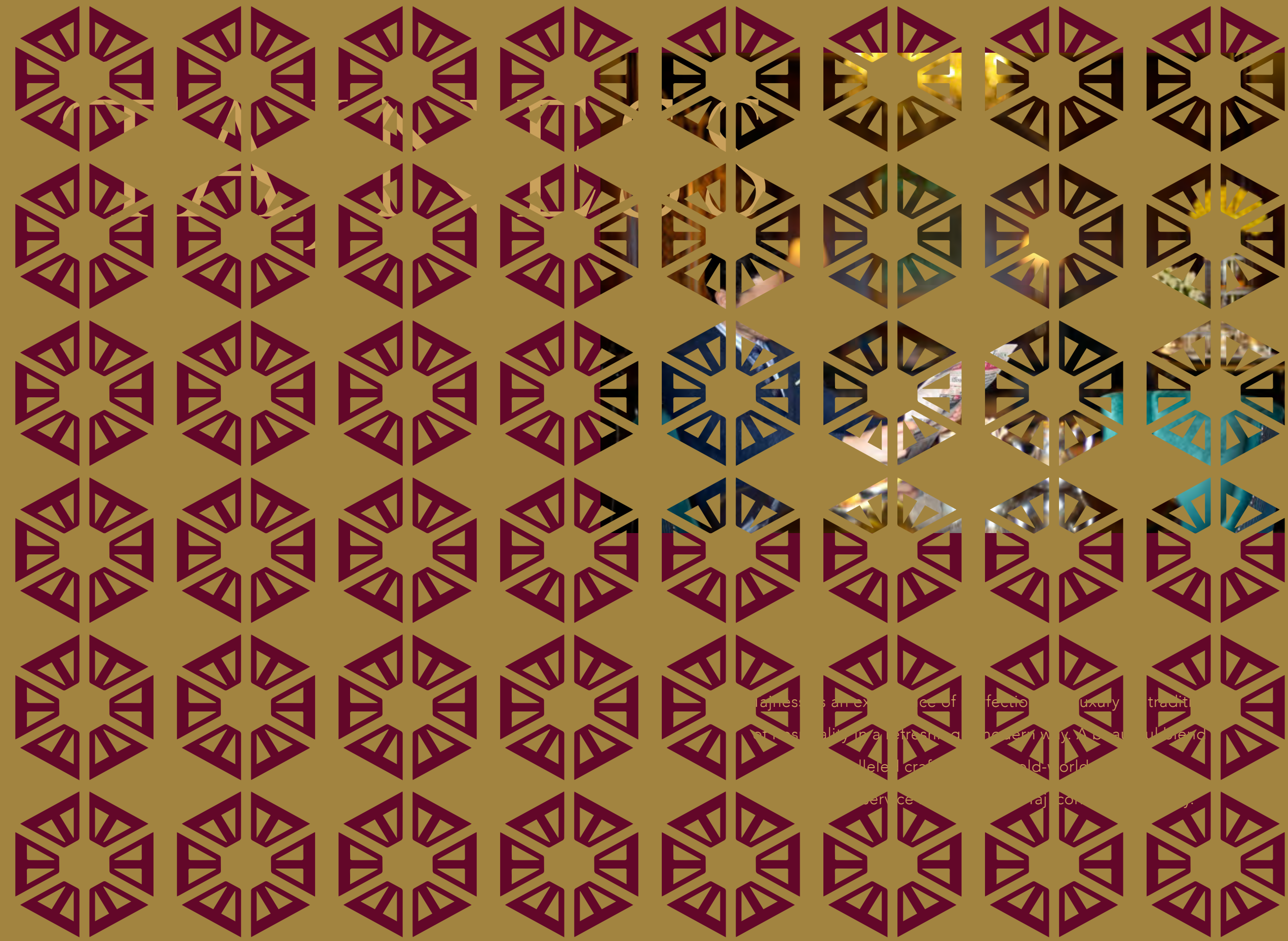
YEARS

THE TajNESS



'Tajness' is an experience of perfection and luxury - a tradition of hospitality in a refreshingly modern way. A beautiful blend of unparalleled craftsmanship, old-world charm and best-in-class service is what makes Taj iconic in every way.



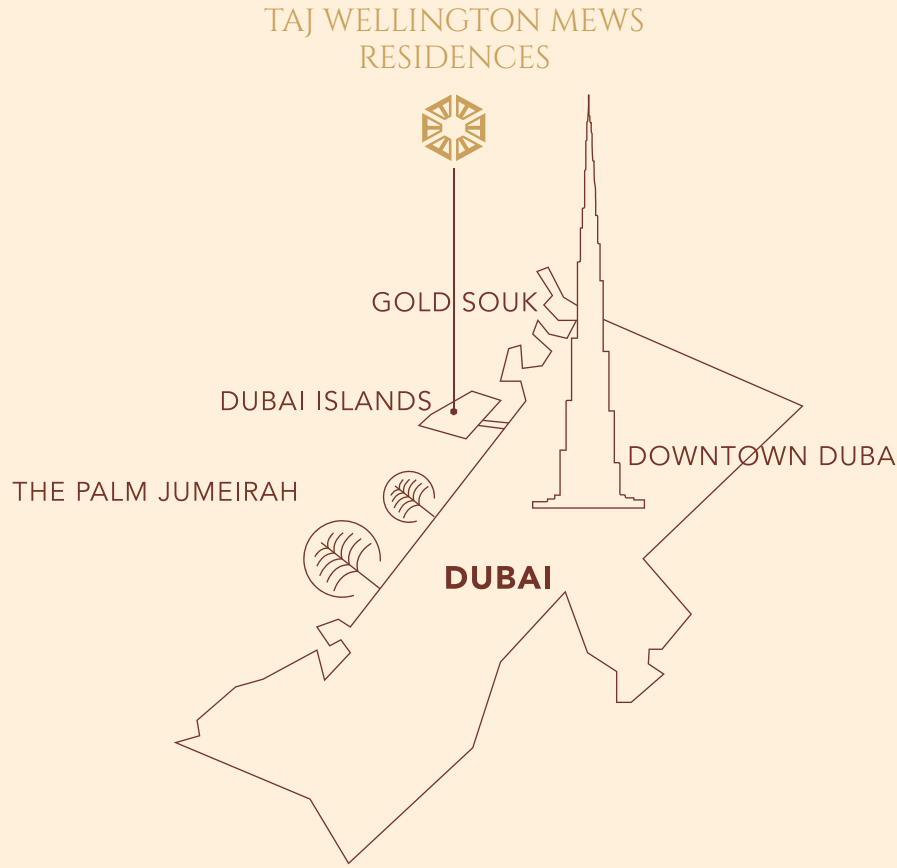


PREPARE TO IMMERSE YOURSELF
IN THE EPITOME OF LUXURY
AND SOPHISTICATION.
HERE'S WHERE THE BEST OF DUBAI
AND TAJ COMES TOGETHER.



Taj Wellington Mews Residences, Dubai Islands, an ultra-premium residential complex in the heart of Dubai, transcends the ordinary and ushers in a new era of high-end living.

The fully furnished units exude impeccable design and specifications that cater to the most discerning of tastes. With a select offering of just 116 exclusive units, including 1, 2, and 3 BHK apartments, these residences create spaces as exceptional as you are, and redefines fine living.



TAJ WELLINGTON MEWS
RESIDENCES



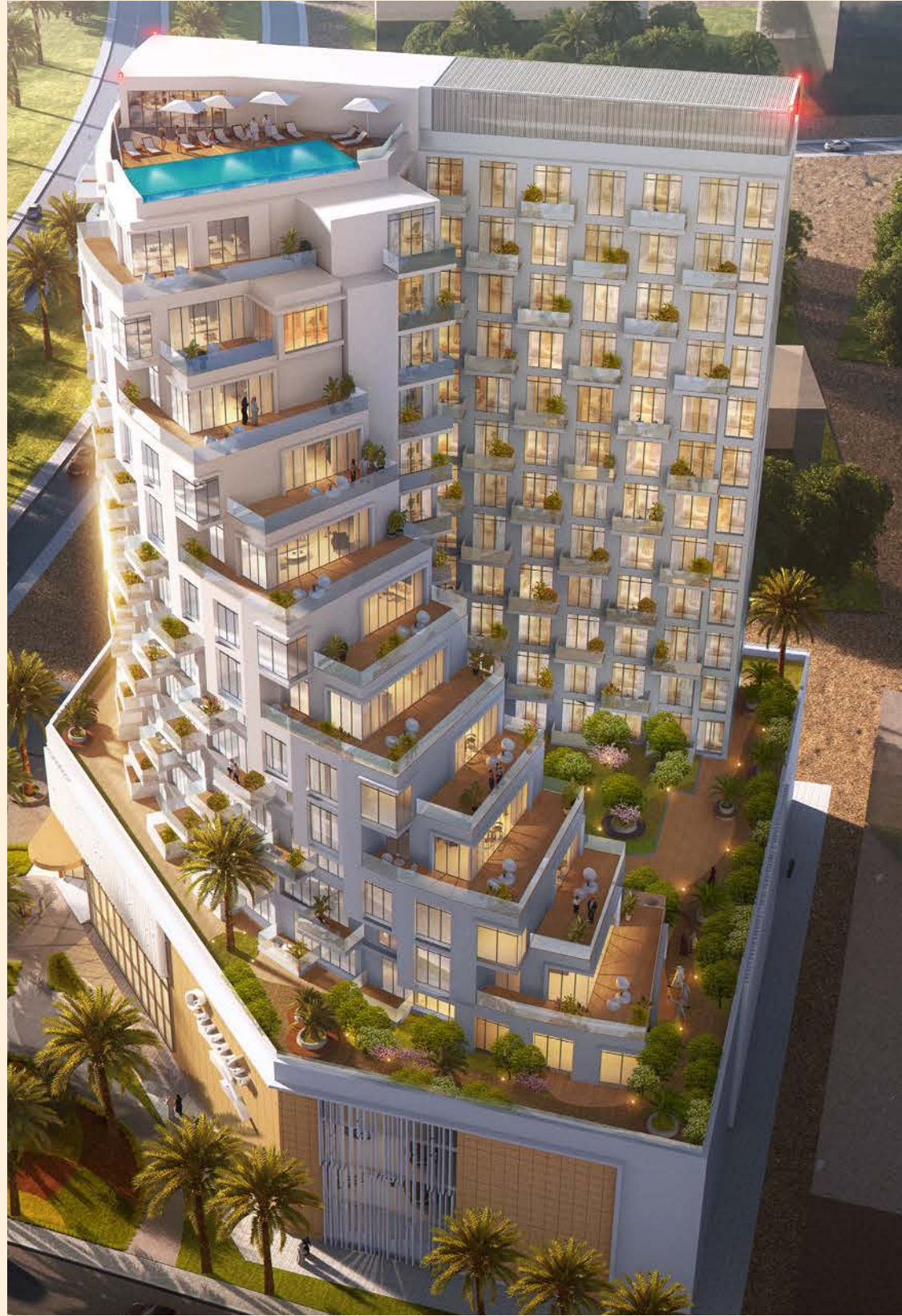
A CHOICE BEYOND COMPARE

Taj Wellington Mews Residences, Dubai Islands, luxury isn't a mere word; it's a way of being. What sets it apart, is an exclusive partnership with the globally renowned Taj Group.

As a resident, you'll revel in exclusive privileges, including access to Taj's prestigious hospitality brand loyalty programs, offering you discounted and, at times, complimentary stays across their illustrious global network.



One of the most distinctive features of Taj Wellington Mews Residences is its innovative cascading building design, ensuring that an astounding 98% of the apartments offer breathtaking sea views.



Taj Wellington Mews Residences, Dubai Islands, represents the fourth long-stay product of its kind globally for Taj and the very first in Dubai. With a growing demand among High Net Worth Individuals (HNI) for homes that emphasize privacy, security, luxurious amenities, and the essence of hospitality, these residences stand as the pinnacle of high-end living.

In addition, these branded residences offer a unique value proposition, commanding an average premium of 30% over non-branded properties in the immediate market.



IT TAKES VISIONARIES TO CREATE
A LEGACY AND FUTURE THAT
TRANSCENDS THE ORDINARY.





CG Corp | Global®

CHAUDHARY GROUP (CG)
IS A POWERHOUSE OF CHANGE AND POSSIBILITIES.

WHAT STARTED IN 1935 HAS TODAY BECOME A CORPORATION
OF BUSINESSES ACROSS VARIOUS SECTORS.

STAINLESS STEEL, DEPARTMENTAL ARCADE, TRADE,
FOOD, ELECTRONICS, POLY-FIBER, FINANCE, POWER, INSURANCE,
REALTY, EDUCATION, CEMENT, TELECOM AND HOSPITALITY



The Farm At San Benito, Wellness Resort, Philippines

202 COMPANIES

261 BRANDS IN THE GLOBAL MARKET

26,580 EMPLOYEES AROUND 32 COUNTRIES

Headquartered in Kathmandu, it is the first and only multinational
Nepalese company to be recognized by Forbes Asia magazine.



With its own hospitality
management company,
'Concept Hospitality',
CG Hospitality operates
a full suite of hotel and
resort brands, ranging
from deluxe hotels,
apartment, boutique hotels
to timeshare properties,
delivering quintessential
experiential vacations.



The fontenay Hotel, Hamburg

JOHN R HARRIS AND PARTNERS

With 330 professional designers and specialists, 10 global design studios, and 50 years of experience, John R Harris and Partners are the creative minds behind the architectural excellence of Taj Wellington Mews, Dubai Islands. Their expertise spans across Europe and the Middle East, ensuring that our development is a masterpiece of design and innovation.

