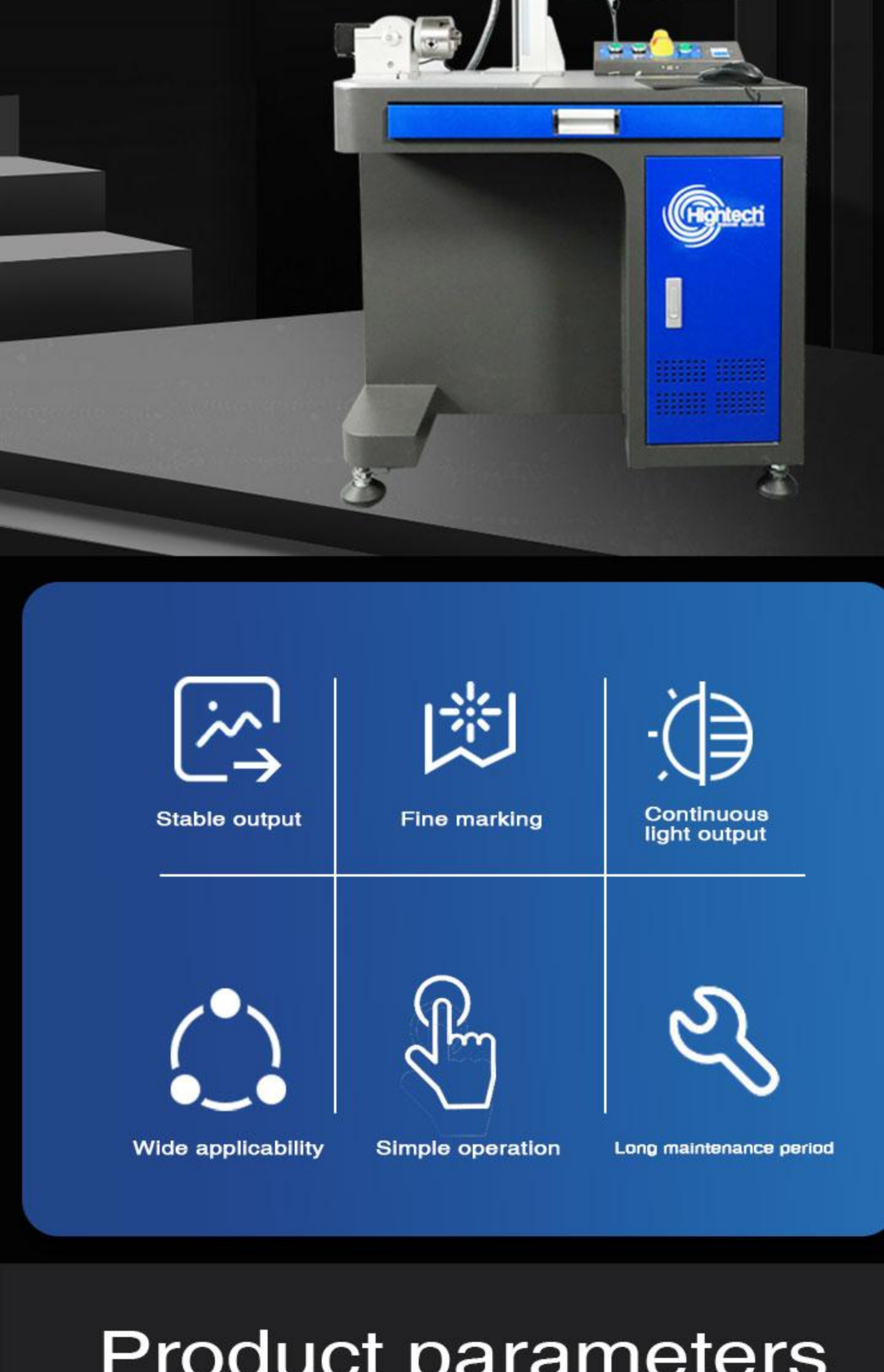
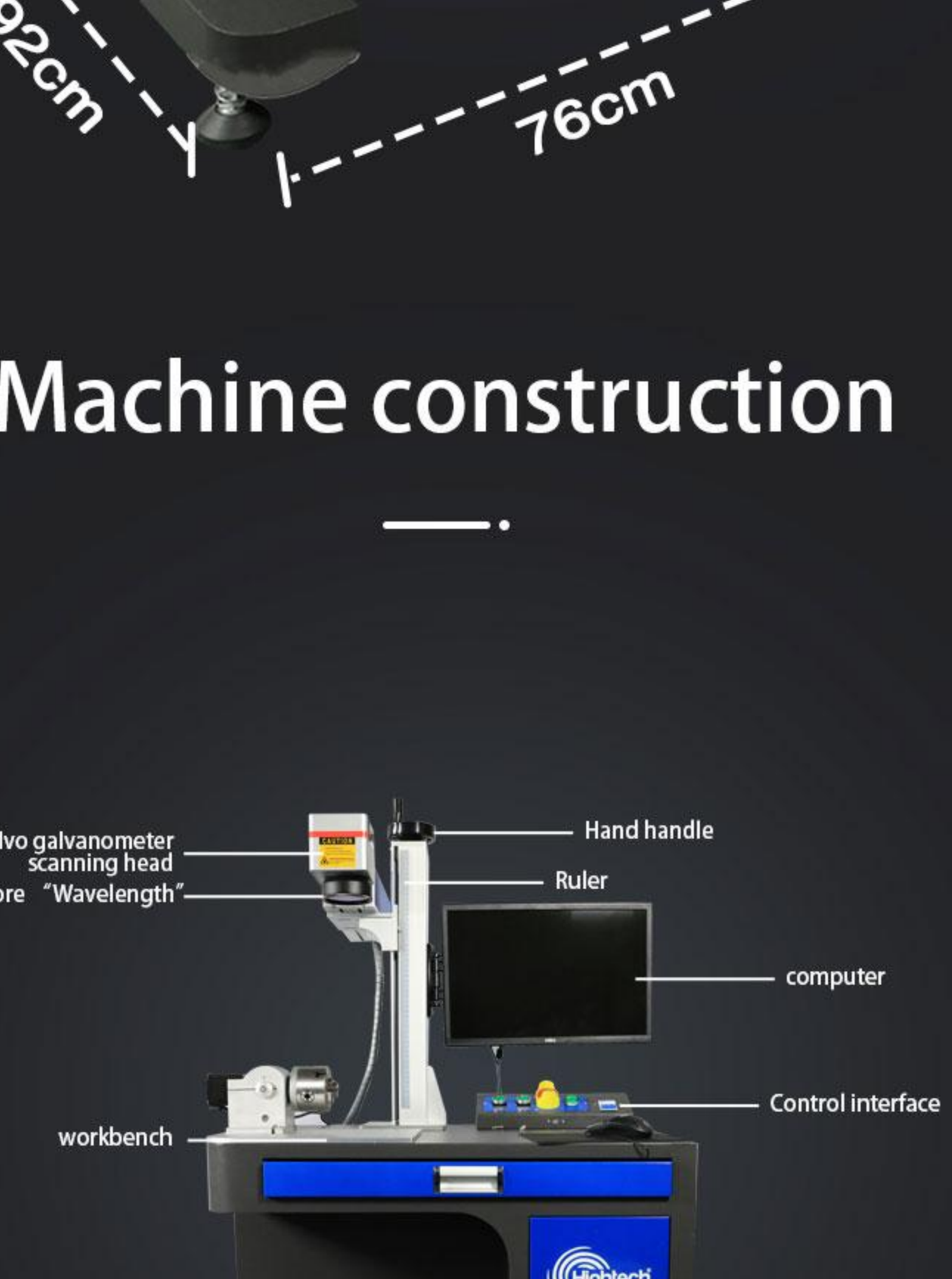


# Fiber Laser Marking machine

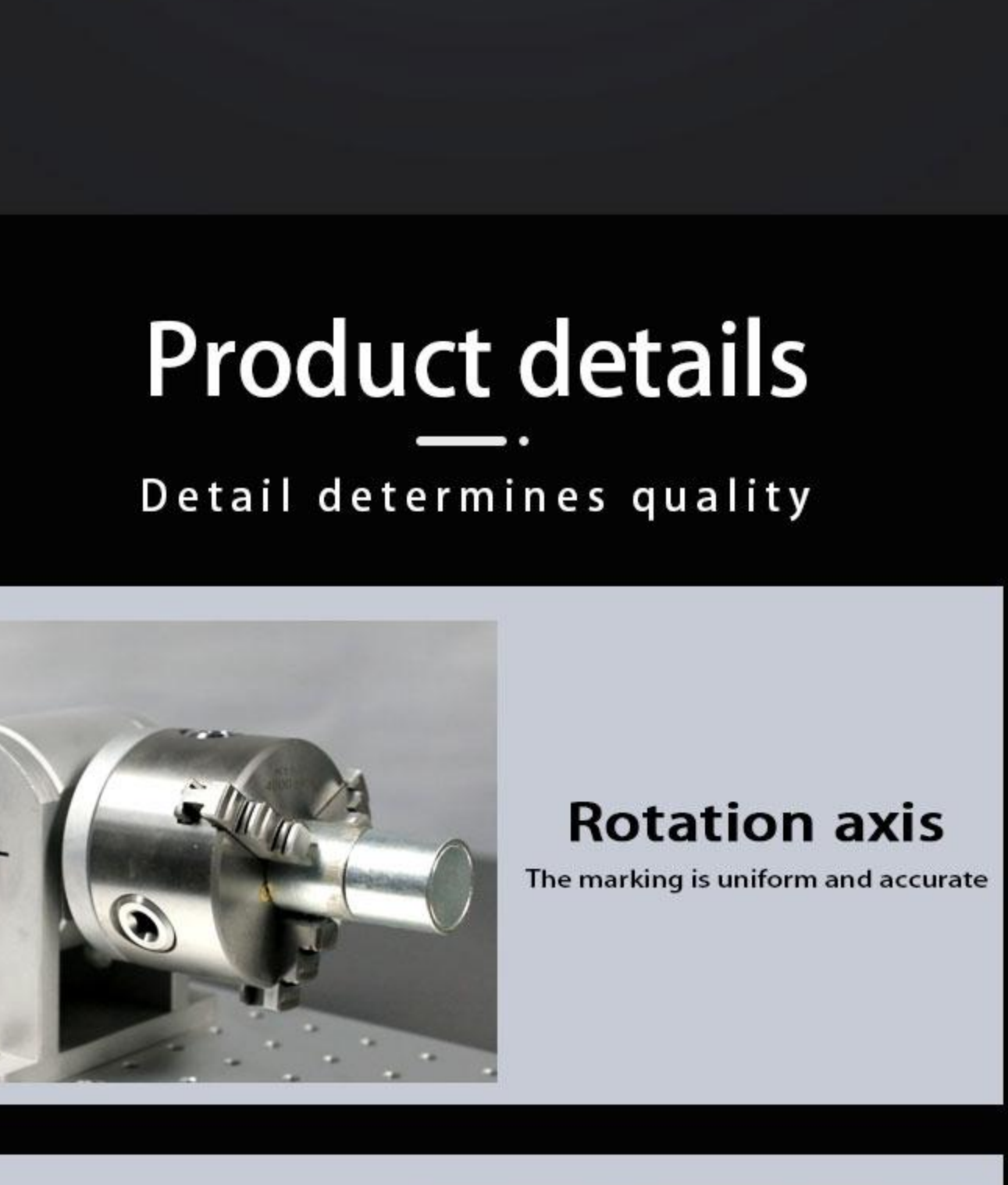


Stable output	Fine marking	Continuous light output
Wide applicability	Simple operation	Long maintenance period

## Product parameters



## Machine construction

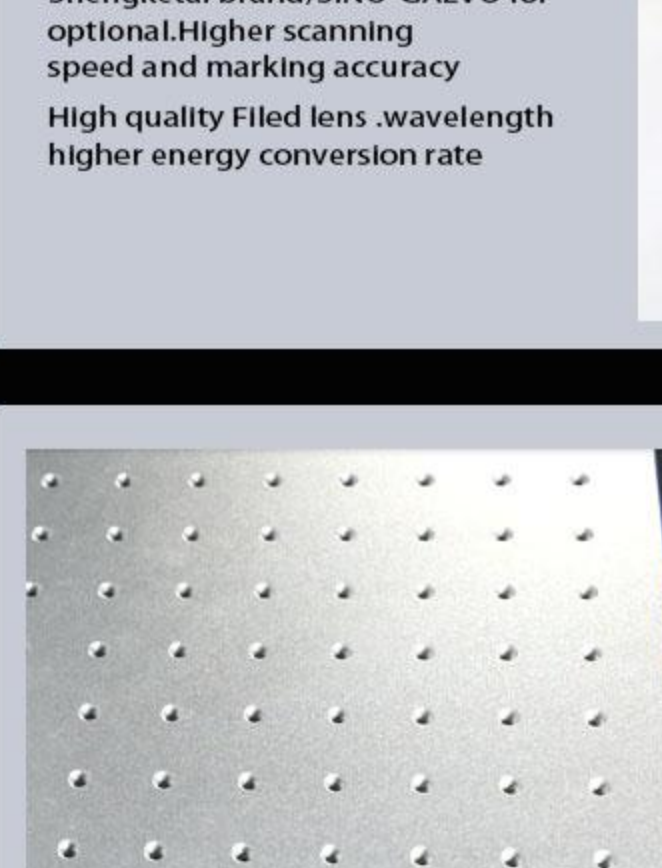


## Product details

Detail determines quality



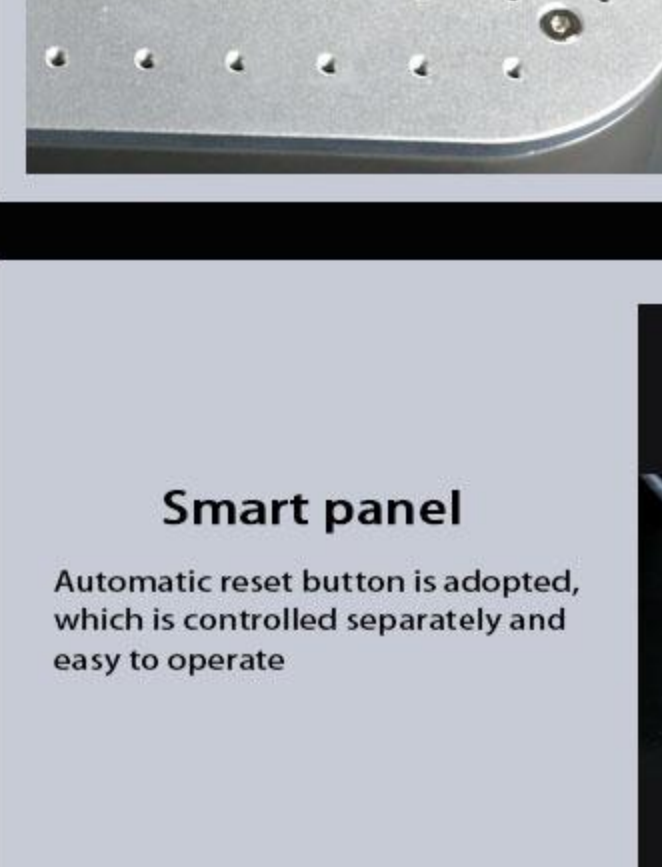
**Rotation axis**  
The marking is uniform and accurate



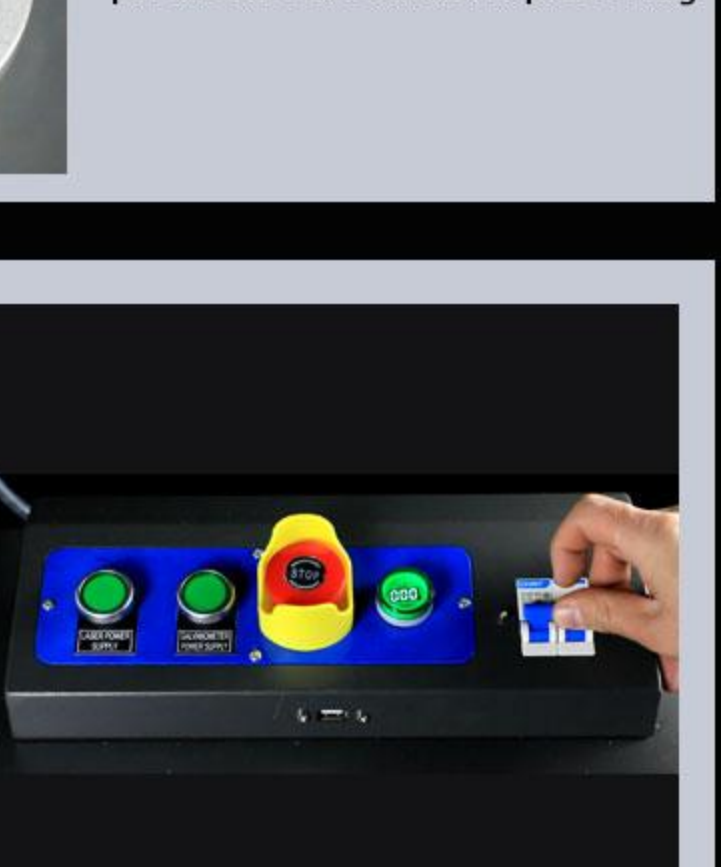
**High precision ruler**  
The manual remote lever with high-quality and high-precision design is adopted to ensure flexible adjustment in the process of use. It is suitable for high-frequency activities. The scale scale is clear, accurate and convenient to use



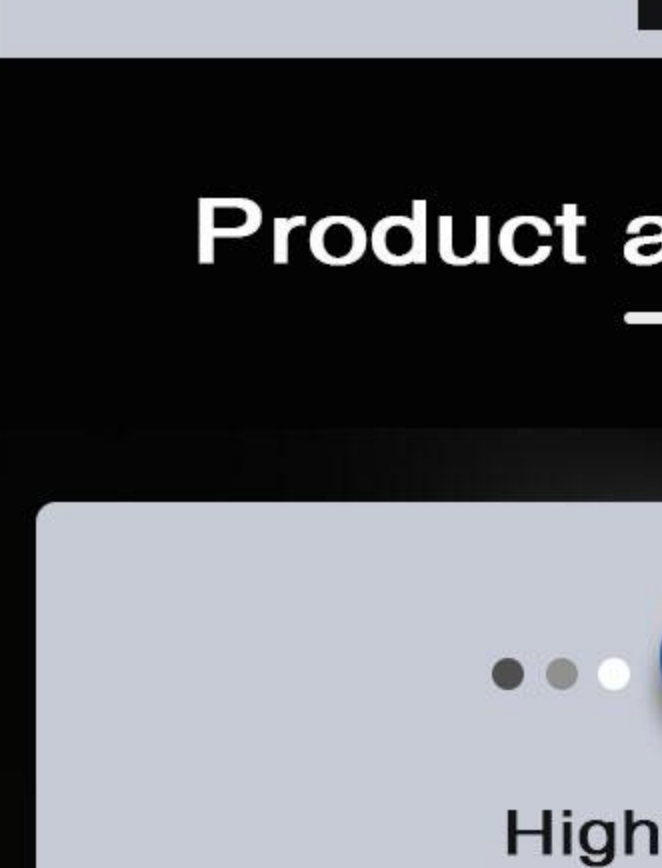
**Raycus laser source**  
with more than 100,000 hours lifetime. Laser source Raycus/MAX fiber laser source for your optional



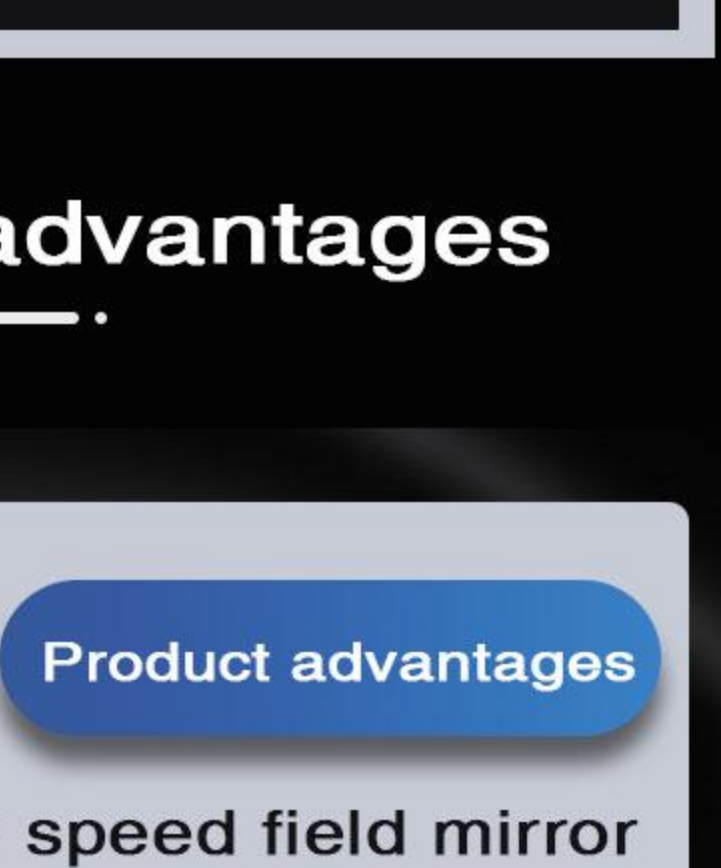
**Scene / galvanometer**  
Galvanometer scanning head, Shengketal brand/SINO-GALVO for optional. Higher scanning speed and marking accuracy  
High quality Filled lens, wavelength higher energy conversion rate



**Working platform**  
Porous positioning arrangement, compact structure and flexible adjustment. The location of the product is convenient for processing



**Smart panel**  
Automatic reset button is adopted, which is controlled separately and easy to operate



## Product advantages

**Product advantages**

**High speed field mirror**  
Strong light transmittance, small spot, imported lens, strong laser, deeper scale

**Product advantages**

**One machine with multiple materials**  
Many materials can be used and widely used

brass gold	silver jewelry	plastic
ceramics	rubber materials	copper
iron	aluminum	steel

Ability of engraving on iron, steel, aluminum ,copper, brass gold and silver jewelry , ceramics ,plastic and rubber materials

## Applicable show

auto accessories marking	tobacco products marking
beer bottle marking	ring marking
electronic products marking	scale engraving

## Our advantages

Clear marking	Long preservation
---------------	-------------------