

HT-R3

CNC engraving machine



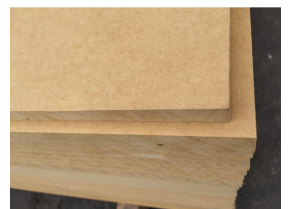
Product Application



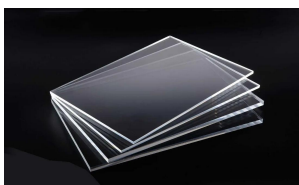
PVC



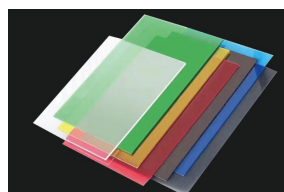
Wood



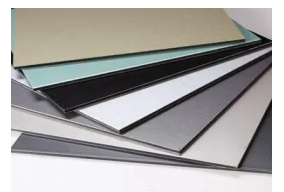
MDF



Acrylic Sheets



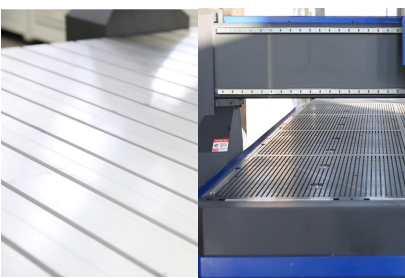
Polycarbonate sheet



ACP

Machine Configuration

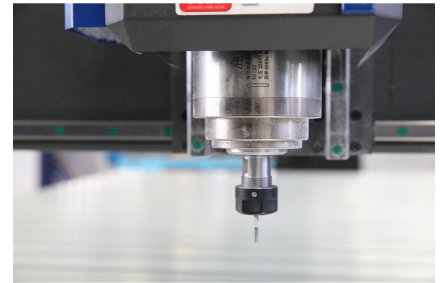
- 1) **Robust Structure:** Industrial design machine tools and classic design ensure smooth operation, preventing motor distortion during high-speed processing. The seamlessly welded bed base made of high-quality steel pipes guarantees stability, and the XY axis guide rail base undergoes precise processing for long service life without deformation.
- 2) **High-Torque Spindle Motor:** Equipped with a 3.2 kW water-cooled spindle, ensuring high-speed cutting while maintaining product accuracy.
- 3) **LEADSHINE Drive System:** The XYZ axis drive motor utilizes the LEADSHINE high-speed drive system with a 450A drive, offering large torque, extended machine tool service life, high precision, fast speed, and stable performance.
- 4) **Precision Mechanical Transmission:** XY axis mechanical transmission features 2.0 square linear guide rail, and the Z axis utilizes Taiwan TBI ball screw, ensuring precise cutting.
- 5) **Fine Grinding Precision Rack and Pinion Transmission:** The three axes employ 1.25 mold three-side fine grinding precision rack and pinion transmission, ensuring smooth high-speed operation.
- 6) **Board Control System:** Adopts a board control system with multi-window expansion, standard industrial-grade design, good compatibility with various CAD/CAM design software, enabling fast and smooth three-dimensional carving and cutting in multiple processing levels.
- 7) **Advanced Frequency Conversion System:** Utilizes a 3.0KW high-performance frequency converter and military high-frequency electronic anti-interference filtering system, ensuring stable electrical appliance operation without electromagnetic interference waves affecting machine tool performance.
- 8) **T-Slot Countertop:** Features a standard aluminum alloy T-slot countertop, maintenance-free, capable of clamping any material.
- 9) **Durable Shielded Cable:** Standard configuration includes a special high-flexibility shielded cable for machine tools, capable of reciprocating up to 8 million times. Soft metal cable sheath prevents cable damage due to pressure and collision.
- 10) **Precision XY Axis Guide Rail:** Incorporates a high-precision machine-tooled XY axis guide rail base for precise hole positioning and mill grooves, ensuring a long service life with no deformation.



Two different machine tool structures, one is aluminum profile and the other has adsorption function



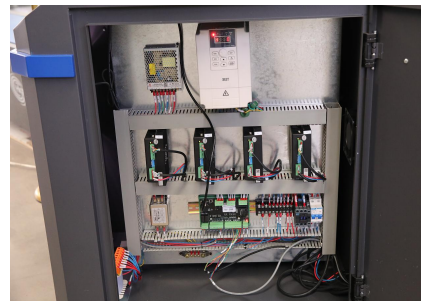
XY axis guide rail



3.2 kw water-cooled spindle



Taiwan TBI ball screw



Board control system



vacuum systems

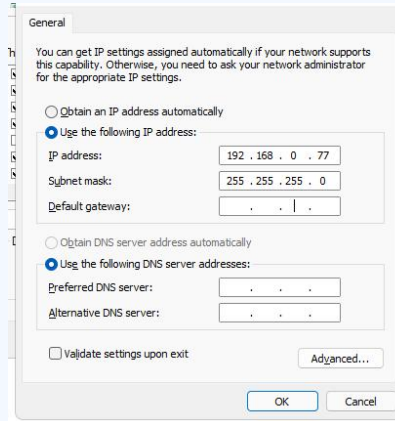
Using steps and processing features

Step 1: Starting up



Rotate the red button first, then click the green button, Link computer, Set parameters

Step 2: Change IP address



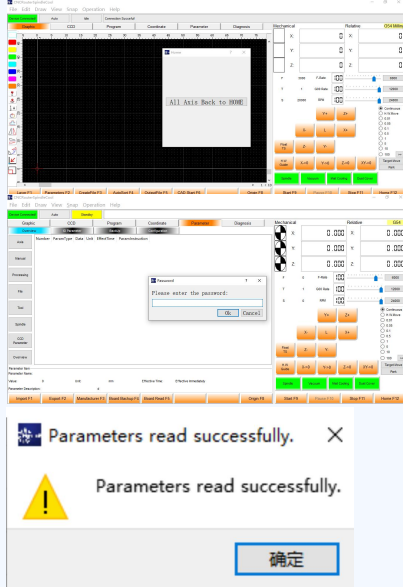
Click on the computer's control panel - Network and Internet - View network status and tasks - Properties - Microsoft Network Client - General - Change IP address to 192.168.0.77, subnet mask is 255.255.255.0

Step 3: Install software



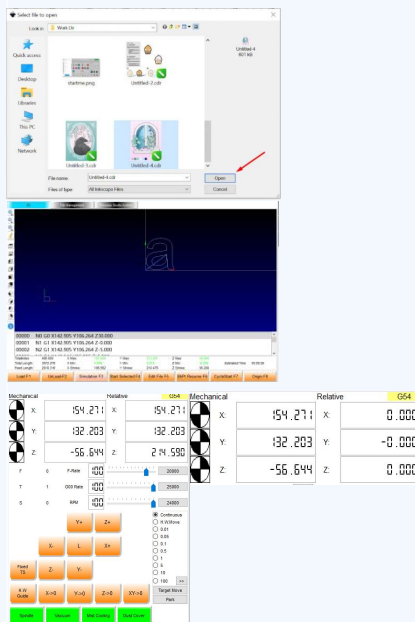
Extract file package - Double click software installation - Select language - Change installation path - Install

Step 4: Install software



A11 Axis Back to HOME, Enter password 1992, Parameters read successfully, Restart

Step 5: Import File



Import files, set parameters software, set mechanical coordinates to the work piece origin, Machine operation

Step 6: Machine operation



After setting the parameters, the machine starts carving and the production is completed

Technical Parameters

Model	HT-R3 CNC Engraving Machine	
Product specifications:	HT-1325-R3	HT-1530-R3
Working Size	1300*2500mm	1500*3000mm
Machine Dimensions	2100*3100*1650	2280*3650*1700
Feeding Height	190mm	
Duplicate Targeting	±0.025mm	
Spindle Power	3.2KW water-cooled spindle	
Working Table	aluminum alloy table	
Operating Voltage	220V/50Hz	
Operating Mode	Shenzhen Leadshine High-Speed Drive	
Transmission Mode	Grinding gear rack and square guide rail	
Software operating environment and instructions	Win7 system, 32 bit, G-code/HP-GL	
Tool Shank Diameter	Φ3.175 Φ4 Φ6 Φ12.7	
Shock absorption method	Earth-center shock-absorbing feet	
Components	French Schneider, CHNT	
Consumable Parts	Knives, knife holders, protective cloth	

Tool list

(NO)	(Name)	(Qty)	(Unit)
1	Work piece pressure plate	4	(PCS)
2	Wrenches 18-21	1	(PCS)
3	Wrenches 27-30	1	(PCS)
4	Water pump 3.5 meters	1	(PCS)
5	Clear bottom knife	1	(PCS)
6	4*17	1	(PCS)
7	3.175*22	1	(PCS)
8	3.175mm chuck	1	(PCS)
9	4mm chuck	1	(PCS)
10	6mm chuck	1	(PCS)
11	12.7mm chuck	1	(PCS)
12	Small network cable 3m	1	(PCS)
13	Power line	1	(PCS)



Service Promise:

We adhere to the customer-centered strategy and provide customers with satisfactory pre-sales and after-sales services.

Training, maintenance and other sales services

1. Pre-sales service

- Before signing a contract, our professional sales manager will provide you with careful and

detailed answers so that you can fully understand the various parameters and functions of our machines.

2. Provide customers with free online training or local technical services:

- Common operations of machines and software;
- Basic maintenance and cleaning;
- Solutions to common software and hardware

failures; 3. Warranty:

- Two-year warranty for the entire machine.
- Spare parts will be replaced free of charge during the warranty period, and the freight will be borne by you.
- Lifetime software

upgrades. 4. Others:

- Free lifetime technical consultation.
- Respond to customer FAQs within 24 hours.
- After the warranty period, users also enjoy lifetime service and are responsible for the related expenses themselves.

Policies and policies may vary depending on the country, please consult with your local agent or distributor.

Company strength display

Company and factory



Company and factory



Our team



Our team



HIGHTECH Team at the exhibition site



HIGHTECH Team at the exhibition site

