

HTN1 Letter Bending Machine



Introduction



HTN1
BENDING MACHINE

- ✓ FLAT ALUMINUM
- ✓ CHANNELUME
- ✓ SINGLE EDGE
- ✓ EXTRUSION PROFILE

3rd GENERATION OF TECHNOLOGY
NEW DEVELOPMENTS
UPGRADED SOFTWARE
MORE EFFICIENCY



HTN1 Bending Machine Suitable Materials: Letterume, Single Edge Aluminum Coils, Aluminum Extrusion profile and Flat Aluminum Coils.

HTN1 Letter Bending Machine, manufactured by HIGHTECH and available exclusively from HIGHTECH Corp., is a line of automated channel letter bending machines known for their exceptional reliability and precision. The HTN1 Letter Bending Machine is equipped with the most advanced technology, making it the preferred choice for sign makers. It can complete the process of bending returns 15% to 25% faster than the closest competitors, and it also reduces hand finishing time by an additional 30% or more.

HTN1 Letter Bending Machine is a powerful channel letter bending machine available for use. It is suitable for working with materials such as Letterume, Single Edge Aluminum, Aluminum Extrusion profiles, and Flat Aluminum. The machine can handle materials with a height ranging from 10mm to 160mm and a thickness of 0.3mm to 1.2mm. It greatly simplifies the process of bending aluminum returns, making it quick and effortless.

If a significant portion of your business involves fabricating traditional or reverse channel letters, the HTN1 Letter Bending Machine is your ideal choice. It has gained popularity worldwide, We are a global company that sells and exports products to over 100 countries worldwide. With our 10 years of experience in manufacturing and servicing these systems, along with our dedicated team of technicians, we have established the industry's most reliable service and support infrastructure

Using steps and processing features

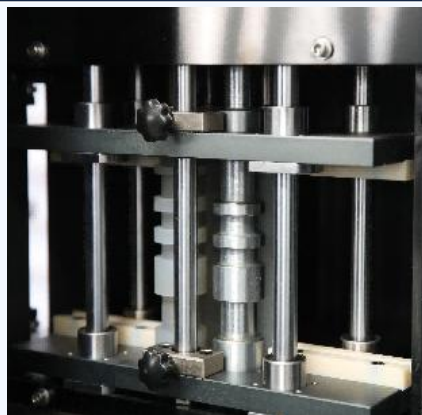
Step 1: Material placement



Feeding Platform:

- To begin, place the material on the platform
- The height can be flexibly adjusted up and down
- The independent support design can withstand greater material weight.

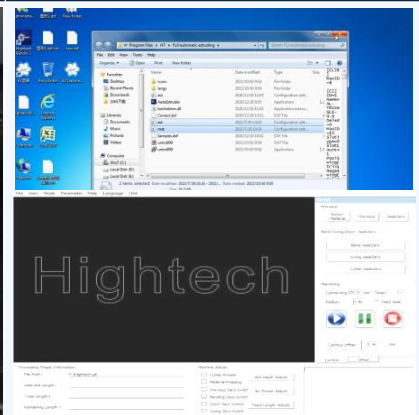
Step 2: Feeding materials



Rolling Feeding Method:

- Fixing material device, freely adjustable
- Encoder counting of materials allows for more accurate feeding
- Different grooves, feeding different types of materials
- Thicker rollers, larger radius, faster speed

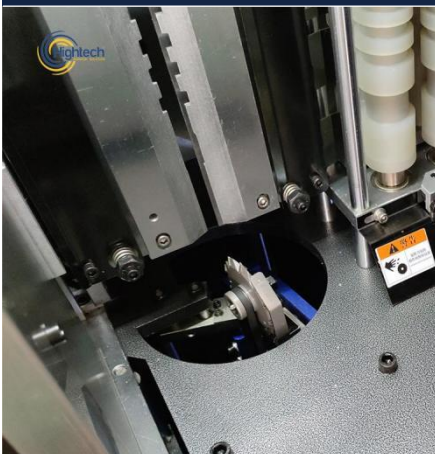
Step 3: Debug data



Operating System:

- Independently developed by HIGHTECH
- Cutting and bending commissioning
- Easy to learn and operate
- Accurate data and error-free cutting
- Debugging data can be saved independently, use it directly next time

Step 4: Cutting materials



Milling Cutter Slotting Method:

- High strength alloy milling cutter
- Software automatically recognizes glyph angles, precise grooves and tracks
- 360 degree rotation capability, front and rear cutting
- Imported from Germany, high speed/high precision/more durable

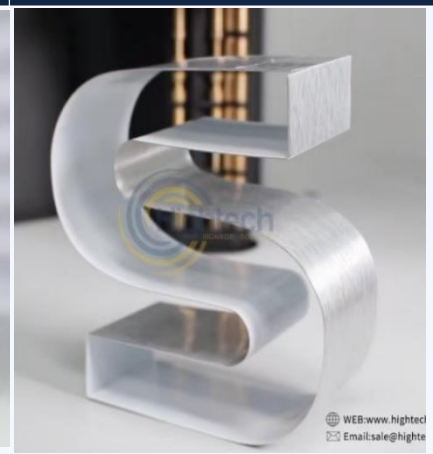
Step 5: Bending materials



Double Alternate Grooved Cylinder Bending System:

- Double-row copper shaft design, no damage to materials
- Flexible edge materials and extruded profiles
- Minimum bending radius 3mm
- With voltage stabilizer support, bending is more stable
- Arc benders can be individually customized according to the material

Step 6: Letter formation

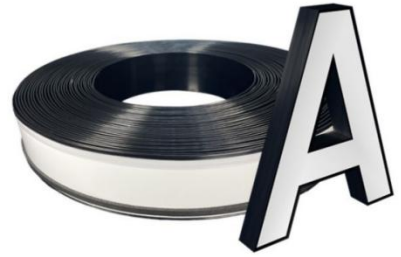
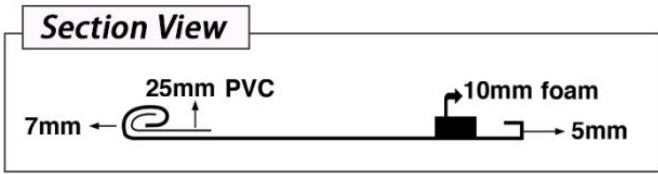


HTN1 Letter Bending Machine:

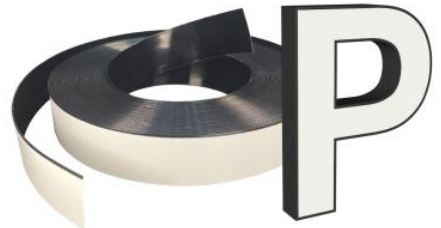
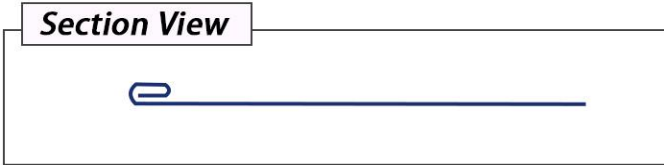
- It can make various types of aluminum letters.
- Flat aluminum returns
 - Channel letter with sponge and pvc
 - DF aluminum strips
 - Extrusion profile
 - Compared with manual production, it greatly improves work efficiency and promotes customer business growth.

Suitable Materials

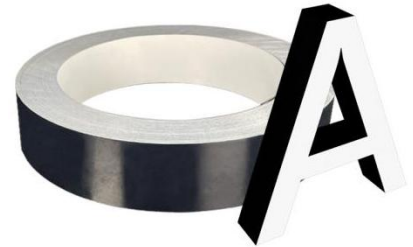
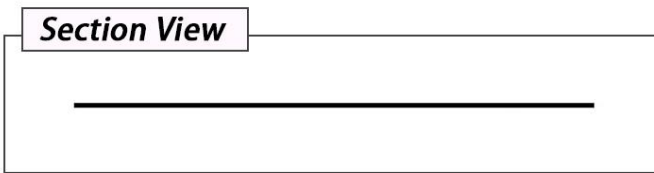
Material 1: Letterume



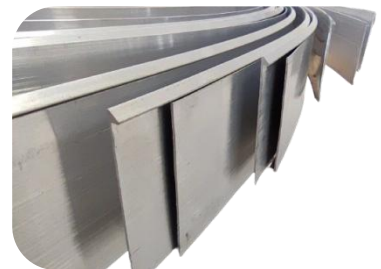
Material 2: Single Edge Aluminum



Material 3: Flat Aluminum



Material 4: Aluminum Extrusion profile



Applications and finished products:



Technical Parameters

Model	HTN1
Slotting System:	Milling cutter
Bending System:	Double alternate grooved cylinder
Feeding System:	Rolling feeding device
Cutting depth calibration:	By software
Suitable Material:	Letterume, Single Edge, Aluminum Extrusion profile and flat aluminum
Height of Material :	10~160 mm
Material Thickness:	0.3 ~1.2 mm
Accuracy :	+0.1mm
Input File Format :	*PLT, *dxf
Power:	110V/220V
Source:	0.6 m3/min
Size:	1380*760*1540mm
Weight:	350kg

Machines and accessories

HTN1 Letter bending machine, Computer, host, keyboard, dongle, toolbox, Cylindrical plug, 306 small U limit, Lift/lower lever limit, Knife grains, Cutter belt, Upper and lower belts



Service Promise:

We prioritize a customer-centered approach and strive to provide excellent pre-sales and after-sales services to ensure customer satisfaction. Our range of services includes:

Pre-sales Service:

- Our knowledgeable sales managers will offer detailed answers to your inquiries, helping you understand the machine's parameters and functions before signing a contract.
- We have a separate machine showroom and are ready for online demos and demonstrations at your convenient date and time

Shipment Service:

- We have a complete Door-to-Door route. We will first transport the machine to a local warehouse close to you, and then deliver it to your door from the warehouse. During this period we will keep in communication with you and confirm the location of the machine.
- Timeliness: Depending on the city, we will provide you with an approximate transportation time, and we will confirm the delivery time for you after the machine arrives at the warehouse. We will keep in touch with you during this period
- No need to do anything yourself, just wait for delivery.

Training and Technical Services:

- We provide free online training or local technical services to customers.
- Training covers essential machine and software operations, basic maintenance and cleaning, as well as troubleshooting common software and hardware issues.

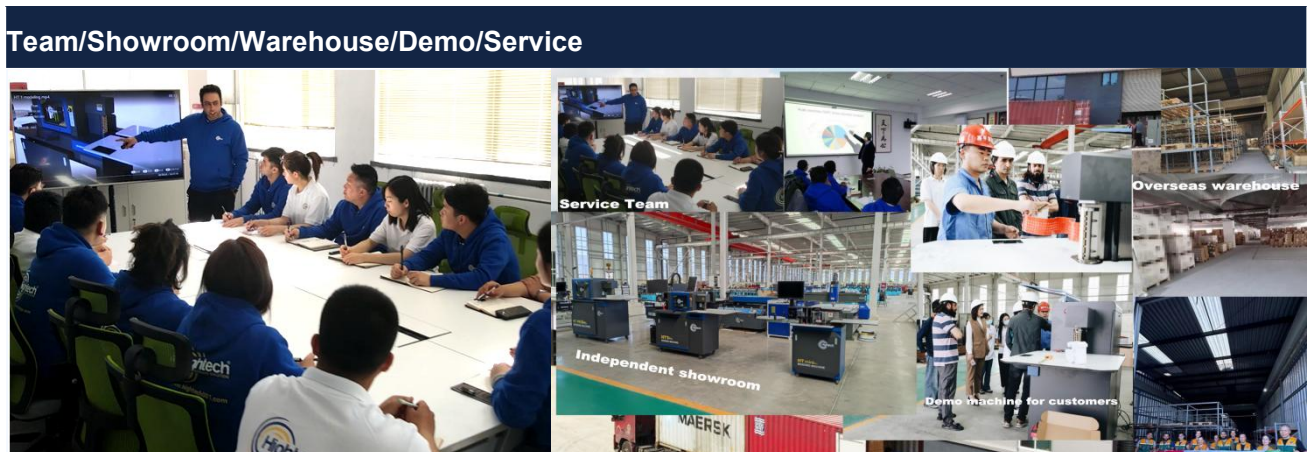
Warranty:

- The entire machine is covered by a two-year warranty.
- During the warranty period, we offer free replacement of spare parts, with the customer responsible for freight costs.
- Lifetime software upgrades are provided to ensure continuous improvement.

Additional Services:

- We offer free lifetime technical consultation, addressing any questions or concerns you may have.
- Our dedicated support team responds to customer inquiries within 24 hours.
- After the warranty period, users can still access our lifetime service, with associated expenses being borne by the customer.

Policies and policies may vary depending on the country, please consult with your local agent or distributor.



Company strength display

Company and factory



Company and factory



Packaging and Loading



Packaging and Loading



Hightech Promise:

Hightech Company, by using the best domestic and overseas raw materials and utilizing of highest technology of domestic and foreign specialists has been always focusing on quality improvement.

Customer satisfaction is our eternal pursuit. We will spare no effort to provide the best products and services for customers all over the world.

Exhibitions and customers

HIGHTECH Team at the exhibition site

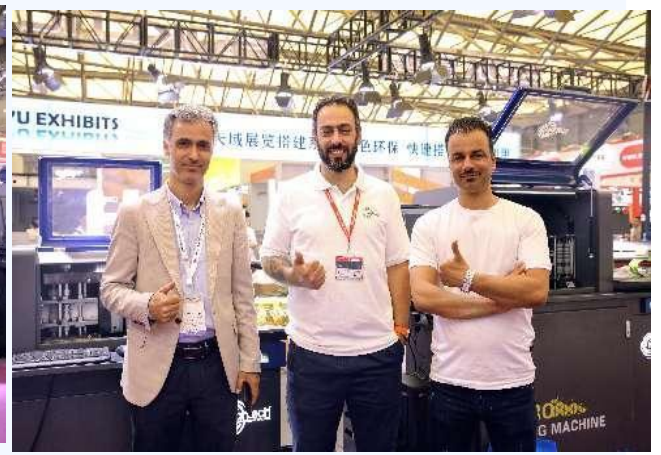


HIGHTECH Team at the exhibition site



Our Customers





Start Now:

Action, and from now on we will be connected, it greatly improves work efficiency and promotes customer business growth.

Enhance your signage with the HTN1 Channel Letter bender today!

