



TRAINING TIMES

JANUARY, FEBRUARY, MARCH 2026

Contact Information

Training/ Professional Development Coordinator

Susan Fordham
334-749-8400 ext. 9222
susan.fordham@ccrc-alabama.org

Child Care Consultant/ Parent Educator

Jessica Segrest
334-749-8400 ext. 9224
jessica.segrest@ccrc-alabama.org

Child Care Consultant

Lauren Bailey
334-749-8400 ext. 9229
lauren.bailey@ccrc-alabama.org

Infant/Toddler Specialist

Latilia Gullatte
334-749-8400 ext. 9225
latilia.gullatte@ccrc-alabama.org

Child Care/ FCCH Consultant

DiAhanna Allen
334-749-8400 ext. 9230
diahanna.allen@ccrc-alabama.org

Child Care Consultant

Ashley Bierman
334-749-8400 ext. 9223
ashley.bierman@ccrc-alabama.org

Child Care Consultant

Amanda Baker
amanda.baker@ccrc-alabama.org
334-749-8400 ext. 9231

INSIDE THE ISSUE

Updates/Pathways	1
Provider Resources	2-3
Career Develop Opportunities	4
Special Points of Interest	5
CPR & 1st Aid	5
Monthly Calendars	6-8
Online Policies & Registration	9
Season Activities	10
Training Classes	11-20
Registration Form	21-22
Training Legend	23

What is Alabama Pathways?

If you are familiar with Alabama Pathways and would like a refresher on how to use the system, or new to Alabama Pathways, online training is being offered. Alabama Pathways is a free online resource for early childhood professionals working in childcare facilities. The professional development system addresses the training and education needs of caregivers and teachers in the field of early childhood and school-age care. The goal of Alabama Pathways is to provide a path to support and advance the best practices of those who care for and teach children from birth through 12 years.

Participants must register through Alabama Pathways. The website address is alabamapathways.org

For more information, contact Susan Fordham at 334-749-8400 EXT. 9222 or susan.fordham@ccrc-alabama.org

Tuesday, March 10th 10am-12pm

Online through Zoom

Health and Safety Saturday

Whether you're new to childcare or a seasoned provider, this hands-on session will strengthen your confidence in creating safe, healthy, and high-quality environments for every child in your care. Expect practical tips, clear guidance, supportive discussion—and a chance to connect with other dedicated providers who share your passion for early childhood excellence.

CCDF #1 Infectious Disease

CCDF #2 SIDS & Safe Sleep

CCDF #3 Administrative of Medication

CCDF #4 Food and Allergies Reaction

CCDF #10 First Aid & CPR

Saturday, March 28th 8am-1:30 pm

Child Care Resource Center

Professional Development Technical Assistance

Our staff members are available to help meet your needs. The following services are available by appointment.

- Technical Assistance with planning for training needs
- Technical Assistance for Providers seeking a CDA credential
- Information regarding scholarships for CDA credential and 2-year degrees
- Information regarding opening a Child Care Center or a Family Child Care Home

To make an appointment, contact Susan Fordham at (334)749-8400

EST.9222 or susan.fordham@ccrc-alabama.org

Onsite Training

Do you have specific training needs for your staff?

Our childcare consultants are available to bring trainings and technical assistance to individual childcare programs. For more information regarding on-site training, contact

Susan Fordham at 334-749-8400 ext. 9222 or susan.fordham@ccrc-alabama.org

Family Child Care Home Activity/Storytime

CCRC staff are available to provide fun, developmentally appropriate theme-based activities in family childcare homes. Each 1-hour session involves fun activities with the provider and children.

To schedule an activity time contact:

DiAhanna Allen @ ext. 9230

Classroom Clinics

CCRC staff provide fun, developmentally appropriate activities in your classroom. Each 30-minute session includes activities related to a theme requested by the classroom teacher. Classroom clinics are available for all age-groups.

To schedule an activity time contact:

Ashley Bierman @ ext. 9223

Amanda Baker @ ext. 9231

Lauren Bailey @ ext. 9229

Storytime

This fun program is designed for children who are 2-5 years old and school-age. Fifteen to thirty minutes of stories-- reading, storytelling, puppets, with a follow-up extension activity given to the classroom teacher.

To schedule an activity time contact:

Ashley Bierman @ ext. 9223

Amanda Baker @ ext. 9231

Lauren Bailey @ ext. 9229

Parent Lunch & Learn

These parent education sessions are for families in your program. Providers can choose from a variety of topics. Each session lasts approximately 1-hour, usually during a scheduled lunch time. However, our parent educators can accommodate different times of the day, depending on the center's needs.

To schedule a Lunch & Learn contact Susan Fordham ext. 9222

Severe Weather Policy

In case of severe weather, CCRC will notify participants registered for a scheduled training by phone and email as soon as the decision to cancel the training is made. The cancellation notice will also be posted on our Facebook page.



LENDING LIBRARY

Our Lending Library is now open for check-outs!
Library Hours are Monday—Friday, 8am—3:45pm.
Accommodations can be made for 4pm—6pm.

To check out items providers can:

1. Browse our online catalog to choose items wanted for check out.
2. Specify a subject or theme, and our consultants will pull items from which you can choose to check out.
3. Browse through our on-site lending library.

For more information, please call Susan Fordham at 334-749-8400 ext. 9222

Resources available for check out include:

- Teacher Resource Books • Children's Books
- Activity Kits • CD's

Providers can view online the contents of our library as well as the current availability of an item.

1. To access our Resource Library Catalog:
2. Go to: <https://ccrc-alabama.follettdestiny.com>
3. Click on the link Child Care Resource Center.
4. You will be taken to the Home Page where you will click on Catalog.

ON THE ROAD

- We serve Chambers, Lee, Macon, Russell, and Tallapoosa counties.
- Available resources will include: Die-cuts; CD's; Teacher Activity Books; Children's Books; Activity Kits

To register for the Family Resource Van to visit your program, please contact: Amanda Baker at 334-749-8400 ext. 9231.



PROVIDER WORK ROOM

Our die-cut room is open Monday—Friday, 8am—3:45pm . Accommodations can be made for 4pm—6pm.

* Lamination can be dropped off between 8:30 am—3:45pm Monday—Friday. **Please bring the items in a plastic bag labeled with the center or FCCH information, and provider's name/phone number.**

* We will laminate it for you and call you when it can be picked up. Please allow up to two weeks for us to have your lamination ready.

For more information, please call
Susan Fordham at 334-749-8400 ext. 9222

**** CCRC is not responsible for damages incurred by CCRC equipment such as the laminator, wax machine, or die cuts. ****

Activity Packets for Providers

We are excited to introduce Activity Packs for Child Care Centers and Family Child Care Homes. Each month we will have ideas for fun, new activities to help engage your students each month. If you would like a packet mailed to your program, email for FCCH/GCCH DiAhanna (diahanna.allen@ccrc-alabama.org) or for Centers Lauren Bailey (lauren.bailey@ccrc-alabama.org)

Below is listed the theme for each month and deadline to request them.

Month	Theme	Deadline to request	Date to Mail Out
February	Valentine' Day, Friendship, Dental Health	January 8th	January 15th
March	St. Patrick, Recycling, Weather	February 5th	February 12th
April	Flowers, Weather, Easter	March 5th	March 12th



Child Development Credential

The Child Development Associate™ (CDA) National Credential represents the crossroad where education and experience meet. This crossroad epitomizes competence and is a pathway to learning best teaching practices for many early educators:

- A lead teacher who already holds an academic degree but needs to gain hands-on practical skills and competency in early care and education.
- An assistant teacher with experience, but little formal education.
- A family childcare provider who must improve the quality of his/her setting to meet accreditation requirements.
- A high school student interested in pursuing a career in working with young children.

The CDA helps early educators meet current state and national professional requirements. CDA recipients are competent practitioners who value vital knowledge and skills and formal education. The CDA is portable, recognized in all 50 states, the District of Columbia, U.S. territories, community colleges, school districts, and the military. For more information about the CDA credential, contact Susan Fordham at 334-749-8400 ext. 9222 or susan.fordham@ccrc-alabama.org



SOUTHERN UNION
STATE COMMUNITY COLLEGE

SUSCC Child Development Program

The Associate in Applied Science Degree Program satisfies the mandate of the Head Start Act. This program of study also meets the Alabama state minimum standard qualification for director, program director or teacher in a licensed childcare center. The Child Development Certificate, which meets the requirements for director of a center, program director or teacher in a licensed childcare center is available as well. The Child Development Award of Achievement meets the education component requirements for students who want to obtain a Child Development Associate credential (CDA).

For more information contact Sandy Little, 334-745-6487, ext. 5330 or slittle@suscc.edu

Available Scholarships to Assist in Obtaining Your Goals



T.E.A.C.H. Early Childhood® ALABAMA is a scholarship program that was developed to increase the level of education and effectiveness of early learning professionals by making the educational process more affordable, increasing wages, and reducing staff turnover rates. Scholarships are currently offered for the CDA (Child Development Associate) Assessment Fee, Associate Degrees in Child Development and Early Care and Education, and Bachelor Degrees in Child Development and Early Care and Education.

Contact Mariah Scarver at 334-271-0304 or teach@apcteam.org for more information



The Leadership in Child Care Scholarship provides financial assistance (tuition and selected fees) to qualified child care professionals working in legally operating child care facilities. The Scholarship is designed for the eligible recipient to obtain a Child Development Associate (CDA) Credential, Short-Term Certificate, Certificate, Associate in Applied Science/Technology Degree in Child Development/Early Care and Education at a designated institution in the ACCS. The Scholarship also offers a Bachelor of Science Degree in Early Childhood Education at Athens.

Contact Virginia Frazer at 334-293-4552 or virginia.frazer@accs.edu for more information

**CPR/First Aid****Kay Rombokas****Healthy Child Care Alabama Nurse**Wednesday, January 28th9am-1pmWednesday, February 25th9am-1pmWednesday, March 25th9am-1pm

To register contact Kay Rombokas at 334-756-0758 or
kay.rombokas@adph.state.al.us

Class location: Child Care Resource Center. Maximum number of
 participants for each class is 6 participants.

For Macon & Russell Counties please contact Renea Gilliland Phone
 Number: 334-566-2860 EXT. 4

Closure Dates

January 1st.....New Year's Day

January 19thMartin Luther/Robert Lee Day

February 16thPresidents Day

**Looky
Here!**

APT ONLINE CLASSES

**Early Childhood Online Facilitated Course**

On-Demand Courses

Participants will continue to register for all APT online training opportunities
 through APT's website,

<https://aptv.org/education/learn-online/>.

Registration for Fall facilitated classes opens December 8th, 2025
 at <https://aptv.org/education/learn-online/>

Winter 2026 Training Titles

- January 5th-February 22nd--> Alabama Early Learning Guidelines (AELG) Online
- January 5th -January 26th-->ACEs: Understanding and Preventing Adverse Childhood Experiences
- January 5th-January 26th → New! Introduction to the CDA Credential
- February 2nd-February 23rd→Healthy Habits for Healthy Start: CCDF 1,8, & 13
- February 2nd-February 23rd → Essentials of High Quality Early Care and Education



JANUARY 2026



Thursday

Friday

Saturday

1
Office Closed!!

2

3

New Year

8
Building Strong Little Hands: Implementing Fine Motor Journals in Preschool

9

10

15

16

17

22

APT: Right On TIME

23

24

29

APT: Moving with the Brain in Mind

30

31

Wednesday

Tuesday

Monday

Sunday

7
ALL ONLINE CLASS BEGIN

6
Tom Copeland: Money Management & Retirement

5

4

14

13
AELG 1: Orientation

12

11

21

20
AELG 2: Observations

19

18

28

CPR

27
AELG 3: The Role of the Parents and Caregivers

26

25

Office Closed!!

FEBRUARY 2026

Sunday

Monday

Tuesday

Wednesday

Thursday

Friday

Saturday

1

2

Mix, Mash Learn,
Simple Classroom
Cooking

3

AELG 4: Self-
Concept & Emotional
Development

4

5

APT: Bridging the
GAP: Family
Engagement

6

7

8

9

10

AELG 5: Social
Development

11

12

Creating a Positive
Reading Culture in
the Classroom

13

14

Valentine's day

15

16

OFFICE
CLOSED!

17

AELG 6: Language
Development &
Literacy

18

19

20

21

Workshop
Saturday

22

23

24

AELG 7: Physical
Development

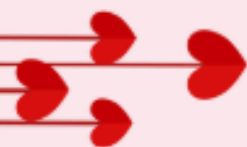
25

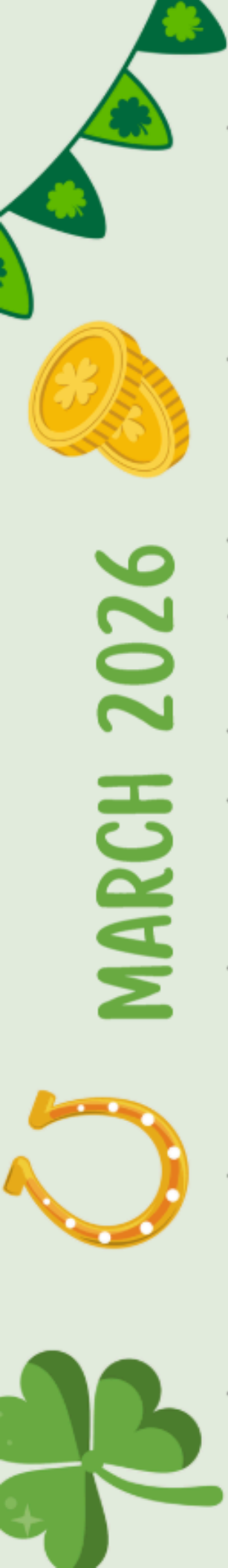
26

From Babble to
Conversation:
Guiding Language
Milestones

27

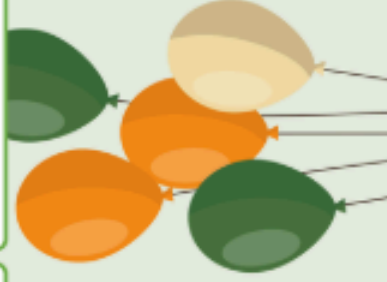
28





MARCH 2026

Sunday	Monday	Tuesday	Wednesday	Thursday	Friday	Saturday
1	2	3 AELG 8: Cognitive Development	4	5 APT: Play, Learn, and Discover through Science Experiments	6	7
8	9	10 AELG 9: Putting in All Together for AL Children AL PATHWAYS 10-12	11	12 The Power of Praise	13	14
15	16	17 St. Patrick's Day	18 Director's Forum Baby Doll Circle Time (CHAMBER COUNTY) ALL ONLINE CLASSES END!	19	20	21
22	23	24 Calm, Connected and in Control	25 CPR	26 Connecting Generations in the Workplace	27	28 Health and Safety Saturday
29	30	31				





ONLINE Registration

All providers must register through their account with Alabama Pathways. For more information contact: Susan Fordham @ 334-749-8400 EST. 9222

For Online classes, providers can register through <https://ccrc-alabama.asapconnected.com/>

ONLINE Training

CCRC staff are excited to offer online virtual training sessions to our providers using Zoom Video and online courses through Moodle.

All participants must have a working email and internet access.

For Zoom sessions, you can join through a browser on your computer, from any desktop, laptop, or mobile device including iPads and tablets. Two business days before the class, you will receive an email with the link to access the Zoom Registration for the class. To join Zoom sessions using a cell phone or tablet, you will need to download the Zoom App.

Having trouble with how to access online registration and online trainings? Appointments can be made to help providers log in to their CCRC online registration accounts, as well as show how to join in our online trainings. Please contact Lauren Bailey at 334-749-8400 ext. 9229 or lauren.bailey@ccrc-alabama.org for more information or to schedule an appointment.

How our Online Classes Work

Online classes opens Wednesday, January 7th at 8 am and closes Wednesday, March 18th at midnight. This is a work-at-your-own-pace training and is available between the dates provided.

- **Register on ASAP** – you sign up for classes on ASAP but the classes themselves are on a completely different website. We will email you the link once you sign up on ASAP.
- **Provide a Working Email Address** – we will email you your login information, course details, and certificates.
- **Check your Spam Folder** – sometimes our emails go to spam or junk mail.
- **3-5 Business Days** – Everything is done manually by us. So we will sometimes need a few days to get you into the class and get certificates to you.
- **Paperwork** – As usual, please be sure to do the paperwork to get your certificate: Demographics, Pre & Post Test, & Evaluation. We also check all work to make sure participation assignments are completed.
- **Certificate** – When you have finished a class, email the instructor to let them know so they can check your work and send you a certificate. Each instructor's email address will be listed under the last section of the class at the end.

* It may take up to 3-5 business days for us to get you your certificate, but we will always put the correct day of completion on it.



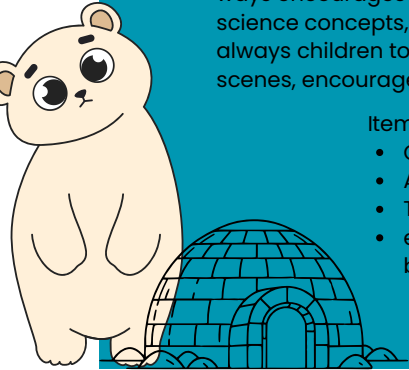
Seasonal Activities

January Sensory Bin

TA Polar Play Sensory Bin supports children's development in multiple ways encourages cause and effect, promotes problem solving, early science concepts, finger muscles, and improve hand eye coordination. It always children to engage in pretend play with animals and winter scenes, encourages storytelling and imaginative thinking.

Items to Include:

- Cotton balls, blue/clear water beads, ice cubes or pom-poms
- Arctic animals (Polar bears, penguins, seals)
- Tools (Cups, funnels, scoops, tongs, spoons)
- extra (mini pine trees, cotton pads for icebergs, mini-igloo or small blocks)

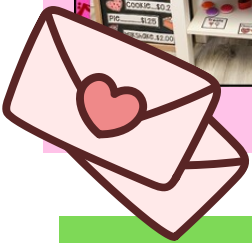


February dramatic play

The Sweetheart Bakery is a Valentine-themed dramatic play setup where children pretend to bake, decorate, serve, and sell treats. It encourages creativity, language development, early math, and social skills—all while keeping learning fun and festive

Set Up:

- Transform the dramatic play center into a bakery
- Play dough cookies or felt treats, heart-shaped cookie cutters, aprons, chef hats, menus).
- Include play money, a cash register, paper bags, and baskets for "shopping".



March Build a Garden

The Spring Garden Building block activity invites children to design and construct their own gardens using blocks, artificial flowers, pots, and natural materials. This activity is developmentally appropriate because it supports key early learning skills such as problem-solving, spatial awareness, and fine motor development as children build and arrange their garden structures.

Materials:

- Wooden or foam blocks, Legos. small planks or ramps for raised beds
- artificial flowers, green pipe cleaners, small pots, flower buckets or containers
- small people figures, toy insects



WORKSHOP SATURDAY

FEBRUARY 21ST

8:30AM- 12:45PM

SOUTHERN UNION STATE COMMUNITY COLLEGE

MORE INFORMATION COMING SOON

Positive Power-Ups: Leveling Up Your Guidance Skills

Margaret Vollenweider

Lead Teacher, Auburn University Early Learning Center

Tired of feeling like a broken record? Ready to swap the scolding for superpowers? We'll talk about the benefits and use of positive phrasing and how it can make children more willing to listen! We're also kicking generic "Good Job!" praise to the curb and unlocking the magic of effective praise - the kind that actually builds confidence and sparks a growth mindset that will keep those children busy! **Hours Earned: 2**

Training Level	CCDF	DHR Performance Standards Area	CDA Subject Area	Alabama Pathways CKA	Target Age Group
intermediate	13	PDG	2,3,8	CGD, LEE	PRESCHOOL

Celebrating Unique Beginnings: Supporting Neurodivergent Infants, Toddlers, and Their Families with Evidence-Based Practices

Teresa Lewis BS. ECE., ITL-IV, PDS

This interactive session explores the early identification and support of neurodivergent infants and toddlers, focusing on practical, evidence-based strategies for families and professionals. Participants will gain an understanding of neurodiversity in early childhood, including signs of autism, ADHD, and sensory processing differences, while celebrating each child's unique developmental journey. **Hours Earned: 2**

Training Level	CCDF	DHR Performance Standards Area	CDA Subject Area	Alabama Pathways CKA	Target Age Group
Advanced	13,,20	CD	2,3,8	CGD, LEE	ALL

Alabama Early Learning Guidelines

This course consists of nine training sessions that are a guide for understanding child development and learning, and for implementing best practices in order to prepare children for success in school and in life. The Alabama Early Learning Guidelines Credential is an important milestone on the Career Lattice of Alabama Child Care and Education Professional Development System - Pathways to Quality Care and Education.

***The Alabama Early Learning Guidelines Credential will be awarded by
Alabama Department of Human Resources to those individuals who successfully complete the entire course.***

**YOU MUST ATTEND THE ORIENTATION SESSION IN ORDER TO
TAKE ANY OTHER SESSION.**

Where are the training sessions held?

Sessions will be held at:
Child Care Resource Center
510 S. 7th Street
Opelika, AL 36801

What Training credit is given?

Participants will receive a 2 hour training certificate for each of the sessions attended.

Who should participate?

Child Care Center Directors
Child Care Center Teachers
Family Child Care & Group Home Providers
Relative Care Providers & Parents

What are the benefits of taking this course?

Becoming familiar with the Early Learning Guidelines will allow you to utilize it as a valuable tool in planning and working with young children.

How can I register to participate?

Participants should register through CCRC's ASAP online registration.

****LAST DAY TO REGISTER IS ONE WEEK BEFORE EACH
SCHEDULED CLASS DATE****

For more information, contact Susan Fordham at
334-749-8400 ext. 9222 or email at
susan.fordham@ccrc-alabama.org

SCHEDULE OF SESSIONS

SESSION 1: ORIENTATION

Tuesday, January 13th
6:00-8:00PM @ CCRC

SESSION 2: OBSERVATIONS

Tuesday, January 20th
6:00-8:00PM @ CCRC

SESSION 3: THE ROLE OF THE PARENTS & Caregiver

Tuesday, January 27th
6:00-8:00PM @ CCRC

SESSION 4: SELF -CONCEPT & EMOTIONAL DEV.

Tuesday, February 3rd
6:00-8:00PM @ CCRC

SESSION 5: SOCIAL DEVELOPMENT

Tuesday, February 10th
6:00-8:00PM @ CCRC

SESSION 6: LANGUAGE DEVELOPMENT & LITERACY

Tuesday, February 17th
6:00-8:00 PM @ CCRC

SESSION 7: PHYSICAL DEVELOPMENT

Tuesday, February 24th
6:00-8:00PM @ CCRC

SESSION 8: COGNITIVE DEVELOPMENT

Tuesday, March 3rd
6:00-8:00PM @ CCRC

**SESSION 9: PUTTING IT ALL TOGETHER FOR
ALABAMA'S CHILDREN**

Tuesday, March 10th
6:00-8:00PM @ CCRC

Training Legend for Each Session

TRAINING LEVEL	Sessions	CCDF	DHR Alabama Minimum Standards Area	CDA SUBJECT AREA	Alabama Pathways Core Knowledge	TARGET GROUP AGE
Basic	1 2 3 4 5 6 7 8 9	13, 17, 20 13, 17, 18, 20 16, 20 13, 15, 17, 20 15, 17, 20 17, 20 5, 8, 13, 20 13, 17, 20 16, 18, 20	CD CD CCPF or QCCL CD or PDG CD or PDG LD CD or HSUP CD CCPF or QCCL	#8 #7 or #8 #4 or #6 #3 or #8 #3 or #8 #2 or #8 #1 or #2 #2 or #8 #4 or #6	CGD COA or CGD ICFC or PPD CGD or DIV CGD CGD CGD or HSN CGD ICFC or PPD	Infant, Toddler, and Preschool

New to Child Care

Welcome to Child Care Winter 2026

Lauren Bailey

Wednesday, January 7th - Wednesday, March 18th

Are you new to Child Care? Welcome! CCRC offers Welcome to Child Care as an on-demand online class! This Class is designed to meet the 12 hours of the Alabama Performance Standards requirements for **New Employees** in child care centers and group care homes. If you are newly employed or simply interested in working in the child care profession, this course is for you! **Hours Earned: 12**

Training Level	CCDF	DHR Performance Standards Area	CDA Subject Area	Alabama Pathways CKA	Target Age Group
Basic	1,2,11,13,15,17	ALL	1,2,3,4,6,8	ALL	ALL

Pre-Service Health and Safety Winter 2026

Lauren Bailey

Wednesday, January 7th - Wednesday, March 18th

This online course contains all CCDF health and safety training areas required by DHR for **New Employees** starting in child care. It contains 11 modules: Prevention & Control of Infectious Diseases, SIDS, Medication Administration, Food Allergies, Building Safety, Shaken Baby Syndrome, Emergency Preparedness, Hazardous Materials, Transportation, First Aid & CPR, and Child Abuse & Neglect. **Hours Earned: 11**

Training Level	CCDF	DHR Performance Standards Area	CDA Subject Area	Alabama Pathways CKA	Target Age Group
Basic	1-11	HSUP	1	HSN	ALL

Getting Started Winter 2026 (Family Child Care/Group Child Care Homes)

DiAhanna Allen

Wednesday, January 7th - Wednesday, March 18th

This 24-hour class is designed to meet all the requirements for the DHR Performance Standards training areas for Family Child Homes/ Group Child Care homes. If you are interested in establishing a childcare home this course will give you the basics. **Hours Earned: 24**

Training Level	CCDF	DHR Performance Standards Area	CDA Subject Area	Alabama Pathways CKA	Target Age Group
Basic	1,11,13,15,17	ALL	1,4,5,6,8	CGD, HSN, LEE,,ICFC, MA	ALL

Health, Safety and Universal Precaution

CCDF #8 Hazardous Materials

DiAhanna Allen

Wednesday, January 7th – Wednesday, March 18th

This training provides child care providers with essential knowledge on identifying, handling, and storing hazardous materials safely. Participants will learn practical strategies to maintain a hazard-free environment and protect the health and well-being of children and staff. **Hours Earned: 1**

Training Level	CCDF	DHR Performance Standards Area	CDA Subject Area	Alabama Pathways CKA	Target Age Group
Basic	8	HSUP	1	HSN	ALL

CCDF #9 Transportation

DiAhanna Allen

Wednesday, January 7th – Wednesday, March 18th

This training prepares childcare providers to safely transport children by covering best practices, legal requirements, and safety procedures. Participants will learn how to prevent risks, conduct proper checks, and ensure a secure ride every time. **Hours Earned: 1**

Training Level	CCDF	DHR Performance Standards Area	CDA Subject Area	Alabama Pathways CKA	Target Age Group
Basic	9	HSUP	1	HSN	ALL

ZOOM

Administration

Director's Forum

Susan Fordham

Wednesday, March 18th 6pm–7pm

Join us as center directors to get together to discuss today's issues and possibly meet new friends! You can join us straight from your office as we will be meeting together through Zoom. For more information, contact Susan Fordham at 334-749-8400 ext. 9222 or susan.fordham@ccrc-alabama.org **Hours Earned: 1**

Training Level	CCDF	DHR Performance Standards Area	CDA Subject Area	Alabama Pathways CKA	Target Age Group
Intermediate	13,15,16,19,20	AM, CCPF	5,6	MA	AMDIN

Health, Safety and Universal Precaution

Mix, Mash, Learn: Simple Classroom Cooking

Lauren Bailey

Monday, February 2nd 6pm-8pm

Even the simplest cooking experiences help toddlers and preschoolers develop fine motor skills, language, math concepts, and healthy eating habits. This session provides easy snack-time ideas that fit smoothly into classroom routines. **Hours Earned: 2**

Training Level	CCDF	DHR Performance Standards Area	CDA Subject Area	Alabama Pathways CKA	Target Age Group
Basic	13	HSUP	1,2	HSN	Toddlers and Preschoolers

Positive Discipline and Guidance

The Power of Praise

Amanda Baker

Thursday, March 12th 6pm-8pm

Unlock the power of intentional, meaningful praise in early childhood classrooms. This engaging 2-hour training will guide toddler and preschool teachers in using specific, effective praise to build children's confidence, strengthen positive behaviors, and support social-emotional growth. Participants will learn practical strategies, analyze real classroom scenarios, and walk away with ready-to-use language that transforms everyday moments into powerful learning opportunities. **Hours Earned: 2**

Training Level	CCDF	DHR Performance Standards Area	CDA Subject Area	Alabama Pathways CKA	Target Age Group
Intermediate	13,15	PDG	3	LEE	Toddlers and Preschoolers

Calm, Connected, and In Control

Lauren Bailey

Tuesday, March 24th 6pm-8pm

Young children thrive when expectations are clear, consistent, and communicated with warmth. In this session, educators learn learn proactive strategies to support positive behavior and build a calm, cooperative classroom community. **Hours Earned: 2**

Training Level	CCDF	DHR Performance Standards Area	CDA Subject Area	Alabama Pathways CKA	Target Age Group
Beginner	15	PDG	1,3	CGD	ALL

Child Development

APT: Right on Time: Routines for the Early Childhood Classroom

APTV

Thursday, January 22nd 6pm-8pm

Routines keep a successful classroom running smoothly, making for effective teaching, learning, and growing. In this two-hour training, we will explore how to create classroom routines to effectively care for infants and toddlers while maintaining the flexibility that this age group requires. **Hours Earned: 2**

Training Level	CCDF	DHR Performance Standards Area	CDA Subject Area	Alabama Pathways CKA	Target Age Group
Intermediate	13,20	CD	1,7	LEE, PPD	Infants/Toddlers

APT: Moving with the Brain in Mind

Ashley Bierman

Thursday, January 29th 6pm-8pm

Did you know that the brain and movement are linked for development for infants and toddlers? In this two-hour training, we will discuss the importance of rolling, crawling and walking for brain development. Let's get moving!

Hours Earned: 2

Training Level	CCDF	DHR Performance Standards Area	CDA Subject Area	Alabama Pathways CKA	Target Age Group
Basic	13,17,20	CD	2,3,8	CGD, LEE	Infants and Toddlers

Quality

Building Strong Little Hands: Implementing Fine Motor Journals in Preschool

Amanda Baker

Thursday, January 8th 6pm-8pm

Discover how to bring fine motor to life in your classroom! In this hands-on training, you'll explore the key to fine motor skills preschoolers need and learn how journals can build these skills through fun, developmentally appropriate activities. Participants will try out engaging materials, gain practical strategies for supporting students who need extra help, and leave with ready-to-use ideas and tools to strengthen little hands for big learning. **Hours Earned: 2**

Training Level	CCDF	DHR Performance Standards Area	CDA Subject Area	Alabama Pathways CKA	Target Age Group
Advanced	13	QCCL, CD	2	CGD, LEE	Preschoolers

Quality**APT: Play, Learn, and Discover through Science Experiments****APTV****Thursday, March 5th 6pm-8pm**

Through hands-on activities and exciting media, this training will bring science to life in your classroom. This two-hour training is packed with fun experiments to bring the joy of learning to your classroom. This training will utilize the PBS KIDS series Sid The Science Kid and various other APT and PBS resources. **Hours Earned: 2**

Training Level	CCDF	DHR Performance Standards Area	CDA Subject Area	Alabama Pathways CKA	Target Age Group
Intermediate	13,17,20	QCCL, CD	1,2,3,8	CGD, LEE	Preschool

Language Development**Creating a Positive Reading Culture in the Classroom****Amanda Baker****Thursday, February 12th 6pm-8pm**

Join us for a practical and engaging training designed to help early childhood educators build a positive reading culture in their classrooms. Participants will explore strategies for creating literacy-rich environments and discover ways to embed meaningful literacy experiences throughout daily routines and play. Leave with ready-to-use ideas that nurture a lifelong love of reading in young children. **Hours Earned: 2**

Training Level	CCDF	DHR Performance Standards Area	CDA Subject Area	Alabama Pathways CKA	Target Age Group
Basic	13	LD, QCCL	2,8	CGD, LEE	Toddlers, Preschool & School-Agers

From Babble to Conversation: Guiding Language Milestones**Ashley Bierman****Thursday, February 26th 6pm-8pm**

Learn how to support early language development through responsive interactions, play-based strategies, and milestones that help children grow from sounds to meaningful conversations. **Hours Earned: 2**

Training Level	CCDF	DHR Performance Standards Area	CDA Subject Area	Alabama Pathways CKA	Target Age Group
Basic	13	LD	2,7	CGD, LEE, COA	ALL

Child Care Professional and the Family

Tom Copeland: Money Management & Retirement

DiAhanna Allen

Monday, January 6th 6pm-8pm

Managing money can feel overwhelming, but this training makes it simple and practical for childcare providers.

You'll learn easy tips to track expenses, save for the future, and start planning for retirement with confidence.

Come ready to gain tools that will help you feel more secure today and prepared for tomorrow. **Hours Earned: 2**

Training Level	CCDF	DHR Performance Standards Area	CDA Subject Area	Alabama Pathways CKA	Target Age Group
Basic	12,14	CCPF, CD	2,4	CGD, ICFC	ALL

APT: Bridging the Gap: Family Engagement

APTV

Thursday, February 5th 6pm-8pm

Families may look and communicate differently today, but our focus is still the same: healthy development for the child! This training will explore and discuss ways to connect and enhance our relationships with families.

From challenges to collaborating, we will explore simple ways to bridge the gap throughout the school year and keep families engaged and excited about learning. **Hours Earned: 2**

Training Level	CCDF	DHR Performance Standards Area	CDA Subject Area	Alabama Pathways CKA	Target Age Group
Basic	13,16	CCPF	1,3,4	CGD, DIV, ICFC	Preschool

Connecting Generations in the Workplace

Susan Fordham

Thursday, March 26th 6pm-8pm

Today, there are four generations working together in the workforce. Each generation has its own characteristics.

We will explore what makes each generation special and how we can bridge the generation gaps in the workplace. **Hours Earned: 2**

Training Level	CCDF	DHR Performance Standards Area	CDA Subject Area	Alabama Pathways CKA	Target Age Group
Intermediate	18	CCPF, ADMIN	5	MA	ALL

Baby Doll Circle Time

Jessica Segrest & Ashley Bierman

Wednesday, March 18th 5pm-7pm CST.

CHAMBERS COUNTY

130 Sportsplex Dr, Valley, AL 36854

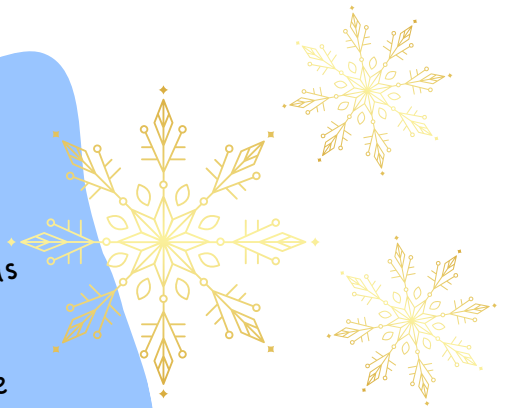
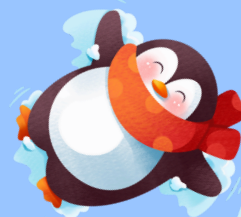
Bring smiles, laughter, and love to your classroom! Using Dr. Becky Bailey's Baby Doll Circle Time, this training helps you connect with the youngest learners and support their social-emotional growth in joyful ways.. **Hours**

Earned: 2

Training Level	CCDF	DHR Performance Standards Area	CDA Subject Area	Alabama Pathways CKA	Target Age Group
Basic	15,20	PDG	3	ICFC, LEE	ALL

FUN FACT

Young children's brains form more than 1 million new neural connections every second during the first few years of life! This rapid growth means everyday interactions—like talking, singing, playing, and comforting—are actually building the architecture of the brain. Early experiences truly shape lifelong learning.



REGISTRATION PAGE FOR ONLINE CLASSES ONLY

Name: _____

Date of Birth: _____

Mailing Address: _____

City: _____ State: _____ Zip: _____

County: _____

Work Phone: _____ Cell Phone: _____

Email: _____

(A working email address must be given for each participant.
The Center's email address will not be accepted.)

Please Check Appropriate Box:

- ☐ Family Child Care Home Provider
- ☐ Group Home Provider
- ☐ Center Director
- ☐ Center Teacher
- ☐ Assistant Teacher
- ☐ Relative Provider
- ☐ Other _____



Check	Classes
	Pre-Service Health and Safety
	Welcome to Child Care
	Getting Started (Family Child Care Homes
	CCDF #8 Hazardous Materials
	CCDF # 9 Transportation

Register for Trainings the Right Way

To make sure DHR can easily access your training and certification records, you must register through the correct website based on your role.

 If you work for a DHR-licensed childcare facility:


✓ Register for all in-person trainings on

 Alabama Pathways


<https://www.alabamapathways.org/>

(This is now the required system for DHR-approved training records.)



 If you are NOT currently employed by a licensed facility, exempt, interested in becoming a provider, or not yet hired:

➔ Register for all classes on ASAP

 If you are taking an online (Moodle) training:

➔ Register on ASAP

<https://go.asapconnected.com/?org=5041>



Questions:

Susan Fordham

334-749-8400 EXT: 9222

susan.fordham@ccrc-alabama.org



Trainings	Date	Time	Method
Welcome to Child Care Winter 2026	1/7/2026-3/18/2026	10 Weeks	Online
Pre-Service Health and Safety Winter 2026	1/7/2026-3/18/2026	10 Weeks	Online
Getting Started Winter 2026	1/7/2026-3/18/2026	10 Weeks	Online
CCDF # 8 Hazardous Materials	1/7/2026-3/18/2026	10 Weeks	Online
CCDF # 9 Transportation	1/7/2026-3/18/2026	10 Weeks	Online
Tom Copeland: Money Management & Retirement	1/6/2026	6pm-8pm	In-Person
Building Strong Little Hands	1/8/2026	6pm-8pm	In-Person
AELG 1: Orientation	1/13/2026	6pm-8pm	In-Person
AELG 2: Observations	1/20/2026	6pm-8pm	In-Person
APT: Right On Time	1/22/2026	6pm-8pm	In-Person
AELG 3: The Role of the Parent and Caregivers	1/27/2026	6pm-8pm	In-Person
APT: Moving with the Brain in Mind	1/29/2026	6pm-8pm	In-Person
Mix, Mash, Learn: Simple Classroom Cooking	2/2/2026	6pm-8pm	In-Person
AELG 4: Self-Concept & Emotional Development	2/3/2026	6pm-8pm	In-Person
APT: Bridging the GAP: Family Engagement	2/5/2026	6pm-8pm	In-Person
AELG 5: Social Development	2/10/2026	6pm-8pm	In-Person
Creating a Positive Reading Culture in the Classroom	2/12/2026	6pm-8pm	In-Person
AELG 6: Language Development & Literacy	2/17/2026	6pm-8pm	In-Person
AELG 7: Physical Development	2/24/2026	6pm-8pm	In-Person
From Babble to Conversations	2/26/2026	6pm-8pm	In-Person
AELG 8: Cognitive Development	3/3/2026	6pm-8pm	In-Person
APT: Play, Learn, and Discover through Science	3/5/2026	6pm-8pm	In-Person
AELG: 9: Putting it All Together for AL Children	3/10/2026	6pm-8pm	In-Person
The Power of Praise	3/12/2026	6pm-8pm	In-Person
Baby Doll Circle Time (Chambers County)	3/18/2026	5pm-7pm CST	In-Person
Directors Forum	3/18/2026	6pm-7pm	Zoom
Calm Connected and In Control	3/24/2026	6pm-8pm	In-Person
Connecting Generations in Workplace	3/26/2026	6pm-8pm	In-Person

DHR AMSA (Alabama Minimum Standards Training Areas)		CDA Subject Areas (Child Development Associate)	CKA (Alabama Pathways Core Knowledge Areas)		Target Age Group
CD	Child Development	1. Planning a safe and healthy learning environment	CGD	Child Growth and Development	Infants = Birth to 12 months
HSUP	Health, Safety, and Universal Precautions	2. Advancing children's physical and intellectual development	HSN	Health, Safety and Nutrition	
QCCL	Quality Child Care and Licensing	3. Supporting children's social and emotional development	LEE	Learning Experiences and Enrichment	Toddlers = 1 and 2 year olds
CCPF	Child Care Professional and the Family	4. Building productive relationships with families	DIV	Diversity	
LD	Language Development	5. Managing an effective program	COA	Child Observation and Assessment (Planning for Individual Needs)	Preschoolers = 3 and 4 year olds
PDG	Positive Discipline and Guidance	6. Maintaining a commitment to professionalism	ICFC	Interaction with Children, Families and Communities	School-agers = 5 to 12 year olds
AM	Administration and Management	7. Observing and recording children's behavior	PPD	Personal and Professional Development	ALL = Infants, Toddlers, Preschoolers, and School-agers
		8. Understanding principles of child development and learning	MA	Management and Administration	

Training Levels

Basic	Most appropriate for entry-level professionals who are new to early childhood and/or school-age care. Basic Level Training covers a foundational understanding and demonstration of developing skills.
Intermediate	Most appropriate for professionals who have at least (2) years of experience and 120 hours of training in child development, and are moving toward more formal education. Intermediate Level Training includes expanding knowledge and application, and refining skills]
Advanced	Most appropriate for professionals who have at least three (3) years of experience and 30 credit hours in child development. Advanced Level Training focuses on a more thorough knowledge and understanding of developmentally appropriate practice and highly effective application and demonstration of skills.

CCDF Training Areas

1. *Prevention and control of infectious diseases (including immunizations)*
2. *Sudden Infant Death Syndrome (SIDS) prevention and use of safe sleep practices*
3. *Administration of medication*
4. *Prevention of and response to emergencies due to food and allergic reactions*
5. *Building and physical premises safety, including identifying electrical hazards, bodies of water, and vehicular traffic*
6. *Prevention of Shaken Baby Syndrome and abusive head trauma*
7. *Emergency preparedness and response planning for natural or man-caused events*
8. *Handling and storage of hazardous materials, including correct disposal of bio-contaminants*
9. *If applicable, appropriate pre-cautions in transporting children*
10. *First-aid and CPR*
11. *Recognizing and reporting child abuse and neglect*
12. Identifying and serving homeless children and their families
13. Promoting the social, emotional, physical, and cognitive development of children, **including those related to nutrition and physical activity, using scientifically-based, developmentally appropriate and age appropriate strategies**
14. Caring for children in geographic areas with significant concentrations of poverty and unemployment
15. Implementing behavior strategies, including positive behavior interventions and support models that promote positive social and emotional development and reduce challenging behaviors, **including reducing expulsions of preschool-aged children for such behaviors**
16. Engaging parents and families in culturally and linguistically appropriate ways to expand their knowledge, skills and capacity to be meaningful partners in supporting their children's positive development
17. Understanding early neurological development
18. Using data to guide program improvement
19. Supporting positive development of **school-age children**
20. Improving the quality of programs and services for **infants and toddlers**



Our Mission:

Promoting strong families through the provision of support services and education for child care providers, parents, employers, and the community.

Child Care Resource Center: A Family Resource Center is a non-profit, private agency that promotes quality child care through the provision of support services for child care providers, parents, employers and communities. Funding is received through contract and grants with government and corporate entities, as well as civic, charitable, and individual donors.

Services Include:

**Training & Technical Assistance for Child Care Programs;
Lending Library/Resource Room/Mobile Resource Van;
Quality Enhancement Projects/STEPS to Accreditation;
Family Resource & Referral; Financial Assistance for Child Care;
Fatherhood Connection including "Dad's League";
Employer Assistance; Community Awareness;
Parent Education**

Funding for "Training Times" is provided by Alabama Department of Human Resources

