



Child Care Resource Center, Inc.

Presents

Workshop Saturday

DATE: Saturday, February 21, 2026

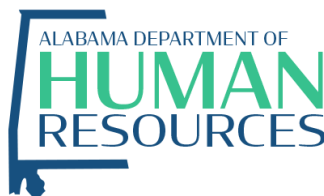
PLACE: **Southern Union State Community College, BLDG. 8**
West Point Parkway
Opelika, AL 36801
(Directly across from Winn Dixie)

COST: FREE

SCHEDULE: 8:00 Sign-in & Announcements
8:30- 10:30 1st Session
10:45 – 12:45 2nd Session

****CLASS SPACE IS LIMITED! REGISTER EARLY!****

Must register on Alabama Pathways. See page 5 for more information.



Child Care Resource Center's training is open to all persons regardless of race, color, national origin, handicapping disability, age, sex, political beliefs, or religion. If your attendance is hindered by participation fees, transportation, language, location or for any other reason, you may contact the office at 334 749-8400. As resources are available, attempts will be made to overcome obstacles that hinder attendance.

SESSIONS

Positive Power-Ups: Leveling Up Your Guidance Skills

Margaret Vollenweider

Lead Teacher, Auburn University Early Learning Center

Tired of feeling like a broken record? Ready to swap the scolding for **superpowers**? We'll talk about the benefits and use of positive phrasing and how it can make children more willing to listen! We're also kicking generic "Good Job!" praise to the curb and unlocking the magic of effective praise - the kind that actually builds confidence and sparks a growth mindset that will keep those children busy! **Hours Earned: 2**

Training Level	CCDF	DHR Performance Standards Area	CDA Subject Area	CKA	Target Age Group
Basic	13	PDG	2, 3, 8	CGD, LEE	Preschool

Celebrating Unique Beginnings: Supporting Neurodivergent Infants, Toddlers, and Their Families with Evidence-Based Practices

Teresa Lewis BS. ECE., ITL-IV, PDS

This interactive session explores the early identification and support of neurodivergent infants and toddlers, focusing on practical, evidence-based strategies for families and professionals. Participants will gain an understanding of neurodiversity in early childhood, including signs of autism, ADHD, and sensory processing differences, while celebrating each child's unique developmental journey. **Hours Earned: 2**

Training Level	CCDF	DHR Performance Standards Area	CDA Subject Area	CKA	Target Age Group
Advanced	13, 20	CD	2, 3, 8	CGD, ICFC	ALL



CLASS REGISTRATIONS

TRAINING CREDIT: 4 Hours

Registrations must be RECEIVED by
February 13, 2026.

However, if classes are full prior to that date,
registrations will no longer be accepted.

WORKSHOP SATURDAY GUIDELINES

Check-in begins at 8:00am.

There will be NO on-site registration.

There will be NO sign-in after 8:30am.

****PLEASE BE ON TIME****

****PLEASE DO NOT BRING CHILDREN****

REFRESHMENTS

Light refreshments will be served.

You may want to eat breakfast before arriving.

FOR YOUR COMFORT

Please dress comfortably and in layers. You may want to bring a sweater or jacket. The room temperature may be cooler or warmer than you prefer, so please be prepared.



PARKING

Workshop Saturday parking will be located at Southern Union across from Winn Dixie/ ALDI. Enter the parking lot on West Point Parkway, just past Winn Dixie shopping center – look for our van!

From Auburn via I-85

Get on I-85 N from E Glenn Ave

Follow I-85 N to exit 62

Turn left onto US Hwy 280.

Turn right at red light onto Fox Run Pkwy.

Follow Fox Run to West Point Pkwy

Turn right at light in front of Winn Dixie (This will be West Point Pkwy.)

Turn left into parking lot entrance, across from Averitt Express.

Follow road to Parking Lot B, in front of BLDG. 8, The Business & Technology Center.

Entrance to Workshop Saturday will be through the South Room.

DIRECTIONS

From Opelika via Samford Ave.

Follow Pepperell Pkwy, which turns into 2nd Ave.

Continue on 2nd Ave., which turns into Samford Ave.

Continue through red light, crossing Fox Run Pkwy. At this point, 2nd Ave. becomes West Point Pkwy.

(Winn Dixie will be on your right after passing through red light).

Turn left into parking lot entrance, across from Averitt Express.

Follow road to Parking Lot B, in front of BLDG. 8, The Business & Technology Center.

Entrance to Workshop Saturday will be through the South Room.

From Phenix City

Follow Hwy. 280 to Opelika.

Cross over I 85

Continue to red light at Fox Run Pkwy.

Turn right onto Fox Run Pkwy.

Turn right at red light onto West Point Pkwy.

Turn left into parking lot entrance, across from Averitt Express.

Follow road to Parking Lot B, in front of BLDG. 8, The Business & Technology Center.

Entrance to Workshop Saturday will be through the South Room.

From Lafayette via Hwy. 431

Drive on Hwy. 431 to Opelika.

You will pass Opelika High School on right and see Southern Union on left.

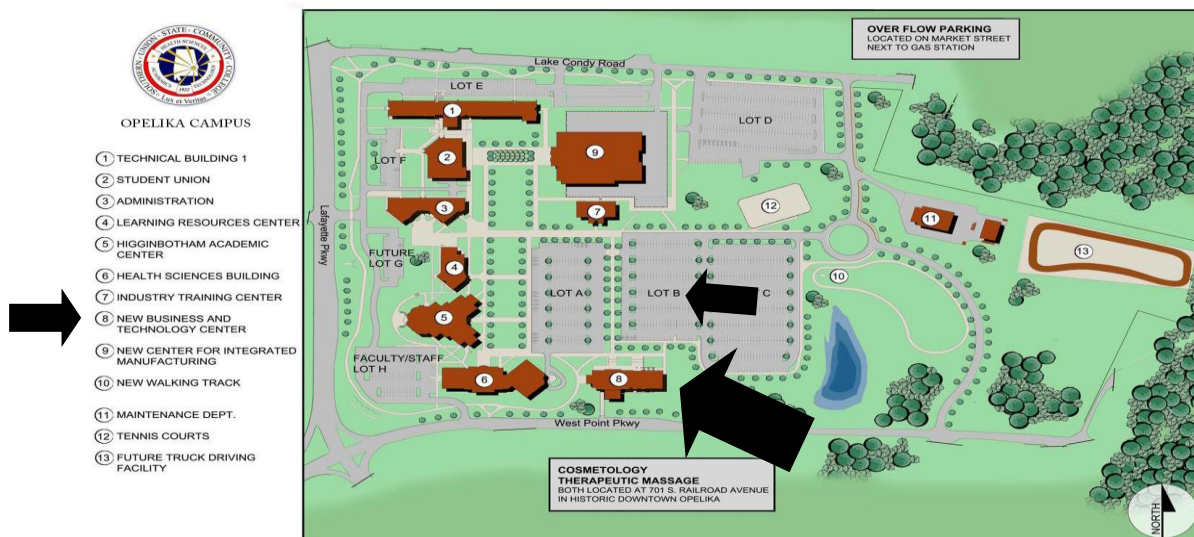
Turn left at red light onto West Point Pkwy.

Winn Dixie will now be on your right across from Southern Union.

Turn left into parking lot entrance, across from Averitt Express.

Follow road to Parking Lot B, in front of BLDG. 8, The Business & Technology Center.

Entrance to Workshop Saturday will be through the South Room.





Register for Trainings the Right Way

To make sure DHR can easily access your training and certification records, you must register through the correct website based on your role.

If you work for a DHR-licensed childcare facility:

- ✓ Register for all in-person trainings on [Alabama Pathways](https://www.alabamapathways.org/)
<https://www.alabamapathways.org/>
(This is the required system for DHR-approved training records.)



If you are NOT currently employed by a licensed facility, are exempt, interested in becoming a provider, or not yet hired:

- ➔ Contact DiAhanna Allen, to register
334-749-8400 EXT: 9230
diahanna.allen@ccrc-alabama.org

💻 If you are taking an online (Moodle) training: ➔ Register on ASAP

<https://go.asapconnected.com/?org=5041>

Questions:

Susan Fordham

334-749-8400 EXT: 9222

susan.fordham@ccrc-alabama.org



Training Levels

Basic = Most appropriate for entry-level professionals who are new to early childhood and/or school-age care. **Basic Level Training** covers a foundational understanding and demonstration of developing skills.

Intermediate = Most appropriate for professionals who have at least (2) years of experience and 120 hours of training in child development, and are moving toward more formal education. **Intermediate Level Training** includes expanding knowledge and application, and refining skills.

Advanced = Most appropriate for professionals who have at least three (3) years of experience and 30 credit hours in child development. **Advanced Level Training** focuses on a more thorough knowledge and understanding of developmentally appropriate practice and highly effective application and demonstration of skills.

Target Age Groups

Infants = Birth to 12 months

Toddlers = 1 and 2 year olds (13 to 36 months)

Preschoolers = 3 and 4 year olds

School-agers = 5 to 12 year olds

ALL = Infants, Toddlers, Preschoolers, and School-agers

CDA (Child Development Associate) Content Areas

1. Planning a safe, healthy environment to invite learning
2. Steps to advance children's physical and intellectual development
3. Positive ways to support children's social and emotional development
4. Strategies to establish productive relationships with families
5. Strategies to manage an effective program operation
6. Maintaining a commitment to professionalism
7. Observing and recording children's behavior
8. Principles of child growth and development

Alabama Pathways Core Knowledge Areas (CKA)

CGD = Child Growth and Development

HSN = Health, Safety and Nutrition

LEE = Learning Experiences and Enrichment

DIV = Diversity

COA = Child Observation and Assessment (Planning for Individual Needs)

ICFC = Interaction with Children, Families and Communities

PPD = Personal and Professional Development

MA = Management and Administration

CCDF Training Areas

1. *Prevention and control of infectious diseases (including immunizations)*
2. *Sudden Infant Death Syndrome (SIDS) prevention and use of safe sleep practices*
3. *Administration of medication*
4. *Prevention of and response to emergencies due to food and allergic reactions*
5. *Building and physical premises safety, including identifying electrical hazards, bodies of water, and vehicular traffic*
6. *Prevention of Shaken Baby Syndrome and abusive head trauma*
7. *Emergency preparedness and response planning for natural or man-caused events*
8. *Handling and storage of hazardous materials, including correct disposal of bio-contaminants*
9. *If applicable, appropriate pre-cautions in transporting children*
10. *First-aid and CPR*
11. *Recognizing and reporting child abuse and neglect*
12. Identifying and serving homeless children and their families
13. Promoting the social, emotional, physical, and cognitive development of children, **including those related to nutrition and physical activity, using scientifically-based, developmentally appropriate and age appropriate strategies**
14. Caring for children in geographic areas with significant concentrations of poverty and unemployment
15. Implementing behavior strategies, including positive behavior interventions and support models that promote positive social and emotional development and reduce challenging behaviors, **including reducing expulsions of preschool-aged children for such behaviors**
16. Engaging parents and families in culturally and linguistically appropriate ways to expand their knowledge, skills and capacity to be meaningful partners in supporting their children's positive development
17. Understanding early neurological development
18. Using data to guide program improvement
19. Supporting positive development of **school-age children**
20. Improving the quality of programs and services for **infants and toddlers**

Workshop Saturday



Child Care Resource Center, Inc.
510 South 7th Street
Opelika, AL, 36801