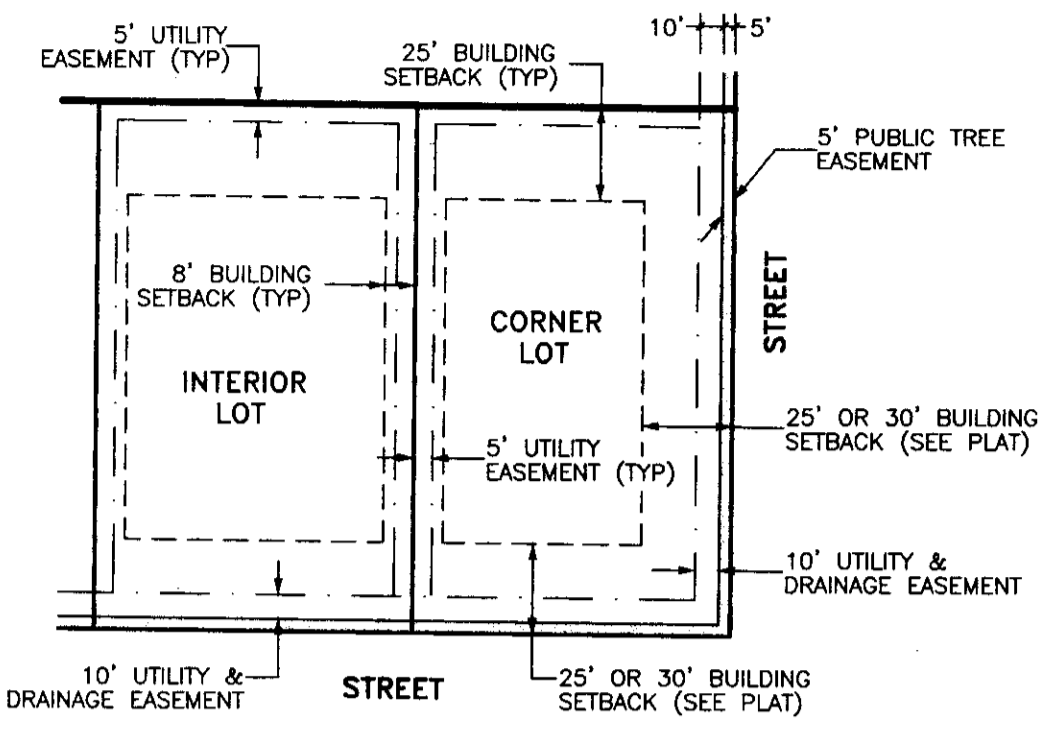


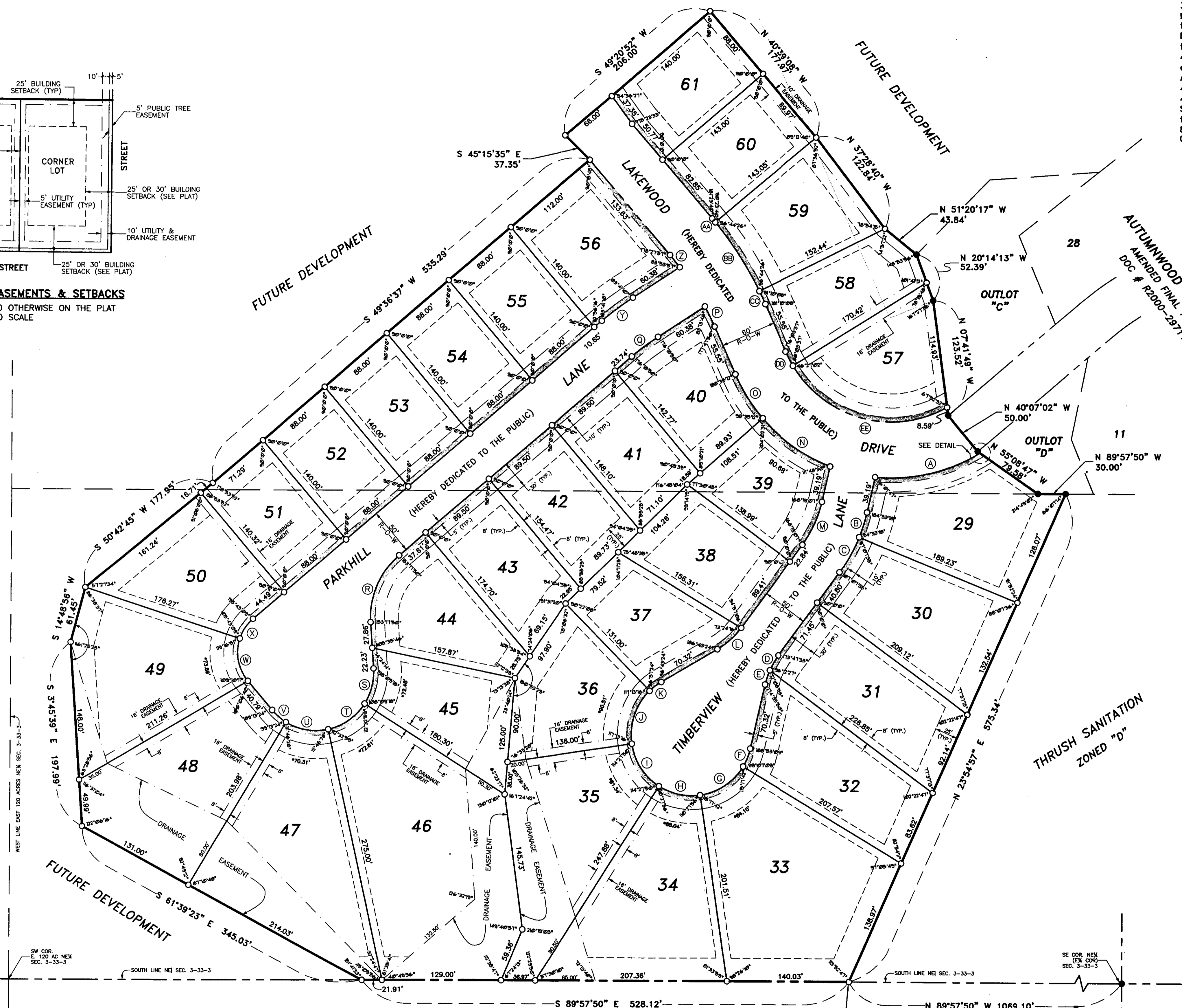
AUTUMNWOOD PHASE II FINAL PLAT

DESCRIPTION OF PROPERTY SUBDIVIDED

Part of the East 120 Acres of the Northeast Quarter of Section 3, Township 33 North, Range 3, East of the Third Principal Meridian described as follows: Commencing at the southeast corner of the Northeast Quarter of said Section 3; thence North 89°57'50" West 1069.10 feet along the south line of said Northeast Quarter to the POINT OF BEGINNING; thence North 23°54'57" East 575.34 feet to the south line of Outlot "D" in Autumnwood Phase I, according to the amended final plat thereof recorded November 14, 2000 as document #R2000-29711 in the LaSalle County Recorder's Office; thence North 89°57'50" West 30.00 feet along the south line of Outlot "D" to the southwest corner thereof; thence North 55°08'47" West 79.58 feet along the west line of said Autumnwood Phase I; thence North 40°07'02" West 50.00 feet along the west line of said Autumnwood Phase I; thence North 7°41'49" West 123.52 feet along the west line of said Autumnwood Phase I; thence North 20°14'13" West 52.39 feet along the west line of said Autumnwood Phase I to the northwest corner of Outlot "C" in said Autumnwood Phase I; thence North 51°20'17" West 43.84 feet; thence North 37°28'40" West 122.84 feet; thence North 40°39'08" West 177.97 feet; thence South 49°20'52" West 206.00 feet; thence South 45°15'35" East 37.35 feet; thence South 49°36'37" West 535.29 feet; thence South 50°42'45" West 177.95 feet; thence South 14°48'56" West 61.45 feet; thence South 3°45'39" East 197.99 feet; thence South 61°39'23" East 345.03 feet to the south line of the Northeast Quarter of said Section 3; thence South 89°57'50" East 528.12 feet along the south line of said Northeast Quarter to the POINT OF BEGINNING; situated in the City of Ottawa, LaSalle County, Illinois.



TYPICAL LOT EASEMENTS & SETBACKS
* UNLESS NOTED OTHERWISE ON THE PLAT NO SCALE

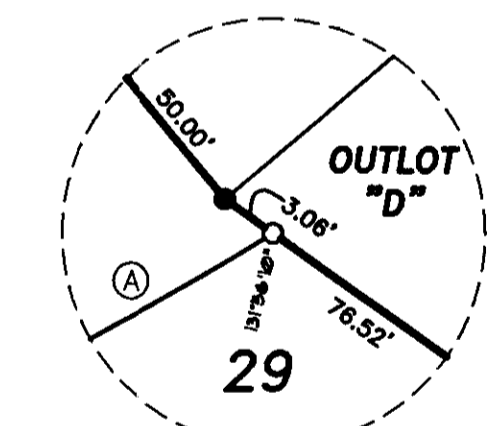


CURVE DATA

A Rad. = 185.00' Arc = 118.87' Ch. = 116.65'	L Rad. = 86.25' Arc = 35.08' Ch. = 34.82'	W Rad. = 47.50' Arc = 48.55' Ch. = 46.46'
B Rad. = 175.00' Arc = 77.52' Ch. = 27.79'	M Rad. = 125.00' Arc = 50.97' Ch. = 50.62'	X Rad. = 47.50' Arc = 28.06' Ch. = 25.74'
C Rad. = 175.00' Arc = 43.53' Ch. = 43.42'	N Rad. = 185.00' Arc = 90.68' Ch. = 89.77'	V Rad. = 325.00' Arc = 41.82' Ch. = 41.79'
D Rad. = 86.25' Arc = 18.89' Ch. = 18.65'	O Rad. = 185.00' Arc = 55.45' Ch. = 55.24'	Z Rad. = 314.00' Arc = 16.82' Ch. = 16.81'
E Rad. = 86.25' Arc = 16.37' Ch. = 16.34'	P Rad. = 314.00' Arc = 24.15' Ch. = 24.14'	AA Rad. = 374.00' Arc = 5.15' Ch. = 5.15'
F Rad. = 65.25' Arc = 20.77' Ch. = 20.68'	Q Rad. = 275.00' Arc = 35.39' Ch. = 35.36'	BB Rad. = 374.00' Arc = 68.00' Ch. = 67.80'
G Rad. = 65.25' Arc = 57.61' Ch. = 55.76'	R Rad. = 87.50' Arc = 81.56' Ch. = 78.64'	CC Rad. = 374.00' Arc = 15.28' Ch. = 15.26'
H Rad. = 65.25' Arc = 46.61' Ch. = 45.63'	S Rad. = 62.50' Arc = 38.61' Ch. = 38.95'	DD Rad. = 125.00' Arc = 17.18' Ch. = 17.18'
I Rad. = 65.25' Arc = 55.72' Ch. = 54.04'	T Rad. = 62.50' Arc = 49.20' Ch. = 47.94'	EE Rad. = 125.00' Arc = 190.45' Ch. = 172.56'
J Rad. = 65.25' Arc = 62.00' Ch. = 59.69'	U Rad. = 62.50' Arc = 47.50' Ch. = 46.57'	
K Rad. = 65.25' Arc = 15.84' Ch. = 15.81'	V Rad. = 62.50' Arc = 20.12' Ch. = 20.04'	

LOT AREAS

LOT 29 21,182 S.F.	LOT 46 42,519 S.F.
LOT 30 21,383 S.F.	LOT 47 30,610 S.F.
LOT 31 19,697 S.F.	LOT 48 25,199 S.F.
LOT 32 19,856 S.F.	LOT 49 23,400 S.F.
LOT 33 34,917 S.F.	LOT 50 16,654 S.F.
LOT 34 25,865 S.F.	LOT 51 12,323 S.F.
LOT 35 24,319 S.F.	LOT 52 12,320 S.F.
LOT 36 16,186 S.F.	LOT 53 12,320 S.F.
LOT 37 14,049 S.F.	LOT 54 12,320 S.F.
LOT 38 14,114 S.F.	LOT 55 12,320 S.F.
LOT 39 12,509 S.F.	LOT 56 16,157 S.F.
LOT 40 14,231 S.F.	LOT 57 14,971 S.F.
LOT 41 12,979 S.F.	LOT 58 13,282 S.F.
LOT 42 13,540 S.F.	LOT 59 15,272 S.F.
LOT 43 14,572 S.F.	LOT 60 12,725 S.F.
LOT 44 15,046 S.F.	LOT 61 12,528 S.F.
LOT 45 14,531 S.F.	

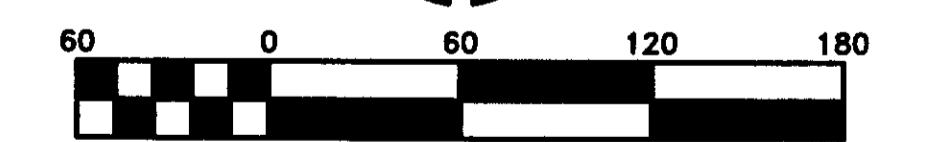


OWNER & DEVELOPER:
YOESE DEVELOPMENT, L.L.C.
1969 EAST U.S. ROUTE 6
OTTAWA, IL 61350

TOTAL AREA = 698,575 S.F.
(16.04 ACRES)

TAX I.D. NUMBERS:
21-03-208-000
21-03-224-000
21-03-225-000
21-03-226-000

NORTH



Scale: 1" = 60'

LEGEND

- BOUNDARY OF PROPERTY SUBDIVIDED
- U.S. GOVERNMENT SUBDIVISION LINE
- LOT LINE
- UTILITY & DRAINAGE EASEMENT LINE
- PUBLIC TREE EASEMENT
- BUILDING SETBACK LINE
- RECOVERED IRON PIPE OR PIN
- SET 1/2" # IRON PIPE, ± 30" LONG
- RIGHT-OF-WAY
- S.F. SQUARE FEET

- NOTES**
- Existing zoning - "A-1" Residential by the City of Ottawa.
 - Easements shown are for the use of public utilities and drainage.
 - All lots will be served with city water and sewer.
 - Storm water detention shall be provided to meet the requirements of the City of Ottawa.
 - Drainage easements are for access to and maintenance of drainage related features including storm sewer, manholes, drainage structures, detention ponds, etc...
 - Bearings are referenced from an assumed north point.
 - All angles of intersections with curved lines refer to the chord.

401-064

FINAL PLAT
AUTUMNWOOD PHASE II, CITY OF OTTAWA, LASALLE COUNTY, ILLINOIS

**ETSCHIED
DUTTLINGER
& ASSOCIATES INC.**
Professional Engineers & Land Surveyors

1304 Gemini Circle
Ottawa, Illinois 61350
TEL: 815-434-3925
FAX: 815-434-3953

PROFESSIONAL DESIGN FIRM # 184-000711		SHEET NO.
DRAWN BY: M.E.M.	CHECKED BY: PROJECT # 2918.02	1 OF 2
DATE PLOTTED: AUGUST 12, 2004		FILENAME: J:\291802_FINAL.DWG

Autumnwood