

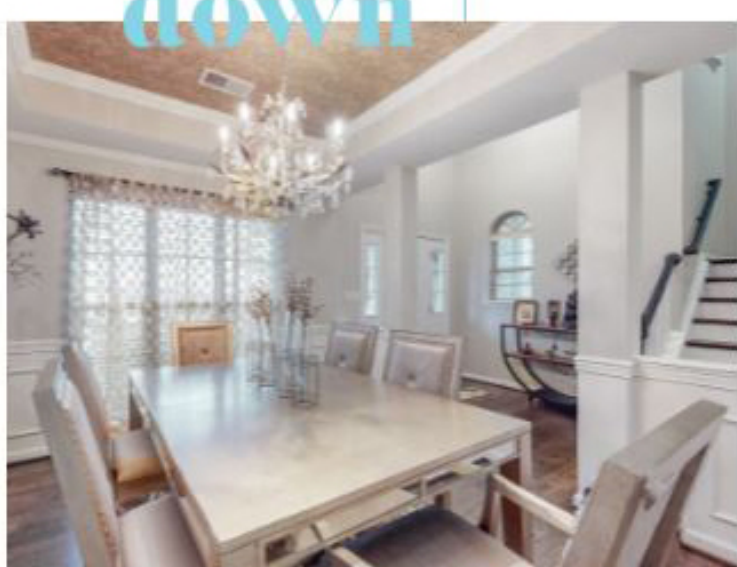


APRIL

## Louisville Real Estate Report

Home sales in Greater Louisville declined in March while sale prices were up compared to a year ago. Total sales decreased 20.4% from 1561 in March 2022 to 1242 in March 2023. The average home sale price was \$296,610, up 6% from \$279,829 in March 2022.

down



MARCH REVIEW

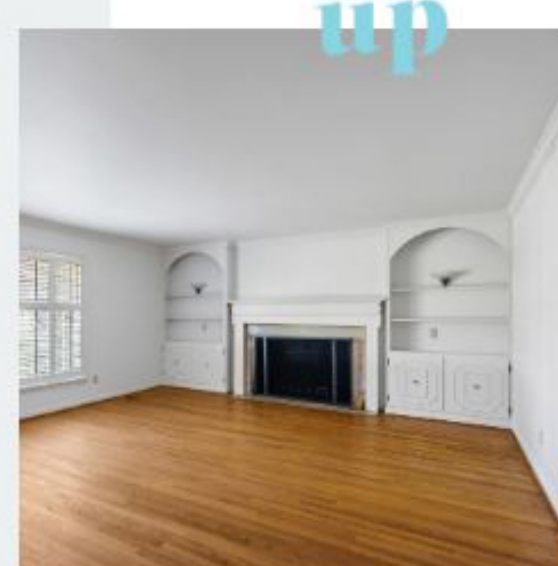
### Homes Sold

2023 | 1,242  
2022 | 1,561

MARCH REVIEW

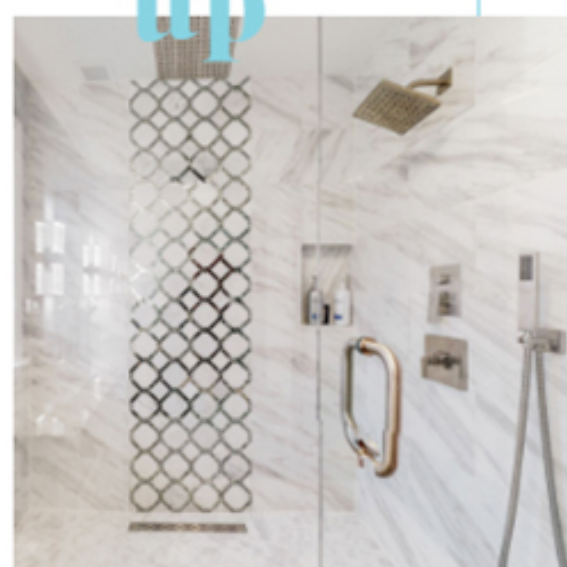
### Average Sales Price

2023 | \$296,610  
2022 | \$279,829



up

up



MARCH REVIEW

### Average DOM

Days on Market  
2023 | 38  
2022 | 24

MARCH REVIEW

### New Listings

2023 | 1,576  
2022 | 2,037



down

Information is deemed to be reliable but is not guaranteed. MLS: All areas

#### BUSINESS SPOTLIGHT



As a real estate professional, I have explored many of the diverse neighborhoods and communities in the area and have found that each has its own unique qualities. One of the standout features is the number of specialty clothing boutiques. Among these, Glasscock Too shines with its expertly curated selection of designer clothing and accessories that cater to various tastes and styles. This boutique is a must-visit destination for anyone looking to enhance their wardrobe while supporting a local business.

Glasscock Too is the sister store of the beloved St. Matthews establishment Glasscock, owned and operated by Mary F. Glasscock for 46 years. With Jeff Hunter as the creative stylist, manager, and buyer, the store aims to provide a contemporary shopping experience with a diverse range of clothing options suitable for all ages and sizes.

Although time is running out, it's not too late to consider your attire for the upcoming Kentucky Derby and its related festivities. At Glasscock Too, you will find a wide selection - including traditional Derby Day looks, in addition to bolder and more daring styles. Whether you're looking for some of the season's trendiest colors such as hot pink and yellow, or in search of classic floral prints, you'll find something that suits your personal taste and helps you stand out from the crowd.



Not only does Glasscock Too offer a unique collection of designer clothing, but it also has an extensive selection of jewelry and handbags. For those in need of a last-minute fascinator to complete their outfit, the boutique has some beautiful pieces. With a variety of choices available, you can find the perfect fascinator that complements your ensemble and adds an extra touch of sophistication.

If you're uncertain about what to wear, don't worry - Jeff is always available to offer his expert advice and assist you in finding attire that fits you perfectly. His keen eye for fashion and knowledge of how to create outfits that flatter individual body types will ensure that you leave the store feeling great and looking your best!

Glasscock Too is a destination that shouldn't be overlooked in the delightful St. Matthews area. The friendly inviting environment captures the essence of the charm that defines the neighborhood.

[Click here](#) to see some of their latest fashions or visit their storefront at 155 Chenoweth Lane. To check out available homes in the St. Matthews area, [click here](#).

#### WHAT YOU GET IN LOUISVILLE

### \$400,000 - \$450,000

A look at how much house you get for your money in three different zip codes

40241

11000 Craigs Creek Place

3 bedrooms  
2.5 bathrooms  
2,503 square feet  
sold for \$401,000

\$160.21 PPSF



40222

215 Woodcleft Road

3 bedrooms  
3 bathrooms  
2,041 square feet  
sold for \$419,000

\$205.29 PPSF



40207

2504 Tamerlane Court

4 bedrooms  
2 bathrooms  
1,816 square feet  
sold for \$430,000

\$236.78 PPSF



Stacey Robinson

502.609.7246  
srobinson@kyselectproperties.com

