

MITSUBISHI GENUINE PARTS

"MITSUBISHI GENUINE PARTS" should be used exclusively for servicing your Mitsubishi engine.

"MITSUBISHI GENUINE PARTS" are superior and reliable because they have been produced under the excellent quality-control system, and have passed the strict inspections.

Imitation parts are not reliable from the viewpoints of their material and manufacturing method which are entirely incomparable with those of genuine parts.

A large assortment of "MITSUBISHI GENUINE PARTS" is always available at any of our authorized dealers, so do your ordering at your nearest dealer by specifying "MITSUBISHI GENUINE PARTS".

GUIDE FOR USE OF PARTS CATALOGUE

1. This Parts Catalogue contains service parts for the following Mitsubishi S4L,S4L2 diesel engine. The applicable engine type and serial number are as below:

ENGINE NAME	MODEL	USE · SPECIFICATION	APPLICABLE SERIAL NO.
S4L	Y162KL	For Excavator	44347 -UP
S4L2	Y162KL	For Excavator	57015 -UP

2. When ordering parts, give the Mitsubishi dealer or distributor the following information:
- (1) Part number (or assembly number) and part name.
 - (2) Quantity required
 - (3) Model and serial number

NOTE: In some cases a substitute part is furnished instead of the part ordered.

3. Indication of assembled bolts with washer

Of the standard bolts, those with washers are identified by the symbol "B/W" in the Description column of each list. (Part Name:BOLT, W/WASHER)

For the part numbers of the bolts and washers and those of bolts with washers, refer to the listing (beginning with the page D1) at the end of this parts catalogue. These bolts and washers should be ordered individually.

4. Indication of combination for replaceability —"G"—

The new part to be used in combination with the other part in place of an old part is identified by the symbol "G" in the interchangeability code column of each list.

For the parts to be combined, refer to the listing (beginning with E1) at the end of this parts catalogue.

5. For the numerical index, refer to the page beginning with C1 at the end of this parts catalogue.

6. Some illustration may have some difference from the real part shape when the illustration shows a representation of various parts.

7. The parts and part numbers are subject to change without prior notice.

SAMPLE OF PARTS CATALOGUE

GROUP NAME
 GROUP NUMBER → **01-01 CRANKCASE**

Applicable to serial NO. shown on cover and up if blank.

Model type

REF. NO.	PART NO.	R/P	S/E/Q/G	PARTNAME&DESCRIPTION	MODEL&QTY		APPLICABLE SERIAL NO.		M/R	V/R/D
					31NCA		FORM@-	-@UPTO		
1	MM4 09741	R	1	C RETAINER	1			-11000		
	MM4 34729			RETAINER	1			11001-		
2	MM4 30181	↑		BLOCK SUB ASSY	1					
2:01	MF 665538			CAP,SEARING	2					
2:02	MF 665543			CAP,SEARING	2					
2:03	MM4 36217	↑		BOLT, BEARING CAP	8					
2:04	*			CAP ASSY	1					
2:09	MM4 8176	↑		BUSHING	1					
3	MD 00268			C PIN,DOWEL	2				@12050	
	MM4 09645	↑	1	PIN,DOWEL	2			12051@		
4	MF 240051			BOLT,W/WASHER	3	B/W				

See (8) - a Description codes.

Quantity per unit

Applicable from serial No. indicated.

High-demand part. See (11)

Part newly changed or added. See (12)

Applicable up to 12051 (Scheduled) if suffixed with @ and sometimes differs from real serial No.

Applicable up to serial No. indicated.

Applicable up to 12051 (Scheduled) if prefixed with @ and sometimes differs from real serial No.

See (6) Change codes.

See (5) Sequence-of-change numbers.

See (4) Interchangerability code.

Part not to be supplied See (3)

See (2) Reference number.

NOTE : Some of model designations, number of variations and serial numbers, indicated above, are quoted from other parts catalogues.
 Read these items of information as those for this parts catalogue.

NOTE : For the description of each item, refer to the pages which follow.

HOW TO USE THIS PARTS CATALOGUE

(to be referred to together with the former SAMPLE OF PARTS CATALOGUE)

(1)
01 CYLINDER HEAD

REF. NO.	PART NO.	R/P	S/C	E/N	G	MODEL & QTY			APPLICABLE SERIAL NO.		M/R	R/D
						S4L	S4L2		FROM@-	-@UPTO		
1	31A01-21060						1	.				
2	*						1	.				
201	MD000245						1	.				
202	MF665538						4	.				
203	*						7	.				

The items (1) thru (12) are as described below :

(1) Compiling system

The systems of a unit are grouped according to their location in the unit. The groups, each identified by group number, are listed in the order by CONTENTS. Each group is preceded by an "exploded view" which clearly illustrates each part in its correct relation to the other parts in the illustration.

(2) Reference number

Abbreviated to "REF.No.," this number is used to locate a part in the illustration. In cases where the reference number is of three to four figures, the first and second figures show the reference number of an assembly, and the last two figures show the numbers of its component parts.

(3) Part numbers

The part numbers shown in this parts catalogue are those assigned to genuine Mitsubishi parts.

NOTE : Parts with asterisk (*) are not supplied individually.

(4) Interchangeability codes

The interchangeability codes used in this parts catalogue are as follows :

PART NO.	Code (R/P)	DESCRIPTION
A (Old) B (New)	R	B (new part) and A (old part) are mutually interchangeable
A (Old) B (New)	1	A (old part) is not supplied. B (new part) can be substituted for A (old part) .
A (Old) B (New)	3	B (new part) can be substituted for A (old part) . [A (old part) cannot be substituted for B (new part) .]
A (Old) B (New)	N	B (new part) and A (old part) are not interchangeable.
A (Old) B (New)	G	B (new part) can be substituted for A (old part) in combination with other part (s) . (For the parts to be combined, refer to the listing beginning with the page E1 at the end of this parts catalogue.)

(5) Sequence of change numbers

The parts are changed for improved quality or performance. Their changes are indicated in sequence by numerals (1. 2. 3 …) .

Blank : Original

1 : 1st change

2 : 2nd change

3 : 3rd change

(6) Change codes

These codes indicate the reason or purpose of changes of the parts.

A : Added part (a part entered into service)

C : Change of part number

D : Deleted part (a part applicable upto the serial no. expressed in Serial No. column)

E : Added part except above reasons

Q : Change of quantity

(7) Part name

Abbreviations are sometimes used. For the abbreviations, refer to TABLE OF SYMBOLS & ABBREVIATIONS appeared in hind pages of this general information chapter.

NOTE : The locational terms L.H (left hand) and R.H (right hand) are as these directions viewed from the Flywheel side of an engine.

(8) Description & specification codes

(a) Description codes (expressed in the first part of Description column) .

B / W : Assembled bolt (with washer)

K I T : Part supplied as a kit

S T D : Standard part

O P T : Optional part

A R : Part used, as required or by selection or in adjusted quantity for necessity

S F N : Semi-finished part

(b) The Description codes in above paragraph (a) are followed by supplementary explanation such as dimensions (thickness, length, etc) , manufacturer part number, manufacturer name, etc. as occasion demands.

NOTE : Unless otherwise indicated, the dimensions are shown in millimeter and the name of unit is abbreviated.

(Examples) Thickness : T = 1.00 Length : L = 1000 ;
Width : W = 1500 Height : H = 500

(c) Specification codes

Each specification or type of model and/or selective specifications of a unit are indicated by codes of three figures. For these codes, refer to LIST OF SPECIFICATION CODES appeared in hind pages of this general information chapter.

NOTE : Unless indicated by the specification codes, the parts may be used for the products of all specification.

(Examples) A10 : For diesel fuel

(d) The parts indicated as "NOT SHOWN", such as component parts of overhaul gasket kit, are not shown in the illustration.

(9) Model & quantity

- (a) Model : Model, type, specification, destination, etc. of product to which a parts catalogue applies are indicated in the title column of each variation.
- (b) Quantity : Quantity of part or assembly and its component parts required for one unit of product is indicated.

NOTE : In case "AR" appears in QTY column, it is required to adjust quantity for use.

(10) Applicable serial numbers

Applicable serial numbers of engine are indicated in the "UPTO" or "FROM" column. Serial numbers with "@" are scheduled ones and sometimes differ from the real serial numbers. If the "FROM" column is blank, the part is applicable to serial number shown on this cover and up.

(11) Management rank

Parts ranked as "A" are high-demand parts. This ranking is to be referred to by dealers, and is devised to facilitate and rationalize their distribution, stocking and inventory of the parts.

(12) Parts changed or added after the last parts list that has been published are identified by "V."

TABLE OF SYMBOLS & ABBREVIATIONS

SYMBOL	DESCRIPTION
ACCEL	ACCELERATOR
ADJ	ADJUSTING (ADJUSTABLE)
AIR-CON	AIR-CONDITIONER
ASSY	ASSEMBLY
ATT	ATTACHMENT
AUTO	AUTOMATIC
AUX	AUXILIARY
AR	AS REQUIRED
B/H	BACKHOE
BATT	BATTERY
BRG	BEARING
B/PMP	BILGE PUMP
BRKT	BRACKET
BUSH	BUSHING
CARB	CARBURETOR
C/L	CENTERLINE
COMPR	COMPRESSOR
CON-ROD	CONNECTING-ROD
C/MBR	CROSS-MEMBER
CYL	CYLINDER
DIA	DIAMETER
DIFF	DIFFERENTIAL
DISTR	DISTRIBUTOR
DR	DRIVE
D=	OUT DIAMETER

SYMBOL	DESCRIPTION
ELEC	ELECTRIC
ENG	ENGINE
EQUIP	EQUIPMENT
EXH	EXHAUST
E/TNK	EXPANSION TANK
FITT	FITTING
FLEX	FLEXIBLE
FR	FRONT
GSKT	GASKET
GEN	GENERATOR
GOV	GOVERNOR
G/N	GROUP NUMBER
H/EXCH	HEAT EXCHANGER
HEX	HEXAGON
HYD	HYDRAULIC
H=	HEIGHT
IND	INDUSTRIAL
INJ	INJECTION
INSTAL	INSTALLATION
INST	INSTRUMENT
INTLK	INTERLOCK
JUNC	JUNCTION
KD	KNOCKDOWN
L.H	LEFT HAND
LUB	LUBRICATION
L=	LENGTH

SYMBOL	DESCRIPTION
MANF	MANIFOLD
MAX	MAXIMUM
M.L.H	MAXIMUM LIFTING HEIGHT
MIN	MINIMUM
MTR	MOTOR
MTG	MOUNTING
NO.	NUMBER
OPT	OPTION
O/D	OVER DRIVE
O.S	OVERSIZE
PTO	POWER TAKE-OFF
P/S	POWER STEERING
PRESS	PRESSURE
P/N	PART NUMBER
QTY	QUANTITY
RAD	RADIATOR
RE	REAR
REG	REGULATOR
REV	REVERSE
R.H	RIGHT HAND
REF.NO.	REFERENCE NUMBER
R/N	REFERENCE NUMBER
S/PMP	SEA WATER PUMP
SECT	SECTION
S/MBR	SIDEMEMBER

TABLE OF SYMBOLS & ABBREVIATIONS

SYMBOL	DESCRIPTION	SYMBOL	DESCRIPTION	SYMBOL	DESCRIPTION
STD	STANDARD	1ST	FIRST		
SUPT	SUPPORT	2ND	SECOND		
SYM	SYMBOL	3RD	THIRD		
SYNCH	SYNCHRONIZER	4TH	FOURTH		
SYS	SYSTEM	5TH	FIFTH		
TEMP	TEMPERATURE	&	AND		
TERM	TERMINAL	@	UNCONFIRMED		
T/CONV	TORQUE-CONVERTER	*	PART NOT TO BE SUPPLIED		
T/F	TRANSFER				
T/M	TRANSMISSION				
T/HSG	TURBINE-HOUSING				
T/C	TURBOCHARGER				
T=	THICKNESS				
U/BODY	UNDERBODY				
U.S	UNDERSIZE				
UNIV	UNIVERSAL				
VAC	VACUUM				
VENT	VENTILATOR				
W/STRIP	WEATHERSTRIP				
W/	WITH				
W/O	WITHOUT				
W/W	WOODWARD				
W/PMP	WATER PUMP				
W=	WIDTH				
Z=	NUMBER OF GEAR TEETH				

TABLE OF MAKER'S NAME

BAS or ZXL	Bosch Automotive System Corp. (OLD:Zexel Corp.)	NKC	Nikko Electric Industry Co.,Ltd.
DEN or NDC	DENSO Corp. (OLD:Nippon denso Co.,Ltd.)	MEC	Mitsubishi Electric Corp.
NCC	Niigata Converter Co., Ltd.	SEC	Sawafuji Electric Co.,Ltd.
		MPC	Mikuni Precision Co.,Ltd.

C O N T E N T S

GROUP NO.	GROUP NAME	PAGE
ENGINE BODY		
01-01	CYLINDER HEAD (FOR S4L).....	2
01-02	CYLINDER HEAD (FOR S4L2).....	4
04-01	VALVE MECHANISM.....	6
04-02	ROCKER COVER & CAMSHAFT.....	8
07-01	CRANKCASE ASSY.....	10
07-02	CRANKCASE.....	12
11	TIMING GEAR CASE.....	14
13	OIL PAN.....	16
17	MAIN MOVING PARTS.....	18
23	TIMING GEAR.....	20
INLET & EXHAUST SYSTEM		
30	INLET & EXHAUST MANIFOLD.....	22
OIL SYSTEM		
35	OIL PUMP.....	24
36	OIL SYSTEM.....	26
COOLING SYSTEM		
45	COOLING SYSTEM.....	28
FUEL SYSTEM		

GROUP NO.	GROUP NAME	PAGE
61-01	FUEL SYSTEM.....	30
61-02	NOZZLE & NOZZLE HOLDER.....	32
61-03-01	INJECTION PUMP (FOR S4L).....	34
61-03-02	INJECTION PUMP (FORS4L2).....	36
GOVERNOR SYSTEM		
63	GOVERNOR.....	38
ELECTRIC PARTS		
66-01	ELECTRIC PARTS.....	40
66-02-01	STARTER (12V-2.0KW) (E/# @58179).....	42
66-02-02	STARTER (12V-2.0KW) (E/# 58543@).....	44
68	ALTERNATOR (12V-50A).....	46
CONTROL SYSTEM		
87	CONTROL SYSTEM.....	48
INSTRUMENT PARTS		
90	INSTRUMENT.....	50
ACCESSORY		
92-01	ACCESSORY.....	58
92-02	ACCESSORY (FOR SEDIMENTER).....	54
92-03	ACCESSOTY (FOR RADIATOR).....	56
REPAIR PARTS		
94	OVERHAUL GASKET KIT.....	58

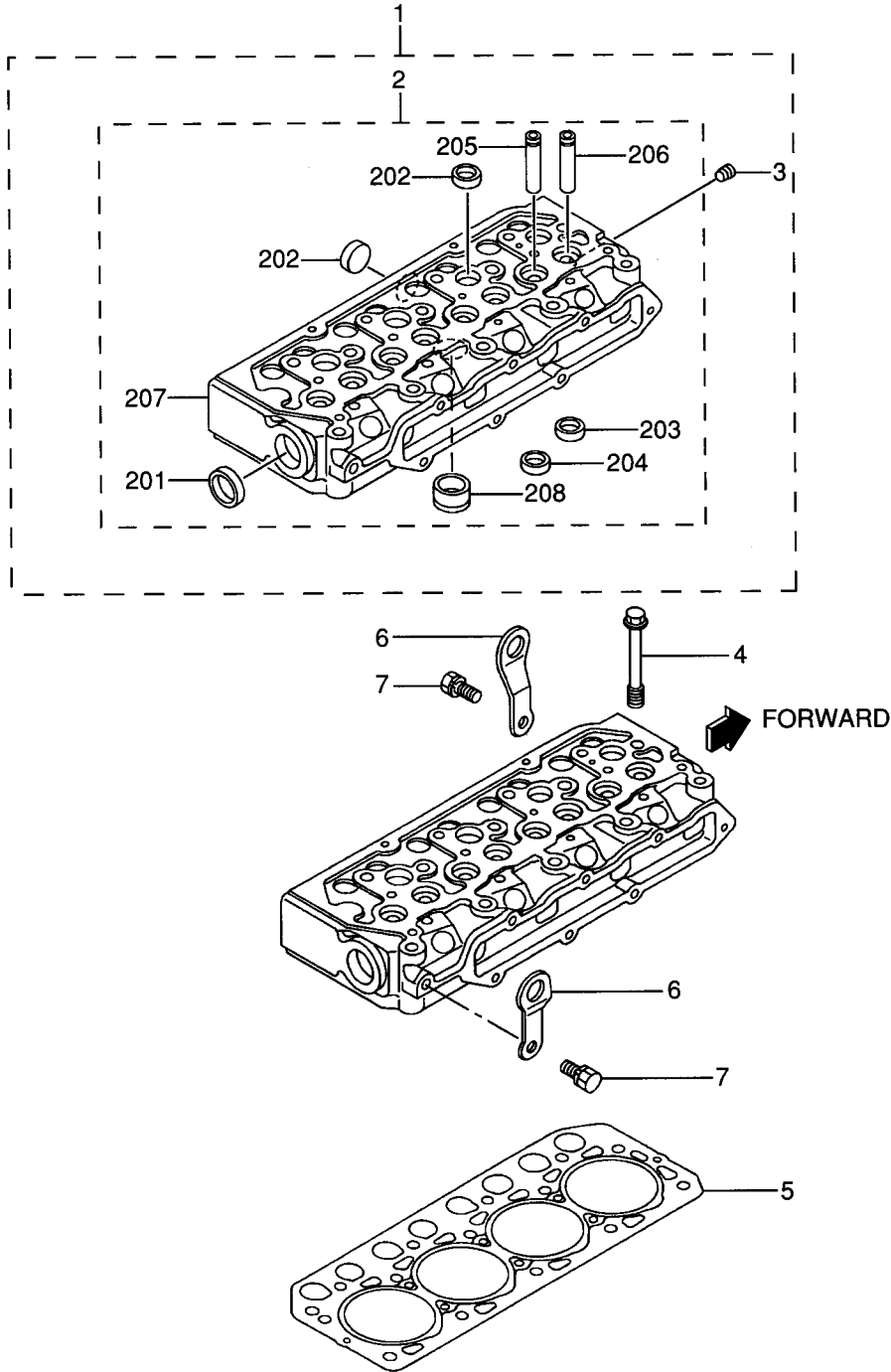
GROUP NO.	GROUP NAME	PAGE
	NUMERICAL PARTS INDEX.....	C1
	TABLE OF BOLT,W/WASHER.....	D1

MEMO

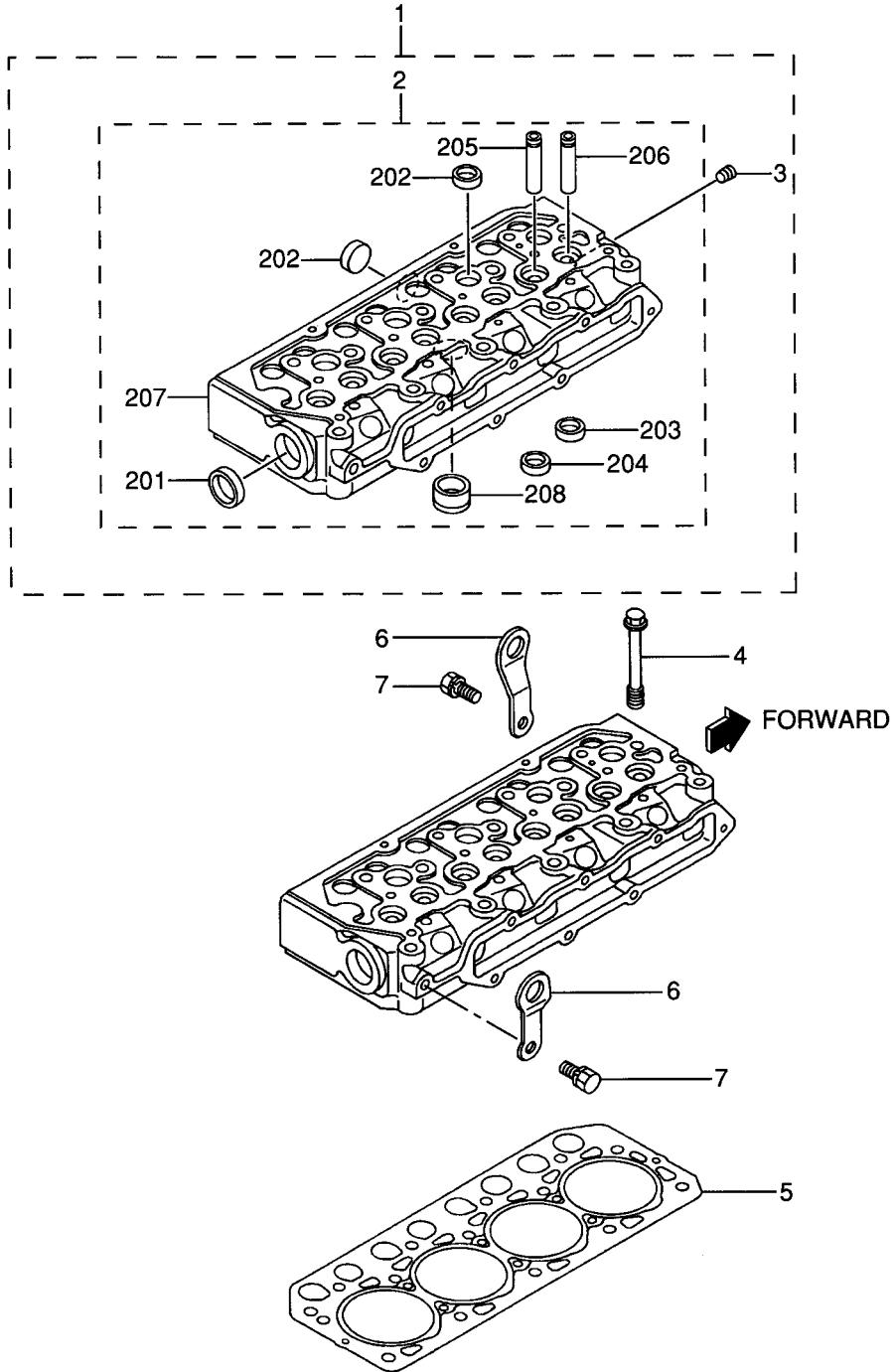
A series of horizontal dotted lines for writing, bounded by solid lines at the top and bottom.

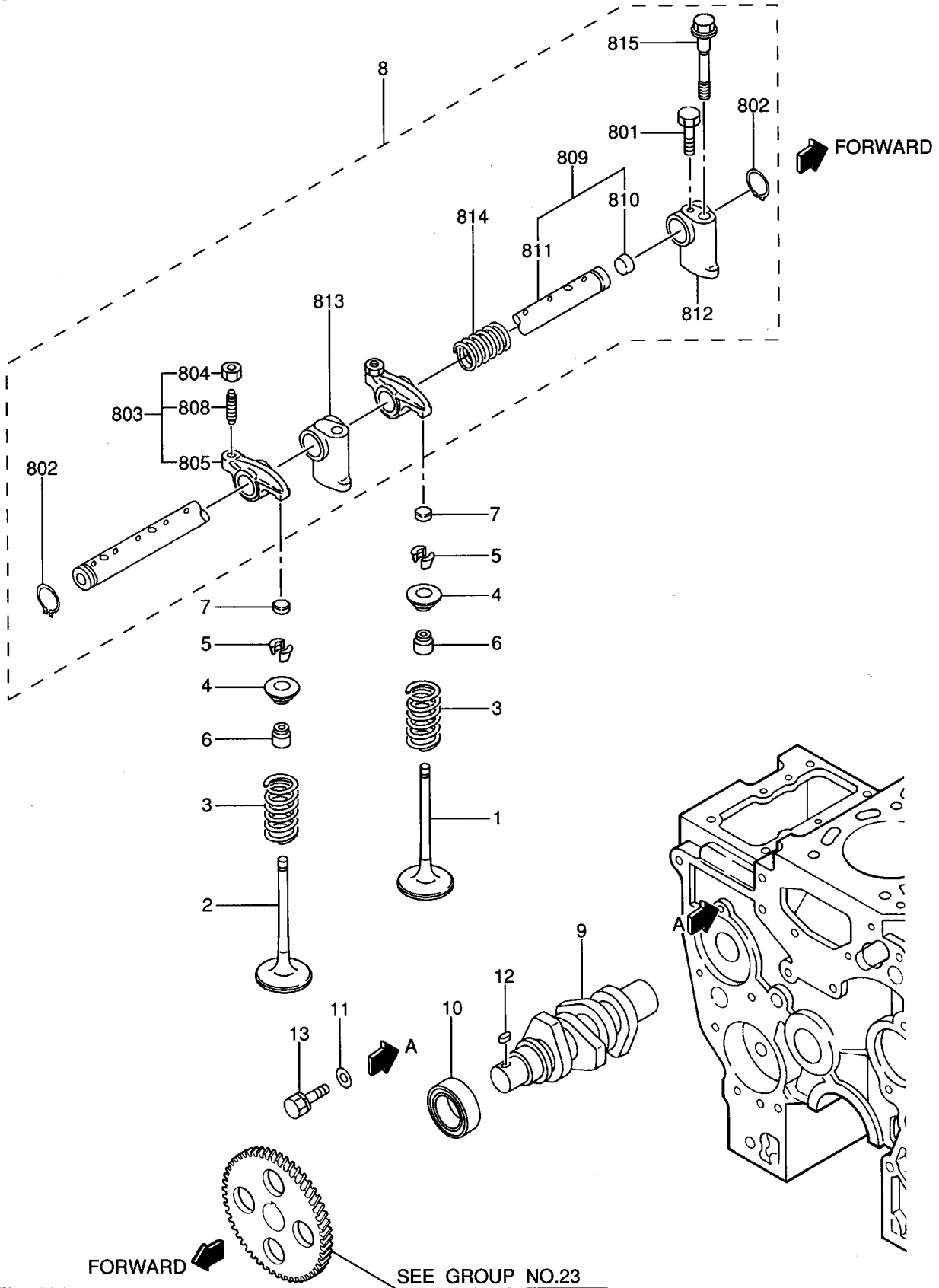
01-01 CYLINDER HEAD (FOR S4L)

- 2-



01-02 CYLINDER HEAD (FOR S4L2)





04-01

VALVE MECHANISM

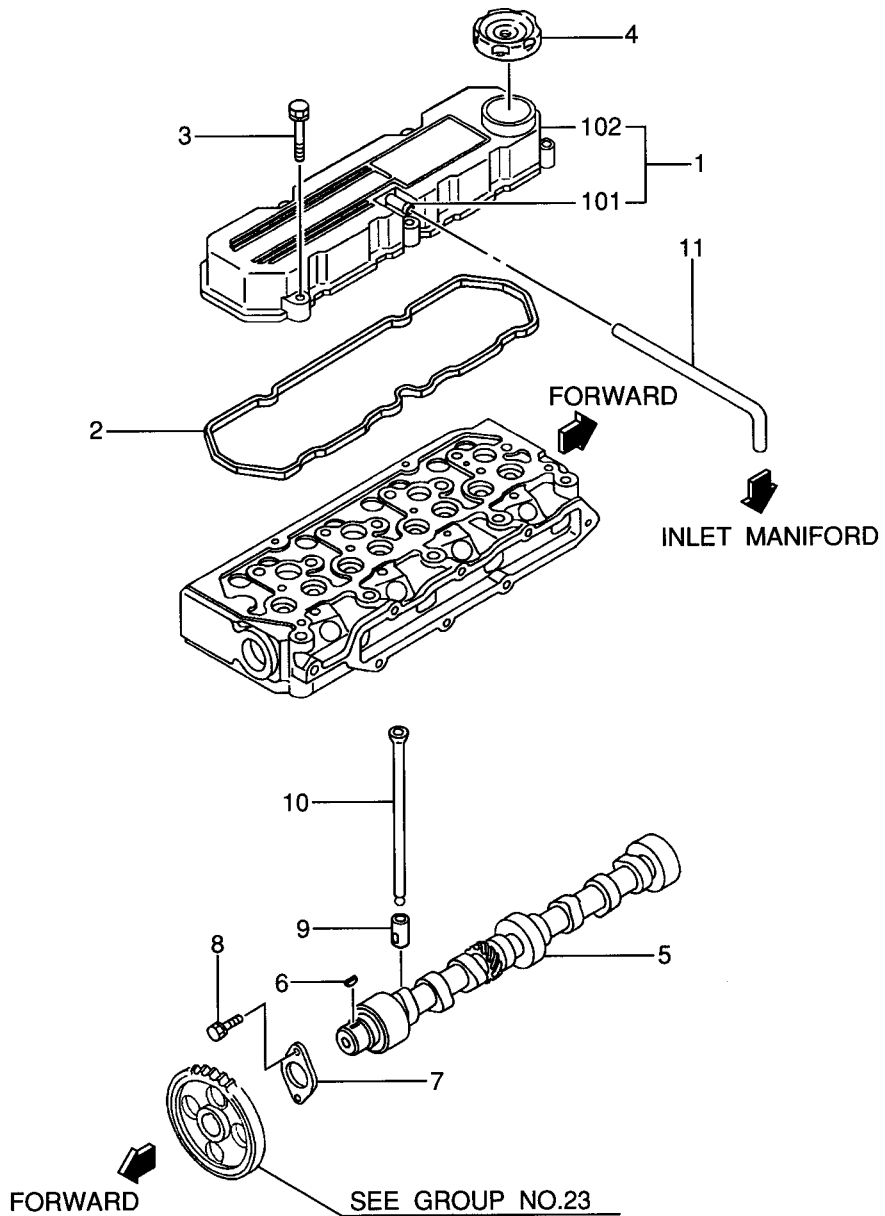
- 7-

REF. -NO.	PART NO.	R S P Q C E N G	PART NAME & DESCRIPTION	MODEL&QTY			APPLICABLE SERIAL NO.		M V R D
				S4L	S4L2		FROM@-	-@UPTO	
1	31A04-30100		VALVE, INLET	4	4				
2	31A04-20200		VALVE, EXHAUST	4	4				
3	31A04-01301		SPRING, VALVE	8	8				A
4	MM433306		RETAINER, VALVE STEM	8	8				
5	MD016483		LOCK, VALVE SPRING	16	16				
6	MD115472		SEAL, VALVE STEM	8	8				A
7	31A04-00700		CAP, VALVE STEM	8	8				
8	31A04-30043		ROCKER & SHAFT ASSY	1	1				
801	F1035-05010		BOLT	1	1				A
802	MF522010		RING, SNAP	2	2				A
803	31A04-11024		ROCKER ASSY	8	8				
804	F2325-08000		NUT, JAM	8	8				A
805	*		ROCKER ARM	8	8				
808	32A04-02401		SCREW, ROCKER	8	8				
809	31A04-21010		SHAFT ASSY, ROCKER	1	1				
810	MD021204		CAP, SEALING	2	2				
811	*		SHAFT, ROCKER	1	1				
812	31A04-34100		BRACKET, ROCKER SHAFT	1	1				
813	31A04-34300		BRACKET, ROCKER SHAFT	3	3				
814	32C04-04500		SPRING, ROCKER	3	3				
815	32C04-06100		BOLT, ROCKER BRACKET	4	4				
9	31A65-11200		SHAFT, FUEL INJ PUMP	1	1				
10	MD703856		BEARING, RADIAL BALL	1	1				A
11	MD000425		WASHER	1	1				A
12	MF476018		KEY, SUNK	1	1				
13	F1805-08016		BOLT, W/WASHER B/W	1	1				A

01-05-07

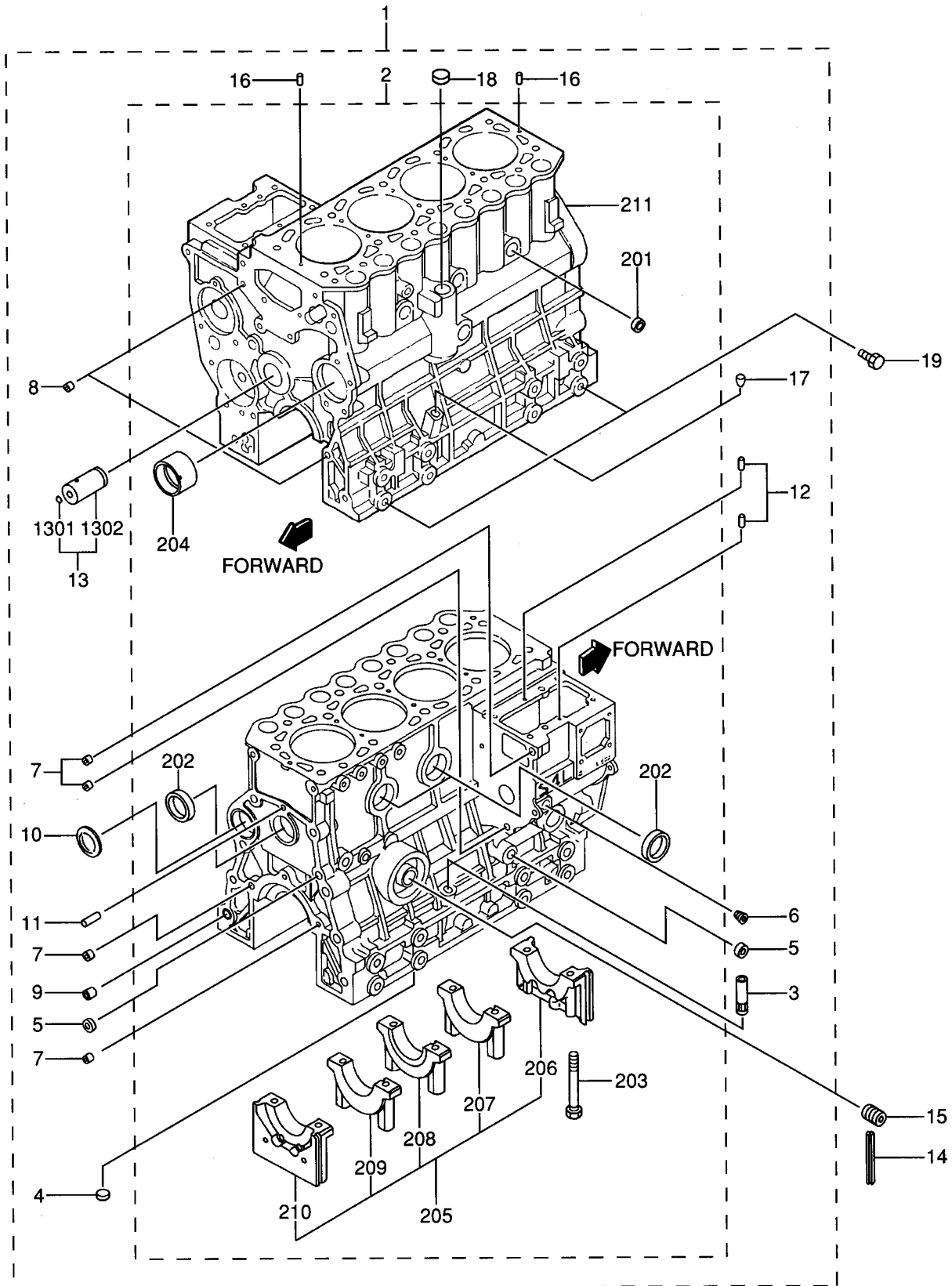
615K01-00

04-02 ROCKER COVER & CAMSHAFT



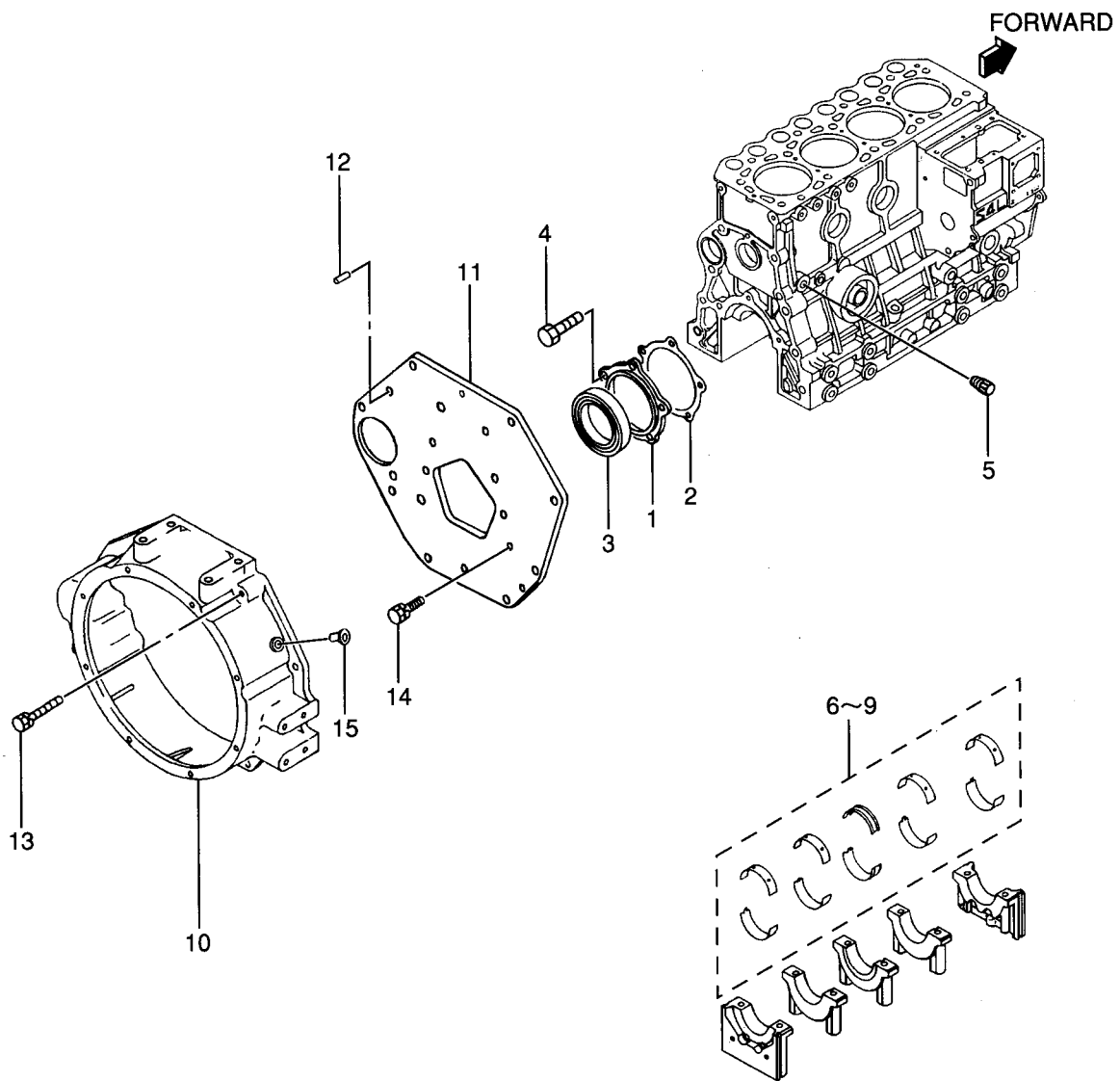
07-01 CRANKCASE ASSY

- 10-

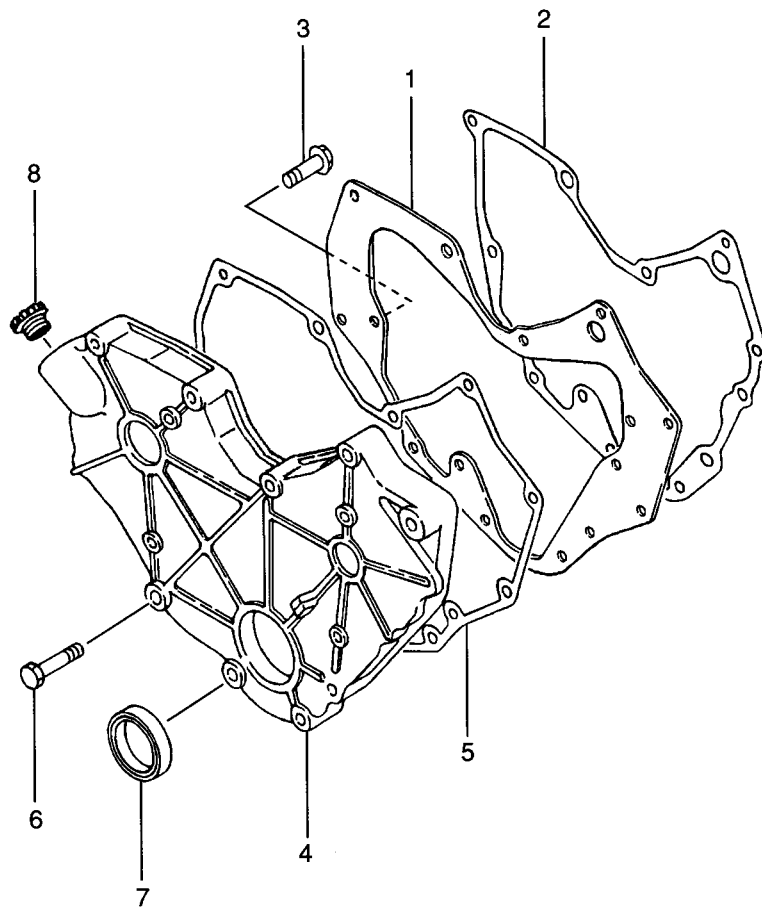


07-01 CRANKCASE ASSY

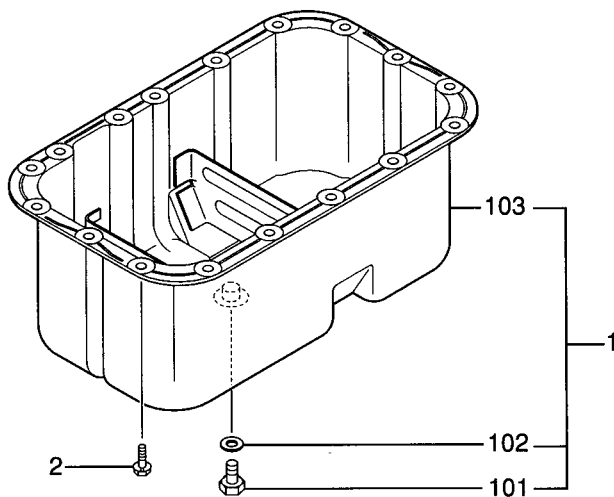
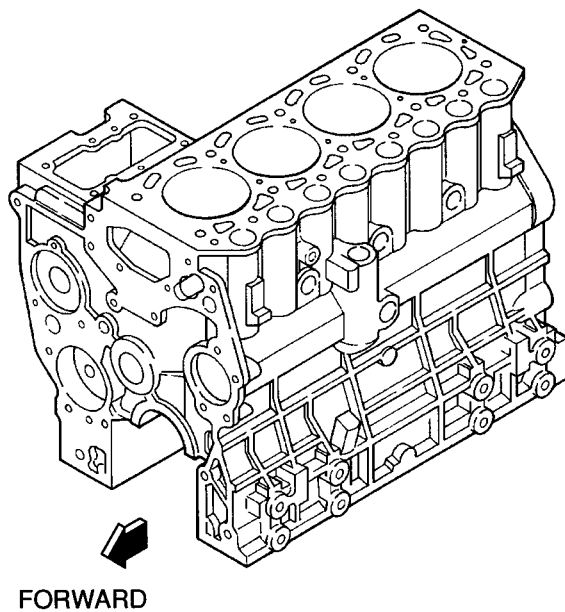
REF. NO.	PART NO.	R/S P/ENG	PART NAME & DESCRIPTION	MODEL & QTY			APPLICABLE SERIAL NO.		M/R D
				S4L	S4L2		FROM@-	-@UPTO	
1	31A07-52021		BLOCK ASSY,CYLINDER	1	1				
2	*		BLOCK SUB ASSY,CYL	1	1				
201	04826-22000		CAP,SEALING	3	3				
202	04826-23500		CAP,SEALING	3	3				
203	31A07-00801		BOLT,METAL CAP	10	10				A
204	31A07-03100		BUSH,CAMSHAFT	1	1				
205	*		CAP SET,METAL	1	1				
206	*		CAP,METAL FRONT	1	1				
207	*		CAP,METAL NO.2	1	1				
208	*		CAP,METAL NO.3	1	1				
209	*		CAP,METAL NO.4	1	1				
210	*		CAP,METAL REAR	1	1				
211	*		BLOCK,CYLINDER	1	1				
3	MM430613		GUIDE,OIL LEVEL GAGE	1	1				
4	MF665532		CAP,SEALING	1	1				
5	MF665533		CAP,SEALING	3	3				
6	MS661140		PLUG,TAPER	1	1				A
7	MS471104		BUSHING,KNOCK	4	4				
8	MS471105		BUSHING,KNOCK	2	2				
9	MS471110		BUSHING,KNOCK	1	1				
10	MF665511		PLUG,EXPANSION	1	1				A
11	MF472404		PIN,DOWEL	1	1				A
12	MM409645		PIN,DOWEL	2	2				A
13	31A23-00051		SHAFT ASSY, IDLER	1	1				
1301	F8000-08000		BALL, STEEL	1	1				A
1302	*		SHAFT, IDLER	1	1				
14	31A07-12200		SEAL,SIDE	4	4				
15	30L07-00700		SHAFT,OIL FILTER	1	1				
16	F2846-05000		PIN,DOWEL	2	2				A
17	MD024256		PLUG,TAPER	1	1				A
18	MF665537		CAP,SEALING	1	1				
19	F1035-12025		BOLT	4	4				A



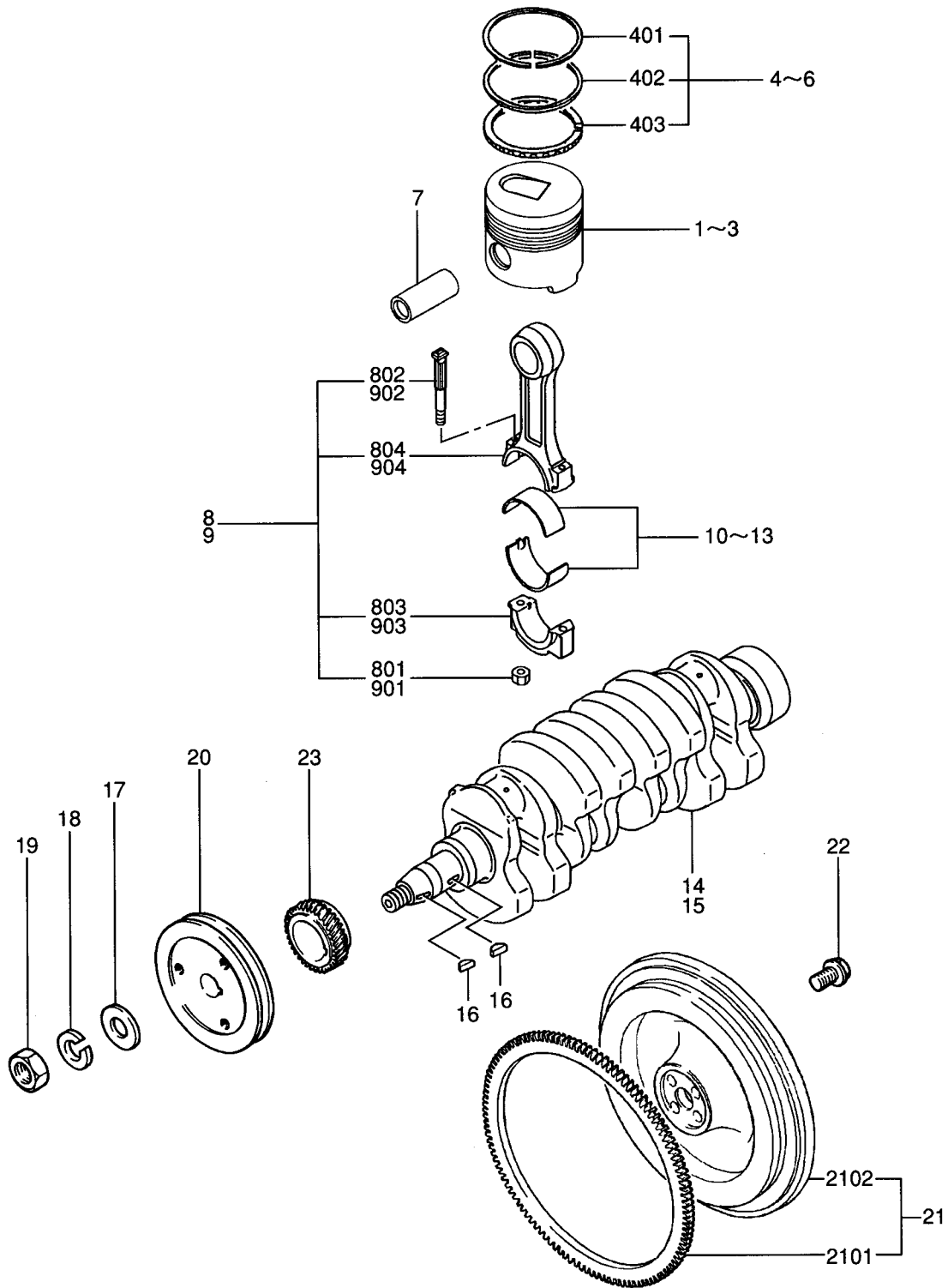
TIMING GEAR CASE



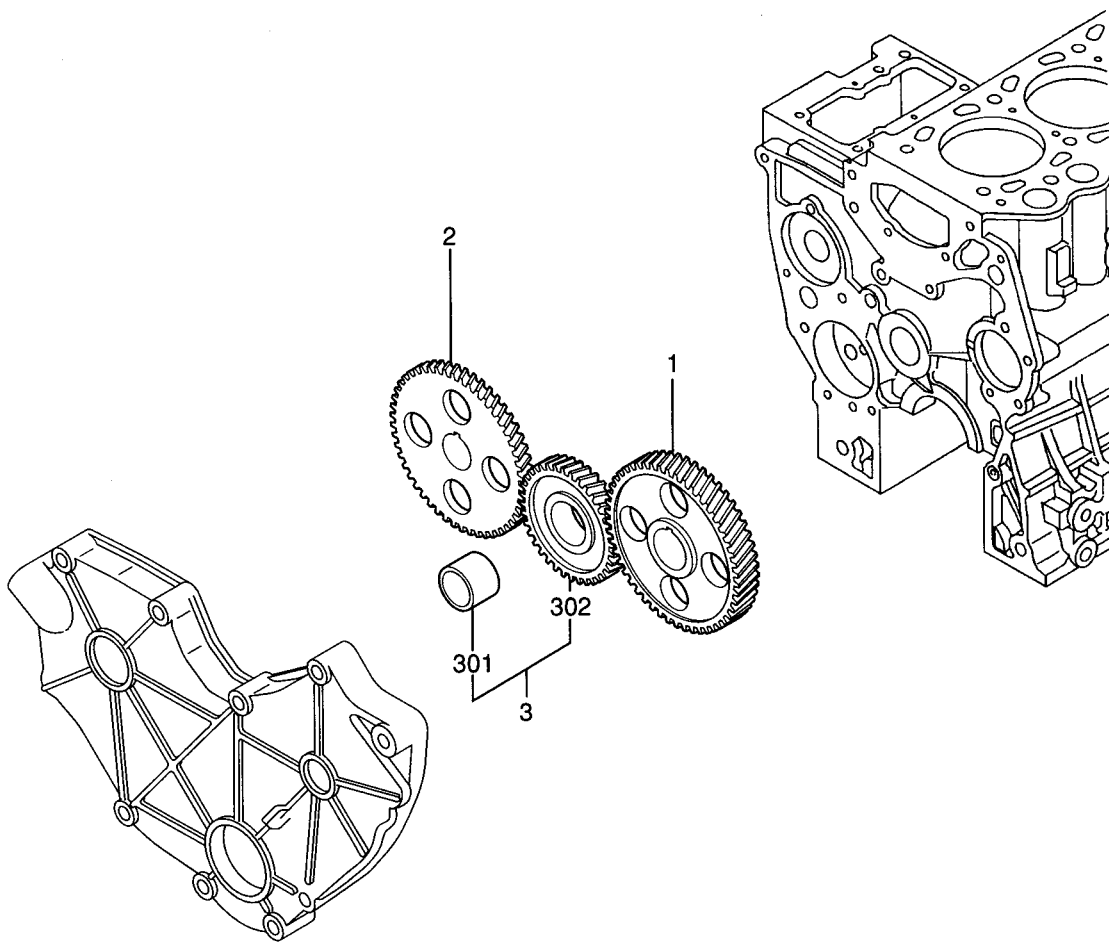
OIL PAN



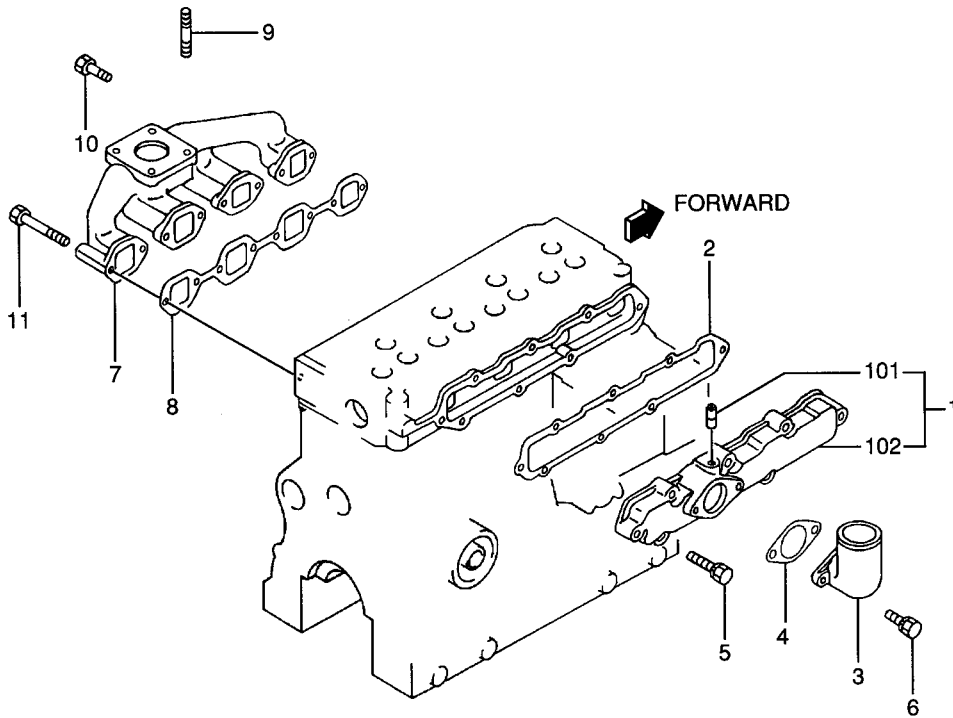
MAIN MOVING PARTS

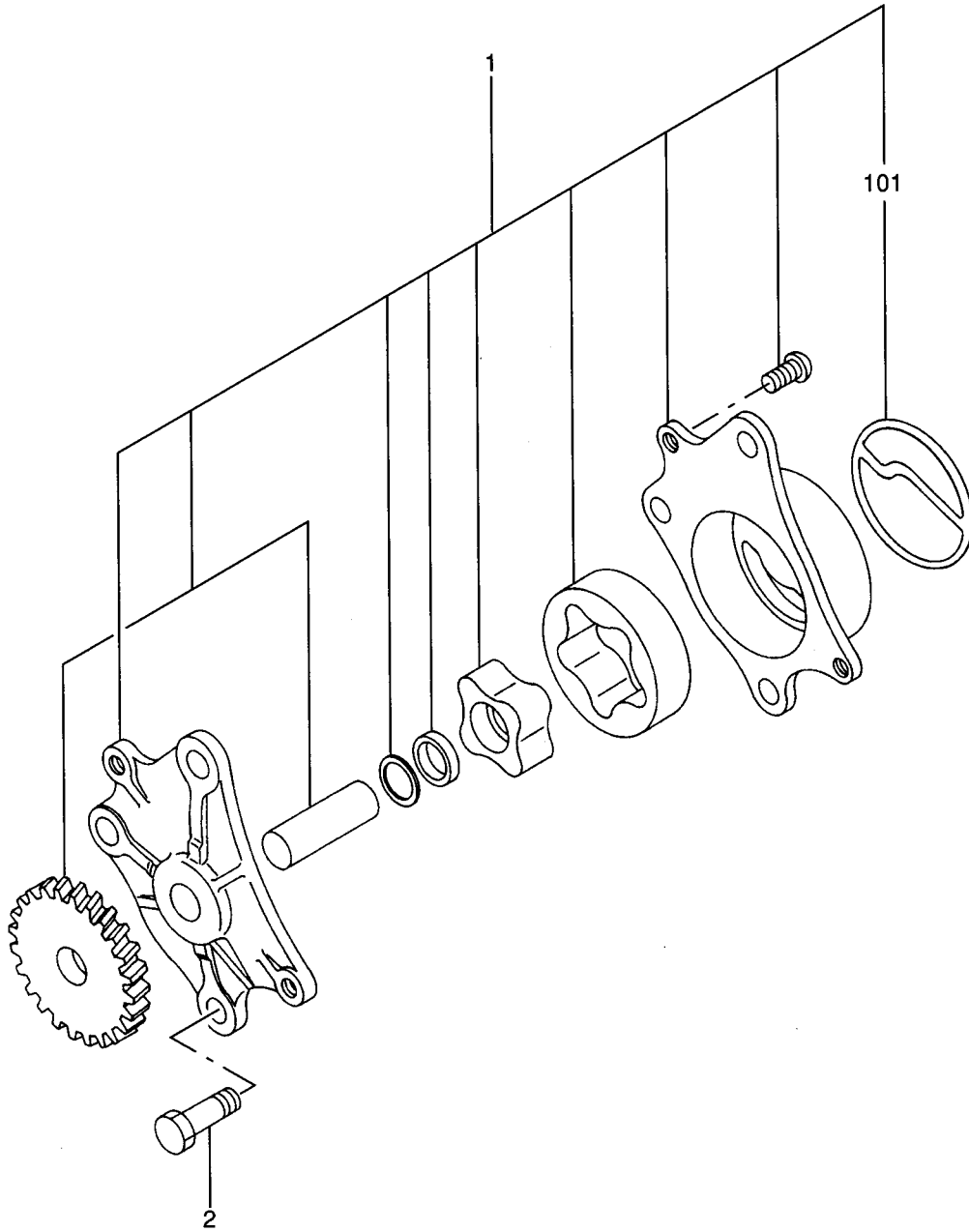


REF. -NO.	PART NO.	R S E N G P Q	PART NAME & DESCRIPTION	MODEL&QTY			APPLICABLE SERIAL NO.		M V R D
				S4L	S4L2		FROM@-	-@UPTO	
1	31A17-11100		PISTON STD	4	4				A
2	31A17-11200		PISTON O.S 0.25	4	4				A
3	31A17-11300		PISTON O.S 0.50	4	4				A
4	MM433921		RING SET,PISTON STD	4	4				A
401	*		RING,PISTON NO.1	4	4				
402	*		RING,PISTON NO.2	4	4				
403	*		RING ASSY,OIL	4	4				
5	MM433922		RING SET,PISTON O.S 0.25	4	4				A
6	MM433923		RING SET,PISTON O.S 0.50	4	4				A
7	31A17-10602		PIN,PISTON	4	4				A
8	31A19-10024		ROD ASSY,CONNECTING	4	.				
801	MD006704		NUT,CONNECTING ROD	8	.				A
802	MD021105		BOLT,CONNECTING ROD	8	.				A
803	*		CAP,CONNECTING ROD	4	.				
804	*		CONNECTING ROD	4	.				
9	31A19-01023		ROD ASSY,CONNECTING	.	4				
901	MD006704		NUT,CONNECTING ROD	.	8				A
902	MD021105		BOLT,CONNECTING ROD	.	8				A
903	*		CAP,CONNECTING ROD	.	4				
904	*		CONNECTING ROD	.	4				
10	MM437305		METAL SET,CON-ROD STD	4	4				A
11	30A19-00010		METAL SET,CON-ROD U.S 0.25	4	4				A
12	30A19-00020		METAL SET,CON-ROD U.S 0.50	4	4				A
13	30A19-00030		METAL SET,CON-ROD U.S 0.75	4	4				A
14	31A20-00102		CRANKSHAFT	1	.				
15	31A20-00200		CRANKSHAFT	.	1				
16	MF476215		KEY,WOODRUFF	2	2				
17	MF450010		WASHER,PLAIN	1	1				A
18	MF450410		WASHER,SPRING	1	1				A
19	MF430126		NUT	1	1				A
20	31A20-02400		PULLEY,CRANKSHAFT	1	1				
21	31A21-01040		FLYWHEEL SUB ASSY	1	1				
2101	MD024812		GEAR,RING	1	1				
2102	*		FLYWHEEL	1	1				
22	MD952231		BOLT,DRIVE PLATE	4	4				A
23	31A23-03300		GEAR,CRANKSHAFT Z=28	1	1				

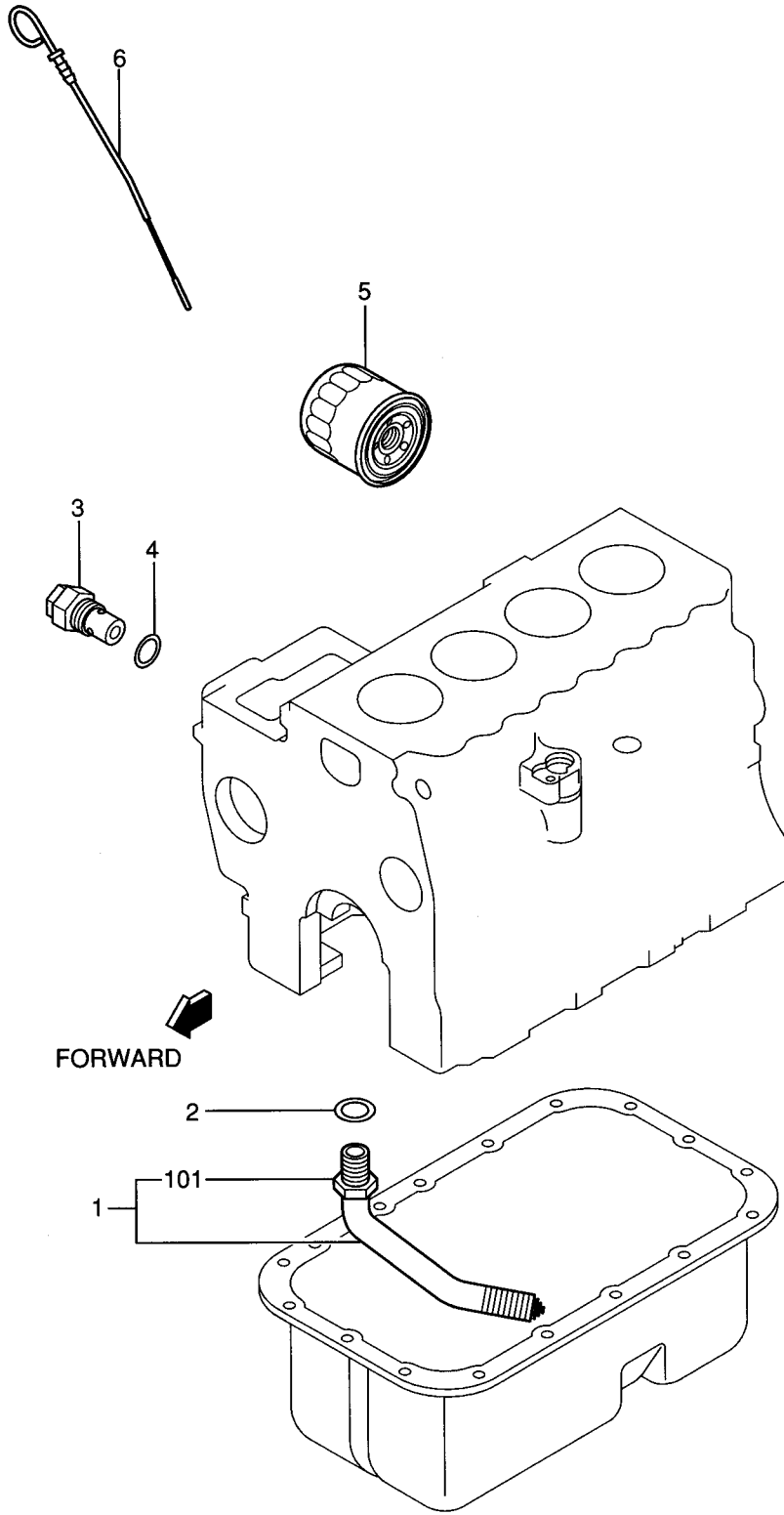


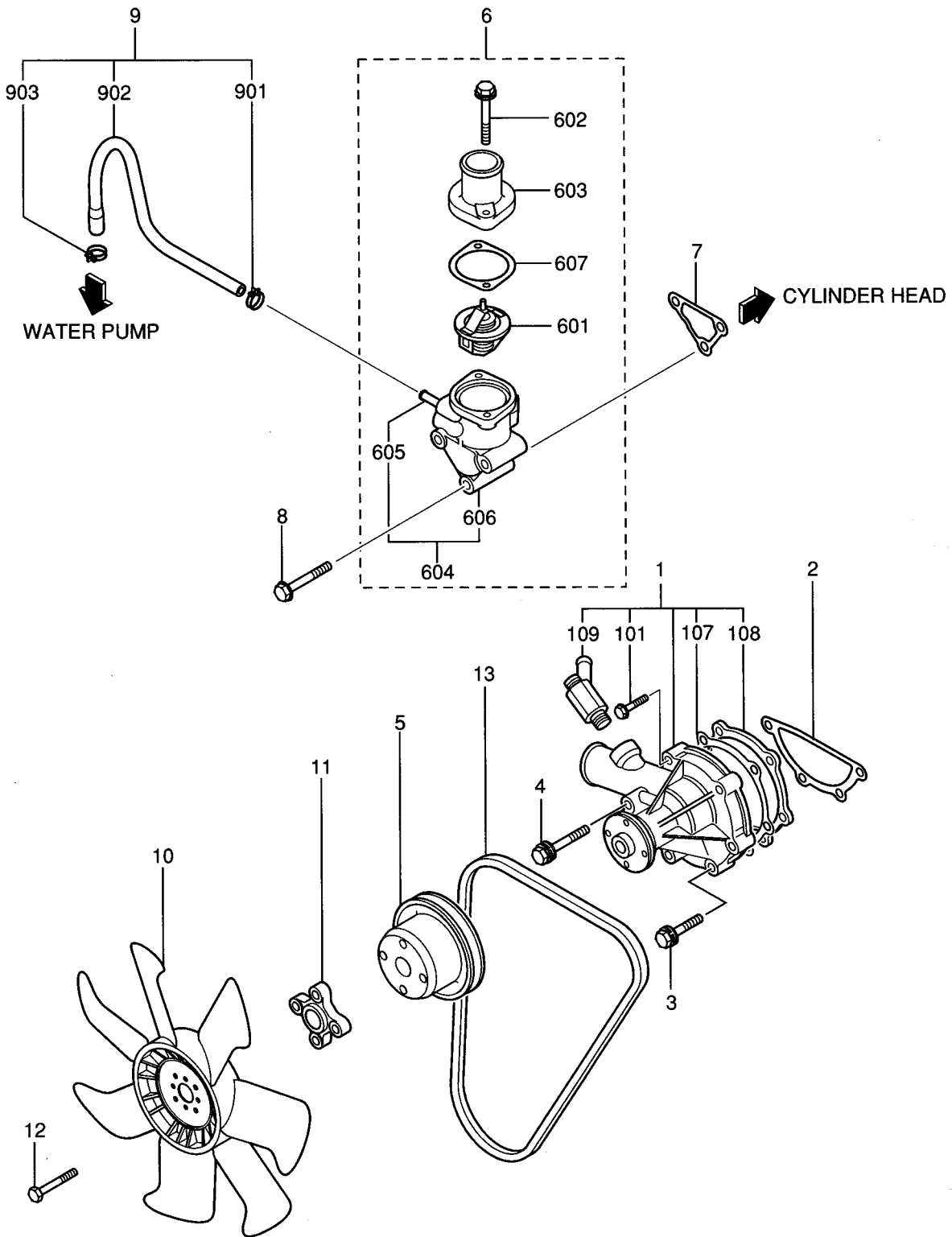
INLET & EXHAUST MANIFOLD





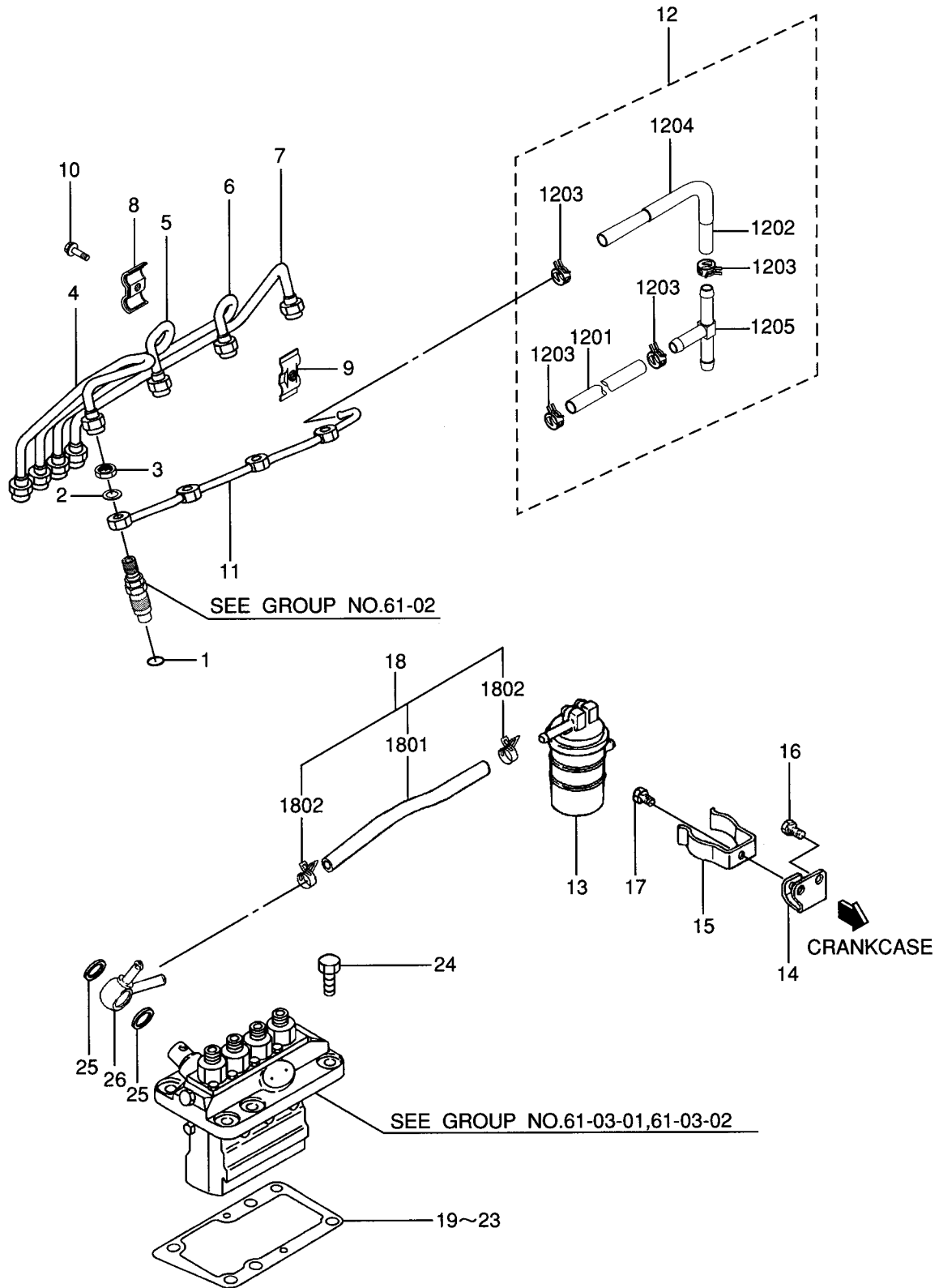
NOTE ; The shaft and inner rotor and gear which are force fitted to each other are not to be supplied individually.





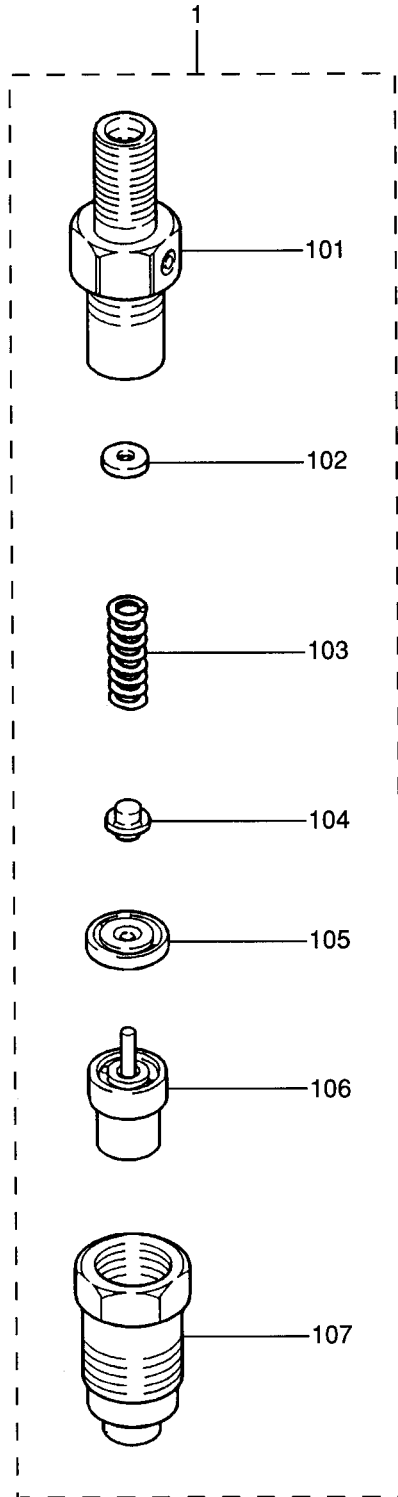
61-01 FUEL SYSTEM

- 30-



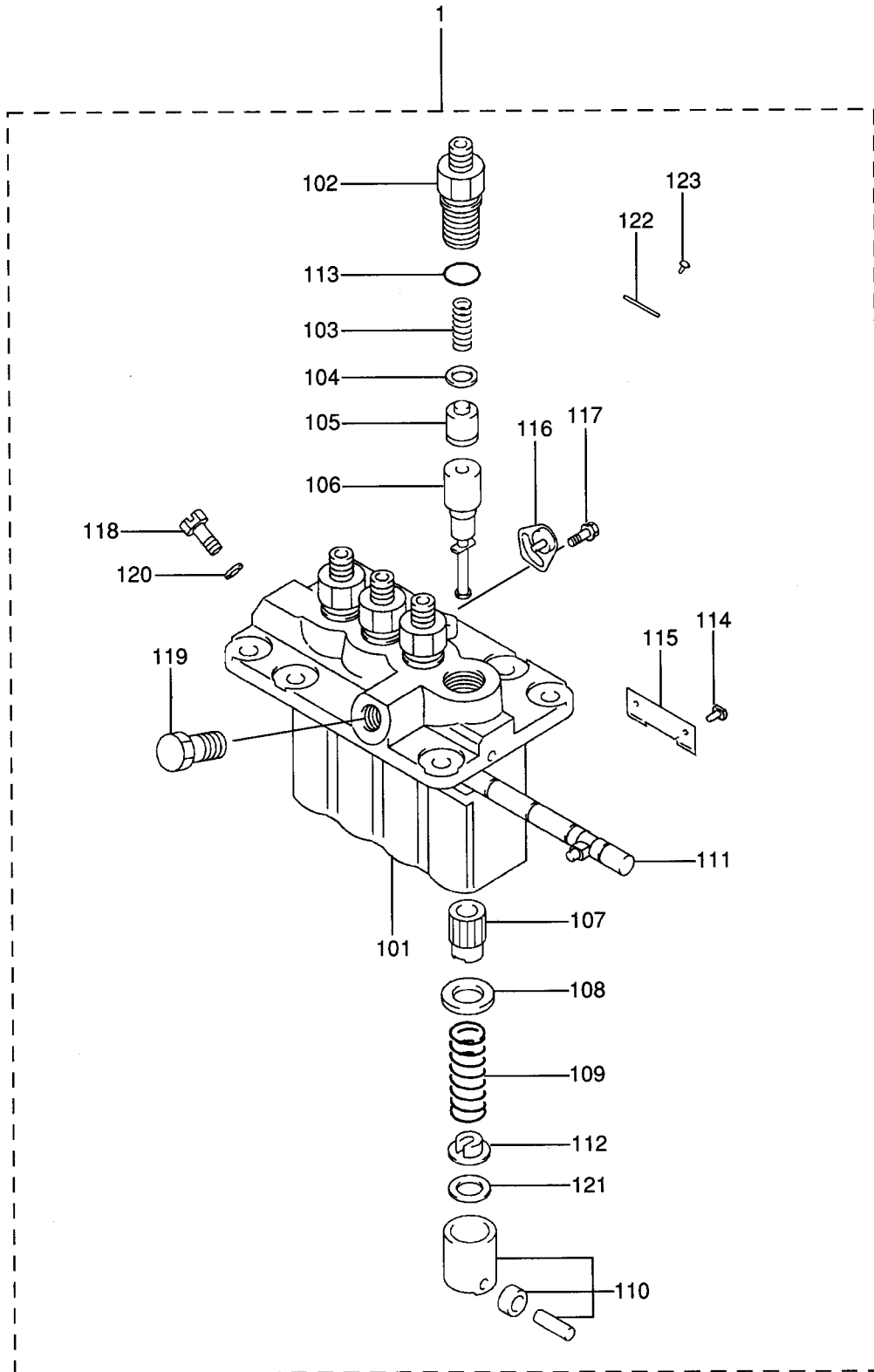
61-01 FUEL SYSTEM

REF. NO.	PART NO.	R S E N G P Q	PART NAME & DESCRIPTION	MODEL&QTY			APPLICABLE SERIAL NO.		M V R D
				S4L	S4L2		FROM@-	-@UPTO	
1	MD070717		GASKET,HOLDER	4	4				A
2	MD068355		GASKET,FUEL RETURN	4	4				A
3	MD068353		NUT	4	4				A
4	31A61-04100		PIPE,INJECTION NO.1	1	1				
5	31A61-04200		PIPE,INJECTION NO.2	1	1				
6	31A61-04300		PIPE,INJECTION NO.3	1	1				
7	31A61-04400		PIPE,INJECTION NO.4	1	1				
8	MM430703		CLAMP (A)	3	3				
9	MM430614		CLAMP (B)	3	3				
10	F1825-06025		BOLT,W/WASHER B/W	3	3				A
11	31A61-12600		PIPE,FUEL LEAK-OFF	1	1				
12	31A61-03500		HOSE	1	1				
1201	MM430131		HOSE,FUEL	1	1				
1202	MS604043		HOSE,FUEL	1	1				
1203	MS660169		CLIP,HOSE	4	4				A
1204	31A61-01200		HOSE,RUBBER	1	1				A
1205	31A61-01500		JOINT,THREE WAY	1	1				
13	MM435190		FILTER ASSY,FUEL	1	1				A
14	MM409121		SUPPORT,FILTER	1	1				
15	MM400880		CLAMP,FILTER	1	1				
16	F1805-08016		BOLT,W/WASHER B/W	2	2				A
17	F1805-06012		BOLT,W/WASHER B/W	1	1				A
18	MM409066		HOSE ASSY,FUEL	1	1				
1801	MS602047		HOSE,FUEL	1	1				
1802	MS660163		CLIP,HOSE	2	2				A
19	MM409036		SHIM T=0.7	AR	AR				
20	MM409037		SHIM T=0.8	AR	AR				A
21	MM409038		SHIM T=0.9	AR	AR				A
22	MM409039		SHIM T=1.0	AR	AR				A
23	MM409031		SHIM T=0.2	AR	AR				A
24	F1035-08020		BOLT	6	6				A
25	MK661-14000		WASHER,SEAL	2	2				A
26	MM437140		COLLAR,UNION	1	1				



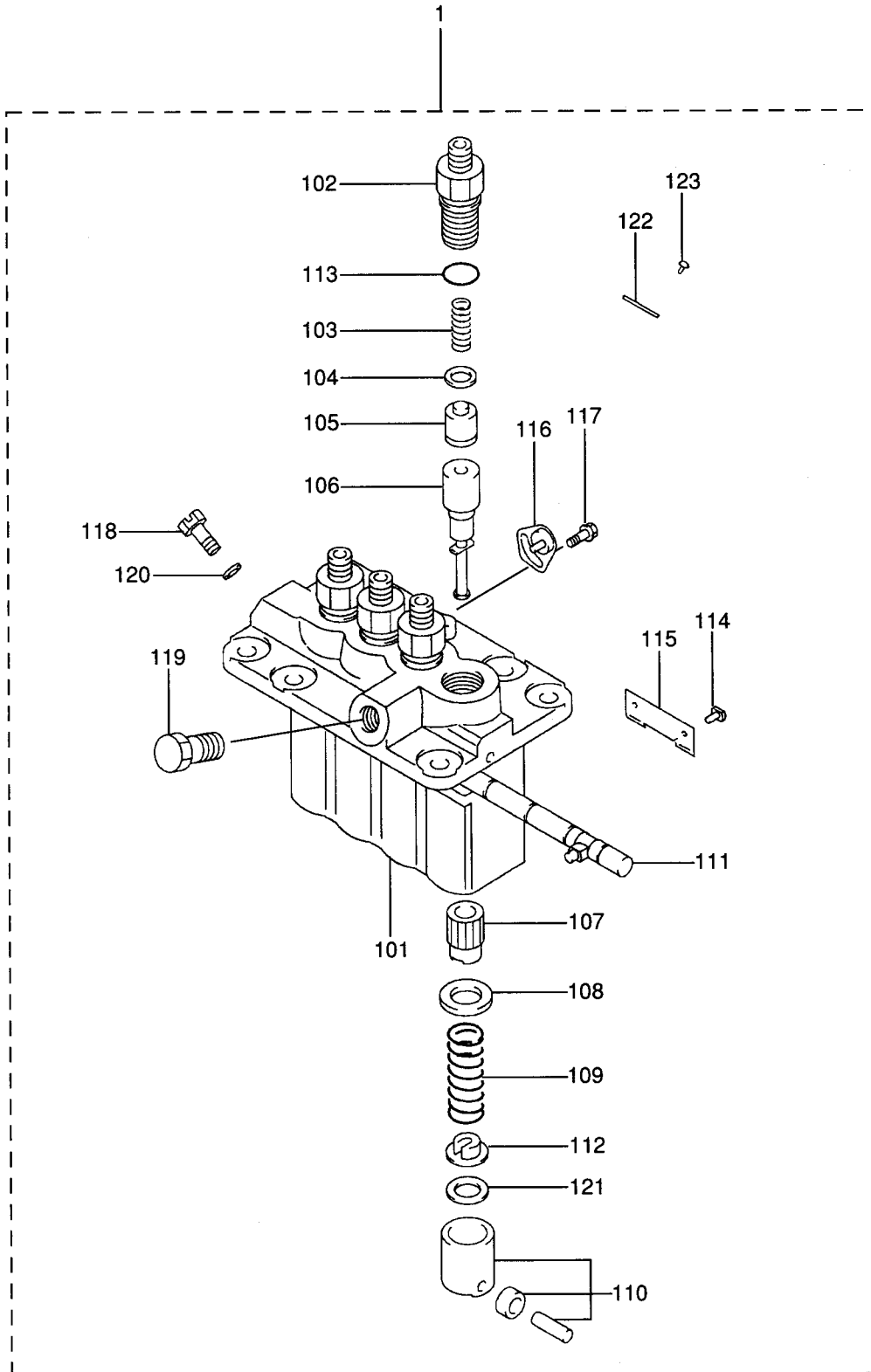
61-03-01 INJECTION PUMP (FOR S4L)

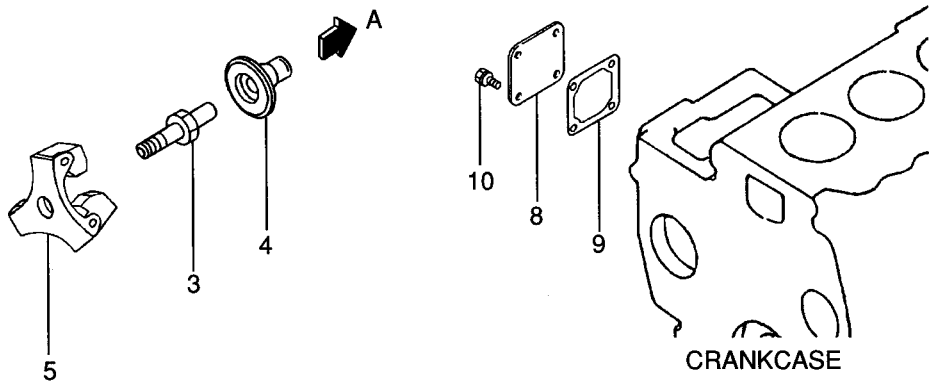
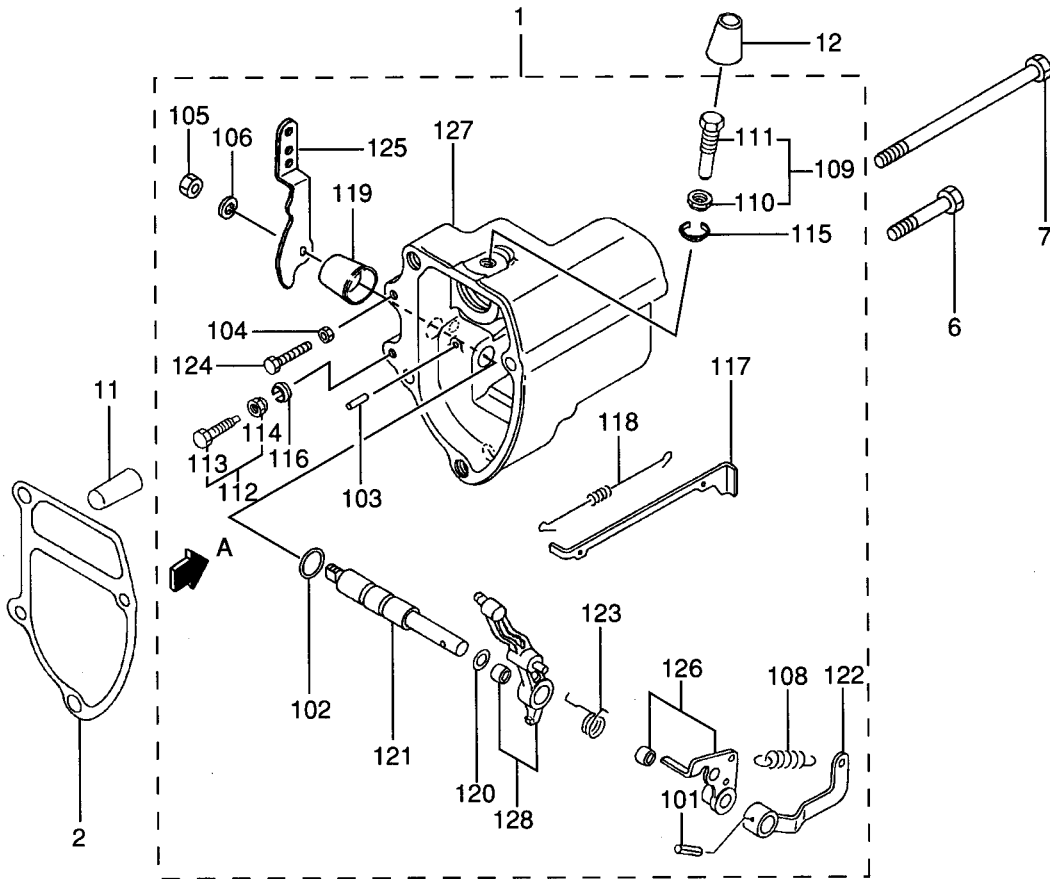
- 34-



61-03-02 INJECTION PUMP (FOR S4L2)

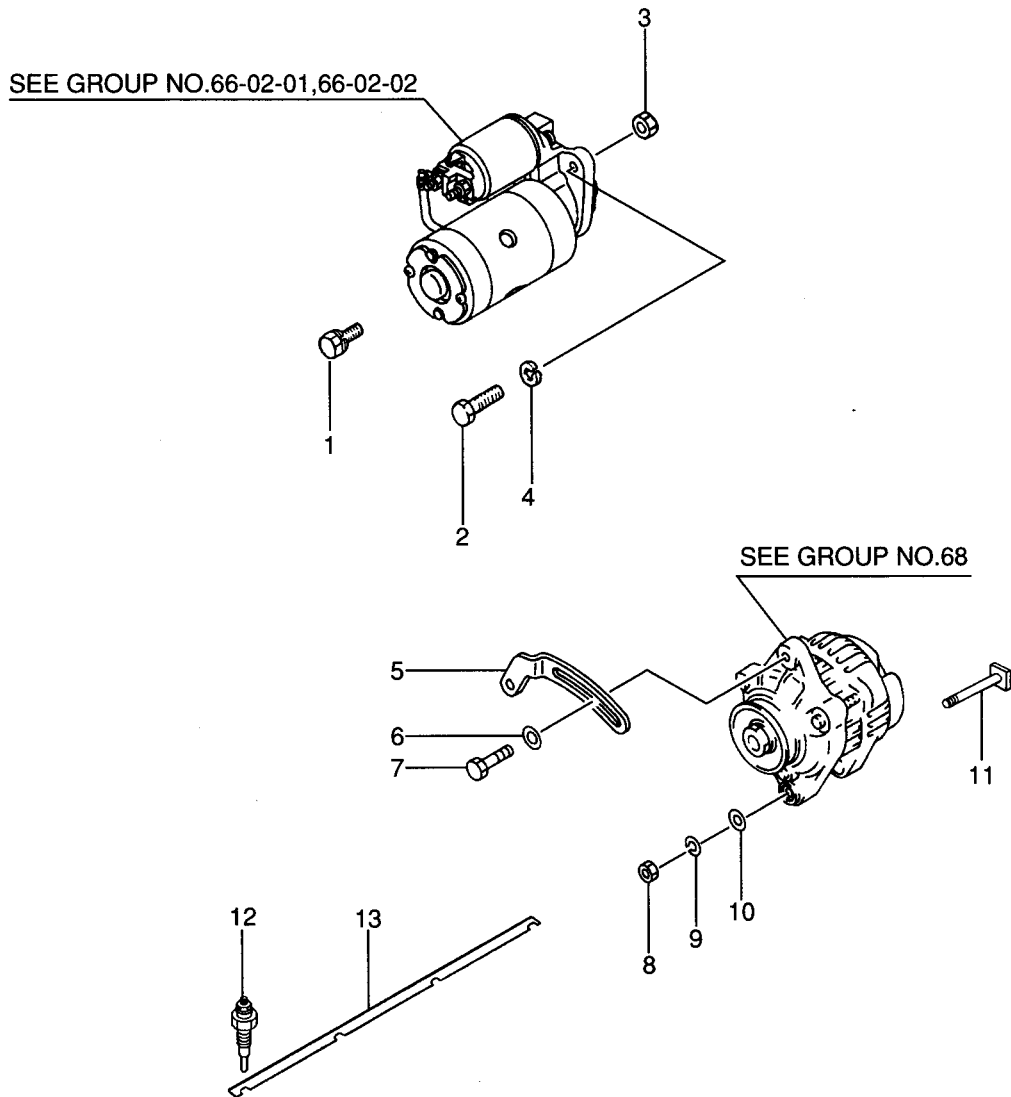
- 36-



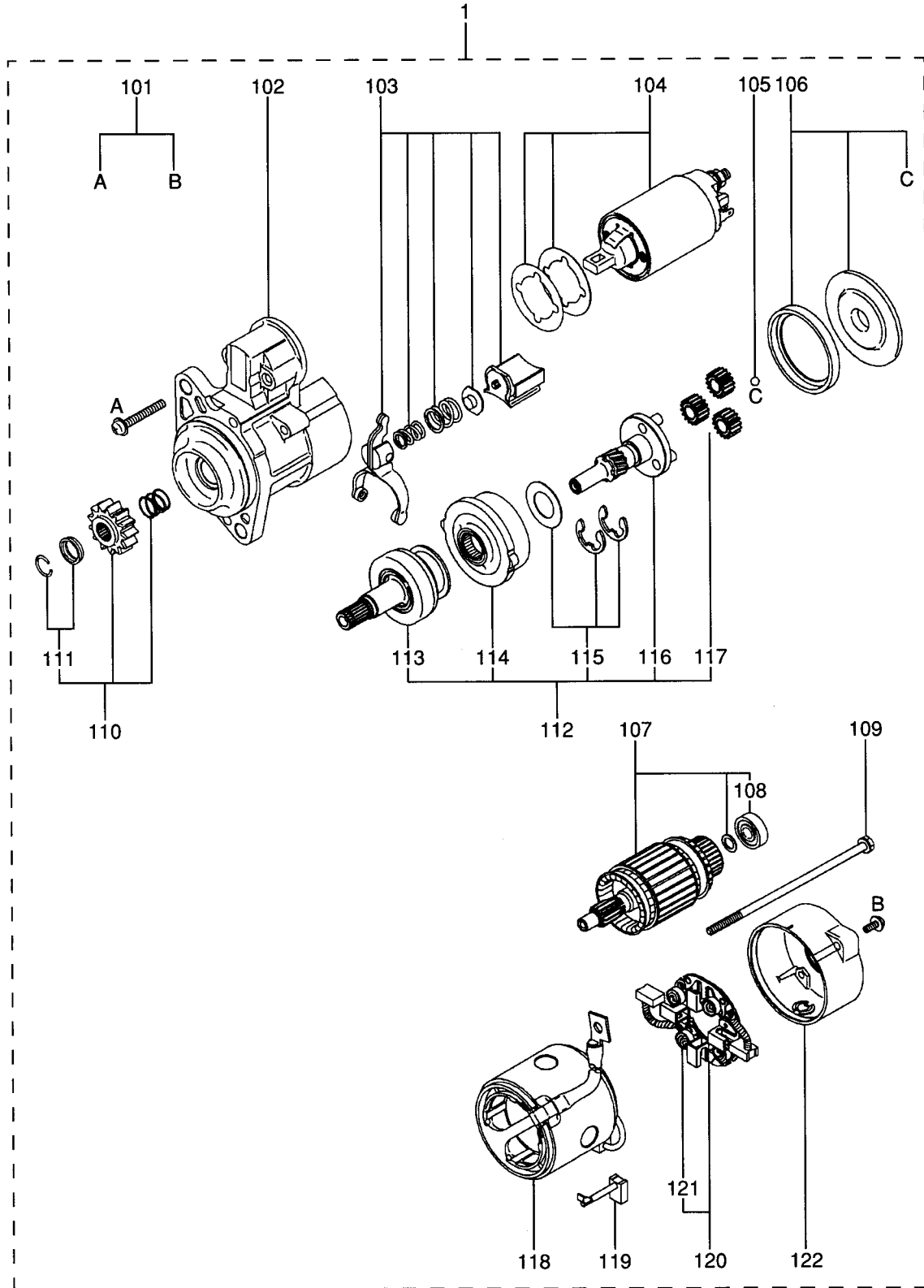


REF. -NO.	PART NO.	R / P S E N G	PART NAME & DESCRIPTION	MODEL & QTY			APPLICABLE SERIAL NO.		M / R D
				S4L	S4L2		FROM@-	-@UPTO	
1	31A63-03020		CASE ASSY, GOVERNOR	1	1				
101	F2850-03020		PIN, SPRING	1	1				A
102	F3150-01010		O-RING	1	1				A
103	K8712630		PIN, GROOVED	1	1				
104	MF430004		NUT	1	1				A
105	MF430725		NUT, JAM	1	1				A
106	MF450405		WASHER, SPRING	1	1				A
108	MM433673		SPRING, GOVERNOR	1	1				A
109	30L63-00020		SCREW ASSY, RACK SET	1	1				A
110	30L63-00600		NUT, TORQUE SET	1	1				
111	31A63-05601		SCREW, RACK SET	1	1				
112	30L63-00030		BOLT ASSY, HIGH SPEED	1	1				A
113	30L63-02100		BOLT, HIGH SPEED SET	1	1				
114	30L63-02300		NUT, HIGH SPEED SET	1	1				
115	30L63-00700		C-RING, TORQUE SET	1	1				
116	30L63-02600		C-RING, HIGH SPEED	1	1				
117	31A63-00400		TIE-ROD	1	1				
118	31A63-00500		SPRING, TIE-ROD	1	1				
119	31A63-01800		COVER, GOVERNOR SHAFT	1	1				
120	31A63-02400		SHIM, GOVERNOR SHAFT	1	1				
121	31A63-02600		SHAFT, GOVERNOR	1	1				
122	31A63-02700		LEVER, GOV SPRING	1	1				
123	31A63-06200		SPRING, START	1	1				A
124	31A63-07900		BOLT, LOW IDLE SET	1	1				
125	31A63-11301		LEVER, SPEED CONTROL	1	1				
126	31A63-00071		LEVER ASSY, TENSION	1	1				
127	31A63-22100		CASE, GOVERNOR	1	1				
128	31A63-10090		LEVER ASSY, GOVERNOR	1	1				
2	31A63-12201		GASKET, GOVERNOR CASE	1	1				
3	31A63-10305		SHAFT, SLIDING SLEEVE	1	1				
4	31A63-20201		SLEEVE, SLIDING	1	1				
5	31A63-11061		WEIGHT ASSY, GOVERNOR	1	1				
6	F1035-08045		BOLT	3	3				A
7	31A63-02300		BOLT, GOVERNOR CASE	1	1				
8	MM409150		COVER, TIE-ROD	1	1				
9	30A63-00101		GASKET, TIE-ROD COVER	1	1				
10	F1805-06014		BOLT, W/WASHER B/W	4	4				A
11	30L63-02400		COVER, HIGH SPEED SET	1	1				
12	30L63-00800		COVER, TORQUE SET	1	1				

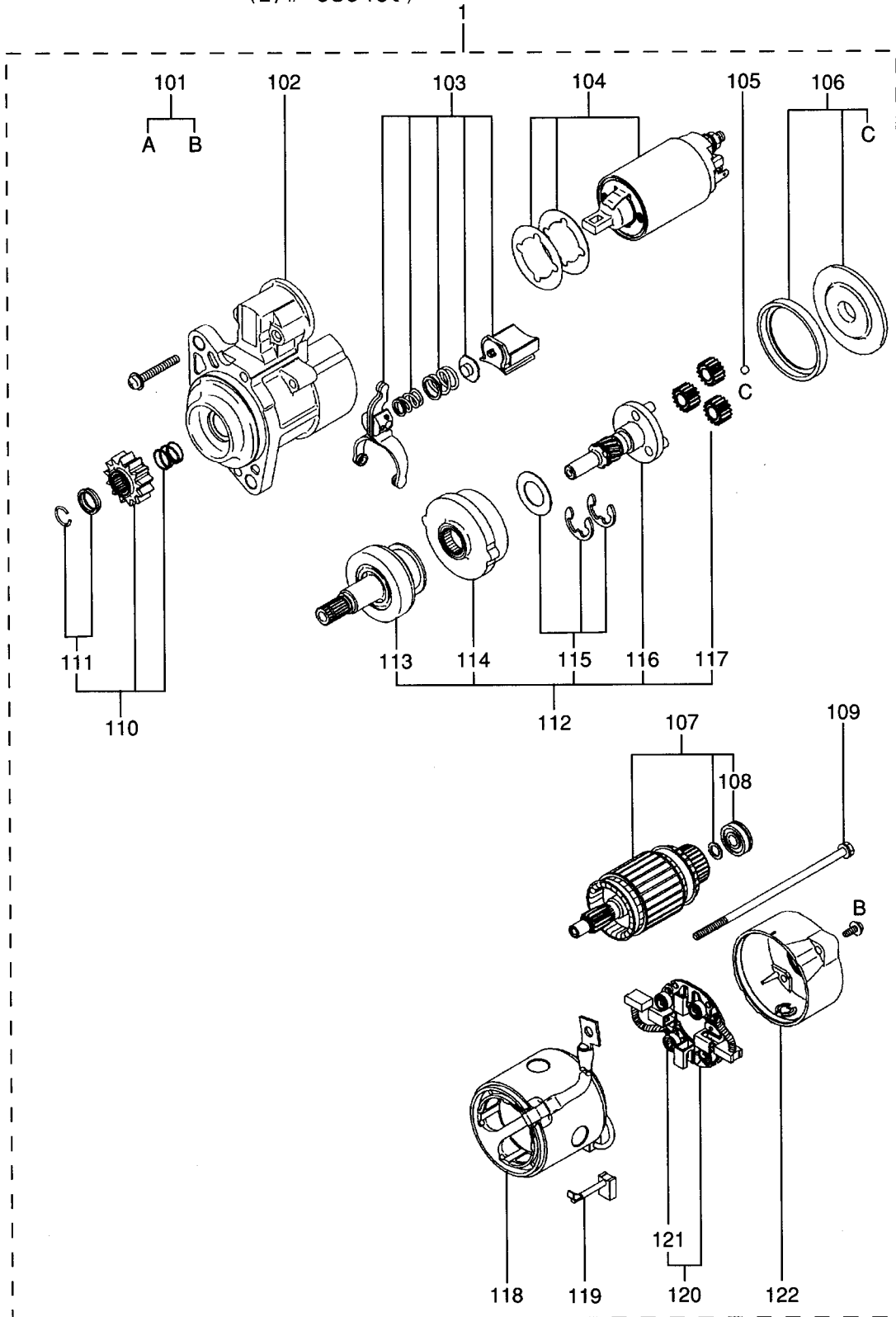
66-01 ELECTRIC PARTS

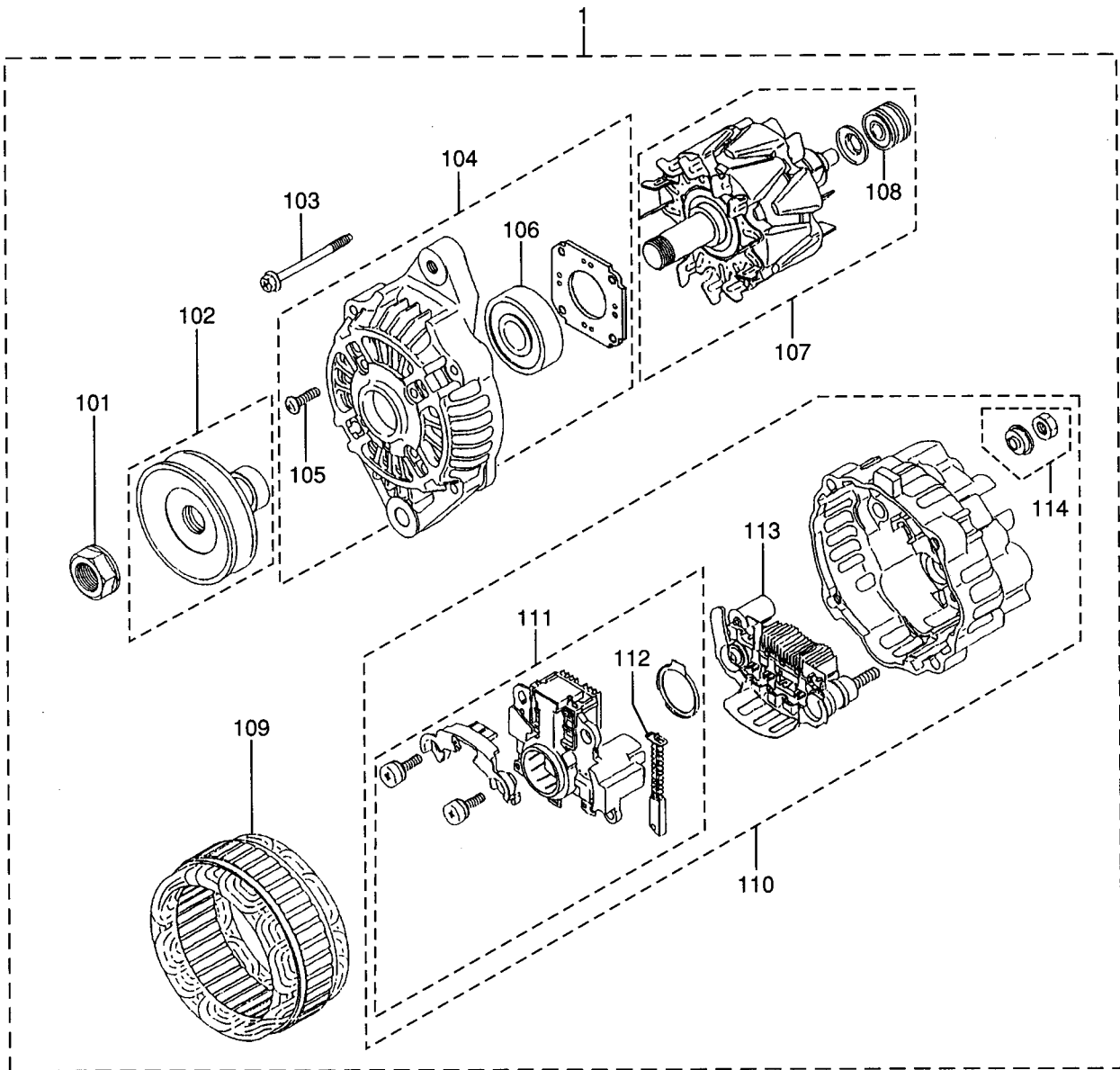


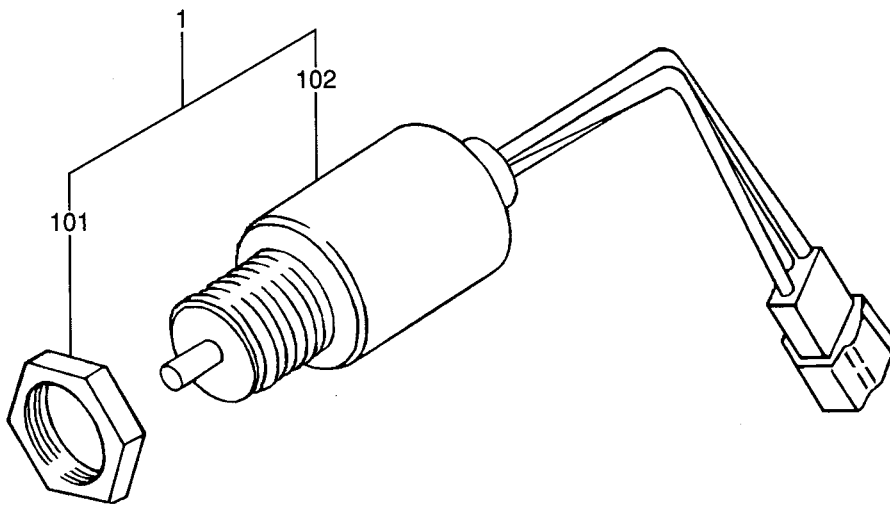
66-02-01 STARTER (12V-2.0KW)
(E/# @58179)

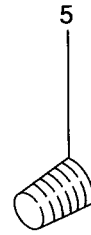
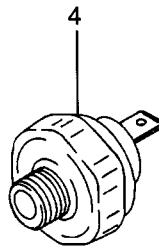
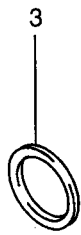
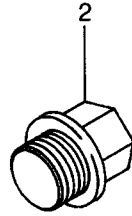
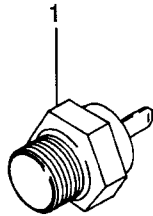


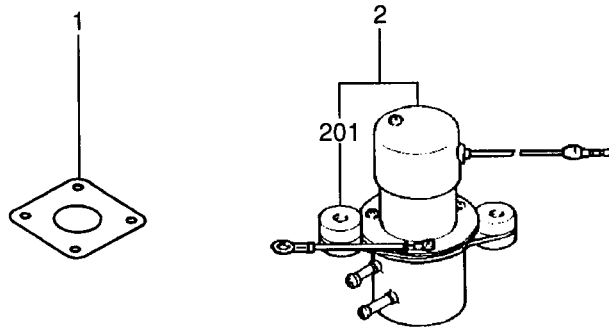
66-02-02 STARTER (12V-2.0KW)
(E/# 58543@)



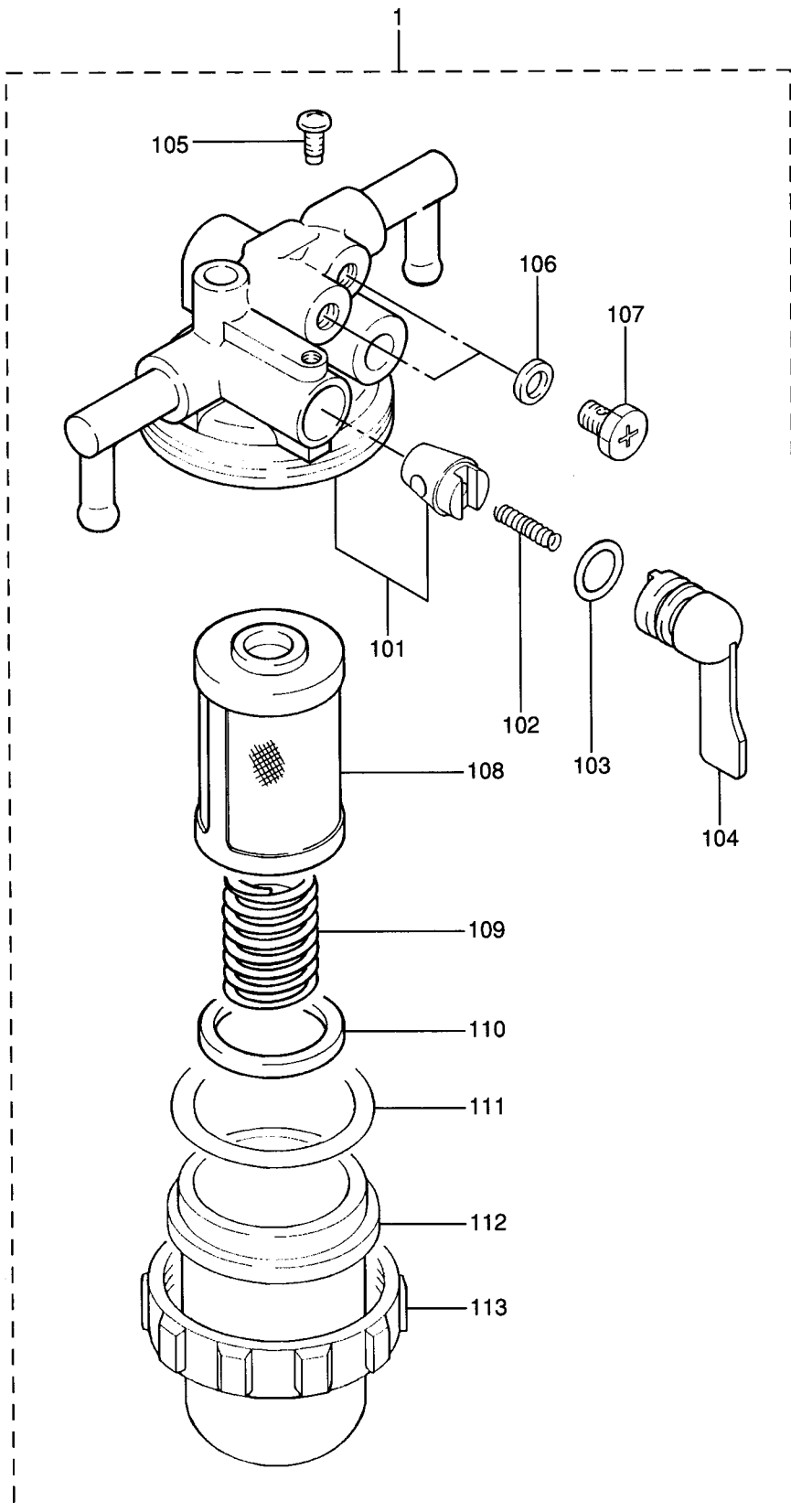


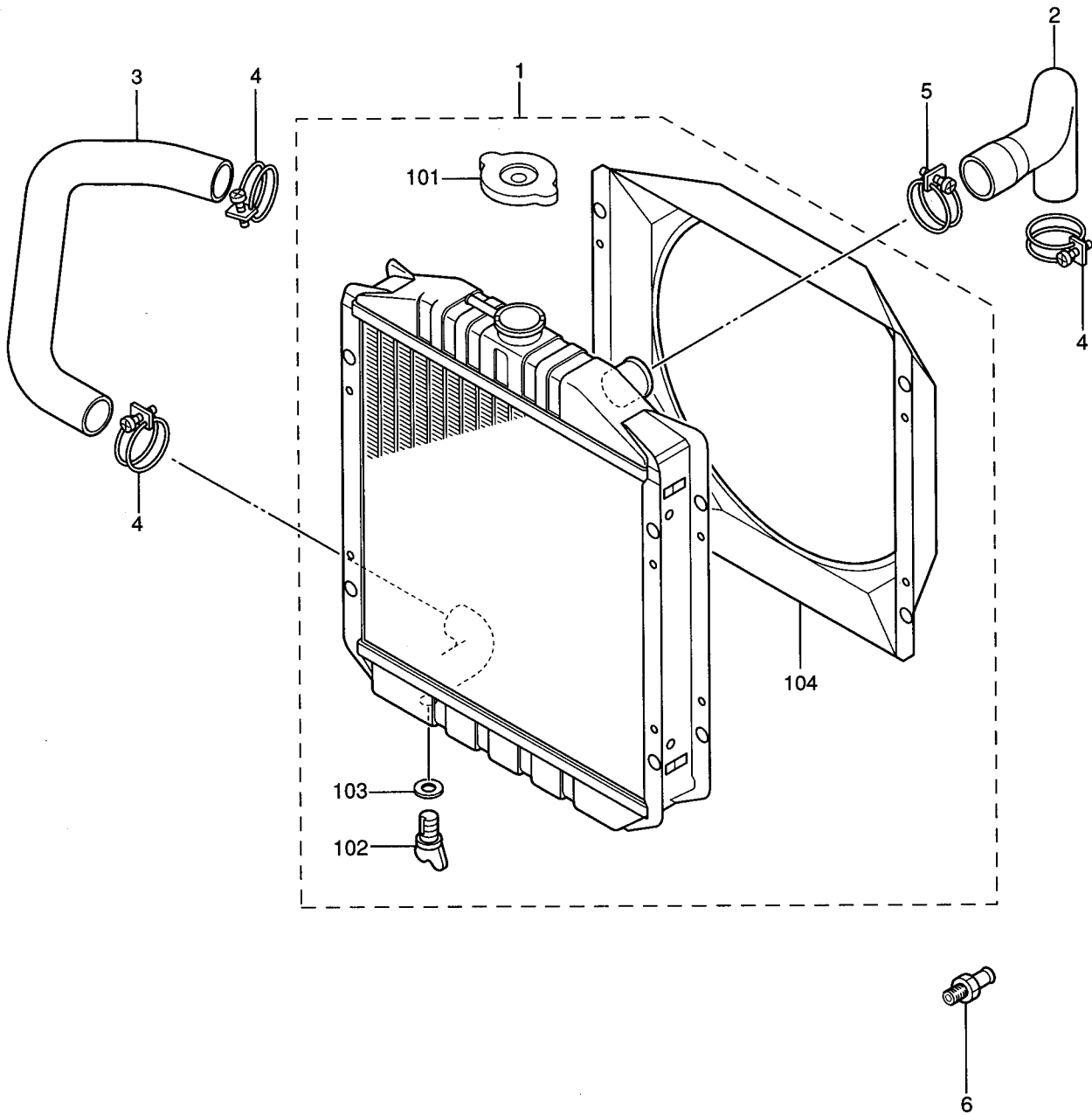


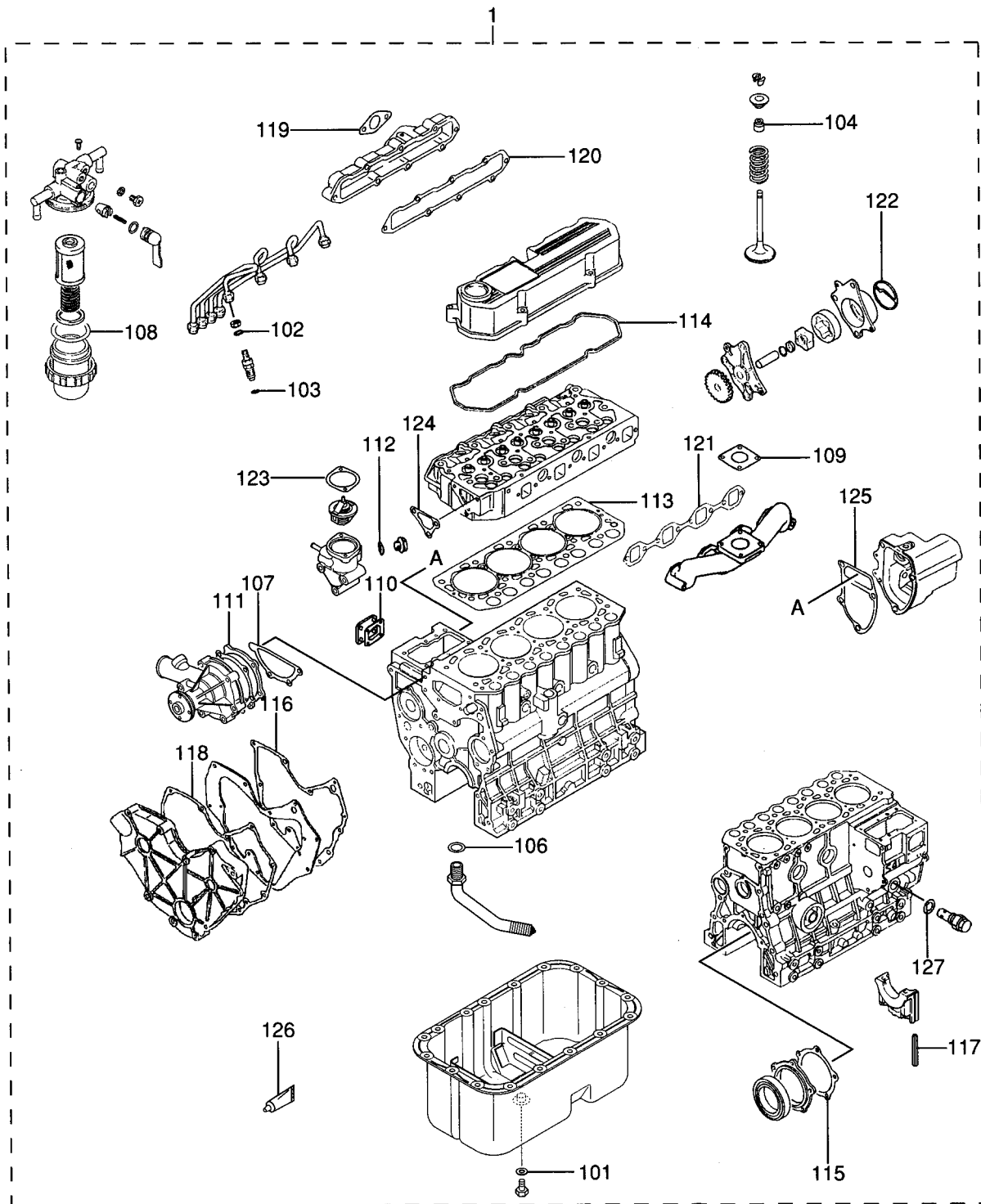




92-02 ACCESSORY (FOR SEDIMENTER)







REF. NO.	PART NO.	R/S P/Q	C/N G	PART NAME & DESCRIPTION	MODEL & QTY			APPLICABLE SERIAL NO.		M/V R/D
					S4L	S4L2		FROM@-	-@UPTO	
1	31A94-02020			GASKET KIT, (O/H)	1	1				
101	MD050317			GASKET, OIL DRAIN	1	1				
102	MD068355			GASKET, FUEL RETURN	4	4				A
103	MD070717			GASKET, HOLDER	4	4				A
104	MD115472			SEAL, VALVE STEM	8	8				A
105	MF520004			O-RING NOT SHOWN	1	1				A
106	MF660036			GASKET	1	1				A
107	MM409326			GASKET, WATER PUMP	1	1				A
108	MM409869			O-RING, FILTER CUP	1	1				A
109	30A30-00200			GASKET	1	1				A
110	30A63-00101			GASKET, TIE-ROD COVER	1	1				
111	30H45-00101			GASKET, WATER PUMP	1	1				
112	30636-25901			GASKET	3	3				A
113	31A01-33300			GASKET, CYLINDER HEAD	1	1				A
114	31A04-33202			GASKET, ROCKER COVER	1	1				
115	31A07-11701			GASKET, OIL SEAL CASE	1	1				
116	31A07-11901			GASKET, FRONT PLATE	1	1				
117	31A07-12200			SEAL, SIDE	4	4				
118	31A11-11200			GASKET, GEAR CASE	1	1				
119	31A30-00801			GASKET, INLET PIPE	1	1				
120	31A30-10902			GASKET, INLET COVER	1	1				
121	31A32-01200			GASKET, EXHAUST MANF	1	1				
122	31A35-02300			PACKING, BODY	1	1				
123	31A46-01200			GASKET, THERMOSTAT	1	1				
124	31A46-10101			GASKET, THERMO CASE	1	1				
125	31A63-12201			GASKET, GOVERNOR CASE	1	1				
126	32A91-05100			GASKET, LIQUID	1	1				
127	34340-00700			GASKET	1	1				A

NUMERICAL PARTS INDEX

PART NO.	GRP NO.	PAGE	REF. NO.	PART NO.	GRP NO.	PAGE	REF. NO.	PART NO.	GRP NO.	PAGE	REF. NO.
A383X-56570	68	47	109	K8712630	63	39	103	MF660036	36	27	2
A414X-19271	68	47	103	MD000245	01-01	3	201		94	59	106
21271	68	47	105		01-02	5	201	MF661022	92-03	57	4
A529X-07871	68	47	114	MD000269	07-02	13	5	MF661024	92-03	57	5
A628T-62170	68	47	102	MD000425	04-01	7	11	MF665511	07-01	11	10
A640X-67070	68	47	104	MD001521	66-01	41	6	MF665532	07-01	11	4
A642X-A9970	68	47	110	MD006704	17	19	801	MF665533	07-01	11	5
A647X-50170	68	47	112		17	19	901	MF665537	07-01	11	18
A860T-40670	68	47	113	MD008762	11	15	7	MF665538	01-01	3	202
A866X-44682	68	47	111	MD008784	04-02	9	4		01-02	5	202
A880X-83770	68	47	107	MD016483	04-01	7	5	MK661-14000	61-01	31	25
A930X-94570	68	47	106	MD021105	17	19	802	MM130552	92-02	55	1
A981X-20771	68	47	101		17	19	902	MM200271	92-03	57	101
F1035-05010	04-01	7	801	MD021204	04-01	7	810	MM200272	92-03	57	102
08020	07-02	13	4	MD024256	07-01	11	17	MM200273	92-03	57	103
30		23	10	MD024812	17	19	2101	MM316248	90	51	2
61-01		31	24	MD041704	45	29	13	MM320881	92-02	55	112
08022	35	25	2	MD050316	13	17	101	MM330940	92-02	55	110
08045	11	15	6	MD050317	13	17	102	MM400380	04-02	9	11
63		39	6		94	59	101	MM400880	61-01	31	15
08055	30	23	11	MD068353	61-01	31	3	MM402737	04-02	9	9
12025	07-01	11	19	MD068355	61-01	31	2	MM404873	92-02	55	102
F1805-06012	61-01	31	17		94	59	102	MM404874	92-02	55	103
06014	63	39	10	MD070717	61-01	31	1	MM404875	92-02	55	105
06025	45	29	12		94	59	103	MM404880	92-02	55	107
06030	45	29	101	MD115472	04-01	7	6	MM404884	92-02	55	106
08016	04-01	7	13		94	59	104	MM408245	07-02	13	12
04-02		9	8	MD703856	04-01	7	10	MM408470	01-01	3	6
11		15	3	MD952231	17	19	22		01-02	5	6
13		17	2	MF140026	66-01	41	7	MM409031	61-01	31	23
61-01		31	16	MF140227	45	29	602	MM409036	61-01	31	19
08020	30	23	6	MF401936	30	23	9	MM409037	61-01	31	20
08035	30	23	5	MF430004	63	39	104	MM409038	61-01	31	21
08040	04-02	9	3	MF430006	66-01	41	3	MM409039	61-01	31	22
08065	45	29	8		66-01	41	8	MM409066	61-01	31	18
10020	01-01	3	7	MF430126	17	19	19	MM409121	61-01	31	14
01-02		5	7	MF430725	63	39	105	MM409150	63	39	8
10025	66-01	41	1	MF430729	36	27	101	MM409304	92-03	57	6
12028	07-02	13	14	MF450006	66-01	41	10	MM409-31301	45	29	603
12050	07-02	13	13	MF450010	17	19	17	MM409326	45	29	107
F1825-06025	61-01	31	10	MF450405	63	39	106		94	59	107
08045	45	29	3	MF450406	66-01	41	4	MM409327	45	29	108
08060	45	29	4		66-01	41	9	MM409427	66-01	41	2
F2325-08000	04-01	7	804	MF450410	17	19	18	MM409645	07-01	11	12
F2846-05000	07-01	11	16	MF472404	07-01	11	11	MM409671	87	49	101
F2850-03020	63	39	101	MF476018	04-01	7	12	MM409868	92-02	55	113
F3150-01010	63	39	102	MF476215	04-02	9	6	MM409869	92-02	55	111
F4300-01400	45	29	901		17	19	16		94	59	108
F8000-08000	07-01	11	1301	MF520004	94	59	105	MM430131	61-01	31	1201
K6516441	45	29	601	MF522010	04-01	7	802	MM430613	07-01	11	3

NUMERICAL PARTS INDEX

PART NO.	GRP NO.	PAGE	REF. NO.	PART NO.	GRP NO.	PAGE	REF. NO.	PART NO.	GRP NO.	PAGE	REF. NO.
MM430614	61-01	31	9	M372X-03271	66-02-01	43	104	09016-10210	61-03-01	35	107
MM430703	61-01	31	8		66-02-02	45	104		61-03-02	37	107
MM431-53801	07-02	13	10	M385X-03771	66-02-01	43	111	30082	61-03-01	35	108
MM431772	92-03	57	104		66-02-02	45	111		61-03-02	37	108
MM432104	90	51	1	M391X-04371	66-02-01	43	121	40170	61-03-01	35	109
MM433306	04-01	7	4		66-02-02	45	121		61-03-02	37	109
MM433322	45	29	109	M414X-04875	66-02-01	43	101	09017-00170	61-03-01	35	110
MM433424	45	29	1		66-02-02	45	101		61-03-02	37	110
MM433673	63	39	108	M578X-29171	66-02-01	43	106	09018-30050	61-03-01	35	114
MM433921	17	19	4		66-02-02	45	106		61-03-02	37	114
MM433922	17	19	5	M605X-75371	66-02-02	45	110	09021-00440	61-03-01	35	111
MM433923	17	19	6	98171	66-02-01	43	110		61-03-02	37	111
MM434146	92-02	55	104	M641X-B1671	66-02-01	43	102	09024-40180	61-03-01	35	118
MM434147	92-02	55	108	D2471	66-02-02	45	102		61-03-02	37	118
MM434148	92-02	55	109	M642X-35771	66-02-01	43	122	09030-10060	61-03-01	35	112
MM434493	45	29	11		66-02-02	45	122		61-03-02	37	112
MM435181	92-03	57	1	M648X-40771	66-02-01	43	119	09046-70030	61-03-01	35	115
MM435190	61-01	31	13		66-02-02	45	119		61-03-02	37	115
MM435279	45	29	10	M649X-20471	66-02-01	43	120	09311-03840	61-02	33	101
MM435746	92-02	55	101		66-02-02	45	120	09312-10380	61-02	33	104
MM435-94101	61-02	33	1	M800X-73873	66-02-01	43	118	70310	61-02	33	103
MM437140	61-01	31	26	73876	66-02-02	45	118	09316-41351	61-02	33	107
MM437305	17	19	10	M863X-08871	66-02-01	43	103	09317-40070	61-02	33	105
MM437313	07-02	13	6		66-02-02	45	103	51810	61-02	33	102
MM437884	07-02	13	7	M901X-00371	66-02-01	43	109	51830	61-02	33	102
MM437885	07-02	13	8		66-02-02	45	109	51850	61-02	33	102
MM437886	07-02	13	9	M931X-01270	66-02-01	43	108	51870	61-02	33	102
MS471104	07-01	11	7		66-02-02	45	108	51890	61-02	33	102
MS471105	07-01	11	8	M982X-38871	66-02-01	43	115	51910	61-02	33	102
MS471110	07-01	11	9		66-02-02	45	115	51930	61-02	33	102
MS602047	61-01	31	1801	S409S-00008	66-02-01	43	105	51950	61-02	33	102
MS604043	61-01	31	1202		66-02-02	45	105	51970	61-02	33	102
MS660163	61-01	31	1802	S930P-63670	68	47	108	51990	61-02	33	102
MS660169	61-01	31	1203	04826-22000	07-01	11	201	09340-05060	61-02	33	106
MS661122	90	51	5	23500	07-01	11	202	09450-37310	61-03-01	35	122
MS661140	01-01	3	3	05534-16000	07-02	13	15	37320	61-03-02	37	122
	01-02	5	3	09006-80020	61-03-01	35	116	30A19-00010	17	19	11
	07-01	11	6		61-03-02	37	116	00020	17	19	12
M106X-43572	66-02-01	43	107	09011-05070	61-03-01	35	101	00030	17	19	13
	66-02-02	45	107		61-03-02	37	101	30A30-00200	92-01	53	1
M135X-01581	66-02-01	43	114	09013-10520	61-03-01	35	102	94		59	109
	66-02-02	45	114		61-03-02	37	102	30A40-00203	36	27	5
M191X-69871	66-02-01	43	113	60540	61-03-01	35	103	30A60-00200	92-01	53	2
94271	66-02-02	45	113		61-03-02	37	103	00500	92-01	53	201
M230X-00471	66-02-01	43	117	70130	61-03-01	35	104	30A63-00101	63	39	9
	66-02-02	45	117		61-03-02	37	104	94		59	110
M357X-66485	66-02-01	43	116	09014-02600	61-03-01	35	105	30A87-10041	87	49	1
	66-02-02	45	116		61-03-02	37	105	20401	87	49	102
91973	66-02-01	43	112	09015-05550	61-03-01	35	106	30H45-00101	45	29	2
91974	66-02-02	45	112		61-03-02	37	106	94		59	111

NUMERICAL PARTS INDEX

PART NO.	GRP NO.	PAGE	REF. NO.	PART NO.	GRP NO.	PAGE	REF. NO.	PART NO.	GRP NO.	PAGE	REF. NO.
30L07-00700	07-01	11	15	31A07-12200	94	59	117	31A61-01500	61-01	31	1205
30L63-00020	63	39	109		5202107-01	11	1	03500	61-01	31	12
00030	63	39	112	31A11-02200	11	15	1	04100	61-01	31	4
00600	63	39	110		1020011	15	4	04200	61-01	31	5
00700	63	39	115		1120011	15	5	04300	61-01	31	6
00800	63	39	12		94	59	118	04400	61-01	31	7
02100	63	39	113	31A13-02030	13	17	1	12600	61-01	31	11
02300	63	39	114	31A17-10602	17	19	7	31A63-00071	63	39	126
02400	63	39	11		1110017	19	1	00400	63	39	117
02600	63	39	116		1120017	19	2	00500	63	39	118
30405-31403	04-02	9	7		1130017	19	3	01800	63	39	119
30636-25901	90	51	3	31A19-01023	17	19	9	02300	63	39	7
94		59	112		1002417	19	8	02400	63	39	120
31A01-02500	01-01	3	205	31A20-00102	17	19	14	02600	63	39	121
	01-02	5	205		0020017	19	15	02700	63	39	122
02600	01-01	3	206		0240017	19	20	03020	63	39	1
	01-02	5	206	31A21-01040	17	19	21	05601	63	39	111
11100	01-01	3	4	31A23-00051	07-01	11	13	06200	63	39	123
	01-02	5	4		0070023	21	301	07900	63	39	124
21060	01-01	3	1		0302123	21	3	10090	63	39	128
33300	01-01	3	5		0320023	21	302	10305	63	39	3
	01-02	5	5		0330017	19	23	11061	63	39	5
94		59	113		0340023	21	1	11301	63	39	125
51040	01-02	5	1		0360023	21	2	12201	63	39	2
31A03-01101	01-01	3	208	31A30-00300	30	23	3	94		59	125
01500	01-02	5	208		0080130	23	4	20201	63	39	4
31A04-00700	04-01	7	7		94	59	119	22100	63	39	127
01301	04-01	7	3		1090230	23	2	31A65-03070	61-03-01	35	1
11024	04-01	7	803		94	59	120	03080	61-03-02	37	1
20031	04-02	9	1		2001030	23	1	11200	04-01	7	9
20200	04-01	7	2	31A32-00402	30	23	7	31A66-00101	66-02-01	43	1
21010	04-01	7	809		0120030	23	8	00102	66-02-02	45	1
30043	04-01	7	8		94	59	121	04101	66-01	41	13
30100	04-01	7	1	31A35-02300	35	25	101	31A68-00402	68	47	1
33202	04-02	9	2		94	59	122	02100	66-01	41	5
94		59	114		0502036	27	1	20300	66-01	41	11
34100	04-01	7	812		3001035	25	1	31A90-00300	90	51	4
34300	04-01	7	813	31A42-00200	36	27	6	31A94-02020	94	59	1
31A05-00201	04-02	9	5	31A45-20700	45	29	5	32A04-02401	04-01	7	808
01300	04-02	9	10	31A46-00071	45	29	604	32A36-05012	36	27	3
31A07-00801	07-01	11	203		0101045	29	9	32A46-03100	45	29	903
02300	07-02	13	3		0104045	29	6	32A66-03100	66-01	41	12
03100	07-01	11	204		0110045	29	902	32A91-05100	91	59	126
04401	07-02	13	11		0120045	29	607	32C04-04500	04-01	7	814
11601	07-02	13	1		94	59	123	06100	04-01	7	815
11701	07-02	13	2		1010145	29	7	34340-00700	36	27	4
94		59	115		94	59	124	94		59	127
11901	11	15	2	31A47-00101	92-03	57	2	34442-05200	11	15	8
94		59	116		0020192-03	57	3	90802-20150	61-03-01	35	113
12200	07-01	11	14	31A61-01200	61-01	31	1204		61-03-02	37	113

NUMERICAL PARTS INDEX

PART NO.	GRP NO.	PAGE	REF. NO.	PART NO.	GRP NO.	PAGE	REF. NO.	PART NO.	GRP NO.	PAGE	REF. NO.
94901-81020	61-03-01	35	120								
	61-03-02	37	120								
94903-00030	61-03-01	35	123								
	61-03-02	37	123								
94904-80800	61-03-01	35	117								
	61-03-02	37	117								
94918-00310	61-03-01	35	119								
	61-03-02	37	119								

TABLE OF BOLT,W/WASHER

BOLT,W/WASHER	BOLT/WASHER	BOLT,W/WASHER	BOLT/WASHER	BOLT,W/WASHER	BOLT/WASHER
F1805-06010	F1035-06010 F2515-06000	F1805-06035	F1035-06035 F2515-06000	F1805-08018	F1035-08018 F2515-08000
F1805-06012	F1035-06012 F2515-06000	F1805-06040	F1035-06040 F2515-06000	F1805-08020	F1035-08020 F2515-08000
F1805-06014	F1035-06014 F2515-06000	F1805-06045	F1035-06045 F2515-06000	F1805-08022	F1035-08022 F2515-08000
F1805-06016	F1035-06016 F2515-06000	F1805-06055	F1035-06055 F2515-06000	F1805-08025	F1035-08025 F2515-08000
F1805-06018	F1035-06018 F2515-06000	F1805-06060	F1035-06060 F2515-06000	F1805-08030	F1035-08030 F2515-08000
F1805-06020	F1035-06020 F2515-06000	F1805-08012	F1035-08012 F2515-08000	F1805-08035	F1035-08035 F2515-08000
F1805-06025	F1035-06025 F2515-06000	F1805-08014	F1035-08014 F2515-08000	F1805-08040	F1035-08040 F2515-08000
F1805-06030	F1035-06030 F2515-06000	F1805-08016	F1035-08016 F2515-08000	F1805-08045	F1035-08045 F2515-08000

TABLE OF BOLT,W/WASHER

BOLT,W/WASHER	BOLT/WASHER	BOLT,W/WASHER	BOLT/WASHER	BOLT,W/WASHER	BOLT/WASHER
F1805-08050	F1035-08050 F2515-08000	F1805-10018	F1035-10018 F2515-10000	F1805-10050	F1035-10050 F2515-10000
F1805-08055	F1035-08055 F2515-08000	F1805-10020	F1035-10020 F2515-10000	F1805-10055	F1035-10055 F2515-10000
F1805-08060	F1035-08060 F2515-08000	F1805-10022	F1035-10022 F2515-10000	F1805-10060	F1035-10060 F2515-10000
F1805-08065	F1035-08065 F2515-08000	F1805-10025	F1035-10025 F2515-10000	F1805-10065	F1035-10065 F2515-10000
F1805-08070	F1035-08070 F2515-08000	F1805-10030	F1035-10030 F2515-10000	F1805-10070	F1035-10070 F2515-10000
F1805-08075	F1035-08075 F2515-08000	F1805-10035	F1035-10035 F2515-10000	F1805-10085	F1035-10085 F2515-10000
F1805-10014	F1035-10014 F2515-10000	F1805-10040	F1035-10040 F2515-10000	F1805-12016	F1035-12016 F2515-12000
F1805-10016	F1035-10016 F2515-10000	F1805-10045	F1035-10045 F2515-10000	F1805-12020	F1035-12020 F2515-12000

TABLE OF BOLT,W/WASHER

BOLT,W/WASHER	BOLT/WASHER	BOLT,W/WASHER	BOLT/WASHER	BOLT,W/WASHER	BOLT/WASHER
F1805-12025	F1035-12025 F2515-12000	F1805-12065	F1035-12065 F2515-12000	F1825-06010	F1035-06010 F2515-06000 F2500-06000
F1805-12030	F1035-12030 F2515-12000	F1805-12085	F1035-12085 F2515-12000	F1825-06012	F1035-06012 F2515-06000 F2500-06000
F1805-12035	F1035-12035 F2515-12000	F1805-14035	F1035-14035 F2515-14000	F1825-06014	F1035-06014 F2515-06000 F2500-06000
F1805-12040	F1035-12040 F2515-12000	F1805-14045	F1035-14045 F2515-14000	F1825-06016	F1035-06016 F2515-06000 F2500-06000
F1805-12045	F1035-12045 F2515-12000			F1825-06020	F1035-06020 F2515-06000 F2500-06000
F1805-12050	F1035-12050 F2515-12000			F1825-06025	F1035-06025 F2515-06000 F2500-06000
F1805-12055	F1035-12055 F2515-12000				
F1805-12060	F1035-12060 F2515-12000				

TABLE OF BOLT,W/WASHER

BOLT,W/WASHER	BOLT/WASHER	BOLT,W/WASHER	BOLT/WASHER	BOLT,W/WASHER	BOLT/WASHER
F1825-06030	F1035-06030 F2515-06000 F2500-06000	F1825-08025	F1035-08025 F2515-08000 F2500-08000	F1825-08050	F1035-08050 F2515-08000 F2500-08000
F1825-06035	F1035-06035 F2515-06000 F2500-06000	F1825-08030	F1035-08030 F2515-08000 F2500-08000	F1825-08055	F1035-08055 F2515-08000 F2500-08000
F1825-06055	F1035-06055 F2515-06000 F2500-06000	F1825-08035	F1035-08035 F2515-08000 F2500-08000	F1825-08085	F1035-08085 F2515-08000 F2500-08000
F1825-08012	F1035-08012 F2515-08000 F2500-08000	F1825-08038	F1035-08038 F2515-08000 F2500-08000	F1825-10014	F1035-10014 F2515-10000 F2500-10000
F1825-08016	F1035-08016 F2515-08000 F2500-08000	F1825-08040	F1035-08040 F2515-08000 F2500-08000	F1825-10016	F1035-10016 F2515-10000 F2500-10000
F1825-08020	F1035-08020 F2515-08000 F2500-08000	F1825-08045	F1035-08045 F2515-08000 F2500-08000	F1825-10020	F1035-10020 F2515-10000 F2500-10000

TABLE OF BOLT,W/WASHER

BOLT,W/WASHER	BOLT/WASHER	BOLT,W/WASHER	BOLT/WASHER	BOLT,W/WASHER	BOLT/WASHER
F1825-10025	F1035-10025 F2515-10000 F2500-10000	F1825-12025	F1035-12025 F2515-12000 F2500-12000	F2005-10016	F1155-10016 F2515-10000
F1825-10030	F1035-10030 F2515-10000 F2500-10000	F1825-12030	F1035-12030 F2515-12000 F2500-12000	F2005-10020	F1155-10020 F2515-10000
F1825-10035	F1035-10035 F2515-10000 F2500-10000	F1825-12040	F1035-12040 F2515-12000 F2500-12000	F2005-10025	F1155-10025 F2515-10000
F1825-10040	F1035-10040 F2515-10000 F2500-10000			F2005-10030	F1155-10030 F2515-10000
F1825-10080	F1035-10080 F2515-10000 F2500-10000			F2005-10035	F1155-10035 F2515-10000
F1825-12020	F1035-12020 F2515-12000 F2500-12000			F2005-10040	F1155-10040 F2515-10000
				F2005-10045	F1155-10045 F2515-10000
				F2005-10050	F1155-10050 F2515-10000

TABLE OF BOLT,W/WASHER

BOLT,W/WASHER	BOLT/WASHER	BOLT,W/WASHER	BOLT/WASHER	BOLT,W/WASHER	BOLT/WASHER
F2005-10055	F1155-10055 F2515-10000	F2005-12040	F1155-12040 F2515-12000	F2015-10020	F1155-10020 F2515-10000 F2500-10000
F2005-10060	F1155-10060 F2515-10000	F2005-12045	F1155-12045 F2515-12000	F2015-10025	F1155-10025 F2515-10000 F2500-10000
F2005-10065	F1155-10065 F2515-10000	F2005-12050	F1155-12050 F2515-12000	F2015-10030	F1155-10030 F2515-10000 F2500-10000
F2005-10070	F1155-10070 F2515-10000	F2005-12055	F1155-12055 F2515-12000	F2015-10035	F1155-10035 F2515-10000 F2500-10000
F2005-12020	F1155-12020 F2515-12000	F2005-12065	F1155-12065 F2515-12000	F2015-10040	F1155-10040 F2515-10000 F2500-10000
F2005-12025	F1155-12025 F2515-12000			F2015-10050	F1155-10050 F2515-10000 F2500-10000
F2005-12030	F1155-12030 F2515-12000				
F2005-12035	F1155-12035 F2515-12000				

TABLE OF BOLT,W/WASHER

BOLT,W/WASHER	BOLT/WASHER	BOLT,W/WASHER	BOLT/WASHER	BOLT,W/WASHER	BOLT/WASHER
F2015-10055	F1155-10055 F2515-10000 F2500-10000				
F2015-10060	F1155-10060 F2515-10000 F2500-10000				
F2015-12025	F1155-12025 F2515-12000 F2500-12000				
F2015-12030	F1155-12030 F2515-12000 F2500-12000				