

MITSUBISHI GENUINE PARTS

"MITSUBISHI GENUINE PARTS" should be used exclusively for servicing your Mitsubishi engine.

"MITSUBISHI GENUINE PARTS" are superior and reliable because they have been produced under the excellent quality-control system, and have passed the strict inspections.

Imitation parts are not reliable from the viewpoints of their material and manufacturing method which are entirely incomparable with those of genuine parts.

A large assortment of "MITSUBISHI GENUINE PARTS" is always available at any of our authorized dealers, so do your ordering at your nearest dealer by specifying "MITSUBISHI GENUINE PARTS".

GUIDE FOR USE OF PARTS CATALOGUE

1. This Parts Catalogue contains service parts for the following Mitsubishi S3L,S3L2 diesel engine. The applicable engine type and serial number are as below:

ENGINE NAME	MODEL	USE · SPECIFICATION	APPLICABLE SERIAL NO.
S3L	62AG2	For Generator	62310 -UP
	62APH2	For Power unit	62320 -UP
S3L2	62AG2	For Generator	62287 -UP
	62APH	For Power unit	62294 -UP
	62APH2	For Power unit	62293 -UP

2. When ordering parts, give the Mitsubishi dealer or distributor the following information:
- (1) Part number (or assembly number) and part name.
 - (2) Quantity required
 - (3) Model and serial number

NOTE: In some cases a substitute part is furnished instead of the part ordered.

3. Indication of assembled bolts with washer

Of the standard bolts, those with washers are identified by the symbol "B/W" in the Description column of each list. (Part Name: BOLT, W/WASHER)

For the part numbers of the bolts and washers and those of bolts with washers, refer to the listing (beginning with the page D1) at the end of this parts catalogue. These bolts and washers should be ordered individually.

4. Indication of combination for replaceability — "G"—

The new part to be used in combination with the other part in place of an old part is identified by the symbol "G" in the interchangeability code column of each list.

For the parts to be combined, refer to the listing (beginning with E1) at the end of this parts catalogue.

5. For the numerical index, refer to the page beginning with C1 at the end of this parts catalogue.

6. Some illustration may have some difference from the real part shape when the illustration shows a representation of various parts.

7. The parts and part numbers are subject to change without prior notice.

SAMPLE OF PARTS CATALOGUE

GROUP NAME
GROUP NUMBER → **01-01 CRANKCASE**

Applicable to serial NO. shown on cover and up if blank.

Model type

REF. NO.	PART NO.	R/P	S/C	E/N	G	PARTNAME&DESCRIPTION	MODEL&QTY		APPLICABLE SERIAL NO.		M/R	V/R	D
							31NCA		FORM@-	-@UPTO			
1	MM409741					C RETAINER	1						
2	MM434729	R			1	RETAINER	1		11001-				
2	MM430181					BLOCK SUB ASSY	1						
2 0 1	MF665538					CAP,SEARING	2						
2 0 2	MF665543					CAP,SEARING	2						
2 0 3	MM436217					BOLT,BEARING CAP	8						
2 0 4	*					CAP ASSY	1						
2 0 9	MM48176					BUSHING	1						V
3	MD000268					C PIN,DOWEL	2						
	MM409645				1	PIN,DOWEL	2		12051@	@12050			A
4	MF240051					BOLT,W/WASHER B/W	3						

Part not to be supplied See (3)

See (8) - a Description codes.

See (6) Change codes.

See (5) Sequence-of-change numbers.

See (2) Reference number.

See (4) Interchangerability code.

Quantity per unit

Applicable from serial No. indicated.

Applicable from 12051 (Scheduled) if suffixed with @ and sometimes differs from real serial No.

Applicable up to serial No. indicated.

High-demand part. See (11)

Part newly changed or added. See (12)

Applicable up to 12051 (Scheduled) if prefixed with @ and sometimes differs from real serial No.

NOTE : Some of model designations, number of variations and serial numbers, indicated above, are quoted from other parts catalogues. Read these items of information as those for this parts catalogue.

NOTE : For the description of each item, refer to the pages which follow.

HOW TO USE THIS PARTS CATALOGUE

(to be referred to together with the former SAMPLE OF PARTS CATALOGUE)

(1)
01-01 CYLINDER HEAD
 (FOR 1, 2)

1. S3L-62AG2
2. S3L-62APH2
3. S3L2-62AG2
4. S3L2-62APH
5. S3L2-62APH2

- 3 -

REF. NO.	PART NO.	RSC /EN PQG	PART NAME & DESCRIPTION	MODEL&QTY					APPLICABLE SERIAL NO. FROM@--@UPTORD	MV /R
				1	2	3	4	5		
1	31B01-31020		HEAD ASSY,CYLINDER	1		
2	*		HEAD SUB ASSY,CYL	1		
201	MD000245		CAP,SEALING	1		
202	MF665538		CAP,SEALING	5		
203	*		SEAT, INLET VALVE	3		

The items (1) thru (12) are as described below :

(1) Compiling system

The systems of a unit are grouped according to their location in the unit. The groups, each identified by group number, are listed in the order by CONTENTS. Each group is preceded by an "exploded view" which clearly illustrates each part in its correct relation to the other parts in the illustration.

(2) Reference number

Abbreviated to "REF.No.," this number is used to locate a part in the illustration. In cases where the reference number is of three to four figures, the first and second figures show the reference number of an assembly, and the last two figures show the numbers of its component parts.

(3) Part numbers

The part numbers shown in this parts catalogue are those assigned to genuine Mitsubishi parts.

NOTE : Parts with asterisk (*) are not supplied individually.

(4) Interchangeability codes

The interchangeability codes used in this parts catalogue are as follows :

PART NO.	Code (R/P)	DESCRIPTION
A (Old) B (New)	R	B (new part) and A (old part) are mutually interchangeable
A (Old) B (New)	1	A (old part) is not supplied. B (new part) can be substituted for A (old part) .
A (Old) B (New)	3	B (new part) can be substituted for A (old part) . [A (old part) cannot be substituted for B (new part) .]
A (Old) B (New)	N	B (new part) and A (old part) are not interchangeable.
A (Old) B (New)	G	B (new part) can be substituted for A (old part) in combination with other part (s) . (For the parts to be combined, refer to the listing beginning with the page E1 at the end of this parts catalogue.)

(5) Sequence of change numbers

The parts are changed for improved quality or performance. Their changes are indicated in sequence by numerals (1. 2. 3 ...) .

Blank : Original

1 : 1st change

2 : 2nd change

3 : 3rd change

(6) Change codes

These codes indicate the reason or purpose of changes of the parts.

A : Added part (a part entered into service)

C : Change of part number

D : Deleted part (a part applicable upto the serial no. expressed in Serial No. column)

E : Added part except above reasons

Q : Change of quantity

(9) Model & quantity

- (a) **Model** : Model, type, specification, destination, etc. of product to which a parts catalogue applies are indicated in the title column of each variation.
- (b) **Quantity** : Quantity of part or assembly and its component parts required for one unit of product is indicated.

NOTE : In case "AR" appears in QTY column, it is required to adjust quantity for use.

(10) Applicable serial numbers

Applicable serial numbers of engine are indicated in the "UPTO" or "FROM" column. Serial numbers with "@" are scheduled ones and sometimes differ from the real serial numbers. If the "FROM" column is blank, the part is applicable to serial number shown on this cover and up.

(11) Management rank

Parts ranked as "A" are high-demand parts. This ranking is to be referred to by dealers, and is devised to facilitate and rationalize their distribution, stocking and inventory of the parts.

(12) Parts changed or added after the last parts list that has been published are identified by "V."

TABLE OF SYMBOLS & ABBREVIATIONS

SYMBOL	DESCRIPTION
ACCEL	ACCELERATOR
ADJ	ADJUSTING (ADJUSTABLE)
AIR-CON	AIR-CONDITIONER
ASSY	ASSEMBLY
ATT	ATTACHMENT
AUTO	AUTOMATIC
AUX	AUXILIARY
AR	AS REQUIRED
B/H	BACKHOE
BATT	BATTERY
BRG	BEARING
B/PMP	BILGE PUMP
BRKT	BRACKET
BUSH	BUSHING
CARB	CARBURETOR
C/L	CENTERLINE
COMPR	COMPRESSOR
CON-ROD	CONNECTING-ROD
C/MBR	CROSS-MEMBER
CYL	CYLINDER
DIA	DIAMETER
DIFF	DIFFERENTIAL
DISTR	DISTRIBUTOR
DR	DRIVE
D=	OUT DIAMETER

SYMBOL	DESCRIPTION
ELEC	ELECTRIC
ENG	ENGINE
EQUIP	EQUIPMENT
EXH	EXHAUST
E/TNK	EXPANSION TANK
FITT	FITTING
FLEX	FLEXIBLE
FR	FRONT
GSKT	GASKET
GEN	GENERATOR
GOV	GOVERNOR
G/N	GROUP NUMBER
H/EXCH	HEAT EXCHANGER
HEX	HEXAGON
HYD	HYDRAULIC
H=	HEIGHT
IND	INDUSTRIAL
INJ	INJECTION
INSTAL	INSTALLATION
INST	INSTRUMENT
INTLK	INTERLOCK
JUNC	JUNCTION
KD	KNOCKDOWN
L.H	LEFT HAND
LUB	LUBRICATION
L=	LENGTH

SYMBOL	DESCRIPTION
MANF	MANIFOLD
MAX	MAXIMUM
M.L.H	MAXIMUM LIFTING HEIGHT
MIN	MINIMUM
MTR	MOTOR
MTG	MOUNTING
NO.	NUMBER
OPT	OPTION
O/D	OVER DRIVE
O.S	OVERSIZE
PTO	POWER TAKE-OFF
P/S	POWER STEERING
PRESS	PRESSURE
P/N	PART NUMBER
QTY	QUANTITY
RAD	RADIATOR
RE	REAR
REG	REGULATOR
REV	REVERSE
R.H	RIGHT HAND
REF.NO.	REFERENCE NUMBER
R/N	REFERENCE NUMBER
S/PMP	SEA WATER PUMP
SECT	SECTION
S/MBR	SIDEMEMBER

TABLE OF SYMBOLS & ABBREVIATIONS

SYMBOL	DESCRIPTION	SYMBOL	DESCRIPTION	SYMBOL	DESCRIPTION
STD	STANDARD	1ST	FIRST		
SUPT	SUPPORT	2ND	SECOND		
SYM	SYMBOL	3RD	THIRD		
SYNCH	SYNCHRONIZER	4TH	FOURTH		
SYS	SYSTEM	5TH	FIFTH		
TEMP	TEMPERATURE	&	AND		
TERM	TERMINAL	@	UNCONFIRMED		
T/CONV	TORQUE-CONVERTER	*	PART NOT TO BE SUPPLIED		
T/F	TRANSFER				
T/M	TRANSMISSION				
T/HSG	TURBINE-HOUSING				
T/C	TURBOCHARGER				
T=	THICKNESS				
U/BODY	UNDERBODY				
U.S	UNDERSIZE				
UNIV	UNIVERSAL				
VAC	VACUUM				
VENT	VENTILATOR				
W/STRIP	WEATHERSTRIP				
W/	WITH				
W/O	WITHOUT				
W/W	WOODWARD				
W/PMP	WATER PUMP				
W=	WIDTH				
Z=	NUMBER OF GEAR TEETH				

TABLE OF MAKER'S NAME

BAS or ZXL	Bosch Automotive System Corp. (OLD:Zexel Corp.)	NKC	Nikko Electric Industry Co.,Ltd.
DEN or NDC	DENSO Corp. (OLD:Nippon denso Co.,Ltd.)	MEC	Mitsubishi Electric Corp.
NCC	Niigata Converter Co., Ltd.	SEC	Sawafuji Electric Co.,Ltd.
		MPC	Mikuni Precision Co.,Ltd.

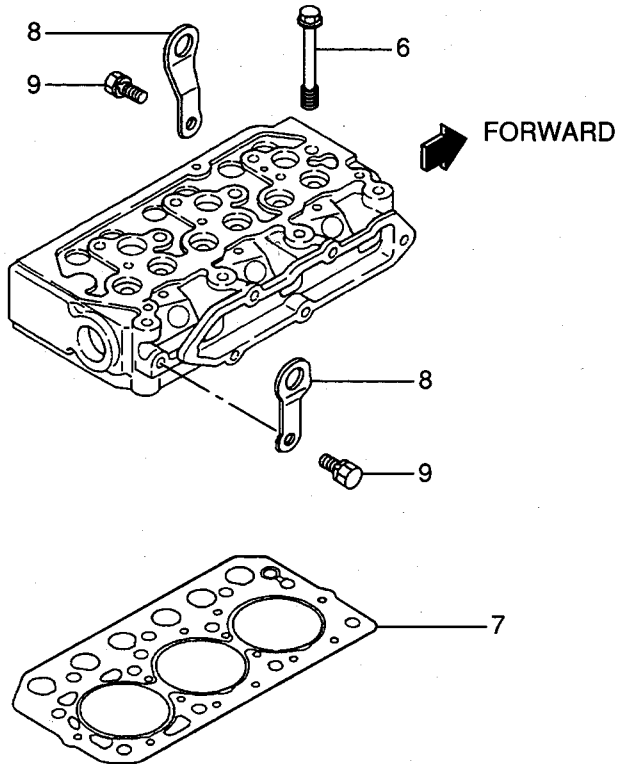
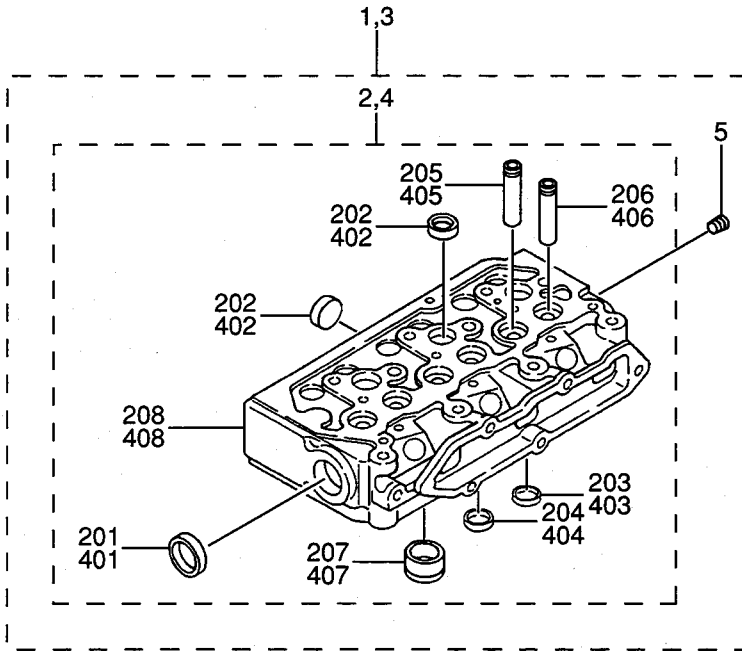
C O N T E N T S

GROUP NO.	GROUP NAME	PAGE
ENGINE BODY		
01-01	CYLINDER HEAD (FOR 1,2).....	2
01-02	CYLINDER HEAD (FOR 3,4,5).....	4
04-01	VALVE MECHANISM.....	6
04-02	ROCKER COVER & CAMSHAFT.....	8
07-01	CRANKCASE ASSY.....	10
07-02	CRANKCASE.....	12
11-01	TIMING GEAR CASE (FOR 2,5).....	14
11-02	TIMING GEAR CASE (FOR 1,3,4).....	16
13	OIL PAN.....	18
17	MAIN MOVING PARTS.....	20
23	TIMING GEAR.....	22
INLET & EXHAUST SYSTEM		
30	INLET & EXHAUST MANIFOLD.....	24
OIL PUMP		
35	OIL PUMP.....	26
36	OIL SYSTEM.....	28
COOLING SYSTEM		
45	COOLING SYSTEM.....	30

GROUP NO.	GROUP NAME	PAGE
FUEL SYSTEM		
61-01	FUEL SYSTEM.....	32
61-02	NOZZLE & NOZZLE HOLDER.....	34
61-03-01	INJECTION PUMP (FOR 1,3).....	36
61-03-02	INJECTION PUMP (FOR 2).....	38
61-03-03	INJECTION PUMP (FOR 4,5).....	40
GOVERNOR SYSTEM		
63-01	GOVERNOR (FOR 1,3).....	42
63-02	GOVERNOR (FOR 2,4,5).....	46
ELECTRIC PARTS		
66-01	ELECTRIC PARTS.....	48
66-02	STARTER (12V-1.7KW).....	50
68	ALTERNATOR (12V-50A).....	52
CONTROL SYSTEM		
87	CONTROL SYSTEM.....	54
INSTRUMENT PARTS		
90	INSTRUMENT.....	56
ACCESSORY		
92	ACCESSORY.....	58
REPAIR PARTS		

GROUP NO.	GROUP NAME	PAGE
94-01	OVERHAUL GASKET KIT (FOR 1,3).....	60
94-02	OVERHAUL GASKET KIT (FOR 2,5).....	62
94-03	OVERHAUL GASKET KIT (FOR 4).....	64
	NUMERICAL PARTS INDEX.....	C1
	TABLE OF BOLT,W/WASHER.....	D1

01-01 CYLINDER HEAD
(FOR 1, 2)



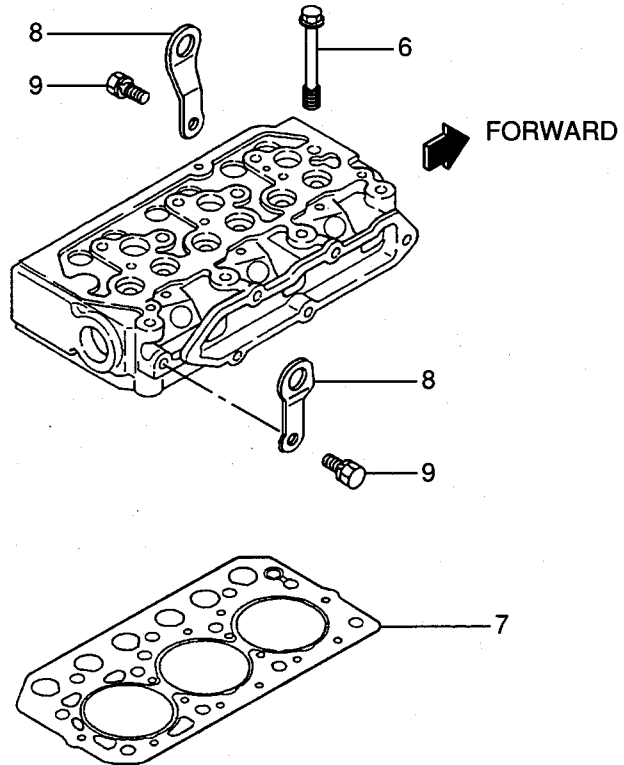
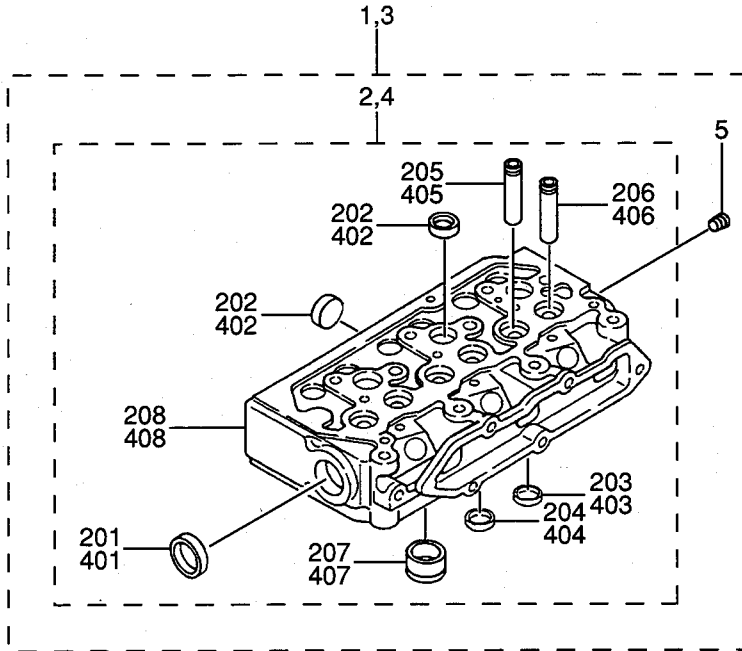
01-01

CYLINDER HEAD
(FOR 1, 2)

- 1. S3L-62AG2
- 2. S3L-62APH2
- 3. S3L2-62AG2
- 4. S3L2-62APH
- 5. S3L2-62APH2

REF. NO.	PART NO.	RSC /EN PQG	PART NAME & DESCRIPTION	MODEL&QTY					APPLICABLE SERIAL NO.	M/V /R ORD
				1	2	3	4	5		
1	31B01-31020		HEAD ASSY,CYLINDER	1		
2	*		HEAD SUB ASSY,CYL	1		
201	MD000245		CAP,SEALING	1		
202	MF665538		CAP,SEALING	5		
203	*		SEAT,INLET VALVE	3		
204	*		SEAT,EXHAUST VALVE	3		
205	31A01-02500		GUIDE,EXHAUST VALVE	3		
206	31A01-02600		GUIDE,INLET VALVE	3		
207	31A03-01101		JET,COMBUSTION	3		
208	*		CYLINDER HEAD	1		
3	31B01-11070		HEAD ASSY,CYLINDER	.	1	.	.	.		
4	*		HEAD SUB ASSY,CYL	.	1	.	.	.		
401	MD000245		CAP,SEALING	.	1	.	.	.		
402	MF665538		CAP,SEALING	.	5	.	.	.		
403	*		SEAT,INLET VALVE	.	3	.	.	.		
404	*		SEAT,EXHAUST VALVE	.	3	.	.	.		
405	31A01-02500		GUIDE,EXHAUST VALVE	.	3	.	.	.		
406	31A01-02600		GUIDE,INLET VALVE	.	3	.	.	.		
407	31A03-01400		JET,COMBUSTION	.	3	.	.	.		
408	*		CYLINDER HEAD	.	1	.	.	.		
5	MS661140		PLUG,TAPER	1	1	.	.	.		A
6	31A01-11100		BOLT,CYLINDER HEAD	11	11	.	.	.		A
7	31B01-23200		GASKET,CYLINDER HEAD	1	1	.	.	.		A
8	MM408470		HANGER,ENGINE	2	2	.	.	.		A
9	F1805-10020		BOLT,W/WASHER B/W	2	2	.	.	.		A

01-02 CYLINDER HEAD
(FOR 3, 4, 5)

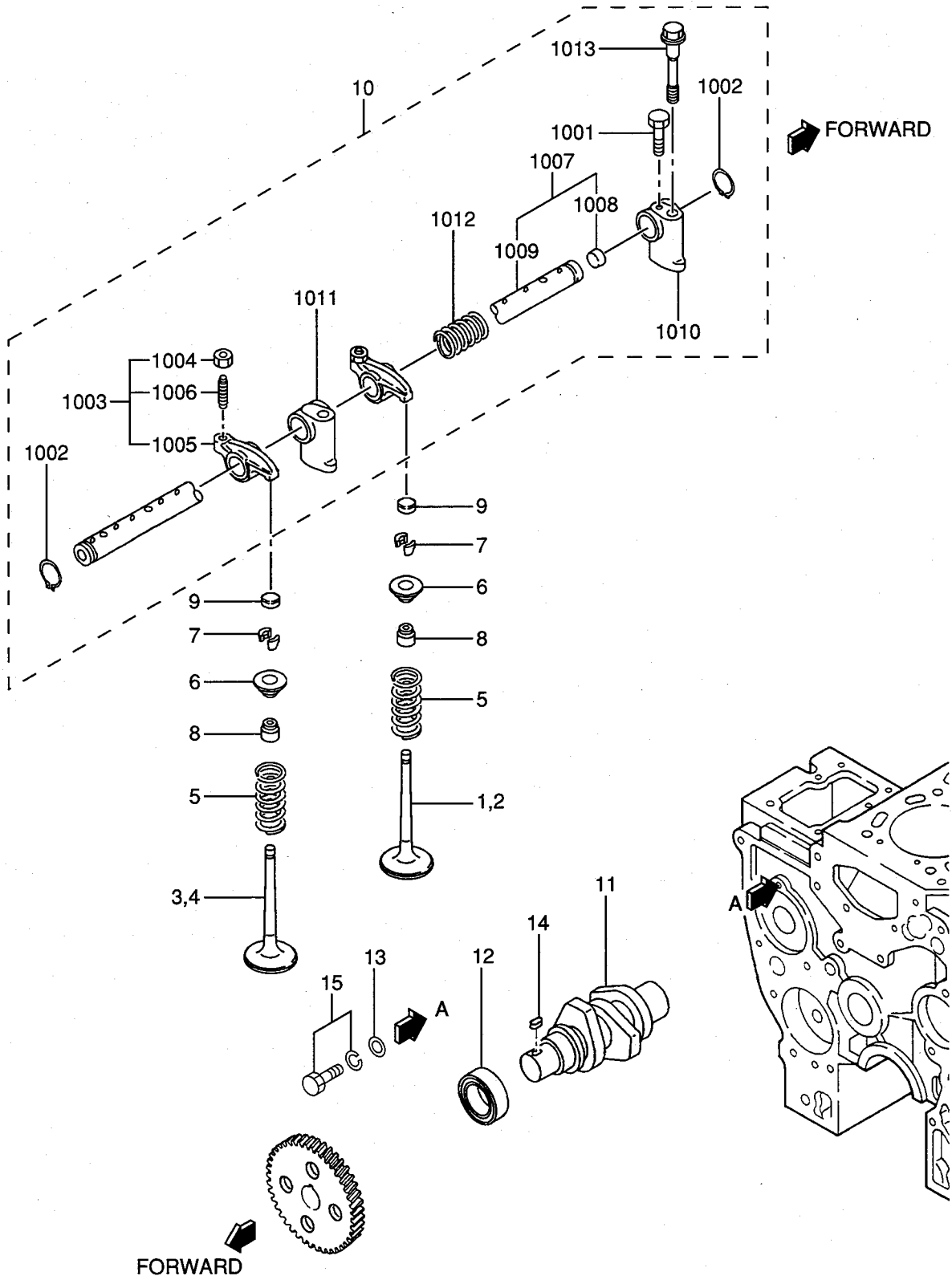


01-02 CYLINDER HEAD
(FOR 3, 4, 5)

- 1. S3L-62AG2
- 2. S3L-62APH2
- 3. S3L2-62AG2
- 4. S3L2-62APH
- 5. S3L2-62APH2

REF. NO.	PART NO.	RSC /EN PQG	PART NAME & DESCRIPTION	MODEL&QTY					APPLICABLE SERIAL NO.	MV /R ORD
				1	2	3	4	5		
1	31B01-31040		HEAD ASSY,CYLINDER	.	.	1	.	.		
2	*		HEAD SUB ASSY,CYL	.	.	1	.	.		
201	MD000245		CAP,SEALING	.	.	1	.	.		
202	MF665538		CAP,SEALING	.	.	5	.	.		
203	*		SEAT,INLET VALVE	.	.	3	.	.		
204	*		SEAT,EXHAUST VALVE	.	.	3	.	.		
205	31A01-02500		GUIDE,EXHAUST VALVE	.	.	3	.	.		
206	31A01-01600		GUIDE,INLET VALVE	.	.	3	.	.		
207	31A03-01500		JET,COMBUSTION	.	.	3	.	.		
208	*		CYLINDER HEAD	.	.	1	.	.		
3	31B01-13010		HEAD ASSY,CYLINDER	.	.	.	1	1		
4	*		HEAD SUB ASSY,CYL	.	.	.	1	1		
401	MD000245		CAP,SEALING	.	.	.	1	1		
402	MF665538		CAP,SEALING	.	.	.	5	5		
403	*		SEAT,INLET VALVE	.	.	.	3	3		
404	*		SEAT,EXHAUST VALVE	.	.	.	3	3		
405	31A01-02500		GUIDE,EXHAUST VALVE	.	.	.	3	3		
406	31A01-02600		GUIDE,INLET VALVE	.	.	.	3	3		
407	31A03-01900		JET,COMBUSTION	.	.	.	3	3		
408	*		CYLINDER HEAD	.	.	.	1	1		
5	MS661140		PLUG,TAPER	.	.	1	1	1		A
6	31A01-11100		BOLT,CYLINDER HEAD	.	.	11	11	11		
7	31B01-23200		GASKET,CYLINDER HEAD	.	.	1	1	1		A
8	MM408470		HANGER,ENGINE	.	.	2	2	2		
9	F1805-10020		BOLT,W/WASHER B/W	.	.	2	2	2		A

04-01 VALVE MECHANISM

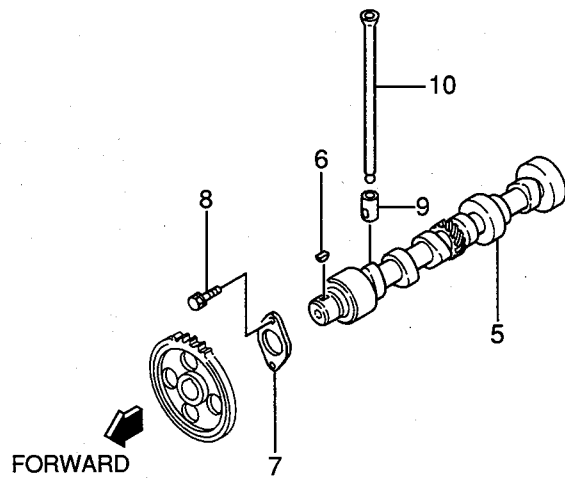
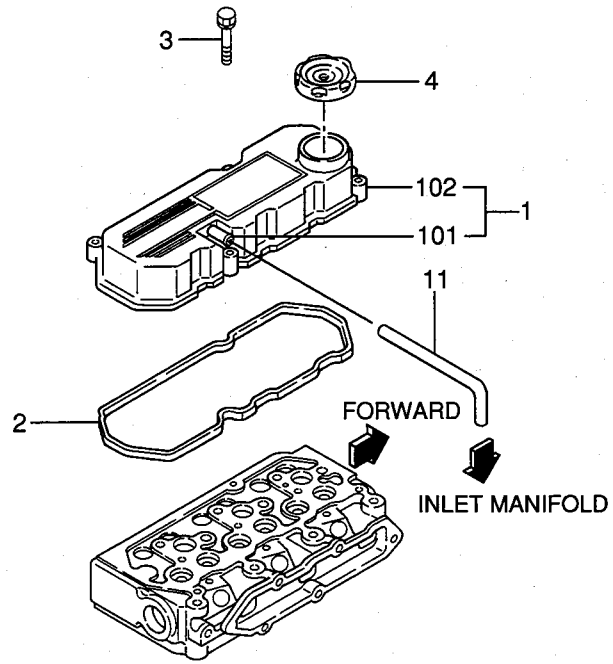


04-01 VALVE MECHANISM

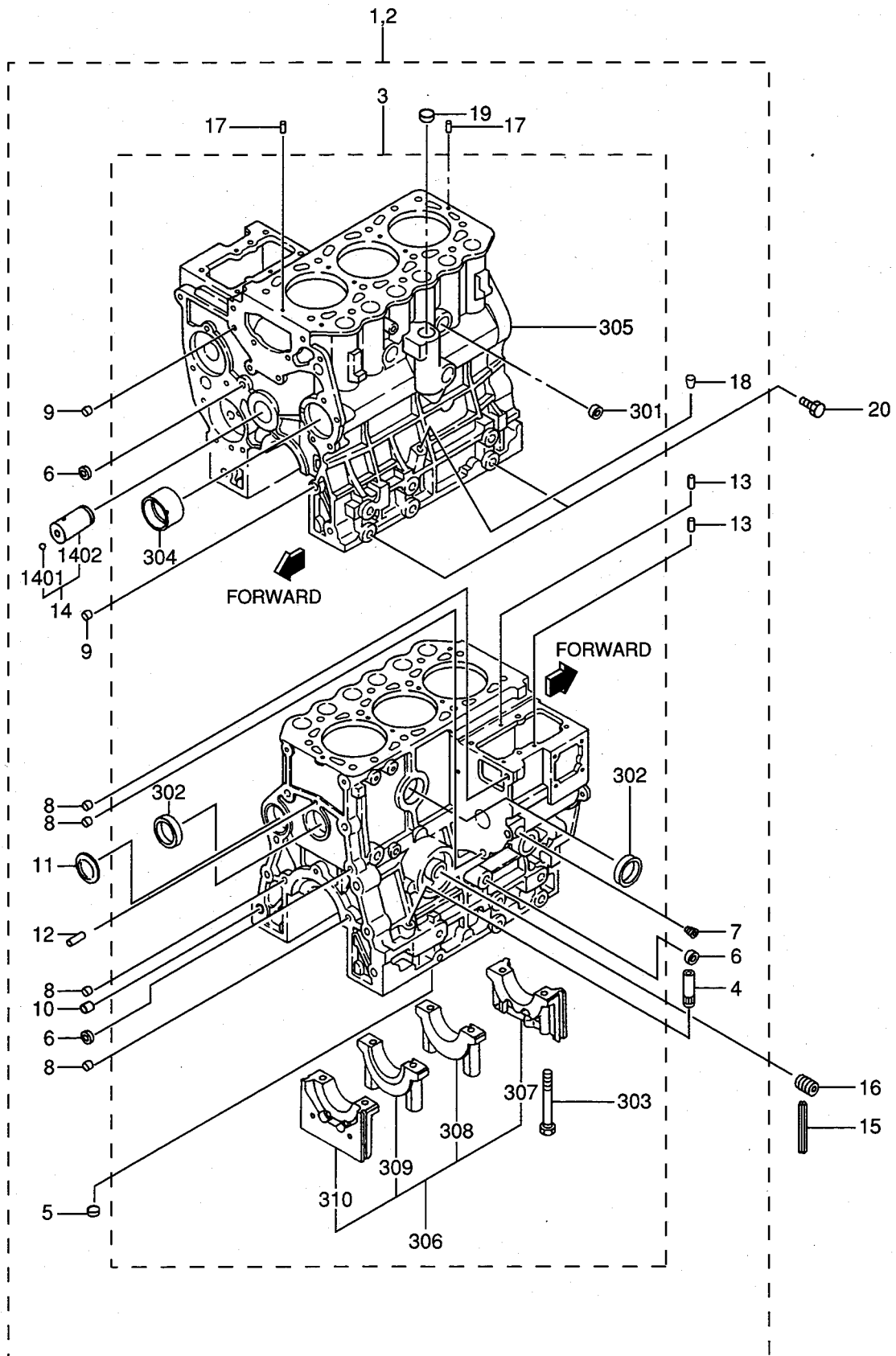
- 1. S3L-62AG2
- 2. S3L-62APH2
- 3. S3L2-62AG2
- 4. S3L2-62APH
- 5. S3L2-62APH2

REF. NO.	PART NO.	RSC /EN PQG	PART NAME & DESCRIPTION	MODEL & QTY					APPLICABLE SERIAL NO.	MV /R ORD
				1	2	3	4	5		
1	31A04-00800		VALVE, INLET	3	.	3	.	.		
2	31A04-00400		VALVE, INLET	.	3	.	3	3		
3	31A04-00900		VALVE, EXHAUST	3	.	3	.	.		
4	31A04-00500		VALVE, EXHAUST	.	3	.	3	3		
5	31A04-01301		SPRING, VALVE	6	6	6	6	6		A
6	MM433306		RETAINER, VALVE STEM	6	6	6	6	6		
7	MD016483		LOCK, VALVE SPRING	12	12	12	12	12		
8	MD115472		SEAL, VALVE STEM	6	6	6	6	6		A
9	31A04-00700		CAP, VALVE STEM	6	6	6	6	6		
10	31B04-00014		ROCKER & SHAFT ASSY	1	1	1	1	1		
1001	F1035-05010		BOLT	1	1	1	1	1		A
1002	MF522010		RING, SNAP	2	2	2	2	2		A
1003	31A04-11024		ROCKER ASSY	6	6	6	6	6		
1004	F2325-08000		NUT, JAM	6	6	6	6	6		A
1005	*		ROCKER ARM	6	6	6	6	6		
1006	32A04-02401		SCREW, ROCKER	6	6	6	6	6		
1007	31B04-01010		SHAFT ASSY, ROCKER	1	1	1	1	1		
1008	MD021204		CAP, SEALING	2	2	2	2	2		
1009	*		SHAFT, ROCKER	1	1	1	1	1		
1010	31A04-34100		BRACKET, ROCKER SHAFT	1	1	1	1	1		
1011	31A04-34300		BRACKET, ROCKER SHAFT	2	2	2	2	2		
1012	32C04-04500		SPRING, ROCKER	2	2	2	2	2		
1013	32C04-06100		BOLT, ROCKER BRACKET	3	3	3	3	3		
11	31B65-01200		SHAFT, FUEL INJ PUMP	1	1	1	1	1		
12	MD703856		BEARING, RADIAL BALL	1	1	1	1	1		A
13	MD000425		WASHER	1	1	1	1	1		A
14	MF476018		KEY, SUNK	1	1	1	1	1		
15	F1805-08016		BOLT, W/WASHER B/W	1	1	1	1	1		A

04-02 ROCKER COVER & CAMSHAFT



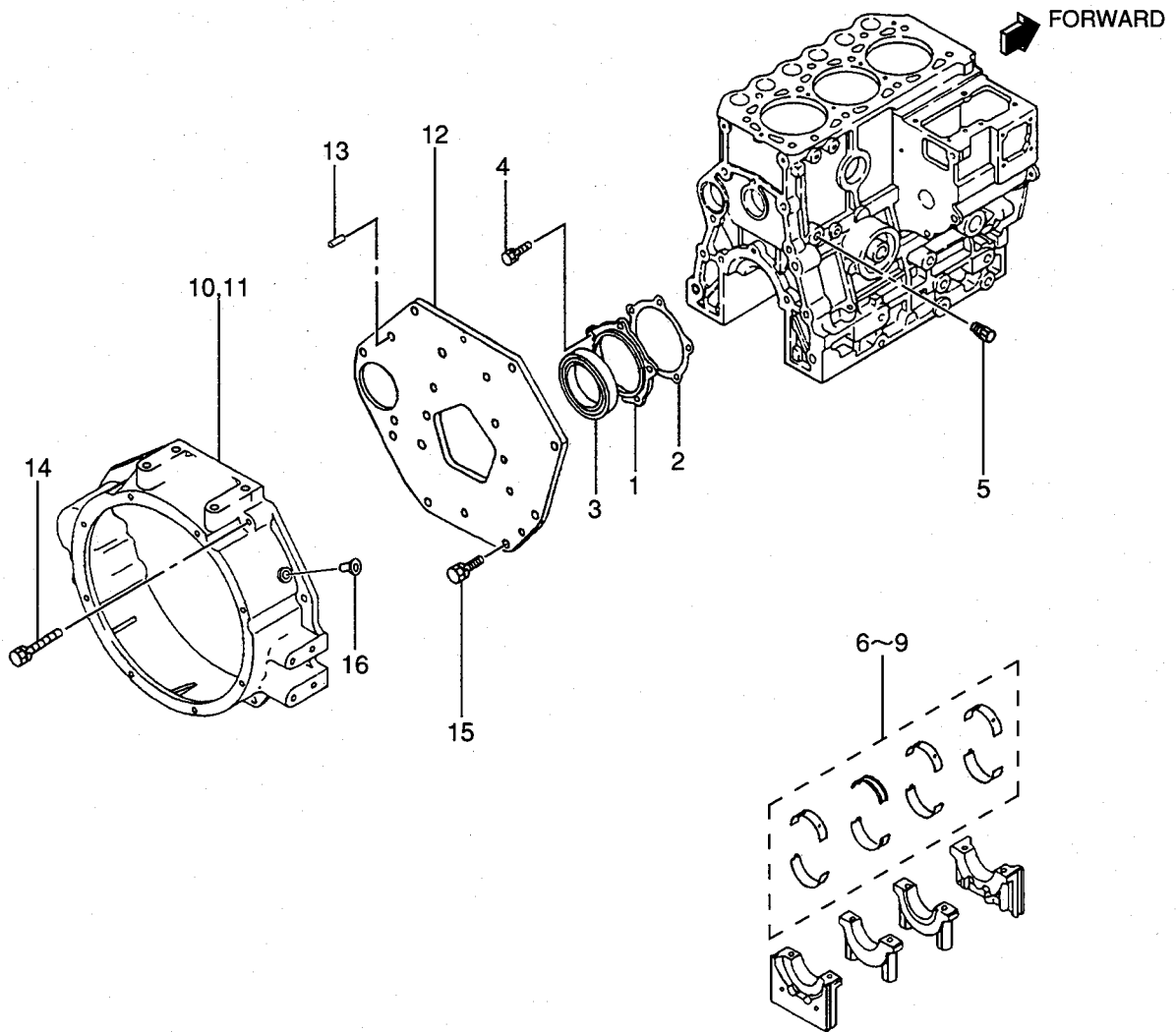
07-01 CRANKCASE ASSY



07-01 CRANKCASE ASSY

- 1. S3L-62AG2
- 2. S3L-62APH2
- 3. S3L2-62AG2
- 4. S3L2-62APH
- 5. S3L2-62APH2

REF. NO.	PART NO.	RSC /EN PQG	PART NAME & DESCRIPTION	MODEL&QTY					APPLICABLE SERIAL NO.	MV /R ORD
				1	2	3	4	5		
1	31B07-32011		BLOCK ASSY,CYLINDER	.	1	.	1	1		
2	31B07-13011		BLOCK ASSY,CYLINDER	1	.	1	.	.		
3	*		BLOCK SUB ASSY,CYL	1	1	1	1	1		
301	04826-22000		CAP,SEALING	2	2	2	2	2		
302	04826-23500		CAP,SEALING	2	2	2	2	2		
303	31A07-00801		BOLT,METAL CAP	8	8	8	8	8		A
304	31A07-03100		BUSH,CAMSHAFT	1	1	1	1	1		
305	*		BLOCK,CYLINDER	1	1	1	1	1		
306	*		CAP SET,METAL	1	1	1	1	1		
307	*		CAP,METAL FRONT	1	1	1	1	1		
308	*		CAP,METAL NO.2	1	1	1	1	1		
309	*		CAP,METAL NO.3	1	1	1	1	1		
310	*		CAP,METAL REAR	1	1	1	1	1		
4	MM430613		GUIDE,OIL LEVEL GAGE	1	1	1	1	1		
5	MF665532		CAP,SEALING	1	1	1	1	1		
6	MF665533		CAP,SEALING	3	3	3	3	3		
7	MS661140		PLUG,TAPER	.	1	.	1	1		A
8	MS471104		BUSHING,KNOCK	4	4	4	4	4		
9	MS471105		BUSHING,KNOCK	2	2	2	2	2		
10	MS471110		BUSHING,KNOCK	1	1	1	1	1		
11	MF665511		PLUG,EXPANSION	1	1	1	1	1		A
12	MF472404		PIN,DOWEL	1	1	1	1	1		A
13	MM409645		PIN,DOWEL	2	2	2	2	2		A
14	31A23-00051		SHAFT ASSY,IDLER	1	1	1	1	1		
1401	F8000-08000		BALL,STEEL	1	1	1	1	1		A
1402	*		SHAFT,IDLER	1	1	1	1	1		
15	31A07-12200		SEAL,SIDE	4	4	4	4	4		
16	30L07-00700		SHAFT,OIL FILTER	1	1	1	1	1		
17	F2846-05000		PIN,DOWEL	2	2	2	2	2		A
18	MD024256		PLUG,TAPER	1	1	1	1	1		A
19	MF665537		CAP,SEALING	1	1	1	1	1		
20	F1035-12025		BOLT	4	4	4	4	4		A



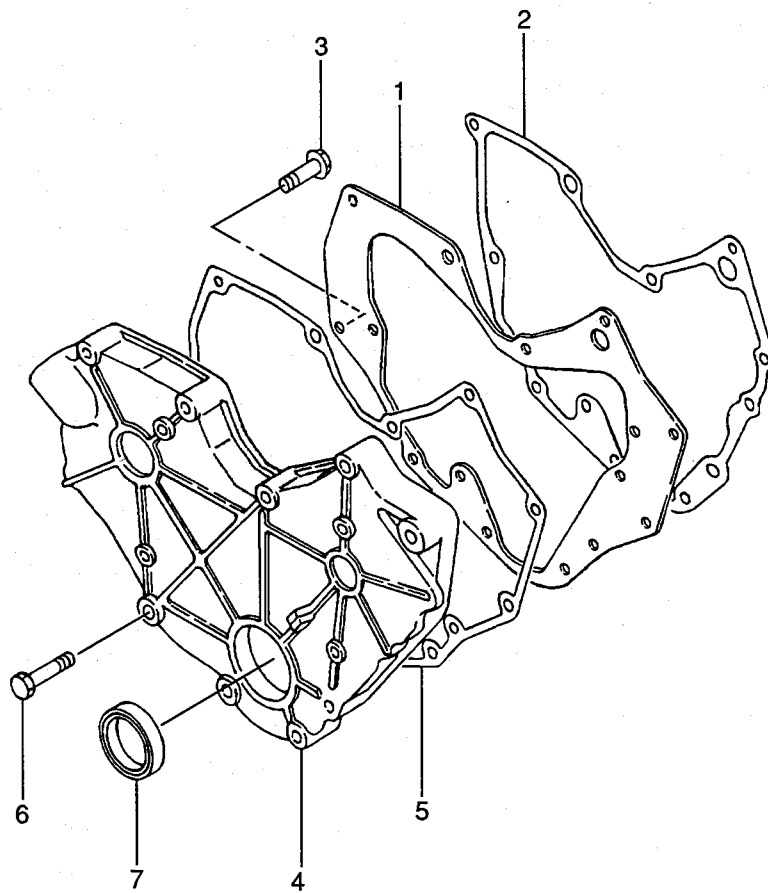
07-02

CRANKCASE

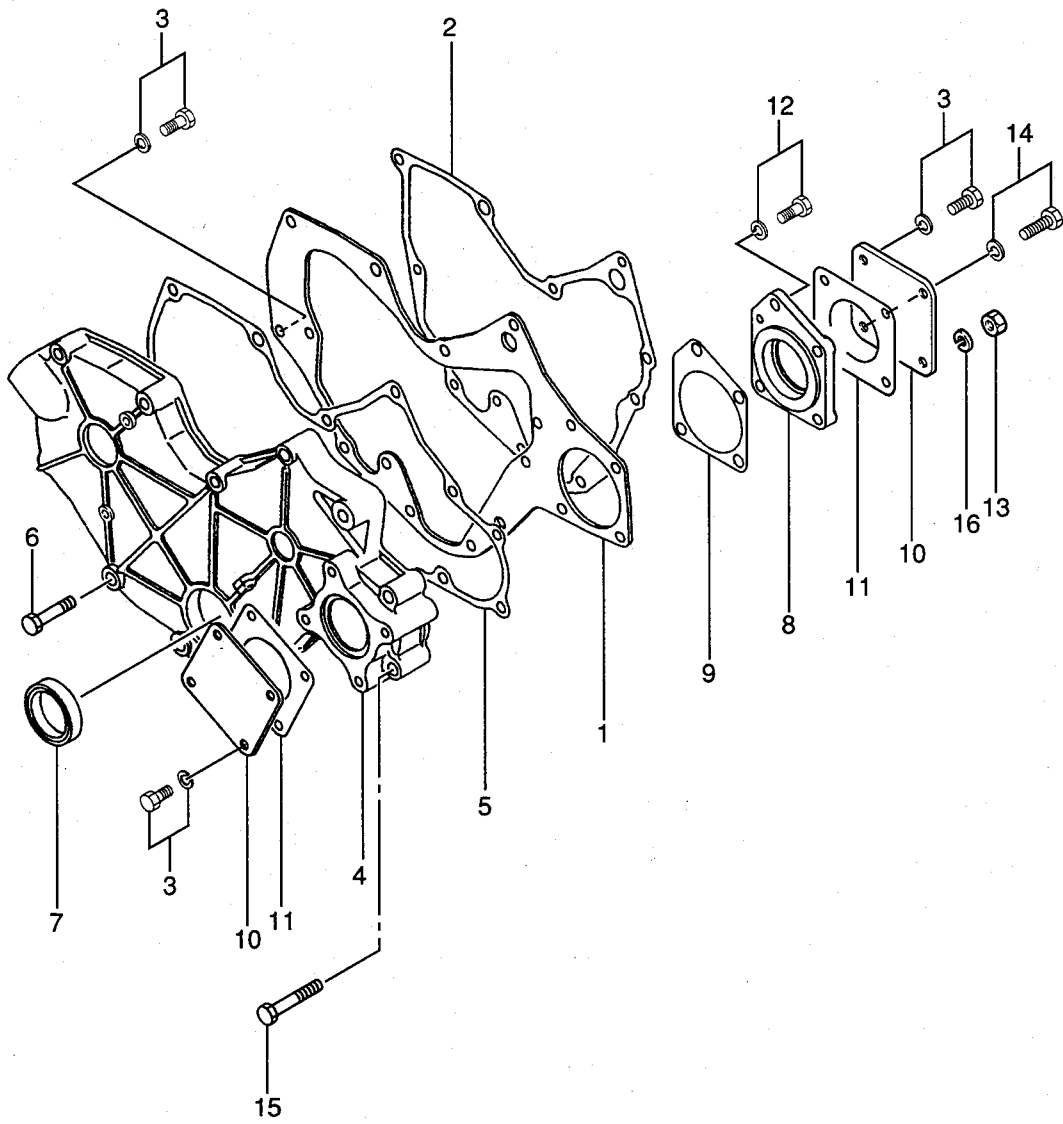
- 1. S3L-62AG2
- 2. S3L-62APH2
- 3. S3L2-62AG2
- 4. S3L2-62APH
- 5. S3L2-62APH2

REF. NO.	PART NO.	RSC /EN PQG	PART NAME & DESCRIPTION	MODEL&QTY					APPLICABLE SERIAL NO.	MV /R ORD
				1	2	3	4	5		
1	31A07-11601		CASE,OIL SEAL	1	1	1	1	1		
2	31A07-11701		GASKET,OIL SEAL CASE	1	1	1	1	1		
3	31A07-02300		SEAL,OIL	1	1	1	1	1		
4	F1035-08020		BOLT	5	5	5	5	5		
5	MD000269		PLUG,TAPER	1	1	1	1	1		
6	MM437880		METAL SET STD	1	1	1	1	1		
7	MM437881		METAL SET U.S 0.25	1	1	1	1	1		
8	MM437882		METAL SET U.S 0.50	1	1	1	1	1		
9	MM437883		METAL SET U.S 0.75	1	1	1	1	1		
10	30A12-01101		HOUSING,FLYWHEEL	1	.	1	.	.		
11	MM431-53801		HOUSING,FLYWHEEL	.	1	.	.	1		
12	31A07-04401		PLATE,REAR	1	1	1	1	1		
13	MM408245		PIN,KNOCK	2	2	2	.	2		
14	F1805-12050		BOLT,W/WASHER B/W	2	2	2	.	2		
15	F1805-12028		BOLT,W/WASHER B/W	.	.	.	8	.		
	F1805-12028		BOLT,W/WASHER B/W	13	13	13	.	13		
16	05534-16000		PLUG	1	1	1	.	1		

11-01 TIMING GEAR CASE
(FOR 2, 5)



TIMING GEAR CASE
(FOR 1, 3, 4)



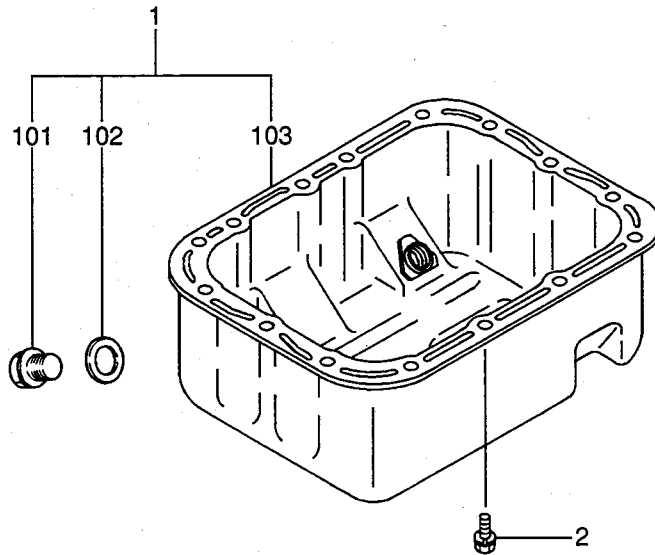
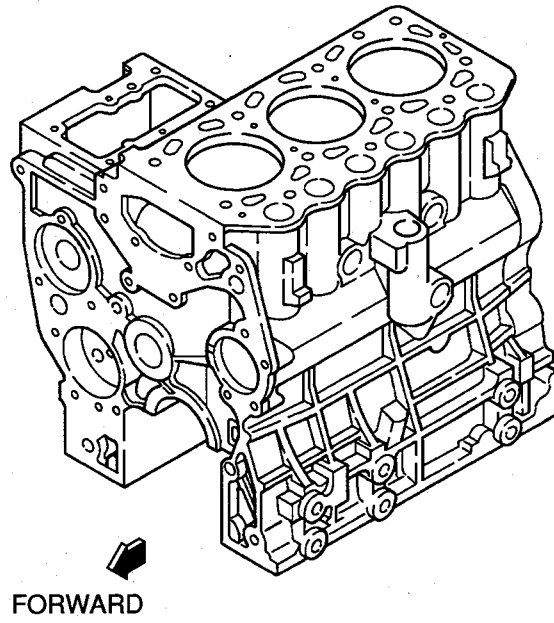
11-02

TIMING GEAR CASE
(FOR 1, 3, 4)

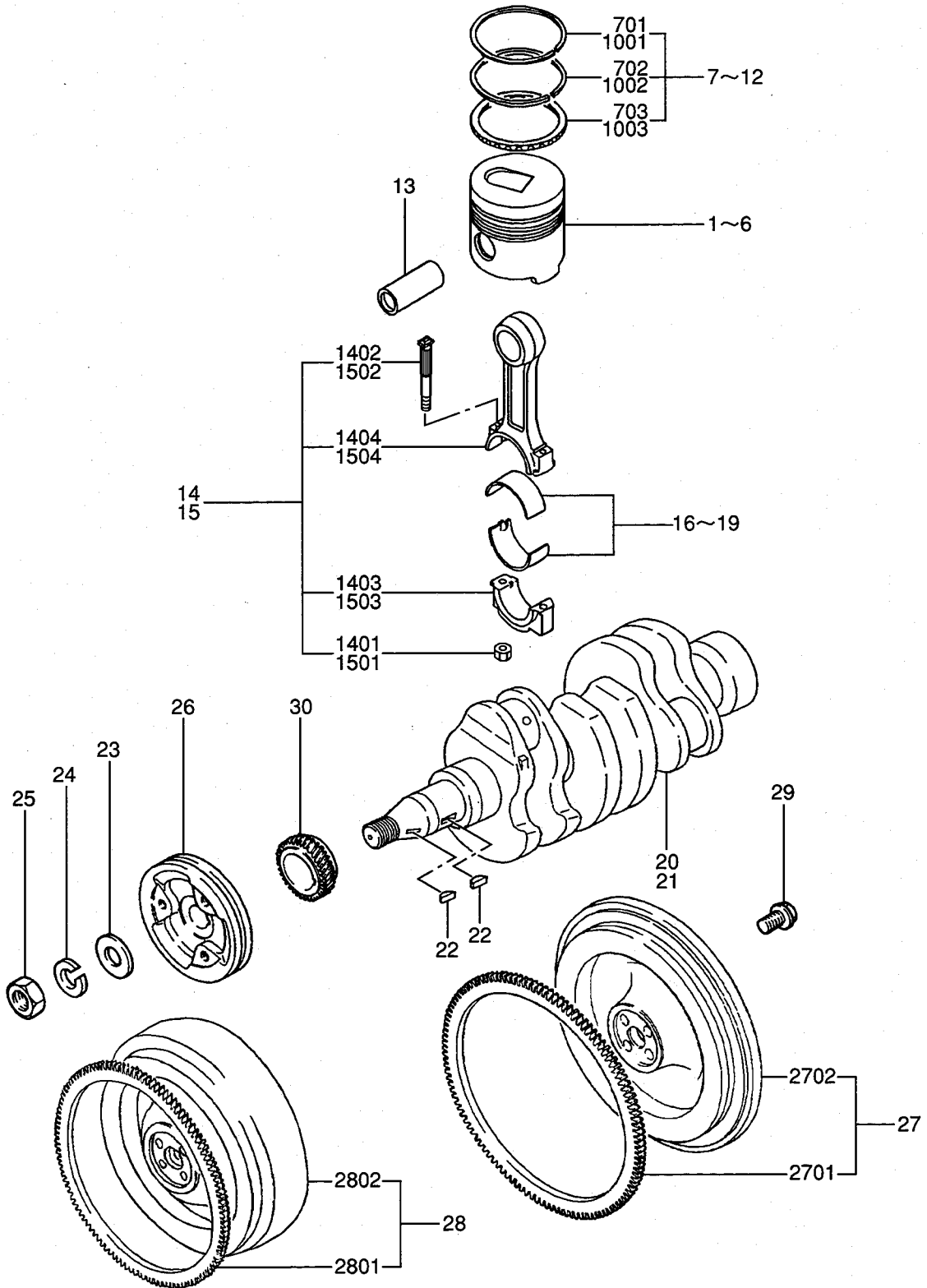
- 1. S3L-62AG2
- 2. S3L-62APH2
- 3. S3L2-62AG2
- 4. S3L2-62APH
- 5. S3L2-62APH2

REF. NO.	PART NO.	RSC /EN PQG	PART NAME & DESCRIPTION	MODEL&QTY					APPLICABLE SERIAL NO.	MV /R ORD
				1	2	3	4	5		
1	31A11-02100		PLATE, FRONT	1	.	1	1	.		
2	31A07-11901		GASKET, FRONT PLATE	1	.	1	1	.		
3	F1805-08016		BOLT, W/WASHER B/W	9	.	9	9	.		A
4	31A11-00802		CASE, GEAR, PTO	1	.	1	1	.		
5	31A11-11101		GASKET, GEAR CASE	1	.	1	1	.		
6	F1035-08045		BOLT	8	.	8	8	.		A
7	MDO08762		SEAL, OIL	1	.	1	1	.		A
8	31A11-05101		HOUSING, GEAR PUMP	1	.	1	1	.		
9	31A11-05201		GASKET, HOUSING	1	.	1	1	.		
10	MM401205		COVER, OIL PUMP	2	.	2	2	.		
11	30A11-00101		GASKET, O/PUMP COVER	2	.	2	2	.		
12	F1805-08030		BOLT, W/WASHER B/W	1	.	1	1	.		A
13	MF430005		NUT	2	.	2	2	.		A
14	F1805-08035		BOLT, W/WASHER B/W	1	.	1	1	.		A
15	F1035-08070		BOLT	2	.	2	2	.		A
16	MF450405		WASHER, SPRING	2	.	2	2	.		A

OIL PAN

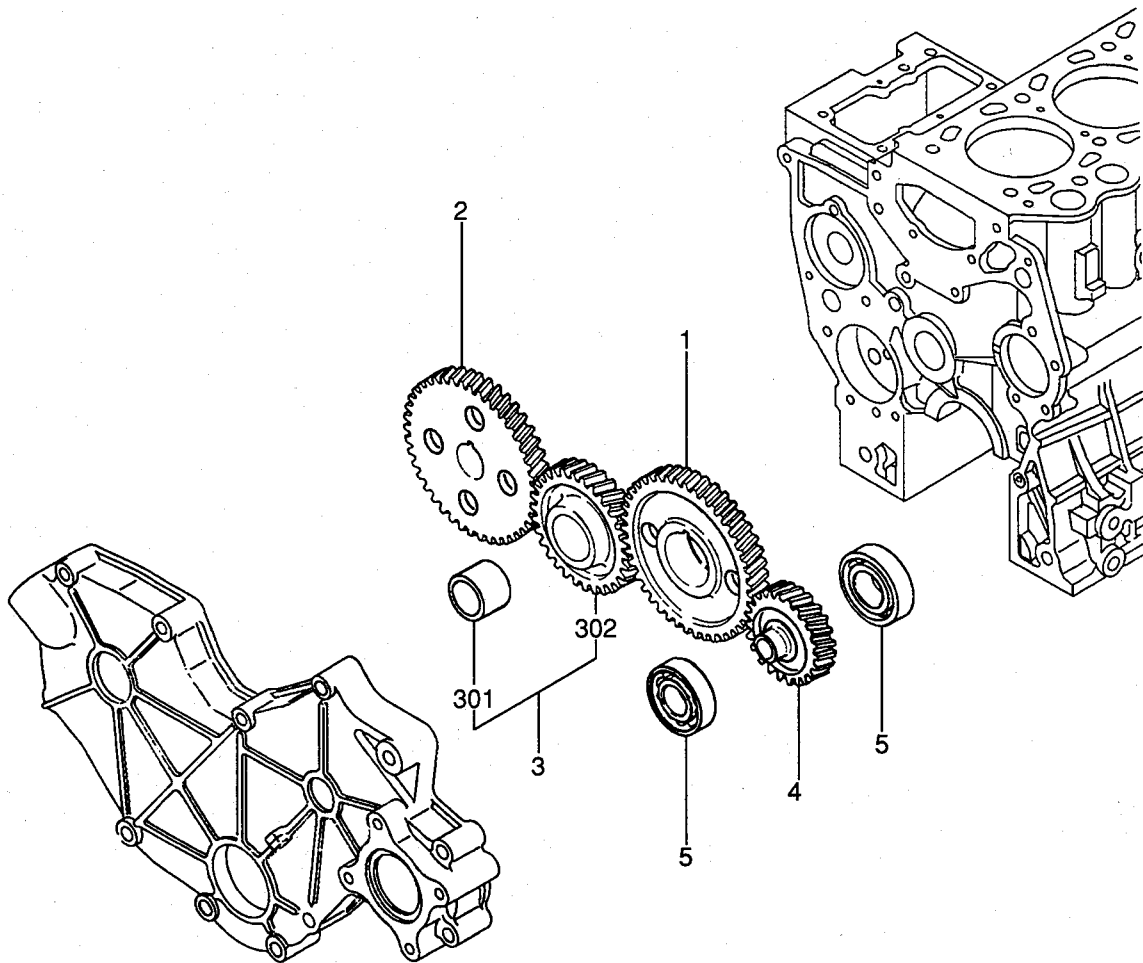


MAIN MOVING PARTS

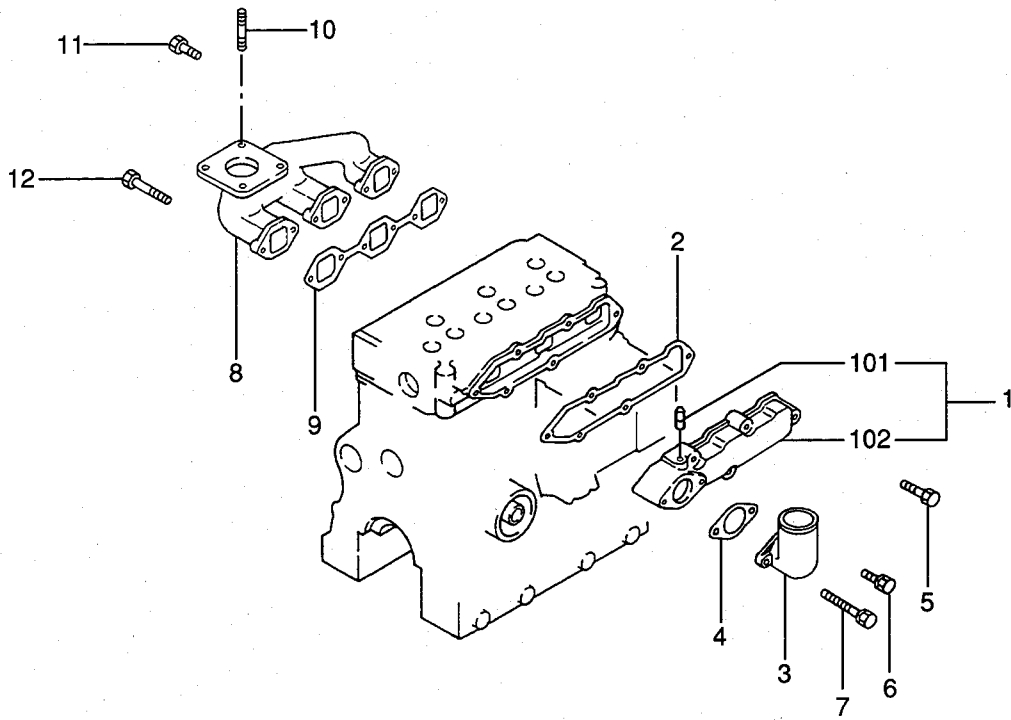


REF. NO.	PART NO.	RSC /EN PQG	PART NAME & DESCRIPTION	MODEL&QTY					APPLICABLE SERIAL NO. FROM@--@UPTO	M /R D
				1	2	3	4	5		
1	31A17-11100		PISTON STD	3	.	3	.	.		A
2	31A17-11200		PISTON O.S 0.25	3	.	3	.	.		A
3	31A17-11300		PISTON O.S 0.50	3	.	3	.	.		A
4	31A17-07100		PISTON STD	.	3	.	3	3		A
5	31A17-07200		PISTON O.S 0.25	.	3	.	3	3		A
6	31A17-07300		PISTON O.S 0.50	.	3	.	3	3		A
7	MM433921		RING SET,PISTON STD	3	.	3	.	.		A
701	*		RING,PISTON NO.1	3	.	3	.	.		A
702	*		RING,PISTON NO.2	3	.	3	.	.		A
703	*		RING ASSY,OIL	3	.	3	.	.		A
8	MM433922		RING SET,PISTON O.S 0.25	3	.	3	.	.		A
9	MM433923		RING SET,PISTON O.S 0.50	3	.	3	.	.		A
10	31A17-00010		RING SET,PISTON STD	.	3	.	3	3		A
1001	*		RING,PISTON NO.1	.	3	.	3	3		A
1002	*		RING,PISTON NO.2	.	3	.	3	3		A
1003	*		RING ASSY,OIL	.	3	.	3	3		A
11	31A17-00020		RING SET,PISTON O.S 0.25	.	3	.	3	3		A
12	31A17-00030		RING SET,PISTON O.S 0.50	.	3	.	3	3		A
13	31A17-10602		PIN,PISTON	3	3	3	3	3		A
14	31B19-10024		ROD ASSY,CONNECTING	3	3	.	.	.		A
1401	MDO06704		NUT,CONNECTING ROD	6	6	.	.	.		A
1402	MDO21105		BOLT,CONNECTING ROD	6	6	.	.	.		A
1403	*		CAP,CONNECTING ROD	3	3	.	.	.		A
1404	*		CONNECTING ROD	3	3	.	.	.		A
15	31B19-01023		ROD ASSY,CONNECTING	.	.	3	3	3		A
1501	MDO06704		NUT,CONNECTING ROD	.	.	6	6	6		A
1502	MDO21105		BOLT,CONNECTING ROD	.	.	6	6	6		A
1503	*		CAP,CONNECTING ROD	.	.	3	3	3		A
1504	*		CONNECTING ROD	.	.	3	3	3		A
16	MM437305		METAL SET,CON-ROD STD	3	3	3	3	3		A
17	30A19-00010		METAL SET,CON-ROD U.S 0.25	3	3	3	3	3		A
18	30A19-00020		METAL SET,CON-ROD U.S 0.50	3	3	3	3	3		A
19	30A19-00030		METAL SET,CON-ROD U.S 0.75	3	3	3	3	3		A
20	31B20-00100		CRANKSHAFT	1	1	.	.	.		A
21	31B20-00200		CRANKSHAFT	.	.	1	1	1		A
22	MF476215		KEY,WOODRUFF	2	2	2	2	2		A
23	MF450010		WASHER,PLAIN	1	1	1	1	1		A
24	MF450410		WASHER,SPRING	1	1	1	1	1		A
25	MF430126		NUT	1	1	1	1	1		A
26	31B20-02400		PULLEY,CRANKSHAFT	1	1	1	1	1		A
27	31B21-00090		FLYWHEEL SUB ASSY	.	1	.	1	1		A
2701	MDO24812		GEAR,RING	.	1	.	1	1		A
2702	*		FLYWHEEL	.	1	.	1	1		A
28	31B21-01080		FLYWHEEL SUB ASSY	1	.	1	.	.		A
2801	MDO24812		GEAR,RING	1	.	1	.	.		A
2802	*		FLYWHEEL	1	.	1	.	.		A
29	MD952231		BOLT,DRIVE PLATE	4	4	4	4	4		A
30	31A23-01302		GEAR,CRANKSHAFT Z=28	1	1	1	1	1		A

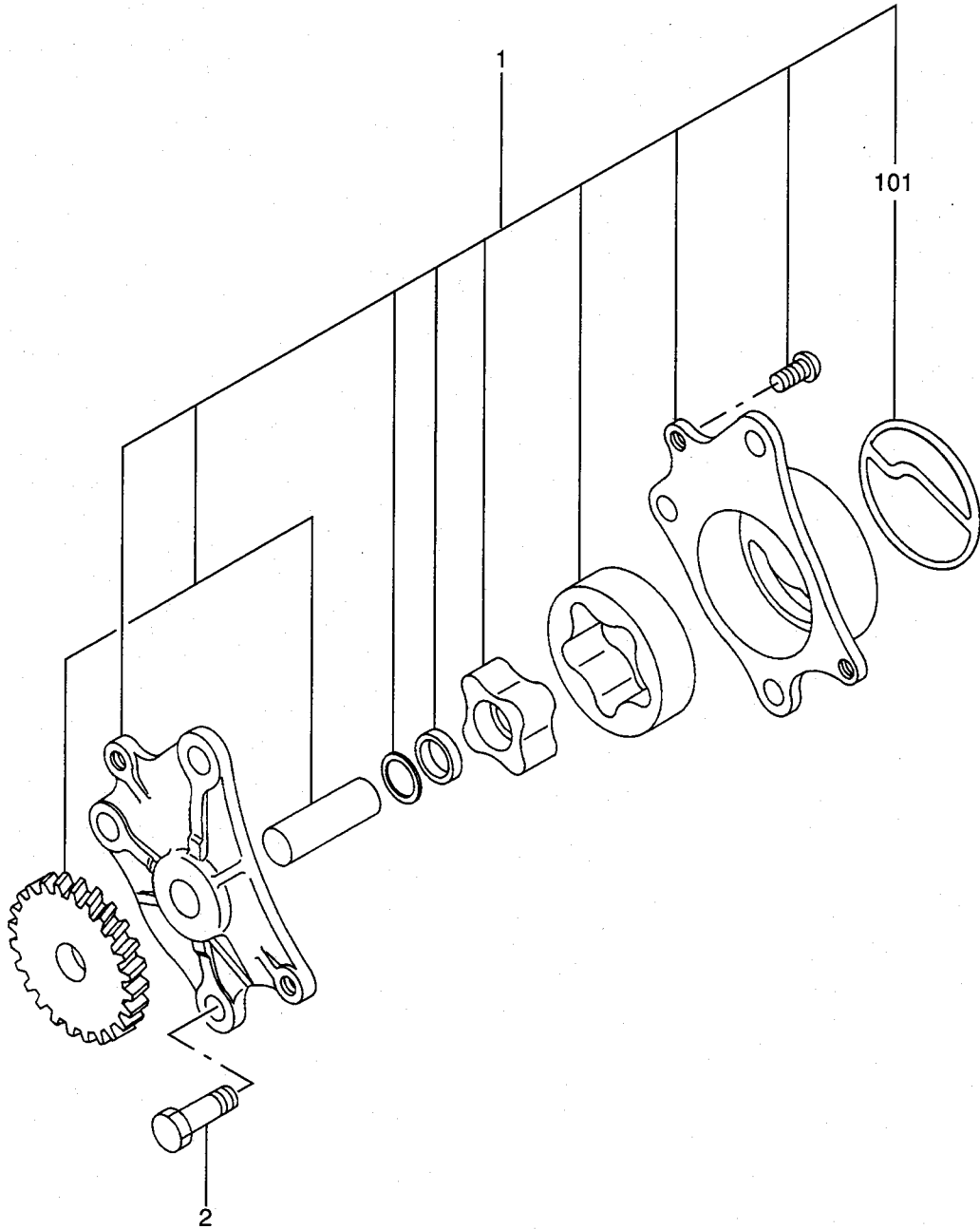
TIMING GEAR



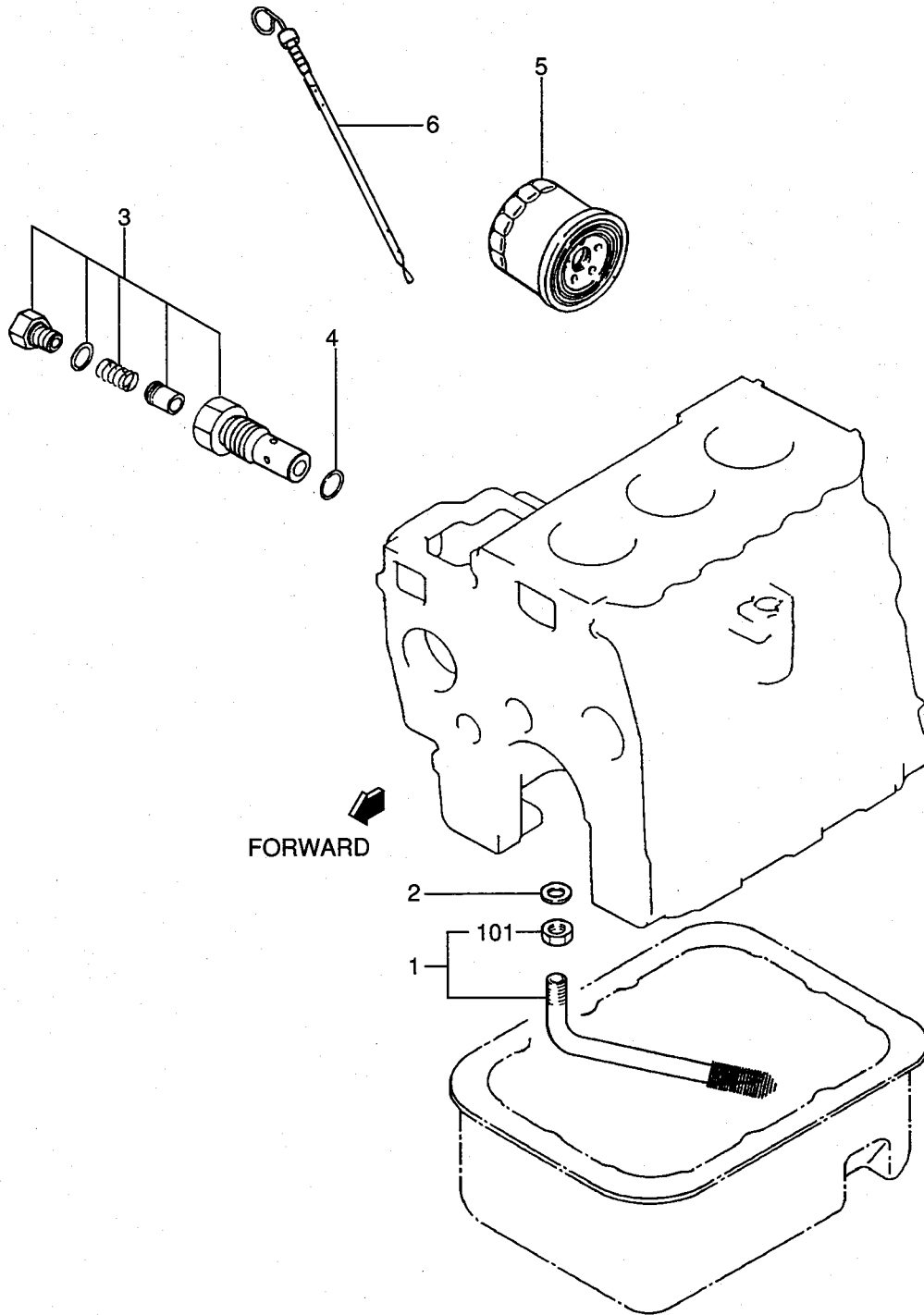
INLET & EXHAUST MANIFOLD



REF. NO.	PART NO.	RSC /EN PQG	PART NAME & DESCRIPTION	MODEL&QTY					APPLICABLE SERIAL NO. FROM@--@UPTORD	MV /R ORD
				1	2	3	4	5		
1	31B30-10010		COVER ASSY, INLET	1	1	1	1	1		
101	*		PIPE	1	1	1	1	1		
102	*		COVER, INLET	1	1	1	1	1		
2	31B30-00902		GASKET, INLET COVER	1	1	1	1	1		
3	31A30-00300		PIPE, INLET	1	1	1	1	1		
4	31A30-00801		GASKET, INLET PIPE	1	1	1	1	1		
5	F1805-08035		BOLT, W/WASHER B/W	5	5	5	5	5		A
6	F1805-08020		BOLT, W/WASHER B/W	1	1	1	1	1		A
7	F1805-08065		BOLT, W/WASHER B/W	1	1	1	1	1		A
8	31B32-00100		MANIFOLD, EXHAUST	1	1	1	1	1		
9	31B32-01200		GASKET, EXHAUST MANF	1	1	1	1	1		
10	MF401936		STUD	4	4	4	4	4		
11	F1035-08020		BOLT	4	4	4	4	4		A
12	F1035-08055		BOLT	2	2	2	2	2		A



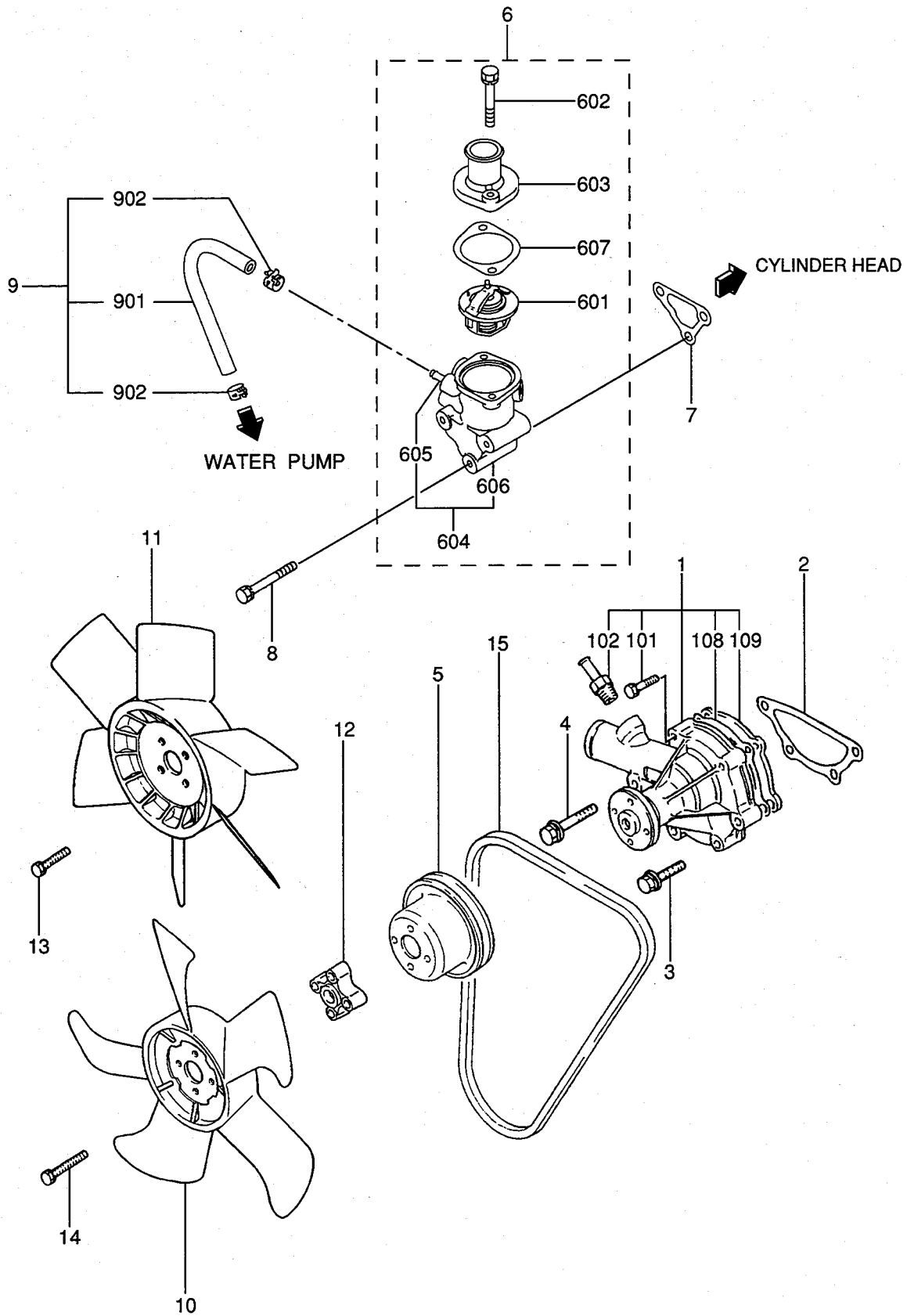
NOTE ; The shaft and inner rotor and gear which are force fitted to each other are not to be supplied individually.



- 1. S3L-62AG2
- 2. S3L-62APH2
- 3. S3L2-62AG2
- 4. S3L2-62APH
- 5. S3L2-62APH2

REF. NO.	PART NO.	RSC / EN / PGG	PART NAME & DESCRIPTION	MODEL&QTY					APPLICABLE SERIAL NO.	MV / R / D	
				1	2	3	4	5			
1	31A35-05040		STRAINER ASSY	1	1	1	1	1			A
101	MF430729		NUT, JAM	1	1	1	1	1			A
2	MF660036		GASKET	1	1	1	1	1			A
3	32A36-05012		VALVE ASSY, RELIEF	1	1	1	1	1			A
4	34340-00700		GASKET	1	1	1	1	1			A
5	30A40-00103		FILTER ASSY, OIL	1	1	1	1	1			A
6	31A42-00300		GAGE, OIL LEVEL	1	1	1	1	1			A

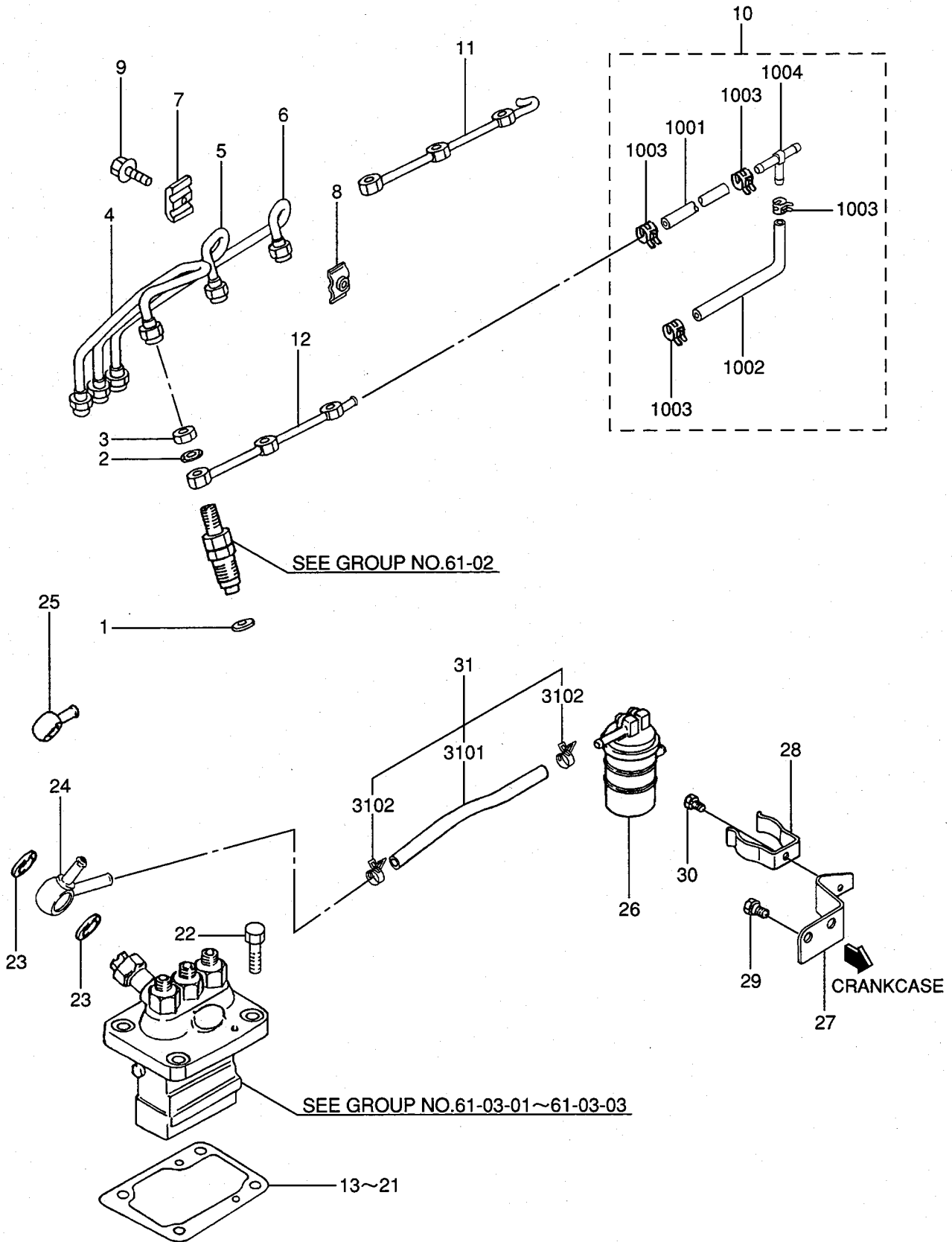
COOLING SYSTEM



- 1. S3L-62AG2
- 2. S3L-62APH2
- 3. S3L2-62AG2
- 4. S3L2-62APH
- 5. S3L2-62APH2

REF. NO.	PART NO.	RSC / EN PGG	PART NAME & DESCRIPTION	MODEL & QTY					APPLICABLE SERIAL NO.	MV / R
				1	2	3	4	5		
1	MM409302		PUMP ASSY, WATER	1	1	1	1	1		
101	F1805-06030		BOLT, W/WASHER B/W	2	2	2	2	2		A
102	MM409314		JOINT, WATER PUMP	1	1	1	1	1		
108	MM409326		GASKET, WATER PUMP	1	1	1	1	1		A
109	MM409327		PLATE, WATER PUMP	1	1	1	1	1		
2	30H45-00101		GASKET, WATER PUMP	1	1	1	1	1		
3	F1825-08045		BOLT, W/WASHER B/W	3	3	3	3	3		A
4	F1825-08060		BOLT, W/WASHER B/W	1	1	1	1	1		A
5	31A45-20700		PULLEY, WATER PUMP	1	1	1	1	1		
6	31A46-01060		THERMOSTAT ASSY	1	1	1	1	1		
601	MDO01370		THERMOSTAT	1	1	1	1	1		
602	MF140227		BOLT, FLANGE	2	2	2	2	2		
603	MM409-31301		COVER, THERMOSTAT	1	1	1	1	1		
604	31A46-00062		CASE ASSY, THERMOSTAT	1	1	1	1	1		
605	*		PIPE, THERMOSTAT	1	1	1	1	1		
606	*		CASE, THERMOSTAT	1	1	1	1	1		
607	31A46-01200		GASKET, THERMOSTAT	1	1	1	1	1		
7	31A46-10101		GASKET, THERMO CASE	1	1	1	1	1		
8	F1805-08065		BOLT, W/WASHER B/W	3	3	3	3	3		A
9	MM413196		HOSE ASSY	1	1	1	1	1		
901	MS603014		HOSE	1	1	1	1	1		
902	MS660164		CLIP, HOSE	2	2	2	2	2		A
10	MDO09015		FAN, COOLING	.	1	.	1	1		
11	MM405-43001		FAN, COOLING	1	.	1	.	.		
12	MM434493		SPACER, FAN	.	1	.	1	1		
13	F1805-06012		BOLT, W/WASHER B/W	4	.	4	.	.		A
14	F1805-06025		BOLT, W/WASHER B/W	.	4	.	4	4		A
15	MDO41704		V-BELT	1	1	1	1	1		A

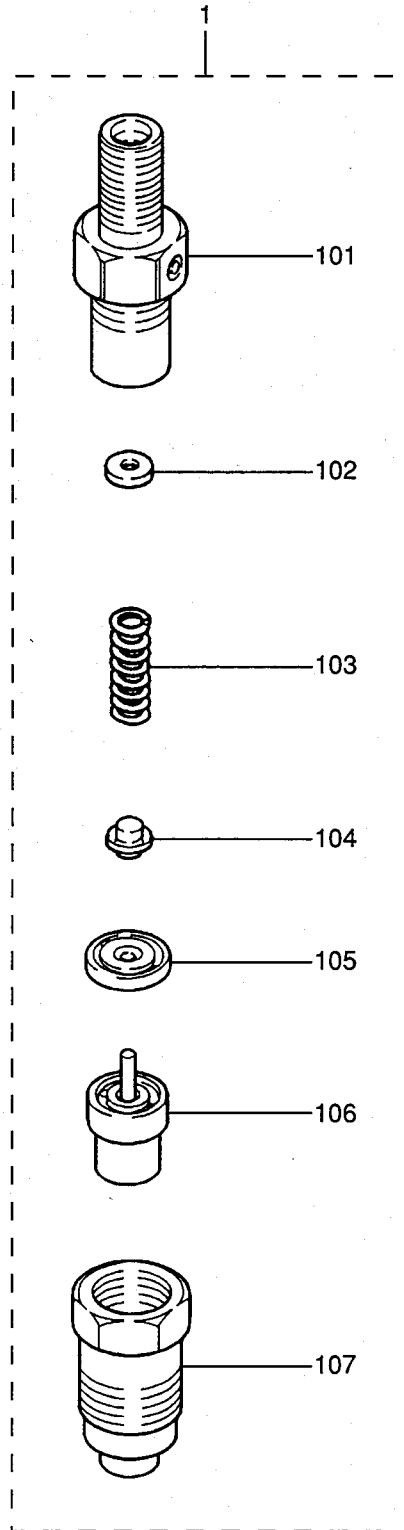
61-01 FUEL SYSTEM



61-01 FUEL SYSTEM

- 1. S3L-62AG2
- 2. S3L-62APH2
- 3. S3L2-62AG2
- 4. S3L2-62APH
- 5. S3L2-62APH2

REF. NO.	PART NO.	RSC / EN PQQ	PART NAME & DESCRIPTION	MODEL & QTY					APPLICABLE SERIAL NO.	M V / R	
				1	2	3	4	5			
1	MDO70717		GASKET, HOLDER	3	3	3	3	3			A
2	MDO68355		GASKET, FUEL RETURN	3	3	3	3	3			A
3	MDO68353		NUT	3	3	3	3	3			A
4	31A61-04100		PIPE, INJECTION NO.1	1	1	1	1	1			
5	31A61-04200		PIPE, INJECTION NO.2	1	1	1	1	1			
6	31A61-04300		PIPE, INJECTION NO.3	1	1	1	1	1			
7	MM430703		CLAMP (A)	2	2	2	2	2			
8	MM430614		CLAMP (B)	2	2	2	2	2			
9	F1825-06025		BOLT, W/WASHER	2	2	2	2	2			A
10	31B61-03500		HOSE ASSY, AIR VENT	1	.	1	.	.			
1001	MM430131		HOSE, FUEL	1	.	1	.	.			
1002	MS604043		HOSE, FUEL	1	.	1	.	.			
1003	MS660169		CLIP, HOSE	4	.	4	.	.			A
1004	31A61-01500		JOINT, THREE WAY	1	.	1	.	.			
11	31B61-02600		PIPE, FUEL LEAK-OFF	.	1	.	1	1			
12	31B61-02800		PIPE, FUEL LEAK-OFF	1	.	1	.	.			
13	MM409040		SHIM T=0.2	AR	AR	AR	AR	AR			A
14	MM409041		SHIM T=0.3	AR	AR	AR	AR	AR			A
15	MM409042		SHIM T=0.4	AR	AR	AR	AR	AR			A
16	MM409043		SHIM T=0.5	AR	AR	AR	AR	AR			A
17	MM409044		SHIM T=0.6	AR	AR	AR	AR	AR			A
18	MM409045		SHIM T=0.7	AR	AR	AR	AR	AR			A
19	MM409046		SHIM T=0.8	AR	AR	AR	AR	AR			A
20	MM409047		SHIM T=0.9	AR	AR	AR	AR	AR			A
21	MM409048		SHIM T=1.0	AR	AR	AR	AR	AR			A
22	F1035-08020		BOLT	4	4	4	4	4			A
23	MK661-12000		WASHER, SEAL	2	2	2	2	2			A
24	31B65-00100		COLLAR, UNION	1	.	1	.	.			
25	MM304916		COLLAR, UNION	.	1	.	1	1			
26	MM435190		FILTER ASSY, FUEL	1	1	1	1	1			A
27	31B62-01100		BRACKET, FUEL FILTER	1	1	1	1	1			
28	MM400880		CLAMP, FILTER	1	1	1	1	1			
29	F1805-08016		BOLT, W/WASHER	2	2	2	2	2			A
30	F1805-06012		BOLT, W/WASHER	1	1	1	1	1			A
31	30A61-04900		HOSE ASSY, FUEL	1	1	1	1	1			
3101	MS602039		HOSE, FUEL	1	1	1	1	1			
3102	MS660163		CLIP, HOSE	2	2	2	2	2			A



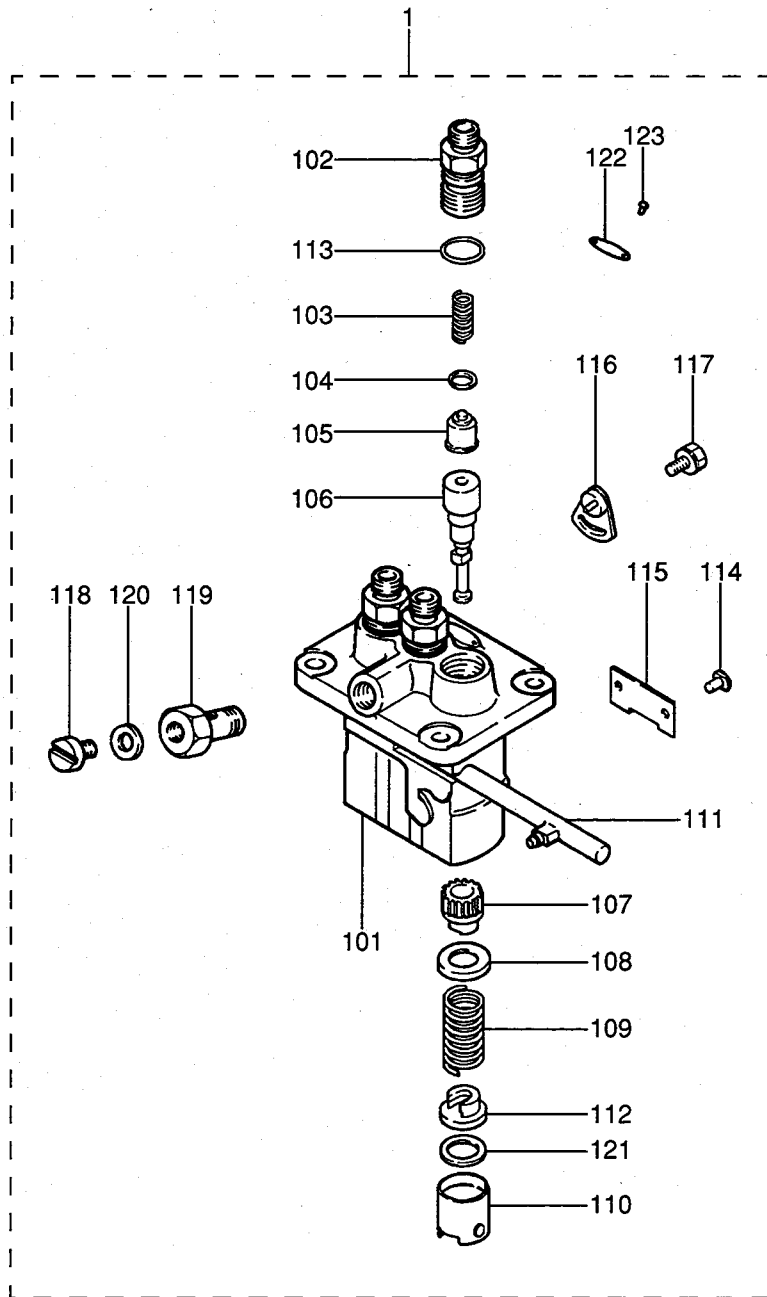
61-02

NOZZLE & NOZZLE HOLDER

- 1. S3L-62AG2
- 2. S3L-62APH2
- 3. S3L2-62AG2
- 4. S3L2-62APH
- 5. S3L2-62APH2

REF. NO.	PART NO.	RSC / EN / PGG	PART NAME & DESCRIPTION	MODEL & QTY					APPLICABLE SERIAL NO.	MV / R / D
				1	2	3	4	5		
1	MM435-94101		NOZZLE & HOLDER ASSY 093500-3840 DEN	1	1	1	1	1		
101	09311-03840		BODY SUB ASSY MM514048	1	1	1	1	1		
102	09317-51810		WASHER T=1.25 MD603490	AR	AR	AR	AR	AR		
	09317-51830		WASHER T=1.30 MD603491	AR	AR	AR	AR	AR		
	09317-51850		WASHER T=1.35 MD603492	AR	AR	AR	AR	AR		
	09317-51870		WASHER T=1.40 MD603493	AR	AR	AR	AR	AR		
	09317-51890		WASHER T=1.45 MD603494	AR	AR	AR	AR	AR		
	09317-51910		WASHER T=1.50 MD603495	AR	AR	AR	AR	AR		
	09317-51930		WASHER T=1.55 MD603496	AR	AR	AR	AR	AR		
	09317-51950		WASHER T=1.60 MD603497	AR	AR	AR	AR	AR		
	09317-51970		WASHER T=1.65 MD603498	AR	AR	AR	AR	AR		
	09317-51990		WASHER T=1.70 MD603499	AR	AR	AR	AR	AR		
103	09312-70310		SPRING, PRESSURE MM514047	1	1	1	1	1		A
104	09312-10380		PIN, PRESSURE MM501838	1	1	1	1	1		
105	09317-40070		PIECE, DISTANCE MM501841	1	1	1	1	1		
106	09340-05060		NOZZLE ASSY MD603660	1	1	1	1	1		
107	09316-41351		NUT, NOZZLE RETAINING MM514380	1	1	1	1	1		

61-03-01 INJECTION PUMP
(FOR 1, 3)

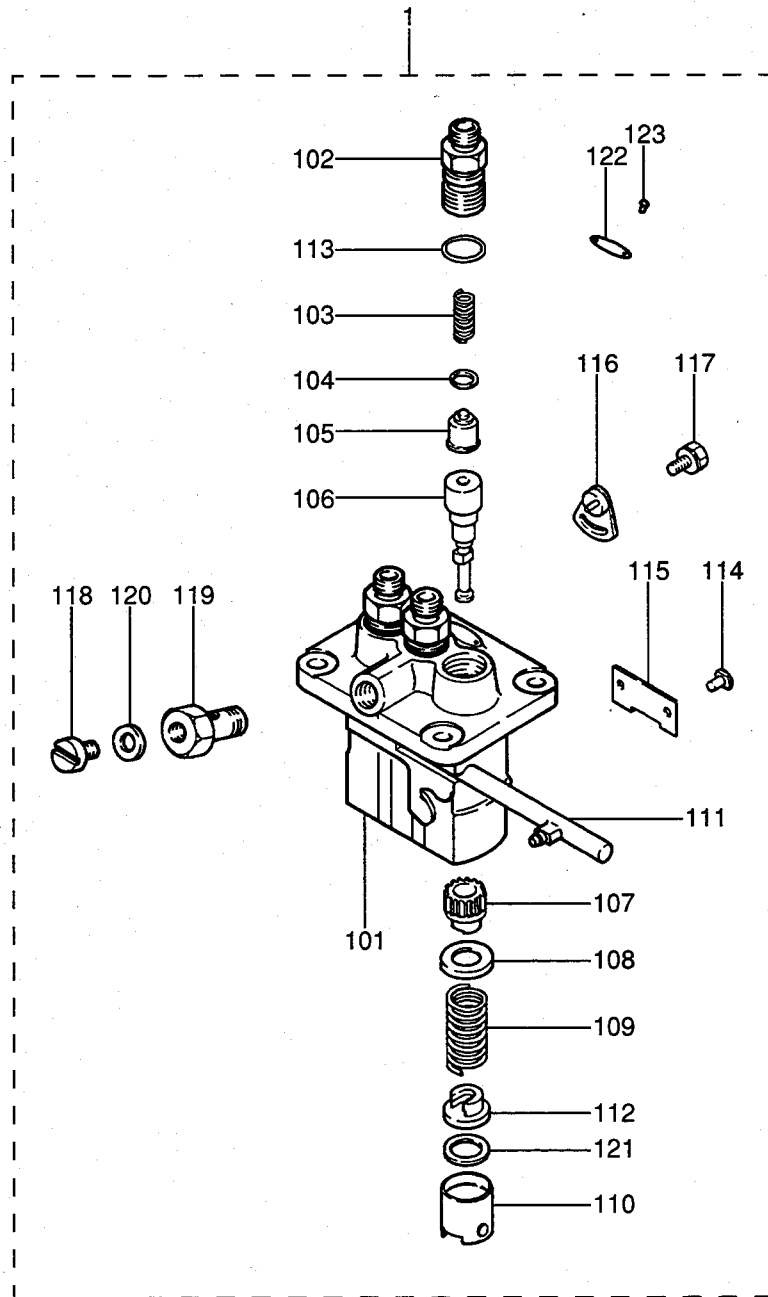


61-03-01 INJECTION PUMP
(FOR 1, 3)

- 1. S3L-62AG2
- 2. S3L-62APH2
- 3. S3L2-62AG2
- 4. S3L2-62APH
- 5. S3L2-62APH2

REF. NO.	PART NO.	RSC /EN PQG	PART NAME & DESCRIPTION	MODEL&QTY					APPLICABLE SERIAL NO.	MV /R RD		
				1	2	3	4	5				
1	31B65-03030		PUMP ASSY, FUEL INJ	094500-7240 DEN	1	.	1	.	.			
101	09011-05110		HOUSING SUB ASSY	47X01-06100	1	.	1	.	.			
102	09013-10520		HOLDER, DELIVERY	MM501507	3	.	3	.	.			
103	09013-60540		SPRING, DELIVERY	MM501161	3	.	3	.	.			
104	09013-70130		GASKET, DELIVERY	MM501856	3	.	3	.	.			
105	09014-02610		VALVE SUB ASSY	47X01-07700	3	.	3	.	.			
106	09015-05550		ELEMENT SUB ASSY	47X01-05400	3	.	3	.	.			
107	09016-10210		SLEEVE, CONTROL	MM500229	3	.	3	.	.			
108	09016-30082		SEAT, SPRING	MM501098	3	.	3	.	.			
109	09016-40170		SPRING, PLUNGER	MM500360	3	.	3	.	.			A
110	09017-00170		TAPPET SUB ASSY	MM500230	3	.	3	.	.			
111	09021-00470		RACK ASSY, CONTROL	MM501311	1	.	1	.	.			
112	09030-10060		SEAT, SPRING	MM500316	3	.	3	.	.			
113	90802-20150		O-RING	MM500438	3	.	3	.	.			A
114	09018-30050		PIN, TAPPET	MM500231	3	.	3	.	.			
115	09046-70040		PLATE	MM501162	1	.	1	.	.			
116	09006-80020		PLATE, ADJUSTING	MM514109	2	.	2	.	.			
117	94904-80800		BOLT, WASHER HEAD	MM514195	2	.	2	.	.			
118	09024-40180		SCREW, AIR BLEEDER	MM501152	1	.	1	.	.			
119	09024-50210		SCREW, HOLLOW	MM501320	1	.	1	.	.			
120	94901-81020		WASHER, PIPE UNION	MM500578	1	.	1	.	.			
121	*		SHIM	*	AR	.	AR	.	.			
122	09450-37240		PLATE, NAME	47X01-12400	1	.	1	.	.			
123	94903-00030		RIVET, SERRATION	MM500429	2	.	2	.	.			A

61-03-02 INJECTION PUMP
(FOR 2)

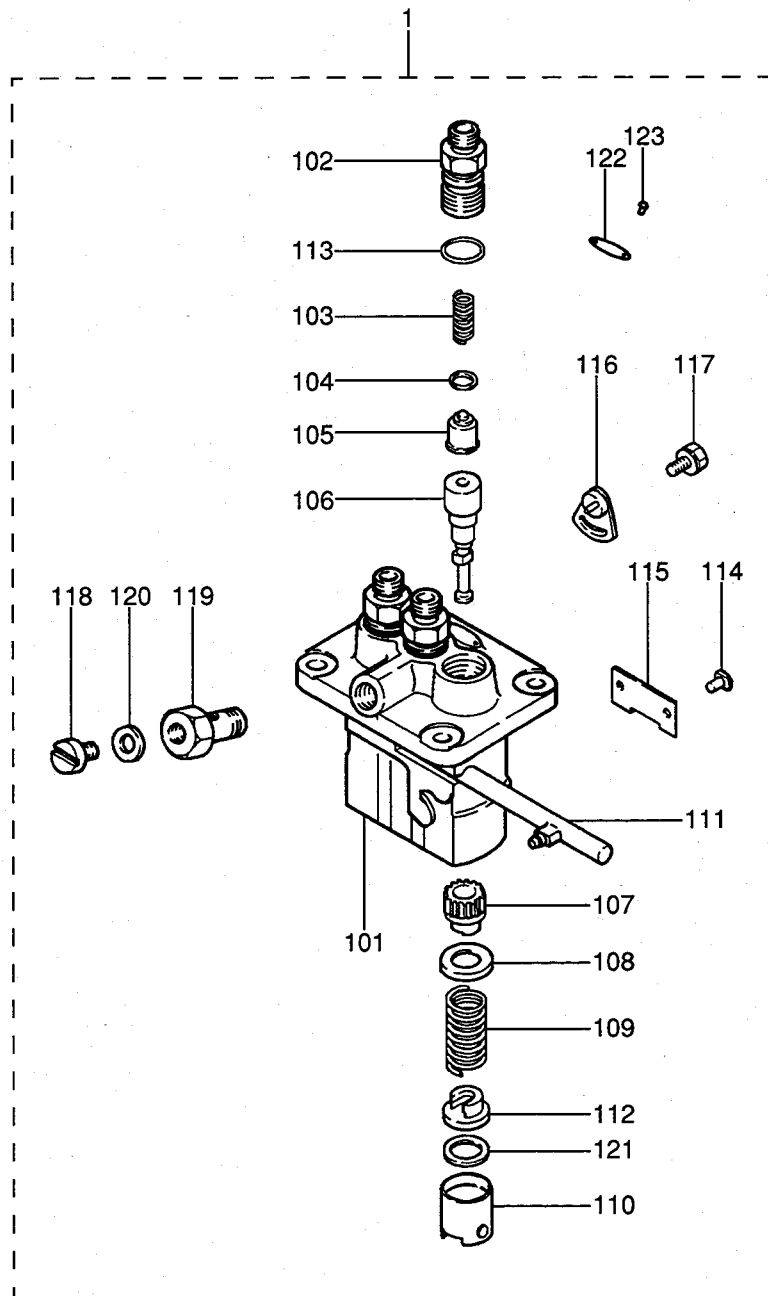


61-03-02 INJECTION PUMP
(FOR 2)

- 1. S3L-62AG2
- 2. S3L-62APH2
- 3. S3L2-62AG2
- 4. S3L2-62APH
- 5. S3L2-62APH2

REF. NO.	PART NO.	RSC /EN PQG	PART NAME & DESCRIPTION	MODEL&QTY					APPLICABLE SERIAL NO.	MV /R RD	
				1	2	3	4	5			
1	31B65-04020		PUMP ASSY,FUEL INJ	094500-7470 DEN	.	1	.	.	.		
101	09011-05110		HOUSING SUB ASSY	47X01-06100	.	1	.	.	.		
102	09013-10520		HOLDER,DELIVERY	MM501507	.	3	.	.	.		
103	09013-60540		SPRING,DELIVERY	MM501161	.	3	.	.	.		
104	09013-70130		GASKET,DELIVERY	MM501856	.	3	.	.	.		
105	09014-02610		VALVE SUB ASSY	47X01-07700	.	3	.	.	.		
106	09015-05550		ELEMENT SUB ASSY	47X01-05400	.	3	.	.	.		
107	09016-10210		SLEEVE,CONTROL	MM500229	.	3	.	.	.		
108	09016-30082		SEAT,SPRING	MM501098	.	3	.	.	.		
109	09016-40170		SPRING,PLUNGER	MM500360	.	3	.	.	.		A
110	09017-00170		TAPPET SUB ASSY	MM500230	.	3	.	.	.		
111	09021-00470		RACK ASSY,CONTROL	MM501311	.	1	.	.	.		
112	09030-10060		SEAT,SPRING	MM500316	.	3	.	.	.		
113	90802-20150		O-RING	MM500438	.	3	.	.	.		A
114	09018-30050		PIN,TAPPET	MM500231	.	3	.	.	.		
115	09046-70040		PLATE	MM501162	.	1	.	.	.		
116	09006-80020		PLATE,ADJUSTING	MM514109	.	2	.	.	.		
117	94904-80800		BOLT,WASHER HEAD	MM514195	.	2	.	.	.		
118	09024-40180		SCREW,AIR BLEEDER	MM501152	.	1	.	.	.		
119	09024-50210		SCREW,HOLLOW	MM501320	.	1	.	.	.		
120	94901-81020		WASHER,PIPE UNION	MM500578	.	1	.	.	.		
121	*		SHIM	*	.	AR	.	.	.		
122	09450-37470		PLATE,NAME	47X01-14700	.	1	.	.	.		
123	94903-00030		RIVET,SERRATION	MM500429	.	2	.	.	.		

61-03-03 INJECTION PUMP (FOR 4, 5)



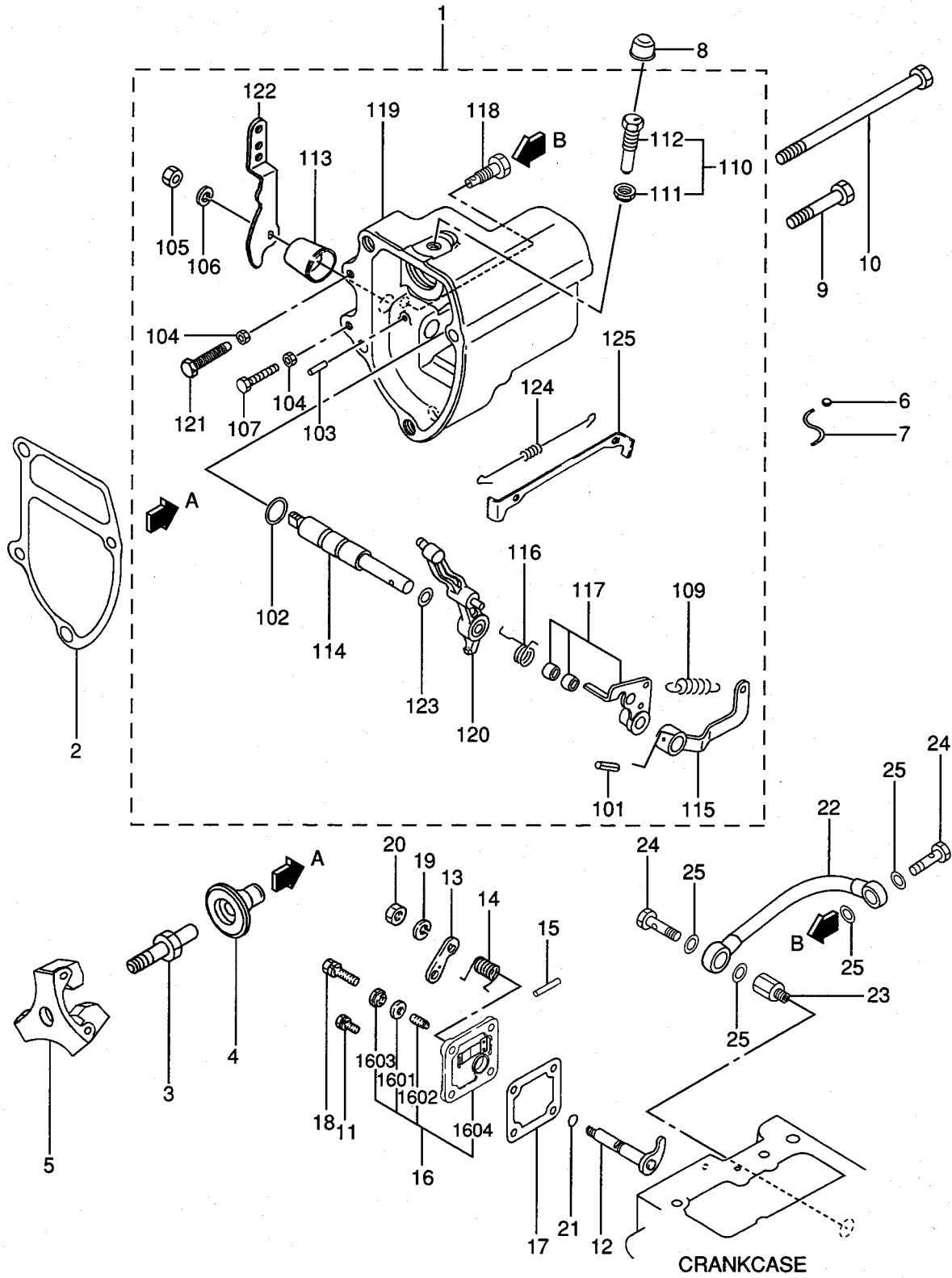
61-03-03 INJECTION PUMP
(FOR 4, 5)

1. S3L-62AG2
2. S3L-62APH2
3. S3L2-62AG2
4. S3L2-62APH
5. S3L2-62APH2

REF. NO.	PART NO.	RSC /EN PQG	PART NAME & DESCRIPTION	MODEL & QTY					APPLICABLE SERIAL NO.	MV /R ORD		
				1	2	3	4	5				
1	31B65-02030		PUMP ASSY, FUEL INJ	094500-6820	DEN	.	.	.	1	1		
101	09011-05110		HOUSING SUB ASSY	47X01-06100		.	.	.	1	1		
102	09013-10520		HOLDER, DELIVERY	MM501507		.	.	.	3	3		
103	09013-60540		SPRING, DELIVERY	MM501161		.	.	.	3	3		
104	09013-70130		GASKET, DELIVERY	MM501856		.	.	.	3	3		
105	09014-02610		VALVE SUB ASSY	47X01-07700		.	.	.	3	3		
106	09015-05550		ELEMENT SUB ASSY	47X01-05400		.	.	.	3	3		
107	09016-10210		SLEEVE, CONTROL	MM500229		.	.	.	3	3		
108	09016-30082		SEAT, SPRING	MM501098		.	.	.	3	3		
109	09016-40170		SPRING, PLUNGER	MM500360		.	.	.	3	3		A
110	09017-00170		TAPPET SUB ASSY	MM500230		.	.	.	3	3		
111	09021-00470		RACK ASSY, CONTROL	MM501311		.	.	.	1	1		
112	09030-10060		SEAT, SPRING	MM500316		.	.	.	3	3		
113	90802-20150		O-RING	MM500438		.	.	.	3	3		A
114	09018-30050		PIN, TAPPET	MM500231		.	.	.	3	3		
115	09046-70040		PLATE	MM501162		.	.	.	1	1		
116	09006-80020		PLATE, ADJUSTING	MM514109		.	.	.	2	2		
117	94904-80800		BOLT, WASHER HEAD	MM514195		.	.	.	2	2		
118	09024-40180		SCREW, AIR BLEEDER	MM501152		.	.	.	1	1		
119	09024-50210		SCREW, HOLLOW	MM501320		.	.	.	1	1		
120	09022-20080		WASHER, PIPE UNION	MM500114		.	.	.	1	1		
121	*		SHIM	*		.	.	.	AR	AR		
122	09450-36820		PLATE, NAME	47X01-08100		.	.	.	1	1		
123	94903-00030		RIVET, SERRATION	MM500429		.	.	.	2	2		A

63-01

GOVERNOR
(FOR 1, 3)



63-01

GOVERNOR
(FOR 1, 3)

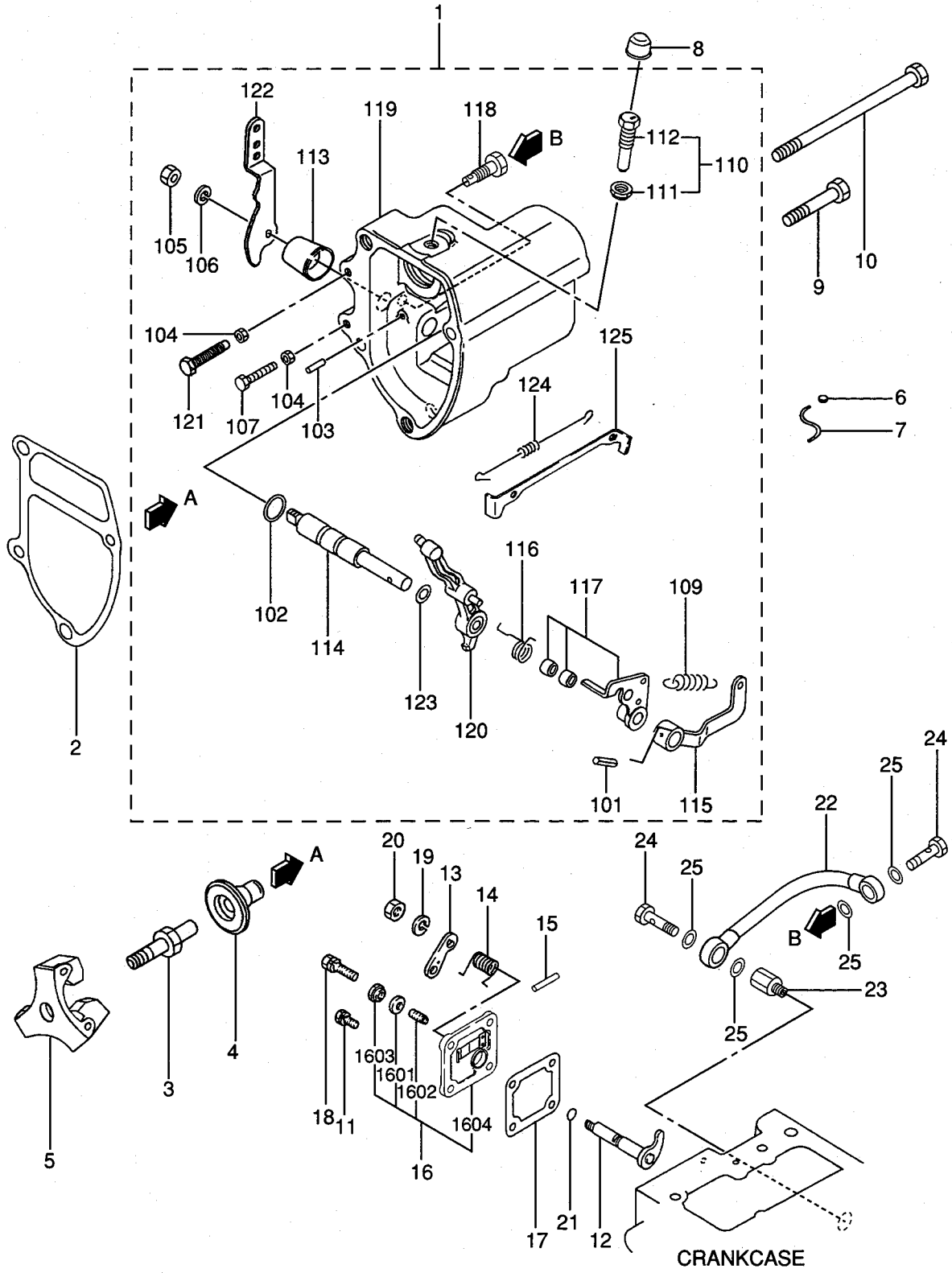
1. S3L-62AG2
2. S3L-62APH2
3. S3L2-62AG2
4. S3L2-62APH
5. S3L2-62APH2

- 43-

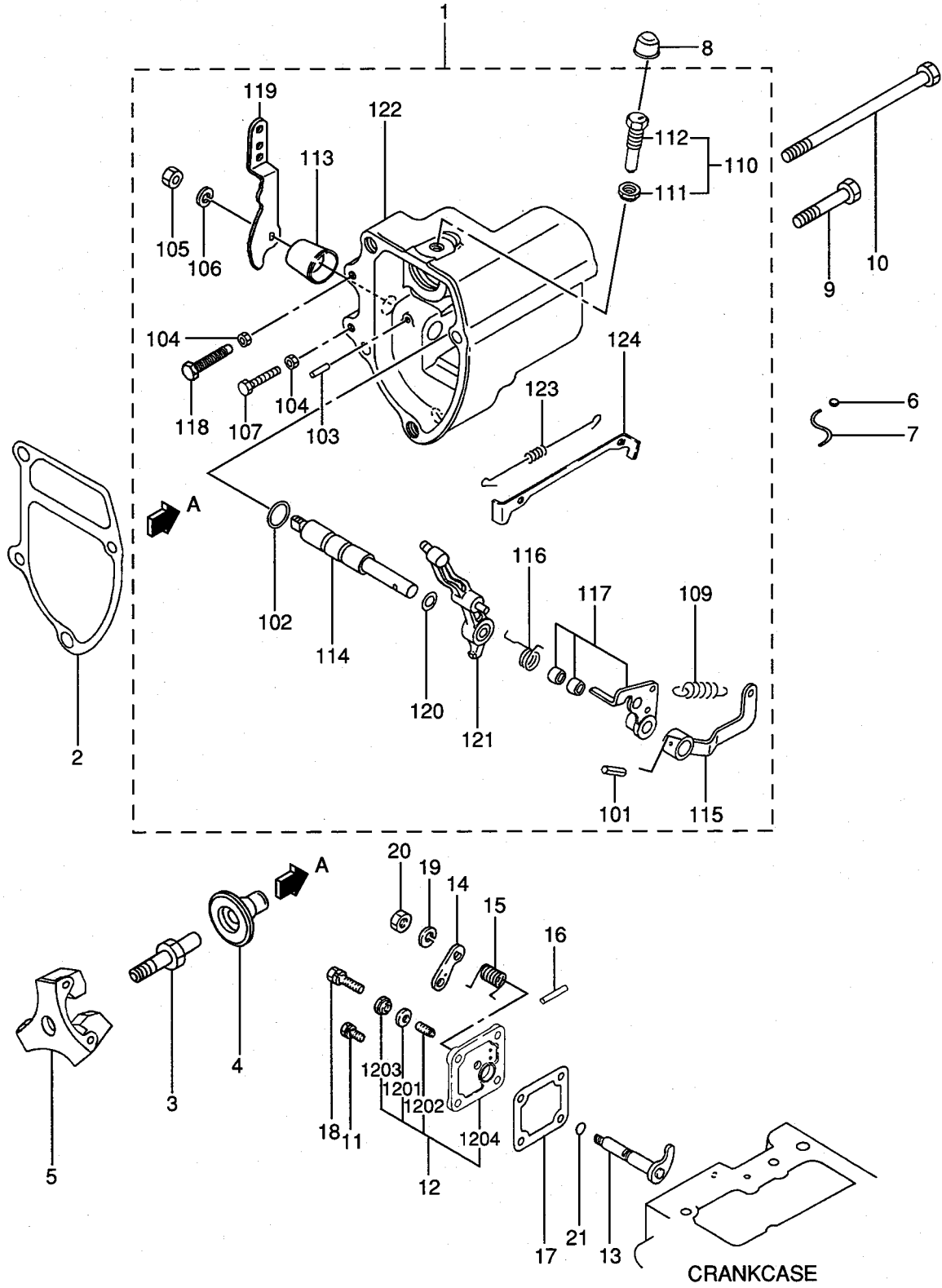
REF. NO.	PART NO.	RISC /EN PQQ	PART NAME & DESCRIPTION	MODEL&QTY					APPLICABLE SERIAL NO.	MV /R
				1	2	3	4	5		
1	31B63-14010		CASE ASSY, GOVERNOR	1	.	1	.	.		
101	F2850-03020		PIN, SPRING	1	.	1	.	.		A
102	F3150-01010		O-RING	1	.	1	.	.		A
103	K8712630		PIN, GROOVED	1	.	1	.	.		
104	MF430004		NUT	2	.	2	.	.		A
105	MF430725		NUT, JAM	1	.	1	.	.		A
106	MF450405		WASHER, SPRING	1	.	1	.	.		A
107	MM331-31701		BOLT, SPEED SET	1	.	1	.	.		
109	MM433720		SPRING, GOVERNOR	1	.	1	.	.		A
110	30L63-00020		SCREW ASSY, RACK SET	1	.	1	.	.		A
111	30L63-00600		NUT, TORQUE SET	1	.	1	.	.		
112	31A63-05601		SCREW, RACK SET	1	.	1	.	.		
113	31A63-01800		COVER, GOVERNOR SHAFT	1	.	1	.	.		
114	31A63-02600		SHAFT, GOVERNOR	1	.	1	.	.		
115	31A63-02700		LEVER, GOV SPRING	1	.	1	.	.		
116	31A63-05300		SPRING, START	1	.	1	.	.		A
117	31A63-01010		LEVER ASSY, TENSION	1	.	1	.	.		
118	31A63-07100		CONNECTOR	1	.	1	.	.		
119	31A63-07200		CASE, GOVERNOR	1	.	1	.	.		
120	31A63-07300		LEVER, GOVERNOR	1	.	1	.	.		
121	31A63-07900		BOLT, LOW IDLE SET	1	.	1	.	.		
122	31A63-11301		LEVER, SPEED CONTROL	1	.	1	.	.		
123	31A63-15200		SHIM, GOVERNOR SHAFT	1	.	1	.	.		
124	31B63-00500		SPRING, TIE-ROD	1	.	1	.	.		
125	31B63-01400		TIE-ROD	1	.	1	.	.		
2	31A63-12201		GASKET, GOVERNOR CASE	1	.	1	.	.		
3	31A63-10305		SHAFT, SLIDING SLEEVE	1	.	1	.	.		
4	31A63-25101		SLEEVE, SLIDING	1	.	1	.	.		
5	31A63-02030		WEIGHT ASSY, GOVERNOR	1	.	1	.	.		
6	MK992-00001		METAL	1	.	1	.	.		
7	MK993-00240		WIRE	1	.	1	.	.		
8	MM433614		CAP, TORQUE SET	1	.	1	.	.		
9	F1035-08045		BOLT	3	.	3	.	.		A
10	31A63-02300		BOLT, GOVERNOR CASE	1	.	1	.	.		
11	F1805-06018		BOLT, W/WASHER	3	.	3	.	.		A
12	31A63-00060		LEVER ASSY, STOP	1	.	1	.	.		
13	MM409686		LEVER, STOP	1	.	1	.	.		
14	MM413362		SPRING, RETURN	1	.	1	.	.		A
15	K8712630		PIN, GROOVED	1	.	1	.	.		
16	31A63-01030		COVER ASSY, TIE ROD	1	.	1	.	.		
1601	MF660031		GASKET	1	.	1	.	.		A
1602	MM409167		SCREW, ADJUSTING	1	.	1	.	.		A
1603	MM409168		NUT	1	.	1	.	.		A
1604	31A63-08800		COVER, TIE ROD	1	.	1	.	.		
17	30A63-00101		GASKET, TIE-ROD COVER	1	.	1	.	.		
18	F1805-06030		BOLT, W/WASHER	1	.	1	.	.		A
19	MF450405		WASHER, SPRING	1	.	1	.	.		A
20	MF430725		NUT, JAM	1	.	1	.	.		A
21	MF520002		O-RING	1	.	1	.	.		A
22	31A63-08100		PIPE, OIL	1	.	1	.	.		

01-01-25

615T02-00



GOVERNOR
(FOR 2, 4, 5)



63-02

GOVERNOR
(FOR 2, 4, 5)1. S3L-62AG2
2. S3L-62APH2
3. S3L2-62AG2
4. S3L2-62APH
5. S3L2-62APH2

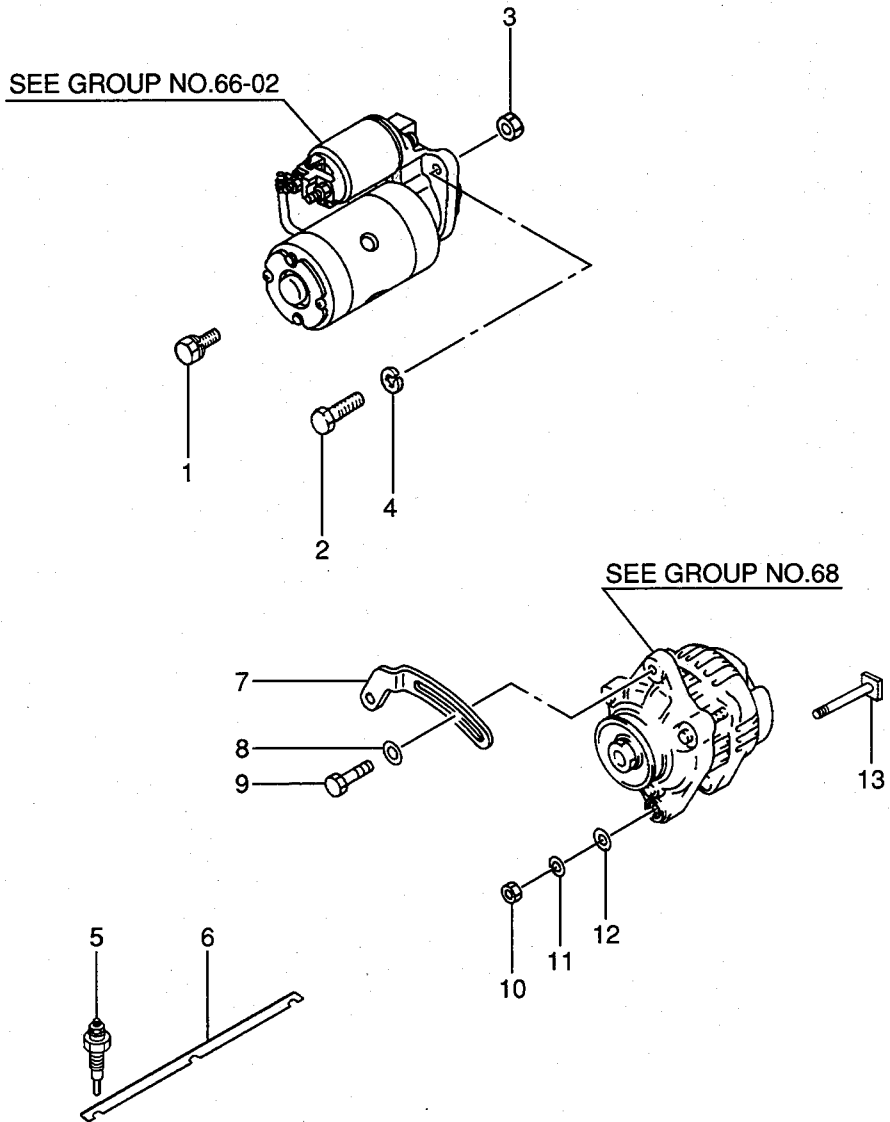
- 47-

REF. NO.	PART NO.	RSC /EN PQG	PART NAME & DESCRIPTION	MODEL & QTY					APPLICABLE SERIAL NO. FROM@--@UPTO	M/V /R ORD
				1	2	3	4	5		
1	31B63-04020		CASE ASSY, GOVERNOR	.	1	.	1	1		
101	F2850-03020		PIN, SPRING	.	1	.	1	1		A
102	F3150-01010		O-RING	.	1	.	1	1		A
103	K8712630		PIN, GROOVED	.	1	.	1	1		
104	MF430004		NUT	.	2	.	2	2		A
105	MF430725		NUT, JAM	.	1	.	1	1		A
106	MF450405		WASHER, SPRING	.	1	.	1	1		A
107	MM331-31701		BOLT, SPEED SET	.	1	.	1	1		
109	MM433675		SPRING, GOVERNOR	.	1	.	1	1		
110	30L63-00020		SCREW ASSY, RACK SET	.	1	.	1	1		A
111	30L63-00600		NUT, TORQUE SET	.	1	.	1	1		
112	31A63-05601		SCREW, RACK SET	.	1	.	1	1		
113	31A63-01800		COVER, GOVERNOR SHAFT	.	1	.	1	1		
114	31A63-02600		SHAFT, GOVERNOR	.	1	.	1	1		
115	31A63-02700		LEVER, GOV SPRING	.	1	.	1	1		
116	31A63-05300		SPRING, START	.	1	.	1	1		A
117	31A63-01010		LEVER ASSY, TENSION	.	1	.	1	1		
118	31A63-07900		BOLT, LOW IDLE SET	.	1	.	1	1		
119	31A63-11301		LEVER, SPEED CONTROL	.	1	.	1	1		
120	31A63-15200		SHIM, GOVERNOR SHAFT	.	1	.	1	1		
121	31A63-15500		LEVER, GOVERNOR	.	1	.	1	1		
122	31A63-22100		CASE, GOVERNOR	.	1	.	1	1		
123	31B63-00500		SPRING, TIE-ROD	.	1	.	1	1		
124	31B63-01400		TIE-ROD	.	1	.	1	1		
2	31A63-12201		GASKET, GOVERNOR CASE	.	1	.	1	1		
3	31A63-10305		SHAFT, SLIDING SLEEVE	.	1	.	1	1		
4	31A63-20201		SLEEVE, SLIDING	.	1	.	1	1		
5	31A63-11061		WEIGHT ASSY, GOVERNOR	.	1	.	1	1		
6	MK992-00001		METAL	.	1	.	1	1		
7	MK993-00240		WIRE	.	1	.	1	1		
8	MM433614		CAP, TORQUE SET	.	1	.	1	1		
9	F1035-08045		BOLT	.	3	.	3	3		A
10	31A63-02300		BOLT, GOVERNOR CASE	.	1	.	1	1		
11	F1805-06018		BOLT, W/WASHER B/W	.	3	.	3	3		A
12	31A63-00020		COVER ASSY, TIE ROD	.	1	.	1	1		
1201	MF660031		GASKET	.	1	.	1	1		A
1202	MM409167		SCREW, ADJUSTING	.	1	.	1	1		A
1203	MM409168		NUT	.	1	.	1	1		A
1204	MM409642		COVER	.	1	.	1	1		
13	31A63-00060		LEVER ASSY, STOP	.	1	.	1	1		
14	MM409686		LEVER, STOP	.	1	.	1	1		
15	MM413362		SPRING, RETURN	.	1	.	1	1		A
16	K8712630		PIN, GROOVED	.	1	.	1	1		
17	30A63-00101		GASKET, TIE-ROD COVER	.	1	.	1	1		
18	F1805-06030		BOLT, W/WASHER B/W	.	1	.	1	1		A
19	MF450405		WASHER, SPRING	.	1	.	1	1		A
20	MF430725		NUT, JAM	.	1	.	1	1		A
21	MF520002		O-RING	.	1	.	1	1		A

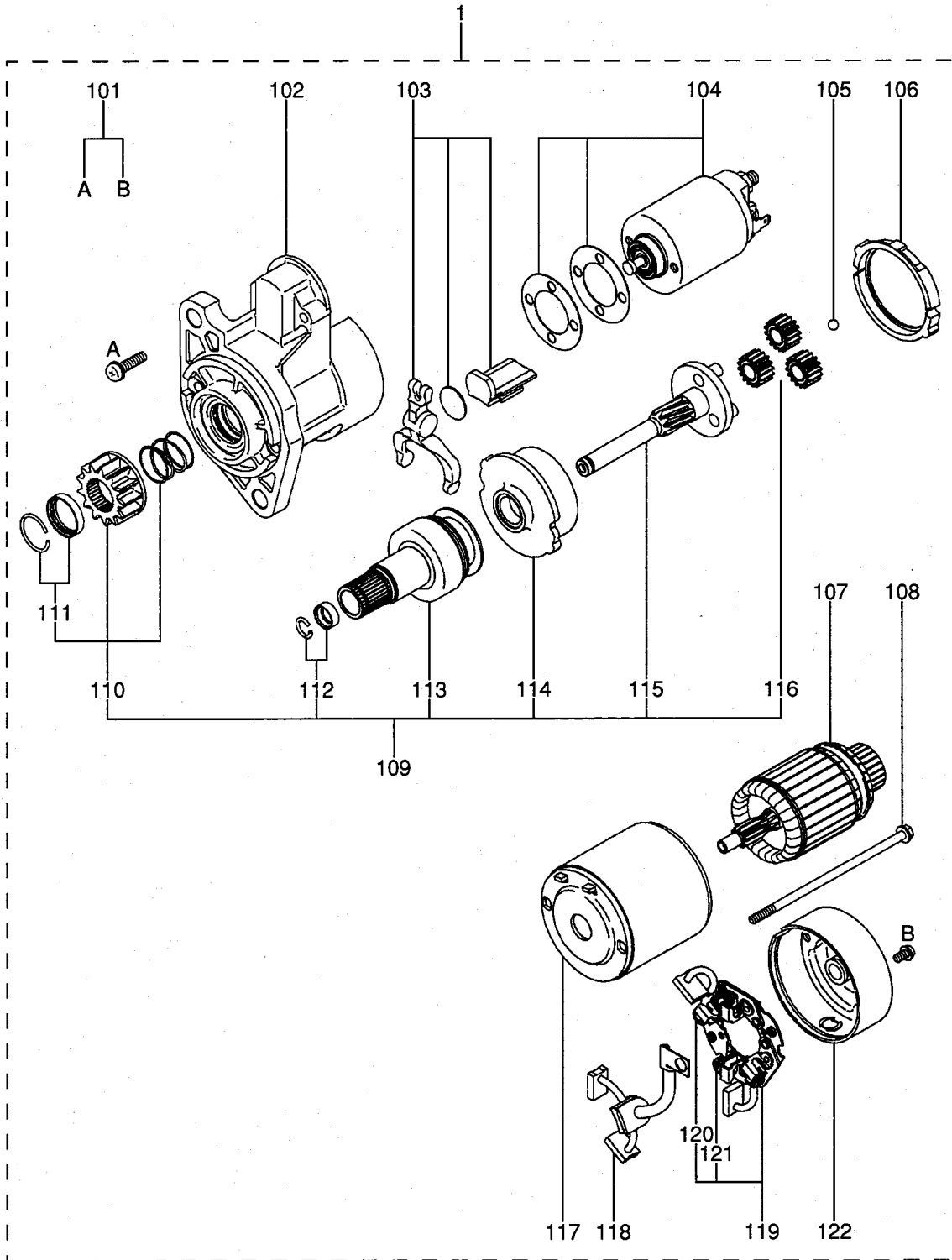
01-01-25

615T02-00

66-01 ELECTRIC PARTS



66-02 STARTER (12V-1.7KW)

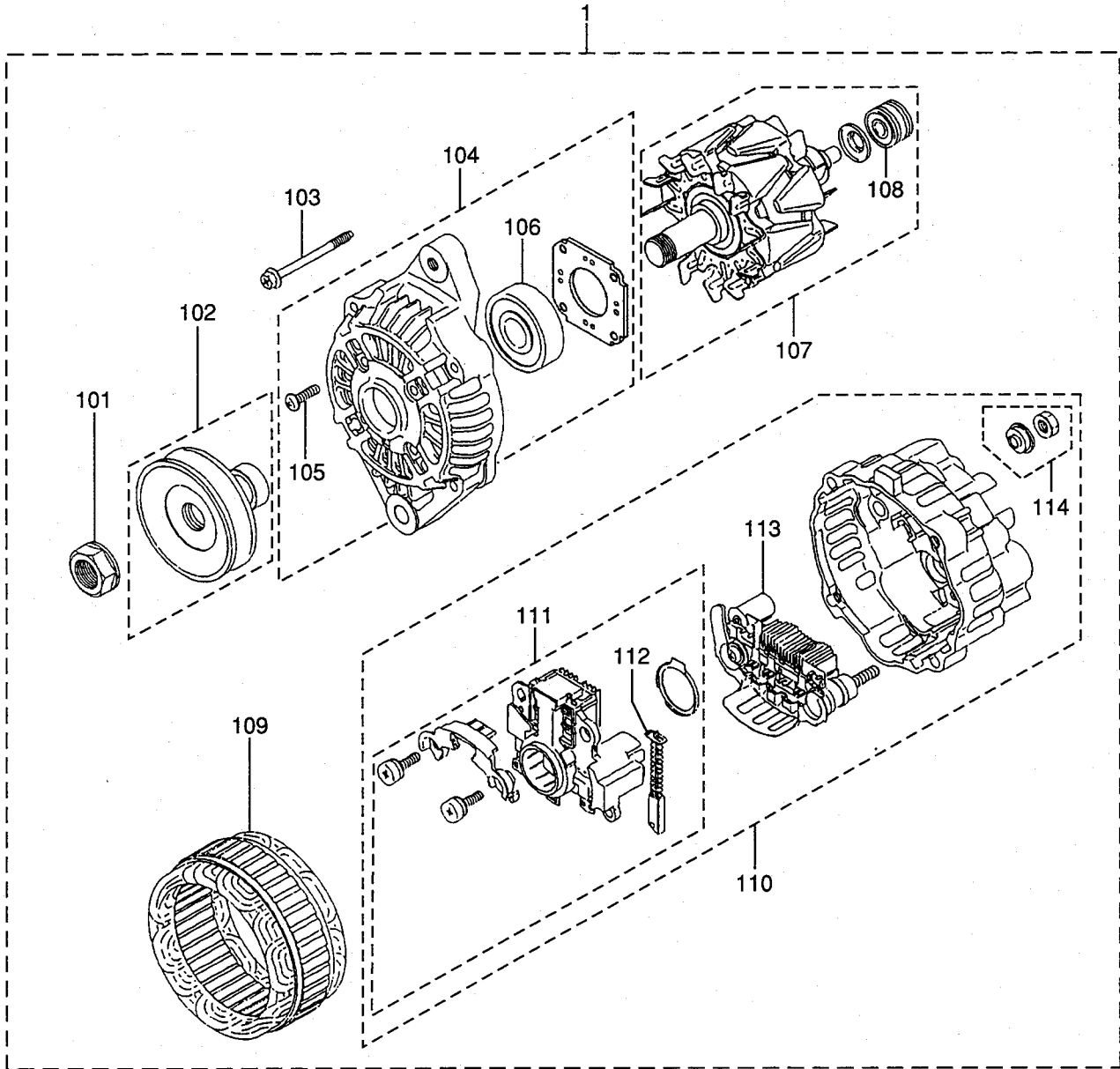


66-02 STARTER (12V-1.7KW)

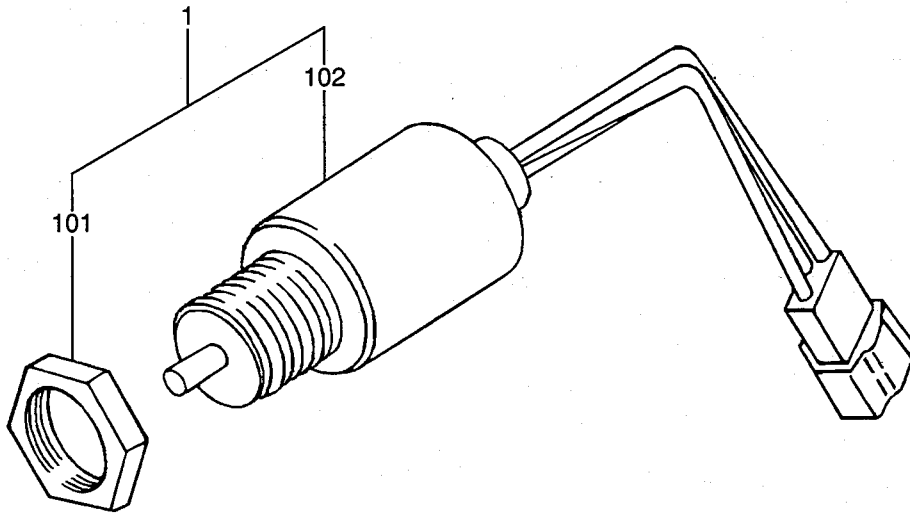
- 1. S3L-62AG2
- 2. S3L-62APH2
- 3. S3L2-62AG2
- 4. S3L2-62APH
- 5. S3L2-62APH2

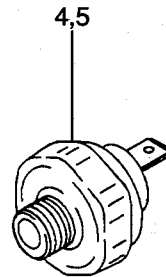
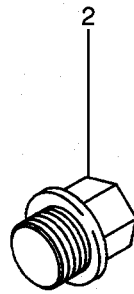
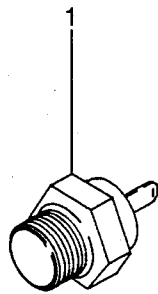
REF. NO.	PART NO.	RSC /EN PQG	PART NAME & DESCRIPTION	MODEL&QTY					APPLICABLE SERIAL NO.	M/R	
				1	2	3	4	5			
1	31B66-00101		STARTER ASSY	M001T68281 MEC	1	1	1	1	1		
101	M414X-00474		SCREW SET	47X11-02237	1	1	1	1	1		
102	M641X-B2371		BRACKET ASSY,FRONT	47X11-02247	1	1	1	1	1		
103	M864X-09771		LEVER SET	47X11-02236	1	1	1	1	1		
104	M371X-71973		SWITCH ASSY	47X11-02319	1	1	1	1	1		
105	S409S-00008		BALL	47X11-02213	1	1	1	1	1		
106	M578X-31771		PACKING	47X11-02320	1	1	1	1	1		
107	M106X-59371		ARMATURE SET	47X11-02239	1	1	1	1	1		
108	M981X-73275		BOLT SET	47X11-02246	1	1	1	1	1		A
109	M357X-92671		SHAFT ASSY,CLUTCH	47X11-02227	1	1	1	1	1		
110	M605X-98571		PINION SET	47X11-02232	1	1	1	1	1		
111	M385X-06171		STOPPER SET	47X11-02233	1	1	1	1	1		
112	M385X-05371		STOPPER SET	47X11-02234	1	1	1	1	1		
113	M191X-17971		OVER RUNNING CLUTCH	47X11-02231	1	1	1	1	1		
114	M135X-03071		GEAR ASSY,INTERNAL	47X11-02290	1	1	1	1	1		
115	M357X-67671		SHAFT ASSY,GEAR	47X11-02228	1	1	1	1	1		
116	M230X-00471		GEAR ASSY	47X11-02207	3	3	3	3	3		
117	M800X-63075		YOKE ASSY	47X11-02321	1	1	1	1	1		
118	M647X-00571		BRUSH ASSY	47X11-02241	2	2	2	2	2		A
119	M649X-01271		HOLDER ASSY,BRUSH	47X11-02242	1	1	1	1	1		
120	M391X-03271		SPRING,BRUSH	47X11-02243	2	2	2	2	2		A
121	M391X-03371		SPRING,BRUSH	47X11-02244	2	2	2	2	2		A
122	M642X-30773		BRACKET ASSY,REAR	47X11-02248	1	1	1	1	1		

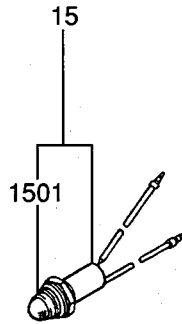
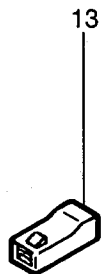
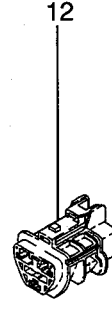
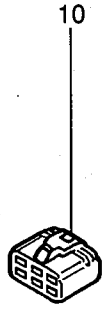
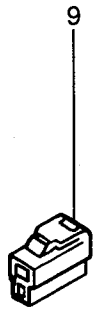
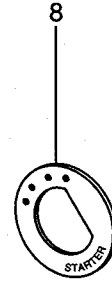
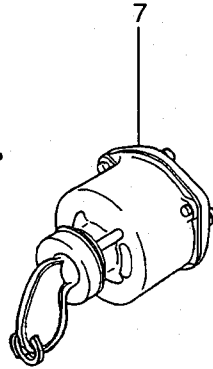
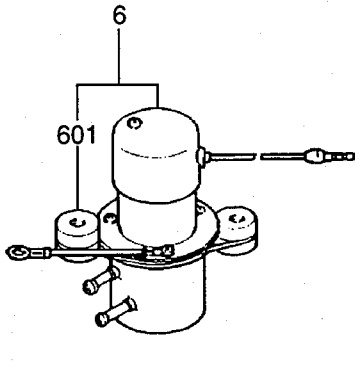
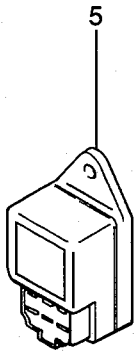
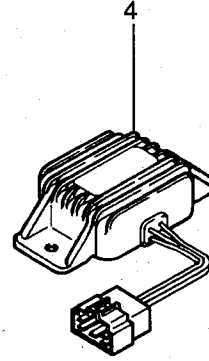
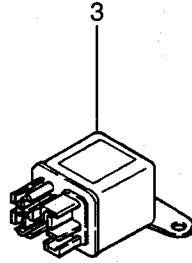
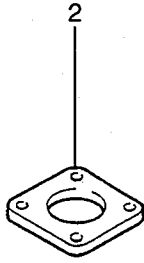
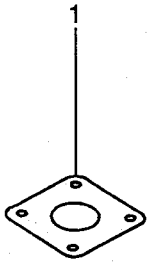
ALTERNATOR (12V-50A)



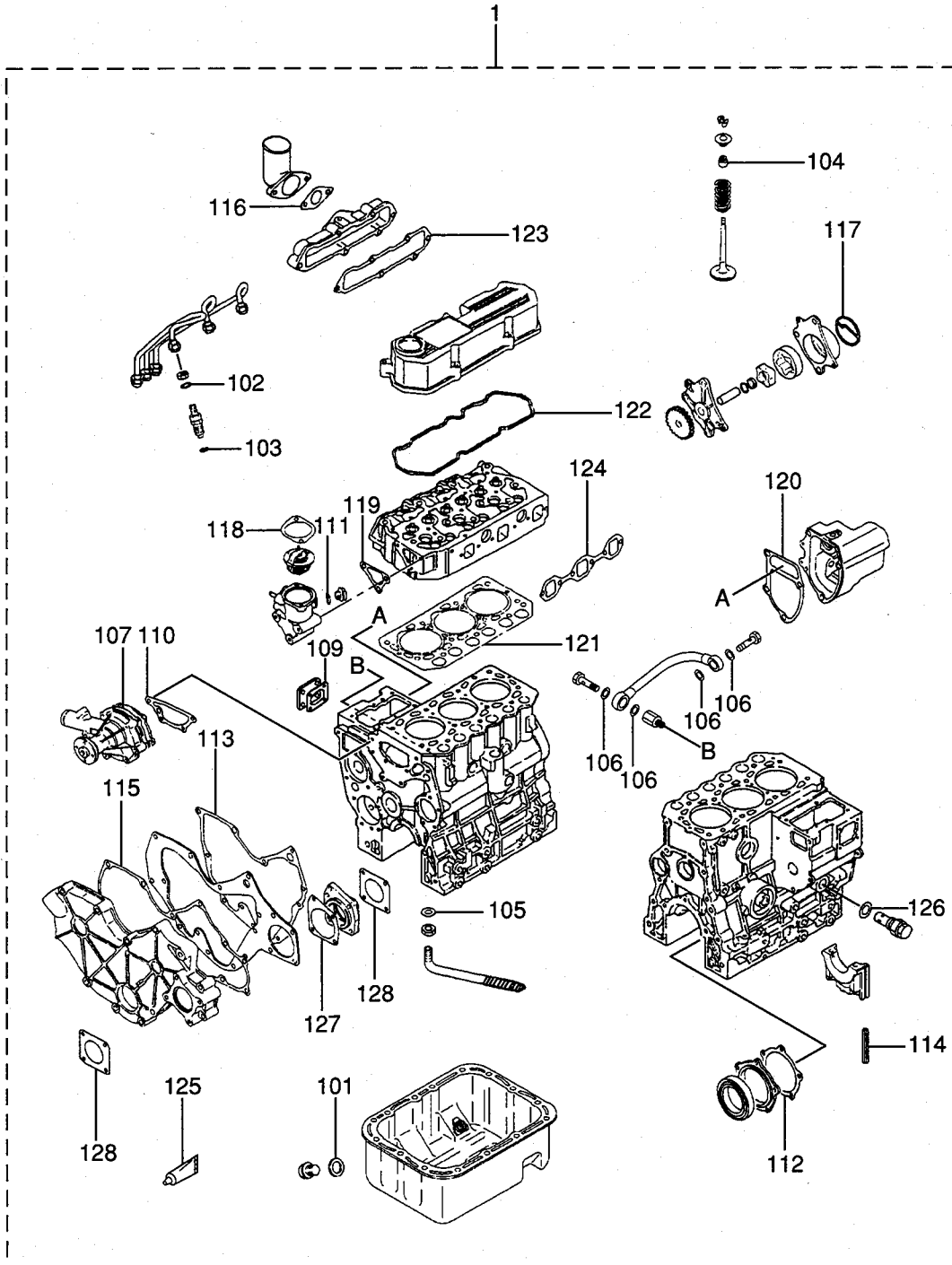
REF. NO.	PART NO.	RSC /EN PQG	PART NAME & DESCRIPTION	MODEL&QTY					APPLICABLE SERIAL NO. FROM@--@UPTORD	MV /R	
				1	2	3	4	5			
1	31A68-00402		ALTERNATOR ASSY	A007T02071C MEC	1	1	1	1	1		
101	A981X-20771		NUT SET	MM502565	1	1	1	1	1		
102	A628T-62170		PULLEY ASSY	MM502578	1	1	1	1	1		
103	A414X-19271		BOLT SET	MM502566	1	1	1	1	1		
104	A640X-67070		BRACKET ASSY,FRONT	47X11-02305	1	1	1	1	1		
105	A414X-21271		SCREW SET	MM502568	1	1	1	1	1		
106	A930X-94570		BEARING,FRONT	47X11-02296	1	1	1	1	1		
107	A880X-83770		ROTOR ASSY	47X11-02311	1	1	1	1	1		
108	S930P-63670		BEARING,REAR	MM502571	1	1	1	1	1		
109	A383X-56570		STATOR ASSY	47X11-02312	1	1	1	1	1		
110	A642X-A9970		BRACKET ASSY,REAR	47X11-02313	1	1	1	1	1		
111	A866X-44682		REGULATOR SET	47X11-02304	1	1	1	1	1		
112	A647X-50170		BRUSH SET	MM502577	2	2	2	2	2		
113	A860T-40670		RECTIFIER ASSY	MM502574	1	1	1	1	1		
114	A529X-07871		NUT SET	MM502575	1	1	1	1	1		







OVERHAUL GASKET KIT
(FOR 1, 3)



94-01

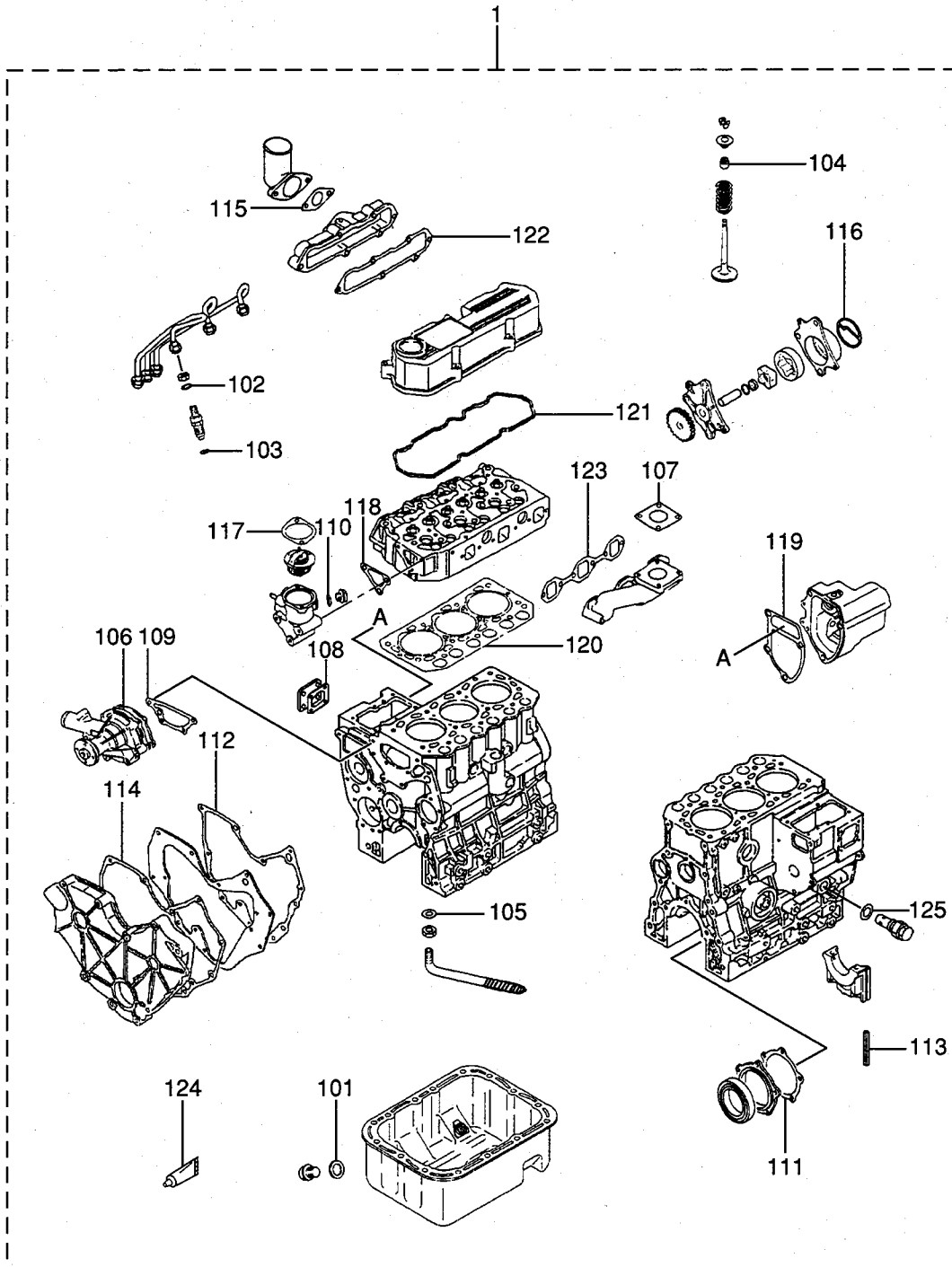
OVERHAUL GASKET KIT
(FOR 1, 3)

- 1. S3L-62AG2
- 2. S3L-62APH2
- 3. S3L2-62AG2
- 4. S3L2-62AFH
- 5. S3L2-62APH2

- 61-

REF. NO.	PART NO.	RSC /EN PQG	PART NAME & DESCRIPTION	MODEL&QTY					APPLICABLE SERIAL NO.	MV /R ORD
				1	2	3	4	5		
1	31B94-02070		GASKET KIT, (O/H)	1	.	1	.	.		
101	MD050317		GASKET, OIL DRAIN	1	.	1	.	.		
102	MD068355		GASKET, FUEL RETURN	3	.	3	.	.		A
103	MD070717		GASKET, HOLDER	3	.	3	.	.		A
104	MD115472		SEAL, VALVE STEM	6	.	6	.	.		A
105	MF660036		GASKET	1	.	1	.	.		A
106	MF660063		GASKET	4	.	4	.	.		A
107	MM409326		GASKET, WATER PUMP	1	.	1	.	.		A
108	F3153-06000		O-RING	1	.	1	.	.		
109	30A63-00101		GASKET, TIE-ROD COVER	1	.	1	.	.		
110	30H45-00101		GASKET, WATER PUMP	1	.	1	.	.		
111	30636-25901		GASKET	3	.	3	.	.		A
112	31A07-11701		GASKET, OIL SEAL CASE	1	.	1	.	.		
113	31A07-11901		GASKET, FRONT PLATE	1	.	1	.	.		
114	31A07-12200		SEAL, SIDE	4	.	4	.	.		
115	31A11-11101		GASKET, GEAR CASE	1	.	1	.	.		
116	31A30-00801		GASKET, INLET PIPE	1	.	1	.	.		
117	31A35-02300		PACKING, BODY	1	.	1	.	.		
118	31A46-01200		GASKET, THERMOSTAT	1	.	1	.	.		
119	31A46-10101		GASKET, THERMO CASE	1	.	1	.	.		
120	31A63-12201		GASKET, GOVERNOR CASE	1	.	1	.	.		
121	31B01-23200		GASKET, CYLINDER HEAD	1	.	1	.	.		A
122	31B04-13201		GASKET, ROCKER COVER	1	.	1	.	.		
123	31B30-00902		GASKET, INLET COVER	1	.	1	.	.		
124	31B32-01200		GASKET, EXHAUST MANF	1	.	1	.	.		
125	32A91-05100		GASKET, LIQUID	1	.	1	.	.		
126	34340-00700		GASKET	1	.	1	.	.		A
127	31A11-05201		GASKET, HOUSHING	1	.	1	.	.		
128	31A11-00101		GASKET, O/PUMP COVER	2	.	2	.	.		
129	32C39-00200		O-RING	1	.	1	.	.		
			NOT SHOWN							

94-02 OVERHAUL GASKET KIT (FOR 2, 5)



94-02

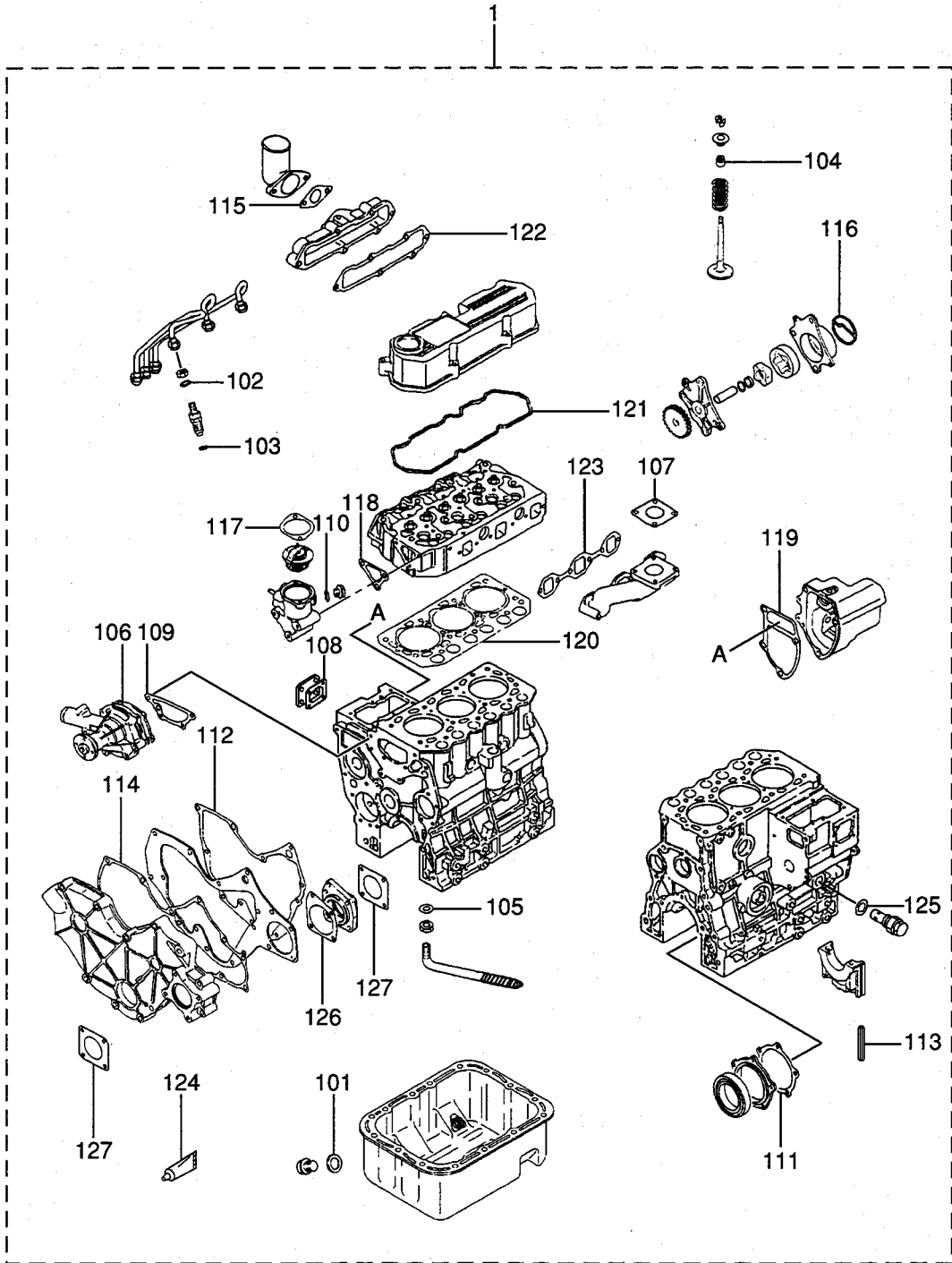
OVERHAUL GASKET KIT
(FOR 2, 5)

- 1. S3L-62AG2
- 2. S3L-62APH2
- 3. S3L2-62AG2
- 4. S3L2-62APH
- 5. S3L2-62APH2

- 63-

REF. NO.	PART NO.	RSC / EN PQQ	PART NAME & DESCRIPTION	MODEL & QTY					APPLICABLE SERIAL NO.	MV / R
				1	2	3	4	5		
1	31B94-02040		GASKET KIT, (O/H)	.	1	.	.	1		
101	MD050317		GASKET, OIL DRAIN	.	1	.	.	1		
102	MD068355		GASKET, FUEL RETURN	.	3	.	.	3		A
103	MD070717		GASKET, HOLDER	.	3	.	.	3		A
104	MD115472		SEAL, VALVE STEM	.	6	.	.	6		A
105	MF660036		GASKET	.	1	.	.	1		A
106	MM409326		GASKET, WATER PUMP	.	1	.	.	1		A
107	30A30-00200		GASKET	.	1	.	.	1		A
108	30A63-00101		GASKET, TIE-ROD COVER	.	1	.	.	1		
109	30H45-00101		GASKET, WATER PUMP	.	1	.	.	1		
110	30636-25901		GASKET	.	3	.	.	3		A
111	31A07-11701		GASKET, OIL SEAL CASE	.	1	.	.	1		
112	31A07-11901		GASKET, FRONT PLATE	.	1	.	.	1		
113	31A07-12200		SEAL, SIDE	.	4	.	.	4		
114	31A11-11200		GASKET, GEAR CASE	.	1	.	.	1		
115	31A30-00801		GASKET, INLET PIPE	.	1	.	.	1		
116	31A35-02300		PACKING, BODY	.	1	.	.	1		
117	31A46-01200		GASKET, THERMOSTAT	.	1	.	.	1		
118	31A46-10101		GASKET, THERMO CASE	.	1	.	.	1		
119	31A63-12201		GASKET, GOVERNOR CASE	.	1	.	.	1		
120	31B01-23200		GASKET, CYLINDER HEAD	.	1	.	.	1		A
121	31B04-13201		GASKET, ROCKER COVER	.	1	.	.	1		
122	31B30-00902		GASKET, INLET COVER	.	1	.	.	1		
123	31B32-01200		GASKET, EXHAUST MANF	.	1	.	.	1		
124	32A91-05100		GASKET, LIQUID	.	1	.	.	1		
125	34340-00700		GASKET	.	1	.	.	1		A

OVERHAUL GASKET KIT
(FOR 4)



94-03

OVERHAUL GASKET KIT
(FOR 4)

- 1. S3L-62AG2
- 2. S3L-62APH2
- 3. S3L2-62AG2
- 4. S3L2-62APH
- 5. S3L2-62APH2

REF. NO.	PART NO.	RSC /EN PQG	PART NAME & DESCRIPTION	MODEL&QTY					APPLICABLE SERIAL NO.	MV /R RD
				1	2	3	4	5		
1	31B94-02060		GASKET KIT, (O/H)	.	.	.	1	.		
101	MD050317		GASKET,OIL DRAIN	.	.	.	1	.		
102	MD068355		GASKET,FUEL RETURN	.	.	.	3	.		
103	MD070717		GASKET,HOLDER	.	.	.	3	.		
104	MD115472		SEAL,VALVE STEM	.	.	.	6	.		
105	MF660036		GASKET	.	.	.	1	.		
106	MM409326		GASKET,WATER PUMP	.	.	.	1	.		
107	30A30-00200		GASKET	.	.	.	1	.		
108	30A63-00101		GASKET,TIE-ROD COVER	.	.	.	1	.		
109	30H45-00101		GASKET,WATER PUMP	.	.	.	1	.		
110	30636-25901		GASKET	.	.	.	3	.		
111	31A07-11701		GASKET,OIL SEAL CASE	.	.	.	1	.		
112	31A07-11901		GASKET,FRONT PLATE	.	.	.	1	.		
113	31A07-12200		SEAL,SIDE	.	.	.	4	.		
114	31A11-11101		GASKET,GEAR CASE	.	.	.	1	.		
115	31A30-00801		GASKET,INLET PIPE	.	.	.	1	.		
116	31A35-02300		PACKING,BODY	.	.	.	1	.		
117	31A46-01200		GASKET,THERMOSTAT	.	.	.	1	.		
118	31A46-10101		GASKET,THERMO CASE	.	.	.	1	.		
119	31A63-12201		GASKET,GOVERNOR CASE	.	.	.	1	.		
120	31B01-23200		GASKET,CYLINDER HEAD	.	.	.	1	.		
121	31B04-13201		GASKET,ROCKER COVER	.	.	.	1	.		
122	31B30-00902		GASKET,INLET COVER	.	.	.	1	.		
123	31B32-01200		GASKET,EXHAUST MANF	.	.	.	1	.		
124	32A91-05100		GASKET,LIQUID	.	.	.	1	.		
125	34340-00700		GASKET	.	.	.	1	.		
126	31A11-05201		GASKET,HOUSING	.	.	.	1	.		
127	30A11-00101		GASKET,O/PUMP COVER	.	.	.	2	.		

NUMERICAL PARTS INDEX

PART NO.	GRP NO.	PAGE	REF. NO.	PART NO.	GRP NO.	PAGE	REF. NO.	PART NO.	GRP NO.	PAGE	REF. NO.
A383X-5657068		53	109	F1805-1205007-02		13	14	MD068355	94-03	65	102
A414X-1927168		53	103	F1825-0602561-01		33	9	MD070717	61-01	33	1
2127168		53	105	0804545		31	3		94-01	61	103
A529X-0787168		53	114	0806045		31	4		94-02	63	103
A628T-6217068		53	102	F2320-0800092		59	14		94-03	65	103
A640X-6707068		53	104	F2325-0800004-01		7	1004	MD115472	04-01	7	8
A642X-A997068		53	110	F2846-0500007-01		11	17		94-01	61	104
A647X-5017068		53	112	F2850-0302063-01		43	101		94-02	63	104
A860T-4067068		53	113		63-02	47	101		94-03	65	104
A866X-4468268		53	111	F3150-0101063-01		43	102	MD703856	04-01	7	12
A880X-8377068		53	107		63-02	47	102	MD712517	23	23	5
A930X-9457068		53	106	F3153-0600094-01		61	108	MD952231	17	21	29
A981X-2077168		53	101	F8000-0800007-01		11	1401	MF140026	66-01	49	9
F1035-0501004-01		7	1001	F8665-0610092		59	10	MF140227	45	31	602
0802007-02		13	4	K8712630	63-01	43	103	MF401936	30	25	10
30		25	11		63-01	43	15	MF430004	63-01	43	104
61-01		33	22		63-02	47	103		63-02	47	104
0802235		27	2		63-02	47	16	MF430005	11-02	17	13
0804511-01		15	6	MB084014	92	59	9	MF430006	66-01	49	3
11-02		17	6	MD000245	01-01	3	201		66-01	49	10
63-01		43	9		01-01	3	401	MF430126	17	21	25
63-02		47	9		01-02	5	201	MF430725	63-01	43	105
0805530		25	12		01-02	5	401		63-01	43	20
0807011-02		17	15	MD000269	07-02	13	5		63-02	47	105
1202507-01		11	20	MD000425	04-01	7	13		63-02	47	20
F1805-0601245		31	13	MD001370	45	31	601	MF430729	36	29	101
61-01		33	30	MD001521	66-01	49	8	MF450006	66-01	49	12
0601863-01		43	11	MD006704	17	21	1401	MF450010	17	21	23
63-02		47	11		17	21	1501	MF450405	11-02	17	16
0602545		31	14	MD008762	11-01	15	7		63-01	43	106
0603045		31	101		11-02	17	7		63-01	43	19
63-01		43	18	MD008784	04-02	9	4		63-02	47	106
63-02		47	18	MD009015	45	31	10		63-02	47	19
0801604-01		7	15	MD016483	04-01	7	7	MF450406	66-01	49	4
04-02		9	8	MD021105	17	21	1402		66-01	49	11
11-01		15	3		17	21	1502	MF450410	17	21	24
11-02		17	3	MD021204	04-01	7	1008	MF472404	07-01	11	12
13		19	2	MD024256	07-01	11	18	MF476018	04-01	7	14
61-01		33	29	MD024812	17	21	2701	MF476215	04-02	9	6
0802030		25	6		17	21	2801		17	21	22
0803011-02		17	12	MD041704	45	31	15	MF520002	63-01	43	21
0803511-02		17	14	MD050316	13	19	101		63-02	47	21
30		25	5	MD050317	13	19	102	MF522010	04-01	7	1002
0804004-02		9	3		94-01	61	101	MF650102	63-01	45	24
0806530		25	7		94-02	63	101	MF660031	63-01	43	1601
45		31	8		94-03	65	101		63-02	47	1201
1002001-01		3	9	MD068353	61-01	33	3	MF660036	36	29	2
01-02		5	9	MD068355	61-01	33	2		94-01	61	105
1002566-01		49	1		94-01	61	102		94-02	63	105
1202807-02		13	15		94-02	63	102		94-03	65	105

NUMERICAL PARTS INDEX

PART NO.	GRP NO.	PAGE	REF. NO.	PART NO.	GRP NO.	PAGE	REF. NO.	PART NO.	GRP NO.	PAGE	REF. NO.
MF660063	63-01	45	25	MM409326	94-03	65	106	M135X-03071	66-02	51	114
	94-01	61	106	MM409327	45	31	109	M191X-17971	66-02	51	113
MF665511	07-01	11	11	MM409427	66-01	49	2	M230X-00471	66-02	51	116
MF665532	07-01	11	5	MM409642	63-02	47	1204	M357X-67671	66-02	51	115
MF665533	07-01	11	6	MM409645	07-01	11	13	92671	66-02	51	109
MF665537	07-01	11	19	MM409660	92	59	11	M371X-71973	66-02	51	104
MF665538	01-01	3	202	MM409671	87	55	101	M385X-05371	66-02	51	112
	01-01	3	402	MM409686	63-01	43	13	06171	66-02	51	111
	01-02	5	202		63-02	47	14	M391X-03271	66-02	51	120
	01-02	5	402	MM413196	45	31	9	03371	66-02	51	121
MK661-12000	61-01	33	23	MM413362	63-01	43	14	M414X-00474	66-02	51	101
MK992-00001	63-01	43	6		63-02	47	15	M578X-31771	66-02	51	106
	63-02	47	6	MM430131	61-01	33	1001	M605X-98571	66-02	51	110
MK993-00240	63-01	43	7	MM430613	07-01	11	4	M641X-B2371	66-02	51	102
	63-02	47	7	MM430614	61-01	33	8	M642X-30773	66-02	51	122
MM130767	92	59	4	MM430703	61-01	33	7	M647X-00571	66-02	51	118
MM201106	92	59	1501	MM431-28201	92	59	3	M649X-01271	66-02	51	119
MM201122	92	59	15	53801	07-02	13	11	M800X-63075	66-02	51	117
MM304916	61-01	33	25	MM431762	92	59	5	M864X-09771	66-02	51	103
MM316248	90	57	2	MM432104	90	57	1	M981X-73275	66-02	51	108
MM331-31701	63-01	43	107	MM433306	04-01	7	6	S409S-00008	66-02	51	105
	63-02	47	107	MM433614	63-01	43	8	S930P-63670	68	53	108
MM400380	04-02	9	11		63-02	47	8	04826-22000	07-01	11	301
MM400880	61-01	33	28	MM433675	63-02	47	109	23500	07-01	11	302
MM401205	11-02	17	10	MM433720	63-01	43	109	05534-16000	07-02	13	16
MM402737	04-02	9	9	MM433921	17	21	7	09006-80020	61-03-01	37	116
MM405-43001	45	31	11	MM433922	17	21	8		61-03-02	39	116
MM407366	92	59	2	MM433923	17	21	9		61-03-03	41	116
MM408245	07-02	13	13	MM434493	45	31	12	09011-05110	61-03-01	37	101
MM408470	01-01	3	8	MM435190	61-01	33	26		61-03-02	39	101
	01-02	5	8	MM435-94101	61-02	35	1		61-03-03	41	101
MM409040	61-01	33	13	MM437305	17	21	16	09013-10520	61-03-01	37	102
MM409041	61-01	33	14	MM437880	07-02	13	6		61-03-02	39	102
MM409042	61-01	33	15	MM437881	07-02	13	7		61-03-03	41	102
MM409043	61-01	33	16	MM437882	07-02	13	8	60540	61-03-01	37	103
MM409044	61-01	33	17	MM437883	07-02	13	9		61-03-02	39	103
MM409045	61-01	33	18	MS471104	07-01	11	8		61-03-03	41	103
MM409046	61-01	33	19	MS471105	07-01	11	9	70130	61-03-01	37	104
MM409047	61-01	33	20	MS471110	07-01	11	10		61-03-02	39	104
MM409048	61-01	33	21	MS602039	61-01	33	3101		61-03-03	41	104
MM409167	63-01	43	1602	MS603014	45	31	901	09014-02610	61-03-01	37	105
	63-02	47	1202	MS604043	61-01	33	1002		61-03-02	39	105
MM409168	63-01	43	1603	MS660163	61-01	33	3102		61-03-03	41	105
	63-02	47	1203	MS660164	45	31	902	09015-05550	61-03-01	37	106
MM409302	45	31	1	MS660169	61-01	33	1003		61-03-02	39	106
MM409-31301	45	31	603	MS661140	01-01	3	5		61-03-03	41	106
MM409314	45	31	102		01-02	5	5	09016-10210	61-03-01	37	107
MM409326	45	31	108		07-01	11	7		61-03-02	39	107
	94-01	61	107	MS800516	92	59	13		61-03-03	41	107
	94-02	63	106	M106X-59371	66-02	51	107	30082	61-03-01	37	108

NUMERICAL PARTS INDEX

PART NO.	GRP NO.	PAGE	REF. NO.	PART NO.	GRP NO.	PAGE	REF. NO.	PART NO.	GRP NO.	PAGE	REF. NO.
09016-30082	61-03-02	39	108	30A19-0002017		21	18	31A04-0090004-01		7	3
	61-03-03	41	108	0003017		21	19	0130104-01		7	5
40170	61-03-01	37	109	30A30-0020092		59	1	1102404-01		7	1003
	61-03-02	39	109		94-02	63	107	3410004-01		7	1010
	61-03-03	41	109		94-03	65	107	3430004-01		7	1011
09017-00170	61-03-01	37	110	30A40-0010336		29	5	31A05-0130004-02		9	10
	61-03-02	39	110	30A60-0020092		59	6	31A07-0080107-01		11	303
	61-03-03	41	110	0050092		59	601	0230007-02		13	3
09018-30050	61-03-01	37	114	30A61-0490061-01		33	31	0310007-01		11	304
	61-03-02	39	114	30A63-0010163-01		43	17	0440107-02		13	12
	61-03-03	41	114		63-02	47	17	1160107-02		13	1
09021-00470	61-03-01	37	111		94-01	61	109	1170107-02		13	2
	61-03-02	39	111		94-02	63	108	94-01		61	112
	61-03-03	41	111		94-03	65	108	94-02		63	111
09022-20080	61-03-03	41	120	30A87-0060092		59	12	94-03		65	111
09024-40180	61-03-01	37	118	1004187		55	1	1190111-01		15	2
	61-03-02	39	118	2040187		55	102	11-02		17	2
	61-03-03	41	118	30H45-0010145		31	2	94-01		61	113
50210	61-03-01	37	119		94-01	61	110	94-02		63	112
	61-03-02	39	119		94-02	63	109	94-03		65	112
	61-03-03	41	119		94-03	65	109	1220007-01		11	15
09030-10060	61-03-01	37	112	30L07-0070007-01		11	16	94-01		61	114
	61-03-02	39	112	30L63-0002063-01		43	110	94-02		63	113
	61-03-03	41	112		63-02	47	110	94-03		65	113
09046-70040	61-03-01	37	115	0060063-01		43	111	31A11-0010194-01		61	128
	61-03-02	39	115		63-02	47	111	0050011-01		15	4
	61-03-03	41	115	30405-3140204-02		9	7	0080211-02		17	4
09311-03840	61-02	35	101	30636-2590190		57	3	0210011-02		17	1
09312-10380	61-02	35	104		94-01	61	111	0220011-01		15	1
70310	61-02	35	103		94-02	63	110	0510111-02		17	8
09316-41351	61-02	35	107		94-03	65	110	0520111-02		17	9
09317-40070	61-02	35	105	30890-0520092		59	7	94-01		61	127
51810	61-02	35	102	31A01-0160001-02		5	206	94-03		65	126
51830	61-02	35	102	0250001-01		3	205	1110111-02		17	5
51850	61-02	35	102	01-01		3	405	94-01		61	115
51870	61-02	35	102	01-02		5	205	94-03		65	114
51890	61-02	35	102	01-02		5	405	1120011-01		15	5
51910	61-02	35	102	0260001-01		3	206	94-02		63	114
51930	61-02	35	102	01-01		3	406	31A17-0001017		21	10
51950	61-02	35	102	01-02		5	406	0002017		21	11
51970	61-02	35	102	1110001-01		3	6	0003017		21	12
51990	61-02	35	102	01-02		5	6	0710017		21	4
09340-05060	61-02	35	106	31A03-0110101-01		3	207	0720017		21	5
09450-36820	61-03-03	41	122	0140001-01		3	407	0730017		21	6
37240	61-03-01	37	122	0150001-02		5	207	1060217		21	13
37470	61-03-02	39	122	0190001-02		5	407	1110017		21	1
30A11-0010111-02		17	11	31A04-0040004-01		7	2	1120017		21	2
	94-03	65	127	0050004-01		7	4	1130017		21	3
30A12-0110107-02		13	10	0070004-01		7	9	31A23-0005107-01		11	14
30A19-0001017		21	17	0080004-01		7	1	0102323		23	3

NUMERICAL PARTS INDEX

PART NO.	GRP NO.	PAGE	REF. NO.	PART NO.	GRP NO.	PAGE	REF. NO.	PART NO.	GRP NO.	PAGE	REF. NO.
31A23-0130217		21	30	31A63-0690063-01		45	23	31B19-1002417		21	14
0140423		23	1	0710063-01		43	118	31B20-0010017		21	20
0150223		23	4	0720063-01		43	119	0020017		21	21
1010123		23	2	0730063-01		43	120	0240017		21	26
31A30-0030030		25	3	0790063-01		43	121	31B21-0009017		21	27
0080130		25	4	63-02		47	118	0108017		21	28
94-01		61	116	0810063-01		43	22	31B30-0090230		25	2
94-02		63	115	0880063-01		43	1604	94-01		61	123
94-03		65	115	1030563-01		43	3	94-02		63	122
31A35-0230035		27	101	63-02		47	3	94-03		65	122
94-01		61	117	1106163-02		47	5	1001030		25	1
94-02		63	116	1130163-01		43	122	31B32-0010030		25	8
94-03		65	116	63-02		47	119	0120030		25	9
0504036		29	1	1220163-01		43	2	94-01		61	124
3001035		27	1	63-02		47	2	94-02		63	123
31A42-0030036		29	6	94-01		61	120	94-03		65	123
31A45-2070045		31	5	94-02		63	119	31B61-0260061-01		33	11
31A46-0006245		31	604	94-03		65	119	0280061-01		33	12
0106045		31	6	1520063-01		43	123	0350061-01		33	10
0120045		31	607	63-02		47	120	31B62-0110061-01		33	27
94-01		61	118	1550063-02		47	121	31B63-0050063-01		43	124
94-02		63	117	2020163-02		47	4	63-02		47	123
94-03		65	117	2210063-02		47	122	0140063-01		43	125
1010145		31	7	2510163-01		43	4	63-02		47	124
94-01		61	119	31A68-0040268		53	1	0402063-02		47	1
94-02		63	118	0210066-01		49	7	1401063-01		43	1
94-03		65	118	2030066-01		49	13	31B65-0010061-01		33	24
31A61-0150061-01		33	1004	31A90-0030090		57	4	0120004-01		7	11
0410061-01		33	4	1030090		57	5	0203061-03-03		41	1
0420061-01		33	5	31B01-1107001-01		3	3	0303061-03-01		37	1
0430061-01		33	6	1301001-02		5	3	0402061-03-02		39	1
31A63-0002063-02		47	12	2320001-01		3	7	31B66-0010166-02		51	1
0006063-01		43	12	01-02		5	7	0410066-01		49	6
63-02		47	13	94-01		61	121	31B94-0204094-02		63	1
0101063-01		43	117	94-02		63	120	0206094-03		65	1
63-02		47	117	94-03		65	120	0207094-01		61	1
0103063-01		43	16	3102001-01		3	1	32A04-0240104-01		7	1006
0180063-01		43	113	3104001-02		5	1	32A36-0501236		29	3
63-02		47	113	31B04-0001404-01		7	10	32A66-0310066-01		49	5
0203063-01		43	5	0101004-01		7	1007	32A91-0510094-01		61	125
0230063-01		43	10	0301004-02		9	1	94-02		63	124
63-02		47	10	1320104-02		9	2	94-03		65	124
0260063-01		43	114	94-01		61	122	32C04-0450004-01		7	1012
63-02		47	114	94-02		63	121	0610004-01		7	1013
0270063-01		43	115	94-03		65	121	32C39-0020094-01		61	129
63-02		47	115	31B05-0010104-02		9	5	34340-0070036		29	4
0530063-01		43	116	31B07-1301107-01		11	2	94-01		61	126
63-02		47	116	3201107-01		11	1	94-02		63	125
0560163-01		43	112	31B13-0001313		19	1	94-03		65	125
63-02		47	112	31B19-0102317		21	15	34490-0150092		59	8

NUMERICAL PARTS INDEX

PART NO.	GRP NO.	PAGE	REF. NO.	PART NO.	GRP NO.	PAGE	REF. NO.	PART NO.	GRP NO.	PAGE	REF. NO.
90802-20150	61-03-01	37	113								
	61-03-02	39	113								
	61-03-03	41	113								
94901-81020	61-03-01	37	120								
	61-03-02	39	120								
94903-00030	61-03-01	37	123								
	61-03-02	39	123								
	61-03-03	41	123								
94904-80800	61-03-01	37	117								
	61-03-02	39	117								
	61-03-03	41	117								

TABLE OF BOLT,W/WASHER

BOLT,W/WASHER	BOLT/WASHER	BOLT,W/WASHER	BOLT/WASHER	BOLT,W/WASHER	BOLT/WASHER
F1805-06010	F1035-06010 F2515-06000	F1805-06035	F1035-06035 F2515-06000	F1805-08018	F1035-08018 F2515-08000
F1805-06012	F1035-06012 F2515-06000	F1805-06040	F1035-06040 F2515-06000	F1805-08020	F1035-08020 F2515-08000
F1805-06014	F1035-06014 F2515-06000	F1805-06045	F1035-06045 F2515-06000	F1805-08022	F1035-08022 F2515-08000
F1805-06016	F1035-06016 F2515-06000	F1805-06055	F1035-06055 F2515-06000	F1805-08025	F1035-08025 F2515-08000
F1805-06018	F1035-06018 F2515-06000	F1805-06060	F1035-06060 F2515-06000	F1805-08030	F1035-08030 F2515-08000
F1805-06020	F1035-06020 F2515-06000	F1805-08012	F1035-08012 F2515-08000	F1805-08035	F1035-08035 F2515-08000
F1805-06025	F1035-06025 F2515-06000	F1805-08014	F1035-08014 F2515-08000	F1805-08040	F1035-08040 F2515-08000
F1805-06030	F1035-06030 F2515-06000	F1805-08016	F1035-08016 F2515-08000	F1805-08045	F1035-08045 F2515-08000

TABLE OF BOLT,W/WASHER

BOLT,W/WASHER	BOLT/WASHER	BOLT,W/WASHER	BOLT/WASHER	BOLT,W/WASHER	BOLT/WASHER
F1805-08050	F1035-08050 F2515-08000	F1805-10018	F1035-10018 F2515-10000	F1805-10050	F1035-10050 F2515-10000
F1805-08055	F1035-08055 F2515-08000	F1805-10020	F1035-10020 F2515-10000	F1805-10055	F1035-10055 F2515-10000
F1805-08060	F1035-08060 F2515-08000	F1805-10022	F1035-10022 F2515-10000	F1805-10060	F1035-10060 F2515-10000
F1805-08065	F1035-08065 F2515-08000	F1805-10025	F1035-10025 F2515-10000	F1805-10065	F1035-10065 F2515-10000
F1805-08070	F1035-08070 F2515-08000	F1805-10030	F1035-10030 F2515-10000	F1805-10070	F1035-10070 F2515-10000
F1805-08075	F1035-08075 F2515-08000	F1805-10035	F1035-10035 F2515-10000	F1805-10085	F1035-10085 F2515-10000
F1805-10014	F1035-10014 F2515-10000	F1805-10040	F1035-10040 F2515-10000	F1805-12016	F1035-12016 F2515-12000
F1805-10016	F1035-10016 F2515-10000	F1805-10045	F1035-10045 F2515-10000	F1805-12020	F1035-12020 F2515-12000

TABLE OF BOLT,W/WASHER

BOLT,W/WASHER	BOLT/WASHER	BOLT,W/WASHER	BOLT/WASHER	BOLT,W/WASHER	BOLT/WASHER
F1805-12025	F1035-12025 F2515-12000	F1805-12065	F1035-12065 F2515-12000	F1825-06010	F1035-06010 F2515-06000 F2500-06000
F1805-12030	F1035-12030 F2515-12000	F1805-12085	F1035-12085 F2515-12000	F1825-06012	F1035-06012 F2515-06000 F2500-06000
F1805-12035	F1035-12035 F2515-12000	F1805-14035	F1035-14035 F2515-14000	F1825-06014	F1035-06014 F2515-06000 F2500-06000
F1805-12040	F1035-12040 F2515-12000	F1805-14045	F1035-14045 F2515-14000	F1825-06016	F1035-06016 F2515-06000 F2500-06000
F1805-12045	F1035-12045 F2515-12000			F1825-06020	F1035-06020 F2515-06000 F2500-06000
F1805-12050	F1035-12050 F2515-12000			F1825-06025	F1035-06025 F2515-06000 F2500-06000
F1805-12055	F1035-12055 F2515-12000				
F1805-12060	F1035-12060 F2515-12000				

TABLE OF BOLT,W/WASHER

BOLT,W/WASHER	BOLT/WASHER	BOLT,W/WASHER	BOLT/WASHER	BOLT,W/WASHER	BOLT/WASHER
F1825-06030	F1035-06030 F2515-06000 F2500-06000	F1825-08025	F1035-08025 F2515-08000 F2500-08000	F1825-08050	F1035-08050 F2515-08000 F2500-08000
F1825-06035	F1035-06035 F2515-06000 F2500-06000	F1825-08030	F1035-08030 F2515-08000 F2500-08000	F1825-08055	F1035-08055 F2515-08000 F2500-08000
F1825-06055	F1035-06055 F2515-06000 F2500-06000	F1825-08035	F1035-08035 F2515-08000 F2500-08000	F1825-08085	F1035-08085 F2515-08000 F2500-08000
F1825-08012	F1035-08012 F2515-08000 F2500-08000	F1825-08038	F1035-08038 F2515-08000 F2500-08000	F1825-10014	F1035-10014 F2515-10000 F2500-10000
F1825-08016	F1035-08016 F2515-08000 F2500-08000	F1825-08040	F1035-08040 F2515-08000 F2500-08000	F1825-10016	F1035-10016 F2515-10000 F2500-10000
F1825-08020	F1035-08020 F2515-08000 F2500-08000	F1825-08045	F1035-08045 F2515-08000 F2500-08000	F1825-10020	F1035-10020 F2515-10000 F2500-10000

TABLE OF BOLT,W/WASHER

BOLT,W/WASHER	BOLT/WASHER	BOLT,W/WASHER	BOLT/WASHER	BOLT,W/WASHER	BOLT/WASHER
F1825-10025	F1035-10025 F2515-10000 F2500-10000	F1825-12025	F1035-12025 F2515-12000 F2500-12000	F2005-10016	F1155-10016 F2515-10000
F1825-10030	F1035-10030 F2515-10000 F2500-10000	F1825-12030	F1035-12030 F2515-12000 F2500-12000	F2005-10020	F1155-10020 F2515-10000
F1825-10035	F1035-10035 F2515-10000 F2500-10000	F1825-12040	F1035-12040 F2515-12000 F2500-12000	F2005-10025	F1155-10025 F2515-10000
F1825-10040	F1035-10040 F2515-10000 F2500-10000			F2005-10030	F1155-10030 F2515-10000
F1825-10080	F1035-10080 F2515-10000 F2500-10000			F2005-10035	F1155-10035 F2515-10000
F1825-12020	F1035-12020 F2515-12000 F2500-12000			F2005-10040	F1155-10040 F2515-10000
				F2005-10045	F1155-10045 F2515-10000
				F2005-10050	F1155-10050 F2515-10000

TABLE OF BOLT,W/WASHER

BOLT,W/WASHER	BOLT/WASHER	BOLT,W/WASHER	BOLT/WASHER	BOLT,W/WASHER	BOLT/WASHER
F2005-10055	F1155-10055 F2515-10000	F2005-12040	F1155-12040 F2515-12000	F2015-10020	F1155-10020 F2515-10000 F2500-10000
F2005-10060	F1155-10060 F2515-10000	F2005-12045	F1155-12045 F2515-12000	F2015-10025	F1155-10025 F2515-10000 F2500-10000
F2005-10065	F1155-10065 F2515-10000	F2005-12050	F1155-12050 F2515-12000	F2015-10030	F1155-10030 F2515-10000 F2500-10000
F2005-10070	F1155-10070 F2515-10000	F2005-12055	F1155-12055 F2515-12000	F2015-10035	F1155-10035 F2515-10000 F2500-10000
F2005-12020	F1155-12020 F2515-12000	F2005-12065	F1155-12065 F2515-12000	F2015-10040	F1155-10040 F2515-10000 F2500-10000
F2005-12025	F1155-12025 F2515-12000			F2015-10050	F1155-10050 F2515-10000 F2500-10000
F2005-12030	F1155-12030 F2515-12000				
F2005-12035	F1155-12035 F2515-12000				

TABLE OF BOLT,W/WASHER

BOLT,W/WASHER	BOLT/WASHER	BOLT,W/WASHER	BOLT/WASHER	BOLT,W/WASHER	BOLT/WASHER
F2015-10055	F1155-10055 F2515-10000 F2500-10000				
F2015-10060	F1155-10060 F2515-10000 F2500-10000				
F2015-12025	F1155-12025 F2515-12000 F2500-12000				
F2015-12030	F1155-12030 F2515-12000 F2500-12000				

