

MITSUBISHI GENUINE PARTS

"MITSUBISHI GENUINE PARTS" should be used exclusively for servicing your Mitsubishi engine.

"MITSUBISHI GENUINE PARTS" are superior and reliable because they have been produced under the excellent quality-control system, and have passed the strict inspections.

Imitation parts are not reliable from the viewpoints of their material and manufacturing method which are entirely incomparable with those of genuine parts.

A large assortment of "MITSUBISHI GENUINE PARTS" is always available at any of our authorized dealers, so do your ordering at your nearest dealer by specifying "MITSUBISHI GENUINE PARTS".

GUIDE FOR USE OF PARTS CATALOGUE

1. This Parts Catalogue contains service parts for the following Mitsubishi S4L,S4L2 diesel engine.
The applicable engine type and serial number are as below:

ENGINE NAME	MODEL	USE · SPECIFICATION	APPLICABLE SERIAL NO.
S4L	62AG2	For Generator	52135 -UP
	62APH	For Power unit	52139 -UP
	62APH2	For Power unit	52138 -UP
S4L2	62AG2	For Generator	52054 -UP
	62APH2	For Power unit	51953 -UP

2. When ordering parts, give the Mitsubishi dealer or distributor the following information:
- (1) Part number (or assembly number) and part name.
 - (2) Quantity required
 - (3) Model and serial number

NOTE: In some cases a substitute part is furnished instead of the part ordered.

3. Indication of assembled bolts with washer

Of the standard bolts, those with washers are identified by the symbol "B/W" in the Description column of each list. (Part Name:BOLT, W/WASHER)

For the part numbers of the bolts and washers and those of bolts with washers, refer to the listing (beginning with the page D1) at the end of this parts catalogue. These bolts and washers should be ordered individually.

4. Indication of combination for replaceability —"G"—

The new part to be used in combination with the other part in place of an old part is identified by the symbol "G" in the interchangeability code column of each list.

For the parts to be combined, refer to the listing (beginning with E1) at the end of this parts catalogue.

5. For the numerical index, refer to the page beginning with C1 at the end of this parts catalogue.

6. Some illustration may have some difference from the real part shape when the illustration shows a representation of various parts.

7. The parts and part numbers are subject to change without prior notice.

SAMPLE OF PARTS CATALOGUE

GROUP NAME
GROUP NUMBER → 01-01 **CRANKCASE**

Applicable to serial NO. shown on cover and up if blank.

Model type

REF. NO.	PART NO.	R/P	S/E	C/N	PARTNAME&DESCRIPTION	MODEL&QTY		APPLICABLE SERIAL NO.		M/R	V/R	D		
						31NCA		FORM@-	-@UPTO					
1	MM4 09741	R	1	C	RETAINER	1								
	MM4 34729				RETAINER	1			11001-					
2	MM4 30181				BLOCK SUB ASSY	1								
2:01	MF 665538				CAP,SEARING	2								
2:02	MF 665543				CAP,SEARING	2								
2:03	MM4 36217				BOLT,BEARING CAP	8								
2:04	*				CAP ASSY	1								
2:09	MM4 8176				BUSHING	1								
3	MD 000268	1	1	C	PIN,DOWEL	2								
	MM4 09645				PIN,DOWEL	2								
4	MF 240051				BOLT,W/WASHER	3			12051@	@12050				

Part not to be supplied See (3)

See (8) - a Description codes.

See (6) Change codes.

See (5) Sequence-of-change numbers.

See (4) Interchangerability code.

See (2) Reference number.

Quantity per unit

Applicable from serial No. indicated.

Applicable from 12051 (Scheduled) if suffixed with @ and sometimes differs from real serial No.

Applicable up to serial No. indicated.

High-demand part. See (11)

Part newly changed or added. See (12)

Applicable up to 12051 (Scheduled) if prefixed with @ and sometimes differs from real serial No.

NOTE : Some of model designations, number of variations and serial numbers, indicated above, are quoted from other parts catalogues.
Read these items of information as those for this parts catalogue.

NOTE : For the description of each item, refer to the pages which follow.

(4) Interchangeability codes

The interchangeability codes used in this parts catalogue are as follows :

PART NO.	Code (R/P)	DESCRIPTION
A (Old) B (New)	R	B (new part) and A (old part) are mutually interchangeable
A (Old) B (New)	1	A (old part) is not supplied. B (new part) can be substituted for A (old part) .
A (Old) B (New)	3	B (new part) can be substituted for A (old part) . [A (old part) cannot be substituted for B (new part) .]
A (Old) B (New)	N	B (new part) and A (old part) are not interchangeable.
A (Old) B (New)	G	B (new part) can be substituted for A (old part) in combination with other part (s) . (For the parts to be combined, refer to the listing beginning with the page E1 at the end of this parts catalogue.)

(5) Sequence of change numbers

The parts are changed for improved quality or performance. Their changes are indicated in sequence by numerals (1. 2. 3 ...) .

Blank : Original

1 : 1st change

2 : 2nd change

3 : 3rd change

(6) Change codes

These codes indicate the reason or purpose of changes of the parts.

A : Added part (a part entered into service)

C : Change of part number

D : Deleted part (a part applicable upto the serial no. expressed in Serial No. column)

E : Added part except above reasons

Q : Change of quantity

(9) Model & quantity

- (a) Model** : Model, type, specification, destination, etc. of product to which a parts catalogue applies are indicated in the title column of each variation.
- (b) Quantity** : Quantity of part or assembly and its component parts required for one unit of product is indicated.

NOTE : In case "AR" appears in QTY column, it is required to adjust quantity for use.

(10) Applicable serial numbers

Applicable serial numbers of engine are indicated in the "UPTO" or "FROM" column. Serial numbers with "@" are scheduled ones and sometimes differ from the real serial numbers. If the "FROM" column is blank, the part is applicable to serial number shown on this cover and up.

(11) Management rank

Parts ranked as "A" are high-demand parts. This ranking is to be referred to by dealers, and is devised to facilitate and rationalize their distribution, stocking and inventory of the parts.

(12) Parts changed or added after the last parts list that has been published are identified by "V."

TABLE OF SYMBOLS & ABBREVIATIONS

SYMBOL	DESCRIPTION
ACCEL	ACCELERATOR
ADJ	ADJUSTING (ADJUSTABLE)
AIR-CON	AIR-CONDITIONER
ASSY	ASSEMBLY
ATT	ATTACHMENT
AUTO	AUTOMATIC
AUX	AUXILIARY
AR	AS REQUIRED
B/H	BACKHOE
BATT	BATTERY
BRG	BEARING
B/PMP	BILGE PUMP
BRKT	BRACKET
BUSH	BUSHING
CARB	CARBURETOR
C/L	CENTERLINE
COMPR	COMPRESSOR
CON-ROD	CONNECTING-ROD
C/MBR	CROSS-MEMBER
CYL	CYLINDER
DIA	DIAMETER
DIFF	DIFFERENTIAL
DISTR	DISTRIBUTOR
DR	DRIVE
D=	OUT DIAMETER

SYMBOL	DESCRIPTION
ELEC	ELECTRIC
ENG	ENGINE
EQUIP	EQUIPMENT
EXH	EXHAUST
E/TNK	EXPANSION TANK
FITT	FITTING
FLEX	FLEXIBLE
FR	FRONT
GSKT	GASKET
GEN	GENERATOR
GOV	GOVERNOR
G/N	GROUP NUMBER
H/EXCH	HEAT EXCHANGER
HEX	HEXAGON
HYD	HYDRAULIC
H=	HEIGHT
IND	INDUSTRIAL
INJ	INJECTION
INSTAL	INSTALLATION
INST	INSTRUMENT
INTLK	INTERLOCK
JUNC	JUNCTION
KD	KNOCKDOWN
L.H	LEFT HAND
LUB	LUBRICATION
L=	LENGTH

SYMBOL	DESCRIPTION
MANF	MANIFOLD
MAX	MAXIMUM
M.L.H	MAXIMUM LIFTING HEIGHT
MIN	MINIMUM
MTR	MOTOR
MTG	MOUNTING
NO.	NUMBER
OPT	OPTION
O/D	OVER DRIVE
O.S	OVERSIZE
PTO	POWER TAKE-OFF
P/S	POWER STEERING
PRESS	PRESSURE
P/N	PART NUMBER
QTY	QUANTITY
RAD	RADIATOR
RE	REAR
REG	REGULATOR
REV	REVERSE
R.H	RIGHT HAND
REF.NO.	REFERENCE NUMBER
R/N	REFERENCE NUMBER
S/PMP	SEA WATER PUMP
SECT	SECTION
S/MBR	SIDEMEMBER

TABLE OF SYMBOLS & ABBREVIATIONS

SYMBOL	DESCRIPTION	SYMBOL	DESCRIPTION	SYMBOL	DESCRIPTION
STD	STANDARD	1ST	FIRST		
SUPT	SUPPORT	2ND	SECOND		
SYM	SYMBOL	3RD	THIRD		
SYNCH	SYNCHRONIZER	4TH	FOURTH		
SYS	SYSTEM	5TH	FIFTH		
TEMP	TEMPERATURE	&	AND		
TERM	TERMINAL	@	UNCONFIRMED		
T/CONV	TORQUE-CONVERTER	*	PART NOT TO BE SUPPLIED		
T/F	TRANSFER				
T/M	TRANSMISSION				
T/HSG	TURBINE-HOUSING				
T/C	TURBOCHARGER				
T=	THICKNESS				
U/BODY	UNDERBODY				
U.S	UNDERSIZE				
UNIV	UNIVERSAL				
VAC	VACUUM				
VENT	VENTILATOR				
W/STRIP	WEATHERSTRIP				
W/	WITH				
W/O	WITHOUT				
W/W	WOODWARD				
W/PMP	WATER PUMP				
W=	WIDTH				
Z=	NUMBER OF GEAR TEETH				

TABLE OF MAKER'S NAME

BAS or ZXL	Bosch Automotive System Corp. (OLD:Zexel Corp.)	NKC	Nikko Electric Industry Co.,Ltd.
DEN or NDC	DENSO Corp. (OLD:Nippon denso Co.,Ltd.)	MEC	Mitsubishi Electric Corp.
NCC	Niigata Converter Co., Ltd.	SEC	Sawafuji Electric Co.,Ltd.
		MPC	Mikuni Precision Co.,Ltd.

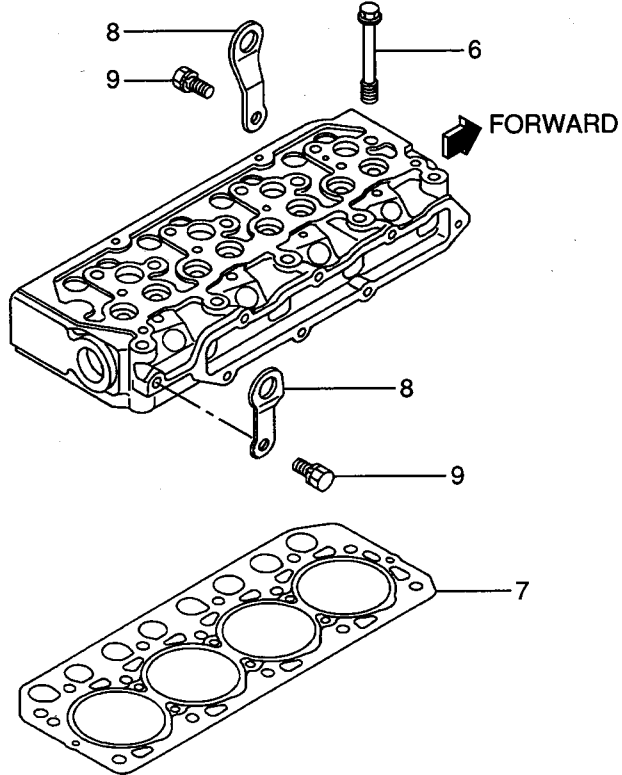
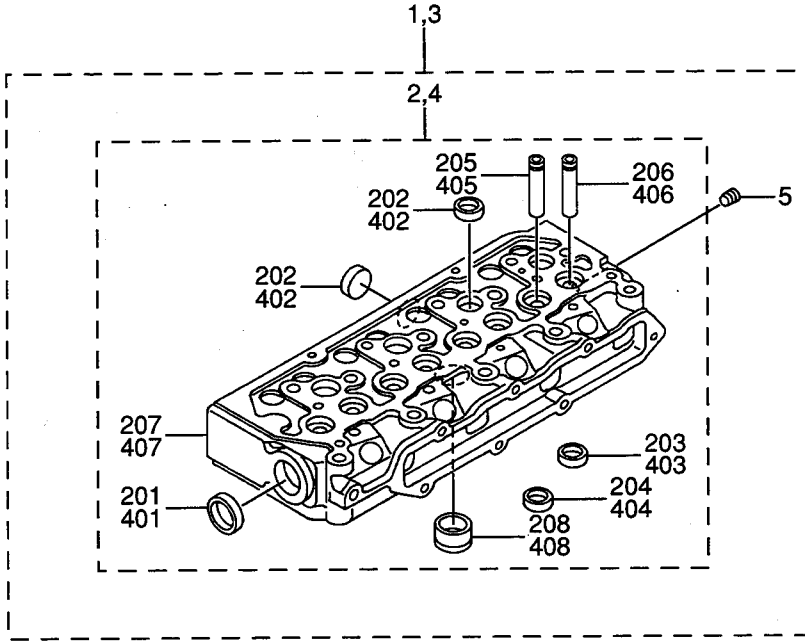
C O N T E N T S

GROUP NO.	GROUP NAME	PAGE
ENGINE BODY		
01-01	CYLINDER HEAD (FOR 1,2,3).....	2
01-02	CYLINDER HEAD (FOR 4,5).....	4
04-01	VALVE MECHANISM.....	6
04-02	ROCKER COVER & CAMSHAFT.....	8
07-01	CRANKCASE ASSY.....	10
07-02	CRANKCASE.....	12
11-01	TIMING GEAR CASE (FOR 3,5).....	14
11-02	TIMING GEAR CASE (FOR 1,2,4).....	16
13-01	OIL PAN (FOR 1,4).....	18
13-02	OIL PAN (FOR 2,3,5).....	20
17	MAIN MOVING PARTS.....	22
23	TIMING GEAR.....	24
INLET & EXHAUST SYSTEM		
30	INLET & EXHAUST MANIFOLD.....	26
OIL PUMP		
35	OIL PUMP.....	28
36	OIL SYSTEM.....	30
COOLING SYSTEM		
45	COOLING SYSTEM.....	32

GROUP NO.	GROUP NAME	PAGE
FUEL SYSTEM		
61-01	FUEL SYSTEM.....	34
61-02	NOZZLE & NOZZLE HOLDER.....	36
61-03-01	INJECTION PUMP (FOR 1,4).....	38
61-03-02	INJECTION PUMP (FOR 2,3).....	40
61-03-03	INJECTION PUMP (FOR 5).....	42
GOVERNOR SYSTEM		
63-01	GOVERNOR (FOR 1,4).....	44
63-02	GOVERNOR (FOR 2,3,5).....	48
ELECTRIC PARTS		
66-01	ELECTRIC PARTS.....	50
66-02	STARTER (12V-2.0KW).....	52
68	ALTERNATOR (12V-50A).....	54
CONTROL SYSTEM		
87	CONTROL SYSTEM.....	56
INSTRUMENT PARTS		
90	INSTRUMENT.....	58
ACCESSORY		
92	ACCESSORY.....	60
REPAIR PARTS		

GROUP NO.	GROUP NAME	PAGE
94-01	OVERHAUL GASKET KIT (FOR 1,4).....	62
94-02	OVERHAUL GASKET KIT (FOR 2).....	64
94-03	OVERHAUL GASKET KIT (FOR 3,5).....	66
	NUMERICAL PARTS INDEX.....	C1
	TABLE OF BOLT,W/WASHER.....	D1

01-01 CYLINDER HEAD
(FOR 1, 2, 3)

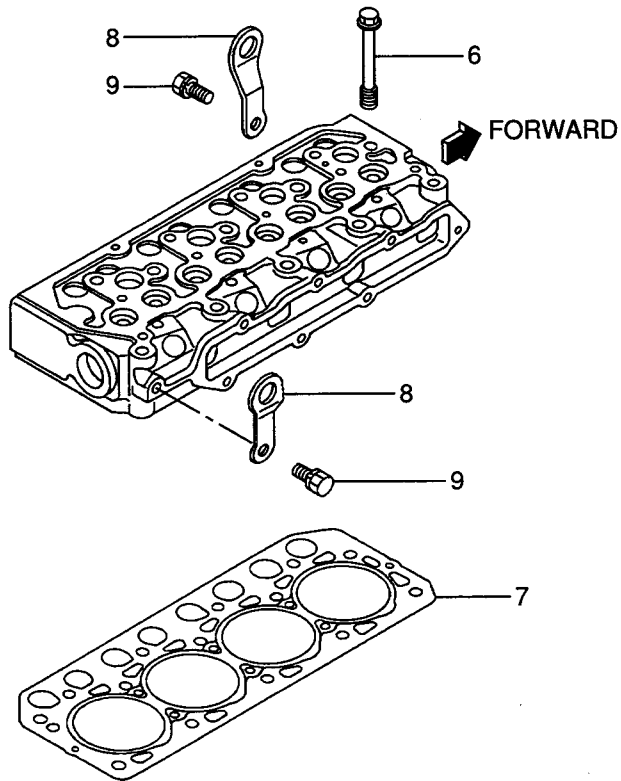
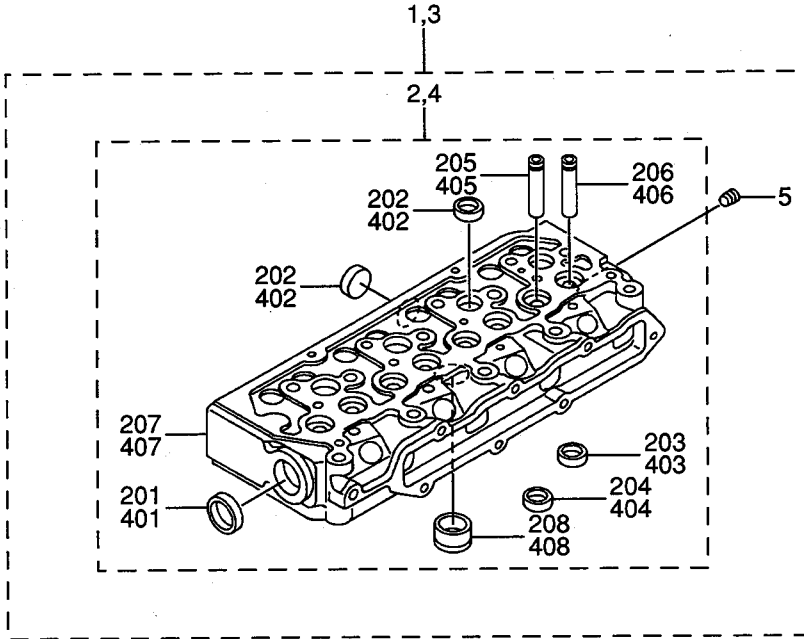


01-01 CYLINDER HEAD
(FOR 1, 2, 3)

- 1. S4L-62AG2
- 2. S4L-62APH
- 3. S4L-62APH2
- 4. S4L2-62AG2
- 5. S4L2-62APH2

REF. NO.	PART NO.	RSC /EN PQG	PART NAME & DESCRIPTION	MODEL&QTY					APPLICABLE SERIAL NO.	M/V /R ORD
				1	2	3	4	5		
1	31A01-21060		HEAD ASSY,CYLINDER	1		
2	*		HEAD SUB ASSY,CYL	1		
201	MD000245		CAP,SEALING	1		
202	MF665538		CAP,SEALING	7		
203	*		SEAT,INLET VALVE	4		
204	*		SEAT,EXHAUST VALVE	4		
205	31A01-02500		GUIDE,EXHAUST VALVE	4		
206	31A01-02600		GUIDE,INLET VALVE	4		
207	*		CYLINDER HEAD	1		
208	31A03-01101		JET,COMBUSTION	4		
3	31A01-31050		HEAD ASSY,CYLINDER	.	1	1	.	.		
4	*		HEAD SUB ASSY,CYL	.	1	1	.	.		
401	MD000245		CAP,SEALING	.	1	1	.	.		
402	04826-22500		CAP,SEALING	.	7	7	.	.		
403	*		SEAT,INLET VALVE	.	4	4	.	.		
404	*		SEAT,EXHAUST VALVE	.	4	4	.	.		
405	31A01-02500		GUIDE,EXHAUST VALVE	.	4	4	.	.		
406	31A01-02600		GUIDE,INLET VALVE	.	4	4	.	.		
407	*		CYLINDER HEAD	.	1	1	.	.		
408	31A03-01400		JET,COMBUSTION	.	4	4	.	.		
5	MS661140		PLUG,TAPER	1	1	1	.	.		A
6	31A01-11100		BOLT,CYLINDER HEAD	14	14	14	.	.		
7	31A01-33300		GASKET,CYLINDER HEAD	1	1	1	.	.		A
8	MM408470		HANGER,ENGINE	2	2	2	.	.		
9	F1805-10020		BOLT,W/WASHER B/W	2	2	2	.	.		A

01-02 CYLINDER HEAD
(FOR 4, 5)

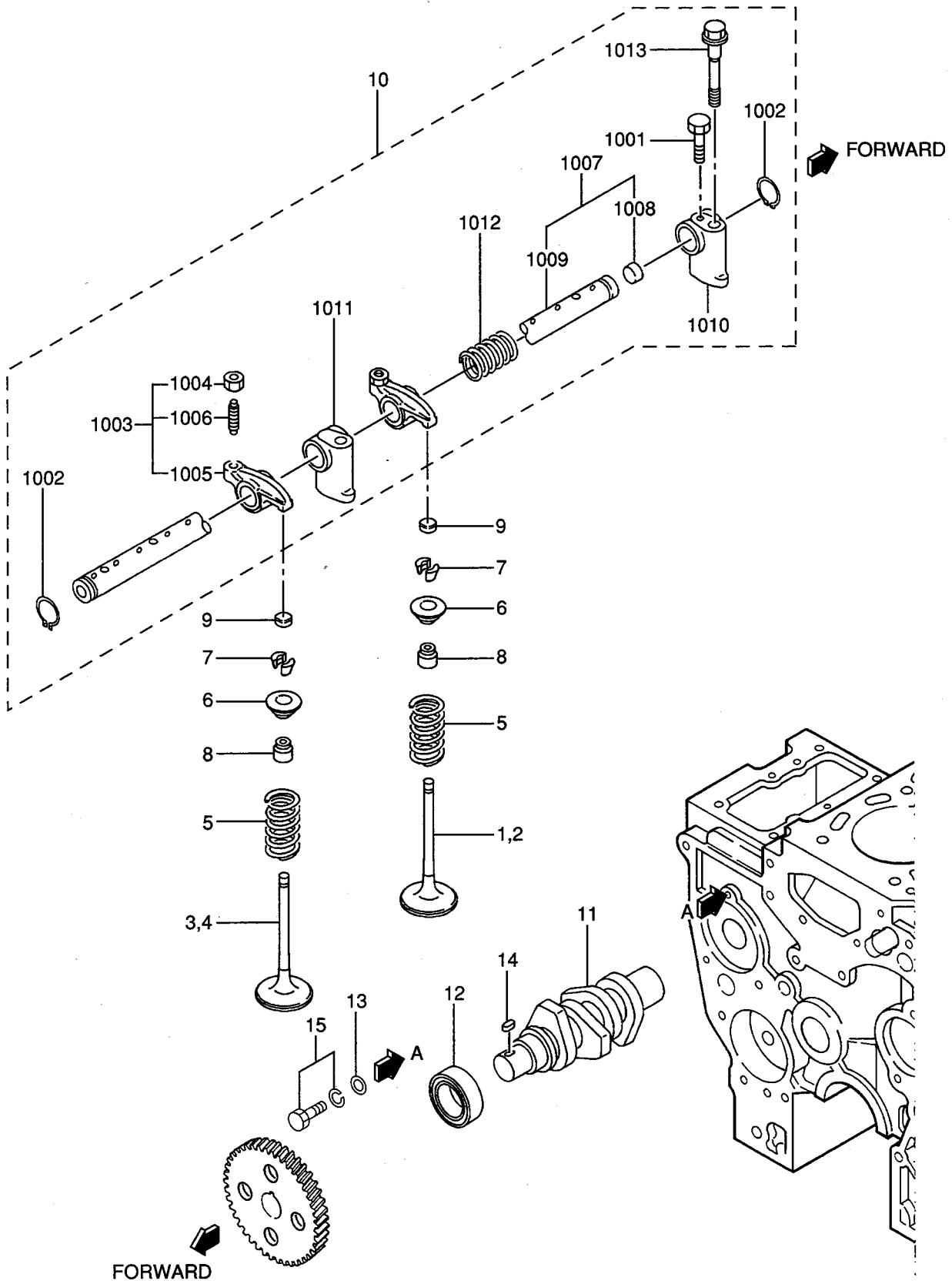


01-02 CYLINDER HEAD
(FOR 4, 5)

- 1. S4L-62AG2
- 2. S4L-62APH
- 3. S4L-62APH2
- 4. S4L2-62AG2
- 5. S4L2-62APH2

REF. NO.	PART NO.	RSC /EN PQG	PART NAME & DESCRIPTION	MODEL&QTY					APPLICABLE SERIAL NO. FROM@--@UPTORD	MV /R
				1	2	3	4	5		
1	31A01-51040		HEAD ASSY,CYLINDER				1			
2	*		HEAD SUB ASSY,CYL				1			
201	MD000245		CAP,SEALING				1			
202	MF665538		CAP,SEALING				7			
203	*		SEAT,INLET VALVE				4			
204	*		SEAT,EXHAUST VALVE				4			
205	31A01-02500		GUIDE,EXHAUST VALVE				4			
206	31A01-02600		GUIDE,INLET VALVE				4			
207	*		CYLINDER HEAD				1			
208	31A03-01500		JET,COMBUSTION				4			
3	31A01-13010		HEAD ASSY,CYLINDER					1		
4	*		HEAD SUB ASSY,CYL					1		
401	MD000245		CAP,SEALING					1		
402	MF665538		CAP,SEALING					7		
403	*		SEAT,INLET VALVE					4		
404	*		SEAT,EXHAUST VALVE					4		
405	31A01-02500		GUIDE,EXHAUST VALVE					4		
406	31A01-02600		GUIDE,INLET VALVE					4		
407	*		CYLINDER HEAD					1		
408	31A03-01900		JET,COMBUSTION					4		
5	MS661140		PLUG,TAPER				1	1		A
6	31A01-11100		BOLT,CYLINDER HEAD				14	14		A
7	31A01-33300		GASKET,CYLINDER HEAD				1	1		A
8	MM408470		HANGER,ENGINE				2	2		A
9	F1805-10020		BOLT,W/WASHER B/W				2	2		A

04-01 VALVE MECHANISM

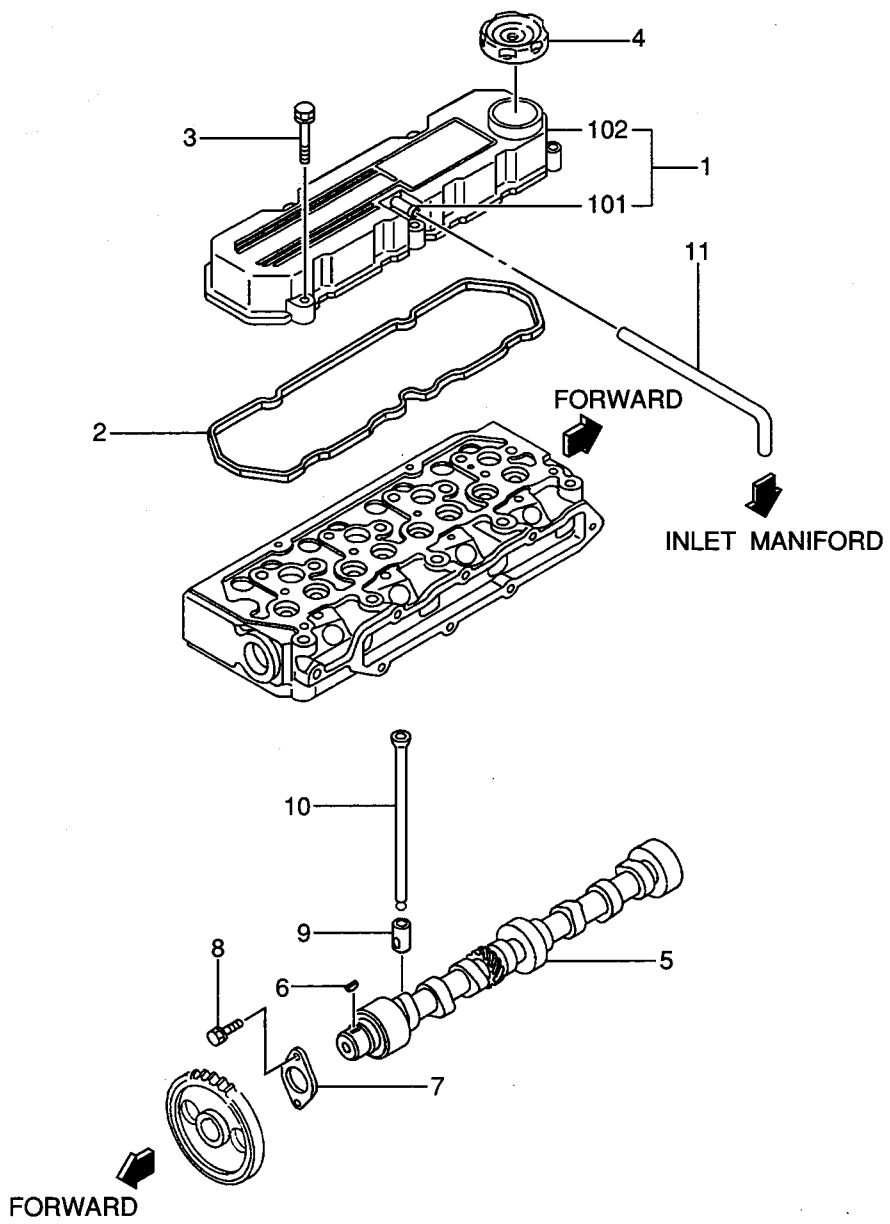


04-01 VALVE MECHANISM

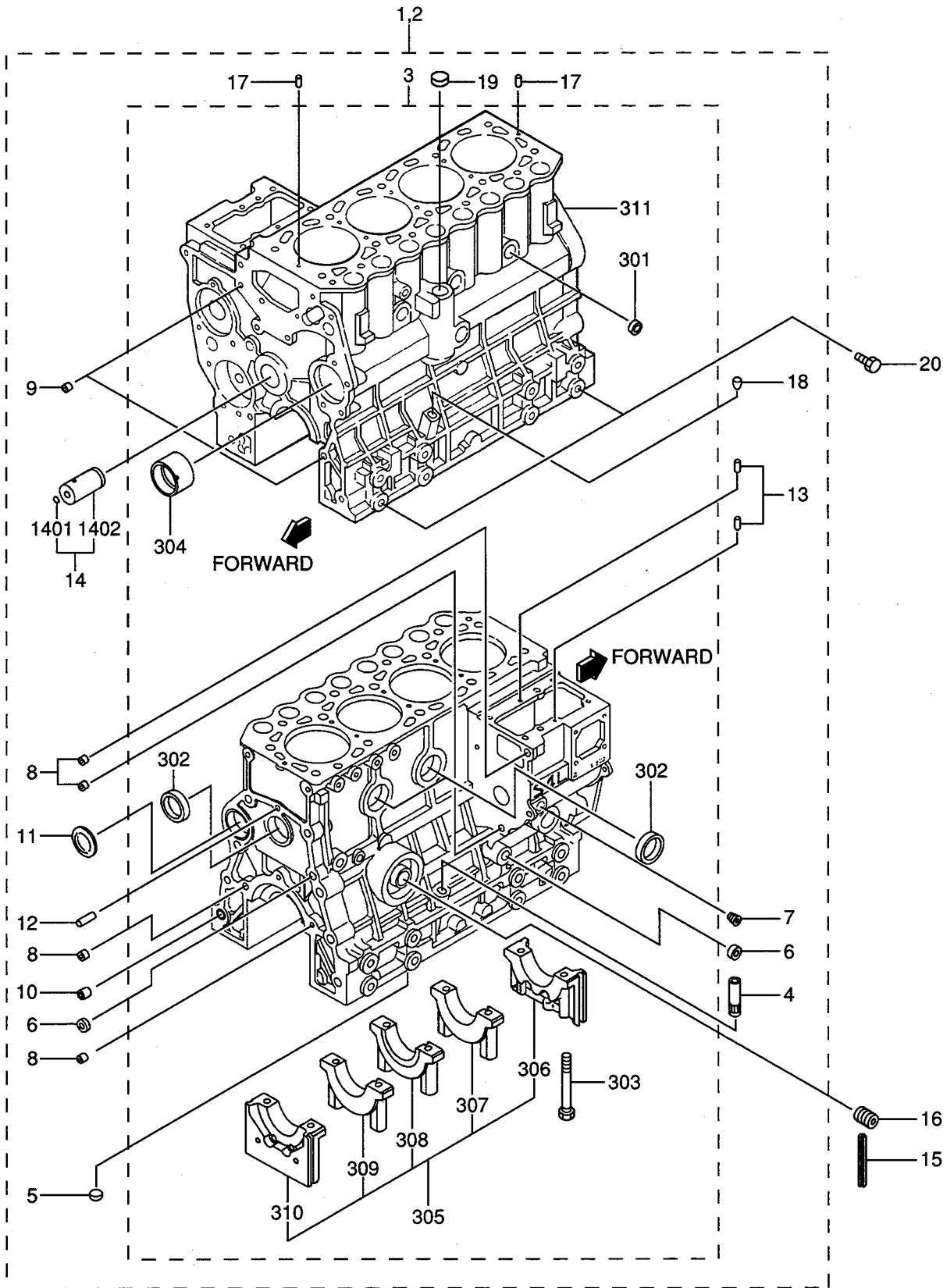
- 1. S4L-62AG2
- 2. S4L-62APH
- 3. S4L-62APH2
- 4. S4L2-62AG2
- 5. S4L2-62APH2

REF. NO.	PART NO.	RSC /EN PQG	PART NAME & DESCRIPTION	MODEL&QTY					APPLICABLE SERIAL NO.	MV /R ORD
				1	2	3	4	5		
1	31A04-30100		VALVE, INLET	4	.	.	4	.		
2	31A04-00400		VALVE, INLET	.	4	4	.	4		
3	31A04-20200		VALVE, EXHAUST	4	.	.	4	.		
4	31A04-00500		VALVE, EXHAUST	.	4	4	.	4		
5	31A04-01301		SPRING, VALVE	8	8	8	8	8		
6	MM433306		RETAINER, VALVE STEM	8	8	8	8	8		
7	MD016483		LOCK, VALVE SPRING	16	16	16	16	16		
8	MD115472		SEAL, VALVE STEM	8	8	8	8	8		
9	31A04-00700		CAP, VALVE STEM	8	8	8	8	8		
10	31A04-30043		ROCKER & SHAFT ASSY	1	1	1	1	1		
1001	F1035-05010		BOLT	1	1	1	1	1		
1002	MF522010		RING, SNAP	2	2	2	2	2		
1003	31A04-11024		ROCKER ASSY	8	8	8	8	8		
1004	F2325-08000		NUT, JAM	8	8	8	8	8		
1005	*		ROCKER ARM	8	8	8	8	8		
1006	32A04-02401		SCREW, ROCKER	8	8	8	8	8		
1007	31A04-21010		SHAFT ASSY, ROCKER	1	1	1	1	1		
1008	MD021204		CAP, SEALING	2	2	2	2	2		
1009	*		SHAFT, ROCKER	1	1	1	1	1		
1010	31A04-34100		BRACKET, ROCKER SHAFT	1	1	1	1	1		
1011	31A04-34300		BRACKET, ROCKER SHAFT	3	3	3	3	3		
1012	32C04-04500		SPRING, ROCKER	3	3	3	3	3		
1013	32C04-06100		BOLT, ROCKER BRACKET	4	4	4	4	4		
11	31A65-11200		SHAFT, FUEL INJ PUMP	1	1	1	1	1		
12	MD703856		BEARING, RADIAL BALL	1	1	1	1	1		
13	MD000425		WASHER	1	1	1	1	1		
14	MF476018		KEY, SUNK	1	1	1	1	1		
15	F1805-08016		BOLT, W/WASHER	1	1	1	1	1		
			B/W							

04-02 ROCKER COVER & CAMSHAFT



07-01 CRANKCASE ASSY



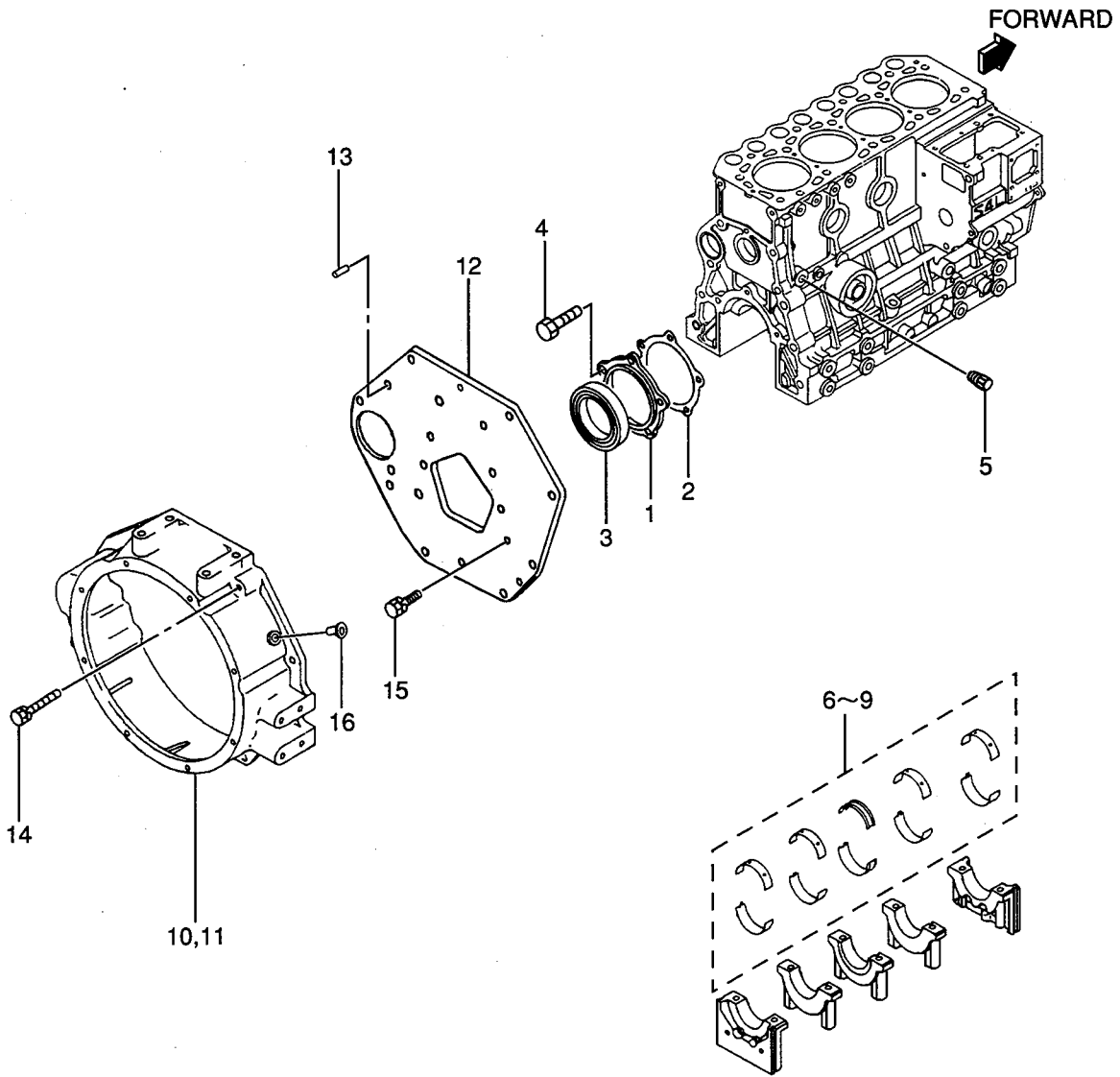
07-01

CRANKCASE ASSY

1. S4L-62AG2
 2. S4L-62APH
 3. S4L-62APH2
 4. S4L2-62AG2
 5. S4L2-62APH2

- 11-

REF. -NO.	PART NO.	RSC /EN PQG	PART NAME & DESCRIPTION	MODEL&QTY					APPLICABLE SERIAL NO. FROM@--@UPTO	MV /R ORD
				1	2	3	4	5		
1	31A07-52021		BLOCK ASSY,CYLINDER	.	1	1	.	1		
2	31A07-13021		BLOCK ASSY,CYLINDER	1	.	.	1	.		
3	*		BLOCK SUB ASSY,CYL	1	1	1	1	1		
301	04826-22000		CAP,SEALING	3	3	3	3	3		
302	04826-23500		CAP,SEALING	3	3	3	3	3		
303	31A07-00801		BOLT,METAL CAP	10	10	10	10	10		A
304	31A07-03100		BUSH,CAMSHAFT	1	1	1	1	1		
305	*		CAP SET,METAL	1	1	1	1	1		
306	*		CAP,METAL FRONT	1	1	1	1	1		
307	*		CAP,METAL NO.2	1	1	1	1	1		
308	*		CAP,METAL NO.3	1	1	1	1	1		
309	*		CAP,METAL NO.4	1	1	1	1	1		
310	*		CAP,METAL REAR	1	1	1	1	1		
311	*		BLOCK,CYLINDER	1	1	1	1	1		
4	MM430613		GUIDE,OIL LEVEL GAGE	1	1	1	1	1		
5	MF665532		CAP,SEALING	1	1	1	1	1		
6	MF665533		CAP,SEALING	3	3	3	3	3		
7	MS661140		PLUG,TAPER	.	1	1	.	1		A
8	MS471104		BUSHING,KNOCK	4	4	4	4	4		
9	MS471105		BUSHING,KNOCK	2	2	2	2	2		
10	MS471110		BUSHING,KNOCK	1	1	1	1	1		
11	MF665511		PLUG,EXPANSION	1	1	1	1	1		A
12	MF472404		PIN,DOWEL	1	1	1	1	1		A
13	MM409645		PIN,DOWEL	2	2	2	2	2		A
14	31A23-00051		SHAFT ASSY,IDLER	1	1	1	1	1		
1401	F8000-08000		BALL,STEEL	1	1	1	1	1		A
1402	*		SHAFT,IDLER	1	1	1	1	1		
15	31A07-12200		SEAL,SIDE	4	4	4	4	4		
16	30L07-00700		SHAFT,OIL FILTER	1	1	1	1	1		
17	F2846-05000		PIN,DOWEL	2	2	2	2	2		A
18	MD024256		PLUG,TAPER	1	1	1	1	1		A
19	MF665537		CAP,SEALING	1	1	1	1	1		
20	F1035-12025		BOLT	4	4	4	4	4		A



07-02

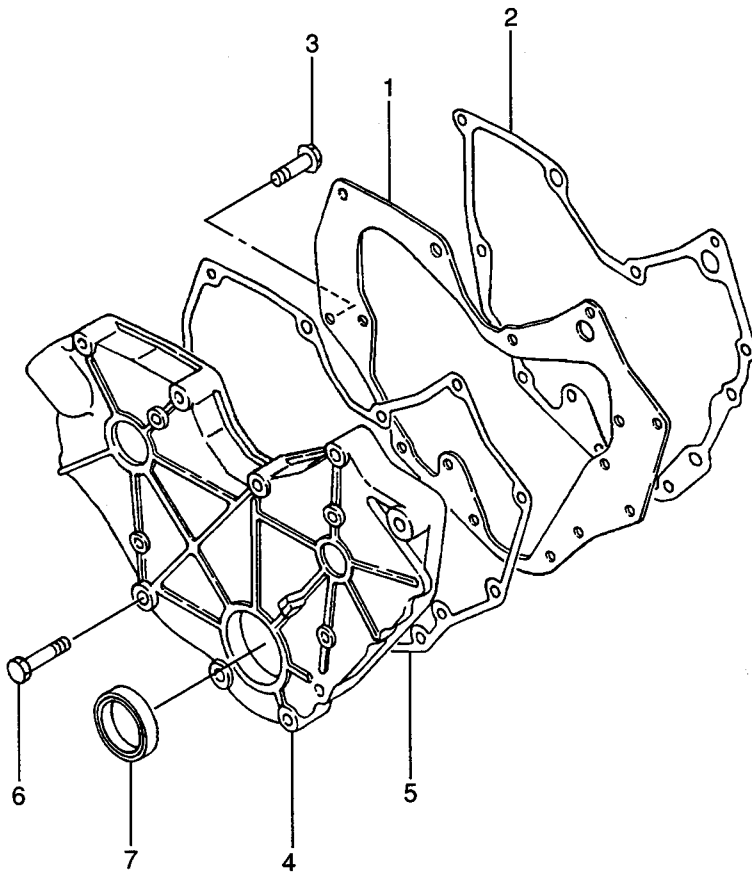
CRANKCASE

- 1. S4L-62AG2
- 2. S4L-62APH
- 3. S4L-62APH2
- 4. S4L2-62AG2
- 5. S4L2-62APH2

REF. NO.	PART NO.	RSC /EN PQG	PART NAME & DESCRIPTION	MODEL&QTY					APPLICABLE SERIAL NO.	MV /R ORD
				1	2	3	4	5		
1	31A07-11601		CASE,OIL SEAL	1	1	1	1	1	FROM@--@UPTO	
2	31A07-11701		GASKET,OIL SEAL CASE	1	1	1	1	1		
3	31A07-02300		SEAL,OIL	1	1	1	1	1		A
4	F1035-08020		BOLT	5	5	5	5	5		A
5	MD000269		PLUG,TAPER	1	1	1	1	1		A
6	MM437313		METAL SET STD	1	1	1	1	1		A
7	MM437884		METAL SET U.S 0.25	1	1	1	1	1		A
8	MM437885		METAL SET U.S 0.50	1	1	1	1	1		A
9	MM437886		METAL SET U.S 0.75	1	1	1	1	1		A
10	30A12-01101		HOUSING, FLYWHEEL	1	.	.	1	.		
11	MM431-53801		HOUSING, FLYWHEEL	.	.	1	.	1		
12	31A07-04401		PLATE, REAR	1	1	1	1	1		
13	MM408245		PIN, KNOCK	2	.	2	2	2		A
14	F1805-12050		BOLT,W/WASHER B/W	2	.	2	2	2		A
15	F1805-12028		BOLT,W/WASHER B/W	.	8	.	.	.		A
	F1805-12028		BOLT,W/WASHER B/W	13	.	13	13	13		A
16	05534-16000		PLUG	1	.	1	1	1		A

11-01

TIMING GEAR CASE
(FOR 3, 5)



11-01

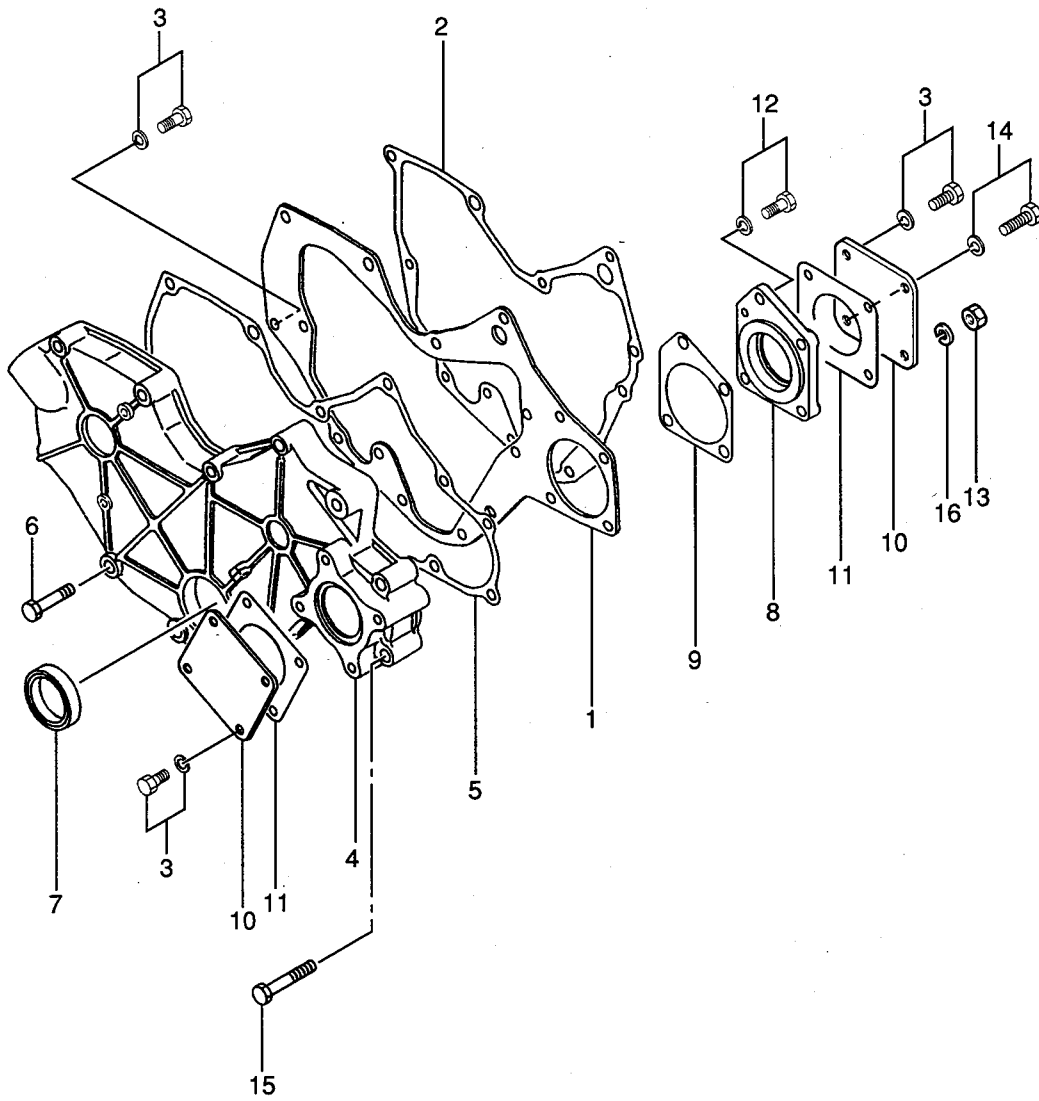
TIMING GEAR CASE
(FOR 3, 5)

- 1. S4L-62AG2
- 2. S4L-62APH
- 3. S4L-62APH2
- 4. S4L2-62AG2
- 5. S4L2-62APH2

REF. NO.	PART NO.	RSC /EN PQG	PART NAME & DESCRIPTION	MODEL & QTY					APPLICABLE SERIAL NO.	MV /R ORD
				1	2	3	4	5		
1	31A11-02200		PLATE, FRONT	.	.	1	.	1		
2	31A07-11901		GASKET, FRONT PLATE	.	.	1	.	1		
3	F1805-08016		BOLT, W/WASHER B/W	.	.	7	.	7		A
4	31A11-00500		CASE, GEAR	.	.	1	.	1		
5	31A11-11200		GASKET, GEAR CASE	.	.	1	.	1		
6	F1035-08045		BOLT	.	.	8	.	8		A
7	MD008762		SEAL, OIL	.	.	1	.	1		A

11-02

TIMING GEAR CASE
(FOR 1, 2, 4)



11-02

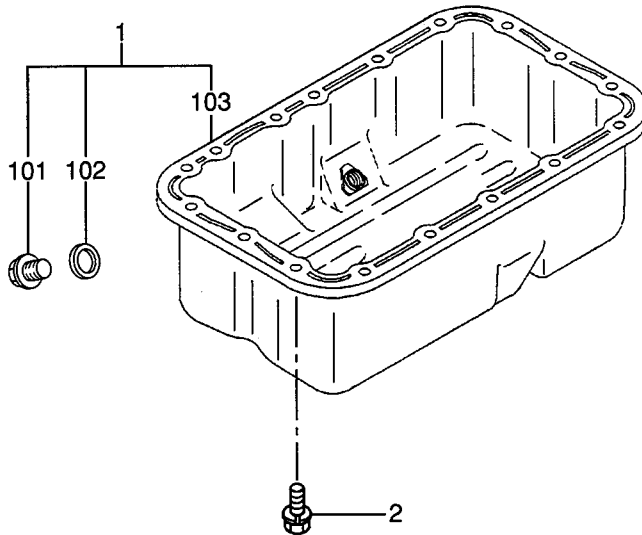
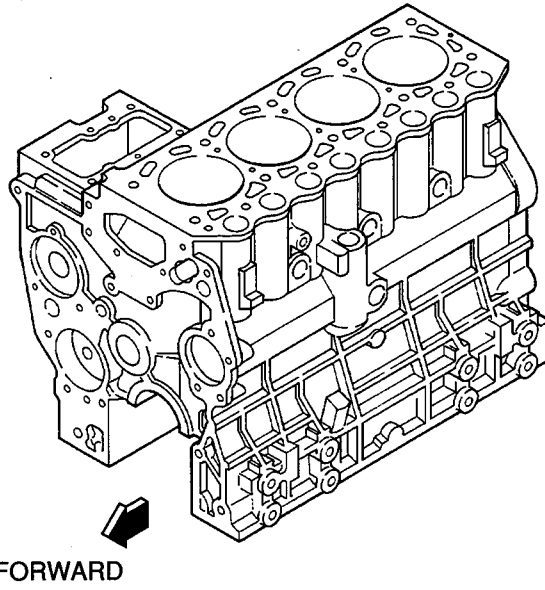
TIMING GEAR CASE
(FOR 1, 2, 4)

- 1. S4L-62AG2
- 2. S4L-62APH
- 3. S4L-62APH2
- 4. S4L2-62AG2
- 5. S4L2-62APH2

REF. NO.	PART NO.	RSC /EN PQG	PART NAME & DESCRIPTION	MODEL&QTY					APPLICABLE SERIAL NO.	M/R
				1	2	3	4	5		
1	31A11-02100		PLATE, FRONT	1	1	.	1	.		
2	31A07-11901		GASKET, FRONT PLATE	1	1	.	1	.		
3	F1805-08016		BOLT, W/WASHER	9	9	.	9	.		A
4	31A11-00802		CASE, GEAR, PTO	1	1	.	1	.		
5	31A11-11101		GASKET, GEAR CASE	1	1	.	1	.		
6	F1035-08045		BOLT	8	8	.	8	.		A
7	MDC08762		SEAL, OIL	1	1	.	1	.		A
8	31A11-05101		HOUSING, GEAR PUMP	1	1	.	1	.		
9	31A11-05201		GASKET, HOUSING	1	1	.	1	.		
10	MM401205		COVER, OIL PUMP	2	2	.	2	.		
11	30A11-00101		GASKET, O/PUMP COVER	2	2	.	2	.		
12	F1805-08030		BOLT, W/WASHER	1	1	.	1	.		A
13	MF430005		NUT	2	2	.	2	.		A
14	F1805-08035		BOLT	1	1	.	1	.		A
15	F1035-08070		BOLT	2	2	.	2	.		A
16	MF450405		WASHER, SPRING	2	2	.	2	.		A

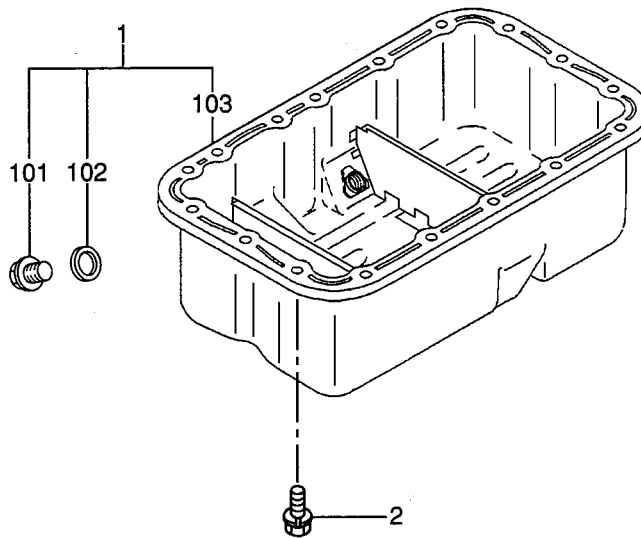
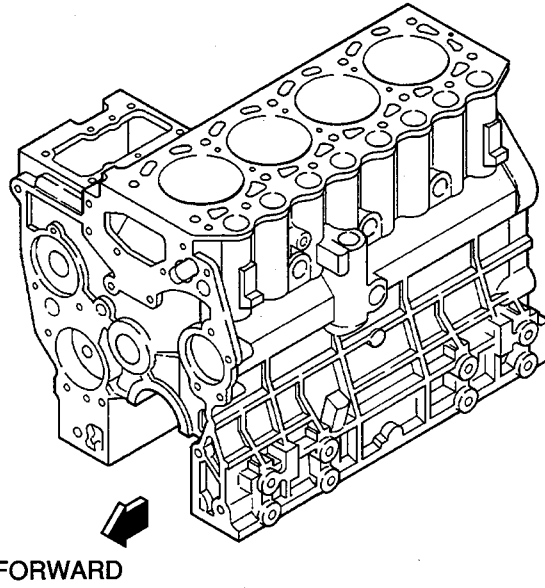
13-01

OIL PAN
(FOR 1, 4)

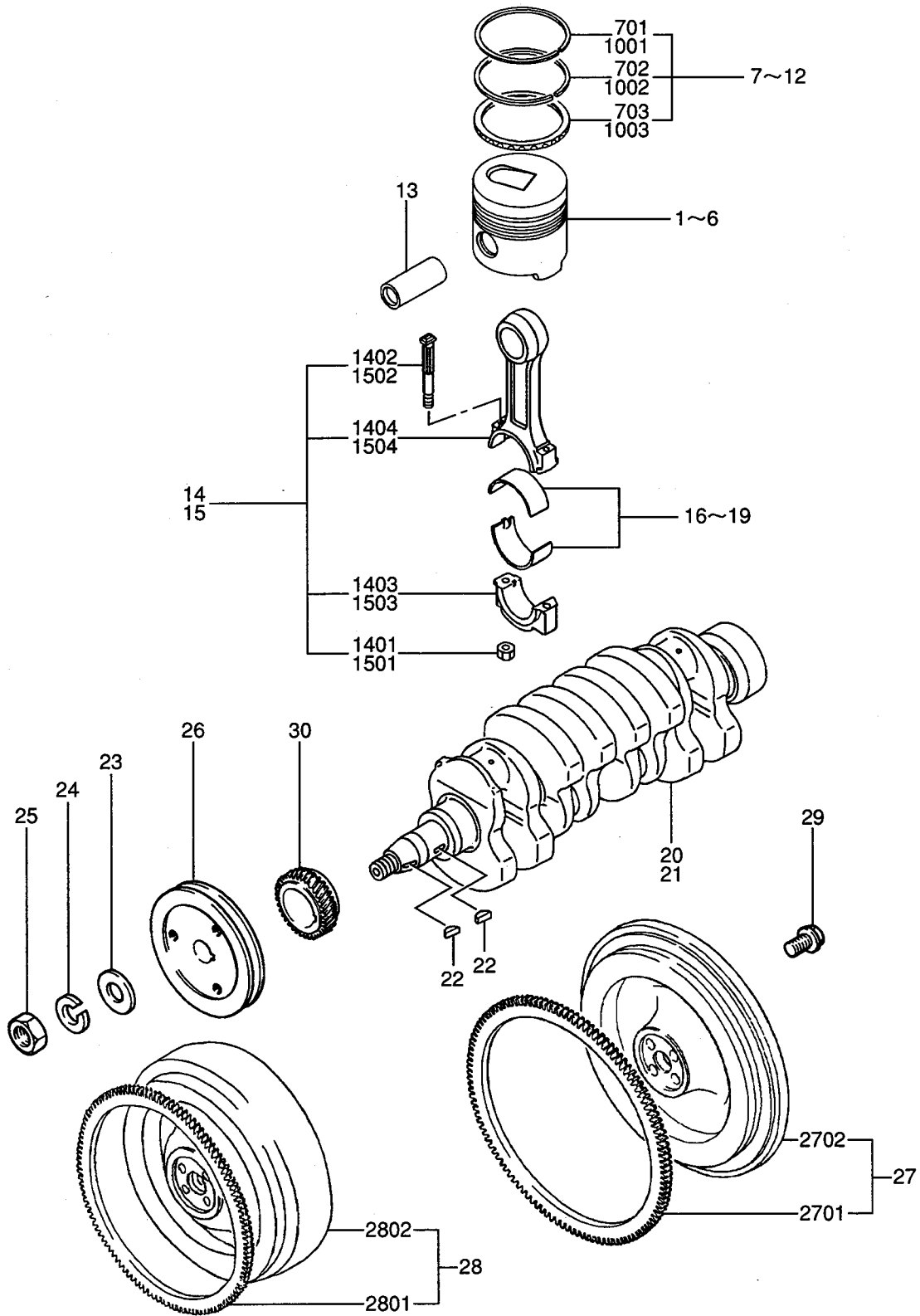


13-02

OIL PAN
(FOR 2, 3, 5)

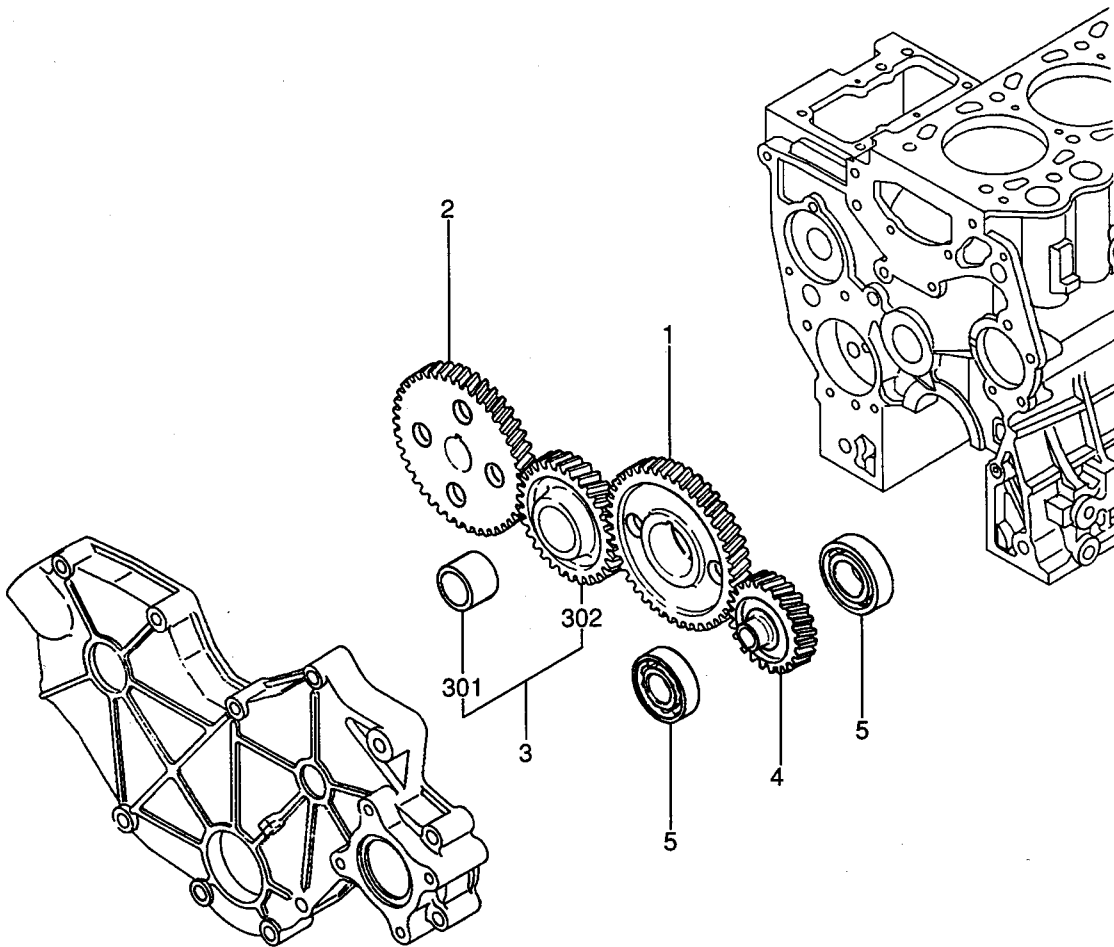


MAIN MOVING PARTS

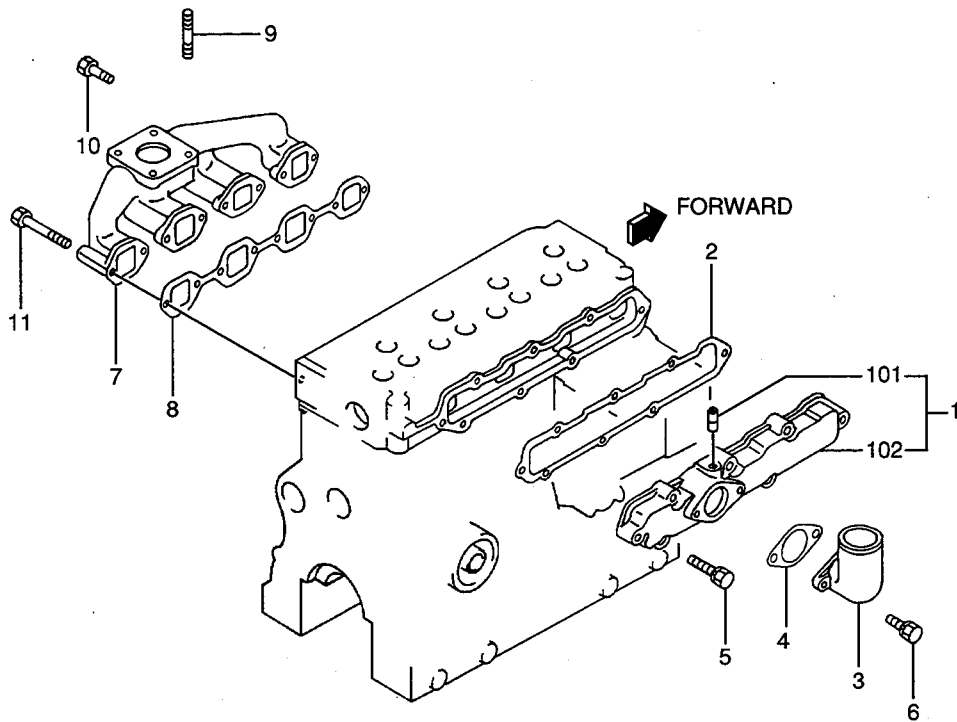


REF. NO.	PART NO.	RSC /EN PQG	PART NAME & DESCRIPTION	MODEL & QTY					APPLICABLE SERIAL NO.	M/R /R ORD	
				1	2	3	4	5			
1	31A17-11100		PISTON STD	4	.	.	4	.			A
2	31A17-11200		PISTON O.S 0.25	4	.	.	4	.			A
3	31A17-11300		PISTON O.S 0.50	4	.	.	4	.			A
4	31A17-07100		PISTON STD	.	4	4	.	4			A
5	31A17-07200		PISTON O.S 0.25	.	4	4	.	4			A
6	31A17-07300		PISTON O.S 0.50	.	4	4	.	4			A
7	MM433921		RING SET,PISTON STD	4	.	.	4	.			A
701	*		RING,PISTON NO.1	4	.	.	4	.			A
702	*		RING,PISTON NO.2	4	.	.	4	.			A
703	*		RING ASSY,OIL	4	.	.	4	.			A
8	MM433922		RING SET,PISTON O.S 0.25	4	.	.	4	.			A
9	MM433923		RING SET,PISTON O.S 0.50	4	.	.	4	.			A
10	31A17-00010		RING SET,PISTON STD	.	4	4	.	4			A
1001	*		RING,PISTON NO.1	.	4	4	.	4			A
1002	*		RING,PISTON NO.2	.	4	4	.	4			A
1003	*		RING ASSY,OIL	.	4	4	.	4			A
11	31A17-00020		RING SET,PISTON O.S 0.25	.	4	4	.	4			A
12	31A17-00030		RING SET,PISTON O.S 0.50	.	4	4	.	4			A
13	31A17-10602		PIN,PISTON	4	4	4	4	4			A
14	31A19-10024		ROD ASSY,CONNECTING	4	4	4	.	.			A
1401	MD006704		NUT,CONNECTING ROD	8	8	8	.	.			A
1402	MD021105		BOLT,CONNECTING ROD	8	8	8	.	.			A
1403	*		CAP,CONNECTING ROD	4	4	4	.	.			A
1404	*		CONNECTING ROD	4	4	4	.	.			A
15	31A19-01023		ROD ASSY,CONNECTING	.	.	.	4	4			A
1501	MD006704		NUT,CONNECTING ROD	.	.	.	8	8			A
1502	MD021105		BOLT,CONNECTING ROD	.	.	.	8	8			A
1503	*		CAP,CONNECTING ROD	.	.	.	4	4			A
1504	*		CONNECTING ROD	.	.	.	4	4			A
16	MM437305		METAL SET,CON-ROD STD	4	4	4	4	4			A
17	30A19-00010		METAL SET,CON-ROD U.S 0.25	4	4	4	4	4			A
18	30A19-00020		METAL SET,CON-ROD U.S 0.50	4	4	4	4	4			A
19	30A19-00030		METAL SET,CON-ROD U.S 0.75	4	4	4	4	4			A
20	31A20-00102		CRANKSHAFT	1	1	1	.	.			A
21	31A20-00200		CRANKSHAFT	.	.	.	1	1			A
22	MF476215		KEY,WOODRUFF	2	2	2	2	2			A
23	MF450010		WASHER,PLAIN	1	1	1	1	1			A
24	MF450410		WASHER,SPRING	1	1	1	1	1			A
25	MF430126		NUT	1	1	1	1	1			A
26	31A20-02400		PULLEY,CRANKSHAFT	1	1	1	1	1			A
27	31A21-01040		FLYWHEEL SUB ASSY	.	1	1	.	1			A
2701	MD024812		GEAR,RING	.	1	1	.	1			A
2702	*		FLYWHEEL	.	1	1	.	1			A
28	31A21-01080		FLYWHEEL SUB ASSY	1	.	.	1	.			A
2801	MD024812		GEAR,RING	1	.	.	1	.			A
2802	*		FLYWHEEL	1	.	.	1	.			A
29	MD952231		BOLT,DRIVE PLATE	4	4	4	4	4			A
30	31A23-03300		GEAR,CRANKSHAFT Z=28	1	1	1	1	1			A

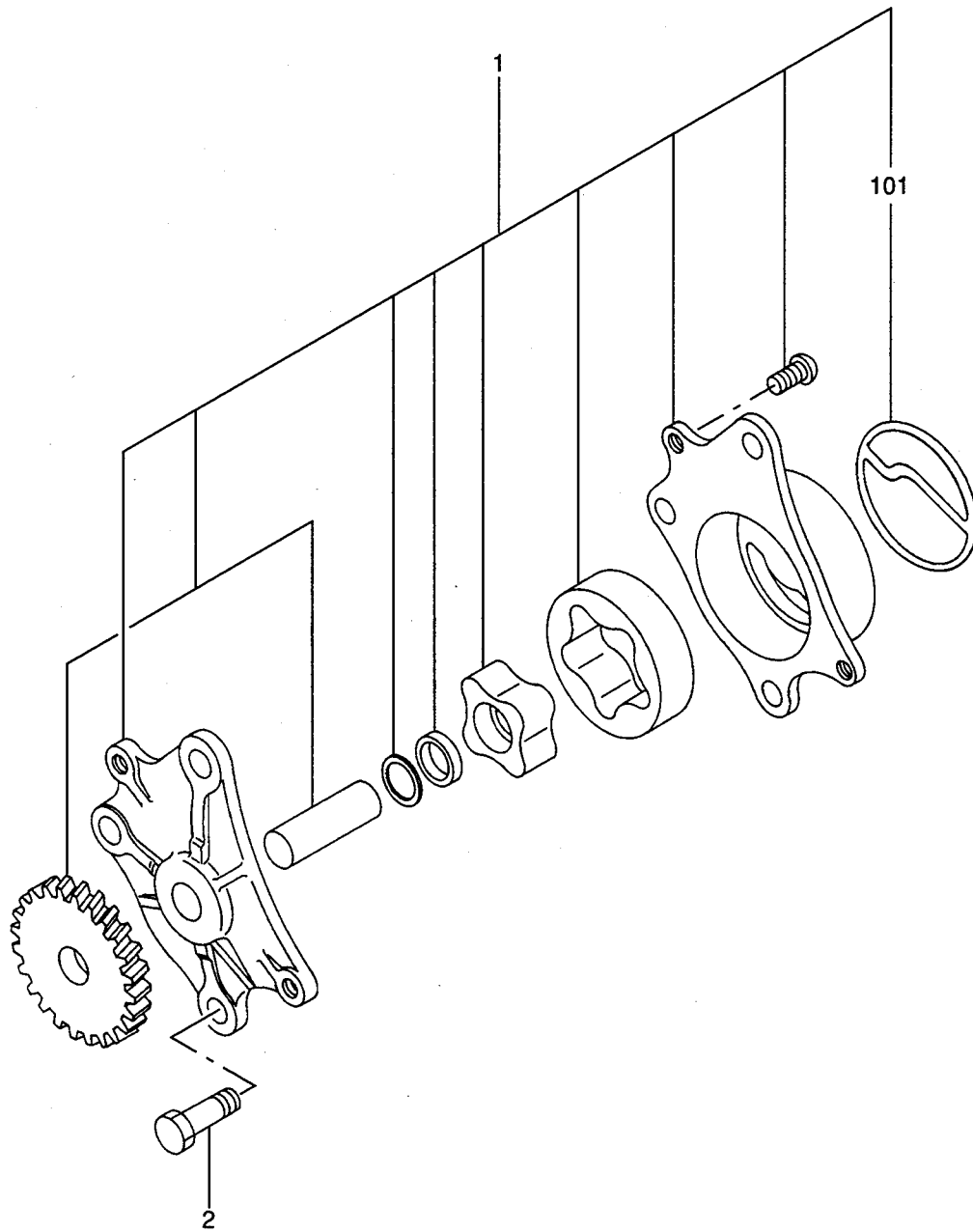
TIMING GEAR



INLET & EXHAUST MANIFOLD



REF. NO.	PART NO.	RSC /EN PQG	PART NAME & DESCRIPTION	MODEL&QTY					APPLICABLE SERIAL NO. FROM@--@UPTORD	MV /R ORD
				1	2	3	4	5		
1	31A30-20010		COVER ASSY, INLET	1	1	1	1	1		
101	*		PIPE	1	1	1	1	1		
102	*		COVER, INLET	1	1	1	1	1		
2	31A30-10902		GASKET, INLET COVER	1	1	1	1	1		
3	31A30-00300		PIPE, INLET	1	1	1	1	1		
4	31A30-00801		GASKET, INLET PIPE	1	1	1	1	1		
5	F1805-08035		BOLT, W/WASHER B/W	8	8	8	8	8		A
6	F1805-08020		BOLT, W/WASHER B/W	2	2	2	2	2		A
7	31A32-00402		MANIFOLD, EXHAUST	1	1	1	1	1		
8	31A32-01200		GASKET, EXHAUST MANF	1	1	1	1	1		
9	MF401936		STUD	4	4	4	4	4		
10	F1035-08020		BOLT	6	6	6	6	6		A
11	F1035-08055		BOLT	2	2	2	2	2		A



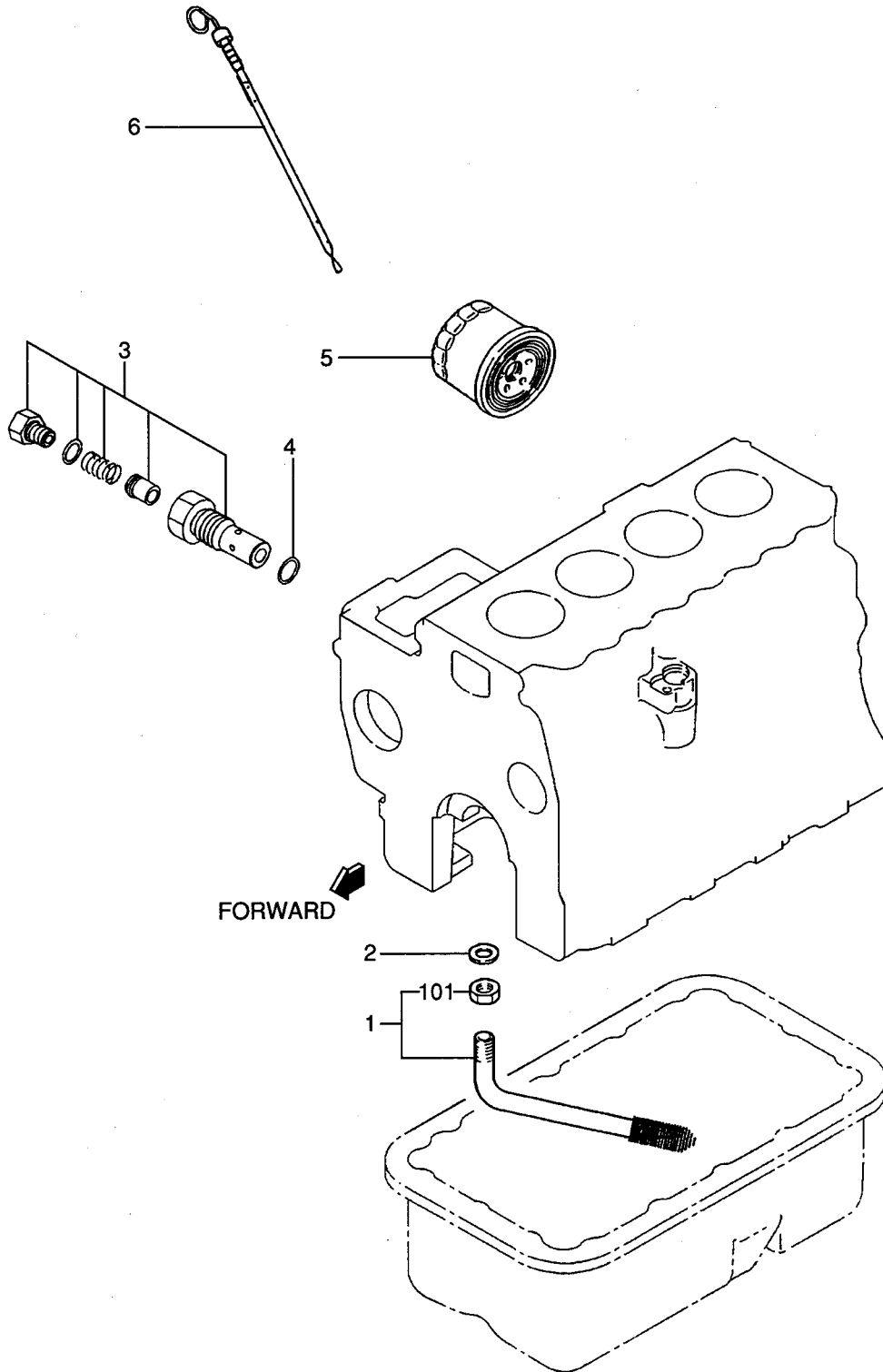
NOTE ; The shaft and inner rotor and gear which are force fitted to each other are not to be supplied individually.

35

OIL PUMP

- 1. S4L-62AG2
- 2. S4L-62APH
- 3. S4L-62APH2
- 4. S4L2-62AG2
- 5. S4L2-62APH2

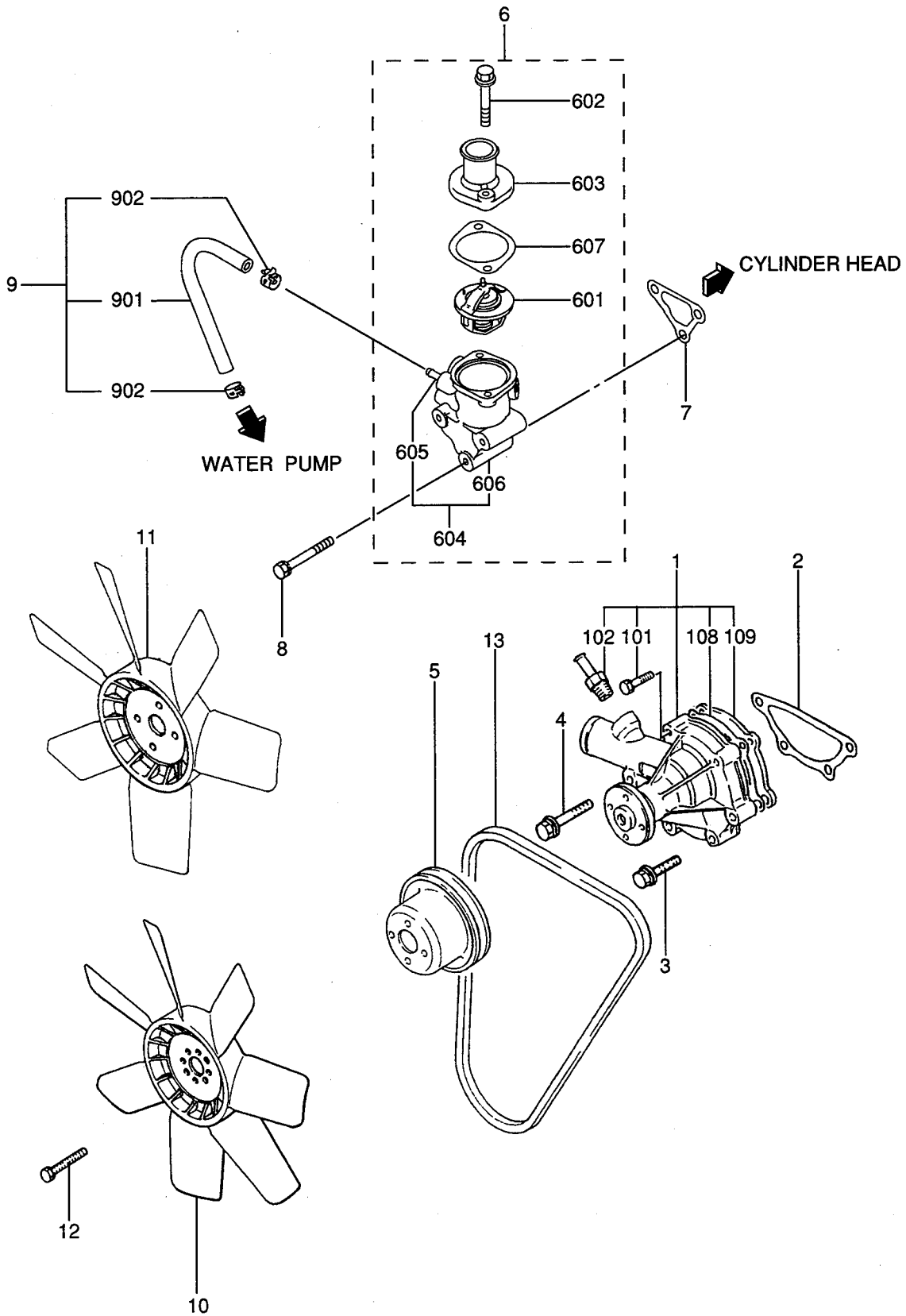
REF. No.	PART NO.	RSC /EN PQG	PART NAME & DESCRIPTION	MODEL&QTY					APPLICABLE SERIAL NO.	MV /R ORD
				1	2	3	4	5		
				FROM@--@UPTO						
1	31A35-30010		PUMP ASSY,OIL	1	1	1	1	1		
101	31A35-02300		PACKING,BODY	1	1	1	1	1		
2	F1035-08022		BOLT	3	3	3	3	3		A



- 1. S4L-62AG2
- 2. S4L-62APH
- 3. S4L-62APH2
- 4. S4L2-62AG2
- 5. S4L2-62APH2

REF. NO.	PART NO.	RSC /EN PQG	PART NAME & DESCRIPTION	MODEL&QTY					APPLICABLE SERIAL NO.	MV /R ORD
				1	2	3	4	5		
1	MM430176		STRAINER ASSY	1	1	1	1	1		
101	MF430729		NUT, JAM	1	1	1	1	1		A
2	MF660036		GASKET	1	1	1	1	1		A
3	32A36-05012		VALVE ASSY, RELIEF	1	1	1	1	1		
4	34340-00700		GASKET	1	1	1	1	1		A
5	30A40-00103		FILTER ASSY, OIL	1	1	1	1	1		A
6	31A42-00300		GAGE, OIL LEVEL	1	1	1	1	1		

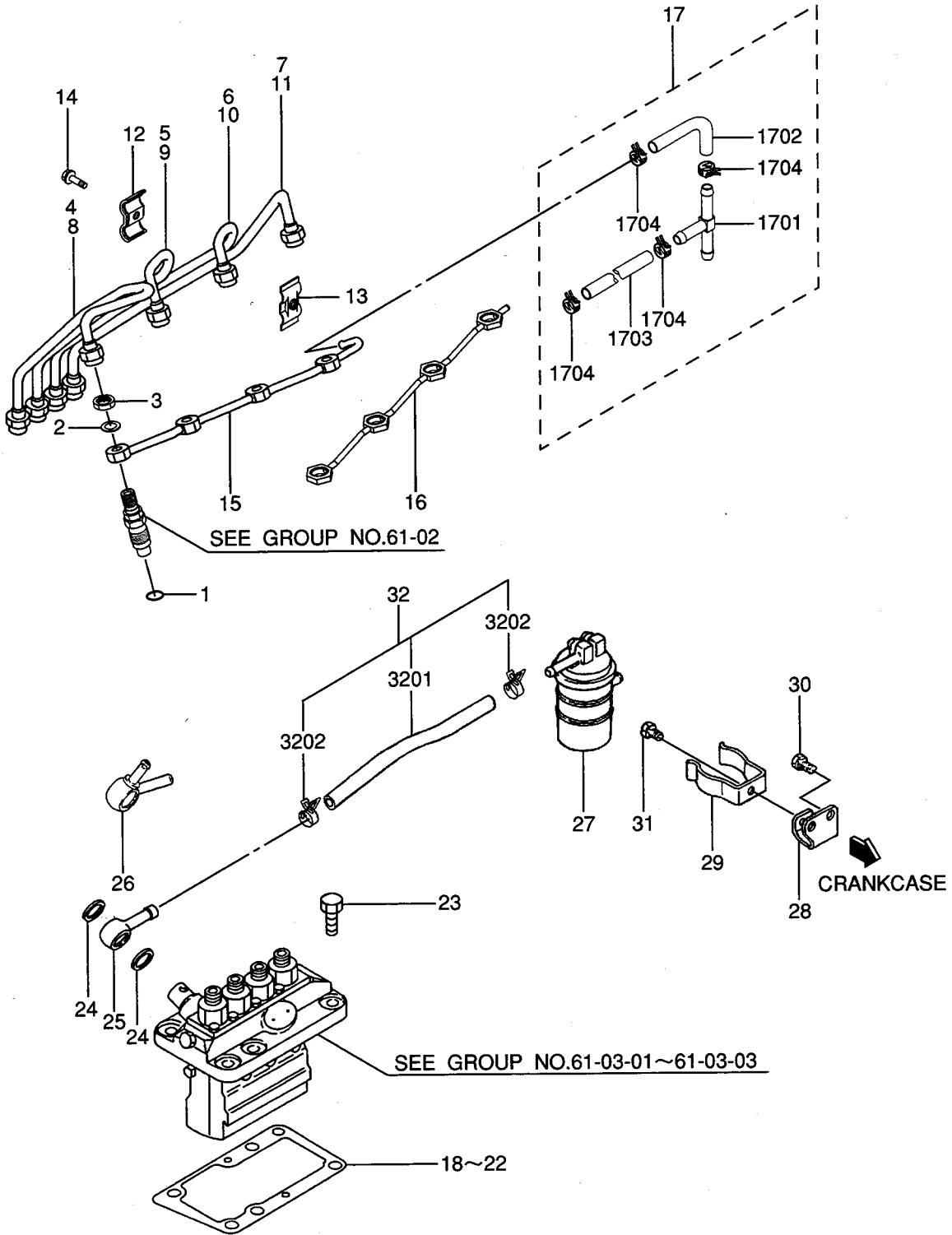
COOLING SYSTEM



- 1. S4L-62AG2
- 2. S4L-62APH
- 3. S4L-62APH2
- 4. S4L2-62AG2
- 5. S4L2-62APH2

REF. NO.	PART NO.	RSC /EN PQG	PART NAME & DESCRIPTION	MODEL&QTY					APPLICABLE SERIAL NO.	MV /R ORD
				1	2	3	4	5		
1	MM409302		PUMP ASSY, WATER	1	1	1	1	1		
101	F1805-06030		BOLT, W/WASHER B/W	2	2	2	2	2		A
102	MM409314		JOINT, WATER PUMP	1	1	1	1	1		A
108	MM409326		GASKET, WATER PUMP	1	1	1	1	1		A
109	MM409327		PLATE, WATER PUMP	1	1	1	1	1		A
2	30H45-00101		GASKET, WATER PUMP	1	1	1	1	1		
3	F1825-08045		BOLT, W/WASHER B/W	3	3	3	3	3		A
4	F1825-08060		BOLT, W/WASHER B/W	1	1	1	1	1		A
5	31A45-20700		PULLEY, WATER PUMP	1	1	1	1	1		
6	31A46-01060		THERMOSTAT ASSY	1	1	1	1	1		
601	MD001370		THERMOSTAT	1	1	1	1	1		
602	MF140227		BOLT, FLANGE	2	2	2	2	2		
603	MM409-31301		COVER, THERMOSTAT	1	1	1	1	1		
604	31A46-00062		CASE ASSY, THERMOSTAT	1	1	1	1	1		
605	*		PIPE, THERMOSTAT	1	1	1	1	1		
606	*		CASE, THERMOSTAT	1	1	1	1	1		
607	31A46-01200		GASKET, THERMOSTAT	1	1	1	1	1		
7	31A46-10101		GASKET, THERMO CASE	1	1	1	1	1		
8	F1805-08065		BOLT, W/WASHER B/W	3	3	3	3	3		A
9	MM413196		HOSE ASSY	1	1	1	1	1		
901	MS603014		HOSE	1	1	1	1	1		
902	MS660164		CLIP, HOSE	2	2	2	2	2		A
10	MM407460		FAN, COOLING	.	1	1	.	1		
11	MM435-86701		FAN, COOLING	1	.	.	1	.		
12	F1805-06012		BOLT, W/WASHER B/W	4	4	4	4	4		A
13	MD041704		V-BELT	1	1	1	1	1		A

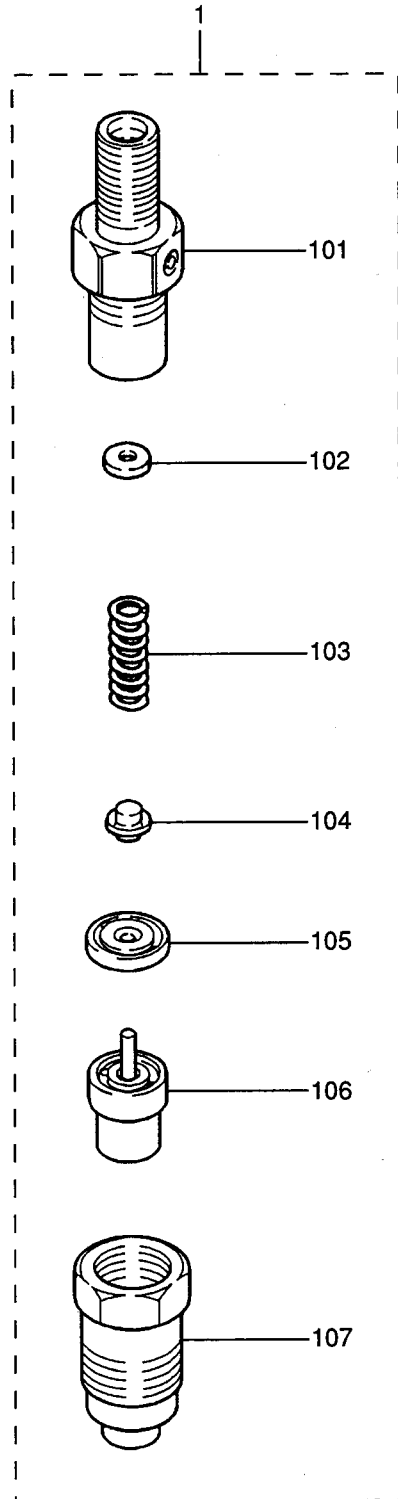
61-01 FUEL SYSTEM



61-01 FUEL SYSTEM

- 1. S4L-62AG2
- 2. S4L-62APH
- 3. S4L-62APH2
- 4. S4L2-62AG2
- 5. S4L2-62APH2

REF. NO.	PART NO.	RSC /EN PQG	PART NAME & DESCRIPTION	MODEL & QTY					APPLICABLE SERIAL NO.	MV /R ORD
				1	2	3	4	5		
1	MD070717		GASKET, HOLDER	4	4	4	4	4	FROM@--@UPTO	A
2	MD068355		GASKET, FUEL RETURN	4	4	4	4	4		A
3	MD068353		NUT	4	4	4	4	4		A
4	31A61-04100		PIPE, INJECTION NO.1	.	1	1	.	1		
5	31A61-04200		PIPE, INJECTION NO.2	.	1	1	.	1		
6	31A61-04300		PIPE, INJECTION NO.3	.	1	1	.	1		
7	31A61-04400		PIPE, INJECTION NO.4	.	1	1	.	1		
8	31A61-07100		PIPE, INJECTION NO.1	1	.	.	1	.		
9	31A61-07200		PIPE, INJECTION NO.2	1	.	.	1	.		
10	31A61-07300		PIPE, INJECTION NO.3	1	.	.	1	.		
11	31A61-07400		PIPE, INJECTION NO.4	1	.	.	1	.		
12	MM430703		CLAMP (A)	3	3	3	3	3		
13	MM430614		CLAMP (B)	3	3	3	3	3		
14	F1825-06025		BOLT, W/WASHER B/W	3	3	3	3	3		A
15	31A61-12600		PIPE, FUEL LEAK-OFF	.	1	1	.	1		
16	31A61-02500		PIPE, FUEL LEAK-OFF	1	.	.	1	.		
17	31A61-13400		HOSE ASSY, AIR VENT	1	.	.	1	.		
1701	31A61-01500		JOINT, THREE WAY	1	.	.	1	.		
1702	MS604016		HOSE, FUEL	1	.	.	1	.		
1703	MS604040		HOSE, FUEL	1	.	.	1	.		
1704	MS660169		CLIP, HOSE	4	.	.	4	.		A
18	MM409036		SHIM T=0.7	AR	AR	AR	AR	AR		A
19	MM409037		SHIM T=0.8	AR	AR	AR	AR	AR		A
20	MM409038		SHIM T=0.9	AR	AR	AR	AR	AR		A
21	MM409039		SHIM T=1.0	AR	AR	AR	AR	AR		A
22	MM409031		SHIM T=0.2	AR	AR	AR	AR	AR		A
23	F1035-08020		BOLT	6	6	6	6	6		A
24	MK661-14000		WASHER, SEAL	2	2	2	2	2		A
25	31A65-00100		COLLAR, UNION	.	1	1	.	1		
26	MM437140		COLLAR, UNION	1	.	.	1	.		
27	MM435190		FILTER ASSY, FUEL	1	1	1	1	1		A
28	MM409121		SUPPORT, FILTER	1	1	1	1	1		
29	MM400880		CLAMP, FILTER	1	1	1	1	1		
30	F1805-08016		BOLT, W/WASHER B/W	2	2	2	2	2		A
31	F1805-06012		BOLT, W/WASHER B/W	1	1	1	1	1		A
32	MM409066		HOSE ASSY, FUEL	1	1	1	1	1		
3201	MS602047		HOSE, FUEL	1	1	1	1	1		
3202	MS660163		CLIP, HOSE	2	2	2	2	2		A



61-02

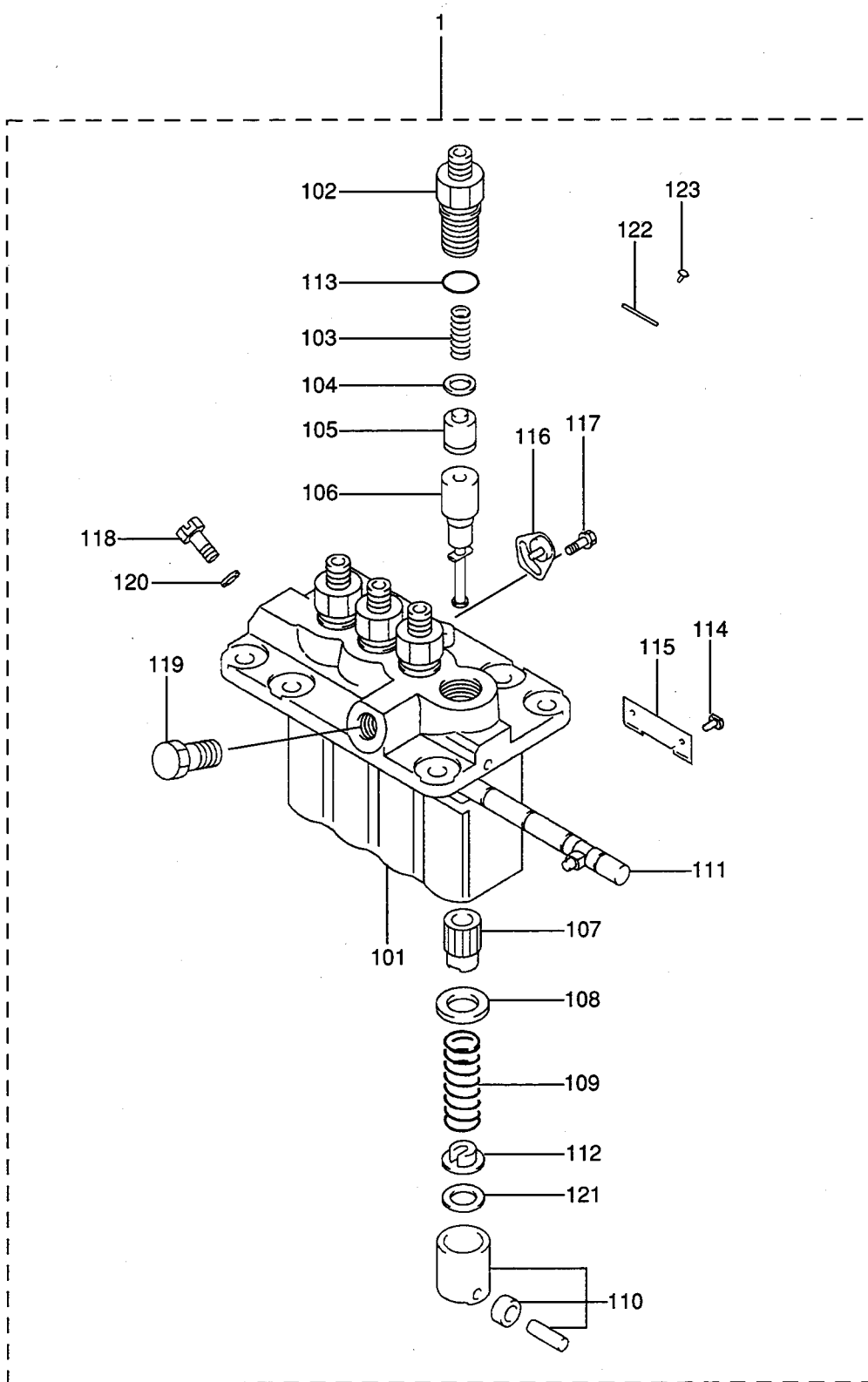
NOZZLE & NOZZLE HOLDER

- 1. S4L-62AG2
- 2. S4L-62APH
- 3. S4L-62APH2
- 4. S4L2-62AG2
- 5. S4L2-62APH2

REF. NO.	PART NO.	RSC /EN PQG	PART NAME & DESCRIPTION	MODEL&QTY					APPLICABLE SERIAL NO.	MV /R ORD		
				1	2	3	4	5				
1	MM435-94101		NOZZLE & HOLDER ASSY	093500-3840								
101	09311-03840		BODY SUB ASSY	MM514048	4	4	4	4	4			
102	09317-51810		WASHER T=1.25	MD603490	AR	AR	AR	AR	AR			
	09317-51830		WASHER T=1.30	MD603491	AR	AR	AR	AR	AR			
	09317-51850		WASHER T=1.35	MD603492	AR	AR	AR	AR	AR			
	09317-51870		WASHER T=1.40	MD603493	AR	AR	AR	AR	AR			
	09317-51890		WASHER T=1.45	MD603494	AR	AR	AR	AR	AR			
	09317-51910		WASHER T=1.50	MD603495	AR	AR	AR	AR	AR			
	09317-51930		WASHER T=1.55	MD603496	AR	AR	AR	AR	AR			
	09317-51950		WASHER T=1.60	MD603497	AR	AR	AR	AR	AR			
	09317-51970		WASHER T=1.65	MD603498	AR	AR	AR	AR	AR			
	09317-51990		WASHER T=1.70	MD603499	AR	AR	AR	AR	AR			
103	09312-70310		SPRING,PRESSURE	MM514047	4	4	4	4	4			A
104	09312-10380		PIN,PRESSURE	MM501838	4	4	4	4	4			
105	09317-40070		PIECE,DISTANCE	MM501841	4	4	4	4	4			
106	09340-05060		NOZZLE ASSY	MD603660	4	4	4	4	4			
107	09316-41351		NUT,NOZZLE RETAINING	MM514380	4	4	4	4	4			

FROM@--@UPTO

61-03-01 INJECTION PUMP
(FOR 1, 4)

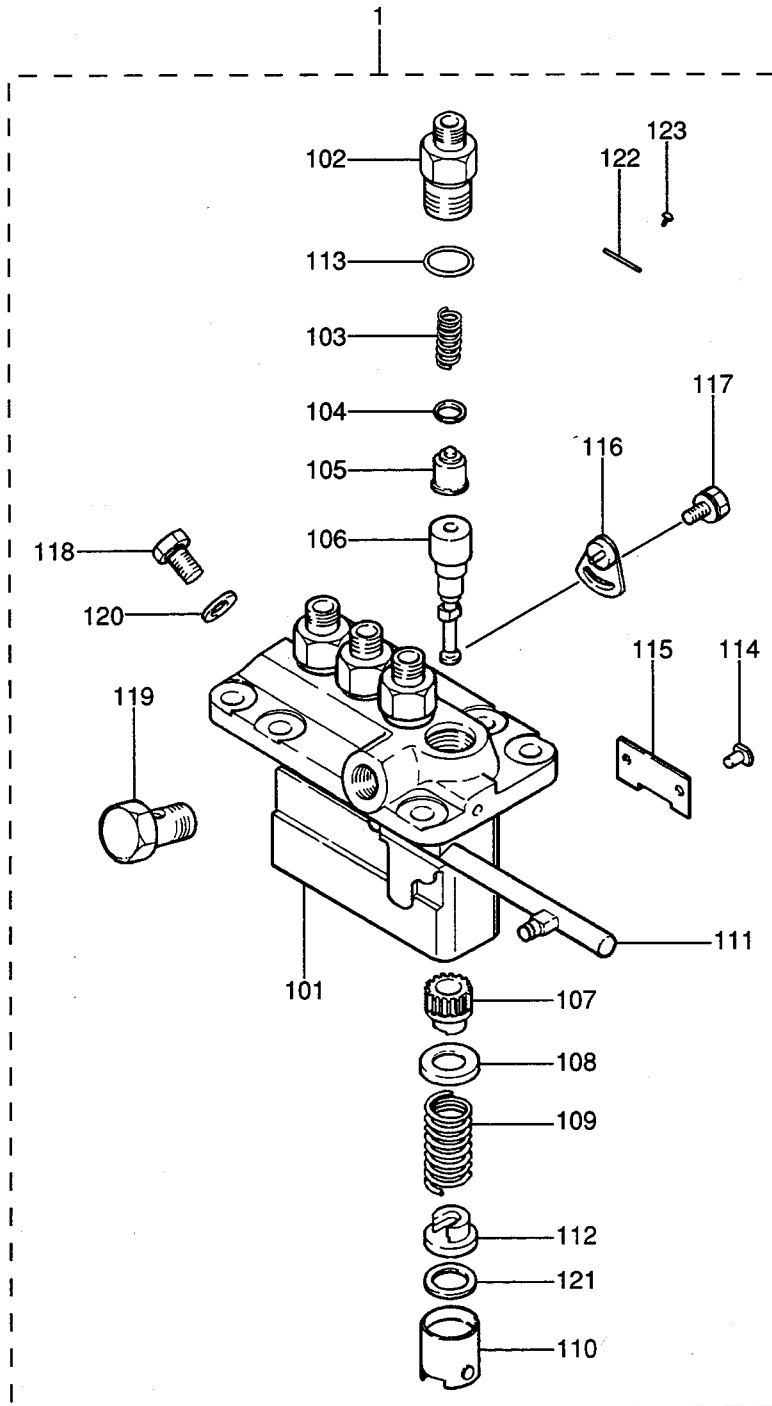


61-03-01 INJECTION PUMP
(FOR 1, 4)

- 1. S4L-62AG2
- 2. S4L-62APH
- 3. S4L-62APH2
- 4. S4L2-62AG2
- 5. S4L2-62APH2

REF. NO.	PART NO.	RSC /EN PQG	PART NAME & DESCRIPTION	MODEL&QTY					APPLICABLE SERIAL NO.	MV /R ORD
				1	2	3	4	5		
1	31A65-05060		PUMP ASSY,FUEL INJ 094500-7850 DEN	1	.	.	1	.		
101	09011-05070		HOUSING SUB ASSY 47X01-04200	1	.	.	1	.		
102	09013-00450		HOLDER,DELIVERY 47X01-13200	4	.	.	4	.		
103	09013-61100		SPRING,DELIVERY 47X01-13300	4	.	.	4	.		
104	09013-70130		GASKET,DELIVERY MM501856	4	.	.	4	.		
105	09014-02700		VALVE SUB ASSY 47X01-14200	4	.	.	4	.		
106	09015-05550		ELEMENT SUB ASSY 47X01-05400	4	.	.	4	.		
107	09016-10210		SLEEVE,CONTROL MM500229	4	.	.	4	.		
108	09016-30082		SEAT,SPRING MM501098	4	.	.	4	.		
109	09016-40170		SPRING,PLUNGER MM500360	4	.	.	4	.		A
110	09017-00170		TAPPET SUB ASSY MM500230	4	.	.	4	.		
111	09021-00440		RACK ASSY,CONTROL MM501255	1	.	.	1	.		
112	09030-10060		SEAT,SPRING MM500316	4	.	.	4	.		
113	90802-20150		O-RING MM500438	4	.	.	4	.		A
114	09018-30050		PIN,TAPPET MM500231	4	.	.	4	.		
115	09046-70030		PLATE MM500232	2	.	.	2	.		
116	09006-80020		PLATE,ADJUSTING MM514109	3	.	.	3	.		
117	94904-80800		BOLT,WASHER HEAD MM514195	3	.	.	3	.		
118	09024-40180		SCREW,AIR BLEEDER MM501152	1	.	.	1	.		
119	94918-00310		SCREW,HOLLOW MM500100	1	.	.	1	.		
120	94901-81020		WASHER,PIPE UNION MM500578	1	.	.	1	.		
121	*		SHIM *	AR	.	.	AR	.		
122	09450-37850		PLATE,NAME 47X01-17300	1	.	.	1	.		
123	94903-00030		RIVET,SERRATION MM500429	2	.	.	2	.		

61-03-02 INJECTION PUMP
(FOR 2, 3)

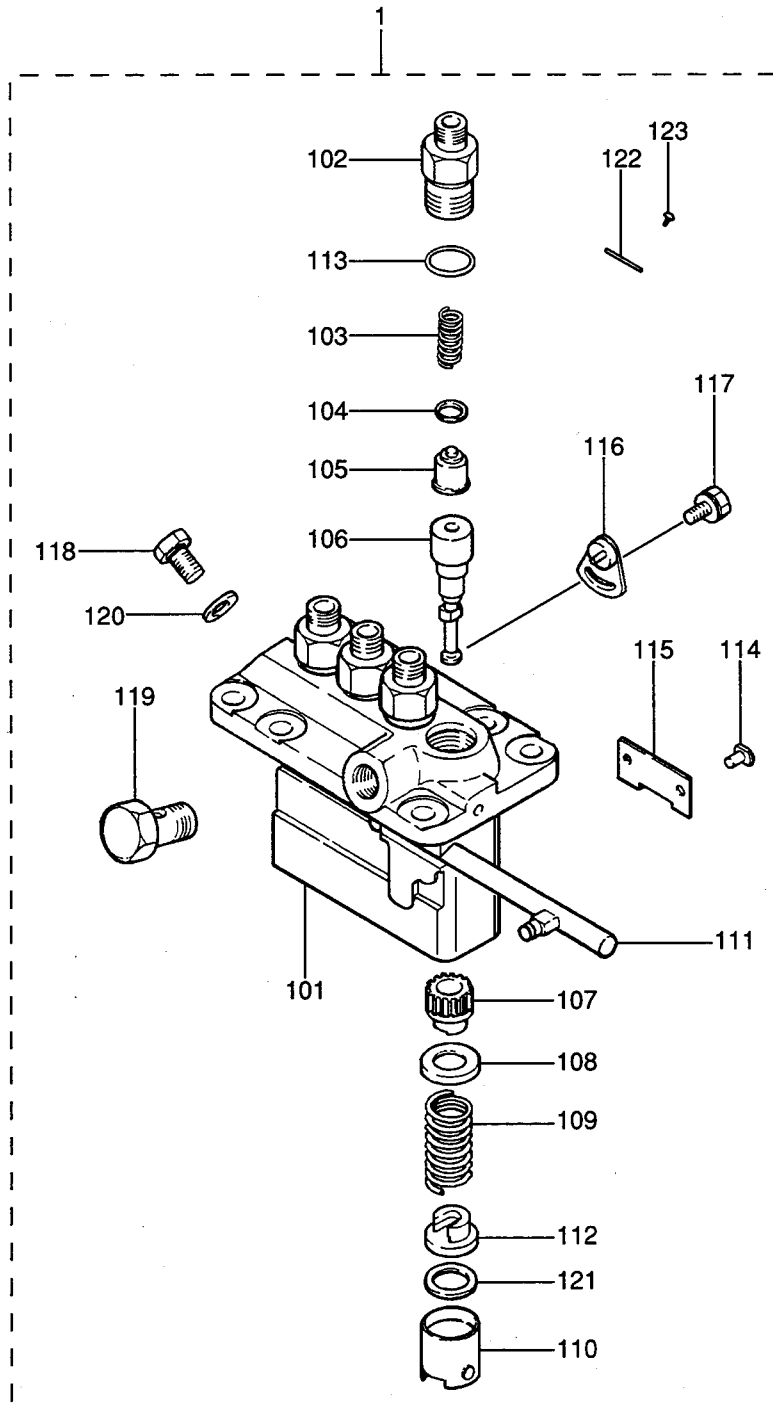


61-03-02 INJECTION PUMP
(FOR 2, 3)

- 1. S4L-62AG2
- 2. S4L-62APH
- 3. S4L-62APH2
- 4. S4L2-62AG2
- 5. S4L2-62APH2

REF. NO.	PART NO.	RISC /EN PQG	PART NAME & DESCRIPTION	MODEL&QTY					APPLICABLE SERIAL NO.	MV /R ORD			
				1	2	3	4	5					
1	31A65-04070		PUMP ASSY,FUEL INJ	094500-7480	DEN	.	1	1	.	.			
101	09011-05070		HOUSING SUB ASSY	47X01-04200		.	1	1	.	.			
102	09013-10520		HOLDER, DELIVERY	MM501507		.	4	4	.	.			
103	09013-60540		SPRING, DELIVERY	MM501161		.	4	4	.	.			
104	09013-70130		GASKET, DELIVERY	MM501856		.	4	4	.	.			
105	09014-02610		VALVE SUB ASSY	47X01-07700		.	4	4	.	.			
106	09015-05550		ELEMENT SUB ASSY	47X01-05400		.	4	4	.	.			
107	09016-10210		SLEEVE, CONTROL	MM500229		.	4	4	.	.			
108	09016-30082		SEAT, SPRING	MM501098		.	4	4	.	.			
109	09016-40170		SPRING, PLUNGER	MM500360		.	4	4	.	.			A
110	09017-00170		TAPPET SUB ASSY	MM500230		.	4	4	.	.			
111	09021-00440		RACK ASSY, CONTROL	MM501255		.	1	1	.	.			
112	09030-10060		SEAT, SPRING	MM500316		.	4	4	.	.			
113	90802-20150		O-RING	MM500438		.	4	4	.	.			A
114	09018-30050		PIN, TAPPET	MM500231		.	4	4	.	.			
115	09046-70030		PLATE	MM500232		.	2	2	.	.			
116	09006-80020		PLATE, ADJUSTING	MM514109		.	3	3	.	.			
117	94904-80800		BOLT, WASHER HEAD	MM514195		.	3	3	.	.			
118	09024-40180		SCREW, AIR BLEEDER	MM501152		.	1	1	.	.			
119	94918-00310		SCREW, HOLLOW	MM500100		.	1	1	.	.			
120	94901-81020		WASHER, PIPE UNION	MM500578		.	1	1	.	.			
121	*		SHIM	*		.	AR	AR	.	.			
122	09450-37480		PLATE, NAME	47X01-14800		.	1	1	.	.			
123	94903-00030		RIVET, SERRATION	MM500429		.	2	2	.	.			

61-03-03 INJECTION PUMP
(FOR 5)



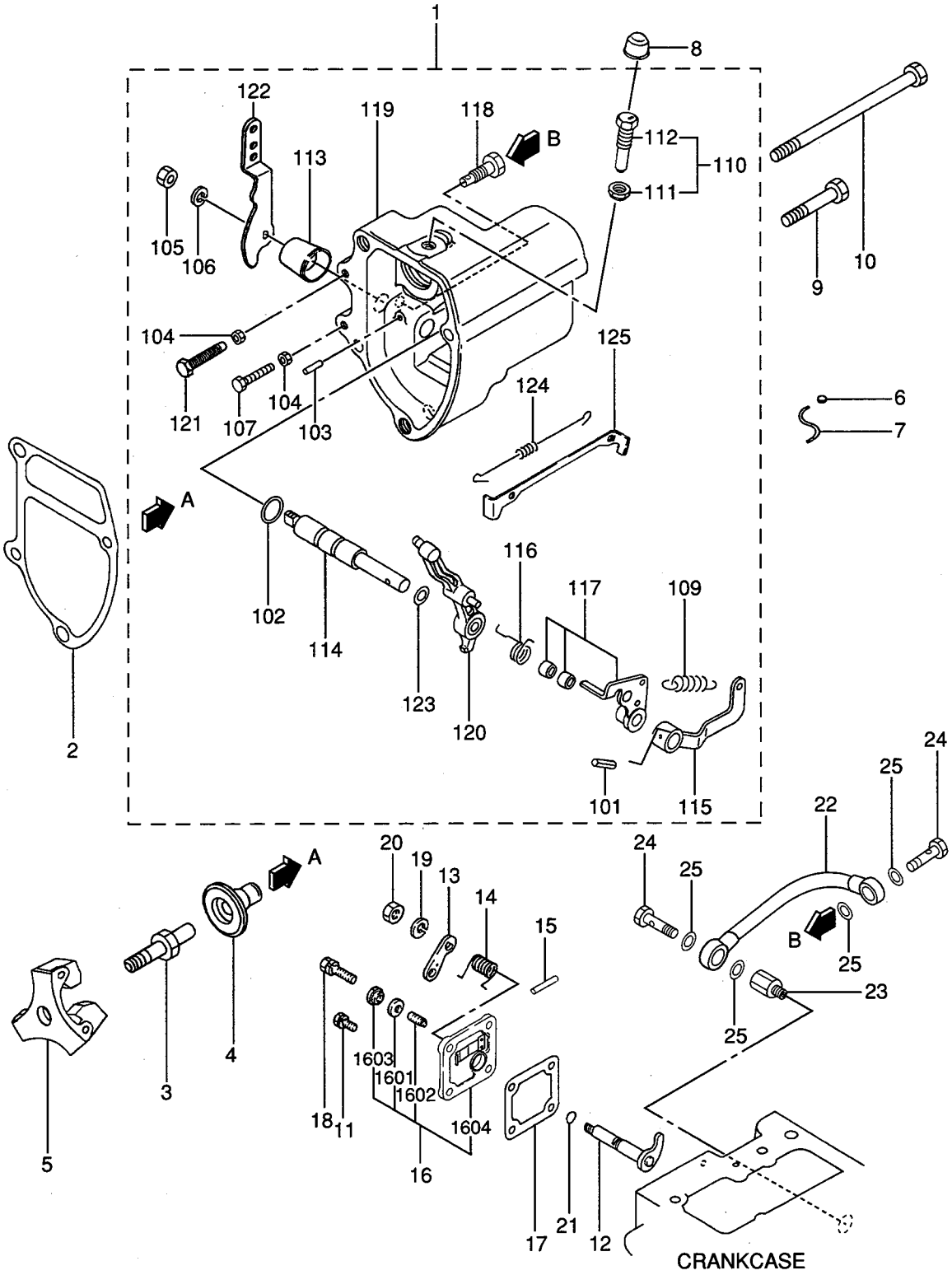
61-03-03 INJECTION PUMP
(FOR 5)

- 1. S4L-62AG2
- 2. S4L-62APH
- 3. S4L-62APH2
- 4. S4L2-62AG2
- 5. S4L2-62APH2

REF. NO.	PART NO.	RSC /EN PQG	PART NAME & DESCRIPTION	MODEL&QTY					APPLICABLE SERIAL NO.	MVR /R ORD			
				1	2	3	4	5					
1	31A65-04080		PUMP ASSY,FUEL INJ	094500-7490	DEN								
101	09011-05070		HOUSING SUB ASSY	47X01-04200									
102	09013-10520		HOLDER,DELIVERY	MM501507									
103	09013-60540		SPRING,DELIVERY	MM501161									
104	09013-70130		GASKET,DELIVERY	MM501856									
105	09014-02610		VALVE SUB ASSY	47X01-07700									
106	09015-05550		ELEMENT SUB ASSY	47X01-05400									
107	09016-10210		SLEEVE,CONTROL	MM500229									
108	09016-30082		SEAT,SPRING	MM501098									
109	09016-40170		SPRING,PLUNGER	MM500360									A
110	09017-00170		TAPPET SUB ASSY	MM500230									
111	09021-00440		RACK ASSY,CONTROL	MM501255									
112	09030-10060		SEAT,SPRING	MM500316									
113	90802-20150		O-RING	MM500438									A
114	09018-30050		PIN,TAPPET	MM500231									
115	09046-70030		PLATE	MM500232									
116	09006-80020		PLATE,ADJUSTING	MM514109									
117	94904-80800		BOLT,WASHER HEAD	MM514195									
118	09024-40180		SCREW,AIR BLEEDER	MM501152									
119	94918-00310		SCREW,HOLLOW	MM500100									
120	94901-81020		WASHER,PIPE UNION	MM500578									
121	*		SHIM	*					AR				
122	09450-37490		PLATE,NAME	47X01-14900									
123	94903-00030		RIVET,SERRATION	MM500429									

63-01

GOVERNOR
(FOR 1, 4)



63-01

GOVERNOR
(FOR 1, 4)1. S4L-62AG2
2. S4L-62APH
3. S4L-62APH2
4. S4L2-62AG2
5. S4L2-62APH2

- 45-

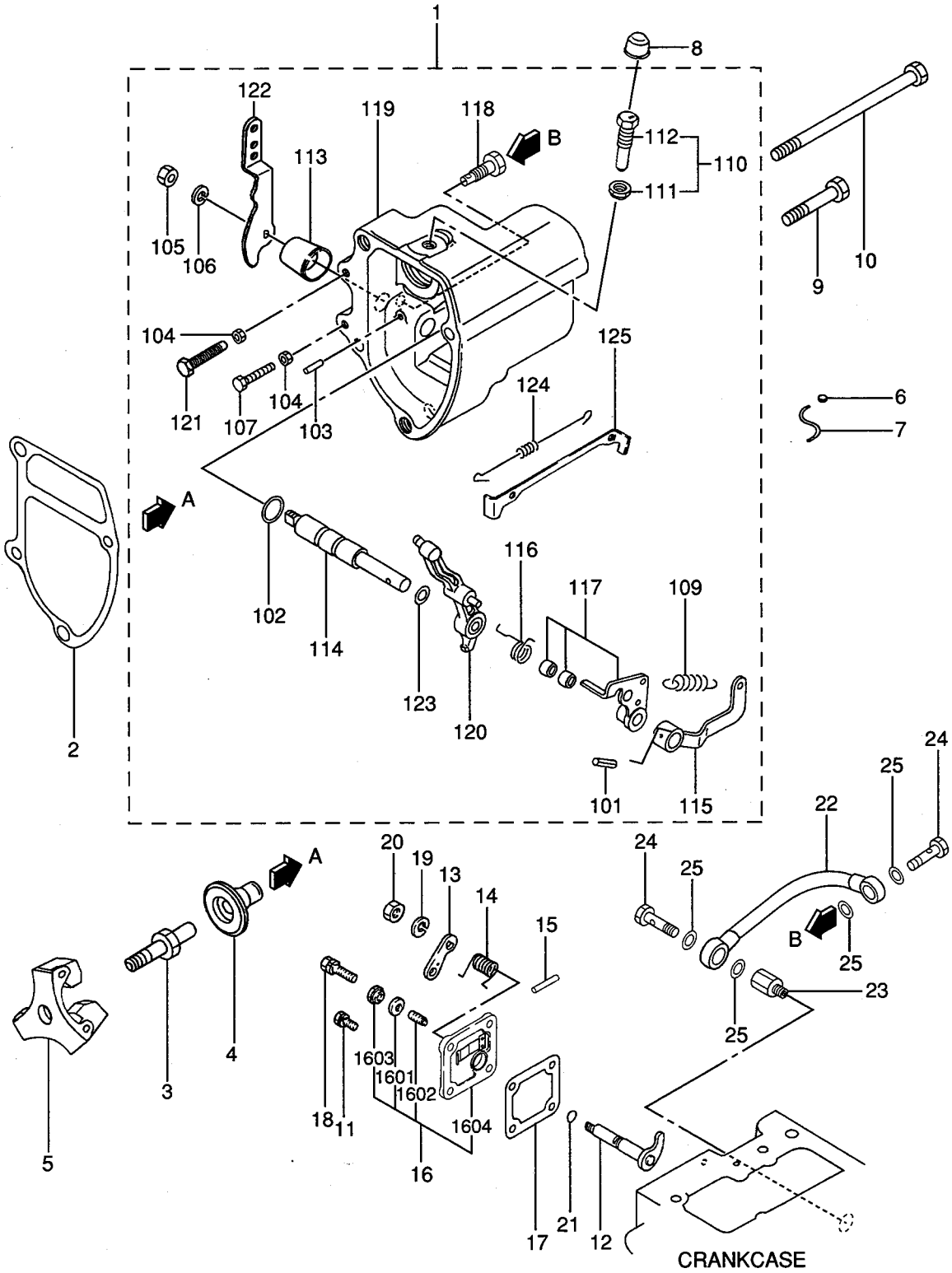
REF. -NO.	PART NO.	RSC /EN PQG	PART NAME & DESCRIPTION	MODEL&QTY					APPLICABLE SERIAL NO. FROM@--@UPTO	MV /R ORD
				1	2	3	4	5		
1	31A63-02070		CASE ASSY, GOVERNOR	1	.	.	1	.		
101	F2850-03020		PIN, SPRING	1	.	.	1	.		A
102	F3150-01010		O-RING	1	.	.	1	.		A
103	K8712630		PIN, GROOVED	1	.	.	1	.		
104	MF430004		NUT	2	.	.	2	.		A
105	MF430725		NUT, JAM	1	.	.	1	.		A
106	MF450405		WASHER, SPRING	1	.	.	1	.		A
107	MM331-31701		BOLT, SPEED SET	1	.	.	1	.		
109	MM433720		SPRING, GOVERNOR	1	.	.	1	.		A
110	30L63-00020		SCREW ASSY, RACK SET	1	.	.	1	.		A
111	30L63-00600		NUT, TORQUE SET	1	.	.	1	.		
112	31A63-05601		SCREW, RACK SET	1	.	.	1	.		
113	31A63-01800		COVER, GOVERNOR SHAFT	1	.	.	1	.		
114	31A63-02600		SHAFT, GOVERNOR	1	.	.	1	.		
115	31A63-02700		LEVER, GOV SPRING	1	.	.	1	.		
116	31A63-05300		SPRING, START	1	.	.	1	.		A
117	31A63-01010		LEVER ASSY, TENSION	1	.	.	1	.		
118	31A63-07100		CONNECTOR	1	.	.	1	.		
119	31A63-07200		CASE, GOVERNOR	1	.	.	1	.		
120	31A63-07300		LEVER, GOVERNOR	1	.	.	1	.		
121	31A63-07900		BOLT, LOW IDLE SET	1	.	.	1	.		
122	31A63-11301		LEVER, SPEED CONTROL	1	.	.	1	.		
123	31A63-15200		SHIM, GOVERNOR SHAFT	1	.	.	1	.		
124	31A63-00500		SPRING, TIE ROD	1	.	.	1	.		
125	31A63-06400		TIE-ROD	1	.	.	1	.		
2	31A63-12201		GASKET, GOVERNOR CASE	1	.	.	1	.		
3	31A63-10305		SHAFT, SLIDING SLEEVE	1	.	.	1	.		
4	31A63-25101		SLEEVE, SLIDING	1	.	.	1	.		
5	31A63-02030		WEIGHT ASSY, GOVERNOR	1	.	.	1	.		
6	MK992-00001		METAL	1	.	.	1	.		
7	MK993-00240		WIRE	1	.	.	1	.		
8	MM433614		CAP, TORQUE SET	1	.	.	1	.		
9	F1035-08045		BOLT	3	.	.	3	.		A
10	31A63-02300		BOLT, GOVERNOR CASE	1	.	.	1	.		
11	F1805-06018		BOLT, W/WASHER B/W	3	.	.	3	.		A
12	31A63-00060		LEVER ASSY, STOP	1	.	.	1	.		
13	MM409686		LEVER, STOP	1	.	.	1	.		
14	MM413362		SPRING, RETURN	1	.	.	1	.		A
15	K8712630		PIN, GROOVED	1	.	.	1	.		
16	31A63-01030		COVER ASSY, TIE ROD	1	.	.	1	.		
1601	MF660031		GASKET	1	.	.	1	.		A
1602	MM409167		SCREW, ADJUSTING	1	.	.	1	.		A
1603	MM409168		NUT	1	.	.	1	.		A
1604	31A63-08800		COVER, TIE ROD	1	.	.	1	.		
17	30A63-00101		GASKET, TIE-ROD COVER	1	.	.	1	.		
18	F1805-06030		BOLT, W/WASHER B/W	1	.	.	1	.		A
19	MF450405		WASHER, SPRING	1	.	.	1	.		A
20	MF430725		NUT, JAM	1	.	.	1	.		A
21	MF520002		O-RING	1	.	.	1	.		A
22	31A63-08100		PIPE, OIL	1	.	.	1	.		

01-01-30

615T03-00

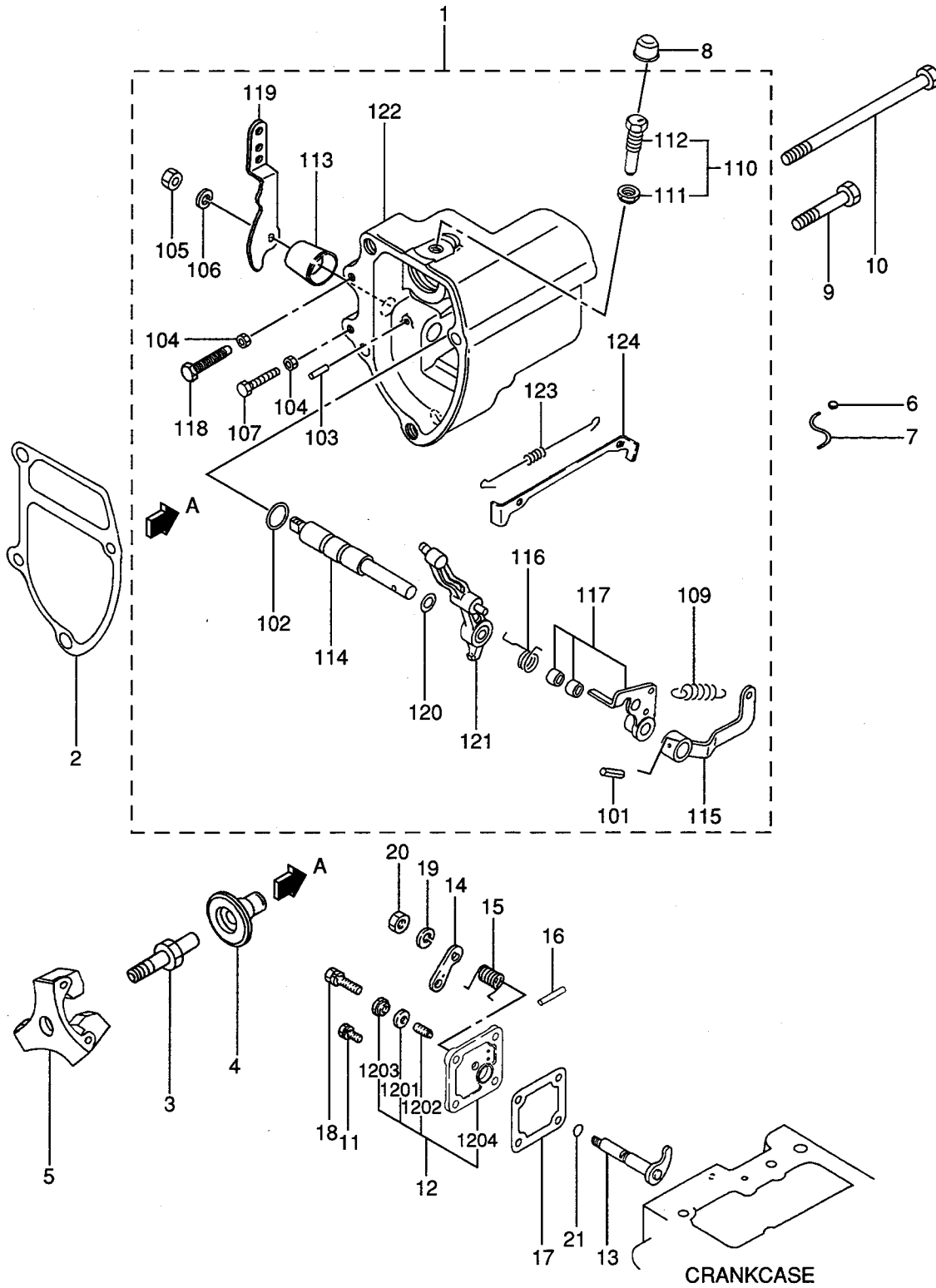
63-01

GOVERNOR
(FOR 1, 4)



63-02

GOVERNOR
(FOR 2, 3, 5)



63-02

GOVERNOR
(FOR 2, 3, 5)1. S4L-62AG2
2. S4L-62APH
3. S4L-62APH2
4. S4L2-62AG2
5. S4L2-62APH2

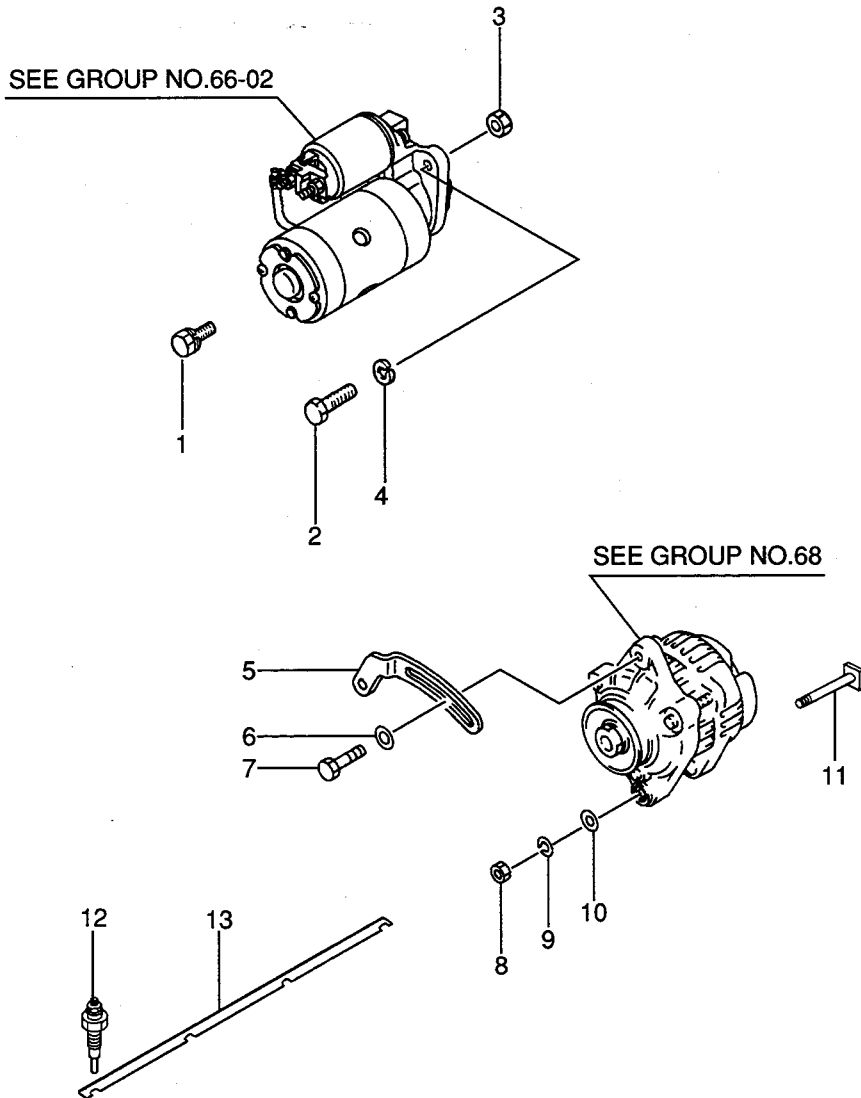
- 49-

REF. NO.	PART NO.	RSC /EN PQG	PART NAME & DESCRIPTION	MODEL&QTY					APPLICABLE SERIAL NO.	MV /R ORD	
				1	2	3	4	5			
1	31A63-02060		CASE ASSY, GOVERNOR		1	1		1			
101	F2850-03020		PIN, SPRING		1	1		1			A
102	F3150-01010		O-RING		1	1		1			A
103	K8712630		PIN, GROOVED		1	1		1			A
104	MF430004		NUT		2	2		2			A
105	MF430725		NUT, JAM		1	1		1			A
106	MF450405		WASHER, SPRING		1	1		1			A
107	MM331-31701		BOLT, SPEED SET		1	1		1			A
109	MM433675		SPRING, GOVERNOR		1	1		1			A
110	30L63-00020		SCREW ASSY, RACK SET		1	1		1			A
111	30L63-00600		NUT, TORQUE SET		1	1		1			A
112	31A63-05601		SCREW, RACK SET		1	1		1			A
113	31A63-01800		COVER, GOVERNOR SHAFT		1	1		1			A
114	31A63-02600		SHAFT, GOVERNOR		1	1		1			A
115	31A63-02700		LEVER, GOV SPRING		1	1		1			A
116	31A63-05300		SPRING, START		1	1		1			A
117	31A63-01010		LEVER ASSY, TENSION		1	1		1			A
118	31A63-07900		BOLT, LOW IDLE SET		1	1		1			A
119	31A63-11301		LEVER, SPEED CONTROL		1	1		1			A
120	31A63-15200		SHIM, GOVERNOR SHAFT		1	1		1			A
121	31A63-15500		LEVER, GOVERNOR		1	1		1			A
122	31A63-22100		CASE, GOVERNOR		1	1		1			A
123	31A63-00500		SPRING, TIE ROD		1	1		1			A
124	31A63-06400		TIE-ROD		1	1		1			A
2	31A63-12201		GASKET, GOVERNOR CASE		1	1		1			A
3	31A63-10305		SHAFT, SLIDING SLEEVE		1	1		1			A
4	31A63-20201		SLEEVE, SLIDING		1	1		1			A
5	31A63-11061		WEIGHT ASSY, GOVERNOR		1	1		1			A
6	MK992-00001		METAL		1	1		1			A
7	MK993-00240		WIRE		1	1		1			A
8	MM433614		CAP, TORQUE SET		1	1		1			A
9	F1035-08045		BOLT		3	3		3			A
10	31A63-02300		BOLT, GOVERNOR CASE		1	1		1			A
11	F1805-06018		BOLT, W/WASHER	B/W	3	3		3			A
12	31A63-00020		COVER ASSY, TIE ROD		1	1		1			A
1201	MF660031		GASKET		1	1		1			A
1202	MM409167		SCREW, ADJUSTING		1	1		1			A
1203	MM409168		NUT		1	1		1			A
1204	MM409642		COVER		1	1		1			A
13	31A63-00060		LEVER ASSY, STOP		1	1		1			A
14	MM409686		LEVER, STOP		1	1		1			A
15	MM413362		SPRING, RETURN		1	1		1			A
16	K8712630		PIN, GROOVED		1	1		1			A
17	30A63-00101		GASKET, TIE-ROD COVER		1	1		1			A
18	F1805-06030		BOLT, W/WASHER	B/W	1	1		1			A
19	MF450405		WASHER, SPRING		1	1		1			A
20	MF430725		NUT, JAM		1	1		1			A
21	MF520002		O-RING		1	1		1			A

01-01-30

615T03-00

66-01 ELECTRIC PARTS

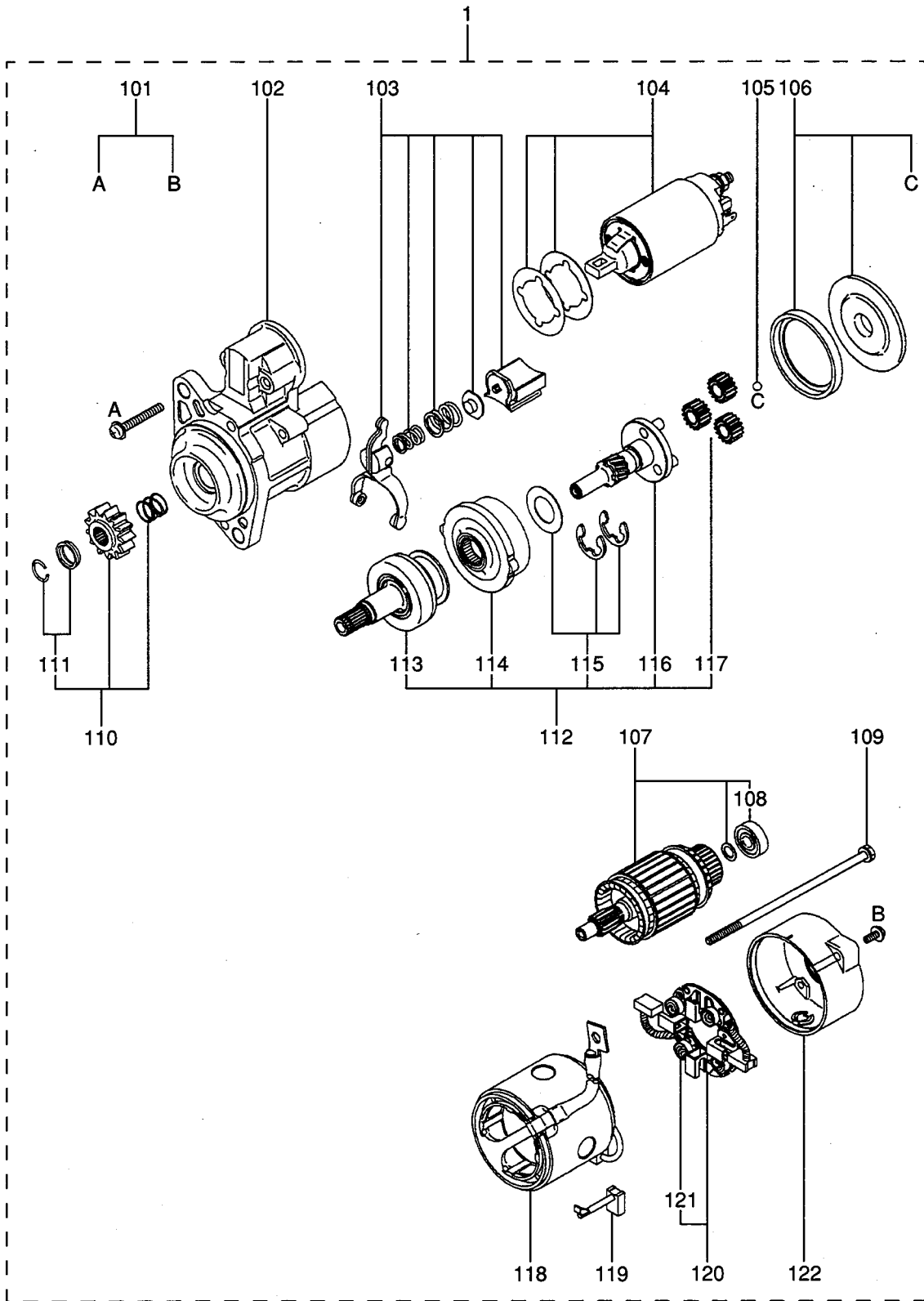


66-01

ELECTRIC PARTS

- 1. S4L-62AG2
- 2. S4L-62APH
- 3. S4L-62APH2
- 4. S4L2-62AG2
- 5. S4L2-62APH2

REF. NO.	PART NO.	RSC /EN PQG	PART NAME & DESCRIPTION	MODEL&QTY					APPLICABLE SERIAL NO.	MV /R ORD										
				1	2	3	4	5												
1	F1805-10025		BOLT,W/WASHER	B/W	1	.	1	1	1											
	F1805-10025		BOLT,W/WASHER	B/W	.	2	.	.	.											
2	MM409427		BOLT,STARTER		1	.	1	1	1											
3	MF430006		NUT		1	.	1	1	1											
4	MF450406		WASHER,SPRING		1	.	1	1	1											
5	31A68-02100		PLATE,ADJUSTING		1	1	1	1	1											
6	MD001521		WASHER		1	1	1	1	1											
7	MF140026		BOLT,FLANGE		1	1	1	1	1											
8	MF430006		NUT		1	1	1	1	1											
9	MF450406		WASHER,SPRING		1	1	1	1	1											
10	MF450006		WASHER,PLAIN		1	1	1	1	1											
11	31A68-20300		BOLT,ALTERNATOR		1	1	1	1	1											
12	32A66-03100		PLUG,GLOW		4	4	4	4	4											
13	31A66-04101		PLATE,CONNECTION		1	1	1	1	1											

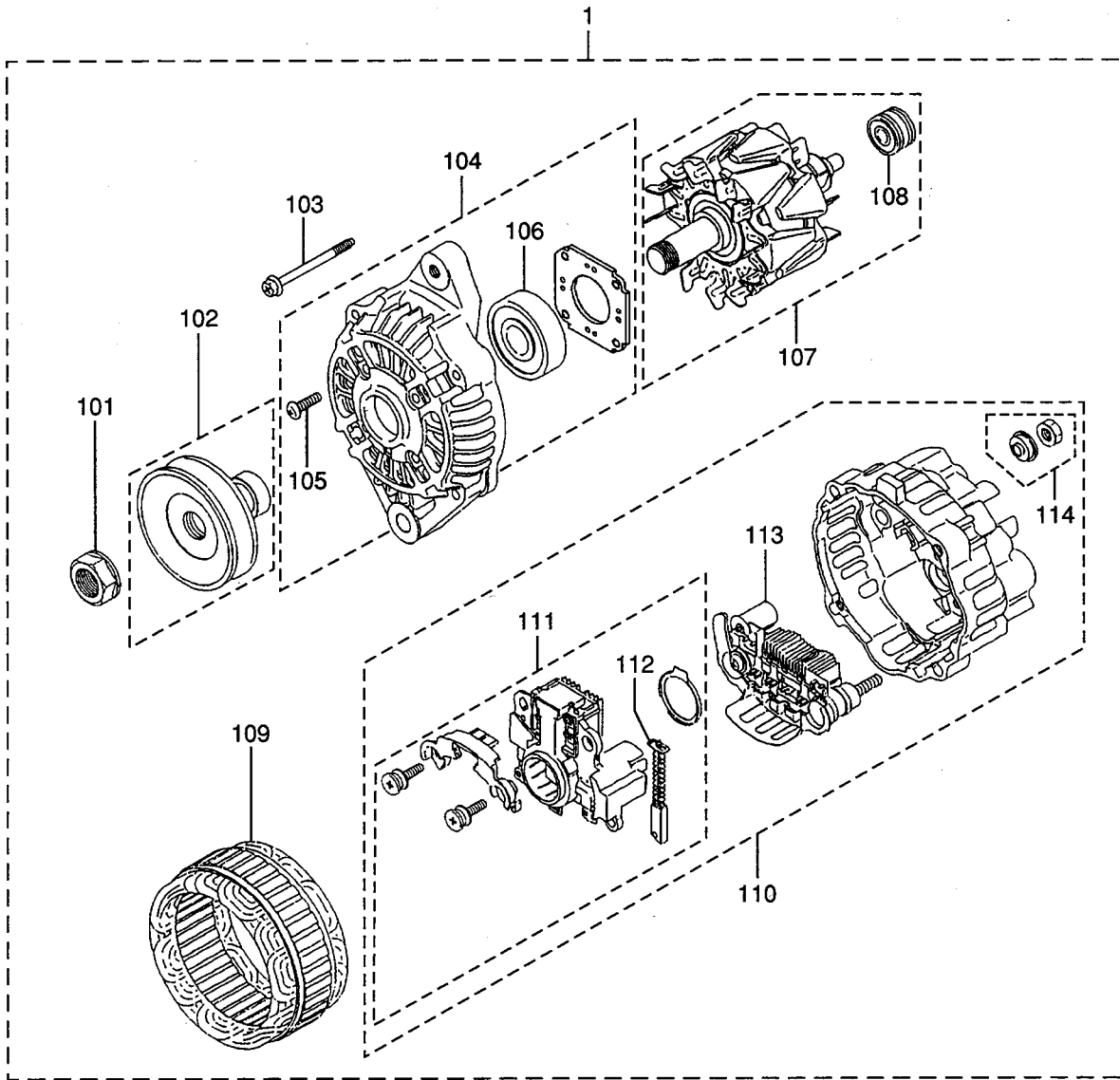


66-02

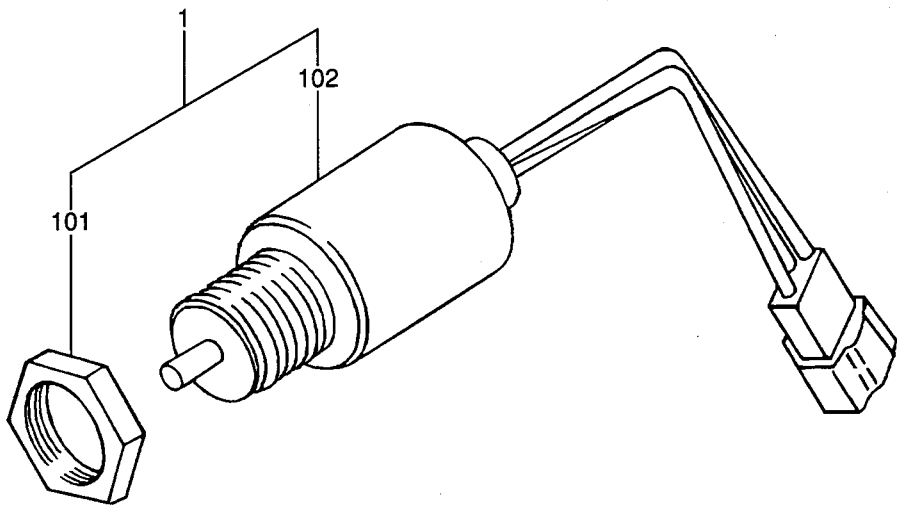
STARTER (12V-2.0KW)

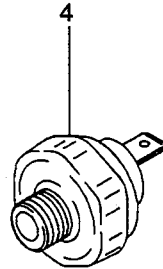
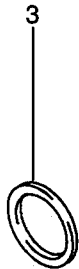
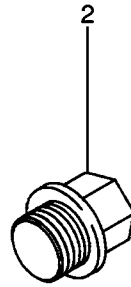
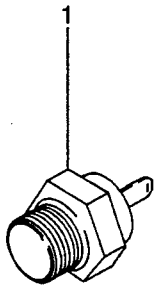
- 1. S4L-62AG2
- 2. S4L-62APH
- 3. S4L-62APH2
- 4. S4L2-62AG2
- 5. S4L2-62APH2

REF. NO.	PART NO.	RSC /EN PQG	PART NAME & DESCRIPTION	MODEL&QTY					APPLICABLE SERIAL NO.	MVR /R ORD		
				1	2	3	4	5				
1	31A66-00101		STARTER ASSY	MO08T70471 MEC	1	1	1	1	1			
101	M414X-04875		SCREW SET	47X11-02212	1	1	1	1	1			
102	M641X-B1671		BRACKET ASSY,FRONT	47X11-02201	1	1	1	1	1			
103	M863X-08871		LEVER ASSY,SET	47X11-02208	1	1	1	1	1			
104	M372X-03271		SWITCH ASSY	47X11-02322	1	1	1	1	1			
105	S409S-00008		BALL	47X11-02213	1	1	1	1	1			
106	M578X-29171		PACKING SET	47X11-02214	1	1	1	1	1			
107	M106X-43572		ARMATURE ASSY	47X11-02345	1	1	1	1	1			
108	M931X-01270		BEARING	47X11-02347	1	1	1	1	1			A
109	M901X-00371		BOLT SET	47X11-02221	1	1	1	1	1			A
110	M605X-98171		PINION SET	47X11-02209	1	1	1	1	1			
111	M385X-03771		STOPPER SET	47X11-02210	1	1	1	1	1			
112	M357X-91973		SHAFT ASSY,CLUTCH	47X11-02328	1	1	1	1	1			
113	M191X-69871		CLUTCH,OVER RUNNING	47X11-02316	1	1	1	1	1			
114	M135X-01581		GEAR ASSY,INTERNAL	47X11-02205	1	1	1	1	1			
115	M982X-38871		WASHER SET	47X11-02204	1	1	1	1	1			A
116	M357X-66485		SHAFT ASSY,GEAR	47X11-02203	1	1	1	1	1			
117	M230X-00471		GEAR ASSY	47X11-02207	3	3	3	3	3			
118	M800X-73873		YOKE ASSY	47X11-02323	1	1	1	1	1			
119	M648X-40771		BRUSH	47X11-02222	2	2	2	2	2			A
120	M649X-20471		HOLDER ASSY,BRUSH	47X11-02218	1	1	1	1	1			
121	M391X-04371		SPRING,BRUSH	47X11-02219	4	4	4	4	4			A
122	M642X-35771		BRACKET ASSY,REAR	47X11-02220	1	1	1	1	1			

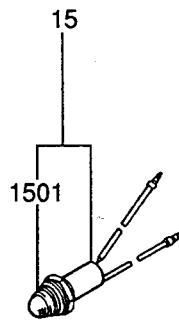
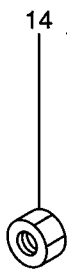
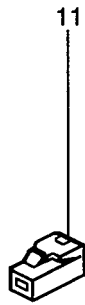
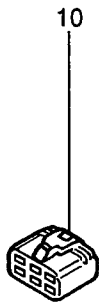
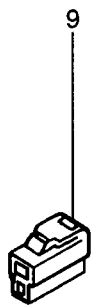
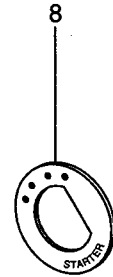
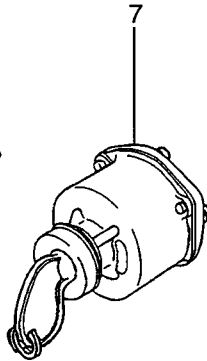
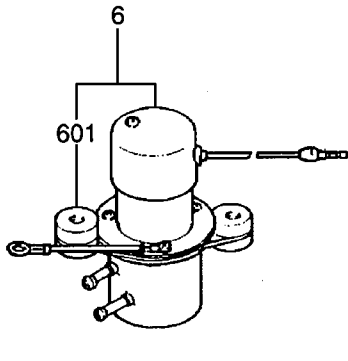
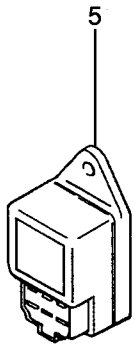
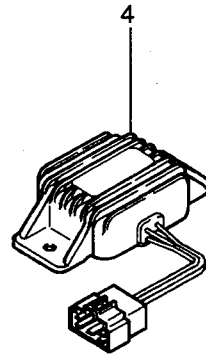
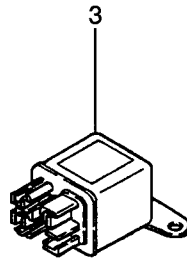
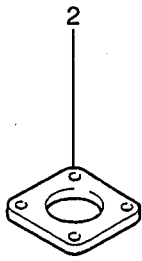
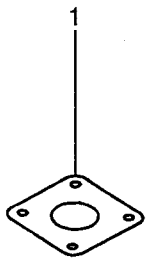


REF. NO.	PART NO.	RISC /EN PQG	PART NAME & DESCRIPTION	MODEL&QTY					APPLICABLE SERIAL NO.	MV /R ORD	
				1	2	3	4	5			
1	31A68-00402		ALTERNATOR ASSY	A007T02071C MEC	1	1	1	1	1		
101	A981X-20771		NUT SET	MM502565	1	1	1	1	1		
102	A628T-62170		PULLEY ASSY	MM502578	1	1	1	1	1		
103	A414X-19271		BOLT SET	MM502566	1	1	1	1	1		
104	A640X-67070		BRACKET ASSY,FRONT	47X11-02305	1	1	1	1	1		
105	A414X-21271		SCREW SET	MM502568	1	1	1	1	1		
106	A930X-94570		BEARING,FRONT	47X11-02296	1	1	1	1	1		
107	A880X-83770		ROTOR ASSY	47X11-02311	1	1	1	1	1		
108	S930P-63670		BEARING,REAR	MM502571	1	1	1	1	1		
109	A383X-56570		STATOR ASSY	47X11-02312	1	1	1	1	1		
110	A642X-A9970		BRACKET ASSY,REAR	47X11-02313	1	1	1	1	1		
111	A866X-44682		REGULATOR SET	47X11-02304	1	1	1	1	1		
112	A647X-50170		BRUSH SET	MM502577	2	2	2	2	2		
113	A860T-40670		RECTIFIER ASSY	MM502574	1	1	1	1	1		
114	A529X-07871		NUT SET	MM502575	1	1	1	1	1		





ACCESSORY



- 1. S4L-62AG2
- 2. S4L-62APH
- 3. S4L-62APH2
- 4. S4L2-62AG2
- 5. S4L2-62APH2

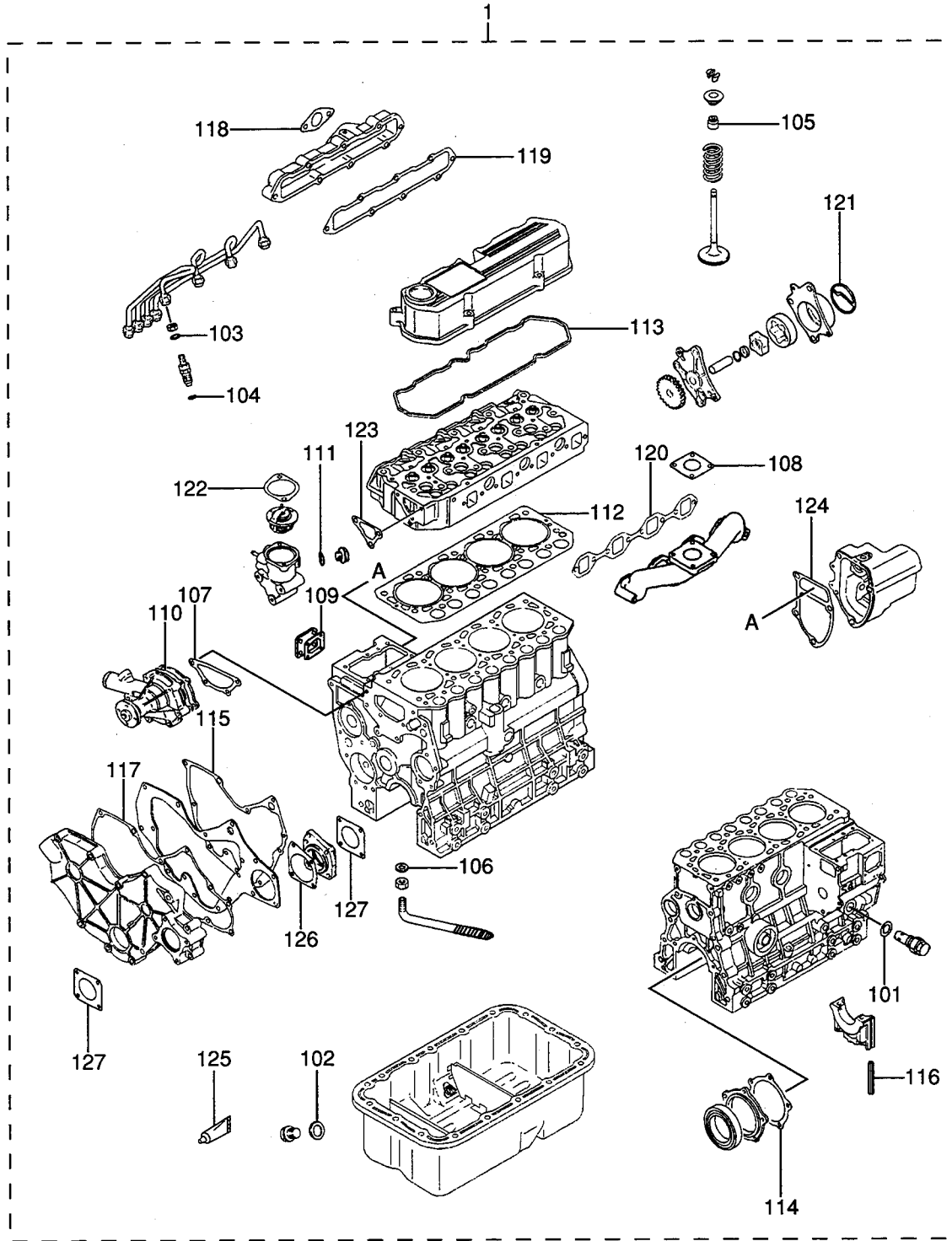
REF. NO.	PART NO.	RSC /EN PQG	PART NAME & DESCRIPTION	MODEL&QTY					APPLICABLE SERIAL NO.	MV /R ORD
				1	2	3	4	5		
1	30A30-00200		GASKET	1	1	1	1	1		
2	MM407366		FLANGE	1	1	1	1	1		
3	MM431-28201		RELAY, GLOW	2	2	2	2	2		
4	MM130767		SAFETY RELAY	1	1	1	1	1		
5	MM431762		TIMER, GLOW	1	1	1	1	1		
6	30A60-00200		PUMP ASSY, FUEL	1	1	1	1	1		
601	30A60-00500		PUMP ASSY, FUEL	2	2	2	2	2		
7	30890-05200		SWITCH, STARTER	1	1	1	1	1		
8	34490-01500		PLATE, CAUTION	1	1	1	1	1		
9	MB084014		CONNECTOR	3	3	3	3	3		
10	F8665-06100		CONNECTOR	2	2	2	2	2		
11	MM409660		CONNECTOR	1	1	1	1	1		
12	30A87-00600		CONNECTOR	1	1	1	1	1		
13	MS800516		CONNECTOR	4	4	4	4	4		
14	F2320-08000		NUT, JAM	1	1	1	1	1		A
15	MM201122		LAMP, PILOT	1	1	1	1	1		
1501	MM201106		BULB	1	1	1	1	1		A

94-01

OVERHAUL GASKET KIT
(FOR 1, 4)

- 1. S4L-62AG2
- 2. S4L-62APH
- 3. S4L-62APH2
- 4. S4L2-62AG2
- 5. S4L2-62APH2

REF. NO.	PART NO.	RSC /EN PQG	PART NAME & DESCRIPTION	MODEL&QTY					APPLICABLE SERIAL NO.	MV /R ORD
				1	2	3	4	5		
1	31A94-03020		GASKET KIT, (O/H)	1	.	.	1	.		
101	MD050317		GASKET,OIL DRAIN	1	.	.	1	.		
102	MD068355		GASKET,FUEL RETURN	4	.	.	4	.		
103	MD070717		GASKET,HOLDER	4	.	.	4	.		
104	MD115472		SEAL,VALVE STEM	8	.	.	8	.		
105	MF660036		GASKET	1	.	.	1	.		
106	MF660063		GASKET	4	.	.	4	.		
107	MM409326		GASKET,WATER PUMP	1	.	.	1	.		
108	30A30-00200		GASKET	1	.	.	1	.		
109	30A63-00101		GASKET,TIE-ROD COVER	1	.	.	1	.		
110	30H45-00101		GASKET,WATER PUMP	1	.	.	1	.		
111	30636-25901		GASKET	3	.	.	3	.		
112	31A01-33300		GASKET,CYLINDER HEAD	1	.	.	1	.		
113	31A04-33202		GASKET,ROCKER COVER	1	.	.	1	.		
114	31A07-11701		GASKET,OIL SEAL CASE	1	.	.	1	.		
115	31A07-11901		GASKET,FRONT PLATE	1	.	.	1	.		
116	31A07-12200		SEAL,SIDE	4	.	.	4	.		
117	31A11-11101		GASKET,GEAR CASE	1	.	.	1	.		
118	31A30-00801		GASKET,INLET PIPE	1	.	.	1	.		
119	31A30-10902		GASKET,INLET COVER	1	.	.	1	.		
120	31A32-01200		GASKET,EXHAUST MANF	1	.	.	1	.		
121	31A35-02300		PACKING,BODY	1	.	.	1	.		
122	31A46-01200		GASKET,THERMOSTAT	1	.	.	1	.		
123	31A46-10101		GASKET,THERMO CASE	1	.	.	1	.		
124	31A63-12201		GASKET,GOVERNOR CASE	1	.	.	1	.		
125	32A91-05100		GASKET,LIQUID	1	.	.	1	.		
126	34340-00700		GASKET	1	.	.	1	.		
127	31A11-05201		GASKET,HOUSING	1	.	.	1	.		
128	30A11-00101		GASKET,O/PUMP COVER	2	.	.	2	.		



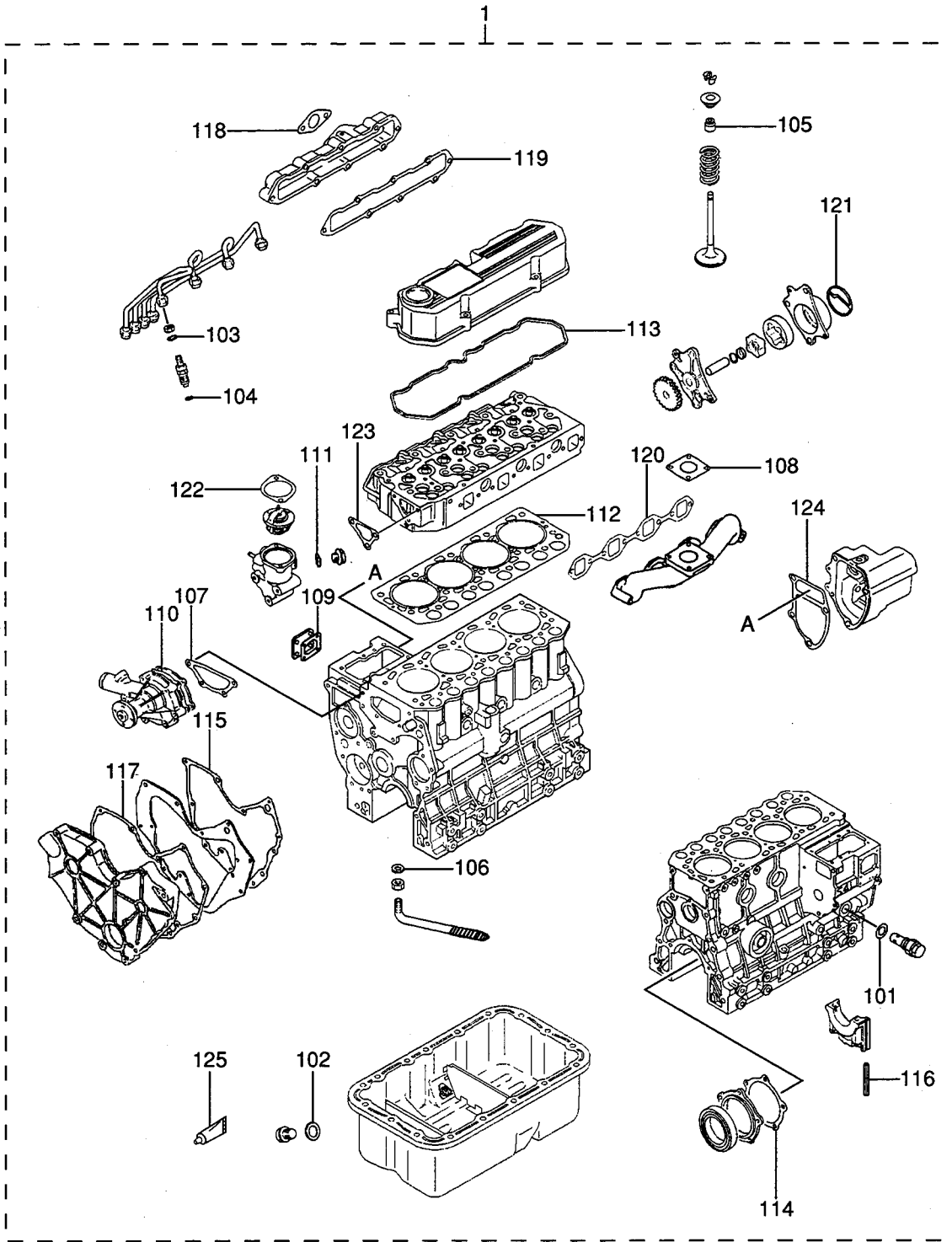
94-02

OVERHAUL GASKET KIT
(FOR 2)

- 1. S4L-62AG2
- 2. S4L-62APH
- 3. S4L-62APH2
- 4. S4L2-62AG2
- 5. S4L2-62APH2

REF. NO.	PART NO.	RSC /EN PQG	PART NAME & DESCRIPTION	MODEL&QTY					APPLICABLE SERIAL NO. FROM@--@UPTO	MV /R ORD
				1	2	3	4	5		
1	31A94-02090		GASKET KIT, (O/H)	.	1	.	.	.		
101	34340-00700		GASKET	.	1	.	.	.		A
102	MD050317		GASKET,OIL DRAIN	.	1	.	.	.		A
103	MD068355		GASKET,FUEL RETURN	.	4	.	.	.		A
104	MD070717		GASKET,HOLDER	.	4	.	.	.		A
105	MD115472		SEAL,VALVE STEM	.	8	.	.	.		A
106	MF660036		GASKET	.	1	.	.	.		A
107	MM409326		GASKET,WATER PUMP	.	1	.	.	.		A
108	30A30-00200		GASKET	.	1	.	.	.		A
109	30A63-00101		GASKET,TIE-ROD COVER	.	1	.	.	.		
110	30H45-00101		GASKET,WATER PUMP	.	1	.	.	.		
111	30636-25901		GASKET	.	3	.	.	.		A
112	31A01-33300		GASKET,CYLINDER HEAD	.	1	.	.	.		A
113	31A04-33202		GASKET,ROCKER COVER	.	1	.	.	.		
114	31A07-11701		GASKET,OIL SEAL CASE	.	1	.	.	.		
115	31A07-11901		GASKET,FRONT PLATE	.	1	.	.	.		
116	31A07-12200		SEAL,SIDE	.	4	.	.	.		
117	31A11-11101		GASKET,GEAR CASE	.	1	.	.	.		
118	31A30-00801		GASKET,INLET PIPE	.	1	.	.	.		
119	31A30-10902		GASKET,INLET COVER	.	1	.	.	.		
120	31A32-01200		GASKET,EXHAUST MANF	.	1	.	.	.		
121	31A35-02300		PACKING,BODY	.	1	.	.	.		
122	31A46-01200		GASKET,THERMOSTAT	.	1	.	.	.		
123	31A46-10101		GASKET,THERMO CASE	.	1	.	.	.		
124	31A63-12201		GASKET,GOVERNOR CASE	.	1	.	.	.		
125	32A91-05100		GASKET,LIQUID	.	1	.	.	.		
126	31A11-05201		GASKET,HOUSING	.	1	.	.	.		
127	30A11-00101		GASKET,O/PUMP COVER	.	2	.	.	.		

OVERHAUL GASKET KIT
(FOR 3, 5)



94-03

OVERHAUL GASKET KIT
(FOR 3, 5)

- 1. S4L-62AG2
- 2. S4L-62APH
- 3. S4L-62APH2
- 4. S4L2-62AG2
- 5. S4L2-62APH2

REF. NO.	PART NO.	RSC /EN PQG	PART NAME & DESCRIPTION	MODEL&QTY					APPLICABLE SERIAL NO.	MV /R ORD
				1	2	3	4	5		
				FROM@--@UPTORD						
1	31A94-02060		GASKET KIT, (O/H)	.	.	1	.	1		
101	34340-00700		GASKET	.	.	1	.	1		
102	MD050317		GASKET,OIL DRAIN	.	.	1	.	1		
103	MD068355		GASKET,FUEL RETURN	.	.	4	.	4		
104	MD070717		GASKET,HOLDER	.	.	4	.	4		
105	MD115472		SEAL,VALVE STEM	.	.	8	.	8		
106	MF660036		GASKET	.	.	1	.	1		
107	MM409326		GASKET,WATER PUMP	.	.	1	.	1		
108	30A30-00200		GASKET	.	.	1	.	1		
109	30A63-00101		GASKET,TIE-ROD COVER	.	.	1	.	1		
110	30H45-00101		GASKET,WATER PUMP	.	.	1	.	1		
111	30636-25901		GASKET	.	.	3	.	3		
112	31A01-33300		GASKET,CYLINDER HEAD	.	.	1	.	1		
113	31A04-33202		GASKET,ROCKER COVER	.	.	1	.	1		
114	31A07-11701		GASKET,OIL SEAL CASE	.	.	1	.	1		
115	31A07-11901		GASKET,FRONT PLATE	.	.	1	.	1		
116	31A07-12200		SEAL,SIDE	.	.	4	.	4		
117	31A11-11200		GASKET,GEAR CASE	.	.	1	.	1		
118	31A30-00801		GASKET,INLET PIPE	.	.	1	.	1		
119	31A30-10902		GASKET,INLET COVER	.	.	1	.	1		
120	31A32-01200		GASKET,EXHAUST MANF	.	.	1	.	1		
121	31A35-02300		PACKING,BODY	.	.	1	.	1		
122	31A46-01200		GASKET,THERMOSTAT	.	.	1	.	1		
123	31A46-10101		GASKET,THERMO CASE	.	.	1	.	1		
124	31A63-12201		GASKET,GOVERNOR CASE	.	.	1	.	1		
125	32A91-05100		GASKET,LIQUID	.	.	1	.	1		

NUMERICAL PARTS INDEX

PART NO.	GRP NO.	PAGE	REF. NO.	PART NO.	GRP NO.	PAGE	REF. NO.	PART NO.	GRP NO.	PAGE	REF. NO.
A383X-5657068		55	109	F1825-0602561-01		35	14	MD070717	61-01	35	1
A414X-1927168		55	103	0804545		33	3		94-01	63	103
2127168		55	105	0806045		33	4		94-02	65	104
A529X-0787168		55	114	F2320-0800092		61	14		94-03	67	104
A628T-6217068		55	102	F2325-0800004-01		7	1004	MD115472	04-01	7	8
A640X-6707068		55	104	F2846-0500007-01		11	17		94-01	63	104
A642X-A997068		55	110	F2850-0302063-01		45	101		94-02	65	105
A647X-5017068		55	112		63-02	49	101		94-03	67	105
A860T-4067068		55	113	F3150-0101063-01		45	102	MD703856	04-01	7	12
A866X-4468268		55	111		63-02	49	102	MD712517	23	25	5
A880X-8377068		55	107	F8000-0800007-01		11	1401	MD952231	17	23	29
A930X-9457068		55	106	F8665-0610092		61	10	MF140026	66-01	51	7
A981X-2077168		55	101	K8712630	63-01	45	103	MF140227	45	33	602
F1035-0501004-01		7	1001		63-01	45	15	MF401936	30	27	9
0802007-02		13	4		63-02	49	103	MF430004	63-01	45	104
30		27	10		63-02	49	16		63-02	49	104
61-01		35	23	MB084014	92	61	9	MF430005	11-02	17	13
0802235		29	2	MD000245	01-01	3	201	MF430006	66-01	51	3
0804511-01		15	6		01-01	3	401		66-01	51	8
11-02		17	6		01-02	5	201	MF430126	17	23	25
63-01		45	9		01-02	5	401	MF430725	63-01	45	105
63-02		49	9	MD000269	07-02	13	5		63-01	45	20
0805530		27	11	MD000425	04-01	7	13		63-02	49	105
0807011-02		17	15	MD001370	45	33	601		63-02	49	20
1202507-01		11	20	MD001521	66-01	51	6	MF430729	36	31	101
F1805-0601245		33	12	MD006704	17	23	1401	MF450006	66-01	51	10
61-01		35	31		17	23	1501	MF450010	17	23	23
0601863-01		45	11	MD008762	11-01	15	7	MF450405	11-02	17	16
63-02		49	11		11-02	17	7		63-01	45	106
0603045		33	101	MD008784	04-02	9	4		63-01	45	19
63-01		45	18	MD016483	04-01	7	7		63-02	49	106
63-02		49	18	MD021105	17	23	1402		63-02	49	19
0801604-01		7	15		17	23	1502	MF450406	66-01	51	4
04-02		9	8	MD021204	04-01	7	1008		66-01	51	9
11-01		15	3	MD024256	07-01	11	18	MF450410	17	23	24
11-02		17	3	MD024812	17	23	2701	MF472404	07-01	11	12
13-01		19	2		17	23	2801	MF476018	04-01	7	14
13-02		21	2	MD041704	45	33	13	MF476215	04-02	9	6
61-01		35	30	MD050316	13-01	19	101		17	23	22
0802030		27	6		13-02	21	101	MF520002	63-01	45	21
0803011-02		17	12	MD050317	13-01	19	102		63-02	49	21
0803511-02		17	14		13-02	21	102	MF522010	04-01	7	1002
30		27	5		94-01	63	101	MF650102	63-01	47	24
0804004-02		9	3		94-02	65	102	MF660031	63-01	45	1601
0806545		33	8		94-03	67	102		63-02	49	1201
1002001-01		3	9	MD068353	61-01	35	3	MF660036	36	31	2
01-02		5	9	MD068355	61-01	35	2		94-01	63	105
1002566-01		51	1		94-01	63	102		94-02	65	106
1202807-02		13	15		94-02	65	103		94-03	67	106
1205007-02		13	14		94-03	67	103	MF660063	63-01	47	25

NUMERICAL PARTS INDEX

PART NO.	GRP NO.	PAGE	REF. NO.	PART NO.	GRP NO.	PAGE	REF. NO.	PART NO.	GRP NO.	PAGE	REF. NO.
MF660063	94-01	63	106	MM409660	92	61	11	M357X-66485	66-02	53	116
MF665511	07-01	11	11	MM409671	87	57	101	91973	66-02	53	112
MF665532	07-01	11	5	MM409686	63-01	45	13	M372X-03271	66-02	53	104
MF665533	07-01	11	6		63-02	49	14	M385X-03771	66-02	53	111
MF665537	07-01	11	19	MM413196	45	33	9	M391X-04371	66-02	53	121
MF665538	01-01	3	202	MM413362	63-01	45	14	M414X-04875	66-02	53	101
	01-02	5	202		63-02	49	15	M578X-29171	66-02	53	106
	01-02	5	402	MM430176	36	31	1	M605X-98171	66-02	53	110
MK661-14000	61-01	35	24	MM430613	07-01	11	4	M641X-B1671	66-02	53	102
MK992-00001	63-01	45	6	MM430614	61-01	35	13	M642X-35771	66-02	53	122
	63-02	49	6	MM430703	61-01	35	12	M648X-40771	66-02	53	119
MK993-00240	63-01	45	7	MM431-28201	92	61	3	M649X-20471	66-02	53	120
	63-02	49	7	53801	07-02	13	11	M800X-73873	66-02	53	118
MM130767	92	61	4	MM431762	92	61	5	M863X-08871	66-02	53	103
MM201106	92	61	1501	MM432104	90	59	1	M901X-00371	66-02	53	109
MM201122	92	61	15	MM433306	04-01	7	6	M931X-01270	66-02	53	108
MM316248	90	59	2	MM433614	63-01	45	8	M982X-38871	66-02	53	115
MM331-31701	63-01	45	107		63-02	49	8	S409S-00008	66-02	53	105
	63-02	49	107	MM433675	63-02	49	109	S930P-63670	68	55	108
MM400380	04-02	9	11	MM433720	63-01	45	109	04826-22000	07-01	11	301
MM400880	61-01	35	29	MM433921	17	23	7	22500	01-01	3	402
MM401205	11-02	17	10	MM433922	17	23	8	23500	07-01	11	302
MM402737	04-02	9	9	MM433923	17	23	9	05534-16000	07-02	13	16
MM407366	92	61	2	MM435190	61-01	35	27	09006-80020	61-03-01	39	116
MM407460	45	33	10	MM435-86701	45	33	11		61-03-02	41	116
MM408245	07-02	13	13	94101	61-02	37	1		61-03-03	43	116
MM408470	01-01	3	8	MM437140	61-01	35	26	09011-05070	61-03-01	39	101
	01-02	5	8	MM437305	17	23	16		61-03-02	41	101
MM409031	61-01	35	22	MM437313	07-02	13	6		61-03-03	43	101
MM409036	61-01	35	18	MM437884	07-02	13	7	09013-00450	61-03-01	39	102
MM409037	61-01	35	19	MM437885	07-02	13	8	10520	61-03-02	41	102
MM409038	61-01	35	20	MM437886	07-02	13	9		61-03-03	43	102
MM409039	61-01	35	21	MS471104	07-01	11	8	60540	61-03-02	41	103
MM409066	61-01	35	32	MS471105	07-01	11	9		61-03-03	43	103
MM409121	61-01	35	28	MS471110	07-01	11	10	61100	61-03-01	39	103
MM409167	63-01	45	1602	MS602047	61-01	35	3201	70130	61-03-01	39	104
	63-02	49	1202	MS603014	45	33	901		61-03-02	41	104
MM409168	63-01	45	1603	MS604016	61-01	35	1702		61-03-03	43	104
	63-02	49	1203	MS604040	61-01	35	1703	09014-02610	61-03-02	41	105
MM409302	45	33	1	MS660163	61-01	35	3202		61-03-03	43	105
MM409-31301	45	33	603	MS660164	45	33	902	02700	61-03-01	39	105
MM409314	45	33	102	MS660169	61-01	35	1704	09015-05550	61-03-01	39	106
MM409326	45	33	108	MS661140	01-01	3	5		61-03-02	41	106
	94-01	63	107		01-02	5	5		61-03-03	43	106
	94-02	65	107		07-01	11	7	09016-10210	61-03-01	39	107
	94-03	67	107	MS800516	92	61	13		61-03-02	41	107
MM409327	45	33	109	M106X-43572	66-02	53	107		61-03-03	43	107
MM409427	66-01	51	2	M135X-01581	66-02	53	114	30082	61-03-01	39	108
MM409642	63-02	49	1204	M191X-69871	66-02	53	113		61-03-02	41	108
MM409645	07-01	11	13	M230X-00471	66-02	53	117		61-03-03	43	108

NUMERICAL PARTS INDEX

PART NO.	GRP NO.	PAGE	REF. NO.	PART NO.	GRP NO.	PAGE	REF. NO.	PART NO.	GRP NO.	PAGE	REF. NO.	
09016-40170	61-03-01	39	109	30A30-00200	94-03	67	108	31A04-00400	04-01	7	2	
	61-03-02	41	109	30A40-00103	36	31	5	00500	04-01	7	4	
	61-03-03	43	109	30A60-00200	92	61	6	00700	04-01	7	9	
09017-00170	61-03-01	39	110	00500	92	61	601	01301	04-01	7	5	
	61-03-02	41	110	30A63-00101	63-01	45	17	11024	04-01	7	1003	
	61-03-03	43	110		63-02	49	17	20031	04-02	9	1	
09018-30050	61-03-01	39	114		94-01	63	109	20200	04-01	7	3	
	61-03-02	41	114		94-02	65	109	21010	04-01	7	1007	
	61-03-03	43	114		94-03	67	109	30043	04-01	7	10	
09021-00440	61-03-01	39	111	30A87-00600	92	61	12	30100	04-01	7	1	
	61-03-02	41	111	10041	87	57	1	33202	04-02	9	2	
	61-03-03	43	111	20401	87	57	102		94-01	63	113	
09024-40180	61-03-01	39	118	30H45-00101	45	33	2		94-02	65	113	
	61-03-02	41	118		94-01	63	110		94-03	67	113	
	61-03-03	43	118		94-02	65	110	34100	04-01	7	1010	
09030-10060	61-03-01	39	112		94-03	67	110	34300	04-01	7	1011	
	61-03-02	41	112	30L07-00700	07-01	11	16	31A05-00201	04-02	9	5	
	61-03-03	43	112	30L63-00020	63-01	45	110	01300	04-02	9	10	
09046-70030	61-03-01	39	115		63-02	49	110	31A07-00801	07-01	11	303	
	61-03-02	41	115	00600	63-01	45	111	02300	07-02	13	3	
	61-03-03	43	115		63-02	49	111	03100	07-01	11	304	
09311-03840	61-02	37	101	30405-31402	04-02	9	7	04401	07-02	13	12	
09312-10380	61-02	37	104	30636-25901	90	59	3	11601	07-02	13	1	
	70310	61-02	37	103	94-01	63	111	11701	07-02	13	2	
09316-41351	61-02	37	107		94-02	65	111		94-01	63	114	
09317-40070	61-02	37	105		94-03	67	111		94-02	65	114	
	51810	61-02	37	102	30890-05200	92	61	7	94-03	67	114	
	51830	61-02	37	102	31A01-02500	01-01	3	205	11901	11-01	15	2
	51850	61-02	37	102		01-01	3	405	11-02	17	2	
	51870	61-02	37	102		01-02	5	205	94-01	63	115	
	51890	61-02	37	102		01-02	5	405	94-02	65	115	
	51910	61-02	37	102	02600	01-01	3	206	94-03	67	115	
	51930	61-02	37	102		01-01	3	406	12200	07-01	11	15
	51950	61-02	37	102		01-02	5	206	94-01	63	116	
	51970	61-02	37	102		01-02	5	406	94-02	65	116	
	51990	61-02	37	102	11100	01-01	3	6	94-03	67	116	
09340-05060	61-02	37	106		01-02	5	6	13021	07-01	11	2	
09450-37480	61-03-02	41	122	13010	01-02	5	3	52021	07-01	11	1	
	37490	61-03-03	43	122	21060	01-01	3	1	31A11-00500	11-01	15	4
	37850	61-03-01	39	122	31050	01-01	3	3	00802	11-02	17	4
30A11-00101	11-02	17	11	33300	01-01	3	7	02100	11-02	17	1	
	94-01	63	128		01-02	5	7	02200	11-01	15	1	
	94-02	65	127		94-01	63	112	05101	11-02	17	8	
30A12-01101	07-02	13	10		94-02	65	112	05201	11-02	17	9	
30A19-00010	17	23	17		94-03	67	112		94-01	63	127	
	00020	17	23	18	51040	01-02	5	1	94-02	65	126	
	00030	17	23	19	31A03-01101	01-01	3	208	11101	11-02	17	5
30A30-00200	92	61	1		01400	01-01	3	408	94-01	63	117	
	94-01	63	108		01500	01-02	5	208	94-02	65	117	
	94-02	65	108		01900	01-02	5	408	11200	11-01	15	5

NUMERICAL PARTS INDEX

PART NO.	GRP NO.	PAGE	REF. NO.	PART NO.	GRP NO.	PAGE	REF. NO.	PART NO.	GRP NO.	PAGE	REF. NO.
31A11-11200	94-03	67	117	31A46-01200	45	33	607	31A63-07900	63-02	49	118
31A13-01021	113-01	19	1		94-01	63	122	08100	63-01	45	22
	02050	21	1		94-02	65	122	08800	63-01	45	1604
31A17-00010	1017	23	10		94-03	67	122	10305	63-01	45	3
	00020	23	11	10101	45	33	7		63-02	49	3
	00030	23	12		94-01	63	123	11061	63-02	49	5
	07100	23	4		94-02	65	123	11301	63-01	45	122
	07200	23	5		94-03	67	123		63-02	49	119
	07300	23	6	31A61-01500	61-01	35	1701	12201	63-01	45	2
	10602	23	13		02500	35	16		63-02	49	2
	11100	23	1		04100	35	4		94-01	63	124
	11200	23	2		04200	35	5		94-02	65	124
	11300	23	3		04300	35	6		94-03	67	124
31A19-01023	17	23	15		04400	35	7	15200	63-01	45	123
	10024	23	14		07100	35	8		63-02	49	120
31A20-00102	17	23	20		07200	35	9	15500	63-02	49	121
	00200	23	21		07300	35	10	20201	63-02	49	4
	02400	23	26		07400	35	11	22100	63-02	49	122
31A21-01040	17	23	27		12600	35	15	25101	63-01	45	4
	01080	23	28		13400	35	17	31A65-00100	61-01	35	25
31A23-00051	107-01	11	14	31A63-00020	63-02	49	12	04070	61-03-02	41	1
	03020	25	3		00060	45	12	04080	61-03-03	43	1
	03100	25	2		63-02	49	13	05060	61-03-01	39	1
	03300	23	30		00500	45	124	11200	04-01	7	11
	03400	25	1		63-02	49	123	31A66-00101	66-02	53	1
	03500	25	4		01010	45	117	04101	66-01	51	13
31A30-00300	30	27	3		63-02	49	117	31A68-00402	68	55	1
	00801	27	4		01030	45	16	02100	66-01	51	5
	94-01	63	118		01800	45	113	20300	66-01	51	11
	94-02	65	118		63-02	49	113	31A90-00300	90	59	4
	94-03	67	118		02030	45	5	31A94-02060	94-03	67	1
	10902	27	2		02060	49	1	02090	94-02	65	1
	94-01	63	119		02070	45	1	03020	94-01	63	1
	94-02	65	119		02300	45	10	32A04-02401	04-01	7	1006
	94-03	67	119		63-02	49	10	32A36-05012	36	31	3
	20010	27	1		02600	45	114	32A66-03100	66-01	51	12
31A32-00402	30	27	7		63-02	49	114	32A91-05100	94-01	63	125
	01200	27	8		02700	45	115		94-02	65	125
	94-01	63	120		63-02	49	115		94-03	67	125
	94-02	65	120		05300	45	116	32C04-04500	04-01	7	1012
	94-03	67	120		63-02	49	116	06100	04-01	7	1013
31A35-02300	35	29	101		05601	45	112	34340-00700	36	31	4
	94-01	63	121		63-02	49	112		94-01	63	126
	94-02	65	121		06400	45	125		94-02	65	101
	94-03	67	121		63-02	49	124		94-03	67	101
	30010	29	1		06900	47	23	34490-01500	92	61	8
31A42-00300	36	31	6		07100	45	118	90802-20150	61-03-01	39	113
31A45-20700	45	33	5		07200	45	119		61-03-02	41	113
31A46-00062	45	33	604		07300	45	120		61-03-03	43	113
	01060	33	6		07900	45	121	94901-81020	61-03-01	39	120

NUMERICAL PARTS INDEX

PART NO.	GRP NO.	PAGE	REF. NO.	PART NO.	GRP NO.	PAGE	REF. NO.	PART NO.	GRP NO.	PAGE	REF. NO.
94901-81020	61-03-02	41	120								
	61-03-03	43	120								
94903-00030	61-03-01	39	123								
	61-03-02	41	123								
	61-03-03	43	123								
94904-80800	61-03-01	39	117								
	61-03-02	41	117								
	61-03-03	43	117								
94918-00310	61-03-01	39	119								
	61-03-02	41	119								
	61-03-03	43	119								

TABLE OF BOLT,W/WASHER

BOLT,W/WASHER	BOLT/WASHER	BOLT,W/WASHER	BOLT/WASHER	BOLT,W/WASHER	BOLT/WASHER
F1805-06010	F1035-06010 F2515-06000	F1805-06035	F1035-06035 F2515-06000	F1805-08018	F1035-08018 F2515-08000
F1805-06012	F1035-06012 F2515-06000	F1805-06040	F1035-06040 F2515-06000	F1805-08020	F1035-08020 F2515-08000
F1805-06014	F1035-06014 F2515-06000	F1805-06045	F1035-06045 F2515-06000	F1805-08022	F1035-08022 F2515-08000
F1805-06016	F1035-06016 F2515-06000	F1805-06055	F1035-06055 F2515-06000	F1805-08025	F1035-08025 F2515-08000
F1805-06018	F1035-06018 F2515-06000	F1805-06060	F1035-06060 F2515-06000	F1805-08030	F1035-08030 F2515-08000
F1805-06020	F1035-06020 F2515-06000	F1805-08012	F1035-08012 F2515-08000	F1805-08035	F1035-08035 F2515-08000
F1805-06025	F1035-06025 F2515-06000	F1805-08014	F1035-08014 F2515-08000	F1805-08040	F1035-08040 F2515-08000
F1805-06030	F1035-06030 F2515-06000	F1805-08016	F1035-08016 F2515-08000	F1805-08045	F1035-08045 F2515-08000

TABLE OF BOLT,W/WASHER

BOLT,W/WASHER	BOLT/WASHER	BOLT,W/WASHER	BOLT/WASHER	BOLT,W/WASHER	BOLT/WASHER
F1805-08050	F1035-08050 F2515-08000	F1805-10018	F1035-10018 F2515-10000	F1805-10050	F1035-10050 F2515-10000
F1805-08055	F1035-08055 F2515-08000	F1805-10020	F1035-10020 F2515-10000	F1805-10055	F1035-10055 F2515-10000
F1805-08060	F1035-08060 F2515-08000	F1805-10022	F1035-10022 F2515-10000	F1805-10060	F1035-10060 F2515-10000
F1805-08065	F1035-08065 F2515-08000	F1805-10025	F1035-10025 F2515-10000	F1805-10065	F1035-10065 F2515-10000
F1805-08070	F1035-08070 F2515-08000	F1805-10030	F1035-10030 F2515-10000	F1805-10070	F1035-10070 F2515-10000
F1805-08075	F1035-08075 F2515-08000	F1805-10035	F1035-10035 F2515-10000	F1805-10085	F1035-10085 F2515-10000
F1805-10014	F1035-10014 F2515-10000	F1805-10040	F1035-10040 F2515-10000	F1805-12016	F1035-12016 F2515-12000
F1805-10016	F1035-10016 F2515-10000	F1805-10045	F1035-10045 F2515-10000	F1805-12020	F1035-12020 F2515-12000

TABLE OF BOLT,W/WASHER

BOLT,W/WASHER	BOLT/WASHER	BOLT,W/WASHER	BOLT/WASHER	BOLT,W/WASHER	BOLT/WASHER
F1805-12025	F1035-12025 F2515-12000	F1805-12065	F1035-12065 F2515-12000	F1825-06010	F1035-06010 F2515-06000 F2500-06000
F1805-12030	F1035-12030 F2515-12000	F1805-12085	F1035-12085 F2515-12000	F1825-06012	F1035-06012 F2515-06000 F2500-06000
F1805-12035	F1035-12035 F2515-12000	F1805-14035	F1035-14035 F2515-14000	F1825-06014	F1035-06014 F2515-06000 F2500-06000
F1805-12040	F1035-12040 F2515-12000	F1805-14045	F1035-14045 F2515-14000	F1825-06016	F1035-06016 F2515-06000 F2500-06000
F1805-12045	F1035-12045 F2515-12000			F1825-06020	F1035-06020 F2515-06000 F2500-06000
F1805-12050	F1035-12050 F2515-12000			F1825-06025	F1035-06025 F2515-06000 F2500-06000
F1805-12055	F1035-12055 F2515-12000				
F1805-12060	F1035-12060 F2515-12000				

TABLE OF BOLT,W/WASHER

BOLT,W/WASHER	BOLT/WASHER	BOLT,W/WASHER	BOLT/WASHER	BOLT,W/WASHER	BOLT/WASHER
F1825-06030	F1035-06030 F2515-06000 F2500-06000	F1825-08025	F1035-08025 F2515-08000 F2500-08000	F1825-08050	F1035-08050 F2515-08000 F2500-08000
F1825-06035	F1035-06035 F2515-06000 F2500-06000	F1825-08030	F1035-08030 F2515-08000 F2500-08000	F1825-08055	F1035-08055 F2515-08000 F2500-08000
F1825-06055	F1035-06055 F2515-06000 F2500-06000	F1825-08035	F1035-08035 F2515-08000 F2500-08000	F1825-08085	F1035-08085 F2515-08000 F2500-08000
F1825-08012	F1035-08012 F2515-08000 F2500-08000	F1825-08038	F1035-08038 F2515-08000 F2500-08000	F1825-10014	F1035-10014 F2515-10000 F2500-10000
F1825-08016	F1035-08016 F2515-08000 F2500-08000	F1825-08040	F1035-08040 F2515-08000 F2500-08000	F1825-10016	F1035-10016 F2515-10000 F2500-10000
F1825-08020	F1035-08020 F2515-08000 F2500-08000	F1825-08045	F1035-08045 F2515-08000 F2500-08000	F1825-10020	F1035-10020 F2515-10000 F2500-10000

TABLE OF BOLT,W/WASHER

BOLT,W/WASHER	BOLT/WASHER	BOLT,W/WASHER	BOLT/WASHER	BOLT,W/WASHER	BOLT/WASHER
F1825-10025	F1035-10025 F2515-10000 F2500-10000	F1825-12025	F1035-12025 F2515-12000 F2500-12000	F2005-10016	F1155-10016 F2515-10000
F1825-10030	F1035-10030 F2515-10000 F2500-10000	F1825-12030	F1035-12030 F2515-12000 F2500-12000	F2005-10020	F1155-10020 F2515-10000
F1825-10035	F1035-10035 F2515-10000 F2500-10000	F1825-12040	F1035-12040 F2515-12000 F2500-12000	F2005-10025	F1155-10025 F2515-10000
F1825-10040	F1035-10040 F2515-10000 F2500-10000			F2005-10030	F1155-10030 F2515-10000
F1825-10080	F1035-10080 F2515-10000 F2500-10000			F2005-10035	F1155-10035 F2515-10000
F1825-12020	F1035-12020 F2515-12000 F2500-12000			F2005-10040	F1155-10040 F2515-10000
				F2005-10045	F1155-10045 F2515-10000
				F2005-10050	F1155-10050 F2515-10000

TABLE OF BOLT,W/WASHER

BOLT,W/WASHER	BOLT/WASHER	BOLT,W/WASHER	BOLT/WASHER	BOLT,W/WASHER	BOLT/WASHER
F2005-10055	F1155-10055 F2515-10000	F2005-12040	F1155-12040 F2515-12000	F2015-10020	F1155-10020 F2515-10000 F2500-10000
F2005-10060	F1155-10060 F2515-10000	F2005-12045	F1155-12045 F2515-12000	F2015-10025	F1155-10025 F2515-10000 F2500-10000
F2005-10065	F1155-10065 F2515-10000	F2005-12050	F1155-12050 F2515-12000	F2015-10030	F1155-10030 F2515-10000 F2500-10000
F2005-10070	F1155-10070 F2515-10000	F2005-12055	F1155-12055 F2515-12000	F2015-10035	F1155-10035 F2515-10000 F2500-10000
F2005-12020	F1155-12020 F2515-12000	F2005-12065	F1155-12065 F2515-12000	F2015-10040	F1155-10040 F2515-10000 F2500-10000
F2005-12025	F1155-12025 F2515-12000			F2015-10050	F1155-10050 F2515-10000 F2500-10000
F2005-12030	F1155-12030 F2515-12000				
F2005-12035	F1155-12035 F2515-12000				

TABLE OF BOLT,W/WASHER

BOLT,W/WASHER	BOLT/WASHER	BOLT,W/WASHER	BOLT/WASHER	BOLT,W/WASHER	BOLT/WASHER
F2015-10055	F1155-10055 F2515-10000 F2500-10000				
F2015-10060	F1155-10060 F2515-10000 F2500-10000				
F2015-12025	F1155-12025 F2515-12000 F2500-12000				
F2015-12030	F1155-12030 F2515-12000 F2500-12000				

