

MITSUBISHI DIESEL ENGINE

S6S-DT

for HYUNDAI (FORKLIFT TRUCK)

November 2004

MITSUBISHI GENUINE PARTS

“MITSUBISHI GENUINE PARTS” should be used exclusively for servicing your Mitsubishi engine.

“MITSUBISHI GENUINE PARTS” are superior and reliable because they have been produced under the excellent quality-control system, and have passed the strict inspections.

Imitation parts are not reliable from the viewpoints of their material and manufacturing method which are entirely incomparable with those of genuine parts.

A large assortment of “MITSUBISHI GENUINE PARTS” is always available at any of our authorized dealers, so do your ordering at your nearest dealer by specifying “MITSUBISHI GENUINE PARTS”.

GUIDE FOR USE OF PARTS CATALOGUE

1. This Parts Catalogue contains service parts for the following Mitsubishi S6S diesel engine.
Then applicable engine type and serial number are as below:

ENGINE NAME	MODEL	USE · SPECIFICATION	APPLICABLE SERIAL NO.
S6S	DT	For Forklift	36153-UP

2. When ordering parts, give the Mitsubishi dealer or distributor the following information:
 - (1) Part number (or assembly number) and part name.
 - (2) Quantity required
 - (3) Model and serial number

NOTE: In some cases a substitute part is furnished instead of the part ordered.
3. Indication of assembled bolts with washer
Of the standard bolts, those with washers are identified by the symbol "B/W" in the Description column of each list. (Part Name: BOLT,W/WASHER)
For the part numbers of the bolts and washers and those of bolts with washers, refer to the listing (beginning with the page D1) at the end of this parts catalogue. These bolts and washers should be ordered individually.
4. For the numerical index, refer to the page beginning with C1 at the end of this parts catalogue.
5. Some illustration may have some difference from the real part shape when the illustration Shows a representation of various parts.
6. The parts and part numbers are subject to change without prior notice.

SAMPLE OF PARTS CATALOGUE

GROUP NUMBER

GROUP NAME

07-01 CRANKCASE ASSY

Model type

Not applicable to the model of this column

Applicable to serial No. shown on cover and up if blank.

見出 番号 REF. -NO.	部品番号 PART NO.	代 替 順 号 R / P S E N G	部品名称および記事・仕様記号 PART NAME & DESCRIPTION	型式 個数 MODEL&QTY		適用号機 APPLICABLE SERIAL NO. FROM@ - - @UPTO	管 区 M / R D	新 規 V R D
				DT				
1	32507-70010		CRANKCASE ASSY	1				
1 01	F2846-14000		PIN,DOWEL	1				A
1 02	32507-01400		WASHER	1				A
1 03	*		CAP,MAIN BEARING	6				
1 04	*		CAP,MAIN BEARING	1				
1 05	*		CRANKCASE	1				
2	32507-02500	C	HANGER	1				
	32507-02700	N 1	HANGER	1		11286-		V
3	32507-04100	Q	SHIM	1				
	32507-04100	1	SHIM	1		11295@		
4	F1805-10025		BOLT,W/WASHER	8				A

See(8)-(a)Description codes	Quantity per unit	High-demand part. See(11)
See(8)-(c)Specification codes	Applicable from serial No. indicated.	Part newly changed or added. See(12)
See(8)-(b)Description	Applicable from 11295 (Scheduled)if suffixed with @ and sometimes differs from real serial No.	Applicable up to 11294 (Scheduled)if prefixed with @ and sometimes differs from real serial No.
See(6)Change codes.	Applicable up to serial No. indicated.	
See(5)Sequence-of-change numbers.		
See(2)Reference number.		
See(4)Interchangeability codes.		
Part not to be supplied See(3)		

NOTE : Some of model designations, number of variations and serial numbers, indicated above, are quoted from other parts catalogues.
Read these items of information as those for this parts catalogue.

NOTE: For the description of each item, refer to the pages which follow.

HOW TO USE THIS PARTS CATALOGUE
(to be referred to together with the former SAMPLE OF PARTS CATALOGUE)

(1) シリンダヘッド
CYLINDER HEAD

- 3 -

見出 番号 REF. -NO.	部品番号 PART NO.	代 替 R / P	変 更 順 号 S C E N E Q G	部品名称 および 記事・仕様記号 PART NAME & DESCRIPTION	型式・個数 MODEL & QTY		適用号機 APPLICABLE SERIAL NO.		管 区 M / R	新 規 V R D
					DT		FROM@-	-@UPTO		
1	32B01-06050			HEAD ASSY, CYLINDER	1					
2	*			HEAD	1					
2 01	04826-22000			CAP, SEALING	18					
2 02	04826-22500			CAP, SEALING	11					
2 03	32A01-01600			GUIDE, VALVE	12					

(2) (3) (4) (5) (6) (7) (8) (9) (10) (11) (12)

The items (1) thru (12) are as described below:

(1) Compiling system

The systems of a unit are grouped according to their location in the unit.. The groups, each identified by group number, are listed in the order by CONTENTS. Each group is preceded by an "exploded view" which clearly illustrates each part in its correct relation to the other parts in the illustration.

(2) Reference number

Abbreviated to "REF. No.," this number is used to located a part in the illustration. in cases where the reference number is of three to four figures, the first and second figures show the reference number of an assembly, and the last two figures show the numbers of its component parts.

(3) Part numbers

The part numbers shown in this parts catalogue are those assigned to genuine Mitsubishi parts.

NOTE : Parts with asterisk (*) are not supplied individually.

(4) Interchangeability codes

This interchangeability codes used in this parts catalogue are as follows:

PART NO.	Code (R / P)	DESCRIPTION
A(Old) B(New)	R	B(new part) and A(old part) are mutually interchangeable
A(Old) B(New)	1	A(Old part) is not supplied. B(new part) can be substituted for A(Old part).
A(Old) B(New)	3	B(new part) can be substituted for A(old part). [A(old part) cannot be substituted for B(new part).]
A(Old) B(New)	N	B(new part) and A(old part) are not interchangeable.
A(Old) B(New)	G	B(new part) can be substituted for A(old part) in combination with other part(s). (For the parts to be combined, refer to the listing beginning with the page E1 at the end of this parts catalogue.)

(5) Sequence-of-change numbers

The parts are changed for improved quality or performance. Their changes are indicated in sequence by numerals (1 . 2 . 3...)

Blank : Original

1 : 1st change

2 : 2nd change

3 : 3rd change

(6) Change codes

These codes indicate the reason or purpose of changes of the parts.

A : Added part (a part entered into service)

C : Change of part number

D : Deleted part (a part applicable up to the serial no. expressed in Serial No. column)

E : Added part except above reasons

Q : Change of quantity

(7) Part name

Abbreviations are sometimes used. For the abbreviations, refer to **TABLE OF SYMBOLS & ABBREVIATIONS** appeared in hide pages of this general information chapter.

NOTE: The location terms L.H (left hand) and R.H (right hand) are as these directions viewed from the flywheel side of an engine.

(8) Description & specification codes

(a) Description codes (expressed in the first part of Description column).

B / W: Assembled bolt (with washer)

KIT: Part supplied as a kit

STD: Standard part

OPT: Optional part

AR : Part used, as required or by selection or in adjusted quantity for necessity

SFN: Semi-finished part

(b) The Description codes in above paragraph (a) are followed by supplementary explanation such as dimensions (thickness, length, etc.) ,manufacturer part number, manufacturer name, etc. as occasion demands.

NOTE: Unless otherwise indicated, the dimensions are shown in millimeter and the name of unit is abbreviated.

(Examples) Thickness:T=1.00 Length:L=1000

Width:W=1500 Height:L=500

(c) Specification codes

Each specification or type of model and/or selective specifications of a unit are indicated by codes of three figures. For these codes, refer to **LIST OF SPECIFICATION CODES** appeared in hind pages of this general information chapter.

NOTE: Unless indicated by the specification codes, the parts may be used for the products of all specifications.

(Examples) A10:For diesel fuel

B10:With industrial electric starter

(d) The parts indicated as "NOT SHOWN", such as component parts of overhaul gasket kit, are not shown in the illustration.

(9) Model & quantity

(a) Model : Model, type, specification, destination, etc. of product to which a parts catalogue applies are indicated in the title column of each variation.

(b) Quantity :Quantity of part or assembly and its component parts required for one unit of product is indicated.

NOTE :In case "AR" appears in QTY column, it is required to adjust quantity for use.

(10) Applicable serial numbers

Applicable serial numbers of engine are indicated in the "UPTO" or "FROM" column. Serial numbers with "@" are scheduled ones and sometimes differ from the real serial numbers. If the "FROM" column is blank, the part is applicable to serial number shown on this cover and up.

(11) Management rank

Parts ranked as "A" are high-demand parts. This ranking is to be referred to by dealers, and is devised to facilitate and rationalize their distribution, stocking and inventory of the parts.

(12) Parts changed or added after the last parts list that has been published are identified by "V."

TABLE OF SYMBOLS & ABBREVIATIONS

SYMBOL	DESCRIPTION	SYMBOL	DESCRIPTION
ACCEL	ACCELERATOR	ELEC	ELECTRIC
ADJ	ADJUSTING (ADJUSTABLE)	ENG	ENGINE
AIR-CON	AIR-CONDITIONER	EQUIP	EQUIPMENT
ASSY	ASSEMBLY	EXH	EXHAUST
ATT	ATTACHMENT	E/TNK	EXPANSION TANK
AUTO	AUTOMATIC	FITT	FITTING
AUX	AUXILIARY	FLEX	FLEXIBLE
AR	AS REQUIRED	FR	FRONT
B/H	BACKHOE	GSKT	GASKET
BATT	BATTERY	GEN	GENERATOR
BRG	BEARING	GOV	GOVERNOR
B/PMP	BILGE PUMP	G/N	GROUP NUMBER
BRKT	BRACKET	H/EXCH	HEAT EXCHANGER
BUSH	BUSHING	HEX	HEXAGON
CARB	CARBURETOR	HYD	HYDRAULIC
C/L	CENTERLINE	H=	HEIGHT
COMPR	COMPRESSOR	IND	INDUSTRIAL
CON-ROD	CONNECTING-ROD	INJ	INJECTION
C/MBR	CROSS-MEMBER	INSTAL	INSTALLATION
CYL	CYLINDER	INST	INSTRUMENT
DIA	DIAMETER	INTLK	INTERLOCK
DIFF	DIFFERENTIAL	JUNC	JUNCTION
DISTR	DISTRIBUTOR	KD	KNOCKDOWN
DR	DRIVE	L.H	LEFT HAND
D=	OUT DIAMETER	LUB	LUBRICATION
		L=	LENGTH

TABLE OF SYMBOLS & ABBREVIATIONS

SYMBOL	DESCRIPTION	SYMBOL	DESCRIPTION
MANF	MANIFOLD	STD	STANDARD
MAX	MAXIMUM	SUPT	SUPPORT
M.L.H	MAXIMUM LIFTING HEIGHT	SYM	SYMBOL
MIN	MINIMUM	SYNCH	SYNCHRONIZER
MTR	MOTOR	SYS	SYSTEM
MTG	MOUNTING	TEMP	TEMPERATURE
NO.	NUMBER	TERM	TERMINAL
OPT	OPTION	T/CONV	TORQUE-CONVERTER
O/D	OVER DRIVE	T/F	TRANSFER
O.S	OVERSIZE	T/M	TRANSMISSION
PTO	POWER TAKE-OFF	T/HSG	TURBINE-HOUSING
P/S	POWER STEERING	T/C	TURBOCHARGER
PRESS	PRESSURE	T=	THICKNESS
P/N	PART NUMBER	U/BODY	UNDERBODY
QTY	QUANTITY	U.S	UNDERSIZE
		UNIV	UNIVERSAL
RAD	RADIATOR	VAC	VACUUM
RE	REAR	VENT	VENTILATOR
REG	REGULATOR	W/STRIP	WEATHERSTRIP
REV	REVERSE	W/	WITH
R.H	RIGHT HAND	W/O	WITHOUT
REF.NO.	REFERENCE NUMBER	W/W	WOODWARD
R/N	REFERENCE NUMBER	W/PMP	WATER PUMP
S/PMP	SEA WATER PUMP	W=	WIDTH
SECT	SECTION	Z=	NUMBER OF GEAR TEETH
S/MBR	SIDEMEMBER		

TABLE OF SYMBOLS & ABBREVIATIONS

SYMBOL	DESCRIPTION		SYMBOL	DESCRIPTION	
1ST	FIRST				
2ND	SECOND				
3RD	THIRD				
4TH	FOURTH				
5TH	FIFTH				
&	AND				
@	UNCONFIRMED				
*	PART NOT TO BE SUPPLIED				

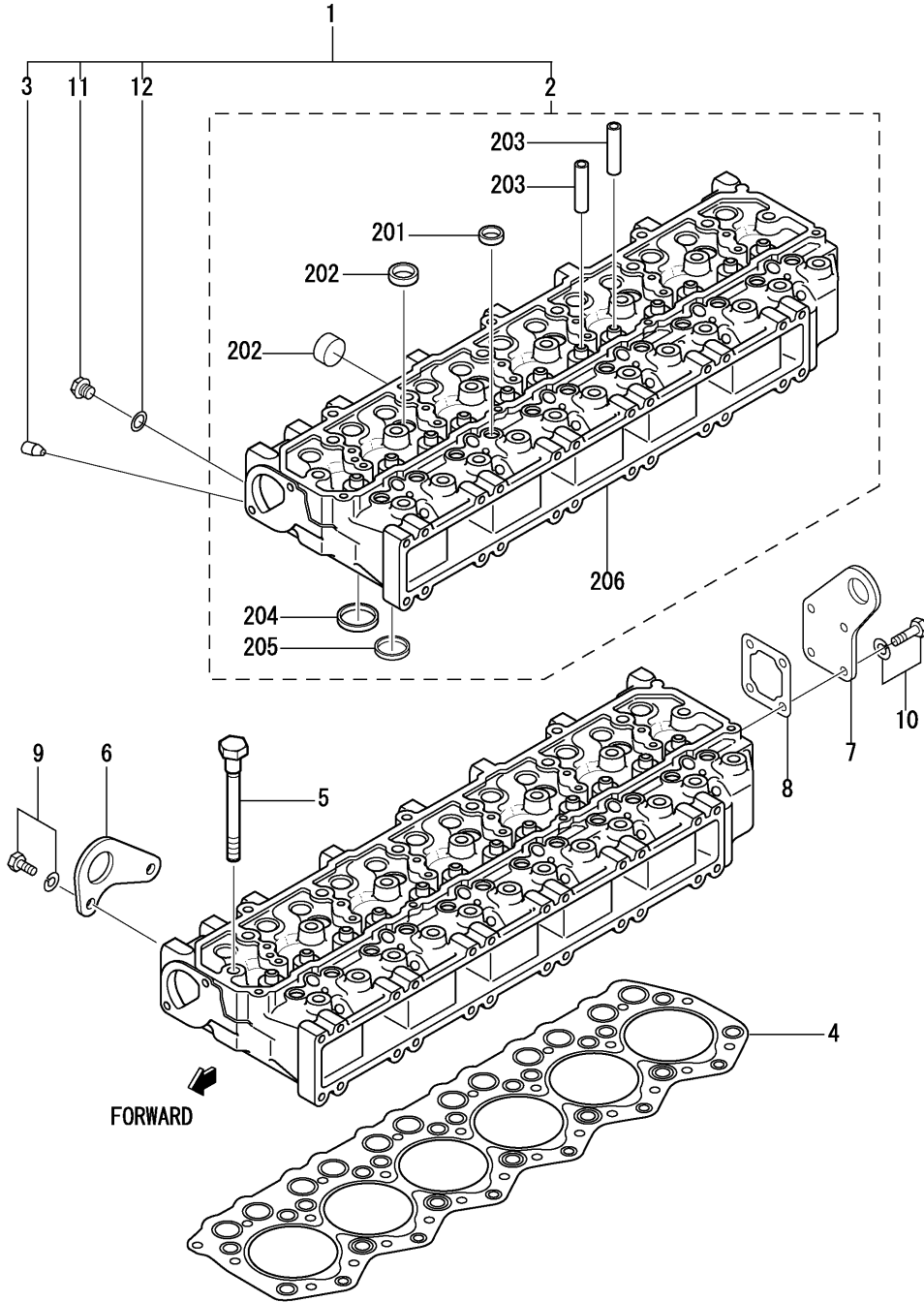
TABLE OF MAKER'S NAME

BAS or ZXL	Bosh Automotive System Corp. (OLD:Zexel Corp.)	NKC	Nikko Electric Industry Co., Ltd.
DEN or NDC	DENSO Corp. (OLD:Nippondenso Co., Ltd)	MEC	Mitsubishi Electric Corp.
HNC or NCC	Hitachi Nico Transmission Co., Ltd. (OLD:Niigata Converter Co.,Ltd.)	SEC	Sawafuji Electric Co., Ltd.
		MPC	Mikuni Precision Co.,Ltd.
		W / W	Woodward Governor (JAPAN),Ltd.

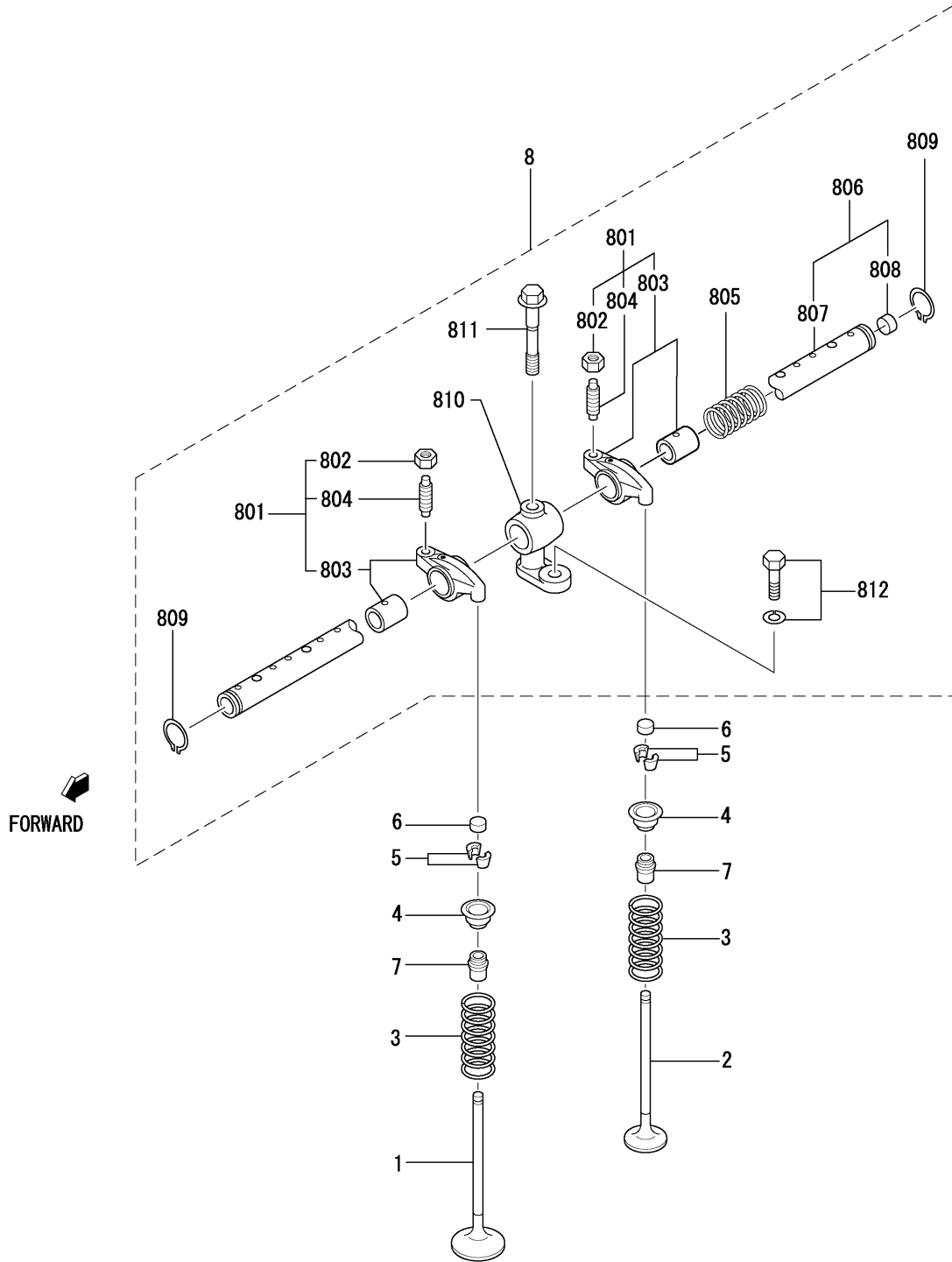
CONTENTS

GROUP NO .	GROUP NAME	PAGE
ENGINE BODY		
01	CYLINDER HEAD	2
04-01	VALVE MECHANISM	4
04-02	ROCKER COVER & BREATHER	6
05	CAMSHAFT	8
07-01	CRANKCASE ASSY	10
07-02	MAIN BEARING	12
11	TIMING GEAR CASE	14
13	OIL PAN	16
17	PISTON & CONNECTING-ROD	18
20	CRANKSHAFT & FLYWHEEL	20
23	TIMING GEAR	22
INLET & EXHAUST SYSTEM		
25	SIDE POWER TAKE-OFF	24
30	INLET & EXHAUST SYSTEM	26
OIL SYSTEM		
33	TURBOCHARGER(MODEL TE06H)	28
36-01	OIL PUMP & OIL STARINER	30
36-02	OIL PIPE(FOR TURBOCHARGER)	32
39	OIL COOLER	34

GROUP NO .	GROUP NAME	PAGE
COOLING SYSTEM		
40	OIL FILTER	36
FUEL SYSTEM		
46	COOLING SYSTEM	38
61-01	FUEL SYSTEM	40
61-02	NOZZLE	42
61-03-01	INJECTION PUMP(PART-1)	44
61-03-02	INJECTION PUMP(PART-2)	48
ELECTRIC PARTS		
62	FUEL FILTER	52
STARTING SYSTEM		
66-01	ELECTRIC PARTS	54
66-02	STARTER(24V-5.0KW)	56
INSTRUMENT		
68	ALTERNATOR(24V-35A)	58
REPAIR PARTS		
90	INSTRUMENT PARTS	60
94	OVERHAUL GASKET KIT	62
NUMERICAL PARTS INDEX		C1
TABLE OF BOLT,W/WASHER		D1



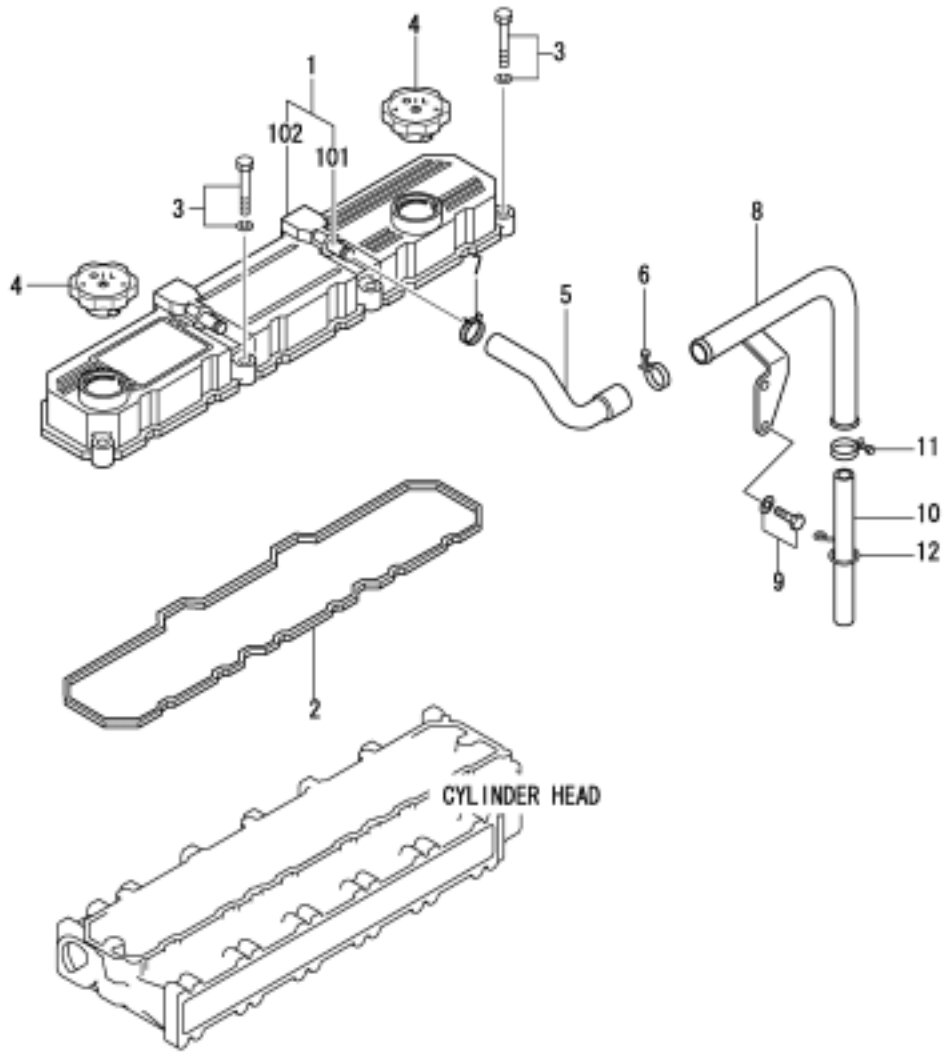
REF. -NO.	PART NO.	R / P	S C E N Q G	PART NAME & DESCRIPTION	MODEL & QTY			APPLICABLE SERIAL NO.		M / R	V R D
					DT			FROM@-	-@UPTO		
1	32B01-06040			HEAD ASSY, CYLINDER	1						
2	*			HEAD SUB ASSY, CYL	1						
2 01	04826-22000			CAP, SEALING	18						
2 02	04826-22500			CAP, SEALING	11						
2 03	32A01-01600			GUIDE, VALVE	12						
2 04	32A01-03100			SEAT, VALVE, INLET	6						
2 05	32A01-03200			SEAT, VALVE, EXHAUST	6						
2 06	*			HEAD, CYLINDER	1						
3	*			PLUG	1						
4	32B01-12101			GASKET, CYLINDER HEAD	1						
5	32A01-01400			BOLT, CYLINDER HEAD	25						
6	32A01-02700			EYE, LIFTING FRONT	1						
7	32A01-02800			EYE, LIFTING REAR	1						
8	32A01-02501			GASKET, HEAD REAR	1						A
9	F1805-08016			BOLT, W/WASHER	2						A
10	F1805-08020			BOLT, W/WASHER	4						A
11	MM316248			PLUG, DRAIN	1						A
12	30636-25901			GASKET	1						A



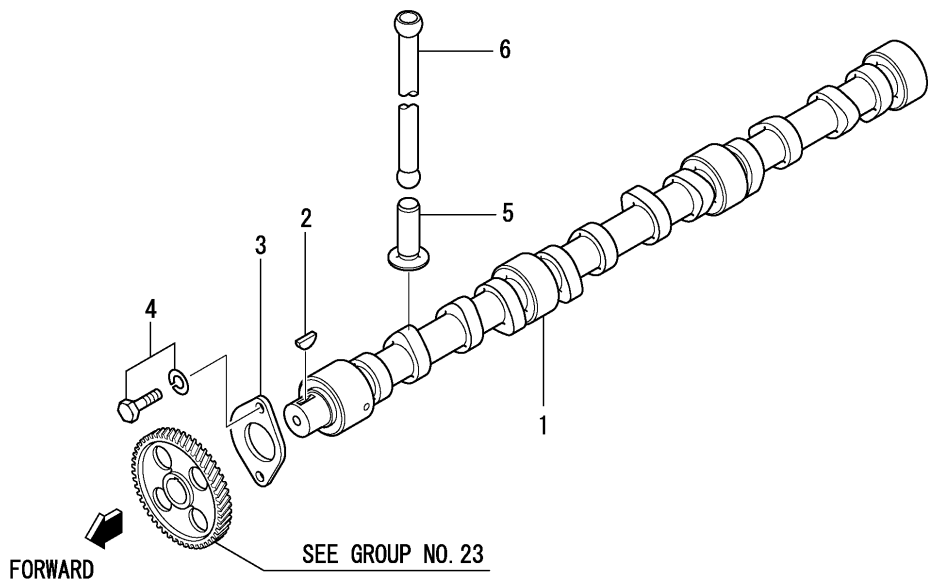
REF. -NO.	PART NO.	R / P	S E N Q G	PART NAME & DESCRIPTION	MODEL & QTY			APPLICABLE SERIAL NO.		M / R	V R D
					DT			FROM@-	-@UPTO		
1	32A04-20100			VALVE, INLET	6						
2	32A04-21100			VALVE, EXHAUST	6						
3	30604-21402			SPRING, VALVE	12					A	
4	30604-31601			RETAINER, UPPER	12						
5	34404-02901			COTTER, VALVE	24					A	
6	31304-11700			CAP	12						
7	32A04-02801			SEAL, VALVE STEM	12						
8	*			ROCKER & SHAFT ASSY	1						
8 01	32A04-22010			ROCKER ASSY	12						
8 02	F2325-08000			NUT, JAM	12						
8 03	*			ROCKER & BUSHING	12						
8 04	32A04-02401			SCREW, ROCKER	12						
8 05	32C04-04501			SPRING, ROCKER	5					A	
8 06	32B04-04011			SHAFT, ASSY, ROCKER	1						
8 07	*			SHAFT, ROCKER	1						
8 08	04826-21200			CAP, CEALING	2						
8 09	MF522010			RING, SNAP	2						
8 10	32A04-04701			BRACKET, ROCKER SHAFT	6						
8 11	32A04-04801			BOLT, ROCKER BRACKET	6						
8 12	F1805-08025			BOLT, W/WASHER	6					A	

04-02 ROCKER COVER & BREATHER

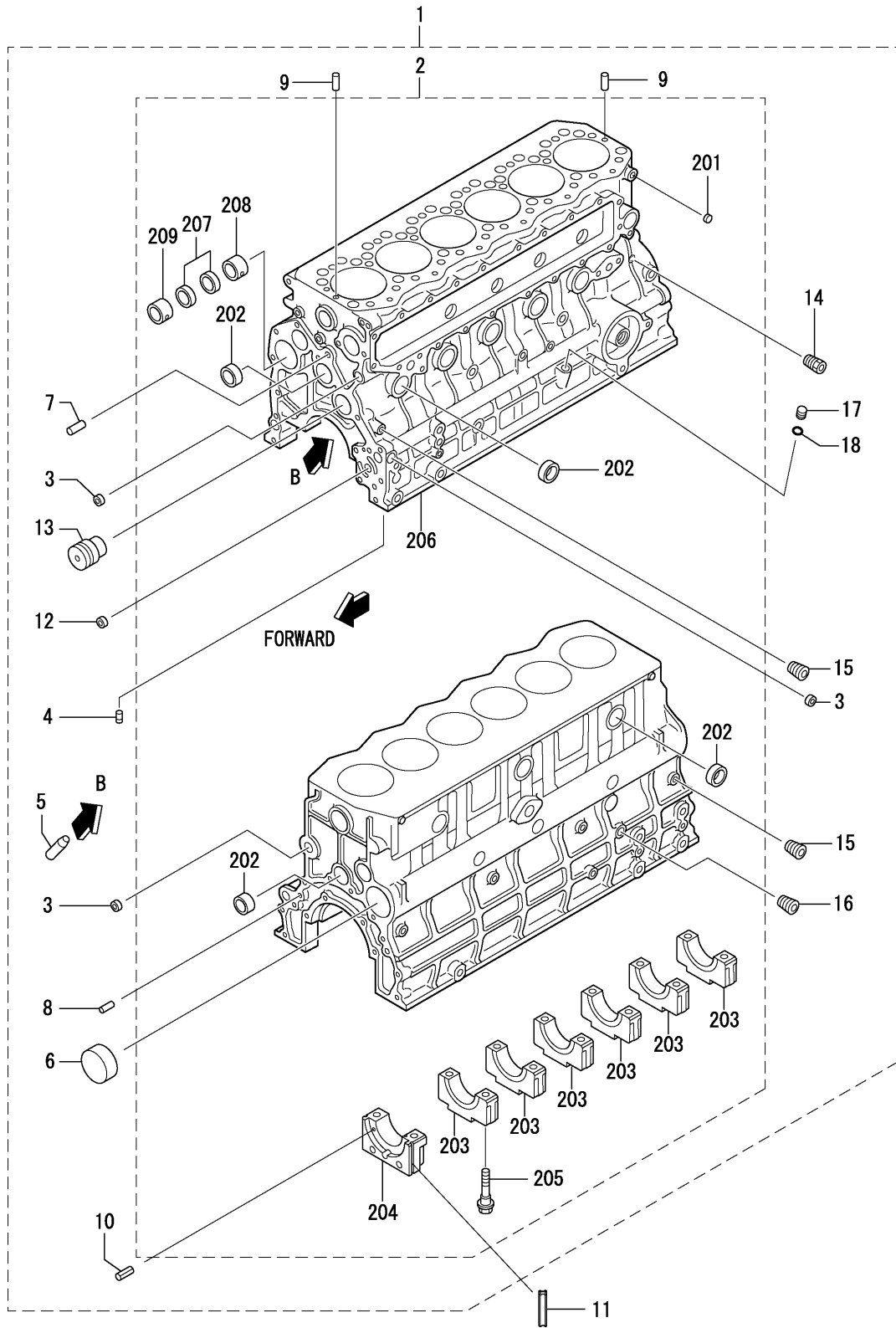
- 6-



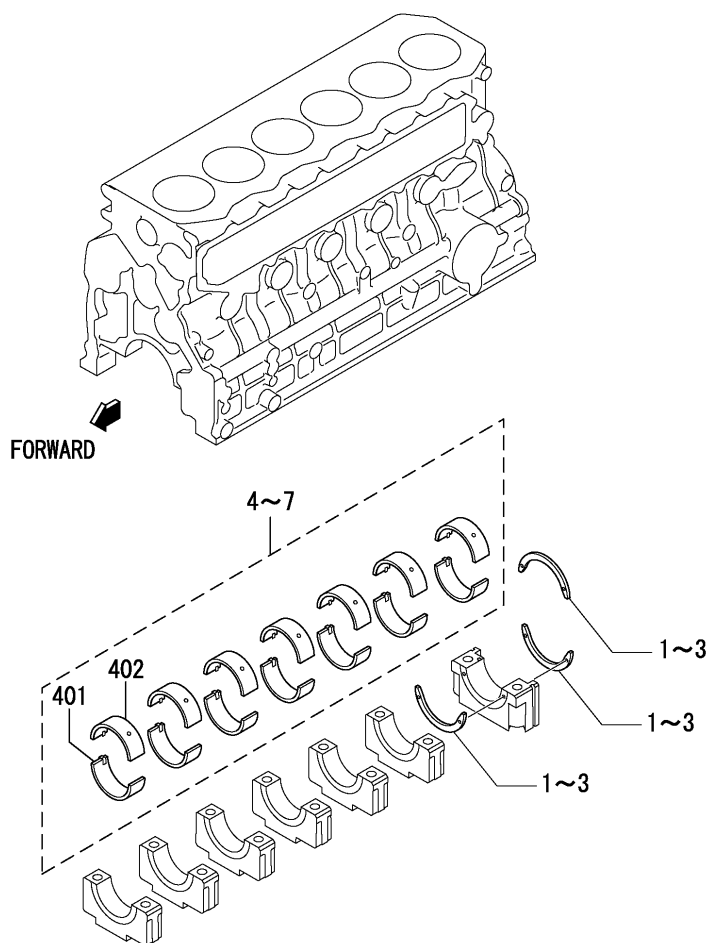
REF. -NO.	PART NO.	R / P	S E N Q G	PART NAME & DESCRIPTION	MODEL & QTY			APPLICABLE SERIAL NO.		M / R	V R D
					DT			FROM@-	-@UPTO		
1	32B04-06010			COVER ASSY ,ROCKER	1						
1 01	*			PIPE ,BREATHER	1						
1 02	*			COVER ,ROCKER	1						
2	32B04-03200			GASKET ,ROCKER COVER	1						
3	F1805-08040			BOLT ,W/WASHER B/W	7						A
4	MD008784			CAP ,OIL FILLER	2						
5	32B43-11600			HOSE ,BREATHER	1						
6	05317-72600			CLIP ,HOSE	1						
7	MS660174			CLIP ,HOSE	1						
8	32B43-01401			PIPE ,BREATHER	1						
9	F1805-08016			BOLT ,W/WASHER B/W	2						A
10	34243-01200			TUBE ,SOFT VINYL	1						
11	F4300-03201			CLAMP ,HOSE	1						
12	32A43-02900			CLIP ,HOSE	1						



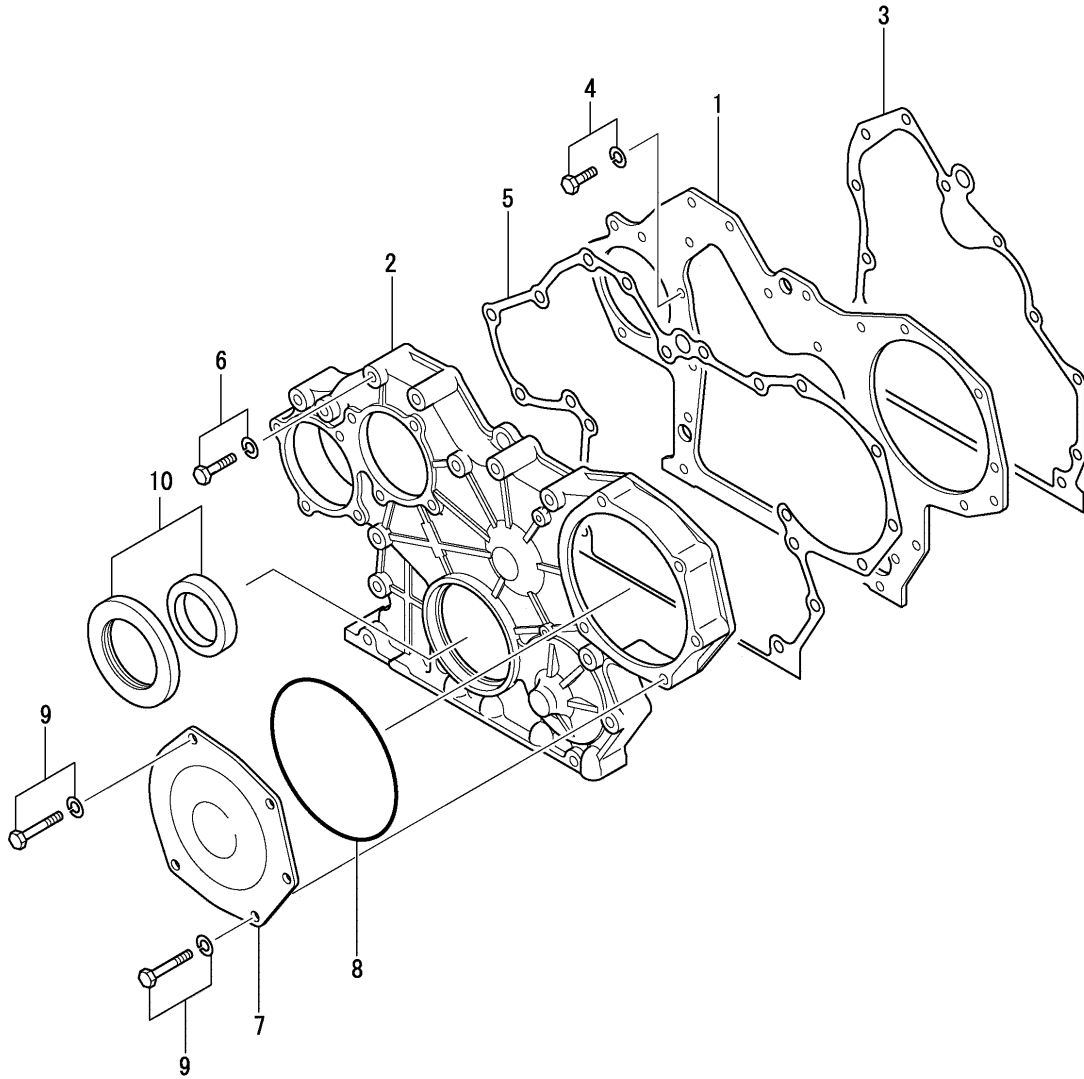
REF. -NO.	PART NO.	R / P	S C E N Q G	PART NAME & DESCRIPTION	MODEL & QTY			APPLICABLE SERIAL NO.		M / R	V R D
					DT			FROM@-	-@UPTO		
1	32B05-05102			CAMSHAFT	1						
2	F2870-07022			KEY ,WOODRUFF	1						
3	34405-00800			PLATE ,THRUST	1						
4	F1805-08016			BOLT ,W/WASHER	2					A	
5	32A05-02101			TAPPET	12						
6	32A05-13100			ROD ,PUSH	12						



REF. -NO.	PART NO.	R / P	S E N Q G	PART NAME & DESCRIPTION	MODEL & QTY			APPLICABLE SERIAL NO.		M / R	V R D
					DT			FROM@-	-@UPTO		
1	32B07-04062			CRANKCASE ASSY	1						
2	*			CRANKCASE SUB ASSY	1						
2 01	04826-21800			CAP, SEALING	1						
2 02	04826-23500			CAP, SEALING	14						
2 03	*			CAP, BEARING	6						
2 04	*			CAP, BEARING REAR	1						
2 05	32A07-02600			BOLT, BEARING CAP	14						A
2 06	*			CRANKCASE	1						
2 07	34307-02802			BUSHING, CAMSHAFT, M	2						
2 08	34307-02901			BUSHING, CAMSHAFT, R	1						
2 09	34307-12701			BUSHING, CAMSHAFT, F	1						
3	04826-21800			CAP, SEALING	8						
4	*			PLUG	4						
5	32A07-01800			VALVE, CHECK	6						
6	34307-02100			PLUG, CAM	1						
7	32A07-01501			PIN, DOWEL	2						A
8	F2846-12000			PIN, DOWEL	2						A
9	F2846-05000			PIN, DOWEL	2						A
10	F2850-04008			PIN, SPRING	6						A
11	32A07-11700			SEAL, SIDE	2						
12	05605-01410			BUSHING	1						
13	32A23-03500			SHAFT, IDLER	1						
14	MD000269			PLUG, TAPERED	1						
15	MS661140			PLUG, TAPERED	9						A
16	MS661142			PLUG, TAPERED	2						A
17	32C13-00900			PLUG	1						A
18	05507-10110			O-RING	1						A

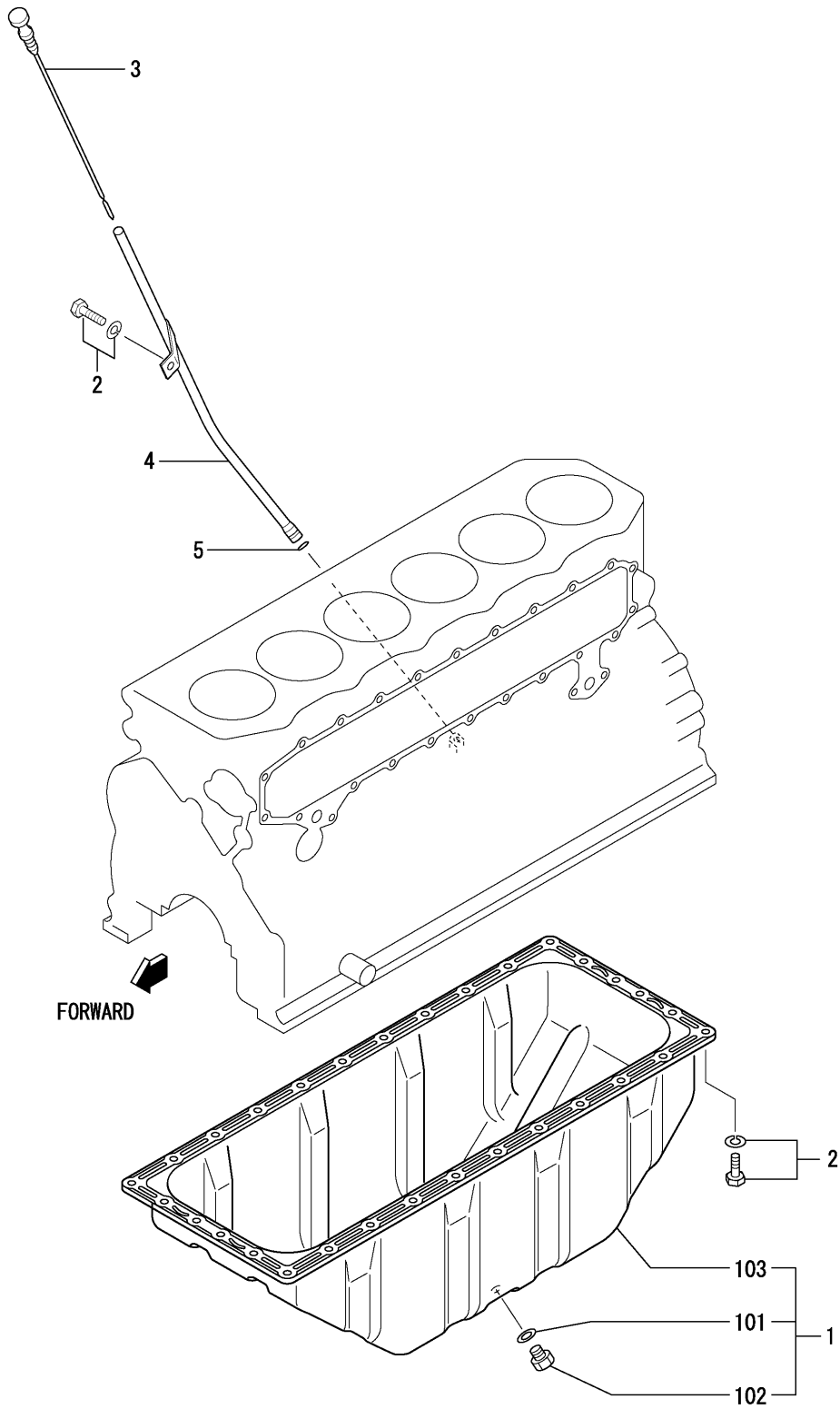


REF. -NO.	PART NO.	R / P	S C E N E P Q G	PART NAME & DESCRIPTION		MODEL & QTY			APPLICABLE SERIAL NO.		M / R	V / R D
						DT			FROM@-	-@UPTO		
1	32B09-08101			PLATE, THRUST	STD	3						
2	32B09-08201			PLATE, THRUST	O.S 015	3						
3	32B09-08301			PLATE, THRUST	O.S 0.30	3						
4	32B09-00010			BEARING SET, MAIN	STD	1						
4 01	*			MAIN BEARING, LOWER		7						
4 02	*			MAIN BEARING, UPPER		7						
5	32B09-00020			BEARING SET, MAIN	U.S 0.25	1						
6	32B09-00030			BEARING SET, MAIN	U.S 0.50	1						
7	32B09-00040			BEARING SET, MAIN	U.S 0.75	1						



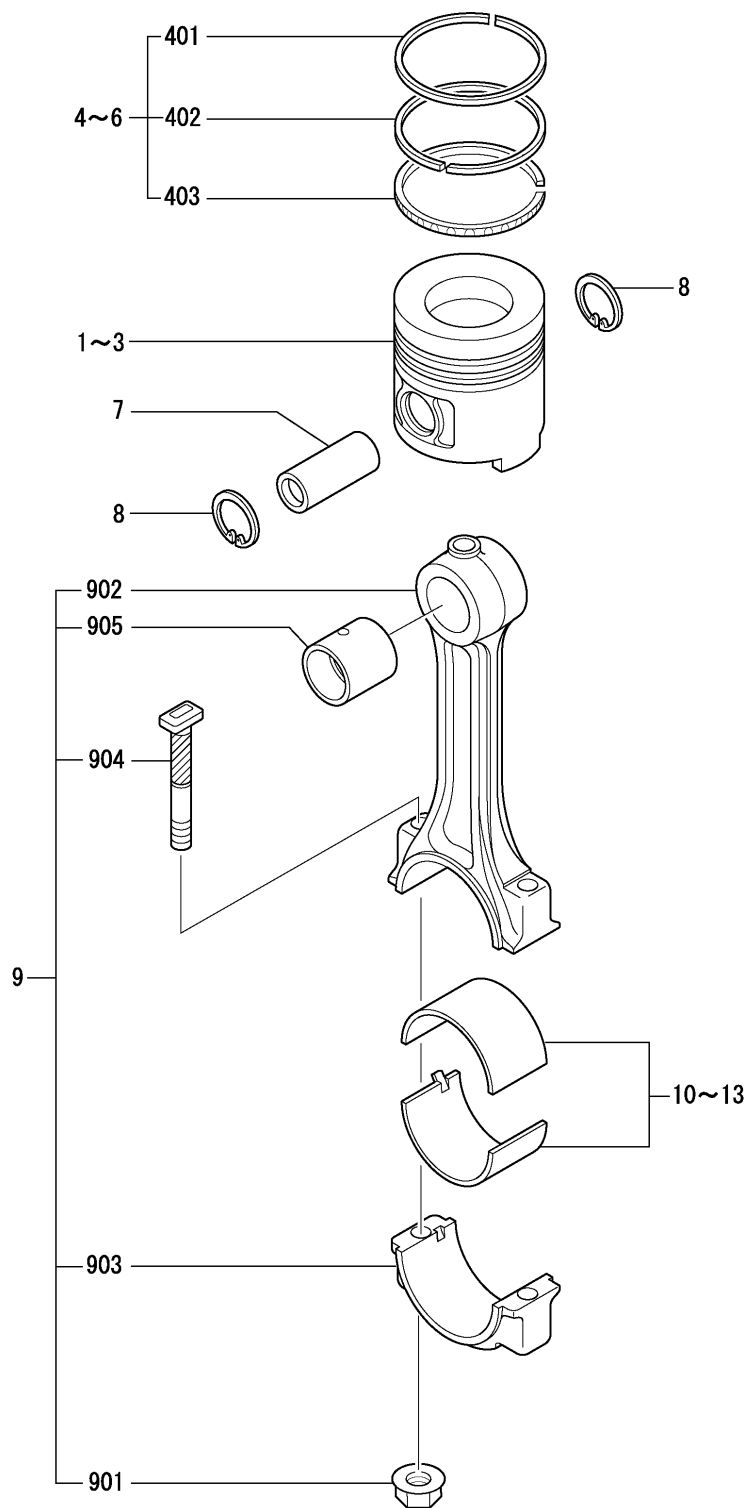
REF. -NO.	PART NO.	R / P	S C E N Q G	PART NAME & DESCRIPTION	MODEL & QTY			APPLICABLE SERIAL NO.		M / R	V R D
					DT			FROM@-	-@UPTO		
1	32A11-33200			PLATE,FRONT	1						
2	32A11-32102			CASE,TIMING GEAR	1						
3	32A07-04100			GASKET,FRONT PLATE	1						
4	F1805-08016			BOLT,W/WASHER B/W	5						A
5	32A11-22201			GASKET,GEAR CASE	1						
6	F1805-08055			BOLT,W/WASHER B/W	12						A
7	32A11-01100			COVER,GEAR CASE	1						
8	06016-13140			O-RING	1						A
9	F1805-08065			BOLT,W/WASHER B/W	8						A
10	32A11-04010			SEAL,OIL	1						A

13 OIL PAN

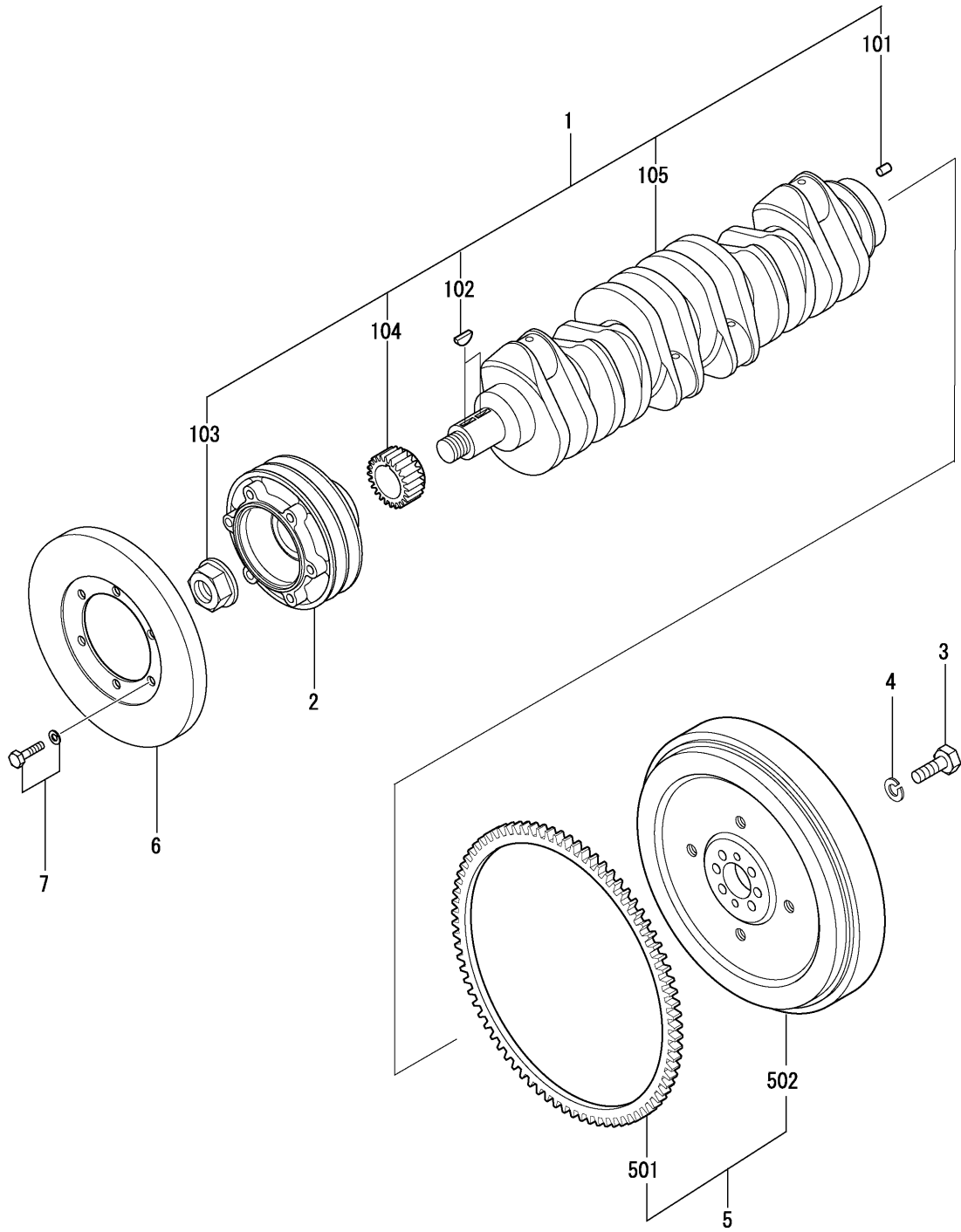


REF. -NO.	PART NO.	R / P	S C E N Q G	PART NAME & DESCRIPTION	MODEL & QTY			APPLICABLE SERIAL NO.		M / R	V R D
					DT			FROM@-	-@UPTO		
1	32B13-00010			PAN ASSY,OIL	1						
1 01	F4202-20000			GASKET	1					A	
1 02	32B13-00200			PLUG,DRAIN	1						
1 03	*			PAN,OIL	1						
2	F1805-08016			BOLT,W/WASHER B/W	31					A	
3	32B42-02500			GAGE,OIL LEVEL	1						
4	32B42-10700			GUIDE,OIL LEVEL GAGE	1						
5	05507-10110			O-RING	1					A	

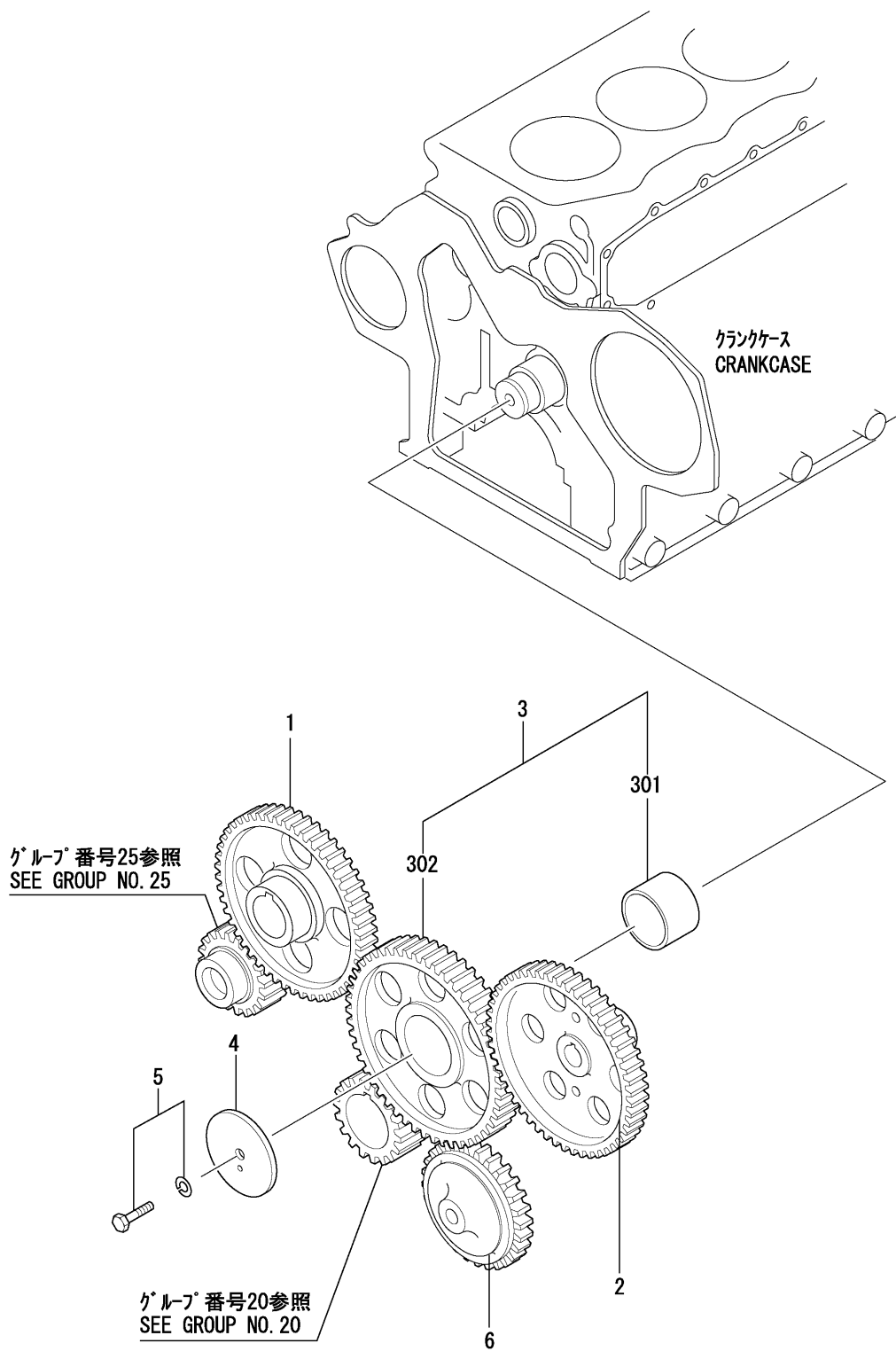
PISTON & CONNECTING-ROD



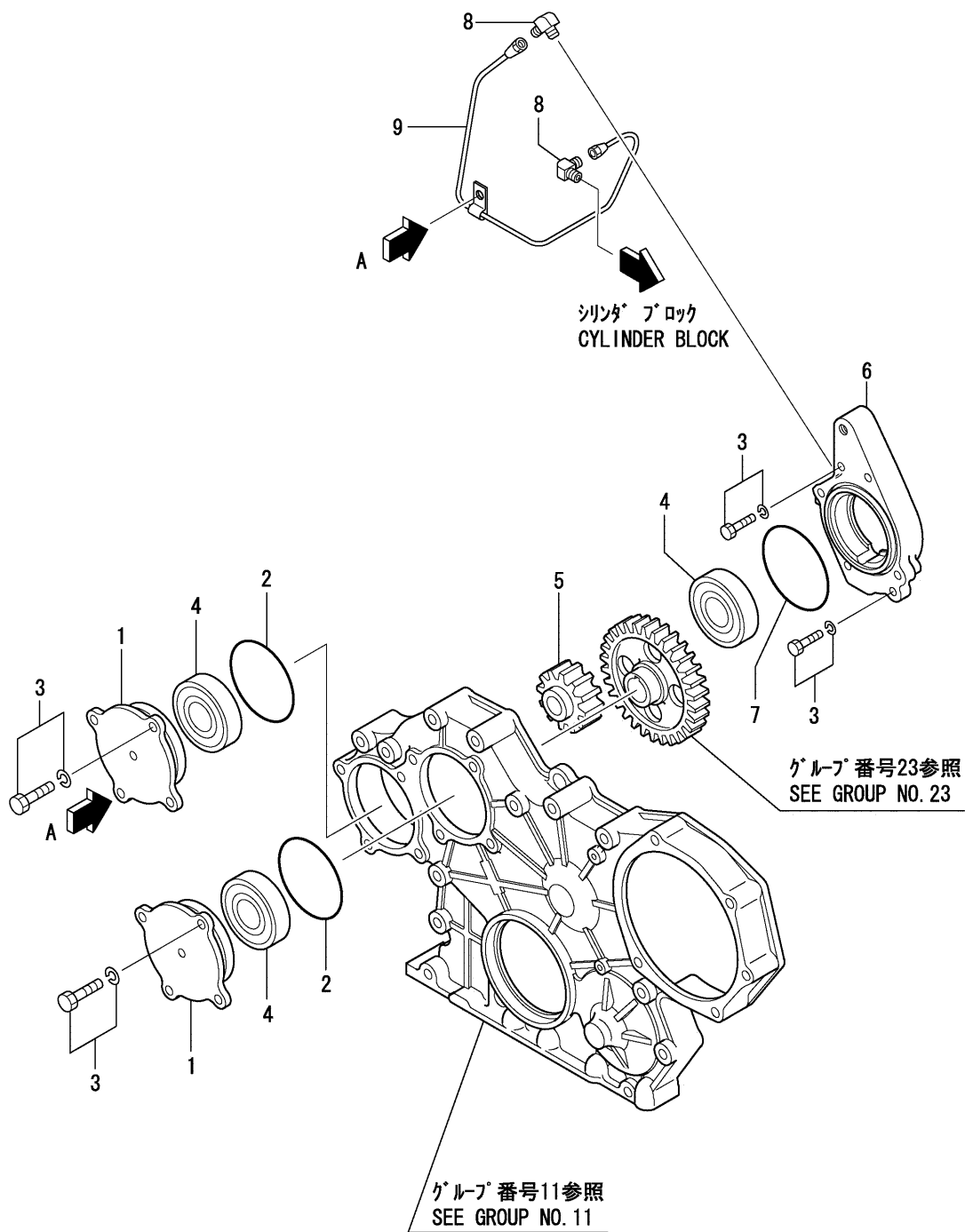
REF. -NO.	PART NO.	R / P	S C E N Q G	PART NAME & DESCRIPTION		MODEL & QTY			APPLICABLE SERIAL NO.		M / R	V R D
						DT			FROM@-	-@UPTO		
1	32A17-03100			PISTON	STD	6						A
2	32A17-03200			PISTON	0.S 0.25	6						A
3	32A17-03300			PISTON	0.S 0.50	6						A
4	32A17-02010			RING SET,PISTON	STD	1						A
4 01	*			RING,NO.1		6						
4 02	*			RING,NO.2		6						
4 03	*			RING,OIL		6						
5	32A17-02020			RING SET,PISTON	0.S 0.25	1						
6	32A17-02030			RING SET,PISTON	0.S 0.50	1						
7	32A17-08300			PIN,PISTON		6						A
8	F3202-03000			RING,SNAP		12						A
9	32A19-00012			ROD ASSY,CONNECTING		6						
9 01	30619-10501			NUT,CONNECTING-ROD		12						A
9 02	*			CONNECTING-ROD		6						
9 03	*			CAP,CONNECTING-ROD		6						
9 04	32A19-00400			BOLT,CONNECTING-ROD		12						A
9 05	32A19-00501			BUSHING,CON-ROD		6						
10	32B19-09011			BEARING SET,CON-ROD	STD	1						
11	32B19-09021			BEARING SET,CON-ROD	U.S .25	1						
12	32B19-09031			BEARING SET,CON-ROD	U.S 0.50	1						
13	32B19-09041			BEARING SET,CON-ROD	U.S 0.75	1						



REF. -NO.	PART NO.	R / P	S C E N Q G	PART NAME & DESCRIPTION	MODEL & QTY			APPLICABLE SERIAL NO.		M / R	V R D
					DT			FROM@-	-@UPTO		
1	32B20-10020			CRANKSHAFT ASSY	1						
1 01	F2846-10000			PIN, DOWEL	2					A	
1 02	F2870-07022			KEY, WOODRUFF	2						
1 03	32A20-02901			NUT, CRANKSHAFT	1						
1 04	32A23-00200			GEAR, CRANKSHAFT	1						
				Z=23							
1 05	*			CRANKSHAFT	1						
2	32B20-11201			PULLEY, CRANKSHAFT	1						
3	F1035-12045			BOLT	6					A	
4	F2515-12000			WASHER SPRING	6					A	
5	32B21-10030			FLYWHEEL ASSY	1						
5 01	32A21-00900			GEAR, RING	1						
5 02	*			FLYWHEEL	1						
6	34722-10300			TORSIONAL DAMPER	1						
7	F1805-10020			BOLT, W/WASHER	6					A	
				B/W							

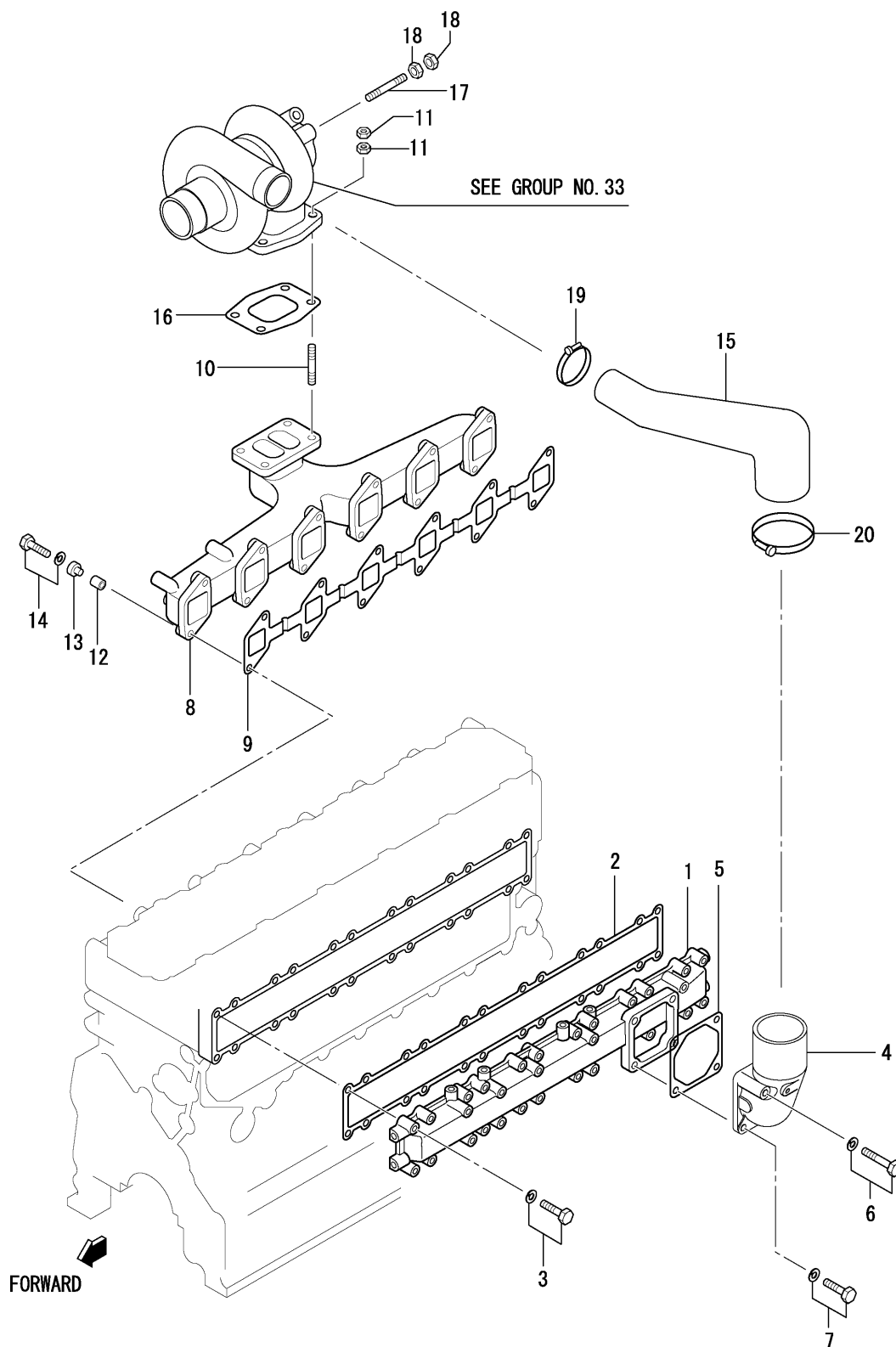


REF. -NO.	PART NO.	R / P	S C E N Q G	PART NAME & DESCRIPTION		MODEL & QTY			APPLICABLE SERIAL NO.		M / R	V R D
						DT			FROM@-	-@UPTO		
1	32A23-01200			GEAR,CAMSHAFT	Z=46	1						
2	32A23-05700			GEAR, INJECTION PUMP	Z=46	1						
3	32A23-03030			IDLER ASSY, GEAR	Z=49	1						
3 01	32A23-03200			BUSHING, IDLER		1						
3 02	*			GEAR, IDLER		1						
4	34323-00801			PLATE, THRUST		1						
5	F1805-10020			BOLT, W/WASHER	B/W	1					A	
6	32A35-22202			GEAR, OIL PUMP	Z=31	1						

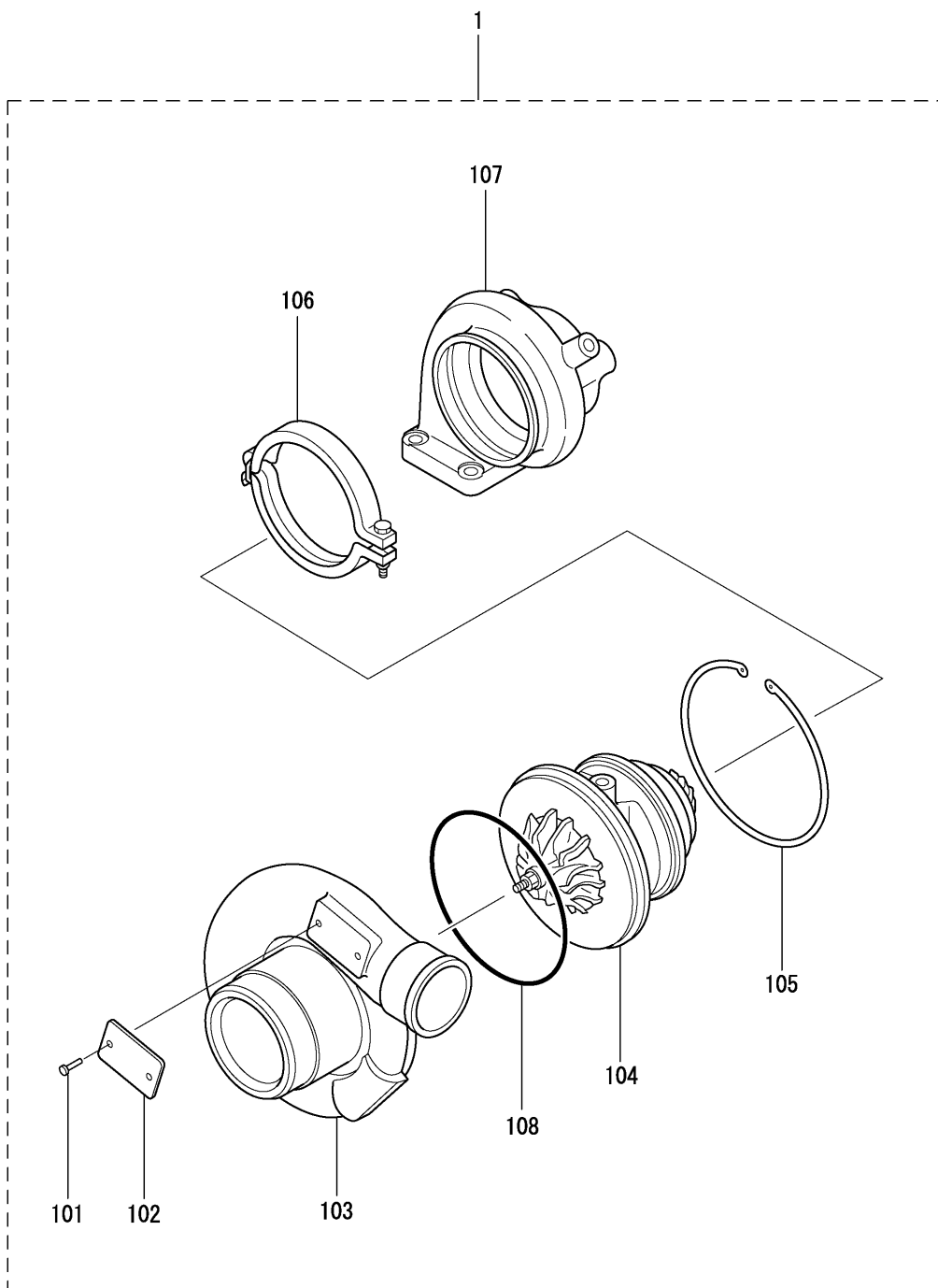


REF. -NO.	PART NO.	R / P	S C E N Q G	PART NAME & DESCRIPTION	MODEL & QTY			APPLICABLE SERIAL NO.		M / R	V R D
					DT			FROM@-	-@UPTO		
1	32A11-02901			CASE, BEARING	2						
2	F3153-07500			O-RING	2						
3	F1035-08016			BOLT	7						
4	F8004-06008			BEARING, BALL	3						
5	32A23-24101			GEAR, PUMP DRIVE	1						
6	32A23-07100			CASE, BEARING	1						
7	06016-13080			O-RING	1						
8	32A36-00500			CONNECTOR	2						
9	32A36-10400			PIPE, OIL	1						

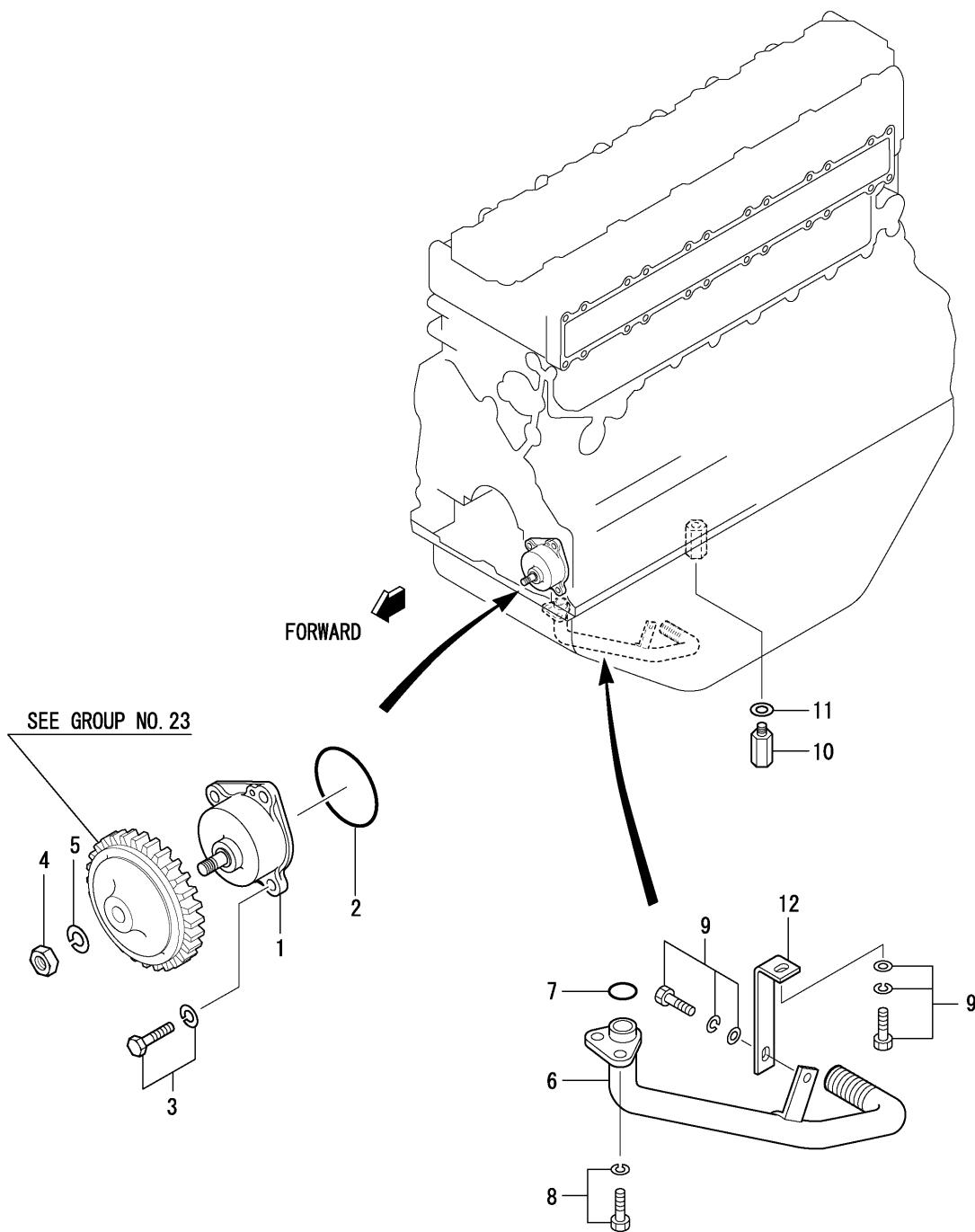
INLET & EXHAUST SYSTEM



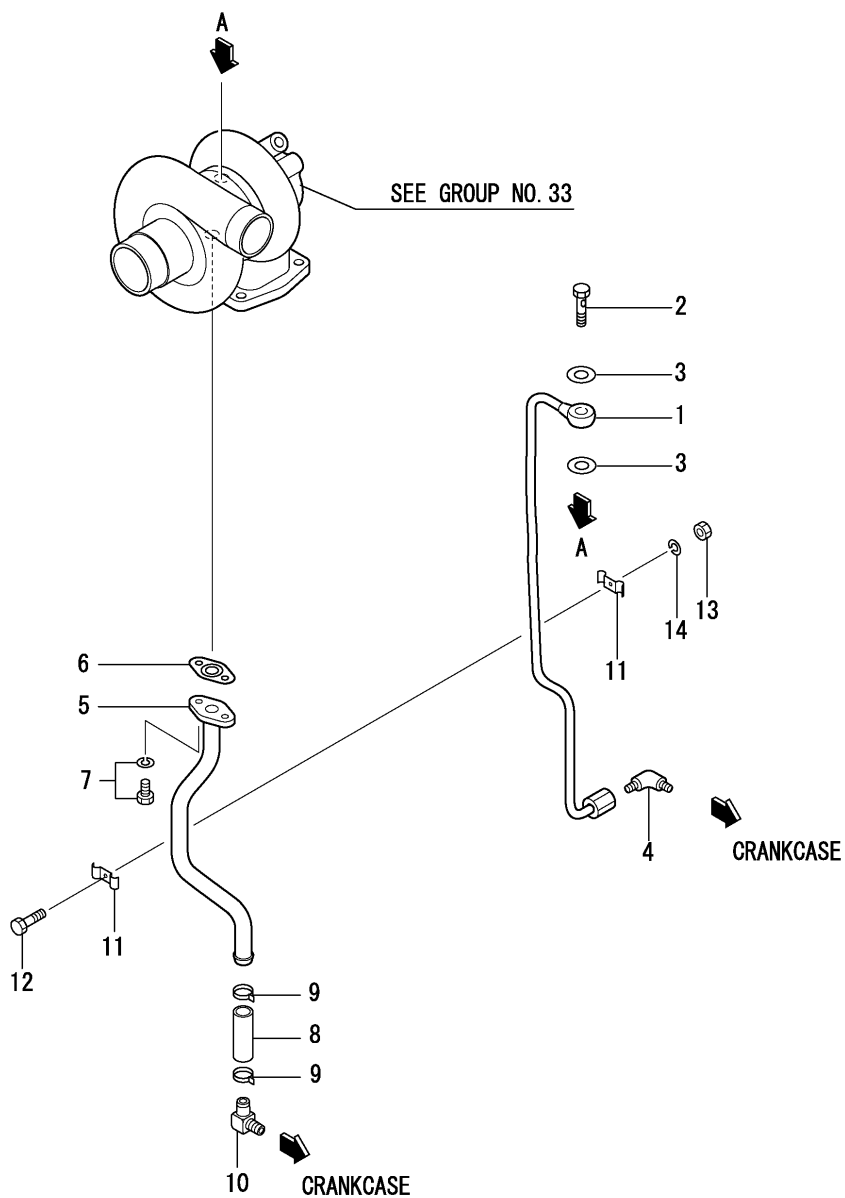
REF. -NO.	PART NO.	R / P	S C E N Q G	PART NAME & DESCRIPTION	MODEL & QTY			APPLICABLE SERIAL NO.		M / R	V R D
					DT			FROM@-	-@UPTO		
1	32B30-00500			MANIFOLD, INLET	1						
2	32B30-00201			GASKET, IN. MANIFOLD	1						
3	F1805-08040			BOLT, W/WASHER B/W	24						A
4	32B30-01102			ELBOW ASSY, AIR INLET	1						A
5	34330-04300			GASKET, AIR HEATER	1						A
6	F1805-08065			BOLT, W/WASHER B/W	2						A
7	F1805-08020			BOLT, W/WASHER B/W	2						A
8	32B32-00501			MANIFOLD, EXHAUST	1						
9	32B32-00200			GASKET, EXH, MANIFOLD	1						
10	F1450-10030			STUD	4						
11	32332-00801			NUT, LOCK	8						A
12	32B32-00901			SPACER	12						
13	34332-21301			WASHER	12						A
14	F1805-08050			BOLT, W/WASHER B/W	12						A
15	32B30-04300			HOSE, AIR	1						
16	36732-04900			GASKET	1						A
17	F1450-10030			STUD	3						
18	32332-00801			NUT, LOCK	6						A
19	05317-50701			CLAMP	1						A
20	05317-50901			CLAMP	1						A



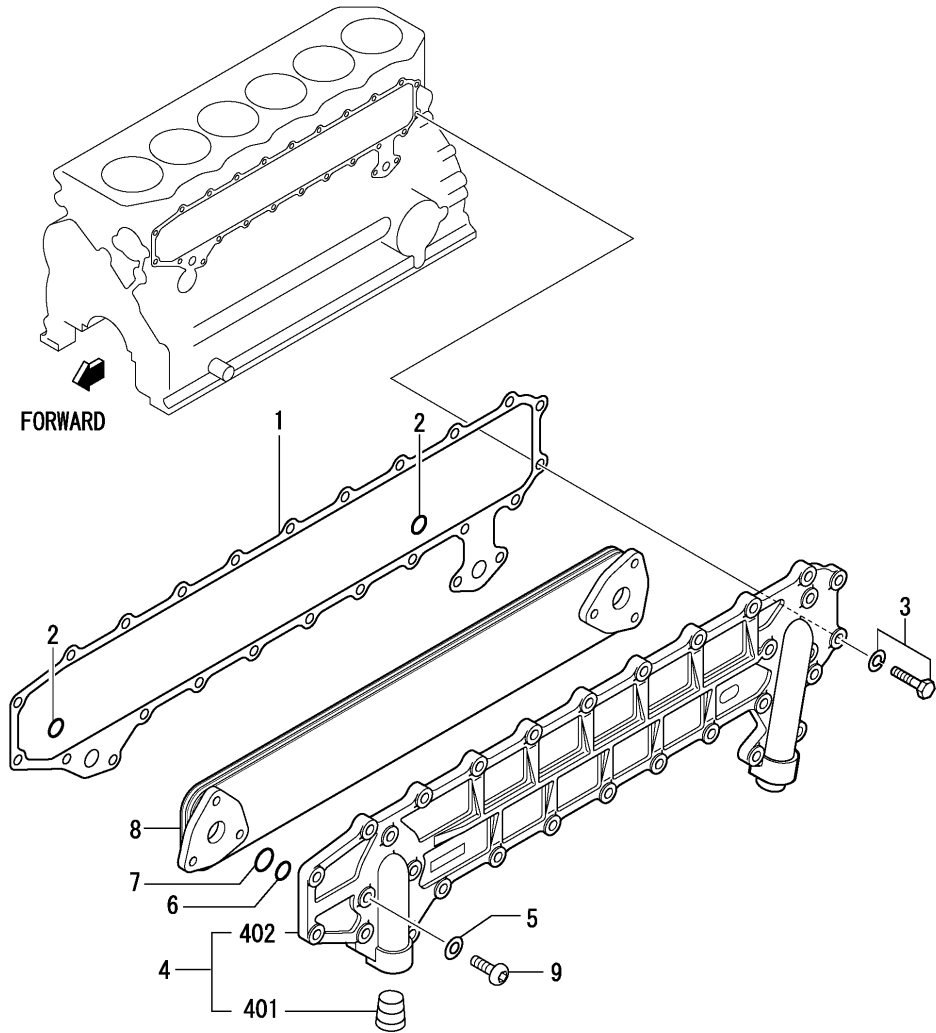
REF. -NO.	PART NO.	R / P	S C E N Q G	PART NAME & DESCRIPTION	MODEL & QTY			APPLICABLE SERIAL NO.		M / R	V R D
					DT			FROM@-	-@UPTO		
1	49179-02240			TURBOCHARGER ASSY	1						
1 01	00665-02048			RIVET, SCREW	2						
1 02	*			PLATE, NAME	1						
1 03	49179-57860			COVER, COMPRESSOR	1						
1 04	49179-08600			CARTRIDGE ASSY	1						A
1 05	49168-23101			RING, SNAP	1						A
1 06	49184-14000			COUPLING ASSY	1						
1 07	49179-17821			HOUSING, TURBINE	1						
1 08	49168-56100			O-RING	1						A



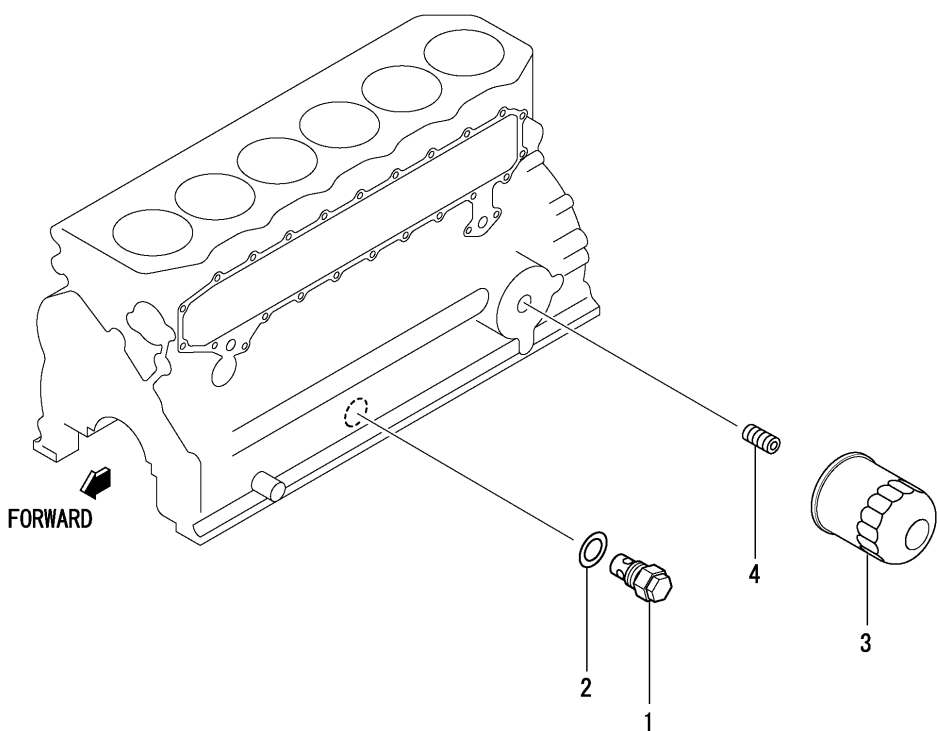
REF. -NO.	PART NO.	R / P	S C E N Q G	PART NAME & DESCRIPTION	MODEL & QTY			APPLICABLE SERIAL NO.		M / R	V R D
					DT			FROM@-	-@UPTO		
1	32B35-00012			PUMP ASSY,OIL	1						
2	32A35-00600			O-RING	1						A
3	F1805-08020			BOLT,W/WASHER	4						A
4	F2320-10000			NUT,JAM	1						A
5	F2515-10000			WASHER, SPRING	1						A
6	32B35-15100			STRAINER,OIL	1						A
7	F3150-02000			O-RING	1						A
8	F1805-08016			BOLT,W/WASHER	2						A
9	F1825-08016			BOLT,W/WASHER	2						A
10	32A36-00011			VALVE ASSY, SAFETY	1						A
11	F4202-18000			GASKET	1						A
12	32B35-06200			STAY,OIL STRAINER	1						



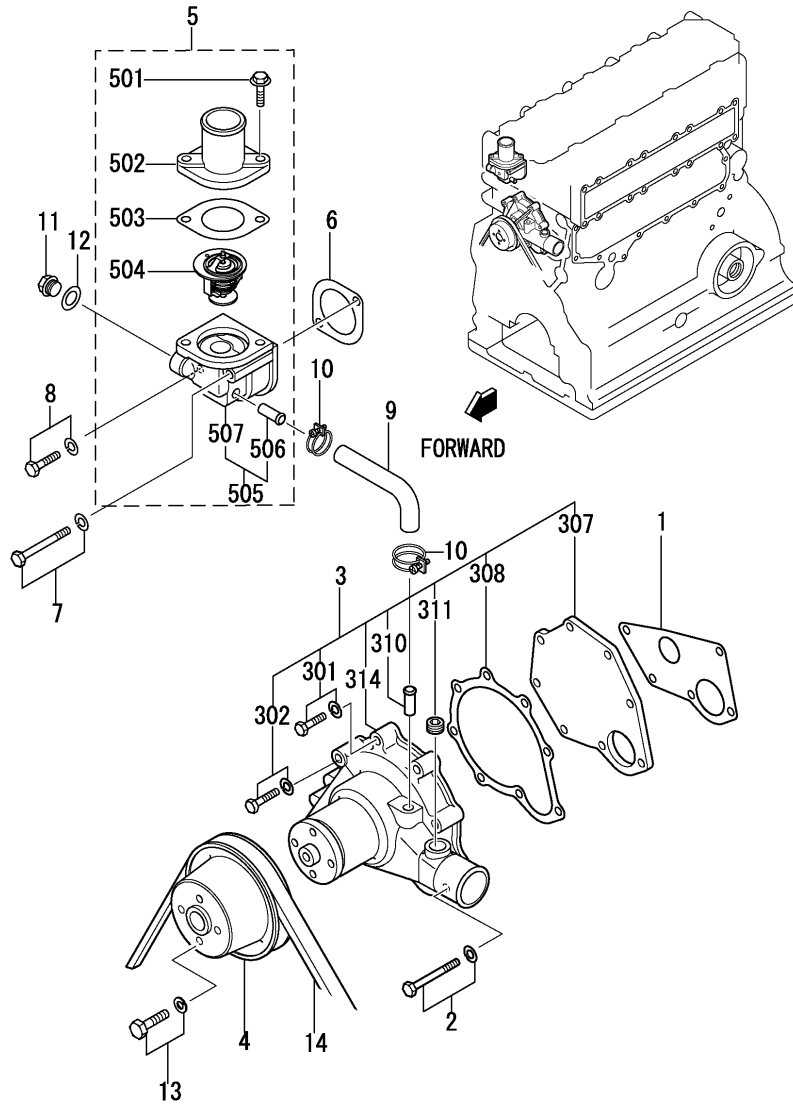
REF. -NO.	PART NO.	R / P	S C E N Q G	PART NAME & DESCRIPTION	MODEL & QTY			APPLICABLE SERIAL NO.		M / R	V R D
					DT			FROM@-	-@UPTO		
1	32B36-04100			PIPE,OIL	1						
2	30436-53501			BOLT,EYE	1					A	
3	F4202-10000			GASKET	2					A	
4	F4656-06000			ELBOW	1						
5	32B36-04200			PIPE,OIL	1						
6	34336-04100			GASKET,OIL PIPE	1					A	
7	F1805-06016			BOLT,W/WASHER	2					A	
8	34333-01401			HOSE,OIL	1						
9	F4300-02500			CLAMP,HOSE	2						
10	34407-12601			ELBOW	1						
11	30436-52900			CLAMP	2					A	
12	F1035-06020			BOLT	1					A	
13	F2300-06000			NUT, LOCK	1					A	
14	F2515-06000			WASHER, SPRING	1					A	



REF. -NO.	PART NO.	R / P	S C E N Q G	PART NAME & DESCRIPTION	MODEL & QTY			APPLICABLE SERIAL NO.		M / R	V R D
					DT			FROM@-	-@UPTO		
1	32B39-00800			GASKET,OIL COOLER	1						
2	F3150-02000			O-RING	2					A	
3	F1805-08025			BOLT,W/WASHER	25					A	
4	32B39-00202			CASE ASSY	1						
4 01	04827-72100			PLUG,TAPERED	2						
4 02	*			CASE	1						
5	F4202-08000			GASKET	6					A	
6	05507-00280			O-RING	2					A	
7	05507-00400			O-RING	2					A	
8	32B39-00100			ELEMENT ASSY	1					A	
9	32B39-00501			BOLT,OIL COOLER	6						

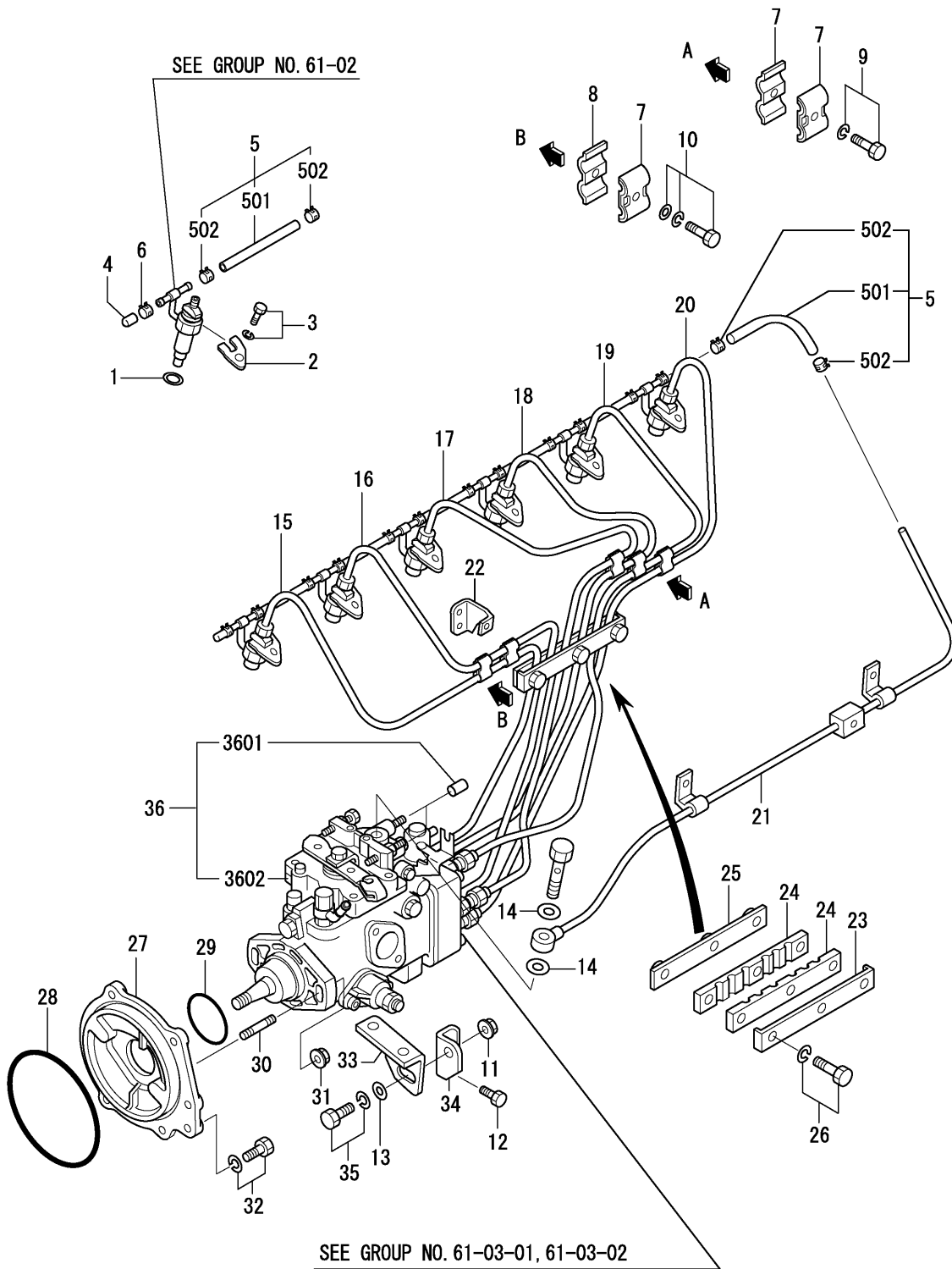


REF. -NO.	PART NO.	R / P	S C E N Q G	PART NAME & DESCRIPTION	MODEL & QTY			APPLICABLE SERIAL NO.		M / R	V R D
					DT			FROM@-	-@UPTO		
1	32A36-05012			VALVE ASSY,RELIEF	1						
2	34340-00700			GASKET	1					A	
3	32B40-00100			CARTRIDGE ASSY,OIL	1						
4	32A40-01100			UNION,OIL FILTER	1						



REF. -NO.	PART NO.	R / P	S C E N Q G	PART NAME & DESCRIPTION	MODEL & QTY			APPLICABLE SERIAL NO.		M / R	V R D
					DT			FROM@-	-@UPTO		
1	32A45-00500			GASKET ,WATER PUMP	1						
2	F1805-08045			BOLT ,W/WASHER	5					A	
3	32B45-10031			PUMP ASSY ,WATER	1						
3 01	F1805-08025			BOLT ,W/WASHER	2					A	
3 02	F1805-08035			BOLT ,W/WASHER	1					A	
3 07	32A45-00300			COVER ,WATER PUMP	1						
3 08	32A45-00400			GASKET ,PUMP COVER	1						
3 10	*			PIPE ,WATER PUMP	1						
3 11	F5005-17001			PLUG TAPERED	1					A	
3 14	*			CASE ,WATER PUMP	1						
4	32B45-02101			PULLEY ,WATER PUMP	1						
5	32A46-20040			THERMOSTAT ASSY	1						
5 01	MF140227			BOLT ,FLANGE	2						
5 02	32A46-01101			COVER ,THERMOSTAT	1						
5 03	32A46-01400			GASKET ,THERMOSTAT	1						
5 04	32A46-02100			THERMOSTAT	1						
5 05	32A46-10030			CASE ASSY ,THERMOSTAT	1						
5 06	*			PIPE ,THERMOSTAT	1						
5 07	*			CASE ,THERMOSTAT	1						
6	34446-05300			GASKET	1						A
7	F1805-08075			BOLT ,W/WASHER	1					A	
8	F1805-08045			BOLT ,W/WASHER	1					A	
9	32A46-00900			HOSE ,BY -PASS	1						
10	32A46-03100			CLAMP ,HOSE	2						
11	MM316248			PLUG ,DRAIN	2						A
12	30636-25901			GASKET	2					A	
13	F1805-08020			BOLT ,W/WASHER	4					A	
14	05910-20046			V-BELT	1						

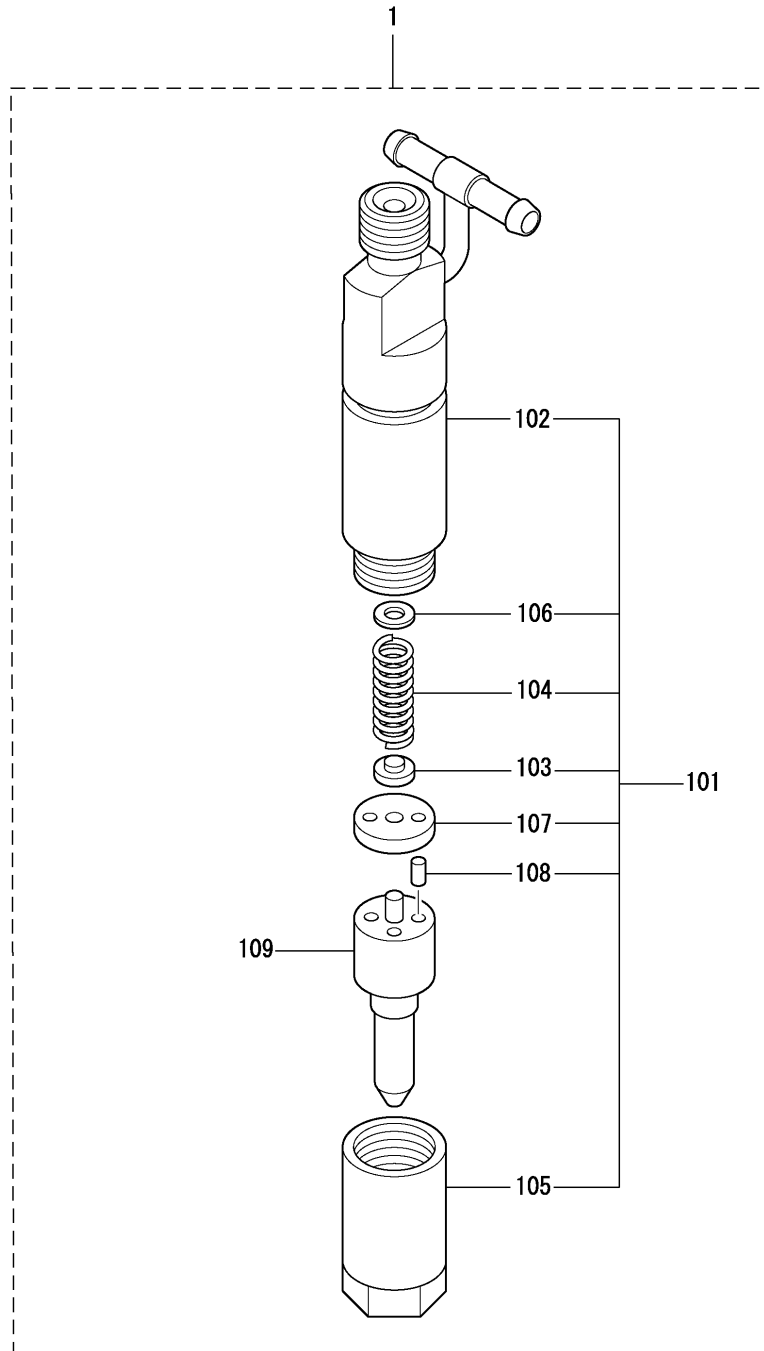
61-01 FUEL SYSTEM



61-01 FUEL SYSTEM

REF. -NO.	PART NO.	R / P	S C E N Q G	PART NAME & DESCRIPTION	MODEL & QTY			APPLICABLE SERIAL NO.		M / R	V R D
					DT			FROM@-	-@UPTO		
1	MM432045			GASKET ,NOZZLE	6						A
2	MM437-13701			SUPPORT ,NOZZLE	6						
3	F1805-08030			BOLT ,W/WASHER	6						A
4	ME016571			CAP	1						
5	MM436810			HOSE ASSY ,FUEL	6						
5 01	MS602011			HOSE , FUEL	6						
5 02	MS660163			CLIP ,HOSE	12						A
6	MS660163			CLIP ,HOSE	1						A
7	MM430703			CLAMP	7						
8	MM430614			CLAMP	3						
9	F1805-06020			BOLT ,W/WASHER	2						A
10	F1825-06025			BOLT ,W/WASHER	3						A
11	05633-31000			NUT ,FLANGE	1						A
12	32B22-00800			BOLT	1						A
13	32A61-09600			WASHER	1						A
14	05946-01201			WASHER ,SEALING	2						A
15	32B61-09100			PIPE , INJECTION NO.1	1						
16	32B61-09200			PIPE , INJECTION NO.2	1						
17	32B61-09300			PIPE , INJECTION NO.3	1						
18	32B61-09401			PIPE , INJECTION NO.4	1						
19	32B61-09500			PIPE , INJECTION NO.5	1						
20	32B61-09600			PIPE , INJECTION NO.6	1						
21	32B61-09700			PIPE ,FUEL RETURN	1						
22	32B61-21900			BRACKET , INJ PUMP	1						
23	32161-13400			CLAMP	1						
24	32161-13700			SEAT	2						
25	32B61-03701			PLATE	1						
26	F1805-08030			BOLT ,W/WASHER	3						A
27	32A61-11401			FLANGE , INJ PUMP	1						
28	05563-70161			O-RING	1						A
29	05563-70136			O-RING	1						A
30	MS401429			STUD	2						
31	05633-30800			NUT ,FLANGE	2						A
32	F1805-08020			BOLT ,W/WASHER	1						A
33	32A61-08800			BRACKET , INJ PUMP	1						
34	32B61-03801			BRACKET , INJ PUMP	1						
35	F1805-10025			BOLT ,W/WASHER	1						A
36	32B65-17521			PUMP ASSY , INJ	1						
36 01	*			CAP ,TAMPER PROOF	2						
36 02	*			PUMP ASSY	1						

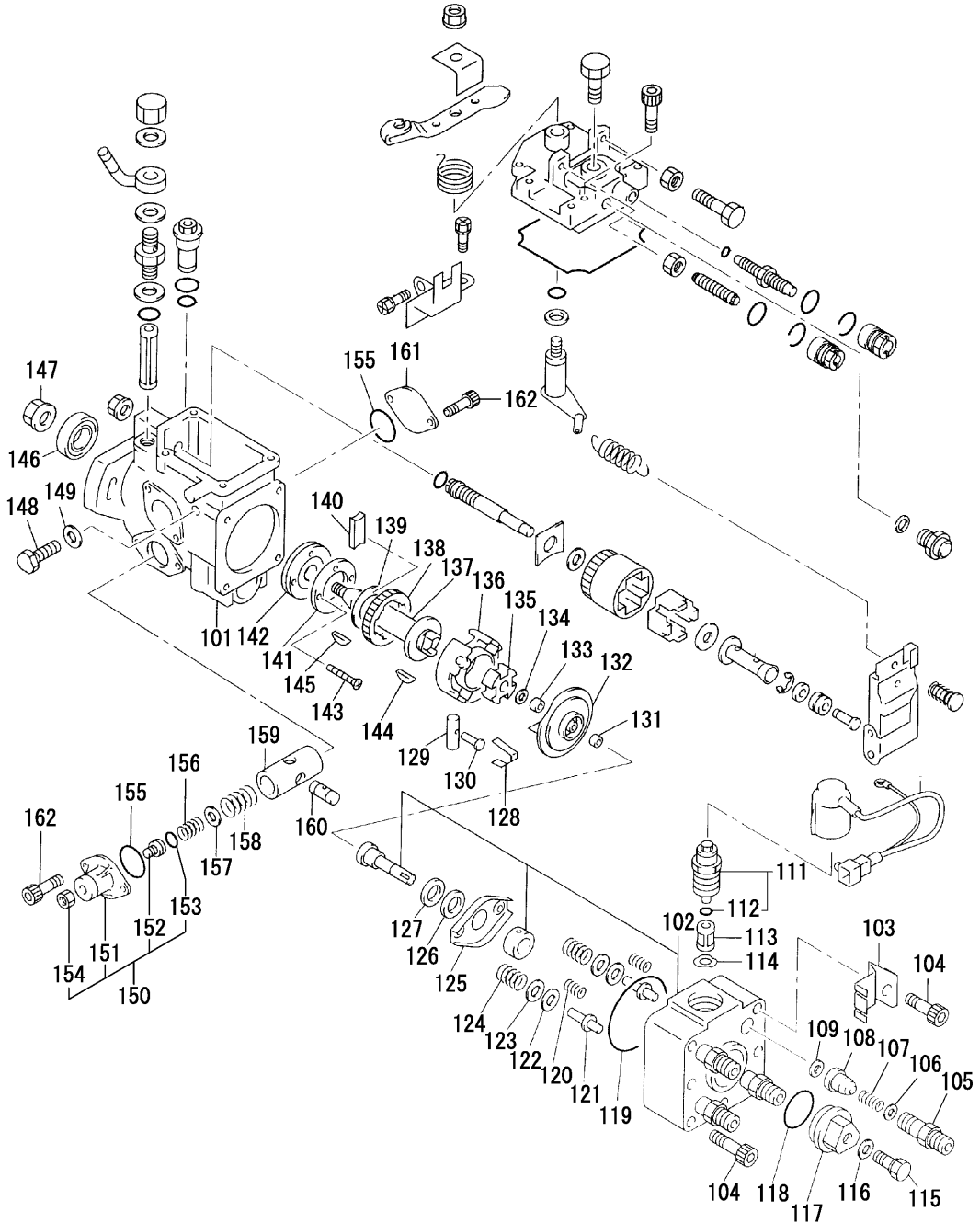
61-02 NOZZLE



REF. -NO.	PART NO.	R / P	S C E N Q G	PART NAME & DESCRIPTION		MODEL & QTY			APPLICABLE SERIAL NO.		M / R	V R D
						DT			FROM@-	-@UPTO		
1	32B61-07020			NOZZLE ASSY	093500-7600 DEN	6					A	
1 01	32A61-07600			HOLDER ASSY	093100-7600 DEN	6						
1 02	09311-07600			BODY SUB ASSY		6						
1 03	09312-10480			PIN,PRESSURE		6						
1 04	09312-70410			SPRING,PRESSURE		6					A	
1 05	09316-41020			NUT,NOZZLE RETAINING		6						
1 06	09317-52180			WASHER	T=1.000	AR					A	
	09317-52190			WASHER	T=1.050	AR					A	
	09317-52200			WASHER	T=1.100	AR					A	
	09317-52210			WASHER	T=1.150	AR					A	
	09317-52220			WASHER	T=1.200	AR					A	
	09317-52230			WASHER	T=1.250	AR					A	
	09317-52240			WASHER	T=1.300	AR					A	
	09317-52250			WASHER	T=1.350	AR					A	
	09317-52260			WASHER	T=1.400	AR					A	
	09317-52270			WASHER	T=1.450	AR					A	
	09317-52280			WASHER	T=1.500	AR					A	
	09317-52290			WASHER	T=1.550	AR					A	
	09317-52300			WASHER	T=1.600	AR					A	
	09317-52310			WASHER	T=1.650	AR					A	
	09317-52320			WASHER	T=1.700	AR					A	
	09317-52330			WASHER	T=1.750	AR					A	
	09317-52340			WASHER	T=1.800	AR					A	
	09317-52420			WASHER	T=1.275	AR					A	
	09317-52430			WASHER	T=1.325	AR					A	
	09317-52440			WASHER	T=1.375	AR					A	
	09317-52450			WASHER	T=1.425	AR					A	
	09317-52460			WASHER	T=1.475	AR					A	
	09317-52530			WASHER	T=0.950	AR					A	
	09317-52560			WASHER	T=0.700	AR					A	
	09317-52570			WASHER	T=0.750	AR					A	
	09317-52580			WASHER	T=0.800	AR					A	
	09317-52590			WASHER	T=0.850	AR					A	
	09317-52600			WASHER	T=0.900	AR					A	
	09317-52610			WASHER	T=0.975	AR					A	
	09317-52620			WASHER	T=1.025	AR					A	
	09317-52630			WASHER	T=1.075	AR					A	
	09317-52640			WASHER	T=1.125	AR					A	
	09317-52650			WASHER	T=1.175	AR					A	
	09317-52660			WASHER	T=1.225	AR					A	
1 07	09322-10150			PACKING,TIP		6						
1 08	94908-23160			PIN,STRAIGHT		12						
1 09	32B61-07200			TIP ASSY,NOZZLE	093400-8080 DEN	6					A	
1	32B61-07020			NOZZLE ASSY	093500-7600 DEN	6					A	

61-03-01 INJECTION PUMP(PART-1)

GROUP NO. 61-03-01 : REF. NO. 101-162
GROUP NO. 61-03-02 : REF. NO. 101-149 — 1

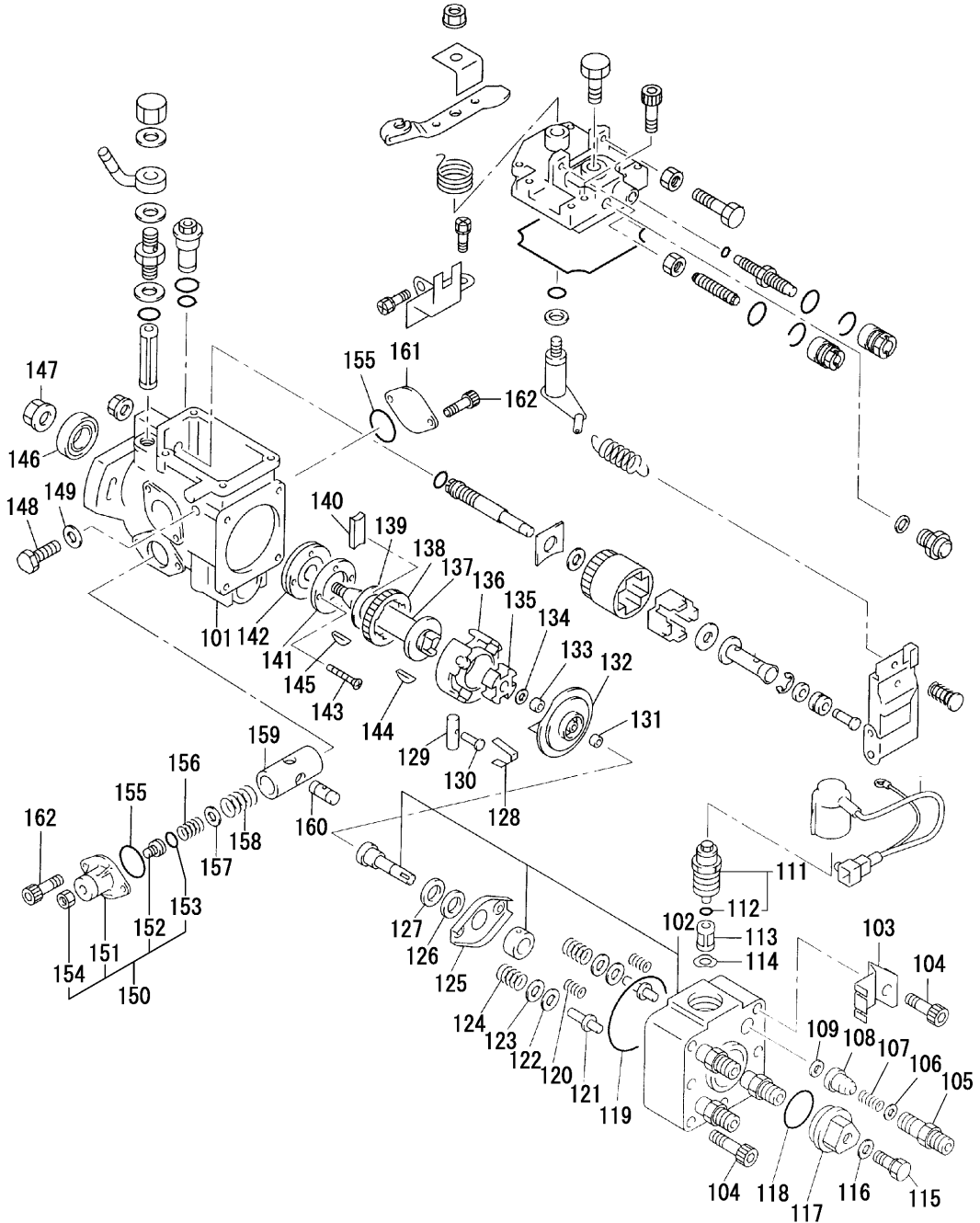


61-03-01 INJECTION PUMP(PART-1)

REF. -NO.	PART NO.	R / P	S C E N Q G	PART NAME & DESCRIPTION		MODEL & QTY			APPLICABLE SERIAL NO.		M / R	V R D
						DT			FROM@-	-@UPTO		
1	32B65-17020			PUMP ASSY, INJ	196000-50800 DEN	1						
1 01	09611-01390			HOUSING SUB ASSY		1						
1 02	09640-01320			HEAD SUB ASSY		1						
1 03	09602-92240			CLIP		1						
1 04	09644-90070			BOLT, SOCKET		4						A
1 05	09642-50190			HOLDER, DELIVERY		6						
1 06	09642-80010			SEAT, DELIVERY		6						
1 07	09642-70050			SPRING, DELIVERY		6						
1 08	09642-00740			VALVE, DELIVERY		6						
1 09	09642-60070			GASKET, DELIVERY		6						A
1 10	09604-51260			WIRE SUB ASSY		1						
1 11	32A61-52100			SOLENOID ASSY	096030-0520 DEN	1						
1 12	09604-90350			O-RING		1						A
1 13	09653-00071			FILTER SUB ASSY		1						
1 14	09606-40110			WASHER		1						A
1 15	09641-80060			BOLT		1						A
1 16	32A61-53800			GASKET	096426-0060 DEN	1						A
1 17	09641-70040			PLUG		1						
1 18	09604-90510			O-RING		1						A
1 19	94914-02980			O-RING		1						A
1 20	09627-90010			SPRING		2						A
1 21	09623-70020			GUIDE SUB ASSY		2						
1 22	09624-80010			SHIM	T=0.50	2						
	09624-80020			SHIM	T=0.80	2						
	09624-80030			SHIM	T=1.00	2						
	09624-80040			SHIM	T=1.20	2						
	09624-80050			SHIM	T=1.50	2						
	09624-80060			SHIM	T=1.80	2						
	09624-80070			SHIM	T=2.00	2						
	09624-80080			SHIM	T=0.90	2						
	09624-80090			SHIM	T=1.10	2						
	09624-80100			SHIM	T=1.30	2						
	09624-80110			SHIM	T=1.40	2						
	09624-80130			SHIM	T=1.70	2						
	09624-80140			SHIM	T=1.90	2						
	09624-80150			SHIM	T=2.10	2						
	09624-80170			SHIM	T=0.85	2						
	09624-80180			SHIM	T=0.95	2						
	09624-80190			SHIM	T=1.05	2						
	09624-80200			SHIM	T=1.15	2						
	09624-80210			SHIM	T=1.25	2						
	09624-80220			SHIM	T=1.60	2						
	09624-80230			SHIM	T=0.20	2						
	09624-80240			SHIM	T=0.30	2						
	09624-80250			SHIM	T=0.40	2						
	09624-80260			SHIM	T=0.60	2						
	09624-80270			SHIM	T=0.70	2						
1 23	09624-60030			SHEET		2						
1 24	09623-60090			SPRING		2						A
1 25	09624-70030			SHEET		1						

61-03-01 INJECTION PUMP(PART-1)

GROUP NO. 61-03-01: REF. NO. 101-162
GROUP NO. 61-03-02: REF. NO. 101-149 — 1

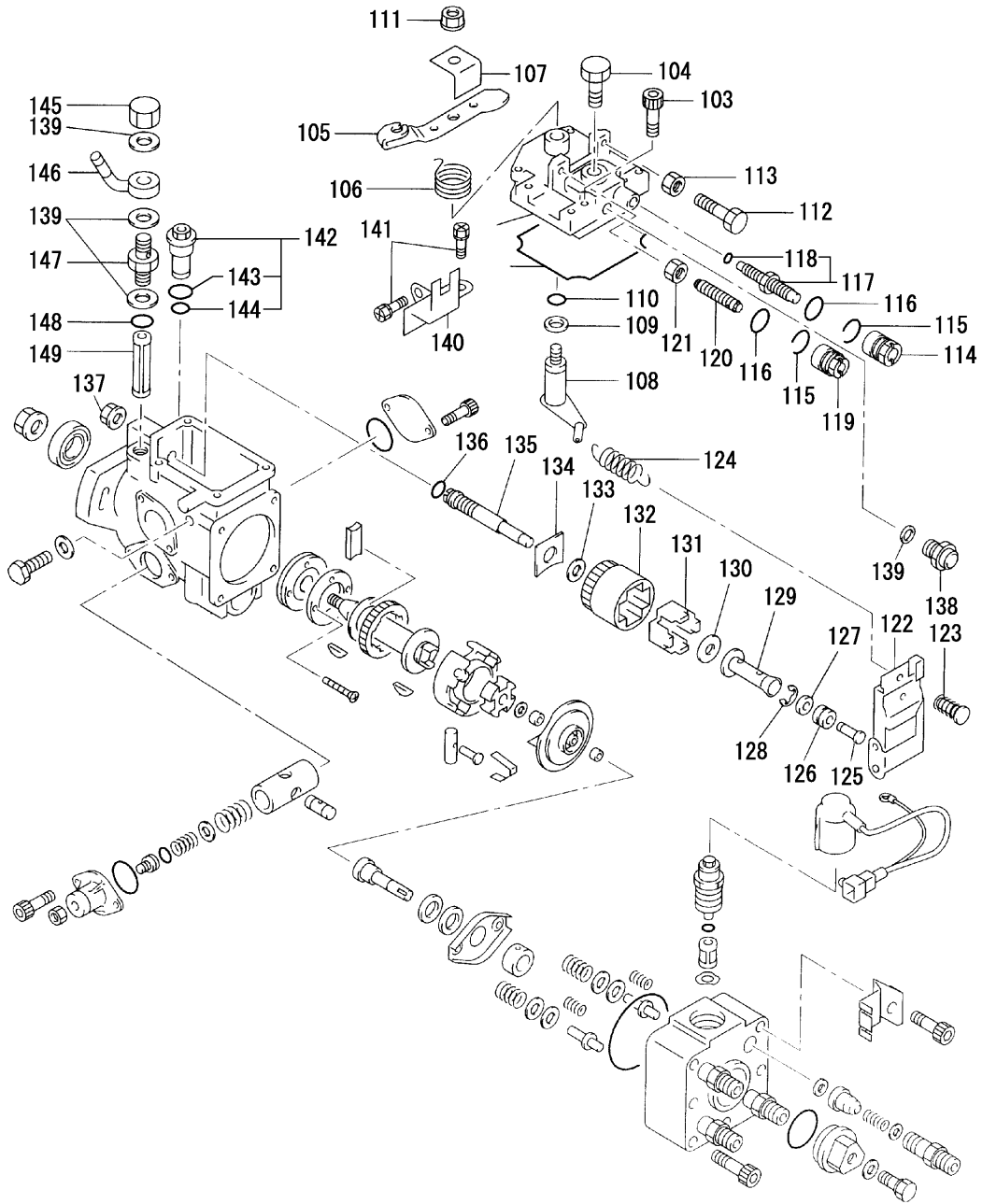


61-03-01 INJECTION PUMP(PART-1)

REF. -NO.	PART NO.	R / P	S C E N Q G	PART NAME & DESCRIPTION	MODEL & QTY			APPLICABLE SERIAL NO.		M / R	V R D
					DT			FROM@-	-@UPTO		
1 26	09624-40040			PLATE, PLUNGER	1						
1 27	09624-50020			PLATE, PLUNGER	1						
1 28	09621-10080			CLIP, TIMER	1						
1 29	09620-50020			PIN, TIMER SLIDE	1						
1 30	09621-60120			STOPPER, TIMER SLIDE	1						
1 31	09640-60020			SHIM	1						
	09640-60750			SHIM	1						
	09640-60910			SHIM	1						
	09640-60510			SHIM	1						
	09640-60580			SHIM	1						
1 32	09623-00340			CAM, PLATE	1						
1 33	09622-50010			SPACER	1						
1 34	09606-40220			WASHER	1						A
1 35	09622-20070			COUPLING	1						
1 36	09618-00280			RING SUB ASSY	1						
1 37	09612-10330			SHAFT, DRIVE	1						
1 38	09612-40030			GEAR, GOVERNOR DRIVE	1						
1 39	09612-50010			WASHER, DRIVE SHAFT	1						
1 40	09612-60020			JOINT, RUBBER	2						
1 41	09614-70052			COVER, FEED PUMP	1						
1 42	09614-00030			PUMP SUB ASSY	1						
1 43	94900-20420			SCREW, COUNTERSUNK	2						A
1 44	94913-00260			KEY, WOODRUFF	1						
1 45	94913-00300			KEY, WOODRUFF	1						
1 46	09603-90040			SEAL, OIL	1						A
1 47	94905-62390			NUT	1						A
1 48	09626-90020			BOLT	2						A
1 49	09642-60130			GASKET	2						A
1 50	09621-00870			COVER SUB ASSY	1						
1 51	09621-80870			COVER, TIMER	1						
1 52	09621-60110			STOPPER, TIMER SLIDE	1						
1 53	09604-90290			O-RING	1						A
1 54	94905-05010			NUT, HEXAGON	1						A
1 55	09604-90400			O-RING	2						A
1 56	09620-81461			SPRING	AR						A
	09620-81481			SPRING	AR						A
	09620-82840			SPRING	AR						A
1 57	09621-40260			WASHER	1						A
1 58	09620-81830			SPRING	2						A
1 59	09619-01660			PISTON ASSY	1						
1 60	09621-30020			SUB PISTON, TIMER	1						
1 61	09621-81030			COVER, TIMER	1						
1 62	09644-90280			BOLT, SOCKET	4						A

61-03-02 INJECTION PUMP(PART-2)

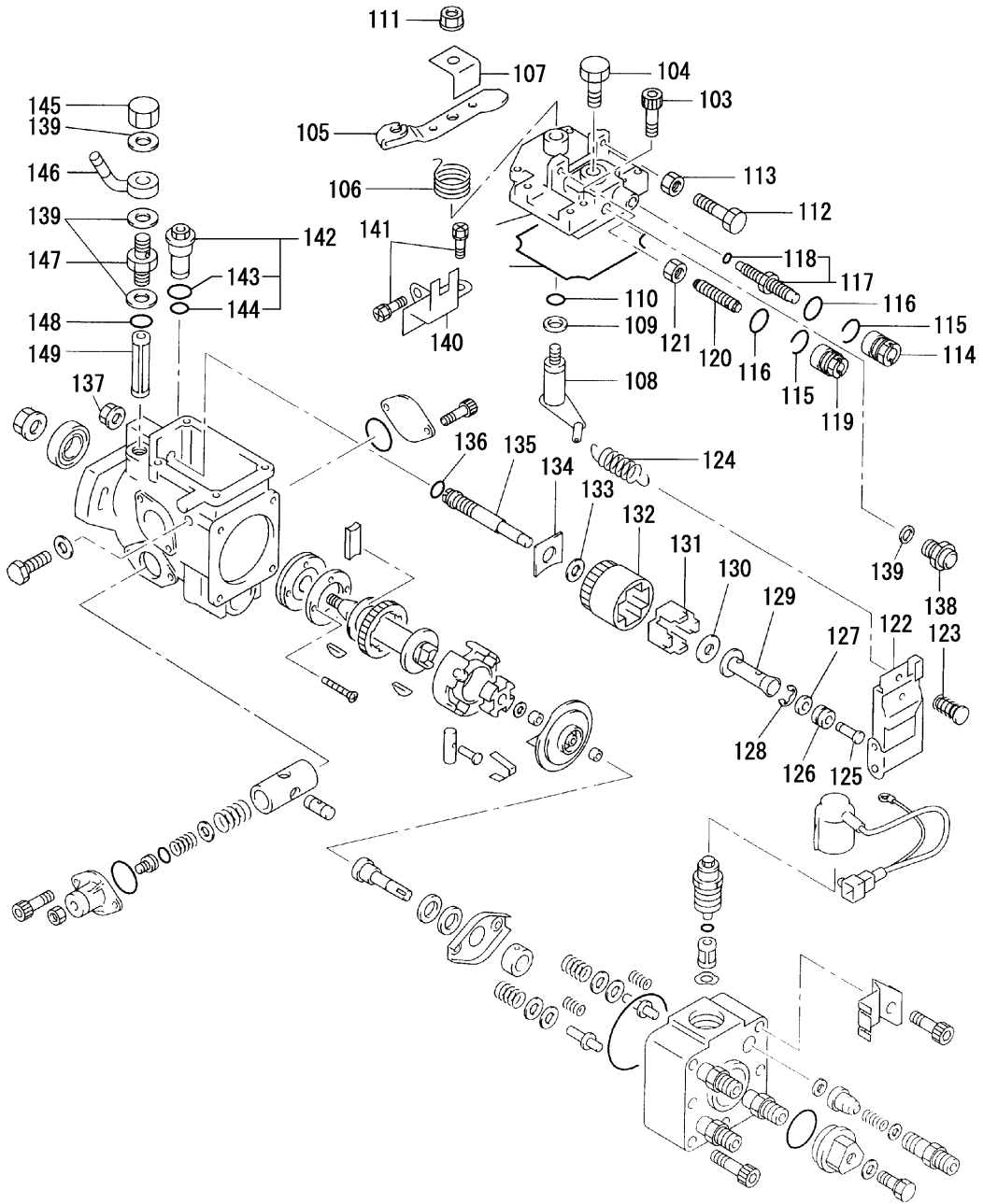
- 48-



61-03-02 INJECTION PUMP(PART-2)

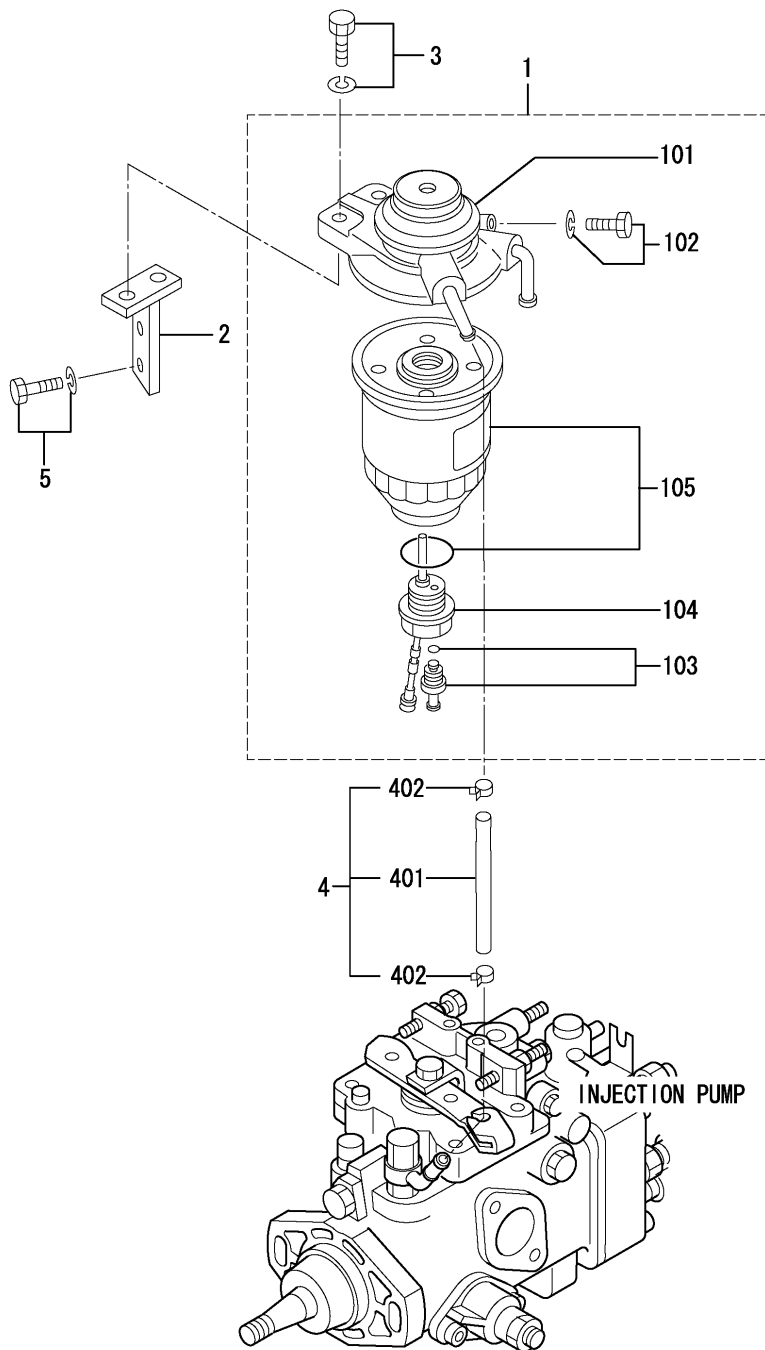
REF.-NO.	PART NO.	R / P	S C E N Q G	PART NAME & DESCRIPTION	MODEL & QTY			APPLICABLE SERIAL NO.		M / R	V R D
					DT			FROM@-	-@UPTO		
1 01	09644-01850			COVER SUB ASSY	1						
1 02	09644-60100			GASKET	1					A	
1 03	09644-90020			BOLT, SOCKET	4					A	
1 04	09602-00180			SCREW, OVERFLOW	1					A	
1 05	09643-67280			LEVER, ADJUSTING MARK728	1						
	09643-67290			LEVER, ADJUSTING MARK729	1						
	09643-67300			LEVER, ADJUSTING MARK730	1						
1 06	09644-41000			SPRING, RETURN	1					A	
1 07	09644-50011			GUIDE, RETURN SPRING	1						
1 08	09645-00480			SHAFT, GOVERNOR MARK31	1						
	09645-00700			SHAFT, GOVERNOR MARK58	1						
1 09	09627-30140			WASHER	1					A	
1 10	09604-90300			O-RING	1					A	
1 11	94905-61680			NUT	1					A	
1 12	94904-50180			BOLT, HEXAGON	1					A	
1 13	90166-06051			NUT, HEXAGON	1					A	
1 14	09644-80500			COLLAR	1						
1 15	97907-21500			RING, SNAP	2					A	
1 16	94914-04060			O-RING	2					A	
1 17	09648-00040			SMOKE SET SUB ASSY	1						
1 18	09604-90470			O-RING	1					A	
1 19	09644-80490			COLLAR SMOKE SET	1						
1 20	09266-40400			SCREW, LEVER STOP	1						
1 21	09634-20010			NUT, LOCK	1					A	
1 22	09627-01890			GOVERNOR ASSY	1						
1 23	09626-80170			SEAT SUB ASSY	1						
1 24	09626-10210			SPRING, SPEED CONTROL	1					A	
1 25	09625-60991			PLUG, GOVERNOR SLEEVE T=2.1	1						
	09625-61001			PLUG, GOVERNOR SLEEVE T=2.2	1						
	09625-61011			PLUG, GOVERNOR SLEEVE T=2.3	1						
	09625-61021			PLUG, GOVERNOR SLEEVE T=2.4	1						
	09625-61031			PLUG, GOVERNOR SLEEVE T=2.5	1						
	09625-61041			PLUG, GOVERNOR SLEEVE T=2.6	1						
	09625-61051			PLUG, GOVERNOR SLEEVE T=2.7	1						
	09625-61061			PLUG, GOVERNOR SLEEVE T=2.8	1						
	09625-61071			PLUG, GOVERNOR SLEEVE T=2.9	1						
	09625-61081			PLUG, GOVERNOR SLEEVE T=3.0	1						
	09625-61091			PLUG, GOVERNOR SLEEVE T=3.1	1						
	09625-61101			PLUG, GOVERNOR SLEEVE T=3.2	1						
	09625-61111			PLUG, GOVERNOR SLEEVE T=3.3	1						
	09625-61121			PLUG, GOVERNOR SLEEVE T=3.4	1						
	09625-61131			PLUG, GOVERNOR SLEEVE T=3.5	1						
	09625-61141			PLUG, GOVERNOR SLEEVE T=3.6	1						
	09625-61151			PLUG, GOVERNOR SLEEVE T=3.7	1						
	09625-61161			PLUG, GOVERNOR SLEEVE T=3.8	1						
	09625-61171			PLUG, GOVERNOR SLEEVE T=3.9	1						
	09625-61181			PLUG, GOVERNOR SLEEVE T=4.0	1						
	09625-61191			PLUG, GOVERNOR SLEEVE T=4.1	1						
	09625-61201			PLUG, GOVERNOR SLEEVE T=4.2	1						
	09625-61211			PLUG, GOVERNOR SLEEVE T=4.3	1						

61-03-02 INJECTION PUMP(PART-2)



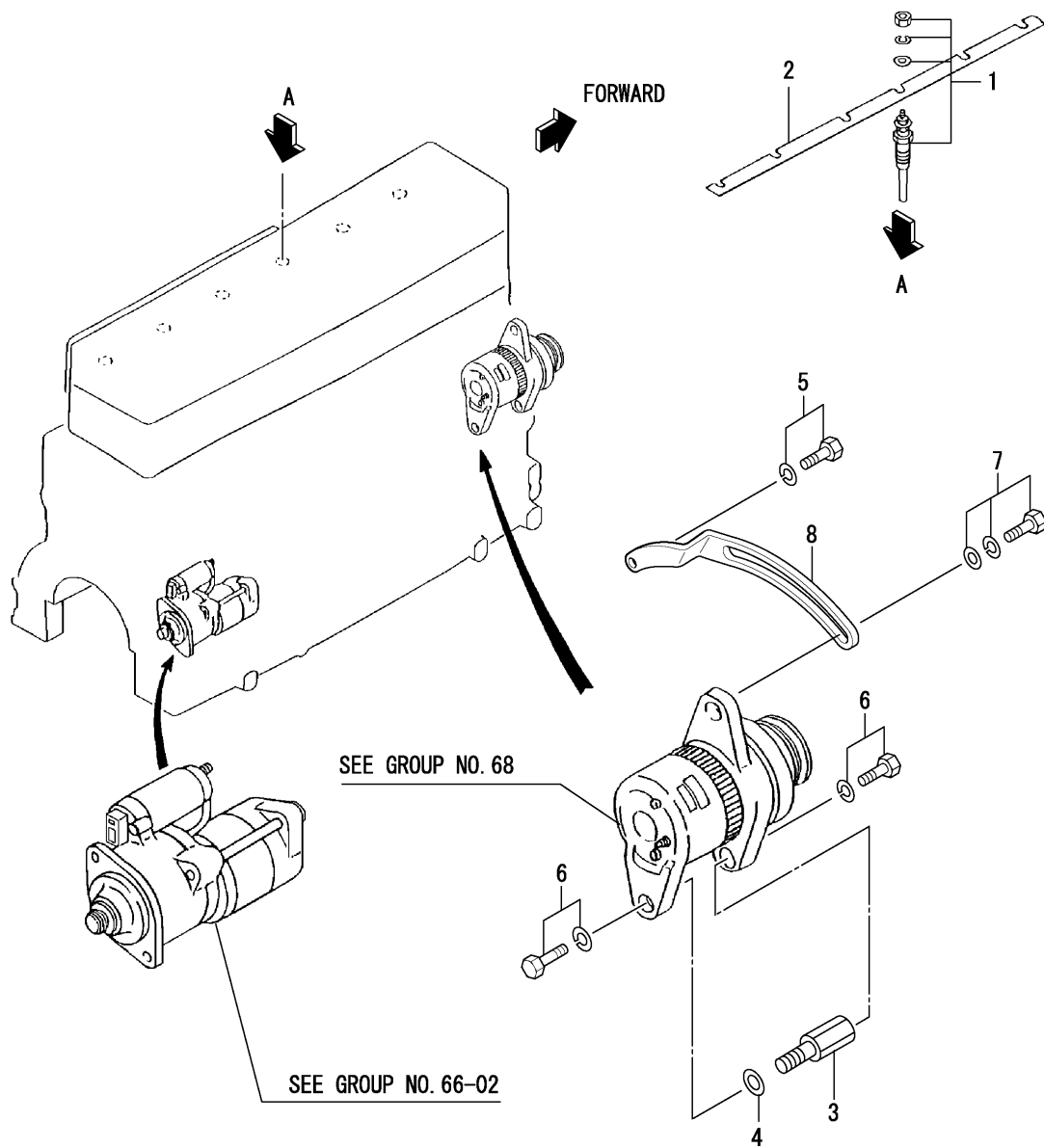
61-03-02 INJECTION PUMP(PART-2)

REF. -NO.	PART NO.	R / P	S C E N Q G	PART NAME & DESCRIPTION	MODEL & QTY			APPLICABLE SERIAL NO.		M / R	V R D
					DT			FROM@-	-@UPTO		
1 25	09625-61221			PLUG, GOVERNOR SLEEVE	T=4.5	1					
	09625-61231			PLUG, GOVERNOR SLEEVE	T=4.6	1					
	09625-61241			PLUG, GOVERNOR SLEEVE	T=4.7	1					
	09625-61251			PLUG, GOVERNOR SLEEVE	T=4.8	1					
	09625-61261			PLUG, GOVERNOR SLEEVE	T=4.9	1					
	09625-61271			PLUG, GOVERNOR SLEEVE	T=5.0	1					
	09625-61281			PLUG, GOVERNOR SLEEVE	T=5.1	1					
	09625-61291			PLUG, GOVERNOR SLEEVE	T=5.2	1					
	09625-61301			PLUG, GOVERNOE SLEEVE	T=5.3	1					
1 26	94910-02860			BEARING, BALL		1					A
1 27	09625-50020			RING		1					A
1 28	90577-02000			E-RING		1					A
1 29	09625-22190			SLEEVE, GOVERNOR	MARK219	1					
	09625-22200			SLEEVE, GOVERNOR	MARK220	1					
	09625-22210			SLEEVE, GOVERNOR	MARK221	1					
1 30	09626-50030			WASHER, FLYWE IGH		1					A
1 31	09626-30050			FLYWE IGH		4					
1 32	09626-00050			HOLDER SUB ASSY		1					
1 33	09626-50020			WASHER, FLYWE IGH		1					A
1 34	09626-60100			WASHER	T=1.05	1					
	09626-60110			WASHER	T=1.25	1					
	09626-60120			WASHER	T=1.45	1					
	09626-60130			WASHER	T=1.65	1					
	09626-60140			WASHER	T=1.85	1					
	09626-60150			WASHER	T=1.55	1					
	09626-60160			WASHER	T=1.75	1					
	09626-60170			WASHER	T=2.05	1					
	09626-60270			WASHER	T=1.30	1					
	09626-60280			WASHER	T=1.40	1					
	09626-60290			WASHER	T=1.50	1					
	09626-60300			WASHER	T=1.60	1					
	09626-60310			WASHER	T=1.15	1					
	09626-60320			WASHER	T=1.20	1					
	09626-60330			WASHER	T=1.70	1					
	09626-60340			WASHER	T=1.80	1					
1 35	09625-00210			SHAFT SUB ASSY		1					
1 36	94914-02930			O-RING		1					A
1 37	09625-40050			NUT		1					A
1 38	09616-10160			BODY, REGULATE VALVE		1					
1 39	09024-10010			WASHER		4					A
1 40	09643-80523			BRACKET		1					
1 41	91518-06141			BOLT, W/WASHER	B/W	2					A
1 42	09616-00270			VALVE SUB ASSY		1					
1 43	09604-90180			O-RING		1					A
1 44	09604-90500			O-RING		1					A
1 45	94905-50300			NUT, CAP		1					A
1 46	09221-80060			NIPPLE SUB ASSY		1					
1 47	94918-00770			SCREW, HOLLOW		1					
1 48	09604-90460			O-RING		1					A
1 49	09653-00111			FILTER SUB ASSY		1					

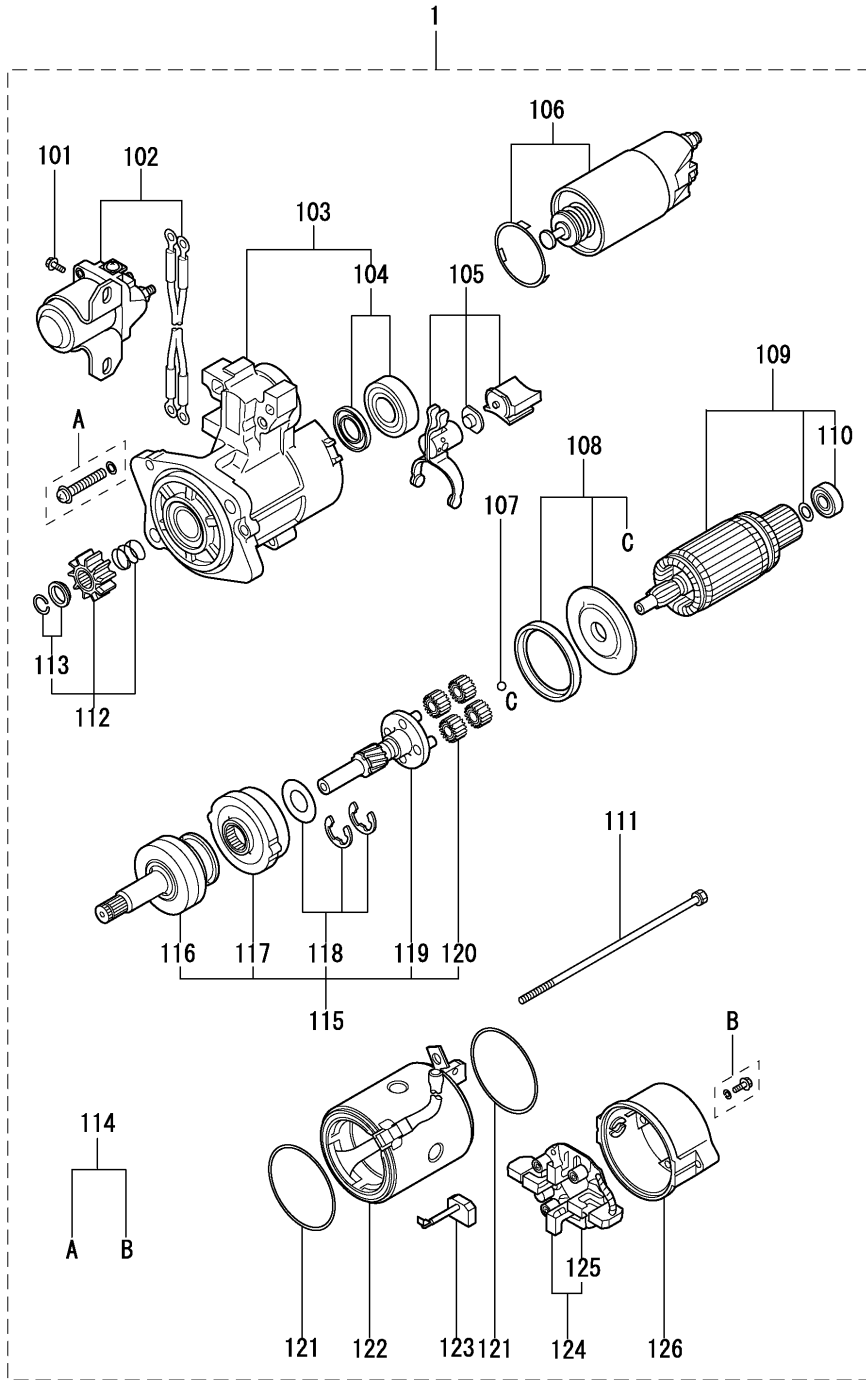


REF. -NO.	PART NO.	R / P	S C E N Q G	PART NAME & DESCRIPTION	MODEL & QTY			APPLICABLE SERIAL NO.		M / R	V R D
					DT			FROM@-	-@UPTO		
1	34462-30030			FILTER ASSY,FUEL	1						
1 01	34462-01050			BODY ASSY	1						
1 02	34462-01060			AIR PLUG SET	1						
1 03	34462-01070			DRAIN PLUG SET	1						
1 04	34462-11030			SENSOR ASSY	1						
1 05	34462-21040			ELEMENT KIT	1						
2	32A62-00601			BRACKET	1						
3	F1805-08030			BOLT,W/WASHER	2						A
4	MM409276			HOSE ASSY,FUEL	1						
4 01	MS603016			HOSE,FUEL	1						
4 02	MS660164			CLIP,HOSE	2						
5	F1805-08020			BOLT,W/WASHER	2						A

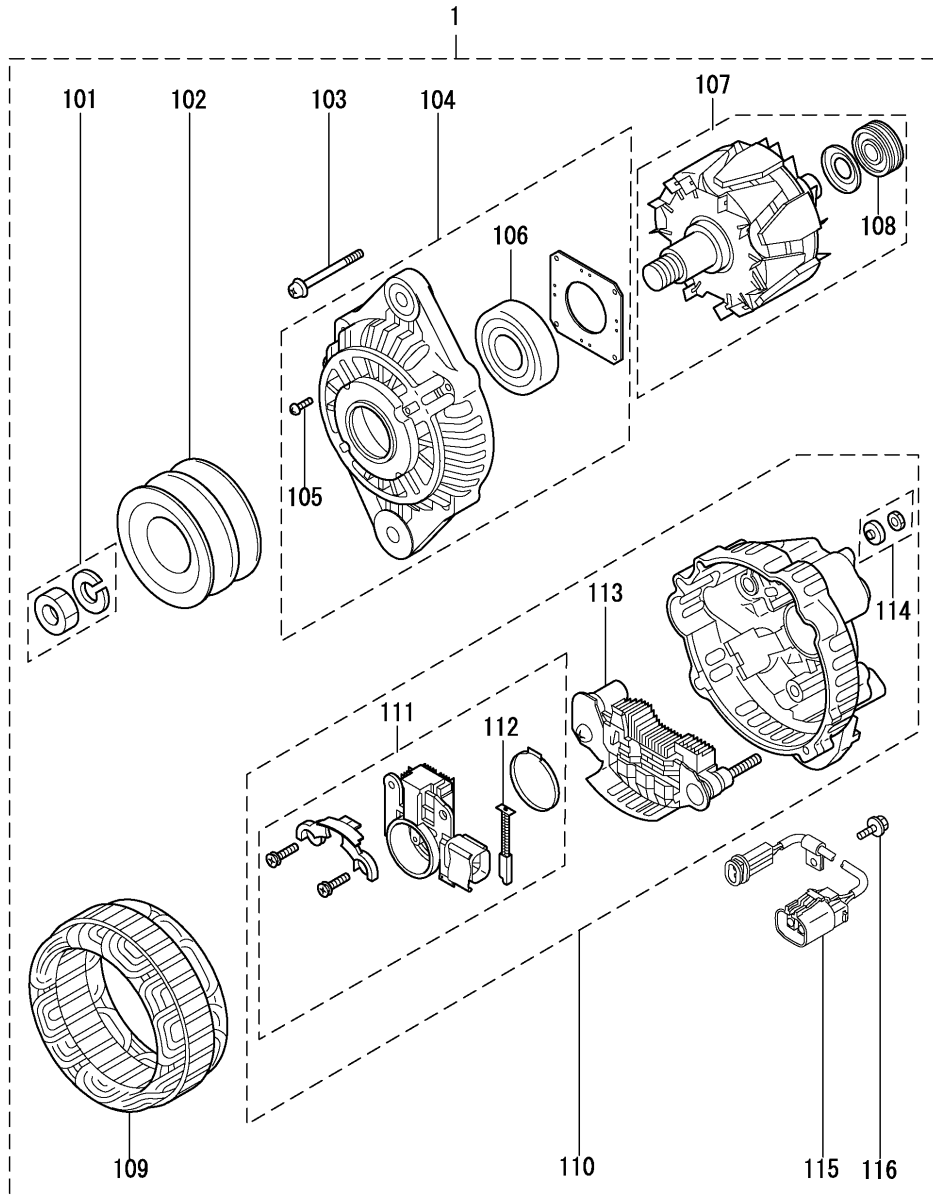
66-01 ELECTRIC PARTS



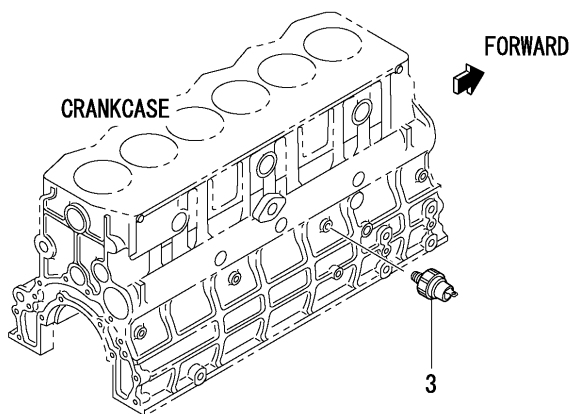
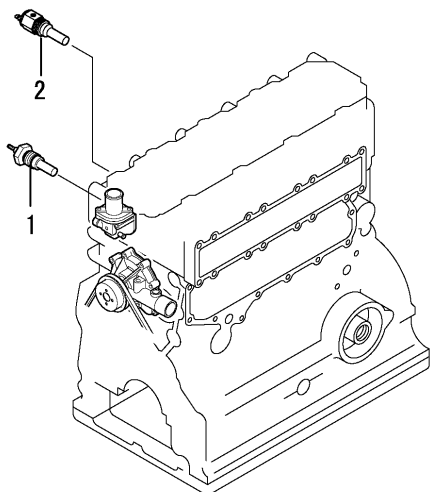
REF. -NO.	PART NO.	R / P	S C E N Q G	PART NAME & DESCRIPTION	MODEL & QTY			APPLICABLE SERIAL NO.		M / R	V R D
					DT			FROM@-	-@UPTO		
1	32A66-07021			PLUG,GLOW	6					A	
2	32B66-01200			PLATE,CONNECTION	1						
3	32A68-00700			SHAFT,ALTERNATOR	1						
4	32A68-00900			SPACER	1						
5	F1805-08020			BOLT,W/WASHER	1						
6	F1805-12030			BOLT,W/WASHER	2						
7	F1825-12025			BOLT,W/WASHER	1						
8	32B68-11701			PLATE,ADJUSTING	1						



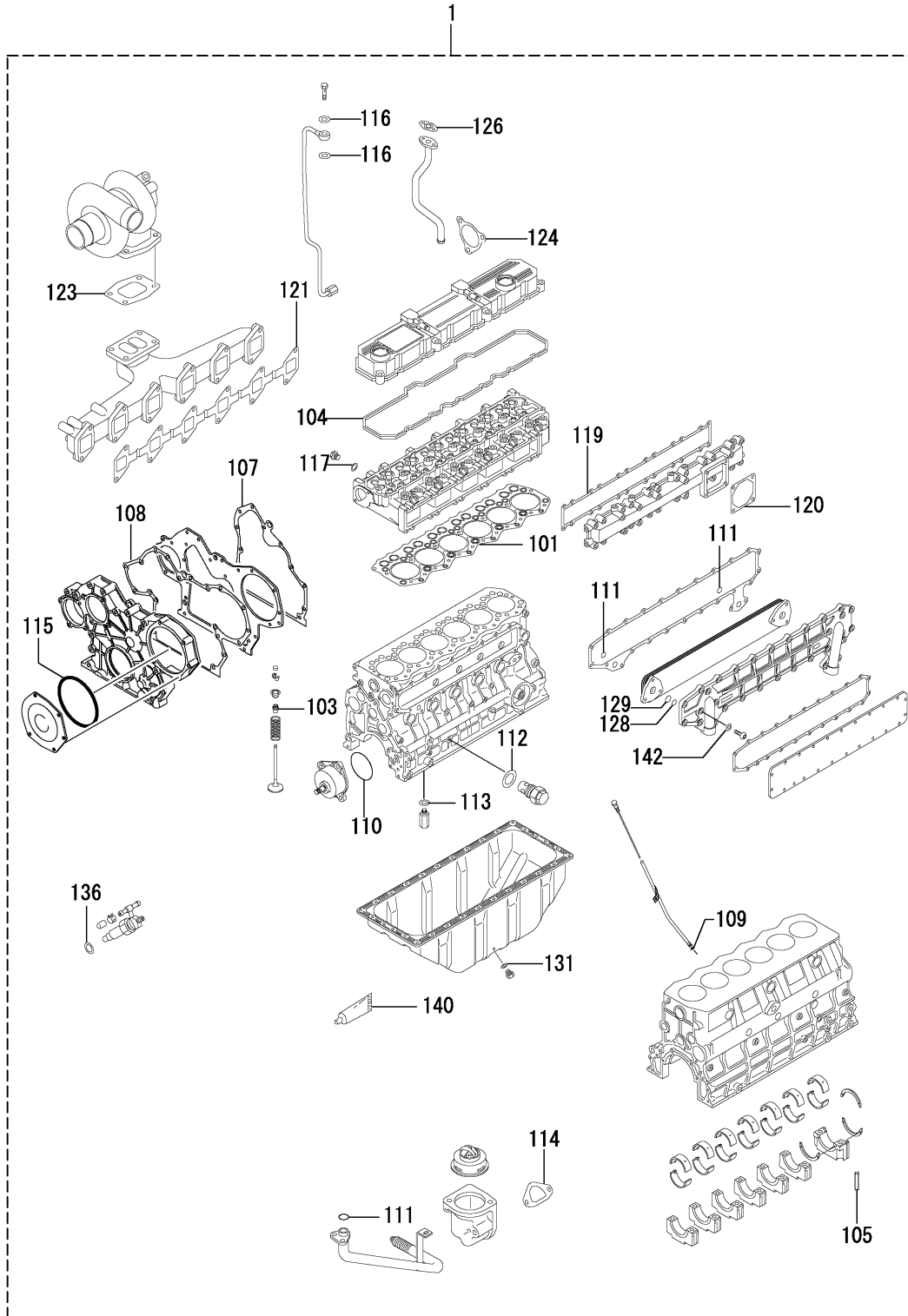
REF. -NO.	PART NO.	R / P	S C E N Q G	PART NAME & DESCRIPTION		MODEL & QTY			APPLICABLE SERIAL NO.		M / R	V R D
						DT			FROM@-	-@UPTO		
1	32B66-20102			STARTER ASSY	M008T60373 MEC	1						
1 01	M414X-07871			SCREW SET		1					A	
1 02	U001X-35092			SWITCH ASSY		1						
1 03	M641X-A7976			BRACKET ASSY,FRONT		1						
1 04	M690X-00671			BEARING SET		1					A	
1 05	M864X-12271			LEVER SET		1						
1 06	M371X-B3571			SWITCH ASSY		1						
1 07	S409S-00008			BALL		1					A	
1 08	M578X-29171			PACKING SET		1					A	
1 09	M105X-43671			ARMATURE ASSY		1						
1 10	S930P-29970			BEARING		1					A	
1 11	M981X-76071			BOLT SET		1					A	
1 12	M605X-99171			PINION SET		1						
1 13	M385X-03771			STOPPER SET		1						
1 14	M414X-07472			SCREW SET		1					A	
1 15	M357X-91874			SHAFT ASSY,CLUTCH		1						
1 16	M191X-67685			CLUTCH,OVER RUNNING		1						
1 17	M135X-01581			GEAR ASSY, INTERNAL		1					A	
1 18	M982X-38871			WASHER SET		1					A	
1 19	M357X-66185			SHAFT ASSY,GEAR		1						
1 20	M230X-00671			GEAR ASSY		4						
1 21	M578D-20901			PACKING		2					A	
1 22	M800X-70471			YOKE ASSY		1						
1 23	M648X-40871			BRUSH		2					A	
1 24	M649X-20671			HOLDER ASSY,BRUSH		1						
1 25	M391X-04271			SPRING,BRUSH		4					A	
1 26	M642X-34071			BRACKET ASSY,REAR		1						



REF. -NO.	PART NO.	R / P	S C E N Q G	PART NAME & DESCRIPTION		MODEL & QTY			APPLICABLE SERIAL NO.		M / R	V R D
						DT			FROM@-	-@UPTO		
1	34368-02200			ALTERNATOR ASSY	A003TN5986 MEC	1						
1 01	A529X-06571			NUT SET		1						
1 02	A629X-50770			PULLEY ASSY		1						
1 03	A414X-19271			BOLT SET		1					A	
1 04	A640X-58670			BRACKET ASSY,FRONT		1						
1 05	A414X-19371			SCREW SET		1					A	
1 06	S930P-37270			BEARING,BALL		1						
1 07	A880X-72770			ROTOR ASSY		1						
1 08	S930P-80770			BEARING,BALL		1						
1 09	A383X-51570			STATOR ASSY		1						
1 10	A642X-33570			BRACKET ASSY,REAR		1						
1 11	A866X-28372			REGULATOR SET		1						
1 12	A647X-50270			BRUSH SET		2					A	
1 13	A860X-50670			RECTIFIER ASSY		1						
1 14	A529X-05571			NUT SET		1						
1 15	A309X-15470			CONNECTOR ASSY		1						
1 16	A715X-05871			BOLT SET		1					A	



REF. -NO.	PART NO.	R / P	S C E N Q G	PART NAME & DESCRIPTION	MODEL & QTY			APPLICABLE SERIAL NO.		M / R	V / D
					DT			FROM@-	-@UPTO		
1	05204-50200			UNIT, SENSOR	1						
2	MC880900			UNIT, OVER HEAT WARIN	1						
3	MC840219			SWITCH, OIL PRESSURE	1						



REF. -NO.	PART NO.	R / P	S C E N Q G	PART NAME & DESCRIPTION	MODEL & QTY			APPLICABLE SERIAL NO.		M / R	V R D
					DT			FROM@-	-@UPTO		
1	32B94-01030			GASKET KIT, OVERHAUL	1						
1 01	32B01-12101			GASKET, CYLINDER HEAD	1						
1 02	32A01-02600			GASKET, HEAD	1						
1 03	32A04-02801			SEAL, VALVE STEM	12						
1 04	32B04-03200			GASKET	1						
1 05	32A07-11700			SEAL, SIDE	2						
1 06	32A07-14201			GASKET, REAR	1						
1 07	32A07-04100			GASKET	1						
1 08	32A11-00200			GASKET	1						
1 09	05507-10110			O-RING	1						
1 10	32A35-00600			O-RING	1						
1 11	F3150-02000			O-RING	3						
1 12	34340-00700			GASKET	1						
1 13	F4202-18000			GASKET	2						
1 14	34446-05300			GASKET	1						
1 15	06016-13140			O-RING	2						
1 16	05946-01001			WASHER, SEAL	2						
1 17	30636-25901			GASKET	1						
1 18	05946-01401			WASHER, SEAL	11						
1 19	32B30-00201			GASKET	1						
1 20	34330-04300			GASKET	2						
1 21	32B32-00200			GASKET	1						
1 22	32A32-01400			GASKET	1						
1 23	36732-04900			GASKET	1						
1 24	34332-00500			GASKET	1						
1 25	F4202-10000			GASKET	6						
1 26	34336-04100			GASKET	1						
1 27	F3150-02600			O-RING	1						
1 28	05507-00280			O-RING	2						
1 29	05507-00400			O-RING	2						
1 30	F3156-09500			O-RING	1						
1 31	F4202-20000			GASKET	1						
1 32	32B45-05400			GASKET	1						
1 33	32B45-05500			GASKET	1						
1 34	32B46-00200			GASKET	1						
1 35	31346-11900			GASKET	1						
1 36	MM432045			GASKET	6						
1 37	06016-13075			O-RING	1						
1 38	05946-00801			GASKET	1						
1 39	05946-01201			WASHER, SEAL	2						
1 40	32A91-05100			GASKET	1						
1 41	32B13-04200			GASKET	1						
1 42	F4202-08000			GASKET	6						
1 43	32B39-00900			GASKET	1						
1 44	34362-01401			GASKET	1						
1 45	34330-04200			GASKET	1						
1 46	06016-13085			O-RING	1						

NUMERICAL PARTS INDEX

PART NO.	GRP NO.	PAREF. GE-NO.	PART NO.	GRP NO.	PAREF. GE-NO.	PART NO.	GRP NO.	PAREF. GE-NO.
A309X-15470	68	59 1 15	F1805-10020	20	21 7	M578D-20901	66-02	57 1 21
A383X-51570	68	59 1 09	F1805-10020	23	23 5	M578X-29171	66-02	57 1 08
A414X-19271	68	59 1 03	F1805-10025	61-01	41 35	M605X-99171	66-02	57 1 12
A414X-19371	68	59 1 05	F1805-12030	66-01	55 6	M641X-A7976	66-02	57 1 03
A529X-05571	68	59 1 14	F1825-06025	61-01	41 10	M642X-34071	66-02	57 1 26
A529X-06571	68	59 1 01	F1825-08016	36-01	31 9	M648X-40871	66-02	57 1 23
A629X-50770	68	59 1 02	F1825-12025	66-01	55 7	M649X-20671	66-02	57 1 24
A640X-58670	68	59 1 04	F2300-06000	36-02	33 13	M690X-00671	66-02	57 1 04
A642X-33570	68	59 1 10	F2320-10000	36-01	31 4	M800X-70471	66-02	57 1 22
A647X-50270	68	59 1 12	F2325-08000	04-01	5 8 02	M864X-12271	66-02	57 1 05
A715X-05871	68	59 1 16	F2515-06000	36-02	33 14	M981X-76071	66-02	57 1 11
A860X-50670	68	59 1 13	F2515-10000	36-01	31 5	M982X-38871	66-02	57 1 18
A866X-28372	68	59 1 11	F2515-12000	20	21 4	MC840219	90	61 3
A880X-72770	68	59 1 07	F2846-05000	07-01	11 9	MC880900	90	61 2
F1035-06020	36-02	33 12	F2846-10000	20	21 1 01	MD000269	07-01	11 14
F1035-08016	25	25 3	F2846-12000	07-01	11 8	MD008784	04-02	7 4
F1035-12045	20	21 3	F2850-04008	07-01	11 10	ME016571	61-01	41 4
F1450-10030	30	27 10	F2870-07022	05	9 2	MF140227	46	39 5 01
F1450-10030	30	27 17	F2870-07022	20	21 1 02	MF522010	04-01	5 8 09
F1805-06016	36-02	33 7	F3150-02000	36-01	31 7	MM316248	01	3 11
F1805-06020	61-01	41 9	F3150-02000	39	35 2	MM316248	46	39 11
F1805-08016	01	3 9	F3150-02000	94	63 1 11	MM409276	62	53 4
F1805-08016	04-02	7 9	F3150-02600	94	63 1 27	MM430614	61-01	41 8
F1805-08016	05	9 4	F3153-07500	25	25 2	MM430703	61-01	41 7
F1805-08016	11	15 4	F3156-09500	94	63 1 30	MM432045	61-01	41 1
F1805-08016	13	17 2	F3202-03000	17	19 8	MM432045	94	63 1 36
F1805-08016	36-01	31 8	F4202-08000	39	35 5	MM436810	61-01	41 5
F1805-08020	01	3 10	F4202-08000	94	63 1 42	MM437-13701	61-01	41 2
F1805-08020	30	27 7	F4202-10000	36-02	33 3	MS401429	61-01	41 30
F1805-08020	36-01	31 3	F4202-10000	94	63 1 25	MS602011	61-01	41 5 01
F1805-08020	46	39 13	F4202-18000	36-01	31 11	MS603016	62	53 4 01
F1805-08020	61-01	41 32	F4202-18000	94	63 1 13	MS660163	61-01	41 5 02
F1805-08020	62	53 5	F4202-20000	13	17 1 01	MS660163	61-01	41 6
F1805-08020	66-01	55 5	F4202-20000	94	63 1 31	MS660164	62	53 4 02
F1805-08025	04-01	5 8 12	F4300-02500	36-02	33 9	MS660174	04-02	7 7
F1805-08025	39	35 3	F4300-03201	04-02	7 11	MS661140	07-01	11 15
F1805-08025	46	39 3 01	F4656-06000	36-02	33 4	MS661142	07-01	11 16
F1805-08030	61-01	41 3	F5005-17001	46	39 3 11	S409S-00008	66-02	57 1 07
F1805-08030	61-01	41 26	F8004-06008	25	25 4	S930P-29970	66-02	57 1 10
F1805-08030	62	53 3	M105X-43671	66-02	57 1 09	S930P-37270	68	59 1 06
F1805-08035	46	39 3 02	M135X-01581	66-02	57 1 17	S930P-80770	68	59 1 08
F1805-08040	04-02	7 3	M191X-67685	66-02	57 1 16	U001X-35092	66-02	57 1 02
F1805-08040	30	27 3	M230X-00671	66-02	57 1 20	00665-02048	33	29 1 01
F1805-08045	46	39 2	M357X-66185	66-02	57 1 19	04826-21200	04-01	5 8 08
F1805-08045	46	39 8	M357X-91874	66-02	57 1 15	04826-21800	07-01	11 2 01
F1805-08050	30	27 14	M371X-B3571	66-02	57 1 06	04826-21800	07-01	11 3
F1805-08055	11	15 6	M385X-03771	66-02	57 1 13	04826-22000	01	3 2 01
F1805-08065	11	15 9	M391X-04271	66-02	57 1 25	04826-22500	01	3 2 02
F1805-08065	30	27 6	M414X-07472	66-02	57 1 14	04826-23500	07-01	11 2 02
F1805-08075	46	39 7	M414X-07871	66-02	57 1 01	04827-72100	39	35 4 01

NUMERICAL PARTS INDEX

PART NO.	GRP NO.	PAREF-GE	REF-NO.	PART NO.	GRP NO.	PAREF-GE	REF-NO.	PART NO.	GRP NO.	PAREF-GE	REF-NO.
05204-50200	90	61	1	09317-52340	61-02	43	1 06	09621-00870	61-03-01	47	1 50
05317-50701	30	27	19	09317-52420	61-02	43	1 06	09621-10080	61-03-01	47	1 28
05317-50901	30	27	20	09317-52430	61-02	43	1 06	09621-30020	61-03-01	47	1 60
05317-72600	04-02	7	6	09317-52440	61-02	43	1 06	09621-40260	61-03-01	47	1 57
05507-00280	39	35	6	09317-52450	61-02	43	1 06	09621-60110	61-03-01	47	1 52
05507-00280	94	63	1 28	09317-52460	61-02	43	1 06	09621-60120	61-03-01	47	1 30
05507-00400	39	35	7	09317-52530	61-02	43	1 06	09621-80870	61-03-01	47	1 51
05507-00400	94	63	1 29	09317-52560	61-02	43	1 06	09621-81030	61-03-01	47	1 61
05507-10110	07-01	11	18	09317-52570	61-02	43	1 06	09622-20070	61-03-01	47	1 35
05507-10110	13	17	5	09317-52580	61-02	43	1 06	09622-50010	61-03-01	47	1 33
05507-10110	94	63	1 09	09317-52590	61-02	43	1 06	09623-00340	61-03-01	47	1 32
05563-70136	61-01	41	29	09317-52600	61-02	43	1 06	09623-60090	61-03-01	45	1 24
05563-70161	61-01	41	28	09317-52610	61-02	43	1 06	09623-70020	61-03-01	45	1 21
05605-01410	07-01	11	12	09317-52620	61-02	43	1 06	09624-40040	61-03-01	47	1 26
05633-30800	61-01	41	31	09317-52630	61-02	43	1 06	09624-50020	61-03-01	47	1 27
05633-31000	61-01	41	11	09317-52640	61-02	43	1 06	09624-60030	61-03-01	45	1 23
05910-20046	46	39	14	09317-52650	61-02	43	1 06	09624-70030	61-03-01	45	1 25
05946-00801	94	63	1 38	09317-52660	61-02	43	1 06	09624-80010	61-03-01	45	1 22
05946-01001	94	63	1 16	09322-10150	61-02	43	1 07	09624-80020	61-03-01	45	1 22
05946-01201	61-01	41	14	09602-00180	61-03-02	49	1 04	09624-80030	61-03-01	45	1 22
05946-01201	94	63	1 39	09602-92240	61-03-01	45	1 03	09624-80040	61-03-01	45	1 22
05946-01401	94	63	1 18	09603-90040	61-03-01	47	1 46	09624-80050	61-03-01	45	1 22
06016-13075	94	63	1 37	09604-51260	61-03-01	45	1 10	09624-80060	61-03-01	45	1 22
06016-13080	25	25	7	09604-90180	61-03-02	51	1 43	09624-80070	61-03-01	45	1 22
06016-13085	94	63	1 46	09604-90290	61-03-01	47	1 53	09624-80080	61-03-01	45	1 22
06016-13140	11	15	8	09604-90300	61-03-02	49	1 10	09624-80090	61-03-01	45	1 22
06016-13140	94	63	1 15	09604-90350	61-03-01	45	1 12	09624-80100	61-03-01	45	1 22
09024-10010	61-03-02	51	1 39	09604-90400	61-03-01	47	1 55	09624-80110	61-03-01	45	1 22
09221-80060	61-03-02	51	1 46	09604-90460	61-03-02	51	1 48	09624-80130	61-03-01	45	1 22
09266-40400	61-03-02	49	1 20	09604-90470	61-03-02	49	1 18	09624-80140	61-03-01	45	1 22
09311-07600	61-02	43	1 02	09604-90500	61-03-02	51	1 44	09624-80150	61-03-01	45	1 22
09312-10480	61-02	43	1 03	09604-90510	61-03-01	45	1 18	09624-80170	61-03-01	45	1 22
09312-70410	61-02	43	1 04	09606-40110	61-03-01	45	1 14	09624-80180	61-03-01	45	1 22
09316-41020	61-02	43	1 05	09606-40220	61-03-01	47	1 34	09624-80190	61-03-01	45	1 22
09317-52180	61-02	43	1 06	09611-01390	61-03-01	45	1 01	09624-80200	61-03-01	45	1 22
09317-52190	61-02	43	1 06	09612-10330	61-03-01	47	1 37	09624-80210	61-03-01	45	1 22
09317-52200	61-02	43	1 06	09612-40030	61-03-01	47	1 38	09624-80220	61-03-01	45	1 22
09317-52210	61-02	43	1 06	09612-50010	61-03-01	47	1 39	09624-80230	61-03-01	45	1 22
09317-52220	61-02	43	1 06	09612-60020	61-03-01	47	1 40	09624-80240	61-03-01	45	1 22
09317-52230	61-02	43	1 06	09614-00030	61-03-01	47	1 42	09624-80250	61-03-01	45	1 22
09317-52240	61-02	43	1 06	09614-70052	61-03-01	47	1 41	09624-80260	61-03-01	45	1 22
09317-52250	61-02	43	1 06	09616-00270	61-03-02	51	1 42	09624-80270	61-03-01	45	1 22
09317-52260	61-02	43	1 06	09616-10160	61-03-02	51	1 38	09625-00210	61-03-02	51	1 35
09317-52270	61-02	43	1 06	09618-00280	61-03-01	47	1 36	09625-22190	61-03-02	51	1 29
09317-52280	61-02	43	1 06	09619-01660	61-03-01	47	1 59	09625-22200	61-03-02	51	1 29
09317-52290	61-02	43	1 06	09620-50020	61-03-01	47	1 29	09625-22210	61-03-02	51	1 29
09317-52300	61-02	43	1 06	09620-81461	61-03-01	47	1 56	09625-40050	61-03-02	51	1 37
09317-52310	61-02	43	1 06	09620-81481	61-03-01	47	1 56	09625-50020	61-03-02	51	1 27
09317-52320	61-02	43	1 06	09620-81830	61-03-01	47	1 58	09625-60991	61-03-02	49	1 25
09317-52330	61-02	43	1 06	09620-82840	61-03-01	47	1 56	09625-61001	61-03-02	49	1 25

NUMERICAL PARTS INDEX

PART NO.	GRP NO.	PAREF. GE-NO.	PART NO.	GRP NO.	PAREF. GE-NO.	PART NO.	GRP NO.	PAREF. GE-NO.
09625-61011	61-03-02	49 1 25	09626-60340	61-03-02	51 1 34	32161-13700	61-01	41 24
09625-61021	61-03-02	49 1 25	09626-80170	61-03-02	49 1 23	32332-00801	30	27 11
09625-61031	61-03-02	49 1 25	09626-90020	61-03-01	47 1 48	32332-00801	30	27 18
09625-61041	61-03-02	49 1 25	09627-01890	61-03-02	49 1 22	32A01-01400	01	3 5
09625-61051	61-03-02	49 1 25	09627-30140	61-03-02	49 1 09	32A01-01600	01	3 2 03
09625-61061	61-03-02	49 1 25	09627-90010	61-03-01	45 1 20	32A01-02501	01	3 8
09625-61071	61-03-02	49 1 25	09634-20010	61-03-02	49 1 21	32A01-02600	94	63 1 02
09625-61081	61-03-02	49 1 25	09640-01320	61-03-01	45 1 02	32A01-02700	01	3 6
09625-61091	61-03-02	49 1 25	09640-60020	61-03-01	47 1 31	32A01-02800	01	3 7
09625-61101	61-03-02	49 1 25	09640-60510	61-03-01	47 1 31	32A01-03100	01	3 2 04
09625-61111	61-03-02	49 1 25	09640-60580	61-03-01	47 1 31	32A01-03200	01	3 2 05
09625-61121	61-03-02	49 1 25	09640-60750	61-03-01	47 1 31	32A04-02401	04-01	5 8 04
09625-61131	61-03-02	49 1 25	09640-60910	61-03-01	47 1 31	32A04-02801	04-01	5 7
09625-61141	61-03-02	49 1 25	09641-70040	61-03-01	45 1 17	32A04-02801	94	63 1 03
09625-61151	61-03-02	49 1 25	09641-80060	61-03-01	45 1 15	32A04-04701	04-01	5 8 10
09625-61161	61-03-02	49 1 25	09642-00740	61-03-01	45 1 08	32A04-04801	04-01	5 8 11
09625-61171	61-03-02	49 1 25	09642-50190	61-03-01	45 1 05	32A04-20100	04-01	5 1
09625-61181	61-03-02	49 1 25	09642-60070	61-03-01	45 1 09	32A04-21100	04-01	5 2
09625-61191	61-03-02	49 1 25	09642-60130	61-03-01	47 1 49	32A04-22010	04-01	5 8 01
09625-61201	61-03-02	49 1 25	09642-70050	61-03-01	45 1 07	32A05-02101	05	9 5
09625-61211	61-03-02	49 1 25	09642-80010	61-03-01	45 1 06	32A05-13100	05	9 6
09625-61221	61-03-02	51 1 25	09643-67280	61-03-02	49 1 05	32A07-01501	07-01	11 7
09625-61231	61-03-02	51 1 25	09643-67290	61-03-02	49 1 05	32A07-01800	07-01	11 5
09625-61241	61-03-02	51 1 25	09643-67300	61-03-02	49 1 05	32A07-02600	07-01	11 2 05
09625-61251	61-03-02	51 1 25	09643-80523	61-03-02	51 1 40	32A07-04100	11	15 3
09625-61261	61-03-02	51 1 25	09644-01850	61-03-02	49 1 01	32A07-04100	94	63 1 07
09625-61271	61-03-02	51 1 25	09644-41000	61-03-02	49 1 06	32A07-11700	07-01	11 11
09625-61281	61-03-02	51 1 25	09644-50011	61-03-02	49 1 07	32A07-11700	94	63 1 05
09625-61291	61-03-02	51 1 25	09644-60100	61-03-02	49 1 02	32A07-14201	94	63 1 06
09625-61301	61-03-02	51 1 25	09644-80490	61-03-02	49 1 19	32A11-00200	94	63 1 08
09626-00050	61-03-02	51 1 32	09644-80500	61-03-02	49 1 14	32A11-01100	11	15 7
09626-10210	61-03-02	49 1 24	09644-90020	61-03-02	49 1 03	32A11-02901	25	25 1
09626-30050	61-03-02	51 1 31	09644-90070	61-03-01	45 1 04	32A11-04010	11	15 10
09626-50020	61-03-02	51 1 33	09644-90280	61-03-01	47 1 62	32A11-22201	11	15 5
09626-50030	61-03-02	51 1 30	09645-00480	61-03-02	49 1 08	32A11-32102	11	15 2
09626-60100	61-03-02	51 1 34	09645-00700	61-03-02	49 1 08	32A11-33200	11	15 1
09626-60110	61-03-02	51 1 34	09648-00040	61-03-02	49 1 17	32A17-02010	17	19 4
09626-60120	61-03-02	51 1 34	09653-00071	61-03-01	45 1 13	32A17-02020	17	19 5
09626-60130	61-03-02	51 1 34	09653-00111	61-03-02	51 1 49	32A17-02030	17	19 6
09626-60140	61-03-02	51 1 34	30436-52900	36-02	33 11	32A17-03100	17	19 1
09626-60150	61-03-02	51 1 34	30436-53501	36-02	33 2	32A17-03200	17	19 2
09626-60160	61-03-02	51 1 34	30604-21402	04-01	5 3	32A17-03300	17	19 3
09626-60170	61-03-02	51 1 34	30604-31601	04-01	5 4	32A17-08300	17	19 7
09626-60270	61-03-02	51 1 34	30619-10501	17	19 9 01	32A19-00012	17	19 9
09626-60280	61-03-02	51 1 34	30636-25901	01	3 12	32A19-00400	17	19 9 04
09626-60290	61-03-02	51 1 34	30636-25901	46	39 12	32A19-00501	17	19 9 05
09626-60300	61-03-02	51 1 34	30636-25901	94	63 1 17	32A20-02901	20	21 1 03
09626-60310	61-03-02	51 1 34	31304-11700	04-01	5 6	32A21-00900	20	21 5 01
09626-60320	61-03-02	51 1 34	31346-11900	94	63 1 35	32A23-00200	20	21 1 04
09626-60330	61-03-02	51 1 34	32161-13400	61-01	41 23	32A23-01200	23	23 1

NUMERICAL PARTS INDEX

PART NO.	GRP NO.	PAREF. GE-NO.	PART NO.	GRP NO.	PAREF. GE-NO.	PART NO.	GRP NO.	PAREF. GE-NO.
32A23-03030	23	23 3	32B09-08101	07-02	13 1	32B61-09300	61-01	41 17
32A23-03200	23	23 3 01	32B09-08201	07-02	13 2	32B61-09401	61-01	41 18
32A23-03500	07-01	11 13	32B09-08301	07-02	13 3	32B61-09500	61-01	41 19
32A23-05700	23	23 2	32B13-00010	13	17 1	32B61-09600	61-01	41 20
32A23-07100	25	25 6	32B13-00200	13	17 1 02	32B61-09700	61-01	41 21
32A23-24101	25	25 5	32B13-04200	94	63 1 41	32B61-21900	61-01	41 22
32A32-01400	94	63 1 22	32B19-09011	17	19 10	32B65-17020	61-03-01	45 1
32A35-00600	36-01	31 2	32B19-09021	17	19 11	32B65-17521	61-01	41 36
32A35-00600	94	63 1 10	32B19-09031	17	19 12	32B66-01200	66-01	55 2
32A35-22202	23	23 6	32B19-09041	17	19 13	32B66-20102	66-02	57 1
32A36-00011	36-01	31 10	32B20-10020	20	21 1	32B68-11701	66-01	55 8
32A36-00500	25	25 8	32B20-11201	20	21 2	32B94-01030	94	63 1
32A36-05012	40	37 1	32B21-10030	20	21 5	32C04-04501	04-01	5 8 05
32A36-10400	25	25 9	32B22-00800	61-01	41 12	32C13-00900	07-01	11 17
32A40-01100	40	37 4	32B30-00201	30	27 2	34243-01200	04-02	7 10
32A43-02900	04-02	7 12	32B30-00201	94	63 1 19	34307-02100	07-01	11 6
32A45-00300	46	39 3 07	32B30-00500	30	27 1	34307-02802	07-01	11 2 07
32A45-00400	46	39 3 08	32B30-01102	30	27 4	34307-02901	07-01	11 2 08
32A45-00500	46	39 1	32B30-04300	30	27 15	34307-12701	07-01	11 2 09
32A46-00900	46	39 9	32B32-00200	30	27 9	34323-00801	23	23 4
32A46-01101	46	39 5 02	32B32-00200	94	63 1 21	34330-04200	94	63 1 45
32A46-01400	46	39 5 03	32B32-00501	30	27 8	34330-04300	30	27 5
32A46-02100	46	39 5 04	32B32-00901	30	27 12	34330-04300	94	63 1 20
32A46-03100	46	39 10	32B35-00012	36-01	31 1	34332-00500	94	63 1 24
32A46-10030	46	39 5 05	32B35-06200	36-01	31 12	34332-21301	30	27 13
32A46-20040	46	39 5	32B35-15100	36-01	31 6	34333-01401	36-02	33 8
32A61-07600	61-02	43 1 01	32B36-04100	36-02	33 1	34336-04100	36-02	33 6
32A61-08800	61-01	41 33	32B36-04200	36-02	33 5	34336-04100	94	63 1 26
32A61-09600	61-01	41 13	32B39-00100	39	35 8	34340-00700	40	37 2
32A61-11401	61-01	41 27	32B39-00202	39	35 4	34340-00700	94	63 1 12
32A61-52100	61-03-01	45 1 11	32B39-00501	39	35 9	34362-01401	94	63 1 44
32A61-53800	61-03-01	45 1 16	32B39-00800	39	35 1	34368-02200	68	59 1
32A62-00601	62	53 2	32B39-00900	94	63 1 43	34404-02901	04-01	5 5
32A66-07021	66-01	55 1	32B40-00100	40	37 3	34405-00800	05	9 3
32A68-00700	66-01	55 3	32B42-02500	13	17 3	34407-12601	36-02	33 10
32A68-00900	66-01	55 4	32B42-10700	13	17 4	34446-05300	46	39 6
32A91-05100	94	63 1 40	32B43-01401	04-02	7 8	34446-05300	94	63 1 14
32B01-06040	01	3 1	32B43-11600	04-02	7 5	34462-01050	62	53 1 01
32B01-12101	01	3 4	32B45-02101	46	39 4	34462-01060	62	53 1 02
32B01-12101	94	63 1 01	32B45-05400	94	63 1 32	34462-01070	62	53 1 03
32B04-03200	04-02	7 2	32B45-05500	94	63 1 33	34462-11030	62	53 1 04
32B04-03200	94	63 1 04	32B45-10031	46	39 3	34462-21040	62	53 1 05
32B04-04011	04-01	5 8 06	32B46-00200	94	63 1 34	34462-30030	62	53 1
32B04-06010	04-02	7 1	32B61-03701	61-01	41 25	34722-10300	20	21 6
32B05-05102	05	9 1	32B61-03801	61-01	41 34	36732-04900	30	27 16
32B07-04062	07-01	11 1	32B61-07020	61-02	43 1	36732-04900	94	63 1 23
32B09-00010	07-02	13 4	32B61-07020	61-02	43 1	49168-23101	33	29 1 05
32B09-00020	07-02	13 5	32B61-07200	61-02	43 1 09	49168-56100	33	29 1 08
32B09-00030	07-02	13 6	32B61-09100	61-01	41 15	49179-02240	33	29 1
32B09-00040	07-02	13 7	32B61-09200	61-01	41 16	49179-08600	33	29 1 04

NUMERICAL PARTS INDEX

PART NO.	GRP NO.	PAREF. GE-NO.	PART NO.	GRP NO.	PAREF. GE-NO.	PART NO.	GRP NO.	PAREF. GE-NO.
49179-17821	33	29 1 07						
49179-57860	33	29 1 03						
49184-14000	33	29 1 06						
90166-06051	61-03-02	49 1 13						
90577-02000	61-03-02	51 1 28						
91518-06141	61-03-02	51 1 41						
94900-20420	61-03-01	47 1 43						
94904-50180	61-03-02	49 1 12						
94905-05010	61-03-01	47 1 54						
94905-50300	61-03-02	51 1 45						
94905-61680	61-03-02	49 1 11						
94905-62390	61-03-01	47 1 47						
94908-23160	61-02	43 1 08						
94910-02860	61-03-02	51 1 26						
94913-00260	61-03-01	47 1 44						
94913-00300	61-03-01	47 1 45						
94914-02930	61-03-02	51 1 36						
94914-02980	61-03-01	45 1 19						
94914-04060	61-03-02	49 1 16						
94918-00770	61-03-02	51 1 47						
97907-21500	61-03-02	49 1 15						

TABLE OF BOLT ,W/WASHER

BOLT ,W/WASHER	BOLT/WASHER	BOLT ,W/WASHER	BOLT/WASHER	BOLT ,W/WASHER	BOLT/WASHER
F1805-06010	F1035-06010 F2515-06000	F1805-06035	F1035-06035 F2515-06000	F1805-08018	F1035-08018 F2515-08000
F1805-06012	F1035-06012 F2515-06000	F1805-06040	F1035-06040 F2515-06000	F1805-08020	F1035-08020 F2515-08000
F1805-06014	F1035-06014 F2515-06000	F1805-06045	F1035-06045 F2515-06000	F1805-08022	F1035-08022 F2515-08000
F1805-06016	F1035-06016 F2515-06000	F1805-06055	F1035-06055 F2515-06000	F1805-08025	F1035-08025 F2515-08000
F1805-06018	F1035-06018 F2515-06000	F1805-06060	F1035-06060 F2515-06000	F1805-08030	F1035-08030 F2515-08000
F1805-06020	F1035-06020 F2515-06000	F1805-08012	F1035-08012 F2515-08000	F1805-08035	F1035-08035 F2515-08000
F1805-06025	F1035-06025 F2515-06000	F1805-08014	F1035-08014 F2515-08000	F1805-08040	F1035-08040 F2515-08000
F1805-06030	F1035-06030 F2515-06000	F1805-08016	F1035-08016 F2515-08000	F1805-08045	F1035-08045 F2515-08000

TABLE OF BOLT ,W/WASHER

BOLT ,W/WASHER	BOLT/WASHER	BOLT ,W/WASHER	BOLT/WASHER	BOLT ,W/WASHER	BOLT/WASHER
F1805-08050	F1035-08050 F2515-08000	F1805-10018	F1035-10018 F2515-10000	F1805-10050	F1035-10050 F2515-10000
F1805-08055	F1035-08055 F2515-08000	F1805-10020	F1035-10020 F2515-10000	F1805-10055	F1035-10055 F2515-10000
F1805-08060	F1035-08060 F2515-08000	F1805-10022	F1035-10022 F2515-10000	F1805-10060	F1035-10060 F2515-10000
F1805-08065	F1035-08065 F2515-08000	F1805-10025	F1035-10025 F2515-10000	F1805-10065	F1035-10065 F2515-10000
F1805-08070	F1035-08070 F2515-08000	F1805-10030	F1035-10030 F2515-10000	F1805-10070	F1035-10070 F2515-10000
F1805-08075	F1035-08075 F2515-08000	F1805-10035	F1035-10035 F2515-10000	F1805-10085	F1035-10085 F2515-10000
F1805-10014	F1035-10014 F2515-10000	F1805-10040	F1035-10040 F2515-10000	F1805-12016	F1035-12016 F2515-12000
F1805-10016	F1035-10016 F2515-10000	F1805-10045	F1035-10045 F2515-10000	F1805-12020	F1035-12020 F2515-12000

TABLE OF BOLT ,W/WASHER

BOLT ,W/WASHER	BOLT/WASHER	BOLT ,W/WASHER	BOLT/WASHER	BOLT ,W/WASHER	BOLT/WASHER
F1805-12025	F1035-12025 F2515-12000	F1805-12065	F1035-12065 F2515-12000	F1825-06010	F1035-06010 F2515-06000 F2500-06000
F1805-12030	F1035-12030 F2515-12000	F1805-12085	F1035-12085 F2515-12000	F1825-06012	F1035-06012 F2515-06000 F2500-06000
F1805-12035	F1035-12035 F2515-12000	F1805-14035	F1035-14035 F2515-14000	F1825-06014	F1035-06014 F2515-06000 F2500-06000
F1805-12040	F1035-12040 F2515-12000	F1805-14045	F1035-14045 F2515-14000	F1825-06016	F1035-06016 F2515-06000 F2500-06000
F1805-12045	F1035-12045 F2515-12000			F1825-06020	F1035-06020 F2515-06000 F2500-06000
F1805-12050	F1035-12050 F2515-12000			F1825-06025	F1035-06025 F2515-06000 F2500-06000
F1805-12055	F1035-12055 F2515-12000				
F1805-12060	F1035-12060 F2515-12000				

TABLE OF BOLT ,W/WASHER

BOLT ,W/WASHER	BOLT/WASHER	BOLT ,W/WASHER	BOLT/WASHER	BOLT ,W/WASHER	BOLT/WASHER
F1825-06030	F1035-06030 F2515-06000 F2500-06000	F1825-08025	F1035-08025 F2515-08000 F2500-08000	F1825-08050	F1035-08050 F2515-08000 F2500-08000
F1825-06035	F1035-06035 F2515-06000 F2500-06000	F1825-08030	F1035-08030 F2515-08000 F2500-08000	F1825-08055	F1035-08055 F2515-08000 F2500-08000
F1825-06055	F1035-06055 F2515-06000 F2500-06000	F1825-08035	F1035-08035 F2515-08000 F2500-08000	F1825-08085	F1035-08085 F2515-08000 F2500-08000
F1825-08012	F1035-08012 F2515-08000 F2500-08000	F1825-08038	F1035-08038 F2515-08000 F2500-08000	F1825-10014	F1035-10014 F2515-10000 F2500-10000
F1825-08016	F1035-08016 F2515-08000 F2500-08000	F1825-08040	F1035-08040 F2515-08000 F2500-08000	F1825-10016	F1035-10016 F2515-10000 F2500-10000
F1825-08020	F1035-08020 F2515-08000 F2500-08000	F1825-08045	F1035-08045 F2515-08000 F2500-08000	F1825-10020	F1035-10020 F2515-10000 F2500-10000

TABLE OF BOLT ,W/WASHER

BOLT ,W/WASHER	BOLT/WASHER	BOLT ,W/WASHER	BOLT/WASHER	BOLT ,W/WASHER	BOLT/WASHER
F1825-10025	F1035-10025 F2515-10000 F2500-10000	F1825-12025	F1035-12025 F2515-12000 F2500-12000	F2005-10016	F1155-10016 F2515-10000
F1825-10030	F1035-10030 F2515-10000 F2500-10000	F1825-12030	F1035-12030 F2515-12000 F2500-12000	F2005-10020	F1155-10020 F2515-10000
F1825-10035	F1035-10035 F2515-10000 F2500-10000	F1825-12040	F1035-12040 F2515-12000 F2500-12000	F2005-10025	F1155-10025 F2515-10000
F1825-10040	F1035-10040 F2515-10000 F2500-10000			F2005-10030	F1155-10030 F2515-10000
F1825-10080	F1035-10080 F2515-10000 F2500-10000			F2005-10035	F1155-10035 F2515-10000
F1825-12020	F1035-12020 F2515-12000 F2500-12000			F2005-10040	F1155-10040 F2515-10000
				F2005-10045	F1155-10045 F2515-10000
				F2005-10050	F1155-10050 F2515-10000

TABLE OF BOLT ,W/WASHER

BOLT ,W/WASHER	BOLT/WASHER	BOLT ,W/WASHER	BOLT/WASHER	BOLT ,W/WASHER	BOLT/WASHER
F2005-10055	F1155-10055 F2515-10000	F2005-12040	F1155-12040 F2515-12000	F2015-10020	F1155-10020 F2515-10000 F2500-10000
F2005-10060	F1155-10060 F2515-10000	F2005-12045	F1155-12045 F2515-12000	F2015-10025	F1155-10025 F2515-10000 F2500-10000
F2005-10065	F1155-10065 F2515-10000	F2005-12050	F1155-12050 F2515-12000	F2015-10030	F1155-10030 F2515-10000 F2500-10000
F2005-10070	F1155-10070 F2515-10000	F2005-12055	F1155-12055 F2515-12000	F2015-10035	F1155-10035 F2515-10000 F2500-10000
F2005-12020	F1155-12020 F2515-12000	F2005-12065	F1155-12065 F2515-12000	F2015-10040	F1155-10040 F2515-10000 F2500-10000
F2005-12025	F1155-12025 F2515-12000			F2015-10050	F1155-10050 F2515-10000 F2500-10000
F2005-12030	F1155-12030 F2515-12000				
F2005-12035	F1155-12035 F2515-12000				

TABLE OF BOLT ,W/WASHER

BOLT ,W/WASHER	BOLT/WASHER	BOLT ,W/WASHER	BOLT/WASHER	BOLT ,W/WASHER	BOLT/WASHER
F2015-10055	F1155-10055 F2515-10000 F2500-10000				
F2015-10060	F1155-10060 F2515-10000 F2500-10000				
F2015-12025	F1155-12025 F2515-12000 F2500-12000				
F2015-12030	F1155-12030 F2515-12000 F2500-12000				

