

September 2019 Newsletter

Current 2019 Manawa Chamber Members

AFTERSHOCK SMOKERS
ALLIANT ENERGY
BEAR LAKE CAMPGROUND & RESORT
BOWEN PROPERTIES
BRIDGE STREET SALON
BUTCH'S PIGGLY WIGGLY
CAP SERVICES INC-
WOLF RIVER SENIOR VILLAGE
CARBON FRECKLE
CEDAR SPRINGS GOLF COURSE
CITY OF MANAWA
CLINE HANSON DAHLKE
COLDWELL BANKER
CROSSCUT SOLUTIONS
GREENHOUSE
CRUISIN' IN DINER
DJ'S FRESH MARKET
EASTLING INSURANCE
FAYE WILSON REALTY
FIRST STATE BANK
GUNNER'S GREAT GARAGE
HEIMBRUCH SEPTIC SERVICES
HELLO BEAUTIFUL
KEGLERS BOWLING CENTER
KEVIN PETERSON
KOBUSSEN BUSES LTD
KOLBE WINDOWS & DOORS
LINDSAY HOUSE B&B
LITTLE WOLF DINER & PIZZERIA
LORGE PLUMBING
MANAWA COMMUNITY LIVING CENTER



SAVE THE DATES:

Manawa's Fall Fest –

October 5th, 2019

Cooking with Amy Hanten –

November 2nd, 2019

Lights of Love –

December 13th, 2019

MANAWA'S FALL FESTIVAL

OCTOBER 5TH, 2019 | 9AM – 2PM
DOWNTOWN MANAWA ON 2ND STREET AND IN SELECT BUSINESSES

- FACE PAINTING • STROLLING UP CLOSE MAGIC WITH JIM LENZ
- STEVE KELLER'S TRAVELING SNAKE SHOW • 40+ VENDORS
- GIANT YARD GAMES • PUMPKIN BOWLING
- BEAN BAG TOURNAMENT

Hosted By TK Bar & Grill and Take Charge Nutrition

- LIVE MUSIC WITH DENNY & DAWN
- all your favorite time polkas, waltzes and variety.
- AND MORE!!

Check out our Event Facebook Page "Manawa's Fall Festival" for more details!!
www.manawachamber.org



**THRIVENT
FINANCIAL®**



**TAKE
CHARGE
NUTRITION**
**SMART MOVE
REALTY**

SM
Sturm Memorial Library

**FirstState
Bank**

sturmfoods®
A Natural Food Company

**PREMIER
COMMUNITY BANK**



**Lorge
PLUMBING**



**hello
BEAUTIFUL**

**DJ's
MARKET**

**KEGLERS
BOWLING CENTER**
SPORTS BAR & GRILL
MANAWA, WI

Current 2019 Manawa Chamber Members

MANAWA DENTAL CLINIC
MANAWA MASONIC CENTER
MANAWA UNITED
METHODIST CHURCH
MID-STATE TREE SERVICE
MID-WESTERN RODEO
NCW EXTERIORS
OLD COUNTRY STORE ANTIQUES
PATRI INSURANCE
PREMIER COMMUNITY BANK
REMINGTON'S QUALITY
FOODS
S & S EXCAVATING AND
SEPTIC
SCHOOL DISTRICT OF
MANAWA
SELL CHIROPRACTIC
SMART MOVE REALTY
SMITH'S STEAK HOUSE
SOLARUS
ST. PAUL'S LUTHERAN
CHURCH/SCHOOL
STURM MEMORIAL LIBRARY
TAKE CHARGE NUTRITION
THE BUSY BEAN
THE FLOWER POT
THE STORE
THEDACARE PHYSICIANS –
MANAWA
TK'S BAR & GRILL
TOTAL HARMONY MASSAGE
WAUPACA COUNTY POST
WDUX AM/800 FM/92.7
WINEMAKER'S DAUGHTER
WOLF RIVER VET CLINIC

Honorary Members:

**Kenneth Groholski
Weylin Walker
Tom Squires**



**LUNCHEON WITH
AMY
HANTEN**

COMING TO MANAWA

Saturday, Nov. 2nd
- Doors Open at 11am

at the
MASONIC CENTER
520 N Bridge Street, Manawa

TICKETS REQUIRED
...
\$25 per person in advance
\$30 per person at the door
(ticket price includes dinner)

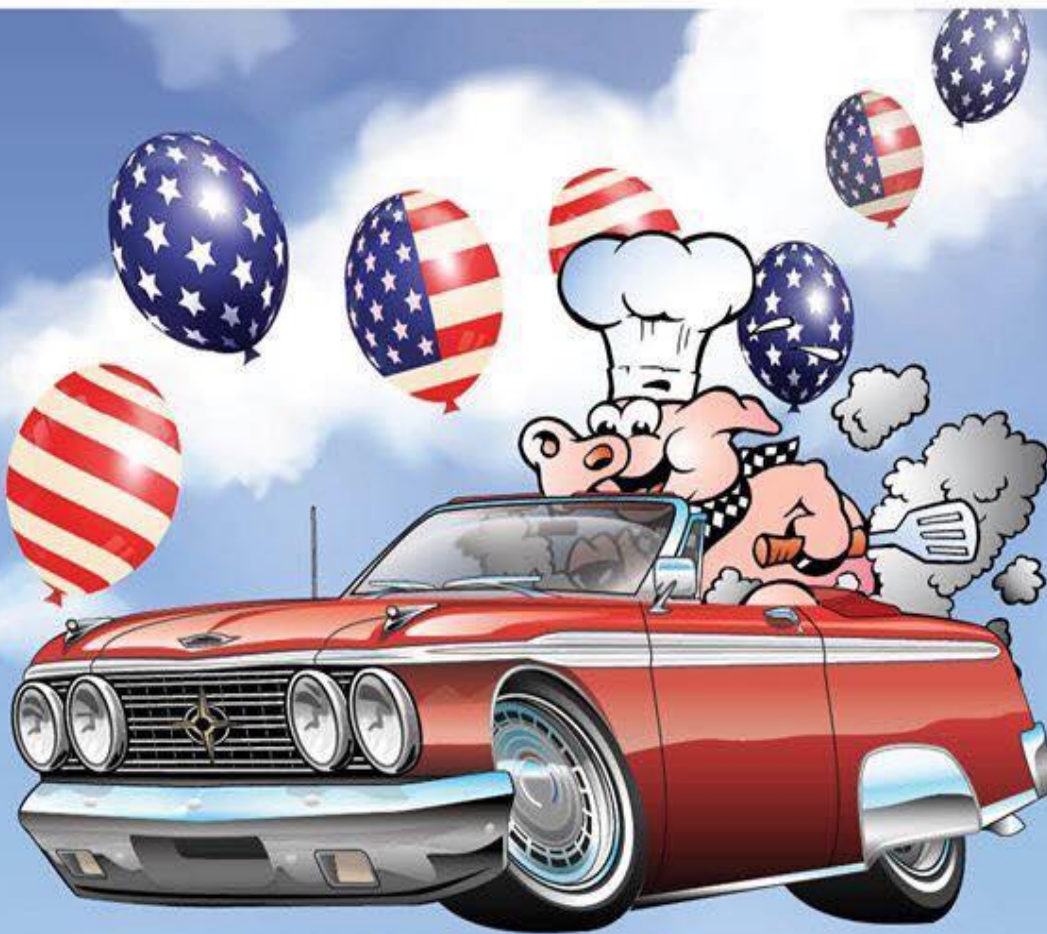
Tickets available online at brownpapertickets.com
- Online ticket deadline is October 30th
Tickets available locally at Eastling Insurance,
Premier Community Bank and Sturm Memorial Library

11am | Vendor
booths
open for
shopping

12pm | Cooking show
and dinner

MAKE IT MANAWA!
Manawa Area
Chamber of Commerce

www.manawachamber.org



2ND ANNUAL
FREEDOM PARK
PIG ROAST AND CAR SHOW
SAT, SEPT. 21, 2019

CAR SHOW

Registration 9:00 am - Noon
 \$5 to register.

Judging ends at 1pm,
 Trophy Awards at 2pm.

Contact: 715-281-6925

PIG ROAST

Starts at **10:00 am**
 Pig Roast with all the fixin's
\$10⁰⁰

**CRAFT/DIRECT
 SALE VENDOR
 SHOW**

For info contact:
melissa.habeck@outlook.com

All proceeds benefit the
Manawa Area Veterans Freedom Park



ART TOUR, MANAWA 9 am - 4pm

Manawa Area Veterans Freedom Park
 176 Beach Street, Manawa



JAN KRAETSCH

Owner/Broker

Cell: 715-581-1965

Home: 715-677-4288

jankraetsch@gmail.com

www.JanCares.com

SMART MOVE
Realty, LLC.

**Manawa
FFA Alumni**
proudly presents

**OCTOBER 19
2019** 12:00PM to 12:00AM

Pre Bash Party ★ No Cover

Friday with Sloppy Joe - 8 pm

Five bands starting at 12:00!

- ★ **R Country Offspring**
- ★ **Genesee Ridge**
- ★ **Noah John and Ringing Iron**
- ★ **Soggy Prairie**
- ★ **Dig Deep**

PADDLE RAFFLES ★ 50/50 RAFFLES ★ DOOR PRIZES ★ SILENT AUCTION

**Bands subject to change.*

Phone or text
Randy @ 920-538-2072

ADMISSION
★ \$20⁰⁰ ★

Camping Bundle Available
- Call 920-596-3308

www.littlecreekmusicfest.com go to the Bluegrass Bash Page

Sell Family Chiropractors
HORTONVILLE | MANAWA



**BACK
IN
SHAPE**

DID YOU KNOW:

Did you know
Carbon Freckle is
your local source for
logo design,
business cards,
posters, brochures,
yard signs and
more!



DID YOU KNOW:

Take Charge Nutrition
has healthy frappes?!
Caramel, Mocha, Salted
Caramel & Strawberries
and cream!

**TAKE
CHARGE
NUTRITION**



Log on to www.infosoup.org and click on the "Research and Learning" tab to find a wide variety of free online databases that include study guides, practice tests from the DMV, genealogy and more.



Upcoming Sturn Memorial Library Events

Sturn Memorial Library Presents...

Preschool Palooza!

Come to one session or come to all!
No registration required

Every Other Wednesday 10:30-11:00 a.m.
followed by free play time at the Library
Sept. 4 & 18 Oct. 2, 16, & 30
Nov. 13 & 27 Dec. 11

Best suited for ages 5 and under
for more information call the library at 920.596.2252
or visit www.manawallibrary.org

Stories Play Rhymes Songs Crafts

SML
Sturn Memorial Library
130 N. Bridge Street, Manawa WI

SML
Sturn Memorial Library

Lego Lab

Join us for creativity and imagination in action.
Work individually or in teams to create this month's challenge.
The theme will be revealed at the program.
Please do not bring your own legos.

Tuesday Sept. 24th, 2019
3:15 pm
Library Meeting Room
Ages 7-12

Call the library for details at (920)596-2252

HEALTHY BEGINNINGS PRESENTS...

Parents Interacting with Infants (PIWI)

PIWI IS DESIGNED FOR PARENTS & KIDS AGES 0 TO 2 YEARS OLD TO INTERACT TOGETHER WITH FUN ACTIVITIES, SONGS & BOOKS.

Parents will also get information about their child's development, temperament & interests.

Location: Sturn Memorial Library
130 North Bridge Street
Manawa, WI 54949

Time/Dates: 10 - 11:30 am
Every Tuesday from
October 1st to November 5th

snacks will be provided!

Questions? Contact:
Gretchen Konopacky
(715) 258-6405
gretchen.konopacky@co.waupaca.wi.us

brought to you by:
 Sturn Memorial Library

Anime

Club @ the Library

Who: Grades 7-12
Where: Sturn Memorial Library
When: Monday September 9, 2019 @ 3:30

View * Snack * Discuss!

SML
Sturn Memorial Library
130 N. Bridge St
Manawa, WI
920-596-2252
manawallibrary.org

TV14 & PG13
Grades 7-12
Recommended for Teens



Gas, Food & More!

September 2019 Food Specials



**Brownies &
Crispy Treats**
\$1.39 ea.



Cookies
\$1.19 ea.

**Mushroom &
Swiss Burger**



\$2.99

**Breakfast Pita
Supreme**
2/\$5

**Bacon, Ham or Sausage
with Egg, Cheese &
Hashbrown**

Available 5am - 10am

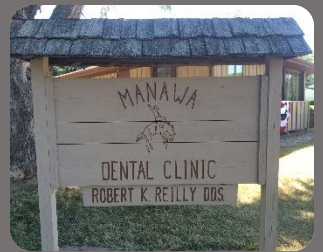


**"The Bomb Burrito"
& Any Size Fountain
Soda**



\$2.99

**Any
Size**



Gas, Food & More!



COMMUNITY BANK
PREMIER



CAMPGROUND & RESORT



MANAWA, WI



MARK VANDEN HEUVEL
REALTOR/CONSULTANT

(920) 596-2200 BUS.
(920) 572-5959 CELL



THE REAL ESTATE
GROUP, INC.

239 S. Bridge Street / P.O. Box 293
Manawa, WI 54949
www.ColdwellHomes.com



Robert D. Sell, D.C.
Chiropractor



SELL CHIROPRACTIC

P.O. BOX 100
HORTONVILLE, WI 54944
FAX (920) 779-0444

HORTONVILLE
216 W. Main Street
(920) 779-4554

MANAWA
312 S. Bridge Street
(920) 596-2592



THE BUSY BEAN

Take your coffee beans home! Buy a bag for a gift!
Get your coffee beans by us and you are getting high quality and fresh coffee beans!

Seem expensive at \$11.50 - \$13 a 12oz bag? Remember these beans are coming from handpicked coffee farms and families in Central and South America, Africa and other regions. The difference is evident with each cup of coffee and remember you get what you pay for!

Little Wolf Diner & Pizzeria



Open Sunday through Thursday
5am to 1pm and Thursday
through Saturday 5am to 9pm!

Need to Contact the Manawa Chamber of Commerce?

Email – manawachamberofcommerce@gmail.com

Call - (920) 596 – 2495 (Leave a Message)

Mailing Address - P.O Box 221 Manawa, WI 54949



NEW MANAWA OFFICE HOURS

To better serve our customers our new office hours are:

Monday - Friday

8:00 am to 4:30 pm

Closed daily 12:00 to 12:30 pm

24-Hour Technical Support

855-955-9102

Winemaker's Daughter

MAKING THE WORLD A LITTLE
HAPPIER ONE GLASS OF WINE
AT A TIME

Winemaker's Daughter

MANAWA, WI



Winemaker's Daughter

Open Dates

OR BY APPOINTMENT

September:

6th 4-9pm
7th 12-9pm
21st 10a-3p -Art Tour

October:

4th 4-9pm
5th 9a-9pm -Fall Fest
& Grayling Pingel

November:

1st 4-9pm
2nd 12-9pm -Mike Magee
22nd 4-9pm -Doe Camp
23rd 12-9pm -Doe Camp
30th 9a-5pm -Small Biz Sat

December:

6th 4-9pm
7th 12-9pm
14th 10-9p -Miracle On Bridge
21st 12-9pm -Christmas Carols

Winemaker's Daughter Presents

Sips & Giggles

Improv Comedy Show

COMEDY

**Saturday, October 12th
7:00pm**

Tickets: \$10 in advance - \$15 at the door

Purchase tickets at : winemakersdaughter.com



September 25th

Products
into
food!!!

September 5th from 1-6 pm



Start with a
Healthy and Delicious Breakfast!

American Breakfast

HERBALIFE NUTRITION Breakfast

559 kcal

VS

201 kcal*



*when mixed with 250ml non-fat milk
These products are not intended to
diagnose, treat, cure or prevent any disease.

TAKE CHARGE NUTRITION

Specials for September 2019

September 2-6

Monday: Closed for Labor Day

Tuesday: Orange Sunset

Wed.: Apple Cranberry Oatmeal Cookie

Thursday: Carrot Cake

Friday: Pina Colada

September 12-16

Monday: Take 6

Tuesday: Green Apple Jolly Rancher

Wednesday: Pumpkin Roll

Thursday: Choc. Covered Cherry

Friday: Tootsie Roll

September 19-23

Monday: Puppy Chow

Tuesday: Caramel Pumpkin Latte

Wednesday: Cherry Almond Crunch

Thursday: Berry n Cream Banana Apple

Friday: Chocolate Moose Tracks

September 26-30

Monday: Jitter Java

Tuesday: Rocky Road

Wed: Butter Cream

Thursday: Caramel Corn

Friday: Candy Apple

We are going to extend our hours on
Thursday September 5th to 6 pm for a
Special Event. Waffles will be available
along with other samples of healthy food
choices.



THEIRS VS OURS



•10g protein
•250 calories
•9g of fat
•26g of sugar

•15g protein
•100 calories
•2.5g of fat
•2g of sugar

Store Hours for September 2019

6:15 AM – 1 PM (Monday & Friday)

6:15 AM – 4 PM (Tuesday & Thursday)

5:00 AM – 1 PM (Wednesday)

Saturday's 8 AM – 12 PM

321 S. Bridge Street | Manawa | 920-472-3268 |



BEAR LAKE

HALLOWEEN

2019 WEEKEND

SEPT. 20-21

FRIDAY, SEPT. 20

CAMPGROUND PET COSTUME CONTEST

Dress your pet up in a costume for judging, which will take place 7:00pm, judging at the camp store. Then walk your pet through the campground for the Halloween pet parade. Perhaps some sites will even have treats for your dog. All dogs must be on a leash to be considered for judging.

8:00 PM

OUTDOOR ENTERTAINMENT

Weather permitting there will be out door entertainment at the mini golf course. Bring a chair.



BEAR LAKE

CAMPGROUND & RESORT
N4715 Hwy. 22/110, Manawa, WI 54949
920.596-3308
bearlakewi2016@gmail.com

SATURDAY, SEPT. 21

1:00 - 4:30 PM

AFTERNOON HALLOWEEN PARTY - SIZZLING SONNY'S ROCKIN' ROAD SHOW

Kids games throughout the afternoon. Bouncy house.

Bean Bags, Giant Beer Pong, Giant Ladder Toss set up in the field throughout the party ... No Tournaments, meet new people and challenge them to a game or two. Bring a cooler and some chairs and be ready to listen to some music.

2:00 - 7:00 PM

FOOD TRUCK

4:30 - 7:00 PM

TRICK OR TREAT-KIDS DRINK-OR-TREAT-ADULT

Walk around the campground, kids gather candy and parents get a drink. Be sure to dress up in your costumes, judges will be driving around giving out prizes.



7:30 PM

HAUNTED TRAIL RIDE

Line up at Camp Store

Decorate your site for prizes!

If you want ... bring candy for the kiddos and get creative w/fun shots for the adults.

www.bearlakecampground.com

Manawa School District Events

All Athletic Events are on the calendar of Events page on the district website!

www.manawaschools.org

Total Harmony



MASSAGE & BIOFEEDBACK

Manawa, Wisconsin
920.596.3276
920.878.0123 cell
tammy@totalharmony.biz

Tammy Arndt

R.M.T., O.M., C.B.T., R.T.

Member of AMTA, ABMP & NCBTMB
Loomis Digestive Health Specialist

Date _____ Time _____

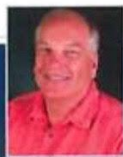
www.totalharmony.biz

Services Provided

- Swedish Massage
- Deep Tissue Massage
- N.M.T. Therapy
- Raindrop Therapy
- Cranial Sacral Therapy
- Stone Therapy
- Reflexology
- Ear Coning
- QXCI/SCIO Bio-Feedback
- Scenar Therapy

My Mission Statement

I am dedicated to assisting and teaching you how to integrate your being, that you may learn how the body operates as a whole on every level of Body, Mind and Spirit.



Jeffrey Handschke
Realtor
(920) 810-1363
jhandschke@coldwellhomes.com

COLDWELL BANKER

THE REAL ESTATE GROUP, INC.

1275 N. Shawano St.
New London, WI 54961
www.ColdwellHomes.com



MANAWA
HMC
HEATING & COOLING
920-596-3092
manawaheatingandcooling.com

24 Hour
Emergency Service
Heating, Ventilation
Air Conditioning
Commercial
Residential
Comfortmaker

Sales • Service • Satisfaction





CELEBRATING 100 YEARS!

★ ★ ★ 2019 EVENTS ★ ★ ★

☞ JULY

- 5&6 Rodeo Weekend
- 5 Sizzlin' Sonny
- 6 Sideshow
- 7 Dustin Lee - Deck 1-5pm
- 12&13 Iola Car Show
- Total Entertainment 8:30pm
- 13 Roaring 20's Party
- 14 Doozey 1-5pm
- 19 Nashville Pipeline
- 21 Time Machine 2-6pm
- 26&27 Symco Thresheree Weekend
- 27 Reckless Remedy

☞ AUGUST

- 2 Good Tyme Video D.J.
- 3 Leiniepalooza 2019
- 'Ask your Mother'
- 4 Quitters 1-5pm
- 9 Dustin Lee 8:30pm
- 10 Lakefront Luau - Beach Party
- with Sizzlin' Sonny
- 17 Manawa Booster Club Bags
- & Balls Tournaments
- 24 Private Wedding
- 30-31 Labor Day Weekend
- Good Tyme Video D.J.
- Totally 80's Party

☞ SEPTEMBER

- 1 Bear Lake Assoc. Annual
- Corn Roast & Craft Fair
- 7 Private Wedding
- 14 Firefest - Halloween #1
- 21 Private Wedding
- 28 Private Wedding

☞ OCTOBER

- 5 Private Wedding
- 12 Private Wedding
- 19 Bluegrass Bash 2019
- 26 Private Wedding

**100 YEAR
CELEBRATION**



920-596-3940

bearlakeresort@wolfnet.net

www.bearlakecampground.com

 **FAYE WILSON**
REALTY LLC.
P.O. Box 109
Waupaca WI 54981

CELL 920-841-2720
OFFICE 920-407-0003
FAX 715-942-2852
cindy.fwr@gmail.com
FayeWilsonRealty.com



Cindy Jaeckle
SALES ASSOCIATE
79366-94

 Assistant Vice President, NMLS ID# 637200
(920) 596-3300
mgriffin@bankfirststate.com

**HOME LOAN
HEADQUARTERS**

227 S. Bridge St.
P.O. Box 200
Manawa, WI 54949
Fax (920) 596-3380



Apply Online
FSBHomeLoanHQ.com

Crosscut Solutions greenhouse

2019 Summer/Fall Greenhouse Event Schedule

Open Monday - Saturday

July 27 @ 9:00 a.m. - Noon

Folk in The Flowers

Join us under the shade of the pergola for a morning of music with Folk Artist Jeanne Bauer. She is a favorite community entertainer, so you won't want to miss it!

August 10 @ 10 a.m.

Words With Wine Craft!

If you can write, you can do this! All supplies necessary to make a keepsake fresh flower vase for only \$7.00! Food and beverages available for sale. Visit our farm market vendors. RSVP due August 3, text 920-295-9383 or call 920-596-2330.

September 14, @ 10:00 am

Wine & Weave

Weave your very own wine bottle basket, no experience necessary! Cost is \$30. Food and beverages available for sale. Visit our farm market vendors. RSVP due Sept 9th. text to 920-295-9383 or call 920-596-2330.

Every Saturday Morning

@ 9:00 a.m. - Noon

Farm Market

Local vendors are selling bakery, seasonal produce, crafts, etc. The bar is open featuring our Famous Loaded Bloody Mary's along with a variety of different drinks every Saturday.

E5763 County Rd. B, Manawa

Located west of the Rodeo Grounds on County B

920-596-2330



Cedar Springs now has 30 camp sites! We are now also known as Cedar Springs Resort. We are right in nature's backyard with this diamond in the ROUGH! Check out the huge undisturbed swamp that is in our backyard. It is jam packed full of Wisconsin's nature.

Call or stop in to book your site.

(920) 596-2905



GREG & TIM SCHUELKE
 E7005 Cedar Springs Rd, Manawa, WI 54949
 (920) 596-2905 | cedarspringsgc@hotmail.com

Cedar Springs Golf Course & Resort is a brand new campground nestled in the heart of Waupaca County bordering a scenic 9-hole golf course.

We have 30 daily and seasonal sites available for your pleasure. They are large sites averaging 60'x60' allowing you to spread out.

Campers must be independent camping units. We are catering to people who like to golf and like to camp on a quiet setting. We are located in a scenic valley that will give you a feeling of being in the middle of nowhere.

	Rates	w/Unlimited Golf & Cart for 2 People
Daily*:	\$35/night + tax*	\$65/day
Weekly*:	\$200/week + tax	\$350
Monthly:	\$625/month + tax	\$900
Seasonal:	\$1600/season + tax	Single \$2200 Couple \$2500

*Includes water & electric for daily and weekly

cedarspringsgolfcourse.com

S

E

P

T

E

M

B

E

R



Manawa High School Sports 2019 - 2020

Football, Basketball, Baseball & Softball
Sponsors will be included in all broadcasted Manawa games
and included in post-season games at the same price per game!

Package Options

- A. 2 commercials per game plus 1 commercial during the day on game days**
\$44.25 per game
- B. 2 commercials per game plus 2 commercials during the day on game days**
\$55.00 per game

Additional Sponsorship Opportunities

Add to your sports package!
Sponsor the Half-Time Show, Pre-Game Show, or Post-Game Show for \$20 per game
Sponsorship includes one live 20 word mention. Limited space available!

Sponsor	Package	Additions
Signed	Date	

No cancellations.
Payments are due net 30 days.
Rates are for 30-second ads. For sixty-second ads, add \$3.00/ad.

*AS A SPONSOR OF HIGH SCHOOL SPORTS ON WDUX, YOU HAVE THE OPPORTUNITY TO MAKE YOUR PRESENCE
KNOWN TO LISTENERS AND YOU CAN FEEL GOOD ABOUT SUPPORTING A GREAT CAUSE!*

All Sponsors Receive:
~Commercials in Each Game
~Commercials during LIVE Streaming of the Games
~Sponsor Mentions on Promos Leading up to the Games
~Open and Close Credits for All Broadcasts

Most games are on FM 92.7

This station does not discriminate in the sale of advertising time, and will not accept advertising which is placed with intent to discriminate on the basis of race, gender or ethnicity. Advertiser hereby certifies that it is not buying broadcast air time under this advertising sales contract for a discriminatory purpose, including but not limited to, decisions not to place advertising on particular stations on the basis of race, gender, national origin, or ancestry.

A \$1.25 per month (\$1.25 minimum) service charge will be assessed on accounts 20 days past due.

200 TOWER RD - PO BOX 247 - WAUPACA, WI 54981
(715) 258-5528 - FAX (715) 258-7711 - WDUXradio.com



2019-2020 Packers Football

Season packages include:
20 PACKER GAMES and
FREE mentions on promos all season!

A. \$126/week
3 ads/Packers Game
1 ad/Packers Playback
6 ads/Pre or Post-game
220 ads & 70 FREE
\$2520

B. \$105/week
3 ads/Packers Game
5 ads/Pre or Post-game
160 ads & 70 FREE
\$2100

C. \$85/week
2 ad/Packers Game
4 ads/Pre or Post-game
120 ads & 70 FREE
\$1700

D. \$50/week
1 ad/Packers Game
2 ads/Pre or Post-game
60 ads & 50 FREE
\$1000

E. \$30/week
1 ad/Pre or Post-game
20 ads & 50 FREE
\$600

Sponsors are automatically included in
Post-Season Games at the same rate/game!

Individual Games:

Packer Preview: \$28
Pre-game starting 2 hours before the game.

In Game: \$50
The GAME!

Packer Playback: \$35
15 minute show that plays right after the game.

Packers OT: \$28
Live 2 hour show after the game.

Season sponsors can purchase individual ads at 30% off!



PACKERS RADIO NETWORK

Sign up as a season sponsor to get:

**Package A, B, or C = 1 FREE pre or post-game
& 1 FREE ad in the NFL games!
FREE ads!**

**Package D & E = 1 FREE ad in the NFL games!
FREE ads!**

*Free pre or post-game ads during regular season only.

Thirty-second net rates.
Add \$3.00 each for sixty-second ads.

Package	Signed	Date
---------	--------	------

This station does not discriminate in the sale of advertising time, and will not accept advertising which is placed with intent to discriminate on the basis of race, gender or ethnicity. Advertiser hereby certifies that it is not buying broadcast air time under this advertising sales contract for a discriminatory purpose, including but not limited to, decisions not to place advertising on particular stations on the basis of race, gender, national origin, or ancestry.

A \$1.25 per month (\$1.25 minimum) service charge will be assessed on accounts 20 days past due. Cancellations are subject to start-up charge back.

200 TOWER RD - PO BOX 247 - WAUPACA, WI 54981
(715) 258-5528 - FAX (715) 258-7711 - WDUXradio.com

S

P

E

C

I

A

L

S

Bridge Street Salon

Are you going on vacation?

We do pedicures!!!

Call to book your appointment!

(920) 596-2887



TK Bar & Grill

We serve FOOD!

Delicious burgers start with fresh buns! Baked here daily!



Manawa Community
ART TOUR

Saturday
SEPTEMBER 21, 2019
10:00am - 4:00pm
DOWNTOWN MANAWA

**TOUR 19 LOCAL BUSINESSES AND MEET 38 WISCONSIN ARTISTS.
HEAR THE SOUNDS OF 6 MUSICIANS.**

PAINTING | METAL | WOOD | GLASS | FABRIC | DIGITAL | POTTERY | PHOTOGRAPHY & MORE
DEMONSTRATIONS | FOOD & MUSIC AT MANY LOCATIONS | SEE FACEBOOK FOR DETAILS
FREE PARK & RIDE SHUTTLE AVAILABLE

Join us for a day of fun!
WE THINK YOU'LL LIKE IT.

Sponsored by
@ManawaArtTour
MANAWA REVITALIZATION Committee

DRIVERS WANTED



KOBUSSEN BUSES LTD.

Family Pride in Every Ride

Contact Sherida @ 920-389-1500
Sherida.genereau@kobussen.com

Don't let the school bus scare you! We'll train you every step of the way!

Young kids at home? NO PROBLEM! Bring them with you!!

Routes starting at \$16/hr. Already have your CDL? Get paid for your experience!

APPLY TODAY!

Manawa Community Living Center

The Manawa Community Living Center is looking for photos of the facility from over the years. It could be photos of the outside or inside of the building. If anyone from the community has photos that they would like to share to please speak with Brittany at

920-596-2566.



Cedar Springs Golf Course

Come golf and enjoy our Friday Night Fish Fry!



Keglers Open Bowling Times



Tuesday- 11am to 10pm
Wed. - 11:00am to 10pm
Thursday- 11am to 5pm,
Every other week
5:30pm to 10pm
Friday- 11am to Close
Saturday- 4pm – Close
(Times subject to change,
Call for Confirmation)

Events and Specials

Need a Night Out....
Leagues are forming...

Looking for Men, Women,
Couples, and Youth.

All Ages Welcome!!

- *Monday Men's
- * Tuesday Men's Late
- * Wednesday Morning
Coffee Clutch
- *Wednesday Night High
School
- *Wednesday Night Majors
- *Thursdays Night Ladies
- *Friday Night Bumper
- *Saturday Morning Youth
- *Saturday Couples
- *Sunday Couples

Call 596 – 2855 for more
info and times!



Stop and checkout our changing Tap beer –

Badger Club Amber, Leinenkugel
Northwoods, Fox River Brewing Company
Red Bobber, Little Soldier American Amber
Ale, Ale Asylum Hopaliscious, & New Glarus
Spotted Cow!

THURSDAY NIGHTS – Economy Night

4:30pm to Close

Can Beer - \$1.50

\$1 off any Sandwich or Burger



**Stop down and grab one of our
limited appetizers!**

**Mac & Cheese Wedges,
Triangle Hash Browns, Pickle
Fries, Zucchini Fries, Baby
cakes, Southwest Corn
Nuggets, and Cauliflower
Bites!**

FULL MENU AVAILABLE
\$5.00 Lunches!!!!



Come on in and visit us!

Nightly Specials

Don't forget to check out our Nightly
Specials. 4:30pm – Close.

Tuesday- Loaded Nachos OR X-cuts

Wednesday – Traditional Wings

Thursday - \$1 off any Sandwich or Burger:
\$1.50 canned beer.

Friday- Fish Fry and \$2.50 Old Fashions
(All Day)

“Like” Us on Facebook!



Booking a Party...Whether it is a
Birthday, Anniversary, Work,
4-H, etc. Let Keglers be the
host. We have Birthday Party
Packages from Young to Old or can
work with your party needs.





Cedar Springs Golf Course

E7005 Cedar Springs Road, Manawa, WI 54949

50th Year Anniversary Special

UNLIMITED GOLF 2018-2021

There's No Catch, Just Great Golf!

UNLIMITED GOLF FOR ONLY

\$49

PER YEAR

With a \$10 per year admin fee

To purchase your membership today,
PLEASE CALL

920-596-2905

LIMITED SPOTS AVAILABLE!

** Valid Monday to Sunday. Membership based on three (3) years.*



IN PRINT CHOOSE YOUR FAVORITE

Waupaca County Post

1 year - \$49 • 2 years - \$79

Includes **free access** to the website, waupacanow.com. You register online by using the subscription number on your mailing label above your name.



When you hold your local newspaper in your hands - whether in print or on a mobile device - you have a powerful tool connecting you with the community around you.

Featuring a selection of Waupaca County stories gleaned from Waupaca County Post, New London Press Star and Clintonville Tribune-Gazette

Go to mmcsublications.com to access the content of the Waupaca County News website. Click to access a story and you will be prompted to register or subscribe.

Subscribe Today!

FOR WEEKLY
MAIL HOME
DELIVERY

Waupaca County Post

☐ 1 Year \$49 ☐ 2 Years \$79

To Subscribe: Call 715-258-3207

Mail: Subscription Department, PO Box 408, Waupaca, WI 54981
or drop off at 1990 Godfrey Drive, Waupaca

☐ New Subscription ☐ Renewal

Name: _____

Phone: _____

Email: _____

Address: _____

City: _____

State/Zip: _____

PAYMENT INFORMATION:

☐ Cash ☐ Check# ☐ Credit Card- ☐ Visa ☐ MC ☐ Discover

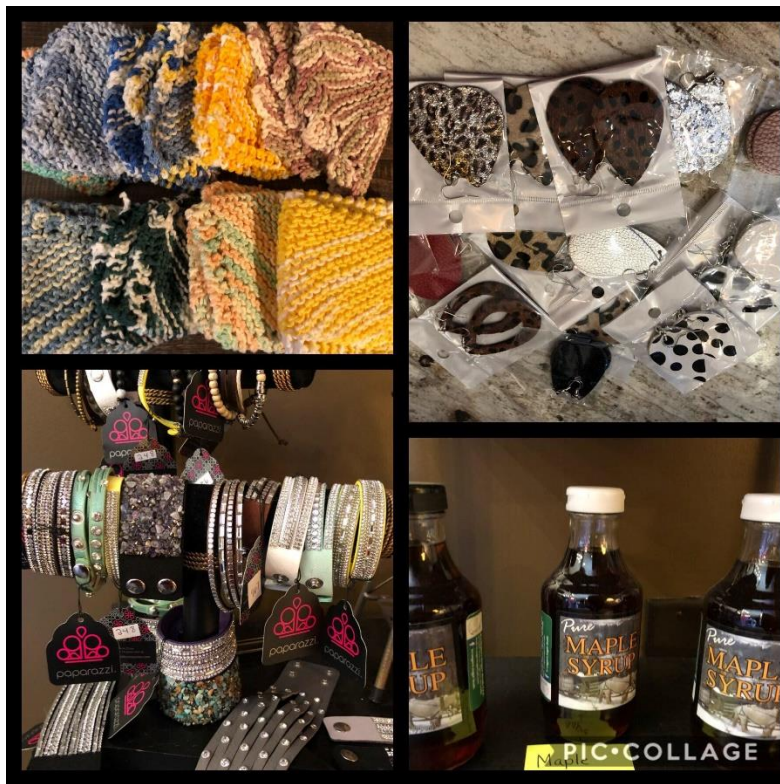
Credit card number: _____

Expiration Date: _____

Name on Card: _____

Signature: _____

JOURNALISM MATTERS - NOW MORE THAN EVER



Take Charge Nutrition supports local small businesses! Come on in and see what we have! Paparazzi, Local Maple Syrup, Color Street Nails, Earrings, Knit items, Etc.



Manawa Community Living Center
 Skilled Nursing Care & Assisted Living all under one roof!
 New skilled nursing addition is now open.
 Each private suite offers a wheel chair accessible tile shower.
 Accepting Private Pay, Medicare, Managed Care & Medicaid.
 Rooms now available
 Call to schedule a tour 920-596-2566
www.manawacommunitylivingcenter.com

Mid State Tree Service and ARBORIST
 Rob Ferg Owner
 E7468 Hwy. 54
 New London, WI 54961
 Phone: 920-596-1979
 Cell: 715-281-3512
 robferg@gmail.com
www.midstatetreeservicewi.com

Solarus
 keeping you connected





2019 Board Members:

President: Tim Trull

The Lindsay House B & B

**Vice President –
Robin Glocke**

Manawa Community Nursing
Center

Treasurer: Renee Berg

Premier Community Bank

Secretary: Ellen Connor

Sturm Memorial Library

Director: Kevin Mitchell

Tk's Bar & Grill
Little Wolf Diner & Pizzeria

Director: Jamie Lane

Winemaker's Daughter

Director: Karen Riemer

Take Charge Nutrition

Brooke Schuelke

Secretary &
Promotional Manager

MANAWA RURAL FIRE DEPARTMENT INVITES YOU TO FIREFEST

FIREFEST

SATURDAY, SEPTEMBER 14, 2019

IT'S HALLOWEEN AT BEAR LAKE!

**Fun for
adults
and kids!**

**BIKE RAFFLE
12 BIKES TO BE
GIVEN AWAY!**

**Come help
raise money
for the
local fire
department
for updating
equipment**

2:00 pm

**BEAN BAG
TOSS
TOURNEY**

- \$20 PER TEAM
- 50% PAYOUT

6:00 pm

**TRICK OR
TREATING**

9:00 pm

LIVE AUCTION
Bid on Manual Labor
by Firefighters

FUN

**50/50 RAFFLES
DROP BUCKETS**

...
**HOT DOGS,
HAMBURGERS, BRATS
& FRESH CHEESE
CURDS FOR SALE**

DUSK

**KIDS HAUNTED
HAYRIDE**

7-11 pm

**TOTAL
ENTERTAINMENT DJ**

2-6 pm

FUN FOR kids!
Pumpkin Painting
Kid's Games
Mini Golf
Costume Judging
Fire Truck Tour

**Conroy's
Bear
Lake
campground
& Resort**

www.bearlakecampground.com

N4715 State Road 22 & 110
Manawa, WI 54949
920.596.3308 campground
920.596.3940 bar

Dr. David J. Sell
Chiropractor



FAMILY CHIROPRACTORS • SELL CHIROPRACTIC

P.O. BOX 100
HORTONVILLE, WI 54944
FAX (920) 779-0444
HORTONVILLE
216 W. Main Street
(920) 779-4554

MANAWA
312 S. Bridge Street
(920) 596-2592

Summit
Accounting & Tax, LLC

208 E. Union Street/P.O. Box 6
Waupaca, WI 54981
715.258.4282 Fax: 715.258.6915

Jason Radtke, CPA
Owner

More Experienced ~ Better Prices

325 S. Bridge Street/P.O. Box 916
Manawa, WI 54949
920.596.5555 Fax: 920.596.1980

www.summitaccountingtax.com
Jason@Sumtaxes.com

Micro and Small Business Loans

We provide micro and small business loans for start-up and expansion expenses including equipment, inventory, and working capital; and free business assistance for the life of your loan with CAP.

Flexible Terms and Affordable Interest Rates



"The loan you have provided helped saved the business and has kept over 20 employees in their positions... There is great optimism now because of your help."

-Isaac Kou Lee, loan client



CAP Services' lending activities are made through CAP's lending arm, Community Assets for People, LLC (CAfP), a Community Development Financial Institution and wholly owned subsidiary of CAP Services, Inc.



U.S. Small Business Administration

Funded in part through a Cooperative Agreement with the U.S. Small Business Administration.



A member of the **OPPORTUNITYFINANCE NETWORK**



Corporate Headquarters
2900 Hoover Road, Suite A
Stevens Point, WI 54481

This institution is an equal opportunity provider.



Small Business Assistance

We help you plan, launch, fund, and grow your business!



CONTACT US TODAY!

In Portage and Marathon counties:

Jean Cook • 715-343-7138 • jcook@capmail.org

In Outagamie, Calumet and Waupaca counties:

Kitty Johnson • 920-209-1384 • kjohnson@capmail.org

In Wood, Waushara and Marquette counties:

Lisa Rader • 920-787-7461 • lrader@capmail.org



Business coaching & lending

capservices.org/smallbiz

Now Hiring in Manawa!



NOW HIRING - WORSHIP PIANIST for
Manawa United Methodist Church
Sundays 10:15am-11:45am plus special services.
Send letter of interest to 655 Depot St; Manawa, WI 54949

Share your talent & time with a small but mighty congregation who loves to sing praises to the Lord.

Exceptional baby grand electronic piano with full orchestra options.

Membership not required.

Frequent pot-lucks a bonus.

Manawa United Methodist Church

665 Depot Street

Sundays at
10:30am!

Join Us –
Everyone
Welcome!

Great Message &
Music!

Pastor Steve Rice
596-3463

St. Paul Lutheran Church

Sunday Services:
8:15am & 10:30am

(2nd and 4th Sunday Communion)

Monday Service:
6:30pm

(4th Monday Communion)

742 Depot Street,
Manawa WI
54949

920-596-2837

NOW HIRING

COOKS & WAITRESSES

Apply Within
310 South Bridge Street, Manawa



LOOKING FOR FRIDAY & SATURDAY HELP BARTENDING

4pm - 9pm

Must be available on these nights. More nights available if desired, but these nights are a must.
It may not be every Friday and Saturday, but you must be available these nights!

Must Apply in person at Smiths Manawa Steak House

****Persons sending applications via FB will not be considered****



Now Hiring



BARTENDERS & COOKS

APPLY WITHIN
313 S BRIDGE STREET, MANAWA

Mid State Tree Service



and ARBORIST

NOW HIRING
Call Rob at 920-596-1979.