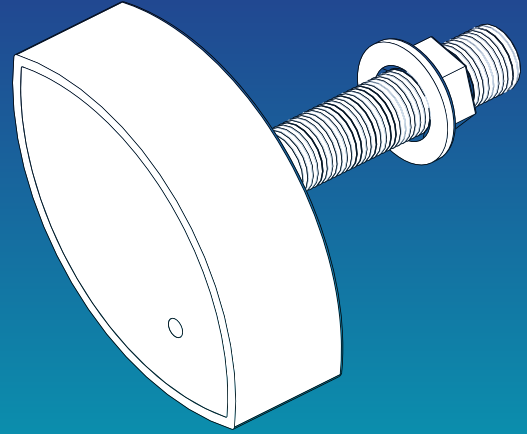


Dual Frequency CW Transducer

CB131D600

50 / 200 kHz 600 Watts



The cost-effective choice to get target detail in shallow water as well as good deep-water bottom tracking

The Echonautics CB131D600 is a stem thru hull dual frequency CW transducer with 600 W power rating, in bronze housing.



The fairing block offers **reliable and accurate sonar performance.**

High-speed performance will increase with high-performance fairing.

***Warning:** do not install bronze housing into metal hulls.

TRANSDUCER

- Dual Frequency CW

FREQUENCY

- 50 - 200 kHz

BEAMWIDTH

- 42° / 11°

POWER

- 600 W

MOUNT

- Thru hull, with fairing

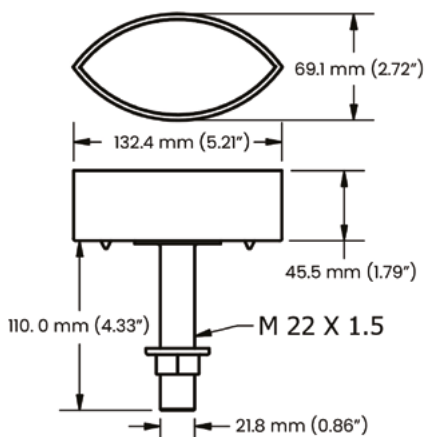
MATERIAL

- Bronze

Dual Frequency CW Transducer

CB131D600

TECHNICAL SPECIFICATIONS



Function	Depth and Temperature
Frequency	CW 50 / 200 kHz
Mount type	Thru Hull, with fairing. Note: fairing block is optional
Deadrise	Max deadrise 20° with fairing block
Material	Bronze
RMS Power	600 W
Beamwidth	50 kHz 42° @ -3db 200 kHz 11° @ -3db
Depth	Max @50 kHz = 353 m (1,200 ft) Max @200 kHz = 206 m (700 ft)
Temp. sensor	NTC
Acoustic window	Urethane
Weight	1400 g (49 oz)
Cable length	9 m (30 ft)
Hole diameter	22 mm (0.86")

L41D6C/EN10

Customization available on request.

Designed in USA, Made in ITALY

Echonautics is the result of a joint venture between an American company specialized in transducers design and an Italian manufacturer of marine electronics since 1985, born to offer a high-quality range of transducers ready to deliver to boat manufacturers worldwide.

SALES NORTH AMERICA

AvMap Satellite Navigation Inc. (TWS group)

25 Enterprise Zone Drive,
Riverhead, NY 11901, USA
+1 800 363 2627
orders@avmap.us

SALES EMEA, APAC

AvMap s.r.l. (TWS group)

Viale Zaccagna 6,
54033 Carrara (MS), ITALY
+ 39 0585 772305
orders@avmap.it