

Welcome to our new format email. We intend to send this out at the end of each month to update everyone about progress at Wirksworth or elsewhere.

In this email you will see quick news bites about each topic. In this issue we bring you up to date with work done in our regular Tuesday and Friday working parties as well as those less formal days.

We also explain progress with fundraising. To get involved in our working parties, use your skills to help design adverts, or join the fundraising effort, please get in touch with us by replying to this email.

Our members' paper magazine, ICON, will show greater detail about each topic. The next issue should be printed in August. If you are not a member, please do sign up via this web page: [www.lms10000.co.uk/membership](http://www.lms10000.co.uk/membership)



Work has continued through June and July to apply a coat of paint to the bogies as part of an ongoing preventative maintenance procedure. The brake system has been checked on one bogie following months of careful oiling to ensure all parts were free to move. The result was very positive.



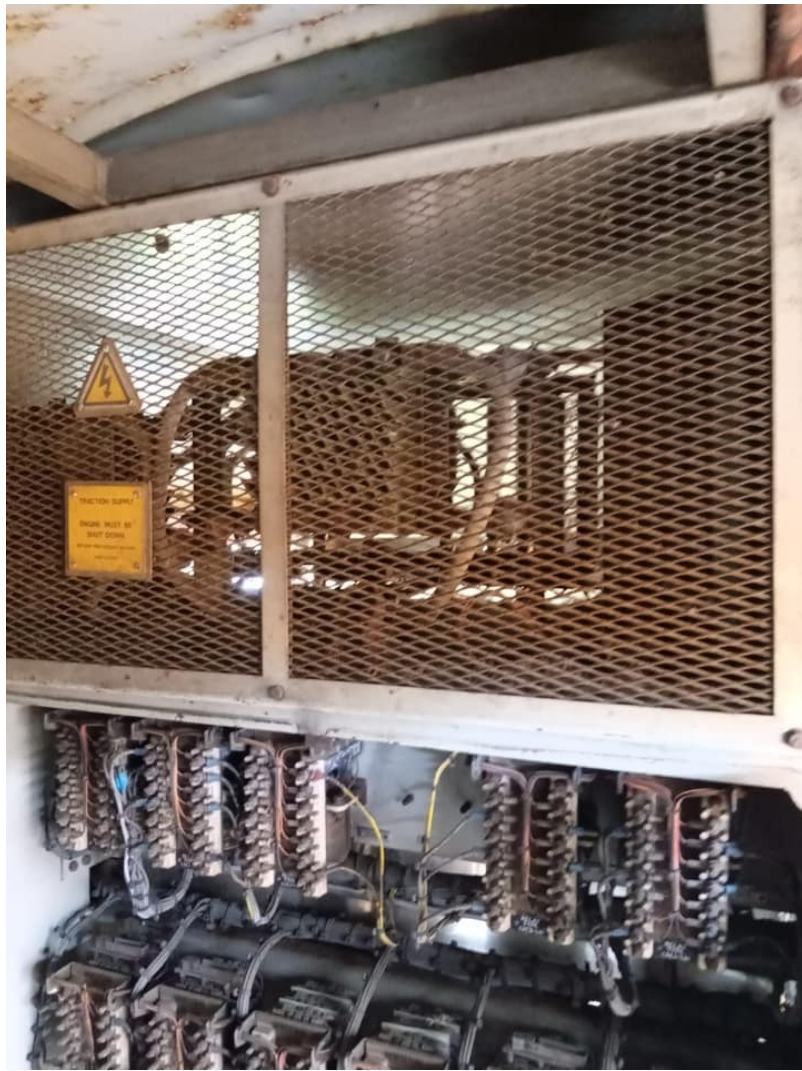
# 58022 News

At the beginning of July parts from the electrical cubicle were removed for storage pending refurbishment. A member has donated £10,000 for the refurbishment of the electrical cubicle. When

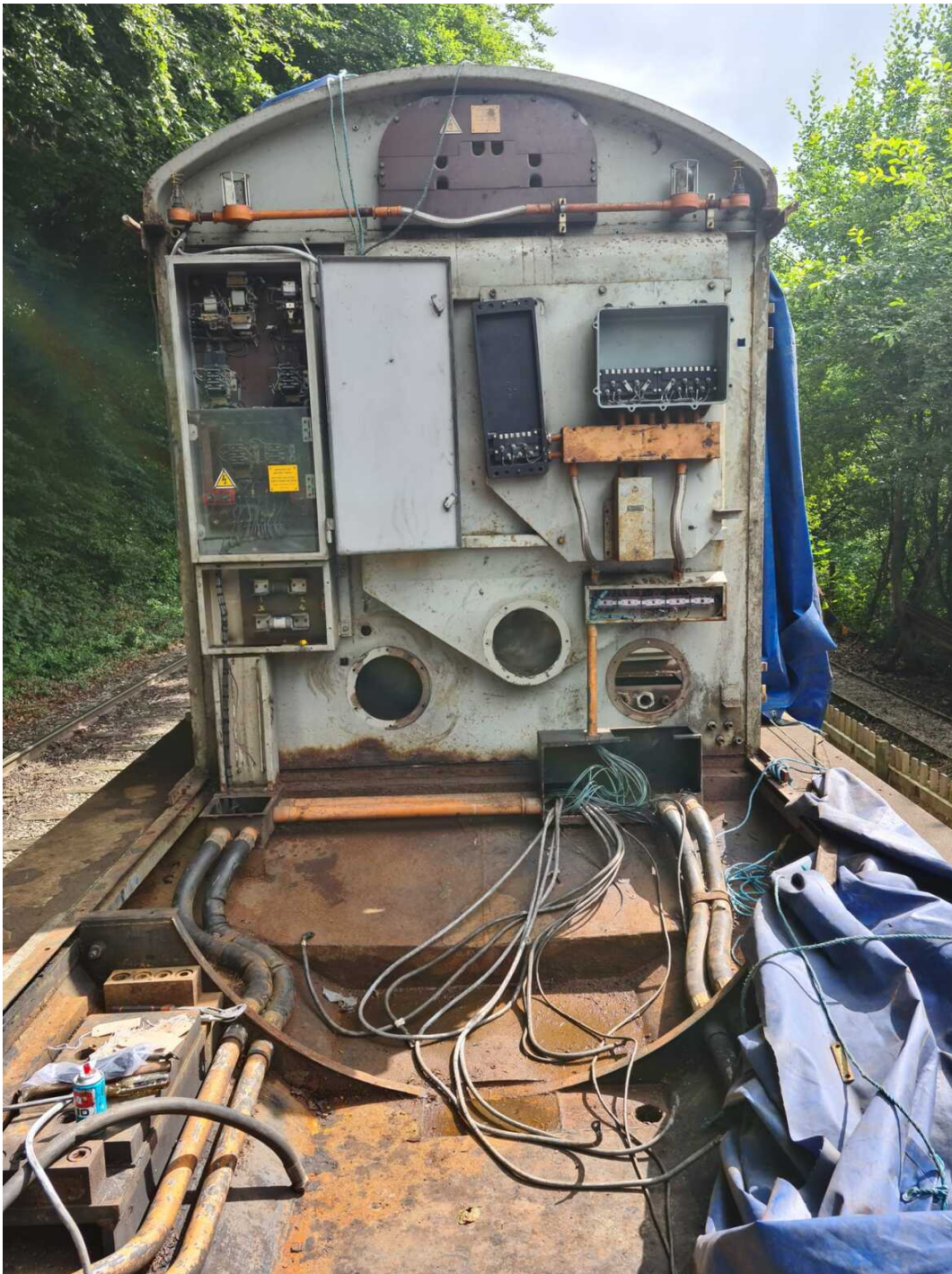
complete this will provide visitors with a good example of the standard of refurbishment that we are aiming for.

The main chassis was also cleaned over a number of weeks, resulting in three buckets of rust.









## Fundraising News

We have now closed the President's Centenary Appeal, which raised over £33,000 toward short notice movement of equipment. So far we have moved 58022, the bogies and Sturgeon waggon to Wirksworth. We await word from third parties to move the second power unit, alternators and traction motors, once they become available to us.

### THE NEW FUNDRAISING APPEAL

The new Gaining Traction appeal is focussed primarily on creating a rolling chassis for 10000. £60,000 is required to cover the design approval and practical implementation of this work. More details will be in the next copy of ICON.

Independent examination of engineering calculations is already in progress. This is a substantial sum for us to raise and we hope it is a challenge to be embraced by our members and all those

who want to see an example of class D16/1 running on the rails once more.

Potential donors are encouraged to arrange a personal visit to meet Trustees to discuss opportunities to be part of recreating 10000.

### **NEW VOLUNTEERS ARE WELCOME TO JOIN THE FUNDRAISING TEAM**

We would appreciate the input of additional people in our advert-design and fundraising team. If you have experience designing posters or would like the challenge, please get in touch. Fundraising is the key to a speedy construction phase. Without it, our task would be so much harder. So, again, if you have experience or would welcome a challenge, please get in touch.



We've let the railway use our wagon until we are ready to use it ourselves. On July 9th our Sturgeon wagon was placed alongside the EVR's own Sturgeon in the yard to receive a consignment of concrete sleepers. On the 16th they were seen being shunted through the station.

In due time we will lift the chassis of 58022 off its bogies, invert it and house it upon the Sturgeon wagon so that work can be carried out to adjust the chassis to fit the ex-EM2 bogies. The site at Warkworth yard is busy and congested and it is necessary that the chassis is mobile throughout the alteration work. Therefore using such a wagon is an ideal method of achieving this.

More details are in the next issue of ICON.



## Membership

The Society is a registered charity. Membership is usually by monthly donation. There is no set membership fee. Simply decide how much you can afford to pay each month; minimum £2 per month.

The benefits of membership increase the more you donate. Click [here](#) for details of the different levels of benefit available. Your membership benefits are commensurate with the total donations you have made. If you would rather donate once every 12 months in lieu of monthly payments please contact us so we understand this correctly.

There are a number of ways to make a donation: via the bank, a cheque or Paypal Giving Fund. [Click here](#) to access the website membership page.



## Benefits for donors

The following benefits are offered to donors. Donors of £24+ per year are automatically entitled to be members at no extra cost. The levels of benefits for donors "Notches" to reflect 10000's notched driver's controller, seen below. These benefits are available once construction of the locomotive is fully completed.

Notch 1 – £24 - £59 - All donors can become members and will receive copies of the Society newsletter, be able to do voluntary work toward 10000's re-creation, be invited to society events and have voting rights at meetings.

Notch 2 - £60 - £119 - will receive a discounted ticket price on one of 10000's first trains in addition to Notch 1 benefits.



Notch 3 - £120 - £239 - will be offered a free seat on one of 10000's first public trains in addition to Notch 1 and 2 benefits.

Notch 4 - £240 - £499 - will be offered a cab ride in 10000 along with Notch 1 - 3 benefits.

Notch 5 - £500 - £1499 - will be offered a free seat on 10000's first passenger train in addition to the benefits offered to Notch 1 - 4 members. Those people who were Life Members in the previous annual membership system are automatically entitled to Notch 5 benefits.

Notch 6 - £1500 - £9,999 - will be offered a driver experience package, including an opportunity to drive 10000 along with all Notch 1 - 5 benefits.

Notch 7 - £10,000 - £24,999 - Donors will be presented with a copy of Mark Langley's painting of the twins on Shap Fell. Donors in Notch 7 and 8 will also be privately invited to visit and observe all major activity, such as stock arrivals, movements by cranes, etc.

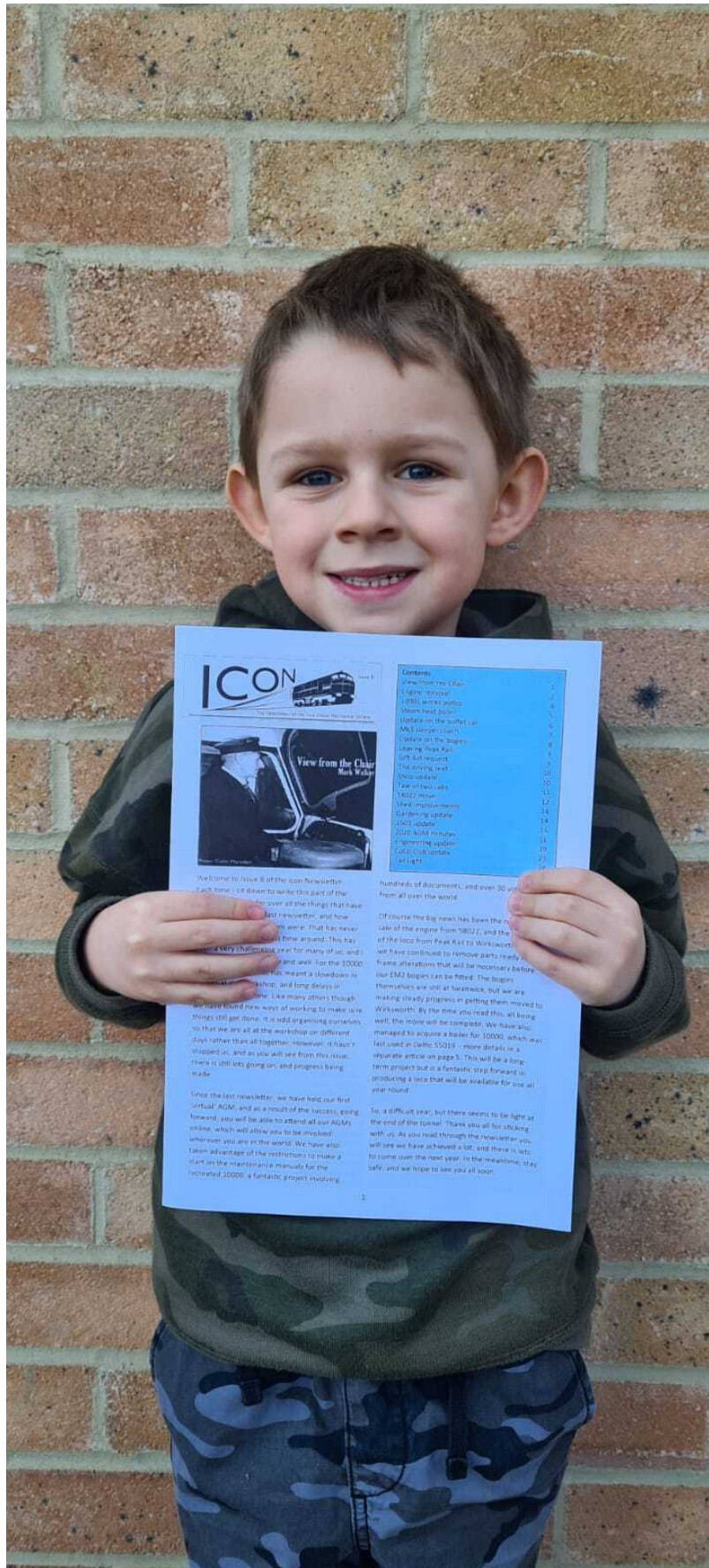
Notch 8 £25,000+ - TBA



Class 47 loco D1842 arrived at Warkworth on the 27th for the Diesel Gala on the 6th-8th. Our Centenary Works will be open to the public during that Gala.



Welcome to our youngest member Seth, 6 years old last month. He is the son of our new accountant who helps our Treasurer to compile our annual accounts and, by luck, is mad about railways. He donates some of his pocket money and gives £2 per month to be a member. He said "I hope I'm not the youngest for too long - I want more people to join"



Mind the paintjob! We dropped off items via truck at the skip on the 30th. Care was taken and no locos were hurt in the picture! The front of house is now looking tidier and organised ready for next weekend's Open Day.



©2021 Ivatt Diesel Recreation Society | 46 Biddick Village Centre, Washington, NE38 7NP

[Web Version](#)   [Forward](#)   [Unsubscribe](#)

Powered by  
**GoDaddy Email Marketing**®