



**NIRMAAN**

WORKS

SINCE 1993



# Content

About Us	03
Letter from the director's desk	05
Services	07
Projects & Clients	09
Project Highlights	11
Awards and Recognition	17
Health Safety & Environment Policy	19
Planning, & Construction Process	21
Equipments and tools	22
Clients	25
Project Gallery	26



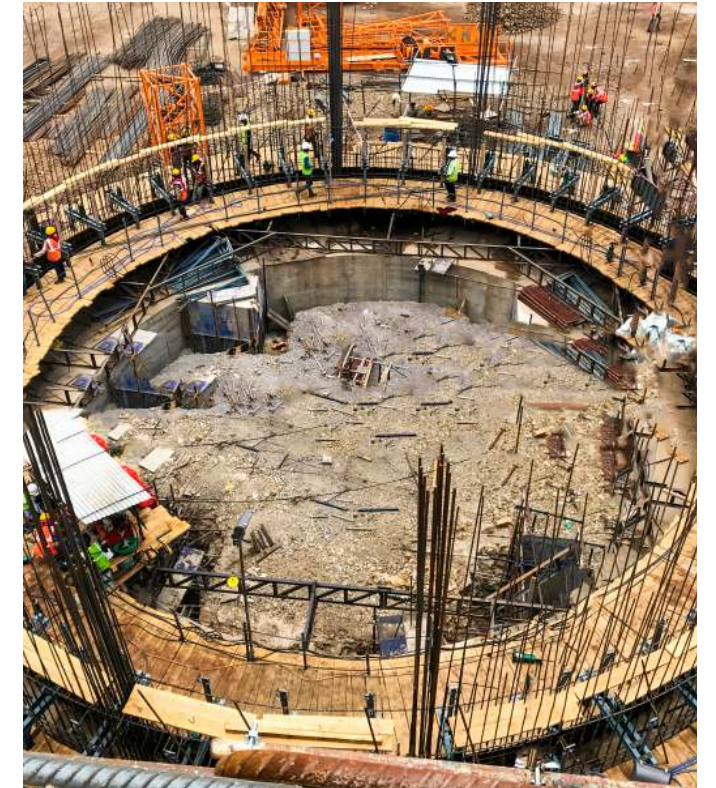
## About Us

The year was 1993, it was an era of change and opportunity in INDIA. The changes happening across the country ignited a vision in us- a vision to be a part of the nation's growth story. And driven by this desire, we started our journey in the industrial sector. Our mission then was clear: to construct structures that not only met but exceeded international standards. As we set out, we understood that we were not merely builders of physical structures; we were architects of progress, enablers of development, and catalysts for change.

At Nirmaan Works Pvt. Ltd, we believe that every brick laid, every design conceived, and every promise kept is a step towards enhancing lives. Our clients are not just our partners; they are the inspiration behind every project we undertake. Our ability to listen, innovate, and consistently deliver is why our brand has become synonymous with trust, innovation, and excellence.

Our extensive experience in industrial construction has equipped us to deal with challenges that come with complex projects involving heavy machinery, towering structures, and potential life-altering accidents. Understanding the high stakes involved in our operations, safety has always been our number one priority. It is to this day a non-negotiable factor.

Fast forward 30 glorious years, we have worked on residential, commercial and industrial projects that span across the nation. We are based in the vibrant city of Jaipur, where we have become an integral part of the urban landscape. Our story is one of seizing opportunities, embracing change, and crafting a legacy that will continue to shape our future.





# NIRMAAN WORKS

Greetings and welcome to Nirmaan Works pvt. Ltd.

It is with great pride that I present to you projects undertaken by Nirmaan Works Pvt. Ltd. Our journey started in 1993, and since then we have grown and evolved, taking on projects of varying complexity. And this portfolio aims to highlight some of the projects we have undertaken in the past three decades. Every project is a testament to our commitment to progress, development, and positive change.

At Nirmaan Works Pvt. Ltd., responsible business conduct is an integral part of our business. Our Health, Safety, and Environment policy is a testament to our commitment to safeguarding the well-being of our employees, partners, clients, and the environment. As we continue to redefine excellence in construction, we will continue to uphold these principles, ensuring that responsible business conduct remains at the core of our operations and decisions.

I would also like to take this opportunity to reflect on the legacy of our founder Late Kanhaiyalal Kumawat, without whom our company would not have come into existence. His visionary leadership was what propelled us to our current heights of success. Our legacy is built upon a solid foundation of excellence and we are honoured to continue his legacy and strive for excellence, innovation, and trustworthiness in his memory.

Thank you for trusting us. We look forward to many more years of shared successes, building a brighter, safer, and more sustainable future.

Best regards,  
GAJANAND KUMAWAT  
Managing Director



ANAND KUMAWAT  
Joint Managing Director



# Services

## Turnkey township projects

- staff quarter apartments
- Worker quarters apartments
- Executive bungalows, villas
- public sector building like

school  
auditorium  
dispensary  
temple  
roads etc



## sewage and treatment plant



## High Rise skyscrapers



## Total Cement plant structure like preheater upto 160 meter height



## Power plant building & chimneys



## Cement Grinding unit



## Paper mill unit



## Previous Projects

### M/S ULTRATECH CEMENT LTD.

Balaji Cement Works,  
P.o. - Budawada, Dist. Krishna  
Andhra Pradesh

### M/S ULTRATECH CEMENT LTD.

Awarpur Cement Works.  
P.O. Awarpur Cement Project,  
Taluka: Korpana, District: Chandrapur,  
Maharashtra

### M/S LAFARGE CEMENT LTD.

Lumsung, Shillong (Meghalaya)

### M/S SHREE CEMENT LTD.

Post-Beawar, Ajmer (Rajasthan)

### M/S MURLI INDUSTRIES LTD.

(A unit of Cement Division)  
Post-Korpana, Chandrapur (Maharashtra)

### M/S INDIAN RAYON LTD.

(A unit of Grasim Industries Ltd.)  
Rajshree Cement Factory,  
Post-Malkhed, Gulbarga (Karnataka)

### M/S ULTRATECH CEMENT LTD. PEARL PROJECT

Dhar Cement Works, Vill- Tonki  
Tehsil : Manawar Dist: Dhar  
Madhya Pradesh

### DALMIA CEMENT (BHART) LTD.

SF-630, Tamaraikullam village  
Ariyalur (Tamil Nadu)

### M/S ROCKSTRONG CEMENT LTD.

(A unit of Shree cement Ltd.)  
Post-Ras, Pali (Rajasthan)

### M/S GUJRAT AMBUJA CEMENT LTD.

Post-Rabriyawas, Pali (Rajasthan)

### M/S BANGUR CEMENT LTD.-UNIT III, IV, V

(A unit of Shree cement Ltd.)  
Post-Ras, Pali (Rajasthan)

### M/S GRASIM INDUSTRIES LTD.

(Cement Division -South)  
Post-Ariyalur (Tamil Nadu)

## Our Clients



## INDEX

📍 TIRUCHIRAPPALLI, TAMIL NADU (HEAD OFFICE)

📍 JAIPUR, RAJASTHAN (ADMIN OFFICE)

1. KRISHNA, ANDHRA PROJECT
2. DHAR, MADHYA PRADESH
3. CHANDRAPUR, MAHARASTRA
4. ARIYALUR, TAMIL NADU
5. SHILLONG, MEGHALAYA
6. PALI, RAJASTHAN
7. AJMER, RAJASTHAN
8. GULBARGA, KARNATAKA
9. MUMBAI, MAHARASTRA

## Project Highlights

# Dhar Project

- Successfully constructed **46 civil structures** for a cement plant on a single site in **9 months**.
- Highest no. of manpower in a single project – **1500 labourers for 9 months**.
- Highest structure height – **Preheater measuring 146 metre (Ultratech Cement, Kota)**
- Highest quantity of concrete poured in a single project – **56,375 cubic metre was poured in a span of 9 months (UTCL)**
- Highest quantity of steel used in single project – **7,800 metric ton used in 9 months (UTCL)**



## Project Highlights

# Hydraulic Jump Foam Shuttering

- Trapezoidal and Conical Shuttering are two types of formwork used in construction to create concrete structures. **Using these two, a 2,800 square metre concrete was built in a span of 2.5 months.** This requires a team that is highly skilled and efficient.
- Hydraulic Jump Form Shuttering was used to construct a **62 metre-high silo in just 32 days, covering an area of 9000 square metres.**

These achievements demonstrate the potential of these technologies to revolutionise the construction industry.





## Project Highlights

# A 30-Year Commitment to Safety

In our 30 years of operation, there has not been a single accident or injury on any of our projects. This remarkable achievement is a reflection of our values and serves as a testament to our company's commitment to safety. It is a source of great pride for our employees, our investors, and our customers.



# Awards & Recognitions



## Health Safety & Environment Policy

# Nirmaan Pvt. Ltd. Health, Safety, and Environment (HSE) Policy

### Our Commitment

At Nirmaan Pvt. Ltd., we are committed to safeguarding the well-being of our employees, partners, clients, and the environment. We recognize the importance of environmental responsibility and sustainability in all our endeavours.

### Our key principles:

#### 1. Safety First

Our fundamental principle is "Safety First." We are dedicated to achieving an incident-free workplace and providing a safe environment for all.

#### 2. Compliance

We pledge to adhere to all applicable health, safety, and environmental laws, regulations, and standards, with a commitment to surpassing compliance when possible.

#### 3. Training and Competency

We invest in the continuous training and development of our employees, ensuring that they are equipped with the knowledge and skills to work safely and effectively.

#### 4. Risk Management

We systematically identify, assess, and mitigate risks in our construction activities, involving every employee in maintaining a vigilant approach to safety.

#### 5. Environmental Stewardship

We actively engage in environmentally responsible practices, minimising waste, reducing resource consumption, and seeking opportunities to reduce our carbon footprint.

#### 6. Communication

We foster an open and transparent HSE culture, providing all employees access to vital HSE information and resources to support their safety and environmental efforts.

#### 7. Emergency Preparedness

We maintain thorough emergency response plans and procedures to ensure swift and effective responses to potential incidents.

#### 8. Subcontractors and Partners

We collaborate closely with subcontractors and business partners to ensure that HSE standards align with our commitment to safety and environmental protection.

Our HSE policy is subject to regular review to ensure its relevance and effectiveness. We strongly believe that an uncompromising dedication to HSE principles is essential, both for ethical reasons and for the long-term success of our company. This policy serves as our solemn promise to safeguard the health, safety, and environment for current and future generations.



# Planning, & Construction Process



## Tools & Equipments

S. No.	Item Description	U.O.M	Quantity
1	Cuplock Vertical 1.00 m	Nos.	15075
2	Cuplock Vertical 1.50 m	Nos.	11230
3	Cuplock Vertical 2.00 m	Nos.	15140
4	Cuplock Vertical 2.50 m	Nos.	20255
5	Cuplock Vertical 3.00 m	Nos.	17176
6	M.S Pipe (40NB) 3.0 m	Nos.	17220
7	M.S Pipe (40NB) 6.0 m	Nos.	27630
8	M.S Chali/Jali	Nos.	18555
9	U Jack	Nos.	20130
10	Base Jack	Nos.	20160
11	Ledger Pipe 500mm	Nos.	9730
12	Ledger Pipe 550mm	Nos.	2830
13	Ledger Pipe 600mm	Nos.	3770
14	Ledger Pipe 950mm	Nos.	120562
15	Ledger Pipe 1200mm	Nos.	5060
16	M.S Clamp (Heavy Duty)	Nos.	104585
17	Scaffolding Gugu Nut	Nos.	18330
18	Flange Nut	Nos.	1500
19	Stair Case Tower	Nos.	750
20	Acro Plate	Nos.	2500
21	Doka Shuttering	Set	As per site requirement
22	Jump Form Material	Set	As per site requirement
23	Slip Form Shuttering	Set	2
24	ISMC 100	MT	20
25	ISMC 125	MT	10
26	ISMC 150	MT	15
27	Square Tube	MT	42
28	Backhoe Loader (J.C.B 3DX)	Nos.	1
29	Hydraulic Excavator (Hitachi 200X)	Nos.	1
30	Tractor	Nos.	5

S. No.	Item Description	U.O.M	Quantity
31	Trailer	Nos.	3
32	Tower Crane- 6MT (ACE)	Nos.	3
33	Mobile Tower Crane - ACE 3625	Nos.	1
34	Hydra Crane (ACE- 15MT)	Nos.	2
35	Hydraulic Mobile Crane (Zoomilon- 50MT)	Nos.	1
36	Static Concrete Pump (Schwing Setter)	Nos.	3
37	Transit Miller	Nos.	8
38	Boom Placer 46 Mtr - Schwing Setter	Nos.	1
39	Batching Plant - CP 30	Nos.	2
40	Batching Plant - CP 18	Nos.	1
41	Winch Machine - 3/5MT	Nos.	5
42	Bar bending Machine	Nos.	7
43	Bar Cutting Machine	Nos.	10
44	Electrical Suspended Platform (For Pre - stressing)	Nos.	4
45	De Watering Pump - 5/10 HP	Nos.	5
46	Submersible Pump - 10HP	Nos.	4
47	Submersible Pump - 3HP	Nos.	6
48	Centrifugal Pump- 1.5HP	Nos.	8
49	Centrifugal Pump- 2 HP	Nos.	5
50	Hand Grinding machine- Bosch-AG4	Nos.	10
51	Hand Grinding Machin- Bosch-AG7	Nos.	17
52	Ply Cutting Machine- 4 Inch	Nos.	26
53	Ply Cutting Machine- 7 Inch	Nos.	150
54	Pipe Cutting Machine - 14 Inch	Nos.	40
55	Led Flood Light - 400Watt (Sodium Vapour Lamp)	Nos.	25
56	Led Flood Light - 100Watt (LED)	Nos.	45
57	Concrete Drill Machine	Nos.	76
58	Wooden Drill Machine	Nos.	10
59	Concrete Breaker Machine	Nos.	140
60	Concrete Mixer - 10 Bag Mix	Nos.	10
61	Concrete Mixer - 5 Bag Mix	Nos.	3
62	Concrete Mixer - 1 Bag Mix	Nos.	4

S. No.	Item Description	U.O.M	Quantity
63	Concrete Vibrator - 3 Phase	Nos.	19
64	Concrete Vibrator - Single Phase	Nos.	12
65	Concrete Vibrator - Petrol	Nos.	7
66	Needle - 40 MM	Nos.	37
67	Needle - 60 MM	Nos.	61
68	Plate Compactor - Three Phase	Nos.	3
69	Plate Compactor - Single Phase	Nos.	4
70	Hand Grouting Mixer- 2500 Watt	Nos.	10
71	Office Container	Nos.	6
72	Cargo Container	Nos.	4
73	Air Blower - 620 Watt (Bosch)	Nos.	25
74	Air Compressor - Single Phase	Nos.	2

### Lab Equipments:

1	Slump cone with tamping rod	Nos.	5
2	Electric oven	Nos.	2
3	Standard cube moulds – 150mm size	Nos.	45
4	Balance: Digital balance of 10kg capacity	Nos.	3
5	IS Sieve Sets	Nos.	2
6	Cube crushing machine with 2 dial gauges & brick plate attachment	Nos.	2
7	Core cutters with collars & Hammer	Nos.	4
8	Mortar testing apparatus (Penetrometer)	Nos.	1
9	Digital thermometer – 200C & ordinary thermometer-50C	Nos.	5
10	Screw gauge	Nos.	3
11	Spatula	Nos.	10
12	Moisture meter	Nos.	3
13	Digital Vernier Calliper	Nos.	2
14	Digital stop watch	Nos.	3
15	Standard steel tapes	Nos.	5
16	Measuring cylinders- 50ml, 100ml, 200ml, 500ml, 1000ml	Nos.	2



## Our Sister Companies

- BDKL Construction Pvt. Ltd.
- Unnati Marigold Realtors LLP
- Ronak Infra Developers
- VisionCraft Construction Pvt. Ltd.



## Project Gallery

Thank you for taking the time to read through our portfolio. We are proud of the work we have done, and we are excited to share even more photos of our projects with you.

We hope you enjoy browsing through our gallery and getting a better sense of our capabilities. We understand that choosing the right industrial construction contractor is a big decision. That's why we encourage you to contact us with any questions you may have. We would be happy to discuss your upcoming project in more detail and provide you with a free consultation.



To view our project photo gallery, simply scan the QR code

## Consult with Us

---

Contact: +91 86965 55295  
Company: +91 96490 10088  
nwpl2001@yahoo.com

Admin Office:  
565, Moti Nagar Vaishali  
Jaipur - 302021  
info@nirmaanworks.com

Head Office:  
129/1-C, Chennai Bye-Pass Road  
Aryamangalam, Tiruchirappalli  
Tamil Nadu, India - 620010  
www.nirmaanworks.com