

Common Sense and Common Courtesy

Walton Lake is a beautiful, peaceful , private community for fishing, swimming, family and fun! *It is up to each of us to keep it that way.*

Please do not litter. Help keep our beach, picnic areas, bath house and playgrounds clean and safe.

Please make careful choices for your safety, your family's safety, and the safety of all members and guests enjoying a day at the lake.

When in doubt, always choose safety and kindness. All of us can help keep all of us safe.

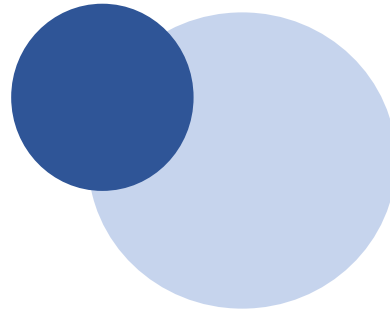
Safety First at all times

Note: This is not an all-inclusive safety document.

Rather, it is a reminder to our social members and cottage owners about the importance of safety-related rules and guidelines.

It is everyone's responsibility to put safety first.

Walton Lake is a
members only
recreation venue for
swimming, fishing,
family and fun!



For a membership application or pavilion rental information, visit www.waltonlakecrestline.com

For other information email info@waltonlakecrestline.com

Updated Feb 1, 2026



Safety First!

For personal safety or health emergencies, dial 9-1-1

Beach and Picnic Area Safety

- Parents or other adult caregiver must be present and are fully responsible for their minor child's safety and behavior on the beach and in the picnic/bath house areas
- No running, pushing, frisbee*, sport ball-playing or general "horseplay" is allowed. *The large grassy area near the tennis courts is available.
- Animals are not allowed on the beach, in the water or the immediate surrounding area
- No smoking, vaping, alcohol or glass containers
- All trash should be placed in the trash containers or taken home with you

Social Members must bring their membership cards when visiting the lake.

Membership may be occasionally checked and verified.

Water, Swim and Platform Safety

- Parents or other adult caregivers must be present and are fully responsible for their minor child's safety and behavior in the water or on/near the platform
- No dunking or other roughhousing
- No hiding or playing underneath the floating pads/rafts
- One at a time on the slide ladder
- Wait for swimmers to clear the water in front of the slide before sliding down
- Head first sliding is not safe and is not permitted on the slide
- No diving off the platform walkway or the sides of the platform, dive or jump only from the front end of the platform forward
- No running on the platform
- Rinse and stow all borrowed toys or floats in the shed storage area before leaving

There is no boating at Walton Lake.

This includes *but is not limited to* any flotation device with an oar or a paddle, multi-passenger closed-bottom tubes, paddle- or motorboats or other similar item.

The speed limit throughout the Walton Lake community is

13 mph

Be extra careful of children along the roads. Drivers are expected to obey stop signs and no parking signs.



It is everyone's responsibility to put safety first.

Please do your part.