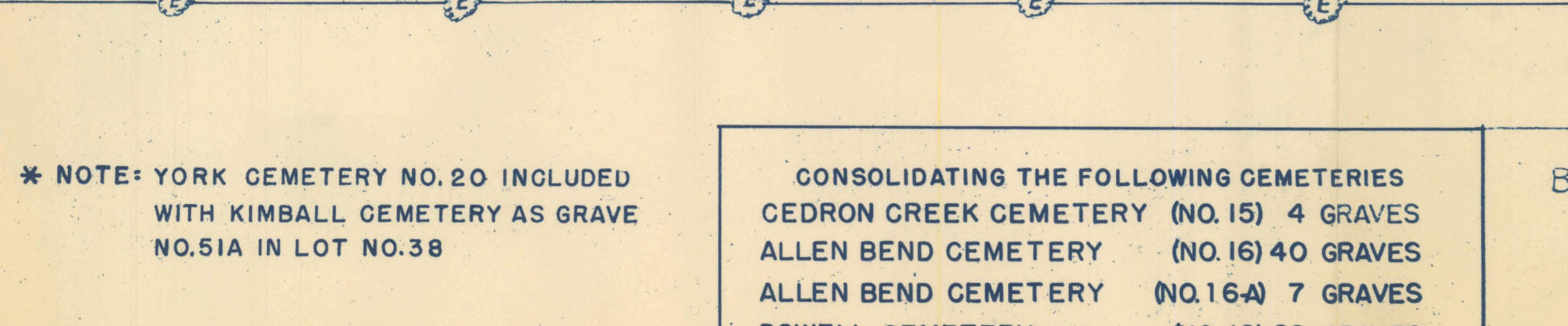
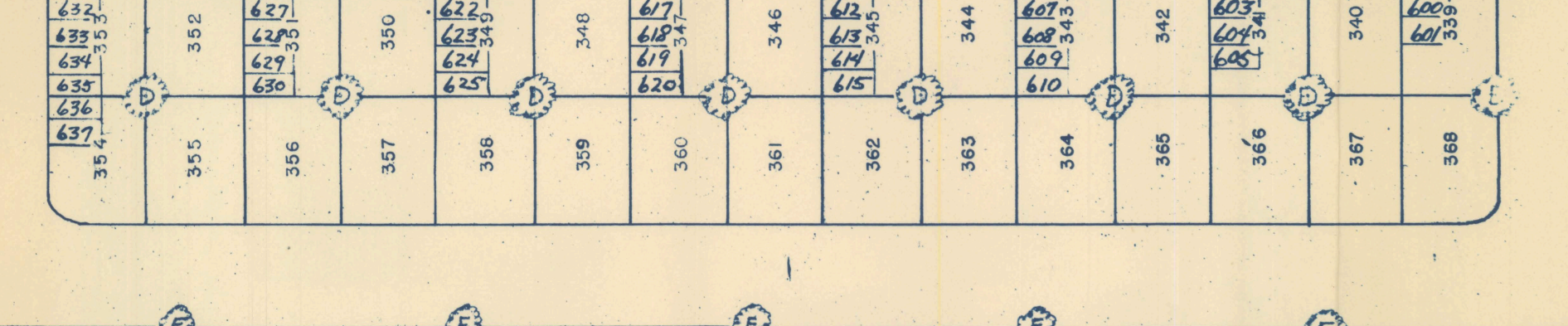
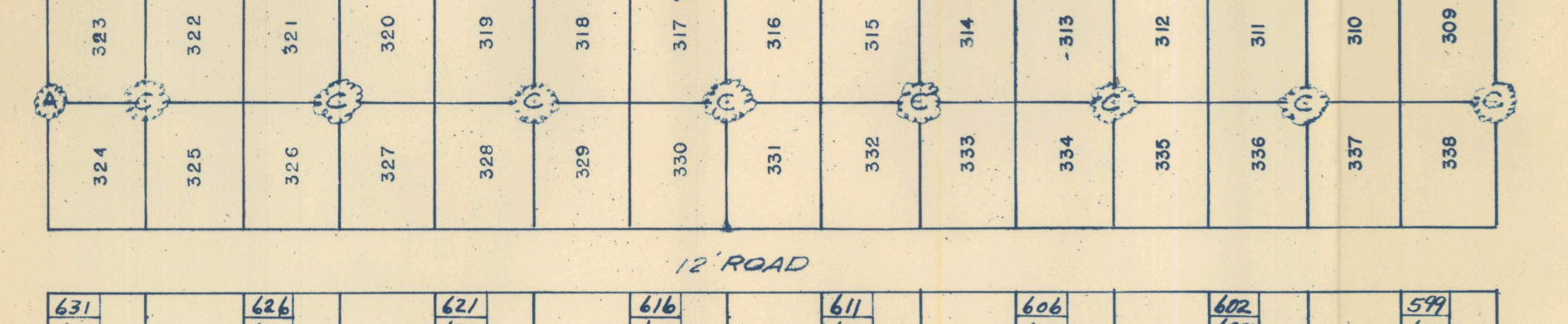
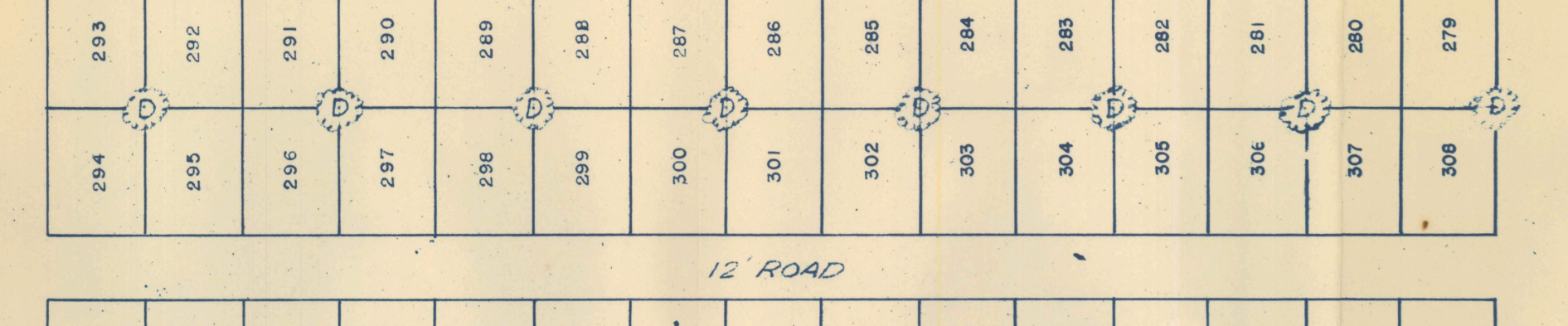
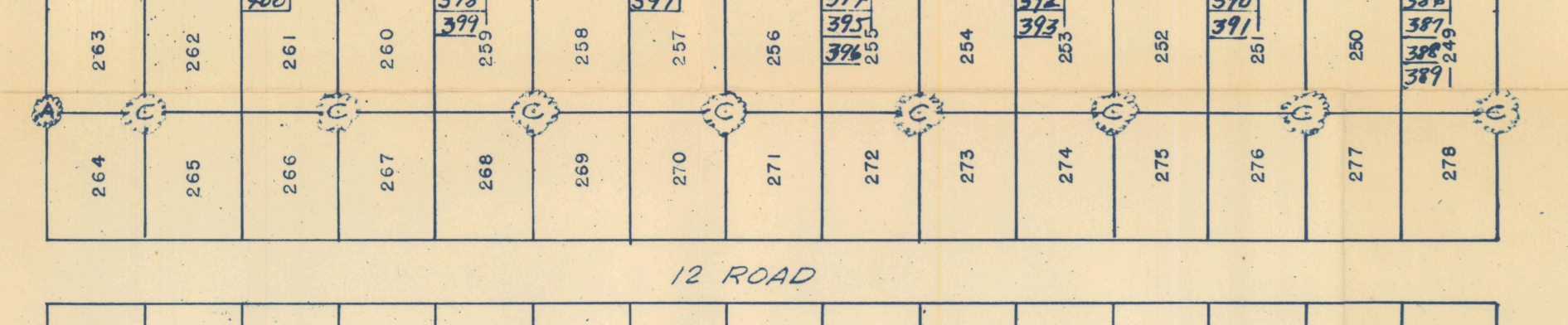
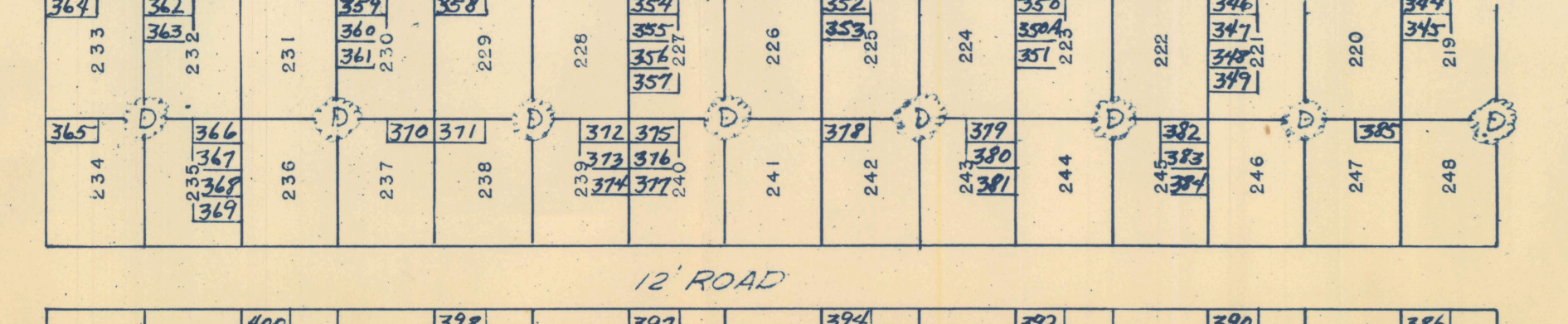
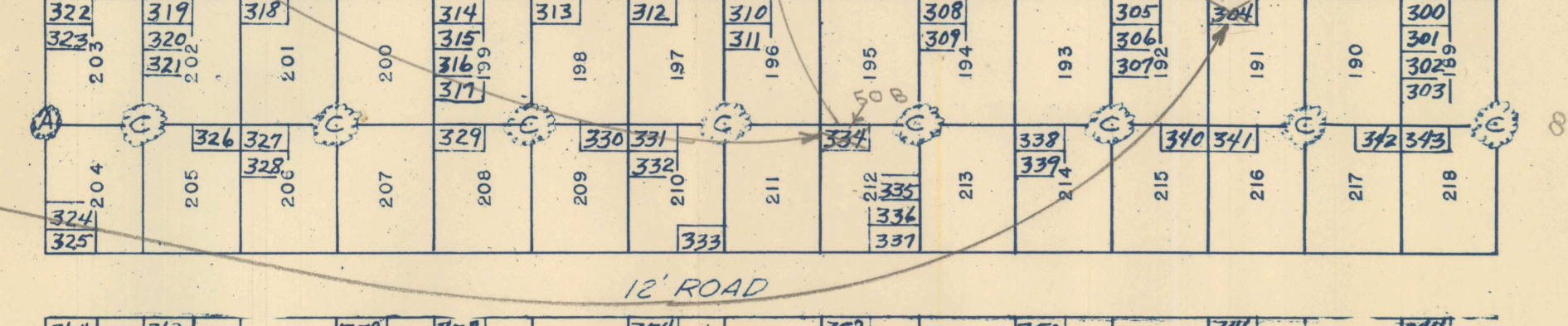
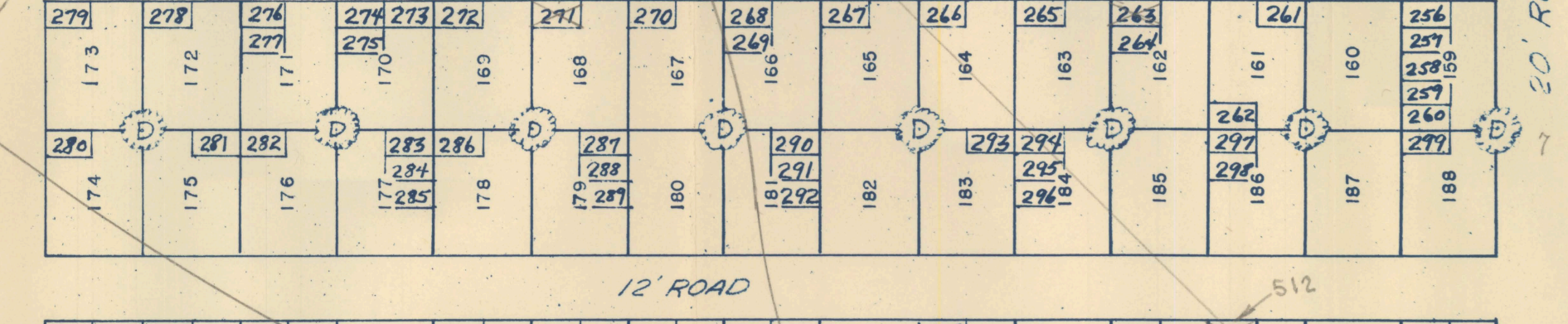
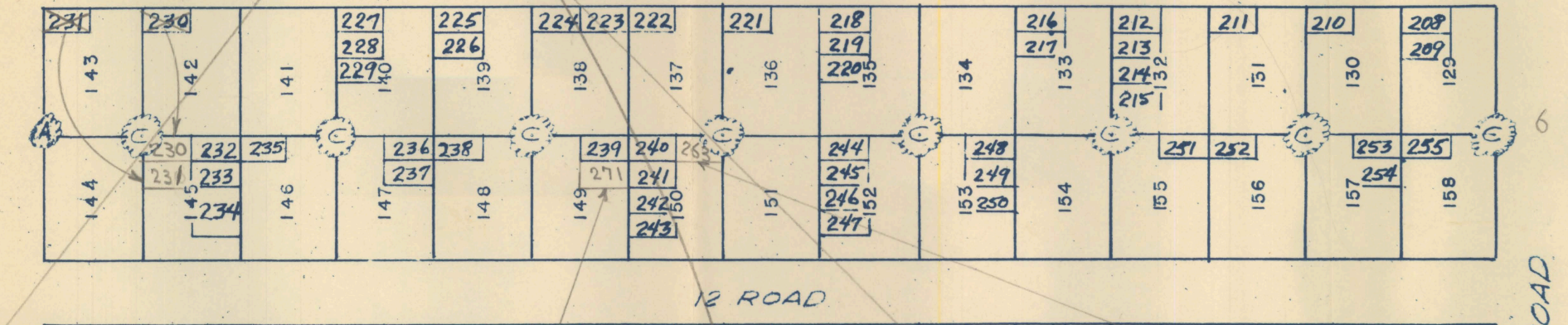
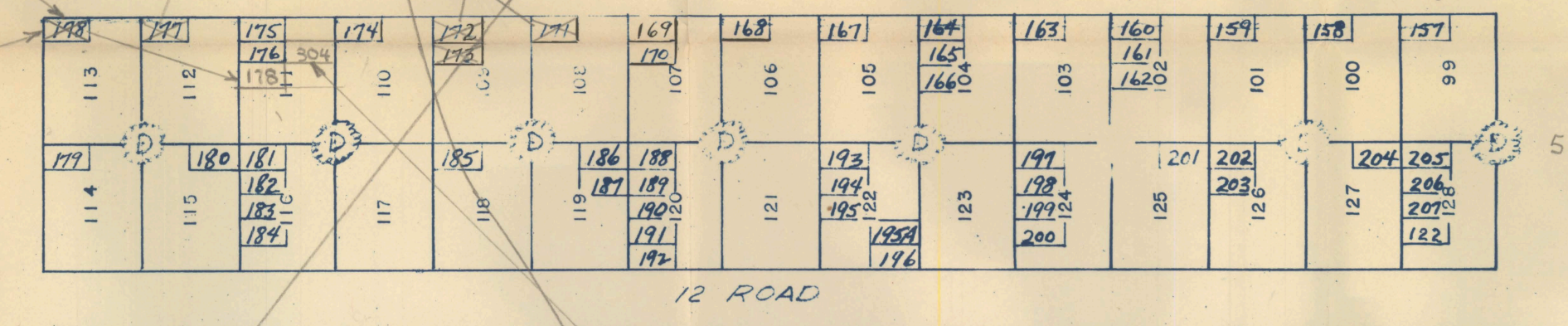
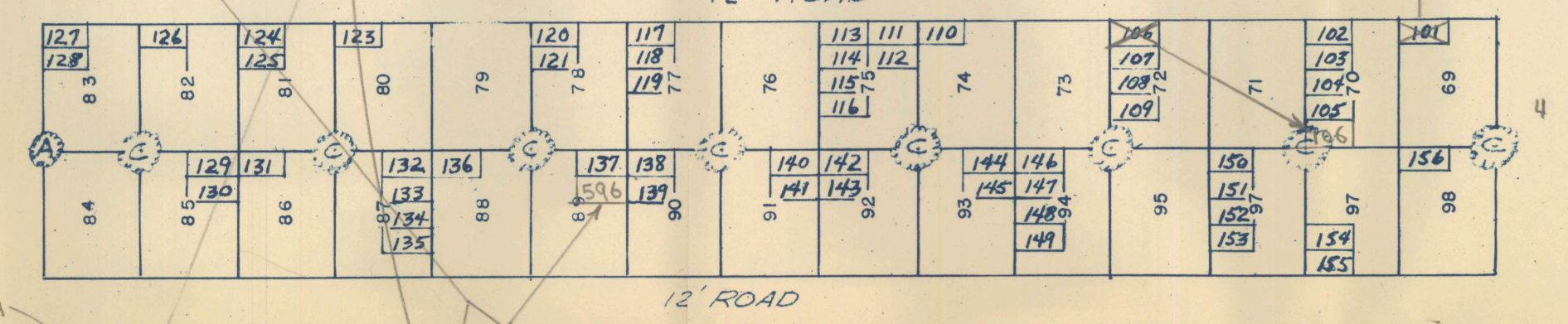
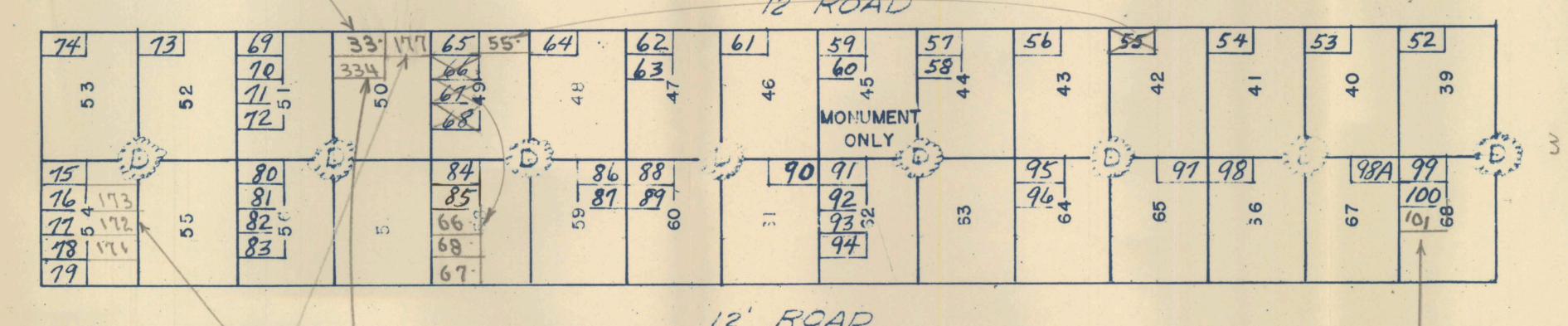
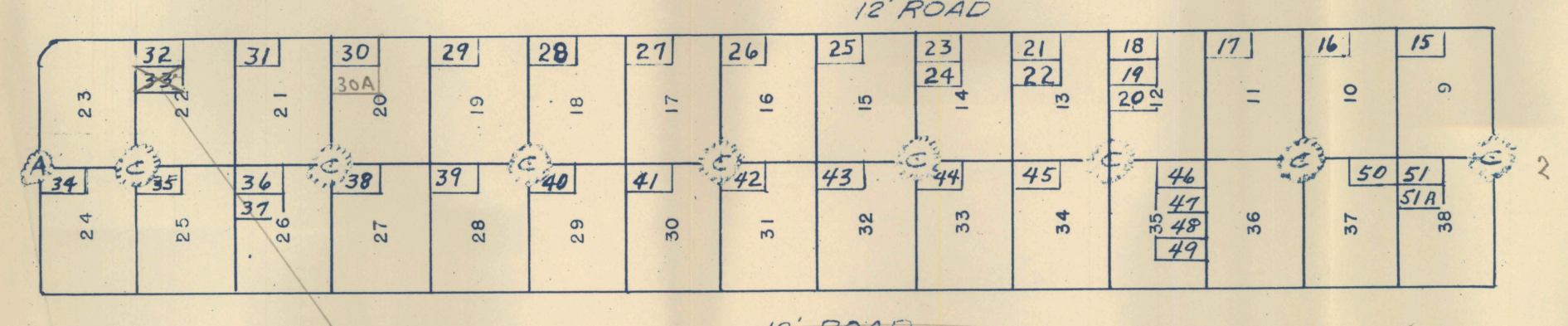
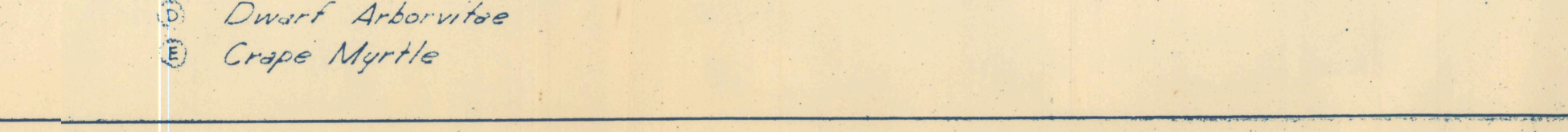
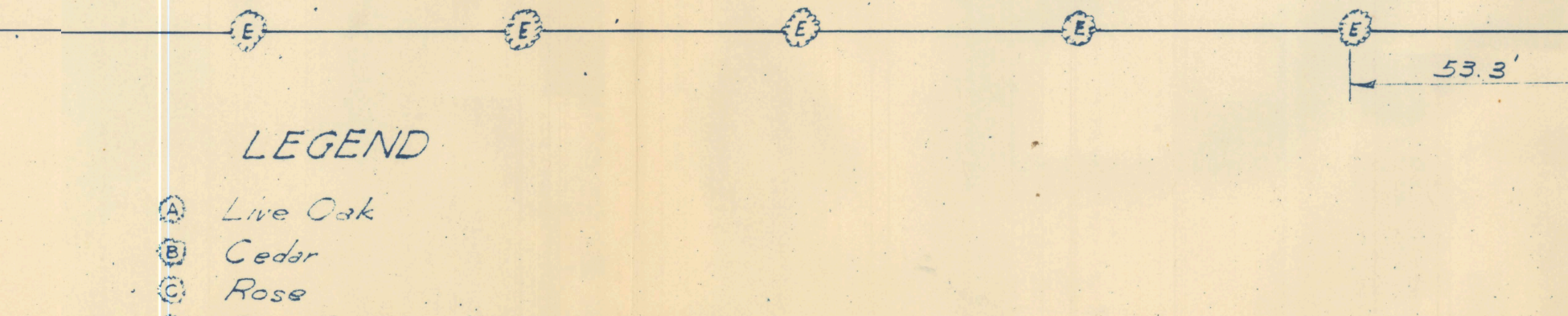
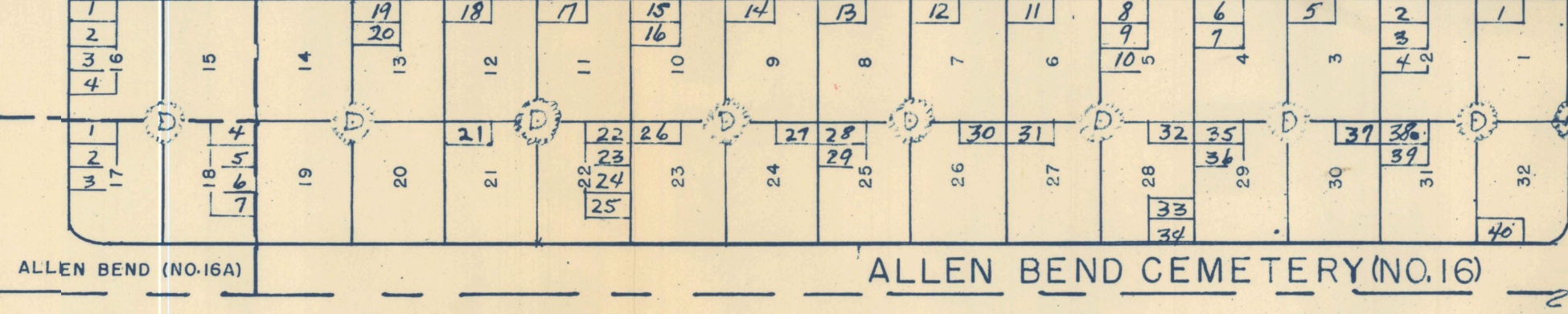
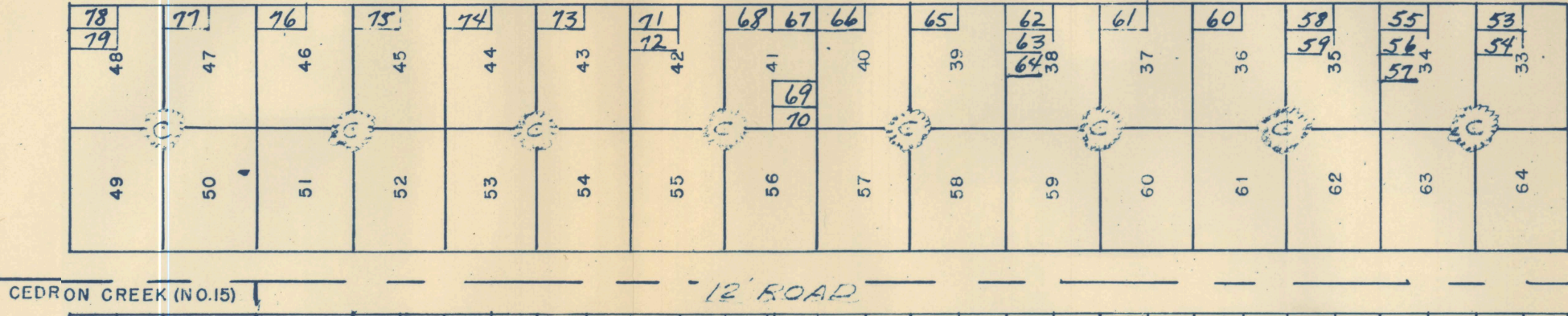
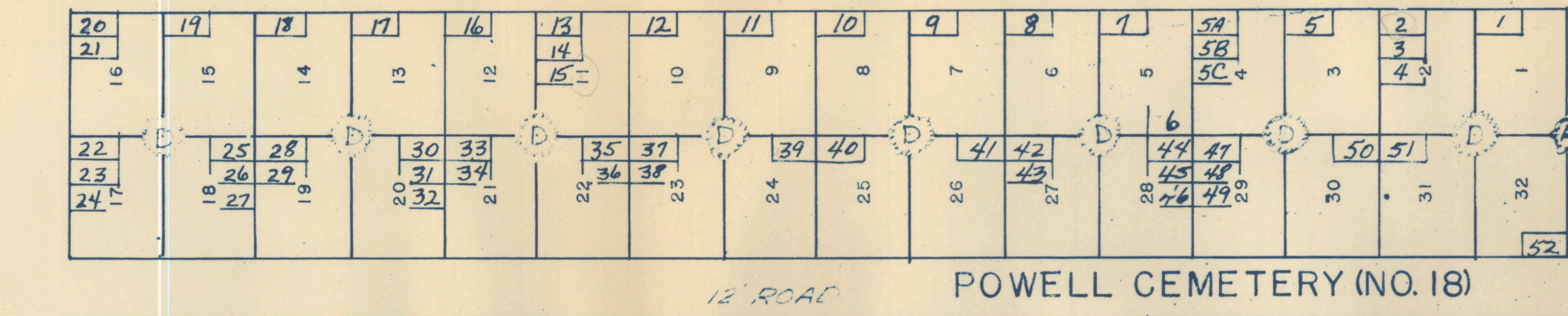
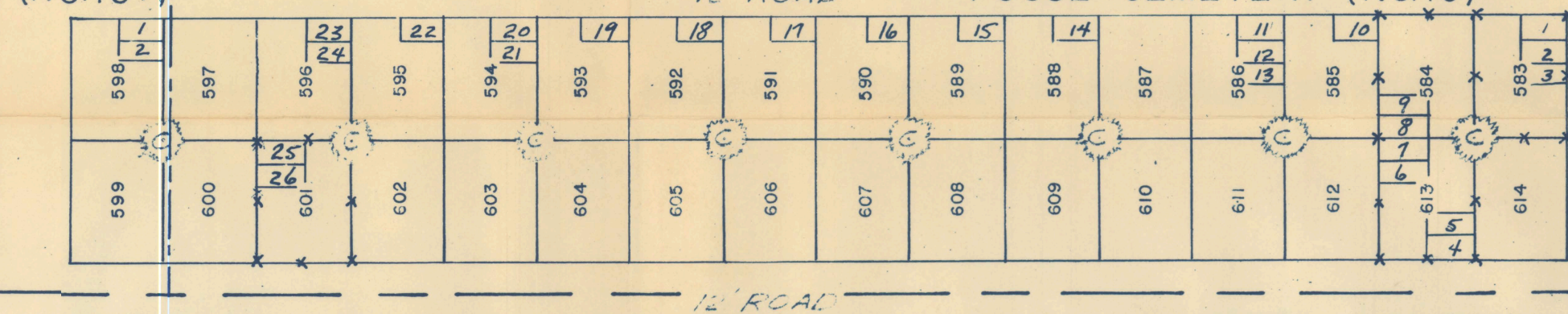
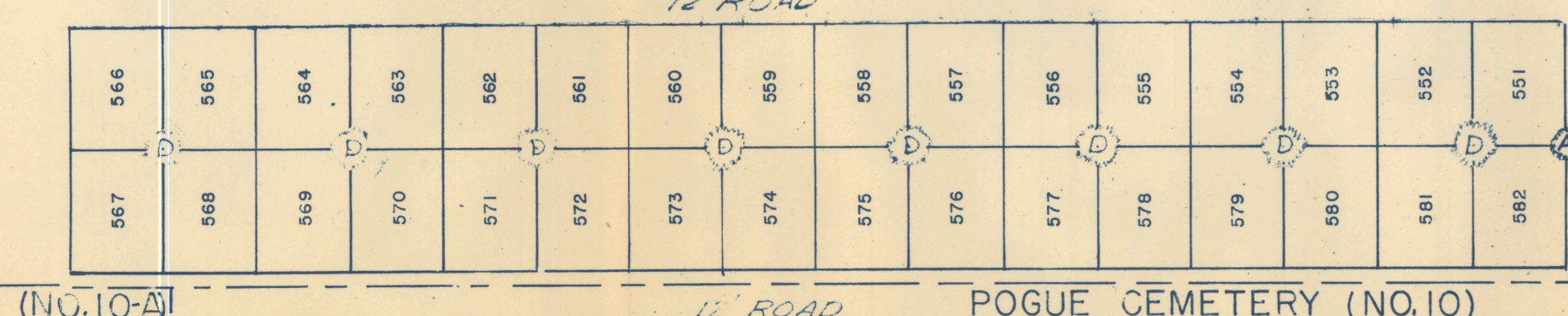
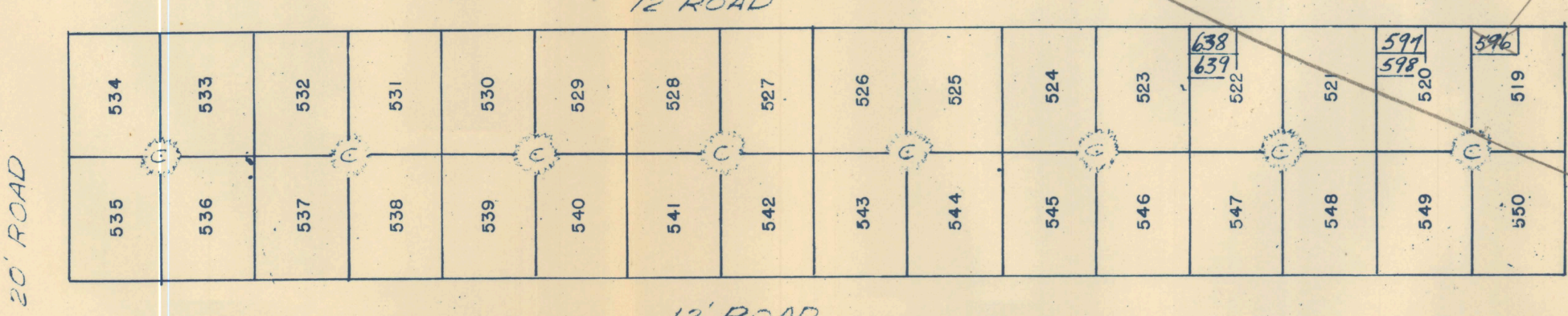
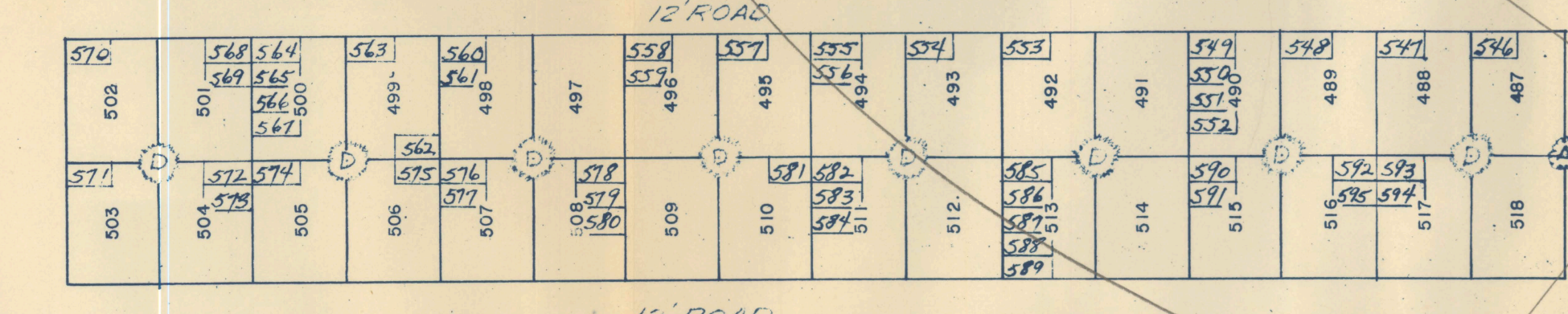
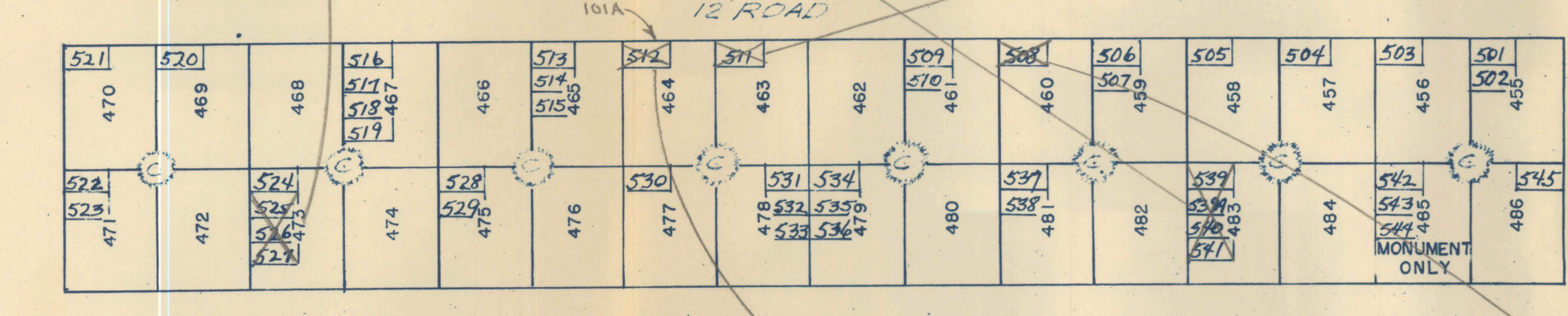
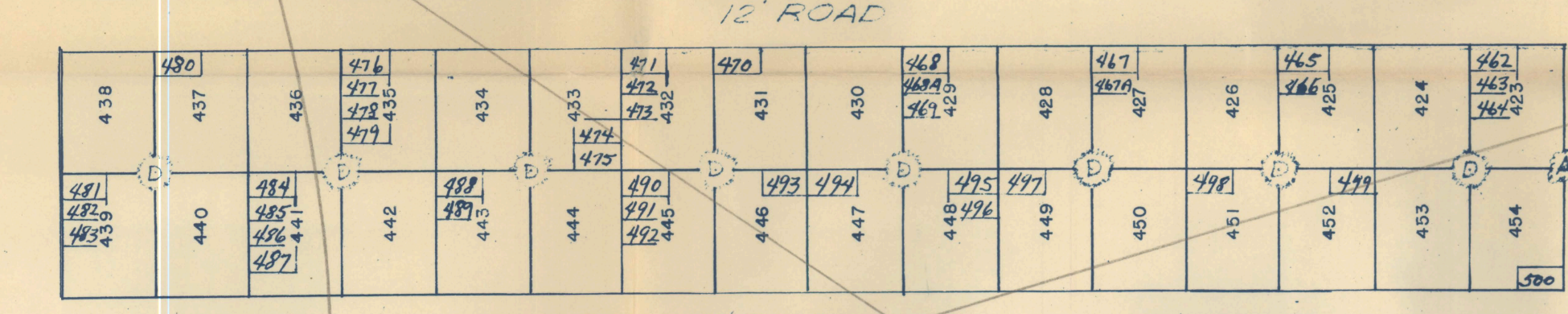
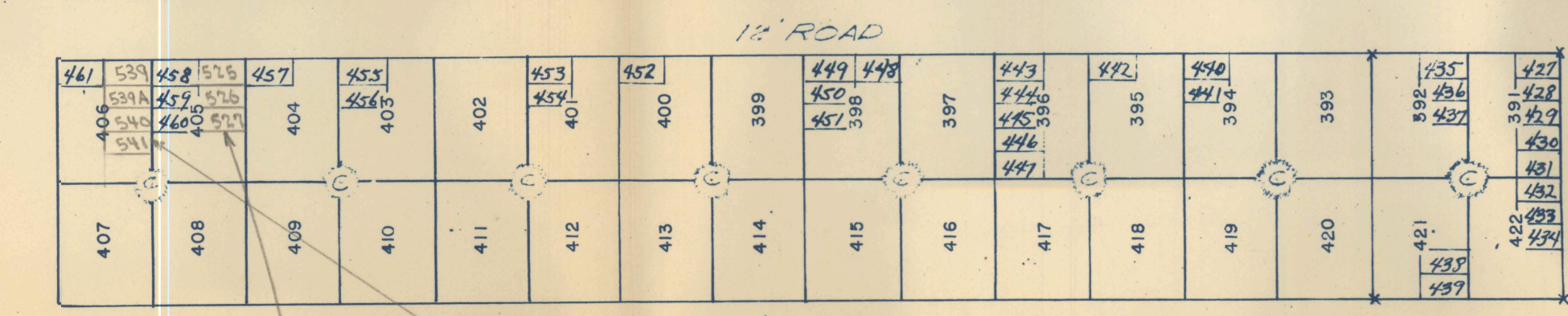
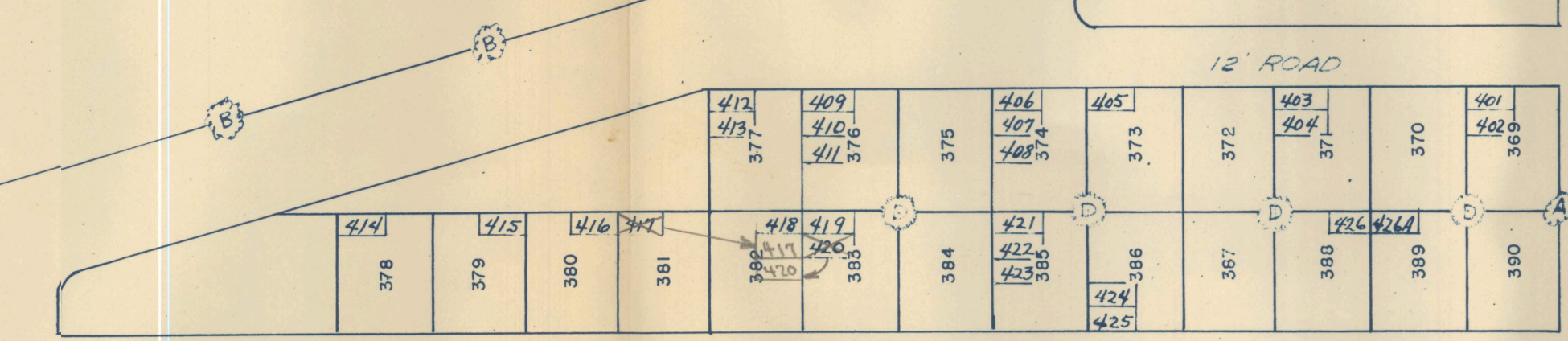
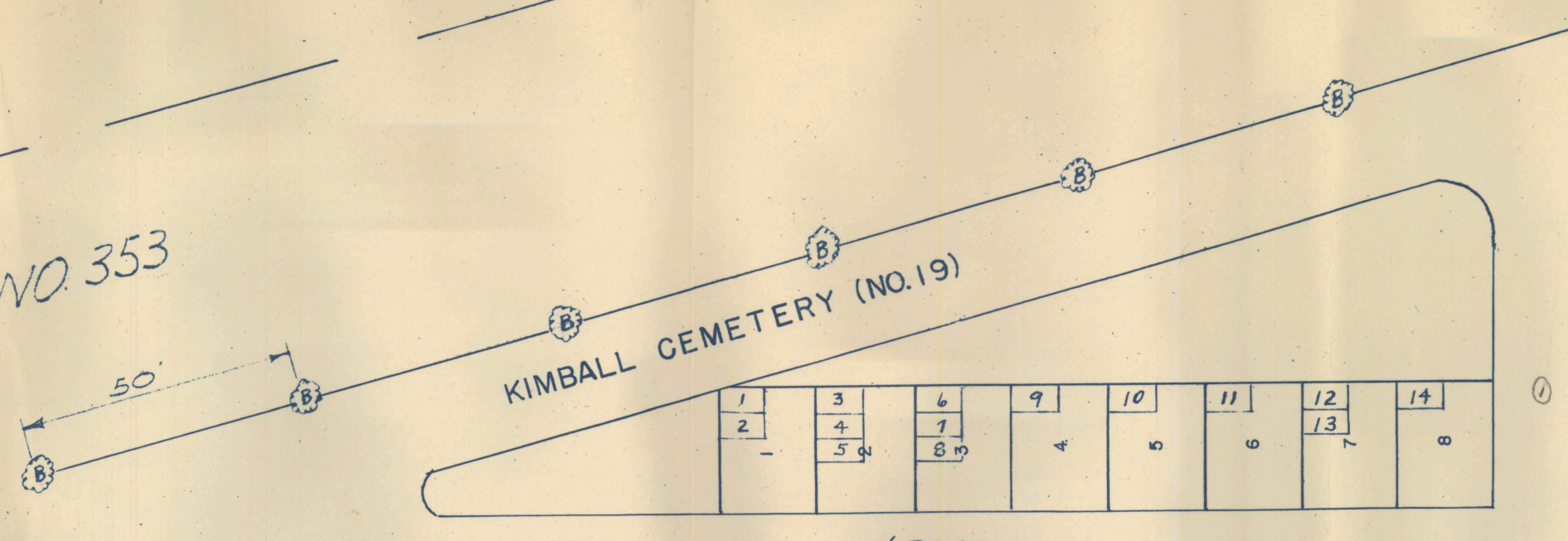


STATE HIGHWAY NO 353



Vertical grid letters A through S along the right edge of the map.

- LEGEND**
- (A) Live Oak
 - (B) Cedar
 - (C) Rose
 - (D) Dwarf Arborvitae
 - (E) Grape Myrtle

* NOTE: YORK CEMETERY NO. 20 INCLUDED WITH KIMBALL CEMETERY AS GRAVE NO. 51A IN LOT NO. 38

CONSOLIDATING THE FOLLOWING CEMETERIES
 CEDRON CREEK CEMETERY (NO. 15) 4 GRAVES
 ALLEN BEND CEMETERY (NO. 16) 40 GRAVES
 ALLEN BEND CEMETERY (NO. 16A) 7 GRAVES
 POWELL CEMETERY (NO. 18) 82 GRAVES
 * KIMBALL CEMETERY (NO. 19) 647 GRAVES
 POGUE CEMETERIES (NOS. 10 & 10A) 28 GRAVES

BRAZOS RIVER BASIN, TEXAS
 WHITNEY RESERVOIR
 BRAZOS RIVER, TEXAS
 LAYOUT MAP
 RELOCATION OF CEMETERIES
 SCALE: 1" = 30'

