

NORTHEAST SECTION KIMBALL CEMETERY

MASTER PLOT PLAN

SECTION # WEST SIDE

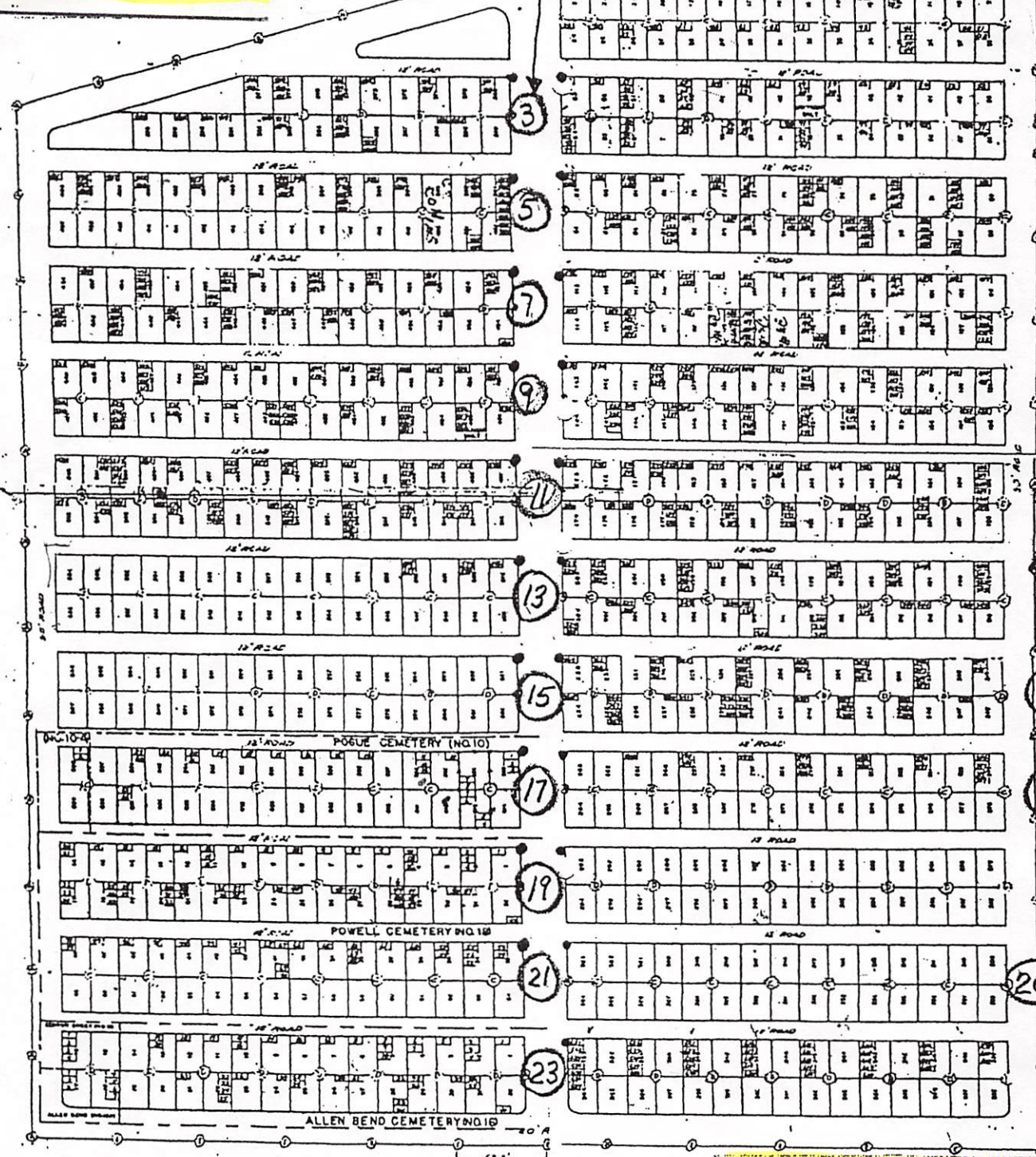
SECTION # EAST SIDE



STATE HIGHWAY 174

NORTHWEST SECTION KIMBALL CEMETERY

1-N



LEGEND

- ① Live Oak
- ② Cedar
- ③ Pine
- ④ Conical Abies
- ⑤ Cypress

SOUTHWEST SECTION KIMBALL CEMETERY

SOUTHEAST SECTION KIMBALL CEMETERY

STEEL TONE CEMETERY NO. 20 AND ADJACENT WITH KIMBALL CEMETERY AS SHOWN IN P.L. 114 OF 1933

INCORPORATING THE FOLLOWING CEMETERIES:
 GEORGE CREEK CEMETERY NO. 18 4 GRAVES
 ALLEN BEND CEMETERY NO. 16 40 GRAVES
 ALLEN BEND CEMETERY NO. 18 7 GRAVES
 POWELL CEMETERY NO. 18 22 GRAVES
 KIMBALL CEMETERY NO. 18 47 GRAVES
 POGUE CEMETERY (NO. 10) 24 GRAVES

BRAZOS RIVER BASIN,
 WHITNEY RESER.
 BRAZOS RIVER TRAIL
 LAYOUT MAP
 RELOCATION OF CEMETERIES
 SCALE: 1"=30'

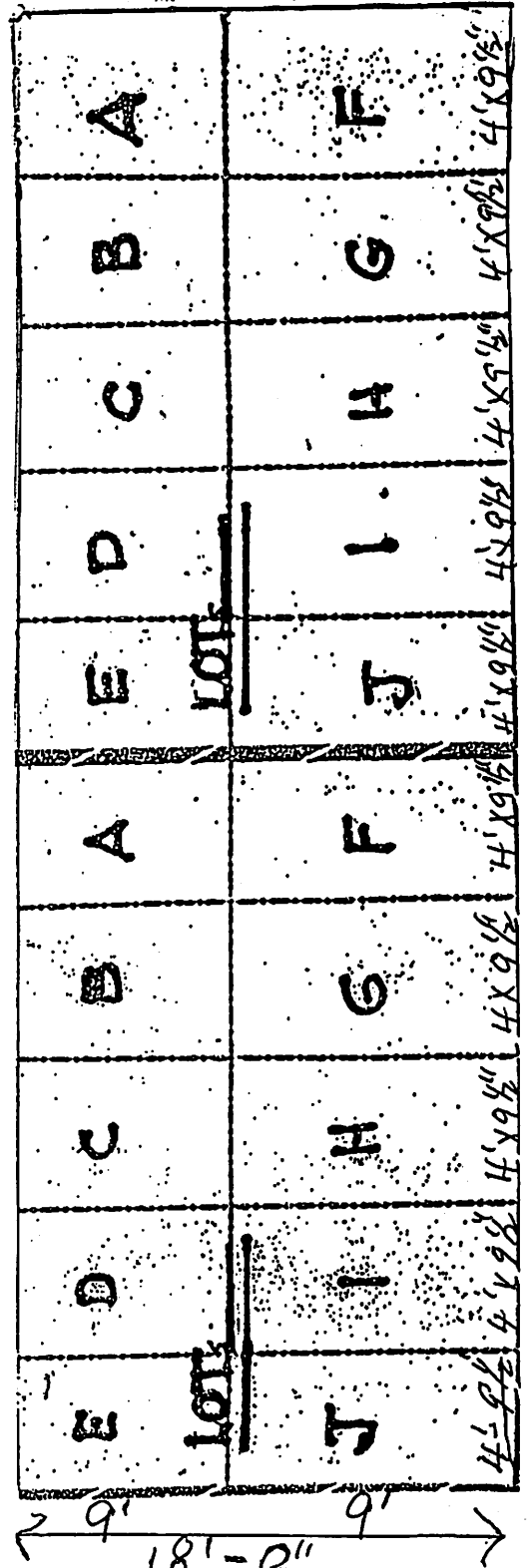
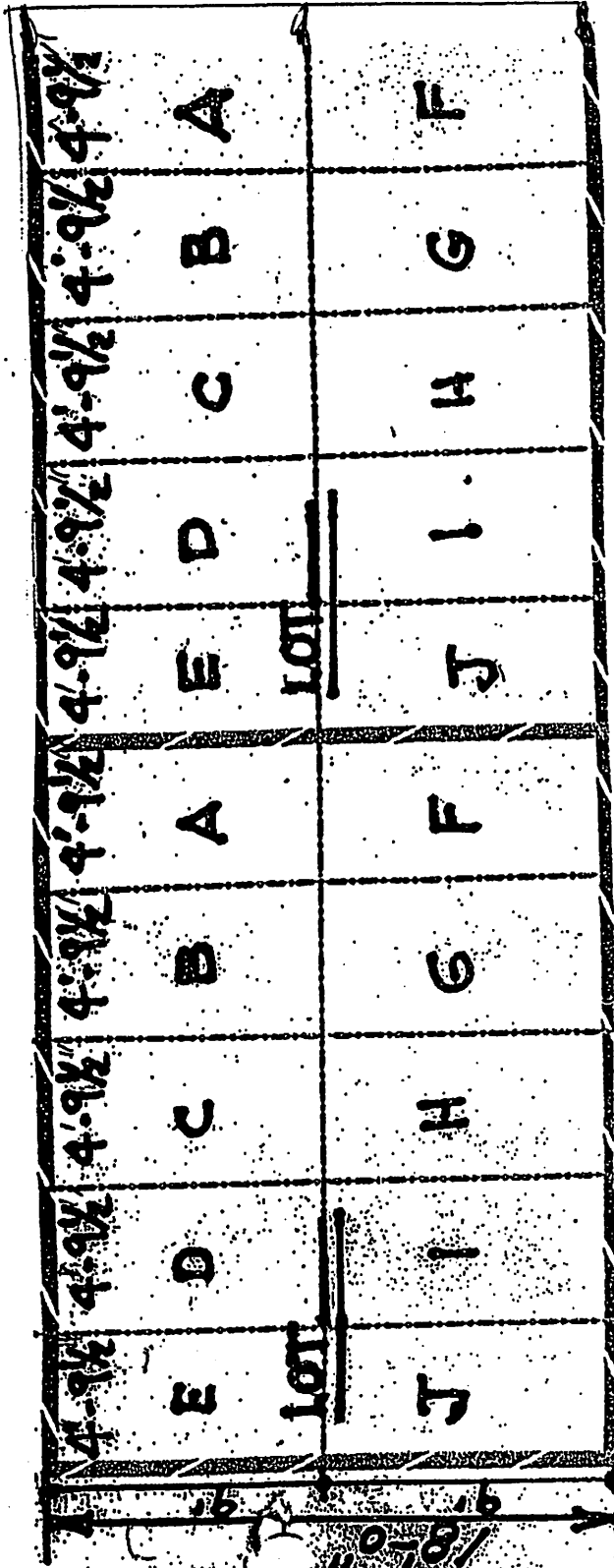
SIE

Kimball Cemetery

Westside

Eastside

Center Road North



Circled numbers
Outside of map
Represent the
SECTION

Small numbers on
Inside of lot is the
LOT number

Alphabet represent the
GRAVE space

There are 10 grave
Spaces in each lot

CENTER ROAD_SOUTH