

**Voodoo Linerlock.** Assisted opening. 4.5" (11.43cm) closed. 3.5" (8.89cm) black finish stainless blade. Extended tang. Pocket clip. Thumb stud. Multi color and pattern ABS handle. Boxed.



**CN300564BE** Bear artwork..... Retail \$8.95



**CN300564EG** Eagle artwork. .... Retail \$8.95



**CN300564WF** Wolf artwork. .... Retail \$8.95



**CN4002 Axis Lock.**  
4.75" (12.07cm) closed. 3.75" (9.53cm) gray finish 440 stainless blade. Black G10 handle. Lanyard hole. Pocket clip. Thumb stud. Boxed. .... Retail \$35.95



**CN210992 Slick Sniper I.** 8" overall. 3.5" tanto blade. One piece black coated stainless construction. Cord wrapped handle. Black hard plastic sheath with stainless clip and lanyard. .... Retail \$9.95

**Neck Knife.** 6.75" overall. 3" stainless tanto blade. Black ABS handle. Black ABS neck sheath. Integrated whistle on sheath. Boxed.



**CN211430BL** Blue titanium coated blade..... Retail \$8.95



**CN11430BK** Black finish blade. .... Retail \$6.95



**CN211550 Tactical Neck Knife.**  
5.5" (13.97cm) overall. 3.25" (8.26cm) black finish stainless blade. Black G10 handle. Full, extended tang. Lanyard hole. Metal belt clip. Cord lanyard. Black molded plastic belt sheath. Boxed..... Retail \$12.95



**CN211187 Short Skinner.** 6.25" overall. 3" stainless skinner blade. Full tang. Black pakkawood handle. Black nylon belt sheath. .... Retail \$8.95



**CN210832 Fixed Blade.**  
7" overall.  
3.38" black finish stainless tanto blade.  
Full tang. Black cord wrapped handle. Lanyard.  
Also comes with 3" overall fire starter with 1.5" rod. Black nylon belt sheath holds both items. .... Retail \$9.95



**CN211549 Skull Blade Dagger.**  
9.5" (24.13cm) overall.  
5" (12.7cm) two-tone finish stainless blade. Black cord wrapped handle. Black nylon belt sheath. Boxed..... Retail \$15.95



**CN210233 Double Defense.**  
Includes two 7" overall daggers with 3.88" stainless double edged blades. Black rubber handle with Lanyard hole. Both daggers store in a black nylon belt sheath..... Retail \$11.95

#### Survival Fixed Blade.

7.5" overall. 4.25" black finish stainless clip point blade. Grooved rubber handle with stainless guard. Black nylon belt sheath.



**CN211360BK** Black handle. .... Retail \$7.95



**CN211360DS** Desert tan handle. .... Retail \$7.95



**CN211360GN** OD green handle. .... Retail \$7.95



**CN211538 Patriot Thrower Set.** 6.5" (16.51cm) overall. 3.5" (8.89cm) black finish stainless blade. Black cord wrapped handle. Full, extended tang. Finger ring. Set of three. Patriotic skull blade artwork. Black nylon belt sheath. Boxed. .... **Retail \$21.95**



**CN211535 Three Piece Throwing Knife Set.** 8" (20.32cm) overall. 3.75" (9.53cm) two-tone finish stainless blade. One-piece construction. Black nylon belt sheath. Boxed. .... **Retail \$19.95**



**CN210711 Rite Target Throwing Knives.** Three Piece set. 9.75" overall 6" 420 stainless double edge blade. Textured black composition handle. Lanyard hole. Black nylon belt sheath. .... **Retail \$32.95**



**CN21116103 Throwing Knife Set.** Knives are 10" overall with 2" sharpened double edge tip. One piece stainless construction. Black nylon belt sheath holds all three knives. .... **Retail \$23.95**

### Fixed Blade.

7.13" overall. 3.5" stainless karambit blade. Black finger grooved ABS handle. Full, extended tang. Finger ring. Glass breaker. Black ABS neck sheath. Boxed.



**CN211431BK**  
Black finish blade.  
..... **Retail \$9.95**



**CN211431RB**  
Spectrum finish blade.  
..... **Retail \$9.95**



**CN211462 Karambit.** 8.5" overall. 4.25" Tiger Stripe camo finish stainless karambit blade. Black ABS handle. Full, extended tang. Finger ring. Black nylon belt sheath. Boxed. .... **Retail \$18.95**



**CN211547 Throwing Knife Set.** 7.75" (19.69cm) overall. 4.25" (10.8cm) two-tone finish double edge stainless blade. Black cord wrapped handle. Black nylon belt sheath. Boxed. .... **Retail \$13.95**



**Kunai Thrower Set.** 9" (22.86cm) overall. 5" (12.7cm) two-tone finish stainless blade. Cord wrapped handle. Finger ring. Full, extended tang. Set of three. Black nylon belt sheath. Boxed.



**CN211537BL** Blue..... Retail \$19.95



**CN211537RD** Red..... Retail \$19.95

### Throwing Knife Set.

9" (22.86cm) overall. 5.5" (13.97cm) two-tone finish double edge stainless blade. One-piece construction. Black nylon belt sheath. Boxed.



**CN211415BL** Black and blue blade..... Retail \$19.95



**CN211415RD** Black and red blade..... Retail \$19.95



**CN211563 Skull Thrower Set.** 8.5" (21.59cm) overall. 4" (10.16cm) black finish stainless blade. One-piece construction. Lanyard hole. Set of three. Skull handle artwork. Black nylon belt sheath. Boxed..... Retail \$17.95



**CN21095303 Black Streak Triple Thrower Set.** Features 7.88" overall throwing knives with 4" double edged blades. One piece black coated stainless construction with two toned black and silver blades. Slot cutout design handle. Includes three throwing knives. Black nylon belt sheath holds all knives. .... Retail \$15.95



**CN21095403 Silver Shadow Set.** Includes three 8.5" overall all stainless throwing knives with 4.5" blade. Lanyard hole. Black nylon belt sheath. .... Retail \$13.95



**CN211460 Three Piece Throwing Set.** 9" overall. 5.5" double edge stainless blade. One each blade color: red, blue, green. Black nylon belt sheath. Boxed..... Retail \$19.95



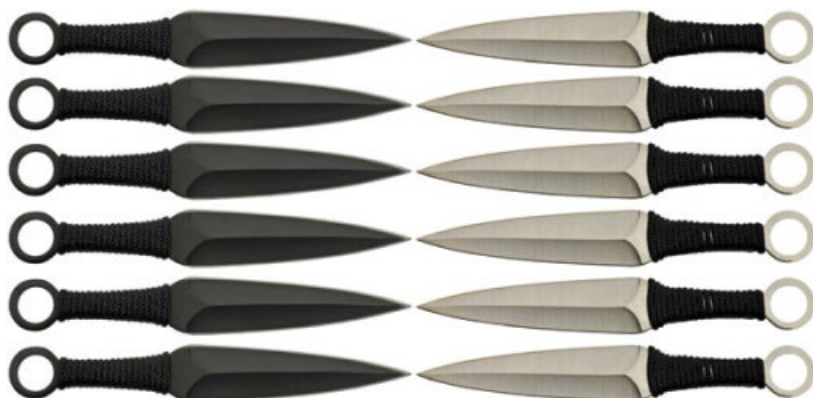
**CN211414CT Throwing Knife Set.** 6" (15.24cm) overall. 4.5" (11.43cm) double edge stainless blade. Cheetah finish one-piece construction. Boxed..... **Retail \$12.95**



**CN211230SL Three Piece Knife Throwing Set.** 10" overall. 3.38" satin finish stainless double edge blade. Full tang. One piece stainless construction with grooved design. Contoured handle. Black nylon belt sheath holds all. Boxed. .... **Retail \$31.95**



**CN211555 Throwing Knife Set.** 7.75" (19.69cm) overall. 4.25" (10.8cm) double edge stainless blade. Finger ring. One-piece construction. One of each finish: Red, Satin, Black and satin, Blue, Gold, and Spectrum. Boxed. .... **Retail \$25.95**



**CN211540 Twelve Piece Two Team Kunai Set.** 6" (15.24cm) overall. 3.5" (8.89cm) stainless blade. Black cord wrapped handle. Finger ring. Six each blade finish: satin and black. Boxed. .... **Retail \$35.95**

**Three Piece Thrower Set.** 5.5" (13.97cm) overall. 3.25" (8.26cm) stainless blade. One-piece construction. Black nylon belt sheath. Boxed.



**CN211536BL Blue and black finish.** .... **Retail \$9.95**



**CN211536RD Red and black finish.** .... **Retail \$10.95**



**CN211536SL Satin and black finish.** .... **Retail \$10.95**



**CN211534 Six Piece Throwing Knife Set.** 5.5" (13.97cm) overall. 3.75" (9.53cm) stainless blade. Black stainless handle. One of each blade finish: Blue, gold, green, orange, purple, and red. Black nylon belt sheath. Boxed..... **Retail \$18.95**





**CN210939 Throwing Knife 12 Piece Set.** Knives are 6" overall. 3.5" double edge blade. One piece stainless construction with two tone black and satin finish. Skeletonized handle. Black nylon storage roll with Velcro closure and belt loop.....**Retail \$35.95**



**Survival Knife.**

12" overall. 6.75" stainless sawback blade. Hollow textured aluminum handle. Unscrew pommel to reveal compass. Stored inside handle is survival kit. Black leatherette sheath with sharpening stone.

**CN210681BK** Black finish handle.....**Retail \$17.95**  
**CN210681SL** Silver finish handle. ....**Retail \$18.95**



**CN926737 Combat Knife.**

14" overall. 8.88" stainless blade with blood groove. Black checkered composition handle with stainless guard and butt. Black leather belt sheath.....**Retail \$26.95**



**CN211502 Skull Push Dagger.**

3.25" (8.26cm) overall. 1.5" (3.81cm) black finish double edge stainless dagger blade. Black synthetic handle. Ball chain lanyard. Black synthetic neck sheath with skull inlay. Boxed.

**Retail \$8.95**



**PA211511 Tri Blade Striker Spear.**

9" (22.86cm) overall. 5" (12.7cm) black oxide coated stainless blade. Black cord wrapped handle. One-piece construction. Black nylon belt sheath. Boxed. ....**Retail \$44.95**

**Hunter.**

8.5" (21.59cm) overall. 4.5" (11.43cm) sawback stainless blade. Black finger grooved ABS handle. Full tang. Lanyard hole. Black nylon belt sheath. Boxed.



**CN211548BK** Black finish blade..... **Retail \$11.95**



**CN211548GD** Gold TiNi coated stainless blade. ....**Retail \$11.95**

**Combat Boot Knife.** 9" overall. 4.75" black finish double edge stainless dagger blade. Black ABS handle. Lanyard hole. Nylon belt sheath. Boxed.



**CN211459BK** Black sheath..... **Retail \$7.95**



**CN211459CM** Camo sheath. ....**Retail \$7.95**



### Black Canyon Survival Knife.

14" (35.56cm) overall. 8.75" (22.23cm) finish sawback stainless blade. Black metal alloy handle. Steel guard. Lanyard hole. Small survival kit in hollow handle. Compass pommel. Black leather belt sheath. Boxed.



**PA203442SL**  
Satin finish blade.  
.....Retail \$24.95



**PA203442BK** Black finish blade.  
.....Retail \$24.95



**CN211551 Military Survival Knife.** 11" (27.94cm) overall. 6" (15.24cm) black finish sawback stainless tanto blade. Black cord wrapped handle. Lanyard hole. Comes with fire starter. Black nylon belt sheath. Boxed.

.....Retail \$14.95



**CN211490 M9 Military Camo.** 13" overall. 8" gray and black finish stainless sawback clip point blade. Black synthetic handle. Handle features rifle attachment. Green nylon belt sheath with sharpening stone. Boxed.....Retail \$59.95



### CN210668 Military Spear.

10.63" overall. 6" spear point blade. One piece stainless construction with black finish and OD green cord wrapped grip. OD green nylon belt sheath.....Retail \$13.95



**CN210665 Military Hunter.** 11.5" (29.21cm) overall. 7" (17.78cm) black coated stainless bowie blade. OD green cord wrapped handle. Full tang. Lanyard hole. Green nylon belt sheath. Boxed.....Retail \$10.95





**CN210933 M1 Combat Knife.** 14.25" overall. 9.75" black finish stainless blade. Black grooved stainless handle with sheath button release. Black coated stainless guard and pommel. OD green composition belt sheath with black coated stainless fittings. Sheath can attach to military style belts. .... **Retail \$49.95**

**CN211559SA Bowie.** 15" (38.1cm) overall. 10" (25.4cm) black finish sawback stainless bowie blade. Black ABS handle. Stainless guard. Blade etching. Black nylon belt sheath. Boxed.....**Retail \$19.95**



**CN211559YB Bowie.** 15" (38.1cm) overall. 10" (25.4cm) black finish sawback stainless bowie blade. Black ABS handle. Stainless guard. Blade etching. Black nylon belt sheath. Boxed.....**Retail \$19.95**



**CN211554 Toothpick Bowie.** 16.75" (42.55cm) overall. 11.5" (29.21cm) satin finish stainless blade. Black wood handle. Stainless guard and pommel. Lanyard hole. Black nylon belt sheath. Boxed. ....**Retail \$34.95**



**CN211539 Outdoor Beast Knife.** 15" (38.1cm) overall. 10" (25.4cm) satin finish sawback 440 stainless blade. Black ABS handle. Stainless guard. Lanyard hole. Comes with fire starter and sharpener with cord lanyards. Black nylon belt sheath. Boxed. .... **Retail \$33.95**

**CN211514DG****Backyard D-Guard Bowie.**

15" (38.1cm) overall. 10" (25.4cm) black finish 420 stainless clip point blade. Black rubberized ABS handle. D-guard handle. Black nylon belt sheath. Boxed. .... **Retail \$17.95**

**CN211514PL Backyard Bowie.**

15" (38.1cm) overall. 10" (25.4cm) black finish 420 stainless clip point blade. Black rubberized ABS handle. Stainless guard. Lanyard hole. Full tang. Black nylon belt sheath. Boxed. .... **Retail \$17.95**

**CN211515BK Black Tech Bowie.**

15" (38.1cm) overall. 9.5" (24.13cm) black finish 420 stainless clip point blade. Black rubberized ABS handle. Stainless guard. Black nylon belt sheath. Boxed. .... **Retail \$19.95**

**CN211515SL Silver Tech**

**Bowie.** 15" (38.1cm) overall. 9.5" (24.13cm) satin finish 420 stainless clip point blade. Black rubberized ABS handle. Stainless guard. Black nylon belt sheath. Boxed. .... **Retail \$19.95**

**CN211491 Big Bad Bolo Bowie.**

15" overall. 10" satin finish stainless bolo blade. Black rubber handle. Brass guard. Lanyard hole. Inlay shield. Black nylon belt sheath. Boxed. .... **Retail \$20.95**

**CN211184 Guthook Hunter.**

6.75" overall. 2.75" stainless wide bellied guthook blade with hump ridge. Finger grooved black rubberized handle with dual finger rings. Lanyard hole. Embroidered black nylon belt sheath. .... **Retail \$6.95**



**CN210815 Folding Fillet.** 7.25" closed lockback. Stainless flexible fillet blade. Black composition handle with grip ridges. Lanyard hole. .... **Retail \$5.95**



**CN211234BK Fixed Blade.** 7" overall. 3.25" satin finish stainless clip point blade. Black sawcut synthetic handle. Full tang. Lanyard hole. Black nylon belt sheath. Boxed. .... **Retail \$10.95**



**PA8007 Guthook.** 8" overall. 3.75" black finish stainless guthook blade. Full, extended tang with lanyard hole. Brown pakkawood handle. Brown leather belt sheath. ....**Retail \$14.95**



**PA7998 Fixed Blade.** 7.13" overall. 3" satin finish stainless clip point blade. Brown pakkawood handle. Stainless guard. Full tang. Brown leather belt sheath. Boxed.....**Retail \$17.95**



**CN211461 Flag Combat Fighter.**

12.25" overall. 7" blade. Brown stacked leather handle. Stainless guard and pommel. American flag blade artwork. Brown leather belt sheath. Boxed. ....**Retail \$28.95**

**CN211397 Woodsman Bowie.**

15.5" overall. 10" satin finish stainless clip point blade. Brown pakkawood handle. Stainless guard and pommel. Full tang. Black nylon belt sheath. Boxed. ....**Retail \$29.95**



**CN211398 Sawtooth Bowie.** 15" overall. 9.5" satin finish stainless clip point blade. Brown pakkawood handle. Stainless guard and pommel. Full tang. Sawback blade. Black nylon belt sheath. Boxed. ....**Retail \$28.95**



**CN211204SL Gator Bowie.**

16.75" overall. 12.75" stainless sawback bowie blade. Full tang. Brown pakkawood handle with stainless guard. Black nylon belt sheath .....**Retail \$29.95**



**PA7900 Forged Leaf Hunter.** 13" (33.02cm) overall. 7" (17.78cm) forged stainless blade. Brown wood handle. Stainless pommel. Full tang. Brown leather belt sheath. Boxed.....**Retail \$37.95**



**PA8009 Dagger.** 15" overall. 9" stainless dagger blade. Brown wood handle with brass finger guard and pommel. Brown leather belt sheath.....**Retail \$41.95**



**PA7901 Forged Leaf Hunter.**

13.75" (34.93cm) overall. 8.75" (22.23cm) forged steel blade. Brown wood handle. Steel guard and pommel. Brown leather belt sheath. Boxed.....**Retail \$38.95**





**Ulu.**

5.5" (13.97cm) satin finish stainless blade. Full tang. 4.5" handle. Brown leather belt sheath. Boxed.



**PA8026SG** Natural smooth bone handle with stag tips.... **Retail \$43.95**



**PA8026BO** Natural smooth bone handle. .... **Retail \$30.95**

**PA8011BO** Smooth bone handle. .... **Retail \$35.95**

**CN8026HN** Bone and horn handle. .... **Retail \$31.95**

**CN8027** Stag bone handle. .... **Retail \$54.95**

**White Bone Skinners.** Stainless blade. I Standard Edge; **Handle:** White I Bone; **Other Info:** Full Tang. Brass guard. Brown leather belt sheath. Boxed.



**PA8002** 8.25" overall. 4" satin finish drop point blade. .... **Retail \$21.95**



**PA8013** 8.25" overall. 4" mirror polish finish upswept skinner blade. .... **Retail \$19.95**



**PA8014** 7.5" overall. 3.25" mirror polish finish blade. .... **Retail \$19.95**



**CN211389DE Outdoorsman Skinner.**

8" overall. 3.75" satin finish stainless skinner blade. Brown wood handle. Stainless guard. Whitetail deer blade and guard artwork. Full tang. Lanyard hole. Black nylon belt sheath. .... **Retail \$16.95**



**PA8008 Pirate Dagger.** 11" overall. 6" stainless curved design blade. Brown wood handle. Brass guard and pommel. Brown leather belt sheath. Boxed. .... **Retail \$28.95**



**PA8017 Slim Line Skinner.** 6.13" overall. 2.5" satin finish stainless Wharncliffe blade. White smooth bone handle. Stainless bolster(s). Full tang. Brown leather belt sheath. Boxed. .... **Retail \$11.95**



**PA8010 Whitetail Skinner.**

7.88" overall. 3.75" satin finish stainless drop point blade. Full tang. Bone handle with brass finger guard. Brown leather belt sheath. .... **Retail \$23.95**

**PA8015 Fixed Blade.**

7" overall. 3" satin finish stainless skinner blade. White smooth bone handle. Stainless guard. Full tang. Lanyard hole. Brown leather belt sheath. Boxed. .... **Retail \$17.95**



**PA4425 Hunter.** 8.5" overall. 4.25" carbon steel blade. Brown wood handle. Brass pommel. Brown leather belt sheath. Boxed. .... **Retail \$17.95**



**PA4424 Hunter.** 9" overall. 4" carbon steel blade. Brown wood handle. Full tang. Lanyard hole. Brown leather belt sheath. Boxed. .... **Retail \$17.95**

**PA203426 Scimitar Style Hunter.** 12.5" (31.75cm) overall. 6.75" (17.15cm) stainless blade. Brown wood handle. Full tang. Scimitar style blade. Brown leather belt sheath. Boxed. .... **Retail \$25.95**







**CN2112136 Six Piece Fillet Knife Set.** Stainless blade. Blue synthetic handle. Includes one 13.63" fillet knife with 8.25" blade; one 11.5" fillet knife with 6.25" blade; one 10.38" fish scaler with 5 partially serrated blade and scaler on top edge; one 2.75" hand held knife sharpener with blue synthetic housing and two white ceramic sharpening rods; one 8.13" scissors with 3.13" stainless standard and serrated blades and black synthetic handle with bone notch; one 11.25" x 7.63" white synthetic cutting board with carry handle. Black nylon zippered storage case. Bulk packed. .... **Retail \$27.95**



**CN210424BL Diver's Knife.** 9" overall. 4.63" 420 J2 stainless blade with sawback and line cutter. Gray rubberized handle with blue inserts. Molded ABS sheath with rubber arm/leg straps. .... **Retail \$14.95**



**CN210424YW Dive Knife.** 9" (22.86cm) overall. 4.63" (11.76cm) satin finish sawback 420J2 stainless blade. Black rubberized synthetic handle with yellow rubber insert. Belt/cord cutter. Molded ABS sheath with rubber arm/leg straps. Boxed. .... **Retail \$14.95**



**PA203422**



**PA203423**

**Blacksmith Fixed Blade.** 3" (7.62cm) carbon steel blade. Burgundy wood handle. Full tang. Brown leather belt sheath. Boxed.  
**PA203422** 6.25" (15.88cm) overall. .... **Retail \$11.95**  
**PA203423** 6" (15.24cm) overall. Skinner blade. .... **Retail \$11.95**

**CN210964 Highlander Dirk.**

6.75" overall. 3.5" stainless dagger blade. Antique silver finish sculpted handle with cutout design. Black wooden scabbard. .... **Retail \$17.95**



**Boot Knife.**

9.25" overall. 4.75" satin finish stainless dagger blade. Stainless guard. Full tang. Lanyard hole. Brown leather belt sheath. Boxed.



**PA8021BO** Smooth bone handle. .... **Retail \$18.95**



**PA8021HN** Horn handle. .... **Retail \$20.95**



**PA8021WD** Pakkawood handle. .... **Retail \$18.95**

**Gentleman Hunter Bowie.**

10" overall. 5" satin finish stainless clip point blade. Brushed stainless handle. Full tang. Pakkawood handle inlays. Black nylon belt sheath. Boxed.



**CN211396BR** Brown handle inlays. .... **Retail \$21.95**



**CN211396GN** Green handle inlays. .... **Retail \$18.95**



**PA4442 Ring Seax Knife.** 9" (22.86cm) overall. 4" (10.16cm) hammered finish stainless blade. Brown wood handle. Full, extended tang. Finger ring. Brown leather belt sheath. Boxed. .... **Retail \$17.95**



**PA203469 Winter Cabin Hunter.**  
11" (27.94cm) overall. 6" (15.24cm) satin finish stainless blade. Stacked leather handle. Brass guard and pommel. Red and green wood spacers. Brown leather belt sheath. Boxed. .... **Retail \$33.95**



**CN211132 German Fighter.** 12" overall. 6.75" black stainless blade. Stacked leather handle. OD green synthetic belt sheath. .... **Retail \$35.95**



**CN211133 WWII M3 Trench Knife.**  
11.88" overall. 6.63" black coated double edge dagger blade with a partially sharpened top edge. Brown leather wrapped handle. Black coated stainless guard and pommel. OD green composition scabbard with nylon belt loop ..... **Retail \$38.95**

**PA203440 Brownbark Hunter.**  
14.5" (36.83cm) overall. 8.75" (22.23cm) satin finish stainless blade. Brass guard and aluminum pommel. Brown wood and natural smooth bone handle. Brown leather belt sheath. Boxed. .... **Retail \$28.95**



**PA203434 Brass Wire Hunter.** 11.75" (29.85cm) overall. 6.5" (16.51cm) carbon steel blade. Brown wood handle. Full tang. Brass wire wrap on handle. Brown suede belt sheath. Boxed. .... **Retail \$31.95**



**PA8005BR Classic Pro Hunter.**  
9.75" overall. 4.75" mirror polished stainless drop point blade. Black horn handle. Red and black wood spacers. Brass spacer stripes. Grooved brass finger guard and pommel. Brown leather belt sheath. .... **Retail \$27.95**



**PA8004BR Bone Handle Skinner.** 8" overall. 4.13" mirror polished stainless clip point blade with file work. Brown bone handle with brass finger guard and pommel. Brown leather belt sheath. .... **Retail \$23.95**

**CN210451 Black Widow Bowie.**  
13.75" overall. 6" stainless blade. Black composition handle with spider artwork. Gold finish finger guard and pommel. Black nylon belt sheath. .... **Retail \$33.95**



**PA8023HN Fixed Blade.** 8.5" overall. 4" satin finish stainless clip point blade. Buffalo horn handle. Stainless guard. Full tang. Brown leather belt sheath. Boxed. .... **Retail \$18.95**



**PA8022HN Fixed Blade.**  
7.5" overall. 3.25" satin finish stainless guthook blade. Buffalo horn handle. Stainless guard. Finger grooved handle. Full tang. Lanyard hole. Brown leather belt sheath. Boxed. .... **Retail \$19.95**





**PA203445 Skinner.** 7.75" (19.69cm) overall. 3.5" (8.89cm) satin finish stainless blade. Opal pakkawood handle. Brass bolster(s). Full tang. Brown leather belt sheath. Boxed. .... **Retail \$15.95**



**PA203446 Skinner.** 8" (20.32cm) overall. 4.5" (11.43cm) satin finish stainless blade. Green pakkawood handle. Brass bolster(s). Full tang. Brown leather belt sheath. Boxed. .... **Retail \$15.95**



**PA203439 Redtail Hunter.** 8.5" (21.59cm) overall. 4.25" (10.8cm) natural finish stainless blade. Full tang. Brown wood and blue and white resin handle. Brown leather belt sheath. Boxed. .... **Retail \$18.95**



**PA8028 Venison Hunter.** 8.75" (22.23cm) overall. 4.5" (11.43cm) satin finish stainless clip point blade. Full tang. Bone and stag handle with red and black spacers. Brown leather belt sheath. Boxed. .... **Retail \$21.95**



**PA203447 Skinner.** 8" (20.32cm) overall. 4" (10.16cm) satin finish stainless blade. Brown pakkawood handle. Brass bolster(s). Full tang. Brown leather belt sheath. Boxed. .... **Retail \$15.95**

**Redtail Stag.** 9" (22.86cm) overall. Satin finish stainless blade. Red pakkawood handle. Full tang. Stag bolster. Brown leather belt sheath. Boxed.



**PA8035** 4.5" (11.43cm) skinner blade. .... **Retail \$19.95**



**PA8034** 4.75" (12.07cm) blade. .... **Retail \$19.95**

**Silver Stream.** Satin finish stainless clip point blade. Brass guard and aluminum pommel. Brown leather belt sheath. Boxed.



**PA203441 Hunter.** 10" (25.4cm) overall. 5" (12.7cm) blade. Smooth bone, brown and red pakkawood handle. .... **Retail \$18.95**



**PA203450TR Fixed Blade.** 11.5" (29.21cm) overall. 6.5" (16.51cm) blade. White bone and turquoise and black resin handle. .... **Retail \$22.95**



**PA203450RD Fixed Blade.** 11.5" (29.21cm) overall. 6.5" (16.51cm) blade. White bone and brown and red pakkawood handle. .... **Retail \$22.95**

#### Sharpfinger.

7" overall. 3.25" satin finish stainless blade. Full tang. Lanyard hole. Black nylon belt sheath. Boxed.

#### CN211234SG

Staglon handle.

..... **Retail \$10.95**



#### CN211234WD

Pakkawood handle

..... **Retail \$10.95**



**PA203449AM Hunter.** 9.5" (24.13cm) overall. 5" (12.7cm) satin finish stainless blade. Amber pakkawood handle. Brass guard. Full tang. Brown leather belt sheath. Boxed. .... **Retail \$17.95**

#### PA8012 Skinner.

8.25" (20.96cm) overall.

4.25" (10.8cm) satin finish stainless skinner blade.

Brown smooth bone handle. Brass guard. Full tang. Lanyard hole.

Brown leather belt sheath. Boxed. .... **Retail \$23.95**



#### PA8029 Skinner.

8" (20.32cm) overall.

3.75" (9.53cm) satin

finish stainless curved

blade. Natural smooth bone handle. Full tang. Stag bone bolster.

Brown leather belt sheath. Boxed. .... **Retail \$21.95**



**PA7981 Stag Crown Hunter.** 10.25" overall. 4.63" stainless blade with partial sawback. Stag handle with crown stag pommel. Brass finger guard. Brown leather belt sheath. .... **Retail \$69.95**



**PA203438 Whitetail Hunter.** 10.5" (26.67cm) overall. 6" (15.24cm) natural finish stainless blade. Brass guard. Full tang. Brown and blue pakkawood and white resin handle. Brown leather belt sheath. Boxed. .... **Retail \$22.95**



**CN211115 Medieval Feasting Set.** Contains 8.25" overall fork with 2" tines, and 9.25" overall knife with 4.25" sharpened blade. Brown leather belt sheath. Knife and fork are forged stainless construction with twisted handle. Measurements may vary..... **Retail \$35.95**



**PA4409 Forged Twist Karambit.** 7.25" overall. 3.5" blade. Finger ring. One piece hand forged construction with twisted handle. Black leather belt sheath. Boxed..... **Retail \$16.95**



**PA7866 Medieval Twist Feasting Knife.** 7.5" overall. 3.75" blade. Skeletonized handle with twist design. .... **Retail \$11.95**



**PA7867 Medieval Twist Feasting Knife.** 8.25" overall. 4" blade. Skeletonized handle with twist design. .... **Retail \$11.95**



**PA4436 Railroad Style Cleaver.** 9" (22.86cm) overall. 4.25" (10.8cm) carbon steel blade. One-piece construction. Twisted handle. Brown leather belt sheath. Boxed..... **Retail \$27.95**



**PA4435 Railroad Karambit.** 6" (15.24cm) overall. 5" (12.7cm) carbon steel blade. One-piece construction. Twist pattern handle. Brown leather belt sheath. Boxed..... **Retail \$19.95**



**PA4443 Ball Nose Drop Point.** 9" (22.86cm) overall. 4" (10.16cm) hammered finish stainless blade. Black leather wrapped handle. Full, extended tang. Finger ring. Brown leather belt sheath. Boxed..... **Retail \$15.95**



**PA4408 Twisted Railroad Spike Knife.** 9" overall. 4.13" clip point blade. One piece carbon steel construction. Twisted handle with hammer end pommel. Brown leather belt sheath. .... **Retail \$27.95**



**PA4416 Railroad Spike Cleaver.** 9" overall. 4.5" blade. Made from a railroad spike. Twisted handle. Brown leather belt sheath. Boxed. .... **Retail \$38.95**



**PA4414 Railroad Spike Dagger.** 11" overall. 5.5" double edge blade. Made from a railroad spike. Twisted handle. Brown leather belt sheath. Boxed..... **Retail \$29.95**



**PA4415 Railroad Spike Fixed Blade.** 12" overall. 6.5" blade. Made from a railroad spike. Twisted handle. Brown leather belt sheath. Boxed. .... **Retail \$29.95**



**PA4434 Railroad Dagger.** 11.25" (28.58cm) overall. 6.5" (16.51cm) carbon steel blade. One-piece construction. Twist pattern handle. Brown leather belt sheath. Boxed..... **Retail \$23.95**



**PA4433 Railroad Arrow Tip Dagger.** 10" (25.4cm) overall. 6" (15.24cm) carbon steel blade. One-piece construction. Twist pattern handle. Brown leather belt sheath. Boxed. .... **Retail \$25.95**





**CN2108446 Six Function Camp Tool.**  
4.25" closed. All stainless construction.  
Features knife blade, bottle opener,  
corkscrew, reamer, fork and spoon.  
Keyring. Handles are detachable.  
..... **Retail \$5.95**



**CN2108444 Four Function Camp Tool.**  
3.5" closed. All stainless construction.  
Features knife blade, bottle opener,  
fork and spoon. Keyring. Handles  
are detachable..... **Retail \$4.95**



apart

apart

**CN211528 American Wolf Dagger.** 13.25" (33.66cm)  
overall. 8" (20.32cm) satin finish 420 stainless blade.  
Plastic handle. Wolf shaped pommel. Wolf artwork on  
handle and sheath. Plastic sheath. Boxed. .... **Retail \$13.95**



**CN211560 Fillet Knife.** 12.25" (31.12cm) overall. 7.5" (19.05cm)  
satin finish stainless fillet blade. Imitation stag handle. Brass bolster(s). Full  
tang. Brown leather belt sheath. Boxed..... **Retail \$20.95**



**CN211185 Utility Multi-Tool Assortment.**  
2.25" closed. Stainless components including  
medium flathead screwdriver, Phillips screwdriver,  
1.38" standard edge knife blade and bottle  
opener with small flathead screwdriver tip.  
Anodized aluminum handle with white LED.  
Lanyard hole with stainless lanyard ring  
and keyring. Includes twelve multi-tools in colorful  
cardboard display box. Mixed colors including  
blue, red, silver and black. .... **Retail \$56.95**

For more Rite Edge items see:

- » Razors; Grooming
- » Sheaths
- » Tools

Please refer to the index for specific  
page numbers.



Made in Italy

**RYP**  
**DESIGN**  
Robert Young Pelton

items enlarged  
to show detail



**RPDMF001 RYP Harsey Demo Folder.** 4.88" (12.4cm) closed. 3.88" (9.86cm) stonewash finish Bohler M390 stainless blade. Gray textured titanium handle. Extended tang. Thumb pull. Glass breaker. Lanyard hole. Pocket clip. Blade etching. Custom IKBS pivot system. Integrated awl/spike. Comes with replaceable flat head screw. Billy Waugh Special edition. Designed by Robert Young Pelton and William W. Harsey. Boxed..... **Retail \$468.95**



**RBPWF001 Billy Waugh Demo Framelock.**  
5.25" (13.34cm) closed. 3.88" (9.86cm) black PVD coated Bohler M390 stainless blade.  
3D machined titanium handle. Glass breaker. Extended tang. Lanyard hole. Thumb pull.  
Pocket clip. Custom IKBS pivot system. Awl/spike. Comes with replaceable flat  
head screw. Robert Young Pelton and William Harsey Jr collaboration. Boxed.  
..... **Retail \$499.95**

**Skinner.**

Mirror finish stainless skinner blade.  
Stag handle with Kingman turquoise inlay.  
Brass guard. Brown leather belt sheath.  
Boxed.



shown with sheath

**RUDHB1 Skinner.** 9.75" (24.77cm) overall. 4.25" (10.8cm) blade. Deer stag.  
..... **Retail \$172.95**

**Damascus Skinner.**

Damascus steel skinner blade. Stag handle with Kingman turquoise inlay.  
Brass guard. Brown leather belt sheath. Boxed.

shown with sheath



**RUDHDMB1**  
9" (22.86cm) overall. 4" (10.16cm)  
blade. Deer stag. .... **Retail \$149.95**



**RUEKB4 Skinner.**  
11.5" (29.21cm) overall. 5" (12.7cm) blade.  
Elk stag. .... **Retail \$191.95**



**RUEKDMB4**  
11.5" (29.21cm) overall.  
5" (12.7cm) blade. Elk stag.  
..... **Retail \$227.95**



**RUEKDMB3** 13" (33.02cm) overall.  
6.5" (16.51cm) blade. Elk stag.  
..... **Retail \$159.95**

**Guthook.**

Guthook blade. Stag handle. Brass guard. Kingman turquoise handle inlay. Brown leather belt sheath. Boxed.



**RUDHDMB2** 9.5" (24.13cm) overall. 4.5" (11.43cm) Damascus steel blade.  
Deer stag. .... **Retail \$191.95**



**RUEKDMBL2** 10.5" (26.67cm) overall. 4.5" (11.43cm) Damascus steel blade.  
Elk stag. .... **Retail \$149.95**



**RUEKB3 Hunter.**  
12" (30.48cm) overall. 6.5" (16.51cm) mirror finish  
stainless clip point blade. Elk stag handle with  
Kingman turquoise inlay. Brass guard. Brown leather  
belt sheath. Boxed. .... **Retail \$173.95**



**Double Action Lockback.** 4.13" closed. Satin finish 1065 carbon steel clip and spey blades. Nickel silver bolster(s). Inlay shield. Boxed.



**RP0004CRB** Red jugged bone handle. .... **Retail \$33.95**



**RP0004CBB** Coffee Brown jugged bone handle. .... **Retail \$33.95**

**RP0004CWB** White smooth bone handle. .... **Retail \$33.95**



**RP0037ZW Junior Outlaw Linerlock.** 4.13" closed. 3" satin finish 8Cr13MoV stainless blade. Zebra wood handle. Extended tang. Lanyard hole. Pocket clip. Ball bearing pivot system. Boxed. .... **Retail \$39.95**



**RP0035ZW Outlaw Linerlock.** 4.38" closed. 3.25" satin finish partially serrated D2 tool steel drop point blade. Zebra wood handle. Extended tang. Lanyard hole. Pocket clip. Boxed. .... **Retail \$53.95**



**RP040 Deadwood Skinner II.** 7.5" (19.05cm) overall. 3.5" (8.89cm) satin finish 8Cr13MoV stainless blade. Full, extended tang. Lanyard hole. Guibourtie Erie hardwood handle. Black leather belt sheath. Boxed. .... **Retail \$43.95**



**Razor Fixed Blade.** 7" (17.78cm) overall. 3" (7.62cm) satin finish 1065 carbon steel blade. G10 handle. Full tang. Lanyard hole. Black leather belt sheath. Boxed.



**RP023G** Green handle. .... **Retail \$53.95**



**RP023H** Orange handle. .... **Retail \$53.95**

## ROPER KNIVES

*There is a little COWBOY in all of us.*



**RP0001XGB Stockman.** 4" (10.16cm) closed. Clip, sheepfoot, and spey blades. Inlay shield. .... **Retail \$53.95**



**RP0002XGB Trapper.** 4.13" (10.49cm) closed. Clip and spey blades. .... **Retail \$53.95**



**RP0010S Flash Lockback.** 4" (10.16cm) closed. 3" (7.62cm) satin finish serrated 8Cr13MoV stainless blade. Brushed stainless handle. Thumb pull. Lanyard hole. Pocket clip. Boxed. .... **Retail \$25.95**



**RP0037SS Deputy Framelock.** 4.13" closed. 3" satin finish stainless blade. Brushed stainless handle. Inlay shield. Lanyard hole. Extended tang. Pocket clip. Boxed. .... **Retail \$33.95**



**RP0037D Maverick Framelock.** 4.25" (10.8cm) closed. 3.25" (8.26cm) Damascus steel blade. Bead blast finish stainless handle. Extended tang. Lanyard hole. Pocket clip. Boxed. .... **Retail \$83.95**

**Buffalo Linerlock.** Satin finish D2 tool steel blade. Sandalwood handle. Brass bolster(s). Ball bearing pivot system. Lanyard hole. Boxed.



**RP041 Warrior.** 4.75" (12.07cm) closed. 3.75" (9.53cm) blade. .... **Retail \$59.95**



**RP042 Scout.** 4" (10.16cm) closed. 3.25" (8.26cm) blade. .... **Retail \$53.95**



shown  
in sheath

**RP0028ZW Deadwood Jr Fixed Blade.** 6.5" (16.51cm) overall. 3.5" (8.89cm) satin finish 8Cr13MoV stainless blade. Zebra wood handle. Aluminum guard and pommel. Brown leather belt sheath. Boxed. .... **Retail \$43.95**



# ROPER KNIVES

*There is a little COWBOY in all of us.*



**RP0032WB Mini Work Knife Lockback.** 3.75" (9.53cm) closed. Satin finish 1065 carbon steel blade(s). White smooth bone handle. Boxed. **Retail \$25.95**

**Pecos Series.** Satin finish 1065 carbon steel blade(s). Yellow smooth Delrin handle. Stainless bolster(s). Inlay shield. Boxed.



**RP0032YD Tumble Weed Lockback.** 3.5" (8.89cm) closed. 2.5" (6.35cm) blade. .... **Retail \$25.95**



**RP0011 Linerlock.** 4" closed. 3" clip point blade. .... **Retail \$25.95**



**RP0008CYD Medium Trapper.** 3.5" (8.89cm) closed. Clip and spey blades. .... **Retail \$25.95**



**RP0001CYD Medium Stockman.** 3.5" (8.89cm) closed. Clip, sheepfoot, and spey blades. .... **Retail \$25.95**



**RP0001CBB Stockman.** 3.5" (8.89cm) closed. Satin finish 1065 carbon steel clip, sheepfoot, and spey blades. Brown jugged bone handle. Nickel silver bolster(s). Inlay shield. Boxed. .... **Retail \$25.95**

**Jugged Black Bone.** 3.5" closed. 1065 Carbon steel blades. Black jugged bone handle. Inlay shield. Boxed.



**RP0008CBK Trapper.** Clip and spey blades. Nickel silver bolster(s). .... **Retail \$25.95**



**RP0001CBK Stockman.** Clip, spey, and sheepfoot blades. Satin stainless bolsters. .... **Retail \$25.95**

## Southwest Series.

3.88" (9.86cm) closed. Satin finish 1065 carbon steel blade(s). Acrylic handle with Southwest artwork. Nickel silver bolster(s). Boxed.



**RP0001WS1 Stockman.** 3.88" (9.86cm) closed. Clip, sheepfoot, and spey blades. .... **Retail \$31.95**



**RP0002WS1 Trapper.** 4.13" (10.49cm) closed. Clip and spey blades. **Retail \$31.95**



**RP0032WS1 Pecos Tumble Weed Lockback.** 3.5" (8.89cm) closed. 2.5" (6.35cm) blade. .... **Retail \$29.95**

**Pit Viper.** 1065 carbon steel blades. Brown bone pitted handle. Inlay shield. Nickel silver bolsters. Boxed.

**RP0002CPV Trapper.** 4.13" closed. Clip and spey blades. .... **Retail \$31.95**



**RP0001CPV Stockman.** 3.5" closed. Clip, spey, and sheepfoot blades. .... **Retail \$31.95**



**Laredo Series.** Satin finish 1065 carbon steel blades. Nickel silver bolster(s). Inlay shield. Brown wood and bone handle. Boxed.



**RP0001SG Stockman.** 3.88" closed. Clip, sheepfoot, and spey blades. .... **Retail \$31.95**



**RP0002SG Trapper.** 4.13" closed. Clip and spey blades. .... **Retail \$31.95**

**RP0098ZWD Trapper.** 4.13" closed. Satin finish 1065 carbon steel clip, saw, and guthook blades. Zebra wood handle. Stainless bolster(s). Boxed. .... **Retail \$31.95**





### Mini Trapper.

3.5" (8.89cm) closed. Satin finish 1065 carbon steel clip and spey blades. Nickel silver bolster(s). Inlay shield. Boxed.

#### RP0008CBB

Brown jugged bone handle.  
..... Retail \$25.95



**RP0008CRB** Red jugged bone handle.  
..... Retail \$25.95

### RP0001CRB Chaparral Series Stockman.

3.5" closed. Satin finish 1065 carbon steel clip, sheepfoot, and spey blades. Red jugged bone handle. Nickel silver bolster(s). Inlay shield. Boxed. .... Retail \$25.95



**RP0006P** Pink Sky Peanut. 2.75" closed. 1065 carbon steel clip and spey blades. Pink bone handle. Inlay shield. Stainless bolsters. Boxed. .... Retail \$21.95



### Green Bone Carbon.

3.5" closed. Satin finish 1065 carbon steel blades. Green jugged bone handle. Stainless bolster(s). Inlay shield. Boxed.

**RP0008CGB** Trapper.  
Clip and spey blades.  
..... Retail \$25.95



**RP0001CGB** Stockman.  
Clip, sheepfoot, and spey blades. .... Retail \$25.95



**Tombstone Series.** Damascus steel blade(s). Red jugged bone handle. Stainless bolster(s). Inlay shield. Boxed.



**RP0001DRB** Stockman.  
4" (10.16cm) closed. Clip, sheepfoot, and spey blades. .... Retail \$83.95



**RP0002DRB** Trapper.  
4.13" (10.49cm) closed. Clip and spey blades. .... Retail \$83.95

### Klondike Lockback.

3.75" (9.53cm) closed. Satin finish D2 tool steel blade. Brown checkered wood handle. Stainless bolster(s). Inlay shield. Boxed.



**RP0038** Coping blade.  
..... Retail \$35.95

**RP0039** Hawkbill blade. .... Retail \$35.95



## ROPER KNIVES

*There is a little COWBOY in all of us.*

### Tobacco Bond Series.

Satin finish 1065 carbon blades. Brown jugged bone handle. Nickel silver bolster(s). Inlay shield. Boxed.



**RP0002CTB** Trapper.  
4.13" closed. Clip and spey blades. .... Retail \$31.95



**RP0001CTB** Stockman.  
3.88" closed. Clip, spey, and sheepfoot blades. .... Retail \$31.95

### Rattler Series.

Satin finish 1065 carbon steel blade(s). Micarta handle. Stainless bolster(s). Inlay shield. Boxed.



**RP0001CMG** Stockman.  
4" (10.16cm) closed. Clip, sheepfoot, and spey blades. Black and green handle. .... Retail \$31.95



**RP0001CMT** Stockman.  
4" (10.16cm) closed. Clip, sheepfoot, and spey blades. Black and tan handle. .... Retail \$31.95



**RP0007CMG** Muskrat.  
4.5" (11.43cm) closed. Twin clip blades. Black and green handle. .... Retail \$31.95



**RP0007CMT** Muskrat.  
4.5" (11.43cm) closed. Twin clip blades. Black and tan handle. .... Retail \$31.95



**RP0002CMG** Trapper.  
4.13" (10.49cm) closed. Clip and spey blades. Green handle. .... Retail \$31.95



**RP0002CMT** Trapper.  
4.13" (10.49cm) closed. Clip and spey blades. Black and tan handle. .... Retail \$31.95

# ROUGH RYDER



**RR135 Lockback.** 3.63" closed. Stainless drop point blade. White smooth bone handle with nickel silver bolster. .... **Retail \$16.95**



**RR221 Lockback.** 3" closed. Stainless clip blade. Brushed stainless handle. Lanyard hole. .... **Retail \$5.95**



**RR998 Stainless Lockback.** 3.38" closed. 2.63" 440 stainless clip blade. Brushed stainless handle with Lanyard hole. Stainless pocket clip. .... **Retail \$8.95**



**RR746 Lockback.** 3.5" closed. Stainless clip point blade. Stainless handle. Front handle has scroll work design. Lanyard hole. Stainless pocket clip. .... **Retail \$10.95**



**RR1339 Pinto II.** 2.88" closed lockback. 2.13" stainless clip blade. Nickel silver bolsters. White smooth bone handle. .... **Retail \$13.95**



**RR461 Lockback.** 3.13" closed. 440 stainless drop point blade. Amber jugged bone handle. Grooved nickel silver bolster. Inlay shield. .... **Retail \$12.95**



**RR020 Lockback.** 3.63" closed. 2.63" 440 stainless drop point blade. White smooth bone handle with grooved nickel silver bolster. .... **Retail \$16.95**



**RR137 Small Lockback.** 3" closed. Stainless drop point blade. White smooth bone handle. No shield. .... **Retail \$14.95**

## Wild West Mustangs Series.

The Mustang is a feral horse - wild and free - a descendant of runaway Spanish stock. They are small and strong, and they have survived for hundreds of years in the Southwest. Just like their namesake, the Rough Rider Wild West Mustang is small, strong, and built to last.



**RR1296 Little Mustang Lockback.** 2.13" closed. 1.5" 440 stainless blade. White smooth bone handle. Grooved nickel silver bolster. No shield. .... **Retail \$11.95**



**RR1300 Mustang Lockback.** 2.5" closed. 1.88" 440 stainless blade. White smooth bone handle. Grooved nickel silver bolster. No shield. .... **Retail \$11.95**

## RR139 Baby Sunfish.

3" closed. Stainless spear and pen blades. White smooth bone handle. Nickel silver bolsters and inlay shield. .... **Retail \$25.95**



## Lockback.

3.75" closed. Stainless clip point blade. Nickel silver bolsters. Inlay shield.



**RR192** White smooth bone handle. No shield. .... **Retail \$18.95**



**RR193** Amber jugged bone handle. .... **Retail \$18.95**



**RR081** Amber jugged bone handle. .... **Retail \$17.95**



**RR133** White smooth bone handle. .... **Retail \$17.95**

**Black & Blue.** Satin finish VG-10 stainless blade. Black and blue aluminum handle. Boxed.



**RR2201 Lockback.** 3.5" (8.89cm) closed. 2.5" (6.35cm) clip point blade. .... **Retail \$21.95**



**RR2202 Folder.** 3.88" (9.86cm) closed. 2.88" (7.32cm) Wharncliffe blade. .... **Retail \$21.95**



**RR182 Lockback.** 4" closed. Matte finish stainless blade. Laminated rich grain wood handle with laser engraved stainless bolster. .... **Retail \$13.95**



**RR763 One Arm Lockback.** 3.88" closed. 440 stainless razor blade. Amber jugged bone handle. Grooved nickel silver bolster and inlay shield. .... **Retail \$17.95**



**RR2099 Highland Lockback.** 4" (10.16cm) closed. 3" (7.62cm) satin finish stainless clip point blade. Black micarta handle. Stainless bolster(s). Lanyard hole. Boxed. .... **Retail \$13.95**



**RR2044 Pocket Cleaver Lockback.** 5" (12.7cm) closed. 3.5" (8.89cm) mirror finish stainless cleaver style blade. Black G10 handle. Nickel silver bolster(s). Lanyard hole. Boxed. .... **Retail \$23.95**





**RR1708 Blackwood Lockback.** 4" closed. 3" satin finish stainless blade. Blackwood handle. Lanyard hole. Boxed. .... **Retail \$11.95**



**RR1472 Lockback.** 4" closed. 3" stainless blade with nail nick. Black aluminum handle with lanyard hole. .... **Retail \$7.95**



**RR1326 Swing Guard Lockback.** 3.5" closed. 2.5" 440A stainless clip point blade. Tobacco smooth bone handle. Nickel silver grooved bolsters, swing guard, and inlay shield. .... **Retail \$19.95**



**RR518 Finger Grooved Lockback.** 3.38" closed. 440 stainless clip blade. Light brown wood handle with polished nickel silver bolster and lanyard hole. .... **Retail \$15.95**



#### Copperhead.

3.75" (9.53cm) closed. Mirror finish stainless clip and pen blades. Nickel silver bolster(s). Inlay shield. Boxed.



**RR2289** Amber jugged bone handle. .... **Retail \$20.95**



**RR043** Amber jugged bone handle. .... **Retail \$19.95**



**RR2288** Blue smooth bone handle. .... **Retail \$20.95**



**RR2290** White smooth bone handle. .... **Retail \$20.95**

**RR127 Muskrat.** 4" closed. Stainless twin clip blades. White smooth bone handle. Nickel silver bolsters. No shield. .... **Retail \$19.95**



## ROUGH RYDER



**RR2178 Lockback.** 3.5" (8.89cm) closed. 2.5" (6.35cm) satin finish stainless blade. Black G10 handle. Boxed. .... **Retail \$7.95**



**RR854 Folding Hunter.** 5.25" closed linerlock. Stainless clip blade. Amber jugged bone handle with nickel silver bolsters and inlay shield. .... **Retail \$25.95**

#### Tiny Copperhead.

2" closed. Stainless clip and skinning blades. Nickel silver bolsters.



**RR186** Amber jugged bone handle... **Retail \$6.95**



**RR293** Red jugged bone handle. .... **Retail \$6.95**



**RR187** Mother of pearl handle. .... **Retail \$13.95**

**Lockback Trapper.** 3.88" closed. 440 stainless clip and spey blades. Grooved nickel silver bolsters and inlay shield.



**RR1070** Smooth tobacco bone handle. .... **Retail \$21.95**



**RR1069** Amber jugged bone handle..... **Retail \$21.95**



**RR204 French Tickler.** 4.13" closed lockback. 440 stainless blade. Amber jugged bone handle with grooved brass bolsters and inlay shield. .... **Retail \$17.95**

#### Folding Hunter.

5" closed lockback. Stainless clip blade. Nickel silver bolsters and inlay shield. Black nylon belt sheath.



**RR066** Amber jugged bone handle..... **Retail \$27.95**



**RR067** Smooth bone handle. No shield. .... **Retail \$27.95**

# ROUGH RYDER

**RR1907 Sowbelly Trapper.** 3.75" closed.  
Mirror finish stainless clip and spey blades.  
Stag bone handle. Nickel silver bolster(s).  
Inlay shield. Boxed. .... **Retail \$24.95**



**RR1401 Fish Knife.**  
5" closed. 440 stainless clip blade and scaler with hook disgorger and bottle opener. Red jigged bone handle with nickel silver bolsters and inlay shield.  
..... **Retail \$19.95**

**Stockman.**  
3.5" closed. Stainless clip, spey and  
sheepsfoot blades. Nickel silver bolsters  
and inlay shield.

**RR158** Stag bone handle.  
..... **Retail \$19.95**



**RR438** Amber jigged  
bone handle. .... **Retail \$18.95**



**RR005** Orange smooth  
bone handle. .... **Retail \$18.95**

**RR1509 Trapper.**  
4" closed. Mirror polish finish stainless clip and spey  
blades blade. Ram's horn jigged bone handle. Inlay  
shield. Nickel silver bolsters. Boxed. .... **Retail \$23.95**



**RR1447 Minute Man Trapper.**  
4.13" closed. Stainless clip and  
spey blades. White smooth  
bone handle with Minute Man  
Second Amendment artwork  
and nickel silver bolsters.  
Main blade has Defend the  
Second Amendment eagle etch.  
..... **Retail \$20.95**

detail



**RR533 Camp Knife.** 3.75" closed.  
440 stainless spear blade, small blade, pick,  
and can opener with large screwdriver tip.  
Amber jigged bone handle. Nickel silver  
bolsters and inlay shield. Bail.  
..... **Retail \$24.95**



**RR1185 Dog Bone Jack.** 3.75" closed.  
Stainless spear and spey blades. Master  
blade etched Dog Bone Jack. Brown sawcut  
bone handle with grooved nickel silver  
bolsters and Dog Bone inlay shield. Leather  
lanyard with whistle. Black leather slip  
pouch with stainless Pocket clip.  
..... **Retail \$27.95**

## Smooth Cherry Bone Series.

Stainless blade(s). Black Cherry smooth bone handle. Nickel silver bolster(s).  
Blade etching. Boxed.



**RR1668** Small Toothpick.  
3" closed. Long clip blade.  
..... **Retail \$13.95**



**RR1661** Lockback.  
3" closed. Spear and spey blades.  
..... **Retail \$13.95**

## Red Jigged Bone Series.

440 stainless blade. Red jigged bone handle. Nickel silver bolster(s).  
Inlay shield. Boxed.



**RR1291 Mini Scout.** 2.25" closed.  
Tools include: Can opener |  
Bottle opener | Screwdriver tip.  
..... **Retail \$13.95**



**RR271 Mini Canoe.**  
2.75" (6.99cm) closed. Spear and  
pen blades. .... **Retail \$12.95**

## Mini Muskrat.

2" closed. 440 stainless dual clip blades. Nickel silver bolster(s). Boxed.

**RR841** Pink smooth bone handle.  
..... **Retail \$7.95**



**RR183** Amber jigged bone handle. .... **Retail \$7.95**



### Trapper.

4.13" closed. 440 stainless clip and spey blades. Nickel silver bolsters and inlay shield.



**RR1406** Brown Appaloosa bone handle. Appaloosa blade etching..... **Retail \$20.95**



**RR1405** Red Appaloosa bone handle. Appaloosa blade etching..... **Retail \$20.95**



**RR1531** Crackle Stone handle. .... **Retail \$17.95**



**RR1498** Strawberry sawcut bone handle. .... **Retail \$19.95**



**RR1947** Navy smooth bone handle. .... **Retail \$17.95**

### Don't Tread on Me Series.

The roots of the coiled rattlesnake "Don't Tread On Me" flag date back to the early days of the American Revolution. Attributed to South Carolina statesmen Charles Gadsden, it was used by infantry regiments. Today it remains an American symbol of freedom and tenacity in the face of oppression. Knives feature 440A stainless blades and yellow smooth bone handle. Front handle is etched "Don't Tread on Me" with coiled snake image. Nickel silver bolsters.



**RR1381** Trapper. 4.13" closed. Clip and spey blades. .... **Retail \$20.95**



**RR1390** Stockman. 3.88" closed. Clip, spey and sheepfoot blades. . **Retail \$19.95**



**RR1129**



**RR1131**

### TrapperLock.

4.13" closed linerlock. 3.13" 440 stainless clip blade with thumb lug. Grooved nickel silver bolsters and inlay shield.

**RR1129** Brown jugged bone handle. .... **Retail \$17.95**

**RR1131** Smooth Tobacco bone handle. Acorn shield..... **Retail \$17.95**

### Tiny Trapper.

2" closed. Stainless clip and spey blades. Nickel silver bolsters.



**RR804** Smooth yellow synthetic handle. .... **Retail \$5.95**



**RR805** Imitation tortoise shell handle. .... **Retail \$5.95**



**RR807** Amber jugged bone handle. .... **Retail \$6.95**



**RR839** Pink smooth bone handle. .... **Retail \$6.95**



**RR1262** White smooth bone handle. .... **Retail \$6.95**



**RR1263** Turquoise smooth bone handle. .... **Retail \$6.95**



**RR1265** Purple smooth bone handle. .... **Retail \$6.95**

### RR100 Mini Trapper.

3.5" closed. Stainless clip and spey blades. White smooth bone handle. Nickel silver bolsters. ... **Retail \$18.95**



### RR1776 America Trapper.

4.13" (10.49cm) closed. Stainless clip and spey blades. Natural bone handle. Nickel silver bolster(s). Blade etching. American flag and eagle handle artwork. Boxed. .... **Retail \$29.95**



closed



### RR2316 Teddy Roosevelt Large Trapper.

8" (20.32cm) closed. Mirror finish stainless clip and spey blades. Red pakkawood handle. Nickel silver bolster(s). Blade etching. Inlay shield. Boxed. .... **Retail \$59.95**



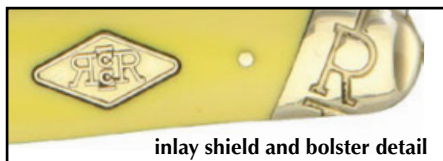
# ROUGH RYDER

## Yellow Smooth Synthetic Handle Series.

Mirror finish carbon steel blade(s). Yellow smooth synthetic handle.  
Nickel silver bolster(s). Inlay shield. Boxed.

**RR1732 Doctor's Knife.**  
3.63" closed. Spear blade.

..... Retail \$16.95



inlay shield and bolster detail

**RR1731 Trapper.**  
4.13" closed. Clip and  
spey blade(s)..... Retail \$18.95



**RR1736 Canoe.**  
3.63" closed.  
Spear and pen blades.  
..... Retail \$17.95



**RR1738 Lockback.**  
3.75" closed. 2.75" clip  
point blade. .... Retail \$19.95



**RR1744 Toothpick.**  
4" closed. Long clip blade.  
..... Retail \$16.95



**RR1741 Sway Back.**  
3.75" closed. Pen, Wharncliffe, and  
spear blades. .... Retail \$23.95



**RR1735 Trapper Lockback.**  
4.13" closed. Clip and spey blades.  
..... Retail \$21.95



**RR1733 Sowbelly.** 3.75" closed.  
Clip, sheepfoot, and spey blades.  
..... Retail \$18.95

**RR1734 Hawkbill.** 4" closed.  
Hawkbill blade. .... Retail \$17.95



**RR1740 Stockman.**  
4.25" closed. Clip, sheepfoot, and  
spey blades..... Retail \$20.95



**RR1742 Folding Hunter.**  
5.25" closed. Clip  
and skinner blades.  
..... Retail \$24.95



**RR1743 Work Knife.** 4.63" closed.  
..... Retail \$19.95



**RR2040 Barlow.** 3.38" (8.59cm) closed.  
Clip and pen blades..... Retail \$21.95



## Whittler.

3.5" closed. Stainless clip, short clip and  
pen blades. Nickel silver bolsters and  
inlay shield.



**RR106** Amber jugged bone handle.  
..... Retail \$19.95



**RR282** Red jugged bone handle.  
..... Retail \$19.95



**RR155** Stag bone handle.  
..... Retail \$19.95



**Razor Trapper.** 4.13" closed. Stainless clip and razor blades. Nickel silver bolsters and inlay shield.



**RR072** Amber jugged bone handle. .... **Retail \$19.95**



**RR073** Orange smooth bone handle. .... **Retail \$19.95**



**RR274** Red jugged bone handle. .... **Retail \$19.95**



**RR515** Imitation tortoise shell handle..... **Retail \$17.95**



**RR892** Smooth yellow synthetic handle. ... **Retail \$17.95**



**RR818 Work Knife.** 3.5" closed. 440 stainless drop point blade. Yellow smooth synthetic handle. Inlay shield. Boxed. .... **Retail \$16.95**



**RR375 Whittler.** 3.25" closed. 440 stainless spear, pen and coping blades. Amber jugged bone handle. Grooved nickel silver bolsters..... **Retail \$19.95**



**RR1596 Small Folder.** 3.25" closed. Stainless clip and spey blades with mirror polish finish. Brown ram's horn handle. Nickel silver bolsters and inlay shield. Boxed. .... **Retail \$18.95**



**RR080 Sowbelly Stockman.** 3.75" closed. Stainless clip, spey and sheepsfoot blades. Amber jugged bone handle. Nickel silver bolsters and inlay shield. .... **Retail \$19.95**

#### Mini White Bone Series.

2.25" (5.72cm) closed. Mirror finish stainless blades. White smooth bone handle. Nickel silver bolster(s). Keyring. Boxed.



**RR2460 Mini Stockman.** Clip, sheepsfoot, and spey blades. .... **Retail \$8.95**



**RR2459 Mini Trapper.** Clip and spey blades. .... **Retail \$9.95**



**RR2462 Mini Muskrat.** Dual clip blades. ... **Retail \$9.95**

## ROUGH RYDER

Mother of pearl and abalone handle may have natural flaws and imperfections.



**RR930**



**RR931**



**RR1255**



**RR1257**

**Tiny Congress.** 2" closed. 440 stainless twin sheepsfoot, pen and coping blades. Nickel silver bolsters.

<b>RR930</b> Amber jugged bone handle. ....	<b>Retail \$6.95</b>
<b>RR931</b> Smooth tobacco bone handle. ....	<b>Retail \$6.95</b>
<b>RR1255</b> Pink smooth bone handle. ....	<b>Retail \$6.95</b>
<b>RR1257</b> Turquoise smooth bone handle. ....	<b>Retail \$6.95</b>



**RR1256**



**RR1259**

**Mini Four Blade Whittler.** 2" closed. Two sheepsfoot, pen and coping blades. Nickel silver bolsters.

<b>RR1256</b> White smooth bone handle. ....	<b>Retail \$6.95</b>
<b>RR1259</b> Purple smooth bone handle. ....	<b>Retail \$6.95</b>



**RR2257 Bow Trapper.** 4" (10.16cm) closed. Satin finish stainless clip blade. Red G10 handle. Inlay shield. Lanyard hole. Black liners. Boxed. .... **Retail \$17.95**

**Large Bow Trapper.** 4.25" (10.8cm) closed. Satin finish stainless clip blade. Synthetic handle. Stainless bolster(s). Inlay shield. Lanyard hole. Boxed.



**RR2455** Red handle. .... **Retail \$19.95**



**RR2456** Black handle. .... **Retail \$19.95**

**RR1552 Mini Trapper Keychain.** 2" (5.08cm) closed. Mirror finish stainless clip and spey blades. Pink synthetic handle. Nickel silver bolster(s). Keyring. Boxed. .... **Retail \$7.95**



# ROUGH RYDER

## RR1273 Small Barlow.

2.88" closed. 2" 440 stainless clip blade. White smooth bone handle with grooved nickel silver bolster. Bolster is stamped with Rough Rider horseshoe logo. .... **Retail \$11.95**



**Barlow.** 3.38" closed. Stainless clip and pen blades. Nickel silver bolster and inlay shield.



**RR198** White smooth bone handle. No shield. .... **Retail \$18.95**



**RR201** Amber jugged bone handle. .... **Retail \$18.95**

## Miniature Folder.

1" closed. Stainless clip point blade. Nickel silver bolsters with loop for necklace or keyring.



**RR164**



**RR168**



**RR172**

Enlargements to show detail.

**RR164** White smooth bone handle. .... **Retail \$6.95**

**RR168** Mother of pearl handle. .... **Retail \$6.95**

**RR172** Abalone handle. .... **Retail \$11.95**



**RR166**



**RR174**



Enlargements to show detail.

**Miniature Folder.** 1.13" closed. Stainless clip point blade. Nickel silver bolsters with loop for necklace or keyring.

**RR166** White smooth bone handle. .... **Retail \$9.95**

**RR174** Abalone handle. .... **Retail \$12.95**



**RR167**



**RR175**



Enlargements to show detail.

**Miniature Folder.** 1.63" closed. Stainless clip point blade. Nickel silver bolsters with loop for necklace or keyring.

**RR167** White smooth bone handle. .... **Retail \$7.95**

**RR175** Abalone handle. .... **Retail \$17.95**



## RR2195 Miniature Folder.

1.25" (3.18cm) closed. Mirror finish stainless blade. Mother of pearl handle. Nickel silver bolster(s). Keyring. Boxed. .... **Retail \$9.95**

**RR162**



**RR163**



Enlargements to show detail.

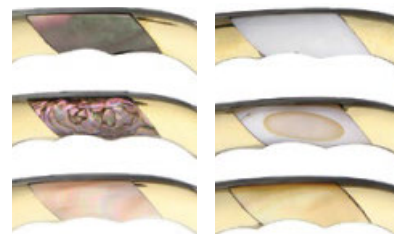
## Miniature Folder.

1" closed. Clip point blade. Handles etched Rough Rider with loop for necklace or keyring.

**RR162** Stainless blade and handle. .... **Retail \$3.95**

**RR163** Brass finish blade and handle. .... **Retail \$3.95**

Enlargements to show detail.



**RR1710 Miniature Knife Set.** 1.5" closed. 1.13" mirror polish finish clip blade. Nickel silver bolster(s). Set of six. Keyring. Abalone and Mother of Pearl handle. Boxed. .... **Retail \$59.95**

Mother of pearl and abalone handle may have natural flaws and imperfections.



**RR1361**



**RR1362**



**RR1363**

**Mini Razor.** 2" closed. 1" stainless razor blade. Nickel silver bolsters.

**RR1361** Pink smooth bone handle. .... **Retail \$6.95**

**RR1362** Smooth yellow synthetic handle. No shield. .... **Retail \$5.95**

**RR1363** White pearl handle. .... **Retail \$7.95**

**Turquoise Mini Folder.** 2" closed. 1.38" stainless blade. Handle has channel inlay of turquoise and brown wood with black composition trim and stainless spacers. Brushed stainless bolsters with lanyard/keyring loop.



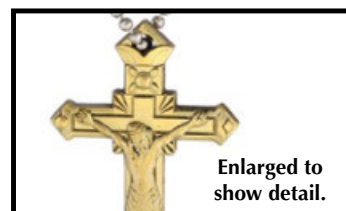
**RR1473** Clip blade. .... **Retail \$7.95**



**RR1474** Razor blade. .... **Retail \$7.95**

## RR1217 Bear Claw.

2" closed. 1.25" stainless blade. Smooth turquoise bone front handle. Brass tone back handle. Knife shape resembles a bear claw. Beaded neck chain. .... **Retail \$10.95**



Enlarged to show detail.



**RR1497 Brass Cross Knife.** 2.38" closed. Mirror polish finish stainless pen blade. Brass handle. Ball chain lanyard. Boxed. .... **Retail \$8.95**



**Cross Knife.**

1.63" closed. Satin finish stainless clip point blade. Keyring. Clam packed.



**RR1581**  
Purple smooth bone handle.  
..... **Retail \$7.95**

**RR1582**  
White smooth bone handle.  
..... **Retail \$7.95**



**Mini Canoe.**

2.75" closed. Stainless spear and pen blades. Nickel silver bolsters. Inlay shield.



**RR055** White smooth bone handle.  
No shield..... **Retail \$12.95**



**RR057** Peacock smooth bone handle.  
..... **Retail \$12.95**



**RR058** Amber jugged bone handle.  
..... **Retail \$12.95**

**Canoe.** 3.63" closed. Stainless spear and pen blades. Nickel silver bolsters with inlay shield.



**RR2297** Black and red G10 handle.  
No shield..... **Retail \$19.95**



**RR048** Amber jugged bone handle. .... **Retail \$18.95**



**RR1949** Navy smooth bone handle.  
..... **Retail \$18.95**

**RR045** White smooth bone handle.  
No shield..... **Retail \$18.95**



**RR1905 Doctor's Knife.**  
3.63" closed. Mirror finish stainless clip and spatula blades. Tobacco smooth bone handle. Nickel silver bolster(s). Inlay shield. Boxed..... **Retail \$19.95**



**RR1899 The Pipe Doctor.**  
3.63" closed. Mirror finish stainless sheepsfoot blade and stem punch. Tobacco smooth bone handle. Nickel silver bolster(s). Inlay shield. Boxed..... **Retail \$22.95**

**RR920 Miniature Jack Knife.** 2" closed. 440 stainless spear and pen blades. Yellow synthetic handle with nickel silver bolster.  
..... **Retail \$5.95**



**ROUGH RYDER**

**Miniature Leg Knife.**

2" closed. 1.13" 440 stainless clip blade. Nickel silver bolsters.



**RR937** White pearl handle. .... **Retail \$7.95**



**RR936** Smooth tobacco bone handle. .... **Retail \$6.95**

**Small Leg Knife.**

3.13" closed. 2" stainless clip blade. Nickel silver bolsters and inlay shield.



**RR971** Hot pink handle.  
..... **Retail \$13.95**



**RR1269** Turquoise handle.  
..... **Retail \$12.95**



**RR1271** Purple handle.  
..... **Retail \$12.95**



**RR837** Pink Lemonade smooth bone handle. .... **Retail \$12.95**



**RR960** Midnight swirl synthetic handle. .... **Retail \$9.95**



**RR1376** Pink synthetic handle with peace shield. Blade features frosted etching love, peace, friendship - with decorative symbols. .... **Retail \$11.95**



**RR148** White smooth bone handle.  
No shield..... **Retail \$12.95**



**RR347** Imitation abalone handle.  
..... **Retail \$10.95**



**RR1440 Bling Lady Leg Knife.**  
3.25" closed. 2.13" 440 stainless clip blade with "bling" and scroll blade etching. Pink smooth bones handle with crystal accents. Grooved and pinched nickel silver bolster with scroll engraving. .... **Retail \$15.95**

**RR2326 Toad Sticker.**

5.38" (13.67cm) closed. Mirror finish stainless blade(s). Buckshot bone handle. Inlay shield. Boxed.  
..... **Retail \$19.95**



**RR745 Two Blade Melon Tester.** 5" closed. 440 stainless pen and saw blades. Brushed stainless handle. Boxed..... **Retail \$9.95**



**RR1202 Melon Tester (The Long Bladed Toad Sticker).**

5.38" closed. 4.5" 440 stainless blade. White smooth bone handle.  
..... **Retail \$16.95**



# ROUGH RYDER

**RR1654 Highland Lockback.**  
4.5" closed. 3.25" satin finish  
stainless clip point blade. Black  
G10 handle. Stainless bolster(s).  
Lanyard hole. Black nylon  
belt sheath. Boxed. **Retail \$27.95**



enlarged



**RR1595 Big Daddy.** 5" closed. Satin  
finish stainless clip blade. Ram's horn  
handle. Inlay shield. Nickel silver  
bolster(s). Boxed. **Retail \$27.95**

**RR22034W** White smooth  
bone handle. No shield.  
**Retail \$19.95**



**RR154** Stag bone handle.  
**Retail \$20.95**



**RR777** Smooth  
tobacco bone handle.  
**Retail \$21.95**



**RR431** Red smooth  
bone handle. **Retail \$19.95**



**RR1254** Purple smooth  
bone handle. **Retail \$19.95**



**RR966** Midnight swirl  
synthetic handle.  
**Retail \$17.95**



## Trapper.

4.13" closed. 440 stainless clip and spey blades.  
Nickel silver bolsters and inlay shield.

**RR22034** Amber  
jigged bone handle.  
**Retail \$19.95**



**RR266** Red jigged  
bone handle.  
**Retail \$19.95**



**RR1253** Smooth  
turquoise bone handle.  
**Retail \$19.95**



**RR597** Smooth yellow  
synthetic handle. **Retail \$17.95**



**RR1371** Imitation turquoise  
handle with spacer stripe.  
**Retail \$19.95**



**RR1194** Master blade features "Once in a Blue Moon" frosted etching.  
Blue smooth bone handle. Moon inlay shield. **Retail \$19.95**



## Bolster Lock.

Mirror finish stainless blade. Red jigged bone handle.  
Nickel silver bolster(s). Inlay shield. Boxed.



**RR1960** Trapper.  
4.13" (10.49cm) closed.  
Clip blade. **Retail \$22.95**



**RR1961** Toothpick.  
4" (10.16cm) closed. Long  
clip blade. **Retail \$17.95**

**Trapper.** 4.13" (10.49cm) closed.  
Mirror finish stainless clip and spey  
blades. Smooth bone handle.  
Nickel silver bolster(s). Boxed.

**RR2234** White handle.  
**Retail \$28.95**



**RR2235** Red handle.  
**Retail \$21.95**



**RR2236** Blue handle.  
**Retail \$28.95**





**Stockman.** 440 stainless clip, spey, and sheepsfoot blades.  
Nickel silver bolster(s). Inlay shield. Boxed.



**RR602** 3.25" closed..... Retail \$15.95



**RR603 Large.**  
4.25" closed.  
..... Retail \$17.95



**RR211 Stockman.** 3.75" closed. 440 stainless clip, spey and sheepsfoot blades. White smooth bone handle with square nickel silver bolsters.  
..... Retail \$20.95



**RR959 Gentleman's Stockman.** 3.13" closed. Stainless clip, sheepsfoot and spey blades. Midnight swirl synthetic handle with grooved nickel silver bolsters and inlay shield. .... Retail \$15.95

**Stockman.**  
3.25" closed. 440 stainless clip, spey  
and sheepsfoot blades. Nickel silver  
bolsters and inlay shield.

**RR195** Amber jugged  
bone handle. ....Retail \$17.95



**RR291** Red jugged bone handle. ....Retail \$17.95

**RR261** Light root wood handle.  
No shield.....Retail \$15.95



**RR587** Checkered green  
"Gunstock" bone handle.  
..... Retail \$21.95



**RR248** White smooth bone handle.  
No shield..... Retail \$17.95

## ROUGH RYDER

**Tiny Stockman.**

2" closed. 440 stainless clip, spey and sheepsfoot blades. Nickel silver bolsters.

**RR811** Old yellow smooth bone handle.  
..... Retail \$5.95



**RR812** Imitation tortoise shell handle. ....Retail \$5.95



**RR814** Jugged amber bone handle.  
..... Retail \$6.95



**RR840** Pink smooth bone handle. .... Retail \$6.95



**Small Stockman.**

2.75" closed. 440 stainless clip, pen and sheepsfoot blades. Nickel silver bolsters and inlay shield.

**RR194** Amber jugged bone handle.  
..... Retail \$15.95



**RR243** White smooth bone handle. No shield.  
..... Retail \$15.95



**RR244** Orange smooth bone handle.  
..... Retail \$15.95



**Stockman.**

3.88" closed. Knives feature 440 stainless clip, spey and sheepsfoot blades. Nickel silver bolsters and inlay shield.

**RR205** Red jugged bone handle.  
.....Retail \$20.95



**RR206** White smooth bone handle. No shield.  
..... Retail \$20.95

**RR053 Congress.**

3.63" closed. Stainless twin sheepsfoot, pen and coping blades. Amber jugged bone handle. Nickel silver bolsters and inlay shield.  
..... Retail \$19.95



# ROUGH RYDER

**Peanut.** 2.88" closed. Stainless clip and pen blades. Nickel silver bolsters and inlay shield.



**RR110** Amber jugged bone handle.  
..... Retail \$11.95



**RR111** Orange smooth bone handle.  
..... Retail \$11.95



**RR112** White smooth bone handle.  
No shield..... Retail \$11.95

**RR1679** Red pick bone handle.  
..... Retail \$13.95



## Baby Toothpick.

3" closed. 2.25" stainless long clip blade.  
Nickel silver bolsters and inlay shield.



**RR060** White smooth bone handle. No shield..... Retail \$10.95



**RR063** Amber jugged bone handle..... Retail \$10.95



**RR1548** Ram's horn bone handle..... Retail \$13.95



**RR505** Imitation tortoise shell handle..... Retail \$8.95

## Cotton Sampler.

4.13" closed. 2.75" stainless wide belly blade. Nickel silver bolster(s). Inlay shield. Lanyard hole. Boxed.

**RR1594**  
Brown ram's horn handle.  
..... Retail \$25.95



**RR1727** Brown stag bone handle.  
..... Retail \$23.95



Mother of pearl and abalone handle may have natural flaws and imperfections.



**RR1839 Moose.** 4.25" closed. Stainless clip and long spey blades. Acrylic handle. Nickel silver bolster(s). Blade etching. Roy Rogers handle artwork on one side and Riders of the Silver Screen artwork on the other. Boxed..... Retail \$19.95

## Miniature Toothpick.

2" closed. 440 stainless long clip blade. Nickel silver bolsters.



**RR978** Black pearl handle..... Retail \$11.95



**RR980** Imitation tortoise shell handle.  
..... Retail \$6.95

## Work Knife.

4.63" closed linerlock. 440 stainless drop point blade. Inlay shield.



**RR304** Red jugged bone handle..... Retail \$21.95



**RR360** Black micarta handle. No shield..... Retail \$17.95



**RR772** Amber jugged bone handle..... Retail \$21.95



**RR817** Smooth yellow synthetic handle..... Retail \$17.95

## Hawkbill. 4" closed. 440 stainless hawkbill blade.

Grooved nickel silver bolster and inlay shield. Lanyard hole.



**RR305** Red jugged bone handle..... Retail \$19.95



**RR764** Amber jugged bone handle..... Retail \$19.95



**RR861** Smooth yellow synthetic handle..... Retail \$17.95



**RR1834 Small Cotton Sampler.** 3" closed. Mirror finish stainless wide belly blade. Tobacco smooth bone handle. Nickel silver bolster(s). Lanyard hole. Inlay shield. Boxed..... Retail \$16.95





**Marlin Spike.** 4.5" closed. 440 stainless sheepsfoot blade and marlin spike. Nickel silver bolsters and inlay shield. Shackle.

- RR535** Amber jigged bone handle..... **Retail \$23.95**  
**RR576** Red jigged bone handle. .... **Retail \$23.95**  
**RR577** White smooth bone handle. No shield..... **Retail \$23.95**  
**RR897** Smooth yellow synthetic handle..... **Retail \$21.95**



**RR1579 Scrimshaw Set.** Trapper. 4.13" closed. Mirror polish finish stainless clip and spey blades. White bone handle. Nickel silver bolster(s). Set includes: trapper knife, etching tools, India ink with swabs, transfer paper, steel wool, pre-crafted design, and nylon carrying pouch. Boxed. .... **Retail \$21.95**

**Folder.** 4" (10.16cm) closed. 3" (7.62cm) satin finish VG-10 stainless clip point blade. Textured aluminum handle. Lanyard hole. Slip joint. Boxed.



**RR2103** Blue and black handle. .... **Retail \$35.95**



**RR2107** Green handle..... **Retail \$35.95**

## ROUGH RYDER



**Arctic Fox Series.**  
Satin finish stainless blades.  
White smooth micarta  
handle. Nickel silver  
bolster(s). Inlay shield. Boxed.



**RR2311** Stockman. 3.75" (9.53cm)  
closed. Clip, sheepsfoot, and  
spey blades..... **Retail \$23.95**



**RR2308** Folder. 3.63" (9.22cm)  
closed. Wharncliffe blade.  
..... **Retail \$21.95**



**RR2310** Sowbelly Trapper. Clip and  
spey blades..... **Retail \$23.95**



**RR2545** Copperhead. Clip and  
skinner blades. .... **Retail \$23.95**

**Red Fox Series.** Satin finish stainless blades. Black and red micarta handle. Nickel silver bolster(s). Inlay shield. Boxed.



**RR2293** Large Moose.  
4.38" (11.13cm) closed. Clip and  
skinner blades. .... **Retail \$29.95**



**RR2291** Copperhead.  
3.75" (9.53cm) closed. Clip and  
skinner blades. .... **Retail \$23.95**



**RR2298** Sowbelly Trapper.  
3.75" (9.53cm) closed. Clip and  
spey blades..... **Retail \$23.95**



**RR2299** Sowbelly Trapper.  
3.75" (9.53cm) closed. Clip and  
spey blades..... **Retail \$23.95**

# ROUGH RYDER

**Imitation Stag Series.** Mirror finish stainless blade(s). Imitation stag handle. Nickel silver bolster(s). Inlay shield. Boxed.



**RR2358 Copperhead.**  
3.75" (9.53cm) closed. Skinner and clip blades. .... **Retail \$21.95**



**RR2361 Hawkbill.** 4" (10.16cm) closed. Hawkbill blade. Lanyard hole. .... **Retail \$21.95**



**RR2359 Canoe.** 3.63" (9.22cm) closed. Spear and pen blades. .... **Retail \$21.95**



**RR2369 Barlow.** 3.25" (8.26cm) closed. Clip and pen blades. .... **Retail \$21.95**



**RR2372 Peanut.** 2.88" (7.32cm) closed. Clip and pen blades. .... **Retail \$13.95**



**RR2363 Stockman.** 3.5" (8.89cm) closed. Clip, sheepfoot, and spey blades. .... **Retail \$21.95**



**RR2364 Cub.** 2.5" (6.35cm) closed. Drop point blade. .... **Retail \$19.95**



**RR2366 Large Congress.**  
3.75" (9.53cm) closed. Sheepfoot, spear, and twin pen blades. .... **Retail \$24.95**



**RR2368 Folding Hunter.**  
5.25" (13.34cm) closed. 4" (10.16cm) clip blade. .... **Retail \$27.95**



**RR2370 Large Moose.**  
4.25" (10.8cm) closed. Clip and long spey blades. .... **Retail \$25.95**



**RR2362 Large Stockman.**  
4.25" (10.8cm) closed. Clip, sheepfoot, and spey blades. .... **Retail \$23.95**



**RR2367 Muskrat.** 3.5" (8.89cm) closed. Dual clip blades. .... **Retail \$17.95**



**RR2360 Trapper.** 4.13" (10.49cm) closed. Clip and spey blades. .... **Retail \$21.95**



**RR2365 Mini Trapper.** 3.5" (8.89cm) closed. Clip and spey blades. .... **Retail \$21.95**

**RR2371 Scout Knife.** 4.25" (10.8cm) closed. Large blade, bottle opener, can opener, screwdriver tip, reamer with sewing eye, and bail. .... **Retail \$27.95**



## Cinnamon Stag Bone Series.

Damascus steel blade(s). Cinnamon stag bone handle. Nickel silver bolster(s). Inlay shield. Boxed.



**RR2154 Toothpick.**  
3" (7.62cm) closed. Long clip blade. .... **Retail \$25.95**



**RR2156 Canoe.**  
3.63" (9.22cm) closed. Spear and pen blades. .... **Retail \$41.95**



**RR2160 Stockman.** 3.75" (9.53cm) closed. Clip, sheepfoot, and spey blades. .... **Retail \$51.95**



**RR2157 Small Moose.**  
3.5" (8.89cm) closed. Clip and long spey blades. .... **Retail \$49.95**

## ROUGH RYDER

### Cinnamon Stag Bone Series.

Mirror finish carbon steel blade(s). Cinnamon stag bone handle. Nickel silver bolster(s). Boxed.



**RR2424 Kamp King.** 3.63" (9.22cm) closed. Awl, bottle opener, can opener, large blade, screwdriver tip, and bail. .... **Retail \$27.95**

#### RR2429 Barlow.

3.25" (8.26cm) closed. Clip blade. .... **Retail \$23.95**



**RR2423 Sway Back.** 3.88" (9.86cm) closed. Wharncliffe, pen, and coping blades. .... **Retail \$27.95**



**RR2421 Stockman.** 3.75" (9.53cm) closed. Clip, sheepfoot, and spey blades. .... **Retail \$25.95**



**RR2422 Copperhead.** 3.75" (9.53cm) closed. Clip and skinner blades. .... **Retail \$25.95**



**RR2427 Half Hawk.** 3.88" (9.86cm) closed. Hawkbill blade. .... **Retail \$25.95**



**RR2426 Cotton Sampler.** 4.13" (10.49cm) closed. Wide belly blade. .... **Retail \$23.95**



**RR2428 Bow Canoe.** Spear and pen blades. .... **Retail \$25.95**



**RR2425 Bow Trapper.** 4" (10.16cm) closed. Clip blade. .... **Retail \$25.95**



**RR2433 Moose.** Clip and long spey blades. .... **Retail \$31.95**



**RR2430 Cattleman.** 4.25" (10.8cm) closed. Clip and pen blades. .... **Retail \$27.95**



**RR2420 Trapper.** 4.13" (10.49cm) closed. Clip and spey blades. .... **Retail \$25.95**



**RR2431 Jumbo Trapper.** 4.5" (11.43cm) closed. Clip and spey blades. .... **Retail \$31.95**

### Brown Smooth Bone Series.

Mirror finish high carbon stainless blades. Brown smooth bone handle. Nickel silver bolster(s). Inlay shield. Boxed.



**RR1977 Stockman.** 3.5" (8.89cm) closed. Clip, coping, and spey blades. .... **Retail \$23.95**



**RR1976 Trapper.** 4.13" (10.49cm) closed. Clip and spey blades. .... **Retail \$23.95**

**Equestrian Trapper.** 4.13" closed. Mirror finish stainless clip blade and hoof pick. Nickel silver bolster(s). Inlay shield. Boxed.



**RR1971 Amber jugged bone handle.** .... **Retail \$22.95**



#### RR2003 Razor Lockback.

4" (10.16cm) closed. 2.5" (6.35cm) mirror finish stainless razor blade. Amber smooth bone handle. Nickel silver bolster(s). Inlay shield. Boxed. .... **Retail \$16.95**



**RR1972 White smooth bone handle.** .... **Retail \$22.95**





# ROUGH RYDER

## Buckshot Series.

Mirror polish finish stainless blade(s). Buckshot bone handle. Inlay shield. Nickel silver bolsters. Boxed.



Enlarged to show detail.



**RR1906 Sowbelly Trapper.**  
3.75" closed. Clip and spey blades  
..... Retail \$22.95



**RR2322 Bow Trapper.** 4" (10.16cm)  
closed. Clip and spey blades.  
..... Retail \$27.95



**RR2324 Half Hawk.** 4" (10.16cm)  
closed. Hawkbill and pen blades.  
..... Retail \$23.95



**RR2323 Copperhead.** 3.75" (9.53cm)  
closed. Clip and skinning blades.  
..... Retail \$23.95



**RR1544 Trapper.** 4.13" closed.  
Clip and spey blades.  
..... Retail \$26.95



**RR2318 Granddad Barlow.**  
5" (12.7cm) closed. Clip blade.  
..... Retail \$24.95



**RR2320 Large Moose.**  
4.88" (12.4cm) closed. Clip and long  
spey blades..... Retail \$27.95

**RR2327 Straight Razor.**  
6.25" (15.88cm) closed.  
..... Retail \$23.95



**RR2319 Stockman.** 3.25" (8.26cm)  
closed. Clip, sheepfoot, and  
spey blades..... Retail \$19.95



**RR2325 Congress.** 3.63" (9.22cm)  
closed. Twin sheepfoot, coping, and  
pen blades..... Retail \$23.95

## Brown Stag Bone Series.

Mirror finish stainless blade(s). Brown stag bone handle. Nickel silver bolster(s). Inlay shield. Boxed.

**RR1848 Trapper.**  
3.75" closed. Clip  
and pen blades.  
..... Retail \$19.95



**RR1806 Barlow.**  
3.25" closed. Clip and  
pen blades..... Retail \$24.95



**RR1797 Hawkbill.**  
4" closed. Hawkbill blade.  
..... Retail \$23.95



**RR1789 Trapper.**  
4.13" closed. Clip  
and spey blades.  
..... Retail \$25.95



**RR1808 Peanut.**  
2.88" closed. Clip and  
pen blades... Retail \$17.95



**RR1804  
Folding Hunter.**  
5.25" closed. Clip  
and skinner blades.  
..... Retail \$31.95



**RR1798 Double Lockback.**  
3.25" closed. Dual clip blades.  
..... Retail \$23.95



**RR1799 Large Stockman.**  
4.88" closed. Clip, sheepfoot,  
and spey blades..... Retail \$29.95



**RR1801  
Jumbo Trapper.**  
5" closed. Clip and  
wharncliffe blades.  
..... Retail \$32.95





**RR2041 Barlow.**  
3.25" closed. Stainless clip and pen blades. Buckshot bone handle.  
Nickel silver bolster(s). Inlay shield. Boxed. .... **Retail \$23.95**



## ROUGH RYDER

enlarged to view detail



side



**RR2197 Jobo Knife Opener.** 3.25" overall length. Stainless construction with green canvas micarta handle. Knife pick and pry bar ends. Clam packed.  
..... **Retail \$15.95**



**RR1892 Bow Trapper.**  
4" closed. Mirror finish stainless clip and spey blades. Tobacco bone handle.  
Nickel silver bolster(s). Boxed. .... **Retail \$22.95**



**Knife Pick.** 2.88" (7.32cm) Full tang. Boxed.



enlarged to  
view detail

**RR1092** Stainless knife opener. Smooth amber bone handle. .... **Retail \$6.95**



enlarged to  
view detail

**RR2321** Stainless knife opener. Buckshot bone handle. .... **Retail \$9.95**

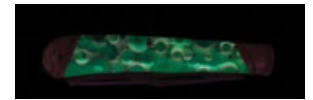


enlarged to  
view detail

**RR2434** Carbon steel knife opener. Cinnamon stag bone handle.  
..... **Retail \$11.95**

**Blue Swirl Series.** Mirror finish stainless blades.

Nickel silver bolster(s). Turquoise and blue acrylic handle with metal ribbon swirls. Each handle will be unique. Boxed.



handle glows in the dark

**RR2065 Razor.**  
6.5" (16.51cm) closed.  
..... **Retail \$17.95**



**RR2070 Toothpick.**  
3" (7.62cm) closed. Long clip blade.  
..... **Retail \$12.95**



**RR2071 Razor Trapper.**  
4.13" (10.49cm) closed.  
Razor and clip blades.  
..... **Retail \$23.95**



**RR2066 Trapper.**  
4.13" (10.49cm) closed.  
Clip and spey blades.  
..... **Retail \$23.95**



**RR2068 Folding Hunter.**  
5.25" (13.34cm) closed.  
Clip blade. .... **Retail \$25.95**



**RR2074 Razor Barlow.** 3.38" (8.59cm) closed.  
Razor and pen blades. Nickel silver bolster(s).  
..... **Retail \$21.95**



**RR2069 Lockback.**  
3" (7.62cm) closed.  
..... **Retail \$16.95**



**RR2073 Stockman.**  
4.25" (10.8cm) closed.  
Clip, sheepfoot,  
and spey blades.  
..... **Retail \$25.95**



**RR2076 Congress.** 3.63" (9.22cm) closed.  
Spear, sheepfoot, and twin pen blades.  
..... **Retail \$23.95**



**RR2072 Lockback.**  
3.63" (9.22cm) closed.  
Drop point blade. .... **Retail \$21.95**



# ROUGH RYDER

## Copper Ribbon Swirl Series.

3.75" (9.53cm) closed. Mirror finish stainless blade(s). Copper bolster(s). Black acrylic handle with copper ribbon swirls. Each handle will be unique. Boxed.



### RR2060 Canoe.

3.63" (9.22cm) closed.  
Spear and pen blades.

.....Retail \$23.95

### RR2062 Cub.

2.5" (6.35cm) closed.  
Drop point blade.

.....Retail \$15.95



### RR2061 Small Leg.

3.25" (8.26cm) closed.

Clip blade.....Retail \$15.95

### RR2063 Copperhead.

3.75" (9.53cm) closed. Clip and  
skinner blades. ....Retail \$23.95



### RR2064 Stockman.

3.75" (9.53cm) closed. Clip,  
sheepsfoot, and spey blades.

.....Retail \$23.95

**Brass Lockback.** Satin finish 440 stainless clip point blade.  
Brushed brass handle. Lanyard hole. Boxed.



**RR2004** 2.88" (7.32cm) closed. 2.13" (5.41cm) blade. ....Retail \$7.95



**RR1978** 3.25" (8.26cm) closed. 2.5" (6.35cm) blade. ....Retail \$10.95



Enlarged to show  
detail.

**RR1457 Cowboy Knife Brass.** 3.5" closed.  
Mirror finish spey blade. Brass handle with  
cowboy artwork. Boxed.....

Retail \$13.95



**RR2179 Linerlock.** 5" (12.7cm) closed.  
3.75" (9.53cm) satin finish D2 tool steel  
Wharncliffe blade. Polished brass handle.  
Extended tang. Lanyard hole. Pocket clip. Boxed.....

Retail \$51.95



For more Rough Ryder items see:

- » Camping & Survival
- » Knifemaking
- » Protection & Defense
- » Razors & Grooming
- » Sharpeners
- » Swords
- » Wood Carving

Please refer to the index for specific page numbers.

## Black and Silver Glitter Series.

Mirror finish stainless blade(s). Black and silver glitter  
synthetic handle. Nickel silver bolster(s). Inlay shield. Boxed.



### RR2011 Cub Lockback.

2.5" (6.35cm) closed.  
1.25" (3.18cm) blade.

.....Retail \$14.95



### RR2010 Stockman.

3.5" (8.89cm) closed. Clip,  
sheepsfoot, and spey blades.

.....Retail \$21.95

## Copperstone Series.

Titanium finish 440 stainless blade. Synthetic  
stone handle with copper bolster. Boxed.

**RR1527 Trapper.** 4.13" closed. Clip and  
spey blades.....Retail \$19.95



**RR1528 Toothpick.** 3" closed. Long  
clip blade. ....Retail \$11.95



## Copper Series.

Satin finish blade. Copper handle. Extended tang.  
Lanyard hole. Pocket clip. Boxed.



**RR2164 Linerlock.** 4.25" (10.8cm) closed. 3.25" (8.26cm) VG-10 stainless  
blade. Thumb stud. ....Retail \$51.95



**RR2165 Linerlock.** 4.5" (11.43cm) closed.  
3.5" (8.89cm) VG-10 stainless blade.  
.....Retail \$51.95



**RR2238 Linerlock.** 5" (12.7cm)  
closed. 3.75" (9.53cm) D2 tool steel  
Wharncliffe blade.....Retail \$51.95





# ROUGH RYDER

**RR1843 Hawkbill.** 4" closed.  
Hawkbill blade..... **Retail \$21.95**



**RR2039 Barlow.**  
3.25" closed. Clip and  
pen blades..... **Retail \$23.95**



**Backwoods Bone Series.**  
Black stonewash finish stainless blade(s). Amber sawcut  
bone handle. Copper bolster(s). Inlay shield. Boxed.



**RR1840 Trapper.**  
Clip and spey blades. .... **Retail \$27.95**



**RR1841 Bushcrafter.** 5" closed.  
Clip and axe blades. .... **Retail \$30.95**



**Copper Coil Series.**  
Black stonewash finish stainless blade(s).  
Brown smooth bone handle with copper inlay.  
Copper bolster(s). Boxed.

**RR1828 Trapper.** 4.13" closed.  
Clip and spey blades. .... **Retail \$28.95**



**RR1829 Large Moose.**  
4.38" (11.13cm) closed.  
Clip and long spey blades.  
..... **Retail \$28.95**



**RR1830 Sowbelly.** 3.75" (9.53cm) closed.  
Clip, sheepfoot, and spey blades.  
..... **Retail \$27.95**



**RR1831 Lockback.**  
3.88" (9.86cm) closed. 2.88" (7.32cm)  
drop point blade..... **Retail \$23.95**

**Carbon Steel Series.**  
Titanium finish carbon steel blade. Black G10 handle. Inlay shield.  
Nickel silver bolsters. Boxed.

**RR1570 Trapper.**  
Closed: 4.13". Clip and spey blades.  
..... **Retail \$24.95**



**RR1571 Canoe.**  
Closed: 3.63". Spear  
and pen blades.  
..... **Retail \$22.95**

**RR1572 Trapper.** Closed: 4". Clip and  
spey blades. Black cord lanyard  
with bead. .... **Retail \$25.95**



**Black Bone Series.**  
Black stonewash finish stainless blade. Black bone handle. Inlay shield.  
Copper bolsters. Boxed.



Enlarged  
to show  
detail.

**RR1584 Trapper.**  
Closed: 4.13". Clip and  
spey blades... **Retail \$24.95**



**RR1597 Fish Knife.** 5" closed. 440 stainless blade.  
Black smooth bone handle. Copper bolster(s).  
Bail. Tools include: Saw blade | Bottle opener  
| Ruler. Magnetic disgorger. Hook sharpener.  
Boxed..... **Retail \$19.95**



**RR1588 Baby Toothpick.**  
Closed: 3". Long clip blade.  
..... **Retail \$14.95**



**RR1587 Hawkbill.**  
Closed: 4". Hawkbill blade.  
..... **Retail \$22.95**



# ROUGH RYDER

**Lollipop Series.** Mirror finish stainless blades. Multi plastic handle. Nickel silver bolster(s). Inlay shield. Boxed.



## RR1437

### Slow Burn Trapper.

4.13" (10.49cm) closed. Stainless clip and spey blades. Multi synthetic handle. Nickel silver bolster(s). Boxed.

..... **Retail \$19.95**



**RR2463 Trapper.** 4.13" (10.49cm) closed. Clip and spey blades.  
..... **Retail \$27.95**



**RR2469 Canoe.** 3.63" (9.22cm) closed. Spear and pen blades.  
..... **Retail \$23.95**



**RR2467 Large Moose.** 4.25" (10.8cm) closed. Clip and long spey blades. .... **Retail \$29.95**



**RR2464 Stockman.** 3.75" (9.53cm) closed. Clip, sheepfoot, and spey blades. .... **Retail \$27.95**

## Old Southwest Series.

Stainless blade(s). Nickel silver bolster(s). Red and blue stone handle with southwest style nickel silver inlays. Boxed.



**RR1751 Bow Trapper.** 4" (10.16cm) closed. Clip and spey blades.  
..... **Retail \$30.95**



**RR1752 Large Trapper.** 5" (12.7cm) closed. Clip and spey blades. .... **Retail \$35.99**

## RR1748 Baby Toothpick.

3" (7.62cm) closed. Long clip blade. .... **Retail \$19.95**



## RR1758 Doctor's Knife.

3.75" (9.53cm) closed. Spear blade. .... **Retail \$27.95**



**RR1750 Canoe.** 3.63" closed. Spear and pen blades.  
..... **Retail \$27.95**



**RR1747 Double Lockback.** 3.38" (8.59cm) closed. Dual clip blade. .... **Retail \$26.95**



**RR1757 Congress.** 3.75" (9.53cm) closed. Sheepfoot, spear, and twin pen blades. .... **Retail \$29.95**



**RR1749 Hawkbill.** 4" (10.16cm) closed. Hawkbill blade. .... **Retail \$32.95**



**RR1756 Stockman.** 4.25" (10.8cm) closed. Clip, sheepfoot, and spey blades. .... **Retail \$30.95**



**RR1755 Trapper.** 4.13" (10.49cm) closed. Clip and spey blades. .... **Retail \$31.95**



**RR1754 Large Moose.** 4.25" (10.8cm) closed. Clip and long spey blades. .... **Retail \$32.95**



**RR1753 Stockman.** 3.75" (9.53cm) closed. Clip, sheepfoot, and spey blades. .... **Retail \$27.95**



**Stoneworx Series.**

Knives feature 440 stainless blade(s), custom handle of turquoise, mother of pearl and other stones. Handles are individually fitted with the finest natural stone materials. Each piece is hand-cut and hand-inlaid. Sculpted nickel silver bolster(s). No two pieces are exactly alike. Handles may have natural flaws and imperfections.

**ROUGH RYDER**



**RR2405 Congress.** 3.75" (9.53cm) closed. Pen, sheepsfoot, and twin coping blades.  
..... **Retail \$33.95**



**RR918 Trapper.** 4.13" closed. Clip and spey blades. .... **Retail \$31.95**



**RR916 Small Toothpick.** 3" closed. Long clip blade. .... **Retail \$17.95**

**RR2400 Copperhead.** 3.5" (8.89cm) closed. Clip and skinner blades.  
..... **Retail \$29.95**



**RR2401 Muskrat.** 3.88" (9.86cm) closed. Dual clip blades. .... **Retail \$33.95**

**RR2403 Barlow.** 3.25" (8.26cm) closed. Clip and pen blades.  
..... **Retail \$31.95**



**RR2406 Hawkbill.** 4" (10.16cm) closed. Hawkbill blade.  
..... **Retail \$33.95**



**RR2410 Leg Knife.** 3.25" (8.26cm) closed. Clip blade.  
..... **Retail \$25.95**



**RR2408 Small Stockman.** 3.25" (8.26cm) closed. Clip, sheepsfoot, and spey blades.  
..... **Retail \$25.95**



**RR2419 Trapper.** 4.13" (10.49cm) closed. Clip and spey blades.  
..... **Retail \$35.95**



**RR2402 Canoe.** 3.63" (9.22cm) closed. Spear and pen blades.  
..... **Retail \$31.95**



**RR911 Peanut.** 2.75" closed. Clip and pen blades. .... **Retail \$17.95**

**RR2409 Large Toothpick.** 5" (12.7cm) closed. Long clip blade.  
..... **Retail \$33.95**



**RR1420 Small Texas Toothpick.** 3" closed. Long clip blade.  
..... **Retail \$17.95**



**RR1164 Barlow.** 2.88" closed lockback. 1.88" clip blade.  
..... **Retail \$17.95**



**RR2407 Sowbelly Lockback.** 4.13" (10.49cm) closed. Clip point blade.  
..... **Retail \$33.95**



**RR2413 Folder.** 3.5" (8.89cm) closed. Wharncliffe blade. .... **Retail \$29.95**



**RR2417 Toothpick.** 3" (7.62cm) closed. Long clip blade.  
..... **Retail \$21.95**



**RR2412 Cub Lockback.** 2.5" (6.35cm) closed. 1.5" (3.81cm) spear point blade. .... **Retail \$27.95**



**RR2418 Folding Razor.** 6.5" (16.51cm) closed. 3.5" (8.89cm) blade. Extended tang. .... **Retail \$31.95**

**RR2411 Sowbelly.** 3.75" (9.53cm) closed. Large clip, small clip, sheepsfoot, pen, and spey blades. .... **Retail \$35.95**



**RR2416 Moose.** 3.5" (8.89cm) closed. Clip and long spey blades.  
..... **Retail \$33.95**



**RR2414 Bow Trapper.** 4" (10.16cm) closed. Clip and spey blades. .... **Retail \$35.95**



**RR2415 Texas Stockman.** 4.88" (12.4cm) closed. Clip, sheepsfoot, and spey blades.  
..... **Retail \$39.95**





# ROUGH RYDER



folded view



## RR2000 Folding Push Dagger Lockback.

Mirror finish double edge stainless blade. Green smooth bone handle. Nickel silver bolster(s). 6" overall. 3" blade. Folds from push dagger to fixed blade. Black nylon belt sheath. Boxed..... **Retail \$25.95**

## A Stroke of Luck Series.

Knives feature 440 stainless blades. Master blade has frosted Stroke of Luck etching. Smooth green bone handle with embossed nickel silver bolsters with shamrock. Horseshoe inlay shield.

**RR1056 Trapper.** 4.13" closed. Clip and spey blades.

..... **Retail \$25.95**



**RR1062 Canoe.** 3.63" closed. Spear and pen blades.

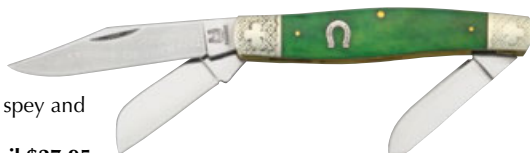
..... **Retail \$22.95**



**RR1057 Stockman.**

4.25" closed. Clip, spey and sheepsfoot blades.

..... **Retail \$27.95**



**Green Smooth Bone Series.** Mirror finish stainless blade(s). Green smooth bone handle. Nickel silver bolster(s). Handle color may vary due to natural variations in the bone. Boxed.



**RR2232 Toothpick.** 3" (7.62cm) closed. Long clip blade.

..... **Retail \$11.95**



**RR2231 Cub Green Lockback.**

2.5" (6.35cm) closed. 1.5" (3.81cm) spear blade.

..... **Retail \$15.95**

## RR2115 Trapper.

4.13" (10.49cm) closed. Mirror finish stainless clip and spey blades. Blue sculpted bone handle. Nickel silver bolster(s). Black synthetic liners. Inlay shield. Boxed. ....

**Retail \$23.95**



## Malachite and Pearl Series.

Mirror finish stainless blade(s). Malachite and pearl handle. Nickel silver bolster(s). Boxed.

## RR2032 Trapper.

4.13" (10.49cm) closed. Clip and spey blades....

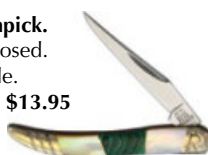
**Retail \$29.95**



## RR2034 Toothpick.

3" (7.62cm) closed. Long clip blade.

..... **Retail \$13.95**



## RR2033 Small Leg Knife.

3.25" (8.26cm) closed. Clip blade.....

**Retail \$19.95**



## Working Man Folder.

Mirror finish 440 stainless blade(s). Green smooth bone handle. Nickel silver bolster(s). Pocket clip. Thumb disk. Boxed.



## RR1958 Stockman.

3.88" (9.86cm) closed. Clip, small clip, and sheepsfoot blades. ....

**Retail \$23.95**



## RR1957 Folder.

4.25" (10.8cm) closed. Clip blade.....

**Retail \$19.95**

## RR2001 Trapper.

4.13" closed. Clip and spey blades.

..... **Retail \$23.95**



## RR2002 Leg Knife.

3.25" closed. Clip blade.

..... **Retail \$18.95**



## Amber Turquoise Stone Handle.

Mirror finish stainless blade(s). Nickel silver bolster(s). Inlay shield. Amber turquoise stone handle. Boxed.