

**COME CELEBRATE WITH US FOR OUR  
20TH ANNIVERSARY**



**THE  
LEAGUE  
FINALS XX**

**WESTGATE**



**FOR MORE INFORMATION  
PLEASE CONTACT THERESA AT  
TKATTREG@GMAIL.COM  
408.316.4672**



IN ASSOCIATION WITH  
**KAJ** MEDIA GROUP

**YATU  
SABES** PRODUCTIONS



# **LEAGUE FINALS XX**

*“Reign & Conquer!”*

## ***FORMAL INVITATION***

**In its 20th Anniversary Season in the year Two Thousand and Twenty Four, The League presents The League Finals XX at the illustrious Westgate Resort Hotel Casino in Las Vegas, Nevada!!**

**Reigning Monarchs and their dynastic Royal Kingdoms will converge in a two-day melee tournament to determine which honorary champions will reign supreme! The LEAGUE will transform the host site into a royal coliseum where the kingdoms clash and champions will be crowned.**

**Don't let your Kingdom miss out! Be a part of the Monarchy Melee, Step into the Spotlight, and show the World your finest Battle Warriors in front of the World Stage!!!**

**LEAGUE FINALS XX....."REIGN & CONQUER!"**

**LAS VEGAS is a City built on Hopes, Dreams, and a little bit of Crazy. “Sin City is known for it's gleaming Neon Lights, Iuxurious Mega Resorts, High Roller Gambling, High End Dining options, and notable Celebrity Shows & Musicals. With all these entertainment options The LEAGUE FINALS has evolved into an intriguing Competition Vacation Destination for the entire Family!!**

**The Westgate Resort Casino is at the Northern point of the Las Vegas strip. Formerly known as the International Hotel, this landmark began the era of mega-resorts in the early 1970's. Resort guests will enjoy the convenience of being one block from the Las Vegas strip, spacious and renovated rooms, a vitalizing swimming pool & cabana area, the most iconic Sports Book in the area, and an onsite Monorail stop for easy access to other destinations on the Las Vegas strip.**

**Please note: All competitors are required to stay at the Westgate Resort Casino or pay an additional registration penalty fee for each division. Please understand that attendees staying at the Resort is a vital component to the success of the League Finals.**

**The League cannot provide the VERY SPACIOUS venue for the tournament and the Family Amenities and Activities the Hotel offers without the support of our attendees staying at the hotel.**

# **“IMPERIAL INVASION”**

## **OPENING CEREMONIES**

*Friday, August 30th 10:00am*

### ***Introductions Of The Dynastic Kingdoms:***

*Competitors and their Teams will be formally and uniquely introduced. Dojo Teams will be encouraged to bring forth their best representation and dress uniformly in their Team-themed attire. Dont forget to bring your Team Banners so you can showcase your group presence! Submit your Team Entrance Music and walk on stage with your Team and start your weekend competition in grandeur stylishness. Team must report to the Staging Area by 10am, Friday, August 30th in order to partake in the Ceremonial Entrance. Show your Team Pride and ARRIVE EARLY to be a part of the memorable ceremony !!*

### ***Regal ALL-LEAGUE ALL-STAR Presentations:***

*More than two dozen League Competitors will receive an honorable recognition for their sensational performances throughout the regular season and receive an All League All Star Honor.*

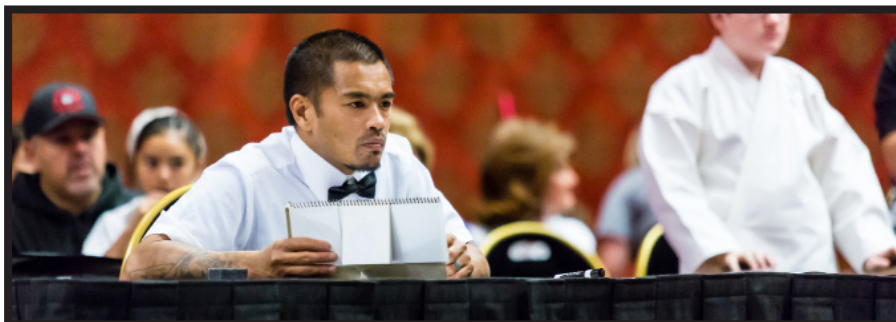
### ***The Kingmaker’s Oath Of Competition:***

*On behalf of all the competitors and officials participating in the 20th anniversary of The League Finals, a Honorary League Competitor & League Official will have the bestowed privilege for reciting the Athletic Competitive Oath & Officials Oath of Fairness.*

***National Anthem:*** *The American National Anthem will be performed by an honored individual as chosen by the League*

### ***Melee Of Monarchs Commencement Announcement:***

*A revered honoree will make the Commencement Announcement and open the League Finals XX.*





## ***”Coronation Of Champions” Closing Ceremonies***

*Saturday, August 31st 6:00pm*

### ***Knights Of The Roundtable Qualifier Award Presentation:***

*Competitors who amassed their respective Minimum Qualifying Point Totals in their respective Conferences will be awarded with a keepsake award for their valiant efforts during the 2024 Regular Season.*

### ***The Imperial Guard Circle Of Honor:***

*The League Governing Body will select martial artists worthy of MVP Honors in the following categories: Adult Katas, Men’s Point Sparring, Women’s Point Sparring, Junior Boys Katas, Junior Girls Katas, Junior Boys Sparring, and Junior Girls Sparring. Respective Conference Directors will also award Conference Player Awards to deserving honorees in their region.*

### ***The Royal Triumph Award Coronation:***

*The honorees of the Grand Champion Series will be awarded with an impressive Award for their mighty accomplishments.*

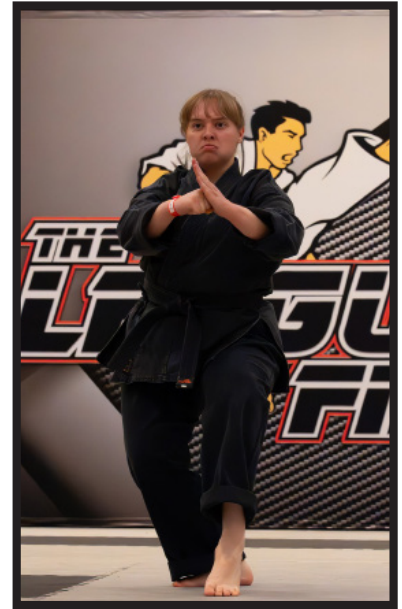
### ***The Royal Family’s Showcase Of Stars:***

*Fans will be screaming for their favorite performers as selected showcase performers will perform their Kata and Fighting Skills on stage in thrilling exhibition displays.*

### ***Throne of Champions Title Award Presentation:***

*Valiant Champions will be honored in triumphant victory with a Championship Title Ring. Those who prove themselves worthy during the weekend tournament challenge by winning their division(s) will be honored with a League Finals Title Award and introduced to the Closing Ceremony Audience.*





## **SCHEDULE OF EVENTS**

The 2024 League Awards Presentations and Title Awards Presentation will take place during the Saturday Evening for The LEAGUE CLOSING CEREMONIES.

### **FRIDAY, August 30th 10:30am**

- 8:00am Registration Opens
- 9:00am Judges, Coordinators, Scorekeepers Meeting in the Main Ballroom
- 10:00am Teams/Players/Coaches/Officials convene in Main Ballroom
- 10:30am **“Imperial Invasion” OPENING CEREMONIES**

11:00am Competition Begins (Demo Team Runoffs, Men’s Open Weight Challenge, Traditional Kata, Creative/Musical Katas, Weapons, Self Defense, Sync Forms, Flag Sparring, First Timer’s Kata, Royal Cup Katas, Handi-Capable Katas)

### **SATURDAY, August 31st 9:00am**

- 7:30am Registration Opens
- 8:00am Judges, Coordinators, Scorekeepers Meeting in Main Ballroom
- 9:00am Competition Begins (First Timer’s Sparring, Point Sparring, Tag Team Sparring, Royal Cup Sparring)



### **SATURDAY, August 31st 6:00pm**

- 5:00pm Preferred Seating opens for Pre-Paid Reserved Seating
- 5:30pm Competitors/Spectators report at Main Ballroom Front Door for Open Seating
- 6:00pm **“Coronation Of Champions” CLOSING CEREMONIES**



# ***PLAYER SEEDING***

All League Finals XX Seedings will be set on Monday, August 19th, 2024. Please submit and report any Point Discrepancies or manual point submissions by this date. All points will be finalized and posted on the League Website: [www.TheLeagueMA.com](http://www.TheLeagueMA.com)

Competitors who participated in the 2024 League Regular Season Events can view their seedings in each division on the website under the 'Ratings' Link.

The 2024 League Finals XX will feature athletes from different Conferences across the Americas. The League established Conferences to its 2024 Season Schedule including: All 50 of The United States, Canada, Mexico, Central America and South America.

## **WE WELCOME ALL COMPETITORS THAT COMPETE IN OTHER CIRCUITS**

Kata Divisions will feature the "Seed Preference" element, while there will be "Double Elimination" for seeded players in Point Sparring Divisions.

The Order of Performance in Kata Divisions in the Finals will be determined by Seed Preference. This means the #1 seed in each Kata Division will have 1st choice as far as when they perform their kata (perform first, second, third, etc.). After, the #2 seed chooses their performance position, followed by the #3 seed, etc..

Wildcard Seeds in katas will be randomly placed in the remaining positions by the Ring Coordinator.

In Point Sparring, all seeded players receive Double Elimination status. This means they must lose twice before being officially eliminated from the Division.

The "Wildcard" option will be at play in Point Sparring as well. A competitor who falls below the Finals Qualifying Requirement will enter the WLF XX as a Wildcard Seed. A Wildcard Seed has the lowest possible seed in each division. Wildcards are eligible to compete for a Divisional Title. They only receive SINGLE ELIMINATION status throughout all rounds in sparring.

First Timer's Sparring and First Timer's Kata is a No-Seeded Random Drawing Division.







## ***JUNIOR FIRST TIMER TITLE***

There is no better setting for a First Timer Experience than the WORLD LEAGUE FINALS to kickoff your young child's Sport Martial Arts career. This is a fantastic opportunity for inexperienced sport martial artists to partake in a championship environment.

If you or your young athlete are perhaps skeptical or timid about participation in a martial arts tournament, register in our specialized First timer's division where future superstars can ease their way into the mainstream "regular divisions" with this pleasing competition experience.

The First timer's division is designed to be a division where inexperienced or martial artists new to the LEAGUE can compete in a non-threatening environment.

In First Timer's Katas, the First timer athlete runs through the same routine as a "regular division" athlete, including performing their kata and receiving scores from each judge.

In First timer sparring, athletes compete with other new comers for a one round sparring match. Contact is controlled to a minimum.

It is a tremendous way for Rookies to build up their CONFIDENCE with so much positive support by judges and the onlooking crowd. Athletes also get used to the overall tournament feel and environment and gain valuable experience performing in front of a crowd.

# ***JUNIOR FLAG SPARRING TITLE COMPETITION***

Flag Sparring is designed for juniors who are being introduced to the open competition scene. It is a fantastic way to get junior martial artists on the competition Floor executing characteristics necessary to transition into point combat sparring.

In Flag Sparring competitors learn how to maintain competitiveness, close distance, develop timing, generate aggressiveness, elude and improve footwork, block and counterattack, and countless other characteristics that make up a skillful point Fighter.

Sign your Junior Martial Artists up and have them join the Finals Competition in this hybrid competition that is Skill Building, Fun, and Competitive!! Remember, winners will win a World League Finals Title!!!

## **RULES FOR FLAG SPARRING**

Length of Match: 90 seconds

Elimination Type: Single Elimination

Scoring System: First Player to **5 points** OR Player with the most points at the end of Regulation Time

Rules of Play:

- \*Each player will be provided a Flag Belt containing 2 Flags
- \*Players must provide their own Foam Head Gear & Mouth Piece
- \*The objective is to maneuver and pull and possess the entire Flag Belt off of your opponent
- \*No Flag Holding or Ground Fighting is allowed

Divisions:

Divisions are for players of ALL RANKS

Flag-1: 5yrs & Under Boys/Girls

Flag-2A: 6-7yrs Girls

Flag-2B: 6-7yrs Boys

Flag-3A: 8-9yrs Girls

Flag-3B: 8-9yrs Boys

Flag-4A: 10-11yrs Girls

Flag-4B: 10-11yrs Boys





# ROYAL CUP COMPETITION



THE ROYAL CUP DIVISIONS IS OPEN TO  
BEG, INT, ADV, BLACK BELT TO BECOME THE ROYAL CUP CHAMPION IN:

TRADITIONAL EMPTY HANDS AND WEAPONS FORMS  
CMX EMPTY HANDS AND WEAPONS FORMS  
POINT FIGHTING (single elimination)

DO YOU HAVE WHAT IT TAKES TO BECOME THE ROYAL CUP CHAMPION ?

WHO WILL TAKE HOME THE BEAUTIFUL CHAMPIONSHIP ROYAL CUP ?

## ROYAL CUP CREATIVE FORMS (NOVICE RANK)

Div#	Age	Rank	Gender
RCC-1	7-	Novice	M/F
RCC-2	8-9	Novice	M/F
RCC-3	10-11	Novice	M/F
RCC-4	12-13	Novice	M/F
RCC-5	14-15	Novice	M/F
RCC-6	16-17	Novice	M/F
RCC-7	18+	Novice	M/F
RCC-8	35+	Novice	M/F
RCC-9	50+	Novice	M/F

## ROYAL CUP TRADITIONAL FORMS (NOVICE RANK)

Div#	Age	Rank	Gender
RCT-1	7-	Novice	M/F
RCT-2	8-9	Novice	M/F
RCT-3	10-11	Novice	M/F
RCT-4	12-13	Novice	M/F
RCT-5	14-15	Novice	M/F
RCT-6	16-17	Novice	M/F
RCT-7	18+	Novice	M/F
RCT-8	35+	Novice	M/F
RCT-9	50+	Novice	M/F

## ROYAL CUP TRADITIONAL WEAPONS (NOVICE RANK)

Div#	Age	Rank	Gender
RCTW-1	7-	Novice	M/F
RCTW-2	8-9	Novice	M/F
RCTW-3	10-11	Novice	M/F
RCTW-4	12-13	Novice	M/F
RCTW-5	14-15	Novice	M/F
RCTW-6	16-17	Novice	M/F
RCTW-7	18+	Novice	M/F
RCTW-8	35+	Novice	M/F
RCTW-9	50+	Novice	M/F

## ROYAL CUP CREATIVE FORMS (INTERMEDIATE RANK)

Div#	Age	Rank	Gender
RCC-10	7-	Int.	M/F
RCC-11	8-9	Int.	M/F
RCC-12	10-11	Int.	M/F
RCC-13	12-13	Int.	M/F
RCC-14	14-15	Int.	M/F
RCC-15	16-17	Int.	M/F
RCC-16	18+	Int.	M/F
RCC-17	35+	Int.	M/F
RCC-18	50+	Int.	M/F

## ROYAL CUP TRADITIONAL FORMS (INTERMEDIATE RANK)

Div#	Age	Rank	Gender
RCT-10	7-	Int.	M/F
RCT-11	8-9	Int.	M/F
RCT-12	10-11	Int.	M/F
RCT-13	12-13	Int.	M/F
RCT-14	14-15	Int.	M/F
RCT-15	16-17	Int.	M/F
RCT-16	18+	Int.	M/F
RCT-17	35+	Int.	M/F
RCT-18	50+	Int.	M/F

## ROYAL CUP TRADITIONAL WEAPONS (INTERMEDIATE RANK)

Div#	Age	Rank	Gender
RCTW-10	7-	Int.	M/F
RCTW-11	8-9	Int.	M/F
RCTW-12	10-11	Int.	M/F
RCTW-13	12-13	Int.	M/F
RCTW-14	14-15	Int.	M/F
RCTW-15	16-17	Int.	M/F
RCTW-16	18+	Int.	M/F
RCTW-17	35+	Int.	M/F
RCTW-18	50+	Int.	M/F

## ROYAL CUP CREATIVE FORMS (ADVANCE RANK)

Div#	Age	Rank	Gender
RCC-19	7-	Adv.	M/F
RCC-20	8-9	Adv.	M/F
RCC-21	10-11	Adv.	M/F
RCC-22	12-13	Adv.	M/F
RCC-23	14-15	Adv.	M/F
RCC-24	16-17	Adv.	M/F
RCC-25	18+	Adv.	M/F
RCC-26	35+	Adv.	M/F
RCC-27	50+	Adv.	M/F

## ROYAL CUP TRADITIONAL FORMS (ADVANCE RANK)

Div#	Age	Rank	Gender
RCT-19	7-	Adv.	M/F
RCT-20	8-9	Adv.	M/F
RCT-21	10-11	Adv.	M/F
RCT-22	12-13	Adv.	M/F
RCT-23	14-15	Adv.	M/F
RCT-24	16-17	Adv.	M/F
RCT-25	18+	Adv.	M/F
RCT-26	35+	Adv.	M/F
RCT-27	50+	Adv.	M/F

## ROYAL CUP TRADITIONAL WEAPONS (ADVANCE RANK)

Div#	Age	Rank	Gender
RCTW-19	7-	Adv.	M/F
RCTW-20	8-9	Adv.	M/F
RCTW-21	10-11	Adv.	M/F
RCTW-22	12-13	Adv.	M/F
RCTW-23	14-15	Adv.	M/F
RCTW-24	16-17	Adv.	M/F
RCTW-25	18+	Adv.	M/F
RCTW-26	35+	Adv.	M/F
RCTW-27	50+	Adv.	M/F

## ROYAL CUP CREATIVE FORMS (BLACK BELT RANK)

Div#	Age	Rank	Gender
RCC-28	7-	Blk.	M/F
RCC-29	8-9	Blk.	M/F
RCC-30	10-11	Blk.	M/F
RCC-31	12-13	Blk.	M/F
RCC-32	14-15	Blk.	M/F
RCC-33	16-17	Blk.	M/F
RCC-34	18+	Blk.	M/F
RCC-35	35+	Blk.	M/F
RCC-36	50+	Blk.	M/F

## ROYAL CUP TRADITIONAL FORMS (BLACK BELT RANK)

Div#	Age	Rank	Gender
RCT-28	7-	Blk.	M/F
RCT-29	8-9	Blk.	M/F
RCT-30	10-11	Blk.	M/F
RCT-31	12-13	Blk.	M/F
RCT-32	14-15	Blk.	M/F
RCT-33	16-17	Blk.	M/F
RCT-34	18+	Blk.	M/F
RCT-35	35+	Blk.	M/F
RCT-36	50+	Blk.	M/F

## ROYAL CUP TRADITIONAL WEAPONS (BLACK BELT RANK)

Div#	Age	Rank	Gender
RCTW-28	7-	Blk.	M/F
RCTW-29	8-9	Blk.	M/F
RCTW-30	10-11	Blk.	M/F
RCTW-31	12-13	Blk.	M/F
RCTW-32	14-15	Blk.	M/F
RCTW-33	16-17	Blk.	M/F
RCTW-34	18+	Blk.	M/F
RCTW-35	35+	Blk.	M/F
RCTW-36	50+	Blk.	M/F

**MORE ROYAL CUPS DIVISIONS CONTINUED ON NEXT PAGE**

# ROYAL CUP COMPETITION

THE ROYAL CUP DIVISIONS IS OPEN TO  
BEG, INT, ADV TO BECOME THE ROYAL CUP CHAMPION IN:

TRADITIONAL EMPTY HANDS AND WEAPONS FORMS  
CMX EMPTY HANDS AND WEAPONS FORMS  
POINT FIGHTING (single elimination)

DO YOU HAVE WHAT IT TAKES TO BECOME THE ROYAL CUP CHAMPION?

BIG BEAUTIFUL CHAMPIONSHIP CUP WILL BE AWARDE TO THE WINNER.



## ROYAL CUP CREATIVE WEAPONS (NOVICE RANK)

Div#	Age	Rank	Gender
RCCW-1	7-	Novice	M/F
RCCW-2	8-9	Novice	M/F
RCCW-3	10-11	Novice	M/F
RCCW-4	12-13	Novice	M/F
RCCW-5	14-15	Novice	M/F
RCCW-6	16-17	Novice	M/F
RCCW-7	18+	Novice	M/F
RCCW-8	35+	Novice	M/F
RCCW-9	50+	Novice	M/F

## ROYAL CUP SPARRING (NOVICE RANK)

Div#	Age	Rank	Gender
RCS-1	7-	Novice	M
RCS-2	7-	Novice	F
RCS-3	8-9	Novice	M
RCS-4	8-9	Novice	F
RCS-5	10-11	Novice	M
RCS-6	10-11	Novice	F
RCS-7	12-13	Novice	M
RCS-8	12-13	Novice	F
RCS-9	14-17	Novice	M
RCS-10	14-17	Novice	F

## ROYAL CUP CREATIVE WEAPONS (INTERMEDIATE RANK)

Div#	Age	Rank	Gender
RCCW-10	7-	Int.	M/F
RCCW-11	8-9	Int.	M/F
RCCW-12	10-11	Int.	M/F
RCCW-13	12-13	Int.	M/F
RCCW-14	14-15	Int.	M/F
RCCW-15	16-17	Int.	M/F
RCCW-16	18+	Int.	M/F
RCCW-17	35+	Int.	M/F
RCCW-18	50+	Int.	M/F

## ROYAL CUP SPARRING (INTERMEDIATE RANK)

Div#	Age	Rank	Gender
RCS-11	7-	Int.	M
RCS-12	7-	Int.	F
RCS-13	8-9	Int.	M
RCS-14	8-9	Int.	F
RCS-15	10-11	Int.	M
RCS-16	10-11	Int.	F
RCS-17	12-13	Int.	M
RCS-18	12-13	Int.	F
RCS-19	14-17	Int.	M
RCS-20	14-17	Int.	F



## ROYAL CUP CREATIVE WEAPONS (ADVANCE RANK)

Div#	Age	Rank	Gender
RCCW-19	7-	Adv.	M/F
RCCW-20	8-9	Adv.	M/F
RCCW-21	10-11	Adv.	M/F
RCCW-22	12-13	Adv.	M/F
RCCW-23	14-15	Adv.	M/F
RCCW-24	16-17	Adv.	M/F
RCCW-25	18+	Adv.	M/F
RCCW-26	35+	Adv.	M/F
RCCW-27	50+	Adv.	M/F

## ROYAL CUP SPARRING (ADVANCE RANK)

Div#	Age	Rank	Gender
RCS-21	7-	Adv.	M
RCS-22	7-	Adv.	F
RCS-23	8-9	Adv.	M
RCS-24	8-9	Adv.	F
RCS-25	10-11	Adv.	M
RCS-26	10-11	Adv.	F
RCS-27	12-13	Adv.	M
RCS-28	12-13	Adv.	F
RCS-29	14-17	Adv.	M
RCS-30	14-17	Adv.	F

## ROYAL CUP CREATIVE WEAPONS (BLACK BELT RANK)

Div#	Age	Rank	Gender
RCCW-28	7-	Blk.	M/F
RCCW-29	8-9	Blk.	M/F
RCCW-30	10-11	Blk.	M/F
RCWC-31	12-13	Blk.	M/F
RCCW-32	14-15	Blk.	M/F
RCCW-33	16-17	Blk.	M/F
RCCW-34	18+	Blk.	M/F
RCCW-35	35+	Blk.	M/F
RCWC-36	50+	Blk.	M/F

## ROYAL CUP SPARRING (BLACK BELT RANK)

Div#	Age	Rank	Gender
RCS-31	7-	Blk.	M
RCS-32	7-	Blk.	F
RCS-33	8-9	Blk.	M
RCS-34	8-9	Blk.	F
RCS-35	10-11	Blk.	M
RCS-36	10-11	Blk.	F
RCS-37	12-13	Blk.	M
RCS-38	12-13	Blk.	F
RCS-39	14-17	Blk.	M
RCS-40	14-17	Blk.	F





# Kata Divisions

## TRADITIONAL KATA

Div#	Age	Style	Rank	Gender
K-1	5-	All Styles	All Ranks	boys / girls
K-2	6-7	Ken/Kaju	Nov	boys / girls
K-3	6-7	Ken/Kaju	Int	boys / girls
K-4	6-7	Ken/Kaju	Adv/Blk	boys / girls
K-5	6-7	J/K/O/TKD	Nov	boys / girls
K-6	6-7	J/K/O/TKD	Int	boys / girls
K-7	6-7	J/K/O/TKD	Adv/Blk	boys / girls
K-8	8-9	Ken/Kaju	Nov	boys / girls
K-9	8-9	Ken/Kaju	Int	boys / girls
K-10	8-9	Ken/Kaju	Adv	boys / girls
K-11	8-9	Ken/Kaju	Blk	boys / girls
K-12	8-9	J/K/O/TKD	Nov	boys / girls
K-13	8-9	J/K/O/TKD	Int	boys / girls
K-14	8-9	J/K/O/TKD	Adv	boys / girls
K-15	8-9	J/K/O/TKD	Blk	boys / girls
K-16	10-11	Ken/Kaju	Nov	boys / girls
K-17	10-11	Ken/Kaju	Int	boys / girls
K-18	10-11	Ken/Kaju	Adv	boys / girls
K-19	10-11	Ken/Kaju	Blk	boys / girls
K-20	10-11	J/K/O/TKD	Nov	boys / girls
K-21	10-11	J/K/O/TKD	Int	boys / girls
K-22	10-11	J/K/O/TKD	Adv	boys / girls
K-23	10-11	J/K/O/TKD	Blk	boys / girls
K-24	12-13	Ken/Kaju	Nov	boys / girls
K-25	12-13	Ken/Kaju	Int	boys / girls
K-26	12-13	Ken/Kaju	Adv	boys / girls
K-27	12-13	Ken/Kaju	Blk	boys / girls
K-28	12-13	J/K/O/TKD	Nov	boys / girls
K-29	12-13	J/K/O/TKD	Int	boys / girls
K-30	12-13	J/K/O/TKD	Adv	boys / girls
K-31	12-13	J/K/O/TKD	Blk	boys / girls
K-32	14-15	Ken/Kaju	Nov	boys / girls
K-33	14-15	Ken/Kaju	Int	boys / girls
K-34	14-15	Ken/Kaju	Adv	boys / girls
K-35	14-15	Ken/Kaju	Blk	boys / girls
K-36	14-15	J/K/O/TKD	Nov	boys / girls
K-37	14-15	J/K/O/TKD	Int	boys / girls
K-38	14-15	J/K/O/TKD	Adv	boys / girls
K-39	14-15	J/K/O/TKD	Blk	boys / girls
K-40	16-17	Ken/Kaju	Nov	boys / girls
K-41	16-17	Ken/Kaju	Int	boys / girls
K-42	16-17	Ken/Kaju	Adv	boys / girls
K-43	16-17	Ken/Kaju	Blk	boys / girls
K-44	16-17	J/K/O/TKD	Nov	boys / girls
K-45	16-17	J/K/O/TKD	Int	boys / girls
K-46	16-17	J/K/O/TKD	Adv	boys / girls
K-47	16-17	J/K/O/TKD	Blk	boys / girls
K-48	18+	Ken/Kaju	Nov	Men / Women
K-49	18+	Ken/Kaju	Int	Men / Women
K-50	18+	Ken/Kaju	Adv	Men / Women
K-51	18+	Ken/Kaju	Blk	Men
K-52	18+	Ken/Kaju	Blk	Women
K-53	18+	J/K/O/TKD	Nov	Men / Women
K-54	18+	J/K/O/TKD	Int	Men / Women
K-55	18+	J/K/O/TKD	Adv	Men / Women
K-56	18+	Jap/Okinawan	Blk	Men
K-57	18+	Jap/Okinawan	Blk	Women
K-58	18+	Korean/TKD	Blk	Men
K-59	18+	Korean/TKD	Blk	Women
K-60	35+	Ken/Kaju	Nov	Men / Women
K-61	35+	Ken/Kaju	Int/Adv	Men / Women
K-62	35+	Ken/Kaju	Blk	Men / Women
K-63	35+	J/K/O/TKD	Nov	Men / Women
K-64	35+	J/K/O/TKD	Int/Adv	Men / Women
K-65	35+	Korean/TKD	Blk	Men / Women
K-66	35+	Jap/Okinawan	Blk	Men / Women
K-67	50+	Ken/Kaju	Blk	Men / Women
K-68	50+	Korean/TKD	Blk	Men / Women
K-69	50+	Jap/Okinawan	Blk	Men / Women

## TRADITIONAL WEAPON KATA

(NO MUSIC ALLOWED)

Div#	Age	Rank	Gender
W-1	7-	Nov	boys / girls
W-2	7-	Int	boys / girls
W-3	7-	Adv/Blk	boys / girls
W-4	8-9	Nov	boys / girls
W-5	8-9	Int	boys / girls
W-6	8-9	Adv	boys / girls
W-7	8-9	Blk	boys / girls
W-8	10-11	Nov	boys / girls
W-9	10-11	Int	boys / girls
W-10	10-11	Adv	boys / girls
W-11	10-11	Blk	boys / girls
W-12	12-13	Nov	boys / girls
W-13	12-13	Int	boys / girls
W-14	12-13	Adv	boys / girls
W-15	12-13	Blk	boys / girls

CONTINUED ON NEXT COLUMN

## TRADITIONAL WEAPON KATA

(NO MUSIC ALLOWED)

Div#	Age	Rank	Gender
W-16	14-15	Nov	boys / girls
W-17	14-15	Int	boys / girls
W-18	14-15	Adv	boys / girls
W-19	14-15	Blk	boys / girls
W-20	16-17	Nov	boys / girls
W-21	16-17	Int	boys / girls
W-22	16-17	Adv	boys / girls
W-23	16-17	Blk	boys / girls
W-24	18+	N/IIA	Men / Women
W-25	18+	Blk	Men
W-26	18+	Blk	Women
W-27	35+	Blk	Men / Women

## CREATIVE KATA

(NO TRADITIONAL KATAS ALLOWED OR MUSIC)

Div#	Age	Rank	Gender
C-1	7-	Nov	boys / girls
C-2	7-	Int	boys / girls
C-3	7-	Adv/Blk	boys / girls
C-4	8-9	Nov	boys / girls
C-5	8-9	Int	boys / girls
C-6	8-9	Adv	boys / girls
C-7	8-9	Blk	boys / girls
C-8	10-11	Nov	boys / girls
C-9	10-11	Int	boys / girls
C-10	10-11	Adv	boys / girls
C-11	10-11	Blk	boys / girls
C-12	12-13	Nov	boys / girls
C-13	12-13	Int	boys / girls
C-14	12-13	Adv	boys / girls
C-15	12-13	Blk	boys / girls
C-16	14-15	Nov	boys / girls
C-17	14-15	Int	boys / girls
C-18	14-15	Adv	boys / girls
C-19	14-15	Blk	boys / girls
C-20	16-17	Nov	boys / girls
C-21	16-17	Int	boys / girls
C-22	16-17	Adv	boys / girls
C-23	16-17	Blk	boys / girls
C-24	18+	N/IIA	Men / Women
C-25	18+	Blk	Men
C-26	18+	Blk	Women
C-27	35+	Blk	Men / Women

## MUSICAL CREATIVE KATA

(NO TRADITIONAL KATAS ALLOWED)

Div#	Age	Rank	Gender
MK-1	7-	Nov	boys / girls
MK-2	7-	Int	boys / girls
MK-3	7-	Adv/Blk	boys / girls
MK-4	8-9	Nov	boys / girls
MK-5	8-9	Int	boys / girls
MK-6	8-9	Adv	boys / girls
MK-7	8-9	Blk	boys / girls
MK-8	10-11	Nov	boys / girls
MK-9	10-11	Int	boys / girls
MK-10	10-11	Adv	boys / girls
MK-11	10-11	Blk	boys / girls
MK-12	12-13	Nov	boys / girls
MK-13	12-13	Int	boys / girls
MK-14	12-13	Adv	boys / girls
MK-15	12-13	Blk	boys / girls
MK-16	14-15	Nov	boys / girls
MK-17	14-15	Int	boys / girls
MK-18	14-15	Adv	boys / girls
MK-19	14-15	Blk	boys / girls
MK-20	16-17	Nov	boys / girls
MK-21	16-17	Int	boys / girls
MK-22	16-17	Adv	boys / girls
MK-23	16-17	Blk	boys / girls
MK-24	18+	N/IIA	Men / Women
MK-25	18+	Blk	Men
MK-26	18+	Blk	Women
MK-27	35+	Blk	Men / Women

## CREATIVE WEAPON KATA

(NO TRADITIONAL KATAS ALLOWED OR MUSIC)

Div#	Age	Rank	Gender
CW-1	7-	Nov	boys / girls
CW-2	7-	Int	boys / girls
CW-3	7-	Adv/Blk	boys / girls
CW-4	8-9	Nov	boys / girls
CW-5	8-9	Int	boys / girls
CW-6	8-9	Adv	boys / girls
CW-7	8-9	Blk	boys / girls
CW-8	10-11	Nov	boys / girls
CW-9	10-11	Int	boys / girls
CW-10	10-11	Adv	boys / girls
CW-11	10-11	Blk	boys / girls
CW-12	12-13	Nov	boys / girls
CW-13	12-13	Int	boys / girls
CW-14	12-13	Adv	boys / girls
CW-15	12-13	Blk	boys / girls
CW-16	14-15	Nov	boys / girls
CW-17	14-15	Int	boys / girls
CW-18	14-15	Adv	boys / girls
CW-19	14-15	Blk	boys / girls
CW-20	16-17	Nov	boys / girls
CW-21	16-17	Int	boys / girls
CW-22	16-17	Adv	boys / girls
CW-23	16-17	Blk	boys / girls
CW-24	18+	N/IIA	Men / Women
CW-25	18+	Blk	Men
CW-26	18+	Blk	Women
CW-27	35+	Blk	Men / Women

## MUSICAL CREATIVE WEAPON KATA

(NO TRADITIONAL KATAS ALLOWED)

Div#	Age	Rank	Gender
MW-1	7-	Nov	boys / girls
MW-2	7-	Int	boys / girls
MW-3	7-	Adv/Blk	boys / girls
MW-4	8-9	Nov	boys / girls
MW-5	8-9	Int	boys / girls
MW-6	8-9	Adv	boys / girls
MW-7	8-9	Blk	boys / girls
MW-8	10-11	Nov	boys / girls
MW-9	10-11	Int	boys / girls
MW-10	10-11	Adv	boys / girls
MW-11	10-11	Blk	boys / girls
MW-12	12-13	Nov	boys / girls
MW-13	12-13	Int	boys / girls
MW-14	12-13	Adv	boys / girls
MW-15	12-13	Blk	boys / girls
MW-16	14-15	Nov	boys / girls
MW-17	14-15	Int	boys / girls
MW-18	14-15	Adv	boys / girls
MW-19	14-15	Blk	boys / girls
MW-20	16-17	Nov	boys / girls
MW-21	16-17	Int	boys / girls
MW-22	16-17	Adv	boys / girls
MW-23	16-17	Blk	boys / girls
MW-24	18+	N/IIA	Men / Women
MW-25	18+	Blk	Men
MW-26	18+	Blk	Women
MW-27	35+	Blk	Men / Women

### Belt Division Breakdown

Nov: White, Yellow, Gold, Orange  
 Int: Purple, Blue, Green  
 Adv: Red, Brown  
 Blk: Black

First Time Divisions are design for competitors that have 1 year or less of training,

**No Exceptions!**

For more information  
 Please visit us at:  
[www.theleaguema.com](http://www.theleaguema.com)

# Sparring Divisions

ALL DIVISIONS BELOW ARE  
PRE-REGISTRATION ONLY  
NO AT THE DOOR REGISTRATIONS.

## SYNCHRONIZED TEAM KATA

Div#	Age	Style	Rank	Gender
STK-1	9-	Trad.	All Ranks	M/F
STK-2	10-13	Trad.	All Ranks	M/F
STK-3	14-17	Trad.	All Ranks	M/F
STK-4	18+	Trad.	All Ranks	M/F
STK-5	9-	Crea.	All Ranks	M/F
STK-6	10-13	Crea.	All Ranks	M/F
STK-7	14-17	Crea.	All Ranks	M/F
STK-8	18+	Crea.	All Ranks	M/F

## SELF-DEFENSE Traditional & Choreographed

Div#	Age	Style	Rank	Gender
SD-1	17-	Trad.	All Ranks	boys / girls
SD-2	18+	Trad.	All Ranks	boys / girls
SD-3	17-	Choreo.	All Ranks	boys / girls
SD-4	18+	Choreo.	All Ranks	boys / girls

## FIRST TIME KATA

Div#	Age	Rank	Gender
FTK-1	7-	All Ranks	boys / girls
FTK-2	8-9	All Ranks	boys / girls
FTK-3	10-11	All Ranks	boys / girls

## FIRST TIME WEAPON KATA

Div#	Age	Rank	Gender
FTW-1	7-	All Ranks	boys / girls
FTW-2	8-9	All Ranks	boys / girls
FTW-3	10-11	All Ranks	boys / girls

## FIRST TIME CREATIVE / MUSICAL KATA

Div#	Age	Rank	Gender
FTC-1	7-	All Ranks	boys / girls
FTC-2	8-9	All Ranks	boys / girls
FTC-3	10-11	All Ranks	boys / girls

## FIRST TIME BOYS SPARRING

Div#	Age	Rank	Gender
FTB-1	7-	All Ranks	boys
FTB-2	8-9	All Ranks	boys
FTB-3	10-11	All Ranks	boys

## FIRST TIME GIRLS SPARRING

Div#	Age	Rank	Gender
FTG-1	7-	All Ranks	girls
FTG-2	8-9	All Ranks	girls
FTG-3	10-11	All Ranks	girls

## FLAG SPARRING

Div#	Age	Rank	Gender
FLAG-1	5-	All Ranks	boys / girls
FLAG-2A	6-7	All Ranks	girls
FLAG-2B	6-7	All Ranks	boys
FLAG-3A	8-9	All Ranks	girls
FLAG-3B	8-9	All Ranks	boys
FLAG-4A	10-11	All Ranks	girls
FLAG-4B	10-11	All Ranks	boys

## HANDI-CAPABLE DIVISIONS

Div#	Age	Style	Rank	Gender
HCD-1	7-	ALL	All Ranks	M/F
HCD-2	8-9	ALL	All Ranks	M/F
HCD-3	10-11	ALL	All Ranks	M/F
HCD-4	12-13	ALL	All Ranks	M/F
HCD-5	14-15	ALL	All Ranks	M/F
HCD-6	16-17	ALL	All Ranks	M/F
HCD-7	18+	ALL	All Ranks	M/F

## DEMO TEAM CHALLENGE DIVISION

Div#	Age	Style	Rank	Gender
DEMO-1	ALL	ALL	All Ranks	M/F

## BOYS POINT SPARRING

Div#	Age	Rank	Gender
BS-1	5-	All Ranks	boys
BS-2	6-7	Nov	boys
BS-3	6-7	Int	boys
BS-4	6-7	Adv/Blk	boys
BS-5	8-9	Nov	boys
BS-6	8-9	Int	boys
BS-7	8-9	Adv/Blk	boys
BS-8	10-11	Nov	boys
BS-9	10-11	Int	boys
BS-10	10-11	Adv	boys
BS-11	10-11	Blk	boys
BS-12	12-13	Nov	boys
BS-13	12-13	Int	boys
BS-14	12-13	Adv	boys
BS-15	12-13	Blk	boys
BS-16	14-15	Nov	boys
BS-17	14-15	Int	boys
BS-18	14-15	Adv	boys
BS-19	14-15	Blk	boys
BS-20	16-17	Nov	boys
BS-21	16-17	Int	boys
BS-22	16-17	Adv	boys
BS-23	16-17	Blk	boys

## GIRLS POINT SPARRING

Div#	Age	Rank	Gender
GS-1	5-	All Ranks	girls
GS-2	6-7	Nov	girls
GS-3	6-7	Int	girls
GS-4	6-7	Adv/Blk	girls
GS-5	8-9	Nov	girls
GS-6	8-9	Int	girls
GS-7	8-9	Adv/Blk	girls
GS-8	10-11	Nov	girls
GS-9	10-11	Int	girls
GS-10	10-11	Adv	girls
GS-11	10-11	Blk	girls
GS-12	12-13	Nov	girls
GS-13	12-13	Int	girls
GS-14	12-13	Adv	girls
GS-15	12-13	Blk	girls
GS-16	14-15	Nov	girls
GS-17	14-15	Int	girls
GS-18	14-15	Adv	girls
GS-19	14-15	Blk	girls
GS-20	16-17	Nov	girls
GS-21	16-17	Int	girls
GS-22	16-17	Adv	girls
GS-23	16-17	Blk	girls

## LEAGUE OPEN WEIGHT/OPEN RANK POINT SPARRING

Div#	Age	Gender
OWB-1:	7yrs-	Boys
OWB-2:	8-9yrs	Boys
OWB-3:	10-11yrs	Boys
OWB-4:	12-13yrs	Boys
OWB-5:	14-17yrs	Boys
OWG-1:	7-yrs	Girls
OWG-2:	8-9yrs	Girls
OWG-3:	10-11yrs	Girls
OWG-4:	12-13yrs	Girls
OWG-5:	14-17yrs	Girls

**Our Policy: No Refunds.** Double check your divisional entries. The Promoter is not responsible for divisional entry errors. Once registered, No refunds or division switching. Please don't ask. UNDER ANY CIRCUMSTANCES.

**Tournament Start Time:** The tournament will start on time. It is your responsibility to be available for all your divisions at their correct rings when they begin. All division numbers will be announced. Very Important please pay attention to your ring assignments.

**Pre Registered Players:** Upon arrival to the tournament, please check in at **pre registration area** to receive your Competitor, spectator, coaches and/or officials entry passes/bands fastened by our staff. Your spectators and coaches must be present to receive their bands upon check in. Thank you.

**Weight Preference Divisions:** Any competitor competing in continuous sparring, also in Adult Black Belt point sparring divisions: **MUST** weigh-in at ringside check in. There will Positively be **NO pound/kilo or ounce allowances given.**

## MEN ADULT POINT SPARRING

Div#	Age	lbs.	Rank	Gender
MS-1	18+	All Weights	Nov	Mens
MS-2	18+	All Weights	Int	Mens
MS-3	18+	All Weights	Adv	Mens
MS-4	18+	145-	Blk	Mens
MS-5	18+	146-165	Blk	Mens
MS-6	18+	166-179	Blk	Mens
MS-7	18+	180+	Blk	Mens
MS-8	30+	165-	Blk	Mens
MS-9	30+	166+	Blk	Mens
MS-10	40+	165-	Blk	Mens
MS-11	40+	166+	Blk	Mens
MS-12	50+	165-	Blk	Mens
MS-13	50+	166+	Blk	Mens

## WOMEN ADULT POINT SPARRING

Div#	Age	lbs.	Rank	Gender
WS-1	18+	All Weights	Nov	Women
WS-2	18+	All Weights	Int	Women
WS-3	18+	All Weights	Adv	Women
WS-4	18+	129-	Blk	Women
WS-5	18+	130+	Blk	Women
WS-6	30+	129-	Blk	Women
WS-7	30+	130+	Blk	Women

## TAG TEAM SPARRING DIVISION

Div#	Age	Rank	Gender
TT-1	7-	ALL	(M/F)
TT-2	8-9	ALL	(M/F)
TT-3	10-11	ALL	(M/F)
TT-4	12-13	ALL	(M)
TT-5	12-13	ALL	(F)
TT-6	14-15	ALL	(M)
TT-7	14-15	ALL	(F)
TT-8	16-17	ALL	(M)
TT-9	16-17	ALL	(F)

**PLEASE READ CAREFULLY BEFORE SIGNING REGISTRATION FORM.**

## POLICY ALERT:

In all Sparring divisions, if there is only 1 competitor registered we will do our best to find someone to do an exhibition match.

Be aware there are no guarantees and we will not hold up any Divisions or Rings. If there is only 1 competitor in a division, it does NOT justify a REFUND, The competitor will receive an award for The LEAGUE FINALS.

**ABSOLUTELY NO EXCEPTIONS.**





# NEW VIP SEATING ON THE COMPETITION FLOOR



\*\*\*PHOTO OF CHAIR IS  
FOR ILLUSTRATION  
PURPOSES ONLY

## GET RIGHT UP NEXT TO THE RING

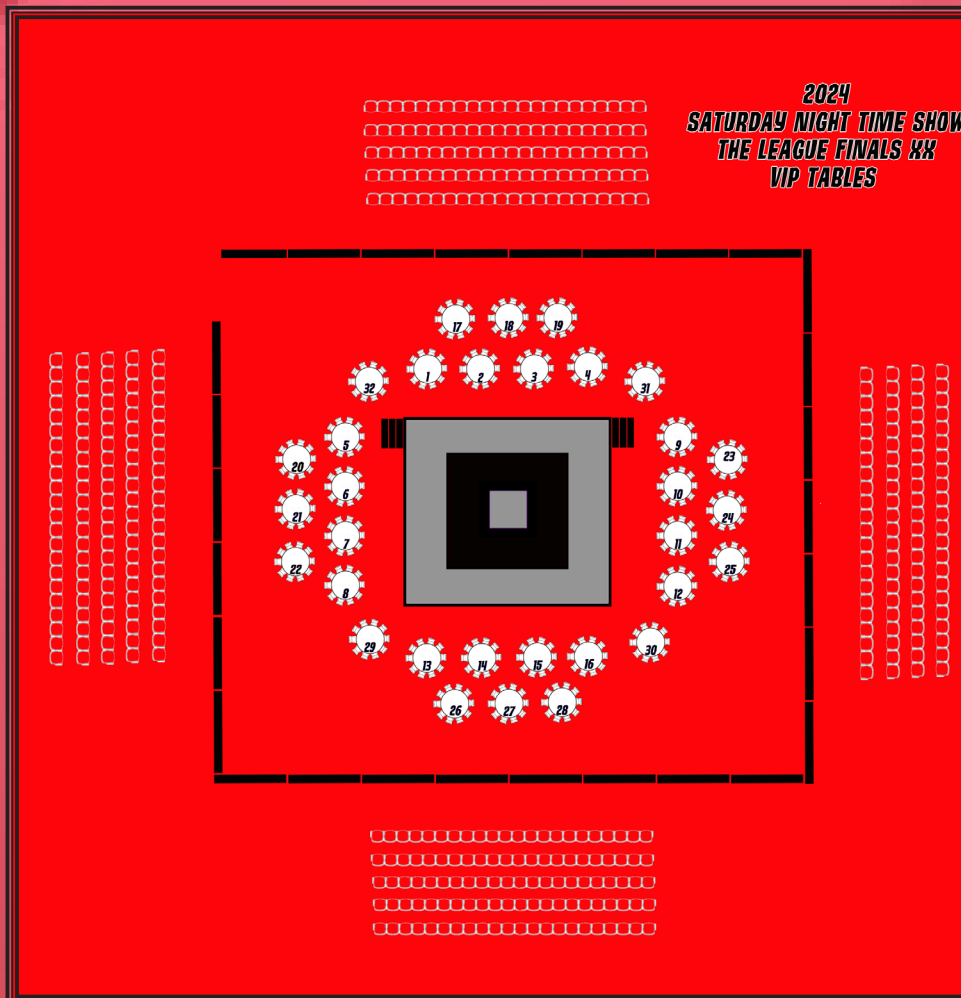
# *Saturday Night Time Finals*

## *VIP Seating*

### *Now Available*

*please contact us for more  
information on reserving your tables.*

**TONY.KATTENGELL@GMAIL.COM**





# ***JUNIOR BLACK BELT OVERALL GRAND CHAMPION DIVISIONS***

**Winners of the Divisions below compete for  
11& Under Traditional Black Belt  
Forms/Weapons  
K-11 K-15 K-19  
K-23 W-7 W-11**

**Winners of the Divisions below compete for  
11& Under Creative Black Belt  
Forms/Weapons  
C-7 C-11 MK-7  
MK-11 CW-7 CW-11**

**Winners of the Divisions below compete for  
12-13 Traditional Black Belt  
Forms/Weapons  
K-27 K-31 W-15**

**Winners of the Divisions below compete for  
12-13 Creative Black Belt  
Forms/Weapons  
C-15 MK-15 CW-15 MW-15**

**Winners of the Divisions below compete for  
14-15 Traditional Black Belt  
Forms/Weapons  
K-35 K-39 W-19**

**Winners of the Divisions below compete for  
14-15 Creative Black Belt  
Forms/Weapons  
C-19 MK-19 CW-19 MW-19**

**Winners of the Divisions below compete for  
16-17 Traditional Black Belt  
Forms/Weapons  
K-43 K-47 W-23**

**Winners of the Divisions below compete for  
16-17 Creative Black Belt  
Forms/Weapons  
C-23 MK-23 CW-23 MW-23**





Since 1912



IN ASSOCIATION WITH  
**KAJ** MEDIA GROUP

Winners of the Divisions below compete for  
**18+ & 30+ Combine Men's  
Black Belt Fighting**  
MS-4 MS-5 MS-6  
MS-7 MS-8 MS-9  
**\$250**

Winners of the Divisions below compete for  
**18+ Women's Black Belt  
Fighting**  
WS-4 WS-5  
WS-6 WS-7  
**\$250**

Winners of the Divisions below compete for  
**18+ Men's Traditional Black Belt  
Forms/Weapons**  
K-51 K-56  
K-58 W-25  
**\$250**

Winners of the Divisions below compete for  
**18+ Women's Traditional Black Belt  
Forms/Weapons**  
K-52 K-57  
K-59 W-25B  
**\$250**

Winners of the Divisions below compete for  
**18+ Men's Creative Black Belt  
Forms/Weapons**  
C-25 MK-25  
CW-25 MW-25  
**\$250**

Winners of the Divisions below compete for  
**18+ Women's Creative Black Belt  
Forms/Weapons**  
C-25B MK-25B  
CW-25B MW-25B  
**\$250**



Winners of the Divisions below compete for  
**40+ & 50+ Combine Men's  
Black Belt Fighting**  
MS-10 MS-11  
MK-12 MS-13  
**\$250**



Winners of the Divisions below compete for  
**35+ M/F Traditional Black Belt  
Forms/Weapons**  
K-62 K-65 K-66 K-67  
K-68 K-69 W-26 W-27  
**\$250**

Winners of the Divisions below compete for  
**35+ M/F Creative Black Belt  
Forms/Weapons**  
C-26 C-27 MK-26 MK-27  
CW-26 CW-27 MW-26 MW-27  
**\$250**



# The LEAGUE FINALS XX ENROLLMENT FORM

## 1. COMPETITOR INFORMATION:

Last Name: \_\_\_\_\_ First: \_\_\_\_\_ M/ F: \_\_\_\_\_  
 Weight: \_\_\_\_\_ Rank: (Circle) NOV INT ADV BLK  
 E-Mail: \_\_\_\_\_  
 Birthdate: mm / dd / yy Competition Age (as of 1/1/2024): \_\_\_\_\_  
 Address: \_\_\_\_\_ City: \_\_\_\_\_ ST: \_\_\_\_\_ Zip: \_\_\_\_\_  
 Home Ph: \_\_\_\_\_ - \_\_\_\_\_ - \_\_\_\_\_ Emergency Ph: \_\_\_\_\_ - \_\_\_\_\_ - \_\_\_\_\_  
 Instructor: \_\_\_\_\_ Team: \_\_\_\_\_  
 Dojo: \_\_\_\_\_ Dojo Ph: \_\_\_\_\_ - \_\_\_\_\_ - \_\_\_\_\_

## 2. LIST DIV #'S ENTERING:

1 \_\_\_\_\_  
 2 \_\_\_\_\_  
 3 \_\_\_\_\_  
 4 \_\_\_\_\_  
 5 \_\_\_\_\_  
 6 \_\_\_\_\_  
 7 \_\_\_\_\_  
 8 \_\_\_\_\_  
 9 Example- K-55

## Fees

**Aug. 1st At Door**

Each Division	\$100	\$150	_____ X \$ _____ = \$ _____
Tag Team Fighting	\$175	\$200	_____ X \$ _____ = \$ _____
2 Person Sync Forms	\$175	\$200	_____ X \$ _____ = \$ _____
Demo Teams	\$200	\$225	_____ X \$ _____ = \$ _____
Royal Cup Divisions <i>Pre Registration Only</i>	\$100	NO AT DOOR REG.	_____ X \$ _____ = \$ _____
NEW VIP Spectator PASS ( Limited Quantities )	\$75.00	(Allows you on the Competition Floor)	_____ X \$ _____ = \$ _____
Spectators For both days	\$65.00		_____ X \$ _____ = \$ _____
Coach Pass <i>( To coach your fighter you must purchase a Coach Pass NO EXCEPTIONS! ) ( IF CAUGHT WITHOUT A COACHES PASS THE FIGHTER WILL BE DISQUALIFIED )</i>	\$75.00		_____ X \$ _____ = \$ _____

*( To coach your fighter you must purchase a Coach Pass NO EXCEPTIONS! )  
( IF CAUGHT WITHOUT A COACHES PASS THE FIGHTER WILL BE DISQUALIFIED )  
HAVE ANY QUESTIONS CONTACT: TONY KATTENGELL*

TOTAL DUE = \$ \_\_\_\_\_

FILL IN WESTGATE RESORT HOTEL CONFIRMATION RESERVATION #: \_\_\_\_\_

"Competitors who do not list a Westgate Resort Hotel Confirmation Code and do not stay at the Westgate Resort will be applied an additional non-Resort participant penalty fee of \$75."

**NO REFUNDS UNDER ANY CIRCUMSTANCES!**

## 4. COMPETITORS & PARENTS PLEASE READ & SIGN BELOW

To be filled in by TLF Staff ONLY.

RCVD: \_\_\_\_\_ / \_\_\_\_\_ AMT: \$ \_\_\_\_\_ #: \_\_\_\_\_ Processed by \_\_\_\_\_

STAMP

I, hereby waive any and all rights or claims I may have against The WESTGATE Resort & Casino, The City of Las Vegas, NV., The LEAGUE, it's staff, vendor's, volunteers or Sponsors. All The LEAGUE Tournament Promoters, all The LEAGUE Sanctioned Tournaments, and all their agents, servants & employees, and I hereby release & discharge them from any and all claims resulting from injuries, including death, damages or loss, which may accrue to me or my heirs arising out of or in any way connected with my attendance &/or participation at any The LEAGUE sanctioned event. I represent and warrant that I am physically and mentally fit, able to participate, & I do hereby assume responsibility for my own well-being, understanding that participation involves bodily contact. I have read, understand and agree to abide by The LEAGUE rules associated with The LEAGUE events & assume all responsibility & any liability for infringement of such rules & agree to accept the tournament arbitrator's decision as final. I consent to allow any reproductions of me or likeness created in any manner whatsoever, photographed, filmed or video taped in connection with The LEAGUE events which can be used for instruction, publicity, promotion or television broadcast & I waive any & all compensation in regards thereto. I agree that I have obtained permission from the artist's of any music I use in conjunction with my competition & verify by signing this permission that in doing such, I will indemnify, defend & hold harmless all the above named parties from any liability for use of such music & that this artist's permission permits the above named parties to use such music in recorded performances of myself for instructional purposes, publicity, promotion, video &/or televised broadcast & I waive any & all compensation for such.

\*\*\*\* I UNDERSTAND BY SIGNING THIS WAIVER THAT UNDER ANY CIRCUMSTANCES THERE ARE NO REFUNDS.



PLEASE SIGN THIS WAIVER

\_\_\_\_\_/\_\_\_\_\_/2024  
DATE

Competitor or Parent/Guardian Signature Assuming responsibility if under 18

### 2024 THE LEAGUE FINALS Checklist - DID YOU:

- Fill in the correct division #'s @ BOX 2?  
( Double check! THE LEAGUE FINALS is not responsible for divisional entry errors. )
- Sign the release on this enrollment form?

**When payment by VENMO  
Please list competitor's Name and Division#**

ACCEPT ELECTRONIC PAYMENT TROUGH VENMO ACCOUNT:

@Theresa-RodriguezKattengell

*Special  
Registration Rates for  
Schools and Teams*

*with 20+ competitors competing in  
2 or more individual divisions,  
please contact us for more  
information at [tkattreg@gmail.com](mailto:tkattreg@gmail.com)*



# Referee/Staff Meetings Main Stage Area

Friday, August 30th, 2024 at 9:00 am      Saturday, August 31st, 2024 at 8:00 am

To Reserve an Officiating Chair in our League Finals XX for Traditional Katas,  
Creative/Extreme Katas, Point Sparring,  
please email Vice President Tony Kattengell at [tony@theleaguema.com](mailto:tony@theleaguema.com)  
Please make your commitments by August 1st, 2024 for Finals Officiating Training purposes.

If you are interested in being part of and certified for the LEAGUE FINALS XX staff, please email:  
Tony Kattengell before August 1st, 2024.

## Check In

1. Referee/Staff shirt and information packet.
2. Referee/Staff meeting Friday, August 30th at 9:00 am / Saturday, August 31st at 8:00 am
3. Snack/Refreshments will be provided at the event.

## Responsibilities

1. Referee/Staff meeting will be conducted on the main stage for Friday and Saturday morning
2. Referee/Staff will be pre-assigned to competition rings. please be on time at your assigned ring when competition begins.
3. Assigned back-up officials will be available to relieve other referee/staff if necessary.
4. Follow 2024 league rules and guidelines. discuss all issues with chief arbitrator.
5. Provide fair and absolute unbiased attention to the competitor.
6. Be present for the "Opening Ceremony" for officials introduction.
7. Referee/Staff must wear assigned attire outlined below.

## Dress Code & Etiquettes

1. Referee / Staff formal attire provided/outlined by the event coordinators.
2. Long dark pants or black gi pants ( no jeans or shorts please.)
3. Dark shoes please.
4. Unacceptable attire includes : Hats, Beannies, Sunglasses, Non-Referee Shirts,  
\*\*\*ESPECIALLY HOODIES\*\*\*
5. All referee will wear polo shirts and tuck in pants (NO EXCEPTIONS)

We would like to extend our appreciation to Staff, Scorekeepers, and Referees who donate their time and martial arts expertise throughout the 2024 League Season. The success of our League Finals XVIII is contingent upon capable Judges and Scorekeepers and Coordinators to yet again bring their knowledge and capability of the Rulebook to our Finals.

Thank you for your HARD WORK & LOYAL SUPPORT

# Coach / Instructor Pass Information

## Coaching:

1. Only one coach will be allowed in the coaching corner and they must show a coaching pass and wristband to access this area.  
(Coaches are only allowed on the floor when fighter is ready to fight, if caught not coaching a fighter your coach pass will be revoked.) **(NO EXCEPTIONS)**
2. All Coaches must pay for a Coach Pass to be allowed to coach.  
**( YOU HAVE ANY QUESTIONS CONTACT TONY KATTENGELL )**
3. For liability , Coaches are to be ADULTS at least 18 yrs of age, and only can coach their own school or team members. **(NO EXCEPTIONS, ADULTS ONLY CAN COACH)**  
**IF YOU HAVE ANY QUESTIONS PLEASE CONTACT TONY KATTENGELL**
4. A chair will be placed on two ends of the ring for coaches - one for each competitor's coach. The coach must remain seated, and moving the chair from its predetermined location in NOT ALLOWED.
5. Coaches must obey the referee's commands at all times. Failure to follow these rules may result in Penalty of the Competitor being coach!
6. Just to remind everyone, three penalties will result in Disqualification.
7. The following activities from a coach may result in a penalty:
  - \* **Arguing with the referee for any reason or about Scores**
  - \* **Failure to remain seated on chair at all times.**
  - \* **Moving of coaches chair.**
  - \* **Unsportsmanlike conduct by coaches or fighters may result in competitor disqualification.****(NO EXCEPTION) BE PROFESSIONAL PERIOD.**



**THE LEAGUE REGISTRATION WAIVER FORM  
FOR COACHES , INSTRUCTORS**

Last Name: \_\_\_\_\_ First: \_\_\_\_\_ M/ F: \_\_\_\_\_

E-Mail: \_\_\_\_\_

Birthdate: mm / dd / yyyy

Address: \_\_\_\_\_ City: \_\_\_\_\_ ST: \_\_\_\_\_ Zip: \_\_\_\_\_

Home Ph: \_\_\_\_\_ - \_\_\_\_\_ - \_\_\_\_\_ Emergency Ph: \_\_\_\_\_ - \_\_\_\_\_ - \_\_\_\_\_

Instructor: \_\_\_\_\_ Team: \_\_\_\_\_

School: \_\_\_\_\_ School Ph: \_\_\_\_\_ - \_\_\_\_\_ - \_\_\_\_\_

**PLEASE READ CAREFULLY BEFORE SIGNING**

I, hereby waive any and all rights or claims I may have against THE LEAGUE., It's staff, vendor's, volunteers or Sponsors. All THE LEAGUE Tournament Promoters, all THE LEAGUE Sanctioned Tournaments, and all their agents, servants & employees, and I hereby release & discharge them from any and all claims resulting from injuries, including death, damages or loss, which may accrue to me or my heirs arising out of or in any way connected with my attendance &/or participation at any THE LEAGUE sanctioned event. I represent and warrant that I am physically and mentally fit, able to participate, & I do hereby assume responsibility for my own well-being, understanding that participation involves bodily contact. I have read, understand and agree to abide by THE LEAGUE rules associated with THE LEAGUE events & assume all responsibility & any liability for infringement of such rules & agree to accept the tournament arbitrator's decision as final. I consent to allow any reproductions of me or likeness created in any manner whatsoever, photographed, filmed or video taped in connection with THE LEAGUE events which can be used for instruction, publicity, promotion or television broadcast & I waive any & all compensation in regards thereto. I agree that I have obtained permission form the artist's of any music I use in conjunction with my competition & verify by signing this permission that in doing such, I will indemnify, defend & hold harmless all the above named parties from any liability for use of such music & that this artist's permission permits the above named parties to use such music in recorded performances of myself for instructional purposes, publicity, promotion, video &/or televised broadcast & I waive any & all compensation for such.

**COACHES / INSTRUCTORS MUST SIGN THIS WAIVER**

Parent/Guardian Signature Assuming responsibility if under 18



# *WESTGATE RESORT & CASINO*

## *HOTEL RESERVATIONS*

*Rooms will sell out FAST! Don't wait until the last minute to reserve your Rooms for The League Finals!!*

**RESERVE YOUR ROOMS BY AUGUST 1st.**

### **PLEASE READ AND UNDERSTAND IMPORTANT NOTE :**

*Attendees MUST STAY at these RESORT CASINO Hotels or pay \$75.00 more per division when registering (except local attendees). The Resorts is a vital component to the success of the LEAGUE FINALS. We cannot provide the spacious venue for the tournament and the Family Amenities and Activities the Hotel offers without the support of our attendees staying at the hotel.*

*Online Link: <https://book.passkey.com/go/SLMAC4R>*

#### *Address:*

*3000 Paradise Road*

*Las Vegas, NV 89109*

*Phone Reservations: 702-732-5111*

*Group Code: SLMAC4R*

#### *Rates For The WESTGATE Signature Rooms:*

*\*Wednesday, Aug. 28th: \$135/night*

*\*Thursday, Aug. 29th: \$135/night*

*\*Friday, Aug. 30th: \$135/night*

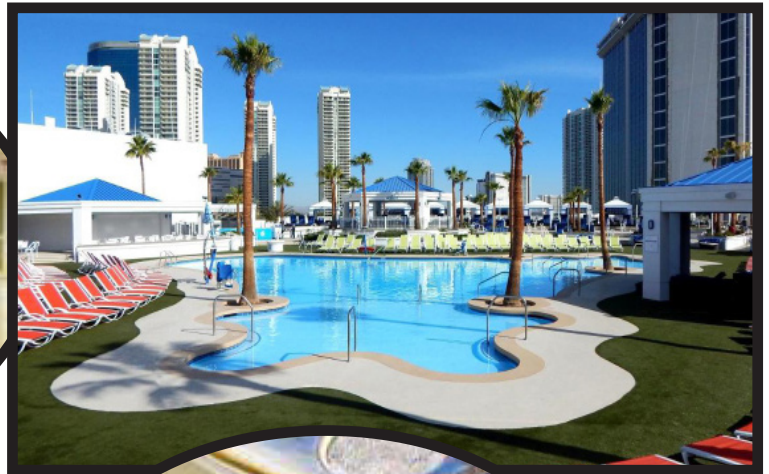
*\*Saturday, Aug. 31st: \$135/night*

*\*Sunday, Sept. 1st: \$135/night*

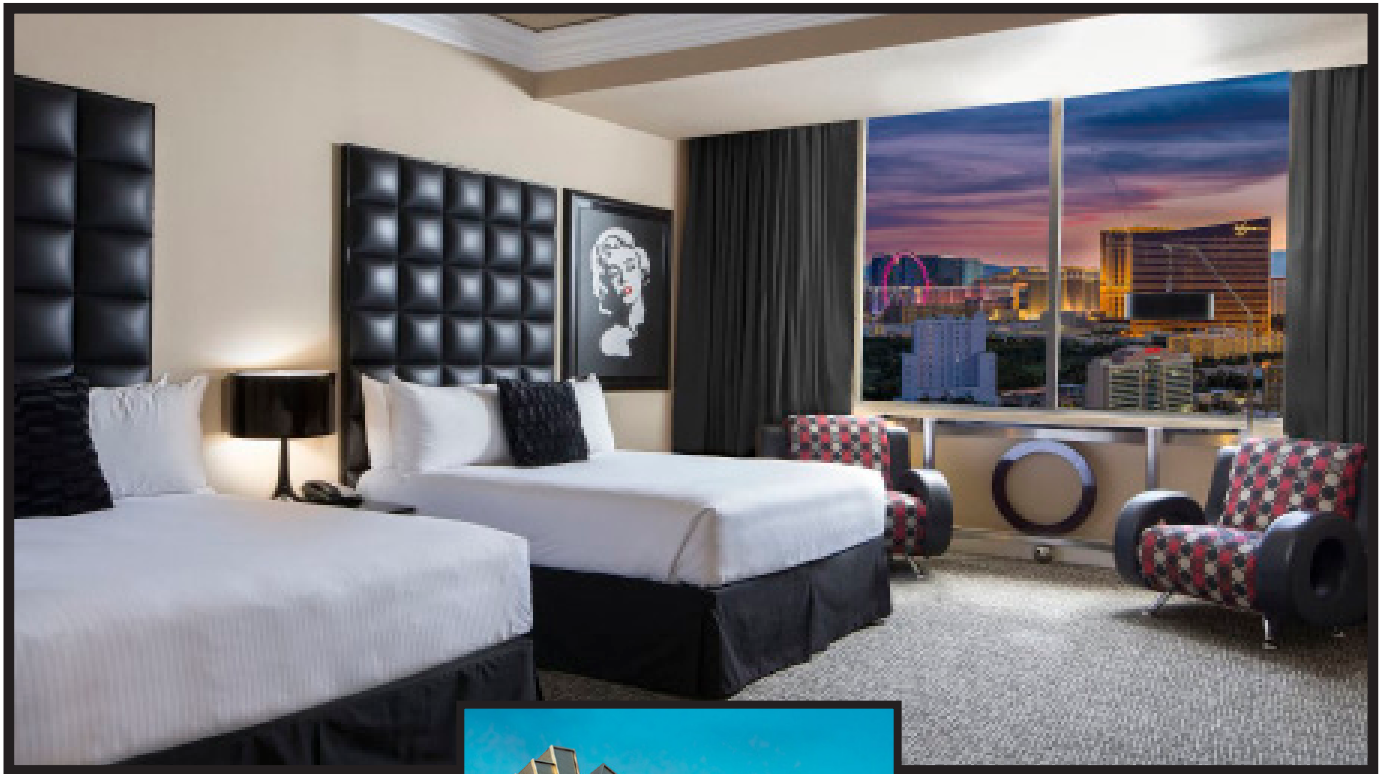


# About WESTGATE Resort Casino

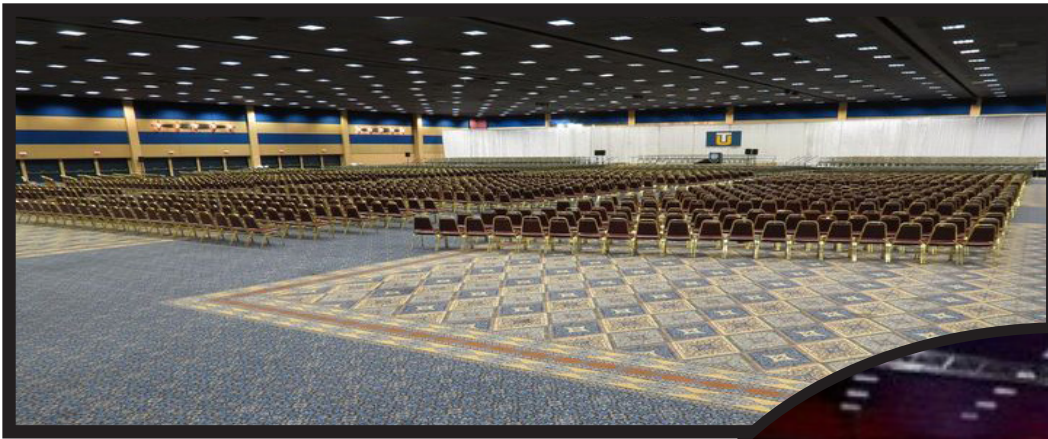
*Located adjacent to the Las Vegas Convention Center and just one block from the world-famous Las Vegas Strip, the Westgate Las Vegas Resort & Casino (formerly the Las Vegas Hilton) offers legendary entertainment and some of the most spacious rooms in Las Vegas. Enjoy the World's Largest Race & Sports Book, dine at the world-famous Benihana, Fresco Italiano, or the #1 rated restaurant in Las Vegas on Trip Advisor, Edge Steakhouse. The fun continues with iconic performers like Barry Manilow, in addition to a variety of Cabaret shows. Additionally, our resort has a Las Vegas Monorail stop onsite for easy access to the rest of the excitement on the Las Vegas Strip.*



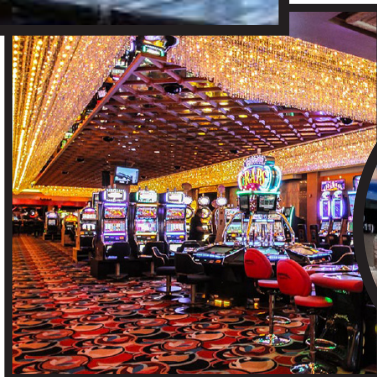
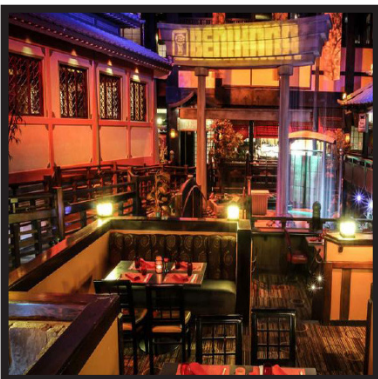
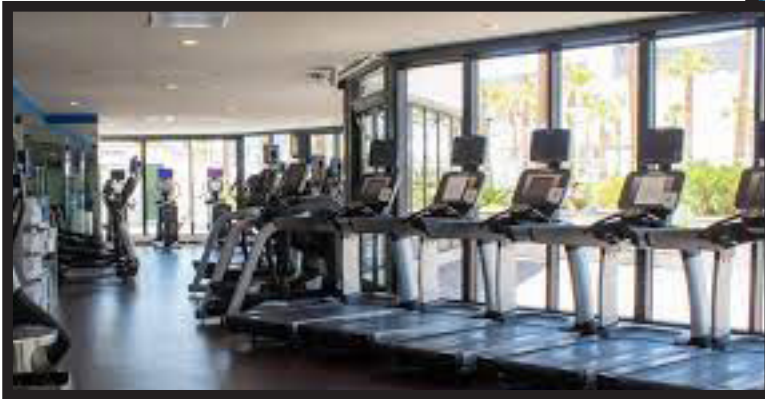












## **\*About Westgate Las Vegas Resort & Casino,**

**A legendary world-class destination, offers a unique blend of amenities and excitement with all your favorite table games, hottest slots on the market, incredible restaurants, endless entertainment, more than 225,000 square feet of meeting space and the world's largest race and sports SuperBook®. Westgate Las Vegas provides a range of culinary adventures with eight restaurants including the world-famous Benihana, the award-winning Edge Steakhouse and the newest addition Fresco Italiano. The property features entertainment options in the International Theater and the Westgate Cabaret. Westgate Las Vegas Resort & Casino is currently undergoing a \$100 million renovation that will encompass every square inch of the property including the addition of 300 timeshare villas, the all-new International Bar, a fully renovated pool deck, 1,200 remodeled Signature Rooms and more. For more information or to book accommodations, call toll free at (800) 732-7117 or log on to [WestgateVegas.com](http://WestgateVegas.com).**

## **\* Resort Fee Policy**

Unless stated otherwise or specifically defined, the mandatory nightly Resort Fee is not included in the nightly room rate. The nightly Resort Fee of \$30.00 + 13.38% tax is stated in the Taxes & Fees section, along with other applicable taxes and/or fees. The Resort Fee is charged per paid room night and includes the following items that are sure to enhance your stay: WiFi Access for up to 3 Devices, Fitness Center Access for 2 Adults, Scheduled Shuttle Service to and from the famous Las Vegas Strip and Downtown Fremont St, and Unlimited Local Calls.

## **\*Amenities**

--ALL GUESTROOMS- SUITES AND VILLAS ARE EQUIPPED WITH-- -ELECTRONIC KEY CARD ENTRANCE -PRIVATE BATHROOM -60-INCH TV OR LARGER -BLACK-OUT CURTAINS -SITTING CHAIR -TELEPHONE -ALARM CLOCK -SAFE -SOME ROOMS DOG FRIENDLY WITH FEES AND RESTRICTIONS

- |                             |   |                        |
|-----------------------------|---|------------------------|
| *Casino                     | *Wireless internet connection in public |                        |
| *Executive floor            | *Business center                        | *Coffee shop           |
| *Health club                | *Private bath or shower                 | *Jogging track         |
| *Kitchenette                | *Catering services                      | *Room service          |
| *High speed internet access | *Shops and commercial services          | *Tennis court          |
| *Golf                       | *Concierge desk                         | *Conference facilities |
| *Wedding services           | *Restaurant                             | *Valet parking         |