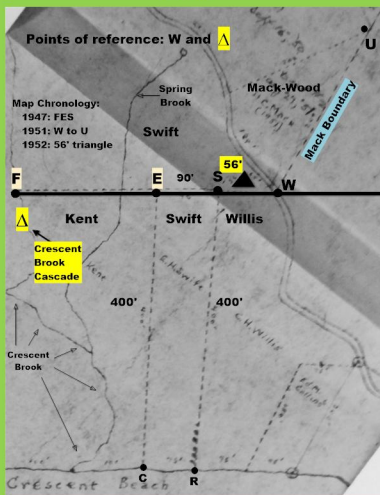


1967 Swift Map
FESW to U

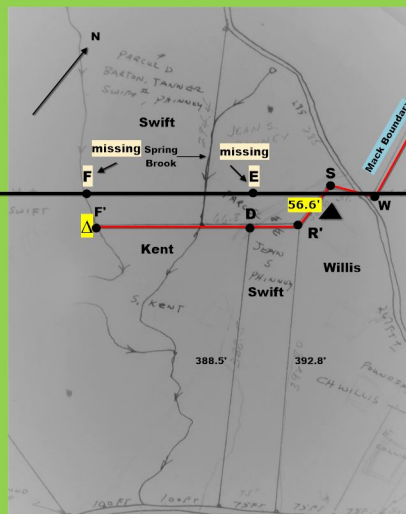


Significant Points:

- A triangle of land [56 feet on an edge] is above S.
- The 90' between S and E is very significant. S is present, but E is now missing. Presumably, two stakes are set in order to measure a distance.

The registered 1967 Swift map is identical to Emerson Swift's 1947 map which additionally shows the location of the Crescent Brook Cascade [Δ] the position of which is confirmed by the 2014 Horizons Engineering Survey.

1970 Brown Map
FDR' to SW to U

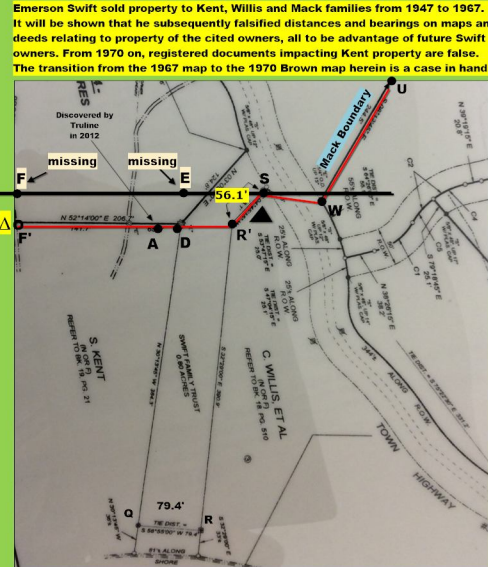


Significant Points:

- The triangle of land on the 1967 map is now below S.
- The 90 feet between S and E has disappeared.
- A new Kent boundary F'D has been created.

December 20, 2016

2004 Truline Map
FDR' to SW to U



Emerson Swift sold property to Kent, Willis and Mack families from 1947 to 1967. It will be shown that he subsequently falsified distances and bearings on maps and deeds relating to property of the cited owners, all to be advantage of future Swift owners. From 1970 on, registered documents impacting Kent property are false. The transition from the 1967 map to the 1970 Brown map herein is a case in hand.

Significant Points:

- The 1970 Brown Map is the root of all Truline maps: 2004, 2008, 2012 and 2014.
- If the 1970 map fails, all maps prepared for Swift Family Trust by Truline Land Surveyors must fail. Proofs follow.