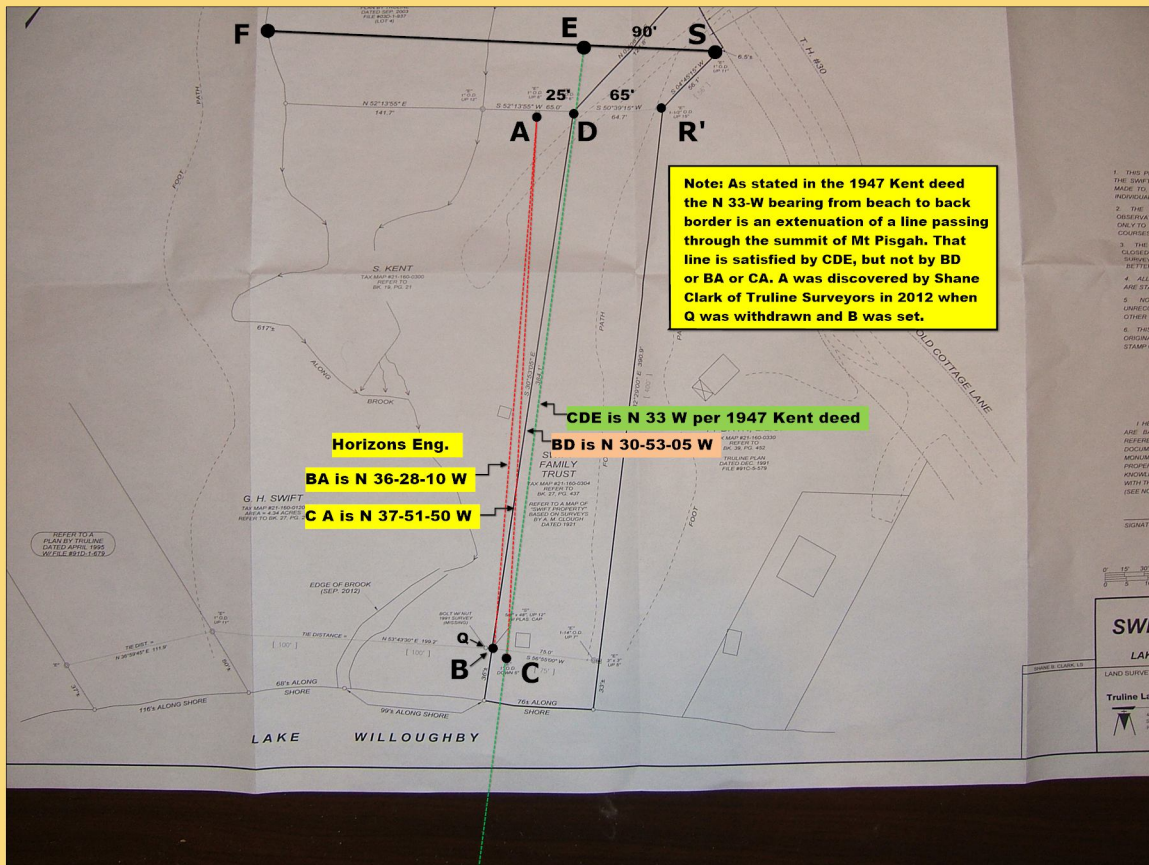
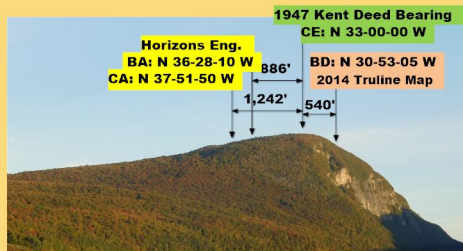


2014 Truline Map Bearing and Wedge Problems



Bearing Failure of the 2014 Truline Map



Arrow positions on Pisgah by compass are verified by lateral displacement in feet: $Q = [2\pi r \Delta] / 360$ where $r = 14,600$ feet and Δ is the difference in degrees between CE and BA, CA or BD. This data alone disqualifies the 2014 Truline map.

The 1947 Kent deed [Book 19, Page 21] states that N 33 W is an "extension of a line passing through the summit of Mt Pisgah" [a natural monument]. The N 33 W bearing in the Kent deed passes from the summit of Mt. Pisgah through C at the two cedar trees [a distance of 2.77 miles or 14,600 feet from Google Earth data] and on to Point E located between two boulders. All bearings on the 2014 Truline map fail to hit the summit.

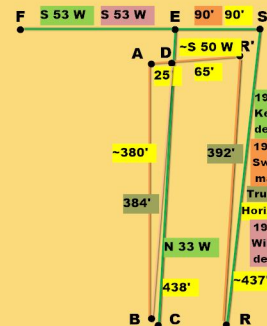
Wedge Failure of the 2014 Truline Map

This illustrates the failure of the BAR'R 'wedge' relative to CESR on the 1947 and 1967 Swift maps. The distance from A to R' is 90 feet compared to 90 feet between E and S, but A is disqualified. The BA bearing misses the summit of Mt Pisgah by 886 feet compared to the Kent CE which is dead on. Also, the Swift R'A bearing is S 50 W compared to the Kent deed bearing of S 53 W.

The Wedge Argument A Perfect Bearing Fit

The Wedge CESR' satisfies four criteria:

1. The 90-foot section on the 1947/67 Swift maps.
 2. Equidistant boundaries: CE = RS [1947/67 maps].
 3. CE bearing N 33 W
 4. SE bearing S 53 W
- #3 & #4 are 1947 Kent deed bearings. S 53 W is also the 1947 Willis deed back border bearing. The Swift wedge mimicry BAR'R is eliminated by A and the 90' AR' bearing of S 50 W. The BDR'R wedge is only 65' across the top. Finally, the Kent bearings CE N 33 W & SE S 53 W are perfect bearing fits, i.e., the bearing lines from S and C intersect at location E [stake E was missing after 1970].



Stake A must be Bogus

Shane Clark of Truline discovered A in 2012, claiming it to be the northeast most corner of the Kent property. A is disqualified for reasons given above. The 90-foot AR' length is thought to mimic the original ES length on the 1947 & 1967 Swift maps. A was probably set in the early 1970's as part of the subterfuge to lower the Kent back border from EF to DF'.