

Disputed Property and Monument Locations

Diagram 2

1947 Swift Map

Source: Emerson Swift's Notebook

Disputed Property



Plaintiffs Claim FEC.
Defendants Claim F'AB.

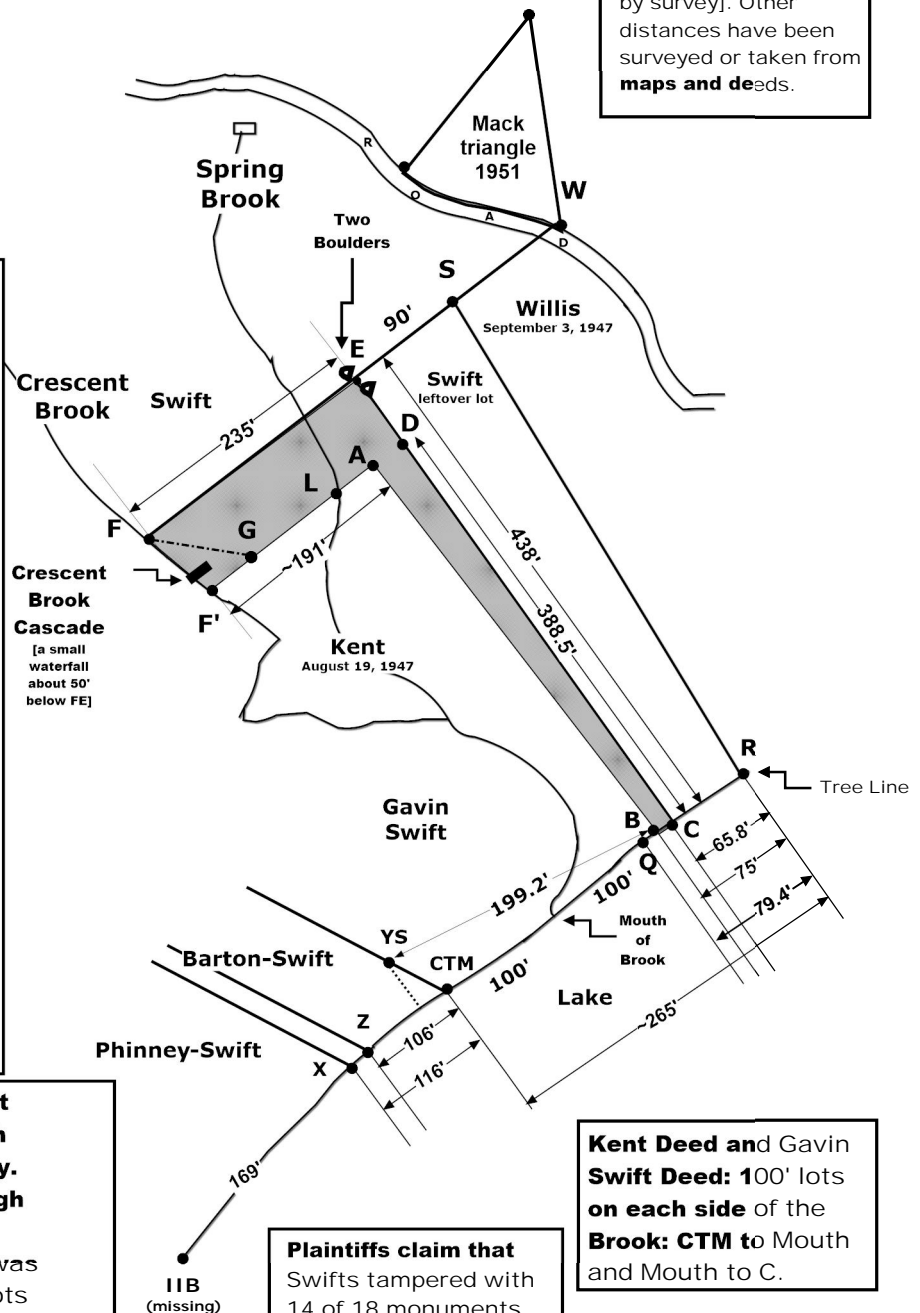
Defendants claimed D from 1971 to 2012. Stake Q was Protested by Plaintiffs and Eliminated in 2012. Subsequently, Shane Clark of Truline discovered A in 2012. Truline set B in 2012.

90 feet from E to S is the only correct distance on the 1947 Swift Map [confirmed by survey]. Other distances have been surveyed or taken from **maps and deeds**.

Chronology of Monument Placement

<1921 IIB [missing after 1990]
~1921 Z
~1921 CTM
1947 F [missing in 1971]
1947 E [missing in 1971]
1970 G [missing in 2013]
1947 S [undisputed]
1947 W [undisputed]
1947 C [under a 5" cedar root]
1947 R [undisputed]
1966 YS
~1966 X
1971 L
1971 D
1971 F'
1991 Q
2012 B
1988-2012 A
Stake A 'Discovered' in 20**12**

IIB was an "iron in a boulder" at the southwest end of the beach probably set in the 19th century. IIB was cited on the 1921 Clough Map and in 3 Swift deeds, the last of which was in 1990. IIB was a reference point for 3 beach lots to the brook. It disappeared sometime after 1990. Its absence is documented in a letter dated December 11, 2013 by surveyor Nathan Nadeau.



Plaintiffs claim that Swifts tampered with 14 of 18 monuments which were moved, removed, created, or ignored.

Kent Deed and Gavin Swift Deed: 100' lots on each side of the Brook: CTM to Mouth and Mouth to C.

Q was protested in 2012 and withdrawn by Defendants.