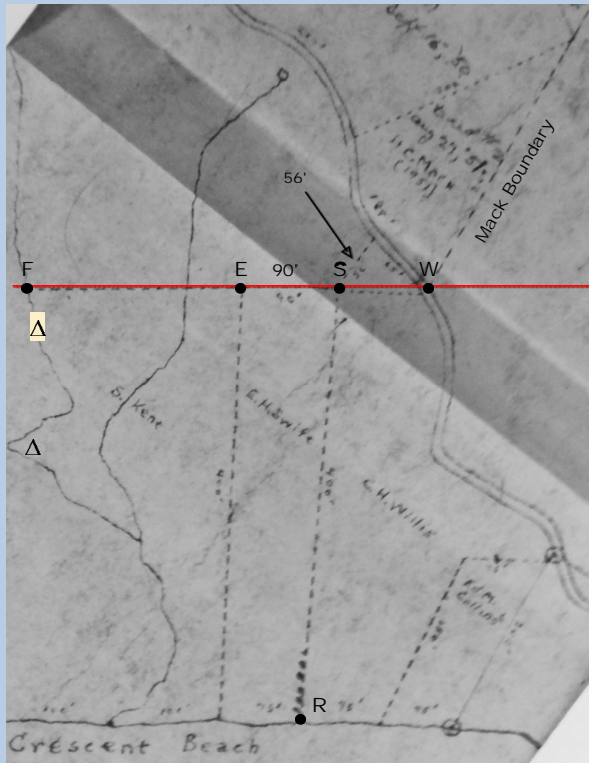


1967 Swift Map

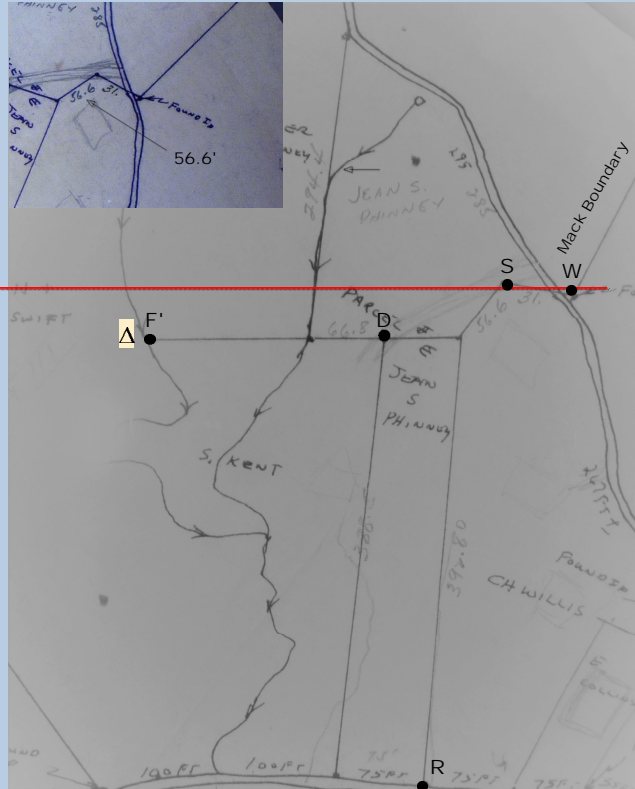
Compare

1970 Brown Map



Significant Points:

- Triangle is above S to W
- 90° between E and S
- Mack Boundary as reference point



Significant Points:

- Triangle is below S with peak at S
- 90° between E and S has disappeared
- Mack Boundary as reference point
- Kent Back Border changed from FE to F'D

Note: Emerson Swift's 1947 map shows the location of the Crescent Brook Cascade [△]. Confirmed by Horizons Survey.

File: 1967-1970 Maps Compared -- Kent Border changed from FE to F'D

16. Collection of Beach Diagrams>1967 Swift Map>Court Presentation>Revised Diagrams