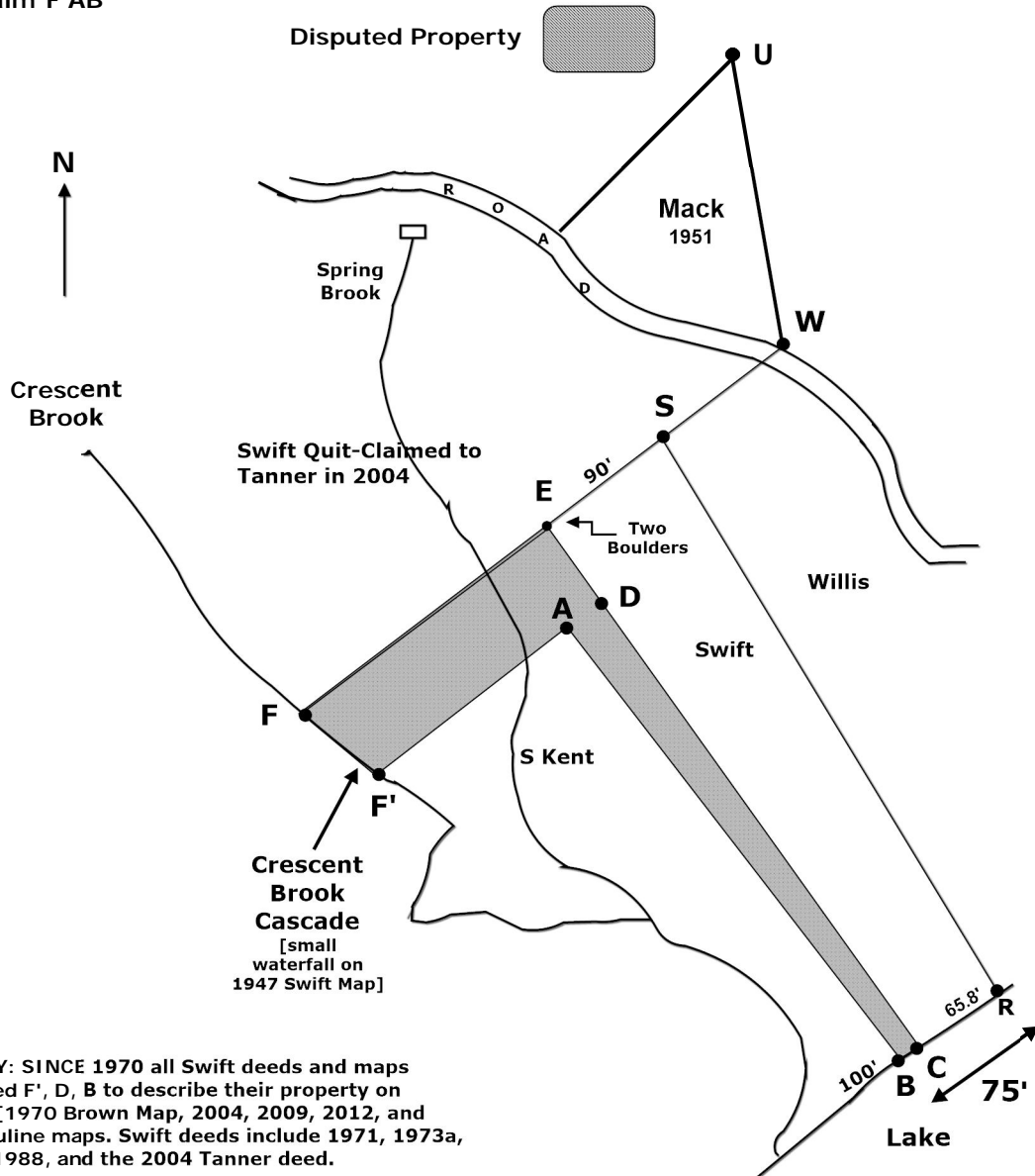


Disputed Property

Based on Emerson Swift's 1947 Map

Boundary Lines:
Kents claim FEC
Swifts claim F'AB



HISTORY: SINCE 1970 all Swift deeds and maps have used F', D, B to describe their property on 5 maps [1970 Brown Map, 2004, 2009, 2012, and 2014 Truline maps. Swift deeds include 1971, 1973a, 1973b, 1988, and the 2004 Tanner deed.

In 2012, Shane Clark, Swift's surveyor, discovered Pin A, and set Pin B 75' from Pin R [after Swifts retracted their claim of 81' which cut ~15' into the Kent beach frontage.] There has never been a Pin at location B.

File: Diagram 5 -- Disputed Property
16. Collection of Beach Diagrams 2-1947 Map
40. The Narrative