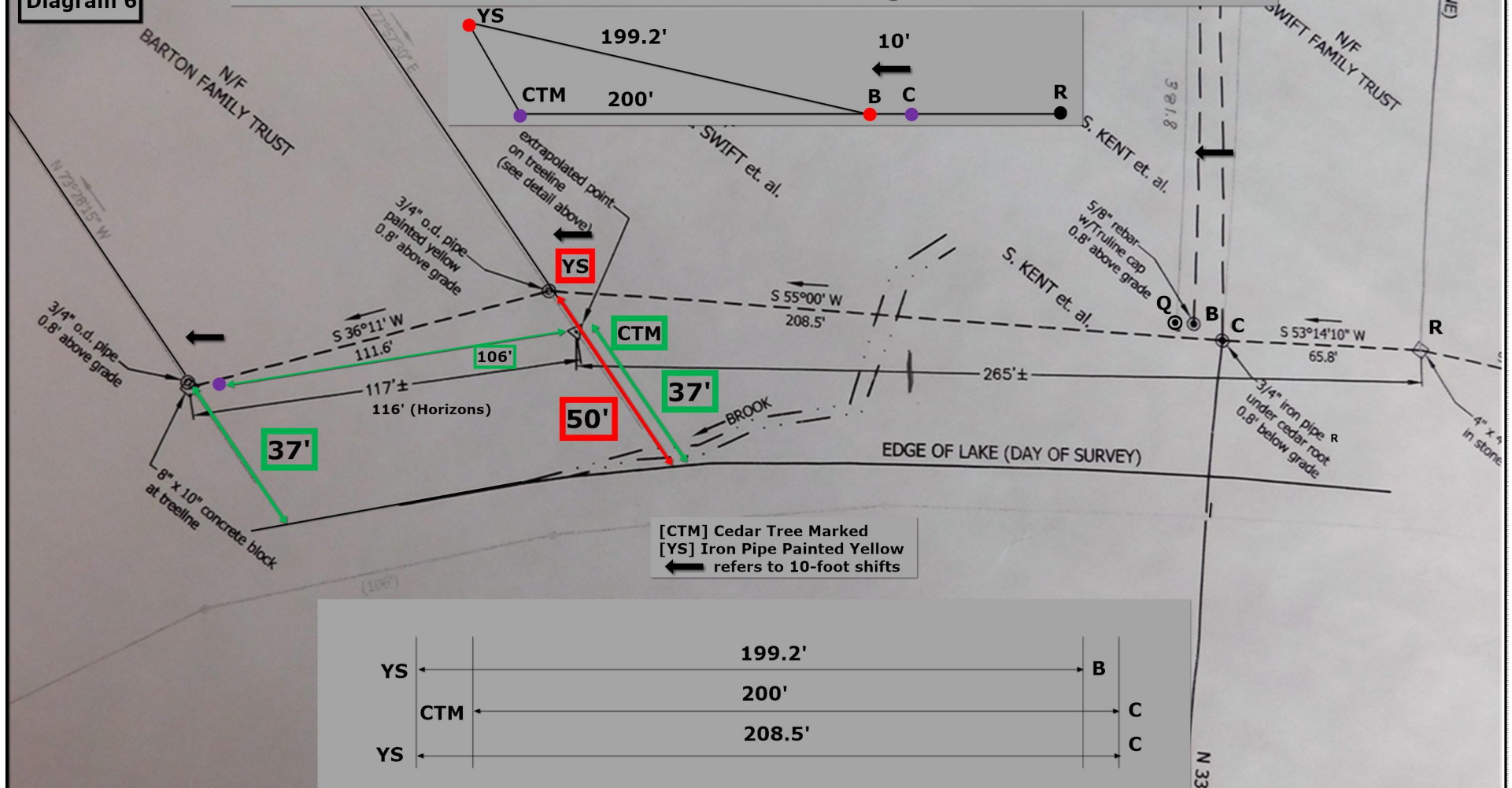


Diagram 6

How Swifts Planned to Increase Beach Frontage from 65 feet to 75 feet



Required: 100' lots on each side of the brook which is 200'. Swifts claim that YS to B of 199.2' satisfies the requirement and that 208.5' from YS to C leaves 10' from R to B for a 75' beach frontage. Kents claim 1) that both YS and B are bogus, 2) that CTM to C is the original 200', 3) YS is back in the woods, not on the tree line where the original lots were measured on the 1921 Map, 3) there are no cedar trees or remnants thereof at YS; therefore YS cannot be CTM 4) there is a cluster of cedars at CTM which is on the tree line, 5) YS is 50' from the lake shore, while the monuments on the tree line are 37', 6) five Swift deeds cite CTM as the boundary marker from 1941 to 1995; YS came into existence in 1966, 7) the CTM to R distance is ~265', 8) ~65' remains for the Swift beach, and 8) the surveyed distance from C to R in 65.8'. The Plaintiffs can also demonstrate that Swifts have manipulated 14 monuments over the last 50 years. Stake Q was the first bogus stake identified; Q would have cut 14 feet into the Kent beach.