

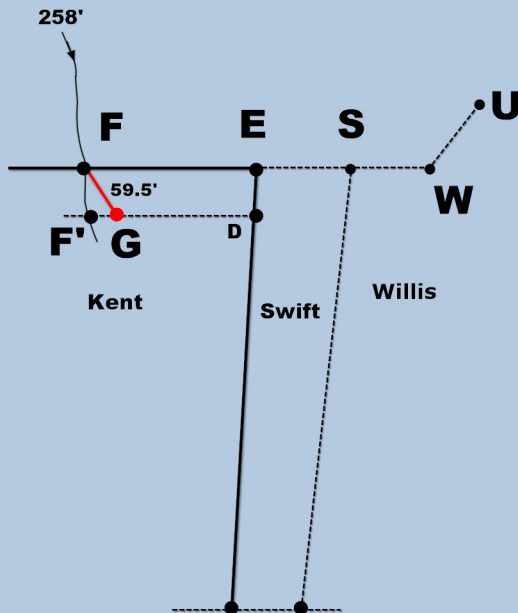
Monument G Reveals the Original Location of Stake F

The Incriminating Paragraph

"...thence from said iron pipe down the brook 258 feet and thence continuing in a straight line near and approximately parallel with said brook 59 and five-tenths feet to an iron pipe driven into the ground [Stake G], said iron pipe being South 59 degrees East from where said *last mentioned boundary line* [Stake F] leaves the brook" ... [parenthetical information and emphasis added]

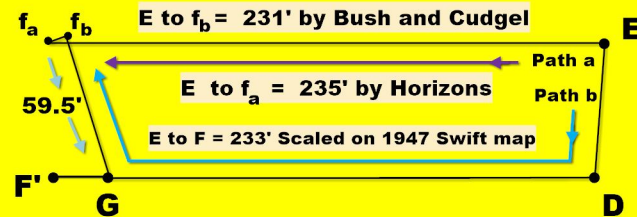
1970 Swift deed [Book 22, Page 291]

Outline of the 1967 Swift map



File: Diagram 3 – 1970 Swift Deed Reveals Location of F
16. Collection of Beach Diagrams 2-1947 Map

Two independent paths localize the original stake F



Using bearings and distances for ED [Horizons], DG and GF [Swift 1970 & 1971 deeds] the 1970 Swift deed [Book 22, 29'1] reveals that the Kent back border was deliberately lowered from EF to DF' in conjunction with the 1970 Brown map.

2015 Traverse by Travis Sanders of Bush and Gudgell, Inc., St George, Utah

Independent Measurements of F to E

EF = 235' from the Horizons Engineering Survey

EF = 233' scaled from the 1947 Swift map

EF = 231' from the 2015 Traverse by Bush and Gudgell, Inc. Travis Sanders
In the 1947 Kent Deed Emerson Swift reported "approximately 190 feet".

EF = 235'
Measured

EF = 233'
Scaled

The 1970 deed says that G "was set". Since the distance between F and G was 59.5 feet, F was probably present in 1970 to measure that distance to 3 significant figures and a tenth of a foot. Both stakes are missing in 2014, and the section referring to the 59.5' is missing in the 2004 Tanner deed.