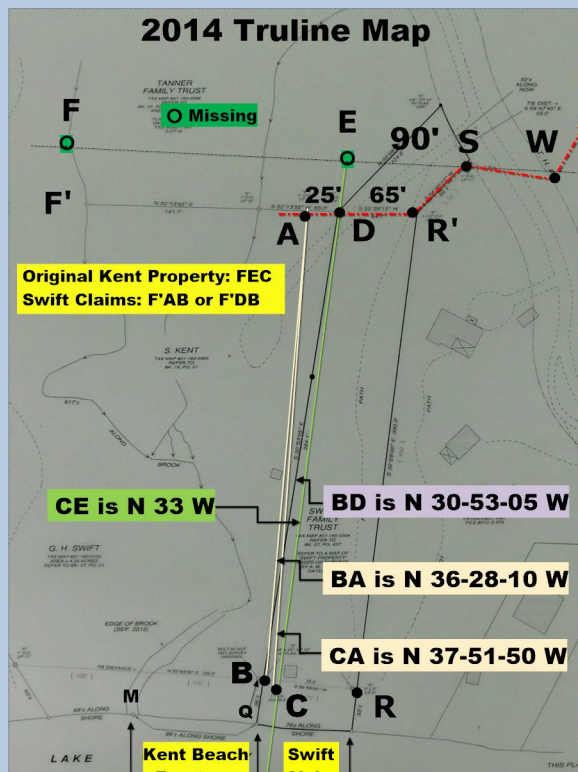


# Failed Bearings Invalidate the 2014 Truline Map

March 10, 2017

Category 2:  
Bearings



Summit of Mt Pisgah

Diagram 8 -- Bearing Failure  
16. Collection of Beach Diagrams February 2018 2-1947 Swift Map  
40. The Narrative

Method:

$$Q = \frac{2 \pi r \Delta}{360^\circ}$$

Where:

Q = Lateral Distance from Peak  
r = radius = 14,600 feet [beach to peak]  
 $\Delta$  = difference in degrees from CE

Arrow positions on Pisgah by compass are verified by lateral displacement in feet.

1947 Kent Deed Bearing CE: N 33-00-00 W

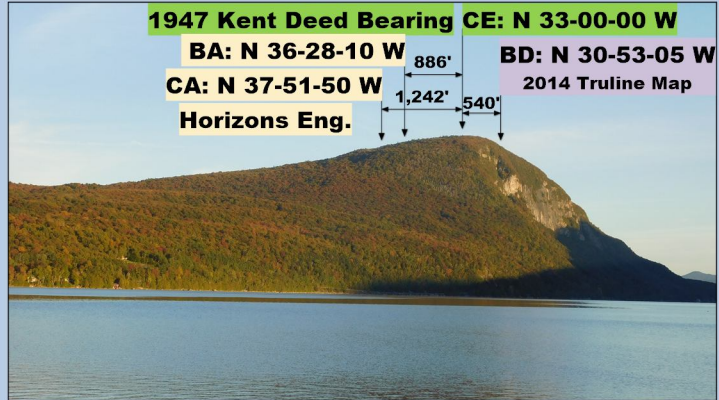
BA: N 36-28-10 W

BD: N 30-53-05 W

CA: N 37-51-50 W

2014 Truline Map

Horizons Eng.



The 1947 Kent deed [Book 19, Page 21] states that N 33 W is an "extenuation of a line passing through the summit of Mt Pisgah" [a natural monument]. The distance from C on the beach to the peak of Mt Pisgah is 2.77 miles or 14,600 feet [Google earth]. The 1947 Kent bearing is satisfied by CE but not by the 2014 Truline map bearings: CA, BA or BD. A was discovered by Shane Clark of Truline Surveyors in 2012 when Q was withdrawn and B was set. The severe bearing disqualification of A also renders invalid the 90-foot A to R mimicry on the 2014 Truline map [see left] of the 90 feet from S to E on the 1947 & 1967 Swift maps. A is bogus as is the 2014 Truline map.