

Finding: Flawed Bearings Invalidate the 2014 Truline Map.

Original Kent Property: FEC
Swift Claims: F'AB or F'DB

Failed 2014 Truline Map Bearings

Category 2 Bearings

February 3, 2017

Method:

Where:

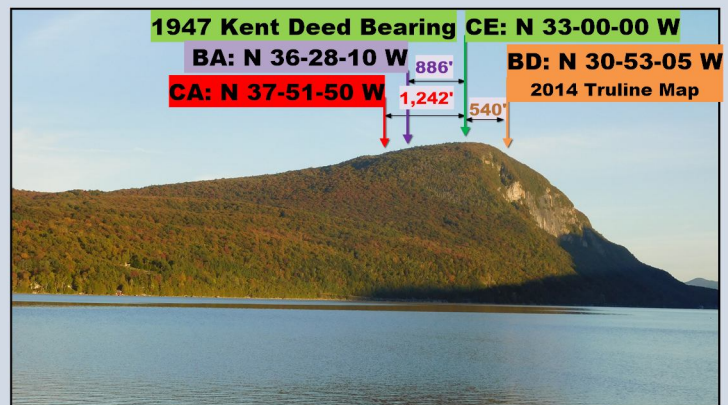
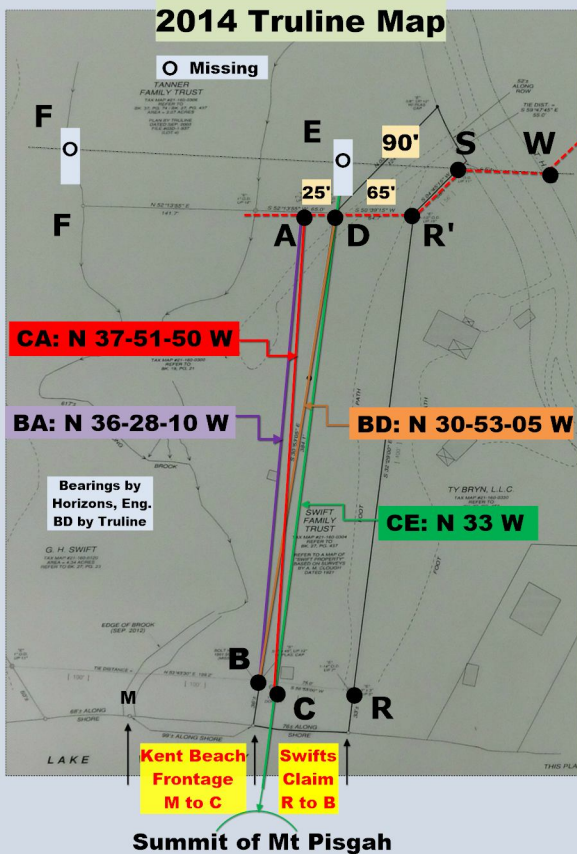
$$Q = \frac{2 \pi r \Delta}{360}$$

Q = Lateral Distance from Peak

r = radius = 14,626 feet

Δ = difference in degrees from CE

Arrow positions on Pisgah by compass are backed up by lateral displacement in feet.



The 1947 Kent deed states that N 33 W is an "extenuation of a line passing through the summit of Mt Pisgah." The distance from C at two cedar trees to the summit is 2.77 miles or 14,626 feet. The lateral distance from the peak of any other bearing may be calculated from the difference in degrees from the summit. All Truline map bearings [BD, BA, CA] fail. The severe disqualification of A also renders invalid the 90-foot A to R mimicry of the original 90-foot S to E distance on the 1967 Swift map.