

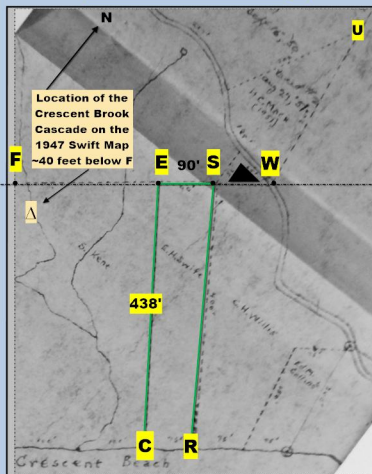
The Wedge Argument Invalidates the 1970 Brown and 2014 Truline Maps

Chronology
1947 FES Border
1951 WU Border
1952 Triangle

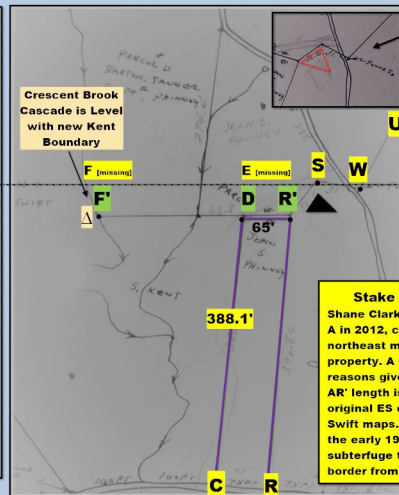
Wedge Failure of the 2014 Truline Map

This illustrates the failure of the BAR'R 'wedge' relative to CESR on the 1947 and 1967 Swift Maps. The distance from A to R' is 90 feet compared to 90 feet between E and S, but A is disqualified. The BA bearing misses the summit of Mt Pisgah by 886 feet compared to the Kent CE bearing which is dead on [1947 Kent deed]. The CA bearing misses the summit by 1,200 feet. The 2014 Truline Map is based on the 1970 Brown map which is invalidated [below].

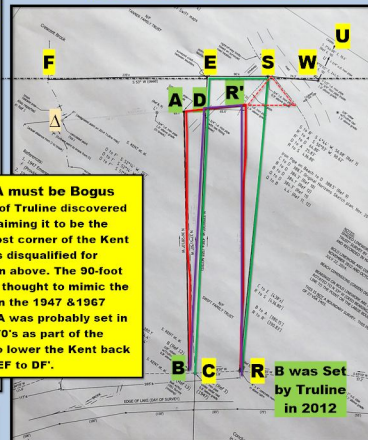
1947/1967 Swift Maps



1970 Brown Map



2017 Horizons Sketch



The Wedge Argument A Perfect Bearing Fit

The Wedge CESR' satisfies four criteria: (#1 is Primary)

1. The 90-foot section on the 1947/67 Swift maps.
2. Equidistant boundaries: CE = RS [1947/67 maps].
3. CE bearing N 33 W
4. SE bearing S 53 W

#3 & #4 are 1947 Kent deed bearings. S 53 W is also the 1947 Willis deed back border bearing. The Swift wedge mimicry BAR'R is eliminated by A and the 90' AR' bearing of S 50 W. The BDR'R wedge is only 65' across the top. Finally, the Kent bearings CE N 33 W & SE S 53 W are perfect bearing fits, i.e., the bearing lines from S and C intersect at location E [stake E was missing after 1970].

The Willis Triangle: In 1952 the triangle was wrongly placed above FES and in the public ROW [between S and W]. In 1970 the triangle was correctly placed below S on the 1970 Brown map. However, without justification the Kent back border FE was lowered with the triangle causing the present mess. The Swift 1947 & 1967 maps take precedence over the 1970 Brown map and correctly show the Kent back border from F to E. Emerson Swift's deliberate shortening of boundaries by 12.5% additionally confirms the 1967 map. Elimination of the Brown map nullifies ALL Truline maps and Swift deeds pertaining to Kent property as they are based on that map.