

Welcome



Thank you for attending tonight's open house for the Billings Urban Area Long Range Transportation Plan. The purpose of this open house is to give you an opportunity to learn about the plan, review technical information, and provide comments on transportation deficiencies that exist today.



Your Views Are Important! Please provide comments on the interactive map survey at www.billingslrtp.com.

WHO IS INVOLVED?



The primary sounding board is the Steering Committee, which includes representatives from the above agencies.

The consultant team for the project includes Kittelson & Associates, Inc. and DOWL.



What is a Long Range Transportation Plan (LRTP)?

The Billings-Yellowstone County Metropolitan Planning Organization (MPO) is preparing a long range transportation plan (LRTP) to address travel by people and goods and meet the local, state, and federal requirements. The plan is a blueprint to guide the development and implementation of transportation system projects for the Billings Urban Area.

MPOs are required to update their transportation plan every four to five years. The last plan for Billings was completed in 2018.

The LRTP includes:

- Planning for the next 20 years
- Engaging the public for input and comment
- Assessing facilities and operations of the different transportation modes
- Identifying transportation needs and a set of short- and long-range transportation projects
- Constraining the recommendations financially

LRTP TIMELINE



Fall 2022

Identify transportation needs and opportunities



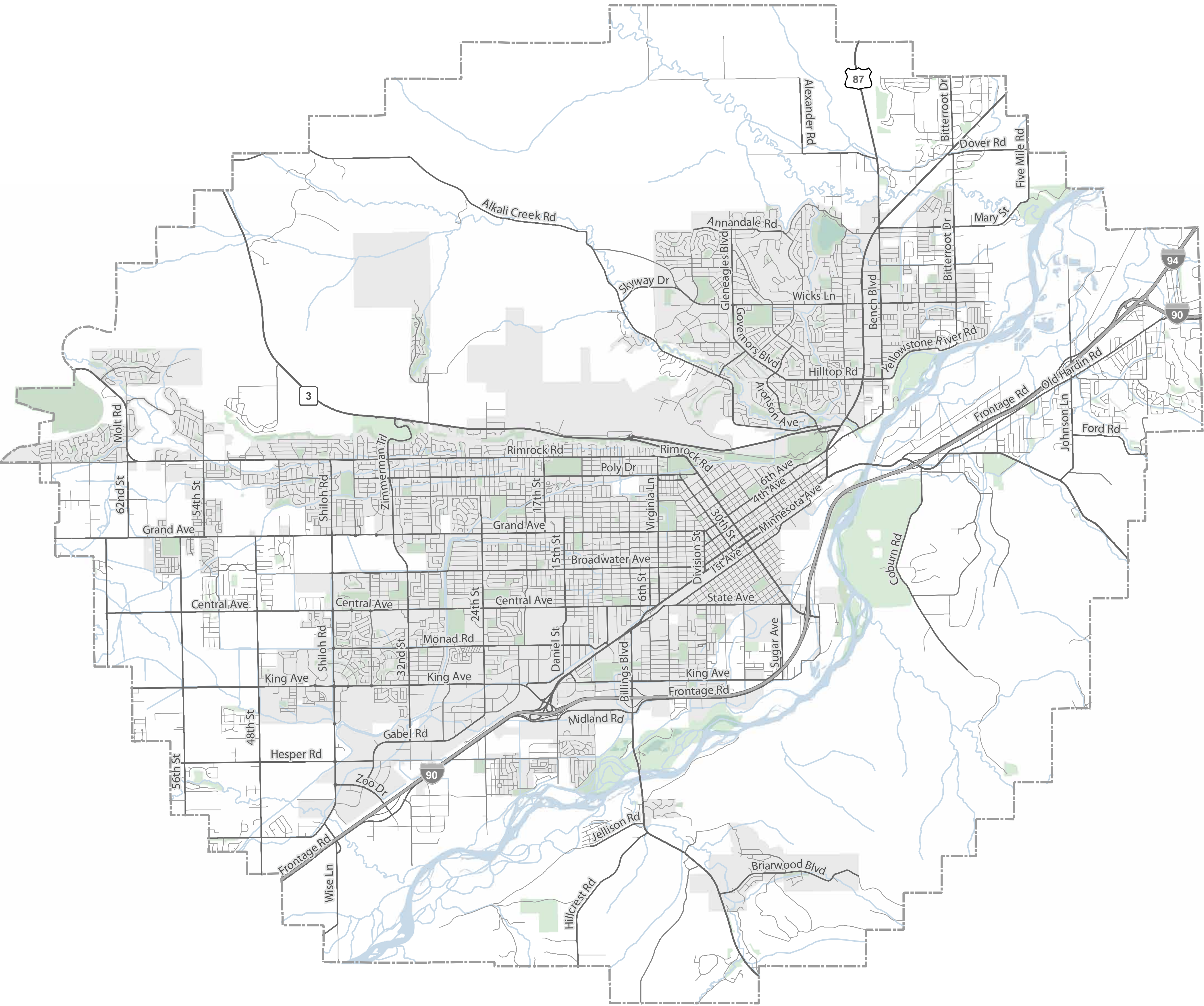
Winter 2023

Collect feedback on proposed projects and prioritization

Summer 2023

Final Plan Adoption

Planning Area



BILLINGS URBAN AREA



- MPO Boundary
- City of Billings Limits
- Park / Open Space
- Water

Data Sources: City of Billings, Yellowstone County

The Yellowstone County Planning Board is the designated Metropolitan Planning Organization (MPO) and oversees transportation planning for the Billings Urban Area. The area encompasses the City of Billings, Lockwood, and a planning area extending approximately 4.5 miles outside the City limits.

Vision & Goals for 2023 LRTP

VISION

Support a livable and economically vibrant community through a safer and more equitable multimodal transportation system.



Safety – Develop a safer transportation system for all users.



Resiliency – Optimize, preserve, and enhance the existing transportation system to adapt with climate change, protect the natural environment, and promote a healthy and sustainable community.



Mobility – Create a transportation system that supports the use of transit, walking, biking, shared mobility, and vehicles.

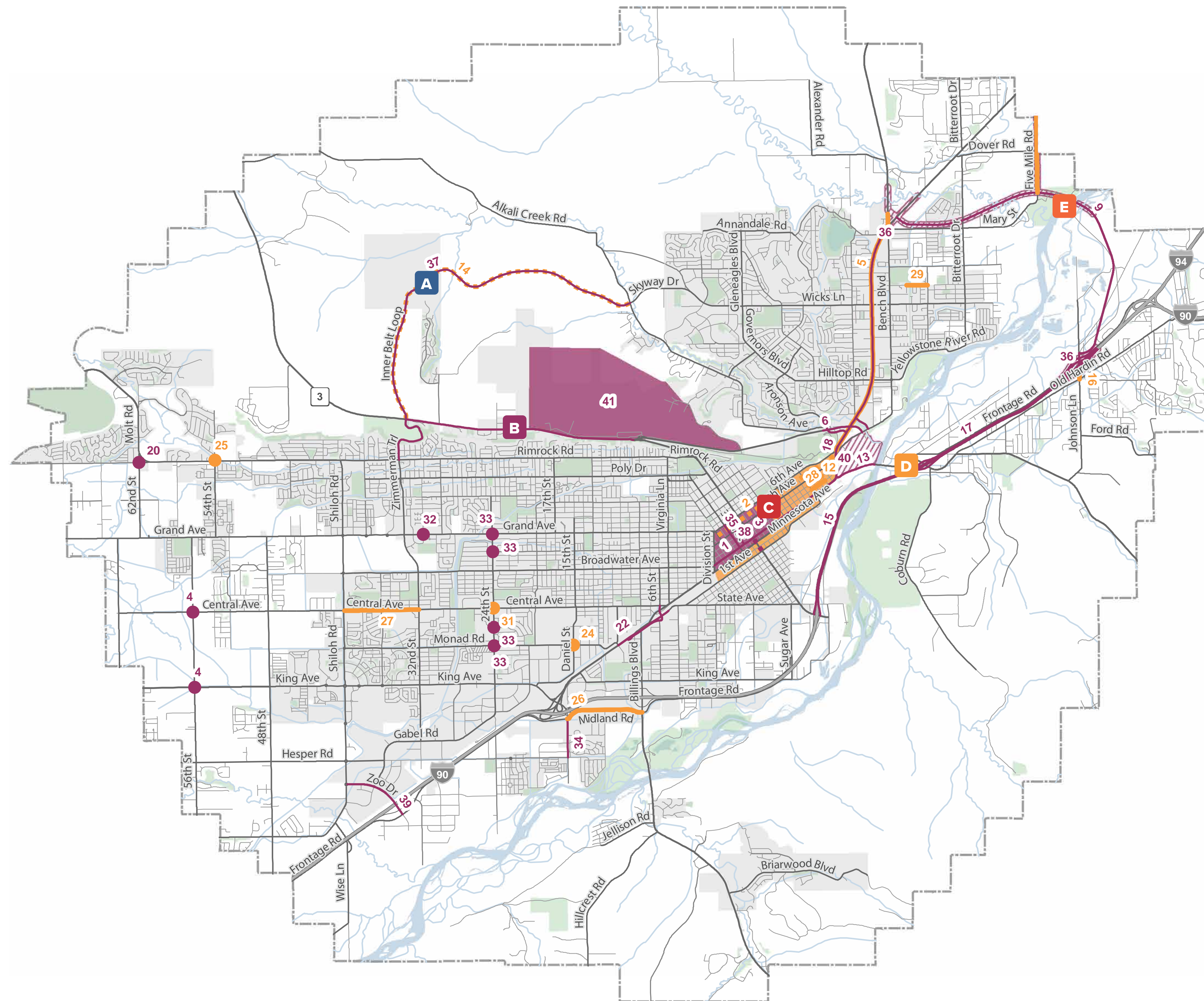


Equity & Accessibility – Address the needs of transportation-disadvantaged populations through the provision of affordable, accessible, and reliable travel options.



Economic Vitality – Provide transportation facilities to support the local economy and connect the Billings Urban Area to local, regional, and national commerce.

What Transportation Projects Have Been Completed Since the 2018 LRTP?



ONGOING AND RECENTLY COMPLETED PROJECTS, PLANS, AND STUDIES



- Completed Intersection Project
- On-Going Intersection Project
- Completed Project
- Completed Study/Plan
- On-Going Project
- On-Going Study/Plan
- Completed Study/Plan
- On-Going Project
- On-Going Study/Plan

Data Sources: City of Billings, Yellowstone County, Montana Department of Transportation

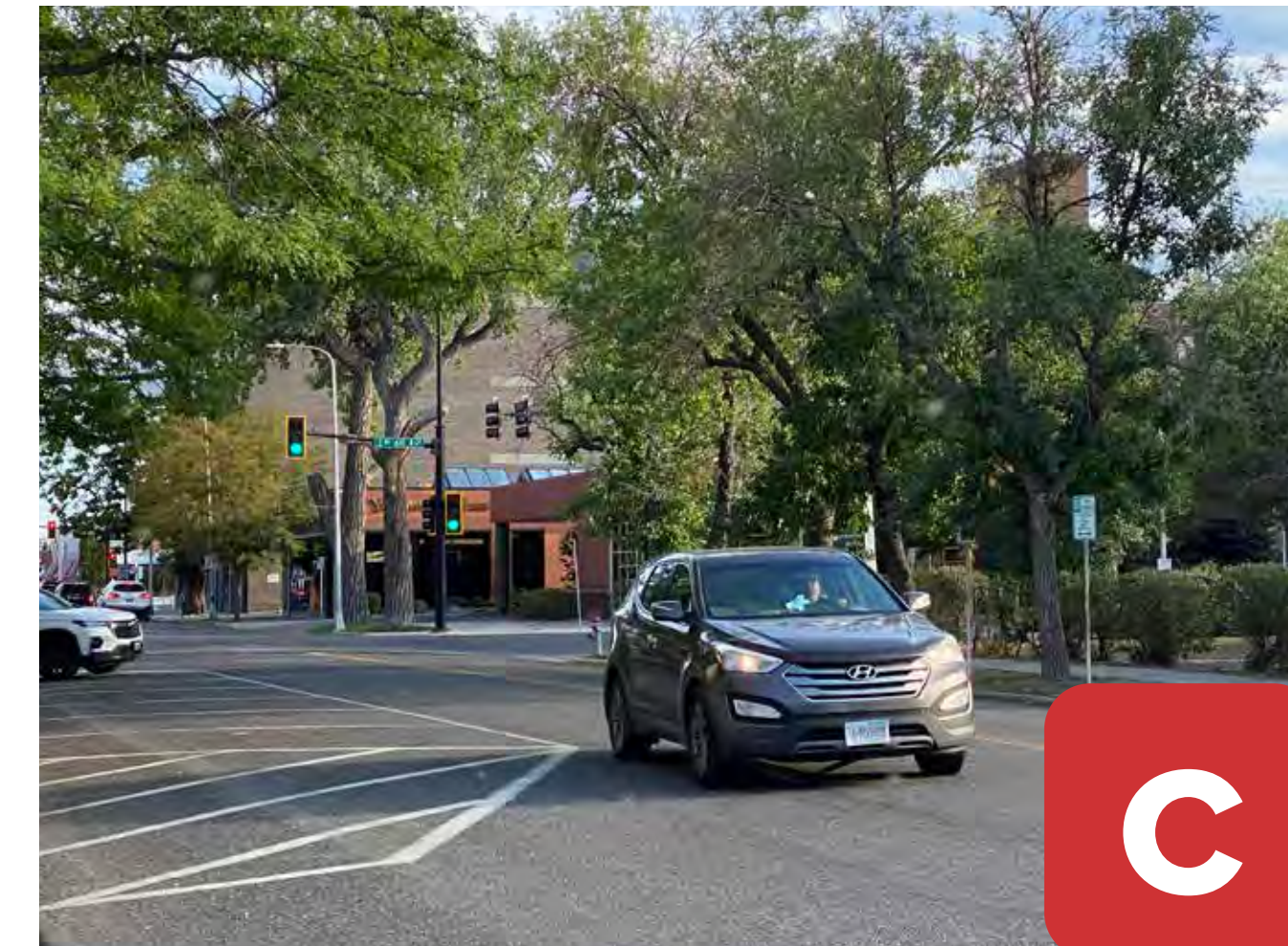
Since the 2018 LRTP was completed, the City of Billings, of Billings, Yellowstone County, Montana Department of Transportation, and Lockwood have completed or have continued work on many projects, which are identified on the map.

Transformational Projects in the Region

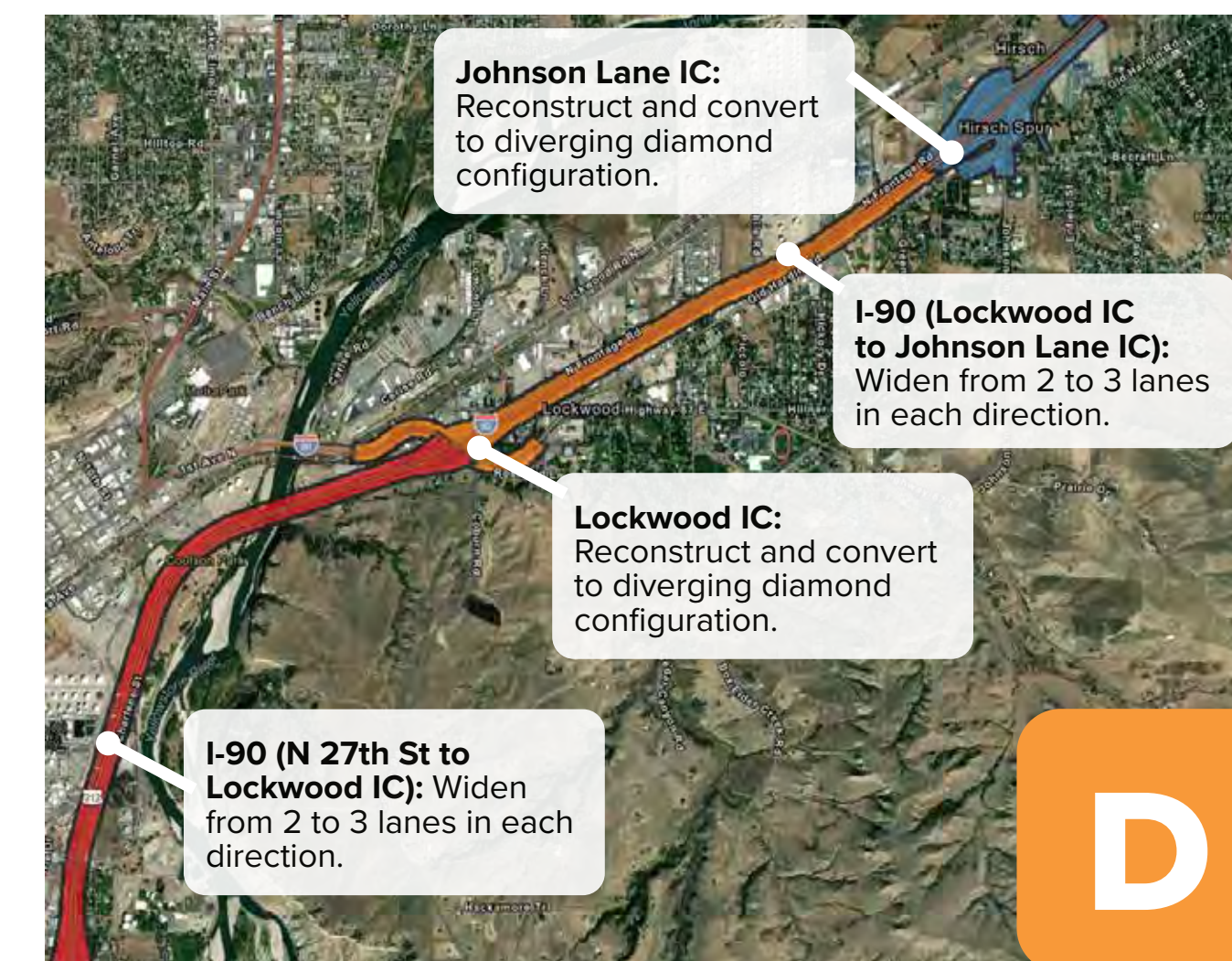


INNER BELT LOOP: New 6-mile roadway will connect the Heights and west Billings neighborhoods. The project includes a multi-use pathway and is being funded by a BUILD Transportation Grant.

SKYLINE TRAIL: This new multi-use pathway will extend along Highway 3 from Zimmerman Trail to the existing multi-use pathway west of 27th Street. Construction is anticipated by Summer 2023.



DOWNTOWN TWO-WAY CONVERSION: The City of Billings is currently converting one-way streets in downtown to two-way. 29th Street and 30th Street were recently converted and the City has begun the design process to convert additional streets to two-way.

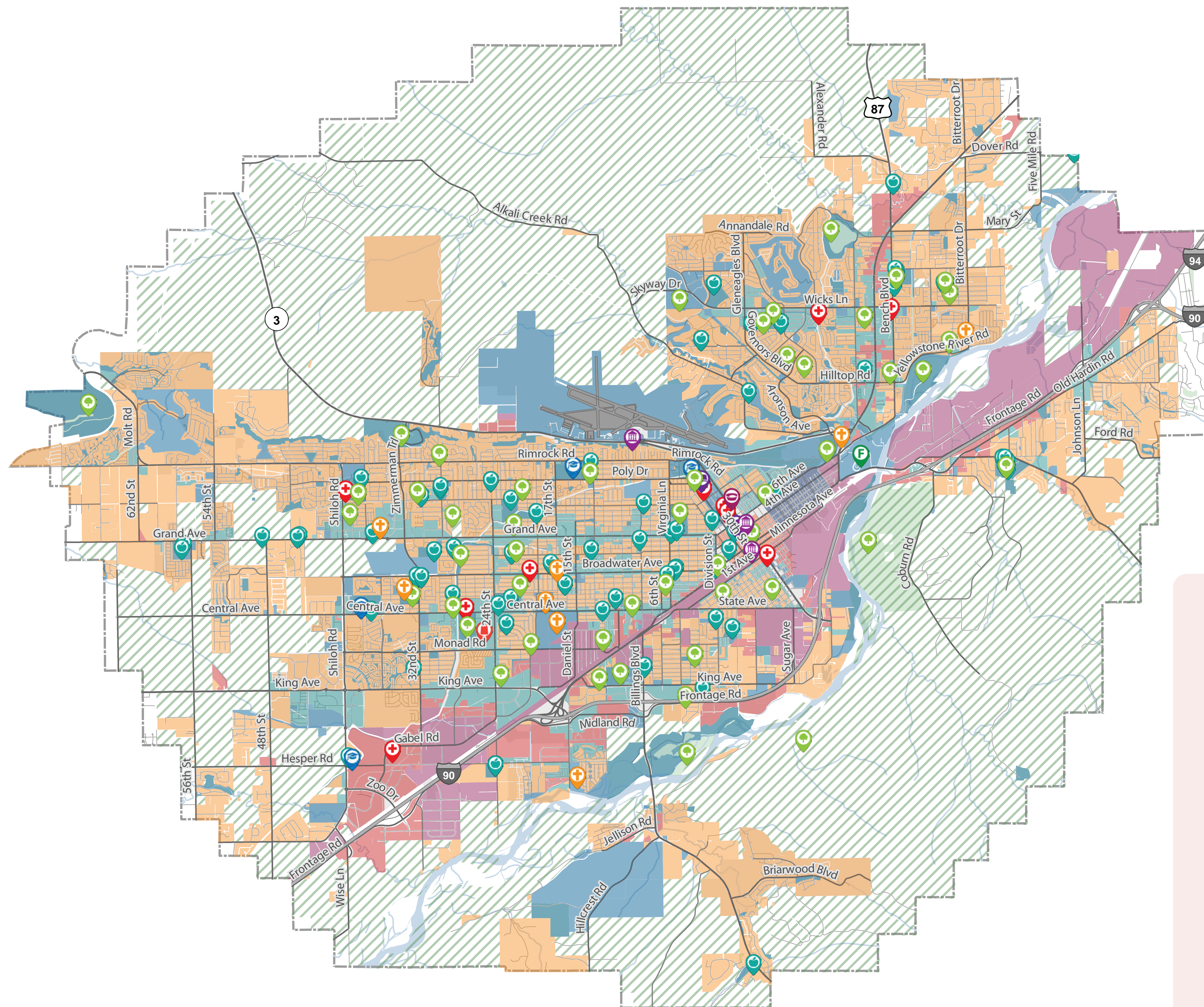


I-90 WIDENING: MDT has three on-going projects to widen I-90 and improve interchanges from Johnson Lane to 27th Street. The projects are multi-phase and construction of all phases are tentatively anticipated by 2025.



BILLINGS BYPASS: The Billings Bypass is a multi-phase MDT project that will connect the Johnson Lane/I-90 Interchange to the Heights neighborhood via a new roadway and Yellowstone River Crossing. The initial phase of the project (Five Mile Road and Yellowstone River Bridge) have been constructed. The tentative completion date for all portions of the project is 2025.

Land Use



ZONING AND MAJOR ACTIVITY CENTERS



Existing Zoning

- Mixed Use
- Residential
- Commercial
- Core Business District
- Public
- Industrial
- Agricultural
- East Billings Urban Renewal District
- Billings Airport

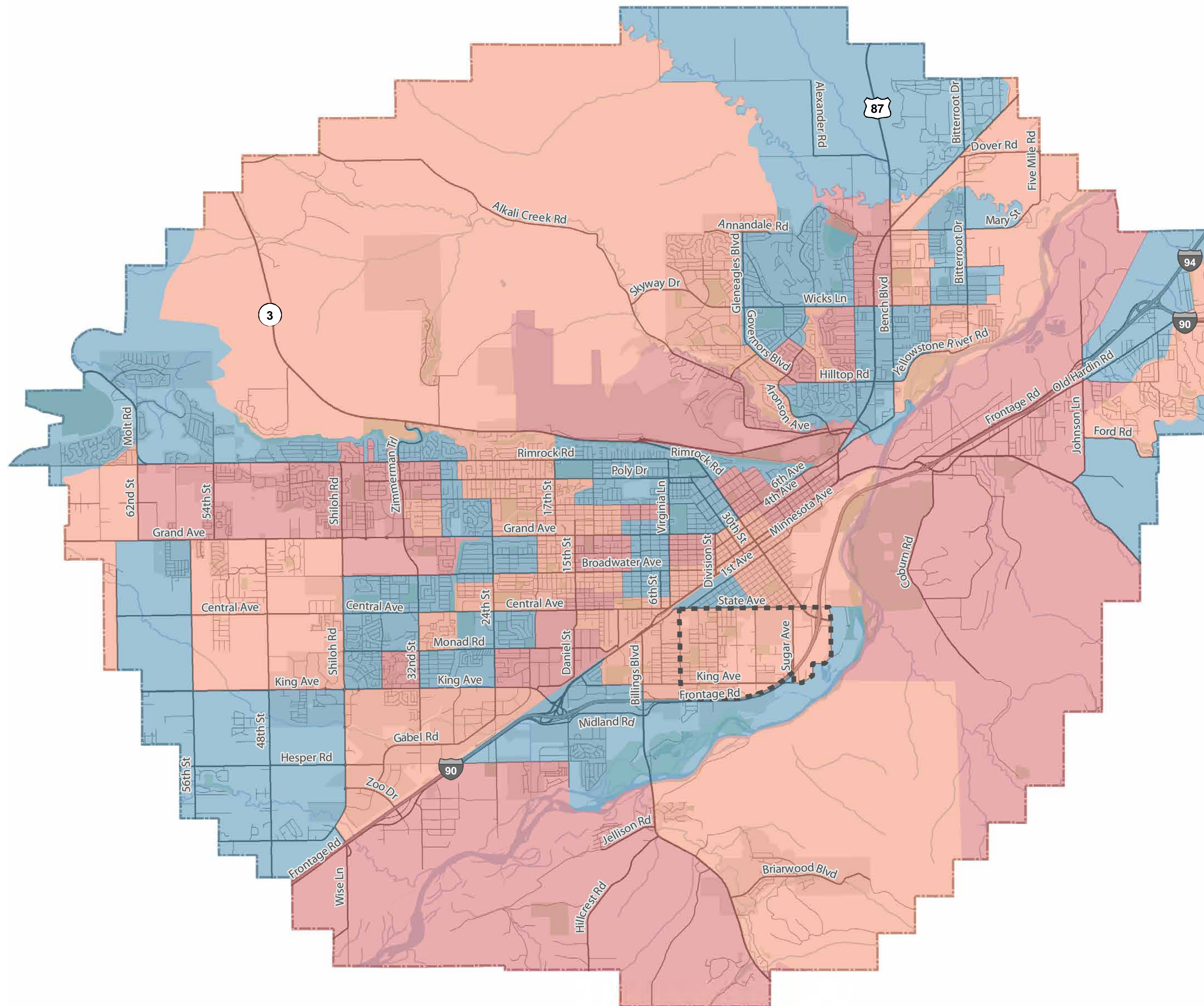
Major Activity Centers

- Stadium
- Library
- Park
- Museum
- Fairgrounds
- Shopping Mall
- Cemetery
- College
- Schools
- Hospital

Data Source: City of Billings, Yellowstone County

Since the 2018 LRTP, land use in the MPO region has changed to include Mixed Use Zoning, which includes Neighborhood Mixed Use, Corridor Mixed Use, and Mixed Residential zones. These zones are intended to accommodate a mix of uses that are comfortably accessible via all modes of transportation.

Equity



TRANSPORTATION DISADVANTAGED POPULATIONS AND AREAS OF PERSISTENT POVERTY



Transportation Disadvantaged Population by Block Group

- High Transportation Disadvantage
- Medium Transportation Disadvantage
- Low Transportation Disadvantage
- USDOT Area of Persistent Poverty

Data Source: US Census Bureau (2020),
US Department of Transportation

To understand and acknowledge the communities in Billings that likely need more equitable and accessible transportation investments, demographic data from the 2020 Census was analyzed to understand the population density of Billings communities in terms of:

- Youth (Aged 18 and Younger)
- Elders (Aged 65 and Older)
- People with Disabilities
- Households Experiencing Poverty
- Households with Limited English Proficiency
- Households without Cars

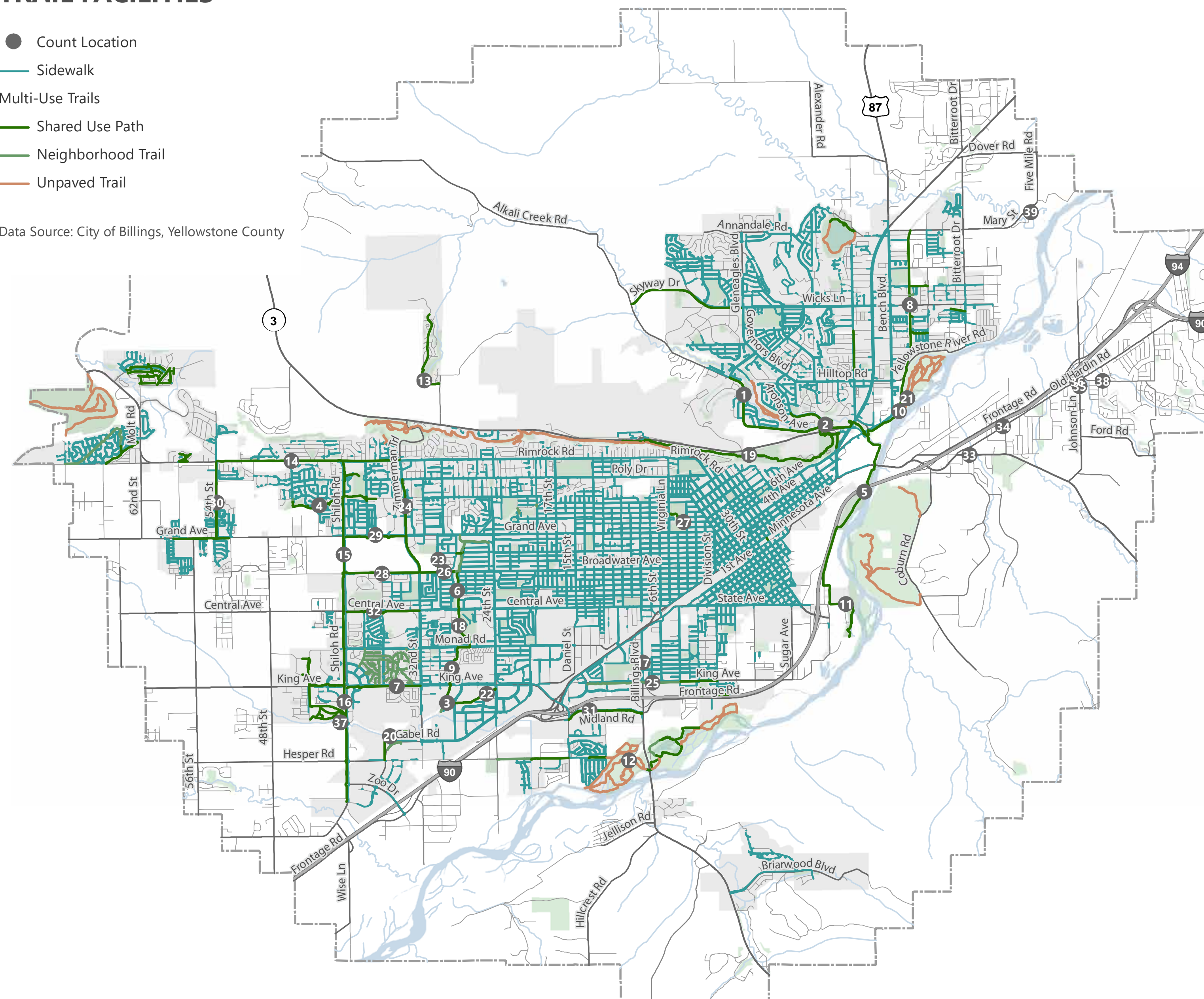
An index based on the 50th percentile for each of these criteria was created to identify transportation-disadvantaged communities in the Billings Urban Area.

Pedestrians and Bicyclists

SIDEWALK AND TRAIL FACILITIES

- Count Location
- Sidewalk
- Multi-Use Trails
- Shared Use Path
- Neighborhood Trail
- Unpaved Trail

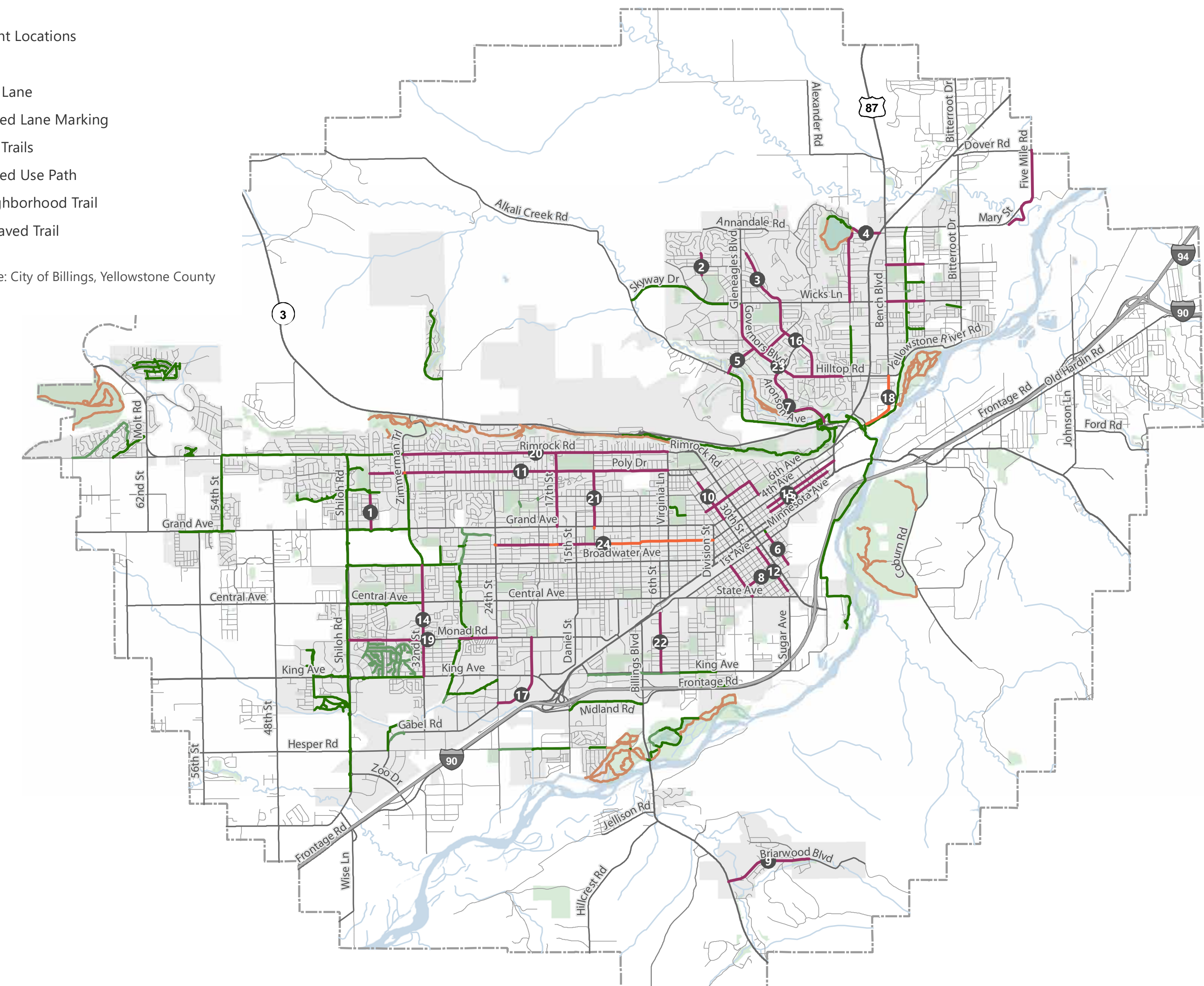
Data Source: City of Billings, Yellowstone County



BIKE LANES AND TRAIL FACILITIES

- Count Locations
- Bikeways
- Bike Lane
- Shared Lane Marking
- Multi-Use Trails
- Shared Use Path
- Neighborhood Trail
- Unpaved Trail

Data Source: City of Billings, Yellowstone County



Since the 2018 LRTP was completed, a substantial amount of progress has been made towards improving walking and biking conditions in the Billings Urban Area, including:

A 6% increase in bicycle lane miles, equating to 2 miles built to bring the network to 27.5 miles.

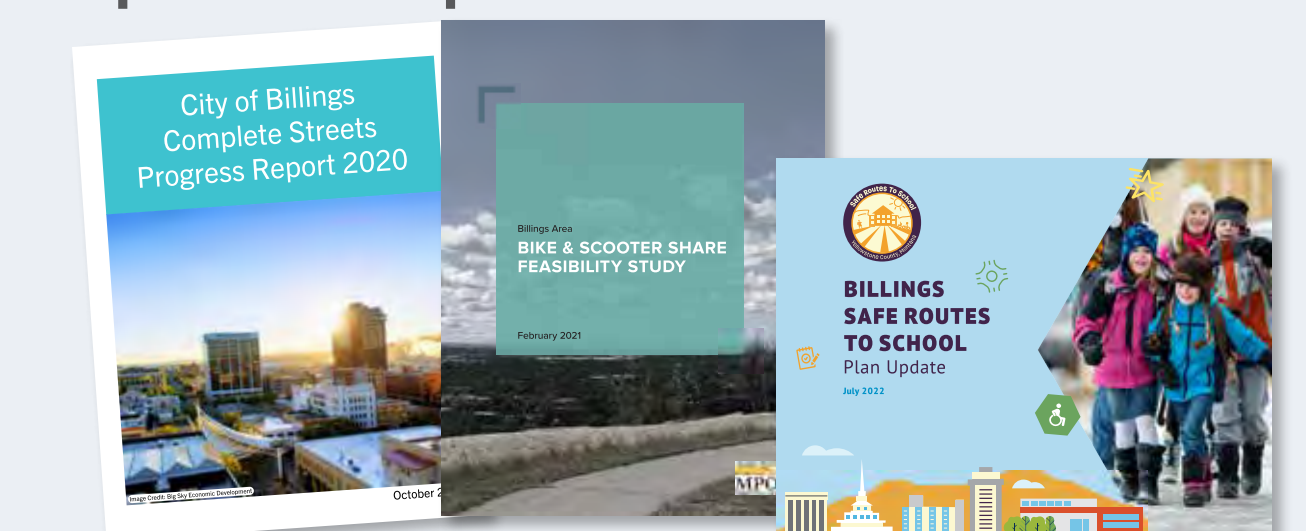
A 3% increase in shared-use trail miles, with an additional 3.7 miles built to bring the network to 49.3 miles.

93% of identified completed or on-going projects from the City of Billings and Yellowstone County public works programs included pedestrian or bicycle facilities.

More Facilities = More Walking + More Biking!

At selected trails and intersections, average daily pedestrian and bicycle volumes have grown 1.3% - with some locations growing as much as 6.8%!

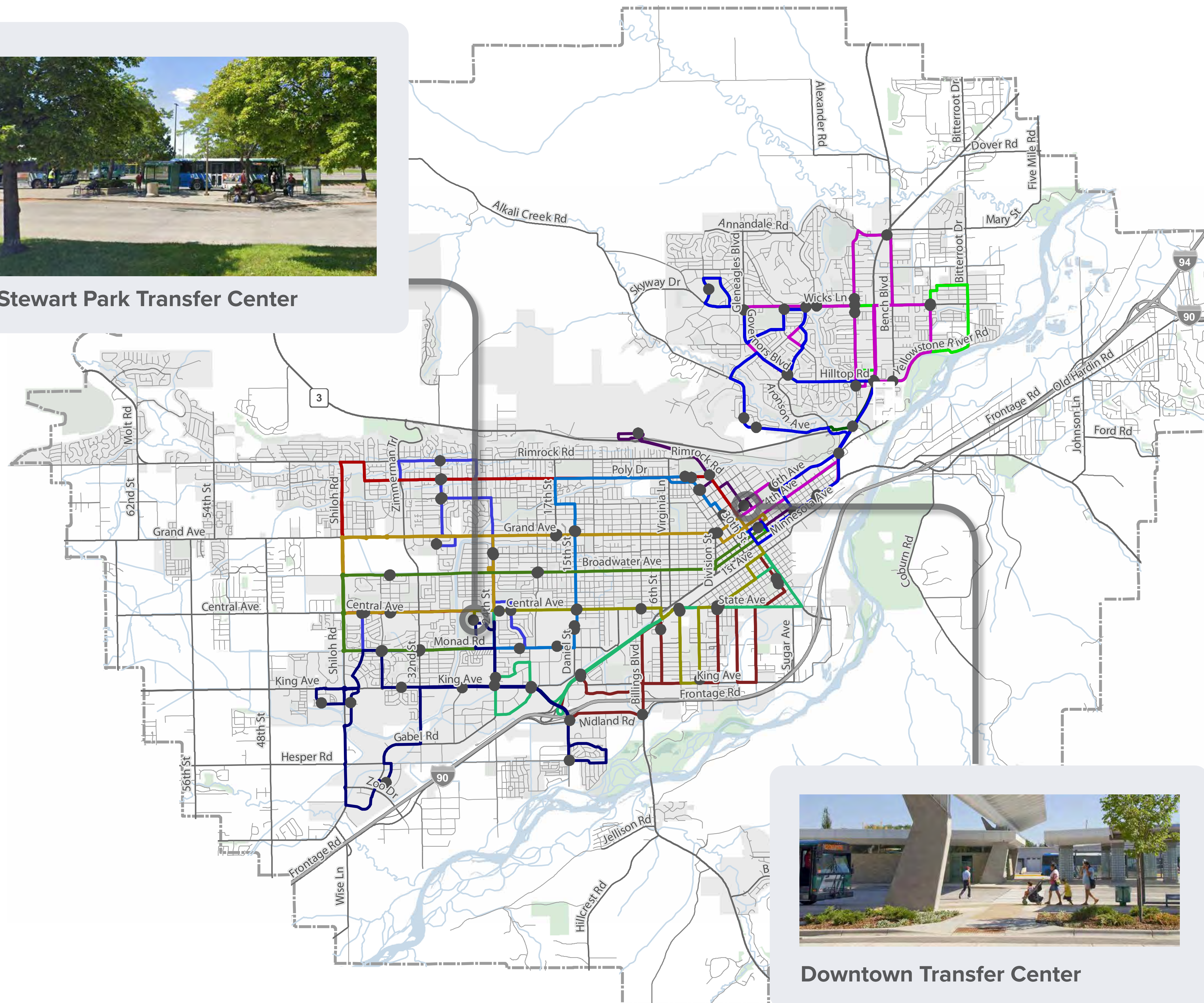
Recent planning work has also updated important documents.



MET Transit



Stewart Park Transfer Center



Downtown Transfer Center

FIXED ROUTE SERVICES



- Bus Stops
 - MET Weekday Routes
 - 1 Metlink
 - 3 Crosstown*
 - 5A / 5B Grand*
 - 7 Broadwater*
 - 9 Central*
 - 10 Southside
 - 13 Westend*
 - 14 Alkali
 - 15 Hilltop
 - 16 Main
 - 17 Bench
 - 18 Heights*
 - 19 The Loop*
 - 24 Poly
 - T3 Will James
- Data Source: MET Transit
- *Indicates Saturday Service Route

MET Offers

19
WEEKDAY
ROUTES

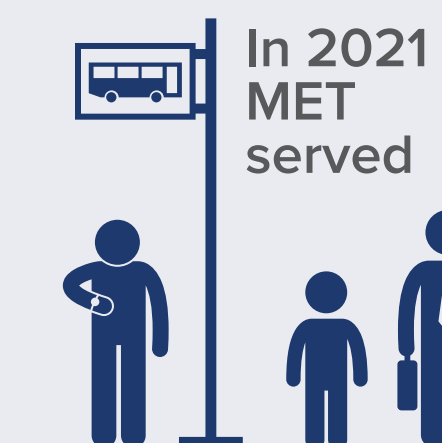
5:50 AM – 6:40 PM



“SCHOOL TRIPPER”
ON WEEKDAYS

7 SATURDAY ROUTES
8:10 AM – 6:10 PM

21
MET TRANSIT
TRANSFER
CENTERS



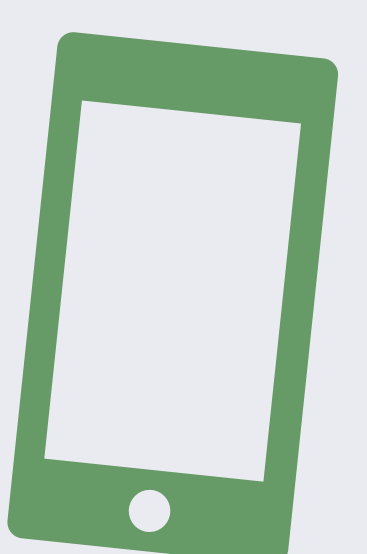
In 2021
MET
served

384,306

FIXED
ROUTE
RIDES

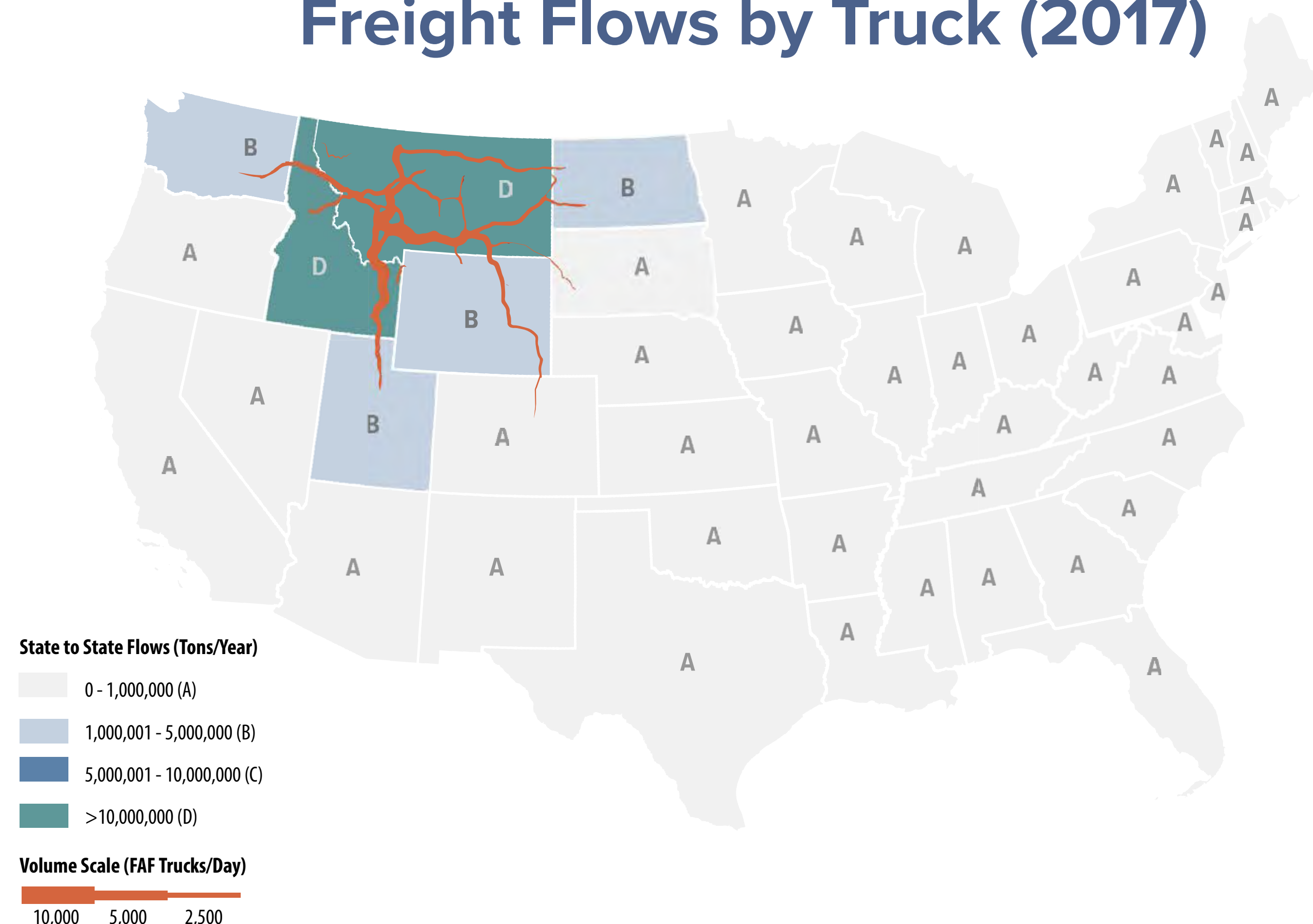
23,487 PARATRANSIT
RIDES

All fixed route buses are equipped with automated passenger counts (APCs) to inventory popular boarding and alighting locations. The APCs also serve as real-time bus trackers! MET also has a digital fare payment system to enable online and smart phone ticketing.



Trucking, Aviation, & Rail

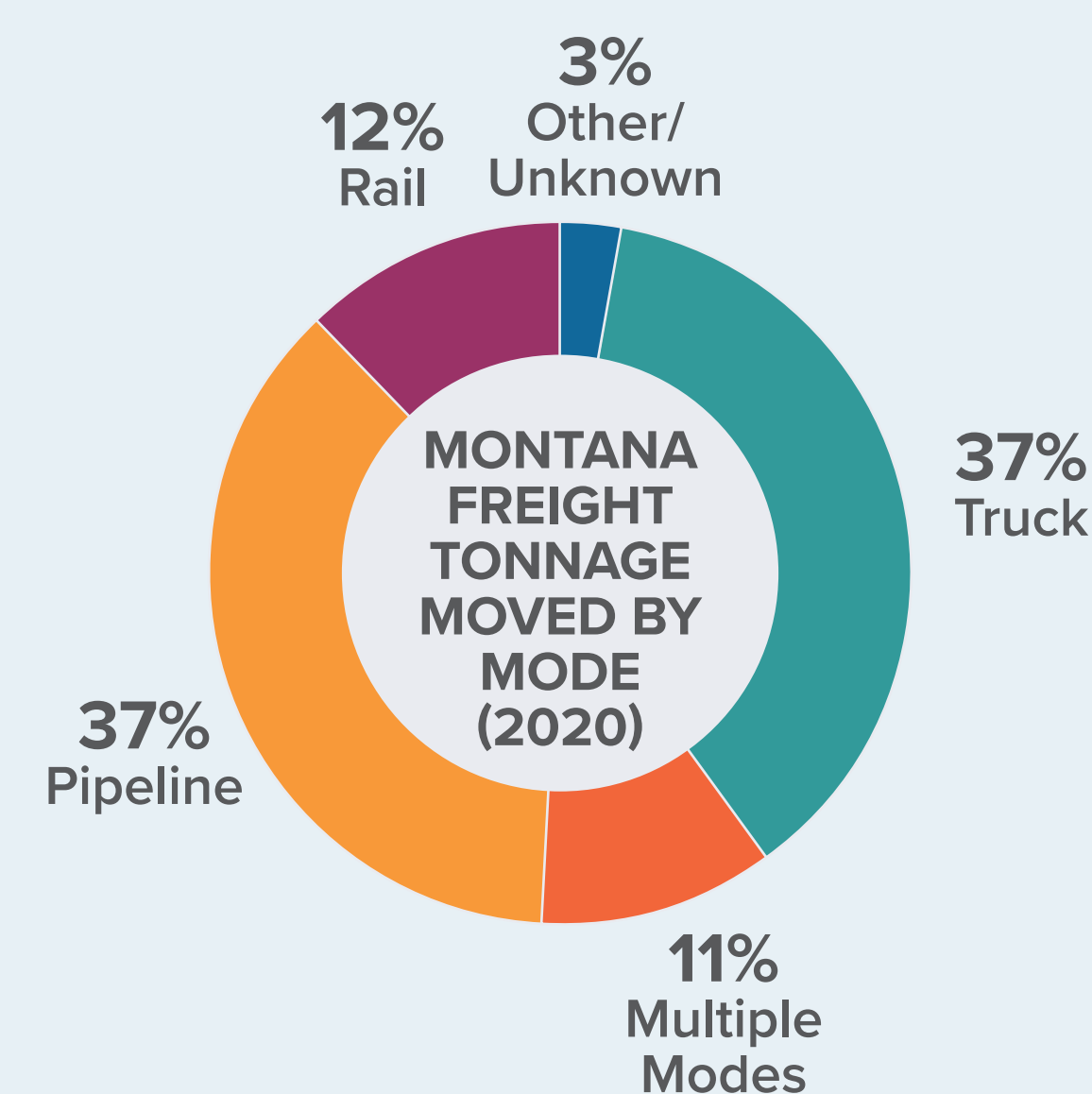
Federal Highway Administration - Freight Flows by Truck (2017)



Billings Logan International Airport Direct Passenger Flight Locations



Billings serves as the highest volumes of trucking traffic in the state. As demand continues to increase in the state and region, it is important for Billings to invest in infrastructure maintenance, capacity, and safety on designated trucking routes to address anticipated future needs.



Between 2017 – 2021, an average of 460,850 tons of freight were moved by aviation per year. In 2021, there were 384,070 passenger enplanements at BIL.

Montana Rail Link (MRL) and Burlington Northern Santa Fe Corporation (BNSF) operate all rail lines in the Urban Area, except for multiple privately operated spurs for industrial use.

Safety

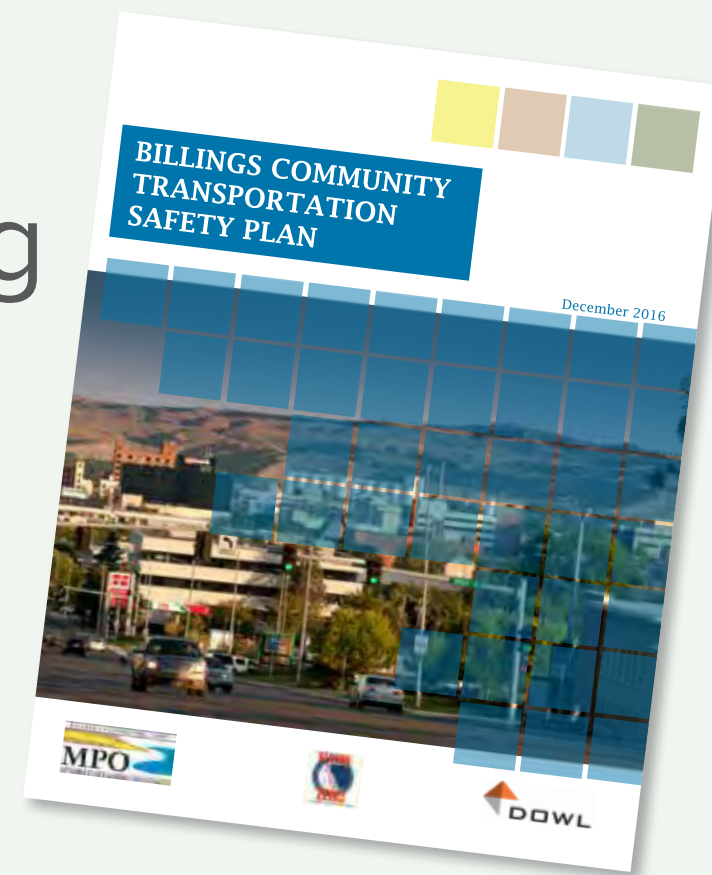
Safety is key element in the LRTP and everything the Billings MPO does.

Since the 2018 LRTP, there has been a 17% decrease in fatal and serious injuries and a 30% decrease in pedestrian and bicycle fatal and serious injuries in the Billings Urban Area.



Along with the Montana Department of Transportation, the Billings MPO is updating the Community Transportation Safety Plan (CTSP).

The CTSP endeavors to reduce the number and severity of roadway crashes through the Four E's of Transportation Safety:



Education



Enforcement



Emergency
Medical
Services



Engineering

The Billings MPO recently adopted an update to the Safe Routes to School (SRTS) Plan to continue to encourage students and their families to walk and bike to school.

The SRTS Plan makes walking and biking to school safer through the Six E's of Safe Routes to School:



Engagement



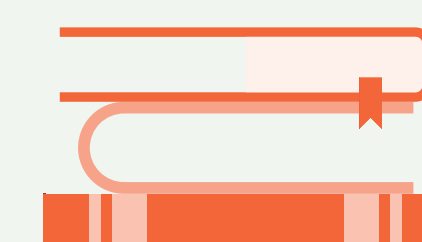
Equity



Engineering



Encouragement

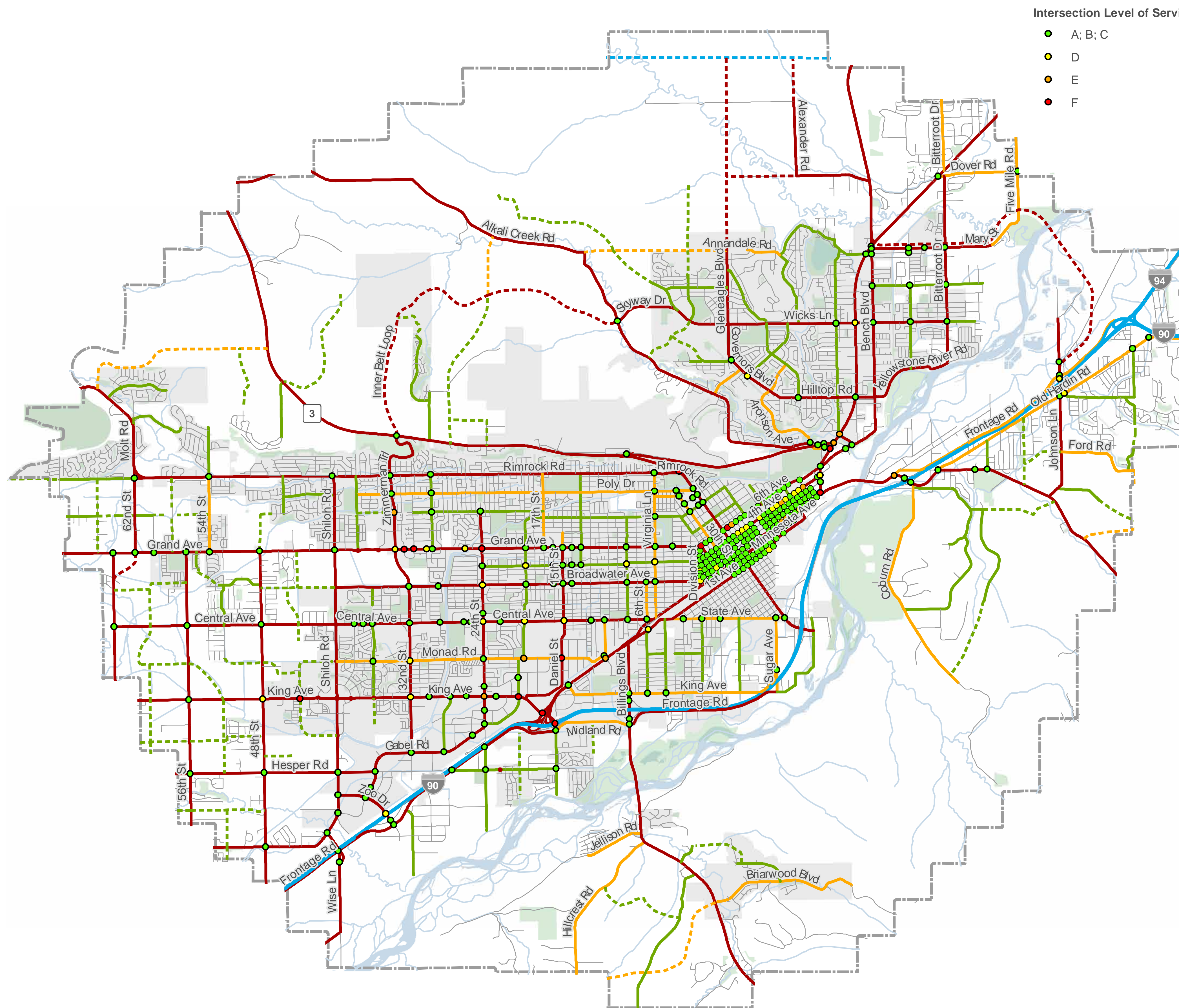


Education



Evaluation

Roadway Functional Classification & Year 2022 Traffic Operations



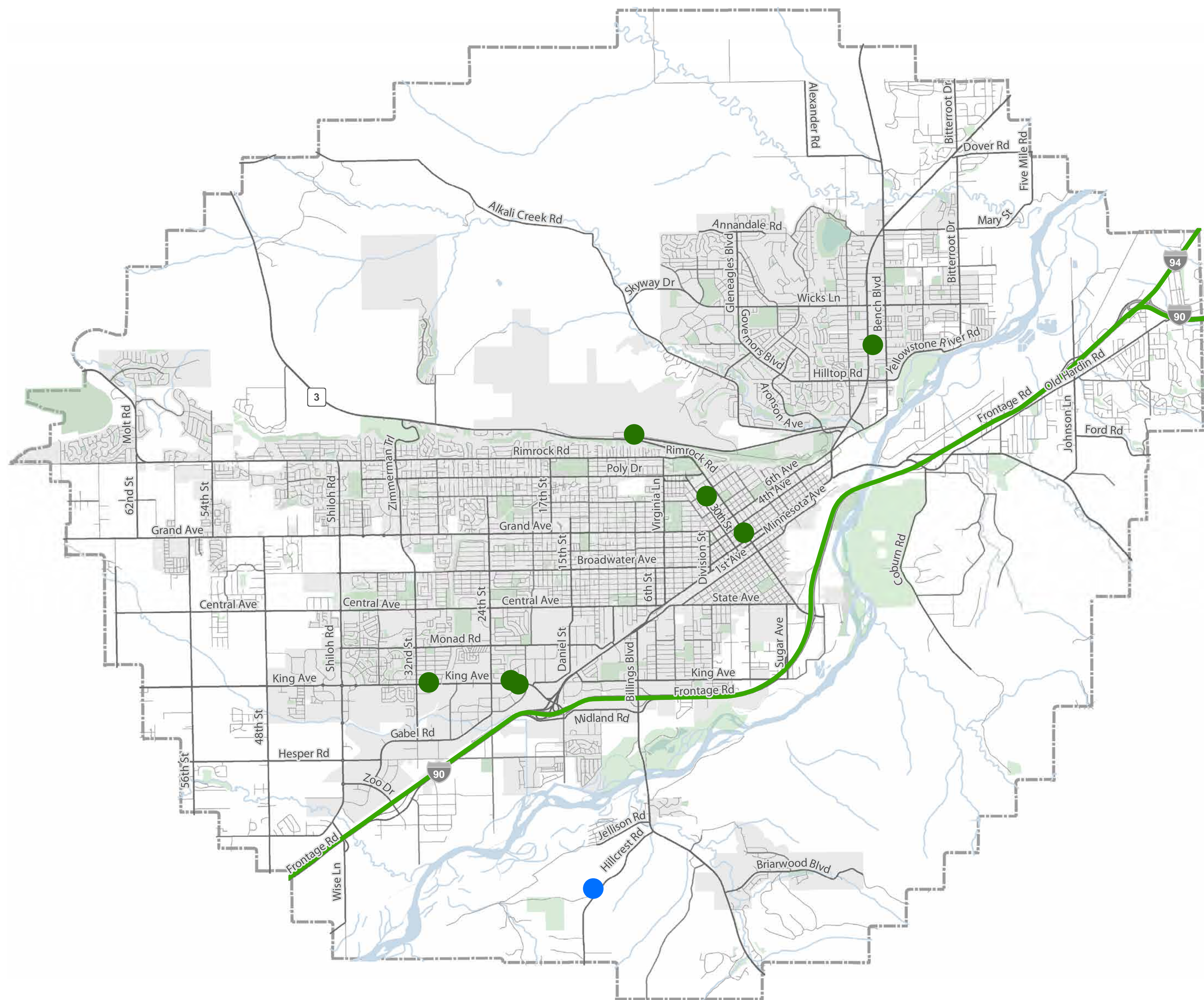
Functional Classification: A roadway functional classification system defines a road's role in the overall context of the transportation system. It helps to define which standards should be achieved for roadway width, right-of-way needs, access spacing, bicycle and pedestrian facilities, and other specifications.

Intersection Level of Service: Level of service (LOS) provides an indicator of the average delay that a vehicle experiences when traveling through an intersection. LOS A indicates a low amount of vehicle delay (less than 10 seconds) and LOS F indicates a high amount of vehicle delay (greater than 50 seconds for stop control and greater than 80 seconds for signal). It is generally desirable to achieve LOS D or better at intersections. There are 12 stop-controlled intersections and 13 intersections with traffic signals that operate at LOS E or LOS F.

Traffic Volumes: Intersection level-of-service is largely determined by roadway traffic volumes. The roadways with the highest traffic volumes in the study area are as follows:

- Main Street (45,000 daily vehicles)
- King Avenue (40,000 daily vehicles)
- I-90 (34,000 daily vehicles)
- 24th Street (26,000 daily vehicles)
- Grand Avenue (24,000 daily vehicles)

Emerging Technologies



EMERGING TECHNOLOGY READINESS



- Cellular Tower
- Electric Vehicle Charging Station
- Alternate Fuel Corridor - Electric Vehicle

Data Source: US Department of Energy,
Federal Communications Commission,
Federal Highway Administration

FCC data indicates that all Census tracts in the
Billings urban area are covered by 4G LTE service.
For this reason, cellular coverage is not depicted.

Emerging transportation technologies encompass a broad range of evolving applications of science, engineering, and social organization that could change how people live and move around their communities.

Some examples of emerging technologies in Billings include:



ELECTRIC VEHICLES

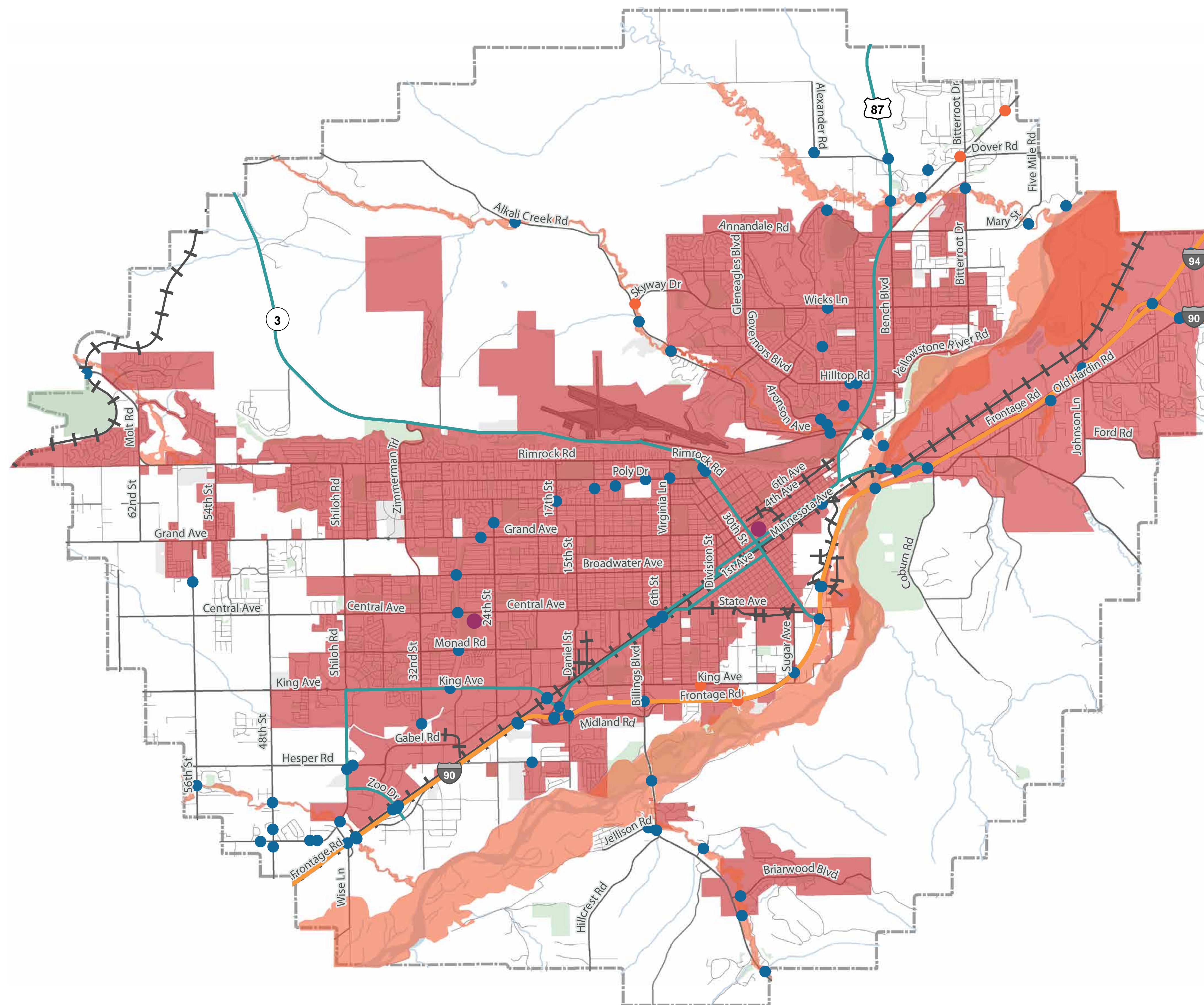


TRANSIT TECH
such as GPS-Enabled
Real-time Bus Trackers
and Automated
Passenger Counters



**TRANSPORTATION
NETWORK
COMPANIES**
like Uber and Lyft

Security and Resiliency



CRITICAL INFRASTRUCTURE, WILDFIRE RISK, AND FLOOD RISK



- Bridge
 ● Culvert
 ● MET Transit Transfer Station
 ■ Billings Logan International Airport
 + Railroad
 National Highway System (NHS)
 — Interstate NHS
 — Non-Interstate NHS

Flood Hazard Risk
 ■ High Flood Risk
 ■ Montana Wildfire Risk Assessment
 ■ Very High Wildfire Risk

Data Source: Montana Department of Transportation, MET Transit, City of Billings, Yellowstone County, Montana Department of Natural Resources & Conservation, Federal Emergency Management Administration

Transportation security and resiliency planning can reduce the negative impacts to the regional transportation system from major natural or human-made harmful events. Some examples of these events include:

- Tornadoes
- Floods
- Blizzards
- Wildfires
- Pandemics
- Physical or Digital Attacks

At both the statewide and regional level, planning to address and mitigate these types of risks is ongoing. Recent examples include:



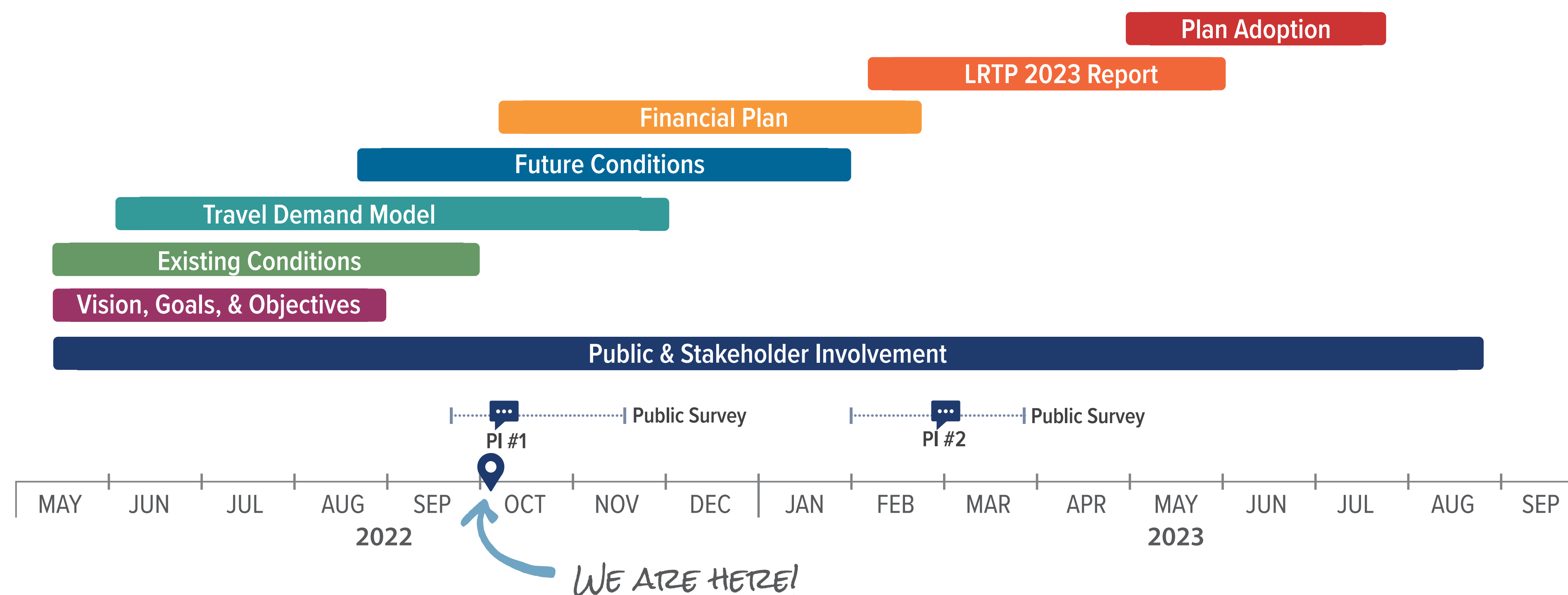
Next Steps

WHAT IS NEXT?

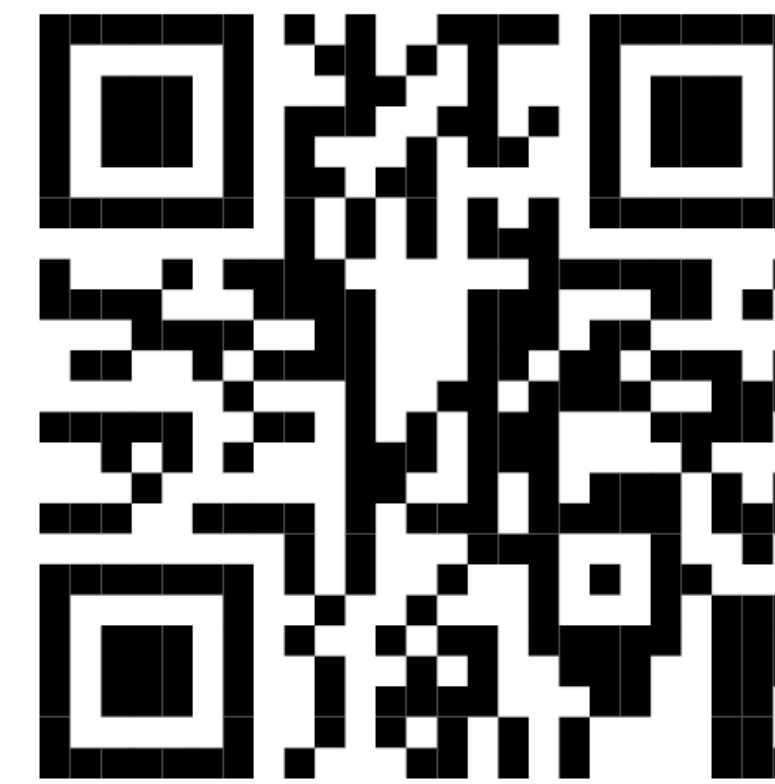
Following this meeting, our team will work to:

- Summarize comments from Public Open House #1
- Develop and analyze future conditions
- Identify a draft projects list
- Prepare a draft plan for review and comment
- Present materials at Public Open House #2 (February/March 2023)

Project Schedule



Thank you for participating!



Provide comments via our interactive web map survey:
www.billingslrtp.com/interactive-map



How to Stay Involved?

- Sign up on the “Notify Me” list on the City’s website: <http://ci.billings.mt.us/>
- Attend future public meetings
- Check back frequently for updates on our project website at www.billingslrtp.com
- Contact **Lisa Olmsted** at **406.869.6329** or via email at lolmsted@dowl.com.

Tell us what you think!

SCAN THE QR CODE



**Or visit www.billingsLRTP.com/interactive-map
and click the 'Provide Input' button**