



PLT CENTRALISER

SPECIFICATIONS

OD 200mm (8") max

ID 42.8mm (1 11/16")

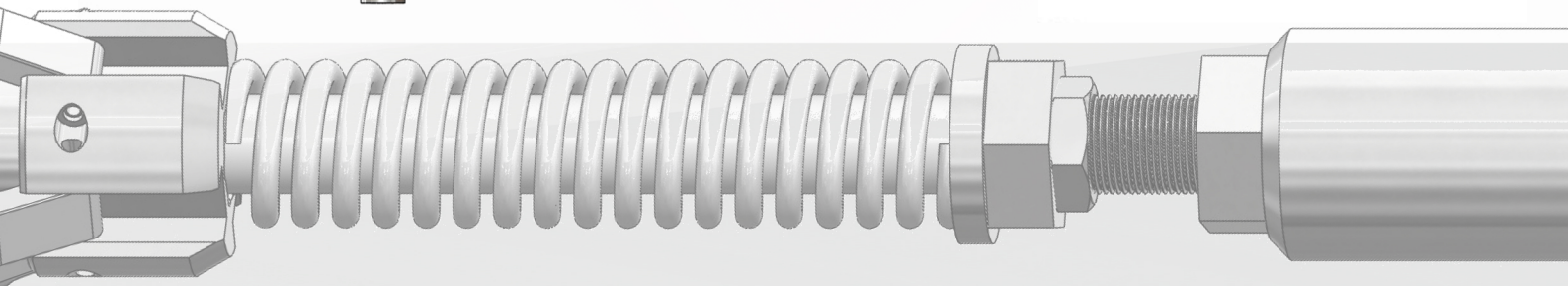
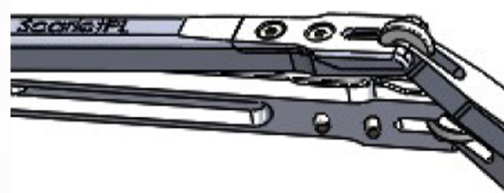
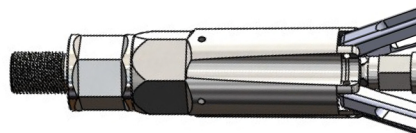
735mm (30")

Adjustable spring force

Inconel 718 Arms and rollers/wheels

Inconel 718 wheels - easy changeable.

Stainless 316L body parts, corrosion resistant



EMAIL
contacto@hojuel.com



PHONE
+52 55 1135 2935

Manufactured by ScarletPL Ltd, based in Plymouth UK.