

# COPPER PIPES & FITTINGS

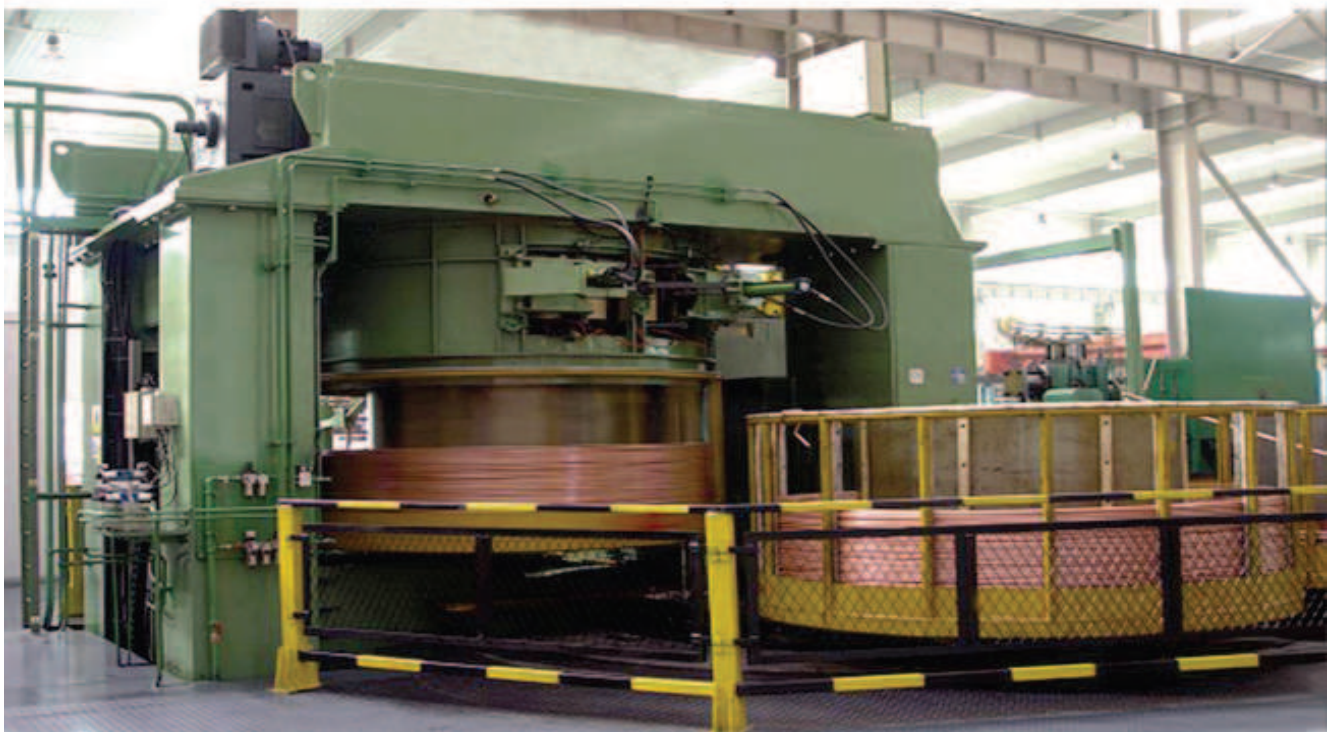
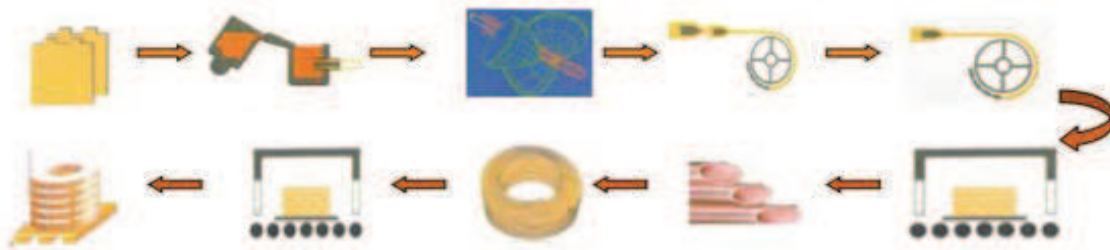


**WOLF INTERNATIONAL**

WOLF International in joint association with factories in Asia & Europe brings yet another quality product for Middle East / South Asia & Africa.

WOLF International Specialized HVACR products introduces latest range of copper tubes, copper water tubes and copper fittings. The Factories are having modernized production lines, first class facilities, management, R & D team and advanced production equipments and testing equipments from Germany, Japan and USA, based on these equipments modernized production lines of extruding, rolling, drawing innergrooved tube shaping, winding, annealing and plastic coated tube shaping, factories are having capacity over 55,000 tons, ISO9001:2000 ISO 14001:2004, ASTM B280 are certified here.

The main products are: LWC (Plain), LWC (Inner grooved), Pancake Coils, ACR Straight Tubes, Capillary Tubes, Copper Water Tubes, Copper Fittings, Insulated Copper Tubes and Plastic-coated Copper Tubes, all products are produced strictly according to ASTM, EN, BS, JIS, GB/T Standard and widely used for HVACR and fluid transmission. Being of the top-class quality the products have been appraised as "WI Brand", Recommended Product for Engineering and Construction, one of the worlds top brand for Copper Tubes & fittings etc.





## PRODUCTION STRENGTH

First-class production equipments



First-class detection equipments

serial number	Detection Project	Name of the main testing equipment	type/producing area
01	Electrolytic Copper Chemical Composition	DC arc spectrometer	Ha-12 / U.S.BAIRD
02	copper tube chemical composition	EDM direct reading spectrometer	Dv-5 / U.S.BAIRD
03	copper tube bugs	Eddy Current Flaw Detector (online testing)	GERMANY db GERMANYfoerster
04	oxygen content	Eddy Current Flaw Detector (online testing)	Ro-416 / U.S.LECD
05	copper tube inner wall	Chloride Plasma volume Chromatography	Dx-120 / U.S.DIONEX
06	Grain, the thread profile	Metallographic Microscope	06CK-40M / Japan Aolinbasai
07	Computer electronic mechanical properties	Universal Testing Machine	CMT4504 / CHINA
08	Cleanliness	ultrasonic clearing machine	TP2000/CHINA
		electron scale	BP211D/GERMANY
09	oil of the tube inner wall	Oil content analyzer	OCMA-300 / Japan HORIBA
10	moisture of the tube inner wall	Refrigerator system water testing machine	USI-3 / CHINA



Spectrometer



Oxygen meter



Chlorine ion detector



Oil content analyzer



Eddy current  
flaw detector



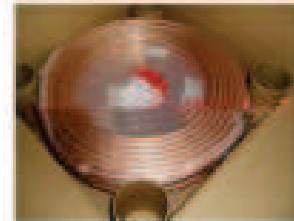
Copper tube profile  
parameter test



Metallographic  
analysis microscope



WOLF International is specialized in HVACR copper tubes, environmental protection copper water tubes and copper fittings. The main products are: LWC, Pancake Coils, ACR Straight Tubes, Caillary Tubes, Copper Water Tubes, Copper Fittings, insulated Copper Tubes and Plastic-coated Copper Tubes. We have passed ISO9001, ISO14001, UPC, SGS and TUV etc., these promise that the products we produced are always of the best quality.



## Specifications

Thickness O.D	0.30 mm	0.35 mm	0.40 mm	0.45 mm	0.50 mm	0.55 mm	0.60 mm	0.65 mm	0.70 mm	0.75 mm	0.80 mm	1.00 mm	1.20 mm	1.50 mm
4.00			⊙	⊙	⊙									
4.76(3/16in)		⊙	⊙	⊙	⊙	⊙	⊙	⊙	⊙	⊙	⊙	⊙		
6.00		⊙	⊙	⊙	⊙	⊙	⊙	⊙	⊙	⊙	⊙	⊙		
6.35(1/4in)		⊙	⊙	⊙	⊙	⊙	⊙	⊙	⊙	⊙	⊙	⊙	⊙	
7.94(5/16in)	⊙	⊙	⊙	⊙	⊙	⊙	⊙	⊙	⊙	⊙	⊙	⊙	⊙	
8.00	⊙	⊙	⊙	⊙	⊙	⊙	⊙	⊙	⊙	⊙	⊙	⊙	⊙	
9.52(3/8in)	⊙	⊙	⊙	⊙	⊙	⊙	⊙	⊙	⊙	⊙	⊙	⊙	⊙	⊙
12.00		⊙	⊙	⊙	⊙	⊙	⊙	⊙	⊙	⊙	⊙	⊙	⊙	⊙
12.70(1/2in)		⊙	⊙	⊙	⊙	⊙	⊙	⊙	⊙	⊙	⊙	⊙	⊙	⊙
14.00			⊙	⊙	⊙	⊙	⊙	⊙	⊙	⊙	⊙	⊙	⊙	⊙
15.00			⊙	⊙	⊙	⊙	⊙	⊙	⊙	⊙	⊙	⊙	⊙	⊙
15.88(5/8in)			⊙	⊙	⊙	⊙	⊙	⊙	⊙	⊙	⊙	⊙	⊙	⊙
16.00					⊙	⊙	⊙	⊙	⊙	⊙	⊙	⊙	⊙	⊙
19.05(3/4in)							⊙	⊙	⊙	⊙	⊙	⊙	⊙	⊙
28.57(11/8in)									⊙	⊙	⊙	⊙	⊙	⊙

**Remark:** Sizes with mark "⊙" indicate those are common sizes which the company is making. Any unusual sizes with special requirement can be tailor-made against order.

### DESCRIPTION:

1. Standard Complied: ASTM B-280, EN-12735, JISH-330Q GB/T-17791
2. Alloy no.: C12200, C1220, TP2
3. Main Specification:
  - Outer Diameter: 3/16 (4.76mm) ~ 1-1/8(28.58mm)
  - Wall Thickness: 0.016(0.41mm) ~ 0.05(1.27mm)
  - Length: 15m-50m
4. Type of products: Double layer or single layer(according to length)





## Specifications

Thickness O.D.	0.30 mm	0.35 mm	0.40 mm	0.45 mm	0.50 mm	0.55 mm	0.60 mm	0.65 mm	0.70 mm	0.75 mm	0.80 mm	1.00 mm	1.20 mm	1.50 mm
4.76(3/16in)		⊙	⊙	⊙	⊙	⊙	⊙	⊙	⊙	⊙	⊙	⊙		
6.00		⊙	⊙	⊙	⊙	⊙	⊙	⊙	⊙	⊙	⊙	⊙	⊙	⊙
6.35(1/4in)		⊙	⊙	⊙	⊙	⊙	⊙	⊙	⊙	⊙	⊙	⊙	⊙	⊙
7.00	⊙	⊙	⊙	⊙	⊙	⊙	⊙	⊙	⊙	⊙	⊙	⊙	⊙	⊙
7.94(5/16in)	⊙	⊙	⊙	⊙	⊙	⊙	⊙	⊙	⊙	⊙	⊙	⊙	⊙	⊙
8.00	⊙	⊙	⊙	⊙	⊙	⊙	⊙	⊙	⊙	⊙	⊙	⊙	⊙	⊙
9.52(3/8in)	⊙	⊙	⊙	⊙	⊙	⊙	⊙	⊙	⊙	⊙	⊙	⊙	⊙	⊙
10.00	⊙	⊙	⊙	⊙	⊙	⊙	⊙	⊙	⊙	⊙	⊙	⊙	⊙	⊙
12.00		⊙	⊙	⊙	⊙	⊙	⊙	⊙	⊙	⊙	⊙	⊙	⊙	⊙
12.70(1/2in)		⊙	⊙	⊙	⊙	⊙	⊙	⊙	⊙	⊙	⊙	⊙	⊙	⊙
14.00			⊙	⊙	⊙	⊙	⊙	⊙	⊙	⊙	⊙	⊙	⊙	⊙
15.00			⊙	⊙	⊙	⊙	⊙	⊙	⊙	⊙	⊙	⊙	⊙	⊙
15.88(5/8in)			⊙	⊙	⊙	⊙	⊙	⊙	⊙	⊙	⊙	⊙	⊙	⊙
16.00						⊙	⊙	⊙	⊙	⊙	⊙	⊙	⊙	⊙
19.05(3/4in)						⊙	⊙	⊙	⊙	⊙	⊙	⊙	⊙	⊙
22.22(7/8in)						⊙	⊙	⊙	⊙	⊙	⊙	⊙	⊙	⊙
25.4(1in)									⊙	⊙	⊙	⊙	⊙	
28.57(1-1/8in)										⊙	⊙	⊙	⊙	

**Remark:** Sizes with mark "⊙" indicate those are common sizes which the company is making. Any unusual sizes with special requirement can be tailor-made against order.

### DESCRIPTION:

1. Standard Complied: ASTM B-280, EN-12735, JISH-3300, GB/T-1527
2. Alloy no.: C12200, C1220, TP2
3. Temper: soft drawn or light soft drawn, hard or half hard
4. Main Specification:
  - Outer Diameter: 4mm ~ 152.4mm
  - Wall Thickness: 0.41mm ~ 6mm



## Specifications

Item	Unit	Insulated Material		
Average density	G/cm <sup>3</sup>	0.028~0.038	0.025~0.044	0.023~0.038
Extensibility	kg/cm <sup>2</sup>	Above 2.5	Above 2.5	Above 2.0
Max temperature	°C	80	100	120
Water absorbability	mg/cm <sup>2</sup>	Below 0.1		
Heat transfer variable	kcal/m <sup>2</sup> h°C	Below 0.037		
Contract of thickness	%	Below 7		
Fire-proofing test	UL-04	Pass		

Specification	Copper Tube Outer diameter x thickness(mm)	Insulated Tube Inner diameter x thickness(mm)	Suitable for	Length(m)
1/4	6.35×0.75	Φ8(±0.5)×8(EMPAISTIC)	Centralized air condi- tioner	1~30
3/8	9.52×0.8	Φ12(±0.5)×8(EMPAISTIC)		1~30
1/2	12.70×0.8	Φ14(±0.5)×8(EMPAISTIC)		1~30
5/8	15.88×1.0	Φ16(±0.5)×9(EMPAISTIC)		1~30
3/4	19.05×1.0	Φ22(±1)×9(EMPAISTIC)		1~30
7/8	22.22×1.2	Φ25(±1)×10(EMPAISTIC)		1~30
1	25.40×1.2	Φ28(±1)×10(EMPAISTIC)		1~30
1-1/8	28.58×1.2	Φ32(±1)×10(EMPAISTIC)		1~30
1-1/4	31.75×1.5	Φ35(±1)×10(EMPAISTIC)		1~30
1-1/2	38.10×1.5	Φ42(±1)×10(EMPAISTIC)		1~30

Specification	Copper Tube Outer diameter x thickness(mm) ΦOD×D×T	Insulated Tube Inner diameter (mm)	Suitable for	Length(m)
1/4×3/8	6.35×0.75/9.52×0.8	Φ8(±0.5)/Φ12(±0.5)	1HP	1~30
1/4×1/2	6.35×0.8/12.70×0.8	Φ8(±0.5)/Φ14(±0.5)	1.5HP	1~30
1/4×5/8	6.35×0.8/15.88×1.0	Φ8(±0.5)/Φ16(±0.5)	2HP	1~20
3/8×5/8	9.52×0.8/15.88×1.0	Φ12(±0.5)/Φ18(±0.5)	3HP	1~20
3/8×3/4	9.52×0.8/19.05×1.0	Φ12(±0.5)/Φ22(±1)	4HP	1~15
1/2×3/4	12.70×0.8/19.05×1.0	Φ14(±0.5)/Φ22(±1)	5HP	1~15

- Note: 1). We accept making of customized tube(Max.length=50m)  
 2). The size of the outer diameter and the thickness can be customized with special orders  
 3). Insulated tube can be made with black rubber material  
 4). The two ends of tubes can be covered with copper head

**Remark:** These are common sizes which the company is making. Any unusual sizes with special requirement can be tailor-made against order.

## DESCRIPTION:

1. Standard Complied: ASTM B-280, EN-12735, JISH-3300, GB/T-17791(copper tube)
2. Insulated Material: PE
3. Character: Anti-UV, good heat resistance, low water absorption
4. Copper thickness compatible any gases: R22 - R407C- R410A -R404A - R507C etc
5. we accept making of customized tube( Max.length=50m)
6. Insulated tube can be made with black rubber material.
7. Insulated tube can be printed with black letter.
8. The two ends of tubes can be covered with copper head.





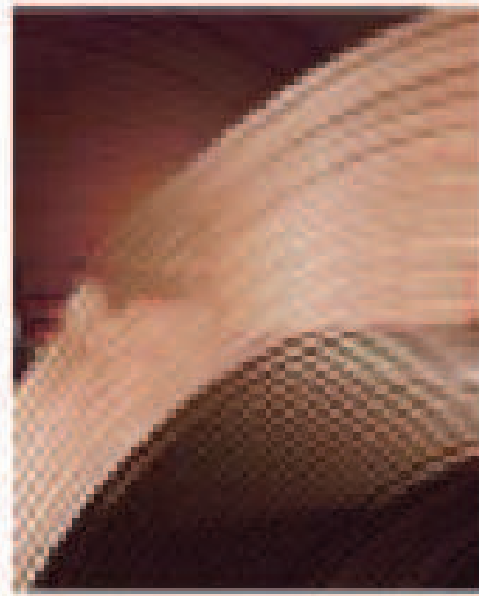
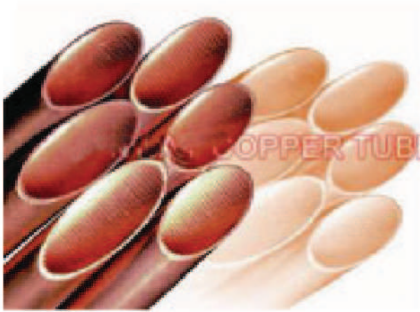
## Plastic-Coated Copper Tubes

**Application:** Fluid transmission of cool and hot water, drinking water, facilities health, cooling and heating, construction, anti-dew and anti-freezing in the transmission process.

**Standard of tube:** ASTM B-88, EN 1057

O.D of copper tube(mm)	O.D of plastic-coated tube (mm)		Maximum deviation (mm)	thickness of plastic layer (mm)		Maximum deviation (mm)	Gear Nos.
	parallel loop(mm)	gear shaped loop(mm)		parallel loop(mm)	gear shaped loop(mm)		
6	8.2	8.6	±0.20	1.1	1.3	±0.15	6~8
8	10.2	10.6	±0.20	1.1	1.3	±0.15	8~10
10	12.2	12.6	±0.20	1.1	1.3	±0.15	10~12
12	14.2	14.6	±0.20	1.1	1.3	±0.15	12~20
15	17.6	18.6	±0.25	1.3	1.8	±0.20	16~26
18	20.6	21.6	±0.25	1.3	1.8	±0.20	16~25
22	24.6	25.6	±0.25	1.3	1.8	±0.20	20~30
28	30.6	31.6	±0.25	1.3	1.8	±0.20	20~30
35	38.6	40	±0.30	1.8	2.5	±0.25	20~35
42	45.6	47	±0.30	1.8	2.5	±0.25	32~42
54	58	60	±0.40	2.0	0.3	±0.30	42~52

**Remark:** Sizes with mark "O" indicate those are common sizes which the company is making. Any unusual sizes with special requirement can be tailor-made against order.



## Specifications

Specifications	Unit weight	O.D	I.D	Bottom Wall Thickness TW	Fin Groove Depth HF	Total Wall Thickness	Apex Angle	Helix Angle	Number of Tooth
Φ5.00×0.20+0.15-18°	33	5.00	4.30	0.20	0.15	0.35	40	18	40
Φ7.00×0.25+0.10-15°	52	7.00	6.30	0.25	0.10	0.35	40	15	65
Φ7.00×0.25+0.18-18°	57	7.00	6.14	0.25	0.18	0.43	40	18	50
Φ7.00×0.25+0.22-16°	58	7.00	6.06	0.25	0.22	0.47	22	16	54
Φ7.00×0.27+0.15-18°	60	7.00	6.16	0.27	0.15	0.42	53	18	60
Φ7.94×0.25+0.18-18°	65	7.94	7.08	0.25	0.18	0.43	40	18	50
Φ7.94×0.25+0.20-18°	66	7.94	7.04	0.25	0.20	0.45	40	18	50
Φ7.94×0.26+0.17-18°	66	7.94	7.08	0.26	0.17	0.43	40	18	50
Φ7.94×0.28+0.20-18°	72	7.94	6.98	0.28	0.20	0.48	40	18	50
Φ7.94×0.30+0.20-18°	76	7.94	6.94	0.30	0.20	0.50	40	18	50
Φ9.52×0.27+0.16-18°	82	9.52	8.66	0.27	0.16	0.43	30	18	70
Φ9.52×0.28+0.12-15°	80	9.52	8.72	0.28	0.12	0.40	53	15	65
Φ9.52×0.28+0.15-18°	83	9.52	8.66	0.28	0.15	0.43	53	18	60
Φ9.52×0.28+0.15-25°	88	9.52	8.66	0.28	0.15	0.43	90	25	65
Φ9.52×0.28+0.20-18°	85	9.52	8.56	0.28	0.20	0.48	25	18	55
Φ9.52×0.28+0.20-18°	88	9.52	8.56	0.28	0.20	0.48	40	18	60
Φ9.52×0.30+0.20-18°	90	9.52	8.52	0.30	0.20	0.50	30	18	60
Φ9.52×0.30+0.20-18°	94	9.52	8.52	0.30	0.20	0.50	53	18	60
Φ9.52×0.34+0.15-25°	104	9.52	8.54	0.34	0.15	0.49	90	25	65
Φ9.52×0.40+0.25-18°	123	9.52	8.22	0.40	0.25	0.65	40	18	60
Φ12.00×0.36+0.25-18°	140	12.00	10.78	0.36	0.25	0.61	40	18	70
Φ12.70×0.35+0.25-18°	155	12.70	11.50	0.35	0.25	0.60	53	18	70
Φ12.70×0.40+0.25-18°	170	12.70	11.40	0.40	0.25	0.65	53	18	70
Φ12.70×0.50+0.25-18°	201	12.70	11.20	0.50	0.25	0.75	53	18	75
Φ12.75×0.36+0.21/0.25-20°	150	12.75	11.53	0.36	0.25	0.61	48	20	70

**Remark:** These are common sizes which the company is making. Any unusual sizes with special requirement can be tailor-made against order.

## DESCRIPTION:

1. Standard Complied: ASTM B-68, GB/T 20928
2. Alloy no.: C12200, TP2
3. Temper: soft drawn or light soft drawn
4. Coil Wt.: 100kg -500 kg





## Specifications: $\Phi 6.00-28.57 \times 0.30-1.50$

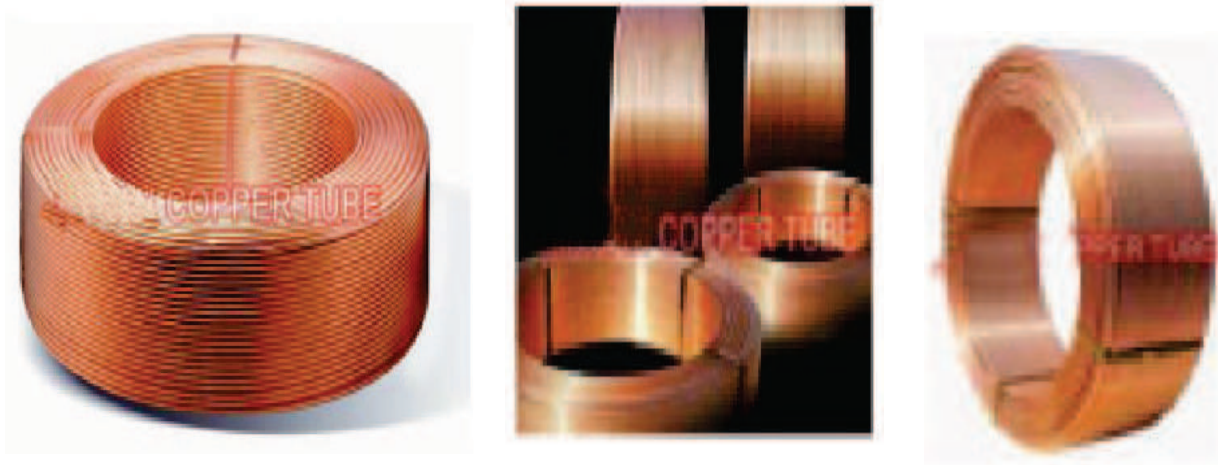
I.D. mm	O.D. mm	Thickness(mm)			Theoretical weight(kg/m)			Hard(Y)			Half hard(MY)			Soft(M)		
		Type			A	B	C	Max.working pressure(MPa)			Max.working pressure(MPa)			Max.working pressure(MPa)		
		A	B	C				A	B	C	A	B	C	A	B	C
5	6	1.0	0.8	0.6	0.140	0.116	0.091	24.23	18.81	13.70	19.23	14.92	10.87	15.85	112.30	8.96
6	8	1.0	0.8	0.6	0.196	0.161	0.124	17.50	13.70	10.05	13.89	10.87	8.00	11.44	8.96	6.57
8	10	1.0	0.8	0.6	0.252	0.206	0.158	13.70	10.77	7.94	10.87	8.55	6.30	8.96	7.04	5.19
10	12	1.2	0.8	0.6	0.362	0.251	0.191	13.69	8.87	6.56	10.87	7.04	5.21	8.96	5.80	4.29
15	15	1.2	1.0	0.7	0.463	0.391	0.280	10.79	8.87	6.11	8.56	7.04	4.85	7.04	5.80	3.99
—	18	1.2	1.0	0.8	0.564	0.475	0.385	8.87	7.31	5.81	7.04	5.81	4.61	5.80	4.79	3.80
20	22	1.5	1.2	0.9	0.860	0.698	0.531	9.08	7.19	5.92	7.21	5.70	4.23	5.94	4.70	3.48
25	28	1.5	1.2	0.9	1.111	0.899	0.682	7.05	5.59	4.62	5.60	4.44	3.30	4.61	3.66	2.72
32	35	2.0	1.5	1.2	1.845	1.405	1.134	7.54	5.59	4.44	5.99	4.44	3.51	4.93	3.66	2.90
40	42	2.0	1.5	1.2	2.237	1.699	1.369	6.23	4.63	3.68	4.95	3.68	2.92	—	—	—
50	54	2.5	2.0	1.2	3.600	2.908	1.772	6.06	4.81	2.85	4.81	3.82	2.26	—	—	—
65	67	2.5	2.0	1.5	4.509	3.635	2.747	4.85	3.85	2.87	—	—	—	—	—	—
80	85	2.5	2.0	1.5	5.138	4.138	3.125	4.26	3.39	2.53	—	—	—	—	—	—
100	108	3.5	2.5	1.5	10.226	7.374	4.467	4.19	2.97	1.77	—	—	—	—	—	—
125	133	3.5	2.5	1.5	12.673	9.122	5.515	3.39	2.40	1.43	—	—	—	—	—	—
150	159	4.0	3.0	2.0	17.335	13.085	8.779	3.23	2.41	1.60	—	—	—	—	—	—
200	219	6.0	5.0	4.0	35.733	29.917	24.046	3.53	2.93	2.34	—	—	—	—	—	—

Note: 1). The max. working pressure means when the working temperature is 65°C, the allowable stress of hard tube is 63MPa, the allowable stress of half hard tube is 50MPa, the allowable stress of soft tube is 41.2MPa.  
2). ND—Nominal internal diameter.  
3). Standard: ASTM B88, EN1057.

**Remark:** These are common sizes which the company is making. Any unusual sizes with special requirement can be tailor-made against order.

## DESCRIPTION:

1. Standard Complied: ASTM B-88, GB/T-18033
2. Alloy no.: C12200, C1220, TP2
3. Temper: hard or half hard
4. Main Specification:  
Outer Diameter: 4mm ~ 152.4mm  
Wall Thickness: 0.41mm ~ 6mm
5. Length: 5.8m or 3m etc



## Specifications

Thickness O.D.	0.28 mm	0.30 mm	0.35 mm	0.40 mm	0.46 mm	0.56 mm	0.60 mm	0.64 mm	0.71 mm	0.76 mm	0.81 mm	0.89 mm	1.00 mm	1.07 mm	1.14 mm	1.22 mm	1.27 mm	1.50 mm	2.00 mm
3.80	○	○	○	○	○	○	○	○	○	○	○	○	○	○	○	○	○	○	○
4.00	○	○	○	○	○	○	○	○	○	○	○	○	○	○	○	○	○	○	○
4.76(3/16in)	○	○	○	○	○	○	○	○	○	○	○	○	○	○	○	○	○	○	○
5.00	○	○	○	○	○	○	○	○	○	○	○	○	○	○	○	○	○	○	○
6.00	○	○	○	○	○	○	○	○	○	○	○	○	○	○	○	○	○	○	○
6.35(1/4in)	○	○	○	○	○	○	○	○	○	○	○	○	○	○	○	○	○	○	○
7.00	○	○	○	○	○	○	○	○	○	○	○	○	○	○	○	○	○	○	○
7.94(5/16in)	○	○	○	○	○	○	○	○	○	○	○	○	○	○	○	○	○	○	○
8.00	○	○	○	○	○	○	○	○	○	○	○	○	○	○	○	○	○	○	○
9.00	○	○	○	○	○	○	○	○	○	○	○	○	○	○	○	○	○	○	○
9.52(3/8in)	○	○	○	○	○	○	○	○	○	○	○	○	○	○	○	○	○	○	○
10.00	○	○	○	○	○	○	○	○	○	○	○	○	○	○	○	○	○	○	○
12.00	○	○	○	○	○	○	○	○	○	○	○	○	○	○	○	○	○	○	○
12.70(1/2in)	○	○	○	○	○	○	○	○	○	○	○	○	○	○	○	○	○	○	○
14.00	○	○	○	○	○	○	○	○	○	○	○	○	○	○	○	○	○	○	○
15.00	○	○	○	○	○	○	○	○	○	○	○	○	○	○	○	○	○	○	○
15.88(5/8in)	○	○	○	○	○	○	○	○	○	○	○	○	○	○	○	○	○	○	○
16.00	○	○	○	○	○	○	○	○	○	○	○	○	○	○	○	○	○	○	○
18.00	○	○	○	○	○	○	○	○	○	○	○	○	○	○	○	○	○	○	○
19.05(3/4in)	○	○	○	○	○	○	○	○	○	○	○	○	○	○	○	○	○	○	○
20.00	○	○	○	○	○	○	○	○	○	○	○	○	○	○	○	○	○	○	○
22.00	○	○	○	○	○	○	○	○	○	○	○	○	○	○	○	○	○	○	○
22.23(7/8in)	○	○	○	○	○	○	○	○	○	○	○	○	○	○	○	○	○	○	○

**Remark:** Sizes with mark "○" indicate those are common sizes which the company is making. Any unusual sizes with special requirement can be tailor-made against order.

## DESCRIPTION

1. Standard Complied: ASTM B-280, EN-12735, JISH-3300, GB/T-17791
2. Alloy no.: C12200, C1220, TP2
3. Temper: soft drawn or light soft drawn
4. Coil Wt.: 100kg - 500 kg
5. Main Specification: Outer Diameter: 4mm - 15.88mm, Wall Thickness: 0.28mm - 1.27mm





**45° ELBOW (CXF)**  
15 22 28 35 42 54  
67 76 108 133 159 219



**MALE ADAPTER**  
1/2"x15 3/4"x22  
1"x28 1 1/4"x35 1 1/2"x42



**REDUCING COUPLING (CxX)**  
15x12 22x25  
28x15 28x22 35x28



**EQUAL COUPLING**  
15 22 28 35 42 54  
67 76 108 133 159 219



**90° ELBOW (CxX)**  
15 22 28 35 42 54  
67 76 108 133 159



**45° ELBOW (CxX)**  
15 22 28 35 42 54  
67 76 108 133 159



**CxXxXxX REDUCING CROSS**  
22.22x15.15  
28.28x22.22 35.35x28.28  
42.42x35.35 54.54x42.42



**CxXxXxX EQUAL CROSS**  
15 22 28 35  
42 54 67 76 108



**EQUAL TEE (CxXxXxX)**  
15 22 28 35 42 54  
67 76 108 133 159 219



**REDUCING TEE (CxXxXxX)**  
15.10.15 15.15.10 22.22.15  
22.15.22 28.22.28 28.28.22  
35.22.35 42.42.35 42.42.28  
54.54.42 67.67.54 76.76.67  
108.108.76 133.133.108  
159.159.133 219.219.159



**180° ELBOW (CxX)**  
15 22 28 35 42 54 67



**CAP**  
15 22 28 35 42 54



**180° OVERBRIDGE**  
15 22 28 35



**90° ELBOW (CxX)**  
15 22 28 35 42 54  
67 76 108 133 159



**EQUAL THREAD TEE (CxXxXxX)**  
22x 28x 35x 42x 54x  
67x 76x 108x 133x 159x



**COPPER FEMALE ADAPTER**  
1/2"x15 3/4"x22 1"x28  
1 1/4"x35 1 1/2"x42 2"x54



**FEMALE ADAPTER**  
1/2"x15 3/4"x22 1"x28  
1 1/4"x35 1 1/2"x42 2"x54



**90° FEMALE EQUAL ELBOW**  
1/2"x15 3/4"x22 1"x28  
1 1/4"x35 1 1/2"x42



**COPPER-PLATED STEEL FLANGE**  
15 22 28 35 42 54 67 76  
108 133 159



**FULL COPPER MALE FLANGE**  
1/2 3/4 1 1/4 1/2 2 2 1/2 3 4



**FULL COPPER EQUAL FLANGE**  
15 22 28 35 42 54 67 76  
108 133 159



**COPPER-PLATED MALE STEEL FLANGE**  
1/2 3/4 1 1/4 1/2 2 2 1/2 3 4



**COPPER-PLATED FEMALE STEEL FLANGE**  
1/2 3/4 1 1/4 1/2 2 2 1/2 3 4

ITS – INTETEK TESTING SERVICES  
ITS – INTERTEK TESTING SERVICES  
KMAR  
STANDARDS MARK  
STANDARDS MARK  
NFS INTERNATIONAL  
TUV NORD

ASTM B88-99  
ASTM B280-99  
ISO1400:2004  
AS 1432 - Quality Assurance  
AS – NZS 1571  
ANSI/NSF 61  
K1159/R06  
K1161/R06  
K1160/R06



Main Office :

**WOLFrost International LLP**

India & Far East

Regional Sales & After Sales Service Contact :

**WOLF International - SAIF ZONE**

Middle East & North Africa

for more information VISIT  
**[www.wolfmep.com](http://www.wolfmep.com)**

Contact :  
**[info@wolfmep.com](mailto:info@wolfmep.com)**