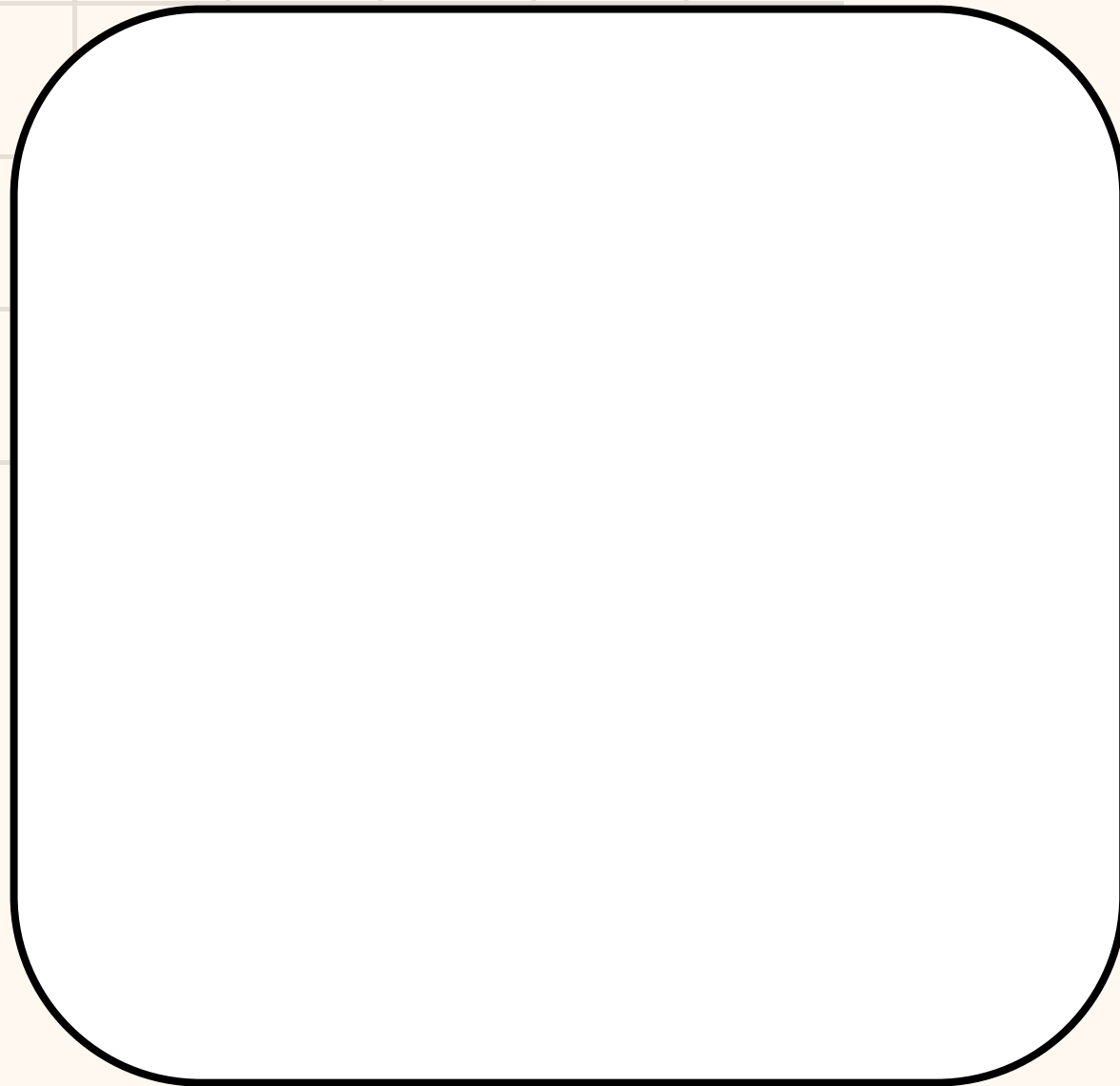


GBM #1



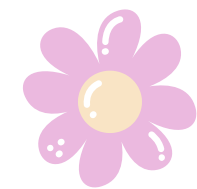
SIGN IN



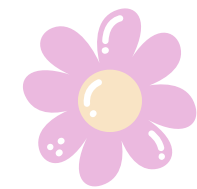
GROUPME

IG: @UFNEUROCLUB

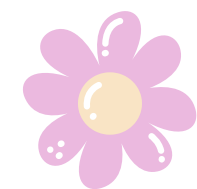
OBJECTIVES:



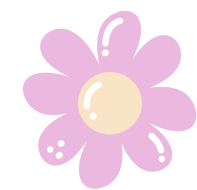
WHO ARE WE?



MEET THE E-BOARD



UPDATES



SPEAKER

UF NEUROSCIENCE CLUB

We are a student-directed club dedicated to exploring the field of neuroscience and providing a community for those interested in the subject, no matter their background.

We aim to...

- **Provide information and aid to members regarding current research opportunities, career building in the neuroscience field, & more**
- **Cultivate a warm and welcoming environment for anyone in the neurofam**
- **Share our passion through community outreach and volunteering**



UF NEUROSCIENCE CLUB

Spring 2025 GBM Schedule

Time: 7 PM - 8 PM

GBM #1 - 1/23/2025 (Zoom)

GBM #2 - 2/4/2025 (LIT0101)

GBM #3 - 2/18/2025 (LIT0101)

GBM #4 - 3/4/2025 (LIT0101)

GBM #5 - 3/25/2025 (LIT0109)

GBM #6 - 4/8/2025 (LIT0109)

CAITLIN BRENNAN

President | she/her | BCN

About Me:

I'm a senior on a Pre- PA track! I am majoring in psych- BCN and minoring in Deaf and Hearing Sciences. Outside of school, I LOVE going to yoga classes (10/10 recommend yoga pod), hiking, traveling, reading, and going concerts!

Involvements:

- RA in Dr. Erica Dale's Lab
- University Scholars Cohort 2024-2025
- Volunteer at the Norman Fixel Institute



Yael Tawil

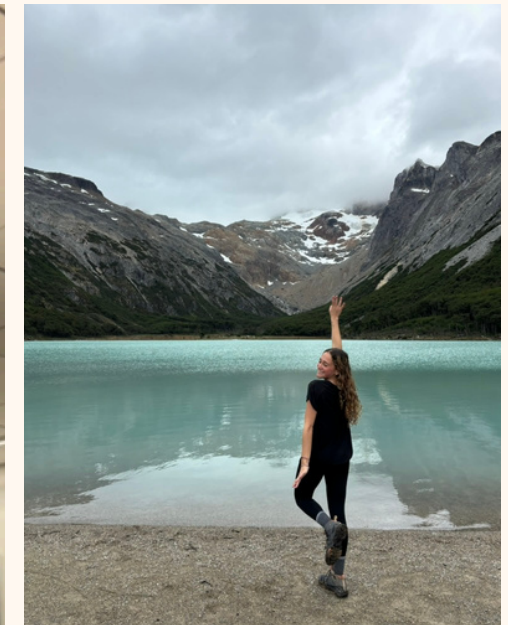
Prof Dev + Research Chair | pronouns | Major(s)

About Me:

Hi! I'm a Senior :(studying BCN with a minor in Disabilities in Society. Some things I love: traveling, hiking, the beach, avocado toast, FIT classes and Gracie Abrams (and ofc neuroscience).

Involvements:

- Dale Lab
- FYF
- Conversations to Remember



SOPHIA MELILLI

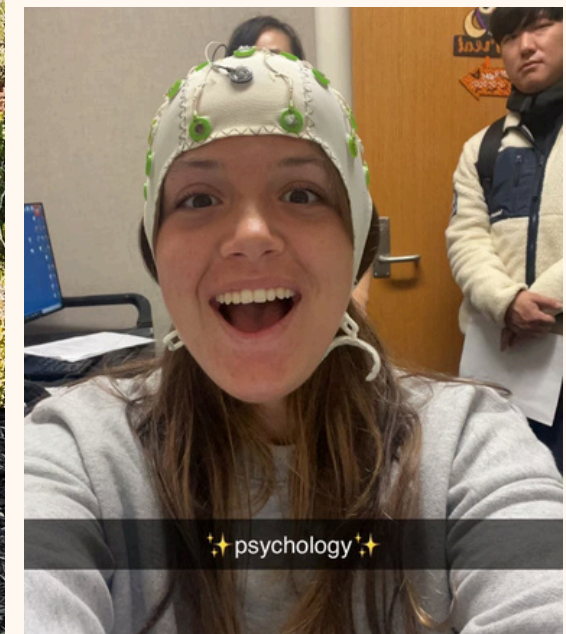
Newsletter Chair | she/her | BCN

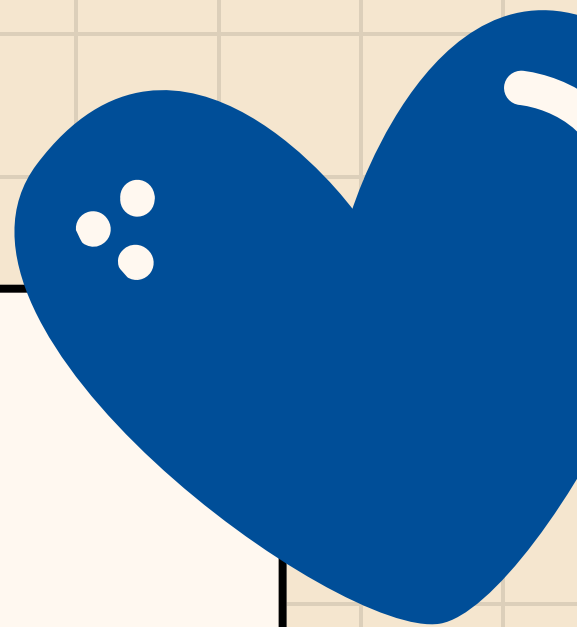
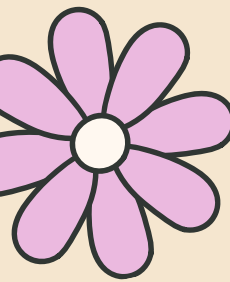
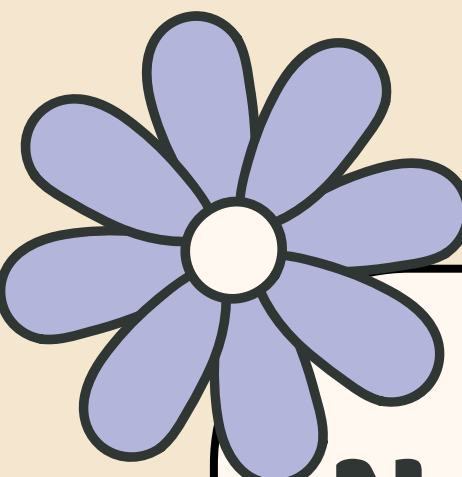
About Me:

Hey hey! I am a Sophomore studying BCN on the pre-PA track. I love to read, work out, play soccer and pickleball, ski, and paint! I LOVE country music and food!!

Involvements:



- PSO
- MediGators Mentorship Program
- HCA Volunteer





PRESIDENT UPDATES

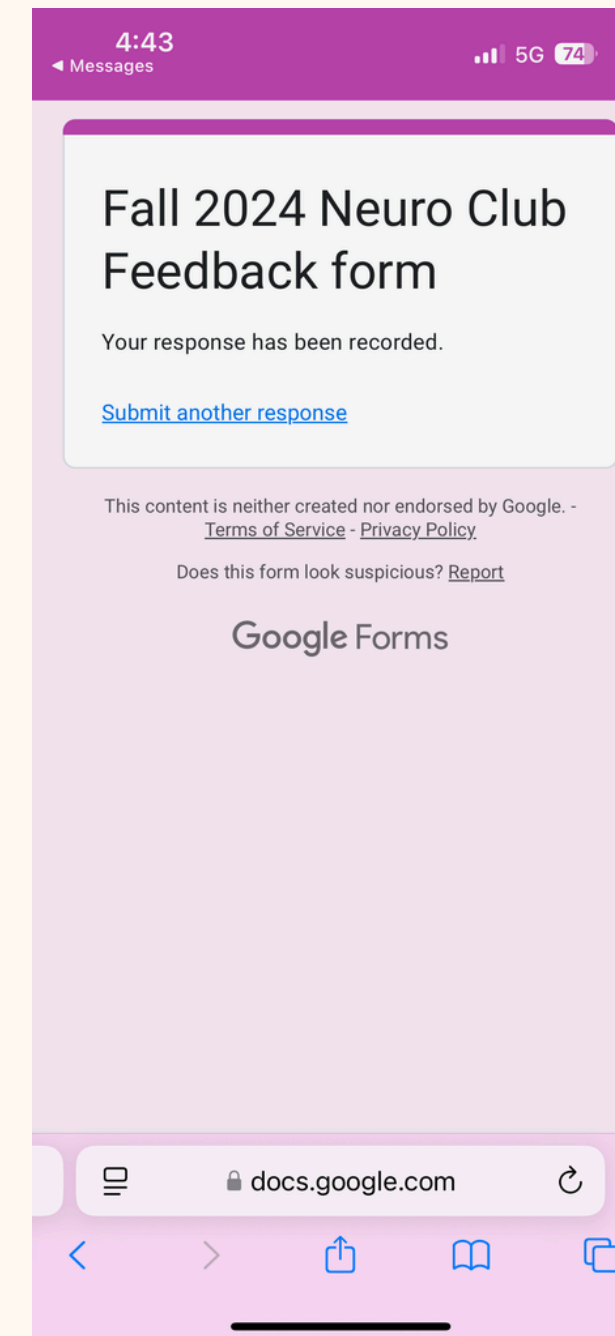
Newsletter

- Our first newsletter of the semester was sent out yesterday!
 - For the rest of the semester, newsletters will be sent biweekly on Sundays.
 - What's in the newsletter?
 - Event updates, member highlights, professional opportunities, and more!
 - Sign-Up:
 - If you'd like to receive the newsletter, [please fill out this form.](#)
 - If you already signed up last semester, no need to sign up again!
- 
- 

PRESIDENT UPDATES

Feedback Form

- If you were in Neuro Club last semester, we'd love to hear your feedback! The form is completely anonymous ([Link to form](#))
- Point opportunity:
 - After completing the form, email a screenshot (like the example shown on the right) to caitlinbrennan@ufl.edu, and you'll receive 1 Universal Point!



PRESIDENT UPDATES

NCF SfN Annual Conference

- This is an amazing opportunity to learn about neuroscience research at UF!
- Date: February 7th, 2025 from 9 am- 4:30 pm
- Point opportunity: If you volunteer, attend a presentation/ event, or present a poster you will receive 1 Universal Point!
 - [Sign up to volunteer here](#)
 - Please take a selfie of yourself volunteering, attending a presentation/event, or presenting a poster and email it to caitlinbrennan@ufl.edu to receive your point
 - You can only earn 1 universal point from this conference!



The poster for the NCF SfN 15th Annual Conference is a vertical rectangular graphic. The top half has a dark blue background with the conference title in white. The bottom half is split into a white left side for the speaker and an orange right side for the schedule. The speaker's name, photo, and topic are on the left. The schedule of events is on the right. Logos for the NCF SfN and the University of Florida are also present.

NCF SfN 15th Annual Conference

FRIDAY, FEBRUARY 7TH, 2025

DR. GEOFFREY SCHOENBAUM



"The orbitofrontal cortex, cognitive maps, and schemas"

UF Evelyn F. & William L. McKnight Brain Institute
UNIVERSITY of FLORIDA

SCHEDULE

- Data Blitz** - HPNP Auditorium 1404
09.00 am - 10.00 am
- Panel Discussion** - HPNP Auditorium 1404
10.00 am - 11.00 am
- Keynote Address** - HPNP Auditorium 1404
11.00 am - 12.00 pm
- Lunch** - Biomedical Sciences Building
12.00 pm - 01.00 pm
- Poster Session** - HPNP Atrium
01.00 pm - 03.00 pm
- Awards** - HPNP Auditorium 1404
03.00 pm - 03.30 pm
- Reception** - HPNP Atrium
03.30 pm - 04.30 pm

JULIA DEMASI

IVP | she/her | BCN

About Me:

I'm a 4th year pre-med student from Sarasota, FL majoring in BCN, and double minoring in Spanish and Health Disparities in Society. For fun I love intramurals, traveling, reading, thrifting, literally all crafts.

Involvements:

- BLaB Lab
- Red Cross DAT responder
- TA for AGR3303



ABBY MARTON

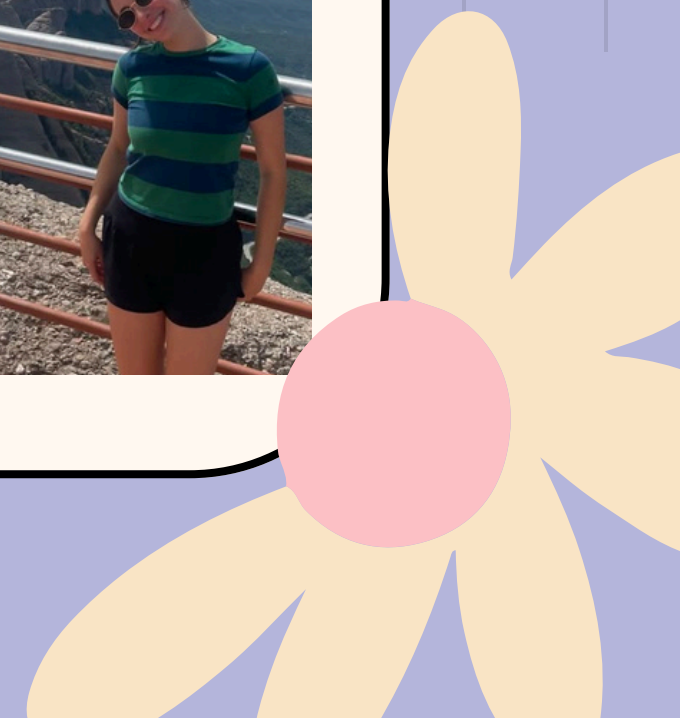
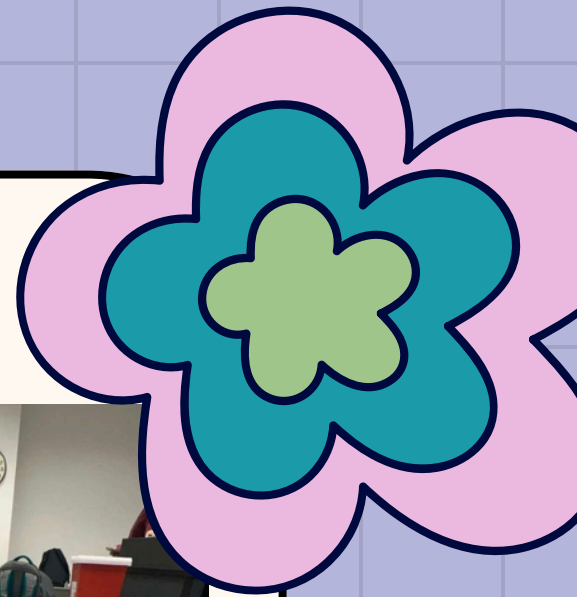
Social Events Chair | she/her | BCN

About Me:

I am a junior from Parkland, FL majoring in BCN with a minor in Health Disparities. My 3 main passions are thrifting, food, and RuPaul's Drag Race. Fun Fact: Stanley Milgram is my great uncle!

Involvements:

- RIISC Lab
- ¡Chévere! Lab
- GEMS (Girls Empowered by Math and Science)



NATASHA BENZADON

Peer Mentorship Chair | she/her | Psychology

About Me:

Hi everyone! I'm a junior from Miami, FL. I love traveling, yoga, concerts, hiking, and skiing— pretty much anything that involves music or spending time in nature :)

Involvements:

- TA for CLP3144
- Delta Phi Epsilon
- Students for Sensible Drug Policy



IVP UPDATES

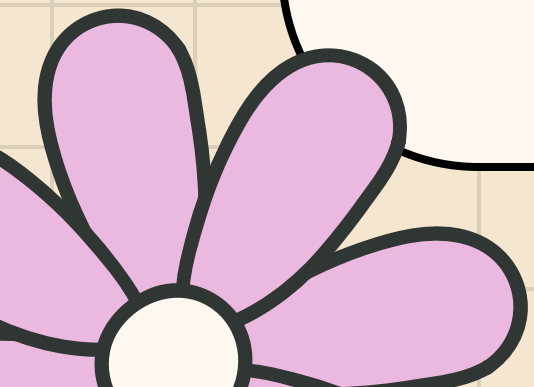
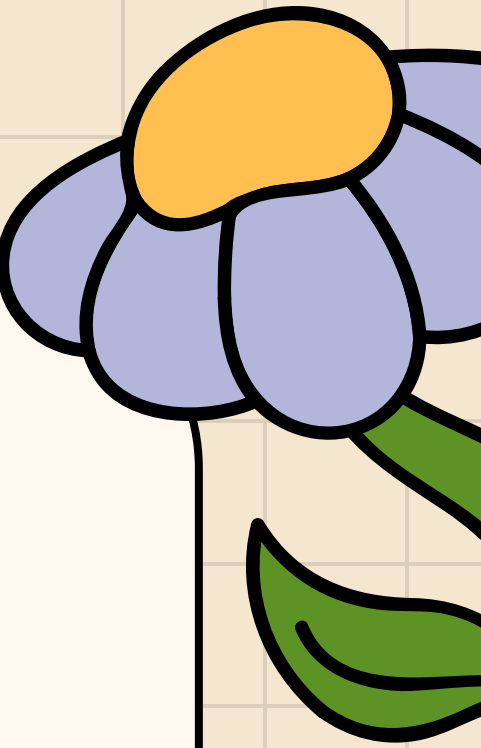
Peer Mentorship Program Overview:

For new members:

- Get to know more of your neuro-family through their get to know me slides and a week of events!
- Earn 2 universal points
- Attend exclusive PMP-only events
- Leadership opportunity

For returning PMP members:

- If you would like to participate again in the PMP with your match from last semester, your mentor **must complete the binding form and include your name!**
- You will receive the same benefits, but do not need to complete the Introduction slides or the match form, and reveal attendance is not mandatory.



PEER MENTORSHIP SCHEDULE (2/3-2/7)

MON:

**Introduction
Slides due
5pm**

TUES:

**Slime 'n
Stress Balls
6-7pm
LIT0125**

**1 Social
Point**

WED:

**Hot
Chocolate
Chat
5:30-6:30pm
Plaza of the
Americas**

1 Social Point

THURS:

**Reitz Pottery
Painting
6:30-7:30pm
Reitz Art Studio**

1 Social Point

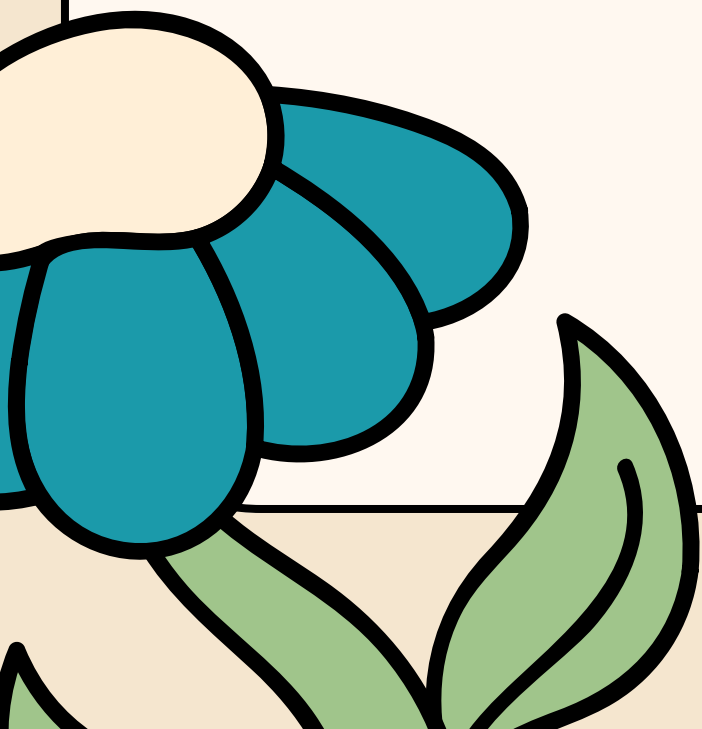
Sign up [here](#)

FRI:

**Match
Preference
Form due
5pm**

MON:

**Reveal!
6:30-7:30pm
LIT0109**

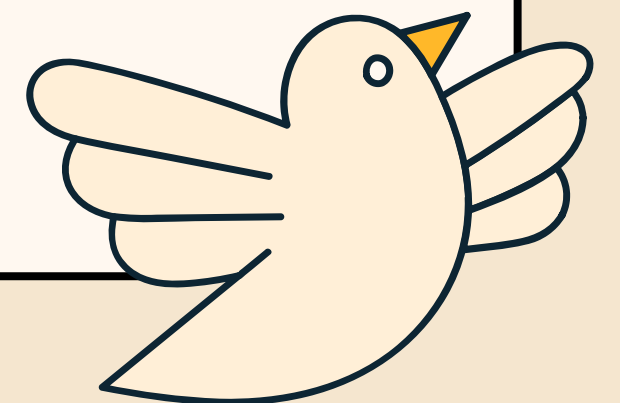


IVP UPDATES



Peer Mentorship Week Requirements...

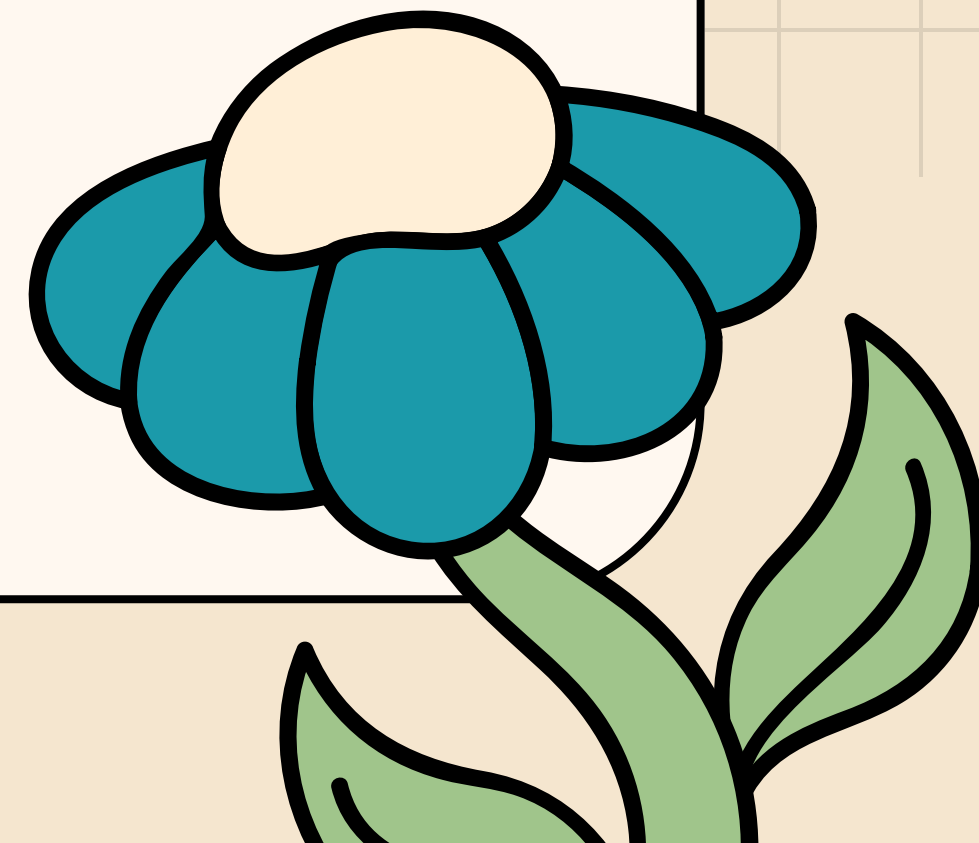
- Must complete the binding [form](#) by 1/28 at 5pm
- Must complete your Introduction slides by 2/3 at 5:00pm.
- If you are new to the program and being matched with a mentor/mentee, you **MUST** attend reveal, 2/10 at 6:30pm.
- After Peer Mentorship Week, you must complete 2 check-ins with your mentee/mentor by the assigned deadlines.



IVP UPDATES

Study Social

- When: Tuesday, January 28th from 2-4pm
- Where: Library West Room 229
- Why: Start the semester strong and come lock in with the neurofam!
- Points: 1 social point



HAILEY VASQUEZ

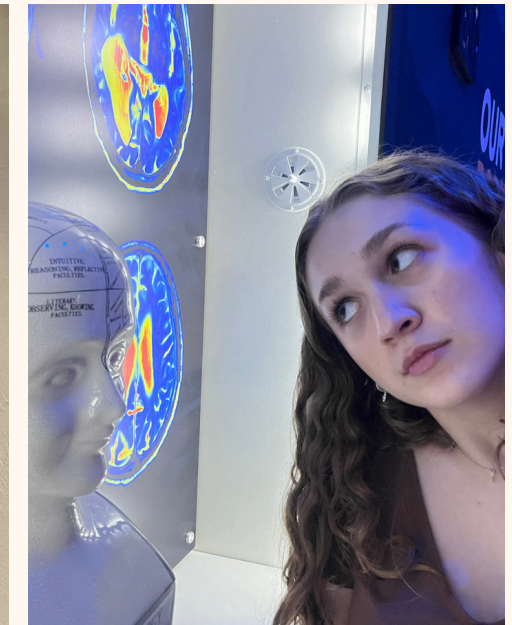
EVP | she/her | BCN + Linguistics

About Me:

Hello hello! I am a 3rd year from Coconut Creek, FL. I love reading (historical fantasy on top!), music, thrifting, and Chili's

Involvements:

- BLaB lab RA
- TA for EEX2000
- Work (live tbh) at Recsports



JENNIFER KANG

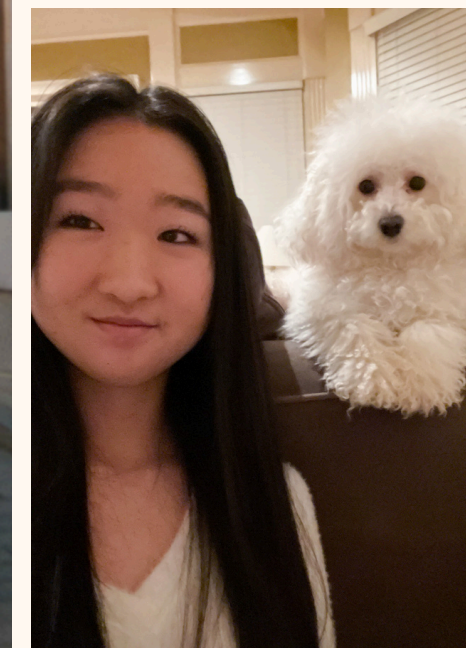
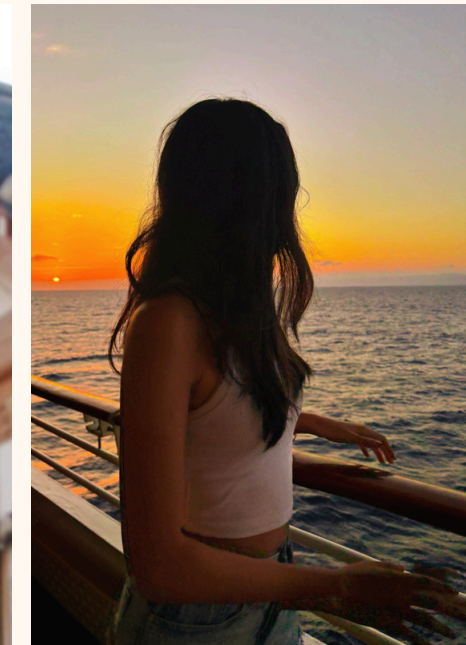
Outreach Chair | she/her | BCN and Bio (Preprof)

About Me:

Hi everyone! I am a second-year from Atlanta, Georgia! I love watching new movies, shopping, cruises, and skiing!

Involvements:

- RA in the Knackstedt Lab
- Shands volunteer
- SAO tour guide



ANVITHA DHULIPALA

Outreach Chair | she/her | Microbiology/Bioinformatics

About Me:

Hi! I'm a second-year on the pre-med track! I love staying active (pickleball, running, & more!) and trying new things (especially food and cafes)

Involvements:

- Khoshboeui Lab @ MBI
- Medical Scribe in the ED
- Shands childlife volunteer



EVP UPDATES

Tabling!

- When: Tuesday, January 28th from 10-1pm
- Where: Turlington
- What: Join us to promote the Neuro Club to other UF students!
 - even if you have never tabled/been in the club before you're more than welcome to come out :)))
- Points: 1 outreach point
- Sign Up: [use this link !!](#)

EVP UPDATES

Valentine's for Patients

- When: Friday, January 31st from 2-3pm
- Where: Matherly 0003
- What: Come out to make Valentine's cards to donate to those at Shands hospital!
- Points: 1 outreach point
- Sign Up: [use this link !!](#)



CLAUDIA MESSINA

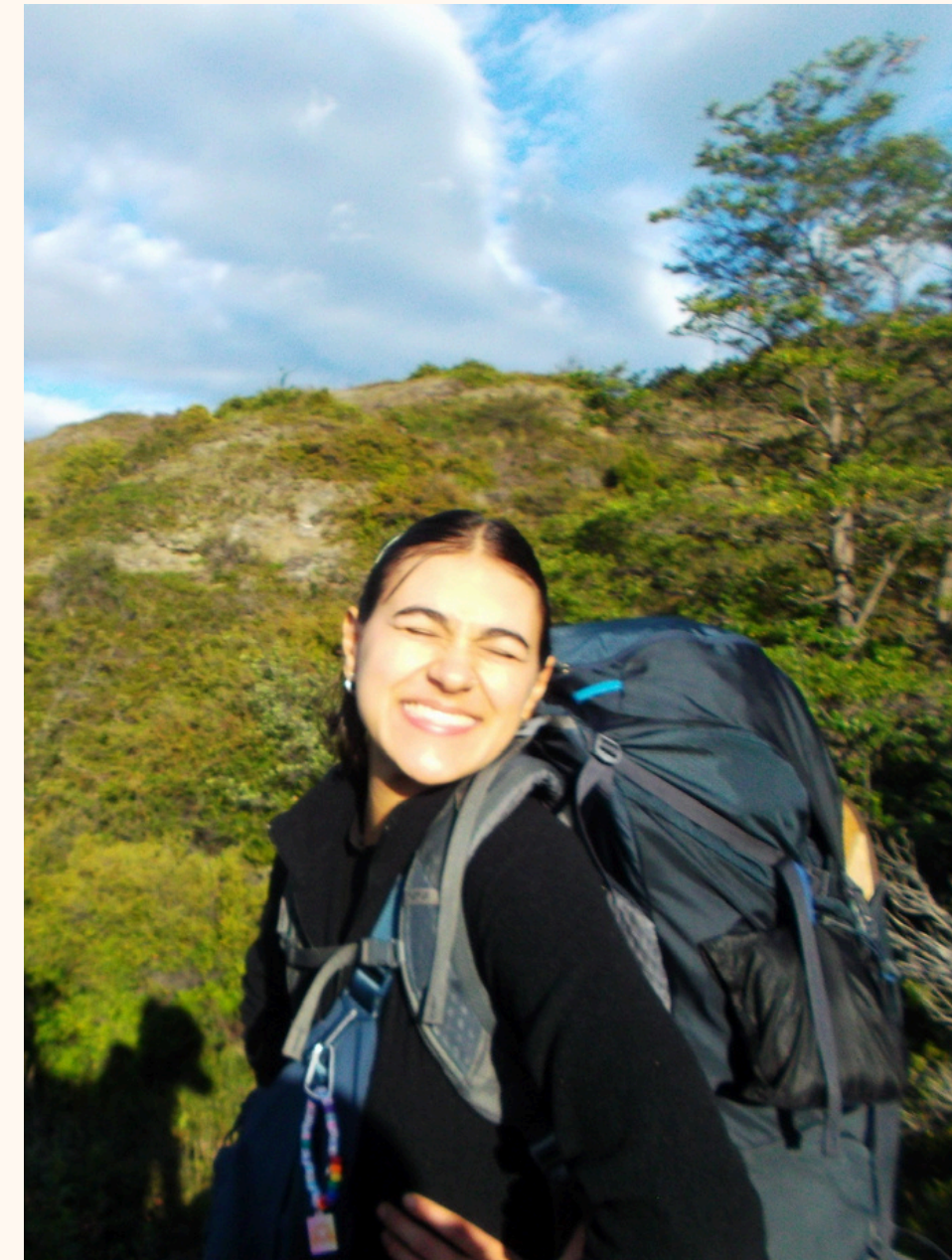
Treasurer | she/they | Psychology BA major

About Me:

- Junior
- Oakton, VA
- Love being outdoors, reading, raving, traveling, & drawing

Involvements:

- Volunteer for Dr. Lisa Merlo, compiling medical student wellbeing reports
- Practicing RBT at Behavior Systems Learning



SHREYA KALARIKKAL

Fundraising Chair | she/her | Psych BCN

About Me:

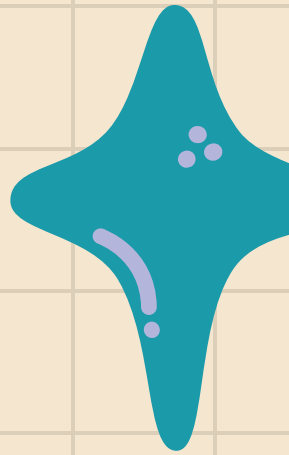
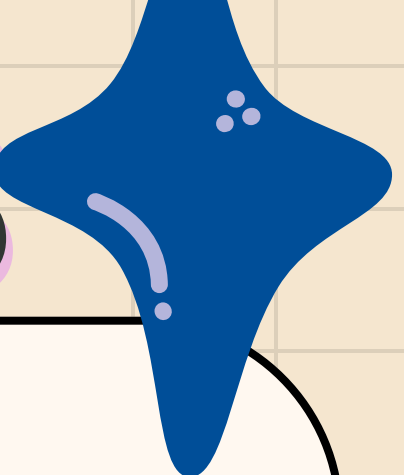
Hi!! I'm a first year Psych BCN major on the pre med track. I love traveling, reading, and learning new things like crocheting and rock climbing!

Involvements:


- CURBS ambassador
- Gatornatyam dancer



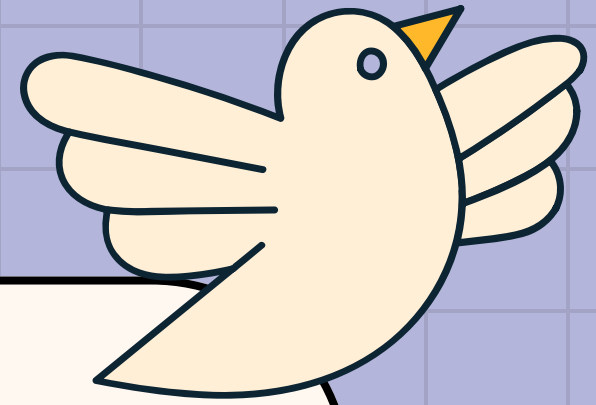
TREASURER UPDATES



fundraising point opps!

- \$1 stickers! (1 point)
 - We will be selling them at tabling next Tuesday and at our next GBM on 2/4
 - Merch raffle!! (1 point)
 - \$5 to enter (please venmo, @ufneuro, to be entered
 - Accepting entries until February 2nd, the Sunday before next our next GBM
 - Wheel will be spun at our next GBM to determine the winners!
- 

MADELEINE MARTIN



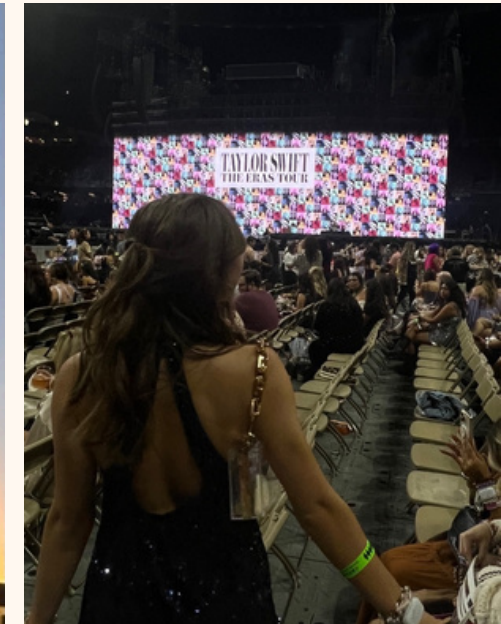
Secretary | she/her | Bio and BCN

About Me:

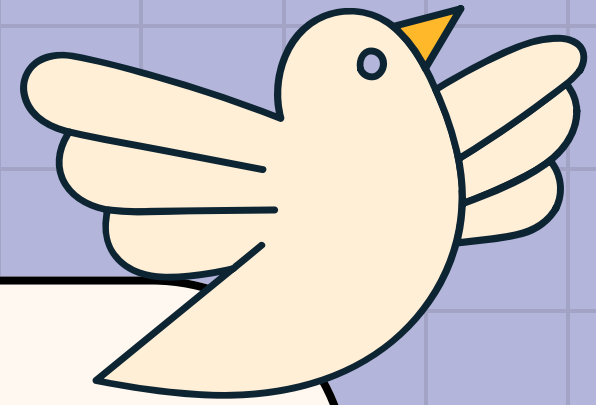
I am a sophomore majoring in Biology and Psych BCN on the pre-med track from Louisiana! I love being active and listening to artists like Taylor Swift, Clairo, and Lizzy McAlpine. I am always looking for the best food in Gainesville so send me any recommendations!

Involvements:

- CHM2046 TA
- Shands Volunteer
- SAAND



BECKY GROBLER



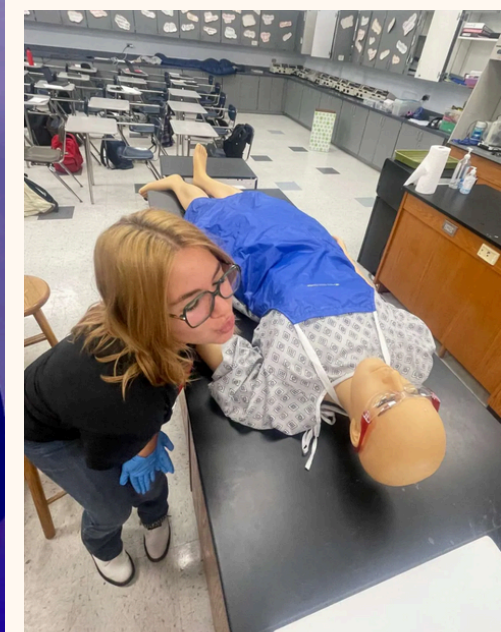
PR Chair | She/Her | Bio and BCN

About Me:

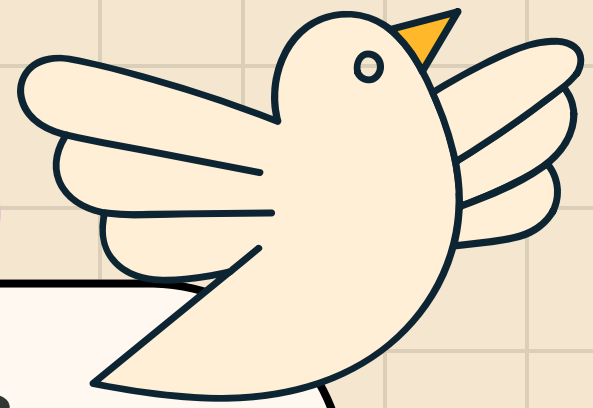
- I am from Boca Raton, FL
- The class I am most excited for this semester is Social Psych!
- My favorite food is sushi :)

Involvements:

- UF Women's Rugby
- MentorGNV



SECRETARY UPDATES



Membership

- Our club is open to all undergraduate students! We do not have any dues or requirements, but we do offer active membership!
- Perks include: sheep brain dissection, discounts on merch, a tour of the MBI, end of semester banquet, and more!

Active Membership

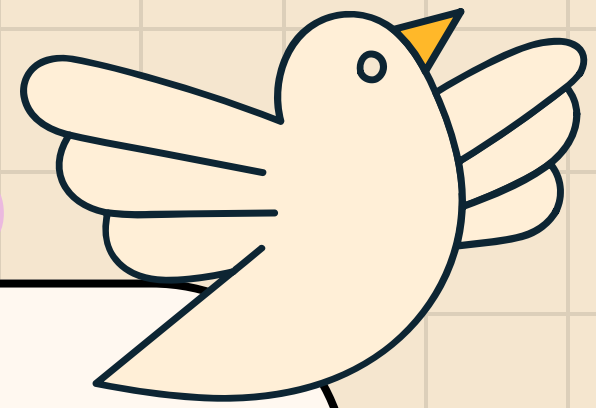
- Point Requirements
 - 3 GBM
 - 2 Social
 - 2 Outreach
 - 2 Fundraising

Universal Points

- Universal points can count or fall under ANY category!
- There will be multiple opportunities throughout the semester

If you ever have any questions about points (including not being able to make GBMs), please come talk to me!

SECRETARY UPDATES



Resources

- [Check your points status here!](#)
- [Join our Google Calendar here!](#)
 - [How to add Gcal events to Apple Calendar](#)
- DM me on GroupMe and fill out [this form](#) if you can't attend our normal GBM time



Member of the Month

- We are starting a new series to highlight our awesome members! Nominate your friends, mentors, mentees, or any club members so we can celebrate them together!
- [Can also use this link to fill out form](#)

**Fill out this form to
nominate someone for
member of the month!**

CALENDAR (1/27-1/31)

MON

TUES

WED

THURS

FRI

**Tabling
Turlington Plaza
10AM-1PM
1 Outreach Point**

**Study Social
Lib West Rm. 229
2-4PM
1 Social Point**

**PMP Binding Form
Due at 5PM**

**Valentines for
Patients
2-3PM
Matherly 003
1 Outreach
Point**

CALENDAR (2/3-2/7)

MON

**PMP SLIDES
DUE 5pm**

TUES

**Slime 'n
Stress Balls
6-7PM
Lit0109
1 Social Point**

**GBM #2
7-8PM
LIT
1 GBM Point**

WED

**Hot Chocolate
and Chat
5:30-6:30PM
Plaza of the
Americas

1 Social Point**

THURS

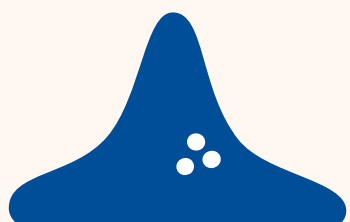
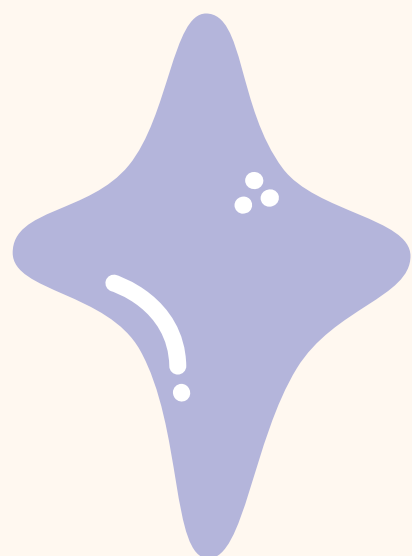
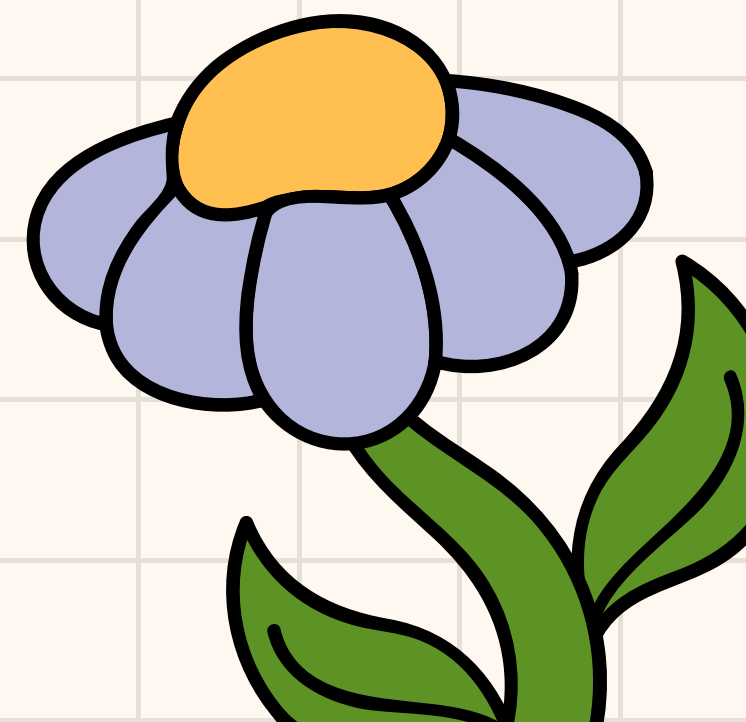
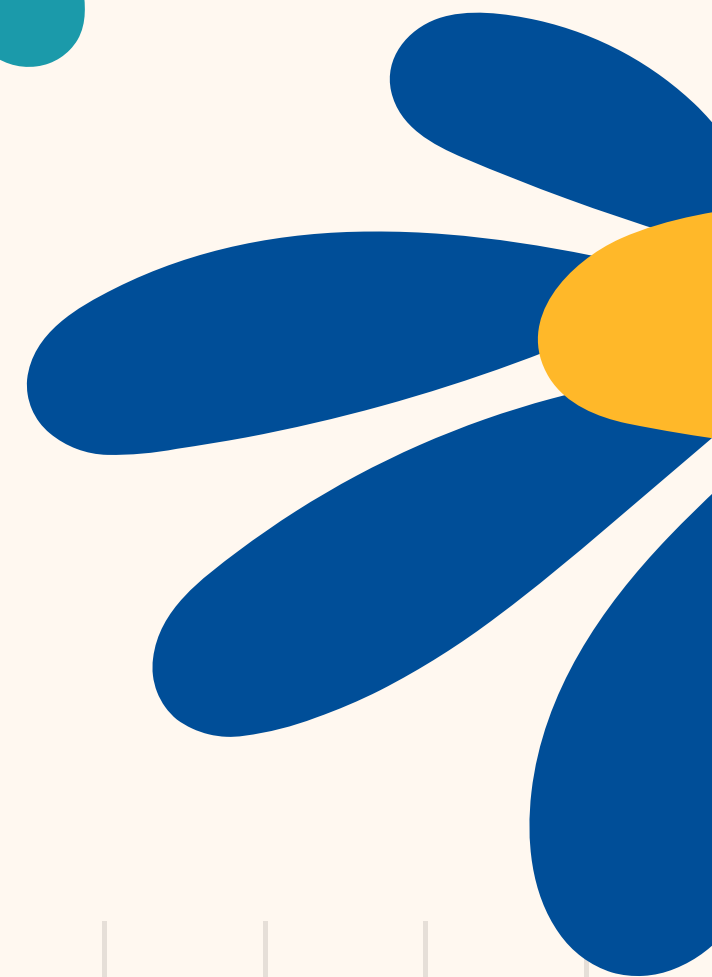
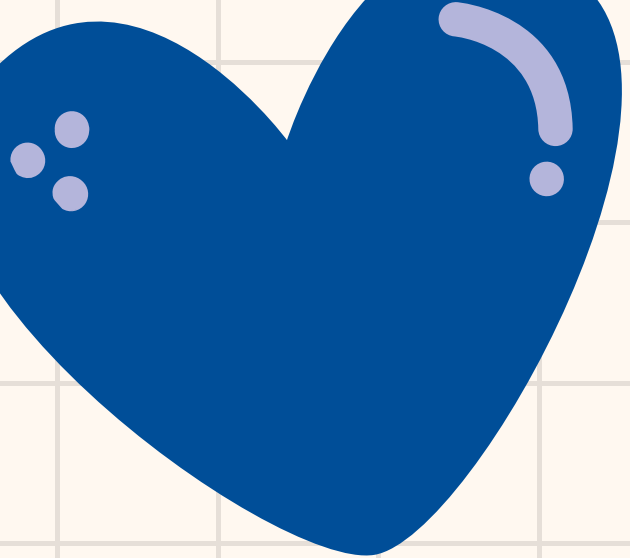
**Reitz Pottery
Painting
6:30-7:30PM
Reitz Union
1 Social Point

[Sign up here](#)**

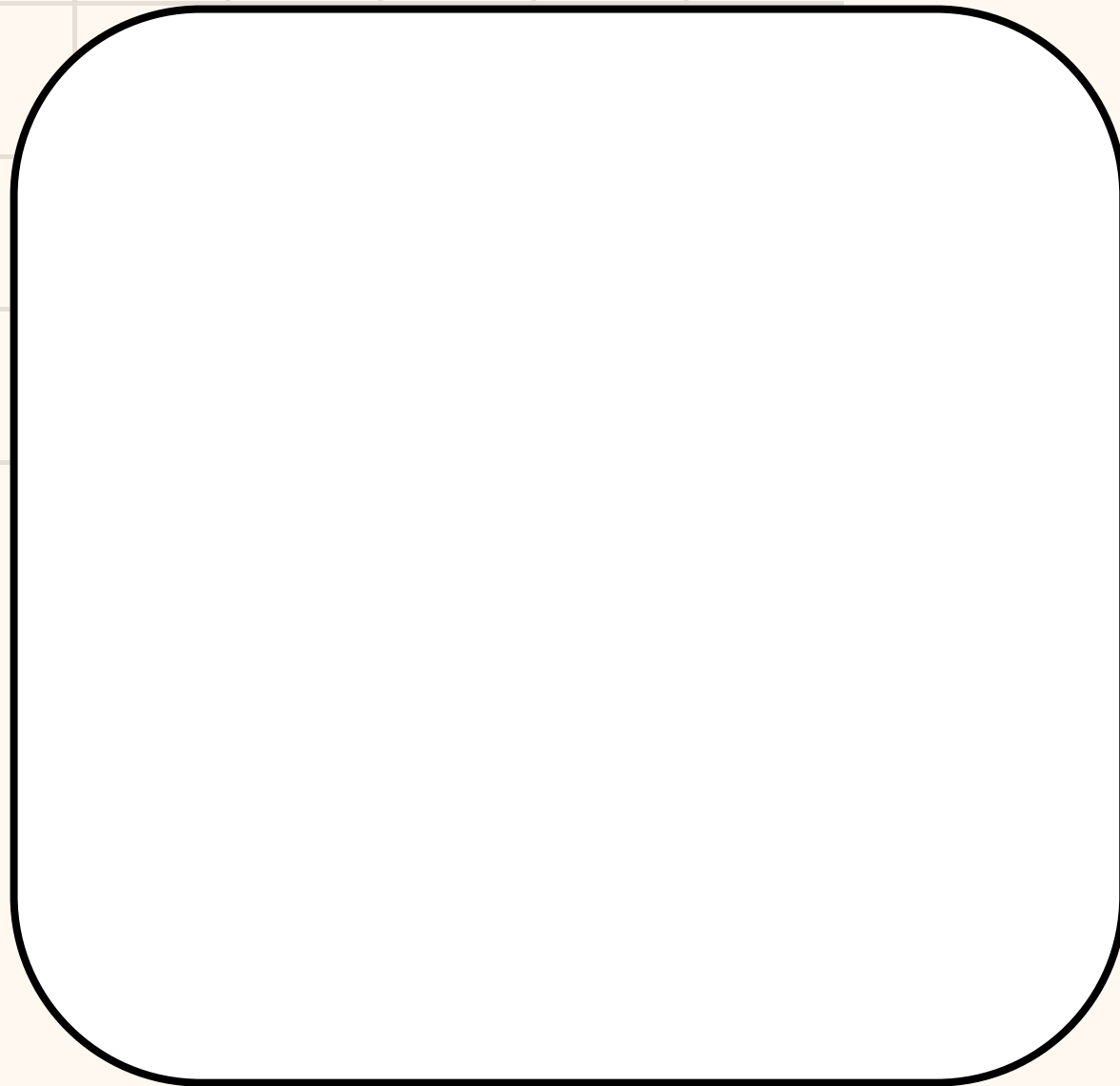
FRI

**MATCH
PREFERENCE
FORM DUE
5pm**

CURBS!



GBM #1



SIGN IN



GROUPME

IG: @UFNEUROCLUB