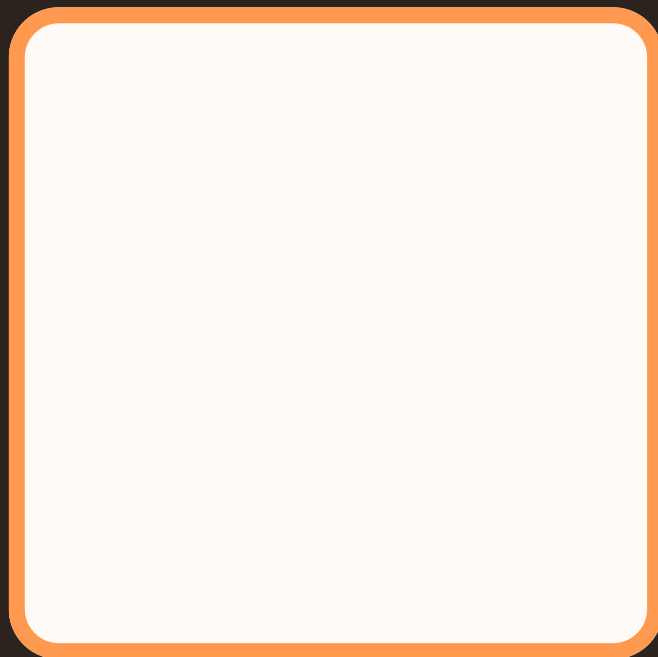


GBM #5



SIGN IN

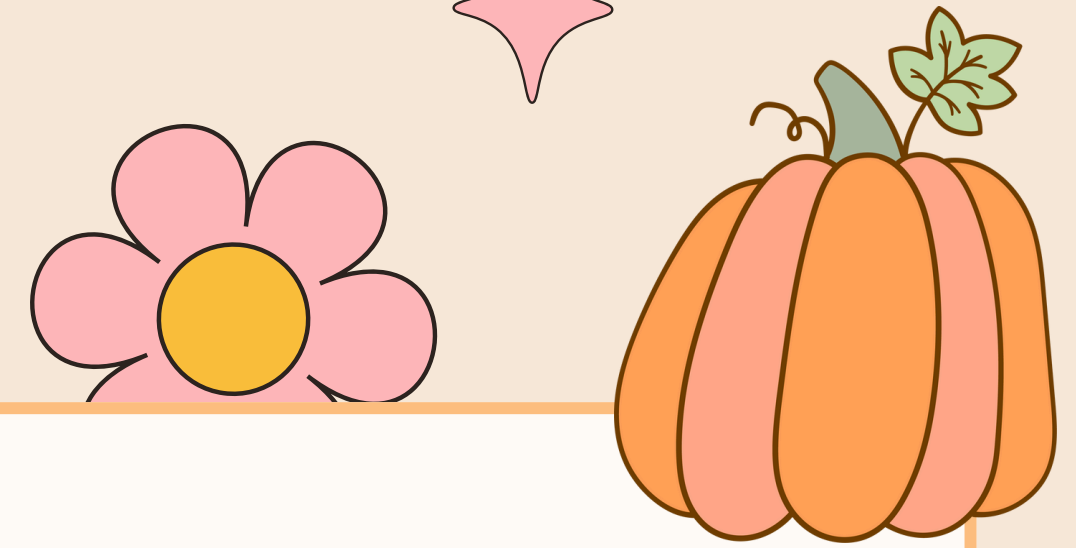


GroupMe



INSTAGRAM

PRESIDENT UPDATES:



Equal Access Clinic Mini Medical School

- The Equal Access Clinic Network (EACN) is the UF College of Medicine's entirely student-run, free clinic serving Alachua County's underserved community
- Mini Medical School allows pre-medical students to experience a day in the life of medical students and physicians through interactive, hands-on workshops and networking opportunities with medical professionals
- **Date:** Saturday, November 8th, 2025
- **Time:** 8:00am - 3:00pm
- **Location:** Harrell Medical Education Building
 - **Address:** 1104 Newell Dr, Gainesville, FL 32601
- **\$25 sign up fee, all proceeds help keep EACN up and running!**



PRESIDENT UPDATES:

McNair Scholars Program Accepting Applications!

- **Apps due Nov 16th**
- **Designed for undergraduate students with the goal of earning a PhD**
- **Provide training, mentorship, resources, and opportunities to help first-generation and income eligible students conduct research**



PRESIDENT UPDATES:

REU 101's

- **What:** Come join us to learn what an REU is, their benefits, tips on where to find opportunities, how to create a strong application, and more!
- **Where:** Matherly Hall Room 0115
- **When:** Nov 5th 6:30-7:30 pm (tomorrow!)
- **Point:** 1 Universal Point
- **Sign up:** use [this link!](#)



PRESIDENT UPDATES:

Med x PhD Student Panel

- **What:** Join us to hear from med and PhD students regarding the application processes and experiences in their respective programs here at UF!
- **When:** Wednesday, November 12th 6-7pm
- **Where:** McKnight Brain Institute LG-101A
 - Meet in Turlington at 5:40pm to walk there together!
- **Point:** 1 Universal point
- **Sign Up:** use [this link!](#)
 - please note that for logistical purposes, by signing up you are making a commitment to attend. if you can no longer attend please message me **AT LEAST 48 HOURS** in advance and i will remove your name from the list



IVP UPDATES:

Mindfulness Sunset Walk

- **When:** ***TIME CHANGE*** Thursday, November 6th from 5:15pm-6:15pm
- **Where:** From the Reitz to the Bat Houses!!!
- **What:** Come on a scenic walk with the Neuro Fam while we discuss why using mindfulness techniques and exercise is good for your brain
- **Point:** 1 Social Point
- **Sign Up:** [Link](#)



IVP UPDATES:

PJ Night and Sleep Cycles Talk

- **When:** Monday, November 17th from 6:30pm-7:30pm
- **Where:** TBD
- **What:** Get cozy and enjoy some hot chocolate while we discuss the brain during sleep!
- **Point:** 1 Social Point
- **Sign Up:** [Link](#)



IVP UPDATES:

Scan Here to Subscribe to our Newsletter

- **Stay up to date on upcoming events**
- **Access feedback forms**
- **Links to exclusive resources**
- **AND MORE!!!!**



IVP UPDATES:

Member of the Month

- **Nominate your friends, mentors, mentees, or any**
- **club members so we can celebrate them together!**
- **The member of the month will receive 1 Universal Point!**
- **Scan here to fill out form:**



EVP UPDATES:

11/12 Tabling

- **When: Wednesday, November 12th, 10-1**
- **Where: Turlington**
- **What: Come help us spread the word about neuro club with fun games and cool prizes!!**
- **Point: 1 Outreach**
- **Sign Up: [link](#)**

EVP UPDATES:

Food Drive for Kids Count

- **When:** at GBM #6 on Tuesday, November 18th
- **Where:** LIT0109
- **What:** Help donate health snacks and meals for children within Alachua County at Kids Count. With the recent pause on SNAP benefits, families within Alachua County need our help now more than ever. Even if you already have all your outreach points, please still consider bringing in a food item at the next GBM
- **Point:** 1 outreach

FOOD DRIVE FOR KIDS COUNT

**AT GBM #6
NOVEMBER 18**

WHAT TO BRING IN?

CANNED GOODS
PEANUT BUTTER
DRIED FRUIT
APPLE SAUCE
RICE CAKES
GRANOLA BARS
FRUIT BARS
TRAIL MIX
GRANOLA
CRACKERS
CHIPS
POPCORN
PUDDING
JELLO

PMD UPDATES:

Peer Mentorship Program

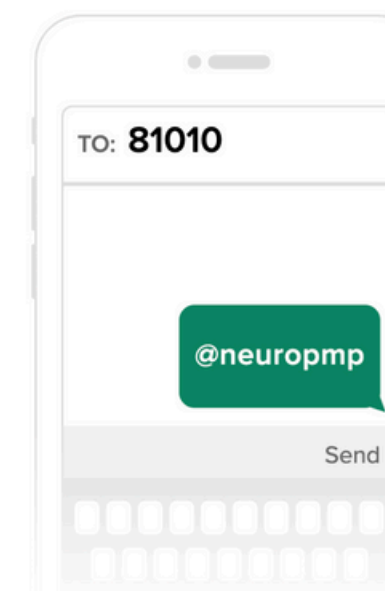
- Check in #2: Friday, November 21st
- 1 universal point per check in
- Check in [here](#) or use this QR code
- Please join the remind if you haven't already!



Tell people to text @neuropsych to the number 81010

They'll receive a welcome text from Remind.

If anyone has trouble with 81010, they can try texting @neuropsych to (415) 749-9891.



PMD UPDATES:

Peer Mentorship Program: Spring 2026

- **Fill out the interest form here or scan the QR code if you are interested in applying to be a mentor or mentee for spring 2026!**



PMD UPDATES:

Peer Resource Nights

- **When: November 4th (after GBM #5!) from 7:00PM-9:00PM**
- **Where: Marston Basement: L128 Organelle and L117 Chitin - Neuro/Psych/Bio Room and L130 Quasar - Chem Room**
 - **please check in in L128 Organelle!**
- **We will split the room into sections based on classes**
- **What: A night for you to lock in & receive resources. If you're taking CHM2045, CHM2046, BSC2010, BSC2011, PSB3340, STA2023, EXP3604, or PSY2123L, this event is for you! We have resources and want to help you succeed!**
- **Points: 1 Universal Point**
- **Sign Up: click here or scan the QR code →**



PMD UPDATES:

Class Registration Drop-In Office Hours

- **When:** Friday, November 7 from 5-7PM
- **Where:** On Zoom! Link [here](#) meeting ID: 469 622 0313
- **What:** I will be answering any questions regarding classes and class recs! Feel free to drop into the Zoom at any time and ask us questions one on one.
- **Points:** N/A
- **Sign Up:** click [here](#) or scan the QR code →



PMD UPDATES:

Neuro Talks: First Steps for Involvement

- **When: Friday, November 14, from 5-6PM**
- **Where: Matherly 16**
- **What: This event will explore different involvements at UF and how to go about pursuing them, finding your niche, and finding leadership!**
- **Points: 1 Universal Point**
- **Sign Up: click [here](#)**

TREASURER UPDATES:

Vintage Merch GBM Raffle!

- **When:** During GBM #6 on Nov. 18th
- **What:** 2 winners will receive vintage merch: choice between a t-shirt or a tote bag
- **How to Enter:** Venmo @ufneuroscienceclub \$3/Zelle 470-389-6380 and put “your name” and “raffle” as the memo! Deadline is Nov. 17th to enter!
 - Make sure to submit your receipts from today’s fundraiser for that extra entry!
- **Points:** 1 Fundraising Point



TREASURER UPDATES:

Tabling Trivia + Spin the Wheel Fundraiser!

- **When: During Tabling in Turlington on Nov. 12th 10am-1pm**
- **What: Stop by during tabling to test your luck and win a fun prize by spinning the wheel for \$1 (Venmo, Zelle, or Cash) OR by bringing an item for the canned food drive + get an extra surprise if you answer a neuro-themed question correctly after your spin!**
- **Points: 1 Fundraising point**

SECRETARY UPDATES:

Membership:

- **We do not have any dues or requirements to join our club, but we do offer active membership!**
- **Perks include: sheep brain dissection, discounts on merch, a tour of the MBI, end of semester banquet, and more!**

Universal points:

- **Points you can earn and count towards ANY point category**
- **Multiple opportunities throughout the semester!**

Point Requirements:

- **4 GBM**
- **2 Social**
- **2 Outreach**
- **2 Fundraising**

SECRETARY UPDATES:

Points Deadline

- **12/02 will be the last day to receive points in order to be an active member!**
- **Please contact me with any questions :)**

SECRETARY UPDATES:

GBM Excuse form:

- Please DM me on GroupMe and fill out [this excuse form](#) if you are unable to make our GBM times

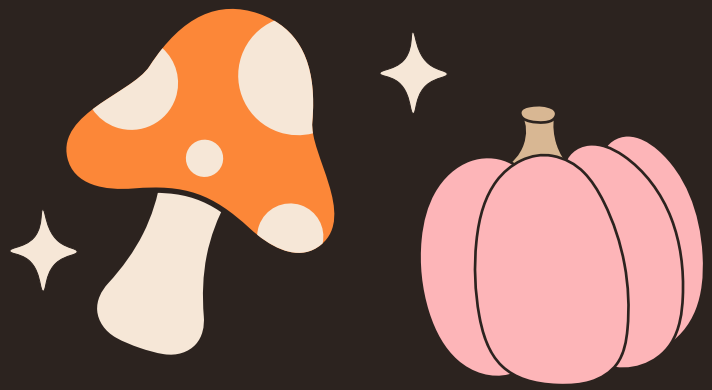
Resources:

- Check your points [here](#)
- UNIVERSAL POINT LINK: [here](#)
- Neuro [Google Cal](#)
- How to [link GCal to Apple Calendar](#)

SECRETARY UPDATES:

Bring A Buddy Point!

- **Bring a friend who is not a Neuro Club member yet to a GBM and earn 1 Universal Point!**
- **Submit a photo of you and the friend(s) you brought in the GBM sign in form to earn the point!**
- **There is no limit to the number of friends you can bring or how many GBMs you can bring a buddy to!**
- **Let me know if you have any questions!**



Calendar (11/03-11/07)



MON

TUES

WED

THURS

FRI

Rush Bowls Fundraiser

10:00am – 6:00pm

**1 Fundraising Point
(+1 Raffle entry &
opportunity for 1 Social
Point)!**

GBM #5

6pm

Little Hall 109

1 GBM Point

Peer Resource Night

7:00pm – 9:00pm

Marston Study Rooms

1 Universal Point

REUs 101

6:30pm – 7:30pm

Matherly 0115

1 Universal Point

**Mindfulness Sunset
Walk**

6:15pm-7:15pm

**From the Reitz to the
Bat Houses**

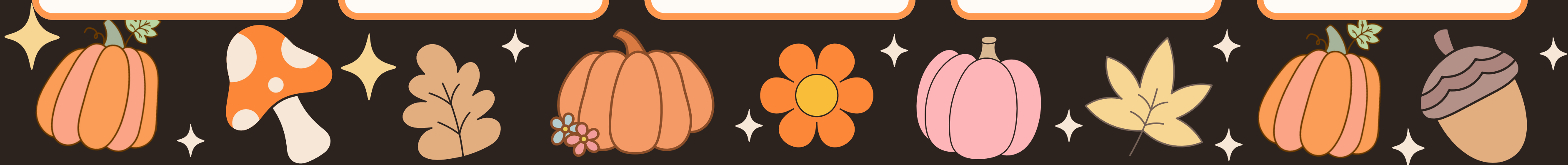
1 Social Point

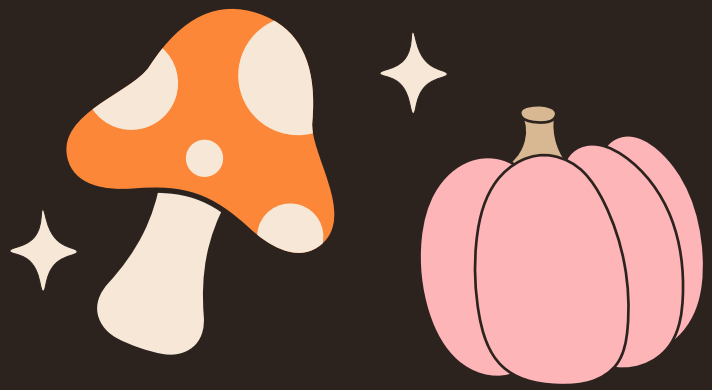
Class Registration

Office Hours

5PM-7PM

Zoom





Calendar (11/10-11/14)



MON

**Med x PhD
Student Panel
attendance
cancellation
deadline**

TUES

WED

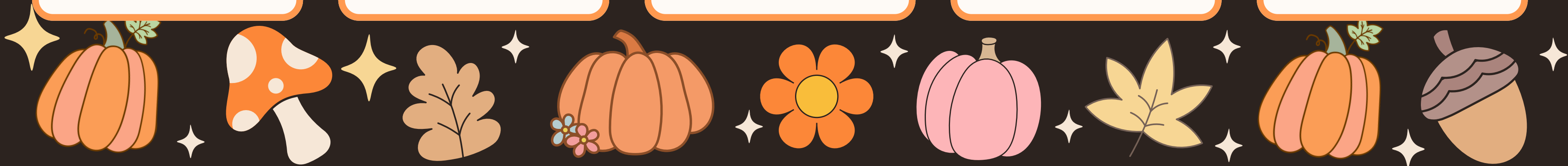
**Tabling
10:00am – 1:00pm
Turlington Plaza
(Table 6)
1 Outreach Point**

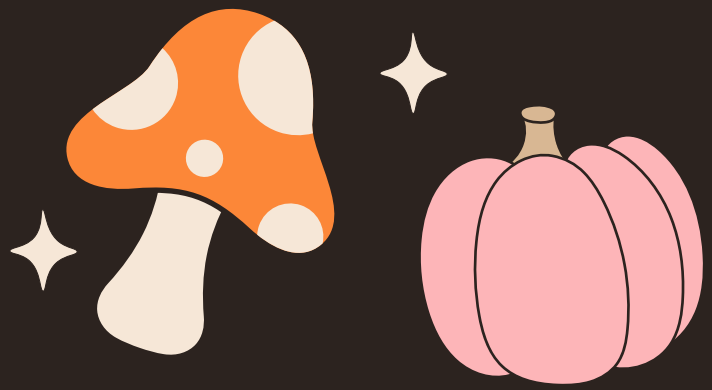
**Med x PhD Student
Panel
6-7pm
MBI LG-101A
1 Universal Point**

THURS

FRI

**Neuro Talks:
First Steps for
Involvement
5-6pm
Matherly 105
1 Universal Point**





Calendar (11/17-11/21)



MON

**PJ Night and Sleep
Cycles Talk
6:30 – 7:30pm
ROOM TBD
1 Social Point**

TUES

**GBM #6
6pm
Little Hall 109
1 GBM Point**

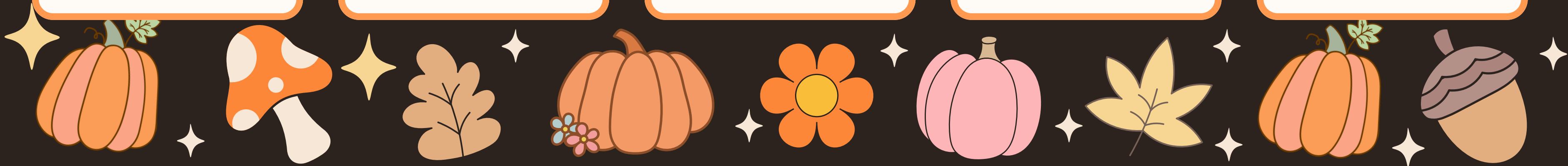
**Food Drive for
Kids Count
(during GBM)**

WED

THURS

FRI

**PMP Check In #2
by 11:59pm**

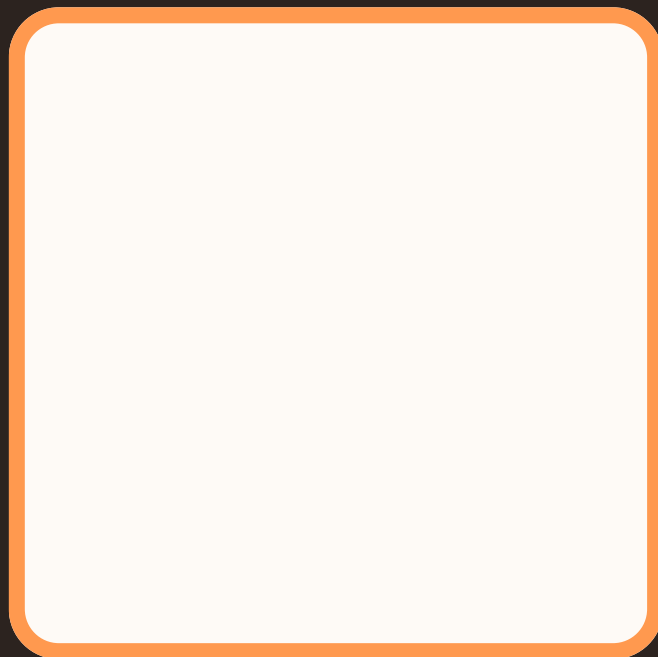


Our Speaker



**Doctoral student in the
ANCLAR lab**

GBM #5



SIGN IN



GroupMe



INSTAGRAM

