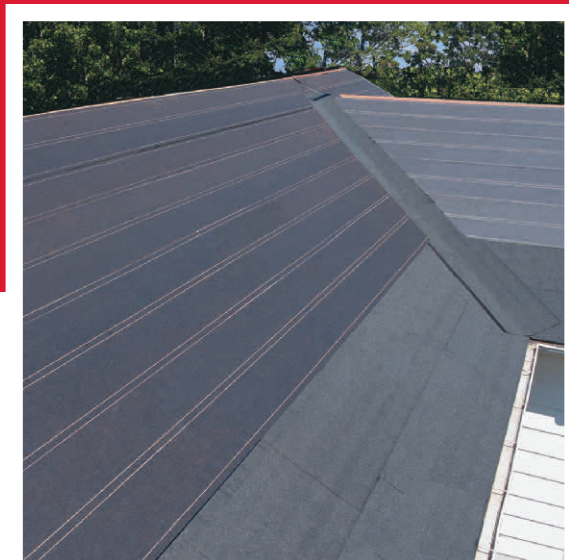


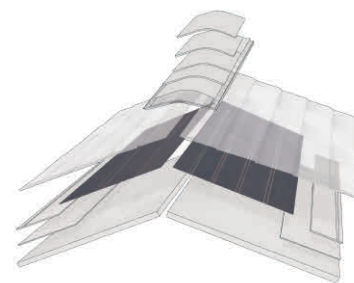
Shingle-Mate™ Roof Deck Protection

Help protect your home and roof system from damaging moisture with fiberglass-reinforced roof deck protection



- Provides a critical layer of extra protection between your shingles and roof deck to resist wind-driven rain that can cause damage to your roof system
- Avoids ugly “telegraphing” through your shingles that can detract from the look of your new roof
- Helps ensure your shingles lie flat and uniform

Shingle-Mate™ Roof Deck Protection



Benefits:

- **Fiberglass-reinforced** (unlike conventional asphalt felts) so it lies flatter for a better-looking finished roof
- **Reduces call-backs** caused by ugly telegraphing of wrinkles through the shingles
- **Lighter and easier to handle** than conventional #30 asphalt felt
- **Competitively priced** with conventional #30 asphalt felt on a per square basis (pricing varies by market)
- **Helps eliminate the need to slit bubbled felt** which may be required when using conventional asphalt felt (compromising the weather-resistance of your roofing system)
- **Can be applied** over plywood, wood plank, and all other approved roof decks¹
- **Eligible for up to a Lifetime[†] limited warranty** when used on Lifetime[†] Shingle roofs and an eligible accessory product in the Roof Deck Protection category of GAF residential enhanced warranties

Compare:

	Shingle-Mate™	#30 Asphalt Felt
Glass-reinforced to lie flatter	Yes	No
Reduces the telegraphing of wrinkles across the roof	Yes	No
Lightweight and easy to handle	Yes	No
Rolls swiftly in the cold, early morning	Yes	No
Four-square coverage for faster installation	Yes	No
Meets physical requirements of ASTM D226, Type II, ASTM D4869 and is UL Classified	Yes	Varies
Eligible component of the of GAF Lifetime [†] Roofing System and GAF residential enhanced warranties	Yes	No
Price-competitive*	Yes	Varies

*Shingle-Mate™ Roof Deck Protection is often competitively priced with #30 asphalt felts on a per square basis (prices vary by market)

Product Details:

Nominal Specifications:

For use with asphaltic shingles

- **Roll size:** 4 squares (432 sq. ft. [40.13 m²] — excludes laps)
- **Roll width:** 36" (0.914 m)
- **Roll length:** 144' (43.89 m)
- **Approx. roll weight:** 30 lb. (13.6 kg)

Code Approvals and Standards:

- Meets or exceeds the physical requirements of ASTM D226, Type II and ASTM D4869
- Miami-Dade County Product Control approved
- State of Florida approved
- Component of a UL Listed ANSI/UL 790 Class A system when used with UL Class A shingles²

[†]Lifetime refers to the length of warranty coverage provided and means as long as the original individual owner(s) of a single-family detached residence [or eligible second owner(s)] owns the property where the qualifying GAF products are installed. For other owners/structures, Lifetime coverage is not applicable. Lifetime coverage on shingles requires the use of GAF Lifetime Shingles only. See the *GAF Shingle & Accessory Limited Warranty* for complete coverage and restrictions. Visit gaf.com/LRS for qualifying GAF products. Lifetime coverage on shingles and accessories requires the use of any GAF Lifetime Shingle and at least 3 qualifying GAF Accessories. See the *GAF Roofing System Limited Warranty* for complete coverage and restrictions. For installations not eligible for the GAF Roofing System Limited Warranty, see the *GAF Shingle & Accessory Limited Warranty*. Visit gaf.com/LRS for qualifying GAF products.

¹Contact GAF Technical Support at 1-800-766-3411 for approved roof decks.

²Refer to UL Online Certification Directory for actual assemblies

Note: Shingle-Mate™ Roof Deck Protection must NOT be left exposed to moisture or precipitation.



To learn more about the Lifetime Roofing System visit gaf.com/Lifetime



We protect what matters most™

