



*** Competition Rollers™ ***

For Discerning Professionals

2018 Retail Price List

*** Roller Component Parts ***

*** Roller Rebuild Instructions ***

**Offering Superior & Unique Rollers to Upgrade
Golf & Turf Reel Mowers & Rotary Deck Mowers**

Including:

Toro, Jacobsen, John Deere, Ransomes, Hustler, Ventrac, Tru-Turf, National, Kesmac (as listed here)

Progressive Turf, Shibaura, Steiner, Brouwer, Baroness, Bunton & more (also available)

Offering upgrade smoothing rollers for Tru-Turf golf greens rolling machines - Great Pricing

GOLFCO INTERNATIONAL

Martin Doyle, President

martin@golfcointl.com

425-213-3721 cell

425-861-7755 office

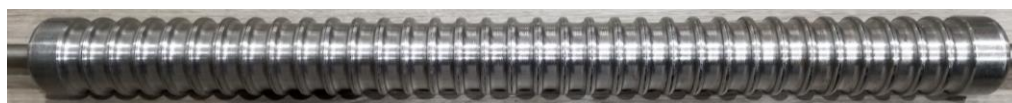
manufactured in Redmond, WA

GOLFCO INTERNATIONAL COMPETITION ROLLERS™ 2018

Yellow Polyurethane cast over Heavy Duty Steel Rollers™

	<p>2" dia. Grooved polyurethane & steel (.67" centers) Part # ends in 2CG4 US Patent #5394681</p>
	<p>2.5" dia. Grooved polyurethane & steel (1" centers) Part # ends in 25CG US Patent #5394681</p>
	<p>2.5" dia. 4 section Grooved polyurethane & steel (1" centers) Part # ends in 25CG US Patent #5394681</p>
	<p>3" dia. Grooved polyurethane & steel (1" centers) Part # ends in 3CG US Patent #5394681</p>
	<p>2" dia. Smooth polyurethane & steel Part # ends in 2C</p>
	<p>2" dia. 4 section Smooth polyurethane & steel Part # ends in 2C4</p>
	<p>2.5" dia. 4 section Smooth polyurethane & steel Part # ends in 25C4</p>
	<p>3" dia. Smooth polyurethane & steel Part # ends in 3C</p>
	<p>3.5" dia. Smooth polyurethane & steel Part # ends in 7C</p>
	<p>4" dia. Smooth polyurethane & steel Part # ends in 4C</p>
	<p>3" dia. Smooth polyurethane & steel with 2 bodies Part # ends in 3Ct</p>
	<p>5" dia. Smooth polyurethane & steel with 2 bodies Part # ends in 5Ct</p>
	<p>5" dia. Smooth polyurethane & steel Part # ends in 5C</p>

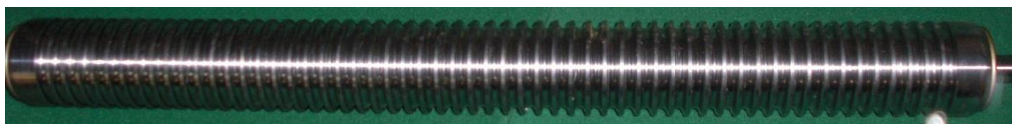
Heavy Duty Steel Competition Rollers™



2" dia. Competition Roller™
Grooved Steel Radius crest
machined 1/2" wall tubing



2 3/16" dia. STANDARD Roller™
Grooved aluminum
machined 1/2" wall tubing



2 3/16" dia. STANDARD Roller™
Grooved steel machined
1/2" wall tubing



2" dia. Smooth steel heavy duty
1/4" wall tubing Part #
ends in 2S



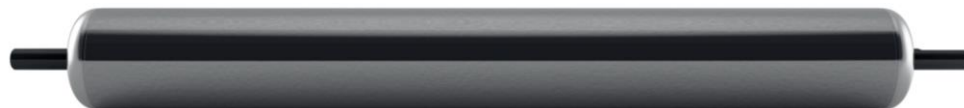
2" dia. 4 section Smooth steel
heavy duty 1/4" wall tubing
Part # ends in 2S4



2" dia. Smooth steel light tubing
with full shaft Part #
ends in 2L



2.5" dia. Smooth steel heavy duty
tubing Part
ends in 25S



3" dia. Smooth steel heavy duty
tubing Part
ends in 3S



4" dia. Smooth steel heavy duty
tubing Part
ends in 4S



2" dia. Competition Roller™
Cutaway body section

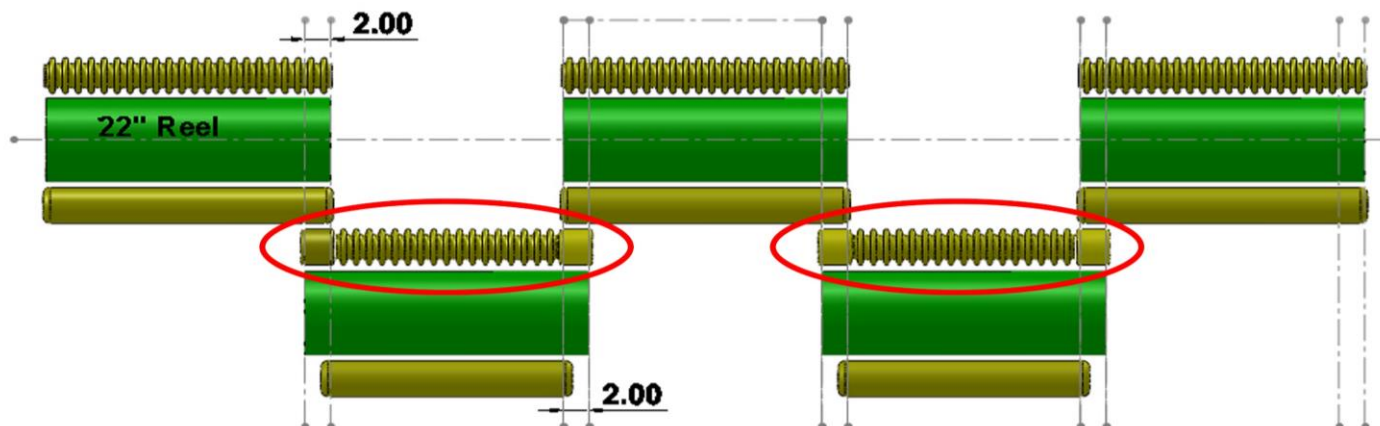


Competition Roller™
Overhaul Kit (with optional
grease fittings in yellow
seals) *Same kit for all
rollers*

GOLFCO INTERNATIONAL COMPETITION ROLLERS™ 2018

PROBLEM: REEL OVERLAP SHADOWING

SOLUTION: GOLFCO 3 SECTION MIXED SURFACE ROLLER



Multi-head mowers are designed with overlap positioning of the forward and rear reels causing double cutting of the turf that is typically visible as 2" - 2.5" wide shadowing pathways or lines.

GolfcO has developed an effective solution to this "double cut" shadowing as follows:

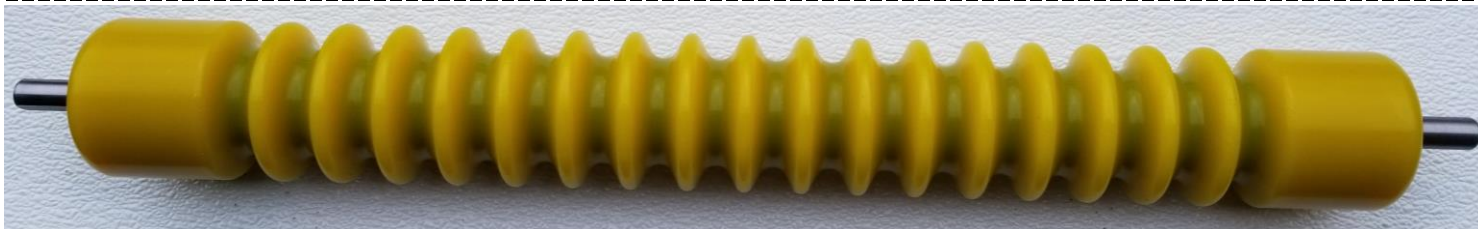
- * We created a special front roller assembly for the rear mower heads. This roller assembly has three independent rolling body sections as follows: a grooved roller body center section combined with short width smooth surface roller bodies on each end. The smooth roller bodies are aligned with the overlap of the forward and rear reels and function to lay down the grass just prior to the cut of the rear reel. This significantly diminishes the ability of the rear reel to cut the turf at the overlap position, thereby eliminating or greatly reducing the shadowing lines inherent in the "double cut".

The multi-section independent rolling bodies aid in preventing scuffing or sliding of the roller during turns. We have made this roller using our popular ultra tough polyurethane cast over a heavy duty steel roller base and our Competition Roller sealed bearing assembly for optimal life and utility.

We recommend use of our special multi-section front roller assembly in combination with our shortened rear roller. For optimal benefit, use Competition polyurethane rollers on the forward mower heads. These roller assemblies are available to fit any fairway mower in complete sets or as individual rollers.

This product was initially tested at PGA National Golf Resort, Florida (home of the Honda Classic), in conjunction with the professional care of John Patterson using John Deere 8700D fairway mowers.

These special roller combinations are available for all brands and models of fairway rollers.



GOLFCO INTERNATIONAL COMPETITION ROLLERS™ 2018

GolfcO makes rollers as significant upgrades to golf course reel and rotary deck mowers as follows:

Toro, Jacobsen, John Deere, Shibaura, Hustler, Ventrac (as listed here)

Ransomes, National, Bunton, Kesmac, Progressive Turf, Steiner, Brouwer, Baroness & more (call for details)

Also offering smoothing rollers for True-Turf golf greens rollers - Amazing Pricing Available.

We can make almost any roller including rollers for aeration equipment. Many other diameters and models available

ROLLER LINES and OPTIONS:

Competition Rollers™ (Full length shafts and sealed bearings)

***ORIGINAL* - Roller of choice for discerning professionals**

- * GolfcO has been making heavy duty, precision rollers exclusively for the golf & turf industry for 22 years. Our Competition Rollers™ were designed to accommodate almost any option of diameter, length and body style for any reel type and rotary deck mower used by golf courses and other discerning turf care professionals.
 - * All of our Competition Rollers™ are made of heavy duty, precision steel tubing. We also produce polyurethane rollers. Polyurethane cast and bonded to steel provides exceptional high performance benefits unmatched by other materials. Polyurethane is a highly engineered elastomer similar to rubber but with far superior physical characteristics. Our cast polyurethane Competition Rollers™ provide exceptional wearability with abrasion resistance, toughness and shock absorbency unmatched by other material choices. Your mowers will also benefit from the cushioning effect of polyurethane in rough, abusive environments.
 - * Polyurethane is exceptional at resisting debris buildup. It has no surface micro-pores (unlike metals). It resists absorption and adsorption of liquids and solids. Further, by resisting adherence of contaminants, our polyurethane rollers reduce the likelihood of contributing to transportation or transmigration of harmful microorganisms and diseases.
 - * Polyurethane is resistant to extremes in temperature. It will not get hot to the touch in sunny applications like metal and therefore will not sear or stress your turf. Also, it reflects cold and is resistant to frost.
 - * Competition Rollers™ incorporate a unique bearing, seal and shaft design that can be used in any application. All Competition Rollers™ utilize full length shafts and a bearing retainer system that is precise and reliable.
 - * No regreasing required - the sealed single row ball bearings allow for ease of maintenance. The bearings are filled with a superior quality "EP" (extreme pressure) grease. We have added proprietary, unique additional seals for enhanced protection against the elements and for retaining grease within the housing to prevent leakage. A sealed bearing configuration that actually holds up to the toughest applications.
 - * Each roller is rebuildable quickly and affordably - the proven success of GolfcO's sealed bearing design is taken to the next level.
 - * Stainless steel bearings are available as an upgrade upon request.
 - * An optional flush-mount grease fitting can be added that is fully protected against breakage within our proprietary exterior seal. This unique option allows for regreasing of the bearings at discretionary, customized intervals. Since the bearings remain sealed, you can regrease as often or little as you desire.
 - * Our patented grooved rollers have soft large radius corners to protect the turf and provide steerability. No solid debris will ever lodge between the grooves of our polyurethane rollers. (US Patent 5394681)
- *** New sectional rollers with multiple independent roller bodies on a single shaft now available. An advantage for tight turn conditions or to avoid skid marks on cleanup pass with greens mowers.**

Competition2 Rollers™ (with full length shafts and larger double row bearings)

***NEW OPTION* - If you have the toughest application on the planet**

GolfcO offers a significant enhancement to our proven line of Competition Rollers™.

Competition2 Rollers™ are upgraded to stainless steel double row sealed ball bearings.

- these heavy duty bearings have significantly higher load bearing capacity
 - double row bearing sets have more than twice the lateral thrust capacity of tapered roller bearings
 - these bearings have up to 2X the mass of the ones that we used successfully for over 20 years
 - double row ball bearings require no adjustments or preloading - no nuts or threaded shafts
- (Please call to inquire about these Competition2 Rollers™ available for many applications)
(Competition2 Rollers™ have a "2" in front of the part #)

Pro Roller™ line (Enhanced GolfcO designs with water pump style bearings)

Precision machined rollers with simple replaceable water pump style bearings (with integral shafts). Most Pro rollers are machined grooved or smooth from one piece solid steel or aluminum bar. All light steel tubing roller bodies and bearing hubs are TIG welded full circumference to last longer.

Standard Roller™ line (Comparable to OEM style)

GolfcO offers certain roller options that are visually similar to OEM style rollers. These rollers are produced and assembled to high precision standards. They are priced at or below any other manufacturers' comparable roller part.

ALL GOLFCO ROLLERS ARE MADE IN THE USA BY OUR OWN SKILLED MACHINISTS & TECHNICIANS

GOLFCO INTERNATIONAL COMPETITION ROLLERS™ 2018 SUMMARY OF SPECIAL FEATURES

Common overhaul kit for all rollers (bearings, seals and retainers are the same).

Sealed ball bearings that last without the need for re-greasing.

Stainless bearings available for special situations.

Can add special flush mount grease fitting (if you want to re-grease the bearings).

Made with heavy duty, thick wall precision steel tubing.

Full length shafts (increases integrity of the roller with less stress on body and bearings).

Polyurethane body material with features as follows:

Is a high performance elastomer.

Is precision cast (not a thin layer spray-on) over a heavy duty steel roller body.

Is extremely abrasion resistant (very tough).

Will far outlast any metallic material in abrasive conditions.

Will not damage concrete or asphalt paths or curbs from contact.

Is silent running on all surfaces.

Is very shock absorbing and impact resistant.

Diminishes effects of impact and shudder to the mower-reducing wear on joints & components.

Will help diminish wear on mower operators.

Has memory rebound and returns to its original shape.

Is a "live" material and shakes debris from the surface in dynamic rolling.

Has no micro-pore structure (liquids have no place to cling-resists adsorption).

Resists debris buildup (superior to any metallic materials).

Diminishes transmigration of harmful elements such as disease or fungus.

Absorption of heat or cold is minimal.

Does not transmit heat or cold.

Will not stress your turf in hot or cold conditions.

Will not develop frost buildup.

Grooved design features no parallel sides within the groove channels.

Prevents hard debris from lodging in the grooves.

Is non-aggressive and kinder on turf and provides more consistent, finer cutting

Grooved design has large soft radius groove crests and corners for gentle turf contact.

Minimizes surface area contact and rides closer to soil.

Ensures less floating and less compaction of the turf.

Ensures more consistent cut appearance.

Provides for less stress and easier steering of the mower.

Will cut more grass on initial pass saving time.

COMPETITION ROLLERS™ 2018

US PATENT #5394681

Jacobsen ALL 22" GREENSKING, GM, E-Plex, G-Plex & ECLIPSE 122 & 322 MOWERS - FRONT

4 bodies	4 section 2" smooth Urethane cast over steel tubing	8.5 lb J2522A2C4	\$ 349	4 independent roller bodies on a shaft	
4 bodies	4 section 2" smooth Steel extra heavy duty tubing	12 lb J2522A2S4	\$ 299	4 independent roller bodies on a shaft	
4 bodies	4 section 2" smooth Steel light tubing (full shaft)	7 lb J2522A2L4	\$ 299	4 independent roller bodies on a shaft	
4 bodies	4 section 2.5" grooved Urethane cast over steel tubing	10.5 lb J2522A25CG4	\$ 399	4 independent roller bodies on a shaft	68673 (2.25" dia)
4 bodies	4 section 2.5" smooth Urethane cast over steel tubing	8.5 lb J2522A25C4	\$ 349	4 independent roller bodies on a shaft	
4 bodies	4 section 2.5" smooth Steel extra heavy duty tubing	12 lb J2522A25S4	\$ 349	4 independent roller bodies on a shaft	
	2" grooved Urethane cast over heavy duty steel tubing	7.5 lb J2522A2CG	\$ 219	22.5" body & 25.87" shaft	68527
	2" grooved Steel heavy duty tubing with radius crests	8 lb J2522A2SG	\$ 229	22.5" body & 25.87" shaft	68527
	2" smooth Urethane cast over heavy duty steel tubing	8 lb J2522A2C	\$ 199	22.25" body & 25.87" shaft	68641
	2" smooth Steel extra heavy duty tubing (1/4" wall)	11.5 lb J2522A2S	\$ 159	22.25" body & 25.87" shaft	68641
	2" smooth Steel light tubing (full shaft)	5.5 lb J2522A2L	\$ 119	22.25" body & 25.87" shaft	1004991, 68530
	2.18" grooved (narrow 3/8" centers) machined Steel tubing	14 lb J2522A21SG38	\$ 239	22 7/8" body width	
	2.18" grooved (narrow 3/8" centers) machined Aluminum tubing	12 lb J2522A21AG38	\$ 239	22 7/8" body width	
	2.5" grooved Urethane cast over heavy duty steel tubing	9 lb J2522A25CG	\$ 259	22.25" body & 25.87" shaft	
	2.5" smooth Urethane cast over heavy duty steel tubing	9.5 lb J2522A25C	\$ 229	22.45" body & 25.87" shaft	
	2.5" smooth Steel heavy duty tubing (1/8" wall)	10 lb J2522A25S	\$ 189	22.25" body & 25.87" shaft	
	2" smooth Urethane cast over heavy duty steel **PRO line	11 lb 223C	\$ 229	water pump bearing BWP3	
	2" smooth Steel machined heavy bar **PRO line	19 lb 223SB	\$ 199	water pump bearing BWP3	68641
	2" smooth Steel light tubing **PRO line	4 lb 223SL	\$ 119	water pump bearing BWP3	68641
	2.18" grooved Steel machined tubing **Standard line	14 lb G68613	\$ 239	tapered roller bearing 22 7/8" body width	68613
	2.18" grooved Aluminum machined tubing **Standard line	12 lb G68614	\$ 239	tapered roller bearing 22 7/8" body width	68614
	2" smooth Steel light tubing **Standard line	4 lb G1004991	\$ 119	ball bearing 303558	1004991

Jacobsen ALL 22" GREENSKING, GM, E-Plex, G-Plex & ECLIPSE 122 & 322 MOWERS - REAR

4 bodies	4 section 2" smooth Urethane cast over steel tubing	8.5 lb J2422S2C4	\$ 349	3/8"-24 taps in shaft ends	
4 bodies	4 section 2" smooth Steel extra heavy duty tubing	12 lb J2422S2S4	\$ 299	3/8"-24 taps in shaft ends	
4 bodies	4 section 2" smooth Steel light tubing (full shaft)	7 lb J2422S2L4	\$ 299	3/8"-24 taps in shaft ends	
4 bodies	4 section 2" smooth Urethane cast over steel tubing	8.5 lb J2422G2C4	\$ 349	7/16"-20 taps in shaft ends	
4 bodies	4 section 2" smooth Steel extra heavy duty tubing	12 lb J2422G2S4	\$ 299	7/16"-20 taps in shaft ends	
4 bodies	4 section 2" smooth Steel light tubing (full shaft)	7 lb J2422G2L4	\$ 299	7/16"-20 taps in shaft ends	
	2" grooved Urethane cast over heavy duty steel tubing	7.5 lb J2422S2CG	\$ 219	3/8"-24 taps in shaft ends	
	2" grooved Steel heavy duty tubing with radius crests	8 lb J2422S2SG	\$ 229	3/8"-24 taps in shaft ends	
	2" smooth Urethane cast over heavy duty steel tubing	8 lb J2422S2C	\$ 199	3/8"-24 taps in shaft ends	
	2" smooth Steel extra heavy duty tubing (1/4" wall)	11.5 lb J2422S2S	\$ 159	3/8"-24 taps in shaft ends	1000770
	2" smooth Steel light tubing (full shaft)	5.5 lb J2422S2L	\$ 119	3/8"-24 taps in shaft ends	1004990
	2" grooved Urethane cast over heavy duty steel tubing	7.5 lb J2422G2CG	\$ 219	7/16"-20 taps in shaft ends	
	2" grooved Urethane cast over heavy duty steel tubing	7.5 lb J2422G2CG	\$ 219	7/16"-20 taps in shaft ends	
	2" smooth Urethane cast over heavy duty steel tubing	8 lb J2422G2C	\$ 199	7/16"-20 taps in shaft ends	
	2" smooth Steel extra heavy duty tubing (1/4" wall)	11.5 lb J2422G2S	\$ 159	7/16"-20 taps in shaft ends	
	2" smooth Steel light tubing (full shaft)	5.5 lb J2422G2L	\$ 119	7/16"-20 taps in shaft ends	
	2" smooth Urethane cast over heavy duty steel **PRO line	12 lb 225C	\$ 229	7/16"-20 taps in shaft ends & BWP5 bearings	
	2" smooth Steel machined heavy bar **PRO line	19 lb 225SB	\$ 199	7/16"-20 taps in shaft ends & BWP5 bearings	
	2" smooth Steel light tubing **PRO line	4 lb 225SL	\$ 119	7/16"-20 taps in shaft ends & BWP5 bearings	
	2" smooth Steel light tubing **Standard line	4 lb G1004990	\$ 119	3/8"-24 taps in shaft ends	1004990
	2" smooth Steel tubing (1/8" wall) **Standard line	14 lb G1000770	\$ 179	3/8"-24 taps in shaft ends	1000770 (254-67/68)

Jacobsen TC-22 GREENSMOWERS - FRONT

4 bodies	4 section 2" smooth Urethane cast over steel tubing	8.5 lb J2522J2C4	\$ 399	4 independent roller bodies on a shaft	
4 bodies	4 section 2" smooth Steel extra heavy duty tubing	12 lb J2522J2S4	\$ 349	4 independent roller bodies on a shaft	
4 bodies	4 section 2" smooth Steel light tubing (full shaft)	7 lb J2522J2L4	\$ 349	4 independent roller bodies on a shaft	
	2" grooved Urethane cast over heavy duty steel tubing	7.5 lb J2522J2CG	\$ 249		
	2" grooved Steel heavy duty tubing with radius crests	8 lb J2522J2SG	\$ 229	22.5" body & 25.87" shaft	
	2" smooth Urethane cast over heavy duty steel tubing	8 lb J2522J2C	\$ 229		
	2" smooth Steel extra heavy duty tubing (1/4" wall)	11.5 lb J2522J2S	\$ 199		
	2" smooth Steel light tubing (full shaft)	5.5 lb J2522J2L	\$ 179		

Jacobsen TC-22 GREENSMOWERS - REAR

	2" smooth Urethane cast over heavy duty steel tubing	8 lb J2522V2C	\$ 229		
	2" smooth Steel extra heavy duty tubing (1/4" wall)	11.5 lb J2522V2S	\$ 199		
	2" smooth Steel light tubing (full shaft)	5.5 lb J2522V2L	\$ 179		

Jacobsen ALL 18" GREENSMOWERS (Eclipse 118, GK 418 & GK 518) - FRONT & REAR

4 bodies	4 section 2" smooth Urethane cast over steel tubing	8.5 lb J2119A2C4	\$ 349	4 independent roller bodies on a shaft	
4 bodies	4 section 2" smooth Steel extra heavy duty tubing	12 lb J2119A2S4	\$ 299	4 independent roller bodies on a shaft	
4 bodies	4 section 2" smooth Steel light tubing (full shaft)	7 lb J2119A2L4	\$ 299	4 independent roller bodies on a shaft	
	2" grooved Urethane cast over heavy duty steel tubing	6.5 lb J2119A2CG	\$ 219		68616, 63318
	2" smooth Urethane cast over heavy duty steel tubing	7.5 lb J2119A2C	\$ 199		68626, 4108920, 4175221
	2" smooth Steel extra heavy duty tubing (1/4" wall)	10.5 lb J2119A2S	\$ 159		68626, 4108920, 4175221
	2" smooth Steel light tubing (full shaft)	4.5 lb J2119A2L	\$ 139		4108920, 4175221

Jacobsen ALL 26" GREENSMOWERS (Eclipse 126, GK 426 & GK 526) - FRONT & REAR

4 bodies	4 section 2.5" grooved Urethane cast over steel tubing	10 lb J2926A25CG4	\$ 399	4 independent roller bodies on a shaft	
4 bodies	4 section 2.5" smooth Urethane cast over steel tubing	13 lb J2926A25C4	\$ 349	4 independent roller bodies on a shaft	
4 bodies	4 section 2.5" smooth Steel extra heavy duty tubing	13 lb J2926A25S4	\$ 349	4 independent roller bodies on a shaft	
	2" smooth Urethane cast over heavy duty steel tubing	9 lb J2926A2C	\$ 239		68627
	2" smooth Steel extra heavy duty tubing (1/4" wall)	12.5 lb J2926A2S	\$ 199		68627
	2" smooth Steel light tubing (full shaft)	7 lb J2926A2L	\$ 189		68627
	2.5" grooved Urethane cast over heavy duty steel tubing	9 lb J2926A25CG	\$ 259		68617, 68628
	2.5" smooth Urethane cast over heavy duty steel tubing	11 lb J2926A25C	\$ 239		
	2.5" smooth Steel heavy duty tubing (1/8" wall)	11 lb J2926A25S	\$ 199		68627

Jacobsen 18" LIGHT FAIRWAY SLF1880 - FRONT			(Sectional rollers with 4 bodies also available)	
3" grooved Urethane cast over heavy duty steel tubing	9 lb J2119L3CG	\$ 299		67925
3" smooth Urethane cast over heavy duty steel tubing	10.5 lb J2119L3C	\$ 259		
3" smooth Steel heavy duty tubing (1/8" wall)	11 lb J2119L3S	\$ 209		
To diminish instances of shadowing lines due to overlap of reels			call for proper application specifics	
3 section 3" grooved Urethane with 2" wide smooth ends	8.5 lb J2114L3CG26C	\$ 499		front roller for rear mower heads-use with J2016G2C
2" smooth Urethane cast over heavy duty steel tubing	6.5 lb J2016G2C	\$ 249		rear roller for rear mower heads-use with J2114L3CG26C
(please confirm diameter of body and length of shaft required)				
Jacobsen 18" LIGHT FAIRWAY SLF1880 - REAR (with 7/16-20 tap)				
2" smooth Urethane cast over heavy duty steel tubing	6.5 lb J2016G2C	\$ 249	16.45" body & 7/16"-20 taps in shaft ends	68674, 4115860 (2.375"x15.5")
2" smooth Steel extra heavy duty tubing (1/4" wall)	8.5 lb J2016G2S	\$ 189	16.25" body & 7/16"-20 taps in shaft ends	68674, 4115860 (2.375"x15.5")
2" smooth Steel light tubing (full shaft)	4.5 lb J2016G2L	\$ 159	16.25" body & 7/16"-20 taps in shaft ends	68674, 4115860 (2.375"x15.5")
2" smooth Urethane cast over heavy duty steel tubing	11 lb J2019S2C	\$ 229	19.25" body & 3/8"-24 taps in shaft ends	4135083
2" smooth Steel heavy duty tubing (1/8" wall)	11 lb J2019S2S	\$ 199	19.25" body & 3/8"-24 taps in shaft ends	4135083
2.5" smooth Urethane cast over heavy duty steel tubing	11 lb J2019S25C	\$ 249	19.45" body & 3/8"-24 taps in shaft ends	4135083
2.5" smooth Steel heavy duty tubing (1/8" wall)	11 lb J2019S25S	\$ 229	19.25" body & 3/8"-24 taps in shaft ends	4135083
Jacobsen LF2500 & 3050 26" LIGHT FAIRWAY - FRONT & REAR			(Sectional rollers with 4 bodies also available)	
3" grooved Urethane cast over heavy duty steel tubing	13 lb J3026X3CG	\$ 299	1/2" dia. shaft ends	
3" smooth Urethane cast over heavy duty steel tubing	13.5 lb J3026X3C	\$ 259	1/2" dia. shaft ends	
3" smooth Steel heavy duty tubing (1/8" wall)	13.5 lb J3026X3S	\$ 209	1/2" dia. shaft ends	
Jacobsen 22" LIGHT FAIRWAY- FRONT (ALL LF MODELS EXCEPT 26" 2500, 3050 & 3810)			(Sectional rollers with 4 bodies also available)	
3" grooved Urethane cast over heavy duty steel tubing	9.5 lb J2522A3CG	\$ 299		123268
3" smooth Urethane cast over heavy duty steel tubing	12 lb J2522A3C	\$ 259		
3" smooth Steel heavy duty tubing (1/8" wall)	11.5 lb J2522A3S	\$ 209		
To diminish instances of shadowing lines due to overlap of reels			call for proper application specifics	
3 section 3" grooved Urethane with 2" wide smooth ends	9.5 lb J2517A3CG26C	\$ 499		front roller for rear mower heads-use with J2419S2C
2" smooth Urethane cast over heavy duty steel tubing	7 lb J2419S2C	\$ 249		rear roller for rear mower heads-use with J2517A3CG26C
(please confirm diameter of body and length of shaft required)				
Jacobsen 22" LIGHT FAIRWAY- REAR (ALL LF MODELS EXCEPT 26" 2500, 3050 & 3810)			(Sectional rollers with 4 bodies also available)	
4 bodies 4 section 2" smooth Urethane cast over steel tubing	8.5 lb J2422S2C4	\$ 349	22.25" body & 3/8"-24 taps in shaft ends	
4 bodies 4 section 2" smooth Steel extra heavy duty tubing	12 lb J2422S2S4	\$ 299	22.25" body & 3/8"-24 taps in shaft ends	
4 bodies 4 section 2" smooth Steel light tubing (full shaft)	7 lb J2422S2L4	\$ 299	22.25" body & 3/8"-24 taps in shaft ends	
4 bodies 4 section 2" smooth Urethane cast over steel tubing	8.5 lb J2422G2C4	\$ 349	22.25" body & 7/16"-20 taps in shaft ends	
4 bodies 4 section 2" smooth Steel extra heavy duty tubing	12 lb J2422G2S4	\$ 299	22.25" body & 7/16"-20 taps in shaft ends	
4 bodies 4 section 2" smooth Steel light tubing (full shaft)	7 lb J2422G2L4	\$ 299	22.25" body & 7/16"-20 taps in shaft ends	
2" grooved Urethane cast over heavy duty steel tubing	7.5 lb J2422S2CG	\$ 219	22.5" body & 3/8"-24 taps in shaft ends	
2" grooved Steel heavy duty tubing with radius crests	8 lb J2422S2SG	\$ 229	3/8"-24 taps in shaft ends	
2" smooth Urethane cast over heavy duty steel tubing	8 lb J2422S2C	\$ 199	22.25" body & 3/8"-24 taps in shaft ends	
2" smooth Steel extra heavy duty tubing (1/4" wall)	11.5 lb J2422S2S	\$ 159	22.25" body & 3/8"-24 taps in shaft ends	1000770
2" smooth Steel light tubing (full shaft)	5.5 lb J2422S2L	\$ 119	22.25" body & 3/8"-24 taps in shaft ends	1004990
2.5" grooved Urethane cast over heavy duty steel tubing	9 lb J2421S25CG	\$ 259	21.25" body & 3/8"-24 taps in shaft ends	
2.5" smooth Urethane cast over heavy duty steel tubing	9.5 lb J2421S25C	\$ 229	21.45" body & 3/8"-24 taps in shaft ends	5003687, 1003728, 1002446, 100105
2.5" smooth Steel extra heavy duty tubing (1/4" wall)	10 lb J2421S25S	\$ 189	21.25" body & 3/8"-24 taps in shaft ends	5003687, 1003728, 1002446, 100105
2" grooved Urethane cast over heavy duty steel tubing	7.5 lb J2422G2CG	\$ 219	22.5" body & 7/16"-20 taps in shaft ends	
2" grooved Urethane cast over heavy duty steel tubing	7.5 lb J2422G2CG	\$ 219	7/16"-20 taps in shaft ends	
2" smooth Urethane cast over heavy duty steel tubing	8 lb J2422G2C	\$ 199	22.25" body & 7/16"-20 taps in shaft ends	
2" smooth Steel extra heavy duty tubing (1/4" wall)	11.5 lb J2422G2S	\$ 159	22.25" body & 7/16"-20 taps in shaft ends	1000770
2" smooth Steel light tubing (full shaft)	5.5 lb J2422G2L	\$ 119	22.25" body & 7/16"-20 taps in shaft ends	1004990
2.5" grooved Urethane cast over heavy duty steel tubing	9 lb J2421G25CG	\$ 259	21.25" body & 7/16"-20 taps in shaft ends	
2.5" smooth Urethane cast over heavy duty steel tubing	9.5 lb J2421G25C	\$ 229	21.45" body & 7/16"-20 taps in shaft ends	5003687, 1003728, 1002446, 100105
2.5" smooth Steel extra heavy duty tubing (1/4" wall)	10 lb J2421G25S	\$ 189	21.25" body & 7/16"-20 taps in shaft ends	5003687, 1003728, 1002446, 100105
2" smooth Urethane cast over heavy duty steel tubing	7 lb J2419S2C	\$ 249	19.25" body & 3/8"-24 taps in shaft ends	
2" smooth Steel extra heavy duty tubing (1/4" wall)	10.5 lb J2419S2S	\$ 189	19.25" body & 3/8"-24 taps in shaft ends	
2" smooth Urethane cast over heavy duty steel **PRO line	11 lb 225C	\$ 229	7/16"-20 taps in shaft ends & BWP5 bearings	
2" smooth Steel machined heavy bar **PRO line	19 lb 225SB	\$ 199	7/16"-20 taps in shaft ends & BWP5 bearings	68597
2" smooth Steel light tubing **PRO line	4 lb 225SL	\$ 119	7/16"-20 taps in shaft ends & BWP5 bearings	1004990
2" smooth Steel light tubing **Standard line	4 lb G1004990	\$ 119	3/8"-24 taps in shaft ends	1004990
2" smooth Steel tubing (1/8" wall) **Standard line	14 lb G1000770	\$ 179	3/8"-24 taps in shaft ends	1000770 (254-67/68)
Jacobsen 26" LF3810 & TRIKING 1471 & 1671 & TR-3 - FRONT & REAR			(Sectional rollers with 4 bodies also available)	
2.5" grooved Urethane cast over heavy duty steel tubing	9.5 lb J2826A25CG	\$ 259		
2.5" smooth Urethane cast over heavy duty steel tubing	11 lb J2826A25C	\$ 229		132639
2.5" smooth Steel heavy duty tubing (1/8" wall)	11 lb J2826A25S	\$ 189		132639
3" grooved Urethane cast over heavy duty steel tubing	13 lb J2826A3CG	\$ 299		68617/28, 123266, JMAB422
3" smooth Urethane cast over heavy duty steel tubing	13.5 lb J2826A3C	\$ 259		68627
3" smooth Steel heavy duty tubing (1/8" wall)	13.5 lb J2826A3S	\$ 209		68627
Jacobsen 30" TRIKING 1684D & 1900D- FRONT & REAR				
2.5" grooved Urethane cast over heavy duty steel tubing	9 lb J3229A25CG	\$ 259		
2.5" smooth Urethane cast over heavy duty steel tubing	12 lb J3229A25C	\$ 229		132640
2.5" smooth Steel heavy duty tubing (1/8" wall)	12 lb J3229A25S	\$ 189		132640
3" grooved Urethane cast over heavy duty steel tubing	13.5 lb J3229A3CG	\$ 299		67729 (set of 3)
3" smooth Urethane cast over heavy duty steel tubing	15 lb J3229A3C	\$ 259		
3" smooth Steel heavy duty tubing (1/8" wall)	15 lb J3229A3S	\$ 209		
Jacobsen 30" ST5111, FAIRWAY, GANG, HF5 & HF15 - FRONT & REAR				
3" grooved Urethane cast over heavy duty steel tubing	13.5 lb J3329A3CG	\$ 299		
3" smooth Urethane cast over heavy duty steel tubing	15 lb J3329A3C	\$ 259		132506, 113897, 700500
3" smooth Steel heavy duty tubing (1/8" wall)	15 lb J3329A3S	\$ 209		132506, 113897, 700500

Jacobsen ROTARY AR-522 & AR-722 26" DECK - FRONT

5" grooved Urethane over steel tubing (4" wide body)	10 lb J0404G5CG2	\$ 219	2 large machined grooves in roller body
5" smooth Urethane over steel tubing (4" wide body)	11 lb J0404G5C	\$ 149	

Jacobsen ROTARY AR-522, AR-722, & AR-5 26" DECK - REAR (must confirm shaft configuration on ends)

3" grooved Urethane over steel tubing (two 4" wide bodies)	5.8 lb J2904R3CGt	\$ 399	both shaft ends have large flat and pin hole	non-stripping, improved air flow
3" smooth Urethane over steel tubing (two 4" wide bodies)	6.2 lb J2904R3Ct	\$ 379	both shaft ends have large flat and pin hole	non-stripping, improved air flow
3" smooth Steel heavy duty tubing (two 4" wide bodies)	8 lb J2904R3St	\$ 359	both shaft ends have large flat and pin hole	non-stripping, improved air flow
3" grooved Urethane cast over heavy duty steel tubing	13 lb J2926R3CG	\$ 399	both shaft ends have large flat and pin hole	non-stripping, improved air flow
3" smooth Urethane cast over heavy duty steel tubing	13.7 lb J2926R3C	\$ 299	both shaft ends have large flat and pin hole	3"roller 4163121, shaft4124015
3" smooth Steel heavy duty tubing (1/8" wall)	14 lb J2926R3S	\$ 279	both shaft ends have large flat and pin hole	3"roller 4163121, shaft4124015
3.5" smooth Urethane cast over heavy duty steel tubing	18 lb J2926R7C	\$ 359	both shaft ends have large flat and pin hole	3"roller 4163121, shaft4124015
4" smooth Urethane cast over heavy duty steel tubing	29 lb J2926R4C	\$ 399	both shaft ends have large flat and pin hole	4"roller 4123031, 4151882
4" smooth Steel heavy duty tubing (1/8" wall)	27 lb J2926R4S	\$ 359	both shaft ends have large flat and pin hole	4"roller 4123031, 4151882
3" smooth Urethane cast over heavy duty steel tubing	13.7 lb J2926Q3C	\$ 299	shaft-1 end with large flat & 1 round end	model 068131 roller4284471,shaft42
3" smooth Steel heavy duty tubing (1/8" wall)	14 lb J2926Q3S	\$ 279	shaft-1 end with large flat & 1 round end	model 068131 roller4284471,shaft42

Jacobsen ROTARY AR-5 26" DECK - REAR (must confirm shaft configuration on ends)

3" smooth Urethane over steel tubing (two 4" wide bodies)	6.3 lb J3004D3Ct	\$ 379	specify configuration of shaft ends	non-stripping, improved air flow
3" smooth Steel heavy duty tubing (two 4" wide bodies)	8 lb J3004D3St	\$ 359	specify configuration of shaft ends	non-stripping, improved air flow
3" grooved Urethane cast over heavy duty steel tubing	13 lb J3026D3CG	\$ 359	specify configuration of shaft ends	non-stripping, improved air flow
3" smooth Urethane cast over heavy duty steel tubing	13.8 lb J3026D3C	\$ 299	specify configuration of shaft ends	
3" smooth Steel heavy duty tubing (1/8" wall)	14 lb J3026D3S	\$ 279	specify configuration of shaft ends	
3.5" smooth Urethane cast over heavy duty steel tubing	17 lb J3026D7C	\$ 359	specify configuration of shaft ends	
4" smooth Urethane cast over heavy duty steel tubing	29 lb J2926R4C	\$ 399	both shaft ends have large flat and pin hole	model 068080 4"roller4123031, 219E
4" smooth Steel heavy duty tubing (1/8" wall)	27 lb J2926R4S	\$ 359	both shaft ends have large flat and pin hole	model 068080 4"roller4123031, 219E

Jacobsen ROTARY AR-3 30" DECK - REAR (must confirm shaft configuration on ends)

3" smooth Urethane over steel tubing (two 4" wide bodies)	6.5 lb J3404R3Ct	\$ 399	both shaft ends have large flat and pin hole	non-stripping, improved air flow
3" smooth Steel heavy duty tubing (two 4" wide bodies)	8.5 lb J3404R3St	\$ 359	both shaft ends have large flat and pin hole	non-stripping, improved air flow
3" grooved Urethane cast over heavy duty steel tubing	13.5 lb J3429R3CG	\$ 399	both shaft ends have large flat and pin hole	non-stripping, improved air flow
3" smooth Urethane cast over heavy duty steel tubing	15 lb J3429R3C	\$ 299	both shaft ends have large flat and pin hole	4163083, 4129612, 4163181
3" smooth Steel heavy duty tubing (1/8" wall)	15 lb J3429R3S	\$ 279	both shaft ends have large flat and pin hole	4163083, 4129612, 4163181
3.5" smooth Urethane cast over heavy duty steel tubing	18 lb J3429R7C	\$ 359	both shaft ends have large flat and pin hole	
4" smooth Urethane cast over heavy duty steel tubing	29 lb J3429R4C	\$ 399	both shaft ends have large flat and pin hole	4153038
4" smooth Steel heavy duty tubing (1/8" wall)	29 lb J3429R4S	\$ 359	both shaft ends have large flat and pin hole	4153038

Jacobsen ROTARY AR-250, AR-2500 DECK - REAR

4" smooth Urethane cast over heavy duty steel tubing	27 lb R2722X4C	\$ 399		4115430, 2206195
4" smooth Steel heavy duty tubing (1/8" wall)	27 lb R2722X4S	\$ 359		4115430, 2206195

JOHN DEERE**John Deere 18" 180B & 180C WALKING GREENSMOWERS - FRONT**

4 bodies 4 section 2" smooth Urethane cast over steel tubing	8.5 lb D2119A2C4	\$ 349	4 independent roller bodies on a shaft
4 bodies 4 section 2" smooth Steel extra heavy duty tubing	12 lb D2119A2S4	\$ 299	4 independent roller bodies on a shaft
4 bodies 4 section 2" smooth Steel light tubing (full shaft)	7 lb D2119A2L4	\$ 299	4 independent roller bodies on a shaft
2" grooved Urethane cast over heavy duty steel tubing	6.5 lb D2119A2CG	\$ 229	
2" smooth Urethane cast over heavy duty steel tubing	7.5 lb D2119A2C	\$ 219	
2" smooth Steel extra heavy duty tubing (1/4" wall)	10.5 lb D2119A2S	\$ 159	
2" smooth Steel light tubing (full shaft)	4.5 lb D2119A2L	\$ 119	

John Deere 22" WALKING GREENSMOWERS - FRONT

4 bodies 4 section 2" grooved Steel heavy tubing	10.5 lb D2422P2SG4	\$ 349	4 independent roller bodies on a shaft
4 bodies 4 section 2" smooth Urethane cast over steel tubing	8.5 lb D2422P2C4	\$ 349	4 independent roller bodies on a shaft
4 bodies 4 section 2" smooth Steel extra heavy duty tubing	12 lb D2422P2S4	\$ 299	4 independent roller bodies on a shaft
4 bodies 4 section 2" smooth Steel light tubing (full shaft)	7 lb D2422P2L4	\$ 299	4 independent roller bodies on a shaft
4 bodies 4 section 2.5" grooved Urethane cast over steel tubing	10 lb D2422P25CG4	\$ 399	4 independent roller bodies on a shaft
4 bodies 4 section 2.5" smooth Urethane cast over steel tubing	13 lb D2422P25C4	\$ 349	4 independent roller bodies on a shaft
4 bodies 4 section 2.5" smooth Steel extra heavy duty tubing	13 lb D2422P25S4	\$ 349	4 independent roller bodies on a shaft
2" grooved Urethane cast over heavy duty steel tubing	7 lb D2422P2CG	\$ 229	
2" smooth Urethane cast over heavy duty steel tubing	7.9 lb D2422P2C	\$ 219	
2" smooth Steel extra heavy duty tubing (1/4" wall)	11.5 lb D2422P2S	\$ 179	
2" smooth Steel light tubing (full shaft)	5 lb D2422P2L	\$ 139	
2.5" grooved Urethane cast over heavy duty steel tubing	9 lb D2422P25CG	\$ 269	
2.5" smooth Urethane cast over heavy duty steel tubing	9.5 lb D2422P25C	\$ 239	
2.5" smooth Steel heavy duty tubing (1/8" wall)	10 lb D2422P25S	\$ 199	

John Deere 22" 220 WALKING & 2243 RIDING GREENSMOWERS - FRONT & REAR

4 bodies 4 section 2" smooth Urethane cast over steel tubing	8.5 lb D2522C2C4	\$ 349	4 independent roller bodies on a 25.5" shaft
4 bodies 4 section 2" smooth Steel extra heavy duty tubing	12 lb D2522C2S4	\$ 299	4 independent roller bodies on a 25.5" shaft
4 bodies 4 section 2" smooth Steel light tubing (full shaft)	7 lb D2522C2L4	\$ 299	4 independent roller bodies on a 25.5" shaft
2" grooved Urethane cast over heavy duty steel tubing	7 lb D2522C2CG	\$ 229	22.5" body, 25.5" shaft
2" grooved Steel heavy duty tubing with radius crests	8 lb D2522A2SG	\$ 229	22.5" body & 25.87" shaft
2" smooth Urethane cast over heavy duty steel tubing	7.9 lb D2522C2C	\$ 219	22.5" body, 25.5" shaft
2" smooth Steel extra heavy duty tubing (1/4" wall)	11.5 lb D2522C2S	\$ 159	22.5" body, 25.5" shaft
2" smooth Steel light tubing (full shaft)	5.5 lb D2522C2L	\$ 119	22.5" body, 25.5" shaft
2" smooth Urethane cast over heavy duty steel **PRO line	11 lb 227C	\$ 229	water pump bearing BWP7
2.18" grooved (narrow 3/8" centers) machined Steel tubing	14 lb D2522C21SG38	\$ 239	22 7/8" body width, 25.5" shaft
2.18" grooved (narrow 3/8" centers) machined Aluminum tubing	12 lb D2522C21AG38	\$ 239	22 7/8" body width, 25.5" shaft
2" smooth Steel machined heavy bar **PRO line	19 lb 227SB	\$ 199	water pump bearing BWP7
2" smooth Steel light tubing **PRO line	4 lb 227SL	\$ 119	water pump bearing BWP7

John Deere 22" 2500 GREENSMOWER - FRONT & REAR

4 bodies	4 section 2" smooth Urethane cast over steel tubing	8.5 lb	D2522C2C4	\$ 349	4 independent roller bodies on a 25.5" shaft
4 bodies	4 section 2" smooth Steel extra heavy duty tubing	12 lb	D2522C2S4	\$ 299	4 independent roller bodies on a 25.5" shaft
4 bodies	4 section 2" smooth Steel light tubing (full shaft)	7 lb	D2522C2L4	\$ 299	4 independent roller bodies on a 25.5" shaft
4 bodies	4 section 2.5" grooved Urethane cast over steel tubing	10 lb	D2522C25CG4	\$ 399	4 independent roller bodies on a 25.5" shaft
4 bodies	4 section 2.5" smooth Urethane cast over steel tubing	13 lb	D2522C25C4	\$ 349	4 independent roller bodies on a 25.5" shaft
4 bodies	4 section 2.5" smooth Steel extra heavy duty tubing	13 lb	D2522C25S4	\$ 349	4 independent roller bodies on a 25.5" shaft
	2" grooved Urethane cast over heavy duty steel tubing	7 lb	D2522C2CG	\$ 229	22.5" body, 25.5" shaft
	2" grooved Steel heavy duty tubing with radius crests	8 lb	D2522C2SG	\$ 229	22.5" body & 25.87" shaft
	2" smooth Urethane cast over heavy duty steel tubing	7.9 lb	D2522C2C	\$ 219	22.25" body, 25.5" shaft
	2" smooth Steel extra heavy duty tubing (1/4" wall)	11.5 lb	D2522C2S	\$ 159	22.25" body, 25.5" shaft
	2" smooth Steel light tubing (full shaft)	5.5 lb	D2522CA2L	\$ 119	22.25" body, 25.5" shaft
	2.18" grooved (narrow 3/8" centers) machined Steel tubing	14 lb	D2522C21SG38	\$ 239	22 7/8" body width, 25.5" shaft
	2.18" grooved (narrow 3/8" centers) machined Aluminum tubing	12 lb	D2522C21AG38	\$ 239	22 7/8" body width, 25.5" shaft
	2.5" grooved Urethane cast over heavy duty steel tubing	8.5 lb	D2522C25CG	\$ 259	22.25" body, 25.5" shaft
	2.5" smooth Urethane cast over heavy duty steel tubing	9.5 lb	D2522C25C	\$ 229	22.45" body, 25.5" shaft
	2.5" smooth Steel heavy duty tubing (1/8" wall)	9.2 lb	D2522C25S	\$ 189	22.25" body, 25.5" shaft
	2" smooth Urethane cast over heavy duty steel **PRO line	11 lb	227C	\$ 229	water pump bearing BWP7
	2" smooth Steel machined heavy bar **PRO line	19 lb	227SB	\$ 199	water pump bearing BWP7
	2" smooth Steel light tubing **PRO line	4 lb	227SL	\$ 119	water pump bearing BWP7

John Deere 260SL WALKING GREENSMOWERS - FRONT

	2.5" grooved Urethane cast over heavy duty steel tubing	9.5 lb	D2926A25CG	\$ 269	
	2.5" smooth Urethane cast over heavy duty steel tubing	11 lb	D2926A25C	\$ 249	
	2.5" smooth Steel heavy duty tubing (1/8" wall)	11 lb	D2926A25S	\$ 229	
	2" smooth Urethane cast over heavy duty steel tubing	9.5 lb	D2926A2C	\$ 249	
	2" smooth Steel extra heavy duty tubing (1/4" wall)	12.5 lb	D2926A2S	\$ 219	
	2" smooth Steel light tubing (full shaft)	7 lb	D2926A2L	\$ 199	

John Deere 18" 8000A PRECISION CUT & E-CUT FAIRWAY

	2.5" grooved Urethane cast over heavy duty steel tubing	6.7 lb	D2218A25CG	\$ 329	18.0" body, 22" shaft
	2.5" smooth Urethane cast over heavy duty steel tubing	7.5 lb	D2218A25C	\$ 299	18.0" body, 22" shaft
	2.5" smooth Steel heavy duty tubing (1/8" wall)	9.2 lb	D2218A25S	\$ 259	18.0" body, 22" shaft

To diminish instances of shadowing lines due to overlap of reels

	3 section 2.5" grooved Urethane with 2" wide smooth ends	6.8 lb	D2212A25CG26C	\$ 499	call for proper application specifics
	2.5" smooth Urethane cast over heavy duty steel tubing	7 lb	D2215A25C	\$ 299	front roller for rear mower heads-use with D2215A25C
					rear roller for rear mower heads-use with D2212A25CG26C

John Deere 22" 3215 & 3225 LIGHT FAIRWAY MOWERS - FRONT & REAR

(Sectional rollers with 4 bodies also available)

Combination roller assemblies to diminish effect of reel overlap shadowing are available-please call

	2" grooved Urethane cast over heavy duty steel tubing	7 lb	D2522C2CG	\$ 229	22.5" body, 25.5" shaft
	2" grooved Steel heavy duty tubing with radius crests	8 lb	D2522C2SG	\$ 229	22.5" body & 25.87" shaft
	2" smooth Urethane cast over heavy duty steel tubing	7.9 lb	D2522C2C	\$ 219	22.25" body, 25.5" shaft
	2" smooth Steel extra heavy duty tubing (1/4" wall)	11.5 lb	D2522C2S	\$ 159	22.25" body, 25.5" shaft
	2" smooth Steel light tubing (full shaft)	5.5 lb	D2522C2L	\$ 119	22.25" body, 25.5" shaft
	2" smooth Urethane cast over heavy duty steel **PRO line	11 lb	227C	\$ 229	water pump bearing BWP7
	2.18" grooved (narrow 3/8" centers) machined Steel tubing	14 lb	D2522C21SG38	\$ 239	22 7/8" body width
	2.18" grooved (narrow 3/8" centers) machined Aluminum tubing	12 lb	D2522C21AG38	\$ 239	22 7/8" body width
	2" smooth Steel machined heavy bar **PRO line	19 lb	227SB	\$ 199	water pump bearing BWP7
	2" smooth Steel light tubing **PRO line	4 lb	227SL	\$ 119	water pump bearing BWP7

John Deere 22" 3235 LIGHT FAIRWAY MOWER - FRONT & REAR (2 styles)

(Sectional rollers with 4 bodies also available)

Rollers with 1 flat on one end of the shaft:

	3" grooved Urethane cast over heavy duty steel tubing	9.5 lb	D2522C3CG	\$ 299	1 flat on one end of shaft
	3" smooth Urethane cast over heavy duty steel tubing	12 lb	D2522C3C	\$ 259	1 flat on one end of shaft
	3" smooth Steel heavy duty tubing (1/8" wall)	11.5 lb	D2522C3S	\$ 219	1 flat on one end of shaft

To diminish instances of shadowing lines due to overlap of reels

	3 section 3" grooved Urethane with 2" wide smooth ends	9.5 lb	D2517C3CG26C	\$ 499	call for proper application specifics
	3" smooth Urethane cast over heavy duty steel tubing	11 lb	D2519C3C	\$ 259	front roller for rear mower heads-use with D2519C3C
					rear roller for rear mower heads-use with D2517C3CG26C

Rollers with 2 flats on one end of the shaft:

	3" grooved Urethane cast over heavy duty steel tubing	9.5 lb	D2522F3CG	\$ 299	2 flats on one end of shaft
	3" smooth Urethane cast over heavy duty steel tubing	11 lb	D2522F3C	\$ 259	2 flats on one end of shaft
	3" smooth Steel heavy duty tubing (1/8" wall)	12 lb	D2522F3S	\$ 219	2 flats on one end of shaft

To diminish instances of shadowing lines due to overlap of reels

	3 section 3" grooved Urethane with 2" wide smooth ends	9.5 lb	D2517F3CG26C	\$ 499	call for proper application specifics
	3" smooth Urethane cast over heavy duty steel tubing	11 lb	D2519F3C	\$ 259	front roller for rear mower heads-use with D2519F3C
					rear roller for rear mower heads-use with D2517F3CG26C

John Deere 22" 7500/ 8500 & 7700/ 8700 PRECISION CUT & E-CUT FAIRWAY (QA5 & QA7 reels)

(Sectional rollers with 4 bodies also available)

Rollers with 2 flats on one end of the shaft:

	3 section 3" grooved Urethane with 2" wide smooth ends	9.5 lb	D2517F3CG26C	\$ 499	call for proper application specifics
	3" smooth Urethane cast over heavy duty steel tubing	11 lb	D2519F3C	\$ 259	front roller for rear mower heads-use with D2519F3C
					rear roller for rear mower heads-use with D2517F3CG26C
	3" grooved Urethane cast over heavy duty steel tubing	9.5 lb	D2522F3CG	\$ 299	22.25" body, 25.5" shaft
	3" smooth Urethane cast over heavy duty steel tubing	12 lb	D2522F3C	\$ 259	22.45" body, 25.5" shaft
	3" smooth Steel heavy duty tubing (1/8" wall)	11.5 lb	D2522F3S	\$ 219	22.25" body, 25.5" shaft
	2.5" grooved Urethane cast over heavy duty steel tubing	8.5 lb	D2522F25CG	\$ 259	22.25" body, 25.5" shaft
	2.5" smooth Urethane cast over heavy duty steel tubing	9.5 lb	D2522F25C	\$ 229	22.45" body, 25.5" shaft
	2.5" smooth Steel heavy duty tubing (1/8" wall)	9.2 lb	D2522F25S	\$ 199	22.25" body, 25.5" shaft
	2" grooved Urethane cast over heavy duty steel tubing	7 lb	D2522F2CG	\$ 229	22.5" body, 25.5" shaft
	2" grooved Steel heavy duty tubing with radius crests	8 lb	D2522F2SG	\$ 229	22.5" body & 25.87" shaft
	2" smooth Urethane cast over heavy duty steel tubing	7.9 lb	D2522F2C	\$ 219	22.25" body, 25.5" shaft
	2" smooth Steel extra heavy duty tubing (1/4" wall)	11.5 lb	D2522F2S	\$ 159	22.25" body, 25.5" shaft
	2.18" grooved (narrow 3/8" centers) machined Steel tubing	14 lb	D2522F21SG38	\$ 239	22 7/8" body width, 25.5" shaft
	2.18" grooved (narrow 3/8" centers) machined Aluminum tubing	12 lb	D2522F21AG38	\$ 239	22 7/8" body width, 25.5" shaft

Rollers with 1 flat on one end of the shaft:

To diminish instances of shadowing lines due to overlap of reels				call for proper application specifics	
3 section 3" grooved Urethane with 2" wide smooth ends	9.5 lb	D2517C3CG26C	\$ 499	front roller for rear mower heads-use with D2519C3C	
3" smooth Urethane cast over heavy duty steel tubing	11 lb	D2519C3C	\$ 259	rear roller for rear mower heads-use with D2517C3CG26C	
3" grooved Urethane cast over heavy duty steel tubing	9.5 lb	D2522C3CG	\$ 299	22.25" body, 25.5" shaft	
3" smooth Urethane cast over heavy duty steel tubing	12 lb	D2522C3C	\$ 259	22.45" body, 25.5" shaft	
3" smooth Steel heavy duty tubing (1/8" wall)	11.5 lb	D2522C3S	\$ 219	22.25" body, 25.5" shaft	
2.5" grooved Urethane cast over heavy duty steel tubing	8.5 lb	D2522C25CG	\$ 259	22.25" body, 25.5" shaft	
2.5" smooth Urethane cast over heavy duty steel tubing	9.5 lb	D2522C25C	\$ 229	22.45" body, 25.5" shaft	
2.5" smooth Steel heavy duty tubing (1/8" wall)	9.2 lb	D2522C25S	\$ 199	22.25" body, 25.5" shaft	
2" grooved Urethane cast over heavy duty steel tubing	7 lb	D2522C2CG	\$ 229	22.5" body, 25.5" shaft	
2" grooved Steel heavy duty tubing with radius crests	8 lb	D2522C2SG	\$ 229	22.5" body & 25.87" shaft	
2" smooth Urethane cast over heavy duty steel tubing	7.9 lb	D2522C2C	\$ 219	22.25" body, 25.5" shaft	
2" smooth Steel extra heavy duty tubing (1/4" wall)	11.5 lb	D2522C2S	\$ 159	22.25" body, 25.5" shaft	
2" smooth Steel light tubing (full shaft)	5.5 lb	D2522C2L	\$ 119	22.25" body, 25.5" shaft	
2.18" grooved (narrow 3/8" centers) machined Steel tubing	14 lb	D2522C21SG38	\$ 239	22 7/8" body width, 25.5" shaft	
2.18" grooved (narrow 3/8" centers) machined Aluminum tubing	12 lb	D2522C21AG38	\$ 239	22 7/8" body width, 25.5" shaft	
John Deere 26" 7200, 2653, 2653A & 2653B TRIPLEX - FRONT & REAR				(Sectional rollers with 4 bodies also available)	
3" grooved Urethane cast over heavy duty steel tubing	11.1 lb	D2926B3CG	\$ 299	Shafts with 2 flats on one end	
3" smooth Urethane cast over heavy duty steel tubing	13.5 lb	D2926B3C	\$ 259	Shafts with 2 flats on one end	
3" smooth Steel heavy duty tubing (1/8" wall)	13.5 lb	D2926B3S	\$ 219	Shafts with 2 flats on one end	
John Deere 30" 7200, 2653, 2653A & 2653B TRIPLEX - FRONT & REAR					
3" grooved Urethane cast over heavy duty steel tubing	13.5 lb	D3329B3CG	\$ 299	Shafts with 2 flats on one end	
3" smooth Urethane cast over heavy duty steel tubing	15 lb	D3329B3C	\$ 259	Shafts with 2 flats on one end	
3" smooth Steel heavy duty tubing (1/8" wall)	15 lb	D3329B3S	\$ 219	Shafts with 2 flats on one end	
John Deere 30" 1900, 1905, 3325 FAIRWAY & 3365 TURF PRO & 365 PTO GANG (2 styles)				call to confirm roller options	
3" grooved Urethane cast over heavy duty steel tubing	13.5 lb	D3229B3CG	\$ 299	Shafts with 2 flats on one end	AET10874
3" smooth Urethane cast over heavy duty steel tubing	15 lb	D3229B3C	\$ 259	Shafts with 2 flats on one end	
3" smooth Steel heavy duty tubing (1/8" wall)	15 lb	D3229B3S	\$ 219	Shafts with 2 flats on one end	
3" grooved Urethane cast over heavy duty steel tubing	13.5 lb	D3229A3CG	\$ 299	Shafts with 1 flat on one end	AET10874
3" smooth Urethane cast over heavy duty steel tubing	15 lb	D3229A3C	\$ 259	Shafts with 1 flat on one end	
3" smooth Steel heavy duty tubing (1/8" wall)	15 lb	D3229A3S	\$ 219	Shafts with 1 flat on one end	
John Deere 30" FAIRWAY (305, 303, 756 & 856) - ALL ROLLERS (Choose from 2 styles)				call to confirm roller options	
3" grooved Urethane cast over heavy duty steel tubing	13.5 lb	D3229X3CG	\$ 299	32.25" shaft with .5" dia. ends	
3" smooth Urethane cast over heavy duty steel tubing	15 lb	D3229X3C	\$ 259	32.25" shaft with .5" dia. ends	
3" smooth Steel heavy duty tubing (1/8" wall)	15 lb	D3229X3S	\$ 219	32.25" shaft with .5" dia. ends	
3" grooved Urethane cast over heavy duty steel tubing	13.5 lb	D3029W3CG	\$ 299	30" shaft with 5/8" dia. ends & taps	
3" smooth Urethane cast over heavy duty steel tubing	15 lb	D3029W3C	\$ 259	30" shaft with 5/8" dia. ends & taps	
3" smooth Steel heavy duty tubing (1/8" wall)	15 lb	D3029W3S	\$ 219	30" shaft with 5/8" dia. ends & taps	
John Deere ROTARY 22" 2653 WITH NUNS DECK - REAR					
3" smooth Urethane cast over heavy duty steel tubing	11 lb	D2522C3C	\$ 259		
3" smooth Steel heavy duty tubing (1/8" wall)	12 lb	D2522C3S	\$ 219		
3.5" smooth Urethane cast over heavy duty steel tubing	13.5 lb	D2522C7C	\$ 339		
4" smooth Steel heavy duty tubing (1/8" wall)	20 lb	D2522C4S	\$ 339		
John Deere ROTARY 30" 2653 WITH NUNS DECK - REAR					
3" smooth Urethane cast over heavy duty steel tubing	15 lb	D3229N3C	\$ 269		
3" smooth Steel heavy duty tubing (1/8" wall)	15 lb	D3229N3S	\$ 229		
3.5" smooth Urethane cast over heavy duty steel tubing	18 lb	D3229N7C	\$ 339		
4" smooth Urethane cast over heavy duty steel tubing	23 lb	D3229N4C	\$ 379		
4" smooth Steel heavy duty tubing (1/8" wall)	29 lb	D3229N4S	\$ 329		
John Deere ROTARY DECK 8800 & 3245C - FRONT (With two independent rolling 4" wide roller bodies)					
5" grooved Urethane over steel tubing (two 4" wide bodies)	8 lb	D2304N5CG2t	\$ 399	2 large machined grooves in roller body	TCA26180 & TCA19028
5" smooth Urethane over steel tubing (two 4" wide bodies)	9.3 lb	D2304N5Ct	\$ 299		TCA26180 & TCA19028
John Deere ROTARY DECK 8800 & 3245C & 1565 - REAR (choose from 4 styles to match your needs)					
3" grooved Urethane over steel tubing (two 4" wide bodies)	8 lb	D2304N3CG2t	\$ 359	non-stripping, allows better air flow	
3" smooth Urethane over steel tubing (two 4" wide bodies)	8 lb	D2304N3Ct	\$ 269	non-stripping, allows better air flow	
3" smooth Steel heavy duty tubing (two 4" wide bodies)	10 lb	D2304N3St	\$ 239	non-stripping, allows better air flow	
3" grooved Urethane cast over heavy duty steel tubing	9.5 lb	D2319B3CG	\$ 299	19.25" body & 23" shaft	non-stripping option
3" smooth Urethane cast over heavy duty steel tubing	11 lb	D2319B3C	\$ 259	19.45" body & 23" shaft	TCA16183
3" smooth Steel heavy duty tubing (1/8" wall)	12 lb	D2319B3S	\$ 219	19.25" body & 23" shaft	TCA16183
3.5" smooth Urethane cast over heavy duty steel tubing	13.5 lb	D2319B7C	\$ 339	19.25" body & 23" shaft	
3" smooth Urethane cast over heavy duty steel tubing	11.5 lb	D2419B3C	\$ 259	19.45" body & 24" shaft	
3" smooth Steel heavy duty tubing (1/8" wall)	11 lb	D2419B3S	\$ 219	19.25" body & 24" shaft	
3.5" smooth Urethane cast over heavy duty steel tubing	13.5 lb	D2419B7C	\$ 339	19.25" body & 24" shaft	
3" smooth Urethane cast over heavy duty steel tubing	12 lb	D2522T3C	\$ 259	22.45" body & 25.87" shaft	
3" smooth Steel heavy duty tubing (1/8" wall)	11.5 lb	D2522T3S	\$ 219	22.25" body & 25.87" shaft	
3.5" smooth Urethane cast over heavy duty steel tubing	13.5 lb	D2522T7C	\$ 339	22.25" body & 25.87" shaft	
3" grooved Urethane cast over heavy duty steel tubing	9.5 lb	D2622A3CG	\$ 309	22.25" body & 26.75" shaft	non-stripping option
3" smooth Urethane cast over heavy duty steel tubing	12 lb	D2622A3C	\$ 269	22.45" body & 26.75" shaft	
3" smooth Steel heavy duty tubing (1/8" wall)	11.5 lb	D2622A3S	\$ 229	22.25" body & 26.75" shaft	
3.5" smooth Urethane cast over heavy duty steel tubing	13.5 lb	D2622A7C	\$ 339	22.25" body & 26.75" shaft	
4" smooth Steel heavy duty tubing (1/8" wall)	20 lb	D2622A4S	\$ 339	22.25" body & 26.75" shaft	
John Deere ROTARY DECK 9009A & 7400A (2016 & newer) 27" cut - FRONT (With two independent rolling 5.2" wide roller bodies)					
5" grooved Urethane over steel tubing (two 5.2" wide bodies)	12 lb	D2905N5CG3t	\$ 399	3 machined grooves in roller body	
5" smooth Urethane over steel tubing (two 5.2" wide bodies)	13 lb	D2905N5Ct	\$ 349		BU10125 & TCA25911

John Deere ROTARY DECK 9009A & 7400A (2016 & newer) 27" cut - REAR

3" grooved Urethane over steel tubing (two 5.2" wide bodies)	10 lb	D2905N3CG3t	\$ 359	non-stripping, allows better air flow	
3" smooth Urethane over steel tubing (two 5.2" wide bodies)	10 lb	D2905N3Ct	\$ 329	non-stripping, allows better air flow	
3" smooth Steel heavy duty tubing (two 5.2" wide bodies)	11 lb	D2905N3St	\$ 299	non-stripping, allows better air flow	
3" grooved Urethane cast over heavy duty steel tubing	11 lb	D2926C3CG	\$ 329	26.25" body & 29" shaft	non-stripping option
3" smooth Urethane cast over heavy duty steel tubing	12.5 lb	D2926C3C	\$ 269	26.45" body & 29" shaft	TCA17790
3" smooth Steel heavy duty tubing (1/8" wall)	12.5 lb	D2926C3S	\$ 239	26.25" body & 29" shaft	
3" smooth Urethane cast over heavy duty steel tubing	12.5 lb	D2919C3C	\$ 289	19.45" body & 29" shaft	

John Deere ROTARY 7400 (pre-2016) DECK 27" cut - FRONT CASTER

5" grooved Urethane cast over heavy duty steel tubing	5 lb	D0404G5CG2	\$ 219	2 large machined grooves in roller body	TCA19047 +19H3185 +U44915
5" smooth Urethane cast over heavy duty steel tubing	5 lb	D0404G5C	\$ 139	superior design to OEM roller	TCA19047 +19H3185 +U44915

John Deere ROTARY 7400 (pre 2016) DECK 27" cut - REAR

3" smooth Urethane cast over heavy duty steel tubing	12.5 lb	D2925A3C	\$ 269	25.45" body & 29.25" shaft	TCA17790 (3"),TCA25970
3" smooth Steel heavy duty tubing (1/8" wall)	12.5 lb	D2925A3S	\$ 239	25.25" body & 29.25" shaft	TCA17790 (3"),TCA25970
3.5" smooth Urethane cast over heavy duty steel tubing	13.5 lb	D2925A7C	\$ 339	25.45" body & 29.25" shaft	
4" smooth Steel heavy duty tubing (1/8" wall)	20 lb	D2925A4S	\$ 339	25.25" body & 29.25" shaft	

TORO**Toro 22" GREENSMOWERS - FRONT ROLLERS: series 1000, 3, 300, 3000, 3050, 3100, 3150 (with 3/8"-24 tap in shaft ends)****(Except TriFlex series as follows: 3200, 3250, 3300, 3320, 3400, 3420 & FLEX 21)**

4 bodies 4 section 2" smooth Urethane cast over steel tubing	8.5 lb	T2522S2C4	\$ 349	4 independent roller bodies on a shaft	
4 bodies 4 section 2" smooth Steel extra heavy duty tubing	12 lb	T2522S2S4	\$ 299	4 independent roller bodies on a shaft	
4 bodies 4 section 2" smooth Steel light tubing (full shaft)	7 lb	T2522S2L4	\$ 299	4 independent roller bodies on a shaft	
4 bodies 4 section 2.5" grooved Urethane cast over steel tubing	10 lb	T2522S25CG4	\$ 399	4 independent roller bodies on a shaft	
4 bodies 4 section 2.5" smooth Urethane cast over steel tubing	13 lb	T2522S25C4	\$ 349	4 independent roller bodies on a shaft	
4 bodies 4 section 2.5" smooth Steel extra heavy duty tubing	13 lb	T2522S25S4	\$ 349	4 independent roller bodies on a shaft	
2" grooved Urethane cast over heavy duty steel tubing	7.5 lb	T2522S2CG	\$ 219	22.5" body & 25.87" shaft	52-3200
2" grooved Steel heavy duty tubing with radius crests	8 lb	T2522S2SG	\$ 229	22.5" body & 25.87" shaft	
2" smooth Urethane cast over heavy duty steel tubing	8 lb	T2522S2C	\$ 199	22.25" body & 25.87" shaft	52-3170
2" smooth Steel extra heavy duty tubing (1/4" wall)	11.5 lb	T2522S2S	\$ 159	22.25" body & 25.87" shaft	52-3170
2" smooth Steel light tubing (full shaft)	5.5 lb	T2522S2L	\$ 119	22.25" body & 25.87" shaft	52-3170
2.18" grooved (narrow 3/8" centers) machined Steel tubing	14 lb	T2522S21SG38	\$ 239	22 7/8" body width	
2.18" grooved (narrow 3/8" centers) machined Aluminum tubing	12 lb	T2522S21AG38	\$ 239	22 7/8" body width	
2.5" grooved Urethane cast over heavy duty steel tubing	9 lb	T2522S25CG	\$ 259	22.5" body & 25.87" shaft	
2.5" smooth Urethane cast over heavy duty steel tubing	9.5 lb	T2522S25C	\$ 229	22.45" body & 25.87" shaft	
2.5" smooth Steel heavy duty tubing (1/8" wall)	10 lb	T2522S25S	\$ 189	22.25" body & 25.87" shaft	
2" smooth Urethane cast over heavy duty steel **PRO line	11 lb	224C	\$ 229	water pump bearing BWP4	
2" smooth Steel machined heavy bar **PRO line	19 lb	224SB	\$ 199	water pump bearing BWP4	52-3170
2" smooth Steel light tubing **PRO line	4 lb	224SL	\$ 119	water pump bearing BWP4	52-3170

Toro 22" GREENSMOWERS - REAR ROLLERS: series 3, 300, 3000, 3050, 3100, 3150**(Except TriFlex series as follows: 3200, 3250, 3300, 3320, 3400, 3420 & FLEX 21)**

4 bodies 4 section 2" smooth Urethane cast over steel tubing	8.5 lb	T2522A2C4	\$ 349	4 independent roller bodies on a shaft	
4 bodies 4 section 2" smooth Steel extra heavy duty tubing	12 lb	T2522A2S4	\$ 299	4 independent roller bodies on a shaft	
4 bodies 4 section 2" smooth Steel light tubing (full shaft)	7 lb	T2522A2L4	\$ 299	4 independent roller bodies on a shaft	
4 bodies 4 section 2.5" grooved Urethane cast over steel tubing	10 lb	T2522A25CG4	\$ 399	4 independent roller bodies on a shaft	
4 bodies 4 section 2.5" smooth Urethane cast over steel tubing	13 lb	T2522A25C4	\$ 349	4 independent roller bodies on a shaft	
4 bodies 4 section 2.5" smooth Steel extra heavy duty tubing	13 lb	T2522A25S4	\$ 349	4 independent roller bodies on a shaft	
2" grooved Urethane cast over heavy duty steel tubing	7.5 lb	T2522A2CG	\$ 219	22.5" body & 25.87" shaft	
2" grooved Steel heavy duty tubing with radius crests	8 lb	T2522A2SG	\$ 229	22.5" body & 25.87" shaft	
2" smooth Urethane cast over heavy duty steel tubing	8 lb	T2522A2C	\$ 199	22.25" body & 25.87" shaft	52-3120
2" smooth Steel extra heavy duty tubing (1/4" wall)	11.5 lb	T2522A2S	\$ 159	22.25" body & 25.87" shaft	52-3120
2" smooth Steel light tubing (full shaft)	5.5 lb	T2522A2L	\$ 119	22.25" body & 25.87" shaft	52-3120
2.18" grooved (narrow 3/8" centers) machined Steel tubing	14 lb	T2522A21SG38	\$ 239	22 7/8" body width	
2.18" grooved (narrow 3/8" centers) machined Aluminum tubing	12 lb	T2522A21AG38	\$ 239	22 7/8" body width	
2.5" grooved Urethane cast over heavy duty steel tubing	9 lb	T2522A25CG	\$ 259	22.5" body & 25.87" shaft	
2.5" smooth Urethane cast over heavy duty steel tubing	9.5 lb	T2522A25C	\$ 229	22.45" body & 25.87" shaft	
2.5" smooth Steel heavy duty tubing (1/8" wall)	10 lb	T2522A25S	\$ 189	22.25" body & 25.87" shaft	
2" smooth Urethane cast over heavy duty steel **PRO line	11 lb	223C	\$ 229	water pump bearing BWP3	
2" smooth Steel machined heavy bar **PRO line	19 lb	223SB	\$ 199	water pump bearing BWP3	52-3120
2" smooth Steel light tubing **PRO line	4 lb	223SL	\$ 119	water pump bearing BWP3	52-3120

Toro 22" GREENSMOWERS - BASKET (Yoke) ROLLERS: series 3, 300, 3000, 3050, 3100, 3150 (with 3/8"-24 tap in shaft ends)**(Except TriFlex series as follows: 3200, 3250, 3300, 3320, 3400, 3420 & FLEX 21)**

3" grooved Urethane cast over heavy duty steel tubing	9 lb	T2520H3CG	\$ 279	assembly with body, shaft & bearings	52-2720
3" smooth Urethane cast over heavy duty steel tubing	10.5 lb	T2520H3C	\$ 259	assembly with body, shaft & bearings	52-2720
3" smooth Steel heavy duty tubing	11 lb	T2520H3S	\$ 219	assembly with body, shaft & bearings	52-2720
3.5" smooth Urethane cast over heavy duty steel tubing	12.5 lb	T2520H7C	\$ 269	assembly with body, shaft & bearings	52-2720

Toro 22" TriFlex series GREENSMOWERS - FRONT & REAR ROLLERS: 3200, 3250, 3300, 3320, 3400, 3420**(choose the style to match your needs) (these have solid shaft ends without taps)**

4 bodies 4 section 2" smooth Urethane cast over steel tubing	8.5 lb	T2522A2C4	\$ 349	4 independent roller bodies on a shaft	
4 bodies 4 section 2" smooth Steel extra heavy duty tubing	12 lb	T2522A2S4	\$ 299	4 independent roller bodies on a shaft	
4 bodies 4 section 2" smooth Steel light tubing (full shaft)	7 lb	T2522A2L4	\$ 299	4 independent roller bodies on a shaft	
4 bodies 4 section 2.5" grooved Urethane cast over steel tubing	10 lb	T2522A25CG4	\$ 399	4 independent roller bodies on a shaft	
4 bodies 4 section 2.5" smooth Urethane cast over steel tubing	9 lb	T2522A25C4	\$ 349	4 independent roller bodies on a shaft	
4 bodies 4 section 2.5" smooth Steel extra heavy duty tubing	13 lb	T2522A25S4	\$ 349	4 independent roller bodies on a shaft	

2" grooved Urethane cast over heavy duty steel tubing	7.5 lb	T2522A2CG	\$ 219	22.5" body & 25.87" shaft	
2" grooved Steel heavy duty tubing with radius crests	8 lb	T2522A2SG	\$ 229	22.5" body & 25.87" shaft	
2" smooth Urethane cast over heavy duty steel tubing	8 lb	T2522A2C	\$ 199	22.25" body & 25.87" shaft	52-3120
2" smooth Steel extra heavy duty tubing (1/4" wall)	11.5 lb	T2522A2S	\$ 159	22.25" body & 25.87" shaft	52-3120
2" smooth Steel light tubing (full shaft)	5.5 lb	T2522A2L	\$ 119	22.25" body & 25.87" shaft	52-3120
2.18" grooved (narrow 3/8" centers) machined Steel tubing	14 lb	T2522A21SG38	\$ 239	22 7/8" body width	
2.18" grooved (narrow 3/8" centers) machined Aluminum tubing	12 lb	T2522A21AG38	\$ 239	22 7/8" body width	
2.5" grooved Urethane cast over heavy duty steel tubing	9 lb	T2522A25CG	\$ 259	22.25" body & 25.87" shaft	
2.5" smooth Urethane cast over heavy duty steel tubing	9.5 lb	T2522A25C	\$ 229	22.45" body & 25.87" shaft	115-7388
2.5" smooth Steel heavy duty tubing (1/8" wall)	10 lb	T2522A25S	\$ 189	22.25" body & 25.87" shaft	115-7388
2" smooth Urethane cast over heavy duty steel tubing	8 lb	T2421B2C	\$ 199	21.25" body & 24" shaft	
2" smooth Steel extra heavy duty tubing (1/4" wall)	11.5 lb	T2421B2S	\$ 159	21.25" body & 24" shaft	
2" smooth Steel light tubing (full shaft)	5.5 lb	T2421B2L	\$ 119	21.25" body & 24" shaft	
2.5" grooved Urethane cast over heavy duty steel tubing	9 lb	T2421B25CG	\$ 259	21.25" body & 24" shaft	
2.5" smooth Urethane cast over heavy duty steel tubing	9.5 lb	T2421B25C	\$ 229	21.45" body & 24" shaft	
2.5" smooth Steel heavy duty tubing (1/8" wall)	10 lb	T2421B25S	\$ 189	21.25" body & 24" shaft	
2" smooth Urethane cast over heavy duty steel **PRO line	11 lb	223C	\$ 229	water pump bearing BWP3	
2" smooth Steel machined heavy bar **PRO line	19 lb	223SB	\$ 199	water pump bearing BWP3	52-3120
2" smooth Steel light tubing **PRO line	4 lb	223SL	\$ 119	water pump bearing BWP3	52-3120

Toro FLEX 21 GREENSMOWER - FRONT & REAR

4 bodies 4 section 2" smooth Urethane cast over steel tubing	8.5 lb	T2522A2C4	\$ 349	4 independent roller bodies on a shaft	
4 bodies 4 section 2" smooth Steel extra heavy duty tubing	12 lb	T2522A2S4	\$ 299	4 independent roller bodies on a shaft	
4 bodies 4 section 2" smooth Steel light tubing (full shaft)	7 lb	T2522A2L4	\$ 299	4 independent roller bodies on a shaft	
4 bodies 4 section 2.5" grooved Urethane cast over steel tubing	10 lb	T2522A25CG4	\$ 399	4 independent roller bodies on a shaft	
4 bodies 4 section 2.5" smooth Urethane cast over steel tubing	9 lb	T2522A25C4	\$ 349	4 independent roller bodies on a shaft	
4 bodies 4 section 2.5" smooth Steel extra heavy duty tubing	13 lb	T2522A25S4	\$ 349	4 independent roller bodies on a shaft	
2" grooved Urethane cast over heavy duty steel tubing	7.5 lb	T2522A2CG	\$ 219	22.5" body & 25.87" shaft	
2" grooved Steel heavy duty tubing with radius crests	8 lb	T2522A2SG	\$ 229	22.5" body & 25.87" shaft	
2" smooth Urethane cast over heavy duty steel tubing	8 lb	T2522A2C	\$ 199	22.25" body & 25.87" shaft	52-3120
2" smooth Steel extra heavy duty tubing (1/4" wall)	11.5 lb	T2522A2S	\$ 159	22.25" body & 25.87" shaft	52-3120
2" smooth Steel light tubing (full shaft)	5.5 lb	T2522A2L	\$ 119	22.25" body & 25.87" shaft	52-3120
2.18" grooved (narrow 3/8" centers) machined Steel tubing	14 lb	T2522A21SG38	\$ 239	22 7/8" body width	
2.18" grooved (narrow 3/8" centers) machined Aluminum tubing	12 lb	T2522A21AG38	\$ 239	22 7/8" body width	
2.5" grooved Urethane cast over heavy duty steel tubing	9 lb	T2522A25CG	\$ 259	22.25" body & 25.87" shaft	
2.5" smooth Urethane cast over heavy duty steel tubing	9.5 lb	T2522A25C	\$ 229	22.45" body & 25.87" shaft	
2.5" smooth Steel heavy duty tubing (1/8" wall)	10 lb	T2522A25S	\$ 189	22.25" body & 25.87" shaft	
2" smooth Urethane cast over heavy duty steel **PRO line	11 lb	223C	\$ 229	water pump bearing BWP3	
2" smooth Steel machined heavy bar **PRO line	19 lb	223SB	\$ 199	water pump bearing BWP3	52-3120
2" smooth Steel light tubing **PRO line	4 lb	223SL	\$ 119	water pump bearing BWP3	52-3120

Toro FLEX 18 GREENSMOWER - FRONT & REAR

4 bodies 4 section 2" smooth Urethane cast over steel tubing	7.6 lb	T2319C2C4	\$ 349	4 independent roller bodies on a shaft	
4 bodies 4 section 2" smooth Steel extra heavy duty tubing	12 lb	T2319C2S4	\$ 299	4 independent roller bodies on a shaft	
4 bodies 4 section 2" smooth Steel light tubing (full shaft)	7 lb	T2319C2L4	\$ 299	4 independent roller bodies on a shaft	
2" grooved Urethane cast over heavy duty steel tubing	6.5 lb	T2319C2CG	\$ 219		
2" smooth Urethane cast over heavy duty steel tubing	7.5 lb	T2319C2C	\$ 199		
2" smooth Steel extra heavy duty tubing (1/4" wall)	10.5 lb	T2319C2S	\$ 159		
2" smooth Steel light tubing (full shaft)	4.5 lb	T2319C2L	\$ 129		
2" smooth Steel machined heavy bar **PRO line	18 lb	283SB	\$ 199	water pump bearing BWP3	
2" smooth Steel light tubing **PRO line	4 lb	283SL	\$ 119	water pump bearing BWP3	

Toro GM800 18" GREENSMOWER - FRONT & REAR

4 bodies 4 section 2" smooth Urethane cast over steel tubing	7.6 lb	T2219S2C4	\$ 349	4 independent roller bodies on a shaft	
4 bodies 4 section 2" smooth Steel extra heavy duty tubing	12 lb	T2219S2S4	\$ 299	4 independent roller bodies on a shaft	
4 bodies 4 section 2" smooth Steel light tubing (full shaft)	7 lb	T2219S2L4	\$ 299	4 independent roller bodies on a shaft	
2" grooved Urethane cast over heavy duty steel tubing	6.5 lb	T2219S2CG	\$ 219		
2" smooth Urethane cast over heavy duty steel tubing	7.5 lb	T2219S2C	\$ 199		
2" smooth Steel extra heavy duty tubing (1/4" wall)	10.5 lb	T2219S2S	\$ 159		
2" smooth Steel light tubing (full shaft)	4.5 lb	T2219S2L	\$ 119		
2" smooth Steel machined heavy bar **PRO line	18 lb	294SB	\$ 199	water pump bearing BWP4	
2" smooth Steel light tubing **PRO line	4 lb	294SL	\$ 119	water pump bearing BWP4	

Toro GM1600 26" GREENSMOWER - FRONT & REAR

4 bodies 4 section 2.5" grooved Urethane cast over steel tubing	10 lb	T3127A25CG4	\$ 399	4 independent roller bodies on a shaft	
4 bodies 4 section 2.5" smooth Urethane cast over steel tubing	10 lb	T3127A25C4	\$ 349	4 independent roller bodies on a shaft	
4 bodies 4 section 2.5" smooth Steel extra heavy duty tubing	13 lb	T3127A25S4	\$ 349	4 independent roller bodies on a shaft	
2.5" grooved Urethane cast over heavy duty steel tubing	11 lb	T3127A25CG	\$ 259		
2.5" smooth Urethane cast over heavy duty steel tubing	11 lb	T3127A25C	\$ 229		
2.5" smooth Steel heavy duty tubing (1/8" wall)	11.5 lb	T3127A25S	\$ 189		

Toro 3550D - FRONT

(Sectional rollers with 4 bodies also available)

2.5" grooved Urethane cast over heavy duty steel tubing	8 lb	T2118T25CG	\$ 269	18.25" body & 21.5" shaft	
---	------	------------	--------	---------------------------	--

Toro 5100D, 5300D & 223D - FRONT

(Sectional rollers with 4 bodies also available)

Combination roller assemblies to diminish effect of reel overlap shadowing are available-please call					
2.5" grooved Urethane cast over heavy duty steel tubing	9 lb	T2522A25CG	\$ 259	22.25" body & 25.87" shaft	75-1520
2.5" smooth Urethane cast over heavy duty steel tubing	9.5 lb	T2522A25C	\$ 229	22.45" body & 25.87" shaft	
2.5" smooth Steel heavy duty tubing (1/8" wall)	10 lb	T2522A25S	\$ 189	22.25" body & 25.87" shaft	

Toro 5100D, 5300D & 223D - REAR

(Sectional rollers with 4 bodies also available)

2" grooved Urethane cast over heavy duty steel tubing	6.5 lb	T2319A2CG	\$ 219		
2" smooth Urethane cast over heavy duty steel tubing	7.5 lb	T2319A2C	\$ 199		940694
2" smooth Steel extra heavy duty tubing (1/4" wall)	10.5 lb	T2319A2S	\$ 159		940694

2" smooth Steel light tubing (full shaft)	4.5 lb T2319A2L	\$ 119	
2" smooth Steel machined heavy bar **PRO line	19 lb 293SB	\$ 199	water pump bearing BWP3
2" smooth Steel light tubing **PRO line	4 lb 293SL	\$ 119	water pump bearing BWP3
Toro 5200D, 5210D, 5400D, 5410D, 5510D & 5610D - FRONT		(Sectional rollers with 4 bodies also available)	
Combination roller assemblies to diminish effect of reel overlap shadowing are available-please call			
3" grooved Urethane cast over heavy duty steel tubing	9.5 lb T2722A3CG	\$ 299	22.25" body & 27" shaft 1009906
3" smooth Urethane cast over heavy duty steel tubing	12 lb T2722A3C	\$ 259	22.45" body & 27" shaft 99-5749
3" smooth Steel heavy duty tubing (1/8" wall)	11.5 lb T2722A3S	\$ 209	22.25" body & 27" shaft 99-5749
3" grooved Urethane cast over heavy duty steel tubing	9.5 lb T2724A3CG	\$ 299	24.25" body & 27" shaft 114-5400
3" smooth Urethane cast over heavy duty steel tubing	12 lb T2724A3C	\$ 259	24.45" body & 27" shaft
3" smooth Steel heavy duty tubing (1/8" wall)	11.5 lb T2724A3S	\$ 209	24.25" body & 27" shaft 99-5749
Toro 5200D, 5210D, 5400D, 5410D, 5510D & 5610D - REAR		(Sectional rollers with 4 bodies also available)	
3" grooved Urethane cast over heavy duty steel tubing	9.5 lb T2522C3CG	\$ 299	22.25" body & 25.5" shaft
3" smooth Urethane cast over heavy duty steel tubing	12 lb T2522C3C	\$ 259	22.45" body & 25.5" shaft
3" smooth Steel heavy duty tubing (1/8" wall)	11.5 lb T2522C3S	\$ 209	22.25" body & 25.5" shaft
3" grooved Urethane cast over heavy duty steel tubing	9 lb T2519A3CG	\$ 299	19.25" body & 25" shaft
3" smooth Urethane cast over heavy duty steel tubing	11 lb T2519A3C	\$ 259	19.45" body & 25" shaft
3" smooth Steel heavy duty tubing (1/8" wall)	11 lb T2519A3S	\$ 209	19.25" body & 25" shaft
2.5" grooved Urethane cast over heavy duty steel tubing	8.5 lb T2522C25CG	\$ 259	22.25" body & 25.5" shaft
2.5" smooth Urethane cast over heavy duty steel tubing	9.5 lb T2522C25C	\$ 229	22.45" body & 25.5" shaft 114-5406
2.5" smooth Steel heavy duty tubing (1/8" wall)	10 lb T2522C25S	\$ 189	22.25" body & 25.5" shaft 114-5406
2.5" grooved Urethane cast over heavy duty steel tubing	8.5 lb T2521C25CG	\$ 259	21.25" body & 25.5" shaft
2.5" smooth Urethane cast over heavy duty steel tubing	9.5 lb T2521C25C	\$ 229	21.45" body & 25.5" shaft 114-5406
2.5" smooth Steel heavy duty tubing (1/8" wall)	10 lb T2521C25S	\$ 189	21.25" body & 25.5" shaft 114-5406
2.5" grooved Urethane cast over heavy duty steel tubing	8 lb T2519A25CG	\$ 259	19.25" body & 25" shaft
2.5" smooth Urethane cast over heavy duty steel tubing	9 lb T2519A25C	\$ 229	19.45" body & 25" shaft
2.5" smooth Steel heavy duty tubing (1/8" wall)	9 lb T2519A25S	\$ 189	19.25" body & 25" shaft
2.5" grooved Urethane cast over heavy duty steel tubing	8.5 lb T2321A25CG	\$ 259	21.25" body & 23.75" shaft
2.5" smooth Urethane cast over heavy duty steel tubing	9.5 lb T2321A25C	\$ 229	21.45" body & 23.75" shaft
2.5" smooth Steel heavy duty tubing (1/8" wall)	9.2 lb T2321A25S	\$ 189	21.25" body & 23.75" shaft
2.5" grooved Urethane cast over heavy duty steel tubing	8 lb T2319A25CG	\$ 259	19.25" body & 23" shaft
2.5" smooth Urethane cast over heavy duty steel tubing	9 lb T2319A25C	\$ 229	19.45" body & 23" shaft
2.5" smooth Steel heavy duty tubing (1/8" wall)	9 lb T2319A25S	\$ 189	19.25" body & 23" shaft
2" smooth Urethane cast over heavy duty steel tubing	8 lb T2321A2C	\$ 199	21.25" body & 23.75" shaft
2" smooth Steel extra heavy duty tubing (1/4" wall)	11.5 lb T2321A2S	\$ 159	21.25" body & 23.75" shaft
2" smooth Steel light tubing (full shaft)	5.5 lb T2321A2L	\$ 119	21.25" body & 23.75" shaft
2" grooved Urethane cast over heavy duty steel tubing	6.5 lb T2519A2CG	\$ 219	19.25" body & 25" shaft
2" smooth Urethane cast over heavy duty steel tubing	7.5 lb T2519A2C	\$ 199	19.25" body & 25" shaft
2" smooth Steel extra heavy duty tubing (1/4" wall)	10.5 lb T2519A2S	\$ 159	19.25" body & 25" shaft
2" smooth Steel light tubing (full shaft)	4.5 lb T2519A2L	\$ 119	19.25" body & 25" shaft
2" grooved Urethane cast over heavy duty steel tubing	6.5 lb T2319A2CG	\$ 219	19.25" body & 23" shaft
2" smooth Urethane cast over heavy duty steel tubing	7.5 lb T2319A2C	\$ 199	19.25" body & 23" shaft 940694
2" smooth Steel extra heavy duty tubing (1/4" wall)	10.5 lb T2319A2S	\$ 159	19.25" body & 23" shaft 940694
2" smooth Steel light tubing (full shaft)	4.5 lb T2319A2L	\$ 119	19.25" body & 23" shaft
2" smooth Steel machined heavy bar **PRO line	19 lb 293SB	\$ 199	19.25" body & 23" shaft water pump bearing BWP3
2" smooth Steel light tubing **PRO line	4 lb 293SL	\$ 119	19.25" body & 23" shaft water pump bearing BWP3
Toro 5500D, 6500D & 6700D - FRONT		(Sectional rollers with 4 bodies also available)	
3" grooved Urethane cast over heavy duty steel tubing	9.5 lb T2722A3CG	\$ 299	22.25" body & 27" shaft 1009906
3" smooth Urethane cast over heavy duty steel tubing	12 lb T2722A3C	\$ 259	22.45" body & 27" shaft 99-5749
3" smooth Steel heavy duty tubing (1/8" wall)	11.5 lb T2722A3S	\$ 209	22.25" body & 27" shaft 99-5749
3" grooved Urethane cast over heavy duty steel tubing	9.5 lb T2724A3CG	\$ 299	24.25" body & 27" shaft 114-5400
3" smooth Urethane cast over heavy duty steel tubing	12 lb T2724A3C	\$ 259	24.45" body & 27" shaft 99-5749
3" smooth Steel heavy duty tubing (1/8" wall)	11.5 lb T2724A3S	\$ 209	24.25" body & 27" shaft 99-5749
To diminish instances of shadowing lines due to overlap of reels call for proper application specifics			
3 section 3" grooved Urethane with 2" wide smooth ends	9.5 lb T2717A3CG26C	\$ 499	front roller for rear mower heads-use with T2719A3C
3" smooth Urethane cast over heavy duty steel tubing (please confirm diameter of body and length of shaft required to fit rear)	11 lb T2719A3C	\$ 259	rear roller for rear mower heads-use with T2717A3CG26C
Toro 5500D, 6500D & 6700D - REAR (Choose from 6 styles)		(Sectional rollers with 4 bodies also available)	
3" grooved Urethane cast over heavy duty steel tubing	9.5 lb T2722A3CG	\$ 299	22.25" body & 27" shaft 1009906
3" smooth Urethane cast over heavy duty steel tubing	12 lb T2722A3C	\$ 259	22.45" body & 27" shaft 99-5749
3" smooth Steel heavy duty tubing (1/8" wall)	11.5 lb T2722A3S	\$ 209	22.25" body & 27" shaft 99-5749
3" grooved Urethane cast over heavy duty steel tubing	9.5 lb T2724A3CG	\$ 299	24.25" body & 27" shaft 114-5400
3" smooth Urethane cast over heavy duty steel tubing	12 lb T2724A3C	\$ 259	24.45" body & 27" shaft 99-5749
3" smooth Steel heavy duty tubing (1/8" wall)	11.5 lb T2724A3S	\$ 209	24.25" body & 27" shaft 99-5749
3" grooved Urethane cast over heavy duty steel tubing	9.5 lb T2522A3CG	\$ 299	22.25" body & 25.87" shaft
3" smooth Urethane cast over heavy duty steel tubing	12 lb T2522A3C	\$ 259	22.45" body & 25.87" shaft
3" smooth Steel heavy duty tubing (1/8" wall)	11.5 lb T2522A3S	\$ 209	22.25" body & 25.87" shaft
2.5" grooved Urethane cast over heavy duty steel tubing	9 lb T2522A25CG	\$ 259	22.25" body & 25.87" shaft
2.5" smooth Urethane cast over heavy duty steel tubing	9.5 lb T2522A25C	\$ 229	22.45" body & 25.87" shaft
2.5" smooth Steel heavy duty tubing (1/8" wall)	10 lb T2522A25S	\$ 189	22.25" body & 25.87" shaft
2.5" grooved Urethane cast over heavy duty steel tubing	8 lb T2519A25CG	\$ 259	19.25" body & 25" shaft
2.5" smooth Urethane cast over heavy duty steel tubing	9 lb T2519A25C	\$ 229	19.45" body & 25" shaft
2.5" smooth Steel heavy duty tubing (1/8" wall)	9 lb T2519A25S	\$ 189	19.25" body & 25" shaft

2.5" grooved Urethane cast over heavy duty steel tubing	9 lb T2422A25CG	\$ 259	22.25" body & 24.5" shaft	
2.5" smooth Urethane cast over heavy duty steel tubing	9.5 lb T2422A25C	\$ 229	22.45" body & 24.5" shaft	
2.5" smooth Steel heavy duty tubing (1/8" wall)	10 lb T2422A25S	\$ 189	22.25" body & 24.5" shaft	
2.5" grooved Urethane cast over heavy duty steel tubing	8.5 lb T2421A25CG	\$ 259	21.25" body & 24.5" shaft	
2.5" smooth Urethane cast over heavy duty steel tubing	9.5 lb T2421A25C	\$ 229	21.45" body & 24.5" shaft	
2.5" smooth Steel heavy duty tubing (1/8" wall)	10 lb T2421A25S	\$ 189	21.25" body & 24.5" shaft	
2.5" grooved Urethane cast over heavy duty steel tubing	8 lb T2419A25CG	\$ 259	19.25" body & 24.5" shaft	
2.5" smooth Urethane cast over heavy duty steel tubing	9 lb T2419A25C	\$ 229	19.45" body & 24.5" shaft	
2.5" smooth Steel heavy duty tubing (1/8" wall)	9 lb T2419A25S	\$ 189	19.25" body & 24.5" shaft	
Toro 27" SIDEWINDER, 27" 3100D, 27" 2300D & 216 - FRONT & REAR (Sectional rollers with 4 bodies also available)				
2.5" grooved Urethane cast over heavy duty steel tubing	10 lb T3026D25CG	\$ 259	26.45" body & 30" shaft	92-7410, 104-1385
2.5" smooth Urethane cast over heavy duty steel tubing	11 lb T3026D25C	\$ 229	26.45" body & 30" shaft	61-0410
2.5" smooth Steel heavy duty tubing (1/8" wall)	11.5 lb T3026D25S	\$ 189	26.25" body & 30" shaft	61-0410
3" grooved Urethane cast over heavy duty steel tubing	12.5 lb T3026D3CG	\$ 299	26.45" body & 30" shaft	
3" smooth Urethane cast over heavy duty steel tubing	13 lb T3026D3C	\$ 259	26.45" body & 30" shaft	
3" smooth Steel heavy duty tubing (1/8" wall)	13 lb T3026D3S	\$ 209	26.25" body & 30" shaft	
3" grooved Urethane cast over heavy duty steel tubing	12.8 lb T3227D3CG	\$ 299	27.45" body & 32" shaft	front 114-9383, rear 112-8915
3" smooth Urethane cast over heavy duty steel tubing	13.3 lb T3227D3C	\$ 259	27.45" body & 32" shaft	front 114-9383, rear 112-8915
3" smooth Steel heavy duty tubing (1/8" wall)	13.3 lb T3227D3S	\$ 209	27.25" body & 32" shaft	front 114-9383, rear 112-8915
Toro 32" SIDEWINDER, 32" 3100D & 2600D & 2300D - FRONT				
3" grooved Urethane cast over heavy duty steel tubing	14 lb T3431U3CG	\$ 309		
3" smooth Steel heavy duty tubing (1/8" wall)	15 lb T3431U3S	\$ 239		
2.5" grooved Urethane cast over heavy duty steel tubing	13 lb T3431U25CG	\$ 279		94-4993, 104-1388
2.5" smooth Steel heavy duty tubing (1/8" wall)	12.5 lb T3431U25S	\$ 229		
Toro 32" SIDEWINDER, 32" 3100D & 2600D & 2300D - REAR				
2.5" smooth Urethane cast over heavy duty steel tubing	12.5 lb T3429U25C	\$ 239		94-4982
2.5" smooth Steel heavy duty tubing (1/8" wall)	12.5 lb T3429U25S	\$ 229		94-4982
3" smooth Urethane cast over heavy duty steel tubing	15 lb T3429U3C	\$ 259		
3" smooth Steel heavy duty tubing (1/8" wall)	14.5 lb T3429U3S	\$ 229		
Toro REEL MOWERS 4500D, 4300D, 4000D, 3500D, 450D, 335D & 350D - FRONT				
3" grooved Urethane cast over heavy duty steel tubing	14.5 lb T3732K3CG	\$ 299	Fits 36" or 37" shaft	
3" smooth Steel heavy duty tubing (1/8" wall)	16 lb T3732K3S	\$ 239	Fits 36" or 37" shaft	
3" grooved Urethane cast over heavy duty steel tubing	13.5 lb T3229T3CG	\$ 299	Fits 32" shaft	
3" smooth Urethane cast over heavy duty steel tubing	15 lb T3229T3C	\$ 259	Fits 32" shaft	
3" smooth Steel heavy duty tubing (1/8" wall)	15 lb T3229T3S	\$ 219	Fits 32" shaft	
Toro REEL MOWERS 4500D, 4000D, 3500D, 450D, 335D, & 350D - REAR				
3" smooth Urethane cast over heavy duty steel tubing	15 lb T3429K3C	\$ 259		
3" smooth Steel heavy duty tubing (1/8" wall)	15 lb T3429K3S	\$ 209		
3.5" smooth Urethane cast over heavy duty steel tubing	18 lb T3429K7C	\$ 339		59-5630
4" smooth Urethane cast over heavy duty steel tubing	30 lb T3429K4C	\$ 399		
4" smooth Steel heavy duty tubing (1/8" wall)	29 lb T3429K4S	\$ 359		
Toro SPARTAN FAIRWAY, REELMASTER GANG, TURF PRO & PARKMASTER GANG				
3" smooth Urethane cast over heavy duty steel tubing	14 lb T3227J3C	\$ 259		
3" smooth Steel heavy duty tubing (1/8" wall)	13.5 lb T3227J3S	\$ 219		8-3990
3.5" smooth Urethane cast over heavy duty steel tubing	17 lb T3227J7C	\$ 339		8-3990, 5-3939
4" smooth Steel heavy duty tubing (1/8" wall)	27 lb T3227J4S	\$ 359		
Toro ROTARY DECK 4500D, 4700D, 3500D & 3505D - FRONT (includes our Competition bearings™, seals™ and roller shaft)				
5" grooved Urethane cast over steel tubing w/ bearings/seals	5 lb T0505G5CG2	\$ 219	2 large machined grooves in roller body	104-1092 + 115-3412
5" Urethane cast over steel tubing w/ bearings and seals	5 lb T0505G5C	\$ 139	do not need OEM 5/8" dia. bolt	104-1092 + 115-3412+115-3418
Toro ROTARY DECK 4500D, 4700D, 3500D & 3505D - REAR				
3" grooved Urethane over steel tubing (two 4" wide bodies)	10.5 lb T3304N3CG2t	\$ 359	non-stripping, allows better air flow	
3" smooth Urethane over steel tubing (two 4" wide bodies)	11 lb T3304N3Ct	\$ 329	non-stripping, allows better air flow	
3" smooth Steel heavy duty tubing (two 4" wide bodies)	12 lb T3304N3St	\$ 299	non-stripping, allows better air flow	
3" grooved Urethane cast over heavy duty steel tubing	13.5 lb T3329A3CG	\$ 299	non-stripping, allows better air flow	
3" smooth Urethane cast over heavy duty steel tubing	15 lb T3329A3C	\$ 259		112-5265
3" smooth Steel heavy duty tubing (1/8" wall)	15 lb T3329A3S	\$ 219		112-5265
3.5" smooth Urethane cast over heavy duty steel tubing	18 lb T3329A7C	\$ 339		
Toro ROTARY DECK 4300D - FRONT (with extended shaft) (includes our Competition bearings™, seals™ and roller shaft)				
5" grooved Urethane cast over steel tubing w/ bearings/seals	5 lb T0705G5CG2	\$ 219	2 large machined grooves in roller body	115-3418 + 114-0430
5" Urethane cast over steel tubing w/ bearings and seals	5.5 lb T0705G5C	\$ 139	do not need OEM 5/8" dia. bolt	115-3418 + 114-0430
Toro ROTARY DECK 4300D - REAR				
3" grooved Urethane over steel tubing (two 4" wide bodies)	10.5 lb T2804N3CG2t	\$ 359	non-stripping, allows better air flow	
3" smooth Urethane over steel tubing (two 4" wide bodies)	11 lb T2804N3Ct	\$ 329	non-stripping, allows better air flow	
3" smooth Steel heavy duty tubing (two 4" wide bodies)	12 lb T2804N3St	\$ 299	non-stripping, allows better air flow	
3" grooved Urethane cast over heavy duty steel tubing	11 lb T2824K3CG	\$ 299		
3" smooth Urethane cast over heavy duty steel tubing	12 lb T2824K3C	\$ 259		108-7387
3" smooth Steel heavy duty tubing (1/8" wall)	11 lb T2824K3S	\$ 219		108-7387
3.5" smooth Urethane cast over heavy duty steel tubing	17 lb T2824K7C	\$ 339		
Toro 22" VERTICUT heads (Call to confirm dimensions of your roller) (Sectional rollers with 4 bodies also available)				
2" smooth Steel extra heavy duty tubing (1/4" wall)	10 lb T2419A2S	\$ 139	19.25" body & 24" shaft	
2" smooth Steel light tubing (full shaft)	5 lb T2419A2L	\$ 119	19.25" body & 24" shaft	
2" smooth Steel extra heavy duty tubing (1/4" wall)	10.5 lb T2321A2S	\$ 159	21.25" body & 23" shaft	
2" smooth Steel light tubing (full shaft)	5.5 lb T2321A2L	\$ 119	21.25" body & 23" shaft	

RANSOMES ALL 22" GREENSPLEX & E-PLEX - FRONT

4 bodies	4 section 2" smooth Urethane cast over steel tubing	8.5 lb	R2522A2C4	\$ 349	4 independent roller bodies on a shaft	
4 bodies	4 section 2" smooth Steel extra heavy duty tubing	12 lb	R2522A2S4	\$ 299	4 independent roller bodies on a shaft	
4 bodies	4 section 2" smooth Steel light tubing (full shaft)	7 lb	R2522A2L4	\$ 299	4 independent roller bodies on a shaft	
4 bodies	4 section 2.5" grooved Urethane cast over steel tubing	10.5 lb	R2522A25CG4	\$ 399	4 independent roller bodies on a shaft	68673
4 bodies	4 section 2.5" smooth Urethane cast over steel tubing	8.5 lb	R2522A25C4	\$ 349	4 independent roller bodies on a shaft	
4 bodies	4 section 2.5" smooth Steel extra heavy duty tubing	12 lb	R2522A25S4	\$ 349	4 independent roller bodies on a shaft	
	2" grooved Urethane cast over heavy duty steel tubing	7.5 lb	R2522A2CG	\$ 229		68527
	2" smooth Urethane cast over heavy duty steel tubing	8 lb	R2522A2C	\$ 209		
	2" smooth Steel extra heavy duty tubing (1/4" wall)	11.5 lb	R2522A2S	\$ 159		68641
	2" smooth Steel light tubing (full shaft)	5.5 lb	R2522A2L	\$ 119		1004991, 68530
	2.18" grooved (narrow 3/8" centers) machined Steel tubing	14 lb	R2522A21SG38	\$ 239	22 7/8" body width	
	2.18" grooved (narrow 3/8" centers) machined Aluminum tubing	12 lb	R2522A21AG38	\$ 239	22 7/8" body width	
	2.5" grooved Urethane cast over heavy duty steel tubing	9 lb	R2522A25CG	\$ 259		
	2.5" smooth Urethane cast over heavy duty steel tubing	9.5 lb	R2522A25C	\$ 229		
	2.5" smooth Steel heavy duty tubing (1/8" wall)	10 lb	R2522A25S	\$ 189		
	2" smooth Urethane cast over heavy duty steel **PRO line	11 lb	223C	\$ 229	water pump bearing BWP3	
	2" smooth Steel machined heavy bar **PRO line	19 lb	223SB	\$ 199	water pump bearing BWP3	68641
	2" smooth Steel light tubing **PRO line	4 lb	223SL	\$ 119	water pump bearing BWP3	

RANSOMES 300 & 500 GREENSMOWERS - REAR ROLLERS

4 bodies	4 section 2" smooth Urethane cast over steel tubing	8.5 lb	R2422S2C4	\$ 349	3/8"-24 taps in shaft ends	
4 bodies	4 section 2" smooth Steel extra heavy duty tubing	12 lb	R2422S2S4	\$ 299	3/8"-24 taps in shaft ends	
4 bodies	4 section 2" smooth Steel light tubing (full shaft)	7 lb	R2422S2L4	\$ 299	3/8"-24 taps in shaft ends	
4 bodies	4 section 2" smooth Urethane cast over steel tubing	8.5 lb	R2422G2C4	\$ 349	7/16"-20 taps in shaft ends	
4 bodies	4 section 2" smooth Steel extra heavy duty tubing	12 lb	R2422G2S4	\$ 299	7/16"-20 taps in shaft ends	
4 bodies	4 section 2" smooth Steel light tubing (full shaft)	7 lb	R2422G2L4	\$ 299	7/16"-20 taps in shaft ends	
	2" grooved Urethane cast over heavy duty steel tubing	7.5 lb	R2422S2CG	\$ 229	3/8"-24 taps in shaft ends	
	2" smooth Urethane cast over heavy duty steel tubing	8 lb	R2422S2C	\$ 209	3/8"-24 taps in shaft ends	
	2" smooth Steel extra heavy duty tubing (1/4" wall)	11.5 lb	R2422S2S	\$ 159	3/8"-24 taps in shaft ends	1000770
	2" smooth Steel light tubing (full shaft)	5.5 lb	R2422S2L	\$ 119	3/8"-24 taps in shaft ends	1004990
	2" grooved Urethane cast over heavy duty steel tubing	7.5 lb	R2422G2CG	\$ 229	7/16"-20 taps in shaft ends	
	2" smooth Urethane cast over heavy duty steel tubing	8 lb	R2422G2C	\$ 209	7/16"-20 taps in shaft ends	
	2" smooth Steel extra heavy duty tubing (1/4" wall)	11.5 lb	R2422G2S	\$ 159	7/16"-20 taps in shaft ends	
	2" smooth Steel light tubing (full shaft)	5.5 lb	R2422G2L	\$ 119	7/16"-20 taps in shaft ends	
	2" smooth Urethane cast over heavy duty steel **PRO line	12 lb	225C	\$ 229	7/16"-20 taps in shaft ends	
	2" smooth Steel machined heavy bar **PRO line	19 lb	225SB	\$ 199	7/16"-20 taps in shaft ends	
	2" smooth Steel light tubing **PRO line	4 lb	225SL	\$ 119	7/16"-20 taps in shaft ends	

RANSOMES MOTOR 180D, 180 TRIPLEX & TRIPLE 18 - ALL ROLLERS

	2.5" grooved Urethane cast over heavy duty steel tubing	9 lb	R2826G25CG	\$ 259	7/16"-20 taps in shaft ends	
	2.5" smooth Urethane cast over heavy duty steel tubing	12 lb	R2826G25C	\$ 229	7/16"-20 taps in shaft ends	
	2.5" smooth Steel heavy duty tubing (1/8" wall)	12 lb	R2826G25S	\$ 189	7/16"-20 taps in shaft ends	

RANSOMES 250 LIGHTWEIGHT FAIRWAY - 33 HP/ 6" DIA. REELS - ALL ROLLERS

	3" grooved Urethane cast over heavy duty steel tubing	13 lb	R2722R3CG	\$ 299		
	3" smooth Urethane cast over heavy duty steel tubing	15 lb	R2722R3C	\$ 259		
	3" smooth Steel heavy duty tubing	15 lb	R2722R3S	\$ 219		

RANSOMES 250 LIGHTWEIGHT FAIRWAY - 28 HP/ 2WD REELS - FRONT ROLLERS

	3" grooved Urethane cast over heavy duty steel tubing	13 lb	R2622A3CG	\$ 299		
	3" smooth Urethane cast over heavy duty steel tubing	15 lb	R2622A3C	\$ 259		
	3" smooth Steel heavy duty tubing	15 lb	R2622A3S	\$ 219		

RANSOMES 250 LIGHTWEIGHT FAIRWAY - 23 HP/ 5" DIA. REELS - FRONT ROLLERS

	3" grooved Urethane cast over heavy duty steel tubing	13 lb	R2722A3CG	\$ 299		
	3" smooth Urethane cast over heavy duty steel tubing	15 lb	R2722A3C	\$ 259		
	3" smooth Steel heavy duty tubing	15 lb	R2722A3S	\$ 219		

RANSOMES 250 LIGHTWEIGHT FAIRWAY - 23 HP/ 5" DIA. REELS - REAR ROLLERS

	2.5" grooved Urethane cast over heavy duty steel tubing	9 lb	R2421S25CG	\$ 259	3/8"-24 taps in shaft ends	
	2.5" smooth Urethane cast over heavy duty steel tubing	9.5 lb	R2421S25C	\$ 229	3/8"-24 taps in shaft ends	
	2.5" smooth Steel extra heavy duty tubing (1/4" wall)	10 lb	R2421S25S	\$ 189	3/8"-24 taps in shaft ends	
	2.5" grooved Urethane cast over heavy duty steel tubing	9 lb	R2421G25CG	\$ 259	7/16"-20 taps in shaft ends	
	2.5" smooth Urethane cast over heavy duty steel tubing	8 lb	R2421G25C	\$ 229	7/16"-20 taps in shaft ends	
	2.5" smooth Steel extra heavy duty tubing (1/4" wall)	12 lb	R2421G25S	\$ 189	7/16"-20 taps in shaft ends	

RANSOMES 26" FAIRWAY 300, 305, 405 & 26" T-PLEX 185D - ALL ROLLERS

	3" grooved Urethane cast over heavy duty steel tubing	13 lb	R3026T3CG	\$ 299		
	3" smooth Urethane cast over heavy duty steel tubing	15 lb	R3026T3C	\$ 259		
	3" smooth Steel heavy duty tubing	15 lb	R3026T3S	\$ 219		

RANSOMES 30" T-PLEX 185D - ALL ROLLERS

	3" grooved Urethane cast over heavy duty steel tubing	13 lb	R3429T3CG	\$ 299		
	3" smooth Urethane cast over heavy duty steel tubing	15 lb	R3429T3C	\$ 259		
	3" smooth Steel heavy duty tubing	15 lb	R3429T3S	\$ 219		

RANSOMES 350D, 213D, 465, 5/3 MOTOR, 5 MOUNTED, 5/7 & 340 (27" REEL) - ALL ROLLERS

	2.5" grooved Urethane cast over heavy duty steel tubing	9 lb	R3127C25CG	\$ 259	31.62" shaft	
	2.5" smooth Urethane cast over heavy duty steel tubing	11.5 lb	R3127C25C	\$ 229	31.62" shaft	
	2.5" smooth Steel extra heavy duty tubing (1/4" wall)	12 lb	R3127C25S	\$ 189	31.62" shaft	
	3" grooved Urethane cast over heavy duty steel tubing	13 lb	R3529F3CG	\$ 299		
	3" smooth Urethane cast over heavy duty steel tubing	15 lb	R3529F3C	\$ 259		
	3" smooth Steel heavy duty tubing	15 lb	R3529F3S	\$ 219		

RANSOMES ROTARY AR-250, AR-2500 DECK - REAR

	3.5" smooth Urethane cast over heavy duty steel tubing	27 lb	R2722X7C	\$ 359		4115430, 2206195
	4" smooth Urethane cast over heavy duty steel tubing	23 lb	R2722X4C	\$ 399		4115430, 2206195
	4" smooth Steel heavy duty tubing (1/8" wall)	27 lb	R2722X4S	\$ 359		4115430, 2206195

Tru-Turf Greens Golf Rollers

Tru-Turf Smoothing Heads Rollers for RS48-11E, RB48-11A & TR7000C machines

2.5" smooth Urethane cast over heavy duty steel tubing 22.45"	9.5 lb	T2222S25C	\$ 209	22.45" body to fit RS48-11E & RB48-11A	R8217
2.5" smooth Steel heavy duty tubing (1/8" wall) 22.25"	9.2 lb	T2222S25S	\$ 189	22.25" body to fit RS48-11E & RB48-11A	R8217
2.5" smooth Urethane cast over heavy duty steel tubing 39.5"		T3939S25C	\$ 370	39.5" body to fit GR39	
2.5" smooth Steel heavy duty tubing (1/8" wall) 39.5"		T3939S25S	\$ 330	39.5" body to fit GR39	
2.5" smooth Urethane cast over heavy duty steel 39.5" 2 bodies		T3939S25C2	\$ 395	39.5" body total to fit TR7000C machine	G7018 & G7049
2.5" smooth Steel heavy duty tubing (1/8" wall) 39.5" 2 body sectio	15.5 lb	T3939S25S2	\$ 349	39.5" body total to fit TR7000C machine	G7018 & G7049

Tru-Turf Smoothing Heads Rollers for R52 machines

2.5" smooth Urethane cast over heavy duty steel tubing 18.45"	9.5 lb	T1818S25C	\$ 219	18.45" body to fit R52	E7149
2.5" smooth Steel heavy duty tubing (1/8" wall) 18.25"	9.2 lb	T1818S25S	\$ 199	18.25" body to fit R52	E7149

Hustler 7500 & 7700 Fairway & Shibaura SR525 Fairway

(Sectional rollers with 4 bodies also available)

3" grooved Urethane cast over heavy duty steel tubing	9.5 lb	S2521P3CG	\$ 359		A72010351
3" smooth Urethane cast over heavy duty steel tubing	11.5 lb	S2521P3C	\$ 339		A72010351
3" smooth Steel heavy duty tubing (1/8" wall)	11.2 lb	S2521P3S	\$ 279		A72010351

Ventrac Mowers

Ventrac MJ840 Contour Deck Rotary Mower

3" smooth Urethane cast over heavy duty steel tubing	11.8 lb	V2422S3C	\$ 399	only available through Venture Products	Competition2 upgrade
3" smooth Steel heavy duty tubing (1/8" wall)	11.4 lb	V2422S3S	\$ 279		

Ventrac MR740 Triplex Reel Mower

3" grooved Urethane cast over heavy duty steel tubing	9.5 lb	V2826G3CG	\$ 339		
3" smooth Urethane cast over heavy duty steel tubing	11.5 lb	V2826G3C	\$ 309		
3" smooth Steel heavy duty tubing (1/8" wall)	11.2 lb	V2826G3S	\$ 279		

NATIONAL

National 68 & 84 TRIPLEX & PTO GANG - 30" REELS

3" grooved Urethane cast over heavy duty steel tubing	13 lb	N3429I3CG	\$ 299		
3" smooth Urethane cast over heavy duty steel tubing	15 lb	N3429I3C	\$ 259		
3" smooth Steel heavy duty tubing	15 lb	N3429I3S	\$ 219		
3.5" smooth Urethane cast over heavy duty steel tubing	18 lb	N3429I7C	\$ 339		
4" smooth Urethane cast over heavy duty steel tubing	23 lb	N3229I4C	\$ 379		
4" smooth Steel heavy duty tubing	19 lb	N3429I4S	\$ 339		

National 68 & 84 TRIPLEX & PTO GANG - 25" OUTSIDE REELS

3" smooth Urethane cast over heavy duty steel tubing	11 lb	N2420I3C	\$ 259		
3" smooth Steel heavy duty tubing	11 lb	N2420I3S	\$ 229		
3.5" smooth Urethane cast over heavy duty steel tubing	13 lb	N2420I7C	\$ 339		




KESMAC

Kesmac GANG MOWER - ALL ROLLERS

3" grooved Urethane cast over heavy duty steel tubing	13 lb	K3127I3CG	\$ 329		
3" smooth Urethane cast over heavy duty steel tubing	15 lb	K3127I3C	\$ 259		
3" smooth Steel heavy duty tubing	15 lb	K3127I3S	\$ 219		
3.5" smooth Urethane cast over heavy duty steel tubing	18 lb	K3127I7C	\$ 339		
4" smooth Urethane cast over heavy duty steel tubing	23 lb	N3127I4C	\$ 379		

GOLFCO INTERNATIONAL COMPETITION ROLLERS™ 2018

Competition Roller™ Upgrade Options

	<u>Retail</u>	<u>Part #</u>	
Upgrade to Stainless Steel Bearings on any Competition Roller™	\$ 20	BU-COMPSS	
Upgrade to Double Row Stainless Bearings as our Competition2 Rollers™ upgrade select Competition Rollers™ to double row stainless bearings (5203 style) available for most rollers larger than 2" diameter (requires special bearing housings)	\$ 60	(designate by adding "2" to front of roller part number)	
Add Grease Fittings (set of 2 special flush mount grease fittings) can be added to the yellow end seal of any Competition Roller™ at any time	\$ 13	GFFD316SET	
Bearing Installation Tool Set set of 2 tools - aids in installing bearings into roller housing and onto shaft	\$ 60	2TOOLSET	
Super Duty solid one piece Polyurethane Soft Blow Mallet Everyone that has tried this mallet: "Thank you!!"	\$ 50	#MALLET1	

Competition Roller™ Overhaul Kits - *ORIGINAL STYLE*



Hardened Alloy Steel Bearing Overhaul Kits (with 2 bearings, 6 seals, 2 stainless washers & 4 retainers)	\$ 50	OHCOMP
Stainless Steel Bearing Overhaul Kits (with 2 stainless bearings, 6 seals, 2 stainless washers & 4 retainers)	\$ 70	OHCOMPSS
Stainless Steel Bearings (for upgraded rollers with 4 bearings) (with 4 stainless bearings, 6 seals, 2 stainless washers & 4 retainers)	\$ 110	OHCOMP4BSS

For Multiple Body Rollers - call for overhaul kits

Competition2 Roller™ Overhaul Kits *SERIES 2* with Double-Row Bearings

Double-Row Stainless Bearing Kit (5203-40mm OD) (with 2 stainless bearings, 6 seals, 2 stainless washers & 4 retainers)	\$ 90	OHCOMP2SS
---	-------	-----------

{ Only Golfer bearings are filled to 90%+ with a special high performance extreme pressure rated grease that has been time tested to maximize the life of the bearing for commercial mower applications.

Competition Roller™ Shafts

ALL SHAFTS NOW OFFERED AS ASSEMBLIES WITH OVERHAUL KITS

(call for part numbers)

SHAFT ASSEMBLY WITH OHCOMP OVERHAUL KIT	\$ 100
SHAFT ASSEMBLY WITH OHCOMPSS OVERHAUL KIT	\$ 120
SHAFT ASSEMBLY WITH OHCOMP2SS OVERHAUL KIT	\$ 140
SHAFT ASSEMBLY FOR MULTIPLE BODY ROLLERS - CALL FOR SPECIFICS	

(The shaft part number is taken from the roller part number as follows: Roller T2522S2CG has shaft part SHA2522ST)

(For assemblies with STAINLESS STEEL bearings add "S" to the shaft part number.)

Pro Roller™ Bearings (Water Pump Style)

Replaces Toro #21-8430 Water pump bearing-sealed (shaft is 1.8")	\$ 18	BWP3
Replaces Toro #52-3180 & 52-3210 Water pump bearing-sealed (shaft is 1.8" with 3/8-24 tap)	\$ 18	BWP4
Replaces Jacobsen #101482 Water pump bearing-sealed (shaft is 1.0" with 7/16-20 tap)	\$ 18	BWP5
Replaces Toro #75-1290, Jacobsen #101481 & John Deere #35741 Water pump bearing-sealed (shaft is 1.5")	\$ 18	BWP7

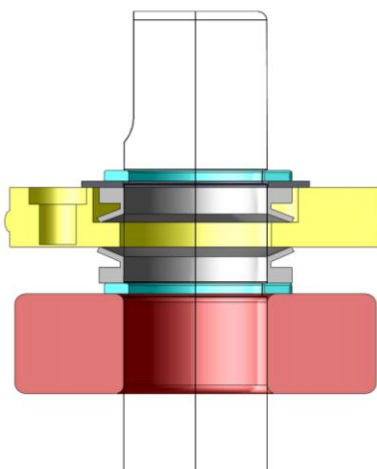
GOLFCO INTERNATIONAL COMPETITION ROLLERS™ 2018 REBUILD INSTRUCTIONS

(For Overhaul Kits OHCOMP & OHCOMPSS)

All Competition Rollers™ are assembled with components in each roller end as follows:

Part / Description

- 2RET62SR Retainer Snap Ring (exterior) >>>>>>>>>
- 2WS99.63.03 Washer (Stainless) >>>>>>>>>>>>>>
- 2SEAL62V Seal Shaft V – outer (black rubber) >>>>>>
- 2SEAL16CU Housing Seal (yellow polyurethane) >>>>
- 2SEAL62V Seal Shaft V – inner (black rubber) >>>>>>
- 2RET62SR Retainer Snap Ring (exterior) >>>>>>>>>
- 2BCOMP Sealed Bearing (hardened) >>>>>>>>>>>>
- (option) 2BCOMPSS Sealed Bearing (stainless) >>>>>>



REMOVAL OF USED COMPONENTS:

(Work on one end only “end A” for steps 1-6)

1. Remove the outer snap ring retainer.
2. Remove the steel washer (slides off end of shaft).
3. Remove the outer V seal (on shaft in counter-bore of collar seal).
4. Remove the yellow collar seal from the roller end housing (can be pried off).
5. Remove the inner V seal (located behind the collar seal).
6. Remove the snap ring retainer which is next to the bearing inner race. Use snap ring pliers.
7. Remove the shaft by pushing it through end “A” of the roller and out of end “B” (we use a soft hammer). Be careful to avoid damage or injury as the shaft leaves the roller body.
8. Remove all of the bearing, seal and retainer components from end “B” of the shaft.
9. Use the shaft to push the 2nd bearing out of end “A” of the roller body bearing housing.



REBUILDING ROLLER WITH NEW COMPONENTS:

(Overhaul kit # OHCOMP or OHCOMPSS contains 2 each of the components listed above)

1. Insert the shaft into the roller body.
2. Place new bearings onto the shaft ends.
3. Install the bearings into the bottom of the roller body bearing housings using Golfco bearing assembly tools (2TOOLSET40) or large sockets. The inner shoulders of the shaft will help to position the shaft roughly in the roller body but it will not be centered. The shaft has two grooves near each end. You should be able to see both grooves of one end of the shaft (shaft end “A”).
4. Install one snap ring retainer into the inner groove of the shaft end that is visible (shaft end “A”).
5. Carefully shift the shaft toward end “B” of the roller body until the installed inner retainer is seated against the bearing race (on end “A”). Do not force the shaft too far or the snap ring retainer will deform. Keep the bearings seated against the bottom of the roller body housing by using the bearing assembly tools. You should be able to see both retainer grooves on end “B” of the shaft.
6. Install the second snap ring retainer into the inner groove of the shaft at end “B”.
7. Test that the shaft spins easily within the roller body. If not, lightly tap the shaft ends to reseal the bearings.
8. Push one of the V seals onto the shaft against the snap ring retainer with the thin flexible lip section facing outward in relation to the roller body. Repeat for the other end of the roller.
9. Optionally add a small amount of your favorite industrial grease (not erotic) into both bearing housings next to the bearings without filling into the V seal.
10. Install the yellow housing seal into the bearing housing counter-bore of the roller body with its side hole facing outward. The housing seal should fit snugly into the bearing housing counter-bore and be parallel to the roller body end.
11. Push the second V seal onto the shaft end with the thin flexible lip section facing inward. With careful motion, push the V seal down the shaft to the counter-bore of the yellow housing seal until the V seal outer face is flush with the outer face of the collar seal. The V seal inner lips should be flared laterally and ride against the face of the collar seal. Do not try to install the V seal between the shaft and the inside diameter surface of the housing seal.
12. Install the steel washer and the exterior snap ring retainer. The steel washer should be loose fitting.