



**GRACELAND**  
**PORTABLE BUILDINGS®**

*"Look for the G"*

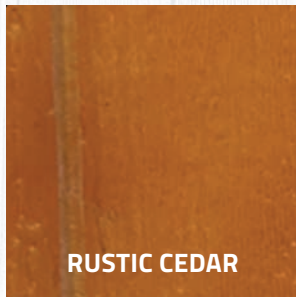
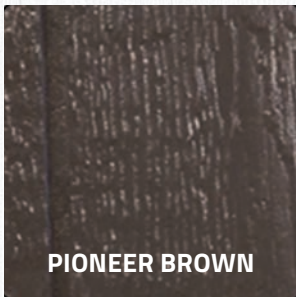
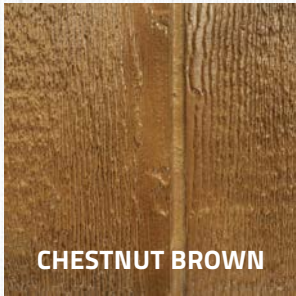


**888-GRACE-04**  
[gracelandportablebuildings.com](http://gracelandportablebuildings.com)

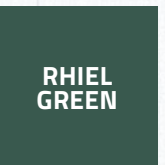
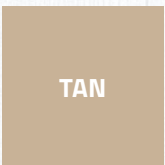
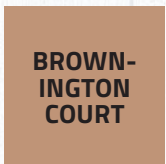


# CUSTOMIZE YOUR BUILDING

## URETHANE FINISHES



## PAINT COLORS



## CUSTOM DESIGN

Among the many urethane finishes and paint color options, Graceland Portable Buildings® can build to order! Pick the style and size that best fits your needs, add a window, pick the position of the entry door, include window shutters, upgrade your porch, and more! Simply contact your Graceland representative for details - let's get started today!



Colors shown are only intended as a guide and may vary from actual color on product; check actual building samples before making final selection. Available color options vary by location, speak to your local Graceland Portable Buildings® dealer for more information.



# BARN



## FEATURED BUILDING:

8' x 12' Barn

Rustic Cedar Urethane Finish

Navajo White Painted Trim

Green Metal Roof

8'

8X12

10'

10X12

10X16

12'

12X12

12X16

12X20

12X24

12x28

14'

14x16

14x20

14x24

14x28



Galvanized hurricane clips assure a safe and secure connection from trusses to walls.

Building measurements are approximate and are measured from eave to eave when 12' wide or greater. Sizes vary by location. Colors shown are only intended as a guide and may vary from actual color on building; check actual building samples before making final selection. Some features shown are upgrades to our standard features. Please speak to your local Graceland Portable Buildings® dealer for more information.



# LOFTED BARN



**FEATURED BUILDING:**  
 10' x 16' Lofted Barn  
 Pioneer Scarlet Finish  
 White Painted Trim  
 Galvalume Metal Roof

8'
8X12
8x16
8x20
10'
10X12
10X16
10x20
10x24
12'
12X12
12X16
12X20
12X24
12X28
12X32
12X36
12X40
14'
14X16
14X20
14X24
14x28
14x36
14x40



The featured loft area allows for maximum storage space while keeping the floor space open.

Building measurements are approximate and are measured from eave to eave when 12' wide or greater. Sizes vary by location. Colors shown are only intended as a guide and may vary from actual color on building; check actual building samples before making final selection. Some features shown are upgrades to our standard features. Please speak to your local Graceland Portable Buildings® dealer for more information.



# SIDE LOFTED BARN



**FEATURED BUILDING:**  
10' x 16' Side Lofted Barn  
Redwood Urethane Finish  
Navajo White Painted Trim  
Clay Metal Roof



When the "G" is placed on our building, it is recognized across the country as a symbol of quality craftsmanship and design.

8'

8X12

8x16

8x20

10'

10X12

10X16

10x20

10x24

12'

12X12

12X16

12X20

12X24

12X28

12X32

12X36

12X40

14'

14X16

14X20

14X24

14x28

14x36

14x40

Building measurements are approximate and are measured from eave to eave when 12' wide or greater. Sizes vary by location. Colors shown are only intended as a guide and may vary from actual color on building; check actual building samples before making final selection. Some features shown are upgrades to our standard features. Please speak to your local Graceland Portable Buildings® dealer for more information.



# CABIN

## FEATURED BUILDING:

12' x 24' Cabin  
Mahogany Urethane Finish  
Tan Painted Trim  
Mocha Tan Metal Roof



Our exclusive "G" Board radiant barrier option is designed to reflect up to 97% of the sun's radiant heat - keeping it from being absorbed into the attic of your building.

8'

8X12

8X16

10'

10X20

10X24

12'

12X20

12X24

12X28

12X32

12X36

12X40

14'

14X16

14X20

14X24

14X28

14x32

14x40

16'

16x20

16x24

16x28

16x32

Building measurements are approximate and are measured from eave to eave when 12' wide or greater. Sizes vary by location. Colors shown are only intended as a guide and may vary from actual color on building; check actual building samples before making final selection. Some features shown are upgrades to our standard features. Please speak to your local Graceland Portable Buildings® dealer for more information.



# SIDE PORCH CABIN

14'

14X20

14X24

14x28

16'

16x16

16x24



## FEATURED BUILDING:

16' x 24' Side Porch Cabin  
Pioneer Brown Urethane Finish  
Stolfus Tan Painted Trim  
Galvalume Metal Roof



Our Side Porch Cabin includes a full porch running the length of the building with plenty of interior space for storage.

Building measurements are approximate and are measured from eave to eave when 12' wide or greater. Sizes vary by location. Colors shown are only intended as a guide and may vary from actual color on building; check actual building samples before making final selection. Some features shown are upgrades to our standard features. Please speak to your local Graceland Portable Buildings® dealer for more information.



# CORNER PORCH CABIN



**FEATURED BUILDING:**  
 12' x 32' Corner Porch Cabin  
 Driftwood Urethane Finish  
 White Painted Trim  
 Galvalume Metal Roof

12'

12X20

12X24

12X28

12X32

12X36

12X40

14'

14X16

14X20

14X24

14X28

14x32

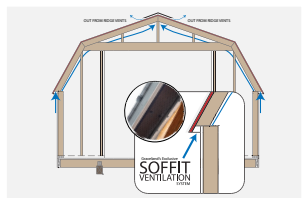
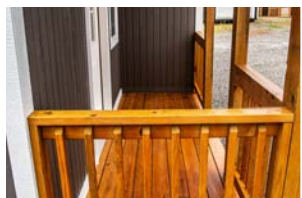
14x40

16'

16x24

16x28

16x32



Secure hand rails help accentuate our buildings for safety and aesthetics. Hand rails are an available option on some other building styles.

Building measurements are approximate and are measured from eave to eave when 12' wide or greater. Sizes vary by location. Colors shown are only intended as a guide and may vary from actual color on building; check actual building samples before making final selection. Some features shown are upgrades to our standard features. Please speak to your local Graceland Portable Buildings® dealer for more information.



# CORNER PORCH LOFTED BARN CABIN



12'

12X20

12X24

12X28

12X32

12X36

12X40

14'

14X24

14X28

14x32

14x36

14x40

## **FEATURED BUILDING:**

12' x 24' Corner Porch Lofted Barn Cabin  
Chestnut Brown Urethane Finish  
White Painted Trim  
Green Metal Roof



If you don't have room for additional square footage on your property, you can always move upward with loft storage space.

Building measurements are approximate and are measured from eave to eave when 12' wide or greater. Sizes vary by location. Colors shown are only intended as a guide and may vary from actual color on building; check actual building samples before making final selection. Some features shown are upgrades to our standard features. Please speak to your local Graceland Portable Buildings® dealer for more information.



# LOFTED BARN CABIN

## FEATURED BUILDING:

12' x 24' Lofted Barn Cabin  
Pioneer Brown Urethane Finish  
White Painted Trim  
Galvalume Metal Roof



Functional and pleasing to the eye with both a porch area and lofts, this building is attractive and practical!

10'

10X16

10X20

10X24

12'

12X20

12X24

12X28

12X32

12X36

12X40

14'

14X24

14X28

14x32

14x36

14x40

Building measurements are approximate and are measured from eave to eave when 12' wide or greater. Sizes vary by location. Colors shown are only intended as a guide and may vary from actual color on building; check actual building samples before making final selection. Some features shown are upgrades to our standard features. Please speak to your local Graceland Portable Buildings® dealer for more information.



# WRAPAROUND PORCH LOFTED BARN CABIN



## FEATURED BUILDING:

12' x 32' Wraparound Porch Lofted Barn Cabin  
Mahogany Urethane Finish  
White Painted Trim  
Tan Metal Roof



12'

12X24

12X28

12X32

12X36

12X40

14'

14X28

14x32

14x36

14x40



Our dynamic porch area is the perfect protection from the elements when stepping outside.

Building measurements are approximate and are measured from eave to eave when 12' wide or greater. Sizes vary by location. Colors shown are only intended as a guide and may vary from actual color on building; check actual building samples before making final selection. Some features shown are upgrades to our standard features. Please speak to your local Graceland Portable Buildings® dealer for more information.



# GARDEN SHED



**FEATURED BUILDING:**  
10' x 16' Garden Shed  
Chestnut Brown Urethane Finish  
White Painted Trim  
Galvalume Metal Roof



This classic look is perfect for any backyard. The double wooden entry doors make moving in your garden supplies, lawnmowers, or tools easy!

8'

8X12

8X16

8X20

10'

10X12

10X16

10X20

10X24

12'

12X12

12X16

12X20

12X24

12X28

12X32

12X36

12X40

14'

14X16

14X20

14X24

14X28

14x32

14x36

14x40

16'

16x20

16x24

16x28

16x32

Building measurements are approximate and are measured from eave to eave when 12' wide or greater. Sizes vary by location. Colors shown are only intended as a guide and may vary from actual color on building; check actual building samples before making final selection. Some features shown are upgrades to our standard features. Please speak to your local Graceland Portable Buildings® dealer for more information.



# UTILITY SHED



## FEATURED BUILDING:

10' x 16' Utility Shed  
 Pioneer Brown Urethane Finish  
 White Painted Trim  
 Blue Metal Roof



Organize and declutter your home  
 with this storage solution!

8'

8X12

8X16

8X20

10'

10X12

10X16

10X20

10X24

12'

12X12

12X16

12X20

12X24

12X28

12X32

12X36

12X40

14'

14X16

14X20

14X24

14X28

14x32

14x36

14x40

16'

16x20

16x24

16x28

16x32

Building measurements are approximate and are measured from eave to eave when 12' wide or greater. Sizes vary by location. Colors shown are only intended as a guide and may vary from actual color on building; check actual building samples before making final selection. Some features shown are upgrades to our standard features. Please speak to your local Graceland Portable Buildings® dealer for more information.



# PORTABLE GARAGE



**FEATURED BUILDING:**  
12' x 32' Portable Garage  
Pioneer Ebony Urethane Finish  
White Painted Trim  
Brown Metal Roof



10'

10X20

10X24

12'

12X20

12X24

12X28

12X32

12X36

12X40

14'

14X24

14X28

14x32

14x36

14x40

16'

16x24

16x28

16x32



Store your lawnmower, bicycle, or other larger items in our Portable Garage!

Building measurements are approximate and are measured from eave to eave when 12' wide or greater. Sizes vary by location. Colors shown are only intended as a guide and may vary from actual color on building; check actual building samples before making final selection. Some features shown are upgrades to our standard features. Please speak to your local Graceland Portable Buildings® dealer for more information.



# LOFTED BARN GARAGE



## FEATURED BUILDING:

12' x 32' Lofted Barn Garage  
Scarlet Urethane Finish  
Zook Gray Painted Trim  
Galvalume Metal Roof

12'

12X20

12X24

12X28

12X32

12X36

14'

14X20

14X24

14X28

14X32

14X36



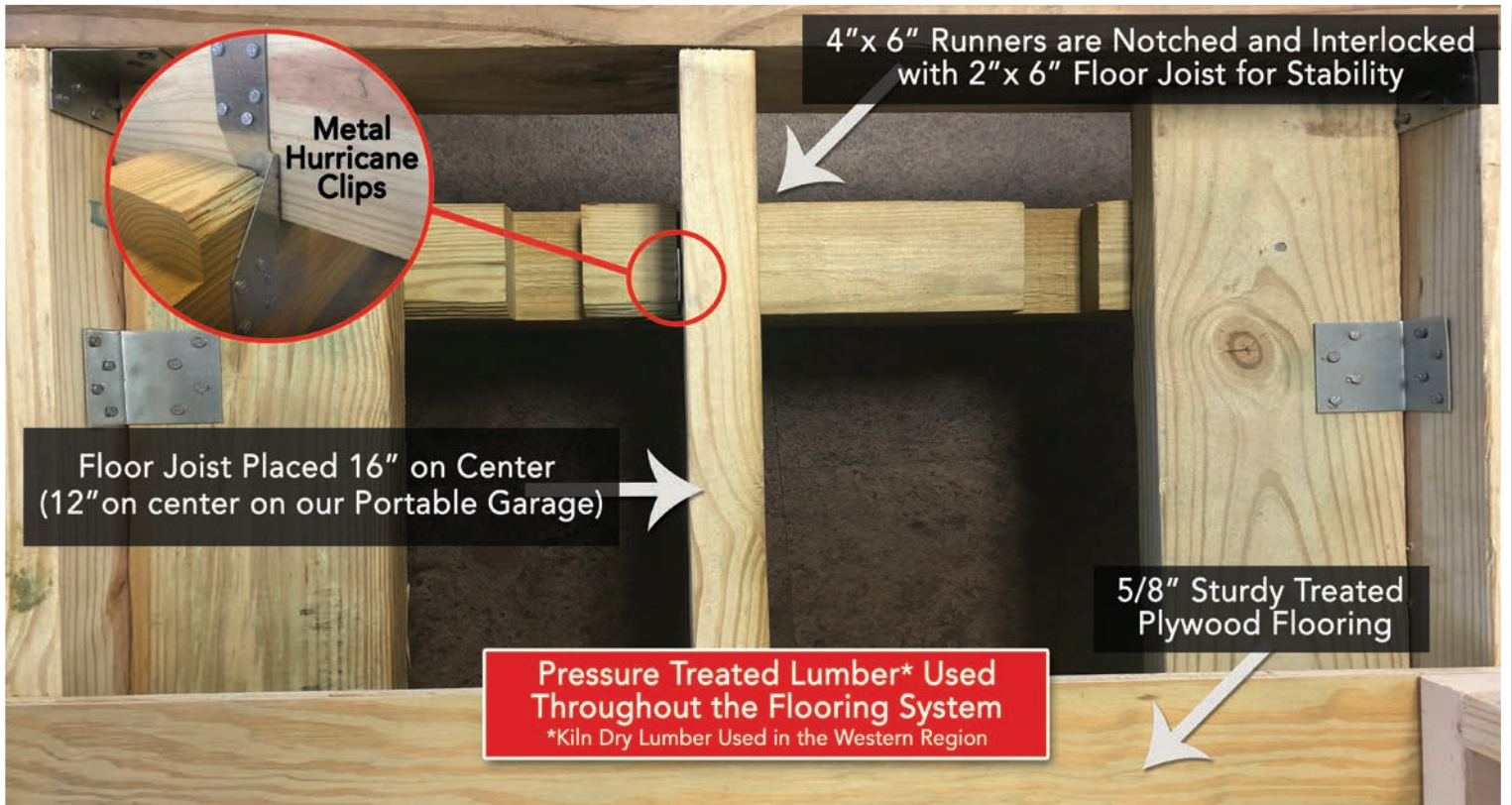
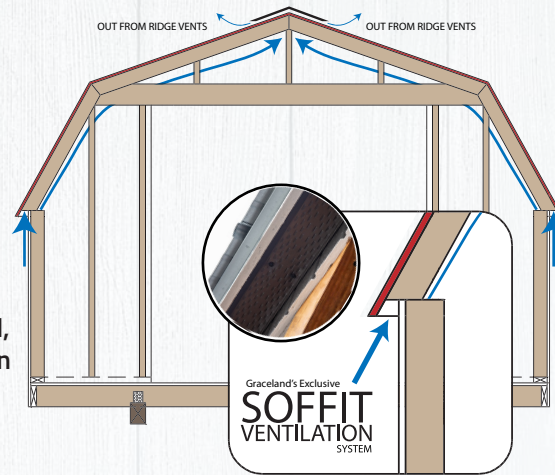
With a taller garage door opening and additional lofts, this garage is an upgrade to the original Portable Garage.

Building measurements are approximate and are measured from eave to eave when 12' wide or greater. Sizes vary by location. Colors shown are only intended as a guide and may vary from actual color on building; check actual building samples before making final selection. Some features shown are upgrades to our standard features. Please speak to your local Graceland Portable Buildings® dealer for more information.



# STANDARD FEATURES

- Graceland Exclusive Aluminum Soffit Vent System
- Ridge Vents
- 5/8" Quality Floor System
- Treated 4 x 6 Notched Runners
- Treated 2 x 6 Floor Joists
- Duratemp Siding on Urethane & Painted Buildings
- 2 x 4 Reinforced Doors
- Galvanized Ring Shank Nails
- 93 1/2" Walls on Utility, Garden Shed, Garage, and Cabin (except Lofted Barn Cabin and Wraparound Porch Lofted Barn Cabin).





# OPTIONS

## AVAILABLE OPTIONS

- 24"x 27" Loft Window (Single pane window only)
- 24"x 36" Window (Double pane window available)
- 36"x 36" Window (Double pane window available)
- Fiberglass Door (9-Lite or Solid)
- 6, 8 and 9 foot Garage Doors available
- 48" Single Wood Door
- 72" Double Wood Doors
- Handrails for Standard Front Porch Cabins
- "G" Board Radiant Barrier
- Flower Boxes (Various Colors)
- Window Shutters (Various Colors)
- Urethane Finish
- Paint Finish
- Upgrade to a 6' Deep Porch (on select Cabins)

(Inquire with dealer for more details)

## WIDE VARIETY OF ROOF COLORS TO CHOOSE FROM

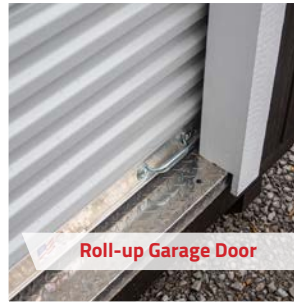
(Visit your local dealer for color options in your area)

- 25-year manufacturer's warranty on metal roof products
- Supreme quality 25-year fiberglass asphalt shingle option also available

Additional options available on  
[GracelandGear.com](http://GracelandGear.com)



Flower Boxes



Roll-up Garage Door



Window Shutters



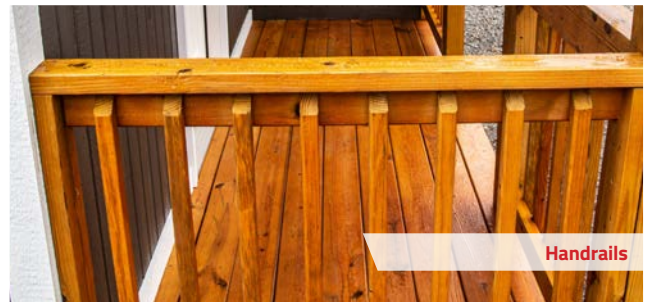
Fiberglass Door



Radiant Barrier



24" x 36" or 36" x 36" Window



Handrails



# 10 REASONS

## WHY YOU SHOULD CHOOSE A GRACELAND PORTABLE BUILDING®

- [1] **Graceland** uses only the finest building materials. Our building's craftsmanship is well-established with authentic Mennonite methods.
- [2] **Graceland** uses 2x6 floor joists rather than 2x4 and makes the building more DURABLE and STRONG. This wood is treated to resist termites and decay.
- [3] **Graceland's** walls, floors and 4x6 runners are all constructed of top quality lumber and the nails are hot dipped galvanized ring shank. They hold like screws and will not rust.
- [4] **Graceland's** walls and floors are 5/8" thick. Compare to our competition at 7/16" or 1/2".
- [5] **Graceland's** metal roofs are fastened to wood decking and screwed down solid, not on 1x4 wood slats. This makes the roof much more durable.
- [6] **Graceland's** metal roof comes with a continuous ridge vent, designed with a screen to keep out pests (bugs, bees, etc.).
- [7] **Graceland** buildings also come with our patented "Continuous Soffit" vent under each eave. This is a "Graceland Exclusive". This keeps our buildings 10-15 degrees cooler in the summer.
- [8] **Graceland** buildings are designed to meet or exceed IBC (International Building Code) regulations for portable storage buildings.
- [9] **Graceland** buildings have the strongest warranties in the business. All shingle and metal roof products have a 25 Year Manufacturer's Warranty. All treated wood products have a Limited Lifetime Manufacturer's Warranty, and Graceland offers a 7 year warranty on workmanship.
- [10] **Graceland** also offers the best **RENT-TO OWN / LEASE-TO-OWN** program in the business. **"NO CREDIT CHECK"**. **FREE DELIVERY & SETUP** - Call dealer for details.



ACCREDITED  
BUSINESS

**A+ RATING**



# WHAT SETS US APART FROM OUR COMPETITION?

## "G" Board Radiant Barrier

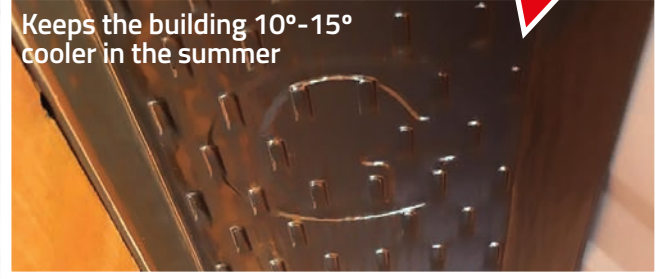
(Available Option)



Roof sheathing designed to reflect up to 97% of the sun's radiant heat - keeping it from being absorbed into the attic of your building. That means you can maintain indoor comfort while lowering peak attic

temperatures up to 30°F. This high-quality roof sheathing combined with \*Graceland's Patented "Soffit Ventilation System" creates the "coolest" buildings in the market!

## Graceland's Exclusive Patented Soffit Ventilation System\*



Keeps the building 10°-15° cooler in the summer

For optimal ventilation. Reduces temperature and moisture in building during hot summer.



With



Without

Actual results from an infrared thermometer

- ✓ **QUALITY MATERIAL**
- ✓ **QUALITY CONSTRUCTION**
- ✓ **QUALITY CRAFTSMANSHIP**

- **Seven-Year Graceland Warranty on Craftsmanship!**
- **Quality Standard:** We have a stringent multi-stage inspection process to ensure quality and customer satisfaction
- **Top Quality Material:** We utilize top quality materials on each and every building, no "material upgrades" necessary
- **Ventilation:** Graceland's Exclusive Patented Aluminum Soffit Vents extend the total length of the soffit on both sides of each of our portable buildings. This allows our buildings to be cooler and drier inside than any other product on the market.



# QUALITY STATEMENT

**Graceland Portable Buildings®** is committed to providing the highest quality product, the most enjoyable purchase experience, and service that exceeds our customer's expectations. Our product is built by highly skilled craftsmen using only the best materials available to provide a product with the greatest integrity.

**Graceland Portable Buildings®** are designed and built to meet the highest building standards and meet all required state and federal specifications. This includes ensuring that we meet or exceed any relevant industry-specific regulations or standards.

**Graceland** operates a Quality Management System (QMS) to ensure that we deliver consistent high quality. Our QMS is accredited; and a copy of the certifications {State Specific Architectural Drawings} are available upon request. Our Plant Managers and Quality Control Personnel will take responsibility for ensuring effective quality management on each building we construct.

It is our desire that the purchase of a **Graceland Portable Building®**, not only provides a place of cost effective and convenient storage, it also enhances the landscape and adds real value to your property for years to come.

When the "G" is placed on our building, it is recognized across the country as a symbol of quality craftsmanship and design. From our patented soffit-vent to our custom G-Board, Graceland Portable Buildings® set the standard for excellence.

To find Proven Quality, look for the "G"!

**Greg French,**  
*Chief Executive Officer*



# FREE DELIVERY & SETUP



**Up to 50 miles from your dealer**

Our delivery fleet operates with custom built tilt bed trailers and uses a portable hydraulic Mule to easily place the building in the most desired position with minimal damage to your lawn.

To ensure this, the following must be in place:

- Clear access to desired location (no fences, trees, power lines, etc.)
- Lot is no more than 30" out of level in the length of the building.
- Delivery within 50 miles of local dealer.
- Ground conditions must be suitable to support weight of the building and the moving and set-up equipment.

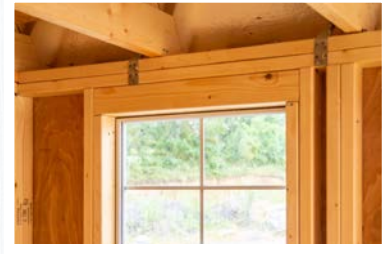
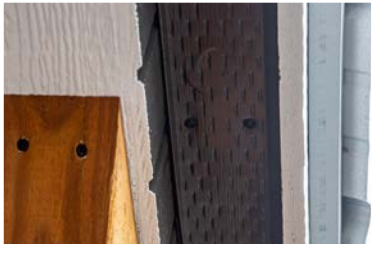
Graceland guarantees the building to be set up properly to ensure your total satisfaction.





# WHAT'S INSIDE?

- Patented Soffit Ventilation System - keeps our buildings 10-15 degrees cooler by allowing the air to circulate throughout the building.
- Galvanized Ring Shank Nails: Will hold like screws and will not rust
- 5/8" Duratemp Wood Siding with 50-Year Manufacturer's Warranty (no OSB!)
- 2x6 Reinforced Entry Doors
- 2x6 Floor Joists
- Superior Quality Lumber
- Screened Ridge Vents
- Treated 4x6 Notched Runners
- Hurricane Clips





# EASY PURCHASE OPTIONS



- No Credit Check, **YOU'RE APPROVED!**
- Pay off at any time with no prepayment penalty.
- When your last payment or your early payoff is made, you will own your building.
- No credit history qualifications.
- Store your items at home with 24/7 access, unlike storage units across town.
- Your building can be moved when you move, just call 888-GRACE-04.



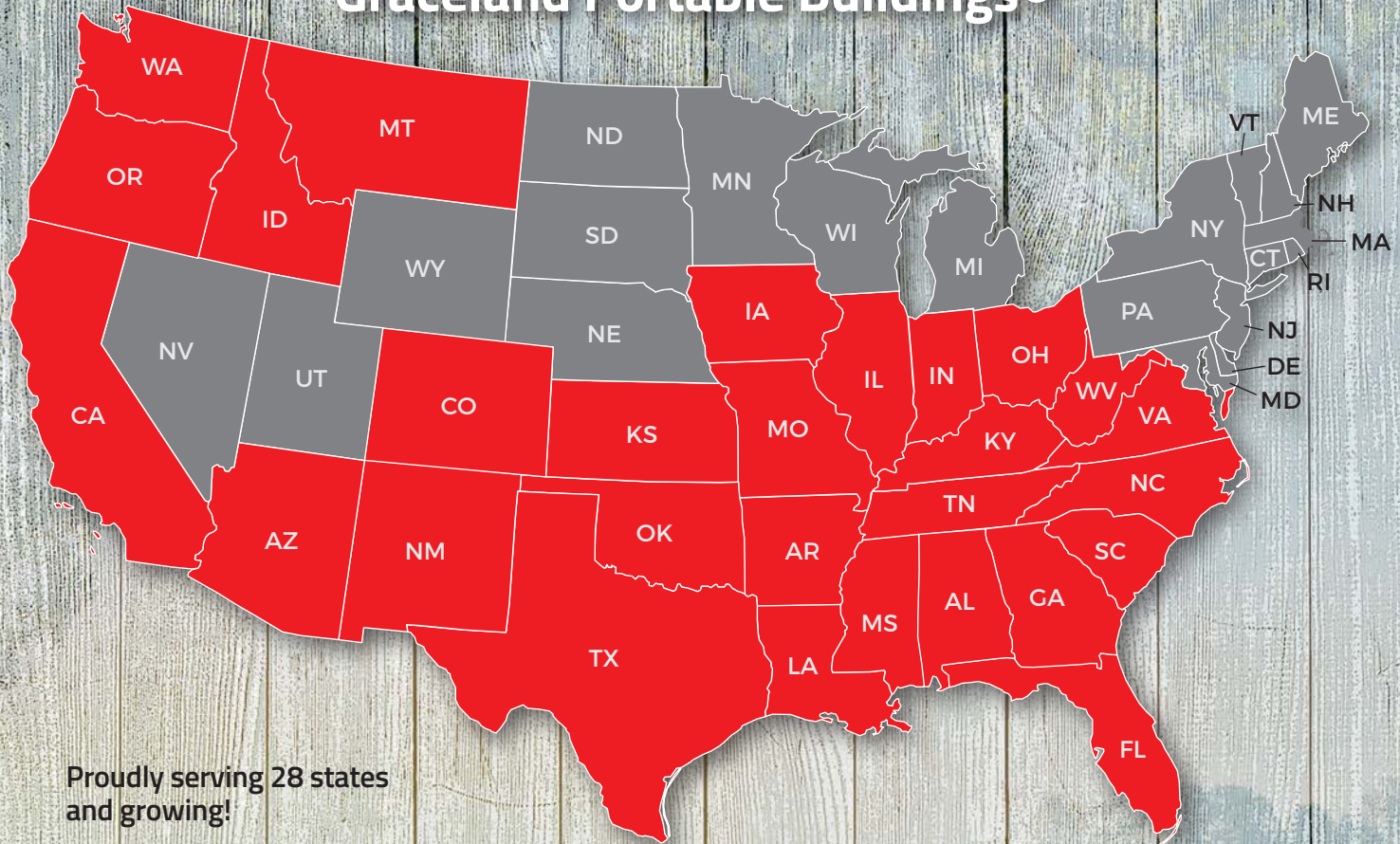
## RENT TO OWN / LEASE TO OWN

...is a great choice for many circumstances. You are not required to keep the unit. If your building becomes a financial burden or for any reason you no longer need the building, simply give us a call and we will promptly pick it up and your credit will remain safe and sound.





# Graceland Portable Buildings®



Proudly serving 28 states  
and growing!

**888-GRACE-04**  
**(888) 472-2304**  
[www.gracelandportablebuildings.com](http://www.gracelandportablebuildings.com)



[facebook.com/look4g](https://www.facebook.com/look4g)



[instagram.com/gracelandpb](https://www.instagram.com/gracelandpb)

## DEALER CONTACT