

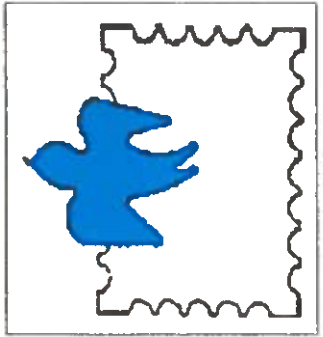
ROCKFORD STAMP NOTES

ROCKFORD STAMP CLUB

ESTABLISHED AUGUST 21, 1930 - APS CHAPTER #735
EDITOR: TIMOTHY G. WAIT EMAIL: T.WAIT@COMCAST.NET

August 2017

Volume 21 - Number 7



Monthly meetings at Ken-Rock Community Center, 3200 11th St., Rockford, IL

Wednesday, August 2, 2017

6:00 pm - Buy, sell and trade
View auction lots
7:00 pm - Meeting & auction

Tuesday, August 15, 2017

9:00 am - Buy, Sell and trade
View auction lots
9:30 am - Meeting & auction

1st Wednesday Update: At the Wednesday June 7th **Ted Gifford** gave an enlightening talk about collecting plate blocks and the Durland Plate Block Catalog. The auction then ensued. No Mystery Raffle Box but **Hank** said he will continue them at the August meeting.

We continue to enjoy the various **Show & Tell** items presented by our members. This can be anything you want to share OR you can present a **Show & Ask** item that you have questions about to see if fellow members can help. For those of you who haven't presented, consider trying it. You might get hooked!

3rd Tuesday Update: The Tuesday July 18th may have set a recent club record for auction income. There were 16 members and 121 lots in the auction. The club earned \$77 with \$9 from club lots and \$68 from other sellers.

One of our regulars, **Mel "Butch" Colombi**, fell off a roof and broke his ankle and smashed his right heel. Had surgery July 18th and is recovering in Rehab. We wish you a speedy recovery.

100 Years Ago—May 2, 1917



The final version of the Bicycle Messenger Special Delivery stamp, Scott #E11 was issued 100 years ago. There were five version of this stamp, originally issued in 1902. Re-issued in 1909 after The "Merry Widow" incident, Scott E7. Watermarked/unwatermarked and perf 12, 10 and finally perf 11. It was in service for 20 years when in 1922 the "modern" Motorcycle Messenger Special Delivery stamp, E12 replaced it.

Gordie Carlson Donation

Mary Carlson, Gordie's daughter has donated several cartons of material that were not of interest to stamp dealers. **Matt Mace** has started to go through the material and will be having Club Lots. "There is a little of everything. I have sorted one box and have \$120 in postage, a submarine booklet, and a couple of older USA higher values. These were buried in a lot of "stuff." Check these out starting at the August auction".

Stamp Show Volunteer Gifts

At the April meeting I handed out Rockford Stamp Club Key Chains to many of our show committee and volunteers. Unfortunately, I have not been to a meeting since due to work commitments in May and my fall in June.

I have the gifts and the names of some of you who weren't at the April meeting. See me at the August meeting, hopefully, as I will bring them with me.



Upcoming Area Stamp Shows

Sat-Sun Sep 9-10- MSDA West Suburban Show

Lombard, IL. Linder Conference Center, 610 E. Butterfield Rd. Hours Sat 10-5, Sun 10-3. 15 dealers, free admission.

Fri-Sun Sep 15-17 - MILCOPEX 2017

Milwaukee, WI. Milwaukee Philatelic Society. Crowne Plaza Milwaukee Airport, 6401 S. 13th St. Hours: Fri-Sat. 10-5, Sun. 10-3. Over 25 dealers, 125+ frames of exhibits, USPS. Free admission.

Join the fun, free rides to stamp shows available!

USPS 2017 New Issues

Disney Villains

One Ounce Forever Rate
July 15—Anaheim, CA

The U.S. Postal Service will celebrate the rich legacy of the Walt Disney Studio's Ink & Paint Department by dedicating a sheet of 20 Forever stamps featuring 10 classic Disney Villains. Postmaster General Megan J. Brennan will be joined by Disney officials in dedicating the stamps.

"The Postal Service is highlighting the Disney Villains and the pioneering spirit of the Ink and Paint Department that brought many of these characters to life," said Brennan. "These Forever stamps are our way of saying Disney Villains will forever entertain us and serve as a tribute Disney's artistry and storytelling skill." Each stamp showcases one of 10 classic Disney Villains set against a blue background.

From left: the Queen (Snow White and the Seven Dwarfs), Honest John (Pinocchio), Lady Tremaine (Cinderella), the Queen of Hearts (Alice in Wonderland) and Captain Hook (Peter Pan),

From left: Maleficent (Sleeping Beauty), Cruella De Vil (One Hundred and One Dalmatians), Ursula (The Little Mermaid), Gaston (Beauty and the Beast) and Scar (The Lion King).

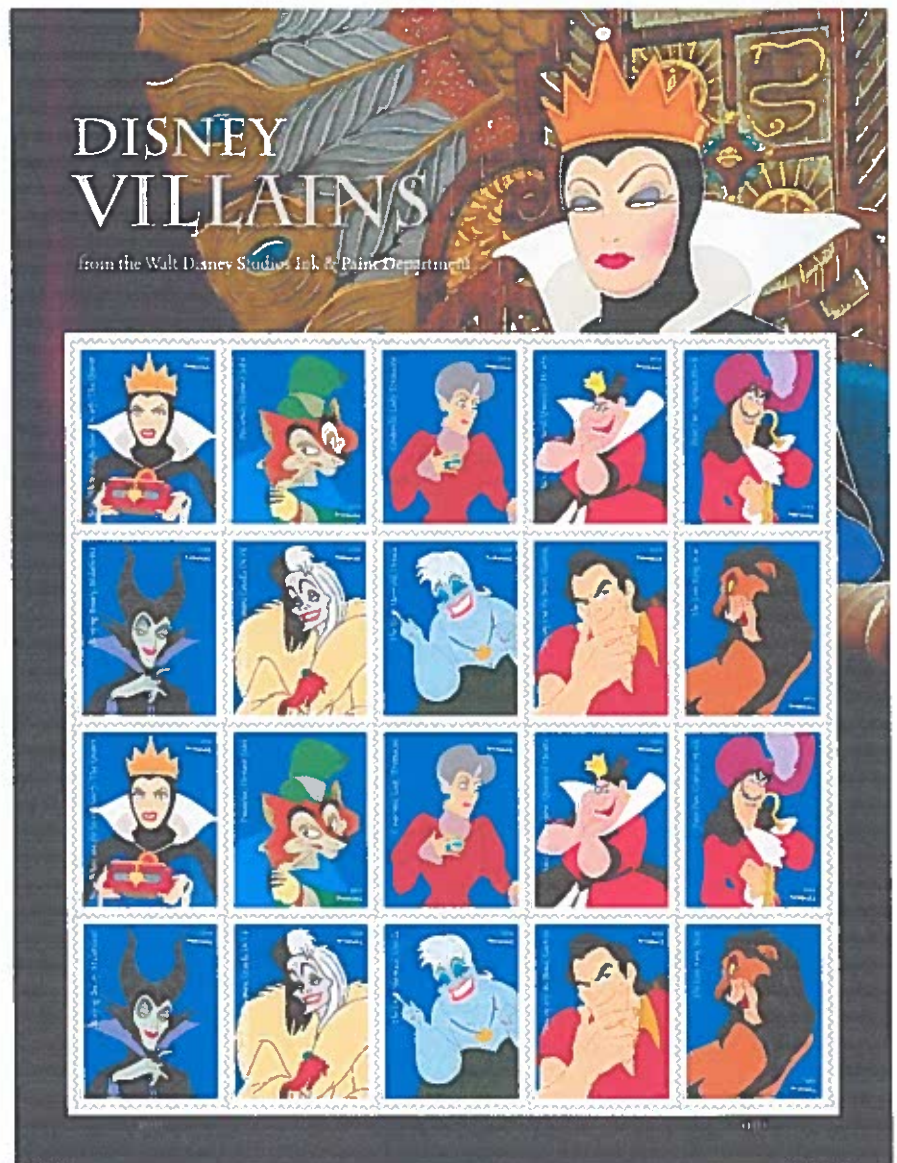
The Art of Animation

Beginning in 1923, as part of Walt Disney Animation Studios, Disney's Ink & Paint Department helped create classic animated films. Its artists brought life to countless memorable characters, including many iconic Disney Villains. One of the first groups of its kind, Disney's Ink & Paint Department was yet another stop on the road to creating an animated film.

The Disney Villains from the Walt Disney Studio's Ink & Paint Department stamps are being issued as Forever stamps that are always equal in value to the current First-Class Mail service 1-ounce price.

Flowers from the Garden

1st Class Forever Rate
August 16—Sioux Falls, SD



The *Flowers From the Garden* stamps will be available in the following formats: PSA Booklet of 20, PSA Coil of 3,000 and 10,000



Four different paintings of flowers that come from typical American gardens, each bunch artfully arranged in a container. One stamp features red camellias and yellow forsythia in a yellow pitcher, while another features white peonies and pink tree peonies in a clear vase. An arrangement of white hydrangeas, white and pink roses, green hypericum berries, and purple lisianthus in a white vase graces another stamp, while blue hydrangeas in a blue pot appear on another. Art director Derry Noyes designed the stamps with existing art by Elizabeth Brandon.

USPS 2017 New Issues

Sharks

One Ounce Forever Rate
July 26—Newport, KY



The U.S. Postal Service will celebrate the wonder of sharks by issuing the Sharks Forever stamps featuring five species that inhabit American waters — the mako, thresher, great white, hammerhead and whale sharks. The 8 a.m. July 26 First-Day-of-Issue ceremony will take place at the Newport Aquarium in Newport, KY.

Misunderstood Creatures

Possibly no other creatures are as mythologized — or as misunderstood — as sharks. Blockbuster thrillers and sensationalized media have fueled the belief that sharks are monsters: unthinking, bloodthirsty, vengeful and primitive. While they are ancient creatures, having emerged long before the first dinosaurs, after 400 million years the 500 or so known shark species have adapted to their ecological role.

Sharks' adaptations include light, flexible skeletons of cartilage, teeth replaced without limit and skin covered by a hydrodynamic surface of tiny tooth-like structures. Their keen senses include one that detects electrical signals given off by prey and enables navigation by Earth's magnetic field. Their nervous systems are also adapted to sense miniscule water movements, such as the struggles of a far-off fish.

Protect Pollinators

Ounce Forever Rate
August 3—Richmond, VA

The U.S. Postal Service® will issue the Protect Pollinators stamps (Forever® priced at 49 cents), in five designs, in a pressure-sensitive adhesive (PSA) pane of 20 stamps.

The U.S. Postal Service pays tribute to the beauty and importance of pollinators with stamps depicting two of our continent's most iconic: the monarch butterfly (*Danaus plexippus*) and the western honeybee (*Apis mellifera*), each shown industriously pollinating a variety of plants native to North America.

The stamps feature: n A monarch and a coneflower (photo by Karen Mayford); n A western honeybee and a golden ragwort (photo by George D. Lepp); n A monarch and a zinnia (photo by Bonnie Sue Rauch); n A western honeybee and a New England aster (photo by Michael Durham); and n A monarch and goldenrod (photo by Justin Fowler).

The remainder of the stamps in this pane recur in a scattered arrangement reminiscent of a field of wildflowers. The selva photograph features a monarch and a goldenrod — a different view of the same two species depicted on one of the stamps (photo by Justin Fowler). These particular species exemplify the ecological service provided by all pollinators, which include other insects, birds, and bats. Trending declines in their populations alert us that pollinators now need mindful human intervention in order to thrive. Individuals can help butterflies, bees, and other pollinators by planting pollinator gardens that include native flowers or heirloom varieties of fruits and vegetables. Art director Derry Noyes designed this stamp pane with existing photographs.



President's Corner

Greetings fellow Rockford Stamp Club members:

I think a few words of thanks are to start this message. First, a huge thanks to Tim Wait for completing the May newsletter, even though he was on the injury list with very limited mobility he graced us with yet another great newsletter. Due to not having a July meeting, Tim was afforded a break in not having to worry about a July newsletter and was able to concentrate on his recovery. That said, here we are perusing a wonderful August newsletter crafted by his hand. Tim, you're the man!

Huge thanks are also extended to Ted Gifford for his presentation on plate block collecting and the Durland Standard Plate Number catalog. Ted went above and beyond in providing all of us with color copies of the different plate blocks that he spoke about and explained in his presentation. It was great to see the participation of the members with questions, comments and discussion of this subject. Ted has offered to continue with additional presentations to expand on the subject, which I think is a great idea. Thanks again Ted for promoting great member participation in your presentation.

I invite anyone else that is interested in making a presentation on their interests in the stamp collecting arena to let any of the officers know and we will get you scheduled. I believe these short educational presentations are of great value to the club in expanding our knowledge base, promoting discussion, and exposing interests and areas of expertise.

Although we did have fewer auction lots than usual at the May meeting, we still finished in a timely manner with having Ted's presentation as well as show and tell presentations.

The May Tuesday morning auction had fewer lots as well but the bidding was spirited at both auctions. Thank you, bidders. It is summer and many of our members are "on the road" and that accounts for fewer lots and fewer members at the meeting and auction.

Unfortunately, I was not able to attend the June Tuesday morning auction so I am unable to comment on that.

I will not be at the August Wednesday night meeting due to the "special delivery" of our third grandchild scheduled for 2 P.M. Eastern time on that day in Lansing, MI. A signature is required and my son may have his hands full.

The meeting will be led by the very capable Vice-President Ward Miller. Thanks Ward. Have a great meeting and auction. I only ask that any impeachment vote be held over until I can be present.

United States Semi-Postal Stamps

The US was late to join the ranks of postal administrations issuing Semi-Postal stamps, starting in 1998. A semi-postal stamp, also known as a charity stamp, is a postage stamp issued to raise money for a particular purpose (such as a charitable cause) and sold at a premium over the postal value. Typically the stamp shows two denominations separated by a plus sign, but in many cases the only denomination shown is for the postage rate, and the postal customer simply pays the higher price when purchasing the stamps. The first semi-postal stamps were issued in the 1890's and many countries have used this method to raise funds ever since. Only the Breast Cancer Research and the Save Vanishing Species stamps are still on sale at the USPS. Scott #B1-B5 are shown below.



Breast Cancer
Research



Heroes of 2001



Stop Family
Violence



Save Vanishing
Species



Breast Cancer
Research (2014)



WEB SITE UPDATE - We are looking to get more information on the Website. Please log on and take a look. Contact Webmaster, Ted Gifford with any comments or bring it up at a meeting.

RECENT ACQUISITIONS (or Neat Stuff I Really Like) By Tim Wait



Registry Return Receipt USPOD Form 1548.

Filled out by sending PO, in this case Chester, Pa. and sent along with Registered Letter No. 8 to Rockford. Upon pickup/or delivery, the form was signed by the recipient and returned to the originating PO to confirm receipt and complete tracking of the letter or parcel.

As this was Official Post Office Business, no postage was required.

R. H. Shumway is the name of both a mail-order seed company, onetime the largest in the world, and its founder Roland H. Shumway, most popularly known as "The Pioneer Seedsman". Shumway was born July 26, 1842 at his family farm in Kishwaukee, Illinois. In 1870, he founded the R. H. Shumway seed company on his farm in Rockford, Illinois. By 1881 his company was expanding so the company relocated to South First street in order to accommodate larger facilities. By his death in 1925, it was the largest in the world, shipping 200,000 catalogues per year.

MEMBER AD	MEMBER AD	NEW MEMBER AD
For Sale: World Wide off paper 4oz special \$6.95. Contact DR Arnquist 815-226-9020.	Wanted: Old letters from Boone & Winnebago County, IL. Contact Tim Wait at 815-670-5869 or email t.wait@comcast.net.	Wanted: FDC-Doris Gold Cachet Unaddressed and signed by Doris Gold. Cash or trade. Contact Hank Fox at one of the meetings.

ROCKFORD 2017 STAMP SHOW DEALERS

Our 14 stamp dealers had a great crowd of customers on Saturday. We hope you were able to find something for your collection. Remember, the dealers are the backbone of our show and their support allows us to put on this event.

New for 2017

Fox River Stamps
Michael Mules
 Salem, WI
 414-234-9867

University Ave. Stamps
Dennis Lemke
 Middleton, WI
 608-831-1277

Vest Pocket Philatelist
Bill DiSalvatore
 Cherokee Village, AR
 870-287-2809

John's Stamp Den
John Steele
 Washington, IL
 309-444-8247

Alroy Stamps
Al Lenz
 Schaumburg, IL
 847-524-0147

Double J Stamps
Jeff
 Arlington Heights, IL
 847-843-8700

Rockford Coin & Stamp
Steve Jennings
 Rockford, IL
 815-282-4444

Phil Edwards
 Normal, IL
 309-452-2593

Steve Capone
 Rockford, IL
 815-394-0537

Applebox Philatelic's
Richard Duda
 Mt. Prospect, IL
 847-439-7614

DMS Collectibles
John Butler
 Normal, IL
 309-963-4248

W. H. Burdick
 Mtn. Home, AR
 870-425-7799

Terry Kurzinski
 Cherry Valley, IL
 815-262-9117

David Alex
 Glenview, IL
 847-291-7826

ROCKFORD STAMP CLUB

We invite all area collectors to join us at a future meeting of the Rockford Stamp Club. Meetings are held the first Wednesday at 6:00pm, every month except July, and the third Tuesday of every month at 9:00am, at the Ken-Rock Community Center, 3200 11th St., Rockford, Illinois. Each meeting begins with a buy/sell/trade session followed by a lively, unreserved stamp auction. Come discover the fun of stamp collecting. All ages welcome.

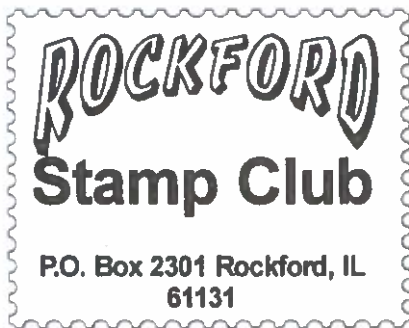
The 2017 Club Officers

President.....Frank Schmitt
815-226-4391
Vice-President.....Ward Miller
Secretary.....Tammy Copus
Treasurer.....Hank Fox
815-397-0573
Director.....Matt Mace
Director.....Terry Kurzinski
Director.....Steve Capone
Webmaster.....Ted Gifford
Show Chairman.....Tim Wait
815-670-5869

Perry Arnquist Award Recipients

1991 Perry Arnquist Emeritus	1999 Dwane Kaplenk*
1992 Evert Thelene *	2000 Thomas Johnston
1993 Donald Arnquist	2001 Mike Peters
1994 Otto Ehlers *	2002 Craig Edgington
1995 Dick Wibom *	2003 Earl Button
1996 Dan Hammell *	2004 Timothy Wait
1997 Robert Rosell *	2012 Tim Gallagher *
1998 Matt Mace	

* Closed album



June Meetings

Wednesday, Aug 2 and Tuesday Aug 15

Welcome back to the Wednesday night meetings. Tim for more Philatelic Phun!