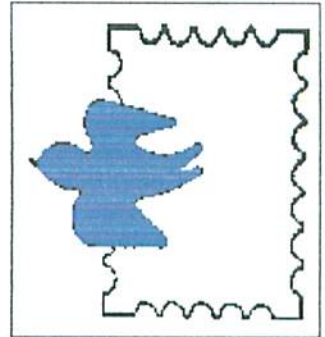


# ROCKFORD STAMP NOTES

## ROCKFORD STAMP CLUB

ESTABLISHED AUGUST 21, 1930 - APS CHAPTER #735

EDITOR: TIMOTHY G. WAIT



February 2016

Volume 20 - Number 2

Monthly meetings at Ken-Rock Community Center, 3200 11th St., Rockford, IL

### Wednesday, February 3, 2016

6:00 pm - Buy, sell and trade  
View auction lots  
7:00 pm - Meeting & auction

### Tuesday, February 16, 2016

9:30 am - Buy, Sell and trade  
View auction lots  
10:00 am - Meeting & auction

**1st Wednesday Update:** At the Wednesday January 6th business meeting we had 28 members in attendance. Tammy Copus discussed her Loves Park School Kids. She has 10-12 regulars. The other K-12 school did not work out. See next section below for a list of stamp topics the kids are collecting and getting ready to exhibit at the March show.

President Steve Capone officially appointed Tim Wait, Mike Peters and Mike Seefeldt to the Nominating Committee. The committee will be canvassing the membership to see who is willing and able to step up into a leadership position in the future.

Frank Schmitt brought a postcard from the Mendota Monument Co., F.J. Schmitt, Jr. Proprietor. A nice memento from their family business. Stanley Campbell brought a revenue document from 1802 that had a Pennsylvania embossed revenue. These are listed in Scott under RM. Check it out! No raffle. Wait for the show.

### **Loves Park Panther Stamp Club**

Tammy is getting the kids excited about preparing their exhibits for the Show. Here are some of the topics they are working on.

Greece	US Birds
Insects	Penguins
Space	Canadian Bears
Olympics	Horses
Butterflies	Walt Disney Movie Cars

These are broad categories but if you have any extra stamps for these subjects that you could donate it would be greatly appreciated. What a wonderful cause, exposing our youth to stamp collecting! Thank you Tammy! Please bring your donations to the February 6th meeting or February 19th gathering.

**3rd Tuesday Update:** The Tuesday January 19th gathering was cancelled due to Rockford Public Schools being closed. Calls were made to as many members as possible. If the weather is in question, watch WIFR or WREX and if Rockford Schools are closed Ken-Rock will be closed too. Sorry if we missed anyone and the few who did show up were entertained by Steve at McDonalds!

### **What Do You Collect?**

Looking for your input to *Rockford Stamp Notes*. Write down for me what you collect and how or what got you started. If you would like, I will work with you to edit your comments. Please help make our newsletter more enjoyable to all. See me at a Wednesday night meeting to discuss.



### **Upcoming Area Stamp Shows**

#### **Sat Feb 6 - Janesville Stamp Show**

Janesville, WI. Ramada Inn, 3900 Milton Ave. Hours 9:30-4. 20 Dealers. Free admission.

#### **Sat-Sun Mar 12-13 - Rockford Stamp Show**

Loves Park, IL. Forest Hills Lodge, 1601 West Lane Rd (Hwy 173). Hours Sat 10-5, Sun 10-4. 11 Dealers. Exhibits, cachet, free admission.

#### **Fri-Sun Mar 18-20 - ASDA Midwest Stamp Show**

Lombard, IL. Linder Conference Center, 610 E. Butterfield Rd. Hours Fri-Sat 10-5 Sun 10-3. Free admission.



# U.S. 2016 New Issues

## La Cueva del Indio

January 17—Washington, DC



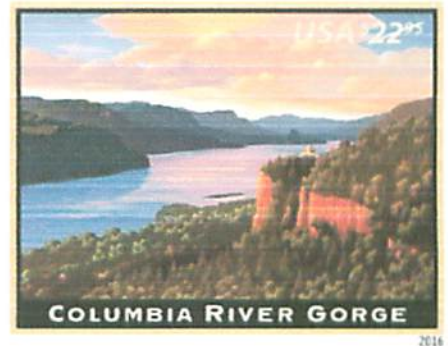
With this new Priority Mail® stamp, the U.S. Postal Service® celebrates one of Puerto Rico's many magical and mysterious caves, La Cueva del Indio.

The stamp art depicts a view of La Cueva del Indio, or the Cave of the Indian, which is located near Arecibo on Puerto Rico's north coast.

La Cueva del Indio gets its name from the great number of engravings, known as petroglyphs, found on the cave's walls. The engravings are believed to be the work of the Taino, the pre-Columbian inhabitants of the island. Archaeologists have studied the cave, providing evidence that it contains one of the largest concentrations of petroglyphs in Puerto Rico. This rich legacy from the area's indigenous cultures earned the cave its protected status as a Natural Reserve, managed by the Puerto Rico Department of Natural and Environmental Resources.

With this new Priority Mail Express stamp, available in panes of 10, the Postal Service celebrates the grandeur of the Columbia River Gorge. Approximately 80 miles long and up to 4,000 ft. deep, the gorge runs along the Columbia River to form part of the border between Oregon and Washington.

The stamp art captures the beauty of the Columbia River as it winds its way through the steep cliffs of the Cascade Mountain Range. The historic Vista House sitting atop Crown Point and overlooking the river 725 ft. below shimmers in the golden light of the setting sun. Illustrator Dan Cosgrove of Chicago worked under the direction of Phil Jordan of Falls Church, VA, to create the stamp image.



## Columbia River Gorge

January 17—Washington, DC

Taken as the full moon rises, the image captures the brilliant surface of earth's only natural satellite. A full moon occurs approximately every 29.5 days when the moon is opposite the sun, with the Earth between the two. Since the rotation and orbit periods of the moon are the same, the same part of the moon is always seen from Earth.

Issued at the \$1.20 price, this Global Forever stamp can be used to mail a one-ounce letter to any country to which First-Class Mail International service is available. Greg Breeding designed the stamp under the art direction of William Gicker.

## The Moon

February ?—Washington, DC



National Parks—this years show theme is the 100th anniversary of the National Park Service. In 1934 the USPOD issued a beautiful set of 10 stamps depicting US National Parks. This set was influenced by our stamp collecting President, Franklin Delano Roosevelt. Of course this was one of the sets caught up in "Farley's Follies" which was PMG Farley giving imperf sheets to his friends! This resulted in the stamps being made available to the public imperf too. A fun set to collect!



# The Rockford Stamp Club



American Philatelic Society Chapter # 735

**WEB SITE UPDATE** - We are looking to get more information on the Website. Please log on and take a look. Contact Webmaster, Ted Gifford with any comments or bring it up at the meetings.

## ROCKFORD 2016 - March 12-13

We have 24 nine page exhibit frames that we would like to fill with **exhibits from our members**. No frame fees and no rules! Anything philatelic in nine 8½ x 11 pages per frame. Applications will be available at the February meetings.

Start getting **auction** lots ready for the two day **silent auction**. This is a great time to try to sell more expensive material. There are a lot more bidders than at our monthly meetings. Limit 10 auction lots per day per person or dealer.

See the **2016 Dealer list** below for confirmed dealers for 2016. Let them know what you are looking for before the show so they can make sure to bring material you are interested in.

Don't miss out on the **Special Awards Banquet Saturday night** at Stockholm Inn. Always an enjoyable evening!

As always, we will need help with set up Saturday morning from 8:00 to 10:00, and take down at 4:00 pm Sunday.

### Canadian Registration Stamps 1875-1888

The Registered Letter Stamps of Canada were issued in 1875 to make it easier to notice registered mail. Three stamps 2¢-Registration within the Dominion of Canada, 5¢-Registration to the US and 8¢-Registration to the United Kingdom were issued. These stamps were used until 1893. A beautiful and comprehensive exhibit of these fascinating three stamps can be found at [www.novastamps.com/RLSexhibit.pdf](http://www.novastamps.com/RLSexhibit.pdf). Check it out!



Mint examples of the 2¢ & 5¢ stamps, an 8¢ stamp "cancelled" with the old Registered marking used before the stamps were issued.

MEMBER AD	MEMBER AD	NEW MEMBER AD
<p><b>For Sale:</b> World Wide off paper 4oz special \$6.95. Contact DR Arnquist 815-226-9020.</p>	<p><b>Wanted:</b> Old letters from Boone &amp; Winnebago County, IL. Contact Tim Wait at 815-670-5869 or email <a href="mailto:t.wait@comcast.net">t.wait@comcast.net</a>.</p>	<p><b>Wanted:</b> FDC-Doris Gold Cachet Unaddressed and signed by Doris Gold. Cash or trade. Contact Hank Fox at one of the meetings.</p>

## ROCKFORD 2016 STAMP SHOW DEALERS

Confirmed Rockford 2016 dealers are listed below. Due to a scheduling conflict with the Garfield-Perry March Party in Cleveland, some of our dealers will not be at our show in 2016. Let them know if you are looking for something special.

**New for 2016**

**David Alex**  
Glenview, IL  
847-291-7826

**Applebox Philatelic's**  
**Richard Duda**  
Mt. Prospect, IL  
847-439-7614

**John's Stamp Den**  
**John Steele**  
Washington, IL  
309-444-8247

**Steve Capone**  
Rockford, IL  
815-394-0537

**Alroy Stamps**  
**Al Lenz**  
Schaumburg, IL  
847-524-0147

**Rockford Coin & Stamp**  
**Steve Jennings**  
Rockford, IL  
815-282-4444

**Pfohl's Stamps**  
**John "Kermit" Kirpes**  
Dubuque, IA  
563-582-6247

**Phil Edwards**  
Normal, IL  
309-452-2593

**W. H. Burdick**  
Mtn. Home, AR  
870-425-7799

**Terry Kurzinski**  
Cherry Valley, IL  
815-262-9117

**DMS Collectibles**  
**John Butler**  
Normal, IL  
309-963-4248

# ROCKFORD STAMP CLUB

We invite all area collectors to join us at a future meeting of the Rockford Stamp Club. Meetings are held the first Wednesday at 6:00pm, every month except July, and the third Tuesday of every month at 9:30am, at the Ken-Rock Community Center, 3200 11th St., Rockford, Illinois. Each meeting begins with a buy/sell/trade session followed by a lively, unreserved stamp auction. Come discover the fun of stamp collecting. All ages welcome.

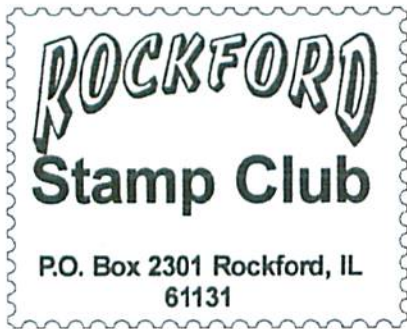
## The 2016 Club Officers

President.....Steve Capone  
779-771-9527  
Vice-President.....Frank Schmitt  
Secretary.....Tammy Copus  
Treasurer.....Hank Fox  
815-397-0573  
Director.....Matt Mace  
Director.....Tim Copus  
Director.....Terry Kurzinski  
Webmaster.....Ted Gifford  
Show Chairman.....Tim Wait  
815-670-5869

## Perry Arnquist Award Recipients

1991 Perry Arnquist Emeritus	1999 Dwane Kaplenk*
1992 Evert Thelene *	2000 Thomas Johnston
1993 Donald Arnquist	2001 Mike Peters
1994 Otto Ehlers *	2002 Craig Edgington
1995 Dick Wibom	2003 Earl Button
1996 Dan Hammell *	2004 Timothy Wait
1997 Robert Rosell *	2012 Tim Gallagher *
1998 Matt Mace	

\* Closed album



**FEBRUARY Meetings**

**Wednesday, Feb 3 and Tuesday Feb 16**

**Dues are Due!**