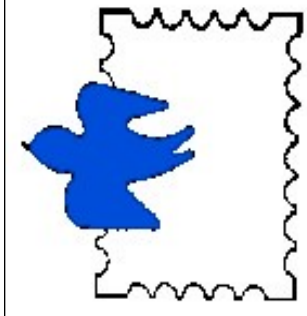


ROCKFORD STAMP NOTES

ROCKFORD STAMP CLUB

ESTABLISHED AUGUST 21, 1930 - APS CHAPTER #735
EDITOR: TIMOTHY G. WAIT EMAIL: T.WAIT@COMCAST.NET



January 2020

Volume 24 - Number 1

Monthly meetings/auction at Ken-Rock Community Center, 3200 11th St., Rockford, IL

Wednesday, January 8, 2020

6:00 pm - Buy, sell and trade
View auction lots
7:00 pm - Meeting & auction

Tuesday, January 21, 2020

9:30 am - Buy, Sell and trade
View auction lots
10:00 am - Auction

Wednesday, December 4th: 22 members came for the annual Holiday Party and donation auction. Thanks to your donations of auction lots and spirited bidding we raised \$210 which was donated to the Ken-Rock Kids for their Holiday party! Thank you all for this and the great treats enjoyed by all!

Voting took place on December 4th. The 2019 Officers were all elected for a two year term. Directors are Tim Copus 2 years, Ted Gifford 4 years and Steve Capone 6 years. Congratulations and a big Thank You to all who have agreed to serve!

2020 Show topic - 75th anniversary of the Battle of Iwo Jima with a tie-in with the Marines. Cancel and cachet to be produced.

Hank Fox reported that the North Suburban Library in Loves Park has a complete set of 2020 Scott catalogues.

The building we currently meet in has been sold. Ken-Rock is moving to a new location. January meetings will continue at the present location. Stay tuned for further developments.

Show & Tell.....

1. **Christine Gustafson** - Feb 22, 1999 Hospice Care stamp first day ceremony in Rockford with special meaning as she was a hospice nurse.
2. **Hank Fox** - Breast Cancer semi-postal. Different year dates rating two collectibles.
3. **Stanley Campbell** - a) Zeppelin PC Hamburg from an American Company. b) Swiss postcard making fun of William Tell's son.
4. **Jeff Hall** - 1968 Christmas FDC Combo with all prior Christmas stamp issues.

Thank you all for participating.

Gerald Zimmerman won the Mystery Raffle!

Tuesday, December 17th: 15 members and one guest attended for the 120 lot auction and some Christmas treats! Come see what you can sell or find a goodie at the Tuesday auction and enjoy the company of your fellow philatelists!

Some New Mailing Rates	Now	Jan 26, 2020
Letter (1 oz.)	55 cents	55 cents
Letter add'l oz.	15 cents	15 cents
Flats (1 oz.)	\$1	\$1
Int'l Letter (1 oz.)	\$1.15	\$1.20
Domestic Pot Card	35 cents	35 cents
Priority Mail Envelope	\$7.35	\$7.75
Priority Mail Express Env.	\$25.50	\$26.35



Upcoming Area Stamp Shows

Sat-Sun Jan 18-19 MSDA Winer Show - Milwaukee
Milwaukee, WI. Crowne Plaza Milwaukee Airport, 6401 S. 13th St. Hours: Sat 10-5, Sun 10-3. 15 dealers, free admission.

Sat-Sun Jan 25-26 MSDA Winter Show - Chicago
Wheeling, IL. Ramada Plaza North Shore, 1090 S. Milwaukee Ave. Hours: Sat 10-5, Sun 10-3. 20 dealers, free admission.

Sat Feb 8 Janesville Stamp Show
Janesville, WI. Holiday In Express, 3100 Wellington Place. Hours: 9:30-4. Exhibits, 10 dealers, free admission.

Join the fun, free rides to stamp shows available!

Lunar New Year: Year of the Rat

1st Class Forever Rate
 Pane of 20
 Jan 11—Monterey Park, CA



The first USPS Lunar New Year stamp was issued in December 1992. In 2020, the Postal Service is launching its third Lunar New Year series. The Year of the Rat observance begins January 25, 2020, and ends February 11, 2021. Calling to mind the elaborately decorated masks used in the dragon dance often performed in Lunar New Year parades, this three-dimensional mask is a contemporary take on the long tradition of paper-cut folk art crafts created during this time of year. Art director Antonio Alcalá designed the stamp with original artwork by Camille Chew.

Big Bend Texas

\$7.75 Priority Mail Envelope
 Pane of 4
 Jan 18—Kansas City, MO



The Big Bend stamp captures the beauty of the Big Bend region in West Texas, where river, mountain and desert ecosystems coexist in its vast expanses. The stamp art depicts the Rio Grande flowing between the sheer limestone cliffs of Santa Elena Canyon in Big Bend National Park. Per Wikipedia, “Because the Rio Grande serves as an international boundary, the park faces unusual constraints while administering and enforcing park rules, regulations, and policies. In accordance with the Treaty of Guadalupe Hidalgo, the park’s territory extends only to the center of the deepest river channel as the river flowed in 1848. The rest of the land south of that channel, and the river, lies within Mexican territory. The park is bordered by the protected areas of Parque Nacional Cañon de Santa Elena and Maderas del Carmen in Mexico.”

Big Bend Texas

\$7.75 Priority Mail Envelope
 Pane of 4
 Jan 18—Kansas City, MO



This Express Mail stamp depicts the winter beauty of the Grand Island Ice Caves in Lake Superior, on Michigan’s Upper Peninsula. Grand Island is marked by massive sandstone bluffs that are especially dramatic in winter when lake water seeps into the crevices and caverns, forming magnificent ice curtains and icicles that hang like stalactites from ceilings. The stamp art features a colorful illustration of how one of these ever-changing ice caves might appear from the inside looking out toward the west at sunset.

Viewing ice caves and ice formations has become a popular winter activity at Pictured Rocks National Lakeshore and the surrounding area. The ice generally begins to form by mid-December and remains until early April, forming columns of blue, white, or yellow ice 20-50 feet high.

Made of Hearts Love

1st Class Forever Rate
 Pane of 20
 Jan 23—Memphis, TN



The first USPS Love stamp was issued in 1973. “Made of Hearts” 2020 stamp features horizontal lines of red and pink hearts on a white background. Toward the center, red hearts in varying sizes replace pink hearts in a formation that creates one large red heart, the focal point of this graphic design. Beyond romantic messages, the stamp is intended for use on thank-you notes, get-well cards or any occasion when love is the perfect message. Art director Antonio Alcalá designed the stamp.



The first Love stamp issued January 26, 1973, in the city of brotherly love, Philadelphia!

Continued on page five.

President's Corner - Frank Schmitt

Greetings fellow Rockford Stamp Club members:

What an eye opener when I saved this document on my computer and had to type January 2020!

2019 has slipped into history in our stamp collecting world (as well as life) and now we are faced with opening our albums to 2020 and hopefully enjoy a productive and fun new chapter in our stamp collecting world. While I hate to bring up that nasty term, "New Year's Resolution", it is that time of year. However:

- ◆ I will sort and organize all of my stamps that have not found their permanent home in an album or stock book.
- ◆ I will work on and assemble the exhibit that I have been putting off for the past 10 years.
- ◆ I will bring a show and tell to each of the Wednesday night club meetings.
- ◆ I will do a presentation on my area of interest in stamp collecting at a club meeting.
- ◆ I will promote the hobby of stamp collecting and bring a prospective new collector/member to a club meeting.
- ◆ I will volunteer to help where I can at the stamp club meetings, auctions, and Rockford 2-3-4 Stamp Expo.

I am sure every one of us has something we can add to this list of resolutions. Good luck on your success in accomplishing your goals.

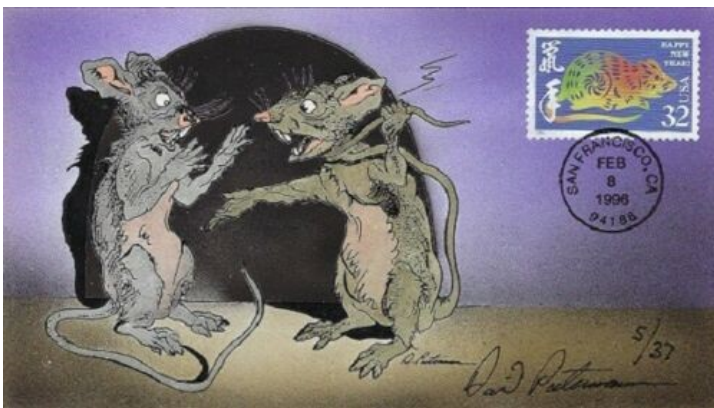
I want to thank everyone for their generosity at our annual December charity auction to benefit the Ken-Rock Kids. Our treasurer, Hank Fox, was able to present a check in the amount of \$210 dollars making this a very special Christmas for them. The members of this club really demonstrated the spirit of Christmas through generous donations of auction lots and generous bidding. Be proud!

I was able to sneak in a quick trip to the MSDA Holiday Stamp Show on December 14th. This show was a real sleeper, literally! I will not name names, but I observed more than one dealer snoozing at their table. You snooze, you lose. Sadly, attendance was low, but this show was close on the heels of Chicagopex and that was probably part of the reason. Of course, yours truly found something to buy. It is Christmas, and I am still working on sparking interest in stamp collecting with the grandchildren through some interesting topicals. Don't know if it will work but I have to try!

Here it comes! **Your** Rockford 2-3-4 Stamp Expo is fast approaching, and the success of **your** Expo depends on **you!** Volunteer when and where you can and feel free to sign up for multiple shifts. It is important that we all promote and support the Expo this year due to the date change, competing stamp shows (which is causing the loss of a few of our dealers). It is important to support the dealers so allow yourself enough time to shop, shop, shop. I will do my best to have silent auction packets available at all meetings prior to the Expo.

Wishing all a happy and prosperous New Year in all aspects of life.

USPS Lunar New Year Series—Year of the Rat



David Peterman - Hand Painted 5/37



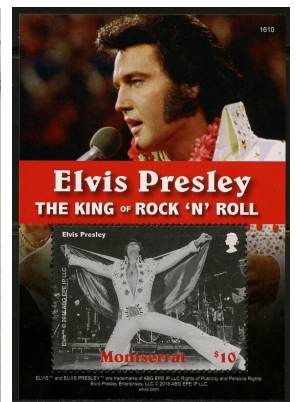
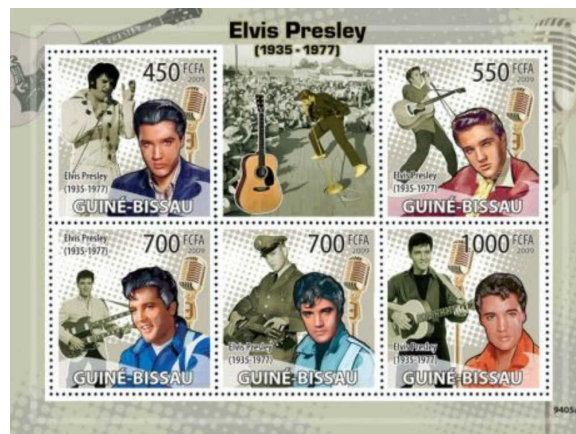
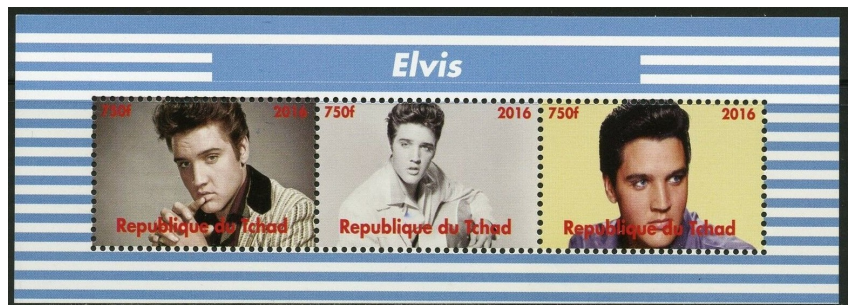
Fred Collins - Hand Painted 2008

The Lunar New Year is a twelve year cycle. The first year, Year of the Rat, was first commemorated on a US stamp in 1996 and again in 2008. 2020 begins the third cycle of the stamp. See page two for details of the new stamp.

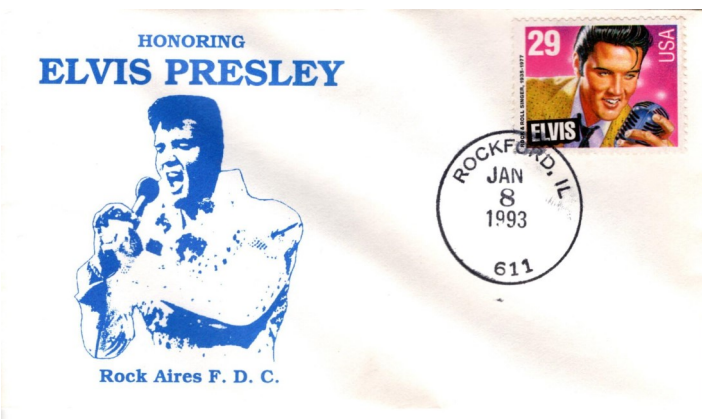
The Chinese Zodiac has twelve animals, Rat; Ox, Tiger, Rabbit, Dragon, Snake, Horse, Goat, Monkey, Rooster, Dog and Pig. Chinese zodiac animals have lucky meanings. Chinese people associate each animal with certain characteristics. It's believed that people born in a given year have the personality of that year's animal. People born in a certain year are believed to have attributes of that animal, which could either help or hinder a relationship. What's your sign?

Elvis!

Elvis Aaron Presley (January 8, 1935 – August 16, 1977), also known mononymously (A **mononymous person** is an individual who is known and addressed by a single name. In some cases, that name has been selected by the individual, who may have originally been given a polynym ("multiple name"). In other cases, it has been determined by the custom of the country or by some interested segment.) as Elvis, was an American singer and actor. Regarded as one of the most significant cultural icons of the 20th century, he is often referred to as **the "King of Rock and Roll" or simply "the King"**. Elvis has been commemorated on two US stamps and many, many stamps from countries around the world, quite often in multiple stamp issues or multi-stamp souvenir sheets. Many countries that do not have a very active postal system issue Elvis stamps to raise money through Elvis collectors. Here are just a few to celebrate his birthday.



Rockford Cover of the Month

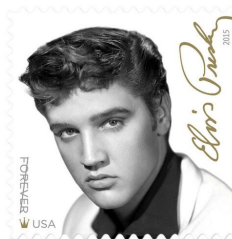


Elvis Presley

Still the best selling commemorative of all time, on January 8, 1993, which would have been Elvis' 58th birthday, the USPS issued a stamp in the Music Icons series.

Inscribed ELVIS - Rock & Roll Singer, 1935-1977

A contest was held to determine if the design should be a "young" or "old" Elvis. Issued nation wide. Cachet by Rock Aires, Duane Kaplenk, former member of the RSC.



A search on eBay under Stamps/ Topical stamps retrieves 2, 952 listings! Literally hundreds of stamps from dozens of countries!

Dues R Due!

2020 Dues are due. \$10 for a mailed newsletter and \$6 for an email version. Please pay Treasurer Hank Fox promptly!

Loves Park Panthers Stamp Club

Tammy Copus is again leading the club of 10 kids this year. They are working on their exhibits for the March show and are seeking the following material. **Please bring donations to a meeting ASAP!**

Transportation — Lizards

Australia, Canada, Greece

Great Britain, Poland

Welcome to the Rockford Illinois Stamp Club Website

www.rockfordstampclub.com

WEB SITE UPDATE - The NEW website was unveiled January 2019! We have started adding content including past issues of *Rockford Stamp Notes* and pictures. **Please let us know your comments. Tim & Frank - webmasters.**



Gwen Ifill Black Heritage

1st Class Forever Rate
Pane of 20
Jan 30—Washington, DC

The 43rd stamp in the Black Heritage series that began in 1978 honors Gwen Ifill (1955–2016), one of America's most esteemed journalists. Among the first African Americans to hold prominent positions in both broadcast and print journalism, Ifill was a trailblazer in the profession. In 1999, she became the first woman of African descent to host a nationally televised U.S. public affairs program with *Washington Week in Review*. The stamp features a photo of Ifill taken in 2008 by photographer Robert Severi. Art director Derry Noyes designed the stamp.



Scott RW26 - Issued July 1, 1959
1,628,365 sold raising \$4,885,095

Artists were asked to depict a "retriever in action" by the Wildlife Management Institute to encourage hunters to use retrievers to reduce crippling losses.

My Favorite Stamp

Submitted by Jeff Rieken

I fondly remember when this stamp came out and enjoyed hunting with my father. That's why it is my favorite stamp!

This Spot Needs A Stamp

EVERY one of you can come up with a special or favorite stamp that you can share a little story about. We have had a few in the past and I would like to build on this tradition. **Let me know what your stamp is!**

ROCKFORD 2-3-4 Stamp Expo 2019 Dealers

Thank you to our 2019 dealers! All our dealers were busy selling and buying stamps, covers and other philatelic items. The dealers were also major contributors, both selling and buying in our silent auction. Dealers are the backbone of philately, working hard to make sure we can fully enjoy our hobby! Please support them throughout the year.

Rockford Coin & Stamp

Steve Jennings
Rockford, IL
815-282-4444

Double J Stamps Jeff

Arlington Heights, IL
847-843-8700

Terry Kurzinski
Cherry Valley, IL
815-262-9117

Dennis Lemke
Great Lakes, IL
608-358-2133

Applebox Philatelic's

Richard Duda
Mt. Prospect, IL
847-439-7614

Fox River Stamps Michael Mules

Salem, WI
414-234-9867

David Alex (Sat. Only)

Glenview, IL
847-291-7826

Vest Pocket Philatelist

Bill DiSalvatore
Cherokee Village, AR
870-257-2809

Buy the Stamp

Rick Hyams
Arlington Heights, IL
847-414-5408

Steve Capone
Rockford, IL
815-394-0537

W. H. Burdick
Mtn. Home, AR
870-425-7799

Riverbank Treasurers

Jerry Wessler
New Lisbon, WI
608-515-6150

Wayne Youngblood WYstamps.com

Prairie Du Sac, WI
608-370-9098

Win Schaeffer

Flossmoor, IL
708-715-4321

ROCKFORD STAMP CLUB

We invite all area collectors to join us at a future meeting of the Rockford Stamp Club. Meeting and an auction are held the first Wednesday beginning at 6:00pm, every month except July. An auction takes place the third Tuesday of every month beginning at 9:00am. Both are held at the Ken-Rock Community Center, 3200 11th St., Rockford, Illinois. We start with a buy/sell/trade session followed by a lively, unreserved stamp auction. Come discover the fun of stamp collecting. All ages and collecting levels from beginner to advanced are welcome.

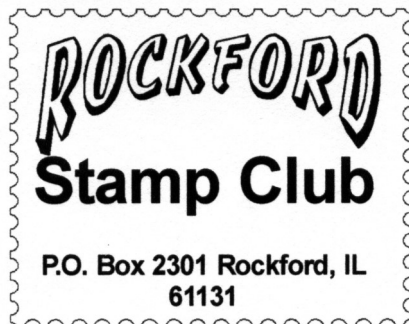
The 2020-2021 Club Officers

President.....Frank Schmitt
815-226-4391
Vice-President.....Ward Miller
Secretary.....Tammy Copus
Treasurer.....Hank Fox
815-397-0573
Director.....Tim Copus
Director.....Ted Gifford
Director.....Steve Capone
Show Chairman.....Tim Wait
815-670-5869 / t.wait@comcast.net

Perry Arnquist Award Recipients

1991 Perry Arnquist Emeritus	1999 Dwane Kaplenk*
1992 Evert Thelene *	2000 Thomas Johnston
1993 Donald Arnquist	2001 Mike Peters
1994 Otto Ehlers *	2002 Craig Edgington
1995 Dick Wibom *	2003 Earl Button
1996 Dan Hammell *	2004 Timothy Wait
1997 Robert Rosell *	2012 Tim Gallagher *
1998 Matt Mace	

* Closed album



January Meetings

Wednesday Jan 8 - Tuesday Jan 21

Happy New Year!