

Database statistics

Submit data

Search person

Help

Preferences

Gerstdale's Chin Chin

female - Sable Burmese (n)
CFA 28-FR-196-B - USA

Inbreeding coefficient: 37.5% (10 gen)
Breeder: Billie Gerst (Gerstdale)
Owner: Billie Gerst (Gerstdale)

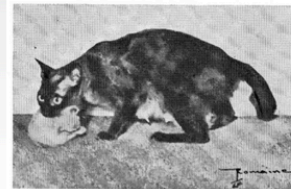
- ? Calculate IC
- ? Search ancestor
- ? Common ancestors with
- All ancestors
- ? Test mating
- 1 offspring
- 4 sire siblings
- 1 dam siblings
- 1 full siblings
- Reverse pedigree

Ch Gerstdale's Run Tai Mau

Sable Burmese (n)
CFA 20-FR-598
USA
1934-10-01
IC: 25% (8 gen)

Yen Yen Mau
Brown hybrid Burmese ()
CFA 15 FR 971 V17 - USA
IC: 0% (8 gen)

Wong Mau
Brown hybrid Burmese ()
CFA 15 FR 969 V17 - Burma
IC: 0% (10 gen)



Wong Mau and Kitten

Tai Mau

Seal point Siamese (n) - CFA 15 FR 317V17 - USA

Wong Mau

Brown hybrid Burmese () - CFA 15 FR 969 V17 - Burma



Wong Mau and Kitten

Unknown Male

() --

Unknown Female

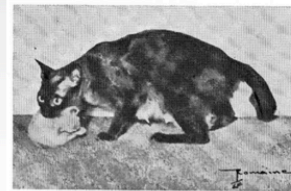
() --

Gerstdale's Mei Mei

Sable Burmese (n)
CFA 30-FR-342-B
USA
1935-02-18
IC: 25% (8 gen)

Yen Yen Mau
Brown hybrid Burmese ()
CFA 15 FR 971 V17 - USA
IC: 0% (8 gen)

Wong Mau
Brown hybrid Burmese ()
CFA 15 FR 969 V17 - Burma
IC: 0% (10 gen)



Wong Mau and Kitten

Tai Mau

Seal point Siamese (n) - CFA 15 FR 317V17 - USA

Wong Mau

Brown hybrid Burmese () - CFA 15 FR 969 V17 - Burma



Wong Mau and Kitten

Unknown Male

() --

Unknown Female

() --

Generations in pedigree: 3

< > All breeds Name starts with ends with includes Gerstdale's Chin Chin Search Extended search

1 Available animals 54 Available for matings Participating breeders List dead ends Printable Download HTML No buttons